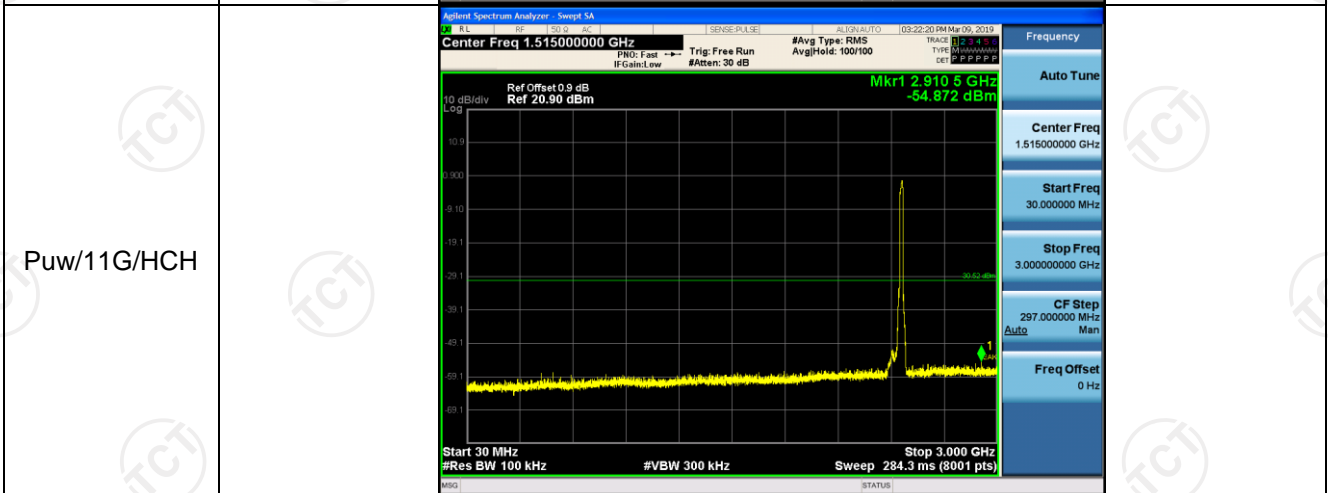
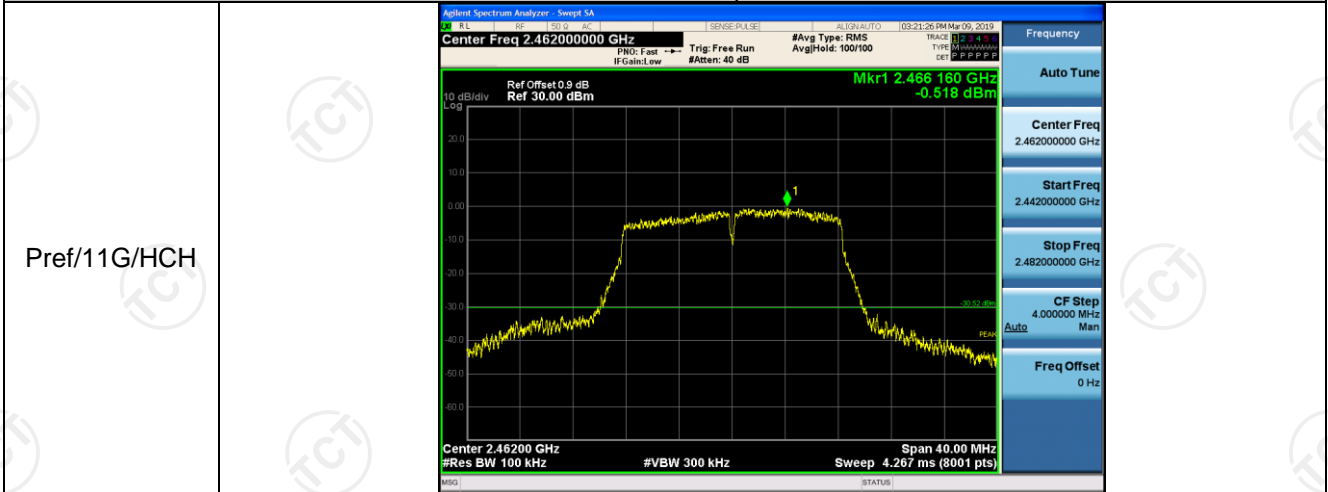
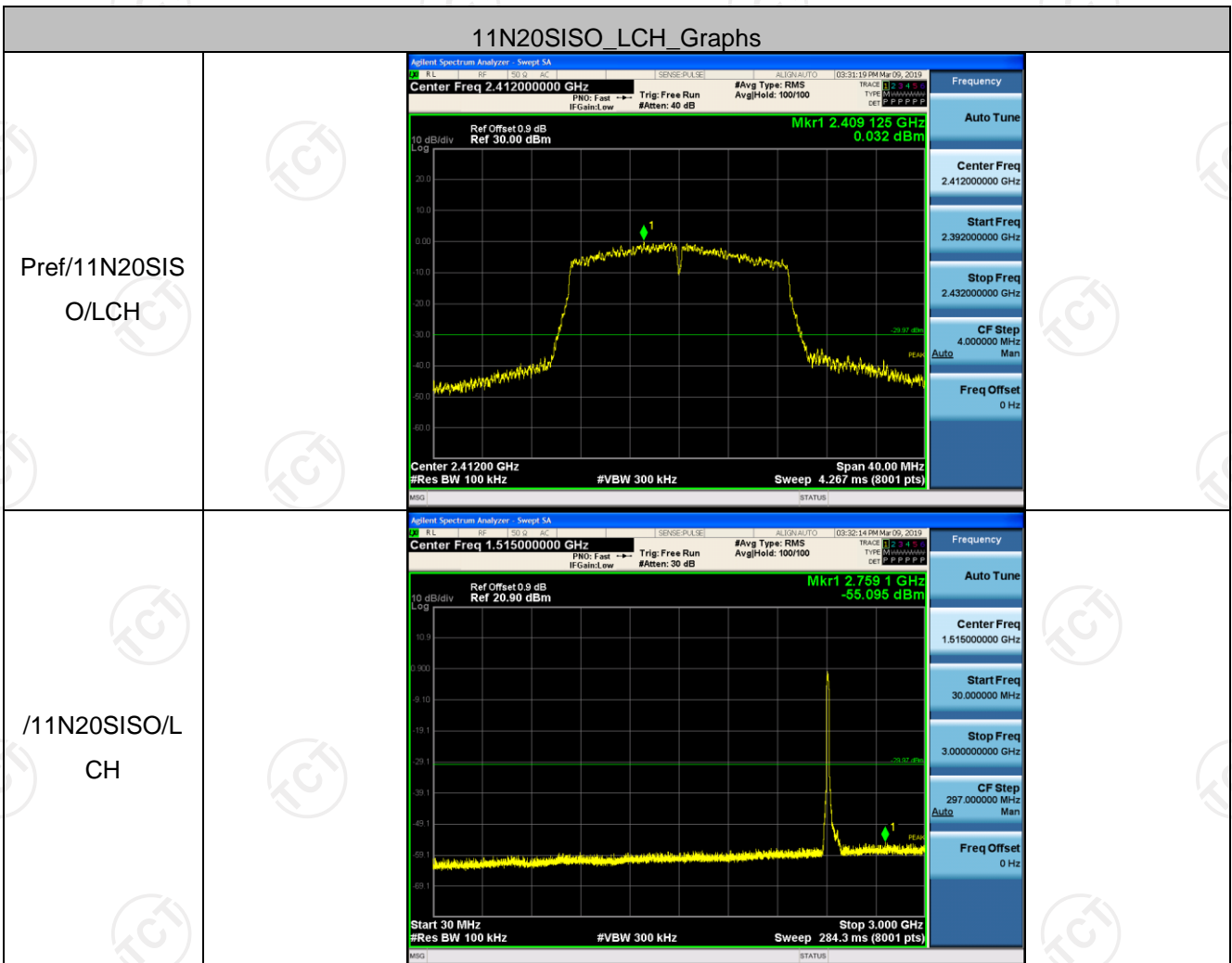
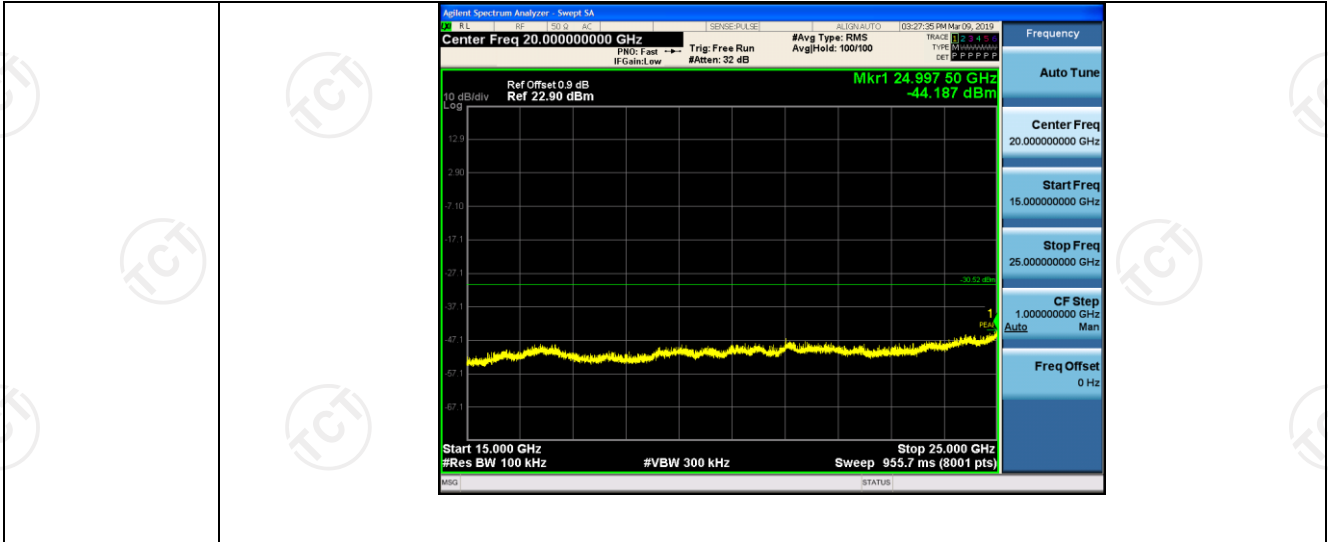


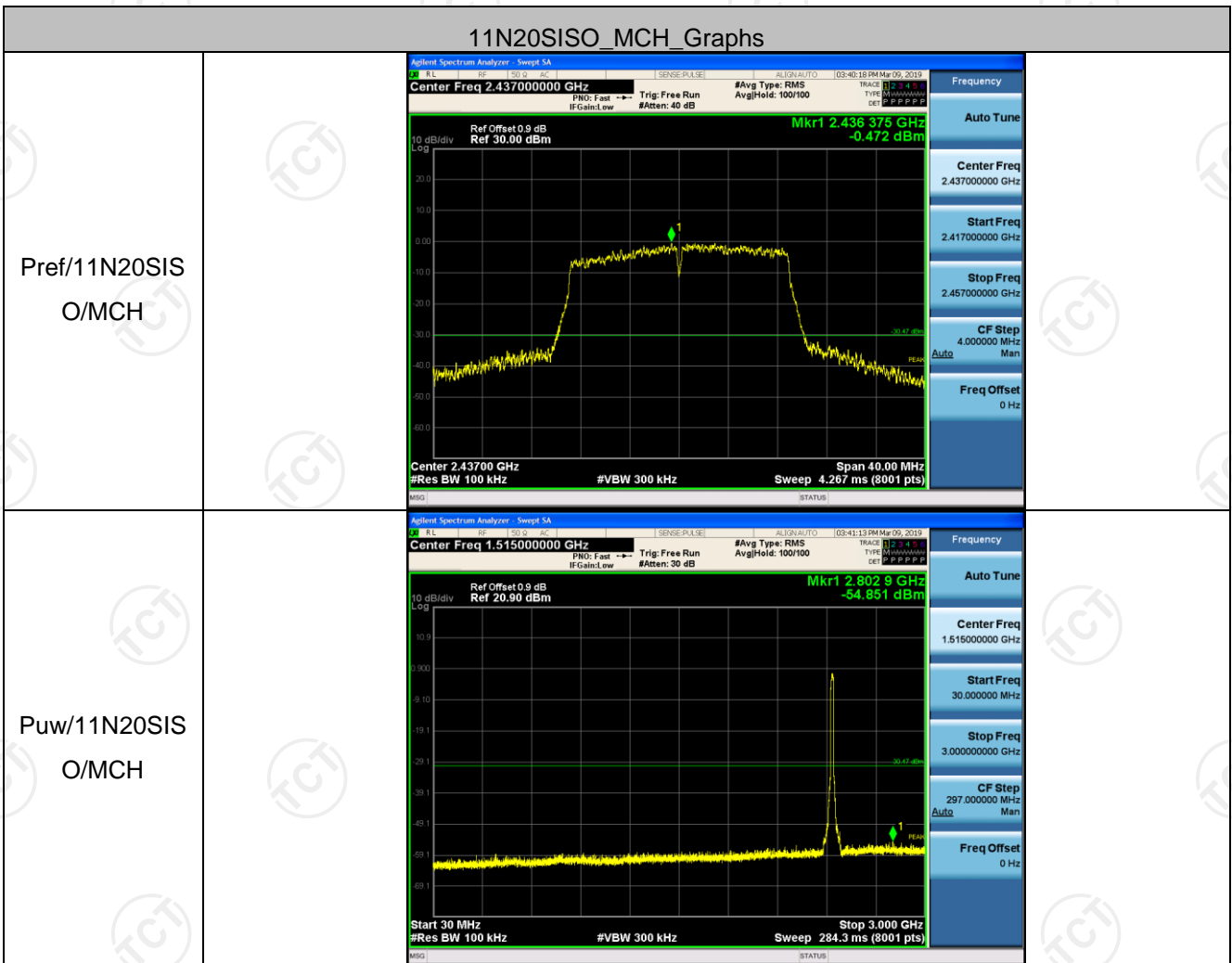
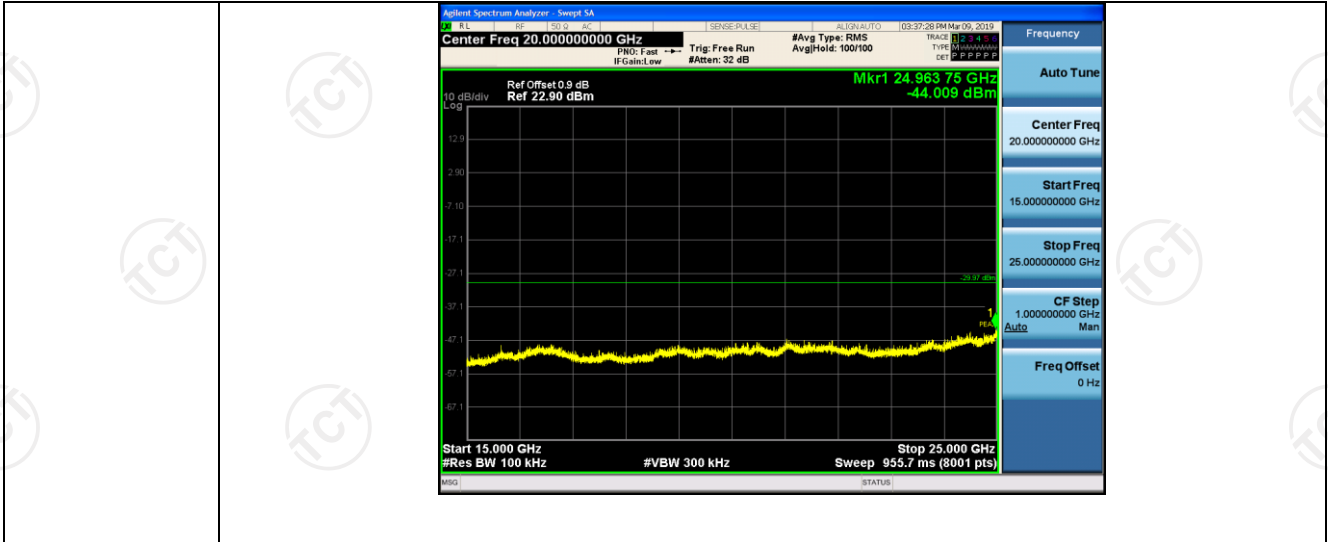
11G_HCH_Graphs

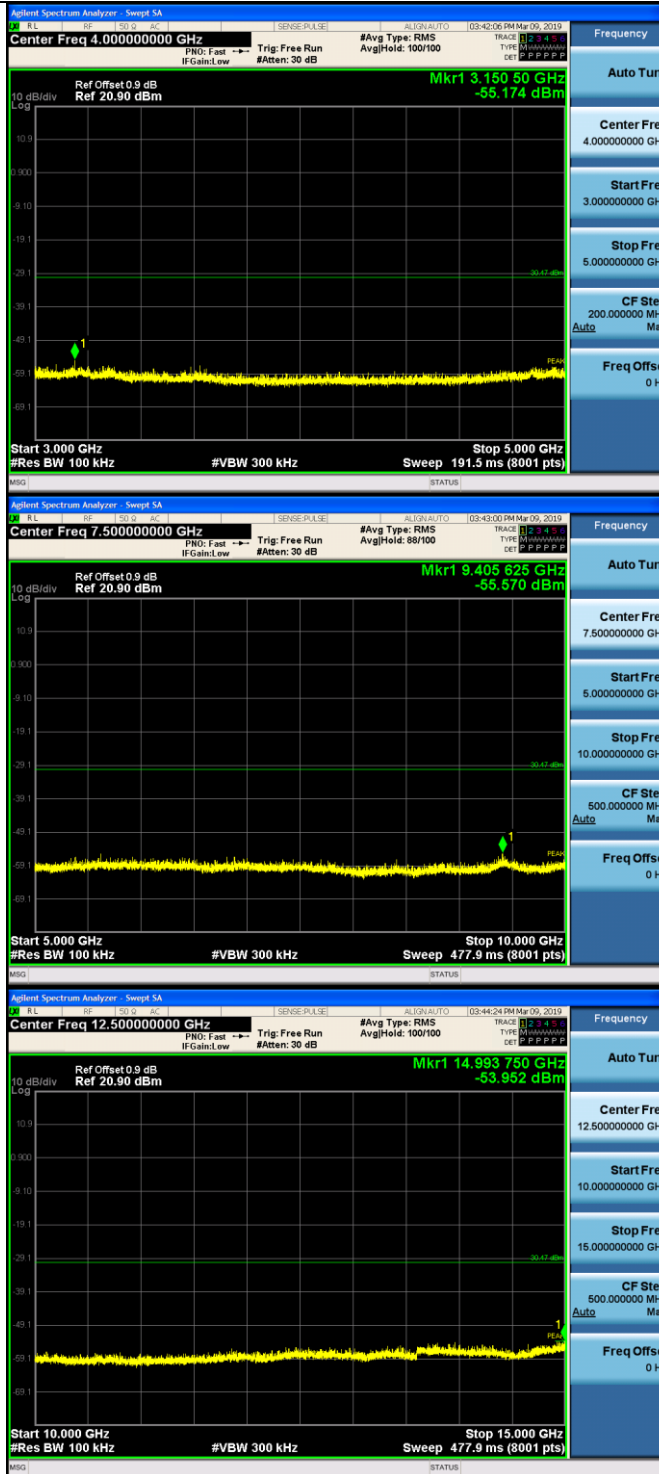


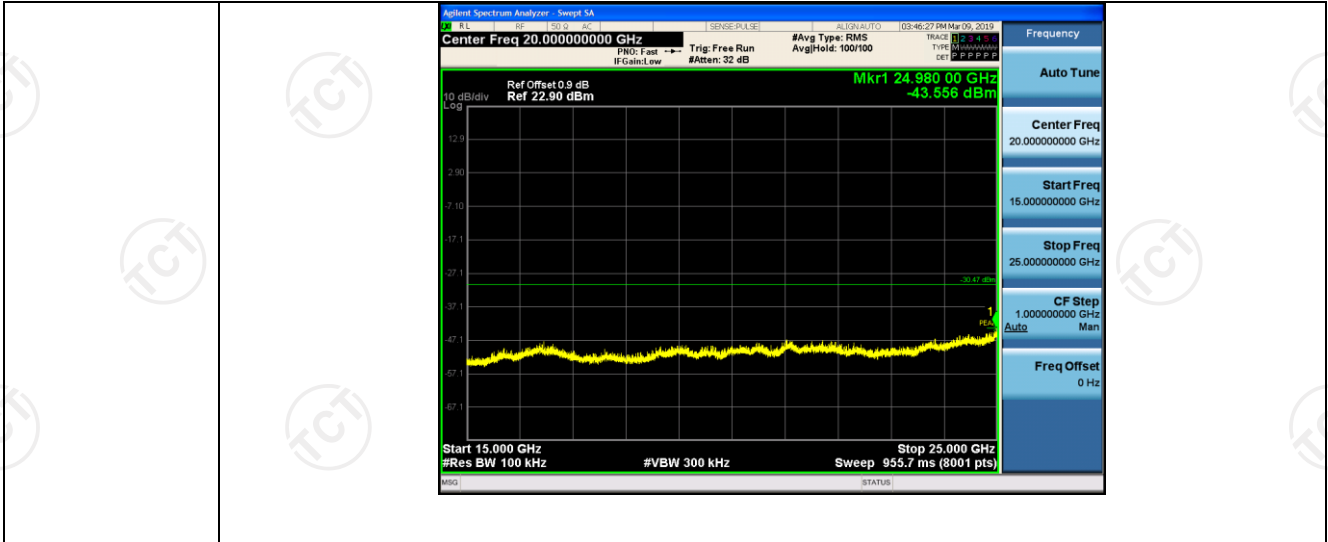




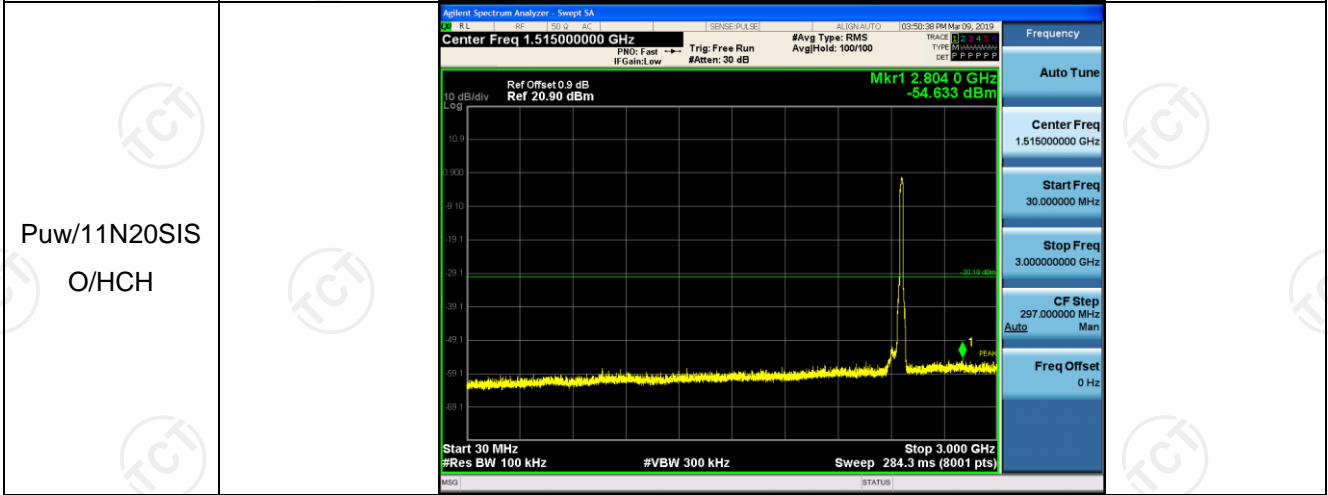
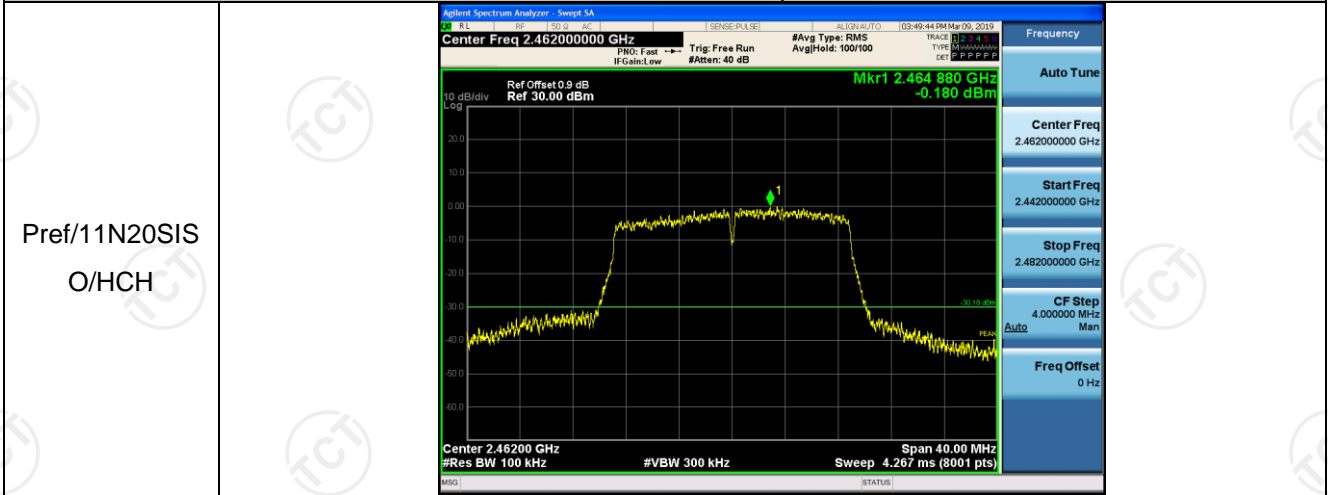




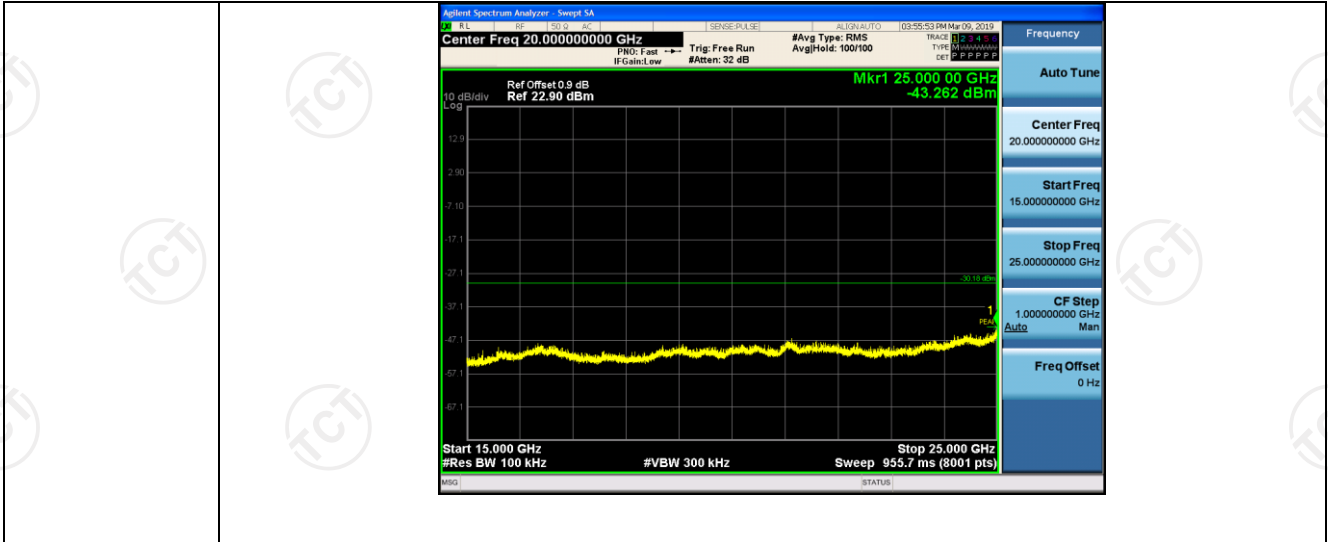




11N20SISO_HCH_Graphs





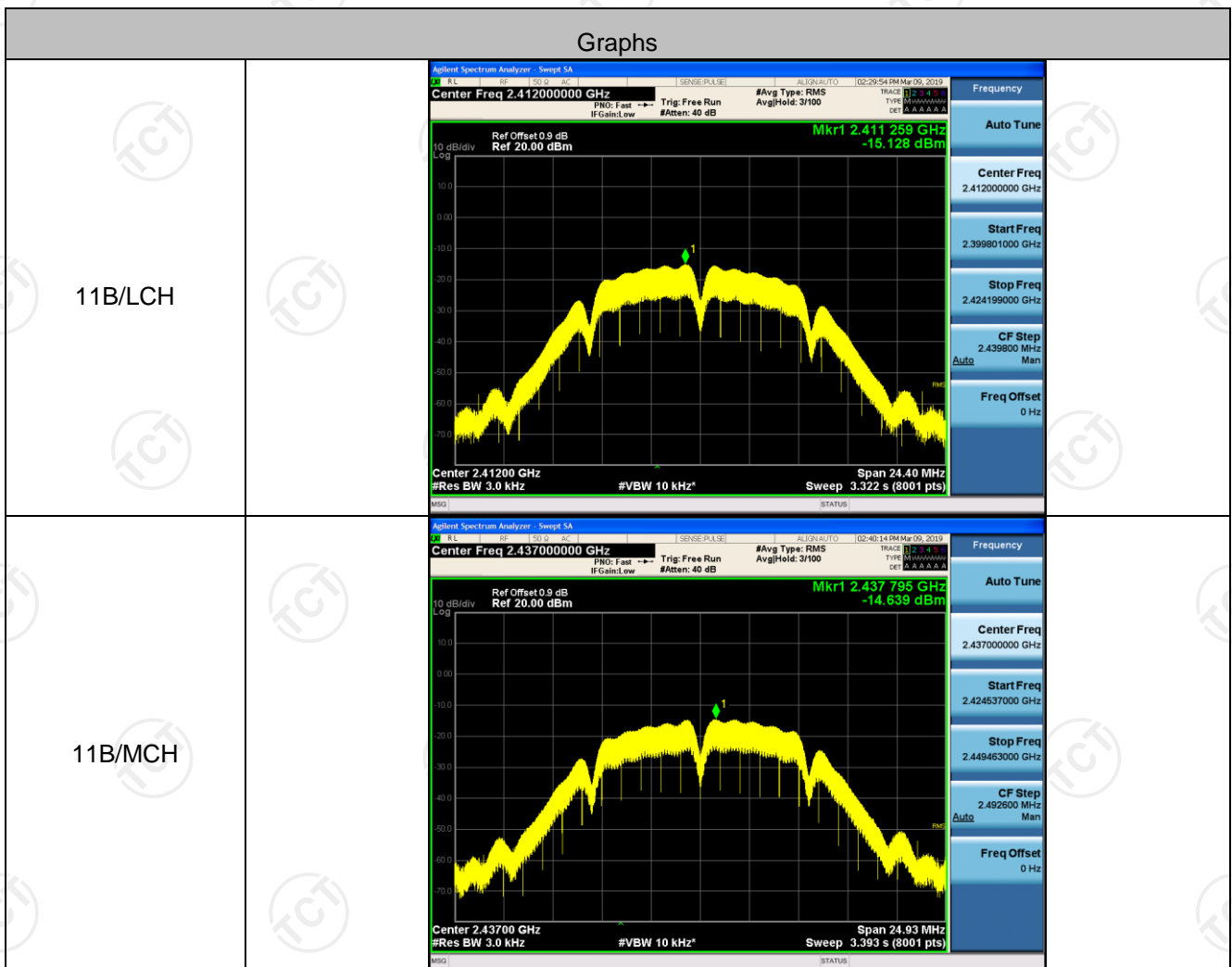


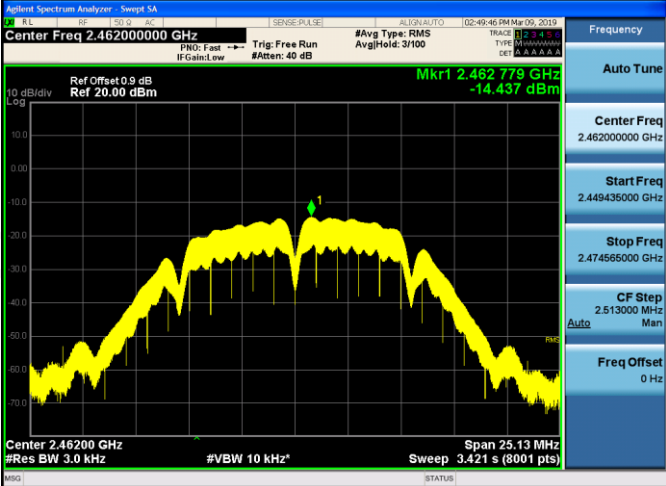
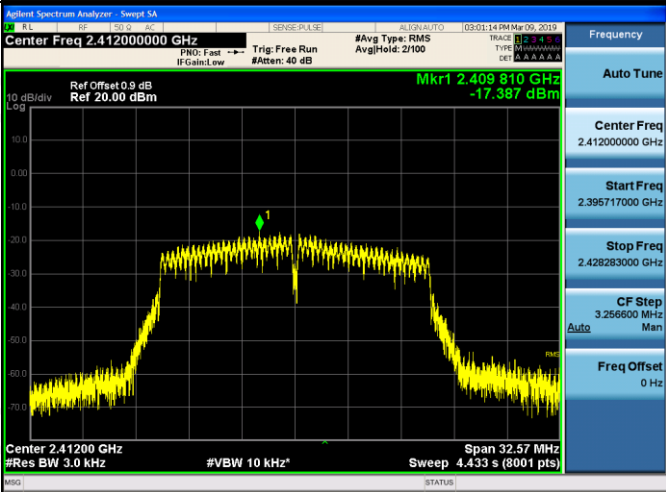
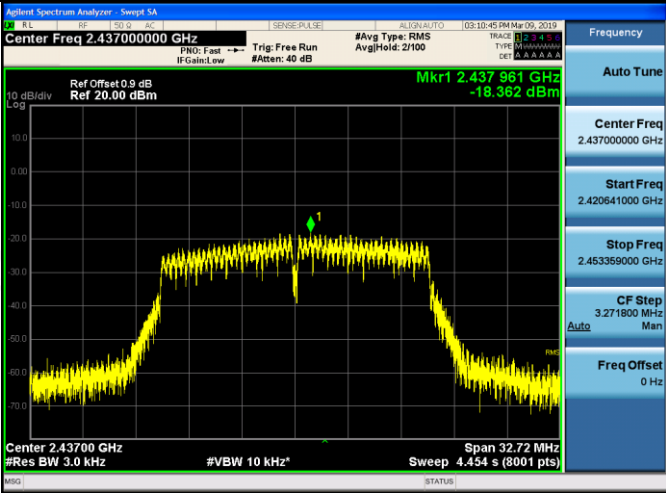
Power Spectral Density

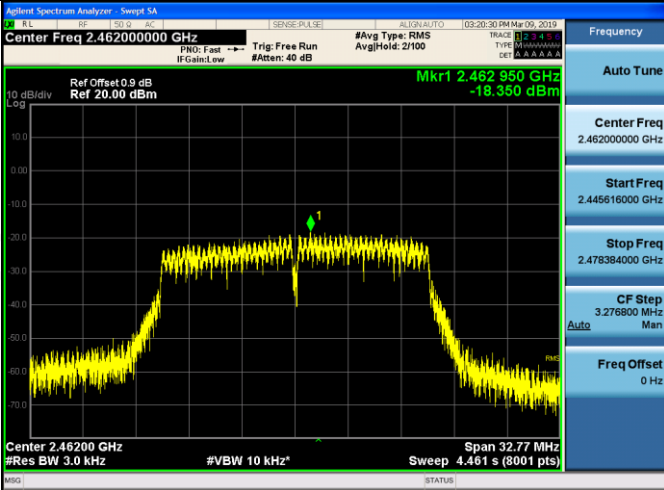
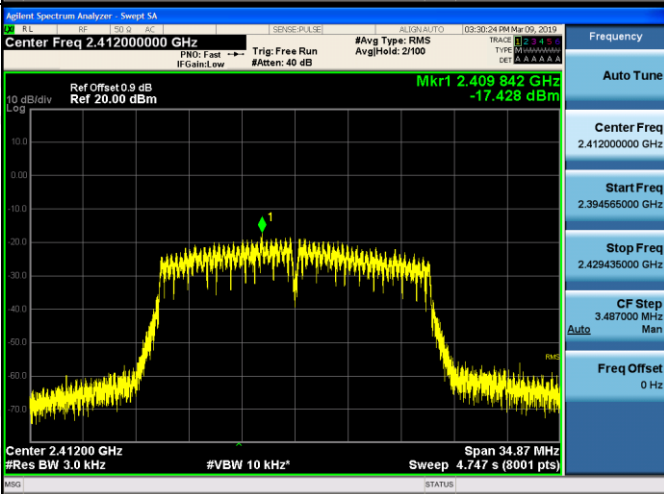
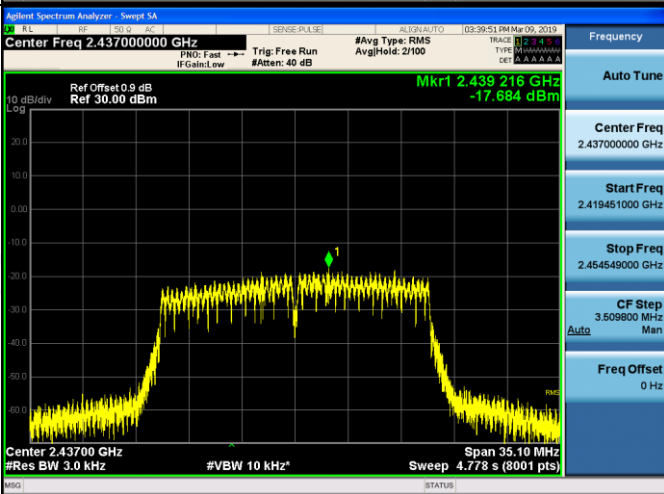
Result Table

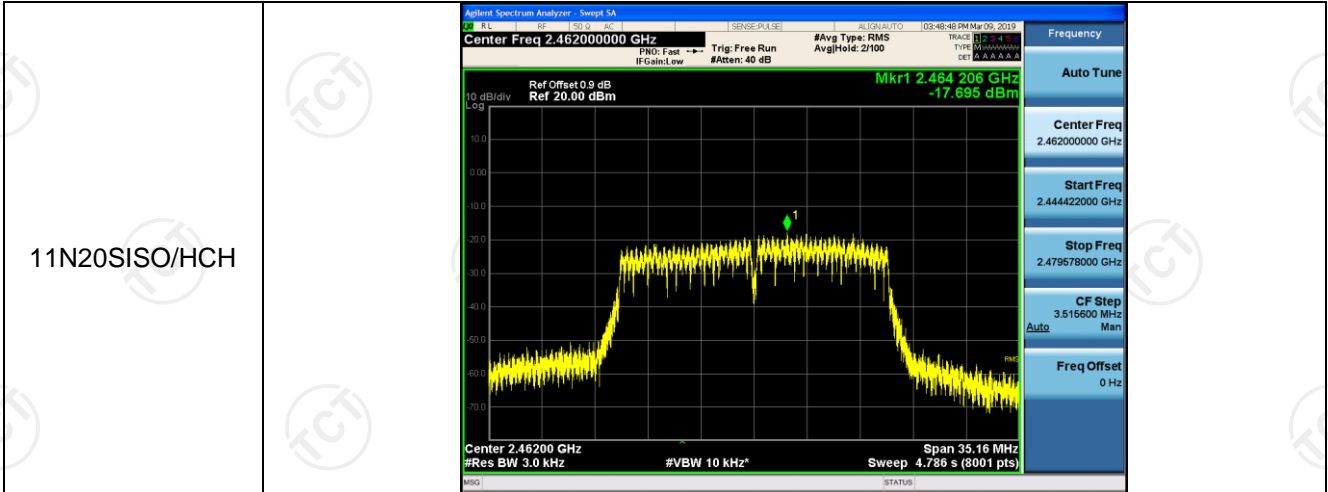
Mode	Channel	Meas.Level [dBm]	Verdict
11B	LCH	-15.128	PASS
11B	MCH	-14.639	PASS
11B	HCH	-14.437	PASS
11G	LCH	-17.387	PASS
11G	MCH	-18.362	PASS
11G	HCH	-18.350	PASS
11N20SISO	LCH	-17.428	PASS
11N20SISO	MCH	-17.684	PASS
11N20SISO	HCH	-17.695	PASS

Test Graph



<p>11B/HCH</p>		<p>Frequency</p> <p>Auto Tune</p> <p>Center Freq 2.46200000 GHz</p> <p>Start Freq 2.449435000 GHz</p> <p>Stop Freq 2.474565000 GHz</p> <p>CF Step 2.513000 MHz Auto Man</p> <p>Freq Offset 0 Hz</p>
<p>11G/LCH</p>		<p>Frequency</p> <p>Auto Tune</p> <p>Center Freq 2.41200000 GHz</p> <p>Start Freq 2.395717000 GHz</p> <p>Stop Freq 2.428283000 GHz</p> <p>CF Step 3.256600 MHz Auto Man</p> <p>Freq Offset 0 Hz</p>
<p>11G/MCH</p>		<p>Frequency</p> <p>Auto Tune</p> <p>Center Freq 2.43700000 GHz</p> <p>Start Freq 2.420641000 GHz</p> <p>Stop Freq 2.453359000 GHz</p> <p>CF Step 3.271800 MHz Auto Man</p> <p>Freq Offset 0 Hz</p>

<p>11G/HCH</p>		<p>Frequency</p> <p>Auto Tune</p> <p>Center Freq 2.46200000 GHz</p> <p>Start Freq 2.445616000 GHz</p> <p>Stop Freq 2.478384000 GHz</p> <p>CF Step 3.276800 MHz Auto Man</p> <p>Freq Offset 0 Hz</p>
<p>11N20SISO/LCH</p>		<p>Frequency</p> <p>Auto Tune</p> <p>Center Freq 2.41200000 GHz</p> <p>Start Freq 2.394565000 GHz</p> <p>Stop Freq 2.429435000 GHz</p> <p>CF Step 3.487000 MHz Auto Man</p> <p>Freq Offset 0 Hz</p>
<p>11N20SISO/MCH</p>		<p>Frequency</p> <p>Auto Tune</p> <p>Center Freq 2.43700000 GHz</p> <p>Start Freq 2.419451000 GHz</p> <p>Stop Freq 2.454549000 GHz</p> <p>CF Step 3.509800 MHz Auto Man</p> <p>Freq Offset 0 Hz</p>

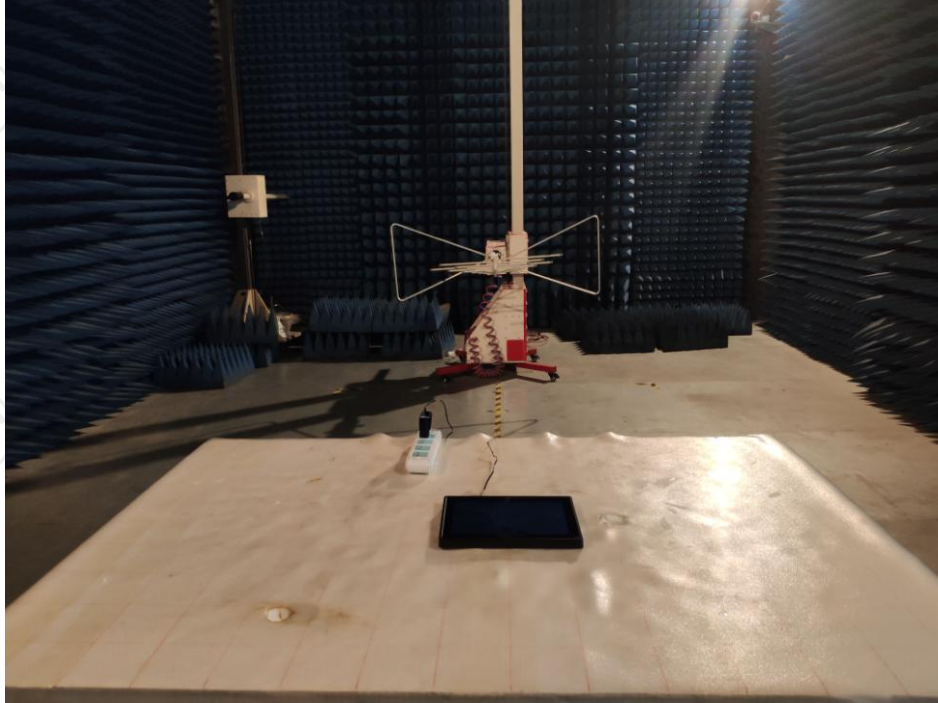


Appendix B: Photographs of Test Setup

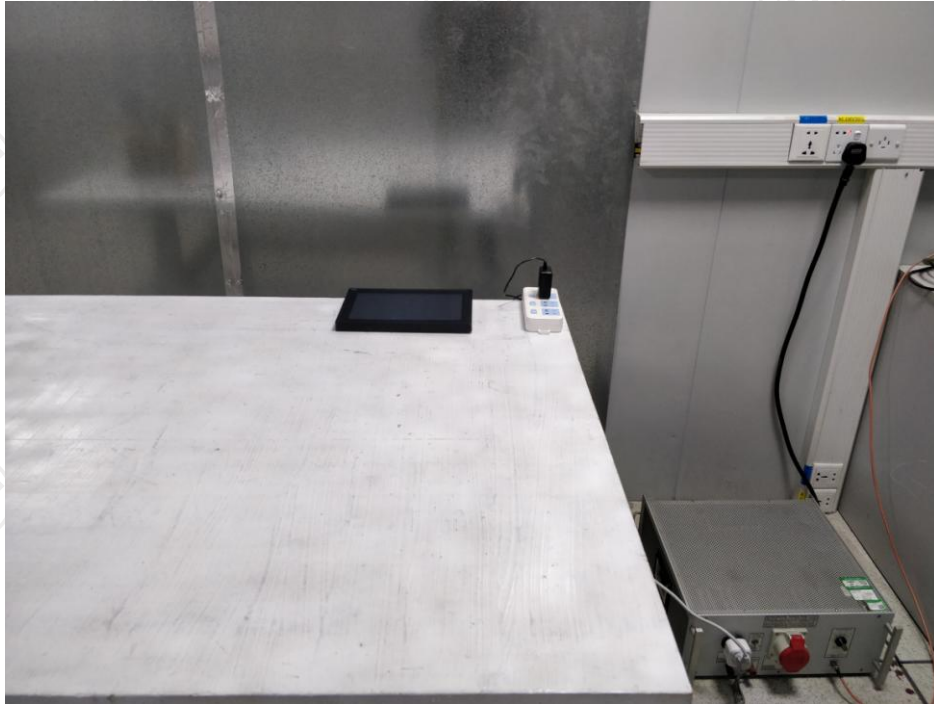
Product: Social Photo Frame

Model: HN-DPF1001

Radiated Emission



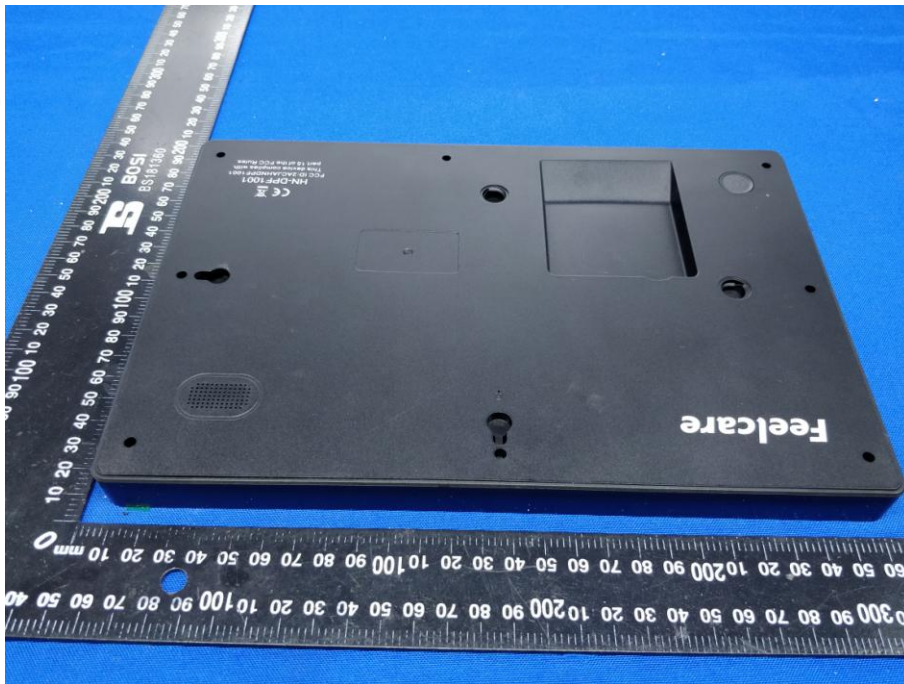
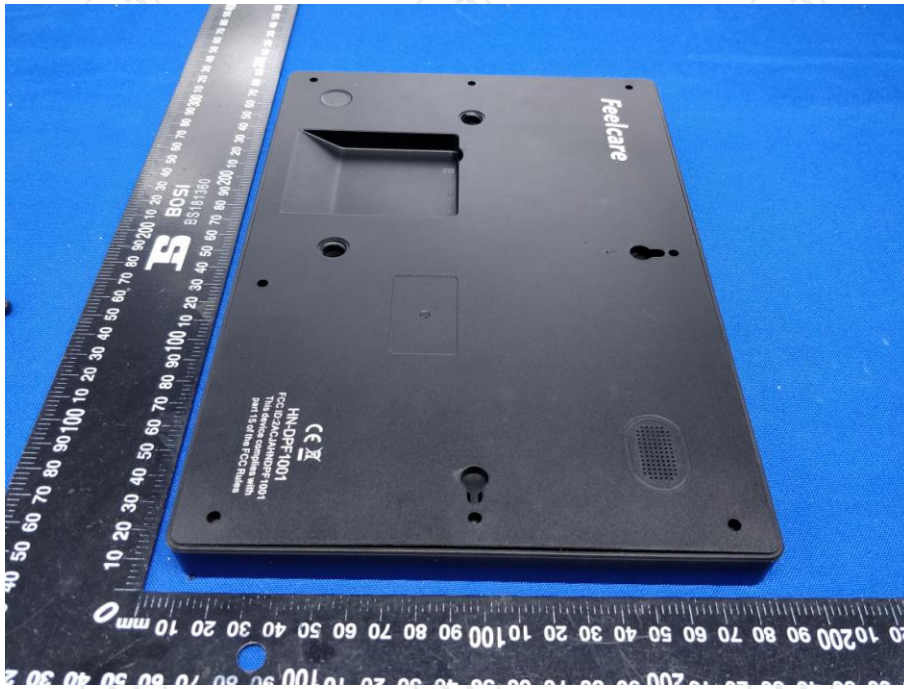
Conducted Emission

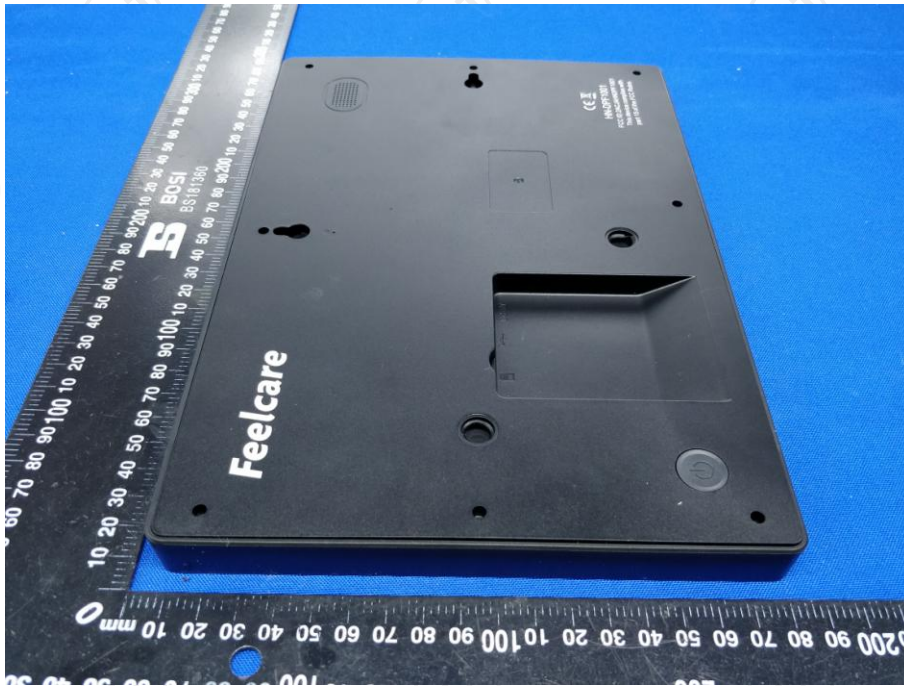


Appendix C: Photographs of EUT
Product: Social Photo Frame
Model: HN-DPF1001
External Photos

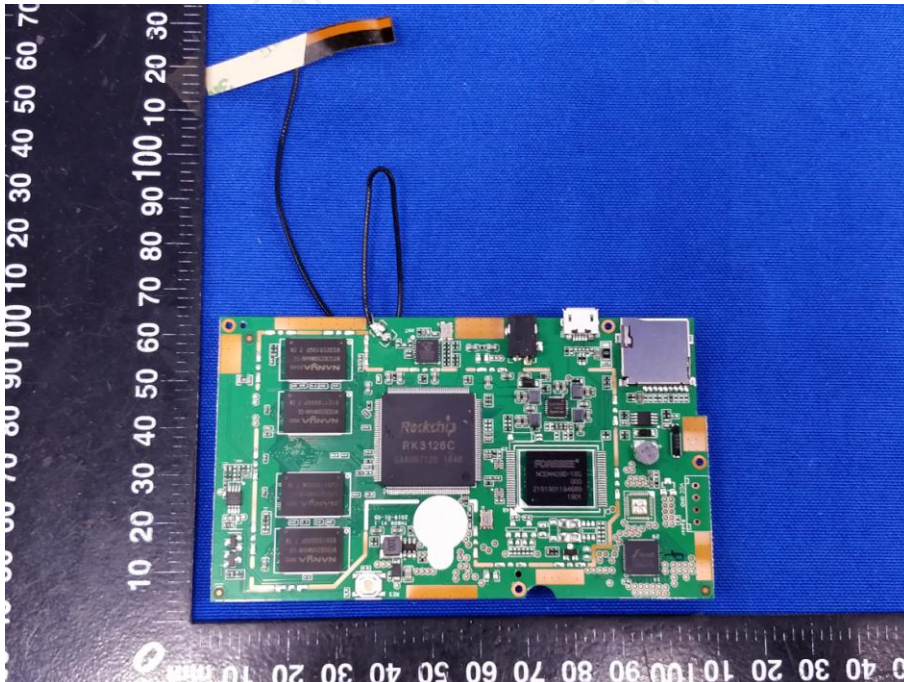
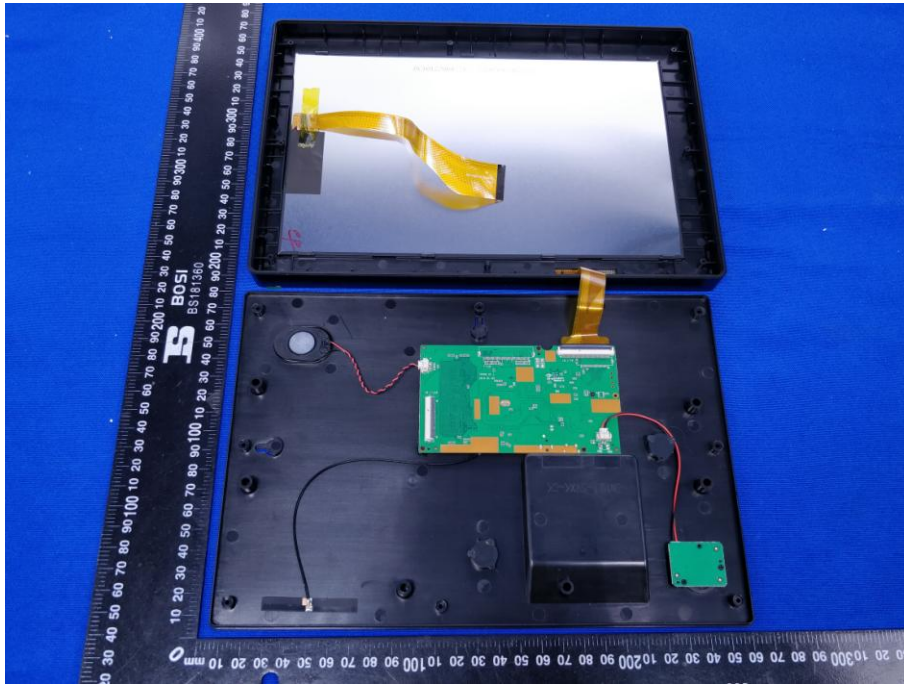


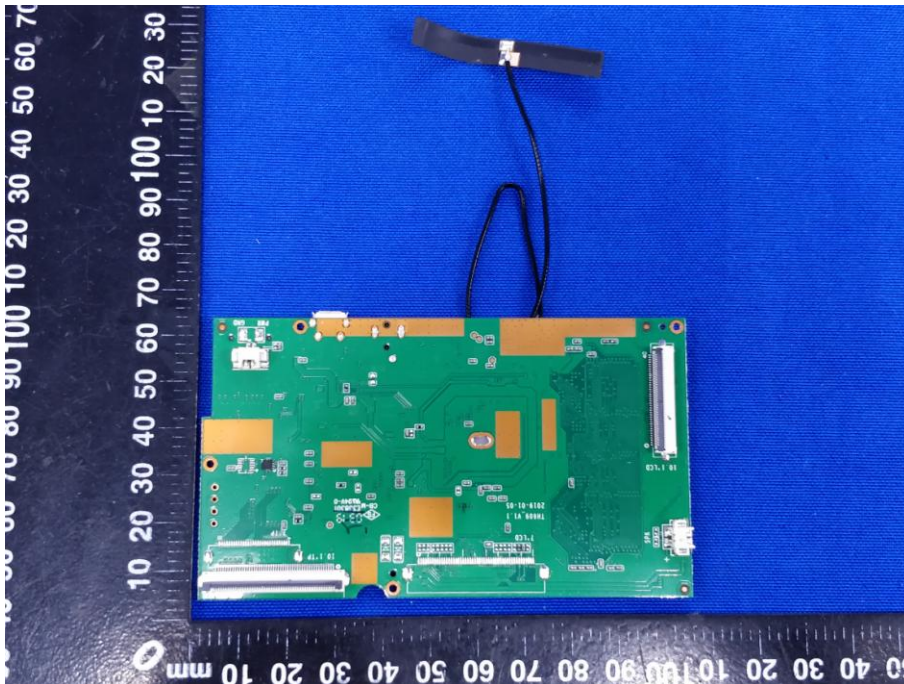
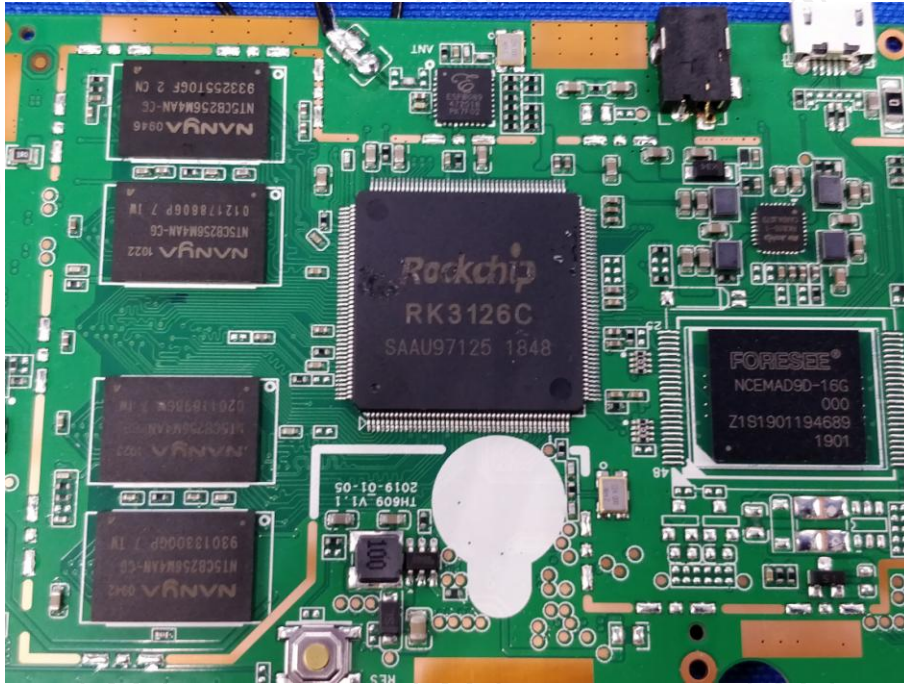


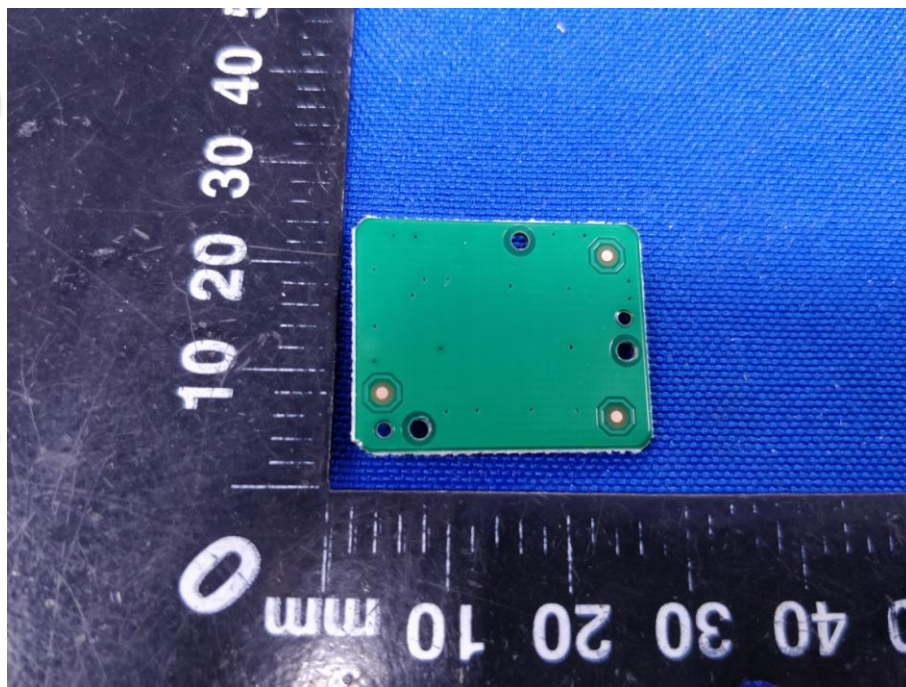
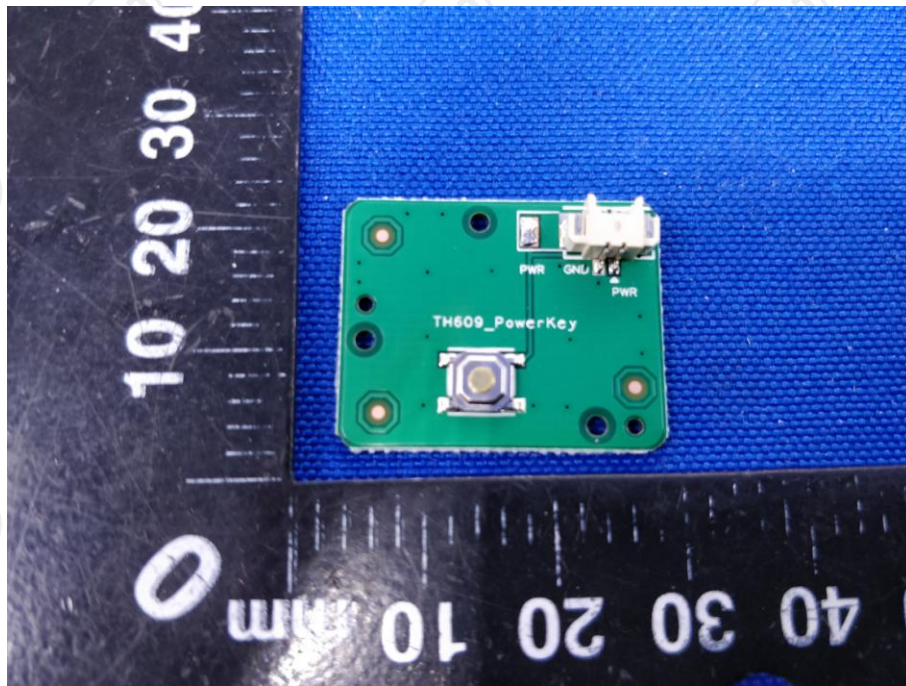




Product: Social Photo Frame
Model: HN-DPF1001
Internal Photos







*******END OF REPORT*******