



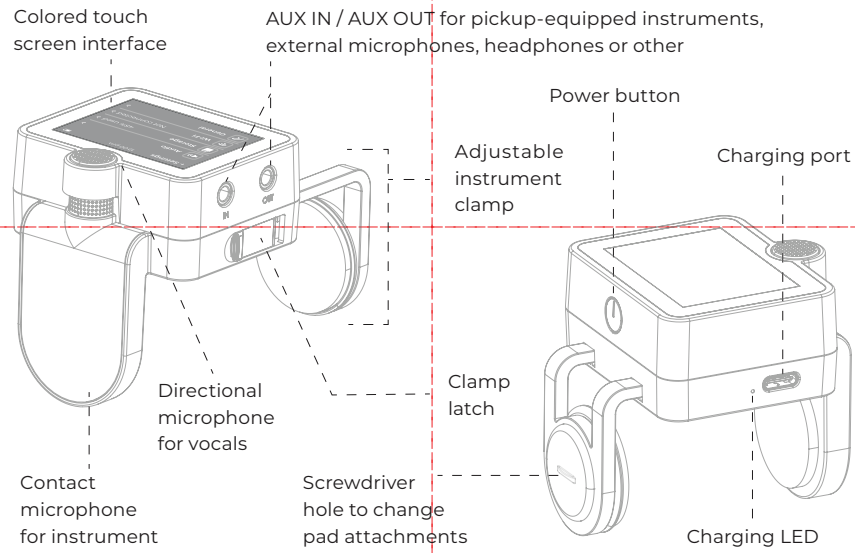
QUICKSTART GUIDE

FR: Pour le mode d'emploi en français, visiter
ES: Para el manual de instrucciones en español, visite
DE: Die deutsche Bedienungsanleitung finden sie unter
JP: 日本語の取扱説明書は

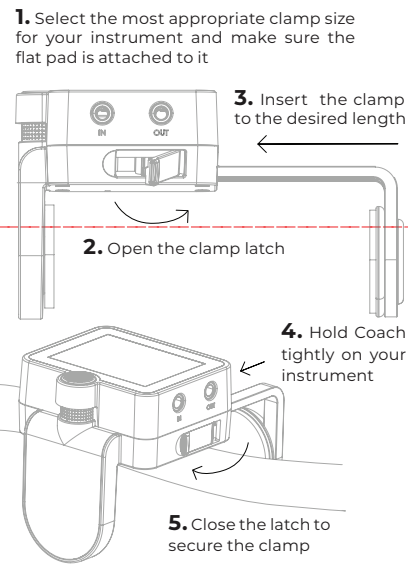
www.roadiemusic.com/downloads/coach-guide



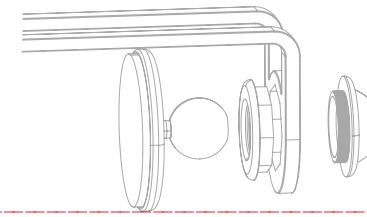
1 MEET YOUR COACH



2 ATTACH COACH



Note: For round back instruments, switch the flat pad for the ball-head attachment. For a detailed explanation on how to set it up, watch the video linked to the QR code below.



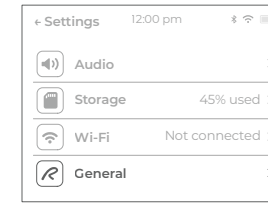
www.roadiemusic.com/tutorials/round-back



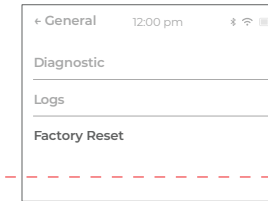
TROUBLESHOOT

FACTORY RESET

Before performing a factory reset, make sure you have installed the latest firmware and that the issue is still persisting.



1. Access the "Settings" from the homescreen, and then select "General"



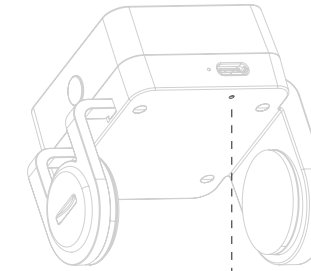
2. Scroll all the way down to "Factory Reset"

Warning!

Factory reset deletes all of your data and resets your device to factory settings.

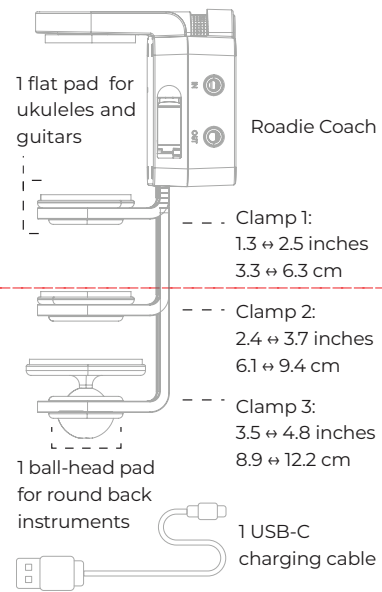
HARD RESET

If your Roadie Coach is frozen, a hard reset may be required. It will not delete your data.

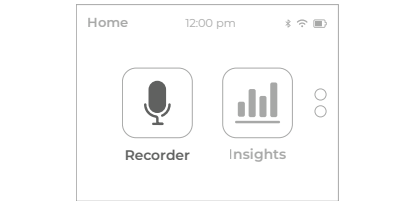


To perform a hard reset, enter a pin into the reset pinhole at the back of the Coach

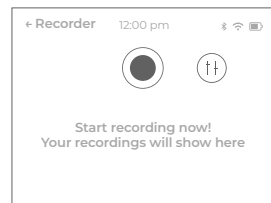
INSIDE THIS BOX



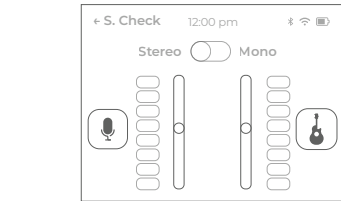
3 RECORD WITH COACH



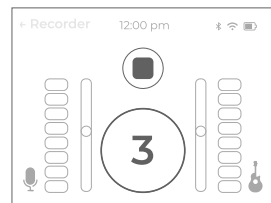
1. Turn Coach ON and click on "Recorder" on the homescreen



2. To perform a sound check, press on the stop button. To record, press on the record button and continue to step 4

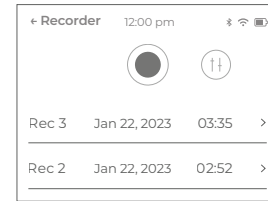


3. Adjust the gain using the sliders to avoid clipping. Tap on the icons to change inputs

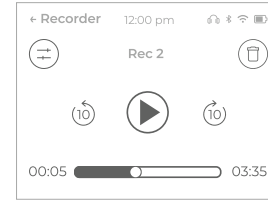


4. Recording will start after the countdown. Change gains using the sliders or press the stop button to stop recording

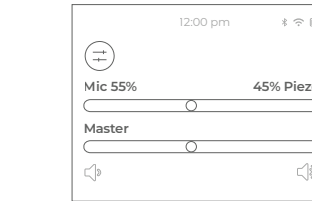
4 FIND RECORDINGS



1. Recorded tracks will show in "Recorder". You can scroll down to access older recordings



2. Press on any recording to enter playback mode. Here, you can also delete the track or adjust the input volumes (refer to step 3)



3. Click on the minus icon to enter the mixing screen and adjust the input volumes

Notes:

- When recording two inputs, the file will be saved as stereo with one input on the left channel and the other on the right channel.
- You can also connect Coach to your PC/MAC via USB to retrieve your recordings.

5 DOWNLOAD THE COACH MOBILE APP

Download the free Roadie Coach app to manage your recordings easily and access Coach's educational content. The library includes free public domain songs and an optional in-app subscription for unlimited access to all licensed songs.

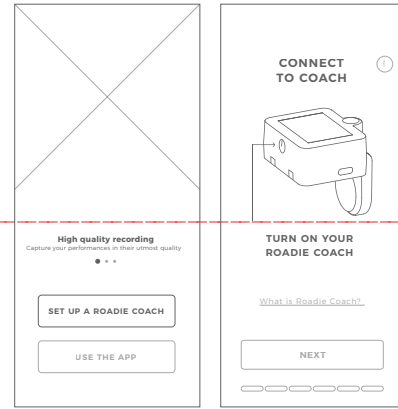
www.roadiemusic.com/coach-app



Download on the App Store

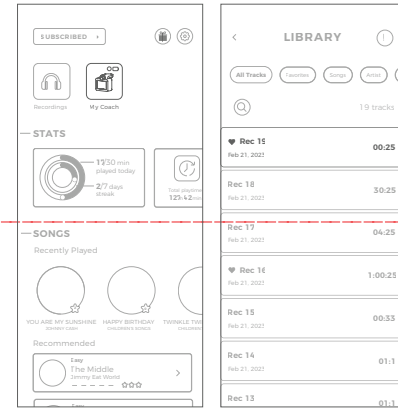
GET IT ON Google Play

6 PAIR TO THE APP



1. Launch the mobile app and click on "Set up a Roadie Coach"
2. Follow the on-screen instructions. You only need to do this once

7 MANAGE TRACKS



1. Once your Coach is paired (see "Section 6") and turned on, press on the "My Coach" button on the homescreen
2. Select any track to listen to it or download it. Downloaded tracks will appear under the "Recordings" section on the homescreen

GET MORE GUIDANCE

For the full user manual & FAQs, visit www.roadiemusic.com/support



SAFETY INSTRUCTIONS

Please read these instructions, keep them and follow them.
Do not tamper with your device.
Do not attempt to disassemble or open your device. Substances contained in this product and/or its battery may damage the environment and/or human health if handled and disposed of improperly.
Do not expose your device to extremely high or low temperatures.
Do not leave your device in direct sunlight for an extended period of time.
Do not leave your device near open flames.
Do not dispose of your device in a fire. The battery could explode.
Do not use abrasive cleaners to clean your device.
Do not place your device in a dishwasher, washing machine or dryer.
Regardless of what reasons cause unit damage, please ask for the maintenance personnel to repair it.

FCC Radiation Exposure Statement

This equipment complies with FCC RF radiation exposure limits set forth for an uncontrolled environment. This equipment should be installed and operated with minimum distance 10mm between the radiator and your body.

FCC Statement

This device complies with Part 15 of the FCC Rules, operation is subject to the following two conditions: (1) This device may not cause harmful interference, and (2) this device must accept any interference received, including interference that may cause undesired operation.

Warning: Changes or modifications to this unit not expressly approved by the party responsible for compliance could void the user's authority to operate the equipment.

Note: This equipment has been tested and found to comply with the limits for a Class B digital device, pursuant to Part 15 of the FCC Rules. These limits are designed to provide reasonable protection against harmful interference in a residential installation. This equipment generates, uses and can radiate radio frequency energy and, if not installed and used in accordance with the instructions, may cause harmful interference to radio communications. However, there is no guarantee that interference will not occur in a particular installation. If this equipment does cause harmful interference to radio or television reception, which can be determined by turning the equipment off and on, the user is encouraged to try to correct the interference by one or more of the following measures: Reorient or relocate the receiving antenna. Increase the separation between the equipment and receiver.

Connect the equipment into an outlet on a circuit different from that to which the receiver is connected. Consult the dealer or an experienced radio/TV technician for help.

ISED Statement

This device contains license-exempt transmitter(s)/receiver(s) that comply with Innovation, Science and Economic Development Canada's license-exempt RSS(s).
Operation is subject to the following two conditions:
This device may not cause interference.
This device must accept any interference, including

interference that may cause undesired operation of the device.

L'émetteur/récepteur exempt de licence contenu dans le présent appareil est conforme aux CNR d'Innovation, Sciences et Développement économique Canada applicables aux appareils radio exempts de licence. L'exploitation est autorisée aux deux conditions suivantes:
L'appareil ne doit pas produire de brouillage.
L'appareil doit accepter tout brouillage radioélectrique subi, même si le brouillage est susceptible d'en compromettre le fonctionnement.

ISED Radiation Exposure Statement

The equipment complies with ISED Radiation exposure limits set forth for uncontrolled environment. This equipment should be installed and operated with minimum distance 10mm between the radiator and your body.

Déclaration d'exposition aux rayonnements ionisants: L'équipement est conforme aux limites d'exposition aux rayonnements ionisants fixées pour l'environnement non contrôlé. Cet équipement devrait être installé et utilisé avec une distance minimale de 10mm entre le radiateur et votre corps.

Caution

The battery shall not be exposed to excessive heat such as sunshine, fire or the like. Danger of explosion if battery is incorrectly replaced. Replace only with the same or equivalent type.

Correct disposal of this product

This marking indicates that this product should not be disposed of with other household wastes throughout the EU. To prevent possible harm to the environment or human health from uncontrolled waste disposal, recycle it responsibly to promote the sustainable reuse of material resources. To return your used device, please use the return and collection systems or contact the retailer where the product was purchased. They can take this product for environmentally safe recycling.
Operating temperature 32-104°F (0-40°C).

Disclaimer

This manual describes the version of Roadie as of July 2023. Although Band Industries has made every effort to ensure that the information contained in it was correct at publish time, it does not assume and hereby disclaim any liability to any party for any loss, damage or disruption caused by errors or omissions, whether such errors or omissions result from negligence, accident or any other cause. The information in this Product Manual is subject to change without notice. Band Industries makes no representations or warranties with respect to the content hereof and specifically disclaims any implied warranties of merchantability or fitness for any particular purpose. Band Industries reserves the right to revise this publication and to make changes from time to time in the content hereof without obligation of Band Industries to notify any person of such revision or changes.

Copyright

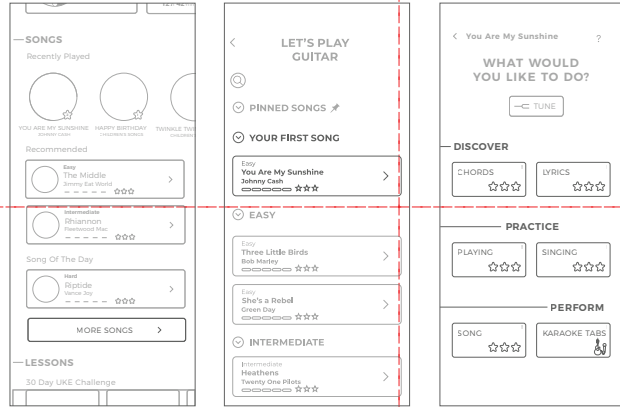
This publication, including all photographs, illustrations and software, is protected under international copyright laws, with all rights reserved. Neither this Product Manual, nor any of the material contained herein, may be reproduced without written consent of Band Industries.

Trademark recognition

Band Industries, the Band Industries logo, Roadie, Roadie Coach, and the Roadie Coach Logo are trademarks and/or registered trademarks of Band Industries, Inc. in the US, EU and other countries.

8 LEARN WITH THE COACH APP

Make sure Coach is paired to the app and that it is turned on (see "Section 6").

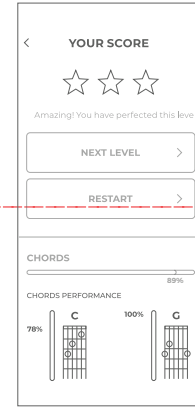


1. Launch the app and press on "More Songs" to see all the songs
2. Choose the song you would like to learn
3. Pick a level and start practicing



4. A "streaming" screen will automatically appear on your Coach

Note: For a more accurate scoring of both your playing and singing, adjust the gain of the microphones to avoid clipping or insufficient audio pick up.



5. Practice following the in-app guidance and enjoy the feedback!

- f Roadieofficial
- t Roadieofficial
- o Roadieofficial
- y Roadieofficial
- l Roadiemusicofficial
- g www.roadiemusic.com

WARRANTY

Your Coach has a 1 YEAR WARRANTY. To claim the warranty, contact our support team

GET SUPPORT

Reach out to us anytime at SUPPORT@ROADIEMUSIC.COM

Model Number: RC100

EU Importer: CCS Express GmbH
Address: Lilienthalstr. 8, 85399 Hallbergmoos, Deutschland

UK Importer: A.C.T.S Global Ltd No. 07162744.
Address: 3rd Floor, Norvin House, 45-55 Commercial Street, London E1 6BD, UK