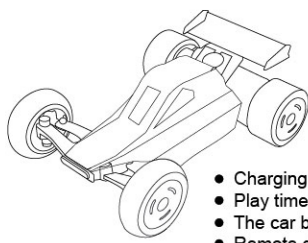




**The packaging must be retained since it contains important information.  
If the new car can't work, please rotate the main wheels continuously until it work normally.**

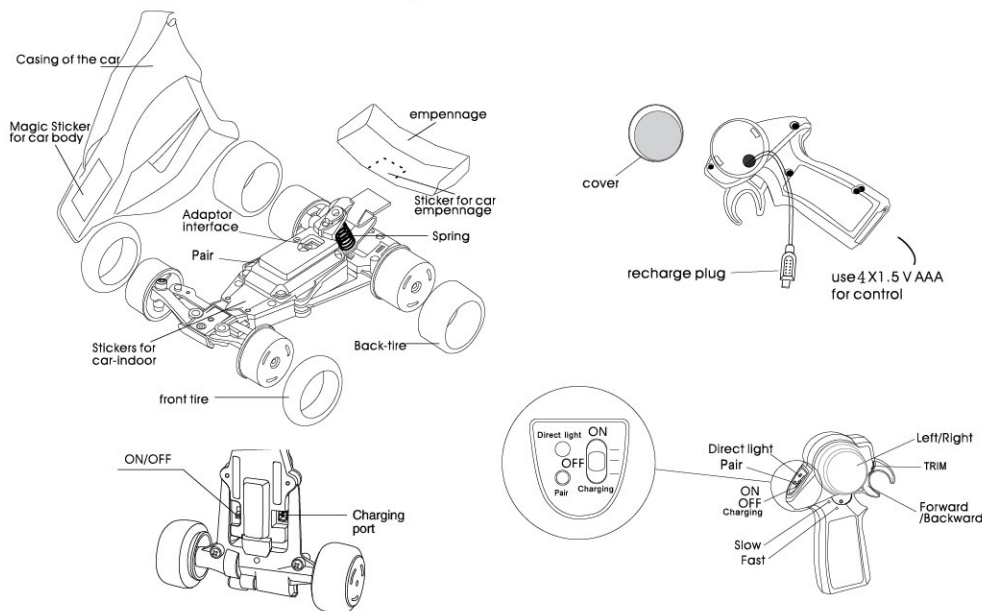


## 2. 4G



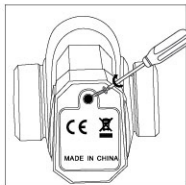
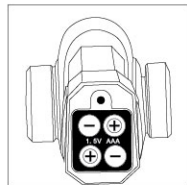
- Charging time: about 30 minutes
- Play time: about 7 minutes
- The car battery Li-ion 3.7V 85mAh
- Remote distance 20 meters

### FEATURE OF CAR



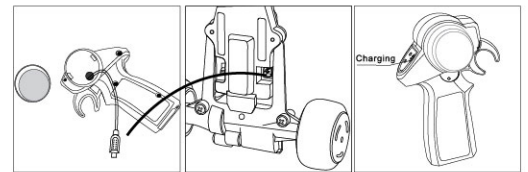
## ASSEMBLE

- 1) Open the cover of battery case
- 2) Use 4 x 1.5V AAA batteries inside, attention the polarity
- 3) Close the cover after your putting



## CHAGE

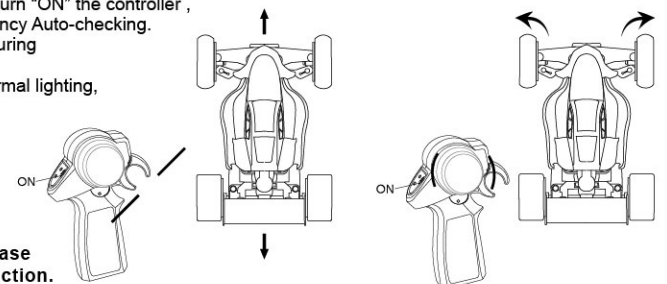
When recharged fully, pls take away the recharge wire out of the car. Don't keep them contact after full-charged.



The battery chargers are to be regularly examined for damage to the cord, plug, enclosure and other parts, and in the event of such damage, they must not be used until the damage has been repaired.

## OPERATION

1. Please turn "ON" the product , then turn "ON" the controller , wait for a few seconds for the frequency Auto-checking.
2. Please do not touch any other key during frequency Auto-checking.
3. Their power light from flashing to normal lighting , frequency Auto-checking completed!
4. If you want to connect another car , please press "Pair" button. Wait for a few seconds for the frequency Auto-checking.



- When the speed slow down, please change the battery as the instruction.

## Safe Direction

1. Not for children under 8.
2. Don't put the cloth, hair and fingers near to the wheels.
3. During the operation time, don't put your hand near to the car. Or you will be hurt. Don't put the control and car to heatplace, (such as microwave, strong sunlight and etc.)
4. Don't play it outside, when it rains. Don't make the car wet.
5. Don't play it on the sand
6. Don't remove or assemble the control by children themselves.
7. If there is something wrong with the car, please repair by adult or professional worker.

## Warning

This product is not suitable for child under 8. Please check the battery, wire plug and other parts regularly. If there is any damage, please repair it immediately.

### Battery Using Direction

1. Use 4x1.5V "AAA" batteries in control.
2. Attention to the polarity when installing or charging the battery.
3. Non-rechargeable batteries are not to be recharged.
4. Rechargeable batteries are only to be charged under adult supervision.
5. Rechargeable batteries are to be removed from the toy before being charged.
6. Different types of batteries or new and used batteries are not to be mixed.
7. Batteries are to be inserted with the correct polarity.
8. Exhausted batteries are to be removed from the toy.
9. The supply terminals are not to be short-circuited.

### Correct Operation of Car

1. Play it far away the high-voltage line, high building or wall.  
Please keep the antenna up to make the car function workable.
2. If the car don't react good, please change the battery.
3. Working time of car is corresponding to your way of control.
4. The available control distance is 40-50 meters.

Remarque: Toute modification de ce produit annule l'autorité de l'utilisateur à utiliser cet équipement.