

Wall Plate Audio Amplifier with B/T Wireless v5.0 User Manual

FEATURES

- B/T v5.0 with apt-X
- 45W class-D high quality power amplifier
- Compact size wall plate design
- Easy installation
- Configurable Device Name & PIN Code

SPECIFICATIONS

- Audio Inputs: B/T Receiver or stereo audio line level
- B/T Version: B/T v5.0 compliant with apt-X
- B/T Receive Distance: 30 Meters (open space)
- Power Amplifier Type: Stereo Class-D
- Output power: 45W(rms) per channel (@ RL=4 ohm)
- THD+N: 0.1 % (@ RL=4 ohm, f = 1 kHz)
- Minimum Load Resistance: 4 ohm
- Includes Speaker Protection circuit.
- Power Source: 24 VDC
- 3 min link-lost timeout function.
(B/T automatically switch to pairing state if reconnecting fail.)
- Audio priority: B/T > Aux In

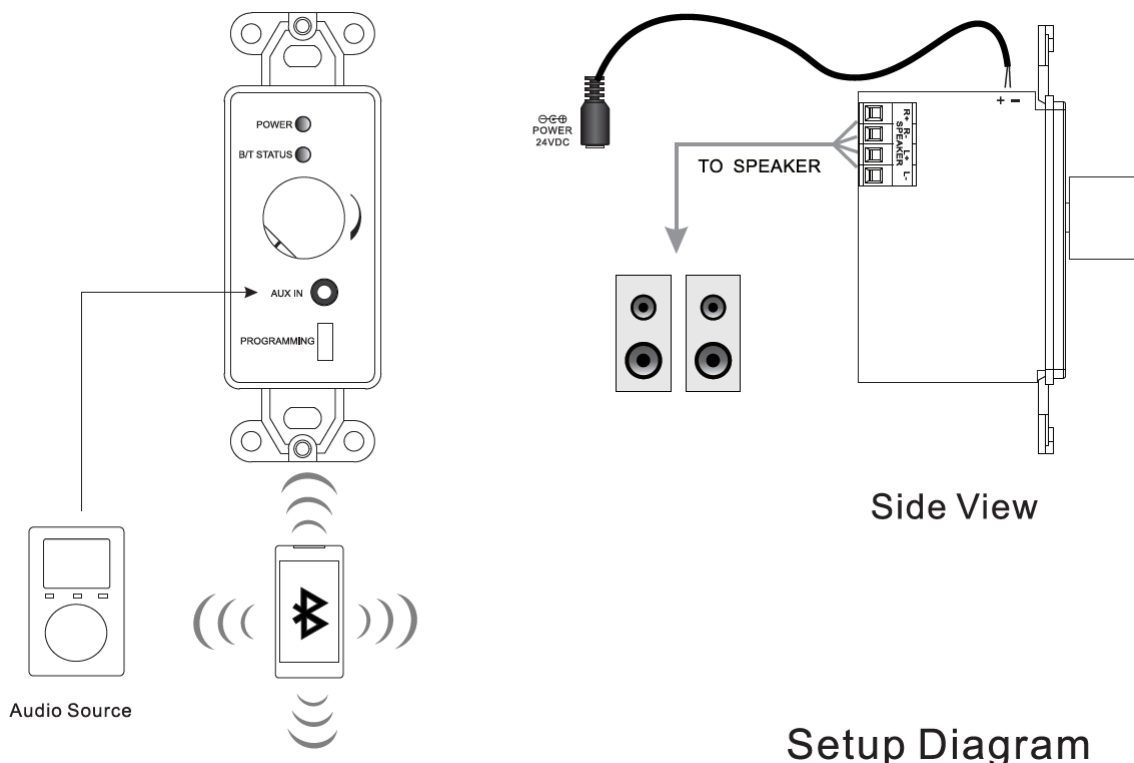
CONNECT AND OPERATE

STEP 1: Install the unit in wall and connect power and speaker cables

STEP 2: Turn on the rotary switch to power up

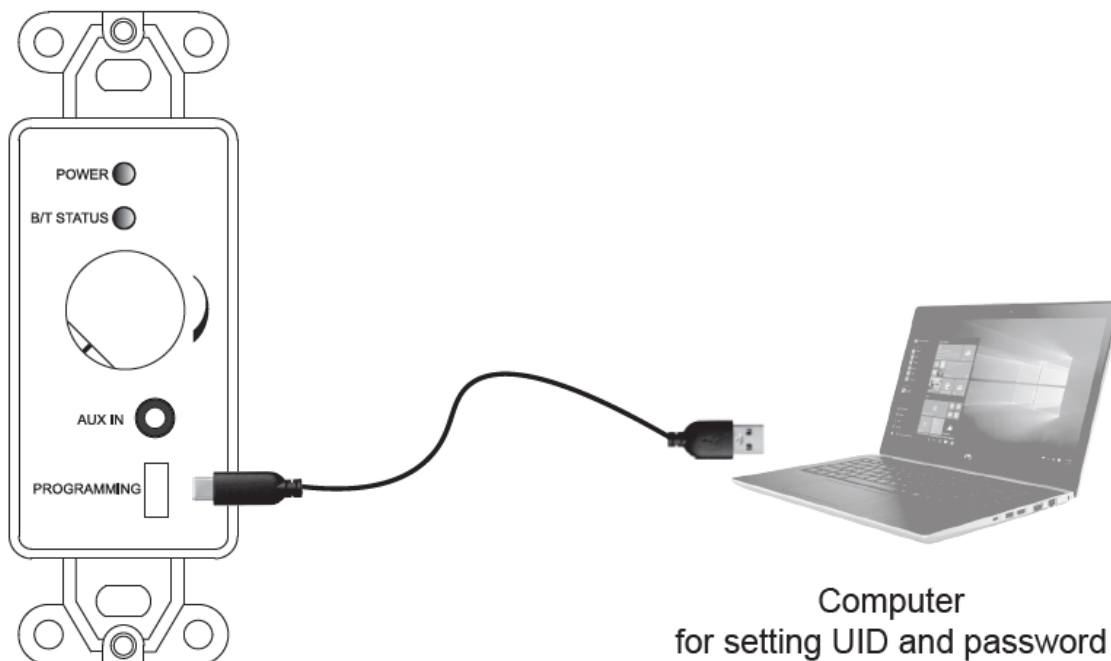
STEP 3: B/T status LED quick blinking in open pairing mode, connect your B/T devices to **B/T Audio Amplifier**

STEP 4: For Aux-In source, plug-in audio cable and play. The unit will automatically switch between B/T and Aux-In



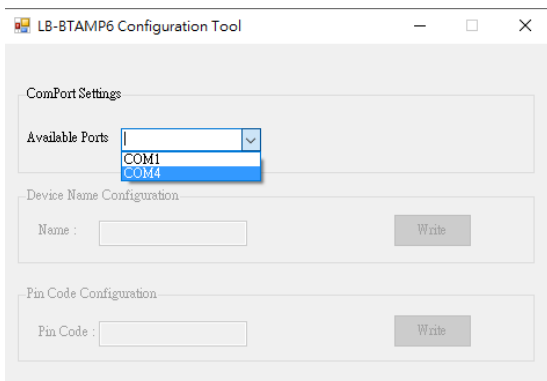
Configure Device Name & PIN Code

STEP1: Connect the USB TTL Cable to the computer's USB port and then connect the other end of the cable to the Micro USB Port on the wall plate.

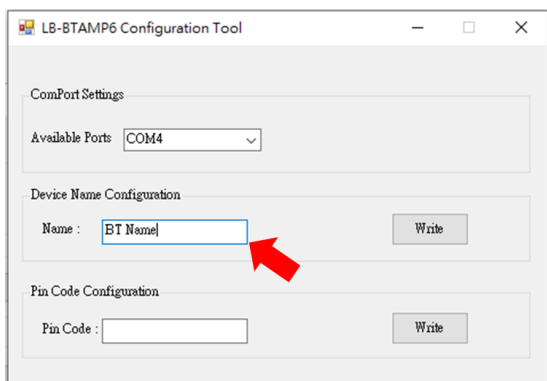


STEP2: Launch the Configuration Tool software.

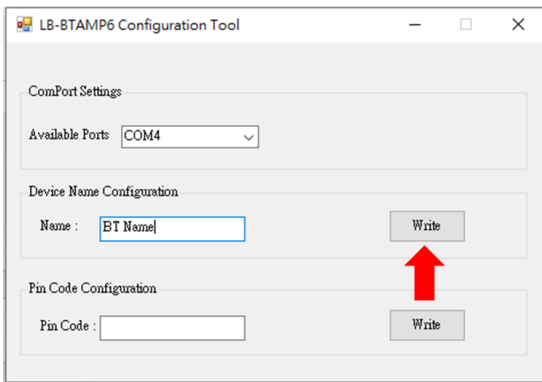
STEP3: Select corresponding Com Port



STEP4: Enter New Device Name

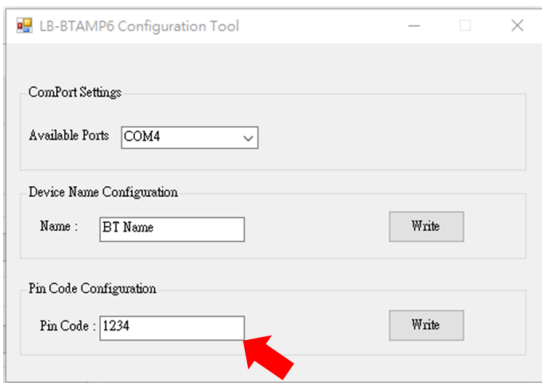


STEP5: Write to device

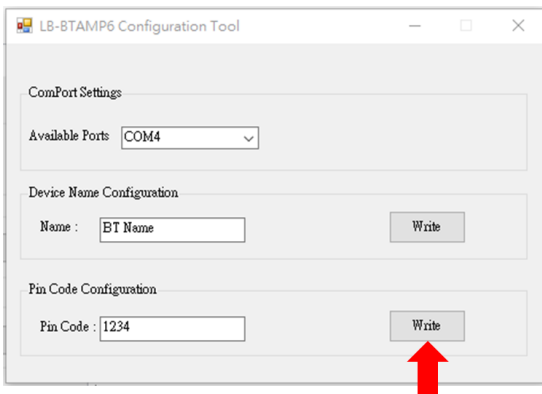


STEP6: Confirm the Bluetooth Device name with Smartphone. If name is not changed. Make sure USB TTL Cable is connected to the Micro USB Port on the wall plate and go back STEP1 -STEP5

STEP7: Enter New Pin Code



STEP8: Write to device



STEP9: Confirm the Bluetooth Pin Code with Smartphone. If Pin Code is not changed. Make sure USB TTL Cable is connected to the Micro USB Port on the wall plate and go back STEP7 – STEP8

This device complies with part 15 of the FCC Rules. Operation is subject to the following two conditions: (1) This device may not cause harmful interference, and (2) this device must accept any interference received, including interference that may cause undesired operation.

Any Changes or modifications not expressly approved by the party responsible for compliance could void the user's authority to operate the equipment.

Note: This equipment has been tested and found to comply with the limits for a Class B digital device, pursuant to part 15 of the FCC Rules. These limits are designed to provide reasonable protection against harmful interference in a residential installation. This equipment generates uses and can radiate radio frequency energy and, if not installed and used in accordance with the instructions, may cause harmful interference to radio communications. However, there is no guarantee that interference will not occur in a particular installation. If this equipment does cause harmful interference to radio or television reception, which can be determined by turning the equipment off and on, the user is encouraged to try to correct the interference by one or more of the following measures:

- Reorient or relocate the receiving antenna.
- Increase the separation between the equipment and receiver.
- Connect the equipment into an outlet on a circuit different from that to which the receiver is connected.
- Consult the dealer or an experienced radio/TV technician for help.

RF warning for Portable device: The device has been evaluated to meet general RF exposure requirement. The device can be used in portable exposure condition without restriction.