

In -Wall CSR Bluetooth v5.0 Music Receiver

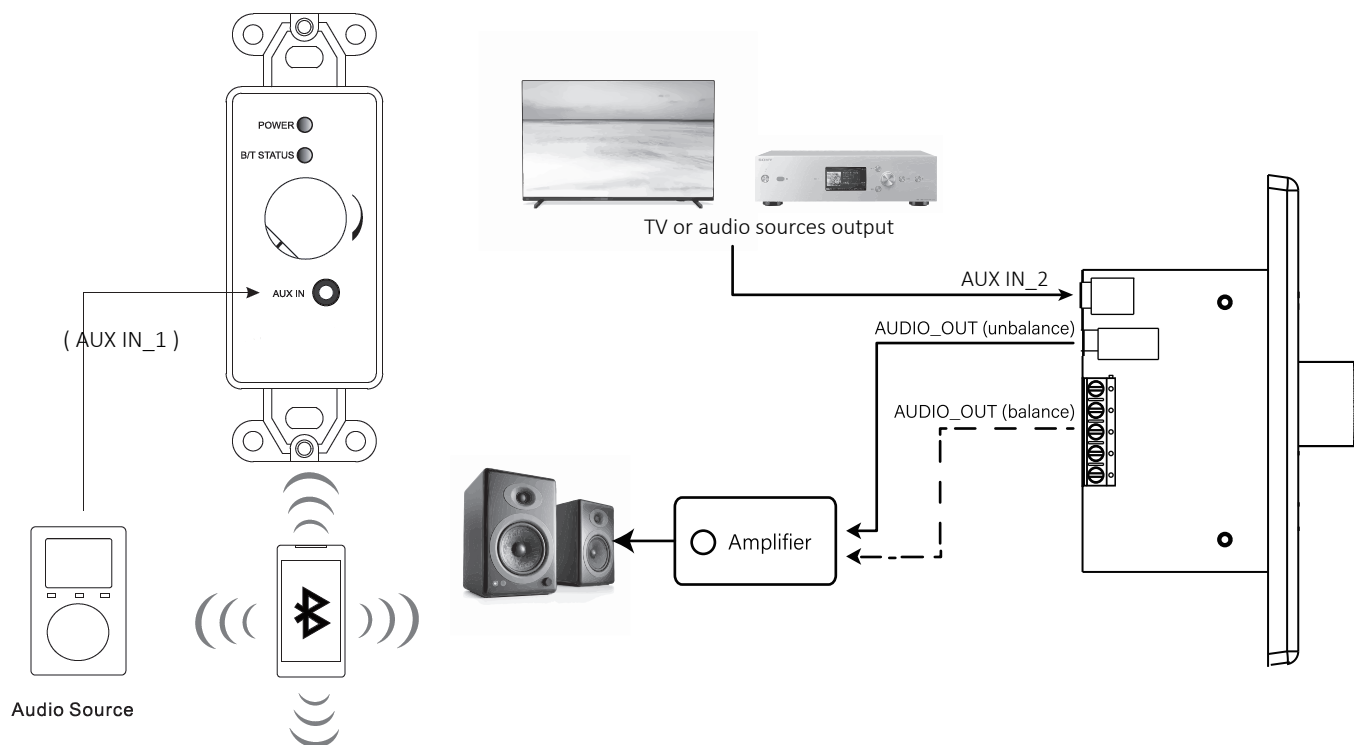
Features & Specifications

- Compact size wall plate design.
- Easy installation.
- Bluetooth version : 5.0 with apt-X
- Audio Inputs : Bluetooth receiver or stereo audio line level.
- Audio priority : Bluetooth > Aux In
- AUX IN_1 (Front) mixed with AUX IN_2(Back)
- Audio outputs : Stereo audio phone jack(Unbalanced)& 5-pin screw terminal(Balanced)
- Bluetooth receive distance : 30 Meters (open space)
- Power source : 5VDC/1A

Bluetooth Blue LED Status:

LED state	Statement
Blue led on : 1 sec , off : 2 sec , repeat	All profiles are standby but not connected with any Bluetooth device yet.
Blue led flash every 2 sec	A2DP or HFP is connected.
Blue led flash twice every 2 sec	On A2DP streaming state.
Blue led On: 150ms, Off: 150ms repeat	Enter pairing mode.

Set Up



Model : A-1474WPA, A-1474WP

FCC WARNING

This device complies with part 15 of the FCC Rules. Operation is subject to the following two conditions: (1) this device may not cause harmful interference, and (2) this device must accept any interference received, including interference that may cause undesired operation.

Any changes or modifications not expressly approved by the party responsible for compliance could void the user's authority to operate the equipment.

NOTE: This equipment has been tested and found to comply with the limits for a Class B digital device, pursuant to Part 15 of the FCC Rules. These limits are designed to provide reasonable protection against harmful interference in a residential installation. This equipment generates, uses and can radiate radio frequency energy and, if not installed and used in accordance with the instructions, may cause harmful interference to radio communications. However, there is no guarantee that interference will not occur in a particular installation.

If this equipment does cause harmful interference to radio or television reception, which can be determined by turning the equipment off and on, the user is encouraged to try to correct the interference by one or more of the following measures:

- Reorient or relocate the receiving antenna.
- Increase the separation between the equipment and receiver.
- Connect the equipment into an outlet on a circuit different from that to which the receiver is connected.
- Consult the dealer or an experienced radio/TV technician for help.

To maintain compliance with FCC's RF Exposure guidelines, This equipment should be installed and operated with minimum distance between 20cm the radiator your body: Use only the supplied antenna.

FCC ID: 2ACIA-TTBT014

Warning: Changes or modifications to this unit not expressly approved by the part responsible for compliance could void the user's authority to operate the equipment