

User Manual

In-Wall WiFi Audio Amplifier

<http://www.ten-tronics.com>

Introduction :

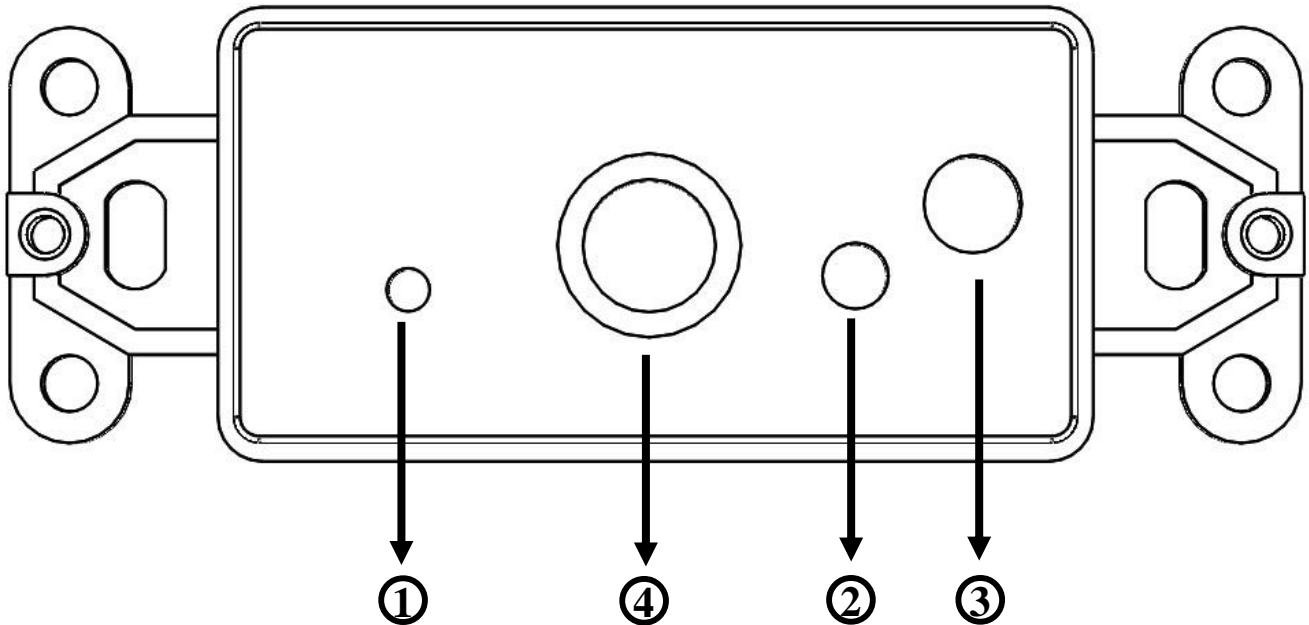
This wireless audio streamer is of great performance and especially designed to meet the high demand of the installation market. This system uses free iOS and Android applications to easily control the audio system. You can stream the same music to all zones or different music to different zones, no matter the music from call phone memory or online streaming services such as Spotify.

Content :



- In-Wall WiFi Audio Amplifier * 1
- Power Adaptor * 1(Option)

Interface and Function :



① WiFi STATUS :

- Blue light flashes slowly : System initialization.

- Blue light flashes quickly: WiFi connecting / Allow WiFi connection setting.

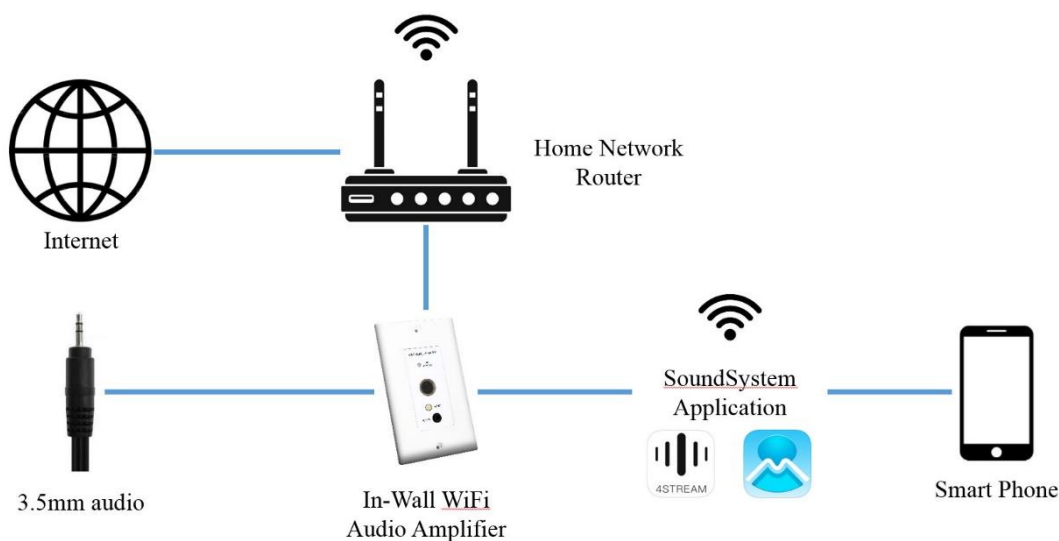
- Green light: WiFi connected.

② RESET : Use to reset the device when it has problem in WiFi connection.

③ AUX IN : 3.5mm Audio In.

④ IR Receiver

How it works :



Installation Guide :

1. Unpack

Verify all the accessories are included in the package.

2. Place

Fix the amplifier at a safe and proper location.

Note: The antenna should not be attached to metal and kept away from metal materials.

3. Connect

-Power connection

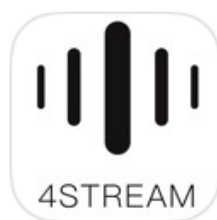
Power the amplifier with the power adaptor included in the accessories.

-Audio connection

Use the terminal provided by the product to connect speakers.

4. Download the APP

Download the application (4STREAM or MUZO Player) from the App Store for iOS and Google Play for Android.



4STREAM



MUZO Player

5. Configure :

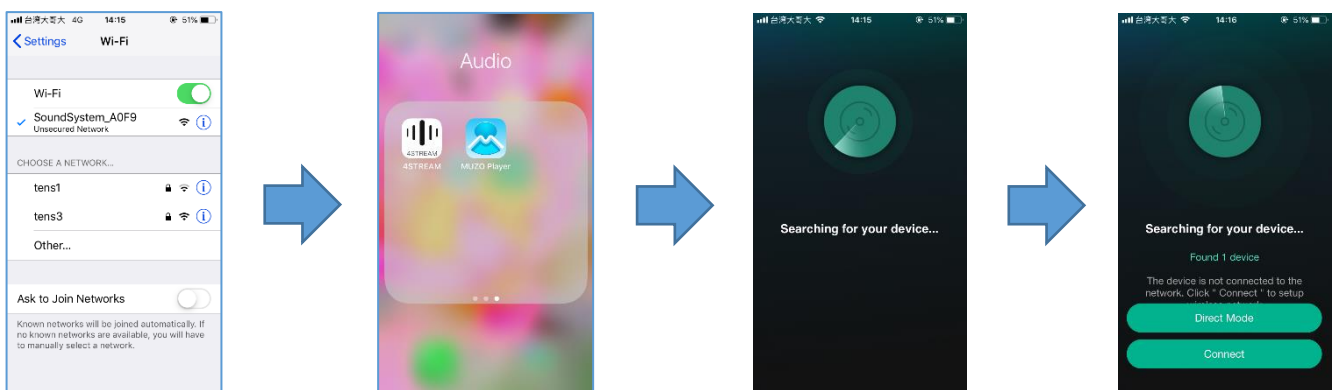
I. Connect your mobile device to your network.

II. Power the device.

III. After waiting for the blue light of the device to flash slowly, choose the hotspot (SoundSystem_XXXX) in the WiFi setting on your cell phone and connect.

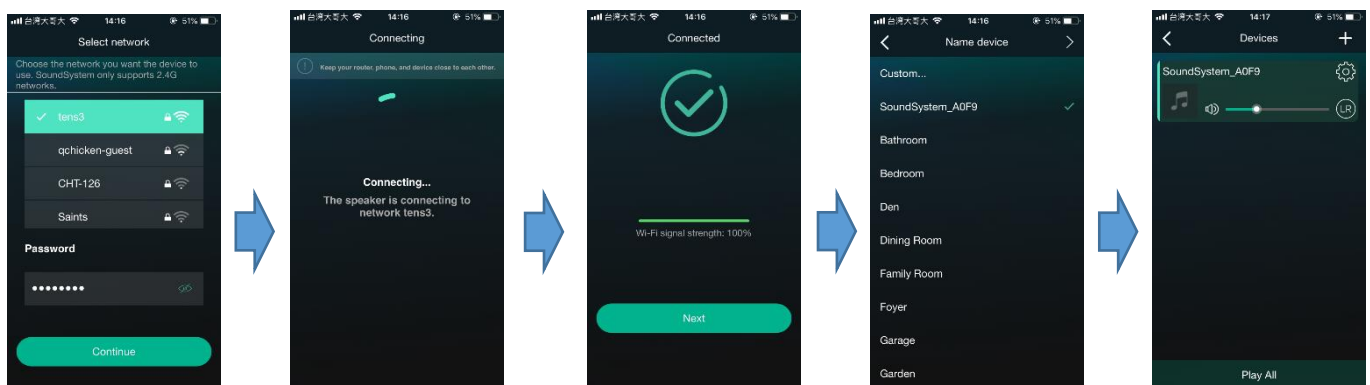
IV. Open the application (4STREAM or MUZO Player).

V. Application will search for the device. After the device is found, click the connect button in the app.



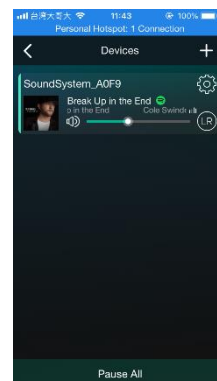
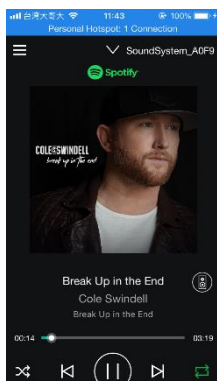
VI. Choose the network you want the device to use (**Only supports 2.4G networks**), click continue.

VII. Wait for the device to be configured.



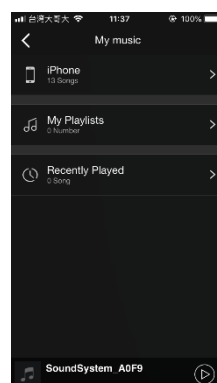
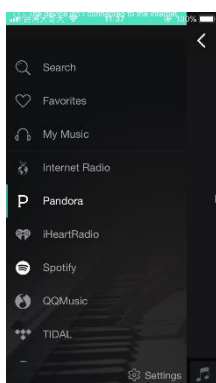
Application Playback :

Your device list will show all available zones. Press a zone to see the information on the current source. While on the view for the source, swipe right to reveal the available sources. From there, you can select what source you want to hear next, or swipe left to return to the currently playing source.



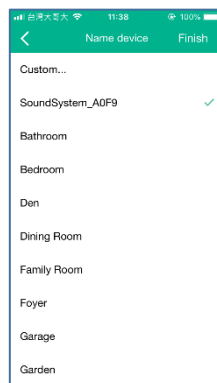
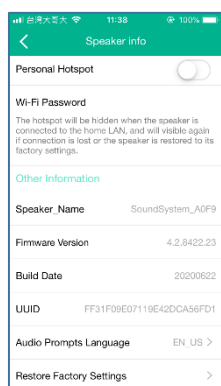
Streaming from cell phone memory/online Music Services :

These screens let you access your available music.



Device Settings :

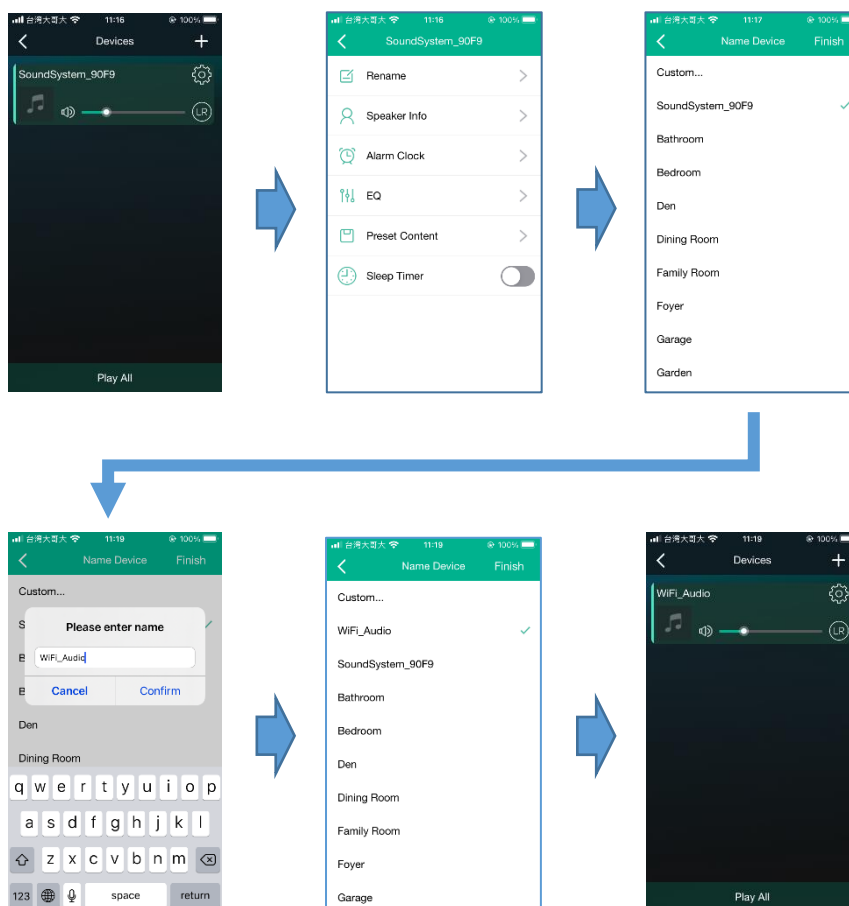
Through device settings you can get technical information on your speaker, or rename it.
(Note - Speaker info can confirm the firmware version.)



-Rename

1. Click “Gear” icon.
2. Click “Rename”.
3. Click “Custom...”.
4. Enter new name of the device and Click “Confirm”.
5. Click “Finish”, Complete the Rename.

(Note - If there is an updated name and then initialize the device, the SSID will be changed to the last custom name plus the serial number of the product.)

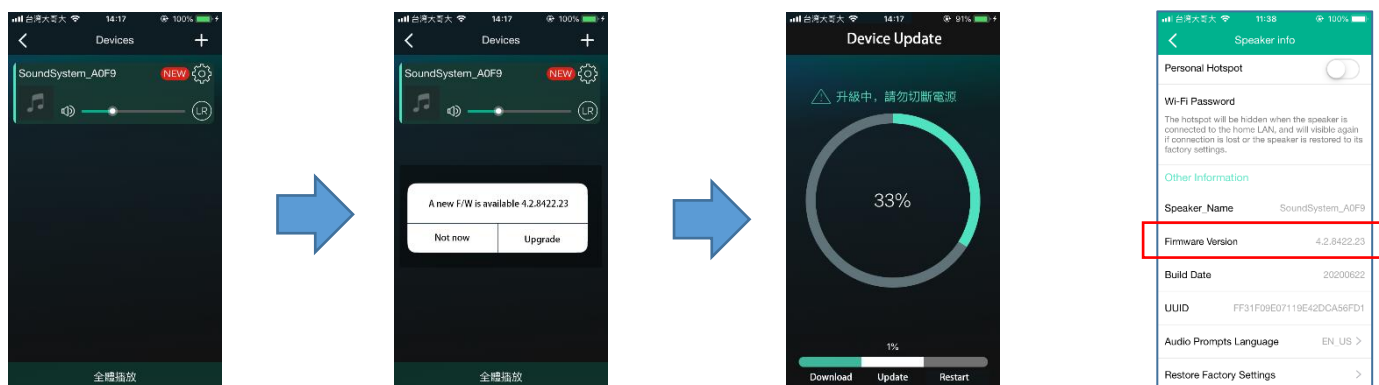


Firmware update :

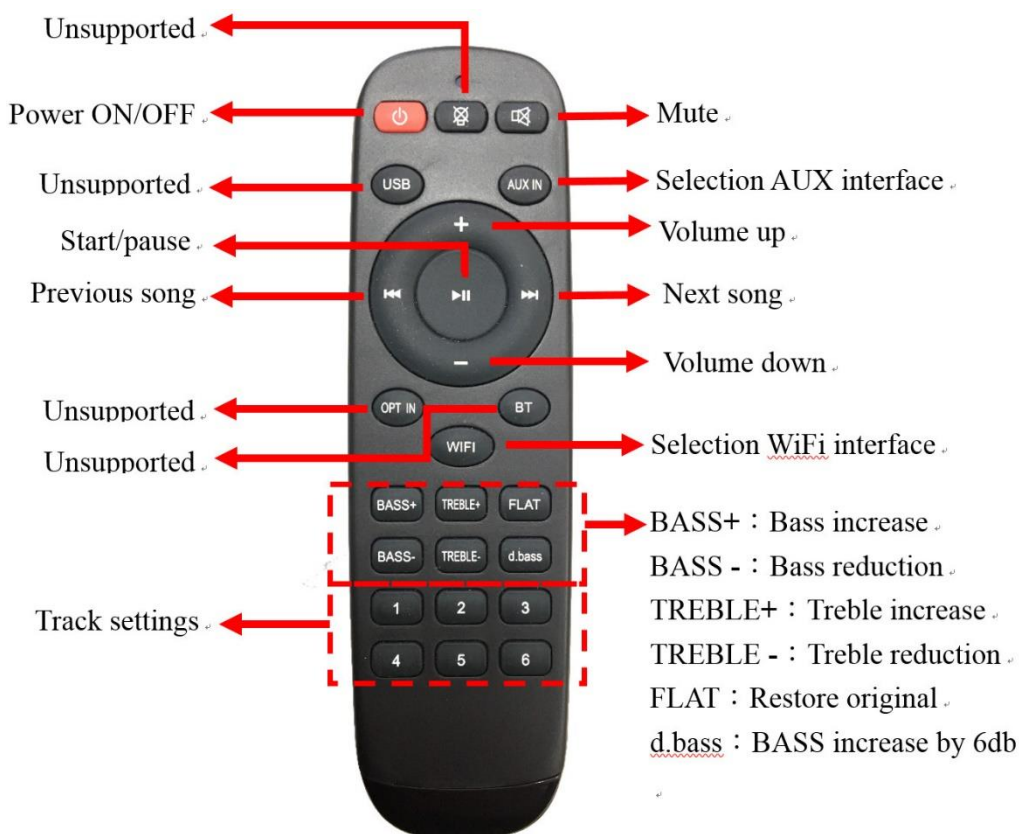
Device will notify in your application when there is a new firmware version available. It's recommended to update firmware whenever available as this might not only correct bugs improve security.

-Update process

6. Click "NEW" icon.
7. Click "Upgrade".
8. Don't turn off the power, the device will update automatically.
(Note - Speaker info can confirm the firmware version.)



Remote Controller :



Federal Communications Commission (FCC) Statement

You are cautioned that changes or modifications not expressly approved by the part responsible for compliance could void the user's authority to operate the equipment.

This device complies with Part 15 of the FCC Rules. Operation is subject to the following two conditions:

- 1) this device may not cause harmful interference, and
- 2) this device must accept any interference received, including interference that may cause undesired operation of the device.

This equipment has been tested and found to comply with the limits for a Class B digital device, pursuant to part 15 of the FCC rules. These limits are designed to provide reasonable protection against harmful interference in a residential installation. This equipment generates, uses and can radiate radio frequency energy and, if not installed and used in accordance with the instructions, may cause harmful interference to radio communications. However, there is no guarantee that interference will not occur in a particular installation. If this equipment does cause harmful interference to radio or television reception, which can be determined by turning the equipment off and on, the user is encouraged to try to correct the interference by one or more of the following measures:

- Reorient or relocate the receiving antenna.
- Increase the separation between the equipment and receiver.
- Connect the equipment into an outlet on a circuit different from that to which the receiver is connected.
- Consult the dealer or an experienced radio/TV technician for help.

FCC RF Radiation Exposure Statement:

This equipment complies with FCC radiation exposure limits set forth for an uncontrolled environment. This equipment should be installed and operated with minimum distance 20cm between the radiator & your body. This transmitter must not be co-located or operating in conjunction with any other antenna or transmitter.