

---

# S409

Unibody Fever & Mask Screening Solution : S409

## User's Manual

Version 1.0



2021.2



---

---

This page is intentionally left blank.

---

## Revision History

Version	Release Time	Description
1.0	July 2020	Initial release

---

## **Copyright**

Copyright © 2021 ARBOR Technology Corp.. All Rights Reserved.

This document contains proprietary information protected by copyright. No part of this manual may be reproduced by any mechanical, electronic, or other means in any form without prior written permission of the manufacturer.

## **Disclaimer**

The information in this document is subject to change without prior notice in order to improve the reliability, design and function. It does not represent a commitment on the part of the manufacturer.

Under no circumstances will the manufacturer be liable for any direct, indirect, special, incidental, or consequential damages arising from the use or inability to use the product or documentation, even if advised of the possibility of such damages.

## **About This Manual**

This user's manual provides the general information and installation instructions for the product. The manual is meant for the experienced users and integrators with hardware knowledge of personal computers. If you are not sure about any description in this manual, consult your vendor before further handling.


## Declaration of Conformity

### CE

Hereby, ARBOR Technology Corp., declares that this Unibody Fever & Mask Screening Solution : S409/ S409, is in compliance with the essential Requirements and other relevant provisions of Radio Equipment Directive 2014/53/EU.

**Restriction of 5GHz pictogram and country table**

This production is restricted indoor use only for 5150-5250MHz



AT	BE	BG	CH	CY	CZ	DE	DK	EE	EL	ES
FI	FR	HR	HU	IE	IS	IT	LI	LT	LU	LV
MT	NL	NO	PL	PT	RO	SE	SI	SK	TR	UK

CE

### contact person

ARBOR Technology Corp.  
 10F., No.700, Zhongzheng Rd., Zhonghe Dist., New Taipei City 235, Taiwan  
 Tel: +886 282269396  
 Email: sales@arbor.com.tw

Manufacturer Name:	ARBOR Technology Corp.
Manufacturer Address:	10F., No.700, Zhongzheng Rd., Zhonghe Dist., New Taipei City 235, Taiwan
Operation Frequency:	Bluetooth: 2402-2480MHz

The RF frequencies can be used in Europe without restriction.

This product is intended for sale and application in a business environment.

**FCC Warning:**

This device complies with Part 15 of FCC Regulations. Operation is subject to the following two conditions:

1. This device may not cause harmful interference, and
2. This device must accept any interference received, including interference that may cause undesired operation.

Any changes or modifications not expressly approved by the guarantee of this device could void the user's authority to operate the device.

This equipment has been tested and found to comply with the limits for a Class B digital device, pursuant to part 15 of FCC Regulations. These limits are designed to provide reasonable protection against harmful interference in a residential installation. This equipment generates and can radiate radio frequency energy and, if not installed and used in accordance with the instructions, may cause harmful interference to radio communications. However, there is no guarantee that interference will not occur in a particular installation. If this equipment does cause harmful interference to radio or television reception, which can be determined by turning the equipment off and on, the user is encouraged to try to correct the interference by one or more of the following measures:

- Reorient or relocate the receiving antenna.
- Increase the separation between the equipment and receiver.
- Connect the equipment into an outlet on a different circuit from that to which the receiver is connected.
- Consult the dealer or an experienced radio/TV technician for help.

The equipment complies with FCC RF exposure limits set forth for an uncontrolled environment.

The equipment must not be co-located or operating in conjunction with any other antenna or transmitter.



**IC Warning:**

This device complies with Industry Canada license-exempt RSS standard(s).

Operation is subject to the following two conditions: (1) this device may not cause interference,

and (2) this device must accept any interference, including interference that may cause undesired operation of the device.

Le present appareil est conforme aux CNR d'Industrie Canada applicables aux appareils radio

exempts de licence. L'exploitation est autorisee aux deux conditions suivantes : (1) l'appareil ne

doit pas produire de brouillage, et (2) l'utilisateur de l'appareil doit accepter tout brouillage

radioelectrique subi, meme si le brouillage est susceptible d'en compromettre le fonctionnement.

## **RoHS**

ARBOR Technology Corp.. certifies that all components in its products are in compliance and conform to the European Union's Restriction of Use of Hazardous Substances in Electrical and Electronic Device (RoHS) Directive 2015/863/EU

## **SVHC / REACH**

To minimize the environmental impact and take more responsibility for the earth on which we live, ARBOR Technology Corp.. hereby confirms all products comply with the restriction of SVHC (Substances of Very High Concern) in (EC) 1907/2006 (REACH--Registration, Evaluation, Authorization, and Restriction of Chemicals) regulated by the European Union.

All substances listed in SVHC < 0.1 % by weight (1000 ppm).

## Important Safety Instructions

Read these safety instructions carefully:

1. Read all cautions and warnings on the device.
2. Dropping the device or letting it fall may cause damage.
3. Make sure the correct voltage is connected to the device.
4. For pluggable device, the socket outlet should be near the device and should be easily accessible.
5. Do not scratch or rub the screen with a hard object.
6. Never use any of the solvents, such as Thinner Spray-type cleaner, Wax, Benzene, Abrasive cleaner, Acid or Alkaline solvent, on the display. Harsh chemicals may cause damage to the case and the touch sensor.
7. Remove dirt with a lightly moistened cloth and a mild solvent detergent. Then wipe the case with a soft dry cloth.
8. If the device will not be used for a long time, disconnect it from the power source to avoid damage by transient overvoltage.
9. Never pour any liquid into the device openings. This may cause electrical shock.
10. Never open the device. For safety reasons, the device should be opened only by qualified service personnel.
11. If one of the following situations arises, get the device checked by service personnel:
  - a. The power cord or plug is damaged.
  - b. Liquid has penetrated into the device.
  - c. The device does not work well, or you cannot get it to work according to the User's manual.
  - d. The device has been damaged.
  - e. The device has obvious signs of breakage.
12. Keep this User's Manual for later reference.
13. Do not leave this device in an uncontrolled environment where the storage temperature is below -20°C or above 65°C. This may damage the device.



Do not use a power adapter that isn't made for the device. Supplying the device with inappropriate voltage may cause harm to the battery or, even worse, burn the device.

To prevent possible hearing damage, do not listen at high volume levels for long periods.

## General Cleaning Tips

You may need the following precautions before you begin to clean the device. When you clean any single part or component for the device, please thoroughly read and understand the details below.

1. We strongly recommended that you power the device off before you start to clean.
2. When you need to clean the device, please rub it with a piece of dry cloth.
3. Never get the circuit board damp or wet.
4. Be cautious of all kinds of cleaning solvents or chemicals when you use it for the sake of cleaning. Some individuals may be allergic to the ingredients.
5. Try not to put any food, drinks or cigarettes on or near the device.

## Cleaning Tools

Although many companies have created products to help improve the process of cleaning your devices and peripherals, users can also use household items to clean their devices and peripherals. Below is a listing of items you may need or want to use while cleaning your devices or peripherals. Keep in mind that some components in your device may only be cleaned using a product designed for cleaning that component. If this is the case it will be mentioned in the cleaning.

- **Cloth:** A piece of soft, nonabrasive cloth is the best tool to use when rubbing a component. Although paper towels or tissues can be used on most hardware as well, we still recommend you to rub it with a piece of cloth.
- **Water or rubbing alcohol:** You may moisten a piece of cloth a bit with some water or rubbing alcohol and rub it on the device. Unknown solvents may be harmful to the plastic parts.
- **Cotton swabs:** Cotton swabs moistened with rubbing alcohol or water are excellent tools for wiping hard to reach areas but care must be taken to avoid introducing liquids into any device openings.
- **Foam swabs:** Whenever possible, it is better to use lint-free swabs such as foam swabs.

## Recommended Cleaning Procedures

1. Close all application programs
2. Close operating software
3. Turn off the device
4. Remove all peripherals
5. Disconnect the power cable
6. Proceed to clean.

## Disposing of the Device

- **Within the European Union**



EU-wide legislation, as implemented in each Member State, requires that waste electrical and electronic products carrying the mark (left) must be disposed of separately from normal household waste.

This includes monitors and electrical accessories, such as signal cables or power cords. When you need to dispose of your display products, please follow the guidance of your local authority, or ask the shop where you purchased the product, or if applicable, follow any agreements made between yourself. The mark on electrical and electronic products only applies to the current European Union Member States.

- **Outside the European Union**

If you wish to dispose of used electrical and electronic products outside the European Union, please contact your local authority in order to comply with the correct disposal method.

## Warranty

This product is warranted to be in good working order during the warranty period. Should this product fail to be in good working order at any time during this period, we will, at our option, replace or repair it at no additional charge except as set forth in the following terms. This warranty does not apply to products damaged by misuse, modifications, accident or disaster.

Vendor assumes no liability for any damages, lost profits, lost savings or any other incidental or consequential damage resulting from the use, misuse of, or inability to use this product. Vendor will not be liable for any claim made by any other related party.

Vendor disclaims all other warranties, either expressed or implied, including but not limited to implied warranties of merchantability and fitness for a particular purpose, with respect to the hardware, the accompanying product's manual(s) and written materials, and any accompanying hardware. This limited warranty gives you specific legal rights.

Return authorization must be obtained from the vendor before returned merchandise will be accepted. Authorization can be obtained by calling or faxing the vendor and requesting a Return Merchandise Authorization (RMA) number. Returned goods should always be accompanied by a clear problem description.

---

This page is intentionally left blank.



---

# Chapter 1

## Introduction

## 1.1 Specifications

Model	S409
CPU	MT8768
OS	Android 9.0
ROM (eMMC)	32GB
RAM	3GB DDR3
Connectivity	BT5.0(BLE), USB2.0
Display	5.0" inch HD 1280x720 TFT
Brightness	400 +/-20 nits
Camera module (with thermal)	(FF) 一直亮 (pixel 4M)+ lepton2.5 80x60
Black body	均温區域2x2cm
LED	3 color LED x3 , for 電源/4Gwifi/ Camera 狀況顯示.
Drop	1.2M TBC
Key	Power Key, 長按5" reset
Dimension (mm)	12cm 黑體爐位置, 154x195.8x132.3mm
Weight(g)	aournd 1Kg
Operation temp.	-10°C ~55°C
Storage temp.	-20°C ~65°C

---

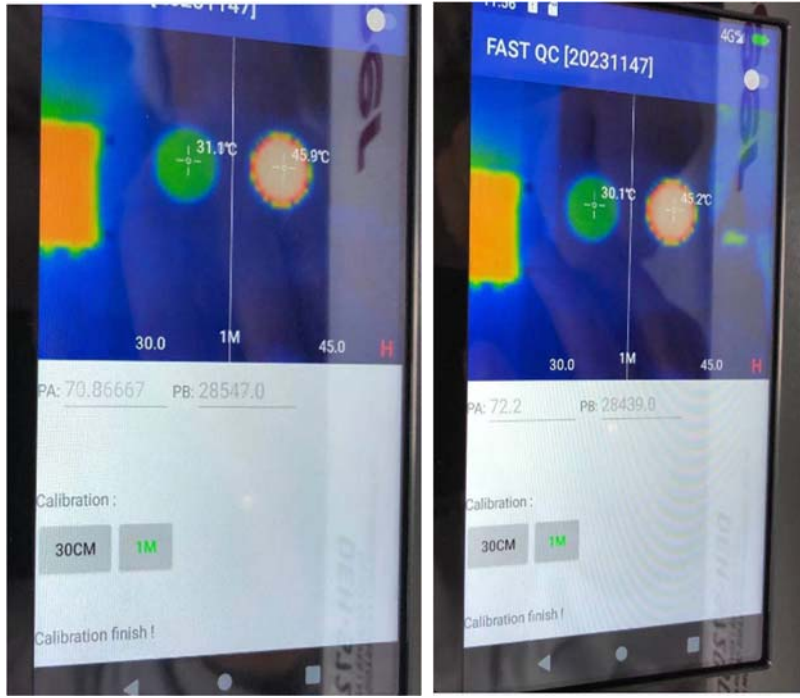
This page is intentionally left blank.

---

# Chapter 2

## Getting Started

## 1. Calibration



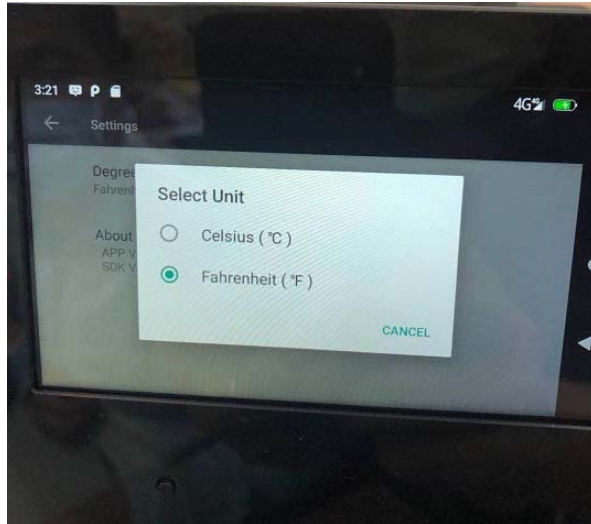
before calibration

After calibration

## 2. UI



### 3. Select the unit



Auto detect the location of Forehead and it's temp

