

## 4G RCM Internal & External Photographs

### Front of Device



**External Side View (1)**



## External Side View (2)

Note: The markings are not representative of the final build. Refer to the Product Label Design document for the intended labelling.



**Back of Device**



## RCM Configuration with accessories

Left: USB Cable

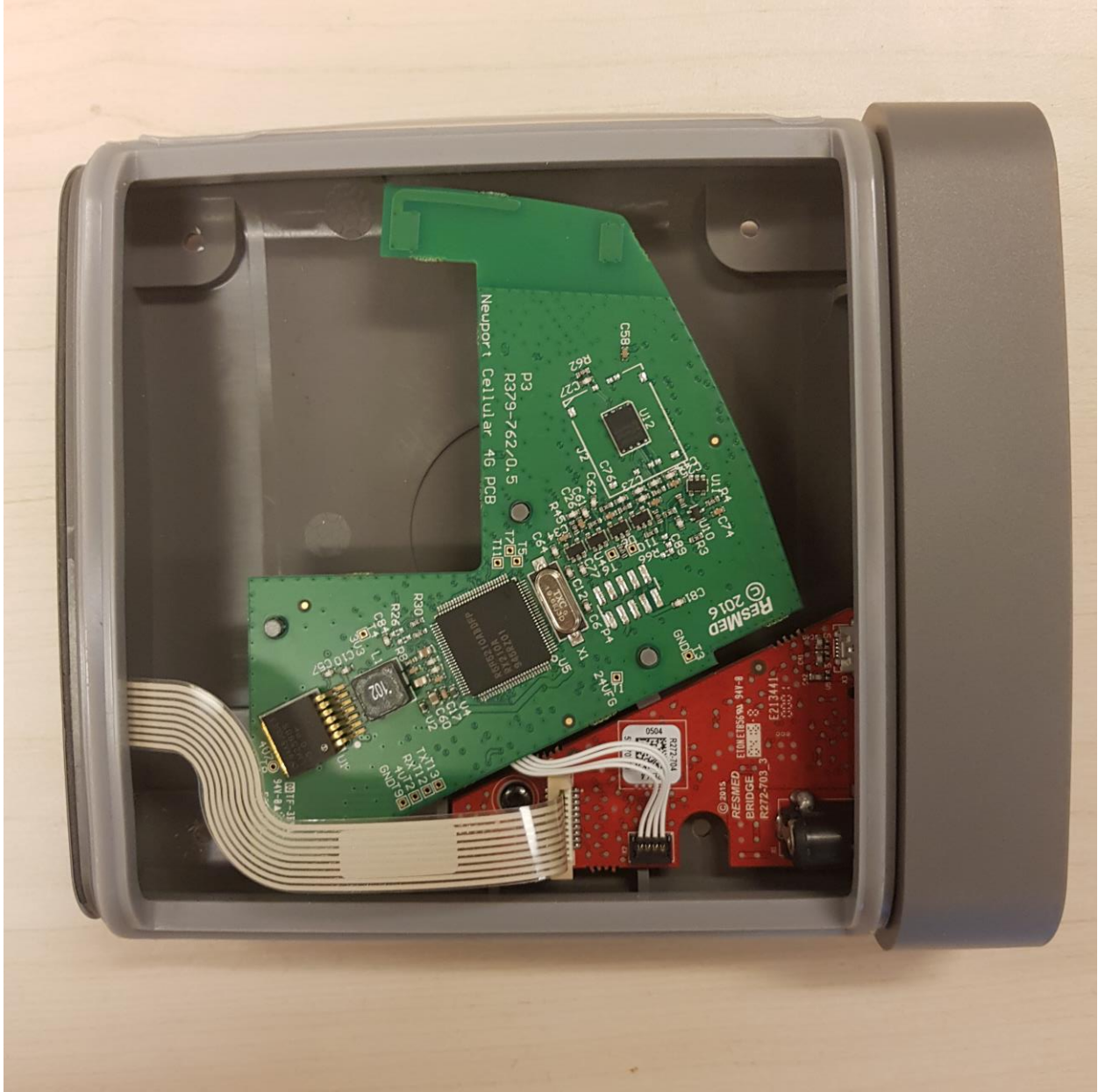
Right: 30W AC Adaptor



**Internal View (Side Panel removed)**



**Internal View**



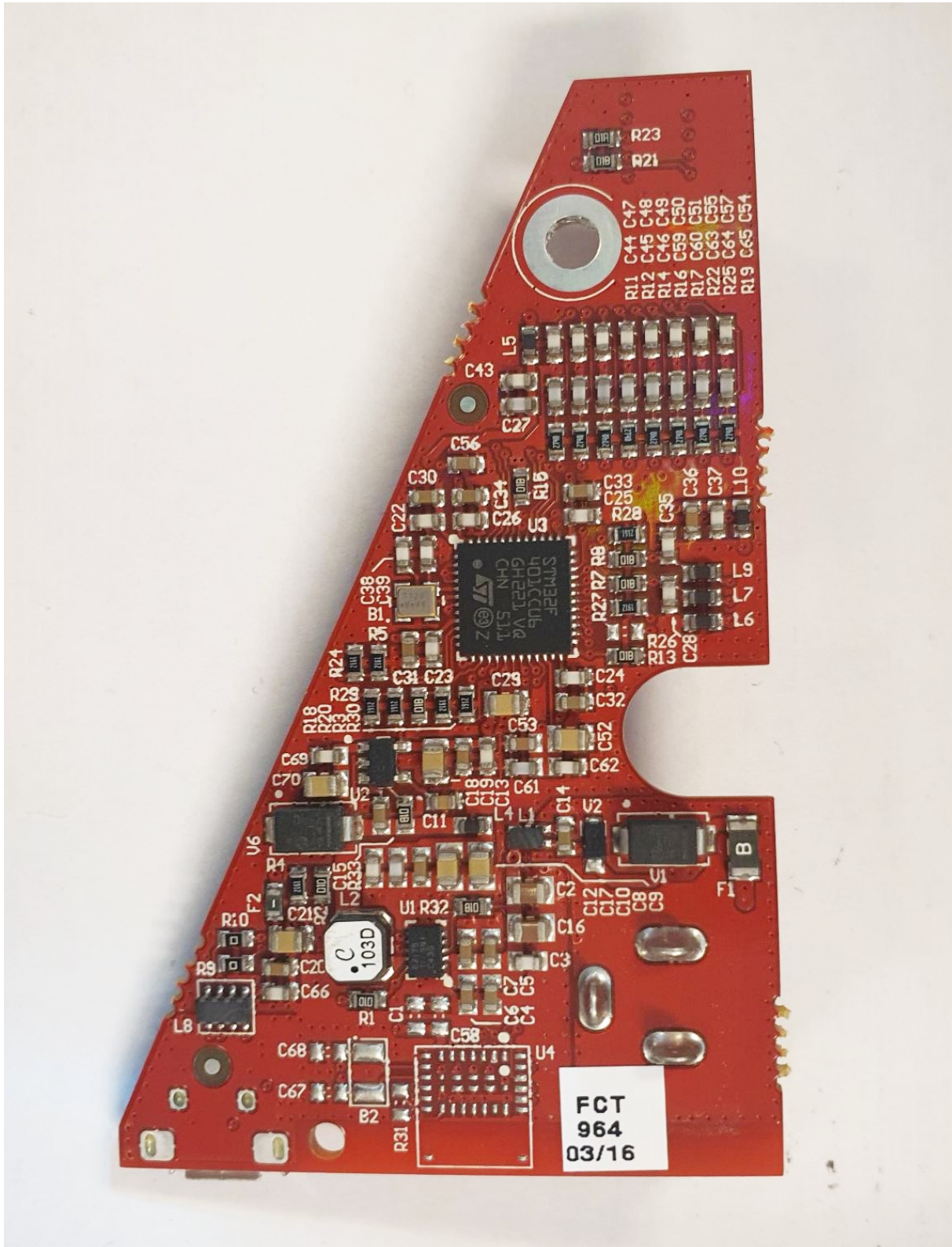
Internal View : Cellular PCBA







**Internal View : Bridge PCBA**



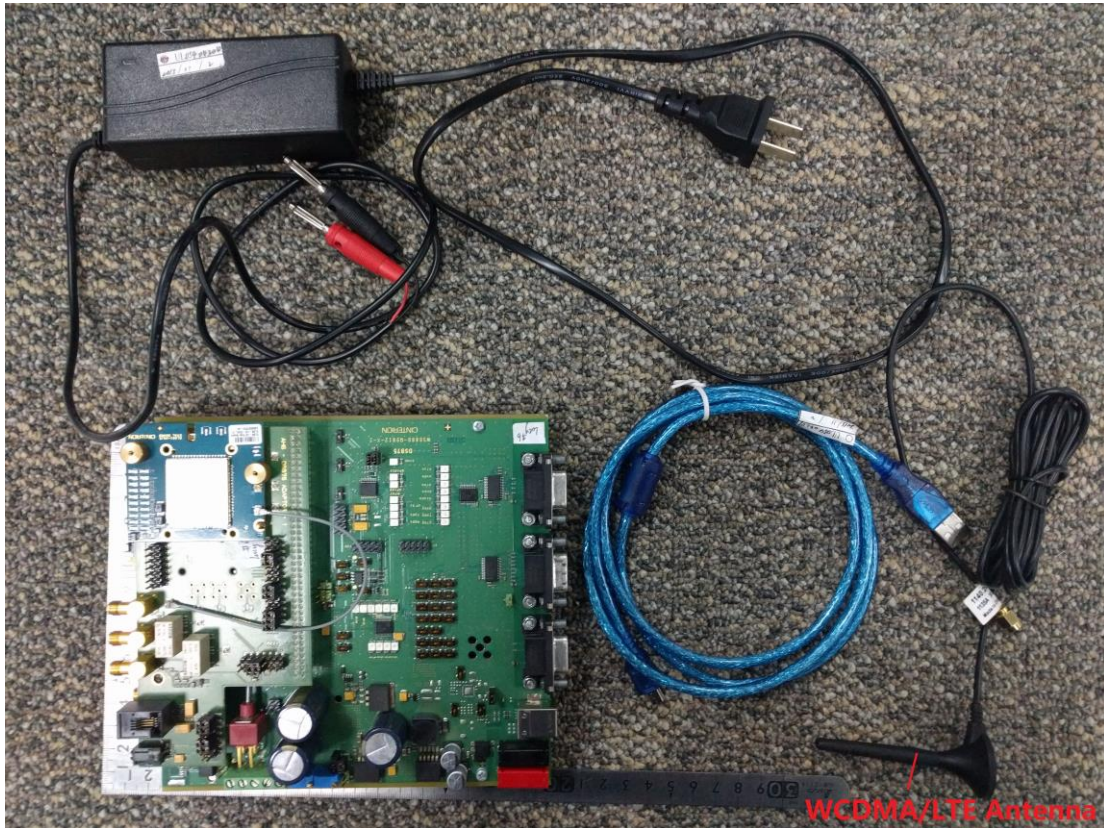


**Internal View : Bridge PCBA**

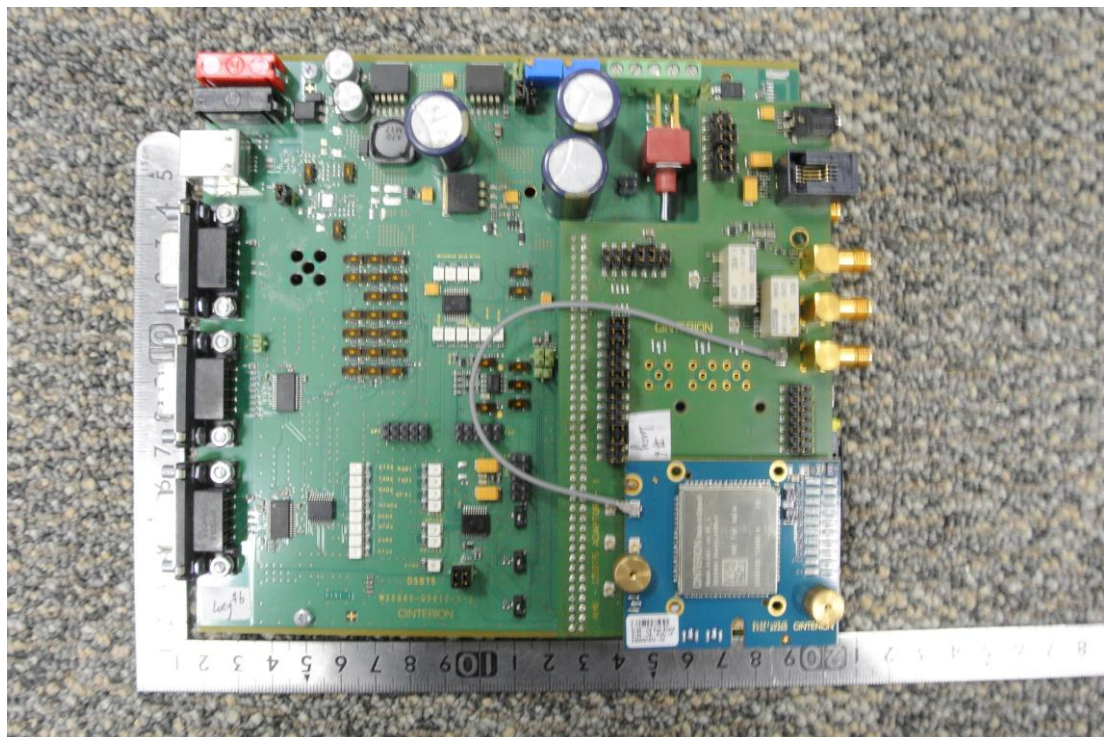


## EUT EXTERNAL PHOTOS

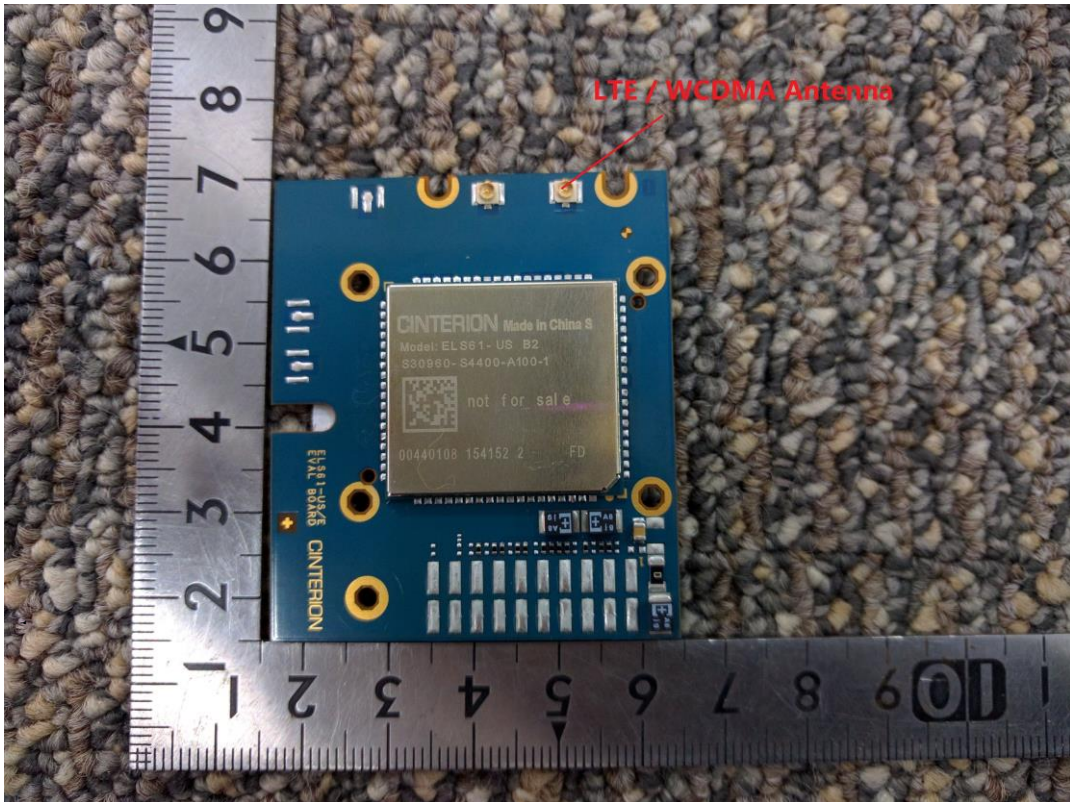
View of EUT-1



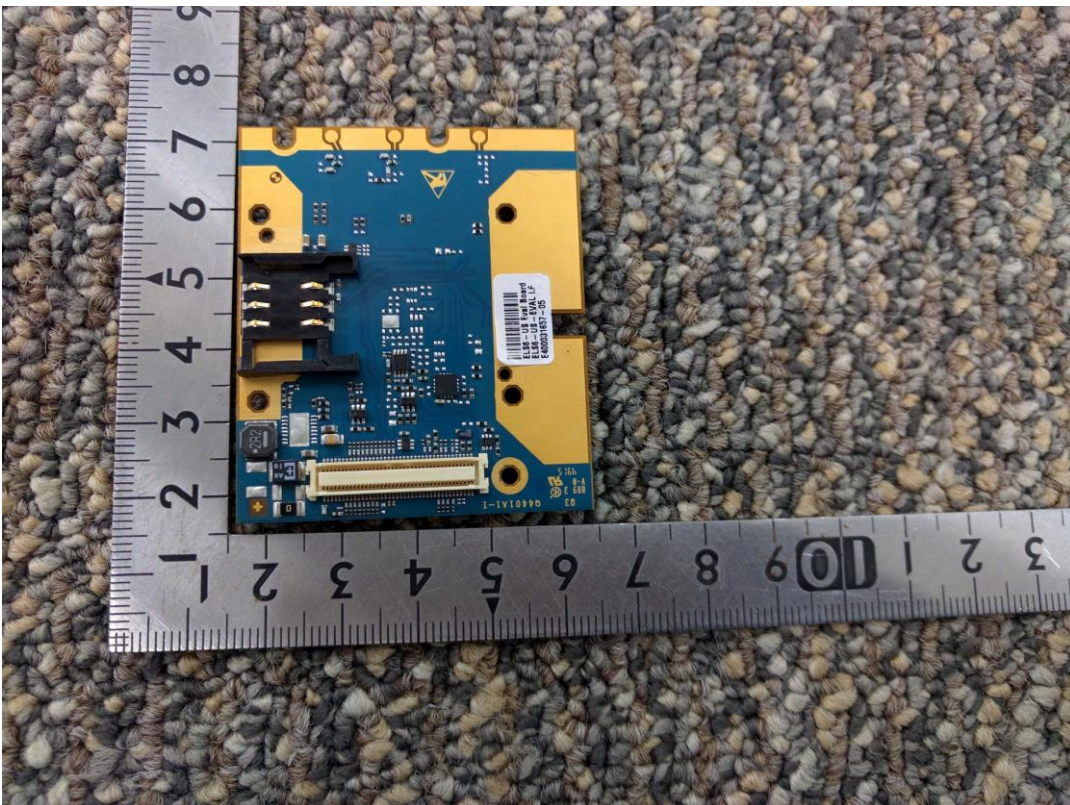
View of EUT-2



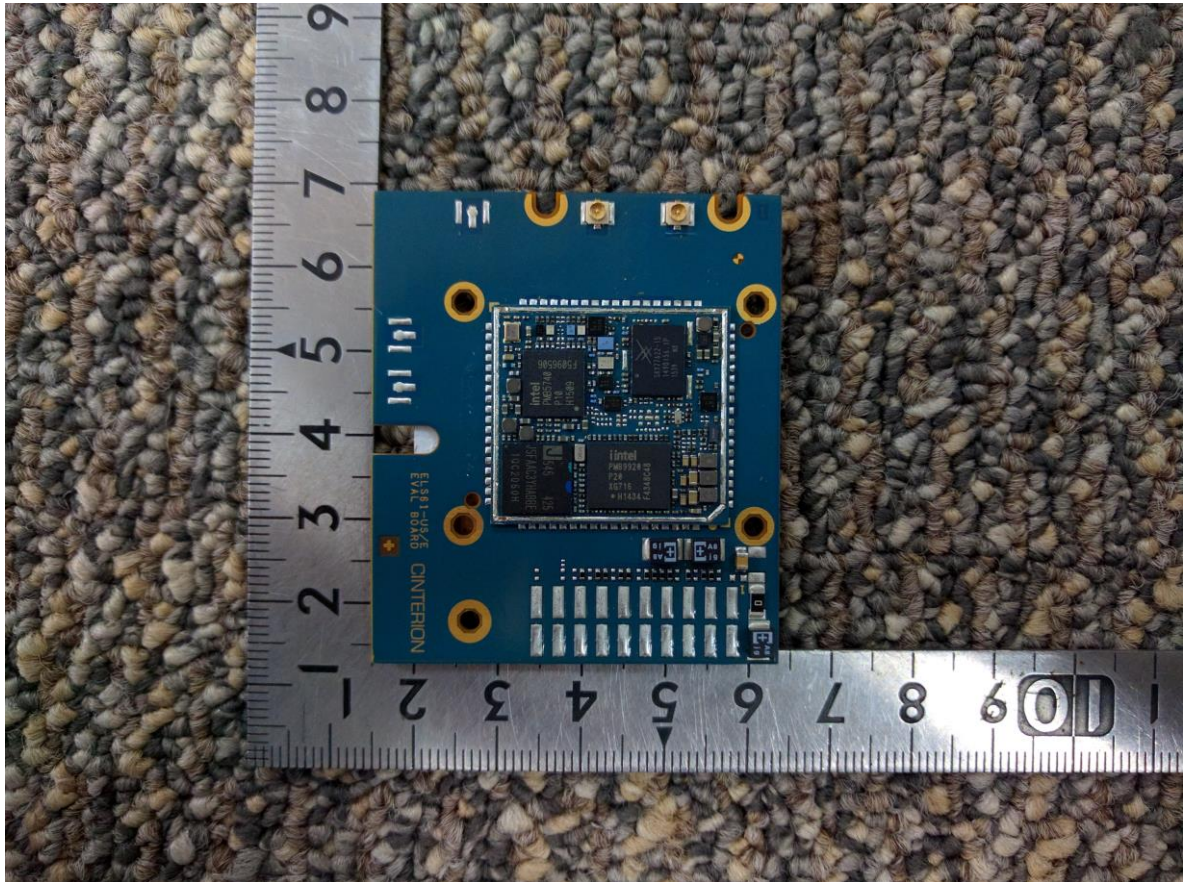
View of EUT-3



View of EUT-4

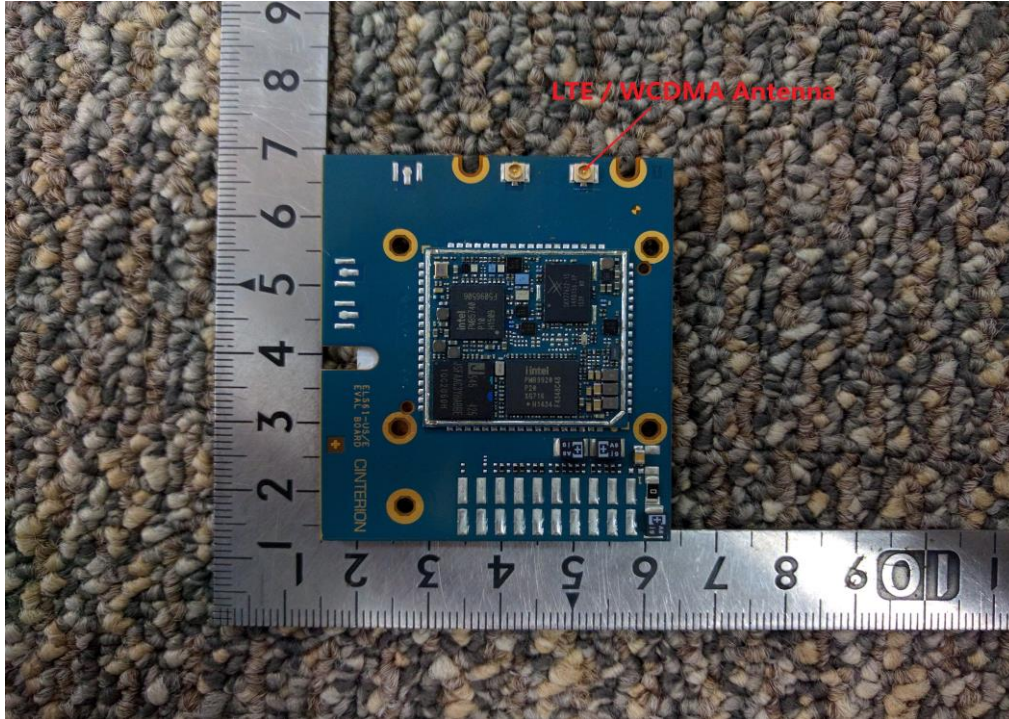


View of EUT-5



## EUT INTERNAL PHOTOS

View of EUT-1



View of EUT-2

