

Figure 1 CPU side of FG Main PCBA R370-7326

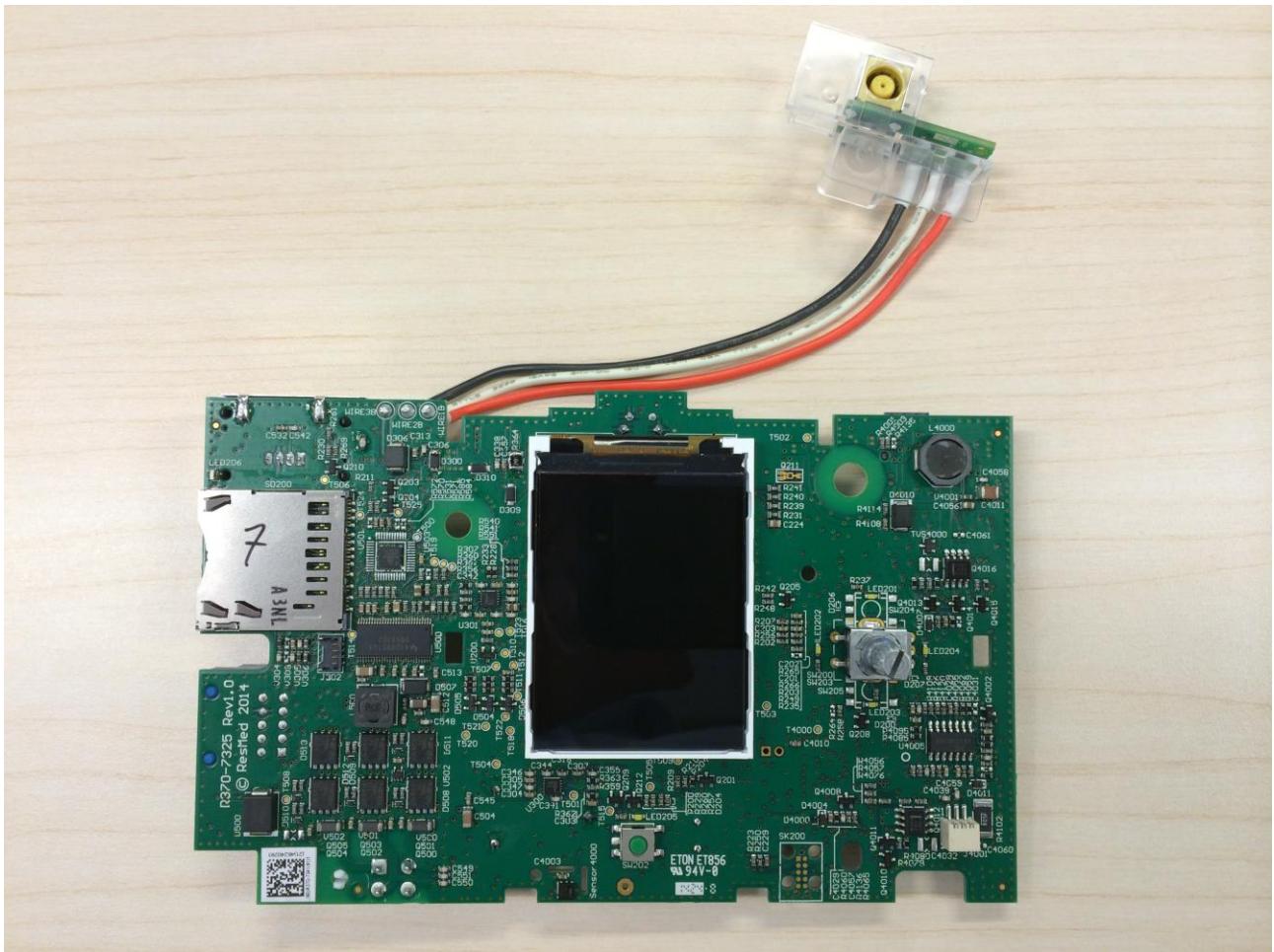


Figure 2 Display side of FG Main PCBA R370-7326

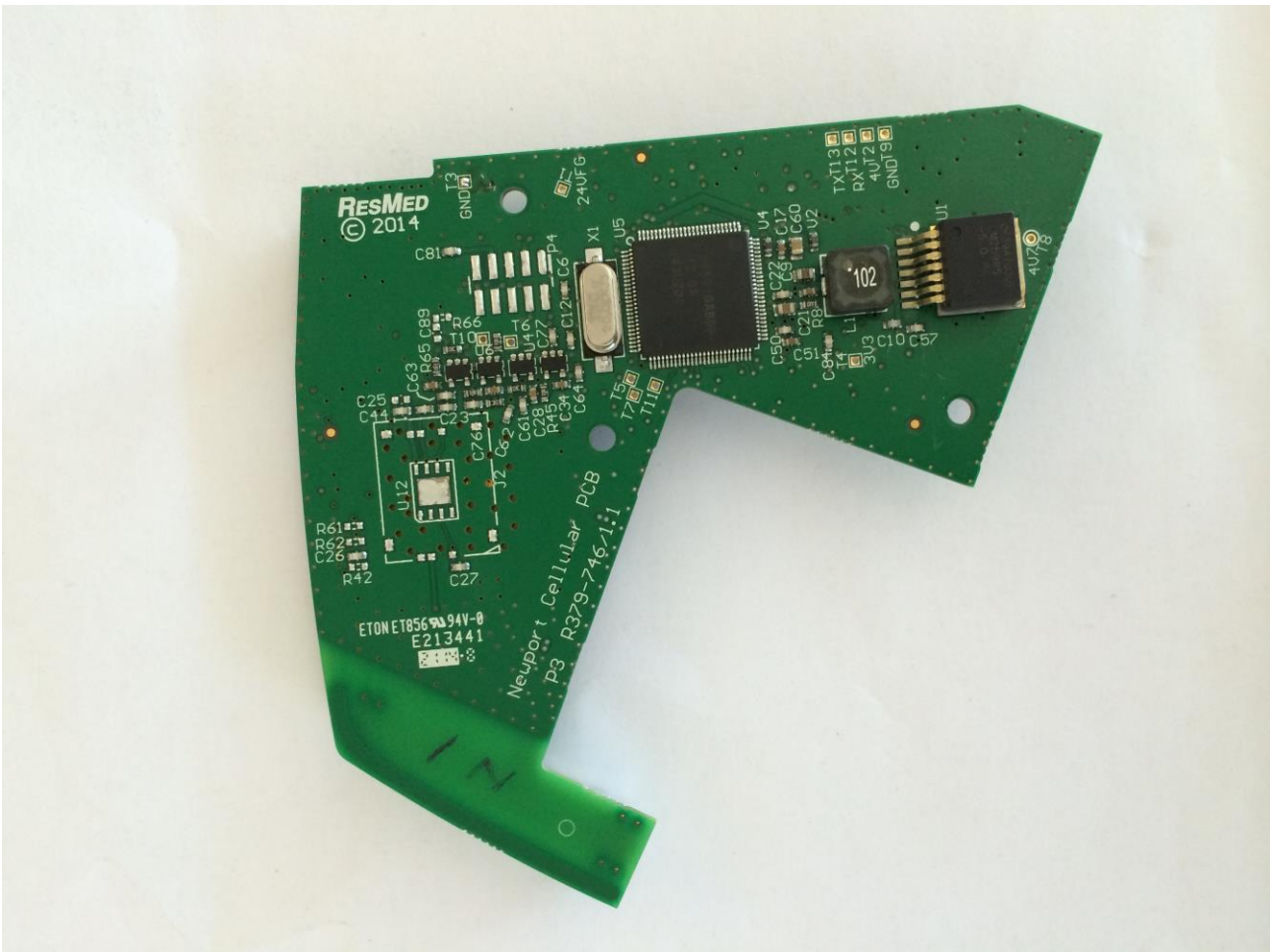


Figure 3 CPU side of CAM PCBA R379-748



Figure 4 Cellular module and antenna side of CAM PCBA R379-748

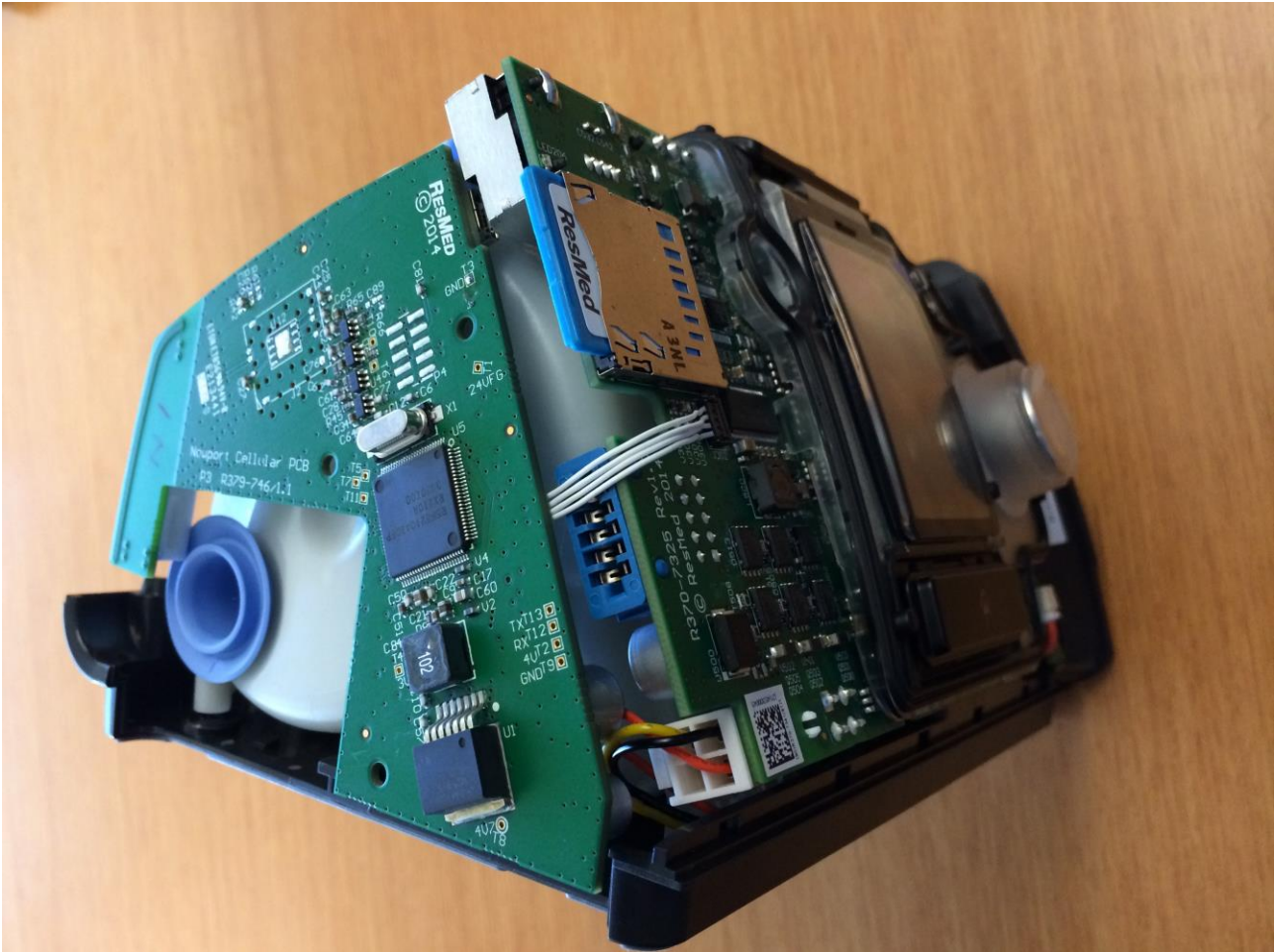


Figure 5 CPAP with covers removed, showing CAM PCBA. Note that CAM PCBA is affixed to end over in assembled unit.



Figure 6 CPAP with covers removed, showing FG main PCBA