

Bestway®



OWNER'S MANUAL

bestwaycorp.com/support

Visit Bestway YouTube channel 



WARNING IMPORTANT SAFETY INSTRUCTIONS

FCC ID: 2ACGN-BW58614

When installing and using this electrical equipment, basic safety precautions should always be followed, including the following:

READ AND FOLLOW ALL INSTRUCTIONS

WARNING - RISK OF ELECTRIC SHOCK -The pump cannot be using while people are inside the pool.

WARNING - TO REDUCE THE RISK OF INJURY, do not permit children to use this product unless they are closely supervised at all times.

WARNING - RISK OF ELECTRIC SHOCK. Connect only to a grounding type receptacle. This product is provided with a ground-fault circuit-interrupter. If replacement of the plug is needed, use only identical replacement parts.

WARNING: The unit is provided with a ground-fault circuit-interrupter (**GFCI**). To test the **GFCI**, push the test button. The **GFCI** should interrupt power. Push the reset button. Power should be restored. If the **GFCI** fails to operate in this manner, the **GFCI** is defective. If the **GFCI** interrupts power to the pump without the test button being pushed, a ground current is flowing, indicating the possibility of an electric shock. Do not use this pump. Disconnect the pump and have the problem corrected by a qualified service representative before using.

CAUTION - To reduce the risk of electric shock the pool must be installed no closer than 6 feet (1.8 m) from any electrical outlet. Do not place portable appliances closer than 5 feet (1.5 m) from the pool.

WARNING: The pump is not intended to be bonded to the equipotential bonding grid.

DO NOT BURY CORD. Locate cord to minimize abuse from lawn mowers, hedge trimmers, and other equipment.

WARNING - To reduce the risk of electric shock, replace damaged cord immediately. **If the supply cord is damaged, it must be replaced by the manufacturer, its service agent or similarly qualified persons in order to avoid a hazard.**

WARNING - To reduce the risk of electric shock, do not use extension cord to connect unit to electric supply; provide a properly located outlet.

CAUTION - This pump is for use with storable pools only. Do not use with permanently-installed pools. A storable pool is constructed so that it is capable of being readily disassembled for storage and reassembled to its original integrity. A permanently-installed pool is constructed in or on the ground or in a building such that it cannot be readily disassembled for storage.

CAUTION - For continued protection against possible electric shock this unit is to be mounted to the base in accordance with the installation instructions.

IMPORTANT - Using the pump with an unmatched electrical supply is dangerous and will result in catastrophic failure of pump.

RISK OF ELECTRIC SHOCK - When working with electricity, turn the electrical power off at the circuit breaker and lock breaker door. Failure to do so will result in increased risk of shock, injury and possibly death.

DO NOT REMOVE THE GROUNDING PRONG OR MODIFY THE PLUG IN ANY WAY. DO NOT USE ADAPTOR PLUGS. Consult a qualified electrician for any questions related to the validity of your plugs grounding. Handle the pump with care. Do not pull or carry the pump by the power cord. Never pull a plug from the outlet by yanking the power cord. Keep cord free from abrasions. Sharp objects, oil, moving parts, and heat should never be exposed to the filter pump.

NOTE: Please examine equipment before use. Notify Bestway at the customer service address listed on this manual for any manufacturing defect or missing parts at the time of purchase. Verify that the equipment components represent the filter pump model that you had intended to purchase.

NOTE: Place pump on a solid and level ground. Pay attention to position of pool and pump so adequate ventilation, drainage, and access for cleaning is available. Never place pump in an area that may accumulate water, or in an area where foot traffic will flow around the pool.

NOTE: Atmospheric conditions may affect the performance and life span of your filter pump. Unnecessary wear and tear may occur during periods of cold, heat and exposure to sun. Whenever possible shelter the pump from these conditions.

NOTE: Do not add chemicals in the filter pump.

NOTE: Assembly and disassembly of this product should only be performed by adults.

- THERMALLY PROTECTED MOTOR CSA ENCLOSURE 3
- FOR USE WITH SWIMMING POOLS ONLY.
- **CAUTION:** TO ENSURE CONTINUED PROTECTION AGAINST SHOCK HAZARD, USE ONLY IDENTICAL REPLACEMENT PARTS WHEN SERVICING.
- **WARNING:** RISK OF ELECTRIC SHOCK. CONNECT ONLY TO A GROUNDING TYPE RECEPTACLE.
- **CAUTION:** THIS PUMP IS FOR USE WITH STORABLE POOLS ONLY - DO NOT USE WITH PERMANENTLY-INSTALLED POOLS.
- **CAUTION:** CONNECT ONLY TO GROUNDING TYPE RECEPTACLE PROTECTED BY A CLASS A GROUND FAULT CIRCUIT INTERRUPTER.
- **CAUTION:** FOR CONTINUED PROTECTION AGAINST POSSIBLE ELECTRIC SHOCK THIS UNIT IS TO BE MOUNTED TO THE BASE IN ACCORDANCE WITH THE INSTALLATION INSTRUCTIONS.

• WARNING - RISK OF ELECTROCUTION

- 1) Connect Only To Properly Grounded Outlet. Do Not Remove Ground Pin
- 2) Inspect Cord Before Using – Do Not Use If Cord Is Damaged.
- 3) Keep Ground-Fault Circuit-Interrupter Dry And Off The Ground
- 4) Do Not Touch Plug With Wet Hands
- 5) Double Insulated – When Servicing Use Only Identical Replacement Parts.
- 6) Read Instruction Manual Before Using.

DO NOT REMOVE THIS TAG

SAVE THESE INSTRUCTIONS.

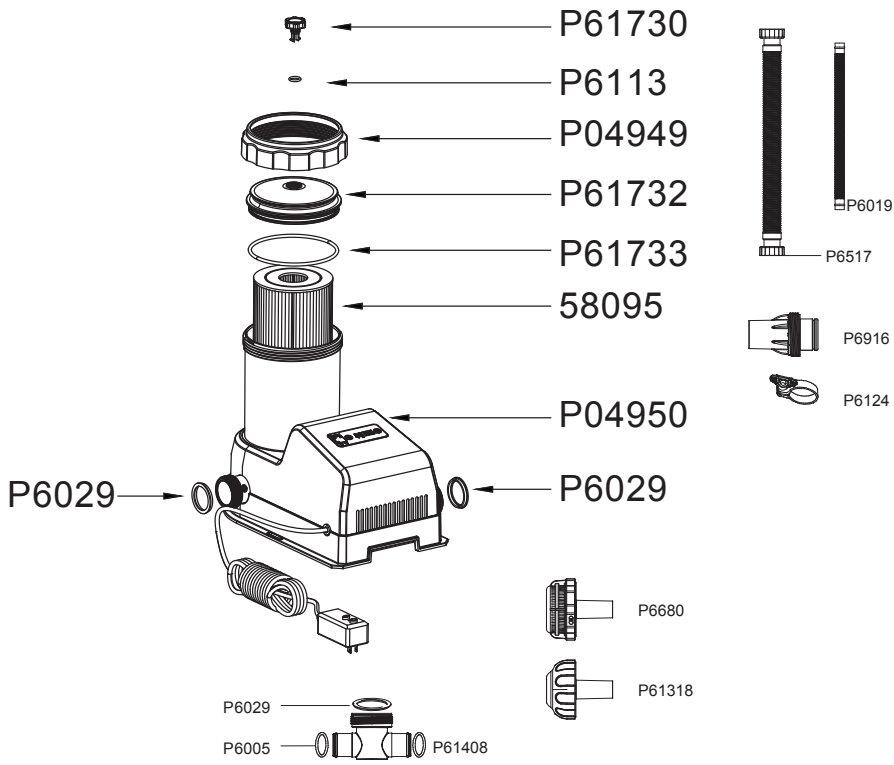
This device complies with part 15 of the FCC Rules. Operation is subject to the following two conditions: (1) This device may not cause harmful interference, and (2) this device must accept any interference received, including interference that may cause undesired operation.

WARNING: Any changes or modifications to this unit not expressly approved by the party responsible for compliance could void the user's authority to operate the equipment.

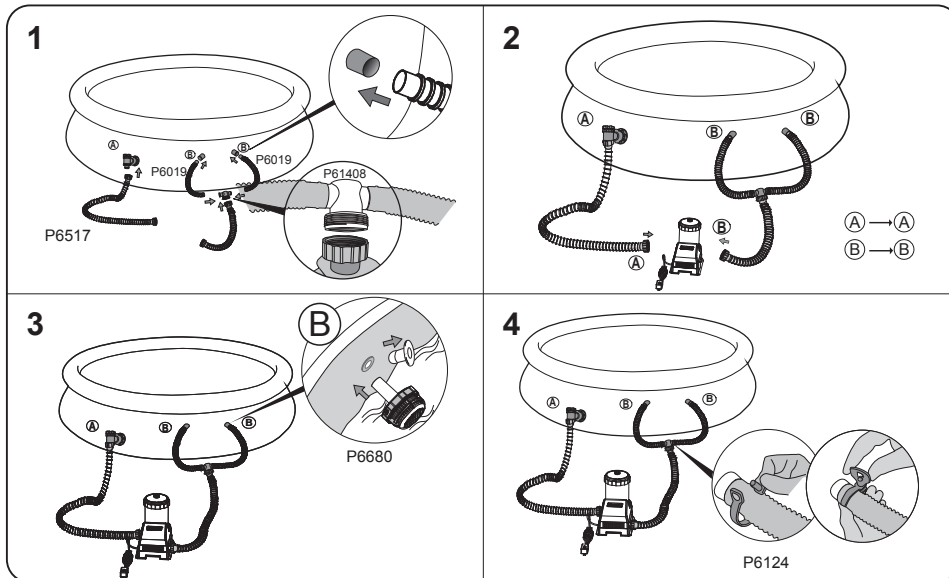
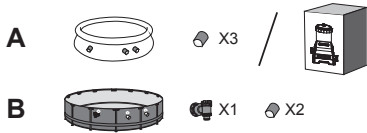
NOTE: This equipment has been tested and found to comply with the limits for a Class B digital device, pursuant to part 15 of the FCC Rules. These limits are designed to provide reasonable protection against harmful interference in a residential installation. This equipment generates, uses and can radiate radio frequency energy and, if not installed and used in accordance with the instructions, may cause harmful interference to radio communications. However, there is no guarantee that interference will not occur in a particular installation. If this equipment does cause harmful interference to radio or television reception, which can be determined by turning the equipment off and on, the user is encouraged to try to correct the interference by one or more of the following measures:

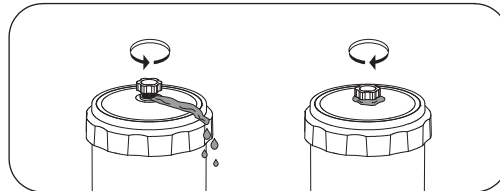
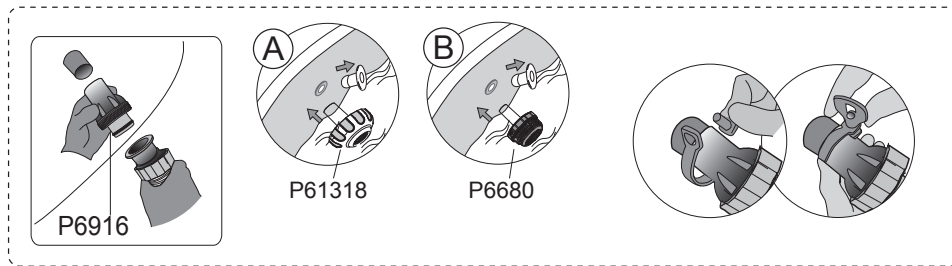
- Reorient or relocate the receiving antenna.
- Increase the separation between the equipment and receiver.
- Connect the equipment into an outlet on a circuit different from that to which the receiver is connected.
- Consult the dealer or an experienced radio/ TV technician for help.

To satisfy FCC RF exposure requirements, a separation distance of 20 cm or more should be maintained between the antenna of this device and persons during device operation. To ensure compliance, operations at closer than this distance is not recommended.



	A	B
P61730	1	1
P6113	1	1
P04949	1	1
P61732	1	1
P61733	1	1
58095	1	1
P04950	1	1
P6019	2	2
P6517	2	2
P6124	5	4
P6005	2	2
P6029	3	3
P6916	2	0
P61408	1	1
P6680	2	2
P61318	1	0

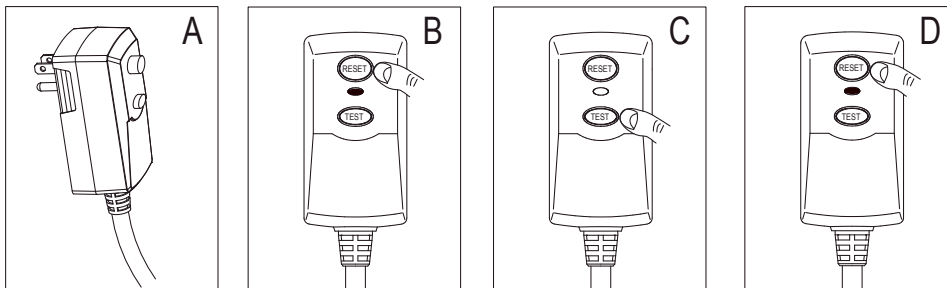




Operation

- 1) Open/unscrew the air purge valves on the filter pump; **air will be released as water fills the filter pump.**
- 2) **When water comes out of the air purge valves, close the air purge valves and wipe away any remaining water.**
- 3) Test the GFCI plug.
- 4) **Start the filter pump by pressing the switch button.**

GFCI test



A. To test the GFCI, plug it into a grounding type receptacle.

B. Press the "RESET" button; the indicator should turn red.

NOTE: If the indicator light is not on, the test has failed.

C. Press the "TEST" button. The indicator should turn off.

NOTE: If the indicator light is not off, the test has failed.

D. Press the "RESET" button. If the indicator light turns red, the filter pump is ready for use.

WARNING: RISK OF ELECTRIC SHOCK: THE GFCI MUST BE TESTED BEFORE EACH USE.


WARNING: DO NOT USE THE PUMP IF THE ABOVE TEST FAILS.

Please contact your local Bestway Customer Service.

NOTE: Never operate the pump while the connection valves are closed.

NOTE: To prevent the risk of electrical shock, ensure your hands are completely dry when plugging-in the filter pump.


IMPORTANT: **DO NOT DRY RUN THE FILTER PUMP** -Make sure both the pool's Inlet and Outlet valves are fully covered by water before operating the filter pump.

 On/Off button/Wi-Fi toggle


This button has two functions:


-On/off function: To start or stop the pump.

-Wi-Fi activation function: For more information, please refer to Wi-Fi operation instructions.

 Time setting button

During the set-up operation, the display will flash. Every time you push the set-up button, the timer will decrease 1 hour. When you reach the desired time, don't push any buttons for 5 seconds. The display light will stop flashing. The set-up is finished.

 Wi-Fi indicate light

 This LED indicates the status of the Wi-Fi connection. Check the Wi-Fi Indicator Light Definitions section for the different statuses of this LED.

Important:

1. After setting the run time, the pump will restart automatically at the same time the following day.
2. In case of power outage or power cord loosening, the running time of the product will be reset to a 10 hour default.





 Filter cartridge status indicator

 Filter indicator on: The filter element is dirty. Please replace/clean the filter cartridge.

 Digital display

"- -" Standby status, press the button  show the run setting time.


Wi-Fi Indicator Light Definitions

Indicator Display	Definition
 WiFi indicator lights on	Connected to the router
 WiFi indicator lights off	Light damaged / Wi-Fi module has problem
 WiFi indicator flashes quickly	Lost Wi-Fi signal
 WiFi indicator flashes slowly	Waiting to connect to the router

Caution: Wi-Fi indicator only indicates the state of connection between the pump and the wireless router. When your Wi-Fi indicator lights up but the device in the app is offline, please check whether your wireless router network is malfunctioning.

Trouble shooting

Important: If the detection shows "Er" or the app prompts "Fault", **turn off the power switch and resolve the problem according to the following solutions.**


Code	Reasons	Solutions
Device displays "Er"  or app prompts "Fault"	1. The circulatory system is blocked, and the pump has no water.	<ul style="list-style-type: none"> ● Make sure that the inlet and outlet of the pool are fully covered by water. ● Make sure the inlet and outlet valves are open. ● Exhaust air from the whole circulation system. ● For assistance, please visit the support website www.bestwaycorp.com.
The filter indicator lights up or app prompts, "Clean/replace the filter core!"	1. The filter element is dirty.	<ul style="list-style-type: none"> ● Take out the filter element and rinse it. ● Replace the filter element with a new one, in case the alarm remains. ● For assistance, please visit the support website www.bestwaycorp.com.

Bestway Smart Hub™ Connection Guide



Download the Bestway App from the Apple Store/Google Play Store or scan the QR code.

The device can only be connected to one mobile phone at a time. If you want to connect to another mobile phone, or your network has been changed, you can do as follows:

Press the On/Off Button  for 5 seconds. When the indicator flashes slowly, the device will clear the connection information of the previous mobile phone. Please follow the instructions to connect the new mobile phone to the pump.

Note: Before connecting the App to the pump, please make sure that your mobile device is close to the pump and the Wi-Fi signal is strong.

Note: This App supports Android 7.0 and above or iOS 10.0 and above.

Note: The device only supports distributing 2.4G network, but does not support 5G network.

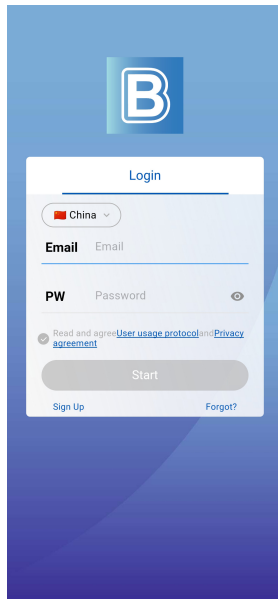
Note: It is not recommended to use public Wi-Fi. When connected to the public Wi-Fi, you may have issues with the input verification codes during Log-in.

Note: Open Location services in mobile settings before connecting your phone to the filter pump.

Note: Language setting can be changed in app.

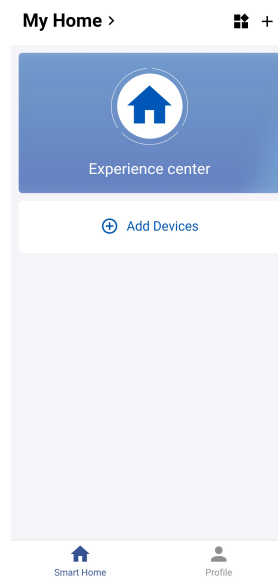
How to connect your phone to the filter pump.

1



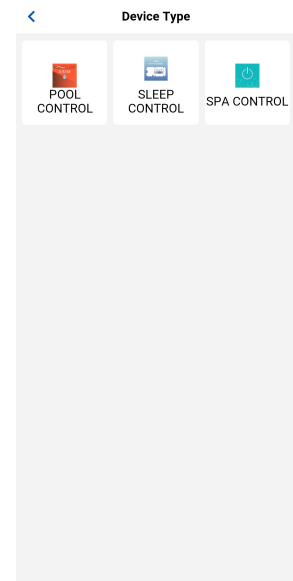
Register a Bestway account and log-in

2



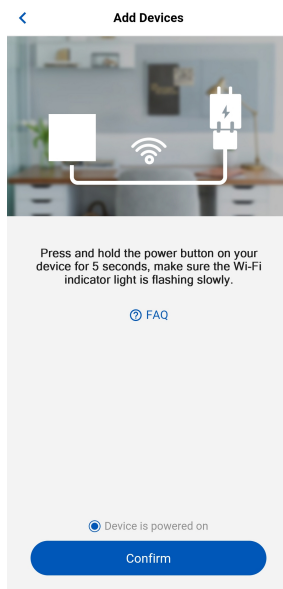
Press "Add Devices"

3



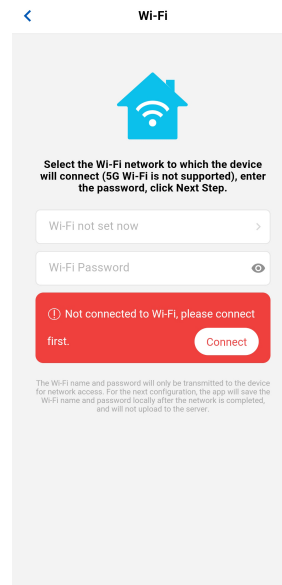
Select "POOL CONTROL"

4



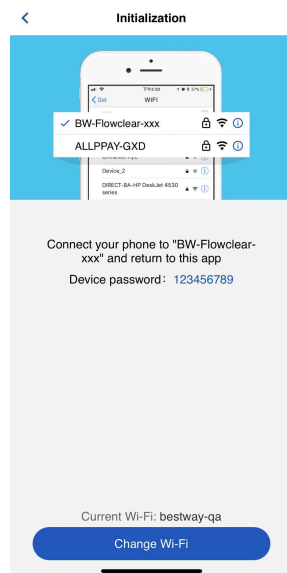
Click "Device is powered on" and confirm.

5



Select the Wi-Fi name
Enter the password.
Click "Next."

6



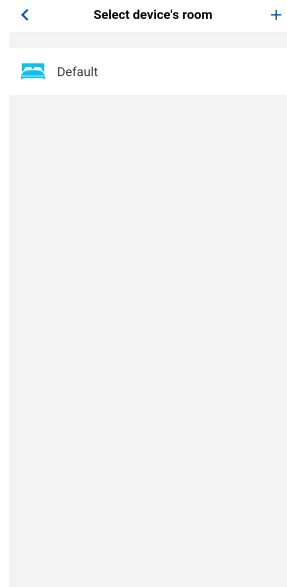
IOS only: Connect to the product's Wi-Fi network on your phone, Next enter password: 123456789. Android users can go directly to step 7.

7



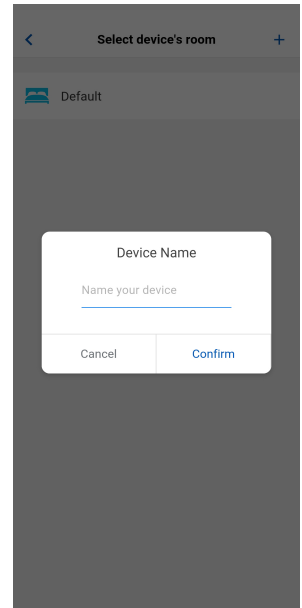
Wait until the connection is complete.

8



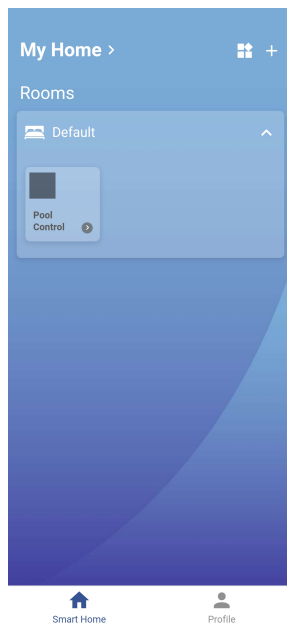
After connecting successfully, please select "Default"

9



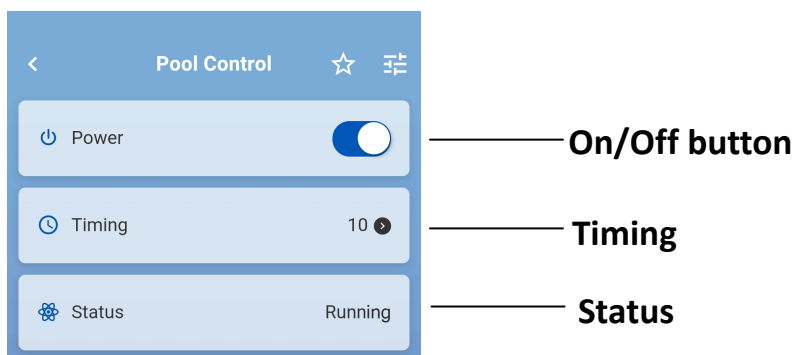
Name your device and confirm.

10



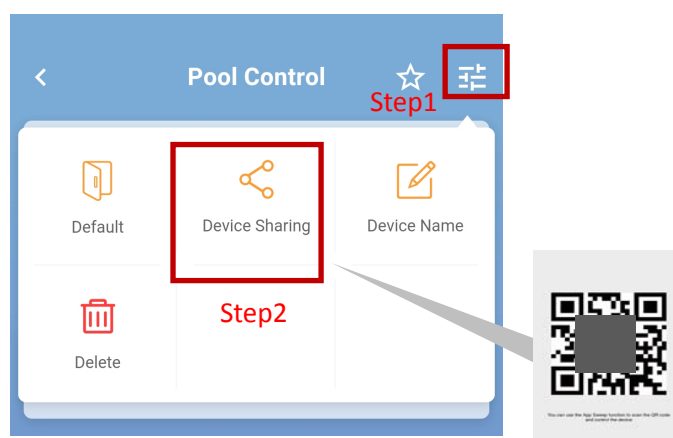
Select your device and it is now ready to use.

Control function

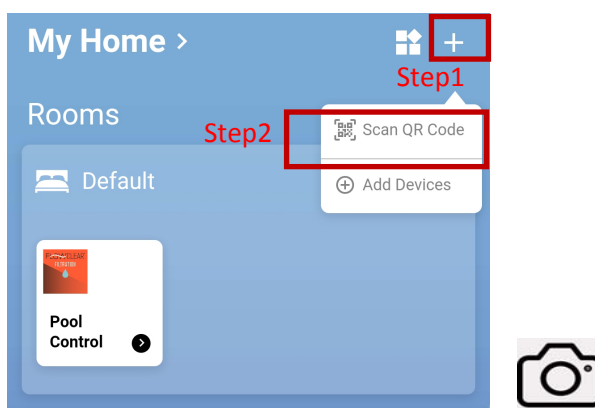


Sharing function

Phone A



Phone B



Note: Only one person can scan the Shared QR code generated each time. If you want to share it with another device, you must generate a new Shared QR code each time.

The Shared QR code expires after 15 minutes.

Important: The sharing function can only be used when users are in the same country.



Forgotten Password

If you forget your password, please follow these instructions to reset:

1. Open App and press "forgot"

2. Input your registered email address and select "Reset Password"
3. **You will receive a message**, and need to click "OK"
4. Open your email, where you will find an email from Bestway
5. Open the email and click the link
6. Input your registered email address and your new password, and click "Reset"
7. Log in with your new password.

Disconnect

Press the  button for 5 seconds until the  indicator is flashing.

PUMP MAINTENANCE

CAUTION: YOU MUST ENSURE THE FILTER PUMP IS UNPLUGGED BEFORE

ANY MAINTENANCE BEGINS OR FACE SEVERE RISK OF INJURY OR DEATH.

- 1) Unplug the Filter Pump.
- 2) Stop water flowing to the Filter Pump. (Refer to pool's manual.)
- 3) Unscrew the Filter Cap Retainer and remove the Filter Cap.
- 4) Clean the Filter Cartridge with a garden hose. If filter cartridge remains soiled or discolored, it is necessary to replace it with a new one.
- 5) Insert the cleaned (or new) Filter Cartridge; ensure it is centered in the Filter Pump.
- 6) Check that the Filter Cap Seal is in place.
- 7) Replace the Filter Cap and screw the Filter Cap Retainer into position.
- 8) Open the Valve A and B.
- 9) Follow the PUMP INSTALLATION DIRECTIONS section to prepare the system for use.

IMPORTANT: To ensure pool water stays clean, please clean the filter cartridge every day. For sanitary reasons, we suggest replacing the Filter Cartridge with a new one every two weeks.

PUMP STORAGE

- 1) Unplug the Filter Pump.
- 2) Stop water flowing into the Filter Pump and to remove the Filter Cartridge.
- 3) Discard the Filter Cartridge.
- 4) Detach all Hoses.
- 5) Dry all components thoroughly.
- 6) Store the filter pump in a dry location out of the reach of children. Storage temperature: 4-40°C (39.2-104°F)
- 7) Drain the pool according to the Pool Owner's Manual.

PUMP WARRANTY

For information concerning pump warranty please visit our website at:
www.bestwaycorp.com



For support please visit us at:
bestwaycorp.com/support

©2019 Bestway Inflatables & Material Corp.

All rights reserved/Tous droits réservés/Todos los derechos reservados/Alle Rechte vorbehalten/Tutti i diritti riservati

®™ Trademarks used in some countries under license to/

Marques ®™ utilisées dans certains pays sous la licence de/

Marcas comerciales ®™ utilizadas en algunos países bajo la licencia de/

®™ Die Warenzeichen werden in einigen Ländern verwendet unter Lizenz der/

®™ Marchi utilizzati in alcuni paesi concessi in licenza a

Bestway Inflatables & Material Corp., No.3065 Cao An Road, Shanghai, 201812, China.

Manufactured, distributed and represented in the European Union by/

Fabriqué, distribués et représentés dans l'Union Européenne par/Fabricado, distribuido y representado en la Unión Europea por/

Hergestellt, vertrieben und in der Europäischen Union vertreten von/Prodotto, distribuito e rappresentato nell'Unione Europea da

Bestway (Europe) S.r.l., Via Resistenza, 5, 20098 San Giuliano Milanese (Milano), Italy

Distributed in North America by/Distribués en Amérique du Nord par/Distribuido en Norteamérica por

Bestway (USA) Inc., 3411 E. Harbour Drive, Phoenix, Arizona 85034, United States of America

Tel: +86 21 69135588 (For U.S. and Canada)

Distributed in Latin America by/Distribués en Amérique latine par/Distribuido en Latinoamérica por/Distribuido na América Latina por

Bestway Central & South America Ltda, Salar Ascotan 1282, Parque Enea, Pudahuel, Santiago, Chile

Distributed in Australia & New Zealand by **Bestway Australia Pty Ltd, 98-104 Carnarvon Street, Silverwater, NSW 2128, Australia**

Tel: Australia: (+61) 29 0371 388; New Zealand: 0800 142 101

Exported by/Exporté par/Exportado por/Exportiert von/Esportato da

Bestway (Hong Kong) International Ltd./Bestway Enterprise Company Limited

Suite 713, 7/Floor, East Wing, Tsim Sha Tsui Centre, 66 Mody Road, Kowloon, Hong Kong

www.bestwaycorp.com

Made in China/Fabriqué en Chine/Fabricado en China/Hergestellt in China/Prodotto in Cina