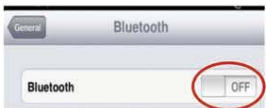


(2)



(3)



(4)



(5)



(6)

### Troubleshooting

- If the keyboard is not working with the iPad (or other Bluetooth devices) make sure:
  - 1) The Bluetooth function on the iPad (or other Bluetooth devices) is enabled.
  - 2) The Bluetooth keyboard is within 33 feet of the iPad.
  - 3) The passkey is entered correctly.
  - 4) Restart your device.
  - 5) Make sure the keyboard is charged, recharge if low.
  - 6) If you press the "⊗" button when both devices have been connected already it will disrupt the established connection. The keyboard will exhibit as though it not connected with the keyboard. To solve the issue simply restart the keyboard by turning it OFF and then ON again. You do not need to repair the device if it was done previously.

### Product Specifications

- 1) Transmit Range: up to 10 meters
- 2) Range of Frequency: 2402-2480MHz
- 3) Operating Voltage: 3.7Vdc (powered by Li-ion)
- 4) Operation current: <5mA
- 5) Standby current: 1.0mA
- 6) Sleep current: <0.25mA

# User Guide

## Wireless Keyboard

Model:K662

FCC ID:2ACGLK662



**Caution:** To properly operate this product, please read the user manual thoroughly.

This equipment has been tested and found to comply with the limits for a Class B digital device, pursuant to part 15 of the FCC Rules. These limits are designed to provide reasonable protection against harmful interference in a residential installation. This equipment generates, uses and can radiate radio frequency energy and, if not installed and used in accordance with the instructions, may cause harmful interference to radio communications. However, there is no guarantee that interference will not occur in a particular installation. If this equipment does cause harmful interference to radio or television reception, which can be determined by turning the equipment off and on, the user is encouraged to try to correct the interference by one or more of the following measures:

- Reorient or relocate the receiving antenna.
- Increase the separation between the equipment and receiver.
- Connect the equipment to an outlet on a circuit different from that to which the receiver is connected.

Note: Modifications to this product will void the user's authority to operate this equipment.

This device complies with Part 15 of the FCC Rules:

Operation is subject to the following two conditions:

1. This device may not cause harmful interference and
2. This device must accept any interference that is received, including any interference that may cause undesired operation.

### Welcome

Congratulation on selecting the Bluetooth Wireless Keyboard for your high tech devices. The super slim keyboard is quiet and crafted out of high grade plastic. In this present age of portable tech gadgets this is an ideal product for your iPad.

### Overview

- |   |                                     |                                      |
|---|-------------------------------------|--------------------------------------|
| <input type="checkbox"/> Main screen/Esc  | <input type="checkbox"/> Prev/Track | <input type="checkbox"/> Lock screen |
| <input type="checkbox"/> Virtual Keyboard | <input type="checkbox"/> Play/pause | <input type="checkbox"/> Function    |
| <input type="checkbox"/> Select All       | <input type="checkbox"/> Next/Track | <input type="checkbox"/> Command     |
| <input type="checkbox"/> Copy             | <input type="checkbox"/> Mute       | <input type="checkbox"/> Delete      |
| <input type="checkbox"/> Paste            | <input type="checkbox"/> Volume -   |                                      |
| <input type="checkbox"/> Cut              | <input type="checkbox"/> Volume +   |                                      |

- **fn-combination key**, press FN key can input the blue characters above on the keyboard or control the blue keys.
- **Control key + spacebar key** to change the keyboard input method.

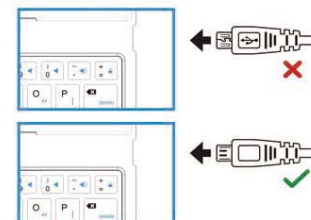
### Prompted

Blue LED blinking: Pairing  
Red LED on: Charging  
Green LED on: Battery is fully charged  
Green LED blinking: Low in Battery

### Installation Guide

#### Step 1. Charging the battery

1. For the first time user, Please charge the keyboard for at least 6 hours before using it. Thereafter, charge for at least 2 hours when the battery runs low.
2. The LED (green) will blink when battery is low. The LED (green) will stay solid when fully charged.
3. Connect the charging cable (included) to charge keyboard



#### How to Charge the battery:

To charge the keyboard, Connect the 5V.DC input from the keyboard into the computer USB port with the connector cable provided. The Keyboard can function while charging.

#### Step 2. Pairing your Bluetooth Keyboard with your iPad/iMac/ iPhone or other Bluetooth enabled device.

- The following sample shows how to pair the Bluetooth keyboard with your iPad.
- Before you can use your keyboard, you have to pair it with your iPad. Pairing allows your keyboard to communicate wirelessly with your iPad. You only have to perform the pairing once.
  1. Turn on the keyboard and press the "⊗" key on the keyboard. The LED light will blink blue. Then on the screen of the iPad, you search for Settings->Bluetooth.
  2. Enable the Bluetooth function, and it will search for the Bluetooth keyboard automatically. When the Bluetooth keyboard is discovered, select the "Bluetooth keyboard" from the iPad screen, a passkey will appear on the screen of the iPad. Type in the passkey provided and press the ENTER key on the keyboard. Your Bluetooth keyboard will then be successfully paired with your iPad.



(1)