



# TEST REPORT

**FCC ID: 2ACGI-TX900MHH**

**Applicant : Audio Resource Group, Inc**

**Address : 405 Main Ave W, Suite 4G, West Fargo, ND58078, USA**

**Equipment Under Test (EUT):**

Name	:	900MHz digital handheld microphone
Model	:	ARG-TX900M-HH,RAW-TX900M-HH, ARG-TX900M-HH-X,RAW-TX900M-HH-X, ARG-TX900M-HH-XX,RAW-TX900M-HH-XX, ARG-TX900M-HH-XXX, RAW-TX900M-HH-XXX

In Accordance with: FCC PART 15, SUBPART C : 2014 (Section 15.247)

Report No : T1850075 01

Date of Test : January 30, 2015 to February 26, 2015

Date of Issue : March 13, 2015

Test Result : PASS

In the configuration tested, the EUT complied with the standards specified above

Authorized Signature

(Mark Zhu)  
General Manager

The manufacture should ensure that all the products in series production are in conformity with the product sample detailed in this report. If the product in this report is used in any configuration other than that detailed in the report, the manufacturer must ensure the new system complies with all relevant standards. Any mention of Alpha Product Testing Laboratory Or test done by Alpha Product Testing Laboratory Approvals in connection with, distribution or use of the product described in this report must be approved by Alpha Product Testing Laboratory Approvals in writing.

## TABLE OF CONTENT

<b>1</b>	<b>General Information</b>	<b>3</b>
1.1	Description of Device (EUT)	3
1.2	Description of Test Facility	4
<b>2</b>	<b>EMC Equipment List</b>	<b>4</b>
<b>3</b>	<b>Test Procedure</b>	<b>5</b>
<b>4</b>	<b>Summary of Measurement</b>	<b>6</b>
4.1	Summary of test result	6
4.2	Test connection	6
4.3	Assistant equipment used for test	7
4.4	Test mode	7
4.5	Test Conditions	7
4.6	Measurement Uncertainty (95% confidence levels, k=2)	7
<b>5</b>	<b>Spurious Emission</b>	<b>8</b>
5.1	Radiation Emission	8
<b>6</b>	<b>POWER LINE CONDUCTED EMISSION</b>	<b>15</b>
6.1	Conducted Emission Limits(15.207)	15
6.2	Test Setup	15
6.3	Test Procedure	16
6.4	Test Results	16
<b>7</b>	<b>Conducted Maximum Output Power</b>	<b>17</b>
7.1	Test limit	17
7.2	Test Procedure	17
7.3	Test Setup	17
7.4	Test Results	17
<b>8</b>	<b>PEAK POWER SPECTRAL DENSITY</b>	<b>18</b>
8.1	Test limit	18
8.2	Method of measurement	18
8.3	Test Setup	18
8.4	Test Results	18
<b>9</b>	<b>Bandwidth</b>	<b>21</b>
9.1	Test limit	21
9.2	Method of measurement	21
9.3	Test Setup	21
9.4	Test Results	21
<b>10</b>	<b>Band Edge Check</b>	<b>24</b>
10.1	Test limit	24
10.2	Test Procedure	24
10.3	Test Setup	24
10.4	Test Result	24
<b>11</b>	<b>Antenna Requirement</b>	<b>27</b>
11.1	Standard Requirement	27
11.2	Antenna Connected Construction	27
11.3	Result	27
<b>12</b>	<b>Photographs of Test Setup</b>	<b>28</b>
12.1	Photos of Radiated emission	28
<b>13</b>	<b>Photographs of EUT</b>	<b>29</b>

# 1 General Information

## 1.1 Description of Device (EUT)

EUT	: 900MHz digital handheld microphone
Model No.	: ARG-TX900M-HH, RAW-TX900M-HH, ARG-TX900M-HH-X, RAW-TX900M-HH-X, ARG-TX900M-HH-XX, RAW-TX900M-HH-XX, ARG-TX900M-HH-XXX, RAW-TX900M-HH-XXX
DIFF	Only different in Model No, the other the same. The test model: ARG-TX900M-HH
Trade mark	: ARG
Power supply	: DC 3V, 2*1.5V AA Battery
Radio Technology	: O-QPSK
Operation frequency	: 903-927MHz
Channel No.	25 Channels
Modulation	: O-QPSK
Antenna Type	: Integrated Antenna, max gain 0dBi.
Applicant	: Audio Resource Group, Inc
Address	: 405 Main Ave W, Suite 4G, West Fargo, ND58078, USA
Manufacturer	: Shenzhen Alors Technology Co., Ltd.
Address	: South of 4th Floor, BLDG23, LianChuang Sci&Tech Park, Bulan Road, LongGang District, Shenzhen

## 1.2 Description of Test Facility

Alpha Product Testing Laboratory  
Building B, East Area of Nanchang Second, Industrial Zone, Gushu 2nd Road,  
Bao'an, Shenzhen, China

August 11, 2014 File on Federal Communication Commission  
Registration Number: 203110

July 18, 2014 Certificated by IC  
Registration Number: 12135A

## 2 EMC Equipment List

Equipment	Manufacture	Model No.	Serial No.	Last cal.	Cal Interval
3m Semi-Anechoic	ETS-LINDGREN	N/A	SEL0017	2015.01.19	1 Year
Spectrum analyzer	Agilent	E4407B	MY49510055	2015.01.19	1 Year
Receiver	R&S	ESCI	101165	2015.01.19	1 Year
Bilog Antenna	SCHWARZBECK	VULB 9168	9168-438	2015.01.21	2 Year
Horn Antenna	SCHWARZBECK	BBHA 9120 D	BBHA 9120 D(1201)	2015.01.21	2 Year
Horn Antenna	SCHWARZBECK	BBHA 9170	BBHA 9170 D(1432)	2015.01.21	2 Year
Active Loop Antenna	Beijing Daze	ZN30900A	SEL0097	2015.01.19	1 Year
Cable	Resenberger	SUCOFLEX 104	MY6562/4	2015.01.19	1 Year
Cable	Resenberger	SUCOFLEX 104	309972/4	2015.01.19	1 Year
Cable	Resenberger	SUCOFLEX 104	329112/4	2015.01.19	1 Year
Pre-amplifier	SCHWARZBECK	BBV9743	9743-019	2015.01.19	1 Year
Pre-amplifier	Quietek	AP-180C	CHM-0602012	2015.01.19	1 Year
Power Meter	Anritsu	ML2487A	6K00001491	2015.01.19	1 Year
Power sensor	Anritsu	ML2491A	32516	2015.01.19	1 Year

### 3 Test Procedure

**POWER LINE CONDUCTED INTERFERENCE:** The test procedure used was ANSI Standard C63.4-2009 using a 50 u H LISN. Both Lines were observed. The bandwidth of the receiver was 10kHz with an appropriate sweep speed. The ambient temperature of the EUT was 25°C with a humidity of 58%.

**RADIATION INTERFERENCE:** The test procedure used was ANSI Standard C63.4-2009 using a ANRITSU spectrum analyzer with a pre-selector. The analyzer was calibrated in dB above a micro volt at the output of the antenna. The resolution bandwidth was 100kHz and the video bandwidth was 300 kHz up to 1 GHz and 1 MHz with a video BW of 3MHz above 1 GHz. The ambient temperature of the EUT was 25°C with a humidity of 58%.

**FORMULA OF CONVERSION FACTORS:** The Field Strength at 3m was established by adding the meter reading of the spectrum analyzer (which is set to read in units of dBuV) to the antenna correction factor supplied by the antenna manufacturer and cable loss. The antenna correction factors and cable loss are stated in terms of dB. The gain of the Pre-selector was accounted for in the Spectrum Analyzer Meter Reading.

Example:

Freq (MHz) METER READING + ACF + CABLE = FS

33.20 dBuV + 10.36 dB + 0.9 dB= 44.46 dBuV/m @ 3m

**ANSI STANDARD C63.4-2009 10.1.7 MEASUREMENT PROCEDURES:** The EUT was placed on a table 80 cm high and with dimensions of 1m by 1.5m. The EUT was placed in the center of the table (1.5m side). The table used for radiated measurements is capable of continuous rotation. When an emission was found, the table was rotated to produce the maximum signal strength. At this point, the antenna was raised and lowered from 1m to 4m. The antenna was placed in both the horizontal and vertical planes. The situation was similar for the conducted measurement except that the table did not rotate. The EUT was setup as described in ANSI Standard C63.4-2009 10.1.7 with the EUT 40 cm from the vertical ground wall.

## 4 Summary of Measurement

### 4.1 Summary of test result

Test Item	Test Requirement	Standards Paragraph	Result
Spurious Emission	FCC PART 15:2014	Section 15.247&15.209	Compliance
Conduction Emission	FCC PART 15:2014	Section 15.207	N/A
Bandwidth Test	FCC PART 15:2014	Section 15.247	Compliance
Peak Power	FCC PART 15:2014	Section 15.247	Compliance
Power Density	FCC PART 15:2014	Section 15.247	Compliance
Band Edge	FCC PART 15:2014	Section 15.247	Compliance
Antenna Requirement	FCC PART 15:2014	Section 15.203	Compliance
Note: N/A means this test item is not applicable for this device.			

Note: The EUT has been tested as an independent unit. And Continual Transmitting in maximum power (Fully charged battery is used during the test)

EUT is configured to transmit continuously (Duty cycle) is 100% , average correction factor =  $20 \log 1=0$

### 4.2 Test connection

1, EUT was placed on a turn table, which is 0.8 meter high above ground.

**TX Mode:**

EUT
-----

### 4.3 Assistant equipment used for test

Description	:	N/A
Manufacturer	:	N/A
Model No.	:	N/A

### 4.4 Test mode

The EUT was used to control EUT work in Continuous TX mode, and select test channel, wireless mode

#### Channel List

Channel No.	Frequency (MHz)	Channel No.	Frequency (MHz)	Channel No.	Frequency (MHz)
1	903	10	912	19	921
2	904	11	913	20	922
3	905	12	914	21	923
4	906	13	915	22	924
5	907	14	916	23	925
6	908	15	917	24	926
7	909	16	918	25	927
8	910	17	919		
9	911	18	920		

### 4.5 Test Conditions

Temperature range	21-25℃
Humidity range	40-75%
Pressure range	86-106kPa

### 4.6 Measurement Uncertainty (95% confidence levels, k=2)

Item	MU	Remark
Uncertainty for Power point Conducted Emissions Test	2.42dB	
Uncertainty for Radiation Emission test in 3m chamber (below 30MHz)	2.13 dB	Polarize: V
	2.57dB	Polarize: H
Uncertainty for Radiation Emission test in 3m chamber (30MHz to 1GHz)	3.54dB	Polarize: V
	4.1dB	Polarize: H
Uncertainty for Radiation Emission test in 3m chamber (1GHz to 25GHz)	2.08dB	Polarize: H
	2.56dB	Polarize: V
Uncertainty for radio frequency	1×10-9	
Uncertainty for DC and low frequency voltages	0.06%	

## 5 Spurious Emission

### 5.1 Radiation Emission

#### 5.1.1 Radiation Emission Limits(15.209)

Frequencies (MHz)	Field Strength (microvolts/meter)	Measurement Distance (meters)
0.009~0.490	2400/F(KHz)	300
0.490~1.705	24000/F(KHz)	30
1.705~30.0	30	30
30~88	100	3
88~216	150	3
216~960	200	3
Above 960	500	3

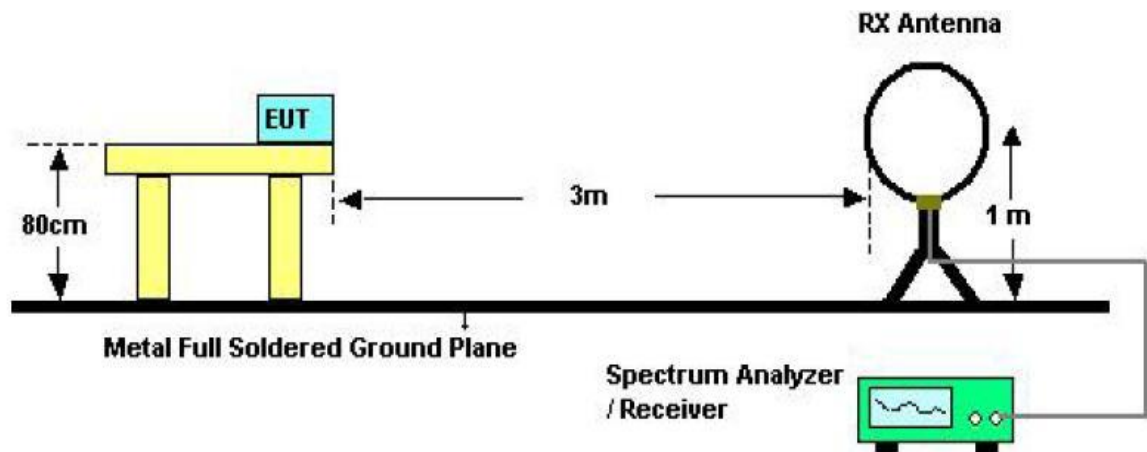
Harmonic emissions limits comply with below 54 dBuV/m at 3m. Other emissions radiated outside of the specified frequency bands, except for harmonics, shall be attenuated by at least 50 dB below the level of the fundamental or comply with the radiated emissions limits specified in section 15.209(a) limit in the table below has to be followed.

**NOTE:**

- The tighter limit applies at the band edges.
- Emission Level(dB uV/m)=20log Emission Level(Uv/m)

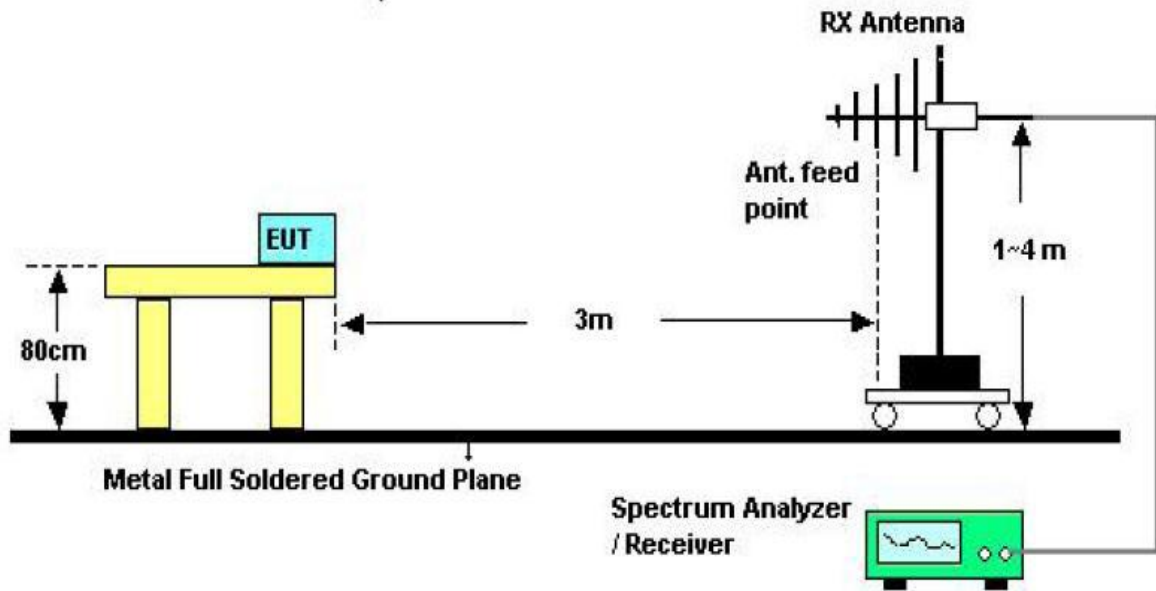
#### 5.1.2 Test Setup

See the next page

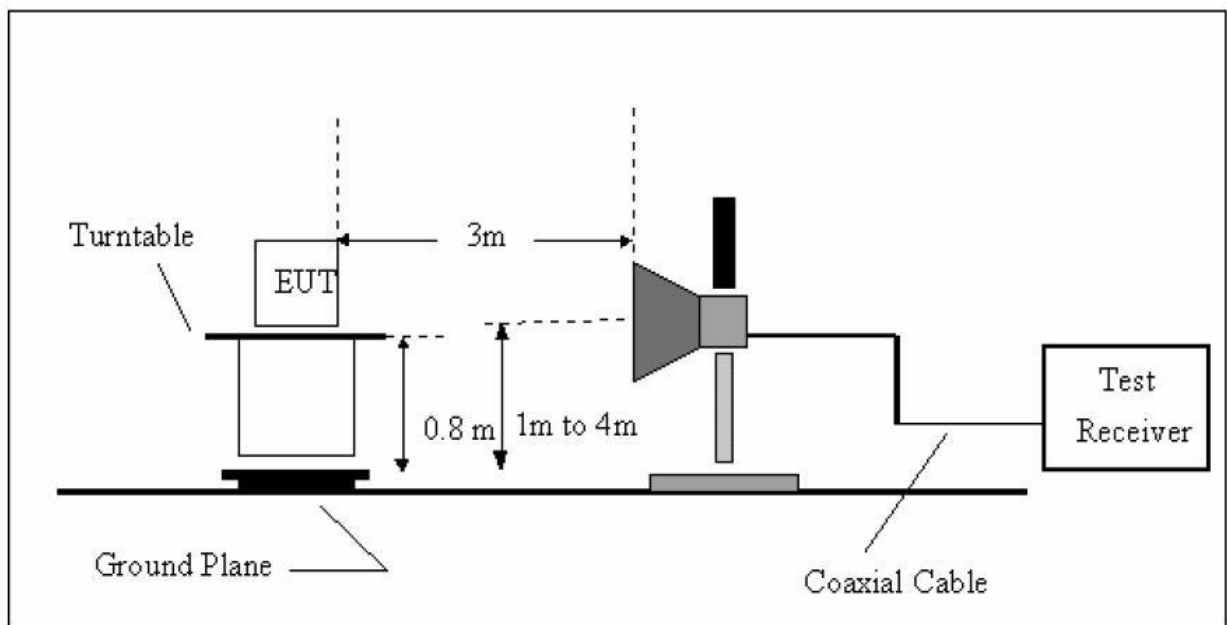


Below 30MHz Test Setup





Above 30MHz Test Setup



Above 1GHz Test Setup

### 5.1.3 Test Procedure

- a) The measuring distance of 3m shall be used for measurements at frequency up to 1GHz and above 1GHz, The EUT was placed on a rotating 0.8 m high above ground, The table was rotated 360 degrees to determine the position of the highest radiation
- b) The Test antenna shall vary between 1m and 4m, Both Horizontal and Vertical antenna are set of make measurement.
- c) The initial step in collecting conducted emission data is a spectrum analyzer Peak detector mode pre-scanning the measurement frequency range. Significant Peaks are then marked. And then Qusia Peak Detector mode premeasured
- d) If Peak value comply with QP limit Below 1GHz. The EUT deemed to comply with QP limit. But the Peak value and average value both need to comply with applicable limit above 1GHz.
- e) For the actual test configuration, please see the test setup photo.
- f) Test for all x, y, z axes is performed and only the worst case of y axes was recorded in the test report.

### 5.1.4 Test Equipment Setting For emission test Result.

9KHz~150KHz	RBW 200Hz	VBW 1KHz
150KHz~30MHz	RBW 9KHz	VBW 30KHz
30MHz~1GHz	RBW 120KHz	VBW 300KHz
Above 1GHz	RBW 1MHz	VBW 3MHz

### 5.1.5 Test Condition

Continual Transmitting in maximum power.

### 5.1.6 Test Result

We have scanned the 10th harmonic from 9KHz to the EUT.  
Detailed information please see the following page.

From 9KHz to 30MHz: Conclusion: PASS

Note: The amplitude of spurious emissions which are attenuated by more than 20dB below the permissible value has no need to be reported.

Remark: Only show the test data of the worst Channel in this report.

From 30MHz to 1000MHz: Conclusion: PASS

30—1000MHz Radiated emission Test result														
EUT: 900MHz digital handheld microphone					M/N: ARG-TX900M-HH									
Power: DC 3.0V From battery														
Test date: 2015-02-06     Test site: 3m Chamber     Tested by: Store Chu														
Test mode: Tx Mode														
Antenna polarity: Vertical														
No	Freq (MHz)	Read Level (dBuV/m)	Antenna Factor (dB/m)	Cable loss(dB)	Amp Factor (dB)	Result (dBuV/m)	Limit (dBuV/m)	Margin (dB)	Remark					
1	47.99	48.72	13.59	0.09	31.83	30.57	40	9.43	PK					
2	71.83	51.28	10.51	0.19	31.69	30.29	40	9.71	PK					
3	83.82	53.61	9.35	0.23	31.53	31.66	40	8.34	PK					
4	185.79	47.26	10.95	0.57	31.0	27.78	43.5	15.72	PK					
5	/	/												
	/	/												
<b>Antenna Polarity: Horizontal</b>														
1	47.99	50.26	13.59	0.09	31.83	33.39	40	6.61	PK					
2	71.83	47.85	10.51	0.19	31.69	27.6	40	12.4	PK					
3	83.82	50.26	9.35	0.23	31.53	27.31	40	12.69	PK					
4	185.79	51.36	10.95	0.57	31.0	29.88	43.5	13.62	PK					
5														
	/	/												

Note:  
 1,Measuring frequency from 30MHz to 1GHz  
 2,Spectrum Set for PK measure: RBW=100KHz, VBW=300KHz, Sweep time=Auto,  
 Detector: PK  
 3, Result = Read level + Antenna factor + cable loss-Amp factor  
 4, All the other emissions not reported were too low to read and deemed to comply with FCC limit.

## Above 1GHz

1GHz—25GHz Radiated emissison Test result									
EUT: 900MHz digital handheld microphone					M/N: ARG-TX900M-HH				
Power: DC 3.0V from battery									
Test date: 2015-02-06    Test site: 3m Chamber    Tested by: Store Chu									
Test mode: 903MHz									
Antenna polarity: Vertical									
No	Freq (MHz)	Read Level (dBuV/m)	Antenna Factor (dB/m)	Cable loss(dB)	Amp Factor (dB)	Result (dBuV/m)	Limit (dBuV/m)	Margin (dB)	Remark
1	1806	52.16	25.03	3.45	34.85	45.79	74	28.21	PK
2	1806	42.63	25.03	3.45	34.85	36.26	54	17.74	AV
3	2709	44.54	27.88	4.19	34.98	41.63	74	32.37	PK
4	2709	33.76	27.88	4.19	34.98	30.85	54	23.15	AV
5	/	/							
	/	/							
Antenna Polarity: Horizontal									
1	1806	51.85	25.03	3.45	34.85	45.48	74	28.52	PK
2	1806	42.63	25.03	3.45	34.85	36.26	54	17.74	AV
3	2709	44.73	27.88	4.19	34.98	41.82	74	32.18	PK
4	2709	33.95	27.88	4.19	34.98	31.04	54	22.96	AV
5									
	/	/							
Note:									
1,Measuring frequency from 1GHz to 25GHz									
2,Spectrum Set for PK measure: RBW=1MHz, VBW=1MHz, Sweep time=Auto, Detector: PK									
2,Spectrum Set for AV measure: RBW=1MHz, VBW=3MHz, Sweep time=Auto, Detector: RMS									
3, Result = Read level + Antenna factor + cable loss-Amp factor									
4, All the other emissions not reported were too low to read and deemed to comply with FCC limit.									

1GHz—25GHz Radiated emissison Test result									
EUT: 900MHz digital handheld microphone					M/N: ARG-TX900M-HH				
Power: DC 3.0V from battery									
Test date: 2015-02-06		Test site: 3m Chamber			Tested by: Store Chu				
Test mode: 915MHz									
Antenna polarity: Vertical									
No	Freq (MHz)	Read Level (dBuV/m)	Antenna Factor (dB/m)	Cable loss(dB)	Amp Factor (dB)	Result (dBuV/m)	Limit (dBuV/m)	Margin (dB)	Remark
1	1830	55.67	25.1	3.47	34.86	49.38	74	24.62	PK
2	1830	41.68	25.1	3.47	34.86	35.39	54	18.61	AV
3	2745	47.29	27.9	4.25	34.98	44.46	74	29.54	PK
4	2745	33.86	27.9	4.25	34.98	31.03	54	22.97	AV
5									
	/	/							
Antenna Polarity: Horizontal									
1	1830	53.29	25.1	3.47	34.86	47	74	27	PK
2	1830	40.96	25.1	3.47	34.86	34.67	54	19.33	AV
3	2745	47.29	27.9	4.25	34.98	44.46	74	29.54	PK
4	2745	42.65	27.9	4.25	34.98	39.82	54	14.18	AV
5									
	/	/							
Note:									
1, Measuring frequency from 1GHz to 25GHz									
2,Spectrum Set for PK measure: RBW=1MHz, VBW=1MHz, Sweep time=Auto, Detector: PK									
2,Spectrum Set for AV measure: RBW=1MHz, VBW=3MHz, Sweep time=Auto, Detector: RMS									
3, Result = Read level + Antenna factor + cable loss-Amp factor									
4, All the other emissions not reported were too low to read and deemed to comply with FCC limit.									

1GHz—25GHz Radiated emissison Test result									
EUT: 900MHz digital handheld microphone					M/N: ARG-TX900M-HH				
Power: DC 3.0V from battery									
Test date: 2015-02-06			Test site: 3m Chamber		Tested by: Store Chu				
Test mode: 927MHz									
Antenna polarity: Vertical									
No	Freq (MHz)	Read Level (dBuV/m)	Antenna Factor (dB/m)	Cable loss (dB)	Amp Factor (dB)	Result (dBuV/m)	Limit (dBuV/m)	Margin (dB)	Remark
1	1854	51.79	25.16	3.48	34.86	45.57	74	28.43	PK
2	1854	39.86	25.16	3.48	34.86	33.64	54	20.36	AV
3	2781	42.79	27.9	4.25	34.98	39.96	74	34.04	PK
4	2781	32.04	27.9	4.25	34.98	29.21	54	24.79	AV
5	/	/							
Antenna Polarity: Horizontal									
1	1854	51.63	25.16	3.48	34.86	45.41	74	28.59	PK
2	1854	41.09	25.16	3.48	34.86	34.87	54	19.13	AV
3	2781	44.38	27.9	4.25	34.98	41.55	74	32.45	PK
4	2781	30.48	27.9	4.25	34.98	27.65	54	26.35	AV
5	/	/							
Note:									
1, Measuring frequency from 1GHz to 25GHz									
2, Spectrum Set for PK measure: RBW=1MHz, VBW=1MHz, Sweep time=Auto, Detector PK									
2,Spectrum Set for AV measure: RBW=1MHz, VBW=3MHz, Sweep time=Auto, Detector RMS									
3, Result = Read level + Antenna factor + cable loss-Amp factor									
4, All the other emissions not reported were too low to read and deemed to comply with FCC limit.									

## 6 POWER LINE CONDUCTED EMISSION

### 6.1 Conducted Emission Limits(15.207)

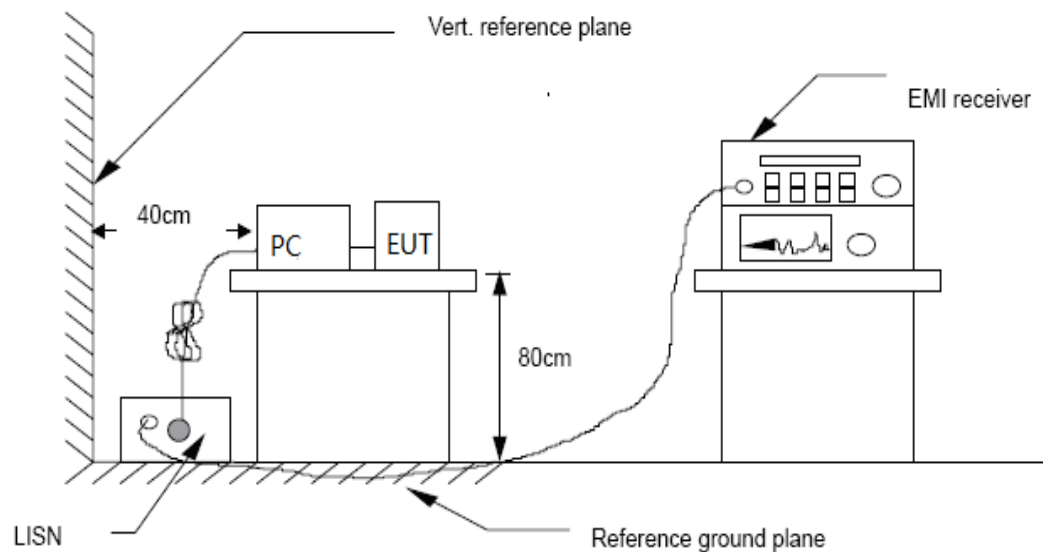
Frequency MHz	Limits dB( $\mu$ V)	
	Quasi-peak Level	Average Level
0.15 -0.50	66 -56*	56 - 46*
0.50 -5.00	56	46
5.00 -30.00	60	50

Notes: 1. \*Decreasing linearly with logarithm of frequency.

2. The lower limit shall apply at the transition frequencies.

3. The limit decreases in line with the logarithm of the frequency in the range of 0.15 to 0.50 MHz.

### 6.2 Test Setup



### 6.3 Test Procedure

The EUT is put on the plane 0.8m high above the ground by insulating support and is connected to the power mains through a line impedance stabilization network (L.I.S.N.). This provides a 50ohm coupling impedance for the EUT system. Please refer the block diagram of the test setup and photographs. Both sides of AC lines are checked to find out the maximum conducted emission. In order to find the maximum emission levels, the relative positions of equipment and all of the interface cables shall be changed according to ANSI C63.4-2009 on Conducted Emission Measurement. The bandwidth of test receiver (R & S ESCS30) is set at 9 kHz.

### 6.4 Test Results

Not applicable to battery operated product.



## 7 Conducted Maximum Output Power

### 7.1 Test limit

Please refer section 15.247.

Regulation 15.247(b) The limit of Maximum Peak Output Power Measurement is 1W(30dBm)

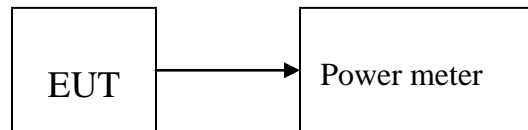
### 7.2 Test Procedure

7.2.1 Connected the EUT's antenna port to peak power meter by 20dB attenuator.

7.2.2 Measure out each mode and each bands peak output power of EUT.

Note: The cable loss and attenuator loss were offset into measure device as amplitude offset.  
Details see the KDB558074 D01 DTS Meas Guidance v03r02.

### 7.3 Test Setup



### 7.4 Test Results

PASS

Detailed information please see the Below.

Channel	Frequency (MHz)	PK Output Power (dBm)	PK Output Power (mW)	Limit (dBm)
CH1	903	9.60	9.12	30
CH7	915	9.52	8.95	30
CH12	927	9.16	8.24	30

## 8 PEAK POWER SPECTRAL DENSITY

### 8.1 Test limit

8.1.1 Please refer section 15.247.

8.1.2 For direct sequence systems, the peak power spectral density conducted from the intentional radiator to the antenna shall not be greater than 8dBm in any 3kHz band during any time interval of continuous transmission.

8.1.3 The direct sequence operating of the hybrid system, with the frequency hopping operation turned off, shall comply with the power density requirements of paragraph (d) of this section.

### 8.2 Method of measurement

Details see the KDB558074 D01 DTS Meas Guidance v03r02.

8.2.1 Place the EUT on the table and set it in transmitting mode.

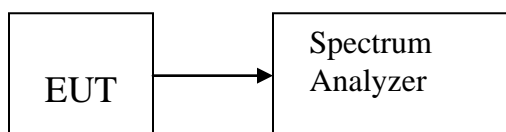
8.2.2 Remove the antenna from the EUT and then connect a low loss RF cable from the antenna port to the spectrum analyzer.

8.2.3 Set the spectrum analyzer as RBW = 3kHz, VBW = 10kHz, span=1.5OBW, detail see the test plot.

8.2.4 Record the max reading.

8.2.5 Repeat the above procedure until the measurements for all frequencies are completed.

### 8.3 Test Setup



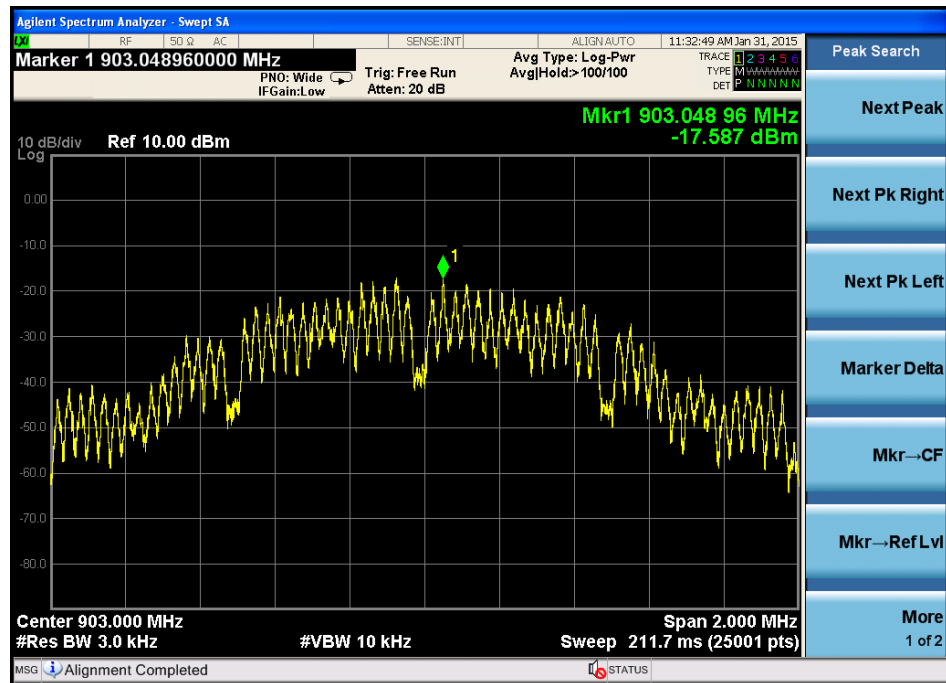
### 8.4 Test Results

PASS.

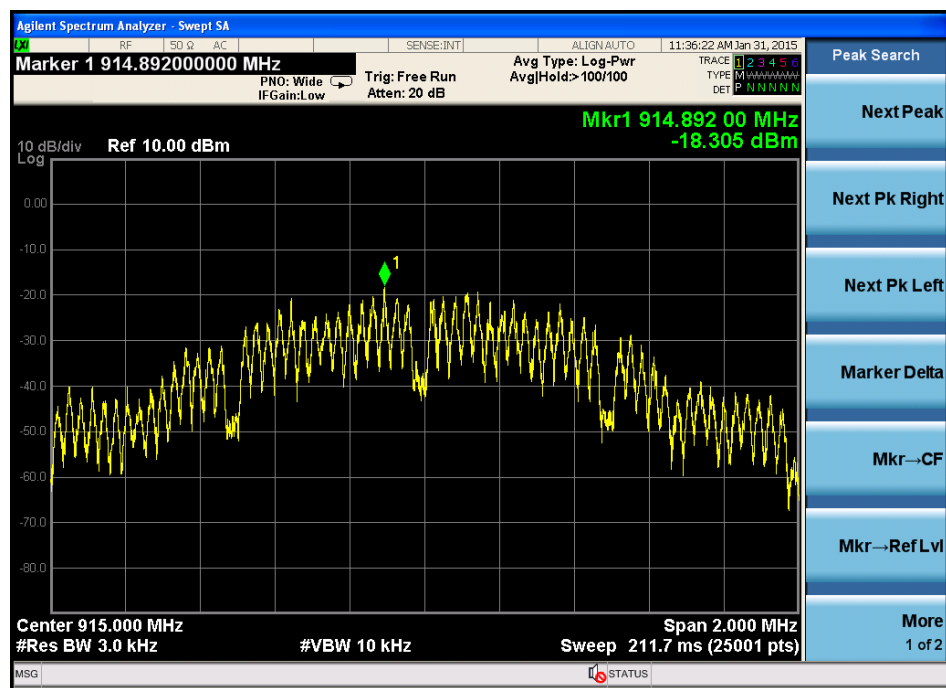
Detailed information please see the following page.

Channel	Frequency (MHz)	Power Spectral Density (dBm/3KHz)	Limit (dBm/3KHz)	Result
CH1	903	-17.587	8	PASS
CH7	915	-18.305	8	PASS
CH12	927	-16.953	8	PASS

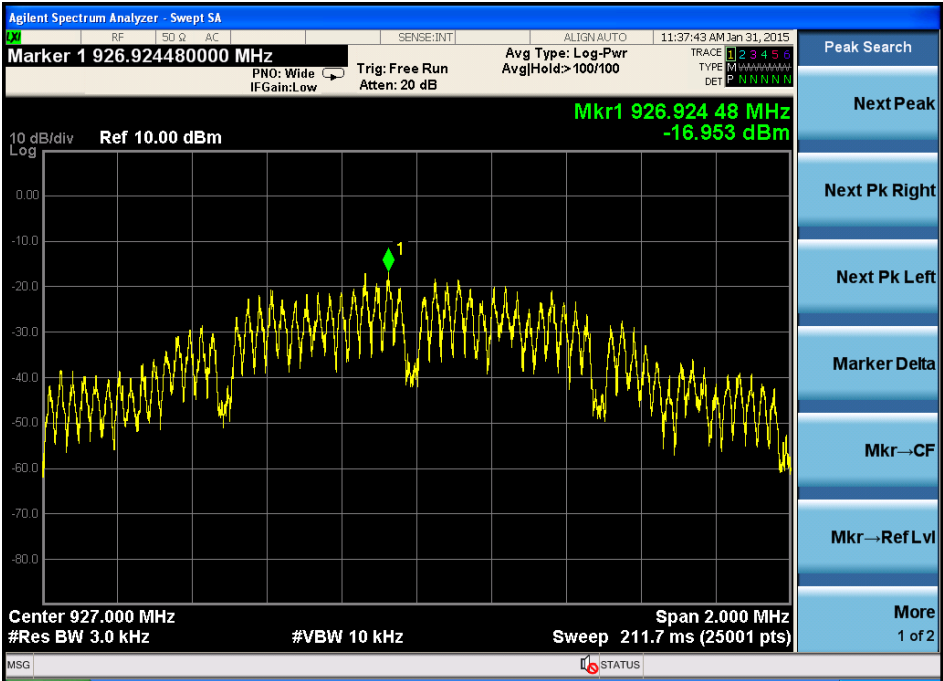
CH Low :



CH Mid :



CH High :



## 9 Bandwidth

### 9.1 Test limit

Please refer section 15.247

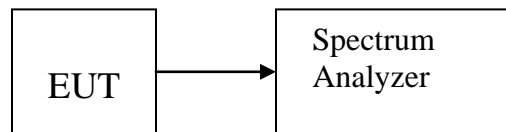
For direct sequence systems, the minimum 6dB bandwidth shall be at least 500kHz.

### 9.2 Method of measurement

Details see the KDB558074 D01 DTS Meas Guidance v03r02.

- a) The bandwidth is measured at an amplitude level reduced 20dB from the reference level. The reference level is the level of the highest amplitude signal observed from the transmitter at the fundamental frequency. Once the reference level is established, the equipment is conditioned with typical modulating signal to produce the worst-case (i.e. the widest) bandwidth.
- b)
- b) The test receiver set RBW = 100KHz, VBW  $\geq$  3RBW, Sweep time set auto, detail see the test plot.

### 9.3 Test Setup



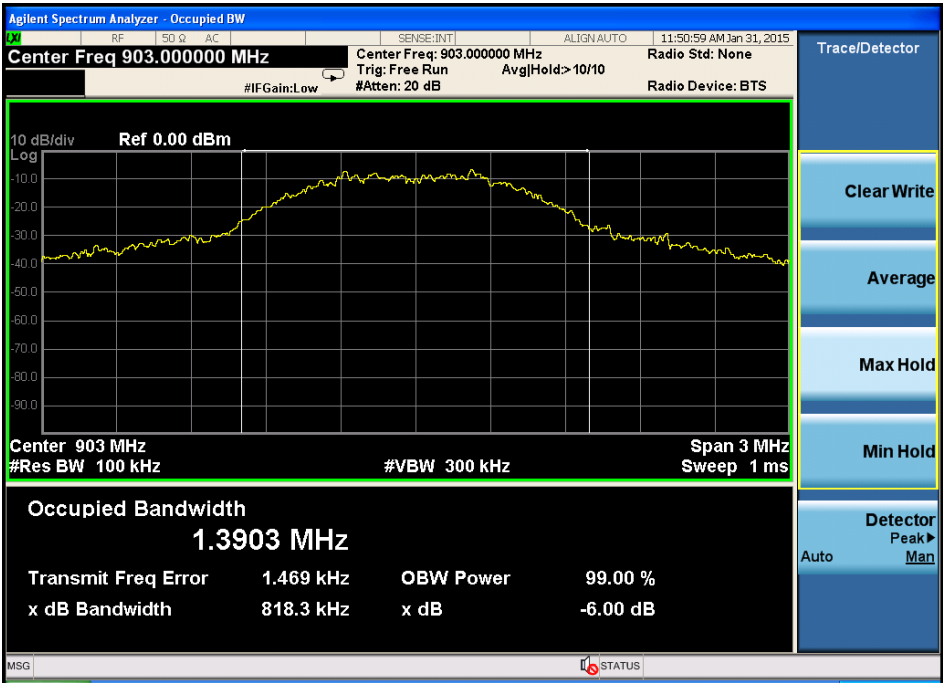
### 9.4 Test Results

PASS.

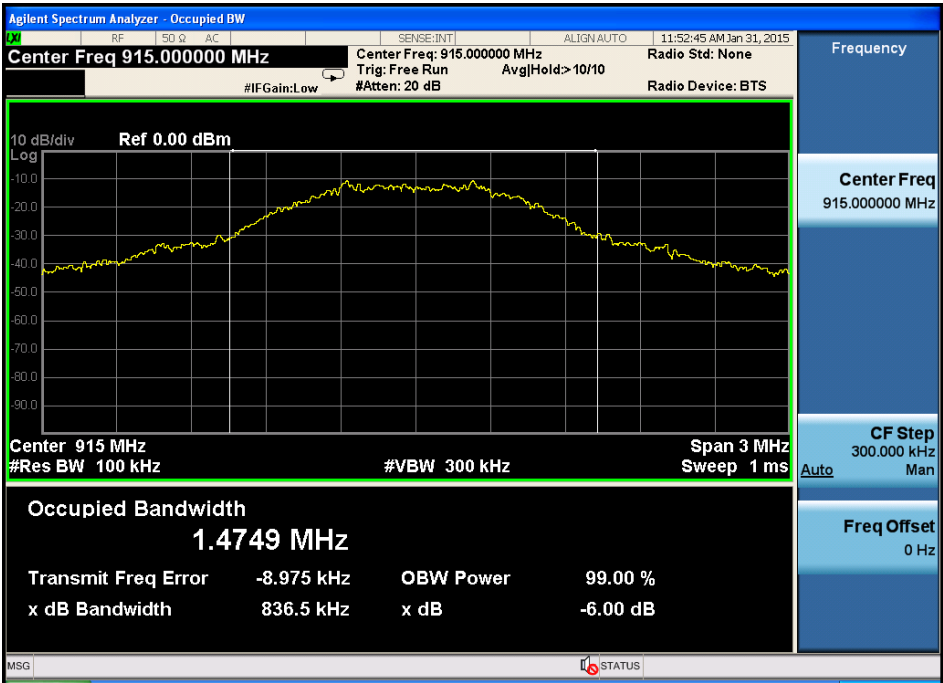
Detailed information please see the following page.

Channel	Frequency (MHz)	6dB Bandwidth (MHz)	Limit (MHz)	Result
CH1	903	0.8183	0.5	PASS
CH7	915	0.8365	0.5	PASS
CH12	927	0.8249	0.5	PASS

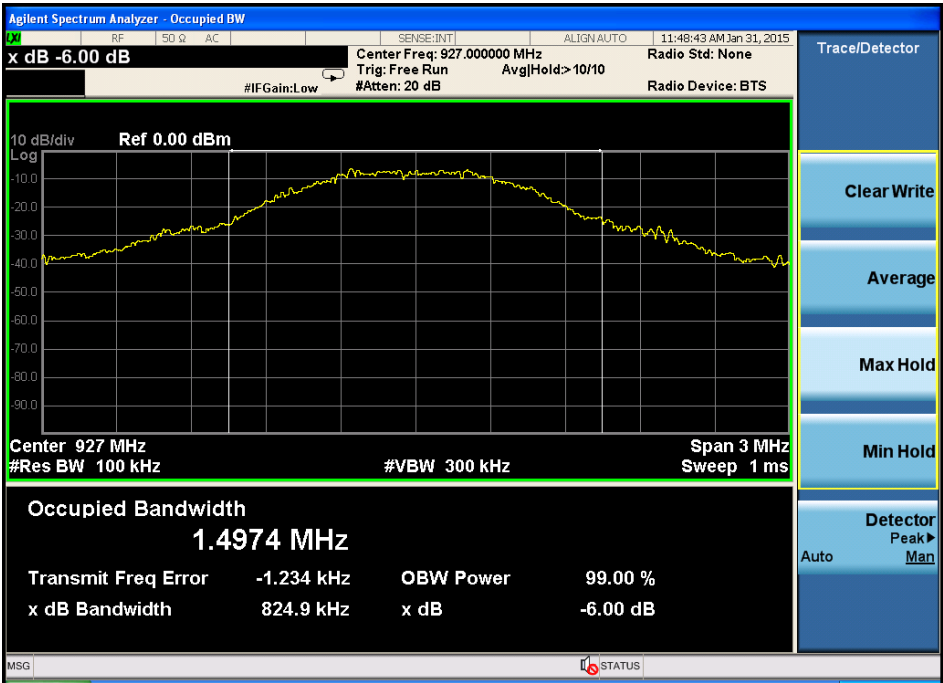
CH Low :



CH Mid :



CH High :



## 10 Band Edge Check

### 10.1 Test limit

Please refer section 15.247

All the lower and upper band-edges emissions appearing within restricted frequency bands shall not exceed the limits shown in 15.209, all the other emissions outside operation shall be at least 20dB below the fundamental emissions, or comply with 15.209 limits.

### 10.2 Test Procedure

10.2.1 Put the EUT on a 0.8m high table, power on the EUT. Emissions were scanned and measured rotating the EUT to 360 degrees, Find the maximum Emission

10.2.2 Check the spurious emissions out of band.

10.2.3 RBW, VBW Setting, please see the following test plot.

### 10.3 Test Setup

Same as 5.2.2.

### 10.4 Test Result

PASS.



30—1000MHz Radiated emissison Test result									
EUT: 900MHz digital handheld microphone						M/N: ARG-TX900M-HH			
Power: DC 3.0V From battery									
Test date: 2015-02-06    Test site: 3m Chamber    Tested by: Store Chu									
Test mode: Tx Mode 903MHz									
Antenna polarity: Vertical									
No	Freq (MHz)	Read Level (dBuV/m)	Antenna Factor (dB/m)	Cable loss(dB)	Amp Factor (dB)	Result (dBuV/m)	Limit (dBuV/m)	Margin (dB)	Remark
1	902	51.28	21.67	1.41	29.2	45.16	46	0.84	PK
2	/	/							
3	/	/							
4	/	/							
5	/	/							
	/	/							
Antenna Polarity: Horizontal									
1	902	48.26	21.67	1.41	29.2	42.14	46	3.86	PK
2	/	/							
3	/	/							
4	/	/							
5	/	/							
	/	/							
Note:									
1,Measuring frequency from 30MHz to 1GHz									
2,Spectrum Set for PK measure: RBW=100KHz, VBW=300KHz, Sweep time=Auto, Detector: PK									
3, Result = Read level + Antenna factor + cable loss-Amp factor									
4, All the other emissions not reported were too low to read and deemed to comply with FCC limit.									

30—1000MHz Radiated emissison Test result									
EUT: 900MHz digital handheld microphone					M/N: ARG-TX900M-HH				
Power: DC 3.0V From battery									
Test date: 2015-02-06    Test site: 3m Chamber    Tested by: Store Chu									
Test mode: Tx Mode 927MHz									
Antenna polarity: Vertical									
No	Freq (MHz)	Read Level (dBuV/m)	Antenna Factor (dB/m)	Cable loss(dB)	Amp Factor (dB)	Result (dBuV/m)	Limit (dBuV/m)	Margin (dB)	Remark
1	928	50.77	22	1.29	29.28	44.78	46	1.22	PK
2	/	/							
3	/	/							
4	/	/							
5	/	/							
	/	/							
Antenna Polarity: Horizontal									
1	928	47.16	22	1.29	29.28	41.17	46	4.83	PK
2	/	/							
3	/	/							
4	/	/							
5	/	/							
	/	/							
Note:									
1,Measuring frequency from 30MHz to 1GHz									
2,Spectrum Set for PK measure: RBW=100KHz, VBW=300KHz, Sweep time=Auto, Detector: PK									
3, Result = Read level + Antenna factor + cable loss-Amp factor									
4, All the other emissions not reported were too low to read and deemed to comply with FCC limit.									

## 11 Antenna Requirement

### 11.1 Standard Requirement

An intentional radiator shall be designed to ensure that no antenna other than that furnished by the responsible party shall be used with the device. The use of a permanently attached antenna or of an antenna that uses a unique coupling to the intentional radiator shall be considered sufficient to comply with the provisions of this Section. The manufacturer may design the unit so that a broken antenna can be replaced by the user, but the use of a standard antenna jack or electrical connector is prohibited.

### 11.2 Antenna Connected Construction

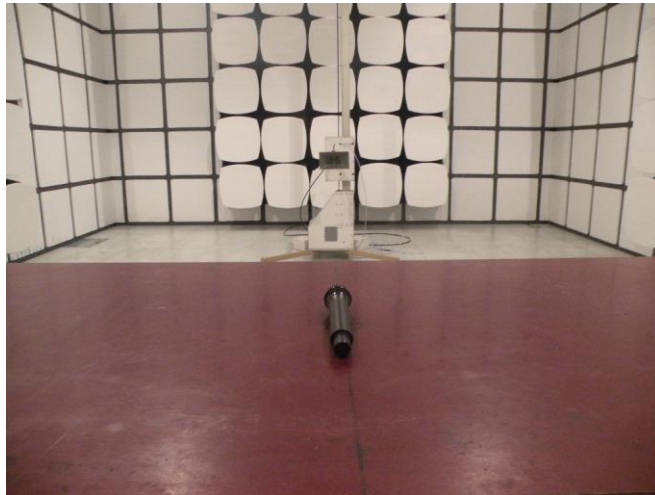
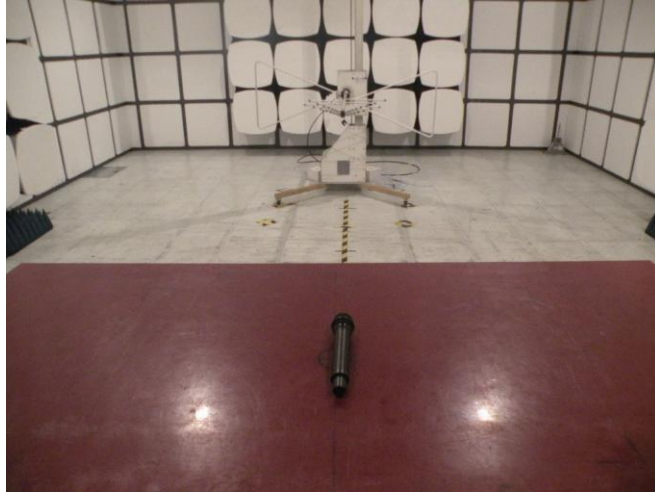
The directional gains of antenna used for transmitting is 0dBi, and de-signed with permanent attachment and no consideration of replacement. Please see EUT photo for details.

### 11.3 Result

The EUT antenna is Integrated Antenna. It comply with the standard requirement.

## 12 Photographs of Test Setup

### 12.1 Photos of Radiated emission



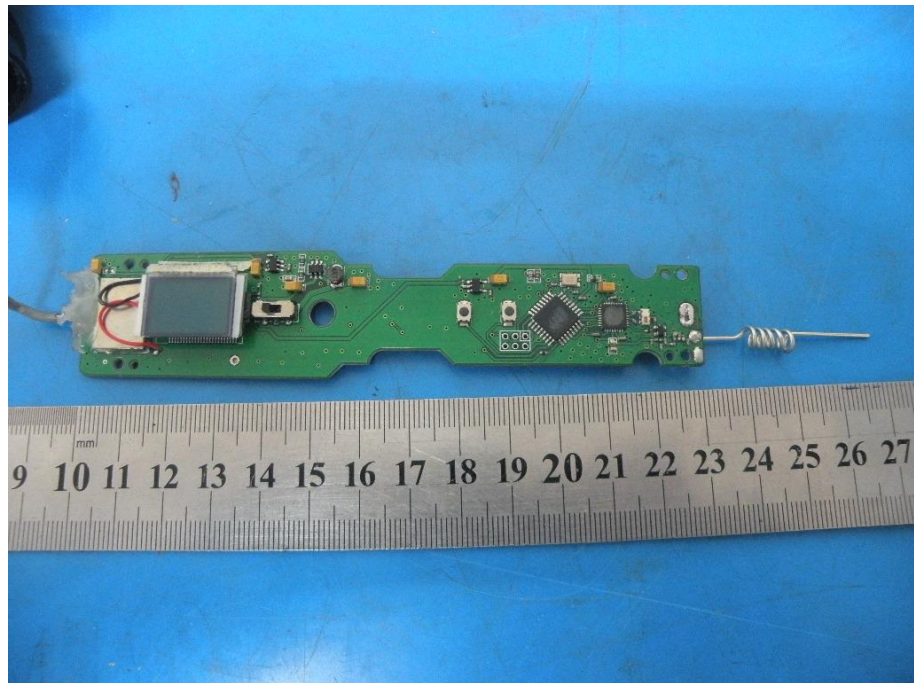
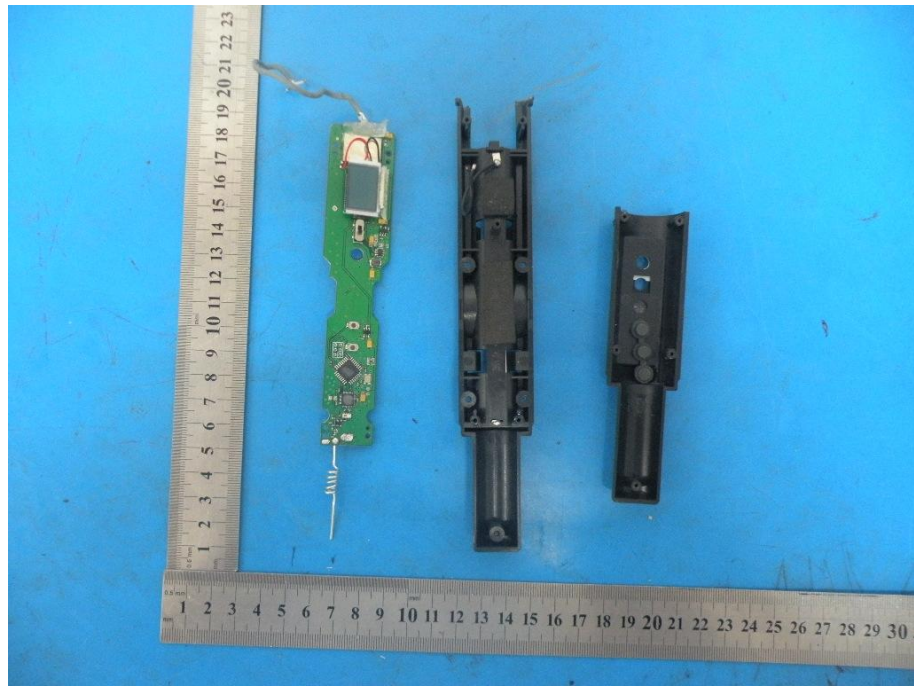
## 13 Photographs of EUT



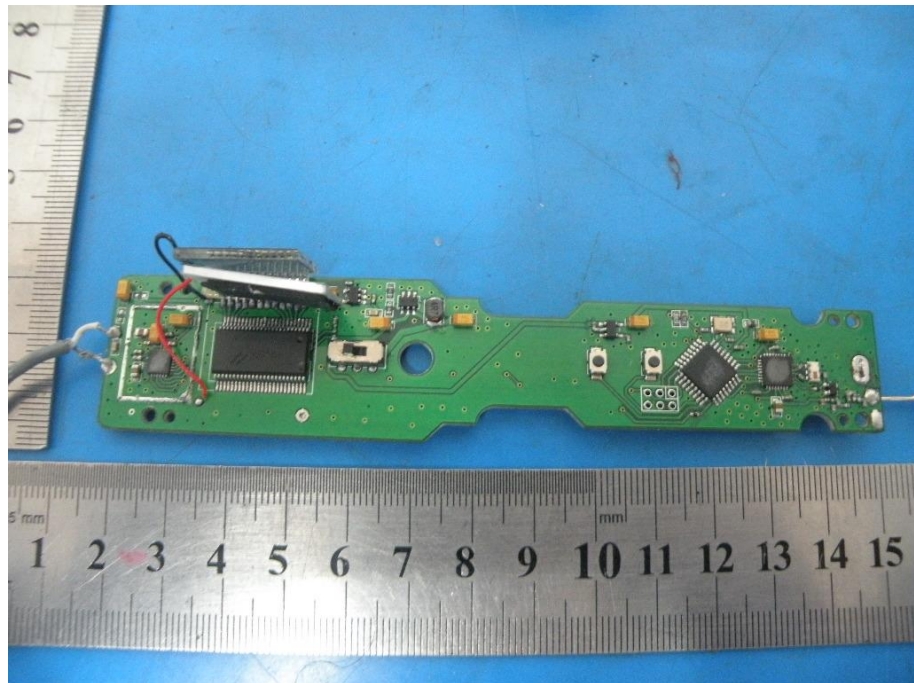
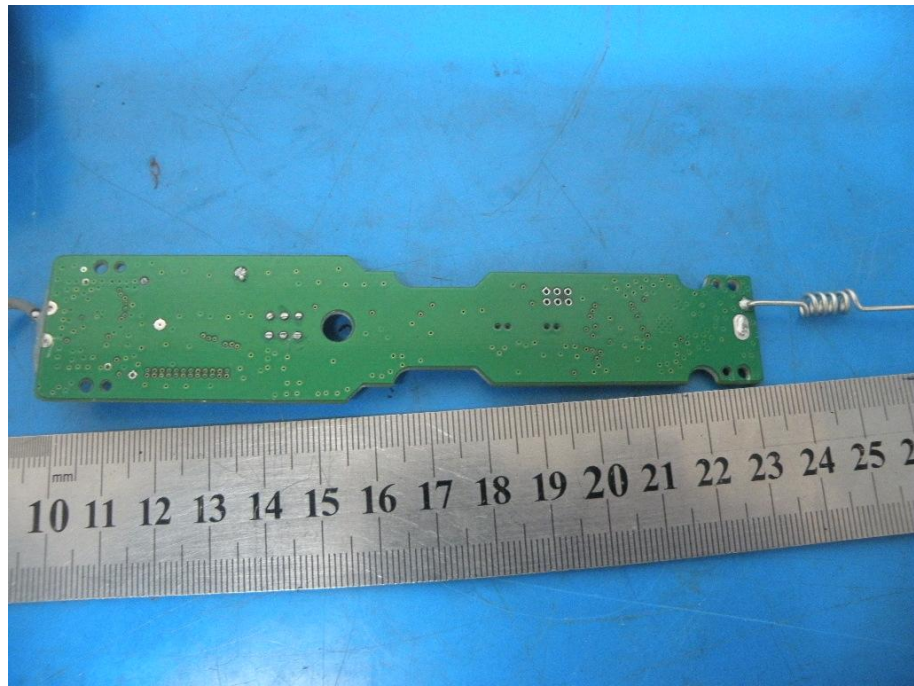






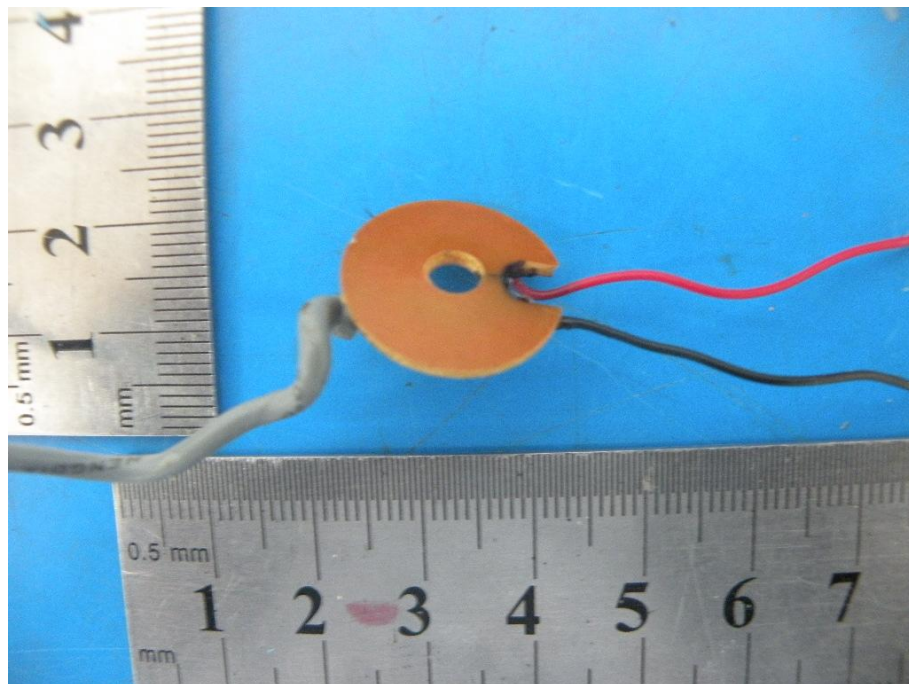
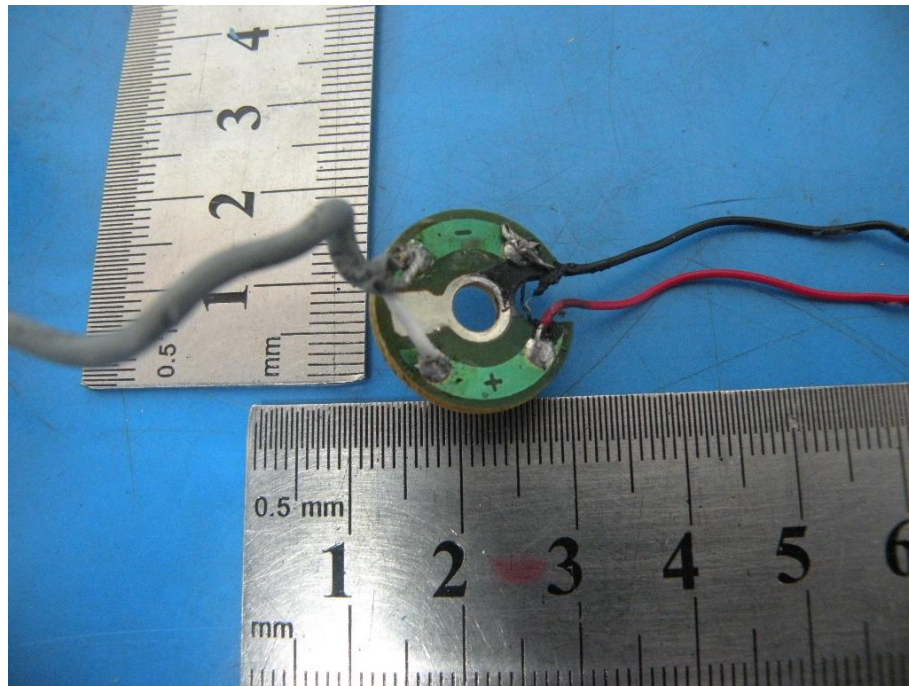


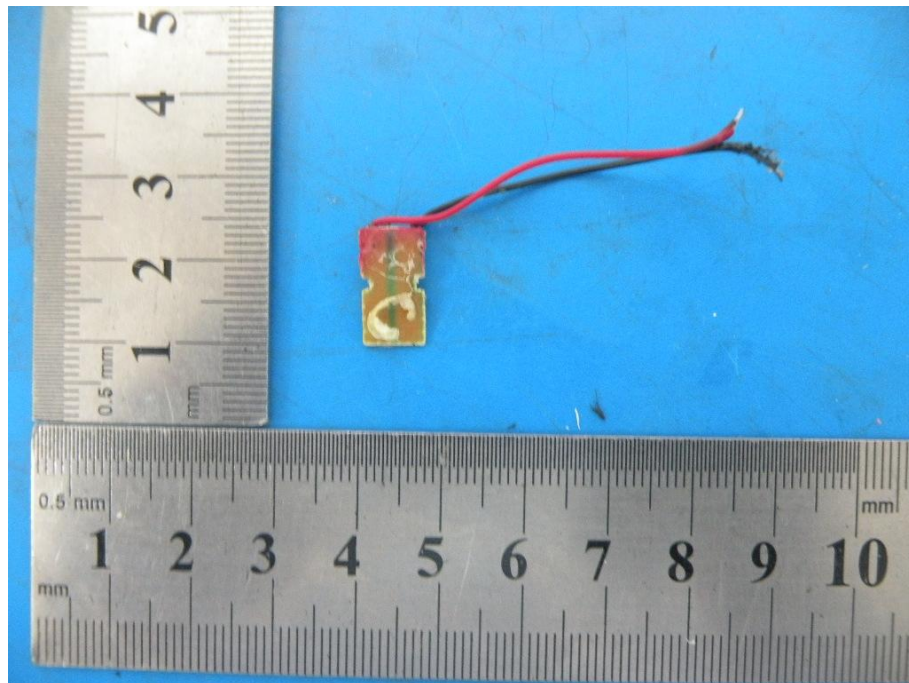
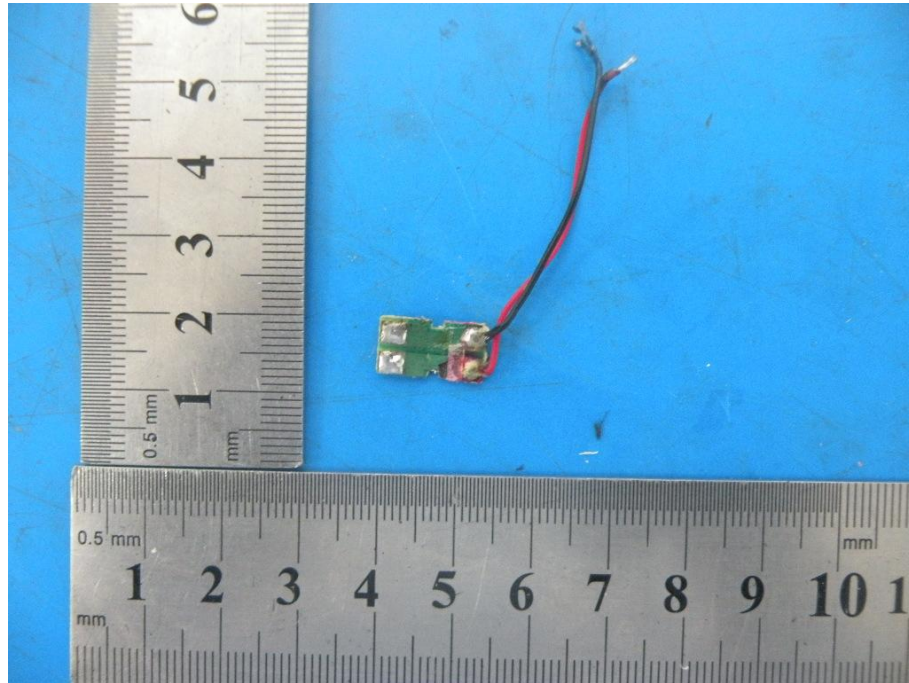












-----THE END OF REPORT-----