

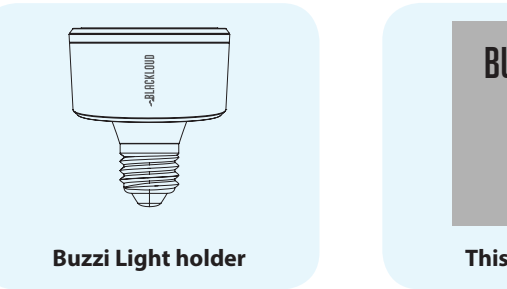
# BUZZI LIGHT

Smart Light Holder

Quick Guide



## Package Contents

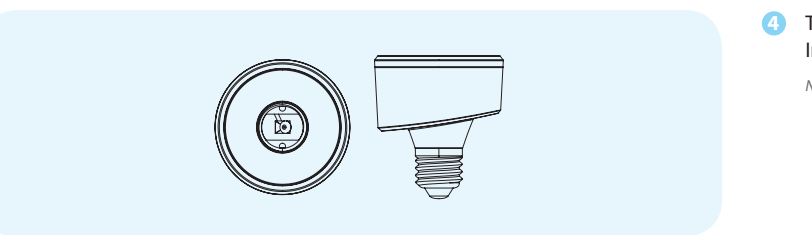


Buzzi Light holder



This quick guide

## Top/Side View

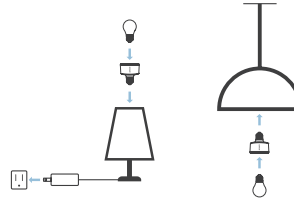


Quick Guide - 2

## Setting Up the BUZZI Light

### Hardware Setup

- 1 Make sure the light is unplugged or the power switch is turned off on the light.
- 2 Insert the BUZZI Light into a standard E26 light socket. Insert a lightbulb into the socket of the BUZZI Light.
- 3 Plug the light into a power source or turn on the power switch of the light.



- 4 The lightbulb will not light up until proper set up of the BUZZI app and Internet connection is configured.

Note: The BUZZI Light is designed for indoor lighting only.

Quick Guide - 3

### Installing and Launching the BUZZI App

- 1 On your mobile device, download and install the BUZZI app from either the Google Play Store or the iOS App Store.

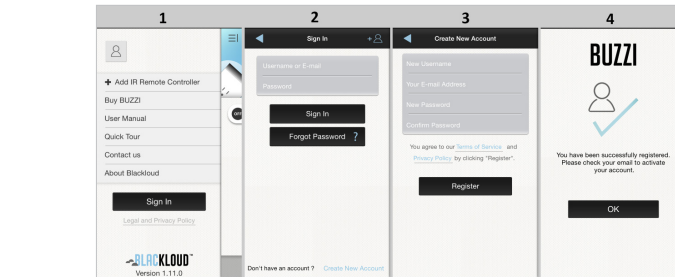


- 2 Make sure that WiFi is enabled on your mobile device, then launch the BUZZI app.
- 3 If no account settings can be found, the message **Sign in fail** will appear. You will now have the option to sign in with a BLACKLOUD account, or create an account.

Quick Guide - 4

### Signing In with a BLACKLOUD Account

- 1 At the BUZZI app Sign In menu, tap **Sign in**.
- 2 If you already have a BLACKLOUD account, you can skip the BLACKLOUD account creation and go to step (5). If you do not have a BLACKLOUD account, tap **Create New Account**.
- 3 Enter the registration information in the fields indicated, then tap **Register**. An account confirmation email will be sent to your email address. Confirm the registration in the email. In the app tap to return to the main menu.
- 4 Once you have a registered BLACKLOUD account, at the BUZZI app's main menu tap **Sign in**. Enter your username and password. Your BLACKLOUD account information will appear in the Sign In menu.



Quick Guide - 5

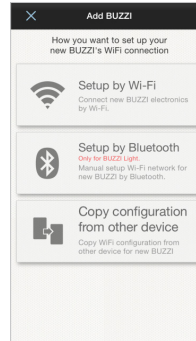
## Getting Connected

### Connecting to the BUZZI Light

There are three ways to connect the BUZZI app to the BUZZI Light:

- 1 **Setup by WiFi:** Use a WiFi connection to connect to the BUZZI light.
- 2 **Setup by Bluetooth (for iOS devices only):** Use a Bluetooth connection to connect to the BUZZI light.
- 3 **Copy configuration from other device:** Use existing settings from other BUZZI electronics to enable the light.

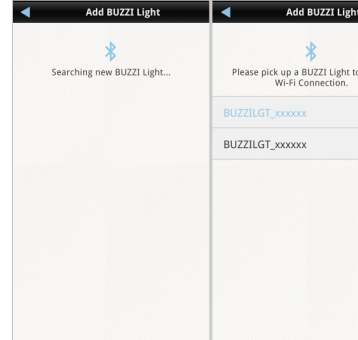
NOTE: You can tap on the main menu to access this setup page.



Quick Guide - 6

### Connecting via Bluetooth (for iOS Devices Only)

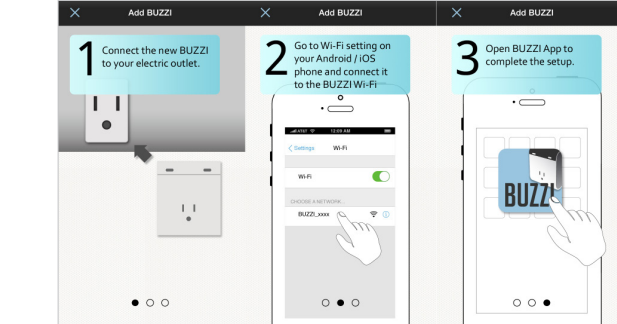
- 1 Tap **Setup by Bluetooth** on the **Add BUZZI** screen. Follow the on-screen instructions to configure BUZZI Light via Bluetooth.



Quick Guide - 7

### Connecting via WIFI

- 1 Tap **Setup by WiFi** on the **Add BUZZI** screen. Follow the onscreen instructions to configure BUZZI Light via WiFi.
- 2 For iOS devices only: Locate the BUZZI Light in your iOS device's WiFi settings and connect to it. Return to the BUZZI app.
- 3 The app will now connect to the BUZZI Light.

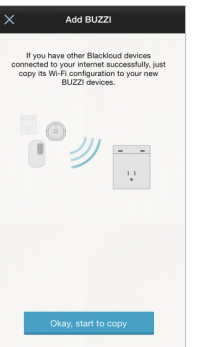


Quick Guide - 8



## Connecting via Other Device

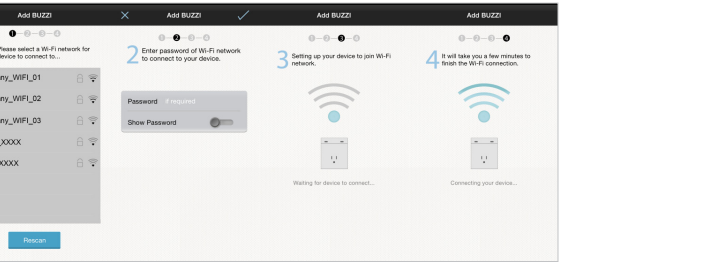
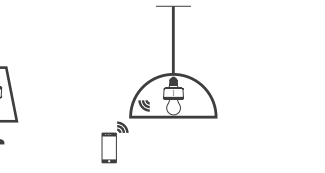
- 1 Tap **Copy Configuration from other device** on the **Add BUZZI** screen. Follow the onscreen instructions to configure BUZZI Light via other device settings.
- 2 Select the BLACKLOUD device you want to copy the connection settings from and tap **Okay**.



Quick Guide - 9

## Connecting the BUZZI Light to the Internet

- 1 WiFi Connection
  - a. Have an internet-enabled WiFi AP within range. This access point will be the wireless communication bridge between your mobile device and your BUZZI Light.
- b. Follow the instructions on the BUZZI app to connect your BUZZI Light to the WiFi AP mentioned above.

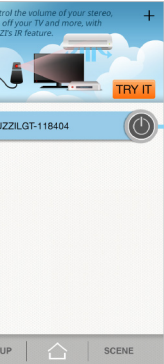


Quick Guide - 10

## Testing Your BUZZI Light

Once the BUZZI Light is successfully connected to the BUZZI app, the BUZZI Light will appear on the home screen.

- 1 Tap the power button to turn the light on. If the light turns on then you have successfully connected the BUZZI Light.

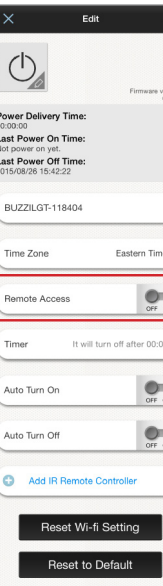


- 1 Status button - Indicates whether the BUZZI light is on or off
- 2 Power button - Turns the BUZZI light on and off

Quick Guide - 11

## Remote Access

In order to control your BUZZI Light while away from home via your mobile device's internet connection you must first enable **Remote Access**.



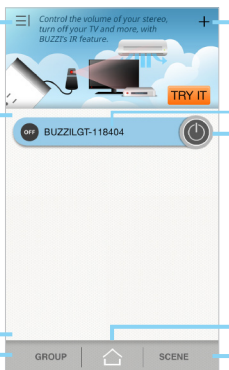
- To enable Remote Access:
- 1 Tap the **BUZZI Light** on the Home screen to access its Features menu.
  - 2 Tap the **Remote Access** Switch to enable it.
  - 3 Tap to confirm the settings.

Quick Guide - 12

## Customizing the BUZZI Light

### The BUZZI App Home Screen

The Home screen appears each time the BUZZI app is opened. It features the following menu options.



1	Main menu	Navigates to the Sign In menu
2	Device List	Lists the BUZZI devices connected
3	Group Menu	Navigates to the Group menu
4	Add Connection	Allows you to add more BUZZI devices
5	BUZZI Device	Tap to see/change details for the BUZZI device
6	Power button	Manually turns on/off the BUZZI device
7	Home Screen	Navigates to this home screen
8	Scene Menu	Navigates to the Scene menu

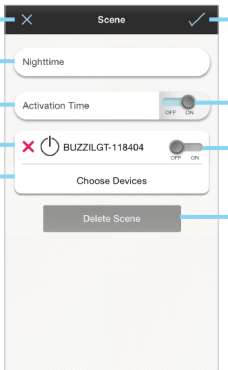
Quick Guide - 13

## The Scene Menu

A Scene allows you to manage your device on a schedule. To set up a Scene tap the **Scene** button on the Home screen to enter the Scene menu, and then tap to create a new scene.

### Setting Up a Scene

Use the Scene Setup screen to customize and create different Scenes for different daily or weekly schedules.



1	Cancel Button	Navigates to the Sign In menu
2	Scene Name	Lists the BUZZI devices connected
3	Activation Time	Navigates to the Group menu
4	Remove Device Button	Allows you to add more BUZZI devices
5	Choose Device Button	Tap to see/change details for the BUZZI device
6	Save Button	Manually turns on/off the BUZZI device
7	Activation Switch	Tap to enable/disable the activation time
8	Device Switch	Tap to include the device in this scene
9	Delete Scene	Tap to delete this Scene

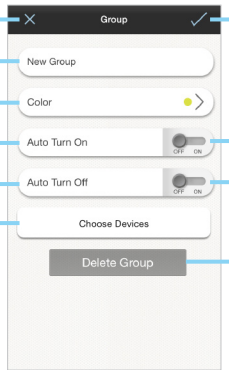
Quick Guide - 14

## The Group Menu

A Group allows you to manage multiple BUZZI devices together. To set up a Group tap the **Group** button on the Home screen, and then tap to create a new group.

### Setting Up a Group

Use the Group Setup screen to group together different BUZZI devices for easier management.



1	Cancel Button	Tap to cancel changes
2	Group Name Button	Tap to edit the name of this group
3	Color Button	Tap to change the color code of the group
4	Auto Turn On Button	Tap to set times for this group to turn on
5	Auto Turn Off Button	Tap to set times for this group to turn off
6	Choose Devices Button	Tap to choose the BUZZI devices to use for this group
7	Save Button	Tap to accept settings
8	Activate Auto On Switch	Tap to enable/disable the On time for this group
9	Activate Auto Off Switch	Tap to enable/disable the Off time for this group
10	Delete Group	Tap to delete this group

Quick Guide - 15

## Additional information

### Federal Communication Commission Interference Statement

This equipment has been tested and found to comply with the limits for a Class B digital device, pursuant to Part 15 of the FCC Rules. These limits are designed to provide reasonable protection against harmful interference in a residential installation. This equipment generates, uses and can radiate radio frequency energy and, if not installed and used in accordance with the instructions, may cause harmful interference to radio communications. However, there is no guarantee that interference will not occur in a particular installation. If this equipment does cause harmful interference to radio or television reception, which can be determined by turning the equipment off and on, the user is encouraged to try to correct the interference by one or more of the following measures:

- Reorient or relocate the receiving antenna.
- Increase the separation between the equipment and receiver.
- Connect the equipment into an outlet on a circuit different from that to which the receiver is connected.
- Consult the dealer or an experienced radio/TV technician for help.

FCC Caution: Any changes or modifications not expressly approved by the party responsible for compliance could void the user's authority to operate this equipment.

This device complies with Part 15 of the FCC Rules. Operation is subject to the following two conditions: (1) This device may not cause harmful interference, and (2) this device must accept any interference received, including interference that may cause undesired operation.

This device and its antenna(s) must not be co-located or operating in conjunction with any other antenna or transmitter.

**IMPORTANT NOTE:**

**FCC Radiation Exposure Statement:**

This equipment complies with FCC radiation exposure limits set forth for an uncontrolled environment. This equipment should be installed and operated with minimum distance 20cm between the radiator & your body. Country Code selection feature to be disabled for products marketed to the US/CANADA

Trademarks and trade names are those of their respective owners. Android is a trademark of Google Inc. iOS is a trademark or registered trademark of Cisco in the U.S. and other countries and is used under license.

**BLACKLOUD®**  
42 Corporate Park #250 Irvine, CA 92606 USA  
888-783-0378 customerservice@blackloud.com  
www.blackloud.com

Quick Guide - 16

