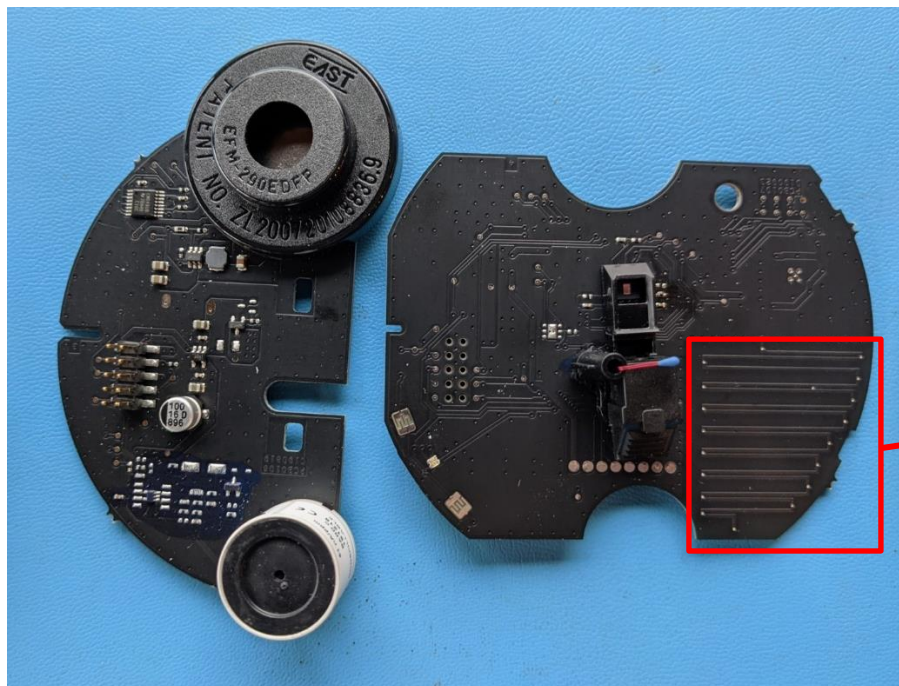


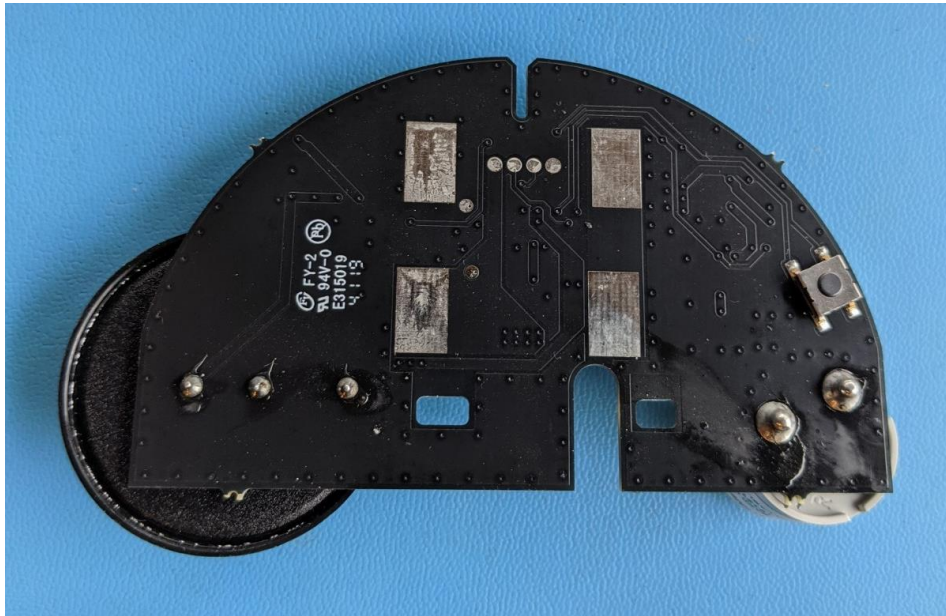
This document is intended to show detail of the internal construction of the model 51000-600 and 51000-601 Wireless Smoke, Heat and Carbon Monoxide detectors.



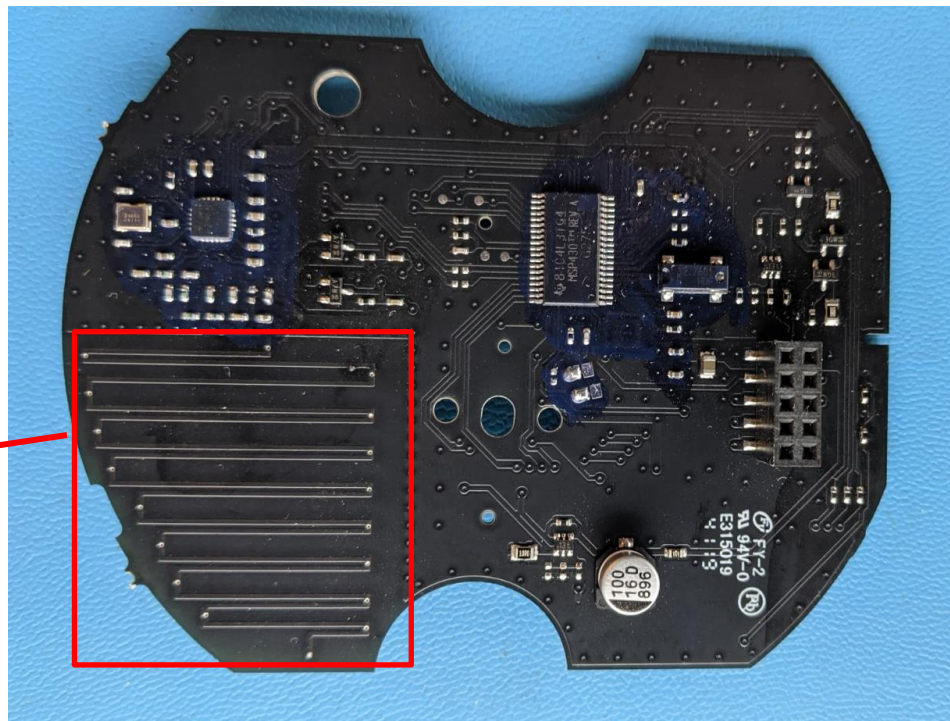
Main enclosure with battery terminals installed



Circuit board PCBAs

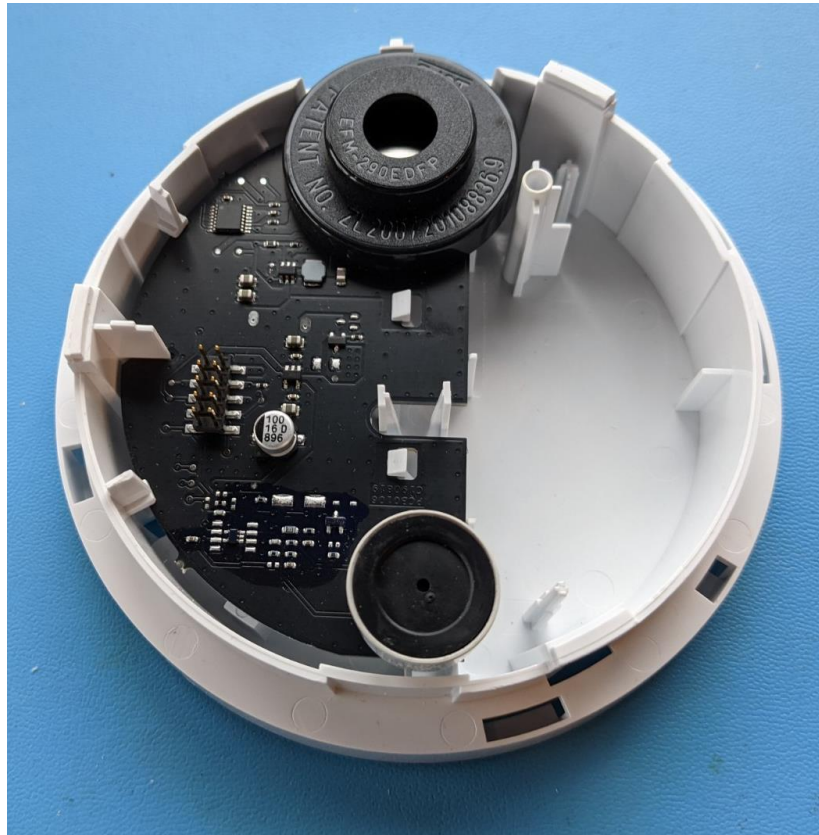


Lower PCBA underside

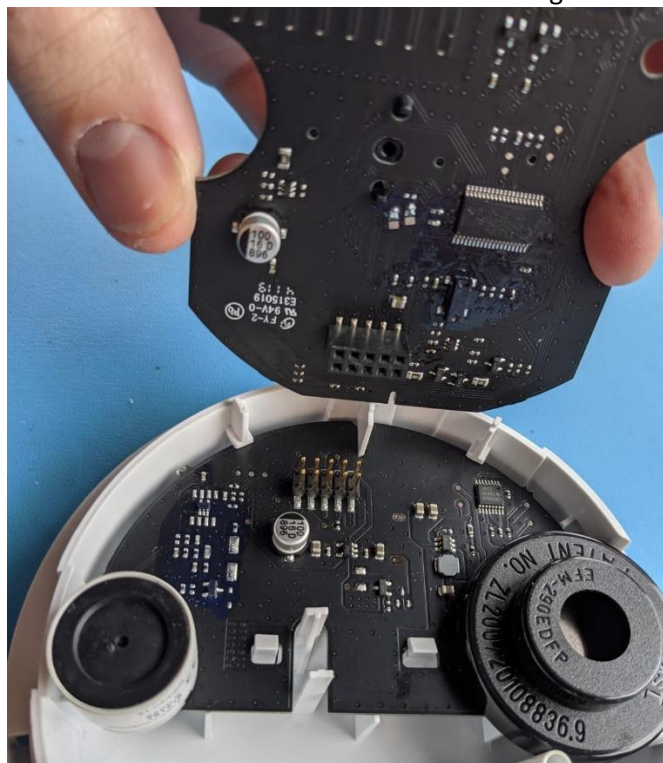


PCB
Trace
Antenna

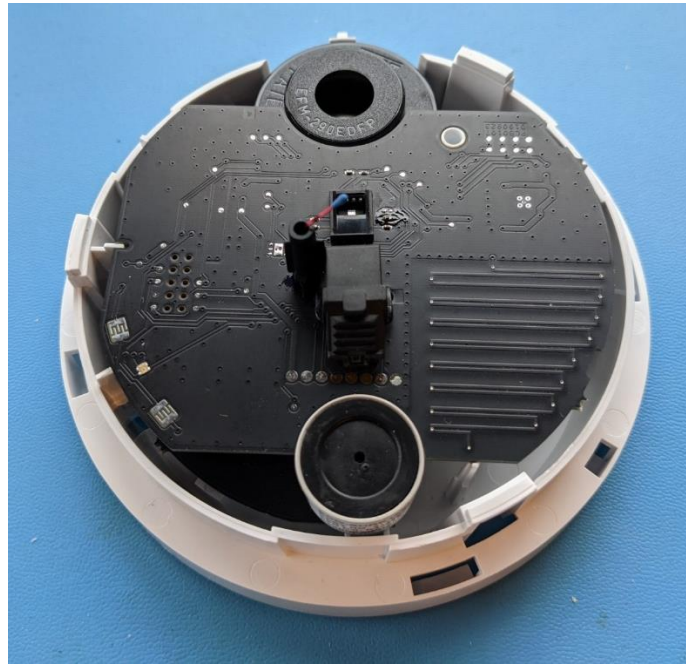
Upper PCBA underside



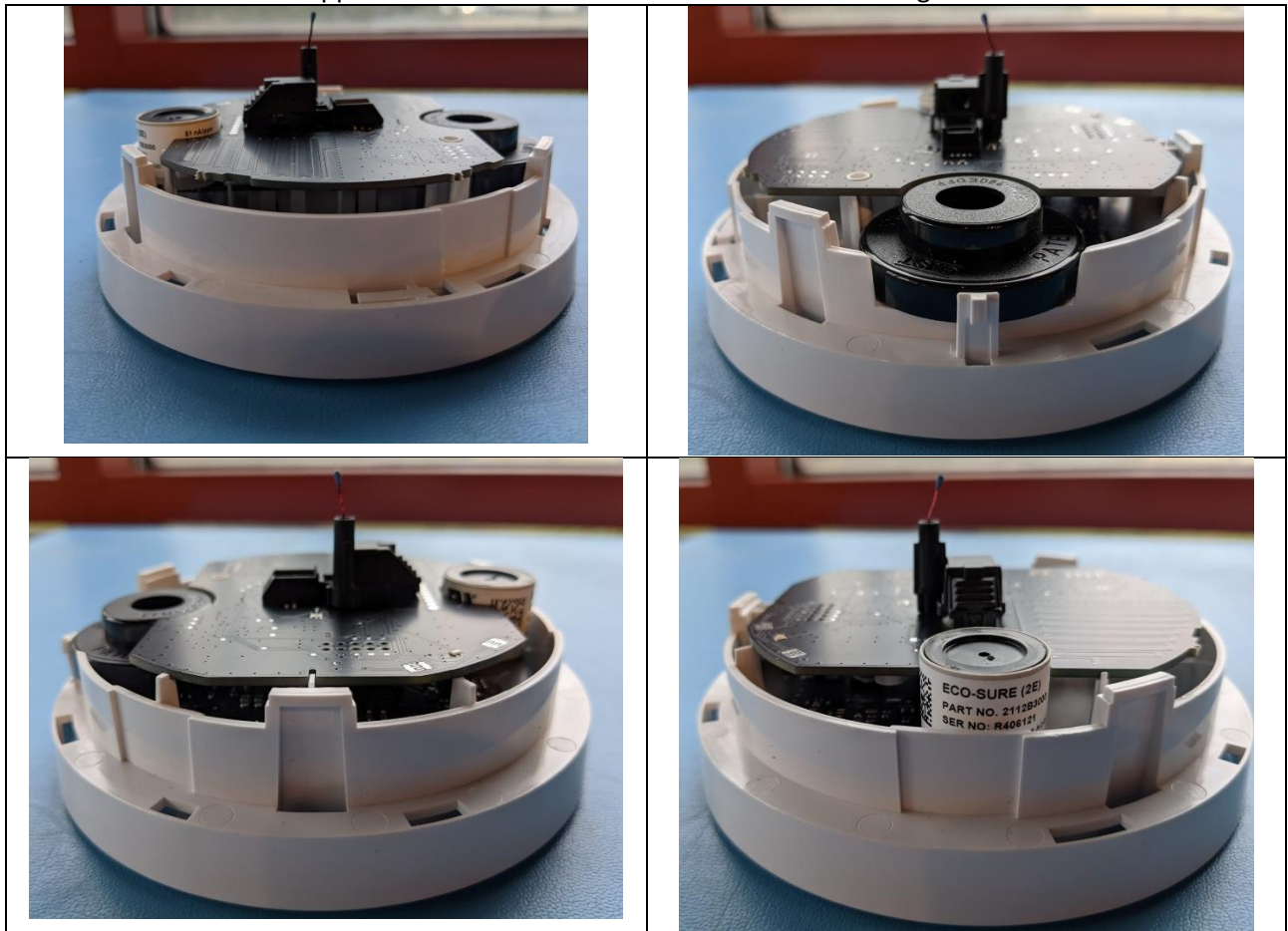
Lower PCBA installed in main housing



Upper PCBA prior to installation on lower PCBA in main housing



Upper PCBA installed on lower PCBA in main housing



Additional Views



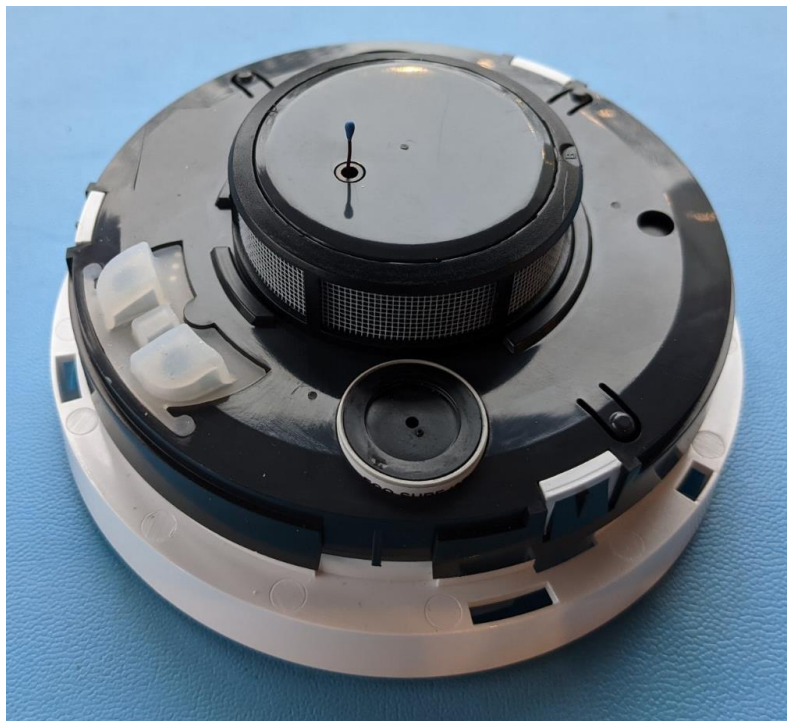
Soft plastic buttons and filter mesh



Internal plastic cover with soft plastic buttons and filter mesh



Internal cover installed over PCBAs on main enclosure soft plastic buttons and filter mesh



Alternate view of internal cover installed over PCBAs on main enclosure soft plastic buttons and filter mesh



Lid alongside main assembly



Lid assembled to detector



Assembled detector with mounting base



Complete detector attached to mounting base