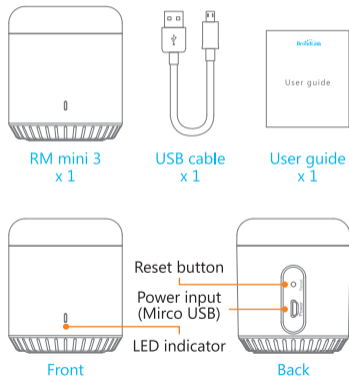
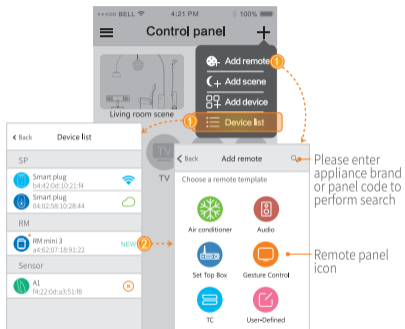


Package Content

After opening package, please check contents as below



Add Device



- NEW** New device Add new device;
- Local Connect device with the Wi-Fi smart phone connected;
 - Remote Control online device by remote;
 - Offline Device is offline and it is out of control. Please check the network connection.

Instruction of LED indicator

- **Blue indicator flashes quickly:**
Waiting for configuration (device is under factory state or reset). Under this circumstance, you can tap 'Add device' in APP and it guides you to finish the configuration.
- **Blue indicator flashes slowly:**
Network is down, power supply is down and then recovers, or during the configuration process.
- **White indicator flashes once:**
Transmitting infrared signal (it occurs when learning the infrared codes or controlling appliance).

Note :

- Do not use non-ASCII characters in Wi-Fi name or password. It may cause configuration failure. The device supports Wi-Fi of 2.4G 802.11 b/g/n only.
- Please place the device on open place. Please point remote to the top of the device during learning and we suggest the distance is less than 1m.
- Please configure the device according the user guide. If you encounter problems, please contact our authorized distributors or our support team.
- All the technical details are subjected to the actual product performance.

Hangzhou Gubei Electronics Technology Co., Ltd.

Address: Room 106, No.611 Jianghong Road, Binjiang District, Hangzhou, Zhejiang, China(310052)

RM mini 3
Universal Remote
User Guide



Facebook



Twitter



Linkedin

Hotline

400 0900 955

Website: www.ibroadlink.com
Service: support@ibroadlink.com

Step 1 Install APP

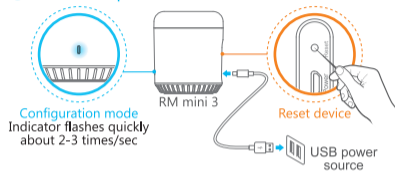


e-control

Scan the QR code on package to download and install APP, or visit <http://upgrade.broadlink.com.cn/getapp/> from web browser on phone to download APP manually.

Step 2 User Guide

① Connect to power



Configuration mode
Indicator flashes quickly
about 2-3 times/sec

② Connect smart phone to Wi-Fi

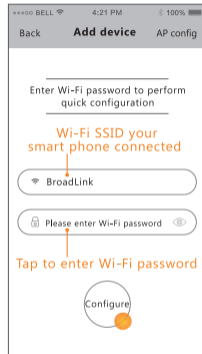


③ Open the APP



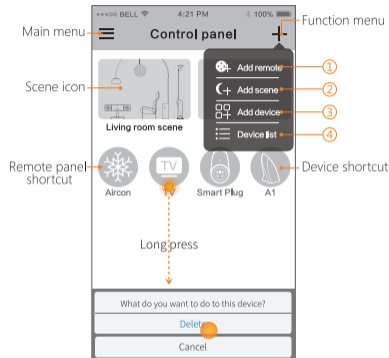
- Connect to power and set RM mini 3 to config mode (indicator flashes quickly).
- Please choose the proper adapter which output power is 5V DC and $\geq 500\text{mA}$ for RM mini 3.
- Please place the device on open place. Please point the remote to the top of the device during learning, and we suggest the distance from the device to remote should be less than 1m.

Step 3 Add device



- If configuration failed, please reset the device and re-configure
- **Reset device:** Long press on reset button with a slim needle for more than 5s until the indicator flashes quickly.

Step 4 Control panel



- ① Tap to add remote control panel;
- ② Tap to add scene;
- ③ Tap to add device;
- ④ Tap to view added devices.

FCC NOTE:

Any Changes or modifications not expressly approved by the party responsible for compliance could void the user's authority to operate the equipment.

This device complies with part 15 of the FCC Rules. Operation is subject to the following two conditions: (1) This device may not cause harmful interference, and (2) this device must accept any interference received, including interference that may cause undesired operation.

FCC Radiation Exposure Statement:

This equipment complies with FCC radiation exposure limits set forth for an uncontrolled environment. This equipment should be installed and operated with minimum distance 20cm between the radiator& your body.