

## Package Content



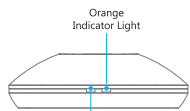
RM



AC/DC Adapter



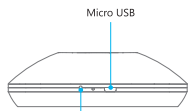
USB Cable



Orange Indicator Light

Blue Wi-Fi Light

Front



Micro USB

Reset

Right Side

## FAQ

### ❓ Instruction of Wi-Fi indicator

- ❑ Indicator flashes quickly  
It means device is in factory state and you can configure it via config page of e-Control.
- ❑ Indicator flashes from quickly to slowly and at last off (during configuration).  
It means configuration is successful.
- ❑ Indicator flashes slowly  
It means device cannot connect to Wi-Fi. Please check the network connection or re-configure the device.

### ❓ Functions of universal remote

- ❑ Remote control, button timer ( long press ON/OFF button to set timer ) and combo control.

### ❓ What is scene?

- ❑ Scene likes a button which perform several actions of several appliances. You can add several remote commands into a scene and once you tap the scene, all the remote commands will be performed.

### ❓ How to learn?

- ❑ Tap the button with black font and it will pop-up a prompt box 'Waiting for button learning'. Meanwhile, orange indicator of device will be on. Press ON/OFF button on appliance remote towards device. If the orange indicator turns to off state and APP hints successful message, the code learning succeeds. Tap the learned button on APP and the orange indicator flashes once. It means the learned command has been sent.

### ❓ How to perform air conditioner learning?

- ❑ AC codes is more complicated than TV code. One button will trigger a string of code including temperature, mode, fan, and so on. As a result, defined scene button such as cooling, heating, auto is similar to ON button. For instance, if you want to learn the code string of ON, cooling and 22 C. You should follow the step below.
  1. Adjust AC to 'cooling, 22 C' with AC remote.
  2. Turn off AC.
  3. Tap a button on remote panel (APP) to enter learning state.
  4. Press 'ON' button of AC remote to finish learning. For the 'OFF' button, it can be learned on any state (You should learn 'ON' and 'OFF' separately).We suggest you to have a trial to comprehend this part.

### ■ NOTE

- Do not use non-ASCII characters in Wi-Fi name or password. It may cause configuration failure. The device supports Wi-Fi of 2.4G 802.11 b/g/n only.
- Please place the device on open place. Please point remote to the top of the device during learning we suggest the distance is less than 1m.
- Please configure the device according to the user guide. If you encounter problems, please contact our authorized distributors or our support team.

### ■ FCC Radiation Exposure Statement

FCC ID: 2ACDZRMPRO

This device complies with part 15 of the FCC Rules. Operation is subject to the following two conditions:

- This device may not cause harmful interference, and
- This device must accept any interference received, including interference that may cause undesired operation.



## Universal Remote

Quick User Guide

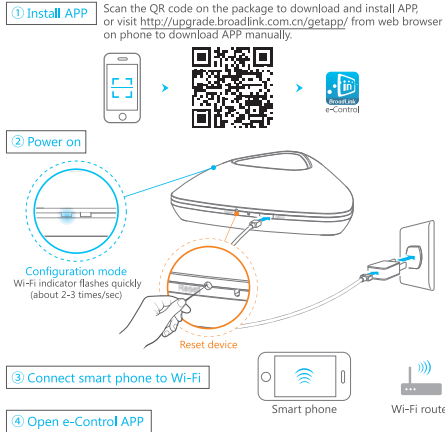
Hotline

+86 400 0900 955

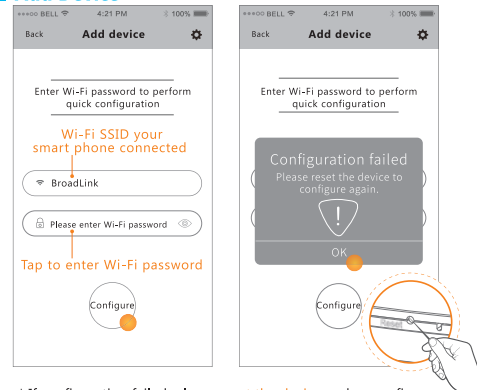
Website: [www.ibroadlink.com](http://www.ibroadlink.com)  
Service: [support@ibroadlink.com](mailto:support@ibroadlink.com)

Hangzhou Gubei Electronics Technology Co., Ltd.  
Add: Room 106, Building 1, No. 611 Jianghong Road,  
Binjiang, Hangzhou, Zhejiang 310052, China

## Usage Scenario



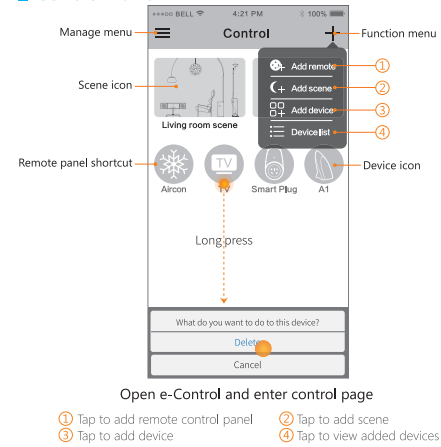
## Add Device



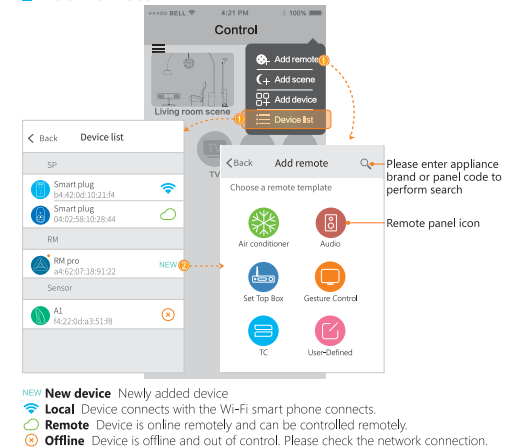
\* If configuration failed, please **reset the device** and re-configure

Reset device: Long press on reset button with a slim needle for about 6s until indicator flashes quickly.

## Control Panel



## Add Remote



**FCC Warning**

This device complies with Part 15 of the FCC Rules. Operation is subject to the following two conditions:

(1) This device may not cause harmful interference, and (2) this device must accept any interference received, including interference that may cause undesired operation.

NOTE 1: Any changes or modifications to this unit not expressly approved by the party responsible for compliance could void the user's authority to operate the equipment.

To maintain compliance with FCC RF exposure requirements, use accessories that maintain a 20cm separation distance between the user's body.