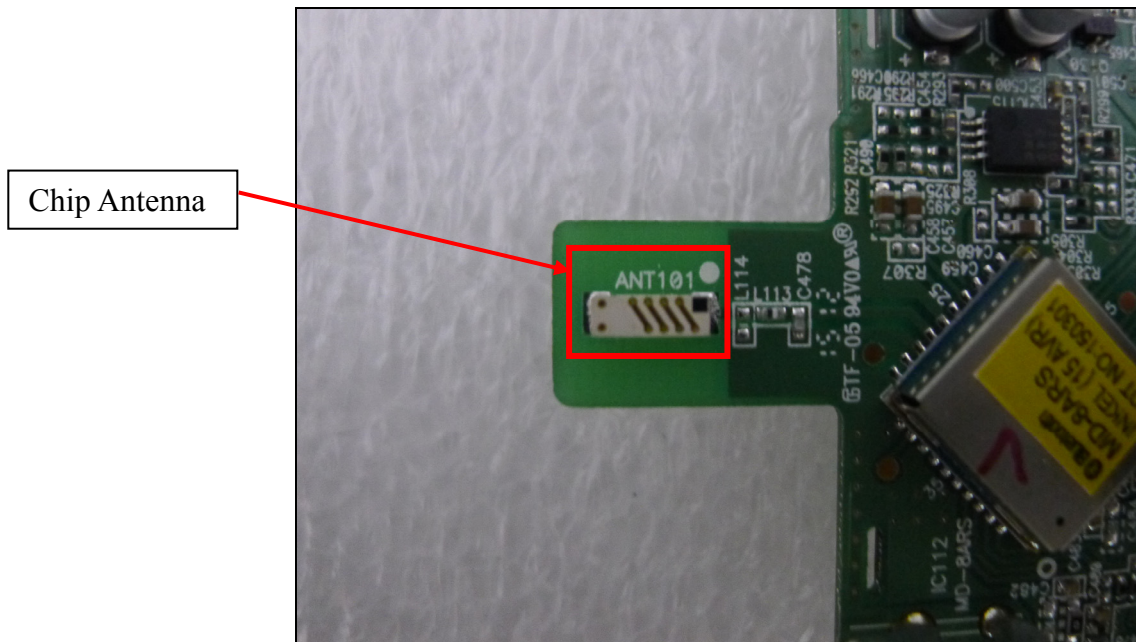
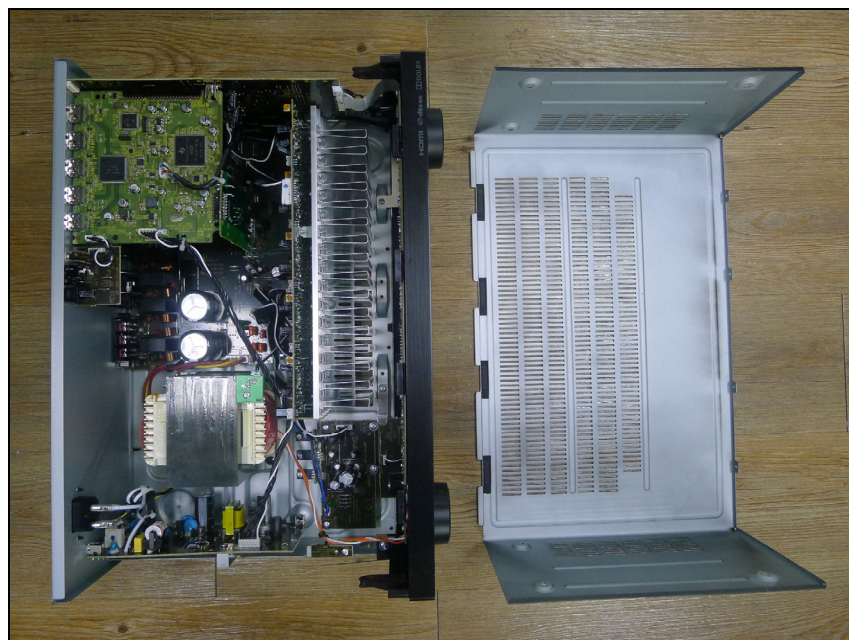


# ***Internal photos of EUT***

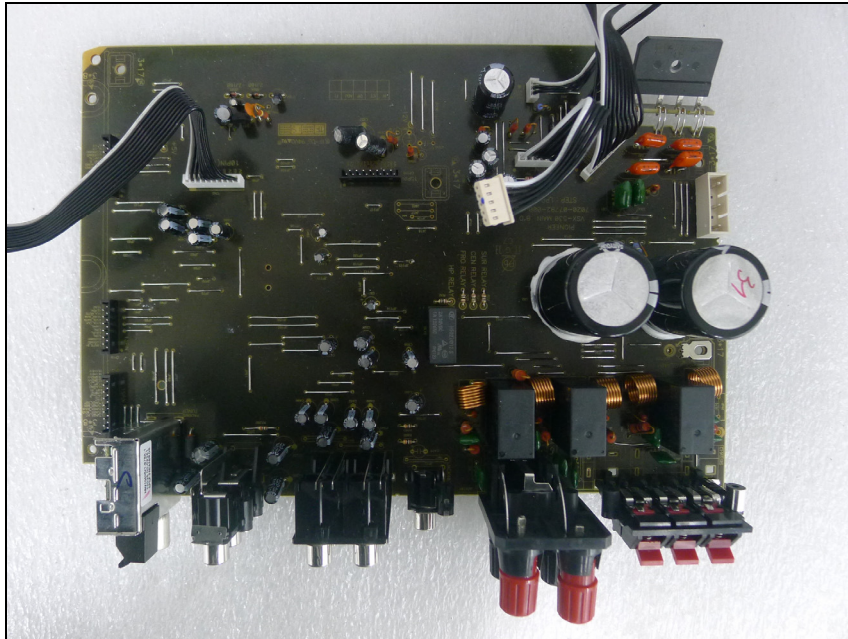
### *Antenna view of EUT*



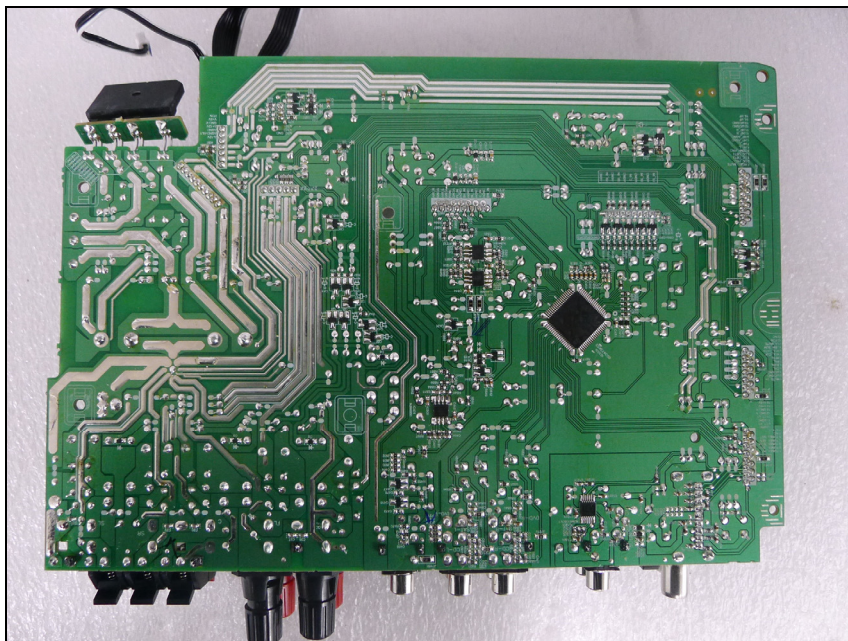
### *Internal view of EUT*



*Top view of Main PCB*

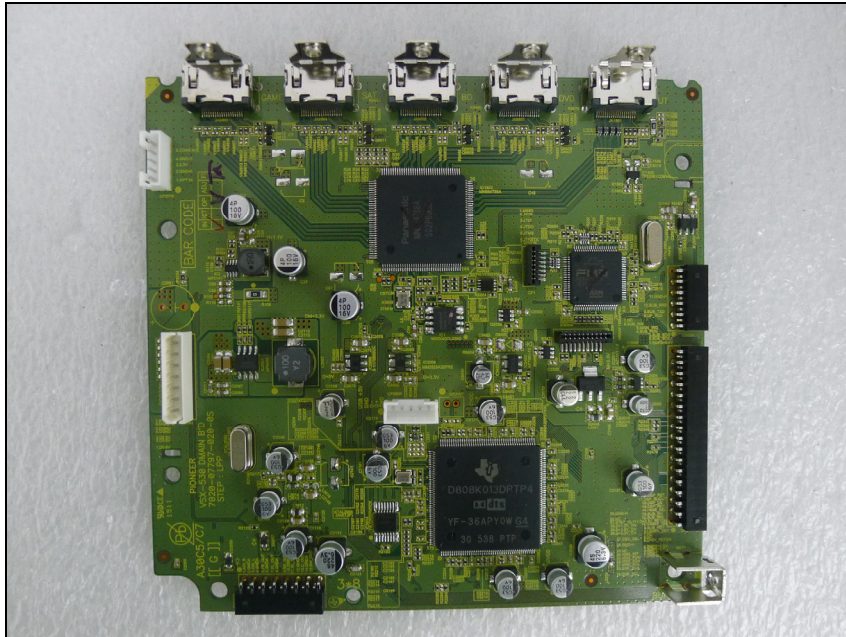


*Bottom view of Main PCB*

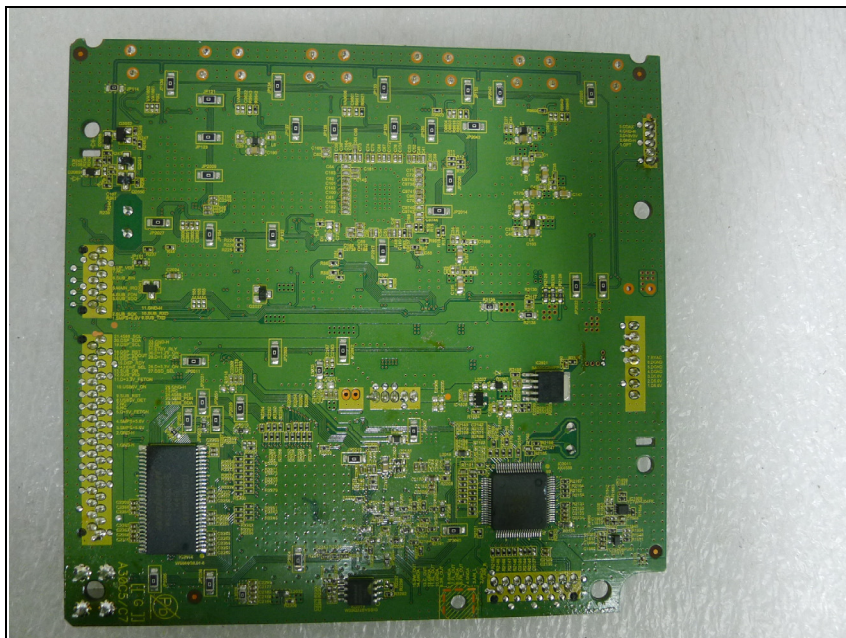




*Top view of DMain PCB*



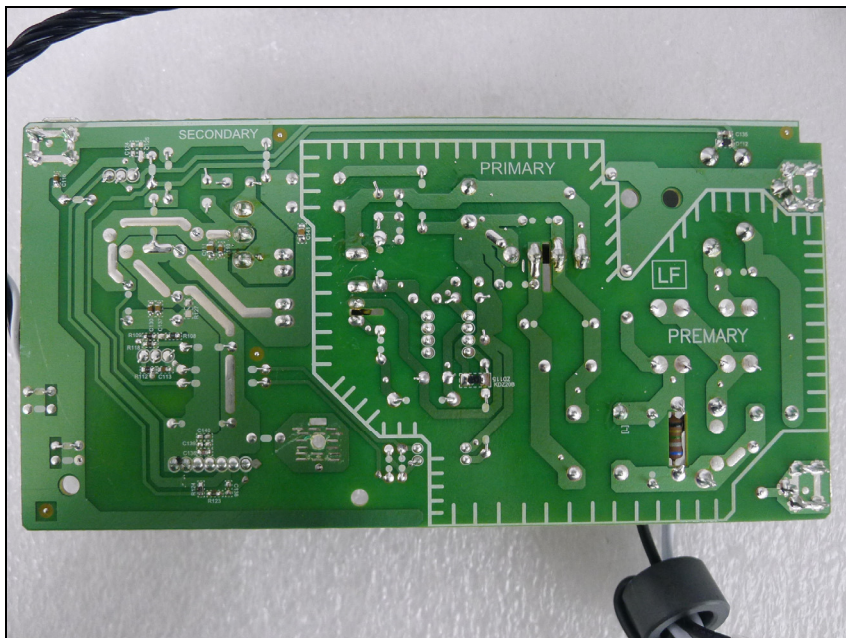
*Bottom view of DMain PCB*



*Top view of Power PCB*

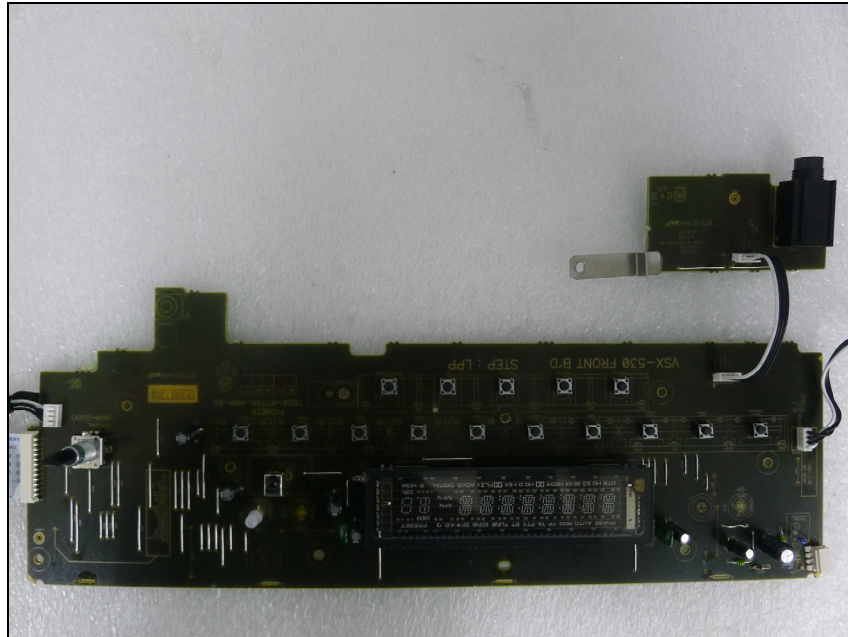


*Bottom view of Power PCB*

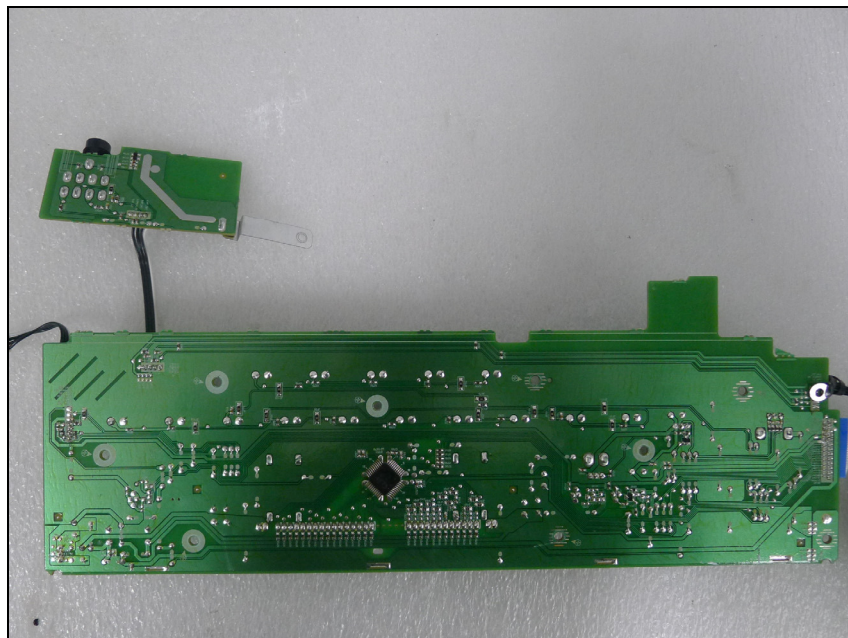




***Top view of Front PCB***



***Bottom view of Front PCB***



***Top view of DMain Connector PCB***



***Bottom view of DMain Connector PCB***

