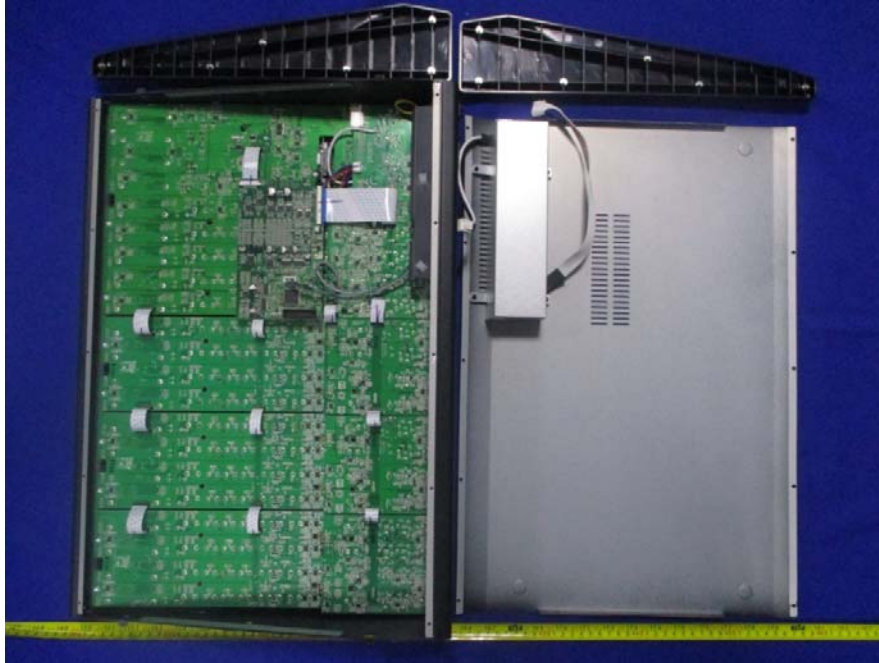


EXHIBIT C - EUT INTERNAL PHOTOGRAPHS

EUT – Case Open View



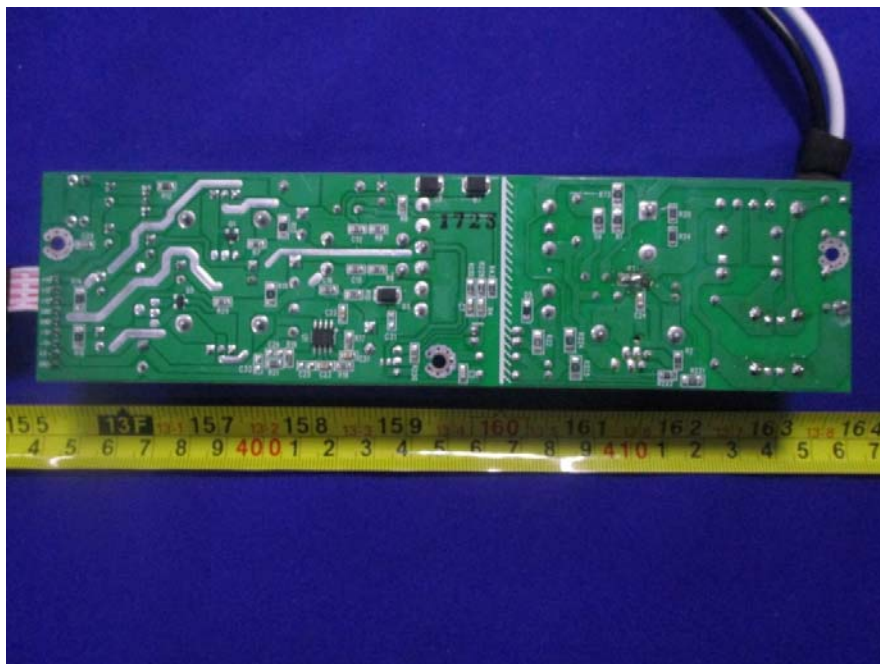
EUT – Power Source View



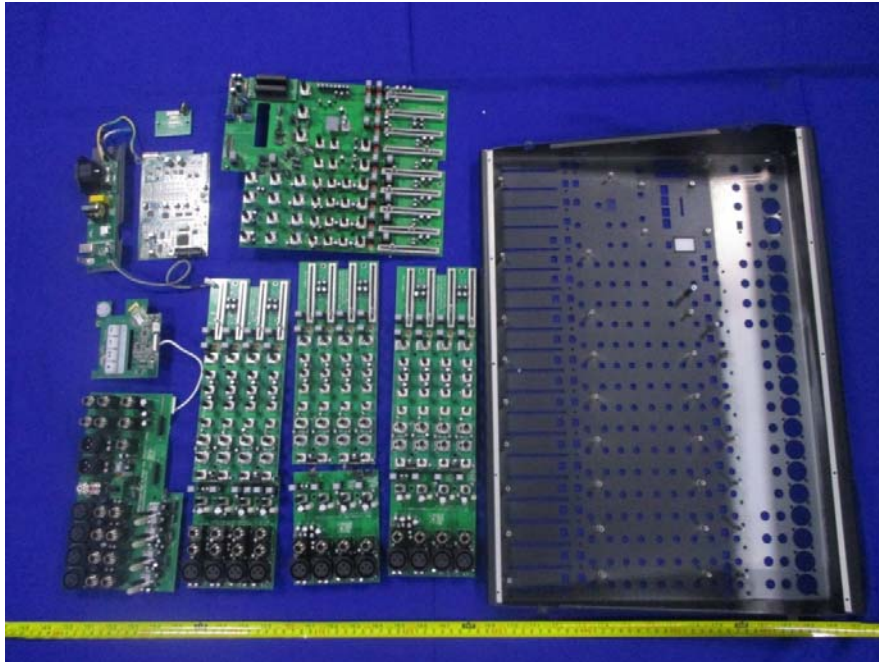
EUT – Power Source PCB Top View



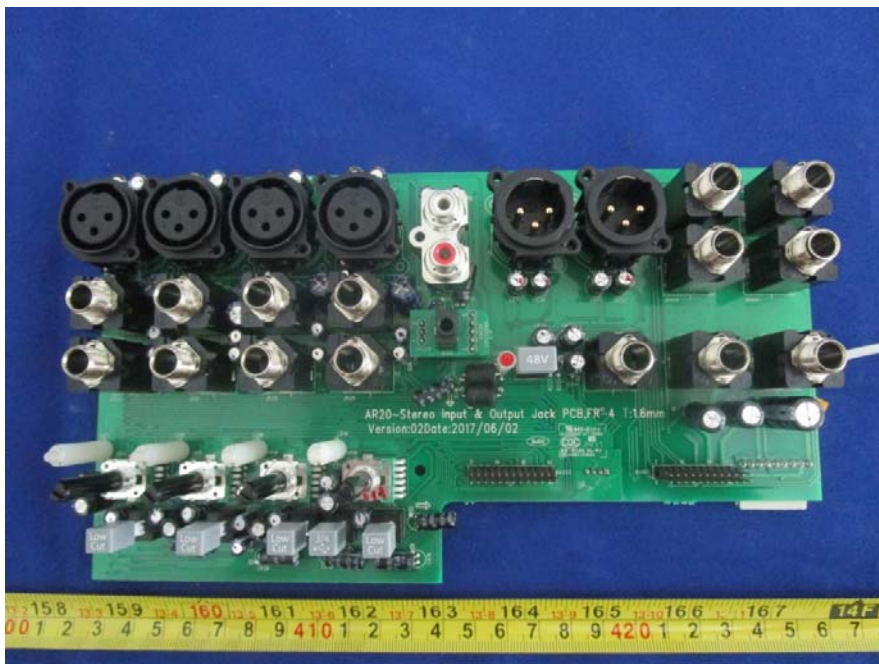
EUT – Power Source PCB Bottom View



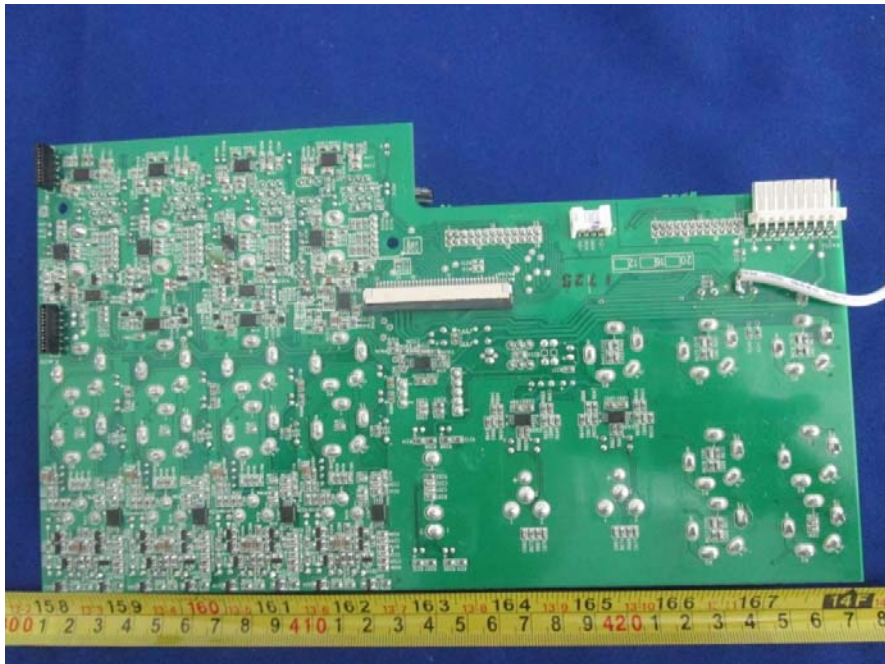
EUT – Uncover View



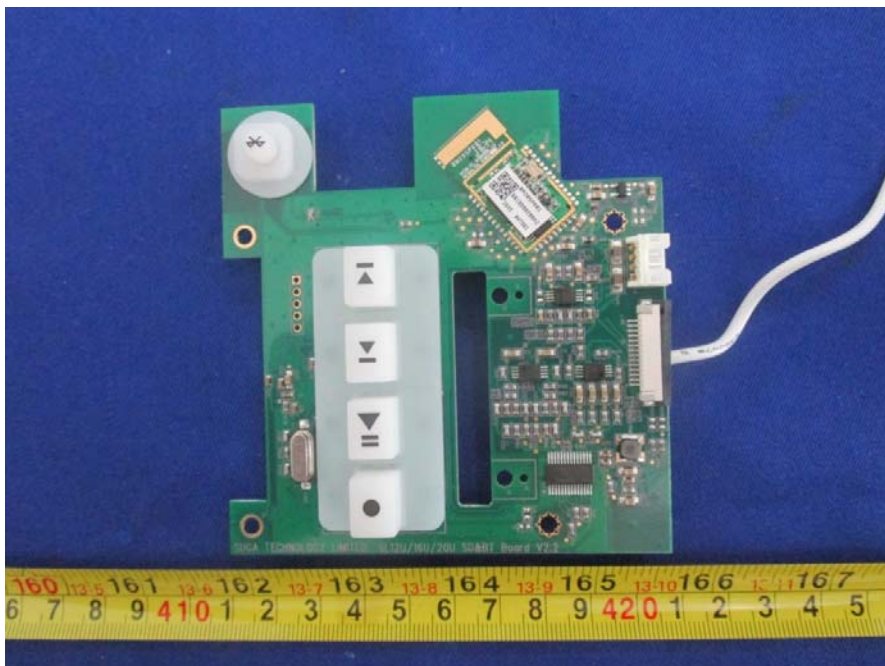
EUT – AR20-Stereo Input & Output Jack PCB Top View



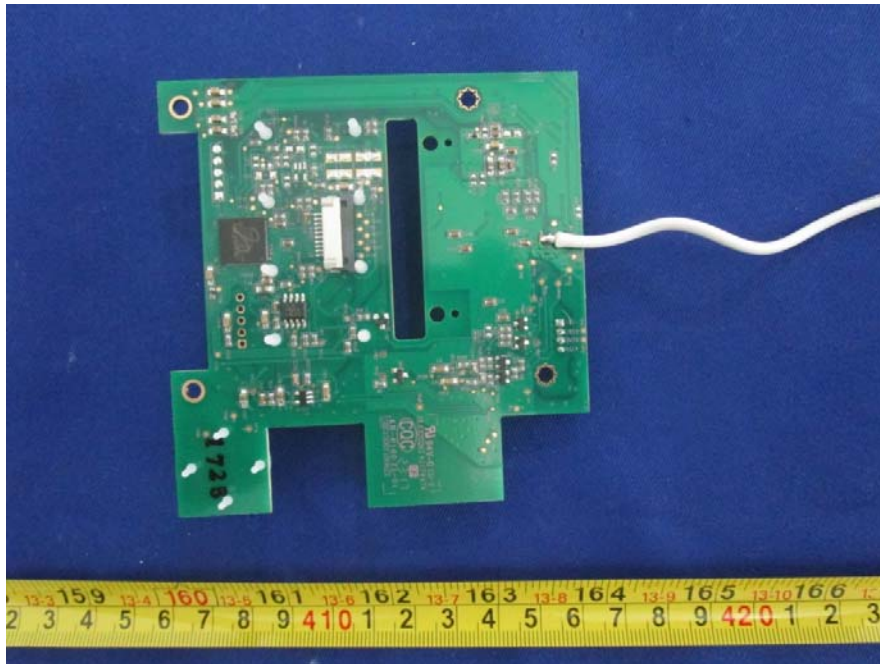
EUT – AR20-Stereo Input & Output Jack PCB Bottom View



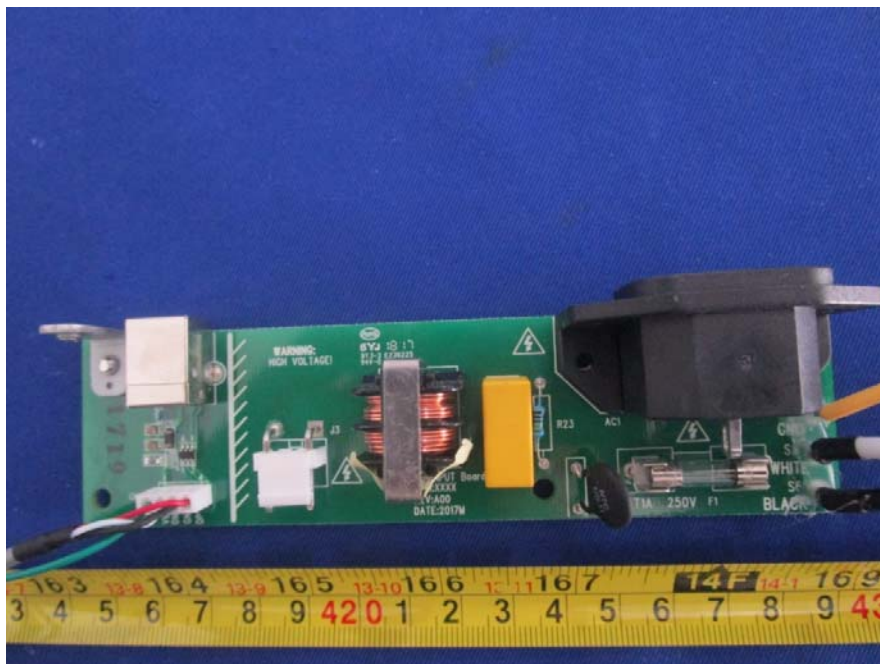
EUT – SL 12U16U20U SD&BT Board Top View



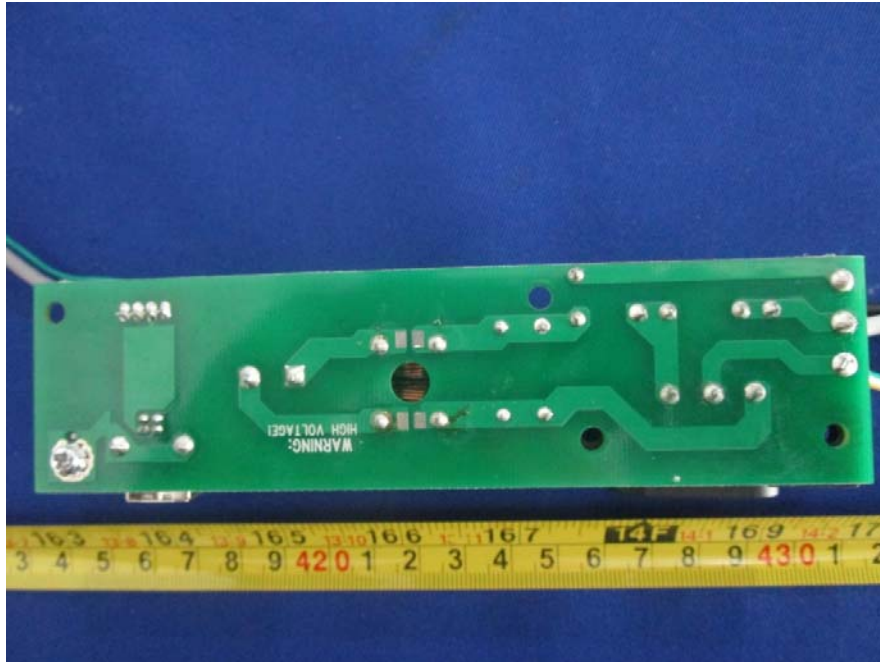
EUT – SL 12U16U20U SD&BT Board Bottom View



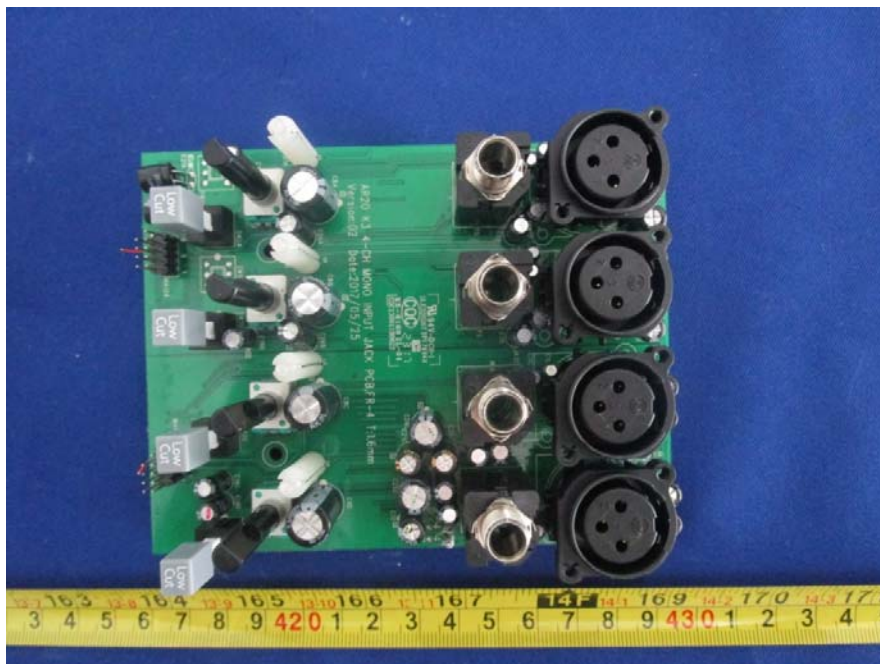
EUT – AC INPUT Board Top View



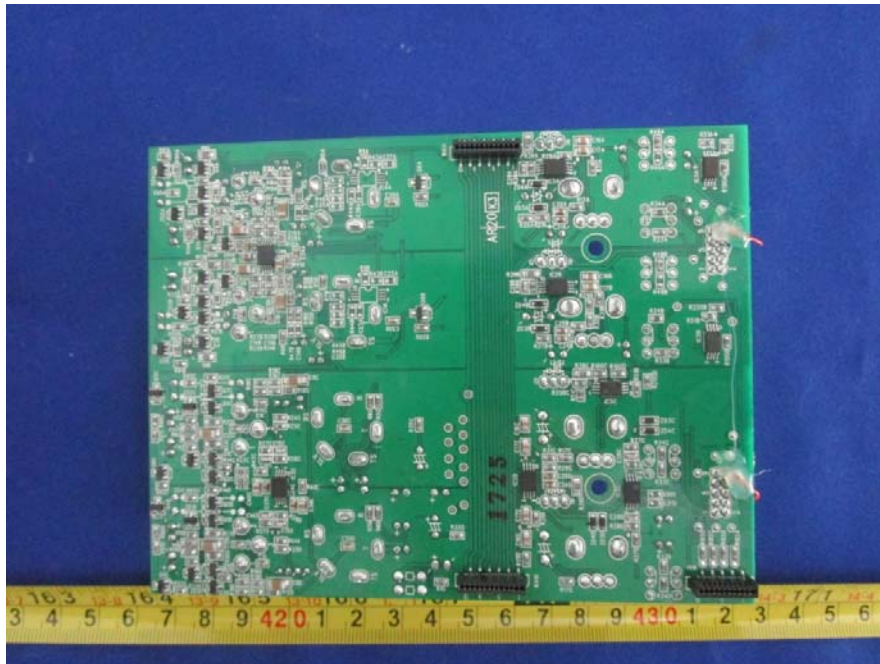
EUT – AC INPUT Board Bottom View



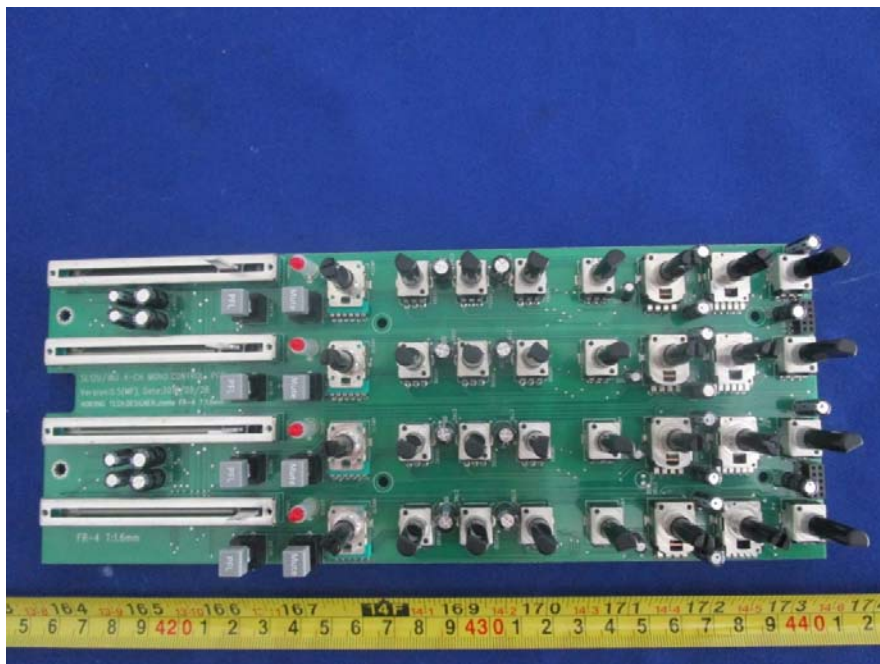
EUT – AR20 K3 4-CH MONO INPUT LACK PCB Top View



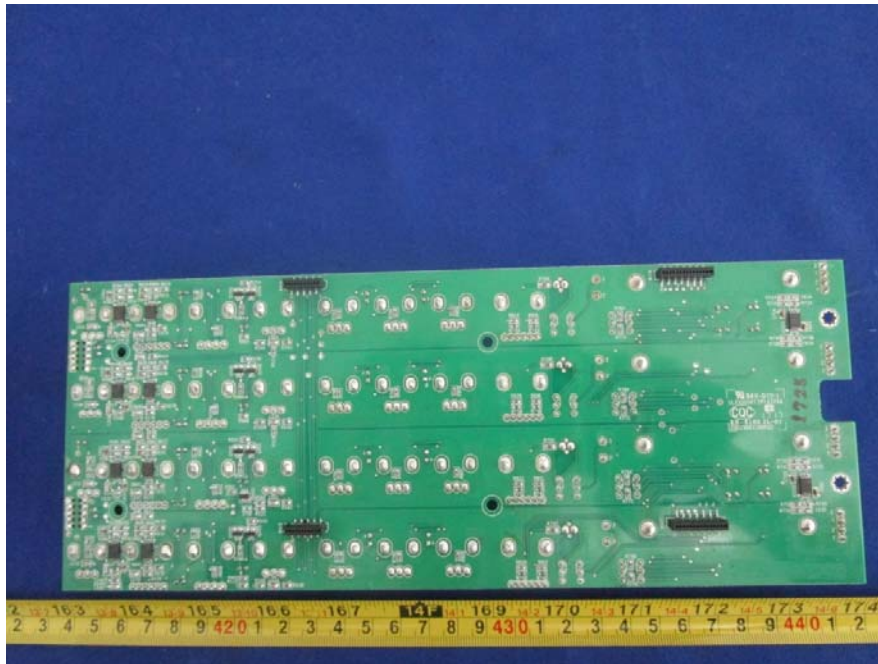
EUT – AR20 K3 4-CH MONO INPUT LACK PCB Bottom View



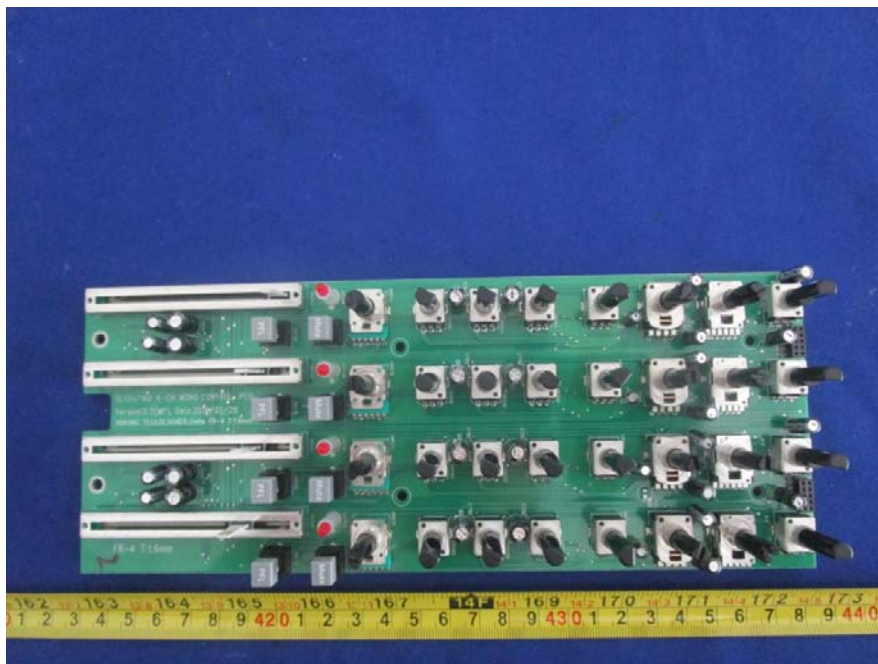
EUT – SL 12U16U 4-CH MONO CONTROL PCB1 Top View



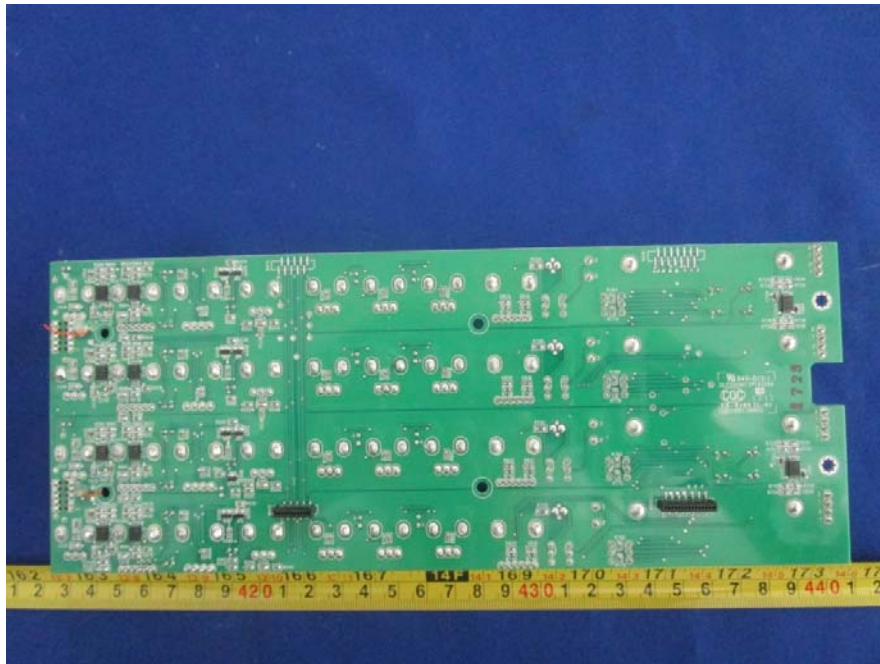
EUT – SL 12U16U 4-CH MONO CONTROL PCB1 Bottom View



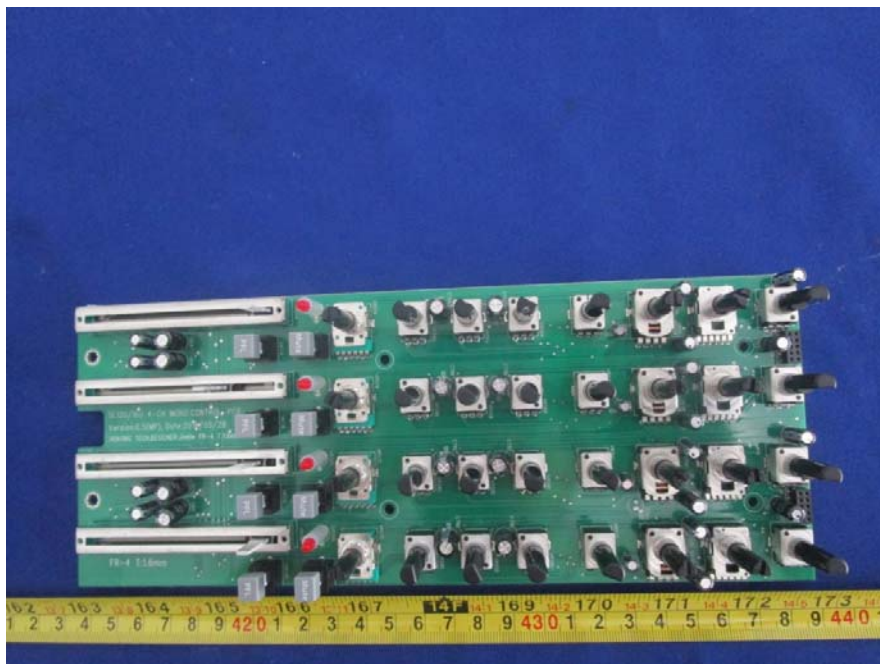
EUT – SL 12U16U 4-CH MONO CONTROL PCB2 Top View



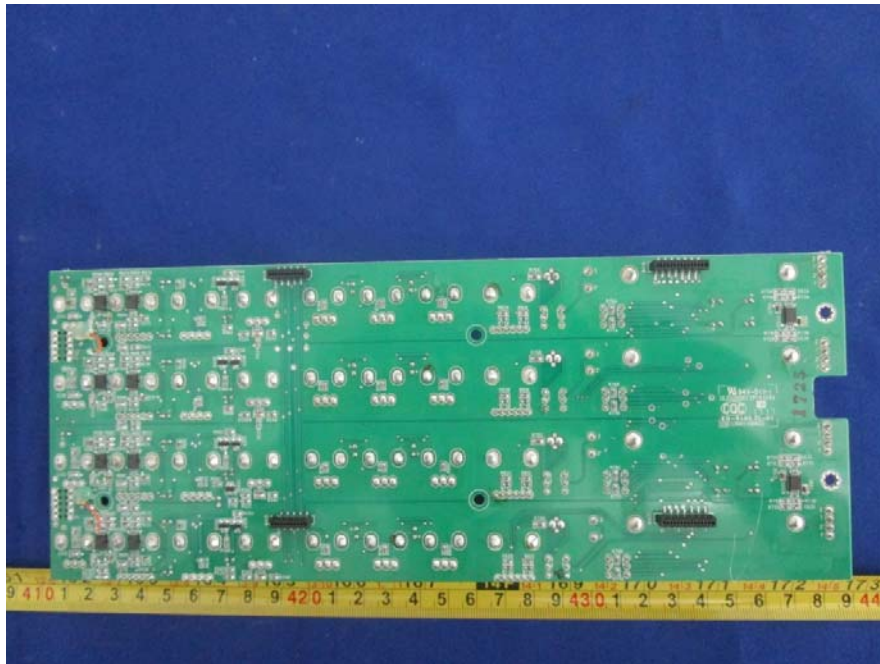
EUT – SL 12U16U 4-CH MONO CONTROL PCB2 Bottom View



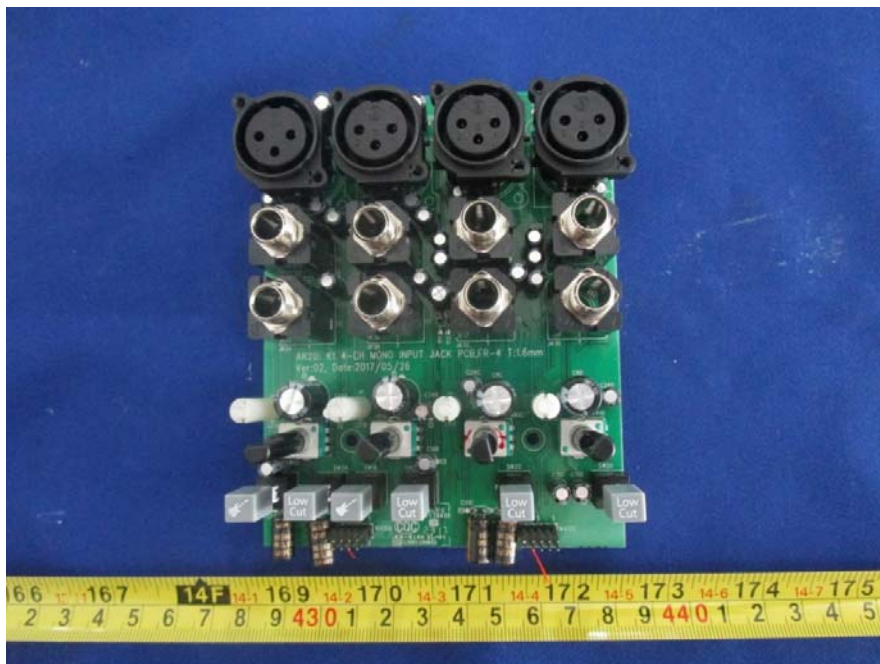
EUT – SL 12U16U 4-CH MONO CONTROL PCB3 Top View



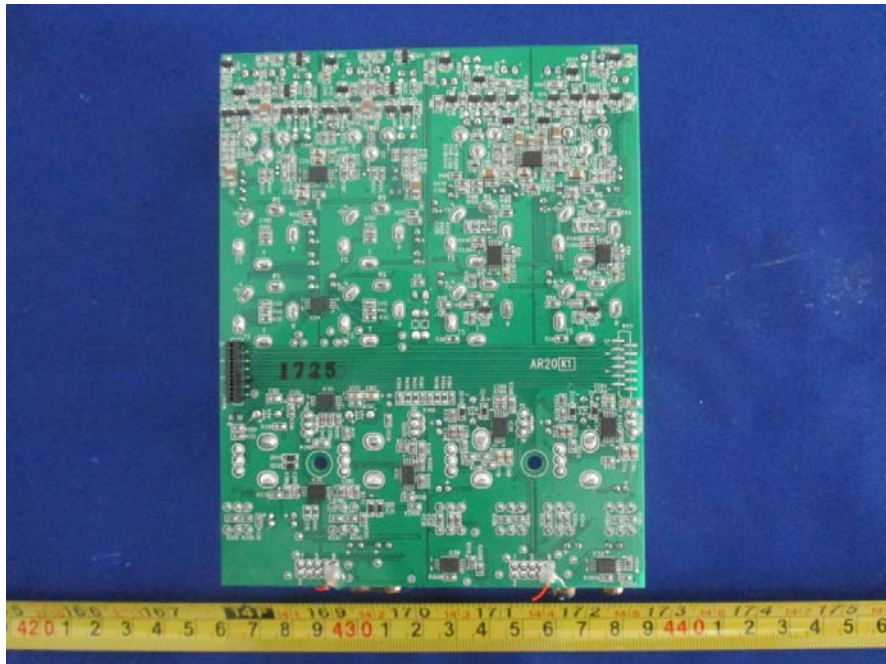
EUT – SL 12U16U 4-CH MONO CONTROL PCB3 Bottom View



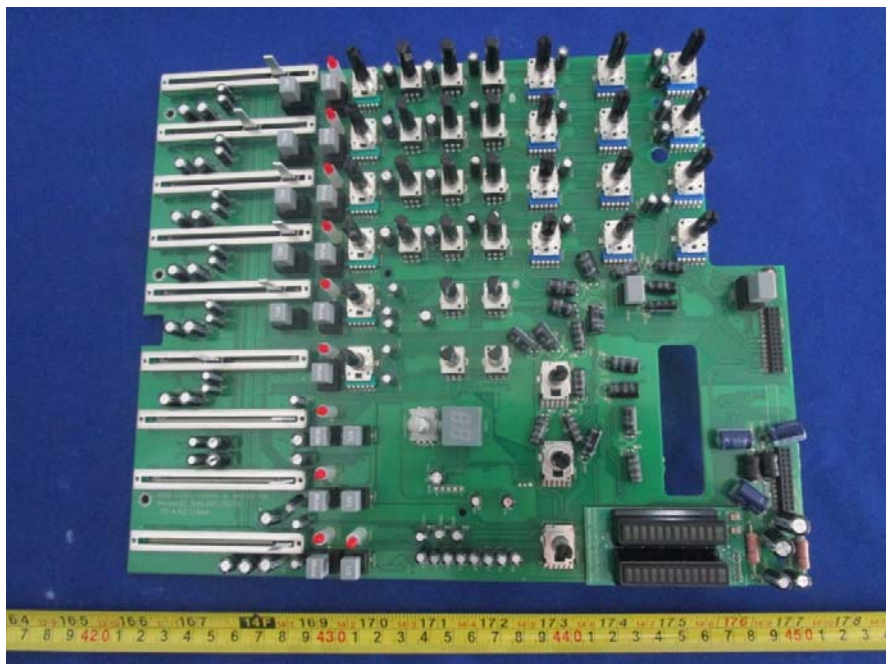
EUT – AR20 K1 4-CH MONO INPUT JACK PCB Top View



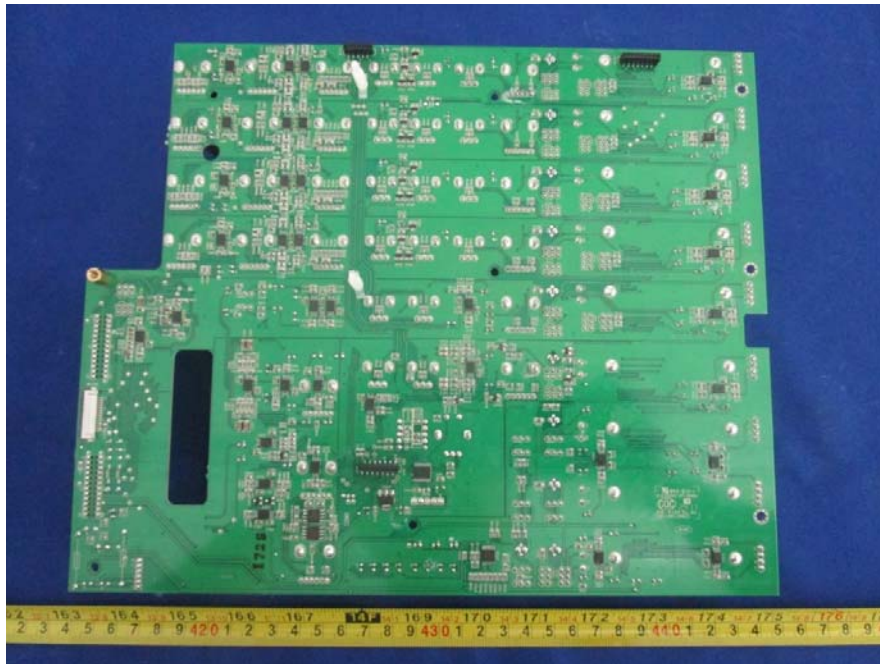
EUT – AR20 K1 4-CH MONO INPUT JACK PCB Bottom View



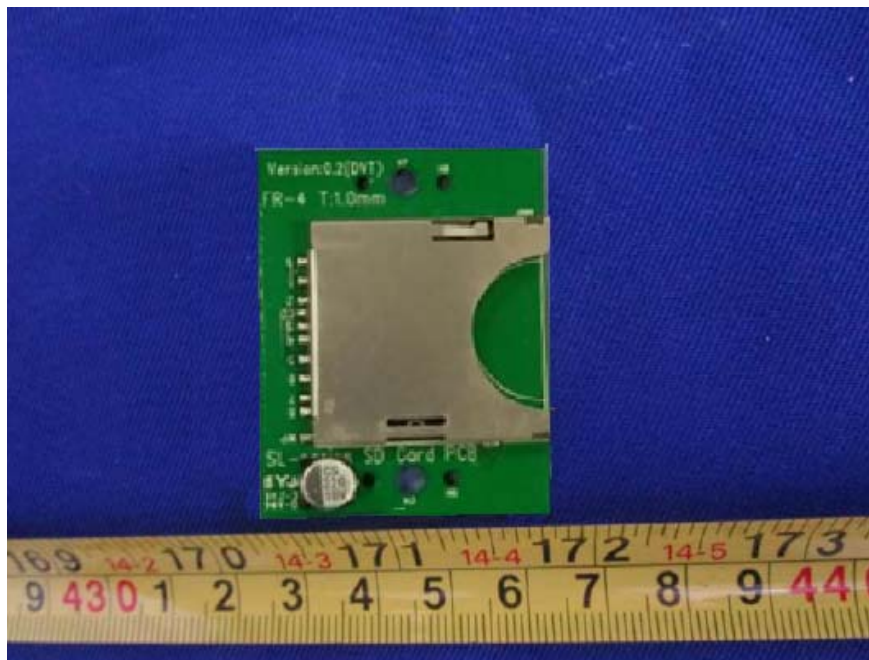
EUT – AR20 STEREO CONTROL & MASTER PCB Top View



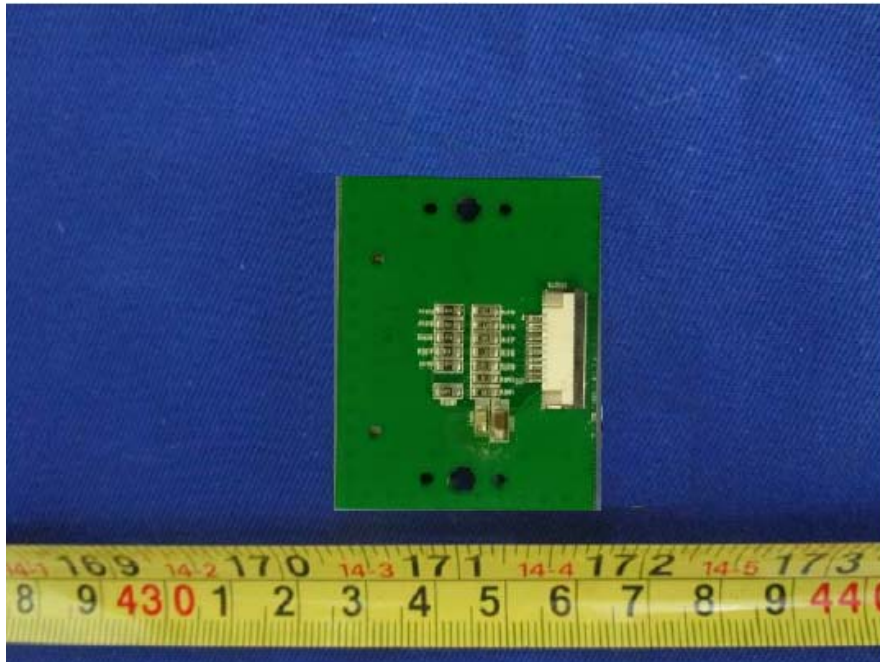
EUT – AR20 STEREO CONTROL & MASTER PCB Bottom View



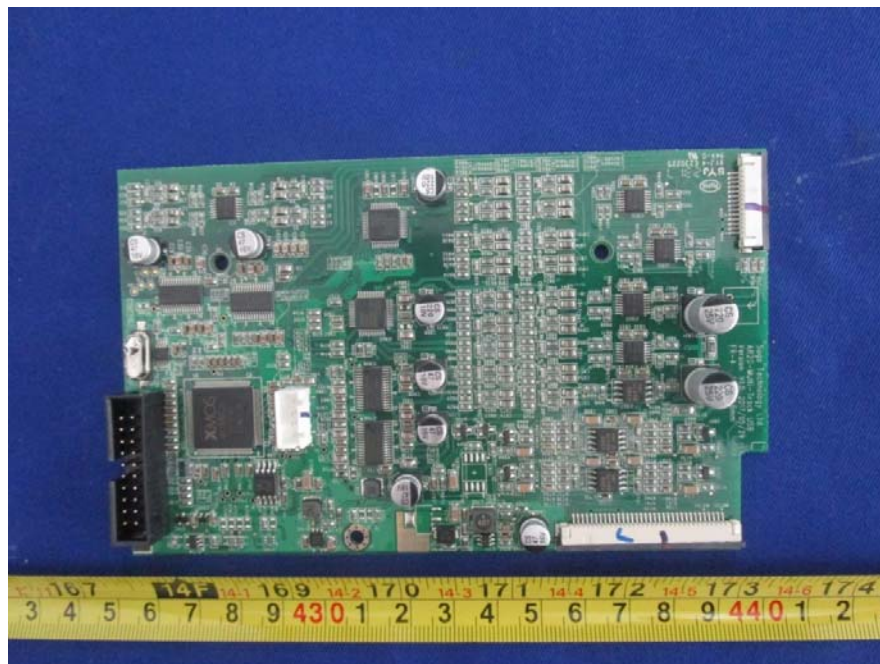
EUT – SD CARD PCB Top View



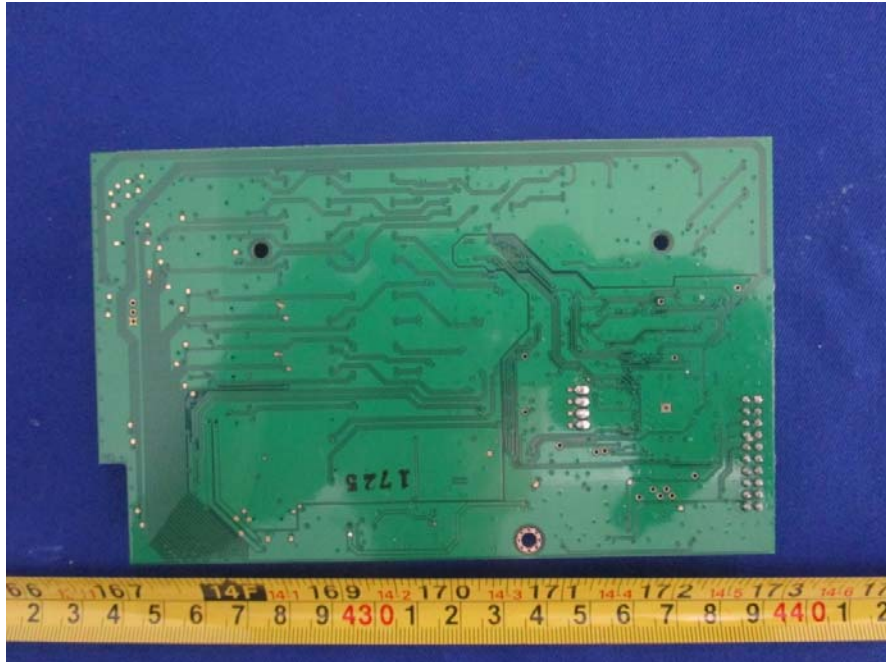
EUT – SD CARD PCB Bottom View



EUT – AR20-Multi-Track USB Top View



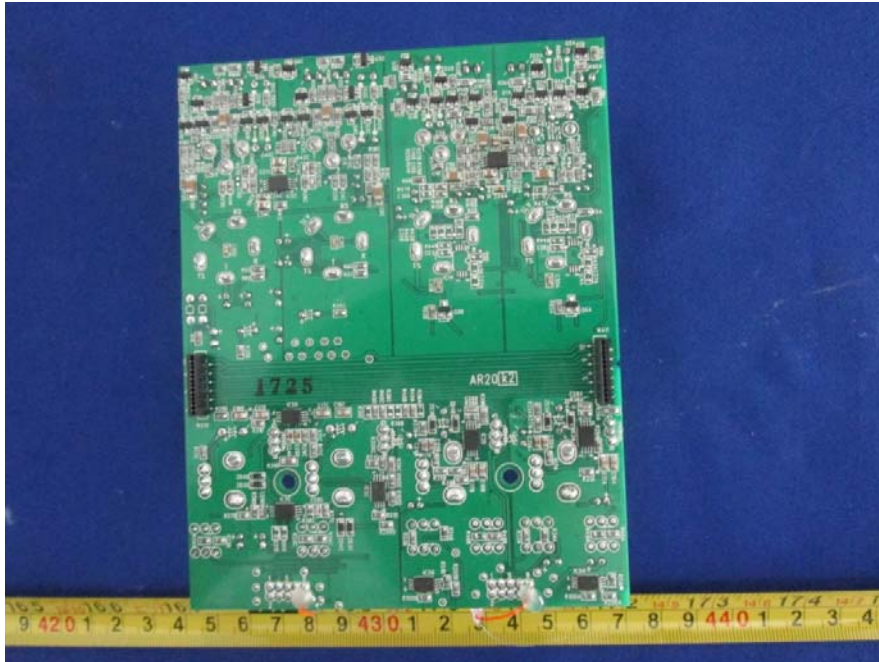
EUT – AR20-Multi-Track USB Bottom View



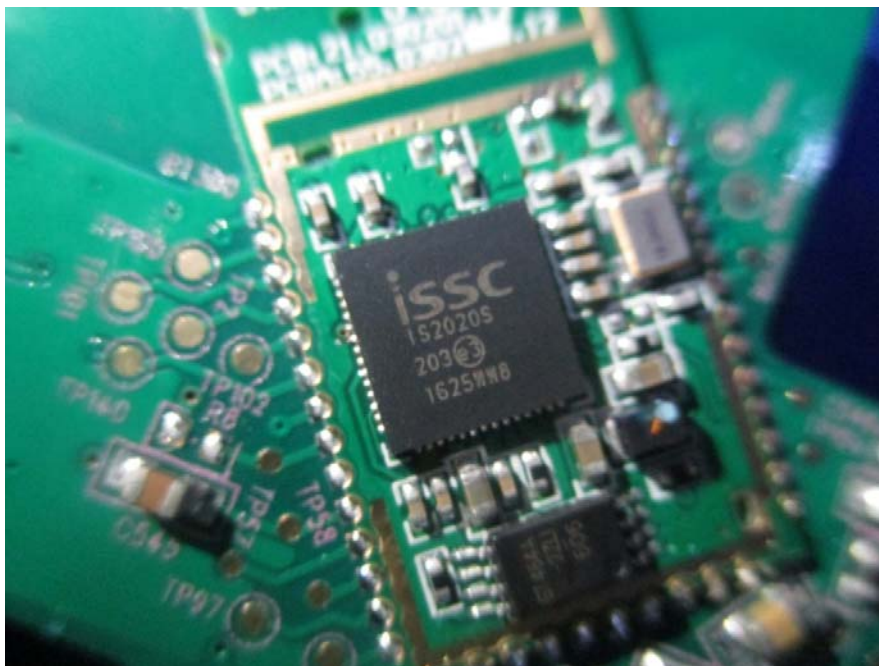
EUT – AR20 4-CH MONO INPUT JACK PCB Top View



EUT – AR20 4-CH MONO INPUT JACK PCB Bottom View



EUT – BT CHIP View



EUT – BT ANT View

