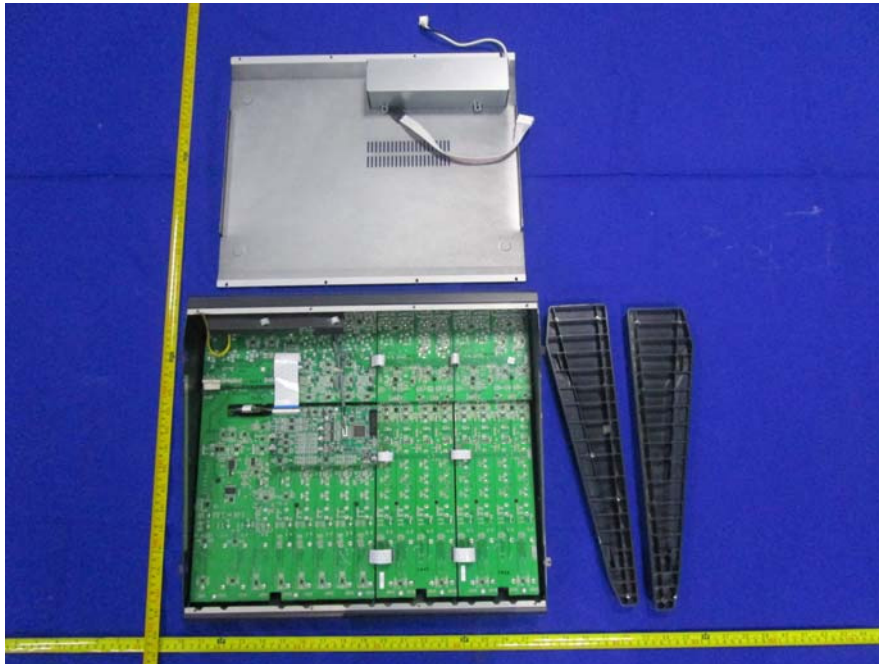


EXHIBIT C - EUT INTERNAL PHOTOGRAPHS

Model: StudioLive AR16 USB

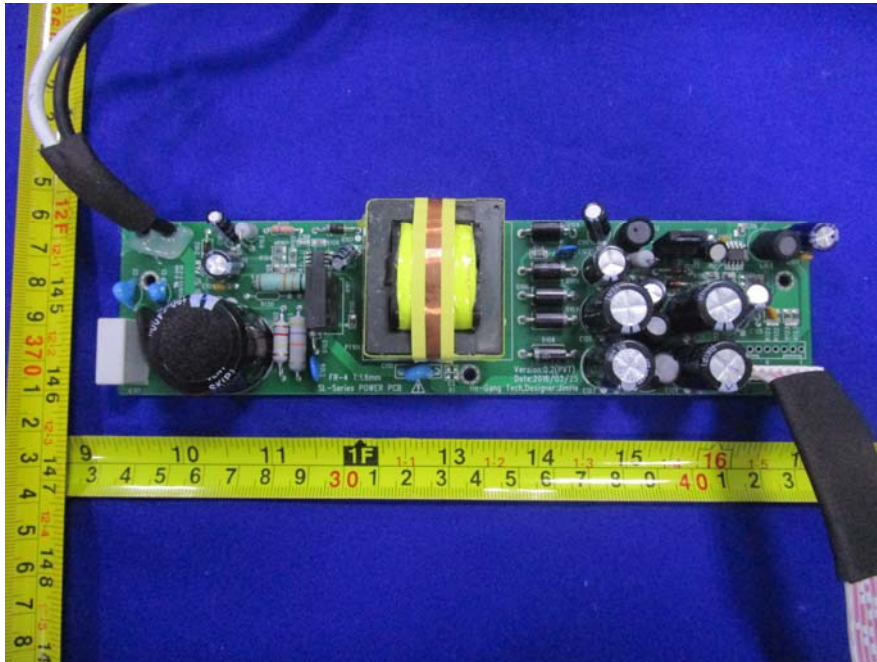
EUT – Uncover View



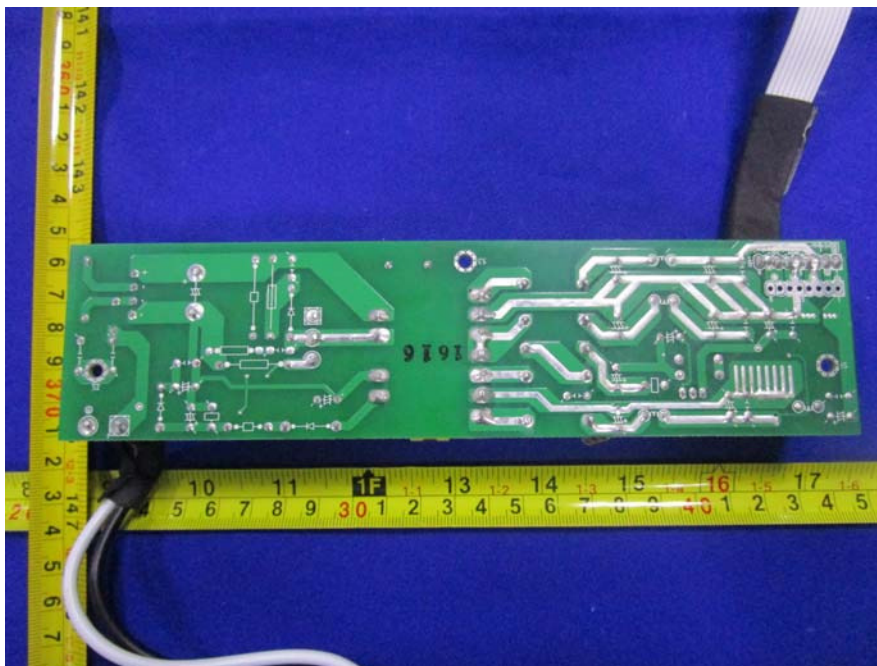
EUT – Uncover View



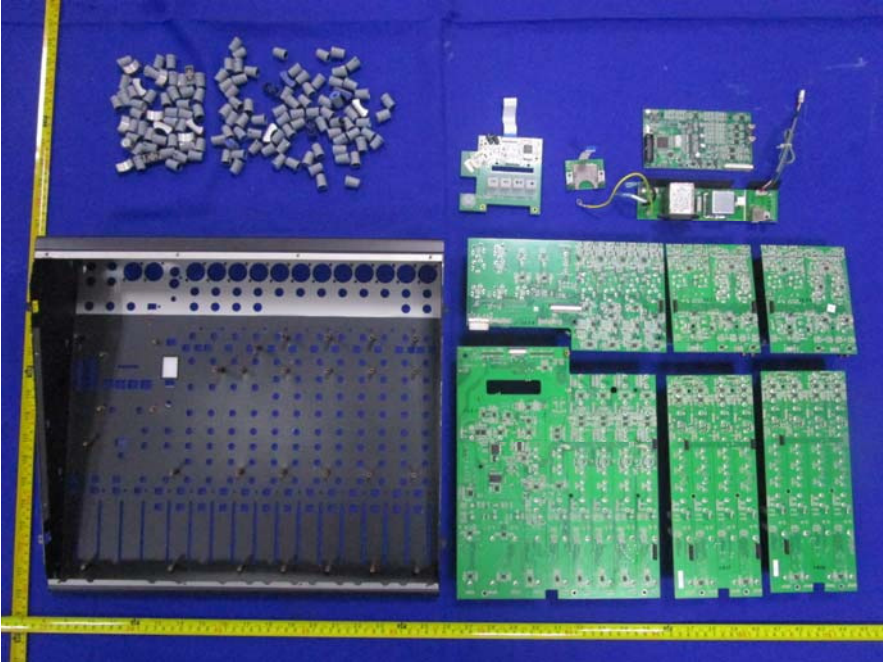
EUT –Power PCB Top View



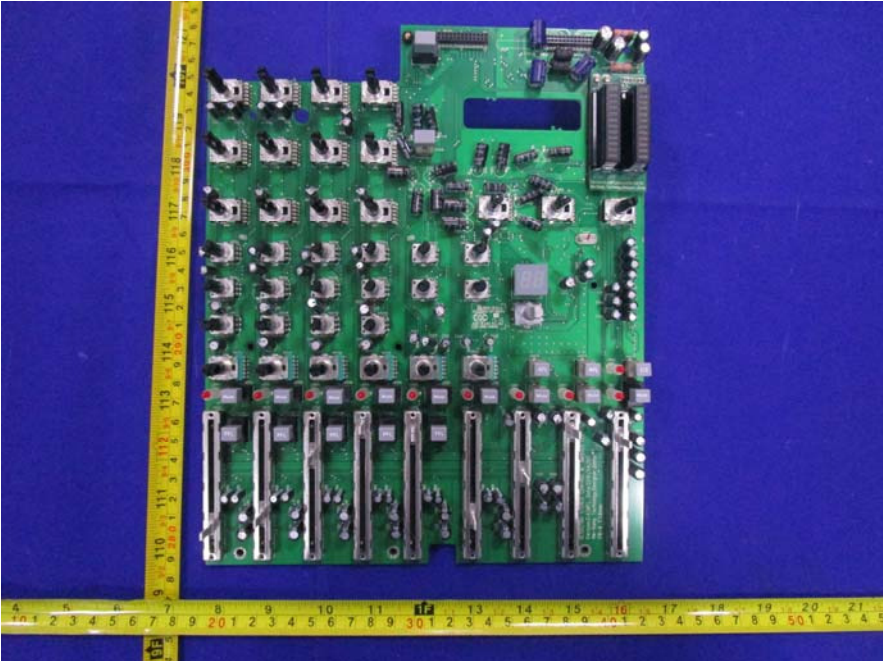
EUT –Power PCB Bottom View



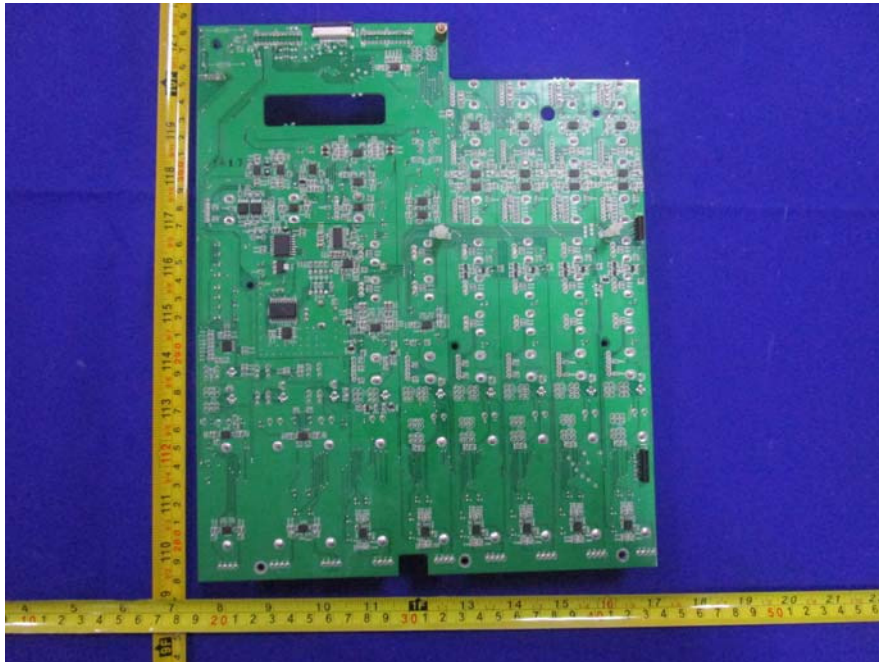
EUT –Uncover View



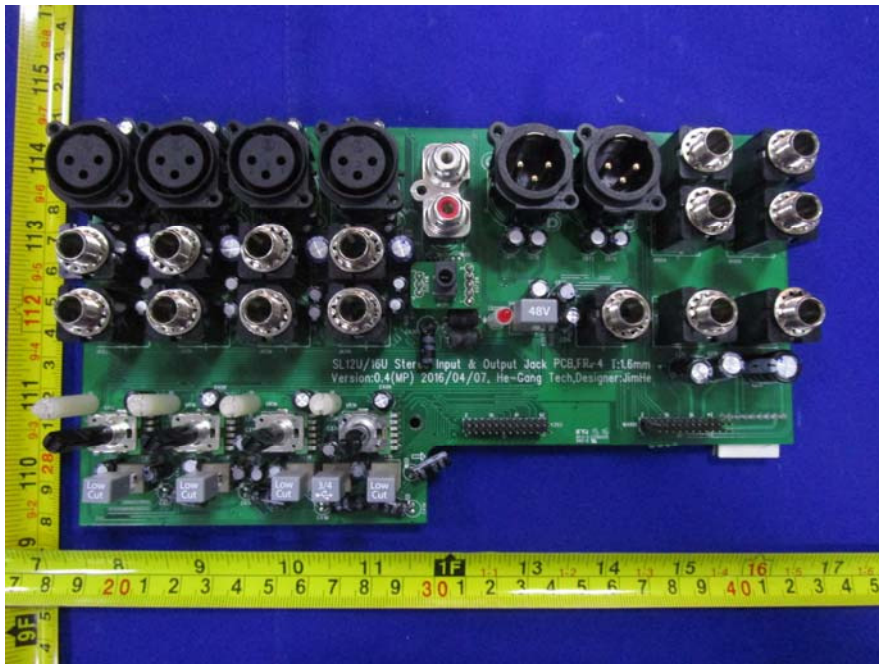
EUT –Stereo Control & Master PCB Top View



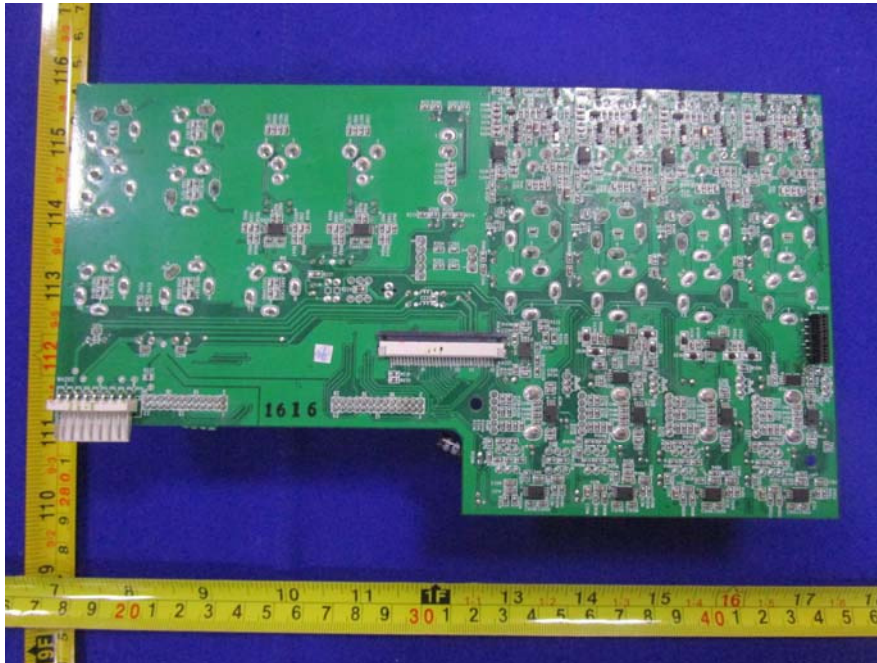
EUT –Stereo Control & Master PCB Bottom View



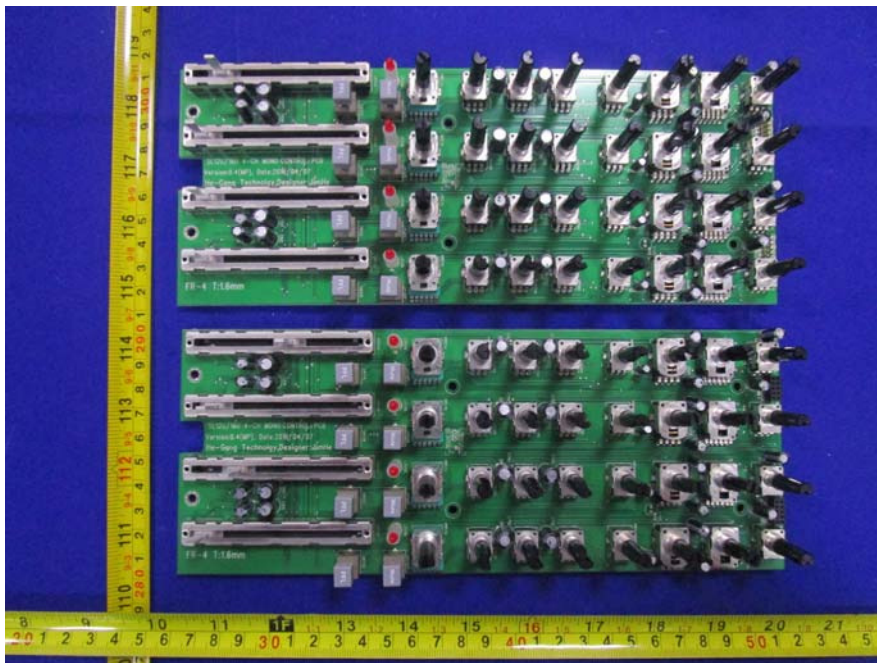
EUT –Stereo Input & Output Jack PCB Top View



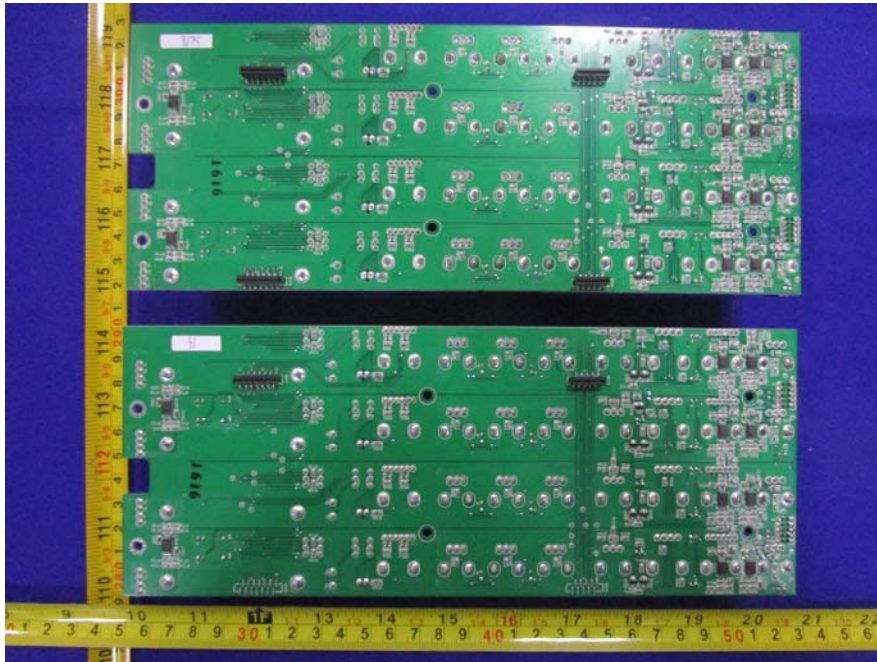
EUT –Stereo Input & Output Jack PCB Bottom View



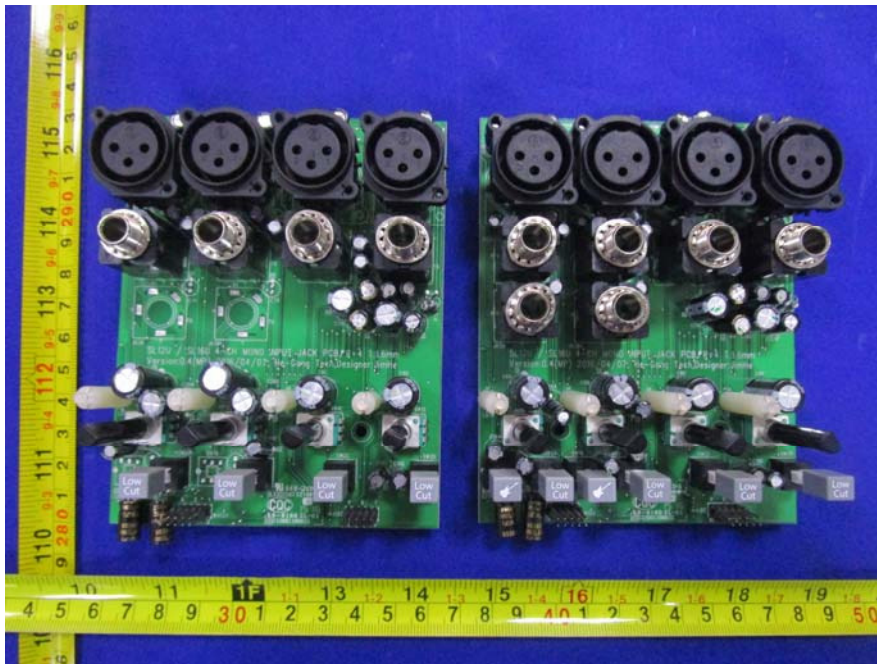
EUT –4-CH Mono Control PCB Top View



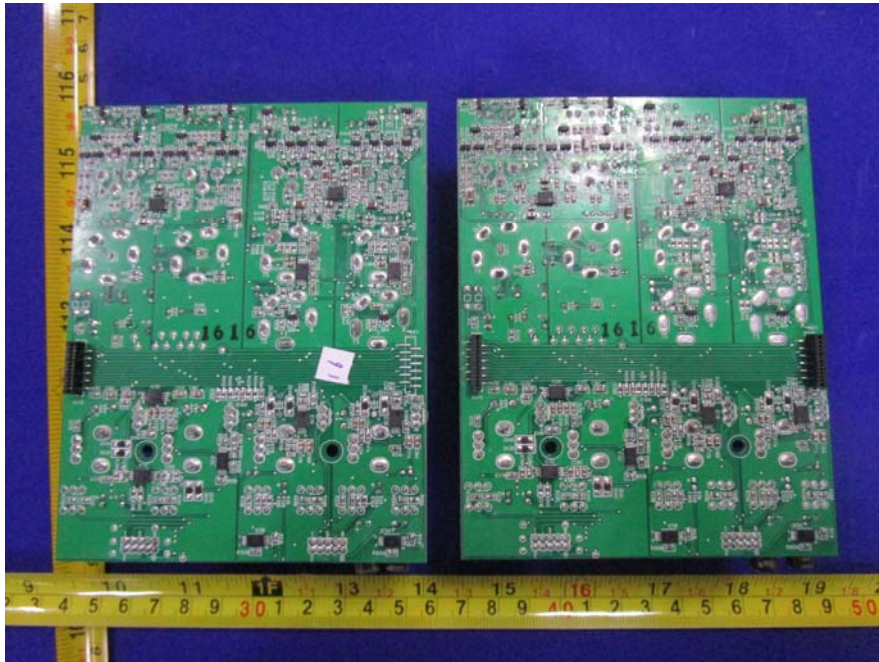
EUT -4-CH Mono Control PCB Bottom View



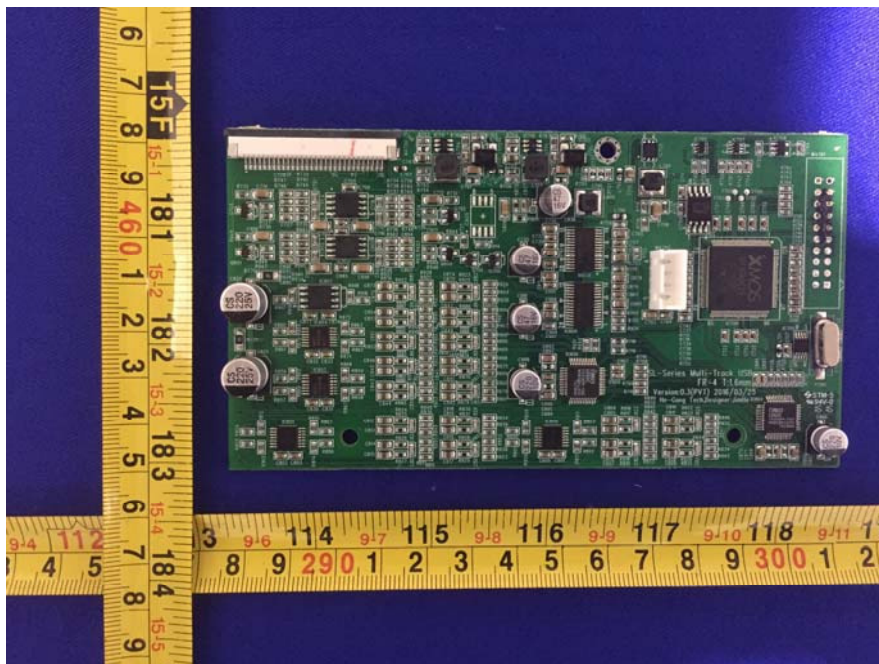
EUT -4-CH Mono Input Jack PCB Top View



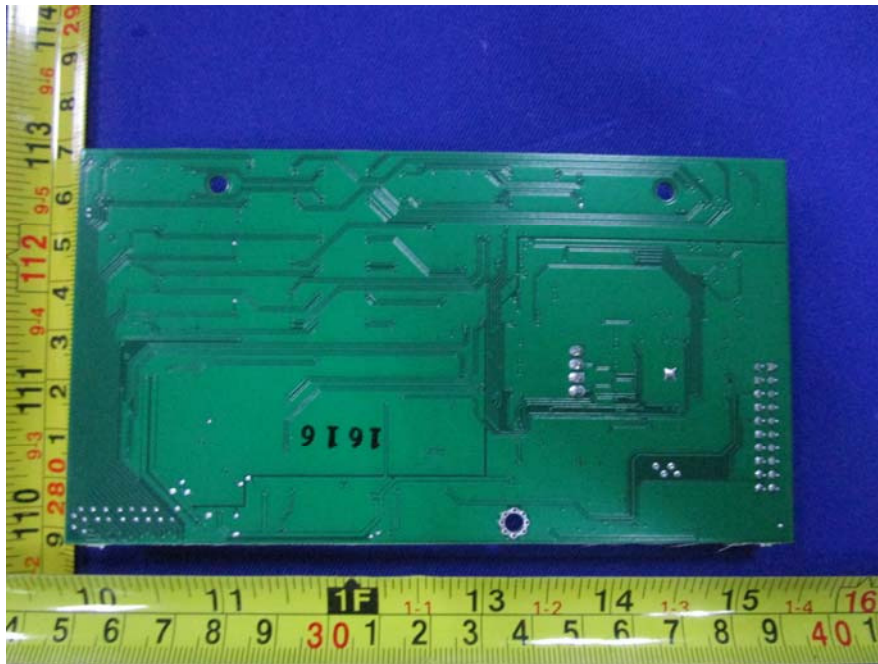
EUT -4-CH Mono Input Jack PCB Bottom View



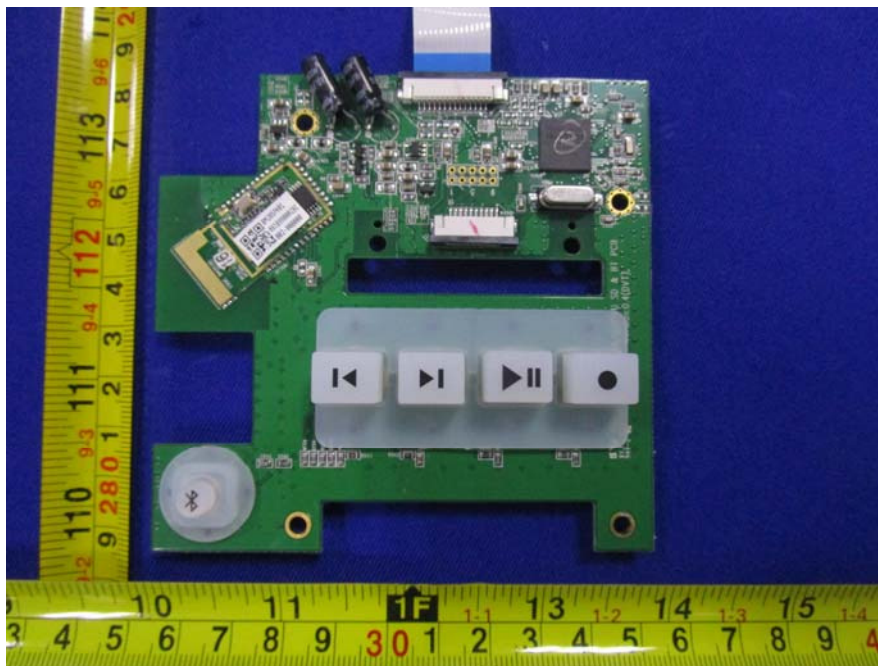
EUT -Multi-Track USB PCB Top View



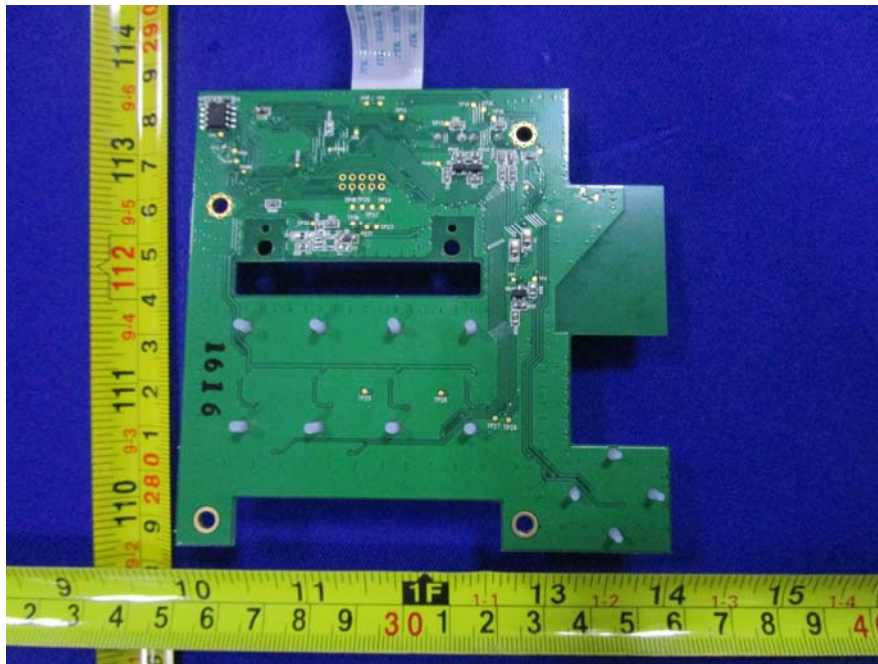
EUT –Multi-Track USB PCB Bottom View



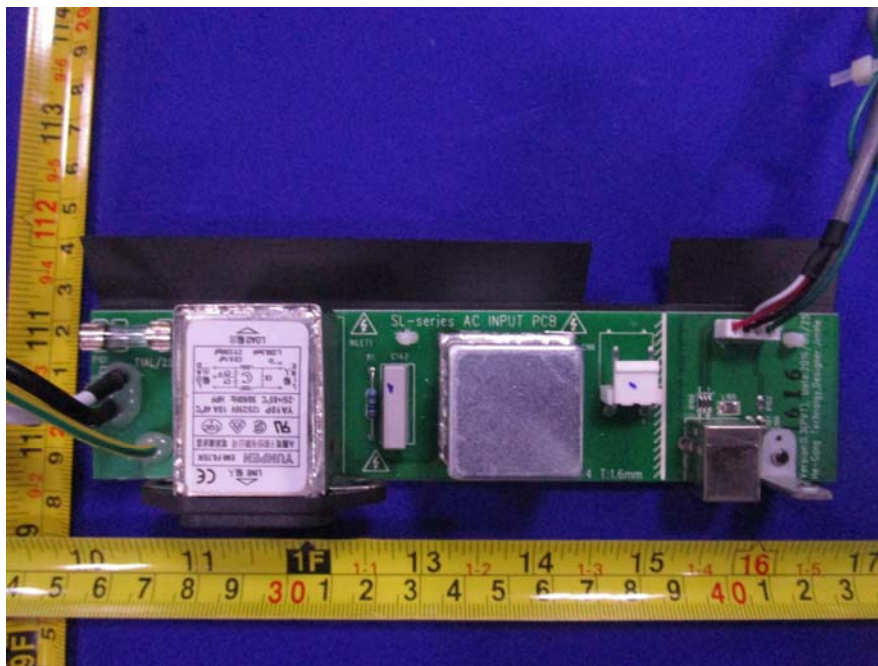
EUT –SD&BT PCB Top View



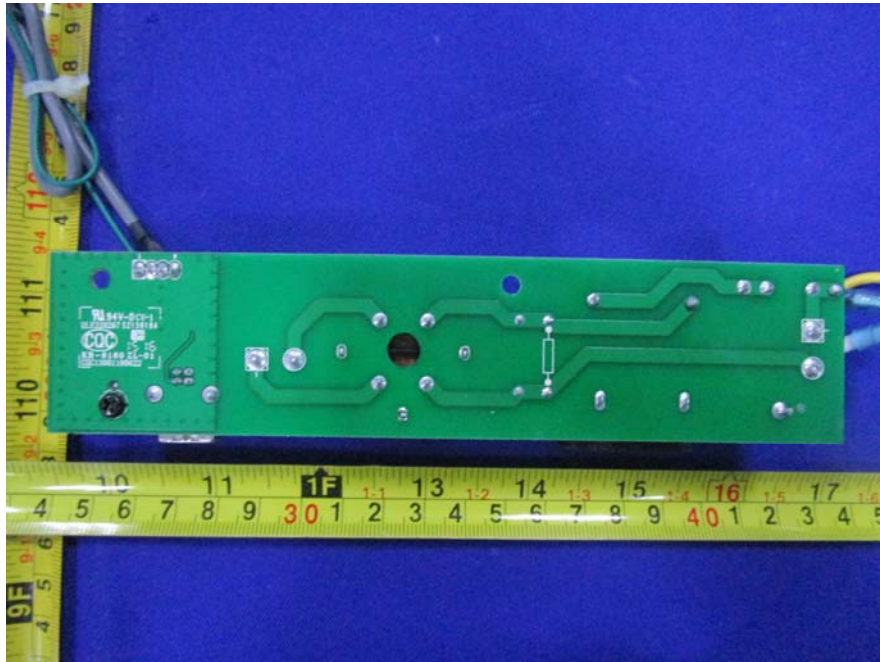
EUT -SD&BT PCB Bottom View



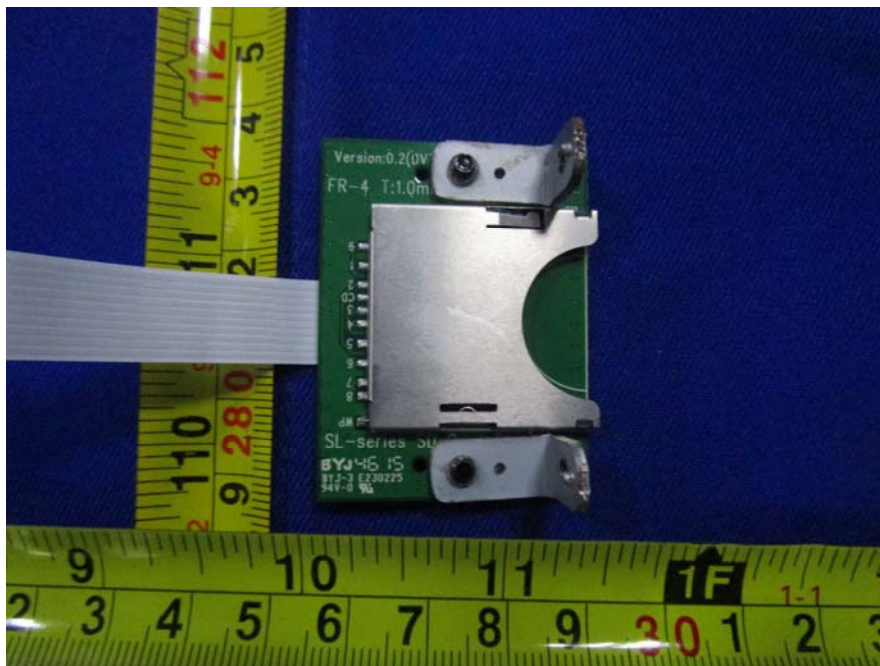
EUT -AC Input PCB Top View



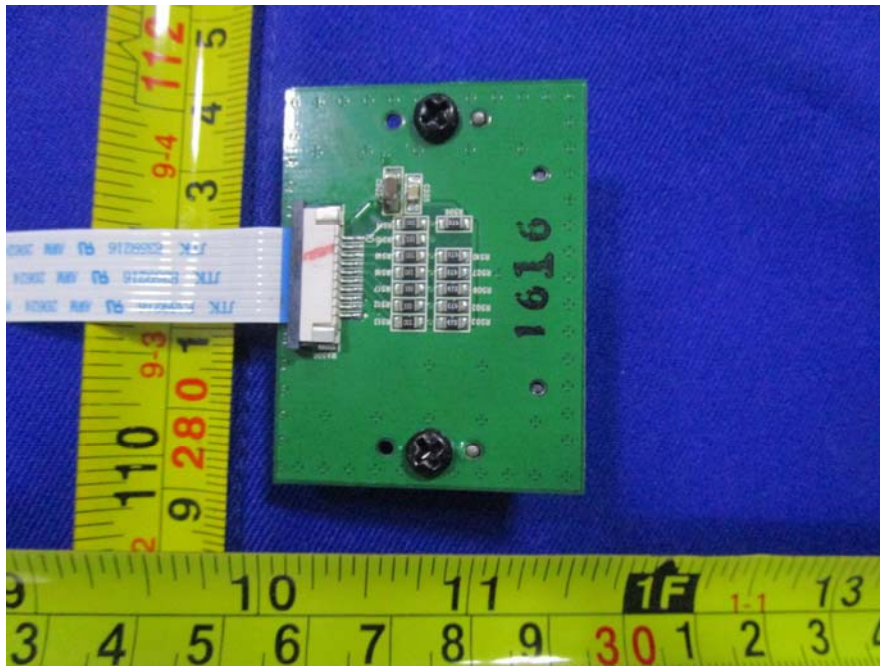
EUT -AC Input PCB Bottom View



EUT -SD Card PCB Top View



EUT -SD Card PCB Bottom View



EUT -Antenna View



EUT -BT Chip View

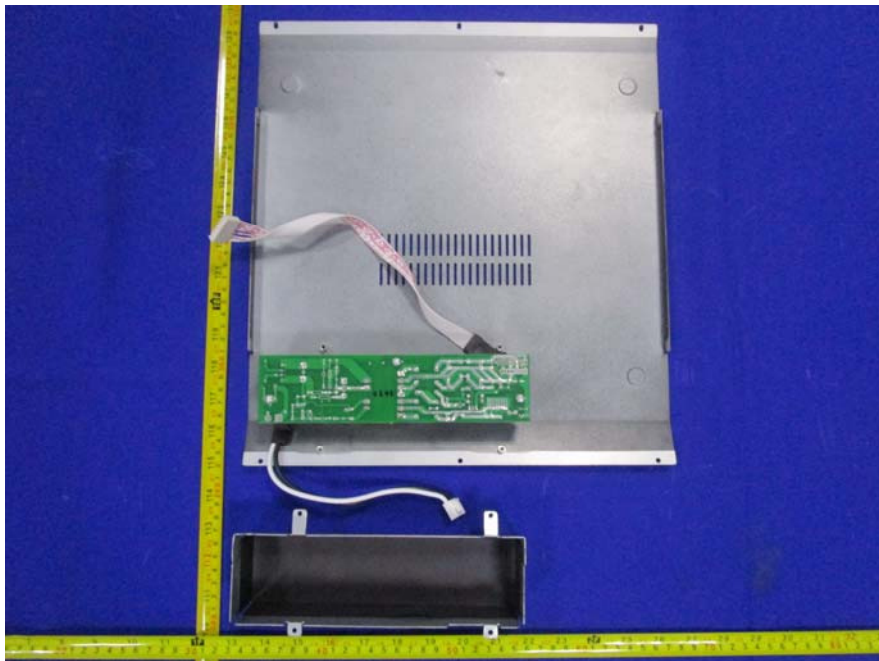


Model: StudioLive AR12 USB

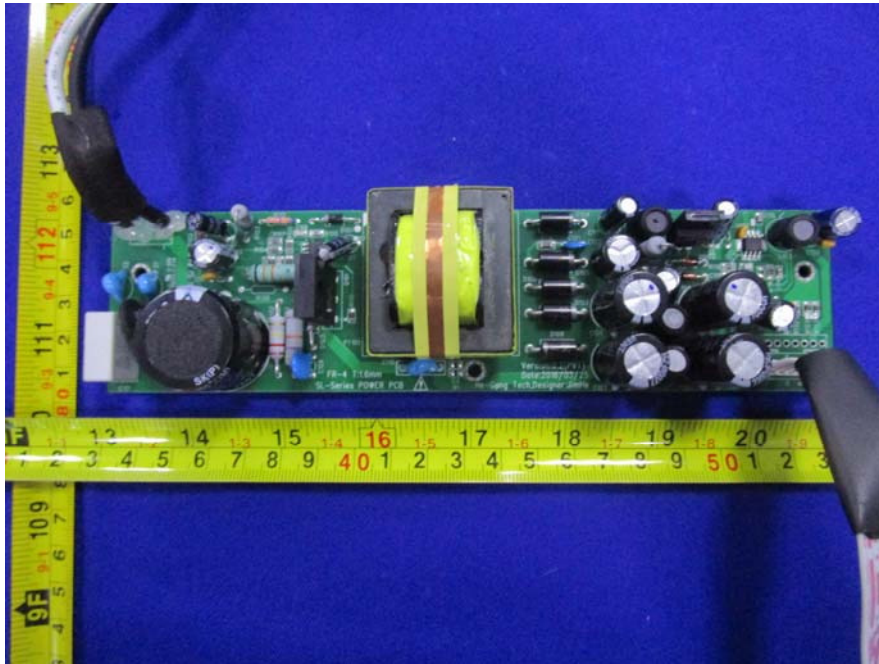
EUT – Uncover View



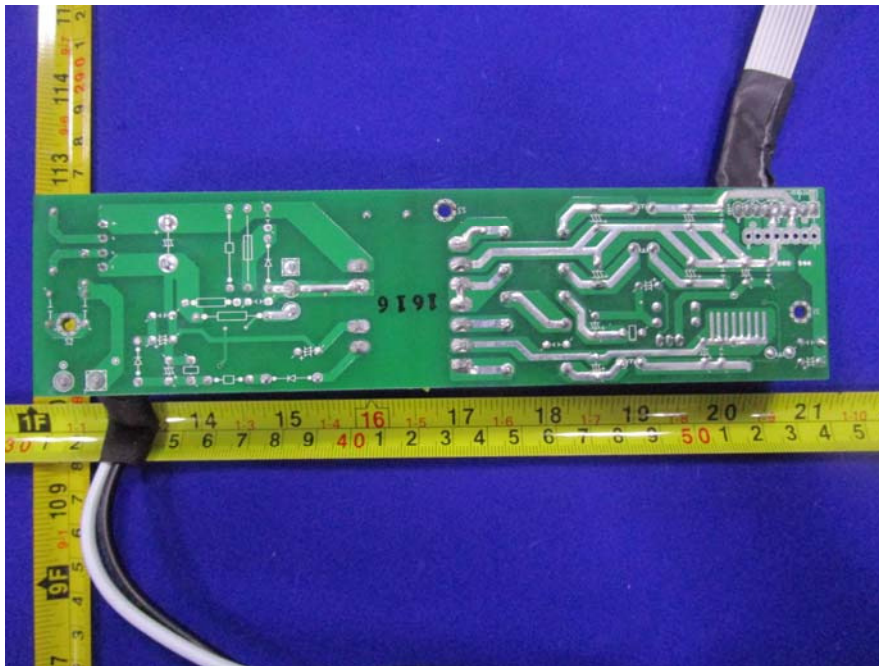
EUT – Uncover View



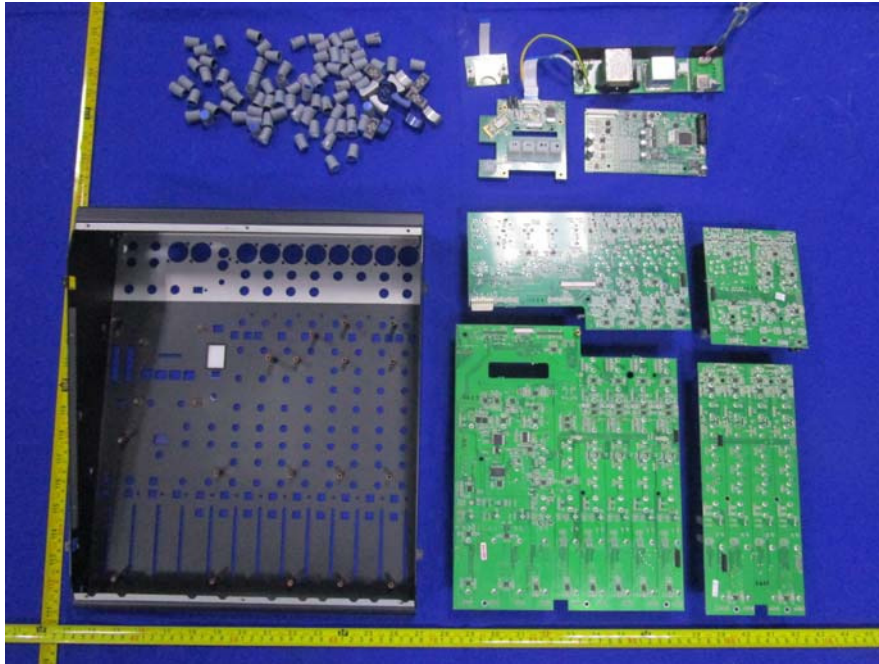
EUT –Power PCB Top View



EUT –Power PCB Bottom View



EUT –Uncover View



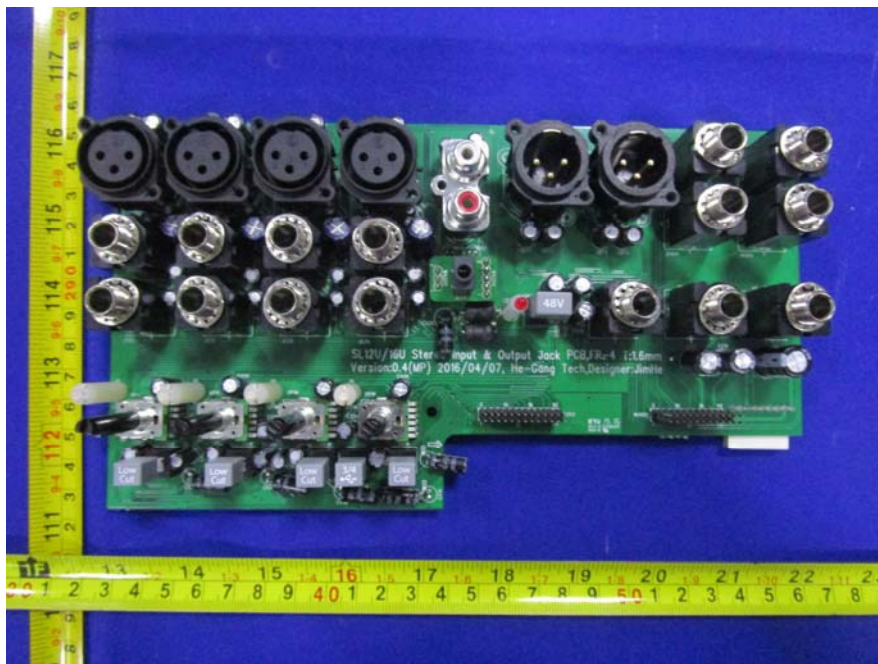
EUT –Stereo Control & Master PCB Top View



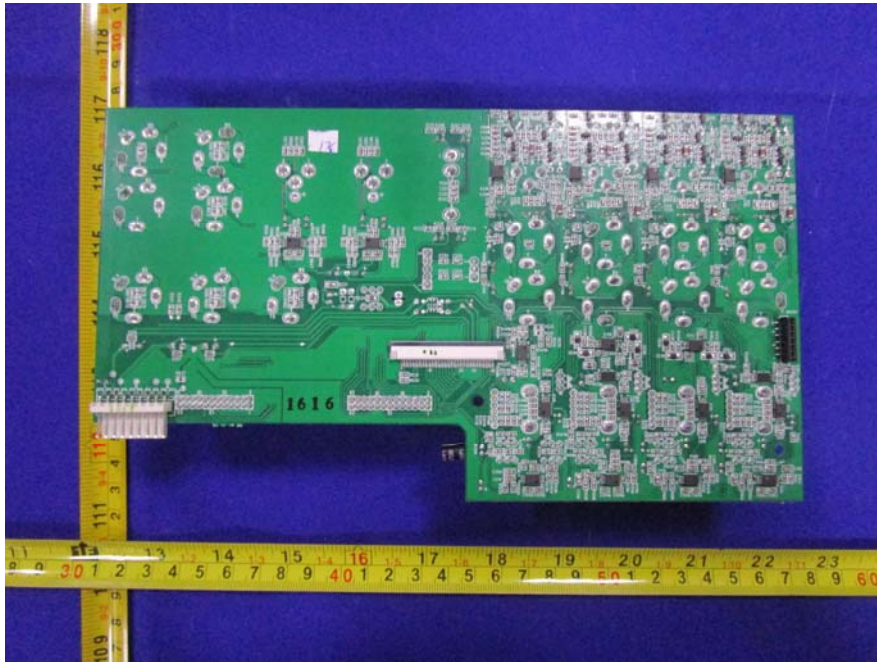
EUT –Stereo Control & Master PCB Bottom View



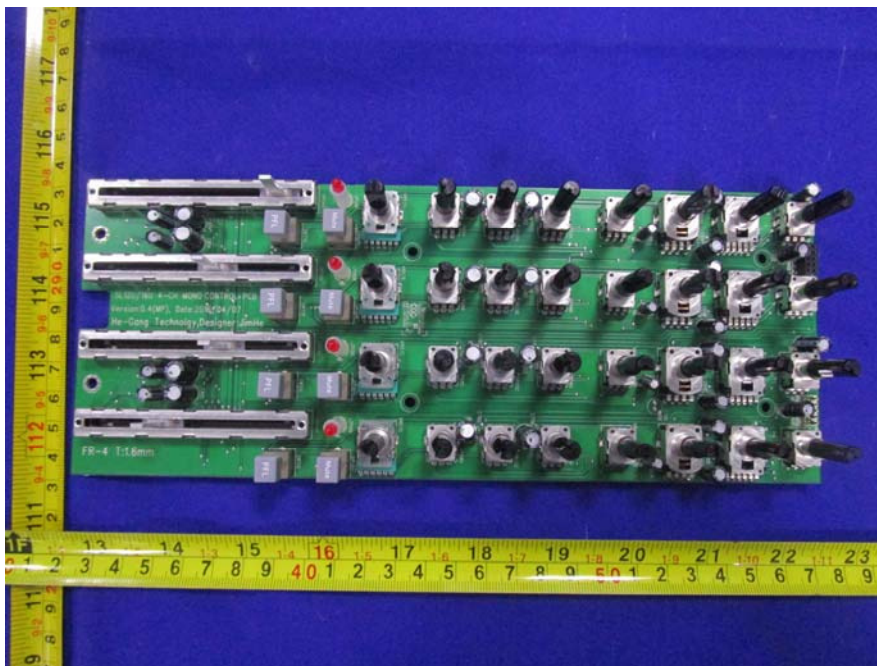
EUT –Stereo Input & Output Jack PCB Top View



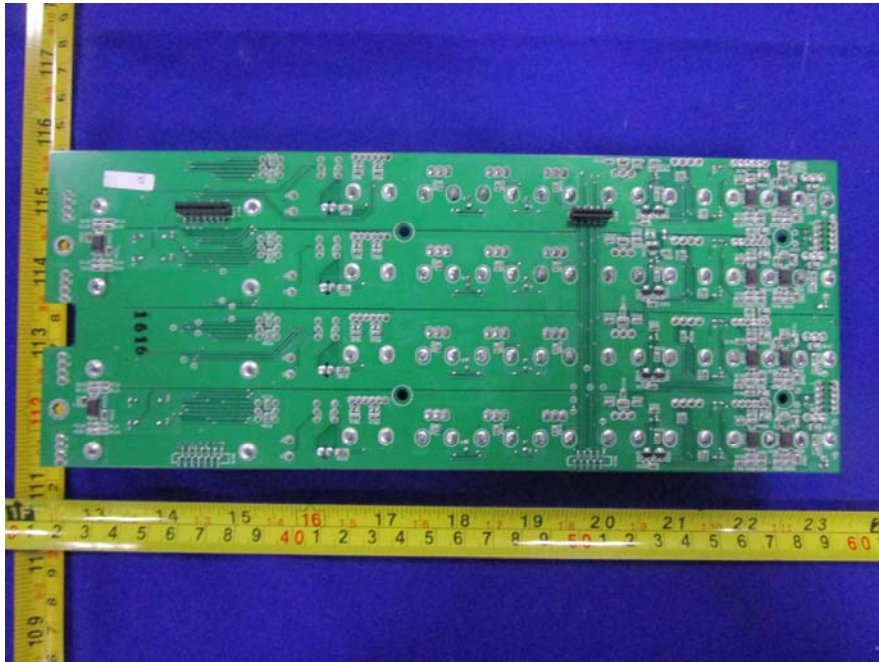
EUT –Stereo Input & Output Jack PCB Bottom View



EUT –4-CH Mono Control PCB Top View



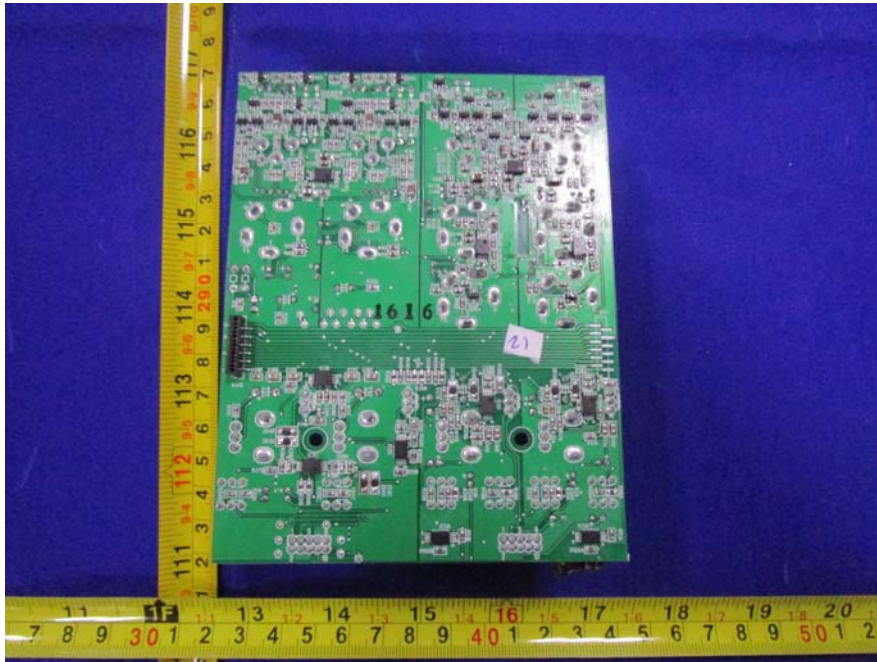
EUT -4-CH Mono Control PCB Bottom View



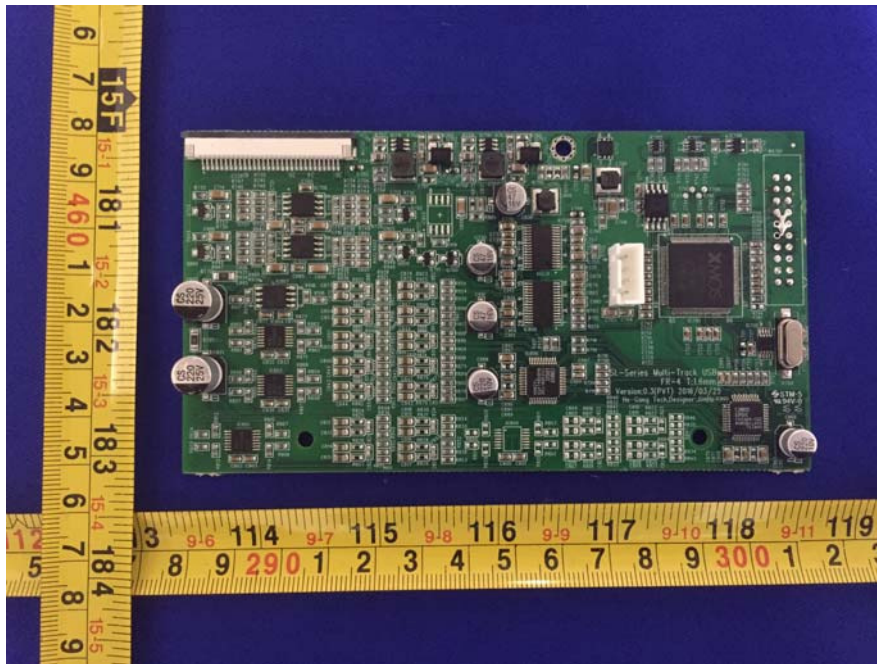
EUT -4-CH Mono Input Jack PCB Top View



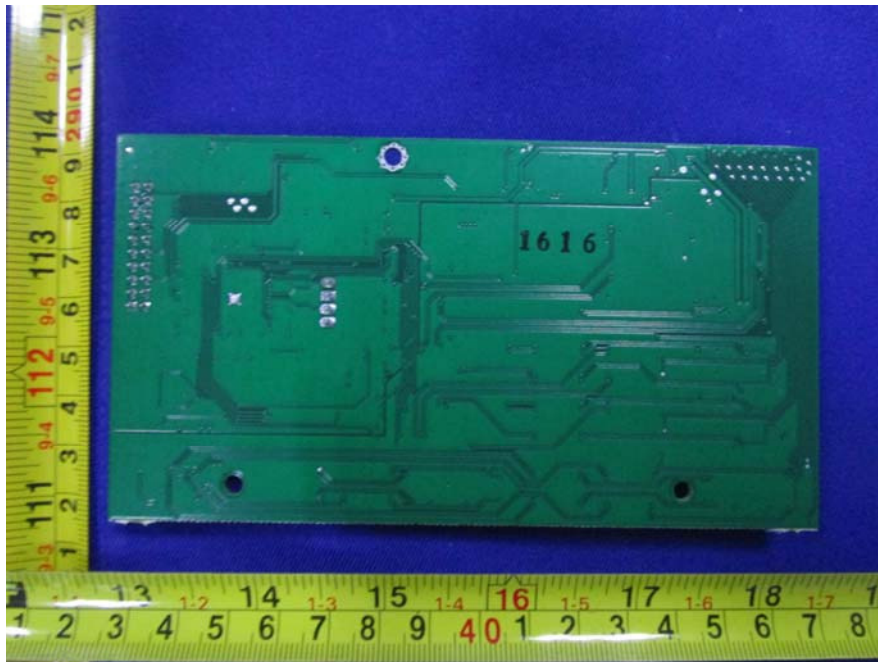
EUT –4-CH Mono Input Jack PCB Bottom View



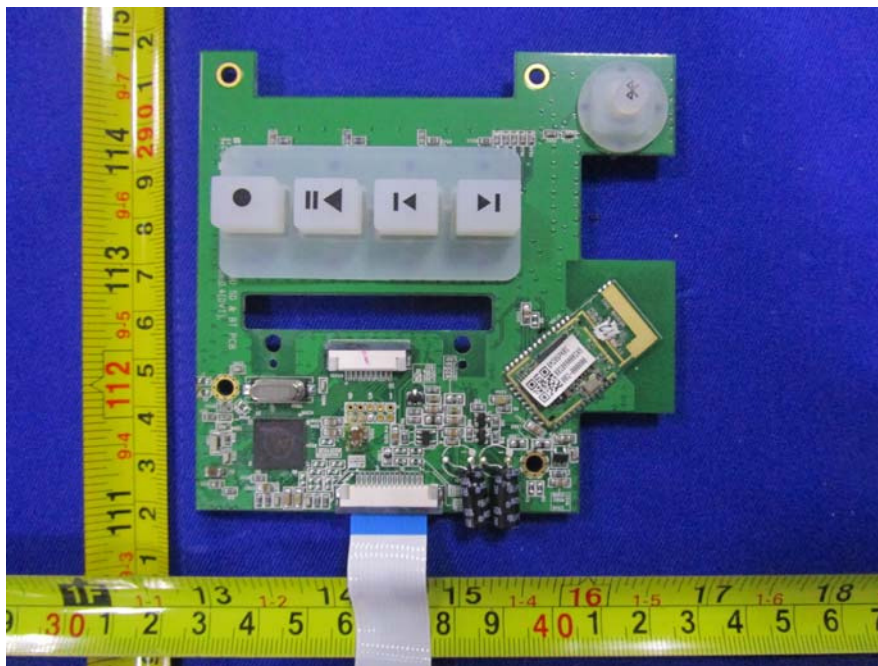
EUT –Multi-Track USB PCB Top View



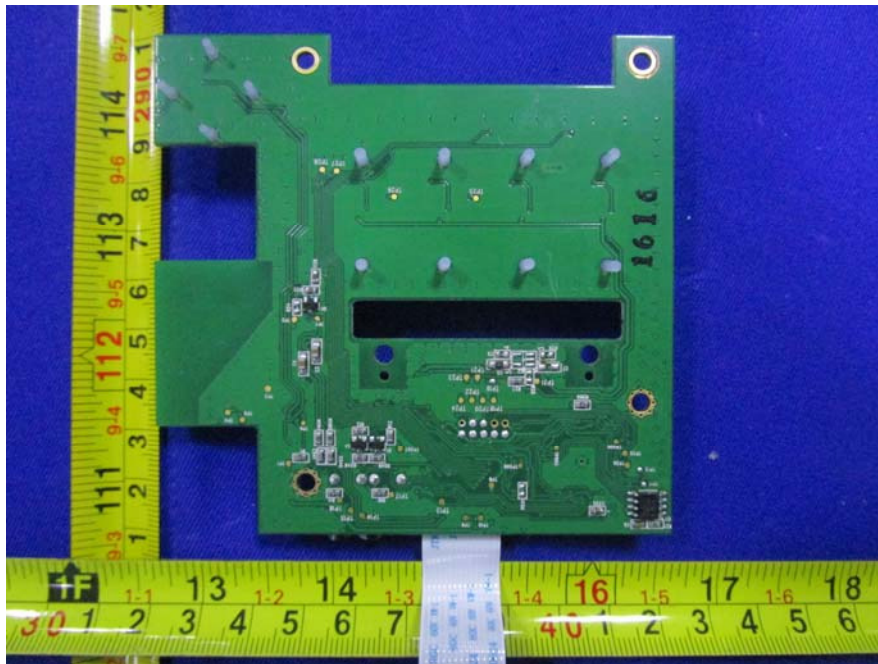
EUT –Multi-Track USB PCB Bottom View



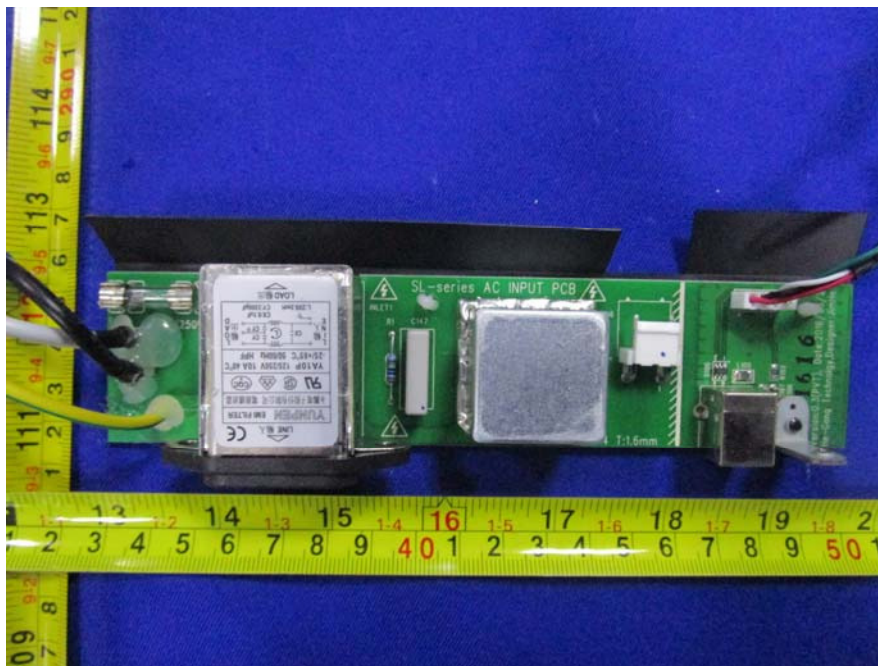
EUT –SD&BT PCB Top View



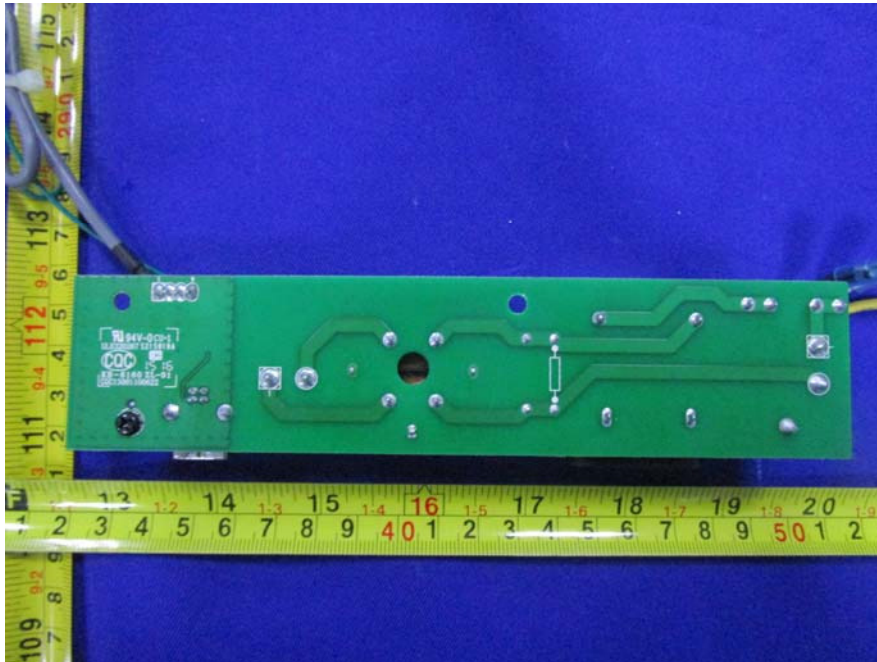
EUT -SD&BT PCB Bottom View



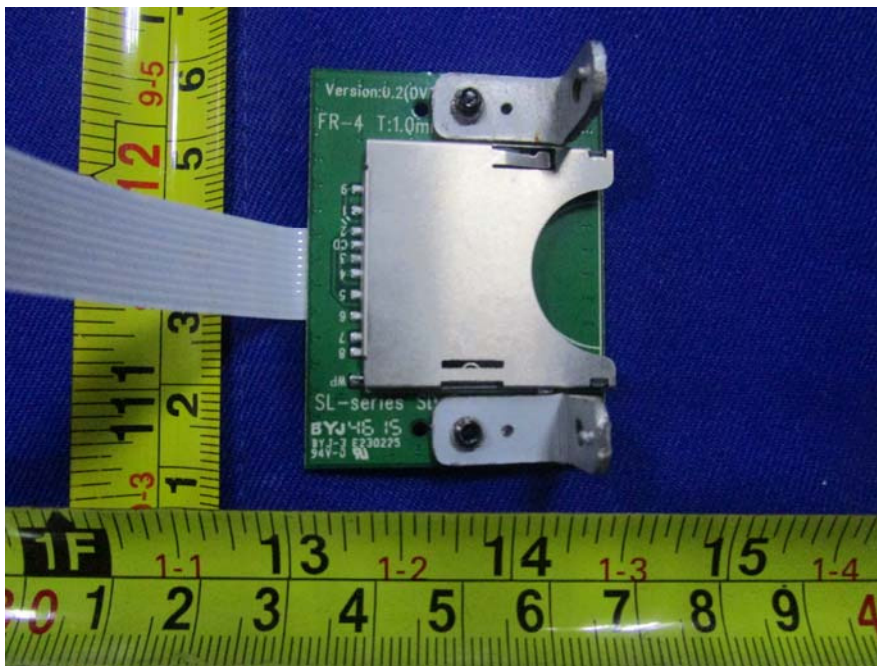
EUT -AC Input PCB Top View



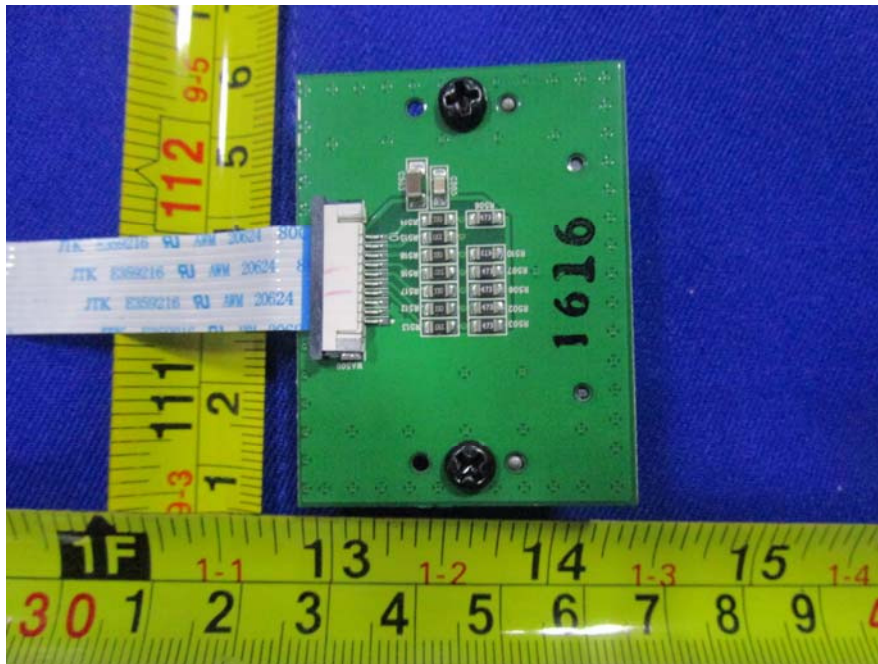
EUT –AC Input PCB Bottom View



EUT –SD Card PCB Top View



EUT -SD Card PCB Bottom View



EUT -Antenna View



EUT -BT Chip View



Model: StudioLive AR8 USB

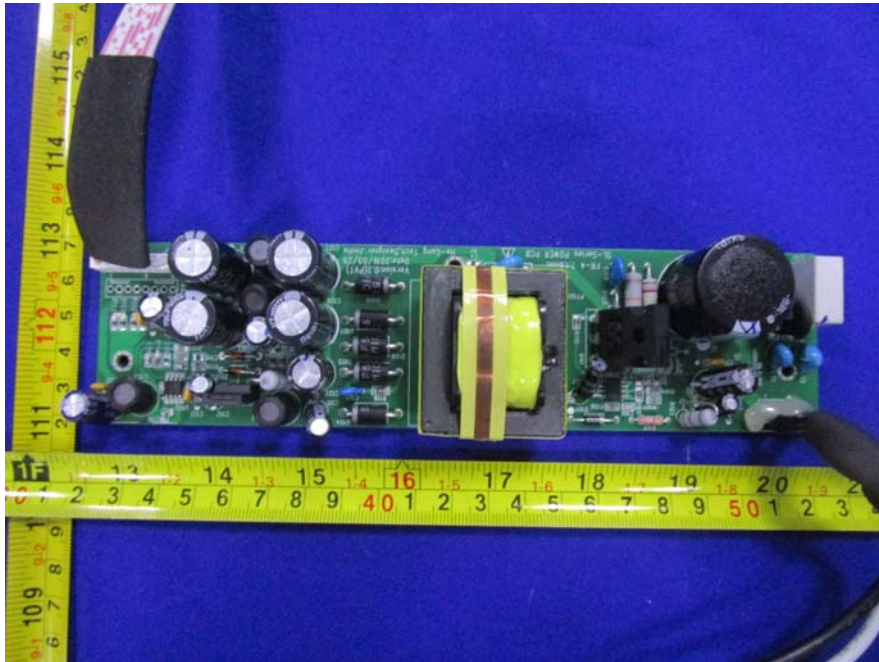
EUT – Uncover View



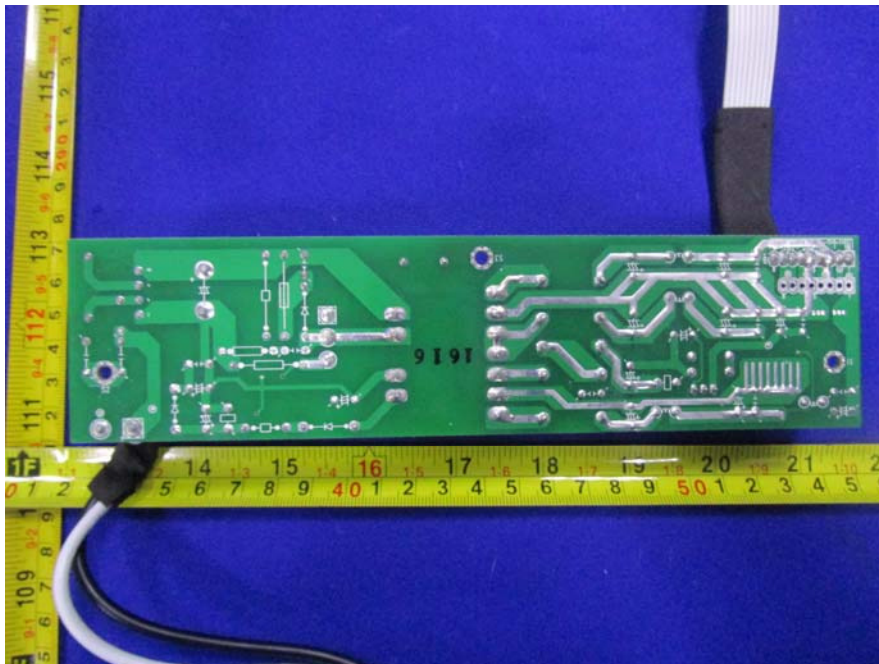
EUT – Uncover View



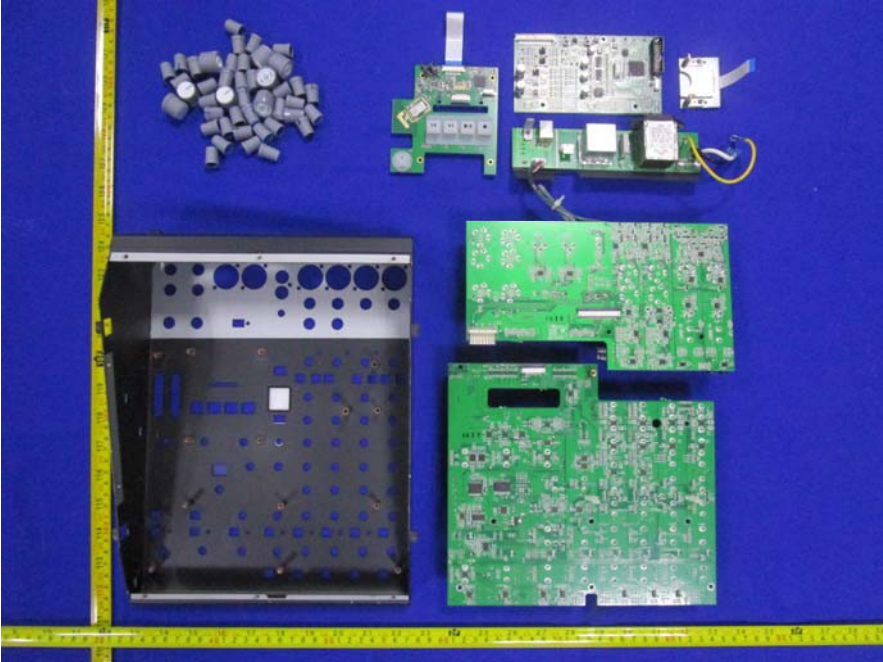
EUT –Power PCB Top View



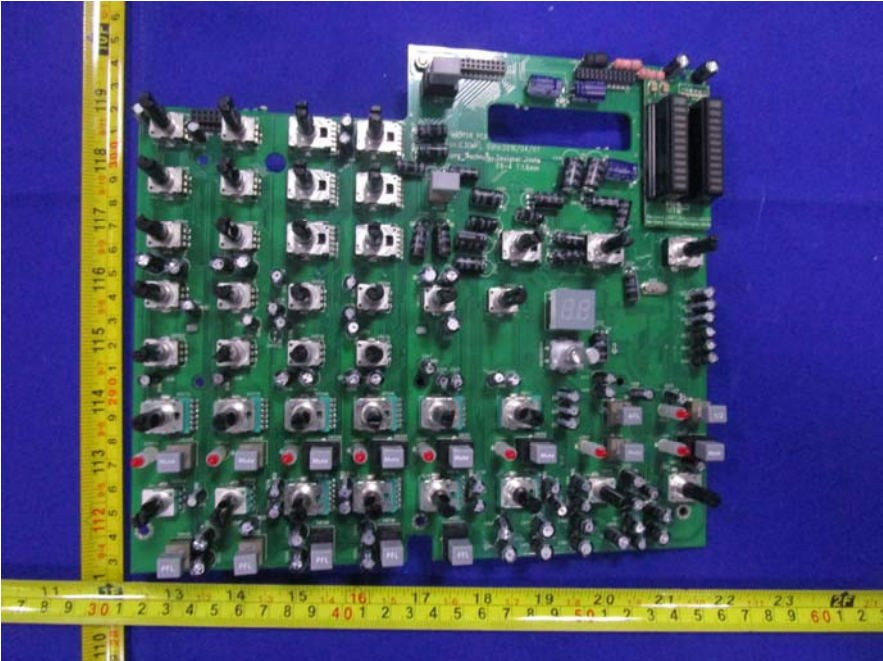
EUT –Power PCB Bottom View



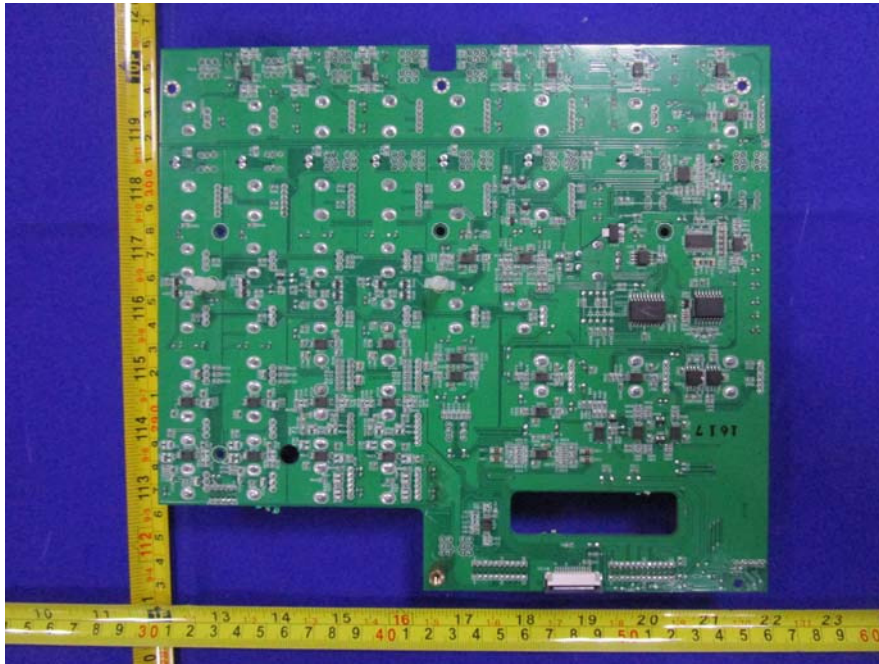
EUT –Uncover View



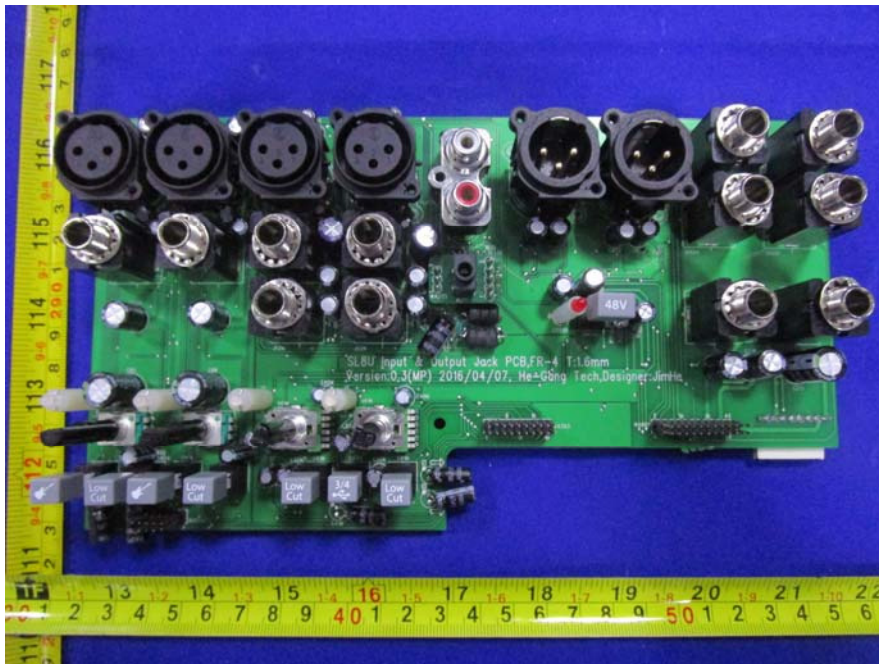
EUT –Master PCB Top View



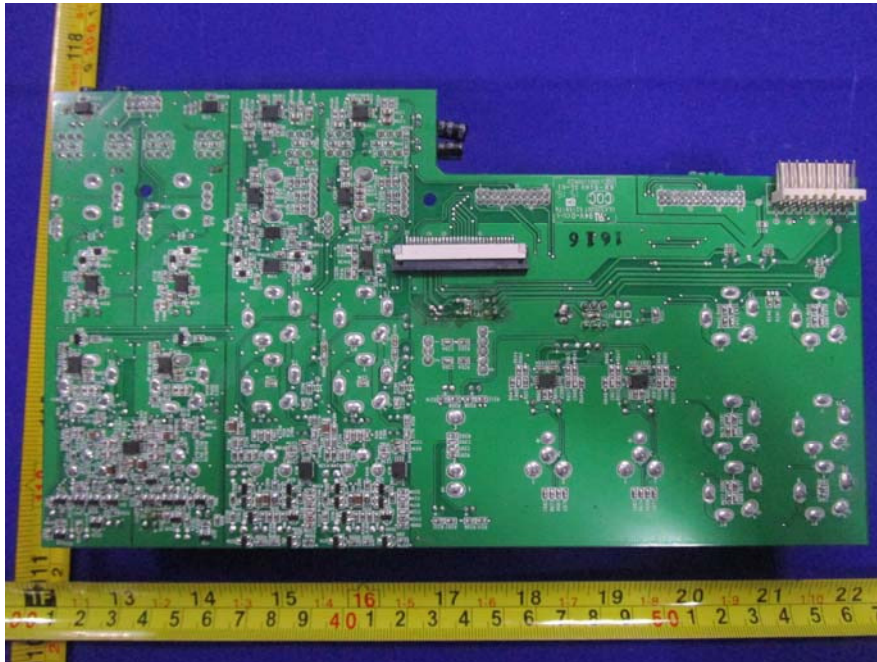
EUT –Master PCB Bottom View



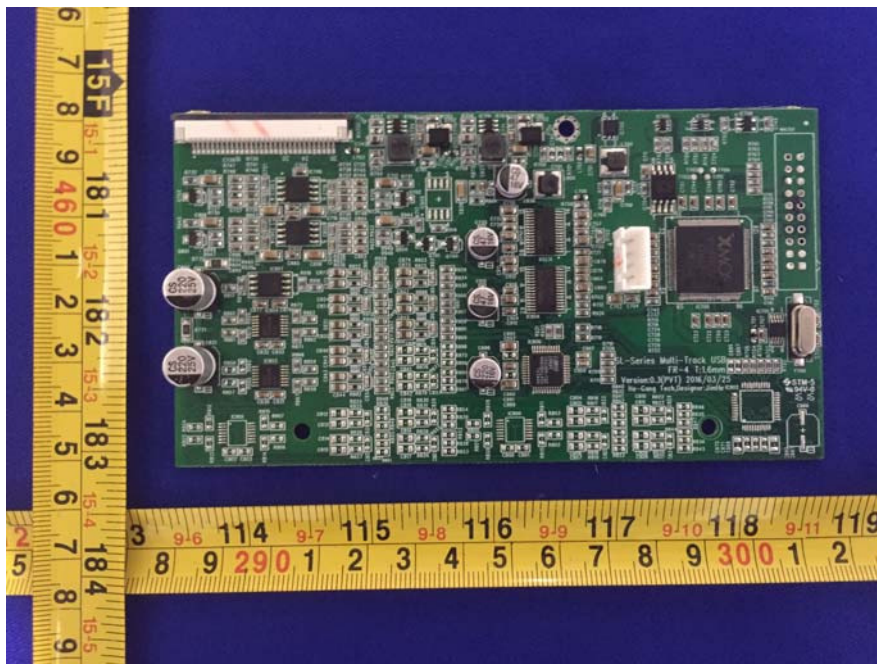
EUT –Stereo Input & Output Jack PCB Top View



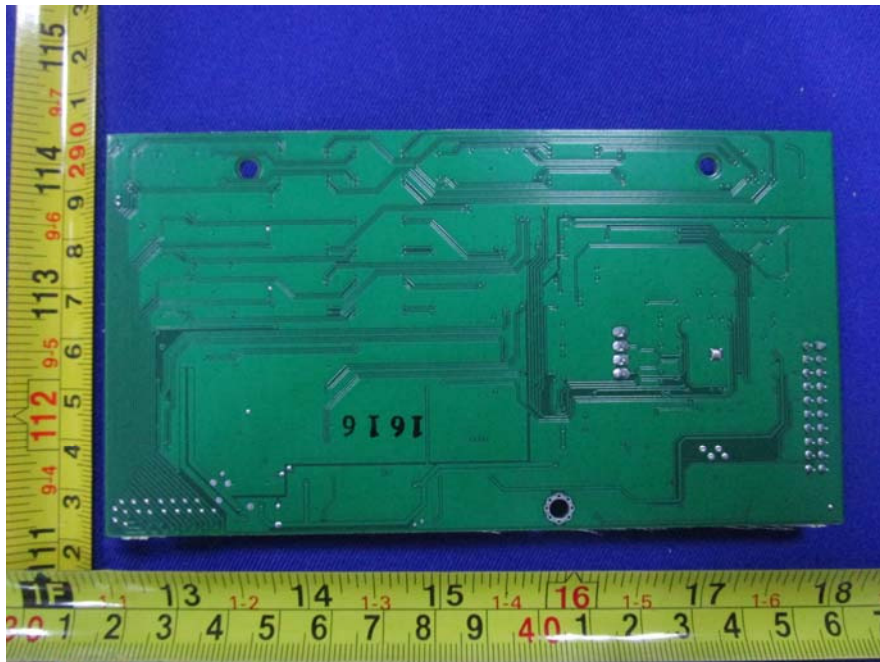
EUT –Stereo Input & Output Jack PCB Bottom View



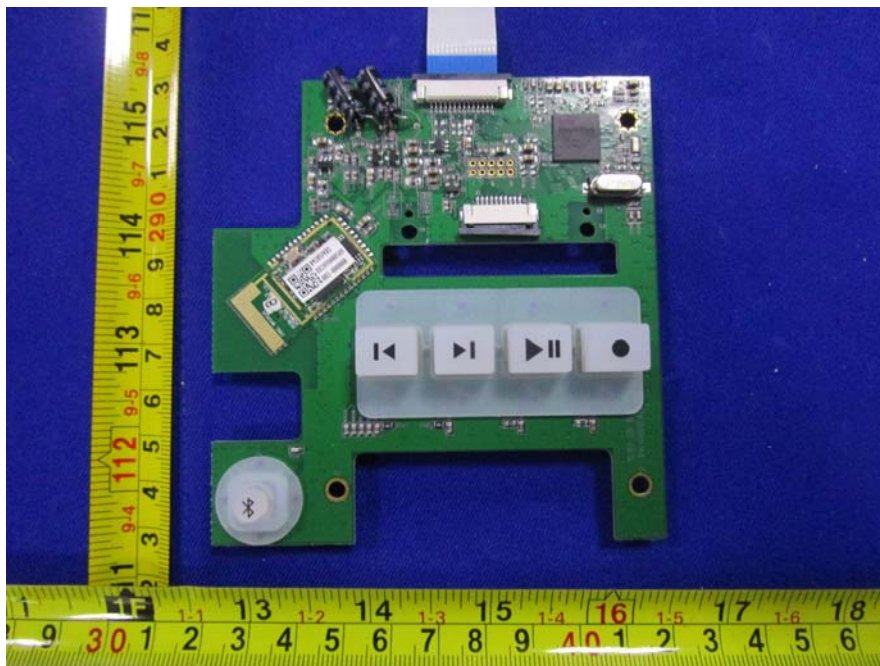
EUT –Multi-Track USB PCB Top View



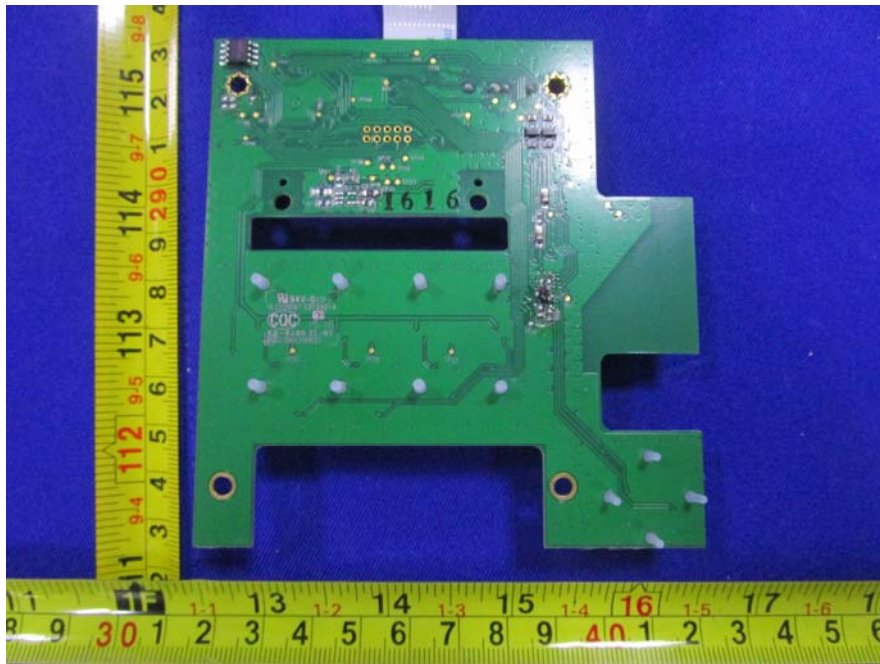
EUT –Multi-Track USB PCB Bottom View



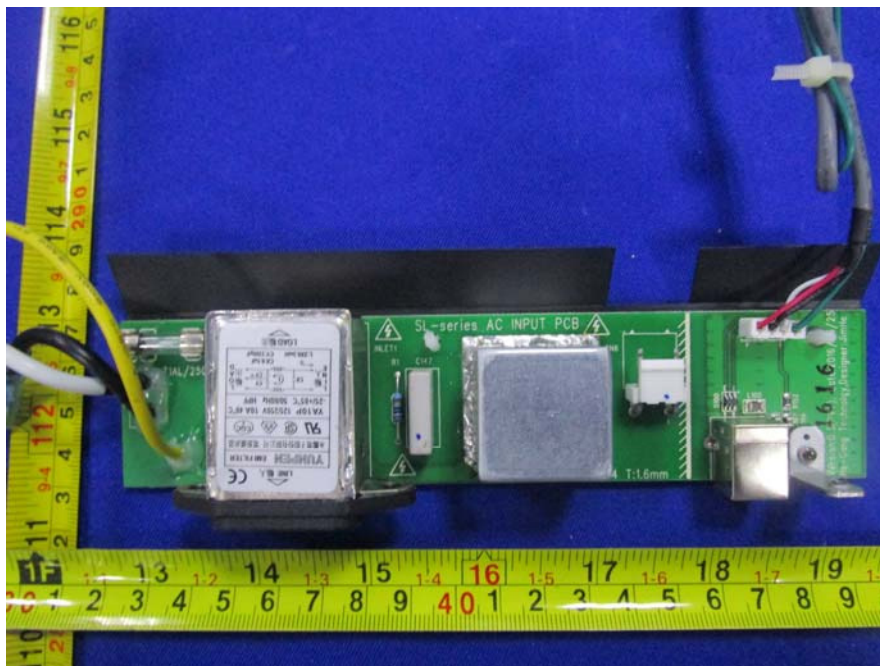
EUT –SD&BT PCB Top View



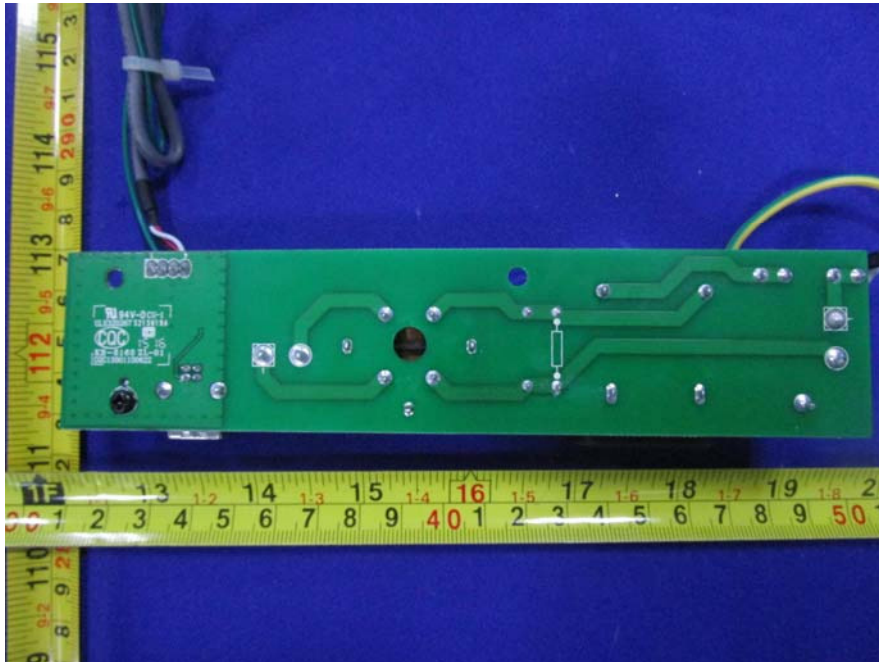
EUT -SD&BT PCB Bottom View



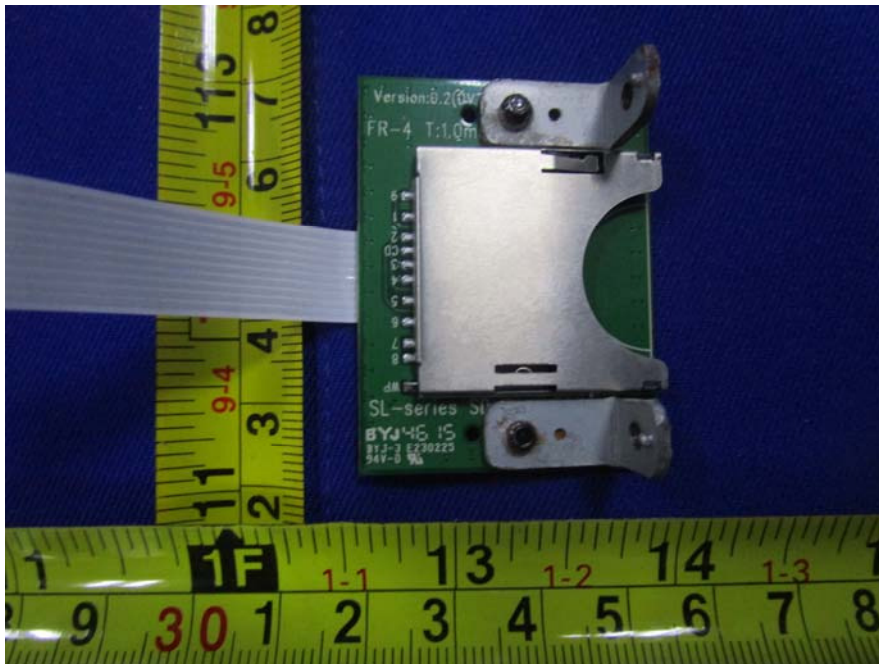
EUT -AC Input PCB Top View



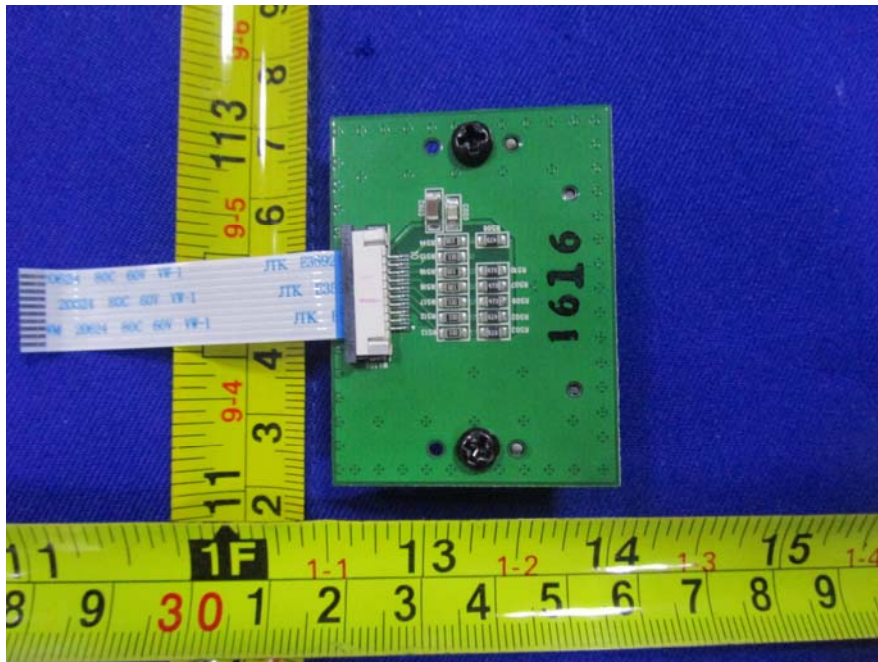
EUT –AC Input PCB Bottom View



EUT –SD Card PCB Top View



EUT -SD Card PCB Bottom View



EUT -Antenna View



EUT -BT Chip View

