

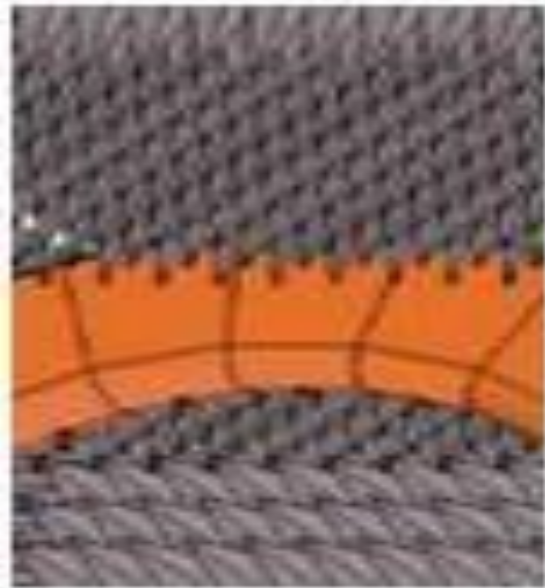
Product Name: FPC Antenna

Model Name: ARG78

Material: FPC

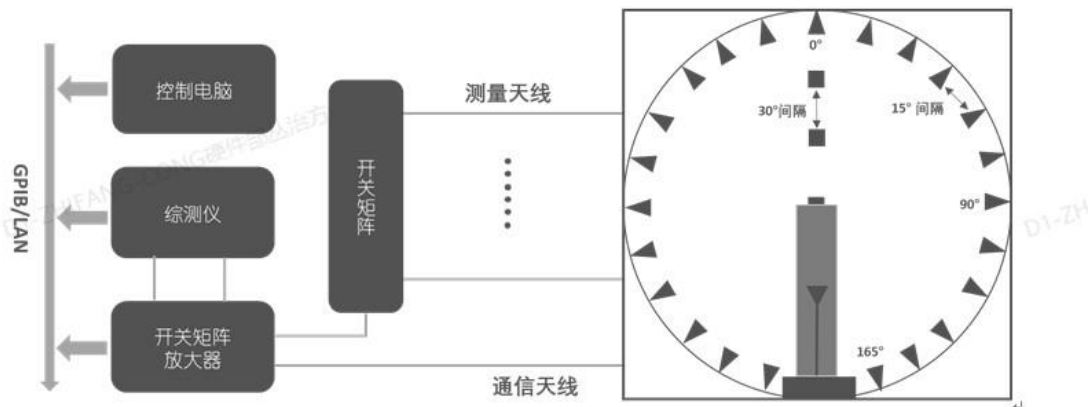
Manufacturer: Zhejiang Haitong communications
electronic Co.,Ltd.

1:Chamber room introduction and testing scope



Our company has a number of OTA test darkrooms, ranging from 400MHz to 8.5GHz, which can provide passive test and active test (including OTA overall 2G, 3G, 4G, 5GNR test, WIFI multi-mode test, GPS active test, Bluetooth active test, which can provide antenna gain and efficiency. 2D orientation and apple chart analysis and upper and lower hemisphere efficiency values, mutual disturbance correlation coefficient test items.

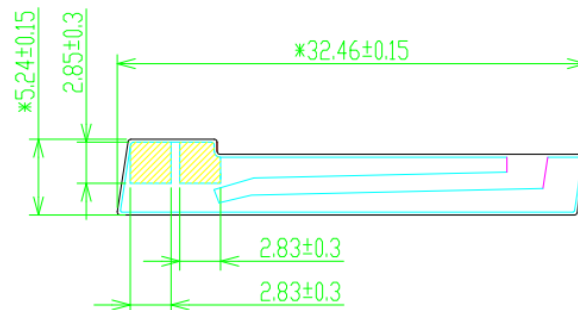
2: Test system introduction:



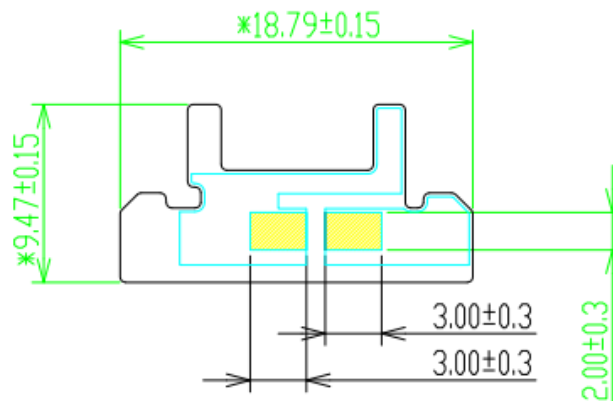
The figure above shows the connection and control process between the darkroom of our company and the testing system and computer. The testing system has the characteristics of accurate, fast and simple testing. The operation interface is simple and humanized.

3:Antenna size

2.4G Antenna



5G Antenna



4:Antenna information

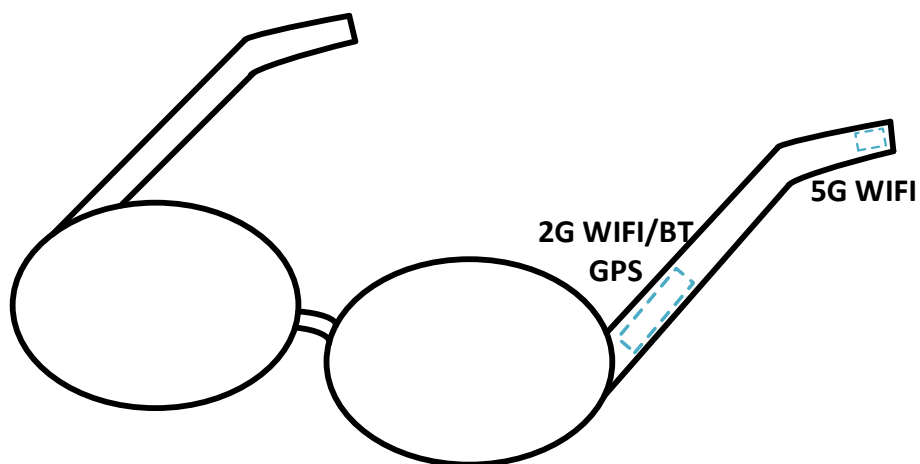
4.1 Antenna Gain

2.4G WIFI/BT ANT		
Freq (MHz)	Effi (dB)	Gain (dBi)
2400	-7.11	-1.76
2405	-6.17	-0.89
2410	-6.09	-0.69
2415	-6.32	-1.16
2420	-5.68	-0.6
2425	-5.32	-0.3
2430	-5.52	-0.56
2435	-5.35	-0.46
2440	-5.1	-0.42
2445	-5	-0.34
2450	-5.25	-0.73
2455	-5.44	-1.17
2460	-5.09	-1.1
2465	-5.47	-1.7
2470	-6.02	-2.27
2475	-5.25	-1.75
2480	-5.71	-1.84

5G WIFI ANT					
Freq (MHz)	Effi (dB)	Peak Gain (dBi)	Freq (MHz)	Effi (dB)	Peak Gain (dBi)
5150	-6.02	-1.83	5510	-5.35	-0.24
5160	-5.68	-1.18	5520	-5.01	0.67
5170	-5.44	-0.85	5530	-5.6	-0.32
5180	-5.38	-1	5540	-5.32	0.14
5190	-4.66	-0.19	5550	-5.74	-0.47
5200	-4.81	-0.52	5560	-5.31	0.01
5210	-4.52	-0.01	5570	-5.19	0.05
5220	-4.63	-0.12	5580	-5.25	0.16
5230	-4.6	-0.2	5590	-5.19	-0.01
5240	-4.62	-0.34	5600	-5.15	0.21
5250	-4.84	-0.84	5610	-4.91	0.42
5260	-4.75	-1.27	5620	-4.84	0.37
5270	-4.65	-1.33	5630	-5.03	0.11
5280	-4.87	-1.26	5640	-4.59	0.33

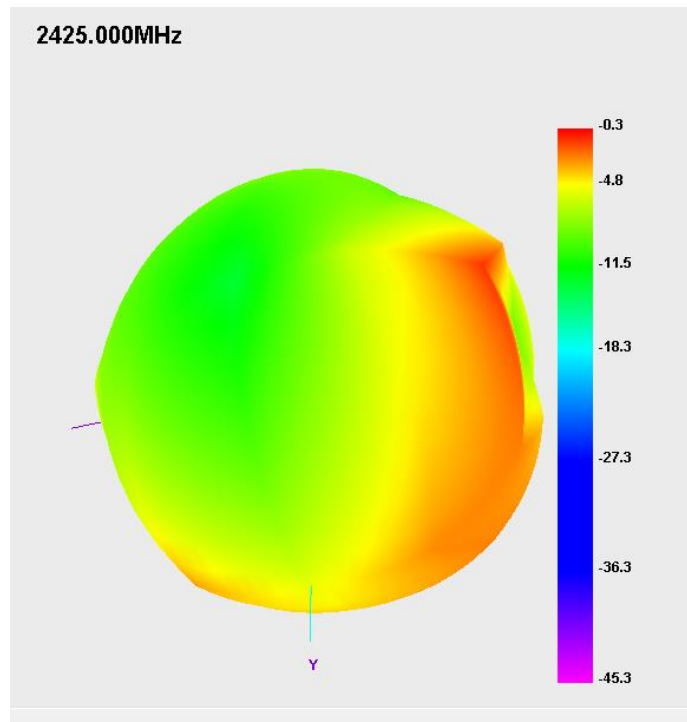
5290	-4.72	-1.01	5650	-4.5	0.7
5300	-5.16	-1.4	5660	-4.67	0.16
5310	-4.59	-0.52	5670	-4.75	0.18
5320	-4.28	0.16	5680	-5.05	0.11
5330	-4.6	-0.37	5690	-4.95	0.09
5340	-4.69	0.07	5700	-4.97	0.27
5350	-4.42	0.3	5710	-4.89	0.86
5360	-4.51	0.34	5720	-4.47	1.19
5370	-3.97	1.06	5730	-4.79	1.25
5380	-4.76	0.09	5740	-4.42	1.34
5390	-5.1	0.13	5750	-4.52	1.31
5400	-4.68	0.05	5760	-4.76	1.44
5410	-4.92	0.22	5770	-4.22	1.5
5420	-4.44	0.6	5780	-4.42	1.16
5430	-5.08	0.17	5790	-4.17	1.37
5440	-5.14	-0.2	5800	-4.3	1.18
5450	-5.47	-0.01	5810	-4.65	0.62
5460	-5.29	0.05	5820	-4.32	1.07
5470	-4.97	0.35	5830	-4.5	0.72
5480	-5.33	-0.17	5840	-4.38	0.93
5490	-5.5	-0.34	5850	-4.72	0.56
5500	-5.32	0.03			

4.2 Antenna placement:

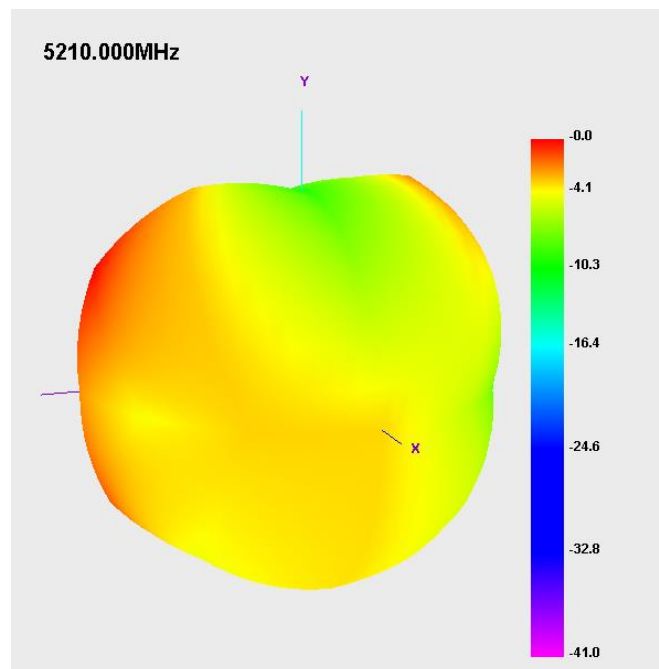


4.3 3D Pattern

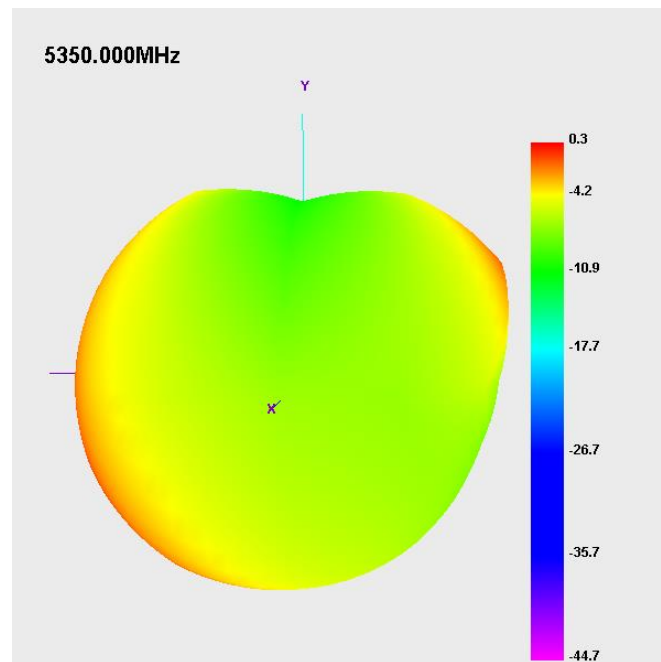
2.4G WIFI/BT (Frequency=2425MHz)



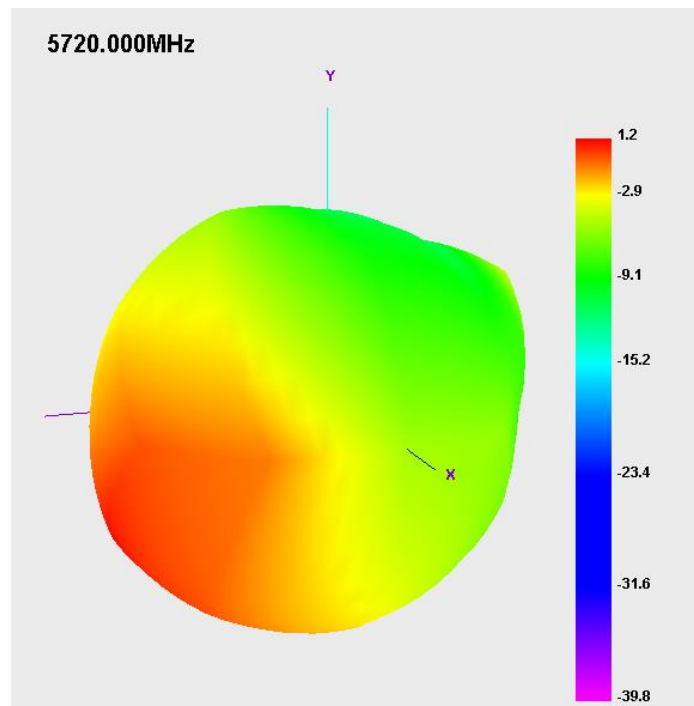
5G WIFI (Frequency=5210MHz)



5G WIFI (Frequency=5350MHz)



5G WIFI (Frequency=5720MHz)



5G WIFI (Frequency=5770MHz)

5770.000MHz

