

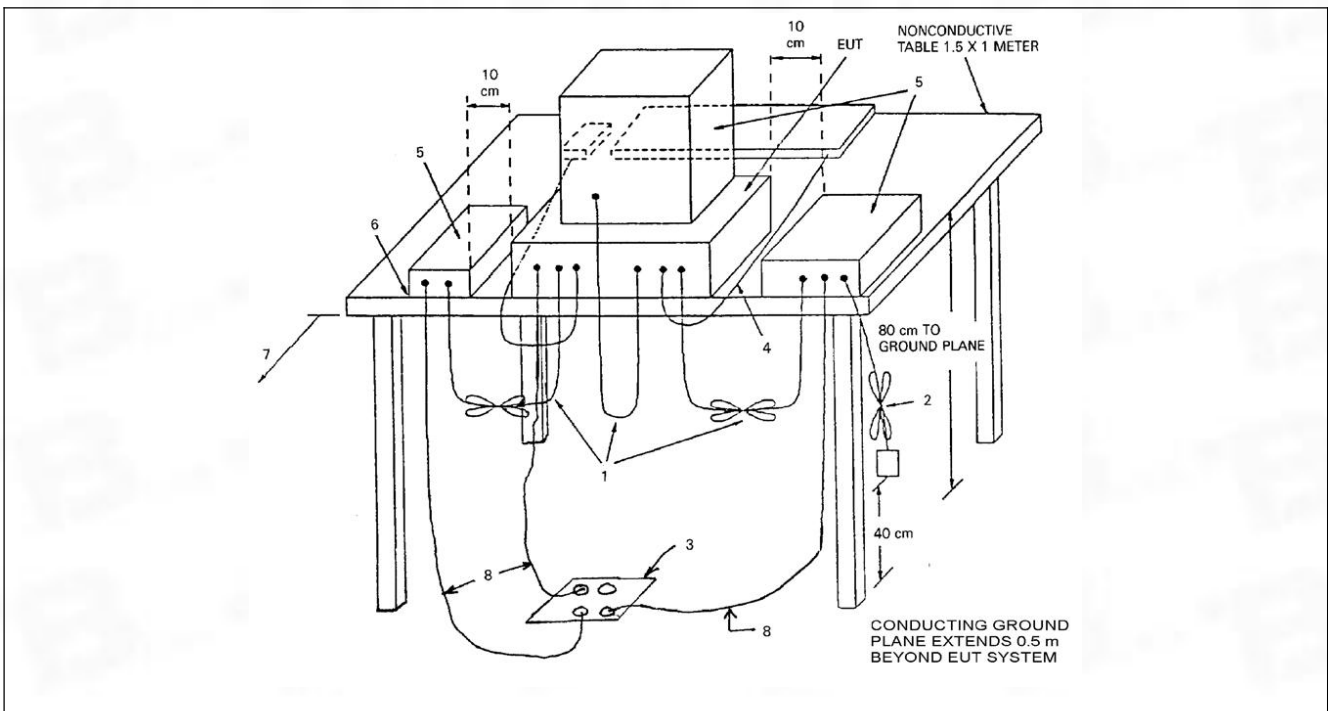
5.3 Radiated emissions (Above 1GHz)

Test Requirement:	15.109, Class B			
Test Method:	ANSI C63.4			
Test Limit:	Frequency of emission (MHz)	Field strength @3m		
		Average (uV/m)	Average (dBuV/m)	Peak (dBuV/m)
	Above 1GHz	500	54	74
Procedure:	<p>An initial pre-scan was performed in the chamber using the spectrum analyser in peak detection mode. For below 1GHz test, Quasi-peak measurements were conducted based on the peak sweep graph. The EUT was measured by BiConiLog antenna with 2 orthogonal polarities. For above 1GHz test, Average measurements were conducted based on the peak sweep graph. The EUT was measured by Horn antenna with 2 orthogonal polarities.</p> <p>Remark: Level= Read Level+ Cable Loss+ Antenna Factor- Preamp Factor</p>			

5.3.1 E.U.T. Operation:

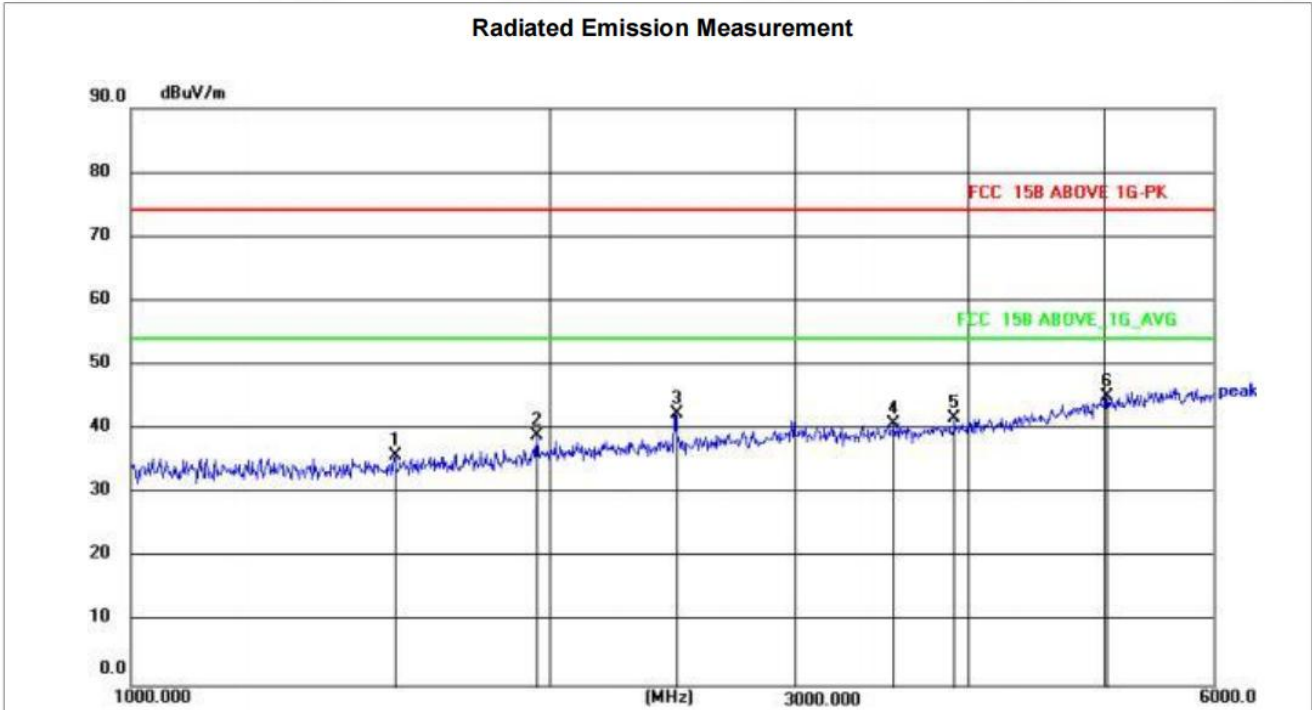
Operating Environment:	
Temperature:	22.2 °C
Humidity:	54.7 %
Atmospheric Pressure:	1010 mbar

5.3.2 Test Setup Diagram:



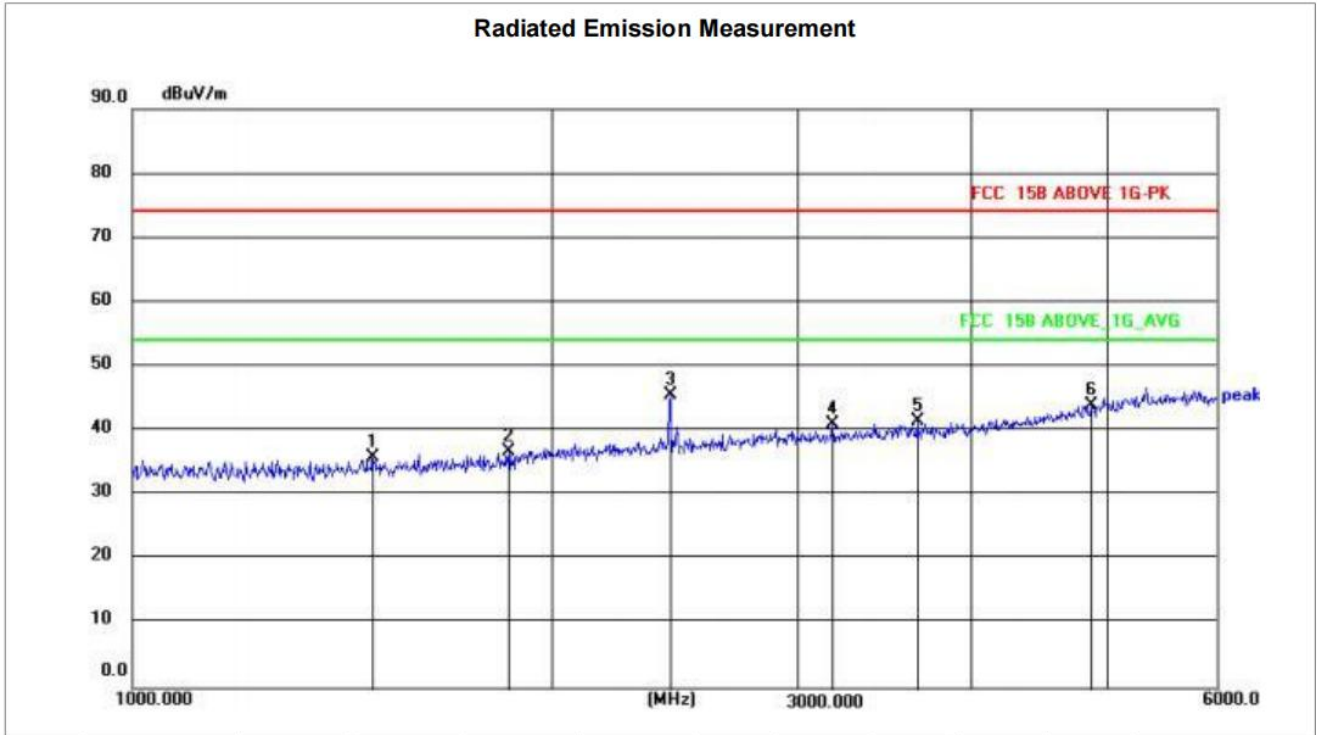
5.3.3 Test Data:

TM1 / Polarization: Horizontal



No.	Frequency (MHz)	Reading (dBuV)	Factor (dB/m)	Level (dBuV/m)	Limit (dBuV/m)	Margin (dB)	Detector	Height (cm)	Azimuth (deg.)	P/F	Remark
1	1548.349	50.40	-14.55	35.85	74.00	38.15	peak	200	105	P	
2	1957.973	51.48	-12.45	39.03	74.00	34.97	peak	200	136	P	
3	2462.692	53.11	-10.67	42.44	74.00	31.56	peak	200	147	P	
4	3536.687	48.48	-7.70	40.78	74.00	33.22	peak	200	158	P	
5	3909.967	48.64	-6.97	41.67	74.00	32.33	peak	200	136	P	
6 *	5033.759	48.73	-3.60	45.13	74.00	28.87	peak	200	205	P	

TM1 / Polarization: Vertical



No.	Frequency (MHz)	Reading (dBuV)	Factor (dB/m)	Level (dBuV/m)	Limit (dBuV/m)	Margin (dB)	Detector	Height (cm)	Azimuth (deg.)	P/F	Remark
1	1485.838	50.56	-14.74	35.82	74.00	38.18	peak	100	158	P	
2	1862.166	50.10	-13.26	36.84	74.00	37.16	peak	100	236	P	
3 *	2431.997	56.24	-10.78	45.46	74.00	28.54	peak	100	198	P	
4	3181.894	49.46	-8.33	41.13	74.00	32.87	peak	100	179	P	
5	3659.161	48.92	-7.45	41.47	74.00	32.53	peak	100	148	P	
6	4874.002	48.18	-4.12	44.06	74.00	29.94	peak	100	236	P	

6 Test Setup Photos

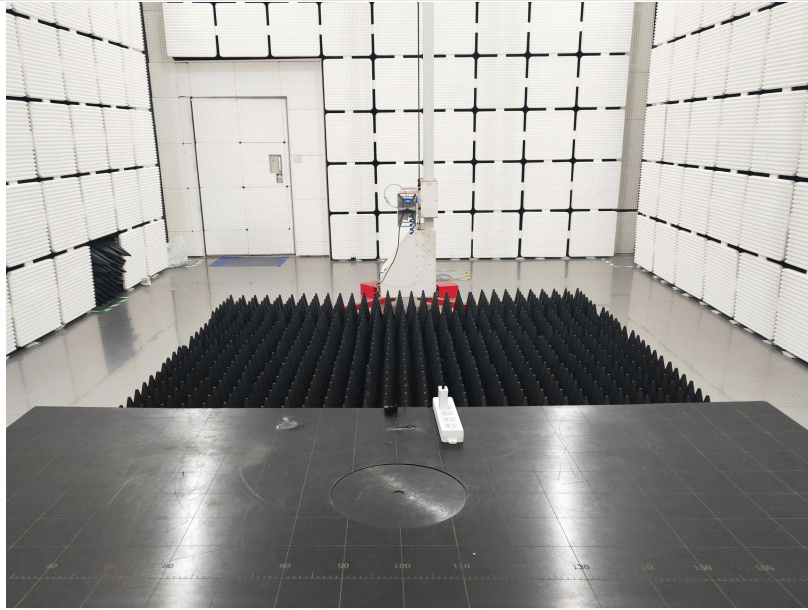
Conducted emissions on AC mains



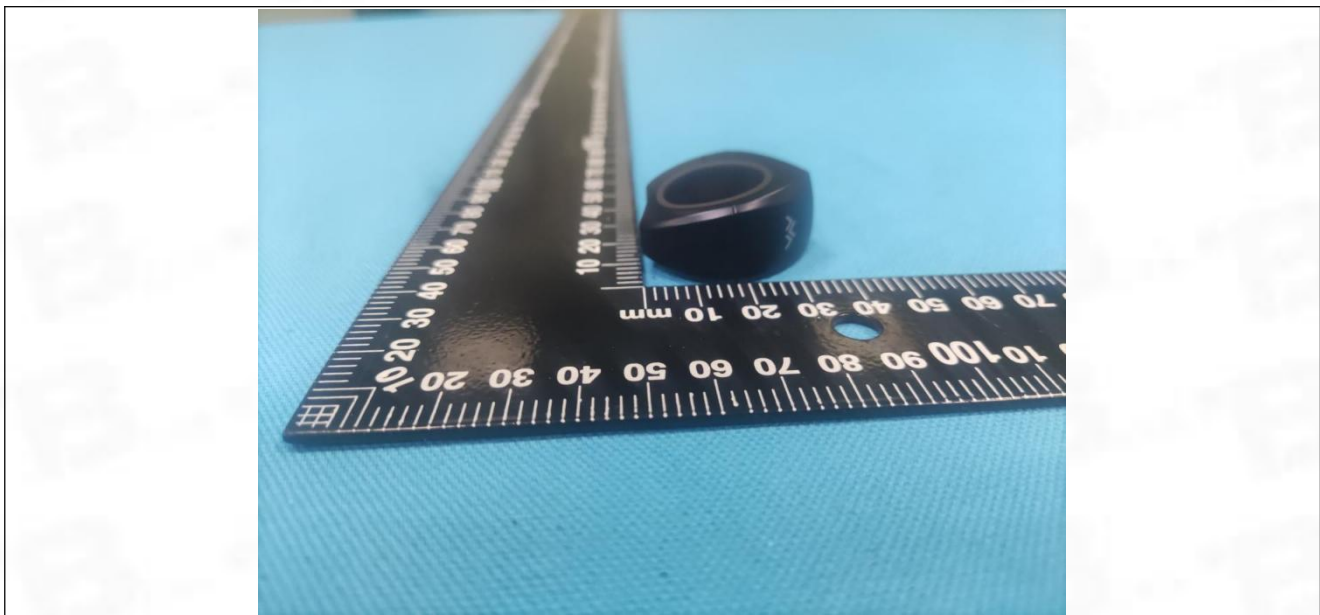
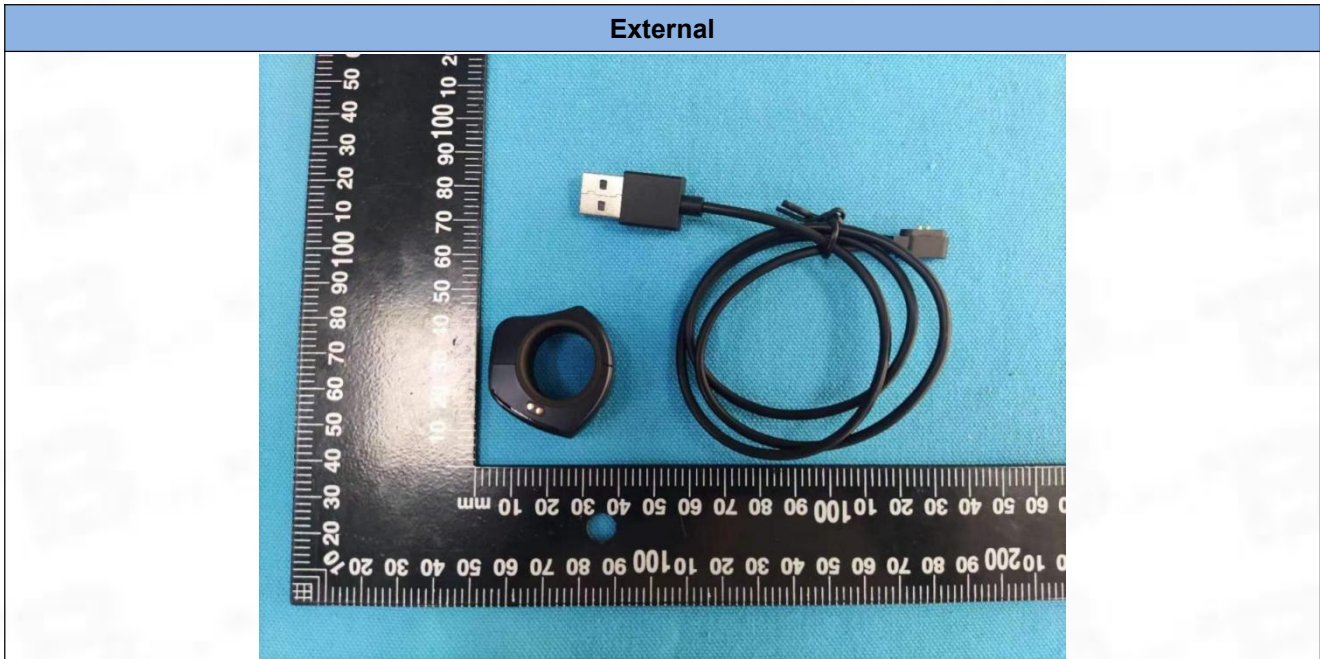
Radiated emissions (Below 1GHz)

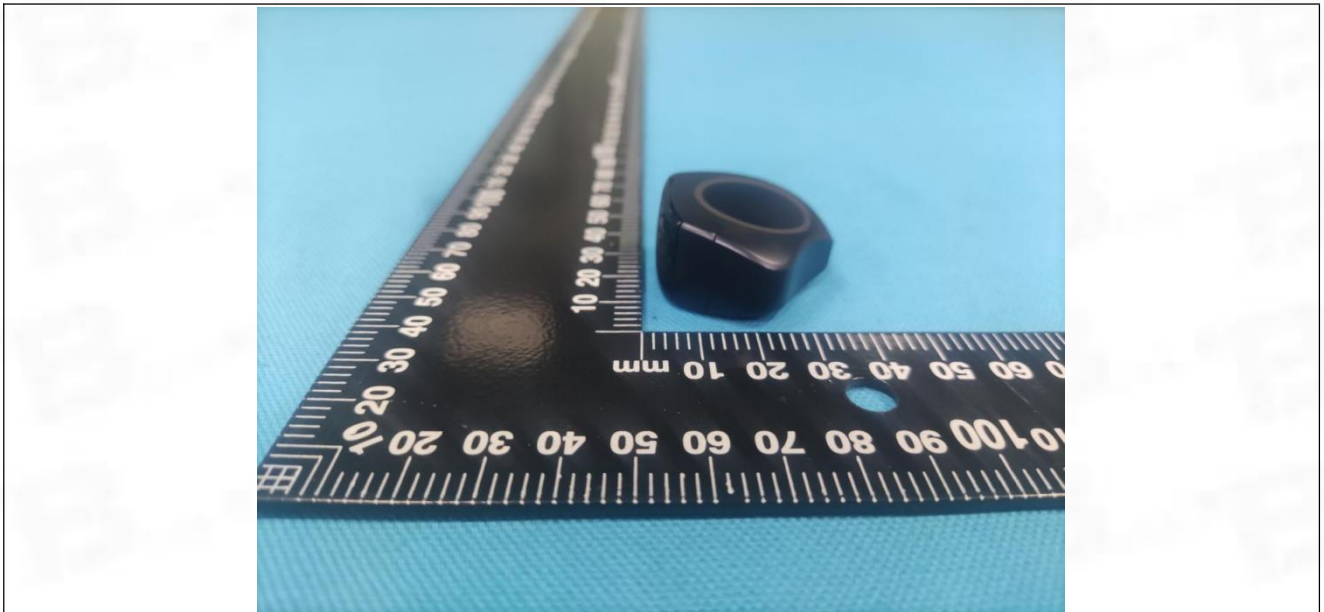
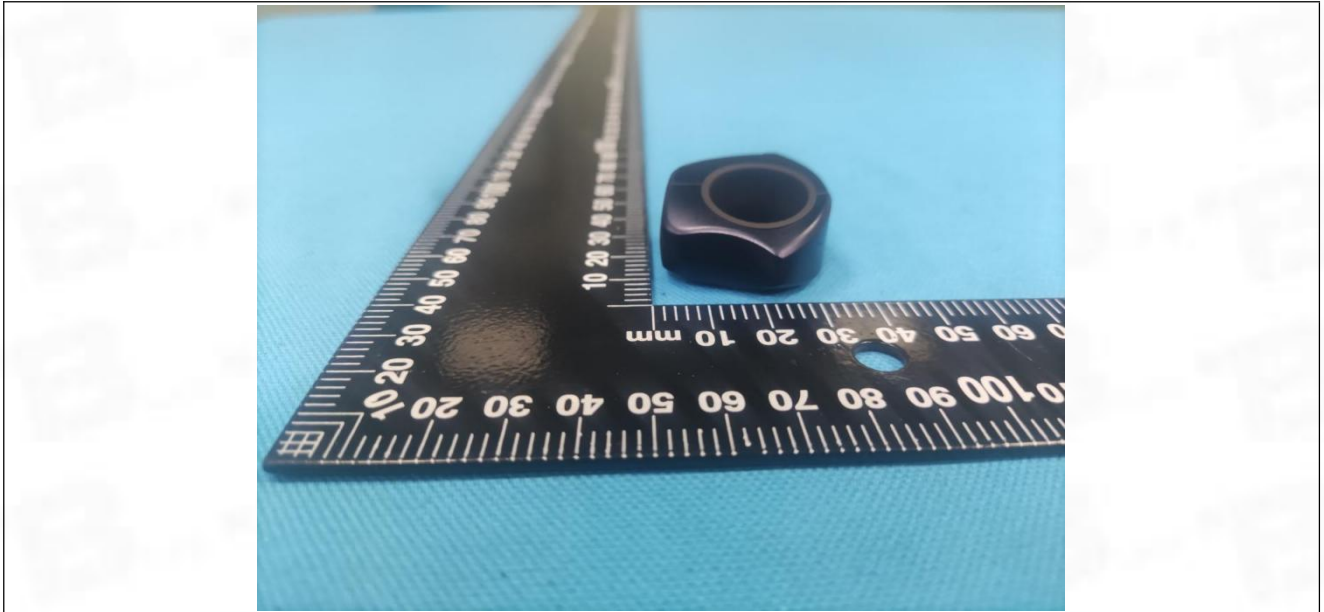


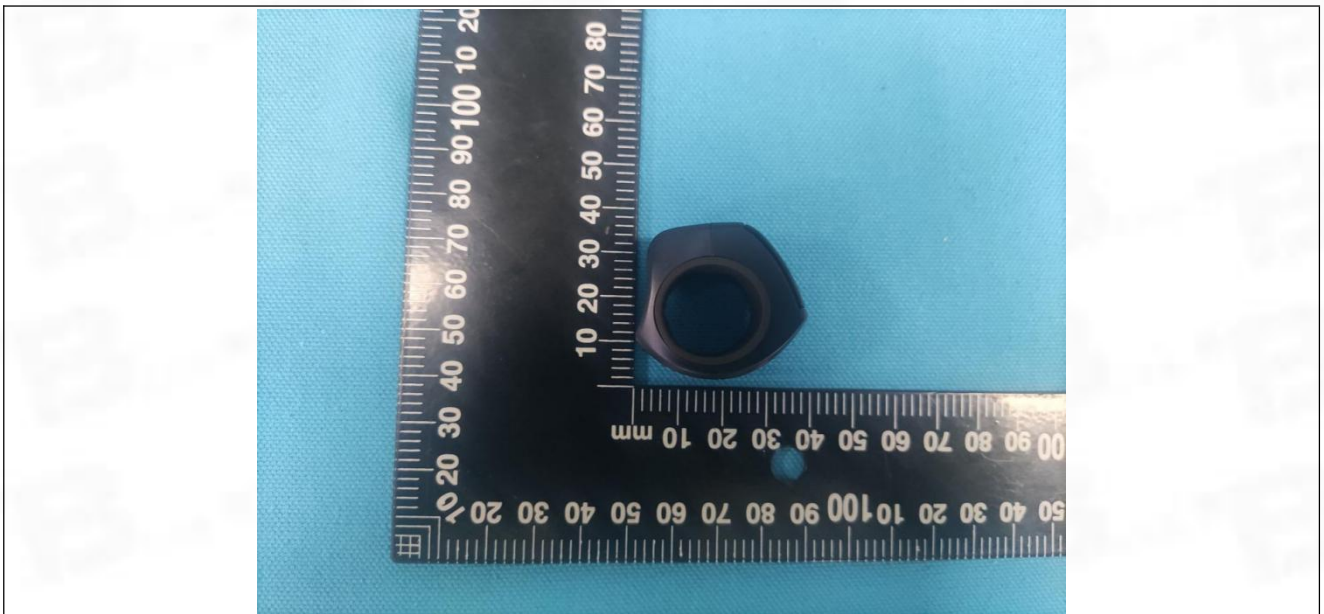
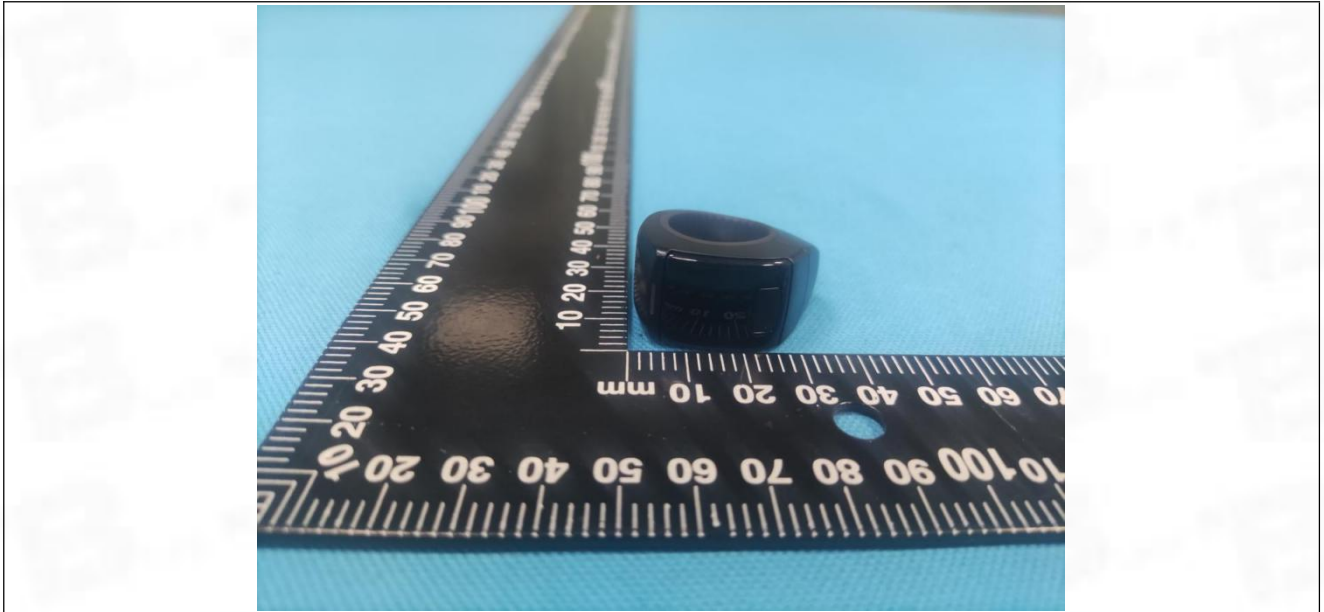
Radiated emissions (Above 1GHz)

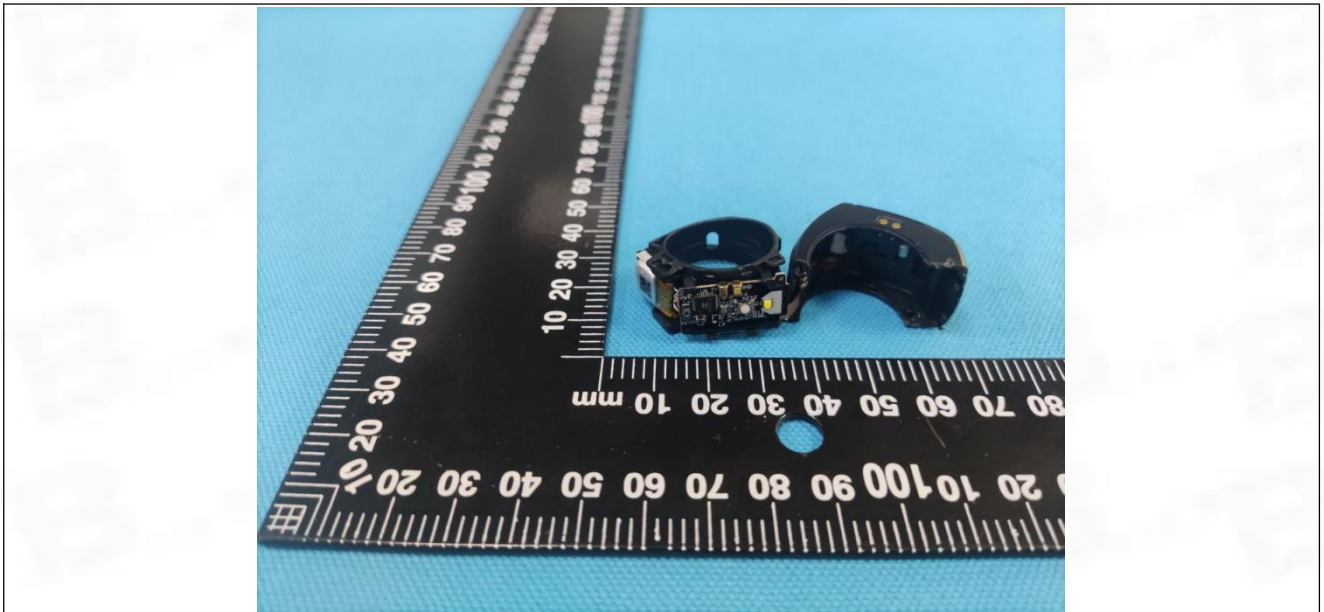


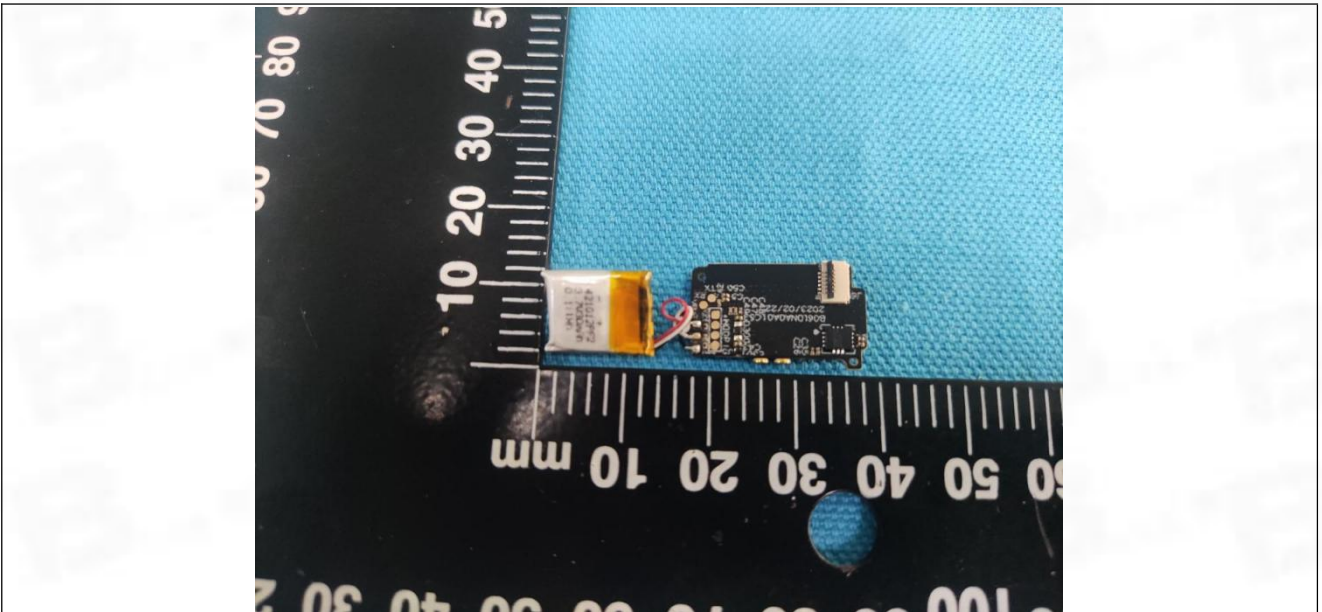
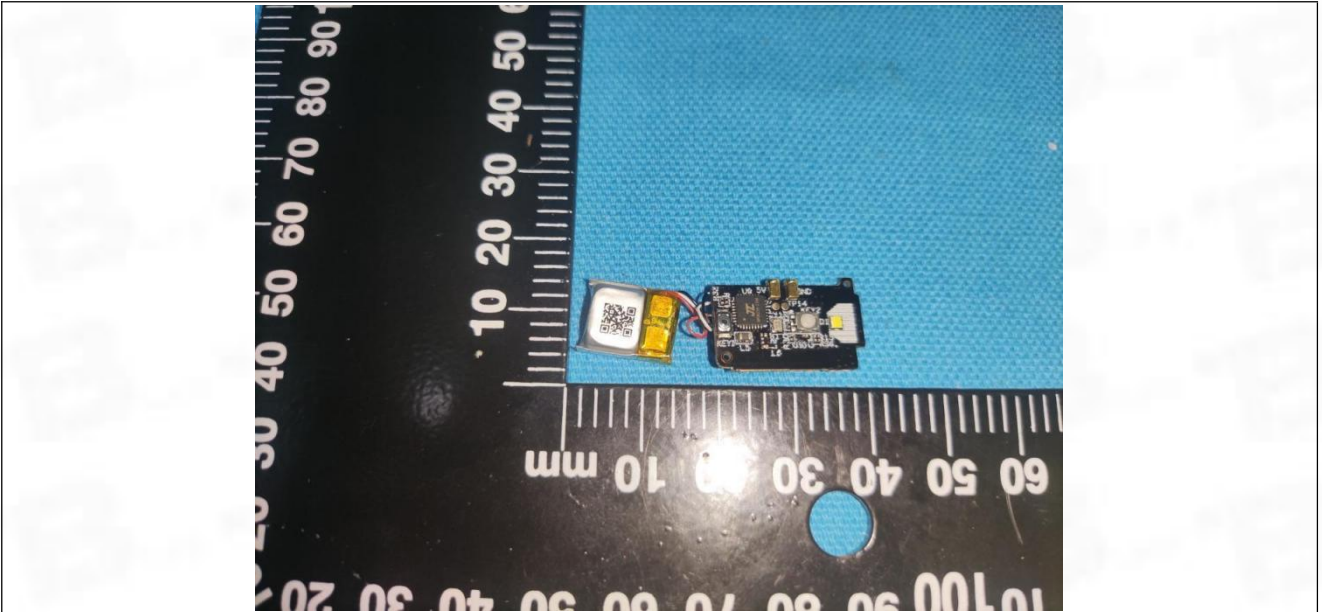
7 EUT Constructional Details (EUT Photos)

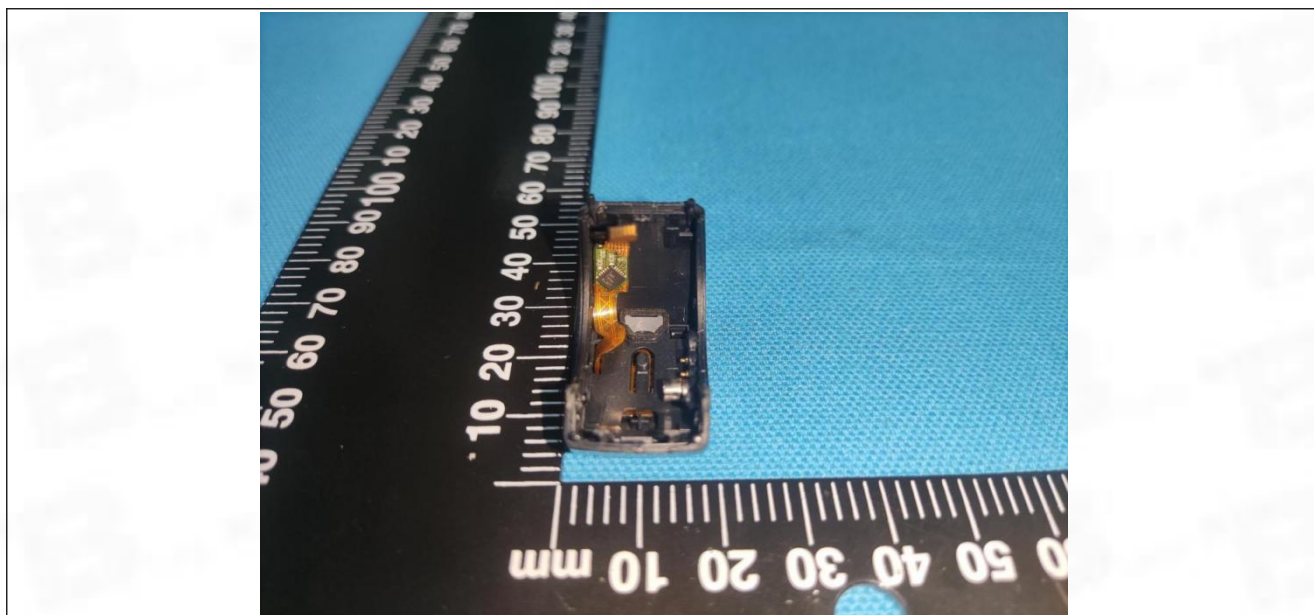














Test Report Number: BTF230718E00401



BTF Testing Lab (Shenzhen) Co., Ltd.

F101, 201 and 301, Building 1, Block 2, Tantou Industrial Park, Tantou Community, Songgang Street,
Bao'an District, Shenzhen, China

www.btf-lab.com

-- END OF REPORT --