



# SAR TEST REPORT

No. I22Z60568-SEM01

For

**TCL Communication Ltd.**

**GSM/UMTS/LTE Mobile phone**

**Model Name: 4058P**

with

**Hardware Version: 03**

**Software Version: RL3W**

**FCC ID: 2ACCJN064**

**Issued Date: 2022-5-19**

**Note:**

The test results in this test report relate only to the devices specified in this report. This report shall not be reproduced except in full without the written approval of CTTL.

The report must not be used by the client to claim product certification, approval, or endorsement by NVLAP, NIST, or any agency of the U.S.Government.

**Test Laboratory:**

**CTTL, Telecommunication Technology Labs, CAICT**

No. 52, Huayuan North Road, Haidian District, Beijing, P. R. China 100191.

Tel:+86(0)10-62304633-2512, Fax:+86(0)10-62304633-2504

Email: [ctl\\_terminals@caict.ac.cn](mailto:ctl_terminals@caict.ac.cn), website: [www.caict.ac.cn](http://www.caict.ac.cn)

**REPORT HISTORY**

<b>Report Number</b>	<b>Revision</b>	<b>Issue Date</b>	<b>Description</b>
I22Z60568-SEM01	Rev.0	2022-5-9	Initial creation of test report
I22Z60568-SEM01	Rev.1	2022-5-17	<ol style="list-style-type: none"><li>1. Revise the tune up power of GSM850 GPRS/EGPRS(GMSK) 2-4TX slot and GSM1900 GPRS(GMSK) 2TX on page 27-28.</li><li>2. Revise the conductive power and tune up power of WCDMA B2/B5 on page29.</li></ol>
I22Z60568-SEM01	Rev.2	2022-5-19	<ol style="list-style-type: none"><li>1. Revise the tune up power of GSM1900 GPRS(GMSK) 2TX on page 28.</li></ol>

## TABLE OF CONTENT

<b>1 TEST LABORATORY .....</b>	<b>5</b>
1.1 TESTING LOCATION .....	5
1.2 TESTING ENVIRONMENT.....	5
1.3 PROJECT DATA .....	5
1.4 SIGNATURE.....	5
<b>2 STATEMENT OF COMPLIANCE .....</b>	<b>6</b>
<b>3 CLIENT INFORMATION .....</b>	<b>8</b>
3.1 APPLICANT INFORMATION .....	8
3.2 MANUFACTURER INFORMATION .....	8
<b>4 EQUIPMENT UNDER TEST (EUT) AND ANCILLARY EQUIPMENT (AE) .....</b>	<b>9</b>
4.1 ABOUT EUT.....	9
4.2 INTERNAL IDENTIFICATION OF EUT USED DURING THE TEST .....	10
4.3 INTERNAL IDENTIFICATION OF AE USED DURING THE TEST .....	10
<b>5 TEST METHODOLOGY .....</b>	<b>11</b>
5.1 APPLICABLE LIMIT REGULATIONS.....	11
5.2 APPLICABLE MEASUREMENT STANDARDS .....	11
<b>6 SPECIFIC ABSORPTION RATE (SAR).....</b>	<b>12</b>
6.1 INTRODUCTION.....	12
6.2 SAR DEFINITION.....	12
<b>7 TISSUE SIMULATING LIQUIDS .....</b>	<b>13</b>
7.1 TARGETS FOR TISSUE SIMULATING LIQUID.....	13
7.2 DIELECTRIC PERFORMANCE .....	13
<b>8 SYSTEM VERIFICATION .....</b>	<b>17</b>
8.1 SYSTEM SETUP.....	17
8.2 SYSTEM VERIFICATION.....	18
<b>9 MEASUREMENT PROCEDURES .....</b>	<b>19</b>
9.1 TESTS TO BE PERFORMED .....	19
9.2 GENERAL MEASUREMENT PROCEDURE.....	21
9.3 WCDMA MEASUREMENT PROCEDURES FOR SAR .....	22
9.4 SAR MEASUREMENT FOR LTE.....	23
9.5 BLUETOOTH & WI-FI MEASUREMENT PROCEDURES FOR SAR .....	25
9.6 POWER DRIFT.....	25
<b>10 AREA SCAN BASED 1-G SAR.....</b>	<b>26</b>
10.1 REQUIREMENT OF KDB.....	26
10.2 FAST SAR ALGORITHMS .....	26



<b>11 CONDUCTED OUTPUT POWER.....</b>	<b>27</b>
11.1 GSM MEASUREMENT RESULT .....	27
11.2 WCDMA MEASUREMENT RESULT .....	29
11.3 LTE MEASUREMENT RESULT .....	30
11.4 WI-FI AND BT MEASUREMENT RESULT .....	42
<b>12 SIMULTANEOUS TX SAR CONSIDERATIONS.....</b>	<b>46</b>
12.1 INTRODUCTION.....	46
12.2 TRANSMIT ANTENNA SEPARATION DISTANCES.....	46
<b>13 EVALUATION OF SIMULTANEOUS.....</b>	<b>47</b>
<b>14 SAR TEST RESULT .....</b>	<b>48</b>
14.1 SAR RESULTS FOR 2G/3G/4G .....	49
14.2 SAR EVALUATION FOR WIFI.....	56
14.3 SAR EVALUATION FOR BT .....	63
<b>15 SAR MEASUREMENT VARIABILITY.....</b>	<b>64</b>
<b>16 MEASUREMENT UNCERTAINTY .....</b>	<b>65</b>
16.1 MEASUREMENT UNCERTAINTY FOR NORMAL SAR TESTS (300MHZ~3GHZ).....	65
16.2 MEASUREMENT UNCERTAINTY FOR NORMAL SAR TESTS (3~6GHZ) .....	66
16.3 MEASUREMENT UNCERTAINTY FOR FAST SAR TESTS (300MHZ~3GHZ).....	67
16.4 MEASUREMENT UNCERTAINTY FOR FAST SAR TESTS (3~6GHZ) .....	68
<b>17 MAIN TEST INSTRUMENTS.....</b>	<b>70</b>
<b>ANNEX A GRAPH RESULTS.....</b>	<b>71</b>
<b>ANNEX B SYSTEM VERIFICATION RESULTS .....</b>	<b>93</b>
<b>ANNEX C SAR MEASUREMENT SETUP .....</b>	<b>102</b>
<b>ANNEX D POSITION OF THE WIRELESS DEVICE IN RELATION TO THE PHANTOM .....</b>	<b>108</b>
<b>ANNEX E EQUIVALENT MEDIA RECIPES.....</b>	<b>111</b>
<b>ANNEX F SYSTEM VALIDATION .....</b>	<b>112</b>
<b>ANNEX G PROBE CALIBRATION CERTIFICATE.....</b>	<b>113</b>
<b>ANNEX H DIPOLE CALIBRATION CERTIFICATE .....</b>	<b>122</b>
<b>ANNEX I ACCREDITATION CERTIFICATE.....</b>	<b>165</b>

## 1 Test Laboratory

### 1.1 Testing Location

Company Name:	CTTL(Shouxiang)
Address:	No. 51 Shouxiang Science Building, Xueyuan Road, Haidian District, Beijing, P. R. China100191

### 1.2 Testing Environment

Temperature:	18°C~25°C,
Relative humidity:	30%~ 70%
Ground system resistance:	< 0.5 $\Omega$
Ambient noise & Reflection:	< 0.012 W/kg

### 1.3 Project Data

Project Leader:	Qi Dianyuan
Test Engineer:	Yao Juming
Testing Start Date:	April 15, 2022
Testing End Date:	April 28, 2022

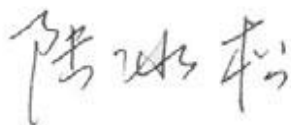
### 1.4 Signature



Yao Juming  
(Prepared this test report)



Qi Dianyuan  
(Reviewed this test report)



Lu Bingsong  
Deputy Director of the laboratory  
(Approved this test report)

## 2 Statement of Compliance

The maximum results of Specific Absorption Rate (SAR) found during testing for TCL Communication Ltd. GSM/UMTS/LTE Mobile phone 4058P are as follows:

**Table 2.1: Highest Reported SAR (1g)**

Technology Band	Head	Body-Worn	Equipment Class
GSM850	<b>0.48</b>	<b>0.77</b>	PCE
GSM1900	<b>0.28</b>	<b>1.12</b>	
WCDMA1900	<b>0.49</b>	<b>1.00</b>	
WCDMA 850	<b>0.56</b>	<b>0.84</b>	
LTE Band2	<b>0.58</b>	<b>1.00</b>	
LTE Band5	<b>0.66</b>	<b>0.78</b>	
LTE Band12	<b>0.25</b>	<b>0.48</b>	
LTE Band13	<b>0.48</b>	<b>0.51</b>	
LTE Band66	<b>0.43</b>	<b>1.01</b>	
WLAN 2.4GHz	<b>0.61</b>	<b>0.15</b>	DTS
WLAN 5GHz	<b>0.64</b>	<b>0.34</b>	NII

The SAR values found for the Mobile Phone are below the maximum recommended levels of 1.6 W/kg as averaged over any 1g tissue according to the ANSI C95.1-1992.

For body operation, this device has been tested and meets FCC RF exposure guidelines when used with any accessory that contains no metal and which provides a minimum separation distance of 15 mm between this device and the body of the user. Use of other accessories may not ensure compliance with FCC RF exposure guidelines.

The EUT battery must be fully charged and checked periodically during the test to ascertain uniform power output.

The measurement together with the test system set-up is described in annex C of this test report. A detailed description of the equipment under test can be found in chapter 4 of this test report. The highest reported SAR value is obtained at the case of **(Table 2.1)**, and the values are:

**Head: 0.66 W/kg (1g)**

**Body: 1.12 W/kg (1g)**

Remark:

This device supports both LTE B4 and LTE B66. Since the supported frequency span for LTE B4 falls completely within the supports frequency span for LTE B66, both LTE bands have the same target power, and both LTE bands share the same transmission path; therefore, SAR was only assessed for LTE B66.

**Table 2.2: The sum of SAR values for Main antenna + WiFi-2.4G (1g)**

	Position	Main antenna	WiFi-2.4G	Sum
<b>Highest SAR value for Head</b>	Right head, Cheek (LTE B5)	0.66	0.61	<b>1.27</b>
<b>Highest SAR value for Body</b>	Rear 15mm (GSM1900)	1.12	0.08	<b>1.20</b>

**Table 2.3: The sum of SAR values for Main antenna + WiFi5G + BT (1g)**

	Position	Main antenna	WiFi-5G	BT	Sum
<b>Maximum reported SAR value for Head</b>	Right head, Cheek (LTE B5)	0.66	0.64	<0.01	<b>1.30</b>
<b>Maximum reported SAR value for Body</b>	Rear 15mm (GSM1900)	1.12	0.18	<0.01	<b>1.30</b>

**Conclusion:**

According to the above tables, the sum of reported SAR values is <math><1.6\text{W/kg}</math>. So the simultaneous transmission SAR with volume scans is not required.

According to the above tables, the highest sum of reported SAR values is **1.30 W/kg (1g)**. The detail for simultaneous transmission consideration is described in chapter 13.

### 3 Client Information

#### 3.1 Applicant Information

Company Name:	TCL Communication Ltd.
Address/Post:	5/F, Building 22E, 22 Science Park East Avenue, Hong Kong Science Park, Shatin, NT, Hong Kong
Contact Person:	Peter yang
Contact Email:	peter.yang@tcl.com
Telephone:	+86 755 3664 5759
Fax:	+86 755 3661 2000-81722

#### 3.2 Manufacturer Information

Company Name:	TCL Communication Ltd.
Address/Post:	5/F, Building 22E, 22 Science Park East Avenue, Hong Kong Science Park, Shatin, NT, Hong Kong
Contact Person:	Peter yang
Contact Email:	peter.yang@tcl.com
Telephone:	+86 755 3664 5759
Fax:	+86 755 3661 2000-81722



## 4 Equipment Under Test (EUT) and Ancillary Equipment (AE)

### 4.1 About EUT

Description:	GSM/UMTS/LTE Mobile phone
Model name:	4058P
Operating mode(s):	GSM850/900/1800/1900, WCDMA850/1900 LTE Band 2/4/5/12/13/66 BT, Wi-Fi2.4G/5G
Tested Tx Frequency:	824 – 849 MHz (GSM 850)
	1850 – 1910 MHz (GSM 1900)
	824 – 849 MHz (WCDMA 850 Band V)
	1850 – 1910 MHz (WCDMA1900 Band II)
	1850.7 – 1909.3 MHz (LTE Band 2)
	824.7 – 848.3 MHz (LTE Band 5)
	699.7 – 715.3 MHz (LTE Band 12)
	779.5 – 784.5 MHz (LTE Band 13)
	1710.7 – 1779.3 MHz (LTE Band 66)
	2412 – 2462 MHz (Wi-Fi 2.4G)
	5180 – 5240 MHz (Wi-Fi 5.2G)
	5260 – 5320 MHz (Wi-Fi 5.3G)
	5500 – 5720 MHz (Wi-Fi 5.5G)
5745 – 5825 MHz (Wi-Fi 5.8G)	
2400 – 2483.5 MHz (Bluetooth)	
GPRS/EGPRS Multislot Class:	12
Test device Production information:	Production unit
Device type:	Portable device
Antenna type:	Integrated antenna
Hotspot mode:	Support

#### 4.2 Internal Identification of EUT used during the test

EUT ID*	IMEI	HW Version	SW Version
EUT1	016211000012695	03	RL3W
EUT2	016211000212162	03	RL3W
EUT3	016211000012489	03	RL3W
EUT4	016211000013172	03	RL3W
EUT5	016211000210745	03	RL3W
EUT6	016211000210620	03	RL3W

\*EUT ID: is used to identify the test sample in the lab internally.

**Note:** It is performed to test SAR with the EUT1-4 and conducted power with the EUT5-6.

#### 4.3 Internal Identification of AE used during the test

AE ID*	Description	Model	SN	Manufacturer
AE1	Battery	TLi017D1	/	BYD

\*AE ID: is used to identify the test sample in the lab internally.

## 5 TEST METHODOLOGY

### 5.1 Applicable Limit Regulations

**ANSI C95.1–1992:** IEEE Standard for Safety Levels with Respect to Human Exposure to Radio Frequency Electromagnetic Fields, 3 kHz to 300 GHz.

It specifies the maximum exposure limit of **1.6 W/kg** as averaged over any 1 gram of tissue for portable devices being used within 20 cm of the user in the uncontrolled environment.

### 5.2 Applicable Measurement Standards

**IEEE 1528–2013:** Recommended Practice for Determining the Peak Spatial-Average Specific Absorption Rate (SAR) in the Human Head from Wireless Communications Devices: Measurement Techniques.

**KDB447498 D01: General RF Exposure Guidance v06:** Mobile and Portable Devices RF Exposure Procedures and Equipment Authorization Policies.

**KDB941225 D01 SAR test for 3G devices v03r01:** SAR Measurement Procedures for 3G Devices

**KDB941225 D05 SAR for LTE Devices v02r05:** SAR Evaluation Considerations for LTE Devices

**KDB248227 D01 802.11 Wi-Fi SAR v02r02:** SAR GUIDANCE FOR IEEE 802.11 (Wi-Fi) TRANSMITTERS

**KDB865664 D01 SAR measurement 100 MHz to 6 GHz v01r04:** SAR Measurement Requirements for 100 MHz to 6 GHz.

**KDB865664 D02 RF Exposure Reporting v01r02:** RF Exposure Compliance Reporting and Documentation Considerations

## 6 Specific Absorption Rate (SAR)

### 6.1 Introduction

SAR is related to the rate at which energy is absorbed per unit mass in an object exposed to a radio field. The SAR distribution in a biological body is complicated and is usually carried out by experimental techniques or numerical modeling. The standard recommends limits for two tiers of groups, occupational/controlled and general population/uncontrolled, based on a person's awareness and ability to exercise control over his or her exposure. In general, occupational/controlled exposure limits are higher than the limits for general population/uncontrolled.

### 6.2 SAR Definition

The SAR definition is the time derivative (rate) of the incremental energy ( $dW$ ) absorbed by (dissipated in) an incremental mass ( $dm$ ) contained in a volume element ( $dv$ ) of a given density ( $\rho$ ). The equation description is as below:

$$SAR = \frac{d}{dt} \left( \frac{dW}{dm} \right) = \frac{d}{dt} \left( \frac{dW}{\rho dv} \right)$$

SAR is expressed in units of Watts per kilogram (W/kg)

SAR measurement can be either related to the temperature elevation in tissue by

$$SAR = c \left( \frac{\delta T}{\delta t} \right)$$

Where:  $C$  is the specific heat capacity,  $\delta T$  is the temperature rise and  $\delta t$  is the exposure duration, or related to the electrical field in the tissue by

$$SAR = \frac{\sigma |E|^2}{\rho}$$

Where:  $\sigma$  is the conductivity of the tissue,  $\rho$  is the mass density of tissue and  $E$  is the RMS electrical field strength.

However for evaluating SAR of low power transmitter, electrical field measurement is typically applied.

## 7 Tissue Simulating Liquids

### 7.1 Targets for tissue simulating liquid

**Table 7.1: Targets for tissue simulating liquid**

Frequency(MHz)	Liquid Type	Conductivity( $\sigma$ )	$\pm 10\%$ Range	Permittivity( $\epsilon$ )	$\pm 10\%$ Range
750	Head	0.89	0.80~0.98	41.94	37.75~46.13
835	Head	0.90	0.81~0.99	41.5	37.35~45.65
1750	Head	1.40	1.26~1.54	40.0	36~44
1900	Head	1.40	1.26~1.54	40.0	36~44
2450	Head	1.80	1.62~1.98	39.2	35.28~43.12
2600	Head	1.96	1.76~2.16	39.01	35.11~42.91

**Table 7.2: Targets for tissue simulating liquid**

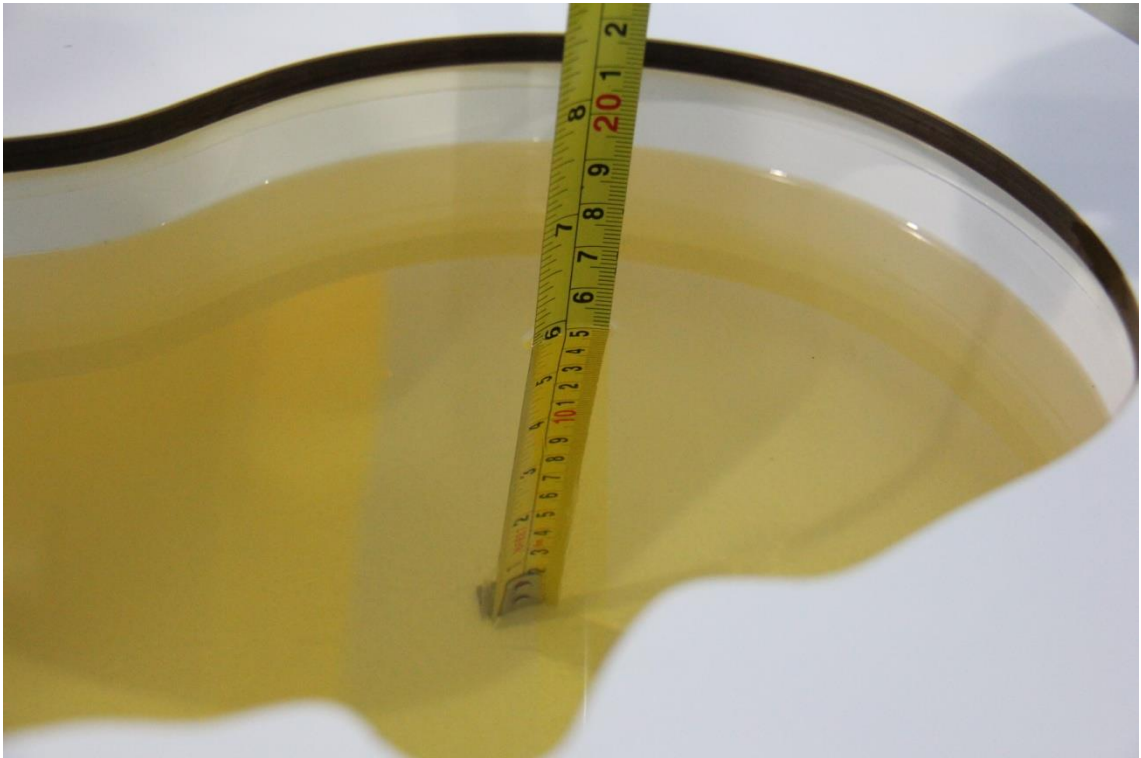
Frequency(MHz)	Liquid Type	Conductivity( $\sigma$ )	$\pm 5\%$ Range	Permittivity( $\epsilon$ )	$\pm 5\%$ Range
3700	Head	3.12	2.96~3.28	37.70	35.82~39.59
3900	Head	3.32	3.15~3.49	37.47	35.6~39.34
5250	Head	4.71	4.47~4.95	35.93	34.13~37.73
5600	Head	5.07	4.82~5.32	35.53	33.8~37.3
5750	Head	5.22	4.96~5.48	35.36	33.59~37.13

### 7.2 Dielectric Performance

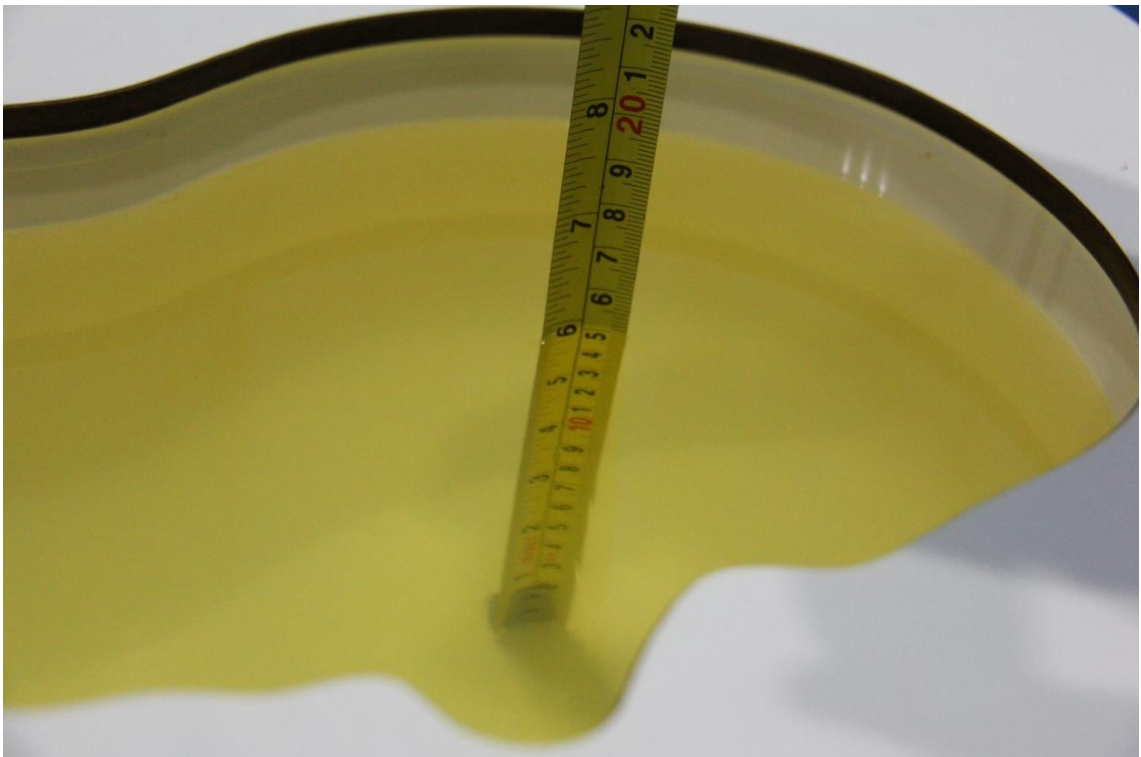
**Table 7.3: Dielectric Performance of Tissue Simulating Liquid**

Measurement Date (yyyy-mm-dd)	Type	Frequency	Permittivity $\epsilon$	Drift (%)	Conductivity $\sigma$ (S/m)	Drift (%)
2022-4-15	Head	750 MHz	44.37	5.79%	0.9317	4.69%
2022-4-16	Head	835 MHz	44.13	6.34%	0.9579	-1.25%
2022-4-18	Head	1750 MHz	42.33	5.61%	1.409	2.85%
2022-4-19	Head	1900 MHz	42.04	5.10%	1.496	6.86%
2022-4-21	Head	2450 MHz	41.2	5.10%	1.894	5.22%
2022-4-26	Head	5250 MHz	36.46	1.48%	4.672	-0.81%
2022-4-27	Head	5600 MHz	35.84	0.87%	5.043	-0.53%
2022-4-28	Head	5750 MHz	35.55	0.54%	5.231	0.21%

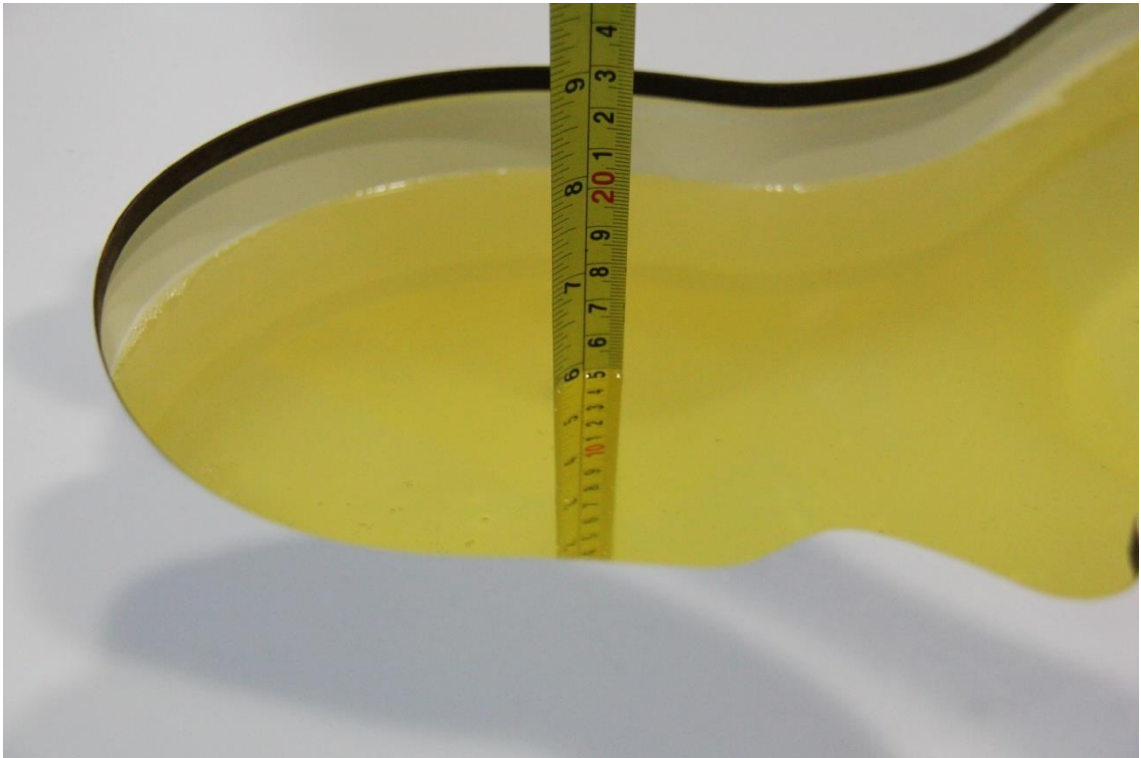
Note: The liquid temperature is 22.0°C



Picture 7-1 Liquid depth in the Head Phantom (835 MHz)



Picture 7-2 Liquid depth in the Head Phantom (1900 MHz)

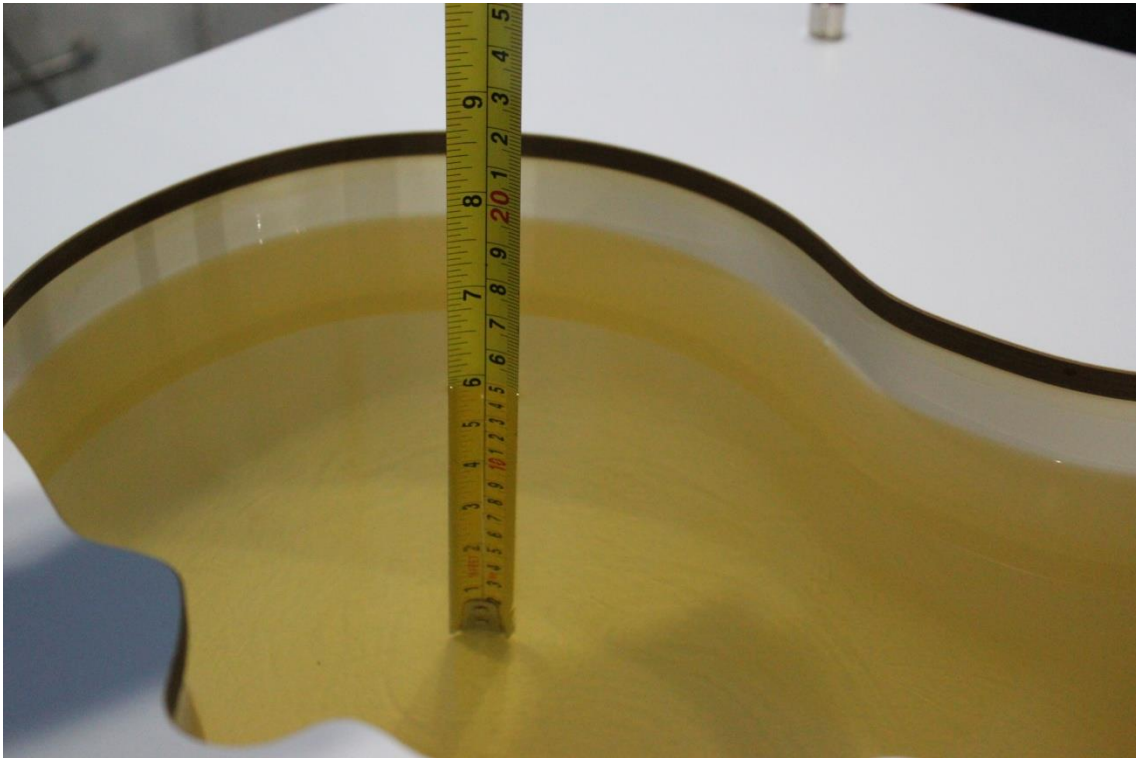


Picture 7-3 Liquid depth in the Head Phantom (2450MHz)



Picture 7-4 Liquid depth in the Head Phantom (5GHz)





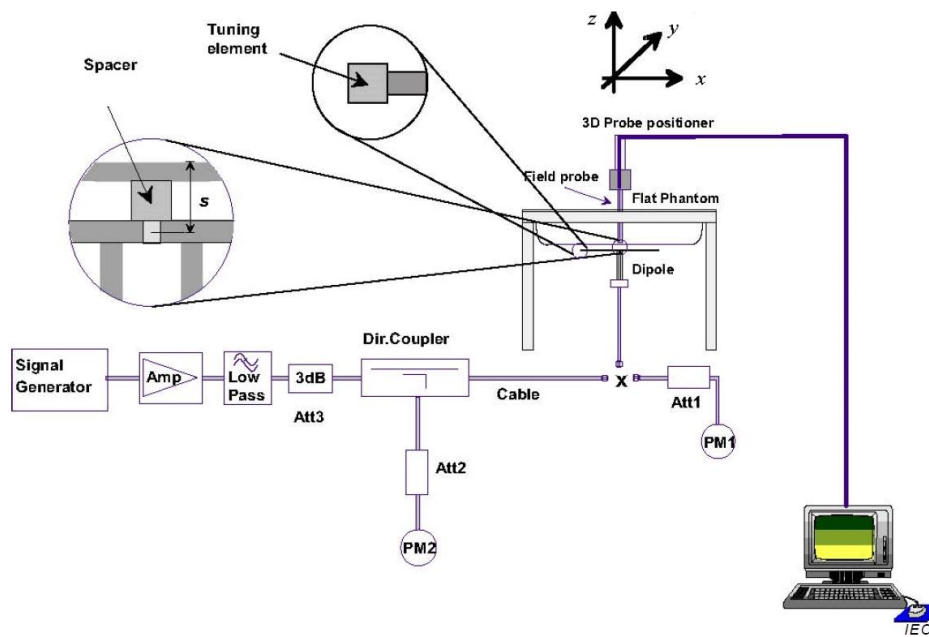
Picture 7-5 Liquid depth in the Head Phantom (750 MHz)



## 8 System verification

### 8.1 System Setup

In the simplified setup for system evaluation, the DUT is replaced by a calibrated dipole and the power source is replaced by a continuous wave that comes from a signal generator. The calibrated dipole must be placed beneath the flat phantom section of the SAM twin phantom with the correct distance holder. The distance holder should touch the phantom surface with a light pressure at the reference marking and be oriented parallel to the long side of the phantom. The equipment setup is shown below:



Picture 8.1 System Setup for System Evaluation



Picture 8.2 Photo of Dipole Setup

## 8.2 System Verification

SAR system verification is required to confirm measurement accuracy, according to the tissue dielectric media, probe calibration points and other system operating parameters required for measuring the SAR of a test device. The system verification must be performed for each frequency band and within the valid range of each probe calibration point required for testing the device.

The system verification results are required that the area scan estimated 1-g SAR is within 3% of the zoom scan 1-g SAR. The details are presented in annex B.

**Table 8.1: System Verification of Head**

Measurement Date (yyyy-mm-dd)	Frequency	Target value (W/kg)		Measured value(W/kg)		Deviation	
		10 g Average	1 g Average	10 g Average	1 g Average	10 g Average	1 g Average
2022-4-15	750MHz	5.65	8.68	5.52	8.48	-2.30%	-2.30%
2022-4-16	835 MHz	6.24	9.63	6.08	9.40	-2.56%	-2.39%
2022-4-18	1750MHz	19.40	36.90	19.80	37.92	2.06%	2.76%
2022-4-19	1900 MHz	20.90	40.10	20.80	39.40	-0.48%	-1.75%
2022-4-21	2450 MHz	24.9	53.3	25.1	53.8	0.72%	0.94%
2022-4-26	5250 MHz	22.7	79.5	22.1	77.3	-2.64%	-2.77%
2022-4-27	5600 MHz	23.7	83.8	23.1	80.9	-2.53%	-3.46%
2022-4-28	5750 MHz	22.7	81.0	22.3	79.5	-1.76%	-1.85%

## 9 Measurement Procedures

### 9.1 Tests to be performed

In order to determine the highest value of the peak spatial-average SAR of a handset, all device positions, configurations and operational modes shall be tested for each frequency band according to steps 1 to 3 below. A flowchart of the test process is shown in picture 9.1.

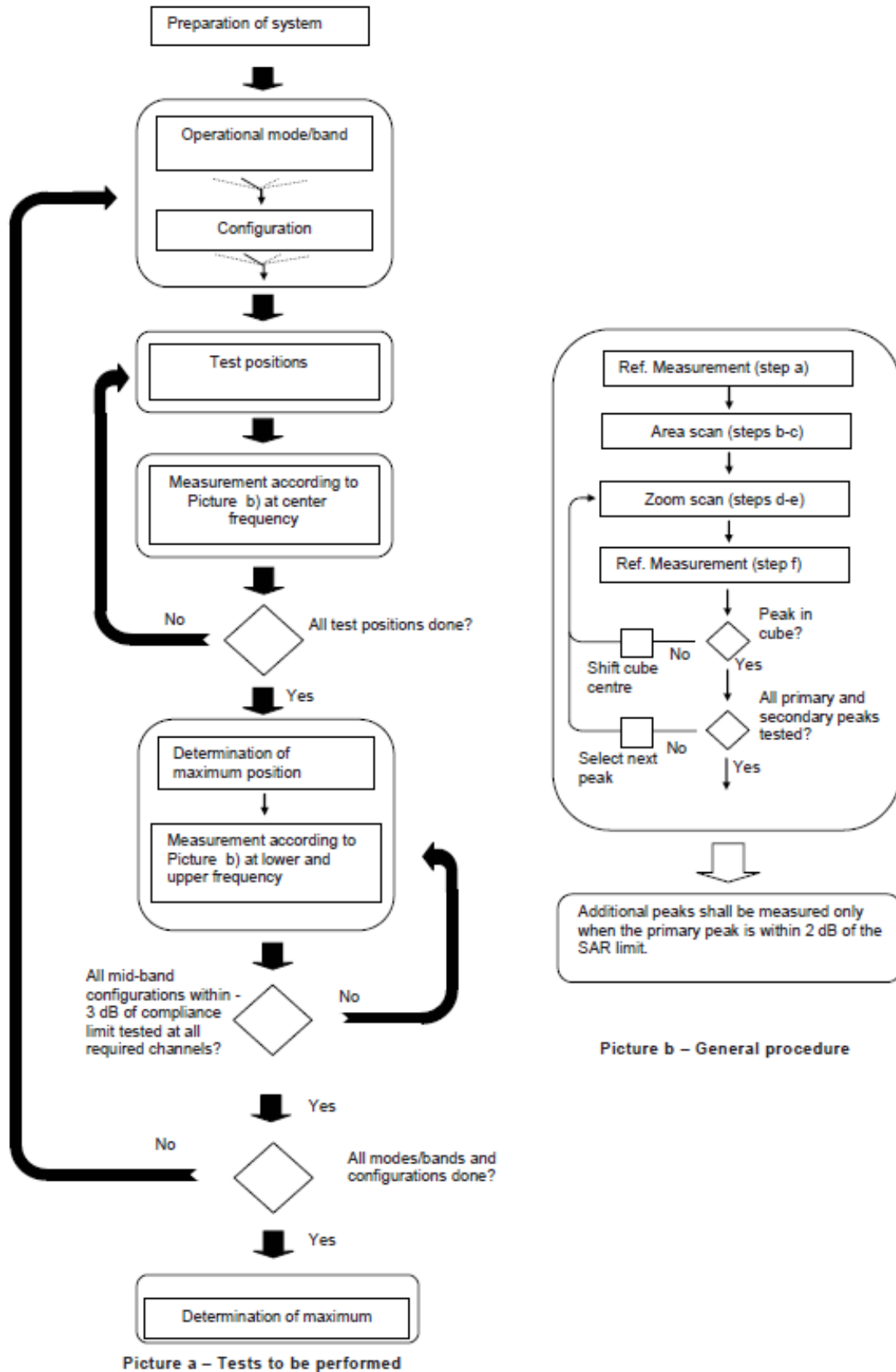
**Step 1:** The tests described in 9.2 shall be performed at the channel that is closest to the centre of the transmit frequency band ( $f_c$ ) for:

- a) all device positions (cheek and tilt, for both left and right sides of the SAM phantom, as described in annex D),
- b) all configurations for each device position in a), e.g., antenna extended and retracted, and
- c) all operational modes, e.g., analogue and digital, for each device position in a) and configuration in b) in each frequency band.

If more than three frequencies need to be tested according to 11.1 (i.e.,  $N_c > 3$ ), then all frequencies, configurations and modes shall be tested for all of the above test conditions.

**Step 2:** For the condition providing highest peak spatial-average SAR determined in Step 1, perform all tests described in 9.2 at all other test frequencies, i.e., lowest and highest frequencies. In addition, for all other conditions (device position, configuration and operational mode) where the peak spatial-average SAR value determined in Step 1 is within 3 dB of the applicable SAR limit, it is recommended that all other test frequencies shall be tested as well.

**Step 3:** Examine all data to determine the highest value of the peak spatial-average SAR found in Steps 1 to 2.



Picture 9.1 Block diagram of the tests to be performed

## 9.2 General Measurement Procedure

The area and zoom scan resolutions specified in the table below must be applied to the SAR measurements and fully documented in SAR reports to qualify for TCB approval. Probe boundary effect error compensation is required for measurements with the probe tip closer than half a probe tip diameter to the phantom surface. Both the probe tip diameter and sensor offset distance must satisfy measurement protocols; to ensure probe boundary effect errors are minimized and the higher fields closest to the phantom surface can be correctly measured and extrapolated to the phantom surface for computing 1-g SAR. Tolerances of the post-processing algorithms must be verified by the test laboratory for the scan resolutions used in the SAR measurements, according to the reference distribution functions specified in IEEE Std 1528-2013. The results should be documented as part of the system validation records and may be requested to support test results when all the measurement parameters in the following table are not satisfied.

		$\leq 3$ GHz	$> 3$ GHz	
Maximum distance from closest measurement point (geometric center of probe sensors) to phantom surface		$5 \pm 1$ mm	$\frac{1}{2} \cdot \delta \cdot \ln(2) \pm 0.5$ mm	
Maximum probe angle from probe axis to phantom surface normal at the measurement location		$30^\circ \pm 1^\circ$	$20^\circ \pm 1^\circ$	
Maximum area scan spatial resolution: $\Delta x_{Area}$ , $\Delta y_{Area}$		$\leq 2$ GHz: $\leq 15$ mm 2 – 3 GHz: $\leq 12$ mm	3 – 4 GHz: $\leq 12$ mm 4 – 6 GHz: $\leq 10$ mm	
		When the x or y dimension of the test device, in the measurement plane orientation, is smaller than the above, the measurement resolution must be $\leq$ the corresponding x or y dimension of the test device with at least one measurement point on the test device.		
Maximum zoom scan spatial resolution: $\Delta x_{Zoom}$ , $\Delta y_{Zoom}$		$\leq 2$ GHz: $\leq 8$ mm 2 – 3 GHz: $\leq 5$ mm*	3 – 4 GHz: $\leq 5$ mm* 4 – 6 GHz: $\leq 4$ mm*	
Maximum zoom scan spatial resolution, normal to phantom surface	uniform grid: $\Delta z_{Zoom}(n)$	$\leq 5$ mm	3 – 4 GHz: $\leq 4$ mm 4 – 5 GHz: $\leq 3$ mm 5 – 6 GHz: $\leq 2$ mm	
	graded grid	$\Delta z_{Zoom}(1)$ : between 1 <sup>st</sup> two points closest to phantom surface	$\leq 4$ mm	3 – 4 GHz: $\leq 3$ mm 4 – 5 GHz: $\leq 2.5$ mm 5 – 6 GHz: $\leq 2$ mm
		$\Delta z_{Zoom}(n>1)$ : between subsequent points	$\leq 1.5 \cdot \Delta z_{Zoom}(n-1)$	
Minimum zoom scan volume	x, y, z	$\geq 30$ mm	3 – 4 GHz: $\geq 28$ mm 4 – 5 GHz: $\geq 25$ mm 5 – 6 GHz: $\geq 22$ mm	
Note: $\delta$ is the penetration depth of a plane-wave at normal incidence to the tissue medium; see draft standard IEEE P1528-2011 for details. * When zoom scan is required and the <i>reported</i> SAR from the area scan based 1-g SAR estimation procedures of KDB 447498 is $\leq 1.4$ W/kg, $\leq 8$ mm, $\leq 7$ mm and $\leq 5$ mm zoom scan resolution may be applied, respectively, for 2 GHz to 3 GHz, 3 GHz to 4 GHz and 4 GHz to 6 GHz.				

### 9.3 WCDMA Measurement Procedures for SAR

The following procedures are applicable to WCDMA handsets operating under 3GPP Release99, Release 5 and Release 6. The default test configuration is to measure SAR with an established radio link between the DUT and a communication test set using a 12.2kbps RMC (reference measurement channel) configured in Test Loop Mode 1. SAR is selectively confirmed for other physical channel configurations (DPCCH & DPDCH<sub>n</sub>), HSDPA and HSPA (HSUPA/HSDPA) modes according to output power, exposure conditions and device operating capabilities. Both uplink and downlink should be configured with the same RMC or AMR, when required. SAR for Release 5 HSDPA and Release 6 HSPA are measured using the applicable FRC (fixed reference channel) and E-DCH reference channel configurations. Maximum output power is verified according to applicable versions of 3GPP TS 34.121 and SAR must be measured according to these maximum output conditions. When Maximum Power Reduction (MPR) is not implemented according to Cubic Metric (CM) requirements for Release 6 HSPA, the following procedures do not apply.

#### For Release 5 HSDPA Data Devices:

Sub-test	$\beta_c$	$\beta_d$	$\beta_d$ (SF)	$\beta_c / \beta_d$	$\beta_{hs}$	CM/dB
1	2/15	15/15	64	2/15	4/15	0.0
2	12/15	15/15	64	12/15	24/25	1.0
3	15/15	8/15	64	15/8	30/15	1.5
4	15/15	4/15	64	15/4	30/15	1.5

#### For Release 6 HSPA Data Devices

Sub-test	$\beta_c$	$\beta_d$	$\beta_d$ (SF)	$\beta_c / \beta_d$	$\beta_{hs}$	$\beta_{ec}$	$\beta_{ed}$	$\beta_{ed}$ (SF)	$\beta_{ed}$ (codes)	CM (dB)	MPR (dB)	AG Index	E-TFCI
1	11/15	15/15	64	11/15	22/15	209/225	1039/225	4	1	1.5	1.5	20	75
2	6/15	15/15	64	6/15	12/15	12/15	12/15	4	1	1.5	1.5	12	67
3	15/15	9/15	64	15/9	30/15	30/15	$\beta_{ed1}:47/15$ $\beta_{ed2}:47/15$	4	2	1.5	1.5	15	92
4	2/15	15/15	64	2/15	4/15	4/15	56/75	4	1	1.5	1.5	17	71
5	15/15	15/15	64	15/15	24/15	30/15	134/15	4	1	1.5	1.5	21	81

#### Rel.8 DC-HSDPA (Cat 24)

SAR test exclusion for Rel.8 DC-HSDPA must satisfy the SAR test exclusion requirements of Rel.5 HSDPA. SAR test exclusion for DC-HSDPA devices is determined by power measurements according to the H-Set 12, Fixed Reference Channel (FRC) configuration in Table C.8.1.12 of 3GPP TS 34.121-1. A primary and a secondary serving HS-DSCH Cell are required to perform the power measurement and for the results to qualify for SAR test exclusion.

## 9.4 SAR Measurement for LTE

SAR tests for LTE are performed with a base station simulator, Rohde & Schwarz CMW500. Closed loop power control was used so the UE transmits with maximum output power during SAR testing. All powers were measured with the CMW 500.

It is performed for conducted power and SAR based on the KDB941225 D05.

SAR is evaluated separately according to the following procedures for the different test positions in each exposure condition – head, body, body-worn accessories and other use conditions. The procedures in the following subsections are applied separately to test each LTE frequency band.

### 1) QPSK with 1 RB allocation

Start with the largest channel bandwidth and measure SAR for QPSK with 1 RB allocation, using the RB offset and required test channel combination with the highest maximum output power among RB offsets at the upper edge, middle and lower edge of each required test channel. When the reported SAR is  $\leq 0.8$  W/kg, testing of the remaining RB offset configurations and required test channels is not required for 1 RB allocation; otherwise, SAR is required for the remaining required test channels and only for the RB offset configuration with the highest output power for that channel. When the reported SAR of a required test channel is  $> 1.45$  W/kg, SAR is required for all three RB offset configurations for that required test channel.

### 2) QPSK with 50% RB allocation

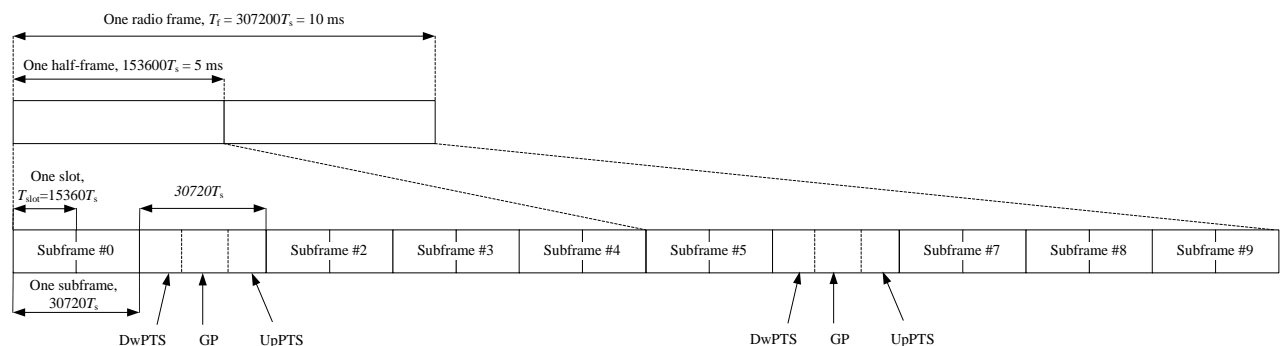
The procedures required for 1 RB allocation in 1) are applied to measure the SAR for QPSK with 50% RB allocation.

### 3) QPSK with 100% RB allocation

For QPSK with 100% RB allocation, SAR is not required when the highest maximum output power for 100 % RB allocation is less than the highest maximum output power in 50% and 1 RB allocations and the highest reported SAR for 1 RB and 50% RB allocation in 1) and 2) are  $\leq 0.8$  W/kg. Otherwise, SAR is measured for the highest output power channel; and if the reported SAR is  $> 1.45$  W/kg, the remaining required test channels must also be tested.

## TDD test:

TDD testing is performed using guidance from FCC KDB 941225 D05 and the SAR test guidance provided in April 2013 TCB works hop notes. TDD is tested at the highest duty factor using UL-DL configuration 0 with special subframe configuration 6 and applying the FDD LTE procedures in KDB 941225 D05. SAR testing is performed using the extended cyclic prefix listed in 3GPP TS 36.211.



**Figure 9.2: Frame structure type 2 (for 5 ms switch-point periodicity)**

**Table 9.1: Configuration of special subframe (lengths of DwPTS/GP/UpPTS)**

Special subframe configuration	Normal cyclic prefix in downlink			Extended cyclic prefix in downlink		
	DwPTS	UpPTS		DwPTS	UpPTS	
		Normal cyclic prefix in uplink	Extended cyclic prefix in uplink		Normal cyclic prefix in uplink	Extended cyclic prefix in uplink
0	$6592 \cdot T_s$	$2192 \cdot T_s$	$2560 \cdot T_s$	$7680 \cdot T_s$	$2192 \cdot T_s$	$2560 \cdot T_s$
1	$19760 \cdot T_s$			$20480 \cdot T_s$		
2	$21952 \cdot T_s$			$23040 \cdot T_s$		
3	$24144 \cdot T_s$			$25600 \cdot T_s$		
4	$26336 \cdot T_s$	$4384 \cdot T_s$	$5120 \cdot T_s$	$7680 \cdot T_s$	$4384 \cdot T_s$	$5120 \cdot T_s$
5	$6592 \cdot T_s$			$20480 \cdot T_s$		
6	$19760 \cdot T_s$			$23040 \cdot T_s$		
7	$21952 \cdot T_s$			$12800 \cdot T_s$		
8	$24144 \cdot T_s$			-	-	-
9	$13168 \cdot T_s$			-	-	-

**Table 9.2: Uplink-downlink configurations**

Uplink-downlink configuration	Downlink-to-Uplink Switch-point periodicity	Subframe number									
		0	1	2	3	4	5	6	7	8	9
0	5 ms	D	S	U	U	U	D	S	U	U	U
1	5 ms	D	S	U	U	D	D	S	U	U	D
2	5 ms	D	S	U	D	D	D	S	U	D	D
3	10 ms	D	S	U	U	U	D	D	D	D	D
4	10 ms	D	S	U	U	D	D	D	D	D	D
5	10 ms	D	S	U	D	D	D	D	D	D	D
6	5 ms	D	S	U	U	U	D	S	U	U	D

Duty factor is calculated by:

Duty factor =  $\frac{\text{uplink frame} \cdot 6 + \text{UpPTS} \cdot 2}{\text{one frame length}}$

$$= \frac{(30720 \cdot T_s \cdot 6 + 5120 \cdot T_s \cdot 2)}{307200 \cdot T_s}$$

$$= 0.633$$



## 9.5 Bluetooth & Wi-Fi Measurement Procedures for SAR

Normal network operating configurations are not suitable for measuring the SAR of 802.11 transmitters in general. Unpredictable fluctuations in network traffic and antenna diversity conditions can introduce undesirable variations in SAR results. The SAR for these devices should be measured using chipset based test mode software to ensure that the results are consistent and reliable.

Chipset based test mode software is hardware dependent and generally varies among manufacturers. The device operating parameters established in a test mode for SAR measurements must be identical to those programmed in production units, including output power levels, amplifier gain settings and other RF performance tuning parameters. The test frequencies should correspond to actual channel frequencies defined for domestic use. SAR for devices with switched diversity should be measured with only one antenna transmitting at a time during each SAR measurement, according to a fixed modulation and data rate. The same data pattern should be used for all measurements.

## 9.6 Power Drift

To control the output power stability during the SAR test, DASY5 system calculates the power drift by measuring the E-field at the same location at the beginning and at the end of the measurement for each test position. These drift values can be found in section 14 labeled as: (Power Drift [dB]). This ensures that the power drift during one measurement is within 5%.

## 10 Area Scan Based 1-g SAR

### 10.1 Requirement of KDB

According to the KDB447498 D01, when the implementation is based the specific polynomial fit algorithm as presented at the 29th Bioelectromagnetics Society meeting (2007) and the estimated 1-gSAR is  $\leq 1.2$  W/kg, a zoom scan measurement is not required provided it is also not needed for any other purpose; for example, if the peak SAR location required for simultaneous transmission SAR test exclusion can be determined accurately by the SAR system or manually to discriminate between distinctive peaks and scattered noisy SAR distributions from area scans.

There must not be any warning or alert messages due to various measurement concerns identified by the SAR system; for example, noise in measurements, peaks too close to scan boundary, peaks are too sharp, spatial resolution and uncertainty issues etc. The SAR system verification must also demonstrate that the area scan estimated 1-g SAR is within 3% of the zoom scan 1-g SAR (See Annex B). When all the SAR results for each exposure condition in a frequency band and wireless mode are based on estimated 1-g SAR, the 1-g SAR for the highest SAR configuration must be determined by a zoom scan.

### 10.2 Fast SAR Algorithms

The approach is based on the area scan measurement applying a frequency dependent attenuation parameter. This attenuation parameter was empirically determined by analyzing a large number of phones. The MOTOROLA FAST SAR was developed and validated by the MOTOROLA Research Group in Ft. Lauderdale.

In the initial study, an approximation algorithm based on Linear fit was developed. The accuracy of the algorithm has been demonstrated across a broad frequency range (136-2450 MHz) and for both 1- and 10-g averaged SAR using a sample of 264 SAR measurements from 55 wireless handsets. For the sample size studied, the root-mean-squared errors of the algorithm are 1.2% and 5.8% for 1- and 10-g averaged SAR, respectively. The paper describing the algorithm in detail is expected to be published in August 2004 within the Special Issue of Transactions on MTT.

In the second step, the same research group optimized the fitting algorithm to an Polynomial fit whereby the frequency validity was extended to cover the range 30-6000MHz. Details of this study can be found in the BEMS 2007 Proceedings.

Both algorithms are implemented in DASY software.

## 11 Conducted Output Power

### 11.1 GSM Measurement result

**Table 11.1-1: The conducted power measurement results-GSM850**

GSM 850 Speech (GMSK)	Measured timeslot-averaged output power (dBm)			Tune up	calculation	Source-based time-averaged output power (dBm)		
	251	190	128			251	190	128
1 Txslot	32.00	32.13	31.99	33.00	/	/	/	/
GSM 850 GPRS (GMSK)	Measured timeslot-averaged output power (dBm)				calculation	Source-based time-averaged output power (dBm)		
	251	190	128			251	190	128
1 Txslot	31.96	32.09	31.95	33.00	-9.03	22.93	23.06	22.92
2 Txslots	31.34	31.48	31.35	32.00	-6.02	25.32	25.46	25.33
3 Txslots	29.67	29.68	29.66	30.00	-4.26	25.41	25.42	25.40
<b>4 Txslots</b>	28.46	28.49	28.47	29.00	-3.01	25.45	25.48	25.46
GSM 850 EGPRS (GMSK)	Measured timeslot-averaged output power (dBm)				calculation	Source-based time-averaged output power (dBm)		
	251	190	128			251	190	128
1 Txslot	31.97	32.06	31.92	33.00	-9.03	22.94	23.03	22.89
2 Txslots	31.32	31.44	31.29	32.00	-6.02	25.30	25.42	25.27
3 Txslots	29.61	29.70	29.66	30.00	-4.26	25.35	25.44	25.40
<b>4 Txslots</b>	28.38	28.48	28.44	29.00	-3.01	25.37	25.47	25.43
GSM 850 EGPRS (8PSK)	Measured timeslot-averaged output power (dBm)				calculation	Source-based time-averaged output power (dBm)		
	251	190	128			251	190	128
1 Txslot	25.74	26.10	26.13	27.00	-9.03	16.71	17.07	17.10
2 Txslots	24.57	24.86	24.97	25.50	-6.02	18.55	18.84	18.95
3Txslots	22.67	22.91	22.97	23.50	-4.26	18.41	18.65	18.71
4 Txslots	21.60	21.98	21.99	22.50	-3.01	18.59	18.97	18.98

NOTES:

1) Division Factors

To average the power, the division factor is as follows:

1TX-slot = 1 transmit time slot out of 8 time slots=> conducted power divided by (8/1) => -9.03dB

2TX-slots = 2 transmit time slots out of 8 time slots=> conducted power divided by (8/2) => -6.02dB

3TX-slots = 3 transmit time slots out of 8 time slots=> conducted power divided by (8/3) => -4.26dB

4TX-slots = 4 transmit time slots out of 8 time slots=> conducted power divided by (8/4) => -3.01dB

**According to the conducted power as above, the body measurements are performed with 4Txslots for GSM850.**

**Table 11.1-2: The conducted power measurement results-GSM1900**

PCS1900 Speech (GMSK)	Measured timeslot-averaged output power (dBm)			Tune up	calculation	Source-based time-averaged output power (dBm)		
	810	661	512			810	661	512
1 Txslot	29.26	29.19	29.02	29.50	/	/	/	/
PCS1900 GPRS (GMSK)	Measured timeslot-averaged output power (dBm)				calculation	Source-based time-averaged output power (dBm)		
	810	661	512			810	661	512
1 Txslot	29.24	29.18	29.00	29.50	-9.03	20.21	20.15	19.97
2 Txslots	28.46	28.36	28.20	29.00	-6.02	22.44	22.34	22.18
3 Txslots	26.66	26.51	26.31	27.00	-4.26	22.40	22.25	22.05
<b>4 Txslots</b>	25.56	25.38	25.15	26.00	-3.01	22.55	22.37	22.14
PCS1900 EGPRS (GMSK)	Measured timeslot-averaged output power (dBm)				calculation	Source-based time-averaged output power (dBm)		
	810	661	512			810	661	512
1 Txslot	29.18	29.12	28.96	29.50	-9.03	20.15	20.09	19.93
2 Txslots	28.40	28.31	28.16	28.50	-6.02	22.38	22.29	22.14
3Txslots	26.60	26.46	26.27	27.00	-4.26	22.34	22.20	22.01
<b>4 Txslots</b>	25.50	25.33	25.18	26.00	-3.01	22.49	22.32	22.17
PCS1900 EGPRS (8PSK)	Measured timeslot-averaged output power (dBm)				calculation	Source-based time-averaged output power (dBm)		
	810	661	512			810	661	512
1 Txslot	26.39	26.21	26.08	26.50	-9.03	17.36	17.18	17.05
2 Txslots	25.55	25.24	25.27	26.00	-6.02	19.53	19.22	19.25
3Txslots	23.41	23.19	23.05	23.50	-4.26	19.15	18.93	18.79
4 Txslots	22.37	22.19	22.05	22.50	-3.01	19.36	19.18	19.04

## NOTES:

## 1) Division Factors

To average the power, the division factor is as follows:

1TX-slot = 1 transmit time slot out of 8 time slots=&gt; conducted power divided by (8/1) =&gt; -9.03dB

2TX-slots = 2 transmit time slots out of 8 time slots=&gt; conducted power divided by (8/2) =&gt; -6.02dB

3TX-slots = 3 transmit time slots out of 8 time slots=&gt; conducted power divided by (8/3) =&gt; -4.26dB

4TX-slots = 4 transmit time slots out of 8 time slots=&gt; conducted power divided by (8/4) =&gt; -3.01dB

**According to the conducted power as above, the body measurements are performed with 4Txslots for GSM1900.**

## 11.2 WCDMA Measurement result

**Table 11.2-1: The conducted Power for WCDMA Band5**

WCDMA850	Sub test	FDDV result (dBm)			Tune up
		4233/4458	4183/4408	4132/4357	
		(846.6MHz)	(836.6MHz)	(826.4MHz)	
	/	23.53	23.65	23.51	24.00
HSUPA	1	20.52	20.59	20.54	22.50
	2	20.51	20.63	20.53	22.50
	3	21.49	21.60	21.52	22.50
	4	20.53	20.51	20.53	22.50
	5	21.44	21.53	21.47	22.50
HSPA+	/	21.33	21.44	21.29	22.50
DC-HSDPA	1	21.85	21.93	21.86	23.00
	2	21.71	21.78	21.65	23.00
	3	21.29	21.39	21.26	22.50
	4	21.24	21.34	21.23	22.50

**Table 11.2-2: The conducted Power for WCDMA Band2**

WCDMA1900	Sub test	FDDII result (dBm)			Tune up
		9538/9938	9400/9800	9262/9662	
		(1907.6MHz)	(1880MHz)	(1852.4MHz)	
	/	23.96	23.93	23.98	24.00
HSUPA	1	20.94	20.93	21.07	22.50
	2	20.99	20.96	21.06	21.50
	3	21.99	21.96	21.95	22.00
	4	20.48	20.47	20.54	21.00
	5	21.92	21.90	22.00	22.50
HSPA+	/	21.55	21.51	21.44	22.50
DC-HSDPA	1	21.91	21.88	21.90	23.00
	2	21.83	21.80	21.92	23.00
	3	21.42	21.43	21.41	23.00
	4	21.38	21.37	21.39	23.00



### 11.3 LTE Measurement result

#### Maximum Target Power for Production Unit

Band	Tune up (dBm)
LTE B2	24
LTE B5	24
LTE B12	24
LTE B13	24
LTE B66	24

LTE B2					
BANDWIDTH	Number of RBs	Frequency	QPSK	16QAM	
1.4MHz	1RB-High (5)	1909.3 (19193)	22.79	22.00	
		1880 (18900)	22.66	21.89	
		1850.7 (18607)	22.74	21.97	
	1RB-Middle (3)	1909.3 (19193)	22.91	22.17	
		1880 (18900)	22.81	22.02	
		1850.7 (18607)	22.84	22.21	
	1RB-Low (0)	1909.3 (19193)	22.75	22.06	
		1880 (18900)	22.64	22.01	
		1850.7 (18607)	22.73	22.07	
	3RB-High (3)	1909.3 (19193)	22.89	21.96	
		1880 (18900)	22.73	21.83	
		1850.7 (18607)	22.82	21.85	
	3RB-Middle (1)	1909.3 (19193)	22.92	21.97	
		1880 (18900)	22.79	21.83	
		1850.7 (18607)	22.87	21.94	
	3RB-Low (0)	1909.3 (19193)	22.88	21.93	
		1880 (18900)	22.73	21.76	
		1850.7 (18607)	22.83	21.89	
	6RB (0)	1909.3 (19193)	21.94	21.01	
		1880 (18900)	21.79	20.86	
		1850.7 (18607)	21.87	20.97	
	3MHz	1RB-High (14)	1908.5 (19185)	22.82	22.19
			1880 (18900)	22.68	22.05
			1851.5 (18615)	22.76	22.14
1RB-Middle (7)		1908.5 (19185)	22.96	22.19	
		1880 (18900)	22.81	22.19	
		1851.5 (18615)	22.88	22.27	
1RB-Low (0)		1908.5 (19185)	22.77	22.07	
		1880 (18900)	22.71	21.99	
		1851.5 (18615)	22.78	22.15	
8RB-High (7)		1908.5 (19185)	21.90	20.91	
		1880 (18900)	21.75	20.78	
		1851.5 (18615)	21.85	20.86	
8RB-Middle (4)		1908.5 (19185)	21.92	20.94	
		1880 (18900)	21.77	20.78	
		1851.5 (18615)	21.87	20.91	
8RB-Low (0)		1908.5 (19185)	21.86	20.89	
		1880 (18900)	21.75	20.77	
		1851.5 (18615)	21.85	20.86	
15RB (0)		1908.5 (19185)	21.85	20.83	
		1880 (18900)	21.75	20.72	
		1851.5 (18615)	21.84	20.81	

5MHz	1RB-High (24)	1907.5 (19175)	22.77	22.08
		1880 (18900)	22.63	21.85
		1852.5 (18625)	22.67	22.06
	1RB-Middle (12)	1907.5 (19175)	22.93	22.26
		1880 (18900)	22.83	22.22
		1852.5 (18625)	22.99	22.20
	1RB-Low (0)	1907.5 (19175)	22.69	21.97
		1880 (18900)	22.66	21.87
		1852.5 (18625)	22.73	21.96
	12RB-High (13)	1907.5 (19175)	21.87	20.88
		1880 (18900)	21.75	20.78
		1852.5 (18625)	21.86	20.87
	12RB-Middle (6)	1907.5 (19175)	21.91	20.92
		1880 (18900)	21.80	20.81
		1852.5 (18625)	21.87	20.87
	12RB-Low (0)	1907.5 (19175)	21.86	20.86
		1880 (18900)	21.80	20.76
		1852.5 (18625)	21.84	20.82
25RB (0)	1907.5 (19175)	21.91	20.88	
	1880 (18900)	21.80	20.76	
	1852.5 (18625)	21.88	20.84	
10MHz	1RB-High (49)	1905 (19150)	22.81	22.05
		1880 (18900)	22.64	21.95
		1855 (18650)	22.68	22.07
	1RB-Middle (24)	1905 (19150)	22.89	22.12
		1880 (18900)	22.82	22.09
		1855 (18650)	22.90	22.23
	1RB-Low (0)	1905 (19150)	22.71	22.08
		1880 (18900)	22.70	22.07
		1855 (18650)	22.76	22.08
	25RB-High (25)	1905 (19150)	21.92	20.89
		1880 (18900)	21.83	20.80
		1855 (18650)	21.92	20.92
	25RB-Middle (12)	1905 (19150)	21.91	20.87
		1880 (18900)	21.82	20.78
		1855 (18650)	21.90	20.85
	25RB-Low (0)	1905 (19150)	21.93	20.91
		1880 (18900)	21.84	20.81
		1855 (18650)	21.91	20.87
50RB (0)	1905 (19150)	21.95	20.88	
	1880 (18900)	21.86	20.83	
	1855 (18650)	21.94	20.90	



15MHz	1RB-High (74)	1902.5 (19125)	22.76	22.09
		1880 (18900)	22.63	21.96
		1857.5 (18675)	22.66	22.03
	1RB-Middle (37)	1902.5 (19125)	22.80	22.09
		1880 (18900)	22.74	22.11
		1857.5 (18675)	22.76	22.06
	1RB-Low (0)	1902.5 (19125)	22.63	21.83
		1880 (18900)	22.67	21.90
		1857.5 (18675)	22.71	22.04
	36RB-High (38)	1902.5 (19125)	21.89	20.85
		1880 (18900)	21.82	20.77
		1857.5 (18675)	21.87	20.86
	36RB-Middle (19)	1902.5 (19125)	21.88	20.83
		1880 (18900)	21.81	20.78
		1857.5 (18675)	21.89	20.86
	36RB-Low (0)	1902.5 (19125)	21.88	20.83
		1880 (18900)	21.81	20.82
		1857.5 (18675)	21.86	20.82
	75RB (0)	1902.5 (19125)	21.87	20.83
		1880 (18900)	21.83	20.81
		1857.5 (18675)	21.90	20.86
20MHz	1RB-High (99)	1900 (19100)	22.51	21.82
		1880 (18900)	22.39	21.81
		1860 (18700)	22.43	21.74
	1RB-Middle (50)	1900 (19100)	22.84	22.07
		1880 (18900)	22.81	22.17
		1860 (18700)	22.83	22.09
	1RB-Low (0)	1900 (19100)	22.40	21.78
		1880 (18900)	22.48	21.74
		1860 (18700)	22.53	21.90
	50RB-High (50)	1900 (19100)	21.75	20.72
		1880 (18900)	21.82	20.77
		1860 (18700)	21.85	20.83
	50RB-Middle (25)	1900 (19100)	21.82	20.78
		1880 (18900)	21.81	20.76
		1860 (18700)	21.86	20.84
	50RB-Low (0)	1900 (19100)	21.87	20.85
		1880 (18900)	21.85	20.82
		1860 (18700)	21.80	20.78
	100RB (0)	1900 (19100)	21.81	20.75
		1880 (18900)	21.80	20.76
		1860 (18700)	21.80	20.76

LTE B5				
BANDWIDTH	Number of RBs	Frequency	QPSK	16QAM
1.4MHz	1RB-High (5)	848.3 (20643)	22.37	21.55
		836.5 (20525)	22.33	21.57
		824.7 (20407)	22.41	21.61
	1RB-Middle (3)	848.3 (20643)	22.53	21.78
		836.5 (20525)	22.42	21.76
		824.7 (20407)	22.53	21.72
	1RB-Low (0)	848.3 (20643)	22.37	21.67
		836.5 (20525)	22.37	21.67
		824.7 (20407)	22.40	21.67
	3RB-High (3)	848.3 (20643)	22.46	21.46
		836.5 (20525)	22.41	21.44
		824.7 (20407)	22.51	21.45
	3RB-Middle (1)	848.3 (20643)	22.50	21.49
		836.5 (20525)	22.47	21.51
		824.7 (20407)	22.52	21.55
	3RB-Low (0)	848.3 (20643)	22.49	21.50
		836.5 (20525)	22.42	21.45
		824.7 (20407)	22.46	21.49
	6RB (0)	848.3 (20643)	21.51	20.55
		836.5 (20525)	21.45	20.49
		824.7 (20407)	21.49	20.55
3MHz	1RB-High (14)	847.5 (20635)	22.47	21.67
		836.5 (20525)	22.38	21.62
		825.5 (20415)	22.43	21.67
	1RB-Middle (7)	847.5 (20635)	22.57	21.88
		836.5 (20525)	22.55	21.84
		825.5 (20415)	22.59	21.72
	1RB-Low (0)	847.5 (20635)	22.46	21.71
		836.5 (20525)	22.38	21.68
		825.5 (20415)	22.48	21.71
	8RB-High (7)	847.5 (20635)	21.51	20.53
		836.5 (20525)	21.41	20.47
		825.5 (20415)	21.45	20.50
	8RB-Middle (4)	847.5 (20635)	21.54	20.58
		836.5 (20525)	21.46	20.49
		825.5 (20415)	21.54	20.55
	8RB-Low (0)	847.5 (20635)	21.51	20.51
		836.5 (20525)	21.42	20.43
		825.5 (20415)	21.50	20.52
15RB (0)	847.5 (20635)	21.52	20.49	
	836.5 (20525)	21.42	20.43	
	825.5 (20415)	21.47	20.47	

5MHz	1RB-High (24)	846.5 (20625)	22.34	21.55	
		836.5 (20525)	22.29	21.46	
		826.5 (20425)	22.30	21.52	
	1RB-Middle (12)	846.5 (20625)	22.69	21.85	
		836.5 (20525)	22.63	21.85	
		826.5 (20425)	22.55	21.82	
	1RB-Low (0)	846.5 (20625)	22.38	21.62	
		836.5 (20525)	22.28	21.56	
		826.5 (20425)	22.37	21.60	
	12RB-High (13)	846.5 (20625)	21.48	20.50	
		836.5 (20525)	21.40	20.38	
		826.5 (20425)	21.41	20.43	
	12RB-Middle (6)	846.5 (20625)	21.52	20.54	
		836.5 (20525)	21.45	20.43	
		826.5 (20425)	21.47	20.48	
	12RB-Low (0)	846.5 (20625)	21.45	20.42	
		836.5 (20525)	21.41	20.42	
		826.5 (20425)	21.43	20.39	
	25RB (0)	846.5 (20625)	21.50	20.48	
		836.5 (20525)	21.49	20.43	
		826.5 (20425)	21.44	20.41	
	10MHz	1RB-High (49)	844 (20600)	22.95	22.21
			836.5 (20525)	22.89	22.25
			829 (20450)	22.85	22.06
1RB-Middle (24)		844 (20600)	23.07	22.44	
		836.5 (20525)	23.00	22.38	
		829 (20450)	23.00	22.24	
1RB-Low (0)		844 (20600)	22.90	22.22	
		836.5 (20525)	22.90	22.11	
		829 (20450)	22.89	22.13	
25RB-High (25)		844 (20600)	22.13	21.06	
		836.5 (20525)	22.02	20.97	
		829 (20450)	21.92	20.88	
25RB-Middle (12)		844 (20600)	22.11	21.06	
		836.5 (20525)	21.98	20.96	
		829 (20450)	21.98	20.98	
25RB-Low (0)		844 (20600)	22.06	21.03	
		836.5 (20525)	22.11	21.08	
		829 (20450)	21.96	20.93	
50RB (0)		844 (20600)	22.12	21.07	
		836.5 (20525)	22.08	21.03	
		829 (20450)	21.94	20.92	

LTE B12					
BANDWIDTH	Number of RBs	Frequency	QPSK	16QAM	
1.4MHz	1RB-High (5)	715.3 (23173)	22.51	21.85	
		707.5 (23095)	22.63	21.86	
		699.7 (23017)	22.54	21.88	
	1RB-Middle (3)	715.3 (23173)	22.65	21.97	
		707.5 (23095)	22.64	21.92	
		699.7 (23017)	22.66	21.91	
	1RB-Low (0)	715.3 (23173)	22.52	21.69	
		707.5 (23095)	22.59	21.93	
		699.7 (23017)	22.51	21.85	
	3RB-High (3)	715.3 (23173)	22.62	21.60	
		707.5 (23095)	22.70	21.65	
		699.7 (23017)	22.62	21.62	
	3RB-Middle (1)	715.3 (23173)	22.66	21.65	
		707.5 (23095)	22.71	21.71	
		699.7 (23017)	22.66	21.61	
	3RB-Low (0)	715.3 (23173)	22.60	21.55	
		707.5 (23095)	22.68	21.71	
		699.7 (23017)	22.61	21.58	
	6RB (0)	715.3 (23173)	21.60	20.73	
		707.5 (23095)	21.68	20.80	
		699.7 (23017)	21.59	20.70	
	3MHz	1RB-High (14)	714.5 (23165)	22.55	21.79
			707.5 (23095)	22.60	21.90
			700.5 (23025)	22.59	21.86
		1RB-Middle (7)	714.5 (23165)	22.67	22.01
			707.5 (23095)	22.78	21.92
			700.5 (23025)	22.76	22.06
1RB-Low (0)		714.5 (23165)	22.56	21.91	
		707.5 (23095)	22.64	21.88	
		700.5 (23025)	22.58	21.84	
8RB-High (7)		714.5 (23165)	21.55	20.65	
		707.5 (23095)	21.66	20.72	
		700.5 (23025)	21.59	20.68	
8RB-Middle (4)		714.5 (23165)	21.59	20.68	
		707.5 (23095)	21.69	20.76	
		700.5 (23025)	21.63	20.72	
8RB-Low (0)		714.5 (23165)	21.55	20.68	
		707.5 (23095)	21.64	20.74	
		700.5 (23025)	21.56	20.67	
15RB (0)		714.5 (23165)	21.55	20.59	
		707.5 (23095)	21.63	20.69	
		700.5 (23025)	21.57	20.63	

5MHz	1RB-High (24)	713.5 (23155)	22.40	21.72	
		707.5 (23095)	22.49	21.83	
		701.5 (23035)	22.51	21.79	
	1RB-Middle (12)	713.5 (23155)	22.69	21.94	
		707.5 (23095)	22.79	22.09	
		701.5 (23035)	22.79	22.08	
	1RB-Low (0)	713.5 (23155)	22.43	21.76	
		707.5 (23095)	22.57	21.77	
		701.5 (23035)	22.46	21.74	
	12RB-High (13)	713.5 (23155)	21.53	20.57	
		707.5 (23095)	21.63	20.69	
		701.5 (23035)	21.63	20.68	
	12RB-Middle (6)	713.5 (23155)	21.61	20.69	
		707.5 (23095)	21.70	20.73	
		701.5 (23035)	21.65	20.70	
	12RB-Low (0)	713.5 (23155)	21.57	20.60	
		707.5 (23095)	21.62	20.72	
		701.5 (23035)	21.60	20.67	
	25RB (0)	713.5 (23155)	21.59	20.58	
		707.5 (23095)	21.67	20.69	
		701.5 (23035)	21.65	20.68	
	10MHz	1RB-High (49)	711 (23130)	22.70	21.46
			707.5 (23095)	22.77	21.55
			704 (23060)	22.32	21.61
1RB-Middle (24)		711 (23130)	22.92	21.59	
		707.5 (23095)	22.90	21.89	
		704 (23060)	22.65	21.80	
1RB-Low (0)		711 (23130)	22.86	21.64	
		707.5 (23095)	22.60	21.61	
		704 (23060)	22.31	21.57	
25RB-High (25)		711 (23130)	21.85	20.53	
		707.5 (23095)	21.89	20.45	
		704 (23060)	21.78	20.49	
25RB-Middle (12)		711 (23130)	21.89	20.56	
		707.5 (23095)	21.89	20.48	
		704 (23060)	21.81	20.43	
25RB-Low (0)		711 (23130)	21.92	20.55	
		707.5 (23095)	21.89	20.47	
		704 (23060)	21.66	20.44	
50RB (0)		711 (23130)	21.88	20.51	
		707.5 (23095)	21.88	20.47	
		704 (23060)	21.66	20.41	

LTE B13				
BANDWIDTH	Number of RBs	Frequency	QPSK	16QAM
5MHz	1RB-High (24)	784.5 (23255)	22.42	21.69
		782 (23230)	22.29	21.61
		779.5 (23205)	22.30	21.45
	1RB-Middle (12)	784.5 (23255)	22.58	21.88
		782 (23230)	22.54	21.75
		779.5 (23205)	22.55	21.70
	1RB-Low (0)	784.5 (23255)	22.31	21.63
		782 (23230)	22.30	21.59
		779.5 (23205)	22.25	21.45
	12RB-High (13)	784.5 (23255)	21.40	20.43
		782 (23230)	21.33	20.39
		779.5 (23205)	21.53	20.55
	12RB-Middle (6)	784.5 (23255)	21.48	20.44
		782 (23230)	21.43	20.46
		779.5 (23205)	21.41	20.49
	12RB-Low (0)	784.5 (23255)	21.47	20.50
		782 (23230)	21.31	20.36
		779.5 (23205)	21.35	20.41
	25RB (0)	784.5 (23255)	21.48	20.43
		782 (23230)	21.34	20.37
		779.5 (23205)	21.46	20.48
10MHz	1RB-High (49)	782 (23230)	22.39	21.76
	1RB-Middle (24)	782 (23230)	22.49	21.83
	1RB-Low (0)	782 (23230)	22.38	21.67
	25RB-High (25)	782 (23230)	21.38	20.35
	25RB-Middle (12)	782 (23230)	21.44	20.47
	25RB-Low (0)	782 (23230)	21.33	20.38
	50RB (0)	782 (23230)	21.35	20.36

LTE B66				
BANDWIDTH	Number of RBs	Frequency	QPSK	16QAM
1.4MHz	1RB-High (5)	1779.3 (132665)	22.76	21.93
		1745 (132322)	22.68	21.99
		1710.7 (131979)	22.67	21.88
	1RB-Middle (3)	1779.3 (132665)	22.87	22.09
		1745 (132322)	22.82	21.95
		1710.7 (131979)	22.79	22.04
	1RB-Low (0)	1779.3 (132665)	22.72	22.01
		1745 (132322)	22.63	21.92
		1710.7 (131979)	22.65	21.94
	3RB-High (3)	1779.3 (132665)	22.82	21.79
		1745 (132322)	22.78	21.77
		1710.7 (131979)	22.71	21.75
	3RB-Middle (1)	1779.3 (132665)	22.86	21.87
		1745 (132322)	22.79	21.84
		1710.7 (131979)	22.77	21.77
	3RB-Low (0)	1779.3 (132665)	22.81	21.76
		1745 (132322)	22.76	21.76
		1710.7 (131979)	22.73	21.74
	6RB (0)	1779.3 (132665)	21.82	20.88
		1745 (132322)	21.78	20.83
		1710.7 (131979)	21.69	20.75
3MHz	1RB-High (14)	1778.5 (132657)	22.95	21.97
		1745 (132322)	22.71	22.03
		1711.5 (131987)	22.69	21.98
	1RB-Middle (7)	1778.5 (132657)	22.93	22.26
		1745 (132322)	22.92	22.07
		1711.5 (131987)	22.79	22.06
	1RB-Low (0)	1778.5 (132657)	22.82	22.14
		1745 (132322)	22.74	21.89
		1711.5 (131987)	22.70	21.99
	8RB-High (7)	1778.5 (132657)	21.81	20.80
		1745 (132322)	21.72	20.76
		1711.5 (131987)	21.71	20.74
	8RB-Middle (4)	1778.5 (132657)	21.88	20.88
		1745 (132322)	21.75	20.78
		1711.5 (131987)	21.75	20.76
	8RB-Low (0)	1778.5 (132657)	21.82	20.83
		1745 (132322)	21.73	20.79
		1711.5 (131987)	21.70	20.74
	15RB (0)	1778.5 (132657)	21.83	20.80
		1745 (132322)	21.71	20.70
		1711.5 (131987)	21.72	20.70

5MHz	1RB-High (24)	1777.5 (132647)	22.70	21.85
		1745 (132322)	22.70	21.90
		1712.5 (131997)	22.61	22.38
	1RB-Middle (12)	1777.5 (132647)	23.01	22.28
		1745 (132322)	22.92	22.05
		1712.5 (131997)	22.90	22.58
	1RB-Low (0)	1777.5 (132647)	22.77	21.97
		1745 (132322)	22.67	21.84
		1712.5 (131997)	22.62	22.30
	12RB-High (13)	1777.5 (132647)	21.86	20.83
		1745 (132322)	21.73	20.72
		1712.5 (131997)	21.67	21.16
	12RB-Middle (6)	1777.5 (132647)	21.89	20.88
		1745 (132322)	21.78	20.79
		1712.5 (131997)	21.73	21.20
	12RB-Low (0)	1777.5 (132647)	21.86	20.84
		1745 (132322)	21.71	21.18
		1712.5 (131997)	21.68	21.16
25RB (0)	1777.5 (132647)	21.86	20.83	
	1745 (132322)	21.76	21.19	
	1712.5 (131997)	21.70	21.15	
10MHz	1RB-High (49)	1775 (132622)	22.81	22.05
		1745 (132322)	22.81	22.11
		1715 (132022)	22.72	22.02
	1RB-Middle (24)	1775 (132622)	23.01	22.20
		1745 (132322)	22.89	22.14
		1715 (132022)	22.85	22.05
	1RB-Low (0)	1775 (132622)	22.93	22.07
		1745 (132322)	22.77	22.07
		1715 (132022)	22.74	21.95
	25RB-High (25)	1775 (132622)	21.99	20.96
		1745 (132322)	21.85	20.80
		1715 (132022)	21.82	20.74
	25RB-Middle (12)	1775 (132622)	21.94	20.92
		1745 (132322)	21.86	20.82
		1715 (132022)	21.80	20.75
	25RB-Low (0)	1775 (132622)	22.02	20.99
		1745 (132322)	21.83	20.76
		1715 (132022)	21.72	20.68
50RB (0)	1775 (132622)	21.97	20.95	
	1745 (132322)	21.86	20.79	
	1715 (132022)	21.75	20.73	



15MHz	1RB-High (74)	1772.5 (132597)	22.77	21.98
		1745 (132322)	22.76	21.99
		1717.5 (132047)	22.66	21.95
	1RB-Middle (37)	1772.5 (132597)	22.96	22.21
		1745 (132322)	22.81	22.04
		1717.5 (132047)	22.77	22.10
	1RB-Low (0)	1772.5 (132597)	22.87	22.16
		1745 (132322)	22.70	21.89
		1717.5 (132047)	22.64	21.98
	36RB-High (38)	1772.5 (132597)	21.99	20.97
		1745 (132322)	21.88	20.84
		1717.5 (132047)	21.80	20.78
	36RB-Middle (19)	1772.5 (132597)	21.98	20.93
		1745 (132322)	21.84	20.81
		1717.5 (132047)	21.82	20.78
	36RB-Low (0)	1772.5 (132597)	22.03	21.01
		1745 (132322)	21.83	20.80
		1717.5 (132047)	21.74	20.74
75RB (0)	1772.5 (132597)	22.02	20.97	
	1745 (132322)	21.86	20.80	
	1717.5 (132047)	21.81	20.76	
20MHz	1RB-High (99)	1770 (132572)	22.56	21.77
		1745 (132322)	22.55	21.80
		1720 (132072)	22.43	21.76
	1RB-Middle (50)	1770 (132572)	22.98	22.27
		1745 (132322)	22.88	22.11
		1720 (132072)	22.82	22.12
	1RB-Low (0)	1770 (132572)	22.68	21.86
		1745 (132322)	22.52	21.84
		1720 (132072)	22.51	21.71
	50RB-High (50)	1770 (132572)	21.96	20.91
		1745 (132322)	21.87	20.81
		1720 (132072)	21.80	20.77
	50RB-Middle (25)	1770 (132572)	21.98	20.96
		1745 (132322)	21.86	20.85
		1720 (132072)	21.79	20.77
	50RB-Low (0)	1770 (132572)	21.99	20.97
		1745 (132322)	21.90	20.86
		1720 (132072)	21.78	20.75
100RB (0)	1770 (132572)	21.99	20.94	
	1745 (132322)	21.86	20.83	
	1720 (132072)	21.78	20.69	

#### 11.4 Wi-Fi and BT Measurement result

The maximum output power of BT antenna is 7.85dBm.

The maximum tune up of BT antenna is 8.5dBm.

The average conducted power for Wi-Fi 2.4G is as following-Normal power (Receiver on/off):

802.11b	
Channel\data rate	5.5Mbps
11(2462MHz)	20.20
6(2437(MHz)	20.55
1(2412MHz)	20.17
Tune up	21.00
802.11g	
Channel\data rate	6Mbps
11(2462MHz)	17.27
6(2437(MHz)	17.85
1(2412MHz)	17.53
Tune up	19.00
802.11n-20MHz	
Channel\data rate	MCS0
11(2462MHz)	16.99
6(2437(MHz)	17.02
1(2412MHz)	16.75
Tune up	18.50

The tune up power for WIFI5G-Normal power (Receiver off)

Mode	Band	SISO	
		a	n
5G IEEE 802.11			
20Mhz	CH36~CH48	18+/-1	18+/-1
	CH52~CH64	18+/-1	18+/-1
	CH100~CH144	18+/-1	18+/-1
	CH149~CH165	18+/-1	18+/-1
40Mhz	CH36~CH48		17.5+/-1
	CH52~CH64		17.5+/-1
	CH100~CH144		17.5+/-1
	CH149~CH165		17.5+/-1

The tune up power for WIFI5G-Low power (Receiver on)

Mode	Band	SISO	
		a	n
5G IEEE 802.11			
20Mhz	CH36~CH48	12+/-1	12+/-1
	CH52~CH64	12+/-1	12+/-1
	CH100~CH144	12+/-1	12+/-1
	CH149~CH165	12+/-1	12+/-1
40Mhz	CH36~CH48		11.5+/-1
	CH52~CH64		11.5+/-1
	CH100~CH144		11.5+/-1
	CH149~CH165		11.5+/-1

The average conducted power for Wi-Fi 5G is as following-Normal power (Receiver off):

802.11a(dBm)	
Channel\data rate	6Mbps
36(5180 MHz)	18.05
40(5200 MHz)	18.10
44(5220 MHz)	18.18
48(5240 MHz)	18.26
52(5260 MHz)	18.24
56(5280 MHz)	18.59
60(5300 MHz)	18.90
64(5320 MHz)	18.76
100(5500 MHz)	18.30
104(5520 MHz)	18.02
108(5540 MHz)	18.05
112(5560 MHz)	18.39
116(5580 MHz)	18.12
120(5600 MHz)	18.03
124(5620 MHz)	18.52
128(5640 MHz)	18.11
132(5660 MHz)	18.06
136(5680 MHz)	18.48
140(5700 MHz)	18.40
144(5720 MHz)	18.09
149(5745 MHz)	18.89
153(5765 MHz)	18.66
157(5785 MHz)	18.58
161(5805 MHz)	18.37
165(5825 MHz)	18.10
Tune up	19.00

The average conducted power for Wi-Fi 5G is as following-Low power (Receiver on):

802.11a(dBm)	
Channel\data rate	6Mbps
36(5180 MHz)	11.62
40(5200 MHz)	12.16
44(5220 MHz)	11.73
48(5240 MHz)	12.05
52(5260 MHz)	11.83
56(5280 MHz)	11.73
60(5300 MHz)	11.62
64(5320 MHz)	12.01
100(5500 MHz)	11.97
104(5520 MHz)	11.81
108(5540 MHz)	11.83
112(5560 MHz)	12.13
116(5580 MHz)	12.19
120(5600 MHz)	12.26
124(5620 MHz)	12.49
128(5640 MHz)	12.62
132(5660 MHz)	12.77
136(5680 MHz)	12.74
140(5700 MHz)	12.87
144(5720 MHz)	12.71
149(5745 MHz)	12.33
153(5765 MHz)	12.03
157(5785 MHz)	11.72
161(5805 MHz)	11.71
165(5825 MHz)	11.65
Tune up	13.00

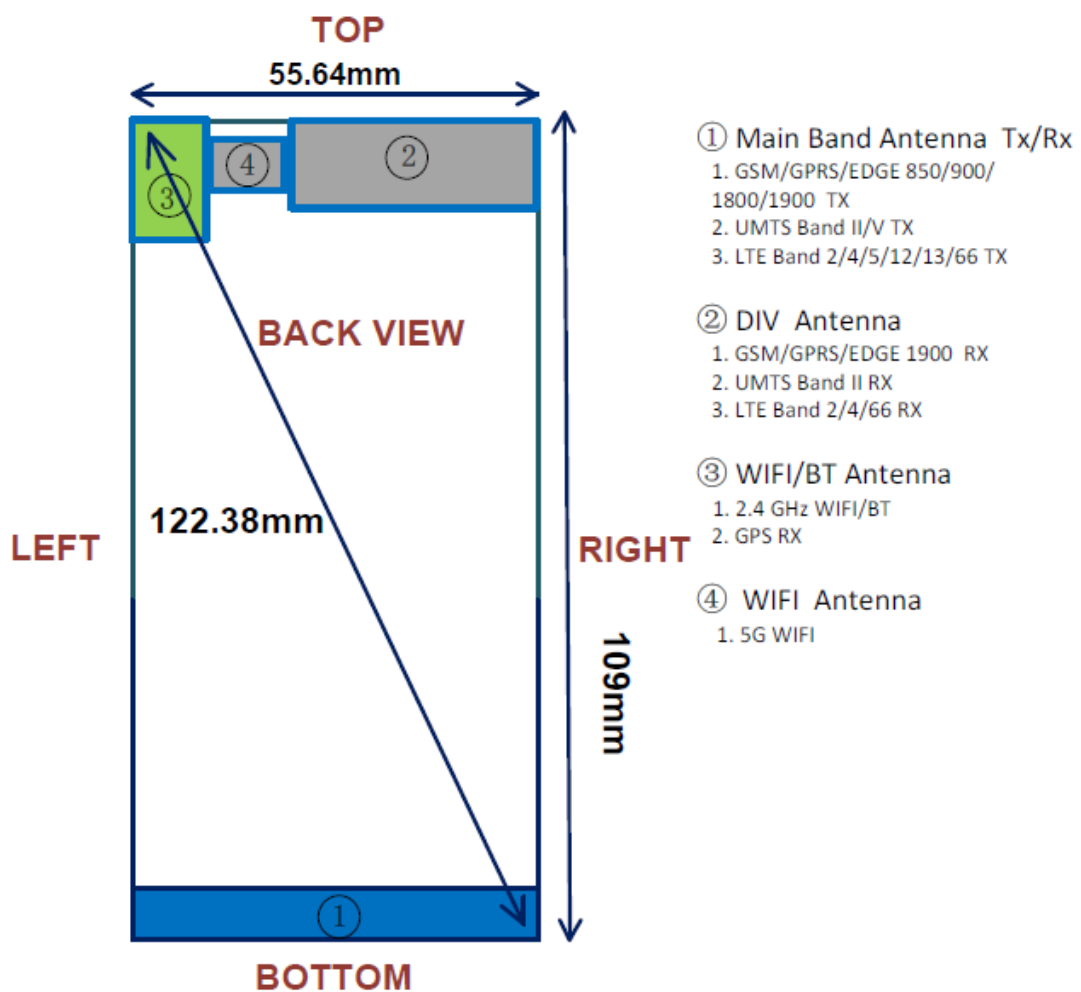
## 12 Simultaneous TX SAR Considerations

### 12.1 Introduction

The following procedures adopted from “FCC SAR Considerations for Cell Phones with Multiple Transmitters” are applicable to handsets with built-in unlicensed transmitters such as 802.11 a/b/g and Bluetooth devices which may simultaneously transmit with the licensed transmitter.

For this device, the BT and Wi-Fi can transmit simultaneous with other transmitters.

### 12.2 Transmit Antenna Separation Distances



Picture 12.1 Antenna Locations

### 13 Evaluation of Simultaneous

**Table 13.1: The sum of SAR values for Main antenna + WiFi-2.4G (1g)**

	Position	Main antenna	WiFi-2.4G	Sum
<b>Highest SAR value for Head</b>	Right head, Cheek (LTE B5)	0.66	0.61	<b>1.27</b>
<b>Highest SAR value for Body</b>	Rear 15mm (GSM1900)	1.12	0.08	<b>1.20</b>

**Table 13.2: The sum of SAR values for Main antenna + WiFi5G + BT (1g)**

	Position	Main antenna	WiFi-5G	BT	Sum
<b>Maximum reported SAR value for Head</b>	Right head, Cheek (LTE B5)	0.66	0.64	<0.01	<b>1.30</b>
<b>Maximum reported SAR value for Body</b>	Rear 15mm (GSM1900)	1.12	0.18	<0.01	<b>1.30</b>

**Conclusion:**

According to the above tables, the sum of reported SAR values is <1.6W/kg. So the simultaneous transmission SAR with volume scans is not required.

## 14 SAR Test Result

It is determined by user manual for the distance between the EUT and the phantom bottom. The distance is 10/15 mm and just applied to the condition of body worn accessory.

It is performed for all SAR measurements with area scan based 1-g SAR estimation (Fast SAR). A zoom scan measurement is added when the estimated 1-g SAR is the highest measured SAR in each exposure configuration, wireless mode and frequency band combination or more than 1.2W/kg.

The calculated SAR is obtained by the following formula:

$$\text{Reported SAR} = \text{Measured SAR} \times 10^{(P_{\text{Target}} - P_{\text{Measured}})/10}$$

Where  $P_{\text{Target}}$  is the power of manufacturing upper limit;

$P_{\text{Measured}}$  is the measured power in chapter 11.

**Table 14.1: Duty Cycle**

Mode	Duty Cycle
GPRS&EGPRS for GSM 850/1900	1:2
WCDMA&LTE FDD	1:1



**14.1 SAR results for 2G/3G/4G**
**Table 14.1-1: SAR Values (GSM 850 MHz Band - Head)**

Frequency		Side	Test Position	Figure No.	Conducted Power (dBm)	Max. tune-up Power (dBm)	Measured SAR(10g) (W/kg)	Reported SAR(10g) (W/kg)	Measured SAR(1g) (W/kg)	Reported SAR(1g) (W/kg)	Power Drift (dB)
Ch.	MHz										
		Ambient Temperature: 22.9 °C      Liquid Temperature: 22.5 °C									
190	836.6	Left	Cheek	/	32.13	33.00	0.183	<b>0.22</b>	0.274	<b>0.33</b>	-0.11
190	836.6	Left	Tilt	/	32.13	33.00	0.144	<b>0.18</b>	0.188	<b>0.23</b>	-0.04
251	848.8	Right	Cheek	Fig.1	32.00	33.00	0.25	<b>0.31</b>	0.382	<b>0.48</b>	-0.08
190	836.6	Right	Cheek	/	32.13	33.00	0.247	<b>0.30</b>	0.375	<b>0.46</b>	0.05
128	824.2	Right	Cheek	/	31.99	33.00	0.228	<b>0.29</b>	0.345	<b>0.44</b>	0.16
190	836.6	Right	Tilt	/	32.13	33.00	0.14	<b>0.17</b>	0.186	<b>0.23</b>	-0.03

**Table 14.1-2: SAR Values (GSM 850 MHz Band - Body)**

Frequency		Mode (number of timeslots)	Test Position	Figure No.	Conducted Power (dBm)	Max. tune-up Power (dBm)	Measured SAR(10g) (W/kg)	Reported SAR(10g) (W/kg)	Measured SAR(1g) (W/kg)	Reported SAR(1g) (W/kg)	Power Drift (dB)
Ch.	MHz										
		Ambient Temperature: 22.9 °C      Liquid Temperature: 22.5 °C									
190	836.6	GPRS (4)	Front	/	28.49	29.00	0.182	<b>0.20</b>	0.242	<b>0.27</b>	0.12
251	848.8	GPRS (4)	Rear	/	28.46	29.00	0.417	<b>0.47</b>	0.595	<b>0.67</b>	-0.18
190	836.6	GPRS (4)	Rear	/	28.49	29.00	0.486	<b>0.55</b>	0.669	<b>0.75</b>	0.16
128	824.2	GPRS (4)	Rear	Fig.2	28.47	29.00	0.496	<b>0.56</b>	0.684	<b>0.77</b>	-0.07
190	836.6	EGPRS (4)	Rear	Unfold	28.49	29.00	0.261	<b>0.29</b>	0.359	<b>0.40</b>	-0.19
128	824.2	GPRS (4)	Rear	/	28.44	29.00	0.535	<b>0.61</b>	0.677	<b>0.77</b>	0.18

Note: The distance between the EUT and the phantom bottom is 15mm.

**Table 14.1-3: SAR Values (GSM 1900 MHz Band - Head)**

Frequency		Side	Test Position	Figure No.	Conducted Power (dBm)	Max. tune-up Power (dBm)	Measured SAR(10g) (W/kg)	Reported SAR(10g) (W/kg)	Measured SAR(1g) (W/kg)	Reported SAR(1g) (W/kg)	Power Drift (dB)
Ch.	MHz										
		Ambient Temperature: 22.9 °C      Liquid Temperature: 22.5 °C									
810	1909.8	Left	Cheek	/	29.26	29.50	0.156	<b>0.16</b>	0.241	<b>0.25</b>	-0.05
661	1880	Left	Cheek	/	29.19	29.50	0.128	<b>0.14</b>	0.227	<b>0.24</b>	-0.06
512	1850.2	Left	Cheek	Fig.3	29.02	29.50	0.161	<b>0.18</b>	0.25	<b>0.28</b>	-0.15
661	1880	Left	Tilt	/	29.19	29.50	0.054	<b>0.06</b>	0.079	<b>0.08</b>	-0.15
661	1880	Right	Cheek	/	29.19	29.50	0.113	<b>0.12</b>	0.19	<b>0.20</b>	-0.19
661	1880	Right	Tilt	/	29.19	29.50	0.045	<b>0.05</b>	0.063	<b>0.07</b>	-0.07

**Table 14.1-4: SAR Values (GSM 1900 MHz Band – Body)**

Ambient Temperature: 22.9 °C      Liquid Temperature: 22.5°C											
Frequency		Mode (number of timeslots)	Test Position	Figure No.	Conducte d Power (dBm)	Max. tune-up Power (dBm)	Measured SAR(10g) (W/kg)	Reported SAR(10g)( W/kg)	Measured SAR(1g) (W/kg)	Reported SAR(1g) (W/kg)	Power Drift (dB)
Ch.	MHz										
661	1880	GPRS (4)	Front	/	25.38	26.00	0.172	<b>0.20</b>	0.277	<b>0.32</b>	-0.17
810	1909.8	GPRS (4)	Rear	/	25.56	26.00	0.427	<b>0.47</b>	0.689	<b>0.76</b>	-0.12
661	1880	GPRS (4)	Rear	/	25.38	26.00	0.507	<b>0.58</b>	0.838	<b>0.97</b>	-0.09
512	1850.2	GPRS (4)	Rear	Fig.4	25.15	26.00	0.548	<b>0.67</b>	0.921	<b>1.12</b>	0.06
661	1880	EGPRS (4)	Rear	Unfold	25.38	26.00	0.462	<b>0.53</b>	0.725	<b>0.84</b>	0.09
512	1850.2	GPRS (4)	Rear	/	25.18	26.00	0.531	<b>0.64</b>	0.877	<b>1.06</b>	0.12

Note: The distance between the EUT and the phantom bottom is 15mm

**Table 14.1-5: SAR Values (WCDMA 1900 MHz Band - Head)**

Ambient Temperature: 22.9 °C      Liquid Temperature: 22.5°C											
Frequency		Side	Test Position	Figur e No.	Conducted Power (dBm)	Max. tune- up Power (dBm)	Measure d SAR(10g ) (W/kg)	Reported SAR(10g ) (W/kg)	Measure d SAR(1g) (W/kg)	Reporte d SAR(1g) (W/kg)	Power Drift (dB)
Ch.	MHz										
9538	1907.6	Left	Cheek	/	23.96	24.00	0.241	<b>0.24</b>	0.401	<b>0.40</b>	-0.03
9400	1880	Left	Cheek	Fig.5	23.93	24.00	0.306	<b>0.31</b>	0.482	<b>0.49</b>	0.08
9262	1852.4	Left	Cheek	/	23.98	24.00	0.231	<b>0.23</b>	0.377	<b>0.38</b>	-0.04
9400	1880	Left	Tilt	/	23.93	24.00	0.045	<b>0.05</b>	0.079	<b>0.08</b>	-0.18
9400	1880	Right	Cheek	/	23.93	24.00	0.096	<b>0.10</b>	0.164	<b>0.17</b>	0.05
9400	1880	Right	Tilt	/	23.93	24.00	0.075	<b>0.08</b>	0.101	<b>0.10</b>	-0.12

**Table 14.1-6: SAR Values (WCDMA 1900 MHz Band – Body Worn)**

Ambient Temperature: 22.9 °C      Liquid Temperature: 22.5°C										
Frequency		Test Position	Figure No.	Conduct ed Power (dBm)	Max. tune-up Power (dBm)	Measured SAR(10g) (W/kg)	Reported SAR(10g) (W/kg)	Measured SAR(1g) (W/kg)	Reported SAR(1g) (W/kg)	Power Drift (dB)
Ch.	MHz									
9400	1880	Front	/	23.93	24.00	0.157	<b>0.16</b>	0.256	<b>0.26</b>	0.07
9538	1907.6	Rear	Fig.6	23.96	24.00	0.598	<b>0.60</b>	0.995	<b>1.00</b>	0.03
9400	1880	Rear	/	23.93	24.00	0.555	<b>0.56</b>	0.917	<b>0.93</b>	-0.05
9262	1852.4	Rear	/	23.98	24.00	0.557	<b>0.56</b>	0.937	<b>0.94</b>	0.07
9400	1880	Rear	Unfold	23.93	24.00	0.409	<b>0.42</b>	0.653	<b>0.66</b>	0.07

Note: The distance between the EUT and the phantom bottom is 15mm

**Table 14.1-7: SAR Values (WCDMA 850 MHz Band - Head)**

Ambient Temperature: 22.9 °C						Liquid Temperature: 22.5 °C					
Frequency		Side	Test Position	Figure No.	Conducted Power (dBm)	Max. tune-up Power (dBm)	Measured SAR(10g) (W/kg)	Reported SAR(10g) (W/kg)	Measured SAR(1g) (W/kg)	Reported SAR(1g) (W/kg)	Power Drift (dB)
Ch.	MHz										
4183	836.6	Left	Cheek	/	23.65	24.00	0.236	<b>0.26</b>	0.35	<b>0.38</b>	0.14
4183	836.6	Left	Tilt	/	23.65	24.00	0.163	<b>0.18</b>	0.213	<b>0.23</b>	-0.01
4183	836.6	Right	Cheek	/	23.65	24.00	0.264	<b>0.29</b>	0.402	<b>0.44</b>	-0.10
4233	846.6	Right	Cheek	Fig.7	23.53	24.00	0.34	<b>0.38</b>	0.507	<b>0.56</b>	-0.06
4132	826.4	Right	Cheek	/	23.51	24.00	0.252	<b>0.28</b>	0.38	<b>0.43</b>	0.12
4183	836.6	Right	Tilt	/	23.65	24.00	0.185	<b>0.20</b>	0.242	<b>0.26</b>	0.08

**Table 14.1-8: SAR Values (WCDMA 850 MHz Band - Body)**

Ambient Temperature: 22.9 °C						Liquid Temperature: 22.5 °C					
Frequency		Test Position	Figure No.	Conducted Power (dBm)	Max. tune-up Power (dBm)	Measured SAR(10g) (W/kg)	Reported SAR(10g) (W/kg)	Measured SAR(1g) (W/kg)	Reported SAR(1g) (W/kg)	Power Drift (dB)	
Ch.	MHz										
4183	836.6	Front	/	23.65	24.00	0.212	<b>0.23</b>	0.281	<b>0.30</b>	-0.07	
4233	846.6	Rear	Fig.8	23.53	24.00	0.547	<b>0.61</b>	0.752	<b>0.84</b>	0.09	
4183	836.6	Rear	/	23.65	24.00	0.521	<b>0.56</b>	0.721	<b>0.78</b>	-0.17	
4132	826.4	Rear	/	23.51	24.00	0.508	<b>0.57</b>	0.702	<b>0.79</b>	0.07	
4183	836.6	Rear	Unfold	23.65	24.00	0.256	<b>0.28</b>	0.354	<b>0.38</b>	0.03	

Note: The distance between the EUT and the phantom bottom is 15mm.

**Table 14.1-9: SAR Values (LTE Band2 - Head)**

Ambient Temperature: 22.9 °C						Liquid Temperature: 22.5 °C						
Frequency		Mode	Side	Test Position	Figure No.	Conducted Power (dBm)	Max. tune-up Power (dBm)	Measured SAR(10g) (W/kg)	Reported SAR(10g) (W/kg)	Measured SAR(1g) (W/kg)	Reported SAR(1g) (W/kg)	Power Drift (dB)
Ch.	MHz											
19100	1900	1RB_Mid	Left	Cheek	Fig.9	22.84	24.00	0.273	<b>0.36</b>	0.442	<b>0.58</b>	-0.20
19100	1900	1RB_Mid	Left	Tilt	/	22.84	24.00	0.179	<b>0.23</b>	0.255	<b>0.33</b>	-0.02
19100	1900	1RB_Mid	Right	Cheek	/	22.84	24.00	0.175	<b>0.23</b>	0.315	<b>0.41</b>	0.17
19100	1900	1RB_Mid	Right	Tilt	/	22.84	24.00	0.112	<b>0.15</b>	0.153	<b>0.20</b>	0.10
19100	1900	50RB-Low	Left	Cheek	/	21.87	23.00	0.224	<b>0.29</b>	0.347	<b>0.45</b>	0.17
19100	1900	50RB-Low	Left	Tilt	/	21.87	23.00	0.095	<b>0.12</b>	0.123	<b>0.16</b>	-0.06
19100	1900	50RB-Low	Right	Cheek	/	21.87	23.00	0.093	<b>0.12</b>	0.155	<b>0.20</b>	0.16
19100	1900	50RB-Low	Right	Tilt	/	21.87	23.00	0.063	<b>0.08</b>	0.078	<b>0.10</b>	-0.16

Note1: The LTE mode is QPSK\_20MHz.

**Table 14.1-10: SAR Values (LTE Band2 – Body)**

Frequency		Mode	Figure No.	Conduct ed Power (dBm)	Max. tune-up Power (dBm)	Measured SAR(10g) (W/kg)	Reported SAR(10g) (W/kg)	Measured SAR(1g) (W/kg)	Reported SAR(1g) (W/kg)	Power Drift (dB)
Ch.	MHz									
19100	1900	1RB-Mid Front	/	22.84	24.00	0.144	<b>0.19</b>	0.231	<b>0.30</b>	0.12
19100	1900	1RB-Mid Rear	Fig.10	22.84	24.00	0.463	<b>0.60</b>	0.763	<b>1.00</b>	0.19
19100	1900	1RB-Mid Rear	Unfold	22.84	24.00	0.443	<b>0.58</b>	0.682	<b>0.89</b>	-0.15
19100	1900	50RB-Low Front	/	21.87	23.00	0.112	<b>0.15</b>	0.178	<b>0.23</b>	-0.18
19100	1900	50RB-Low Rear	/	21.87	23.00	0.349	<b>0.45</b>	0.575	<b>0.75</b>	0.04
19100	1900	50RB-Low Rear	Unfold	21.87	23.00	0.336	<b>0.44</b>	0.516	<b>0.67</b>	0.16

Note1: The distance between the EUT and the phantom bottom is 15mm.

Note2: The LTE mode is QPSK\_20MHz.

**Table 14.1-11: SAR Values (LTE Band5 - Head)**

Frequency		Mode	Side	Test Position	Figure No.	Conduct ed Power (dBm)	Max. tune-up Power (dBm)	Measure d SAR(10g) (W/kg)	Reported SAR(10g) (W/kg)	Measure d SAR(1g) (W/kg)	Reporte d SAR(1g) (W/kg)	Power Drift (dB)
Ch.	MHz											
20600	844	1RB_Mid	Left	Cheek	/	23.07	24.00	0.246	<b>0.30</b>	0.396	<b>0.49</b>	-0.04
20600	844	1RB_Mid	Left	Tilt	/	23.07	24.00	0.181	<b>0.22</b>	0.261	<b>0.32</b>	-0.10
20600	844	1RB_Mid	Right	Cheek	Fig.11	23.07	24.00	0.341	<b>0.42</b>	0.536	<b>0.66</b>	-0.1
20600	844	1RB_Mid	Right	Tilt	/	23.07	24.00	0.235	<b>0.29</b>	0.355	<b>0.44</b>	0.17
20600	844	25RB-High	Left	Cheek	/	22.13	23.00	0.205	<b>0.25</b>	0.332	<b>0.41</b>	-0.03
20600	844	25RB-High	Left	Tilt	/	22.13	23.00	0.16	<b>0.20</b>	0.229	<b>0.28</b>	-0.03
20600	844	25RB-High	Right	Cheek	/	22.13	23.00	0.279	<b>0.34</b>	0.436	<b>0.53</b>	-0.06
20600	844	25RB-High	Right	Tilt	/	22.13	23.00	0.181	<b>0.22</b>	0.27	<b>0.33</b>	0.06

Note1: The LTE mode is QPSK\_10MHz.

**Table 14.1-12: SAR Values (LTE Band5 – Body)**

Frequency		Mode	Figure No.	Conduct ed Power (dBm)	Max. tune-up Power (dBm)	Measured SAR(10g) (W/kg)	Reported SAR(10g) (W/kg)	Measured SAR(1g) (W/kg)	Reported SAR(1g) (W/kg)	Power Drift (dB)	
Ch.	MHz										
		Ambient Temperature: 22.9 °C				Liquid Temperature: 22.5 °C					
20600	844	1RB-Mid Front	/	23.07	24.00	0.181	<b>0.22</b>	0.243	<b>0.30</b>	0.15	
20600	844	1RB-Mid Rear	Fig.12	23.07	24.00	0.46	<b>0.57</b>	0.631	<b>0.78</b>	-0.17	
20600	844	1RB-Mid Rear	Unfold	23.07	24.00	0.187	<b>0.23</b>	0.262	<b>0.32</b>	-0.19	
20600	844	25RB-High Front	/	22.13	23.00	0.141	<b>0.17</b>	0.189	<b>0.23</b>	-0.01	
20600	844	25RB-High Rear	/	22.13	23.00	0.391	<b>0.48</b>	0.538	<b>0.66</b>	-0.11	
20600	844	25RB-High Rear	Unfold	22.13	23.00	0.15	<b>0.18</b>	0.208	<b>0.25</b>	0.11	

Note1: The distance between the EUT and the phantom bottom is 15mm.

Note2: The LTE mode is QPSK\_10MHz.

**Table 14.1-13: SAR Values (LTE Band12 - Head)**

Frequency		Mode	Side	Test Position	Figure No./Note	Conduct ed Power (dBm)	Max. tune-up Power (dBm)	Measured SAR(10g) (W/kg)	Reported SAR(10g) (W/kg)	Measured SAR(1g) (W/kg)	Reported SAR(1g) (W/kg)	Power Drift (dB)
Ch.	MHz											
		Ambient Temperature: 22.9 °C				Liquid Temperature: 22.5 °C						
23130	711	1RB_Mid	Left	Cheek	Fig.13	22.92	24.00	0.124	<b>0.16</b>	0.194	<b>0.25</b>	-0.19
23130	711	1RB_Mid	Left	Tilt	/	22.92	24.00	<0.01	<b>&lt;0.01</b>	<0.01	<b>&lt;0.01</b>	/
23130	711	1RB_Mid	Right	Cheek	/	22.92	24.00	0.17	<b>0.22</b>	0.184	<b>0.24</b>	0.17
23130	711	1RB_Mid	Right	Tilt	/	22.92	24.00	0.059	<b>0.08</b>	0.076	<b>0.10</b>	0.07
23130	711	25RB_High	Left	Cheek	/	21.92	23.00	0.091	<b>0.12</b>	0.143	<b>0.18</b>	0.13
23130	711	25RB_High	Left	Tilt	/	21.92	23.00	<0.01	<b>&lt;0.01</b>	<0.01	<b>&lt;0.01</b>	/
23130	711	25RB_High	Right	Cheek	/	21.92	23.00	0.13	<b>0.17</b>	0.141	<b>0.18</b>	-0.03
23130	711	25RB_High	Right	Tilt	/	21.92	23.00	0.054	<b>0.07</b>	0.061	<b>0.08</b>	0.16

Note: The LTE mode is QPSK\_10MHz.

**Table 14.1-14: SAR Values (LTE Band12 –Body)**

Frequency		Mode	Figure No.	Conduct ed Power (dBm)	Max. tune-up Power (dBm)	Measured SAR(10g) (W/kg)	Reported SAR(10g) (W/kg)	Measured SAR(1g) (W/kg)	Reported SAR(1g) (W/kg)	Power Drift (dB)	
Ch.	MHz										
		Ambient Temperature: 22.9 °C				Liquid Temperature: 22.5 °C					
23060	704	1RB-Mid Front	/	23.64	24.5	0.098	<b>0.12</b>	0.125	<b>0.15</b>	-0.05	
23060	704	1RB-Mid Rear	Fig.14	23.64	24.5	0.156	<b>0.19</b>	0.202	<b>0.25</b>	-0.04	
23060	704	1RB-Mid Rear	Unfold	23.64	24.5	0.102	<b>0.12</b>	0.139	<b>0.17</b>	-0.01	
23060	704	25RB-High Front	/	23.64	24.5	0.062	<b>0.08</b>	0.086	<b>0.10</b>	-0.05	
23060	704	25RB-High Rear	/	23.64	24.5	0.038	<b>0.05</b>	0.068	<b>0.08</b>	0.08	
23130	711	25RB-High Rear	Unfold	22.69	23.5	0.079	<b>0.10</b>	0.1	<b>0.12</b>	-0.15	

Note1: The distance between the EUT and the phantom bottom is 10mm.

Note2: The LTE mode is QPSK\_10MHz.

**Table 14.1-15: SAR Values (LTE Band13 - Head)**

Frequency		Mode	Side	Test Position	Figure No.	Ambient Temperature: 22.9 °C		Liquid Temperature: 22.5°C		Measured SAR(1g) (W/kg)	Reported SAR(1g) (W/kg)	Power Drift (dB)
Ch.	MHz					Conducted Power (dBm)	Max. tune-up Power (dBm)	Measured SAR(10g) (W/kg)	Reported SAR(10g) (W/kg)			
23230	782	1RB-Mid	Left	Cheek	/	22.49	24.00	0.079	<b>0.11</b>	0.161	<b>0.23</b>	-0.12
23230	782	1RB-Mid	Left	Tilt	/	22.49	24.00	0.052	<b>0.07</b>	0.064	<b>0.09</b>	-0.07
23230	782	1RB-Mid	Right	Cheek	Fig.15	22.49	24.00	0.229	<b>0.32</b>	0.342	<b>0.48</b>	-0.17
23230	782	1RB-Mid	Right	Tilt	/	22.49	24.00	0.067	<b>0.09</b>	0.083	<b>0.12</b>	-0.19
23230	782	25RB-Mid	Left	Cheek	/	21.44	23.00	0.062	<b>0.09</b>	0.125	<b>0.18</b>	0.13
23230	782	25RB-Mid	Left	Tilt	/	21.44	23.00	0.04	<b>0.06</b>	0.049	<b>0.07</b>	-0.01
23230	782	25RB-Mid	Right	Cheek	/	21.44	23.00	0.177	<b>0.25</b>	0.265	<b>0.38</b>	-0.12
23230	782	25RB-Mid	Right	Tilt	/	21.44	23.00	0.055	<b>0.08</b>	0.067	<b>0.10</b>	0.16

Note1: The LTE mode is QPSK\_10MHz.

**Table 14.1-16: SAR Values (LTE Band13 - Body)**

Frequency		Mode	Figure No.	Ambient Temperature: 22.9 °C		Liquid Temperature: 22.5°C		Measured SAR(1g) (W/kg)	Reported SAR(1g) (W/kg)	Power Drift (dB)
Ch.	MHz			Conducted Power (dBm)	Max. tune-up Power (dBm)	Measured SAR(10g) (W/kg)	Reported SAR(10g) (W/kg)			
23230	782	1RB-Mid Front	/	23.57	24.5	0.155	<b>0.19</b>	0.26	<b>0.32</b>	-0.16
23230	782	1RB-Mid Rear	Fig.16	23.57	24.5	0.237	<b>0.29</b>	0.399	<b>0.49</b>	-0.09
23230	782	1RB-Mid Rear	Unfold	23.57	24.5	0.203	<b>0.25</b>	0.375	<b>0.46</b>	0.10
23230	782	25RB-Mid Front	/	23.57	24.5	0.119	<b>0.15</b>	0.218	<b>0.27</b>	-0.02
23230	782	25RB-Mid Rear	/	23.57	24.5	0.077	<b>0.10</b>	0.168	<b>0.21</b>	0.13
23230	782	25RB-Mid Rear	Unfold	22.59	23.5	0.118	<b>0.15</b>	0.199	<b>0.25</b>	0.17

Note1: The distance between the EUT and the phantom bottom is 10mm.

Note2: The LTE mode is QPSK\_10MHz.

**Table 14.1-17: SAR Values (LTE Band66 - Head)**

Frequency		Mode	Side	Test Position	Figure No.	Ambient Temperature: 22.9 °C		Liquid Temperature: 22.5 °C		Measured SAR(1g) (W/kg)	Reported SAR(1g) (W/kg)	Power Drift (dB)
Ch.	MHz					Conducted Power (dBm)	Max. tune-up Power (dBm)	Measured SAR(10g) (W/kg)	Reported SAR(10g) (W/kg)			
132572	1770	1RB-Mid	Left	Cheek	Fig.17	22.98	24.00	0.231	<b>0.29</b>	0.338	<b>0.43</b>	0.15
132572	1770	1RB-Mid	Left	Tilt	/	22.98	24.00	0.07	<b>0.09</b>	0.094	<b>0.12</b>	0.12
132572	1770	1RB-Mid	Right	Cheek	/	22.98	24.00	0.146	<b>0.18</b>	0.223	<b>0.28</b>	-0.01
132572	1770	1RB-Mid	Right	Tilt	/	22.98	24.00	0.05	<b>0.06</b>	0.068	<b>0.09</b>	0.15
132572	1770	50RB-Low	Left	Cheek	/	21.99	23.00	0.17	<b>0.21</b>	0.247	<b>0.31</b>	-0.17
132572	1770	50RB-Low	Left	Tilt	/	21.99	23.00	0.052	<b>0.07</b>	0.068	<b>0.09</b>	-0.18
132572	1770	50RB-Low	Right	Cheek	/	21.99	23.00	0.094	<b>0.12</b>	0.142	<b>0.18</b>	-0.15
132572	1770	50RB-Low	Right	Tilt	/	21.99	23.00	0.036	<b>0.05</b>	0.048	<b>0.06</b>	-0.13

Note1: The LTE mode is QPSK\_20MHz.

**Table 14.1-18: SAR Values (LTE Band66 – Body worn)**

Frequency		Mode	Figure No.	Ambient Temperature: 22.9 °C		Liquid Temperature: 22.5 °C		Measured SAR(1g) (W/kg)	Reported SAR(1g) (W/kg)	Power Drift (dB)
Ch.	MHz			Conducted Power (dBm)	Max. tune-up Power (dBm)	Measured SAR(10g) (W/kg)	Reported SAR(10g) (W/kg)			
132572	1770	1RB-Mid Front	/	22.98	24.00	0.097	<b>0.12</b>	0.151	<b>0.19</b>	0.08
132572	1770	1RB-Mid Rear	/	22.98	24.00	0.379	<b>0.48</b>	0.628	<b>0.79</b>	0.01
132322	1745	1RB-Mid Rear	Unfold	22.98	24.00	0.479	<b>0.61</b>	0.763	<b>0.96</b>	0.12
132572	1770	1RB-Mid Rear	Unfold	22.88	24.00	0.454	<b>0.59</b>	0.727	<b>0.94</b>	-0.14
132072	1720	1RB-Mid Rear	Unfold/Fig.18	22.82	24.00	0.479	<b>0.63</b>	0.77	<b>1.01</b>	0.16
132072	1720	100RB Rear	Unfold	21.78	23.00	0.347	<b>0.46</b>	0.562	<b>0.74</b>	-0.11
132572	1770	50RB-Low Front	/	21.99	23.00	0.064	<b>0.08</b>	0.1	<b>0.13</b>	0.17
132572	1770	50RB-Low Rear	/	21.99	23.00	0.289	<b>0.36</b>	0.477	<b>0.60</b>	0.17
132572	1770	50RB-Low Rear	Unfold	21.99	23.00	0.34	<b>0.43</b>	0.543	<b>0.69</b>	0.14

Note1: The distance between the EUT and the phantom bottom is 15mm.

Note2: The LTE mode is QPSK\_20MHz.



## 14.2 SAR Evaluation for WIFI

The maximum output power specified for production units are determined for all applicable 802.11 transmission modes in each standalone and aggregated frequency band. Maximum output power is measured for the highest maximum output power configuration(s) in each frequency band according to the default power measurement procedures.

When the same transmission mode configurations have the same maximum output power on the same channel for the 802.11 a/g/n/ac/ax modes, the channel in the lower order/sequence 802.11 mode (i.e. a, g, n ac then ax) is selected.

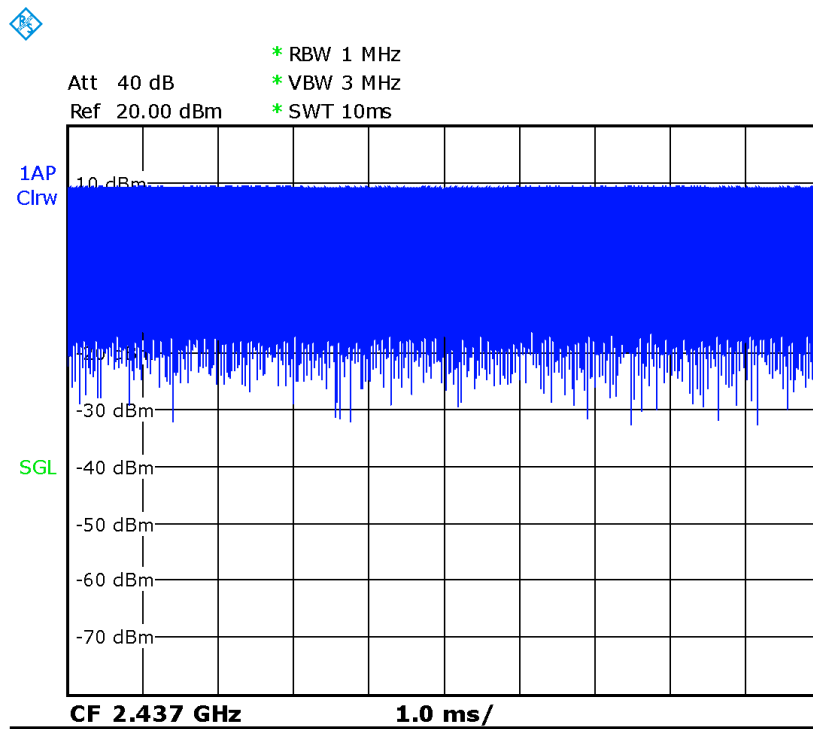
SAR Test reduction was applied from KDB 248227 guidance, when the same maximum power is specified for multiple transmission modes in a frequency band, the largest channel bandwidth, lowest order modulation, lowest data rate and lowest order 802.11a/g/n/ac mode is used for SAR measurement, on the highest measured output power channel in the initial test configuration, for each frequency band. Additional output power measurements were not deemed necessary.

**Table 14.2-1: SAR Values (WLAN2.4G-Head)**

Frequency		Mode	Test Position	Figure No.	Ambient Temperature: 22.9°C		Liquid Temperature: 22.5°C		Measured SAR(1g) (W/kg)	Reported SAR(1g)(W/kg)	Power Drift (dB)
Ch.	MHz				Conducted Power (dBm)	Max. tune-up Power (dBm)	Measured SAR(10g) (W/kg)	Reported SAR(10g)(W/kg)			
6	2437	11b	Left Cheek	/	20.55	21.00	0.099	<b>0.11</b>	0.283	<b>0.31</b>	-0.19
6	2437	11b	Left Tilt	/	20.55	21.00	0.019	<b>0.02</b>	0.042	<b>0.05</b>	0.11
11	2462	11b	Right Cheek	Fig.19	20.20	21.00	0.261	<b>0.31</b>	0.506	<b>0.61</b>	-0.03
6	2437	11b	Right Cheek	/	20.55	21.00	0.235	<b>0.26</b>	0.462	<b>0.51</b>	-0.08
1	2412	11b	Right Cheek	/	20.17	21.00	0.152	<b>0.18</b>	0.325	<b>0.39</b>	-0.04
6	2437	11b	Right Tilt	/	20.55	21.00	0.024	<b>0.03</b>	0.045	<b>0.05</b>	0.06

According to the KDB248227 D01, The reported SAR must be scaled to 100% transmission duty factor to determine compliance at the maximum tune-up tolerance limit. The scaled reported SAR is presented as below.





Picture 14.2-1 Duty factor plot

Table 14.2-2: SAR Values (WLAN2.4G - Head) – Scaled Reported SAR

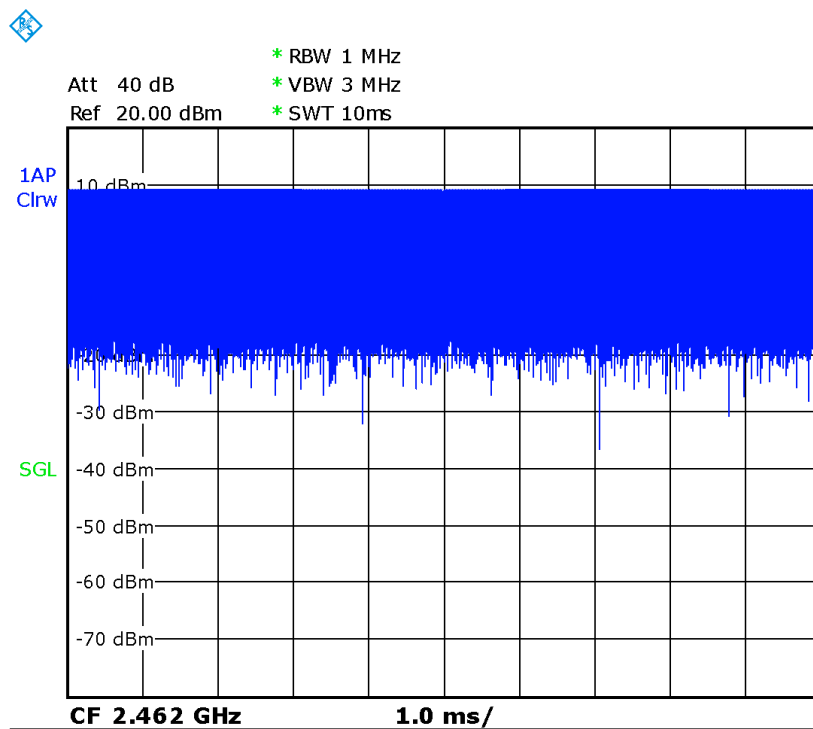
Frequency		Mode	Test Position	Actual duty factor	maximum duty factor	Ambient Temperature: 22.9 °C      Liquid Temperature: 22.5 °C	
Ch.	MHz					Reported SAR (1g)(W/kg)	Scaled reported SAR (1g)(W/kg)
11	2462	11b	Right Cheek	100%	100%	<b>0.61</b>	<b>0.61</b>

SAR is not required for OFDM because the 802.11b adjusted SAR  $\leq$  1.2 W/kg.

**Table 14.2-3: SAR Values (WLAN2.4G - Body)**

Frequency		Mode	Test Position	Figure No.	Conducte d Power (dBm)	Max. tune- up Power (dBm)	Measured SAR(10g) (W/kg)	Reported SAR(10g)( W/kg)	Measured SAR(1g) (W/kg)	Reported SAR(1g)(W /kg)	Power Drift (dB)
Ch.	MHz										
6	2437	11b	Front 15mm	/	20.55	21.00	0.018	<b>0.02</b>	0.033	<b>0.04</b>	-0.08
6	2437	11b	Rear 15mm	/	20.55	21.00	0.037	<b>0.04</b>	0.07	<b>0.08</b>	-0.15
6	2437	11b	Rear 15mm	Unfold/Fig.20	20.55	21.00	0.073	<b>0.08</b>	0.131	<b>0.15</b>	0.08

According to the KDB248227 D01, The reported SAR must be scaled to 100% transmission duty factor to determine compliance at the maximum tune-up tolerance limit. The scaled reported SAR is presented as below.


**Picture 14.2-2 Duty factor plot**
**Table 14.2-4: SAR Values (WLAN2.4G - Body) – Scaled Reported SAR**

Frequency		Mode	Test Position	Actual duty factor	maximum duty factor	Reported SAR (1g)(W/kg)	Scaled reported SAR (1g)(W/kg)
Ch.	MHz						
6	2437	11b	Rear 15mm Unfold	100%	100%	<b>0.15</b>	<b>0.15</b>

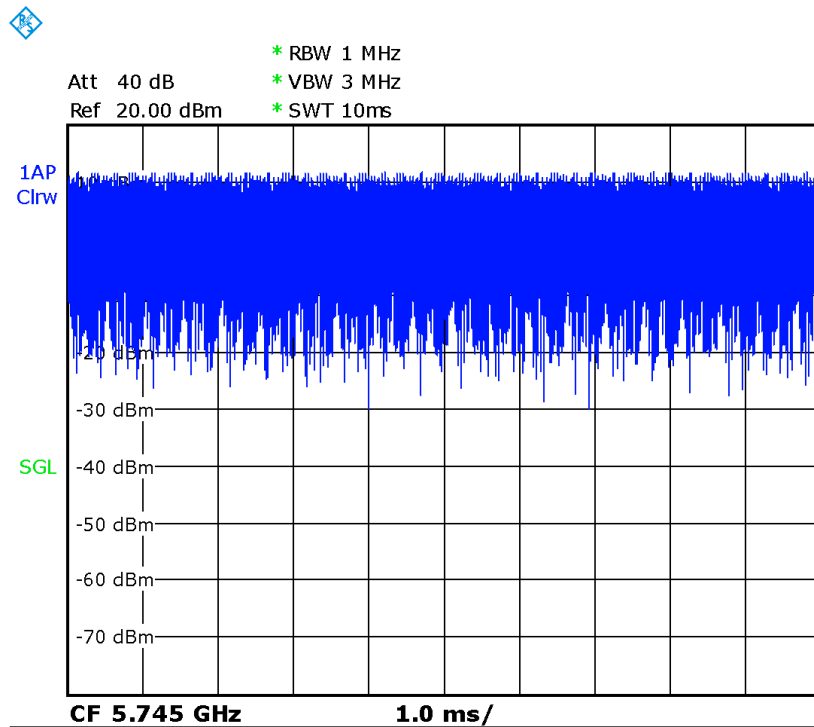
SAR is not required for OFDM because the 802.11b adjusted SAR  $\leq 1.2$  W/kg.

**Table 14.2-5: SAR Values (WLAN5G-Head)**

Ambient Temperature: 22.9°C      Liquid Temperature: 22.5°C

Frequency		Mode	Test Position	Figure No.	Conducted Power (dBm)	Max. tune-up Power (dBm)	Measured SAR(10g) (W/kg)	Reported SAR(10g)(W/kg)	Measured SAR(1g) (W/kg)	Reported SAR(1g)(W/kg)	Power Drift (dB)
Ch.	MHz										
64	5320	11a	Left Cheek	/	12.01	13.00	0.048	<b>0.06</b>	0.159	<b>0.20</b>	0.07
64	5320	11a	Left Tilt	/	12.01	13.00	0.021	<b>0.03</b>	0.061	<b>0.08</b>	-0.05
64	5320	11a	Right Cheek	/	12.01	13.00	0.105	<b>0.13</b>	0.313	<b>0.39</b>	0.03
64	5320	11a	Right Tilt	/	12.01	13.00	0.027	<b>0.03</b>	0.068	<b>0.09</b>	0.03
140	5700	11a	Left Cheek	/	12.87	13.00	0.018	<b>0.02</b>	0.085	<b>0.09</b>	0.07
140	5700	11a	Left Tilt	/	12.87	13.00	0.011	<b>0.01</b>	0.061	<b>0.06</b>	0.05
140	5700	11a	Right Cheek	/	12.87	13.00	0.074	<b>0.08</b>	0.233	<b>0.24</b>	0.04
140	5700	11a	Right Tilt	/	12.87	13.00	0.007	<b>0.01</b>	0.031	<b>0.03</b>	-0.07
149	5745	11a	Left Cheek	/	12.33	13.00	0.024	<b>0.03</b>	0.109	<b>0.13</b>	-0.05
149	5745	11a	Left Tilt	/	12.33	13.00	0.012	<b>0.01</b>	0.064	<b>0.07</b>	-0.12
149	5745	11a	Right Cheek	Fig.21	12.33	13.00	0.147	<b>0.17</b>	0.552	<b>0.64</b>	-0.09
149	5745	11a	Right Tilt	/	12.33	13.00	0.01	<b>0.01</b>	0.054	<b>0.06</b>	-0.02

According to the KDB248227 D01, The reported SAR must be scaled to 100% transmission duty factor to determine compliance at the maximum tune-up tolerance limit. The scaled reported SAR is presented as below.



Picture 14.2-3 Duty factor plot

Table 14.2-6: SAR Values (WLAN5G - Head) – Scaled Reported SAR

Frequency		Mode	Test Position	Actual duty factor	maximum duty factor	Reported SAR (1g)(W/kg)	Scaled reported SAR (1g)(W/kg)
Ch.	MHz						
Ambient Temperature: 22.9 °C      Liquid Temperature: 22.5°C							
149	5745	11a	Right Cheek	100%	100%	<b>0.64</b>	<b>0.64</b>

SAR is not required for OFDM because the 802.11b adjusted SAR  $\leq$  1.2 W/kg.

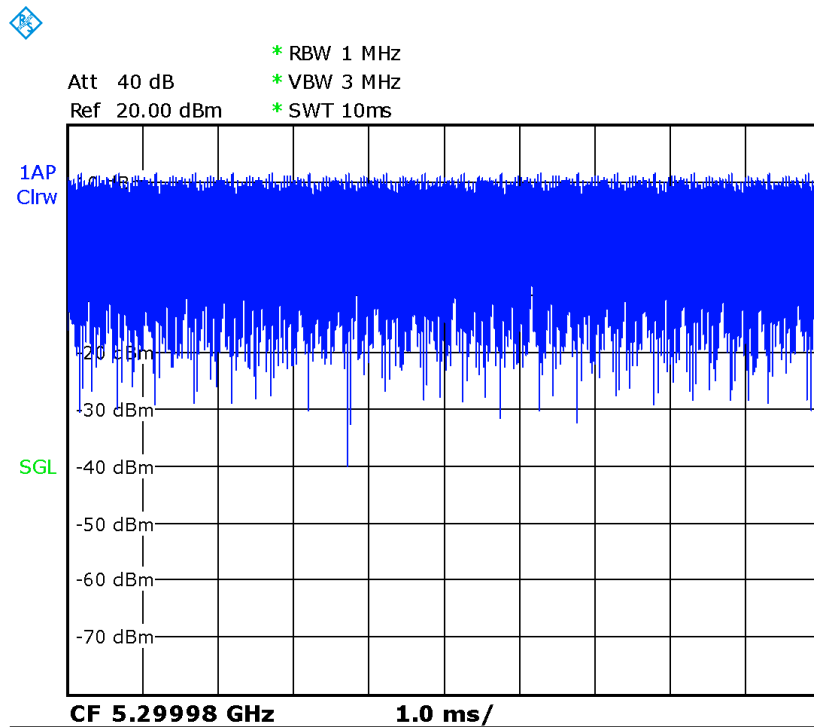
**Table 14.2-7: SAR Values (WLAN5G - Body)**

Ambient Temperature: 22.9 °C

Liquid Temperature: 22.5°C

Frequency		Mode	Test Position	Figure No.	Conducte d Power (dBm)	Max. tune- up Power (dBm)	Measured SAR(10g) (W/kg)	Reported SAR(10g)( W/kg)	Measured SAR(1g) (W/kg)	Reported SAR(1g)(W /kg)	Power Drift (dB)
Ch.	MHz										
60	5300	11a	Front 15mm	/	18.90	19.00	0.022	<b>0.02</b>	0.056	<b>0.06</b>	-0.12
60	5300	11a	Rear 15mm	/	18.90	19.00	0.071	<b>0.07</b>	0.179	<b>0.18</b>	0.12
60	5300	11a	Rear 15mm	Unfold/Fig.22	18.90	19.00	0.126	<b>0.13</b>	0.337	<b>0.34</b>	0.04
124	5620	11a	Front 15mm	/	18.52	19.00	<0.01	<b>&lt;0.01</b>	<0.01	<b>&lt;0.01</b>	/
124	5620	11a	Rear 15mm	/	18.52	19.00	0.039	<b>0.04</b>	0.101	<b>0.11</b>	-0.01
124	5620	11a	Rear 15mm	Unfold	18.52	19.00	0.058	<b>0.06</b>	0.143	<b>0.16</b>	0.19
149	5745	11a	Front 15mm	/	18.89	19.00	<0.01	<b>&lt;0.01</b>	<0.01	<b>&lt;0.01</b>	/
149	5745	11a	Rear 15mm	/	18.89	19.00	0.043	<b>0.04</b>	0.109	<b>0.11</b>	0.19
149	5745	11a	Rear 15mm	Unfold	18.89	19.00	0.077	<b>0.08</b>	0.194	<b>0.20</b>	0.13

According to the KDB248227 D01, The reported SAR must be scaled to 100% transmission duty factor to determine compliance at the maximum tune-up tolerance limit. The scaled reported SAR is presented as below.



Picture 14.2-4 Duty factor plot

Table 14.2-8: SAR Values (WLAN5G - Body) – Scaled Reported SAR

Frequency		Ambient Temperature: 22.9 °C			Liquid Temperature: 22.5°C		
Ch.	MHz	Mode	Test Position	Actual duty factor	maximum duty factor	Reported SAR (1g)(W/kg)	Scaled reported SAR (1g)(W/kg)
60	5300	11a	Rear 15mm Unfold	100%	100%	<b>0.34</b>	<b>0.34</b>

### 14.3 SAR Evaluation for BT

**Table 14.3-1: SAR Values (BT – Head)**

Frequency		Test Position	Ambient Temperature: 22.9 °C		Liquid Temperature: 22.5 °C		Reported SAR(1g) (W/kg)	Power Drift (dB)
Ch.	MHz		Conducted Power (dBm)	Max. tune-up Power (dBm)	Measured SAR(10g) (W/kg)	Reported SAR(10g) (W/kg)		
0	2402	Left Cheek	7.85	8.5	<0.01	<b>&lt;0.01</b>	<0.01	/
0	2402	Left Tilt	7.85	8.5	<0.01	<b>&lt;0.01</b>	<0.01	/
0	2402	Right Cheek	7.85	8.5	<0.01	<b>&lt;0.01</b>	<0.01	/
0	2402	Right Tilt	7.85	8.5	<0.01	<b>&lt;0.01</b>	<0.01	/

**Table 14.3-2: SAR Values (BT – Body)**

Frequency		Test Position	Ambient Temperature: 22.9 °C		Liquid Temperature: 22.5 °C		Reported SAR(1g) (W/kg)	Power Drift (dB)
Ch.	MHz		Conducted Power (dBm)	Max. tune-up Power (dBm)	Measured SAR(10g) (W/kg)	Reported SAR(10g) (W/kg)		
0	2402	Front 15mm	7.85	8.5	<0.01	<b>&lt;0.01</b>	<0.01	/
0	2402	Rear 15mm	7.85	8.5	<0.01	<b>&lt;0.01</b>	<0.01	/
0	2402	Rear 15mm Unfold	7.85	8.5	<0.01	<b>&lt;0.01</b>	<0.01	/

## 15 SAR Measurement Variability

SAR measurement variability must be assessed for each frequency band, which is determined by the SAR probe calibration point and tissue-equivalent medium used for the device measurements. When both head and body tissue-equivalent media are required for SAR measurements in a frequency band, the variability measurement procedures should be applied to the tissue medium with the highest measured SAR, using the highest measured SAR configuration for that tissue-equivalent medium.

The following procedures are applied to determine if repeated measurements are required.

- 1) Repeated measurement is not required when the original highest measured SAR is  $< 0.80$  W/kg; steps 2) through 4) do not apply.
- 2) When the original highest measured SAR is  $\geq 0.80$  W/kg, repeat that measurement once.
- 3) Perform a second repeated measurement only if the ratio of largest to smallest SAR for the original and first repeated measurements is  $> 1.20$  or when the original or repeated measurement is  $\geq 1.45$  W/kg ( $\sim 10\%$  from the 1-g SAR limit).
- 4) Perform a third repeated measurement only if the original, first or second repeated measurement is  $\geq 1.5$  W/kg and the ratio of largest to smallest SAR for the original, first and second repeated measurements is  $> 1.20$

Band	Frequency		Mode	Test Position	Distance (mm)	Highest Measured SAR (W/kg)	First Repeated SAR (W/kg)	The Ratio	Second Repeated SAR (W/kg)
	Ch.	MHz							
GSM1900	512	1850.2	GPRS(4)	Rear	15mm	0.921	0.911	1.01	/
WCDMA1900	9538	1907.6	RMC	Rear	15mm	0.995	0.973	1.02	/



## 16 Measurement Uncertainty

### 16.1 Measurement Uncertainty for Normal SAR Tests (300MHz~3GHz)

No.	Error Description	Type	Uncertainty value	Probably Distribution	Div.	(Ci) 1g	(Ci) 10g	Std. Unc. (1g)	Std. Unc. (10g)	Degree of freedom
<b>Measurement system</b>										
1	Probe calibration	B	6.0	N	1	1	1	6.0	6.0	$\infty$
2	Isotropy	B	4.7	R	$\sqrt{3}$	0.7	0.7	1.9	1.9	$\infty$
3	Boundary effect	B	1.0	R	$\sqrt{3}$	1	1	0.6	0.6	$\infty$
4	Linearity	B	4.7	R	$\sqrt{3}$	1	1	2.7	2.7	$\infty$
5	Detection limit	B	1.0	N	1	1	1	0.6	0.6	$\infty$
6	Readout electronics	B	0.3	R	$\sqrt{3}$	1	1	0.3	0.3	$\infty$
7	Response time	B	0.8	R	$\sqrt{3}$	1	1	0.5	0.5	$\infty$
8	Integration time	B	2.6	R	$\sqrt{3}$	1	1	1.5	1.5	$\infty$
9	RF ambient conditions-noise	B	0	R	$\sqrt{3}$	1	1	0	0	$\infty$
10	RF ambient conditions-reflection	B	0	R	$\sqrt{3}$	1	1	0	0	$\infty$
11	Probe positioned mech. restrictions	B	0.4	R	$\sqrt{3}$	1	1	0.2	0.2	$\infty$
12	Probe positioning with respect to phantom shell	B	2.9	R	$\sqrt{3}$	1	1	1.7	1.7	$\infty$
13	Post-processing	B	1.0	R	$\sqrt{3}$	1	1	0.6	0.6	$\infty$
<b>Test sample related</b>										
14	Test sample positioning	A	3.3	N	1	1	1	3.3	3.3	71
15	Device holder uncertainty	A	3.4	N	1	1	1	3.4	3.4	5
16	Drift of output power	B	5.0	R	$\sqrt{3}$	1	1	2.9	2.9	$\infty$
<b>Phantom and set-up</b>										
17	Phantom uncertainty	B	4.0	R	$\sqrt{3}$	1	1	2.3	2.3	$\infty$
18	Liquid conductivity (target)	B	5.0	R	$\sqrt{3}$	0.64	0.43	1.8	1.2	$\infty$
19	Liquid conductivity (meas.)	A	2.06	N	1	0.64	0.43	1.32	0.89	43
20	Liquid permittivity (target)	B	5.0	R	$\sqrt{3}$	0.6	0.49	1.7	1.4	$\infty$
21	Liquid permittivity (meas.)	A	1.6	N	1	0.6	0.49	1.0	0.8	521

Combined standard uncertainty	$u_c' = \sqrt{\sum_{i=1}^{21} c_i^2 u_i^2}$						9.55	9.43	257
Expanded uncertainty (confidence interval of 95 %)	$u_e = 2u_c$						19.1	18.9	

**16.2 Measurement Uncertainty for Normal SAR Tests (3~6GHz)**

No.	Error Description	Type	Uncertainty value	Probably Distribution	Div.	(Ci) 1g	(Ci) 10g	Std. Unc. (1g)	Std. Unc. (10g)	Degree of freedom
<b>Measurement system</b>										
1	Probe calibration	B	6.55	N	1	1	1	6.55	6.55	$\infty$
2	Isotropy	B	4.7	R	$\sqrt{3}$	0.7	0.7	1.9	1.9	$\infty$
3	Boundary effect	B	2.0	R	$\sqrt{3}$	1	1	1.2	1.2	$\infty$
4	Linearity	B	4.7	R	$\sqrt{3}$	1	1	2.7	2.7	$\infty$
5	Detection limit	B	1.0	R	$\sqrt{3}$	1	1	0.6	0.6	$\infty$
6	Readout electronics	B	0.3	R	$\sqrt{3}$	1	1	0.3	0.3	$\infty$
7	Response time	B	0.8	R	$\sqrt{3}$	1	1	0.5	0.5	$\infty$
8	Integration time	B	2.6	R	$\sqrt{3}$	1	1	1.5	1.5	$\infty$
9	RF ambient conditions-noise	B	0	R	$\sqrt{3}$	1	1	0	0	$\infty$
10	RFambient conditions-reflection	B	0	R	$\sqrt{3}$	1	1	0	0	$\infty$
11	Probe positioned mech. restrictions	B	0.8	R	$\sqrt{3}$	1	1	0.5	0.5	$\infty$
12	Probe positioning with respect to phantom shell	B	6.7	R	$\sqrt{3}$	1	1	3.9	3.9	$\infty$
13	Post-processing	B	4.0	R	$\sqrt{3}$	1	1	2.3	2.3	$\infty$
<b>Test sample related</b>										
14	Test sample positioning	A	3.3	N	1	1	1	3.3	3.3	71
15	Device holder uncertainty	A	3.4	N	1	1	1	3.4	3.4	5
16	Drift of output power	B	5.0	R	$\sqrt{3}$	1	1	2.9	2.9	$\infty$
<b>Phantom and set-up</b>										
17	Phantom uncertainty	B	4.0	R	$\sqrt{3}$	1	1	2.3	2.3	$\infty$
18	Liquid conductivity (target)	B	5.0	R	$\sqrt{3}$	0.64	0.43	1.8	1.2	$\infty$
19	Liquid conductivity (meas.)	A	2.06	N	1	0.64	0.43	1.32	0.89	43
20	Liquid permittivity (target)	B	5.0	R	$\sqrt{3}$	0.6	0.49	1.7	1.4	$\infty$

21	Liquid permittivity (meas.)	A	1.6	N	1	0.6	0.49	1.0	0.8	521
Combined standard uncertainty		$u_c = \sqrt{\sum_{i=1}^{21} c_i^2 u_i^2}$						10.7	10.6	257
Expanded uncertainty (confidence interval of 95 %)		$u_e = 2u_c$						21.4	21.1	

### 16.3 Measurement Uncertainty for Fast SAR Tests (300MHz~3GHz)

No.	Error Description	Type	Uncertainty value	Probably Distribution	Div.	(Ci) 1g	(Ci) 10g	Std. Unc. (1g)	Std. Unc. (10g)	Degree of freedom
<b>Measurement system</b>										
1	Probe calibration	B	6.0	N	1	1	1	6.0	6.0	∞
2	Isotropy	B	4.7	R	$\sqrt{3}$	0.7	0.7	1.9	1.9	∞
3	Boundary effect	B	1.0	R	$\sqrt{3}$	1	1	0.6	0.6	∞
4	Linearity	B	4.7	R	$\sqrt{3}$	1	1	2.7	2.7	∞
5	Detection limit	B	1.0	R	$\sqrt{3}$	1	1	0.6	0.6	∞
6	Readout electronics	B	0.3	R	$\sqrt{3}$	1	1	0.3	0.3	∞
7	Response time	B	0.8	R	$\sqrt{3}$	1	1	0.5	0.5	∞
8	Integration time	B	2.6	R	$\sqrt{3}$	1	1	1.5	1.5	∞
9	RF ambient conditions-noise	B	0	R	$\sqrt{3}$	1	1	0	0	∞
10	RFambient conditions-reflection	B	0	R	$\sqrt{3}$	1	1	0	0	∞
11	Probe positioned mech. Restrictions	B	0.4	R	$\sqrt{3}$	1	1	0.2	0.2	∞
12	Probe positioning with respect to phantom shell	B	2.9	R	$\sqrt{3}$	1	1	1.7	1.7	∞
13	Post-processing	B	1.0	R	$\sqrt{3}$	1	1	0.6	0.6	∞
14	Fast SAR z-Approximation	B	7.0	R	$\sqrt{3}$	1	1	4.0	4.0	∞
<b>Test sample related</b>										
15	Test sample positioning	A	3.3	N	1	1	1	3.3	3.3	71
16	Device holder uncertainty	A	3.4	N	1	1	1	3.4	3.4	5
17	Drift of output power	B	5.0	R	$\sqrt{3}$	1	1	2.9	2.9	∞
<b>Phantom and set-up</b>										
18	Phantom uncertainty	B	4.0	R	$\sqrt{3}$	1	1	2.3	2.3	∞
19	Liquid conductivity (target)	B	5.0	R	$\sqrt{3}$	0.64	0.43	1.8	1.2	∞

20	Liquid conductivity (meas.)	A	2.06	N	1	0.64	0.43	1.32	0.89	43
21	Liquid permittivity (target)	B	5.0	R	$\sqrt{3}$	0.6	0.49	1.7	1.4	$\infty$
22	Liquid permittivity (meas.)	A	1.6	N	1	0.6	0.49	1.0	0.8	521
Combined standard uncertainty		$u_c = \sqrt{\sum_{i=1}^{22} c_i^2 u_i^2}$						10.4	10.3	257
Expanded uncertainty (confidence interval of 95 %)		$u_e = 2u_c$						20.8	20.6	

#### 16.4 Measurement Uncertainty for Fast SAR Tests (3~6GHz)

No.	Error Description	Type	Uncertainty value	Probably Distribution	Div.	(Ci) 1g	(Ci) 10g	Std. Unc. (1g)	Std. Unc. (10g)	Degree of freedom
<b>Measurement system</b>										
1	Probe calibration	B	6.55	N	1	1	1	6.55	6.55	$\infty$
2	Isotropy	B	4.7	R	$\sqrt{3}$	0.7	0.7	1.9	1.9	$\infty$
3	Boundary effect	B	2.0	R	$\sqrt{3}$	1	1	1.2	1.2	$\infty$
4	Linearity	B	4.7	R	$\sqrt{3}$	1	1	2.7	2.7	$\infty$
5	Detection limit	B	1.0	R	$\sqrt{3}$	1	1	0.6	0.6	$\infty$
6	Readout electronics	B	0.3	R	$\sqrt{3}$	1	1	0.3	0.3	$\infty$
7	Response time	B	0.8	R	$\sqrt{3}$	1	1	0.5	0.5	$\infty$
8	Integration time	B	2.6	R	$\sqrt{3}$	1	1	1.5	1.5	$\infty$
9	RF ambient conditions-noise	B	0	R	$\sqrt{3}$	1	1	0	0	$\infty$
10	RFambient conditions-reflection	B	0	R	$\sqrt{3}$	1	1	0	0	$\infty$
11	Probe positioned mech. Restrictions	B	0.8	R	$\sqrt{3}$	1	1	0.5	0.5	$\infty$
12	Probe positioning with respect to phantom shell	B	6.7	R	$\sqrt{3}$	1	1	3.9	3.9	$\infty$
13	Post-processing	B	1.0	R	$\sqrt{3}$	1	1	0.6	0.6	$\infty$
14	Fast SAR z-Approximation	B	14.0	R	$\sqrt{3}$	1	1	8.1	8.1	$\infty$
<b>Test sample related</b>										
15	Test sample positioning	A	3.3	N	1	1	1	3.3	3.3	71
16	Device holder uncertainty	A	3.4	N	1	1	1	3.4	3.4	5

17	Drift of output power	B	5.0	R	$\sqrt{3}$	1	1	2.9	2.9	$\infty$
<b>Phantom and set-up</b>										
18	Phantom uncertainty	B	4.0	R	$\sqrt{3}$	1	1	2.3	2.3	$\infty$
19	Liquid conductivity (target)	B	5.0	R	$\sqrt{3}$	0.64	0.43	1.8	1.2	$\infty$
20	Liquid conductivity (meas.)	A	2.06	N	1	0.64	0.43	1.32	0.89	43
21	Liquid permittivity (target)	B	5.0	R	$\sqrt{3}$	0.6	0.49	1.7	1.4	$\infty$
22	Liquid permittivity (meas.)	A	1.6	N	1	0.6	0.49	1.0	0.8	521
Combined standard uncertainty		$u_c = \sqrt{\sum_{i=1}^{22} c_i^2 u_i^2}$						13.5	13.4	257
Expanded uncertainty (confidence interval of 95 %)		$u_e = 2u_c$						27.0	26.8	

## 17 MAIN TEST INSTRUMENTS

**Table 17.1: List of Main Instruments**

No.	Name	Type	Serial Number	Calibration Date	Valid Period
01	Network analyzer	N5239A	MY55491241	May 31, 2021	One year
02	Power meter	NRP2	106276	May 11, 2021	One year
03	Power sensor	NRP6A	101369		
04	Signal Generator	E4438C	MY49070393	May 14, 2021	One Year
05	Amplifier	60S1G4	0331848	No Calibration Requested	
06	BTS	CMW500	166370	June 25, 2021	One year
07	E-field Probe	SPEAG EX3DV4	7548	June 25, 2021	One year
08	DAE	SPEAG DAE4	1331	September 1, 2021	One year
09	Dipole Validation Kit	SPEAG D750V2	1017	July 12,,2021	One year
10	Dipole Validation Kit	SPEAG D835V2	4d069	July 12,,2021	One year
11	Dipole Validation Kit	SPEAG D1750V2	1003	July 12,,2021	One year
12	Dipole Validation Kit	SPEAG D1900V2	5d101	July 15,2021	One year
13	Dipole Validation Kit	SPEAG D2450V2	853	July 26,2021	One year
14	Dipole Validation Kit	SPEAG D2600V2	1012	July 26,2021	One year
15	Dipole Validation Kit	SPEAG D5GHzV2	1060	June 21,2021	One year

\*\*\*END OF REPORT BODY\*\*\*

## ANNEX A Graph Results

### GSM850 Head

Date: 4/16/2022

Electronics: DAE4 Sn1331

Medium: head 835 MHz

Medium parameters used:  $f = 848.8$  MHz;  $\sigma = 0.966$  S/m;  $\epsilon_r = 42.938$ ;  $\rho = 1000$  kg/m<sup>3</sup>

Ambient Temperature: 22.9°C      Liquid Temperature: 22.5°C

Communication System: GSM850 848.8 MHz Duty Cycle: 1:8.30042

Probe: EX3DV4 - SN7548 ConvF(10.36, 10.36, 10.36)

**Area Scan (81x141x1):** Interpolated grid: dx=1.500 mm, dy=1.500 mm

Maximum value of SAR (interpolated) = 0.538 W/kg

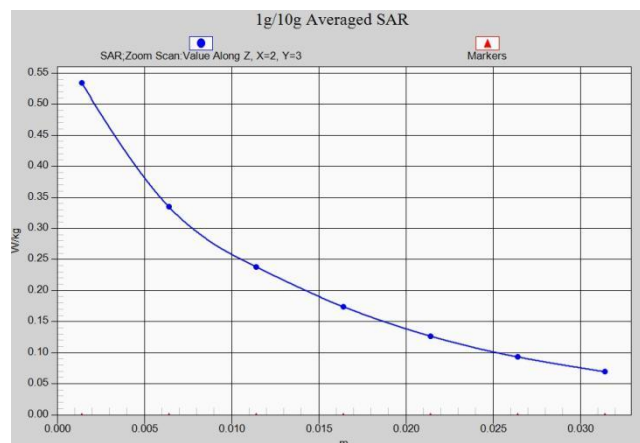
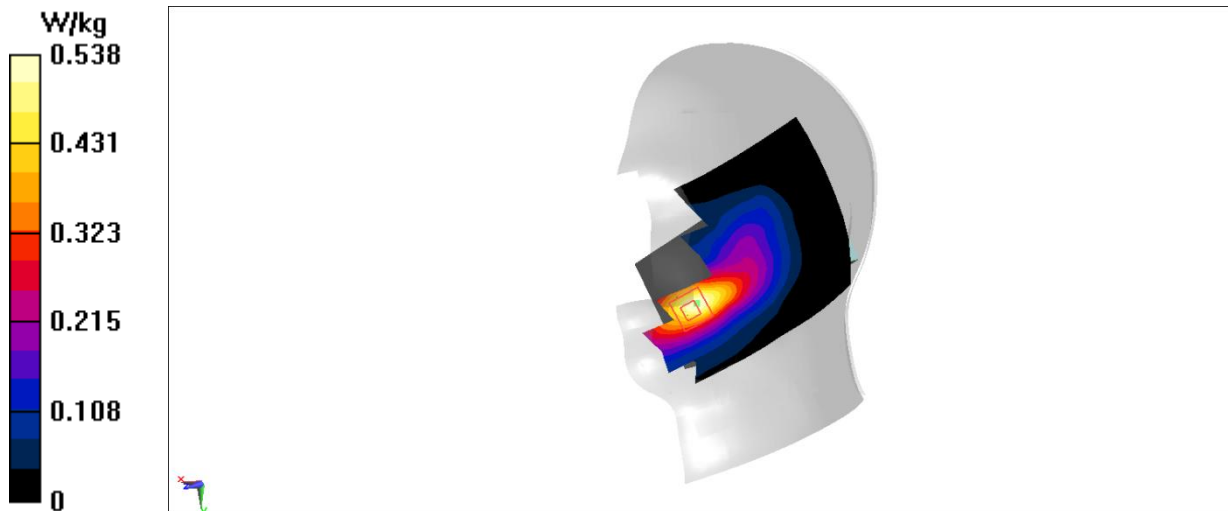
**Zoom Scan (5x5x7)/Cube 0:** Measurement grid: dx=8mm, dy=8mm, dz=5mm

Reference Value = 3.761 V/m; Power Drift = -0.08 dB

Peak SAR (extrapolated) = 0.642 W/kg

**SAR(1 g) = 0.382 W/kg; SAR(10 g) = 0.250 W/kg**

Maximum value of SAR (measured) = 0.534 W/kg



**GSM850 Body**

Date: 4/16/2022

Electronics: DAE4 Sn1331

Medium: head 835 MHz

Medium parameters used:  $f = 825 \text{ MHz}$ ;  $\sigma = 0.954 \text{ S/m}$ ;  $\epsilon_r = 42.947$ ;  $\rho = 1000 \text{ kg/m}^3$

Ambient Temperature:  $22.9^\circ\text{C}$       Liquid Temperature:  $22.5^\circ\text{C}$

Communication System: GSM850 4TX 824.2 MHz Duty Cycle: 1:1.99986

Probe: EX3DV4 - SN7548 ConvF(10.36, 10.36, 10.36)

**Area Scan (61x101x1):** Interpolated grid:  $dx=1.500 \text{ mm}$ ,  $dy=1.500 \text{ mm}$

Maximum value of SAR (interpolated) =  $0.876 \text{ W/kg}$

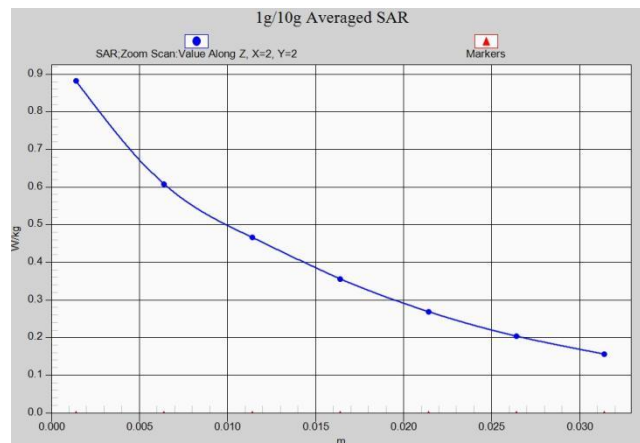
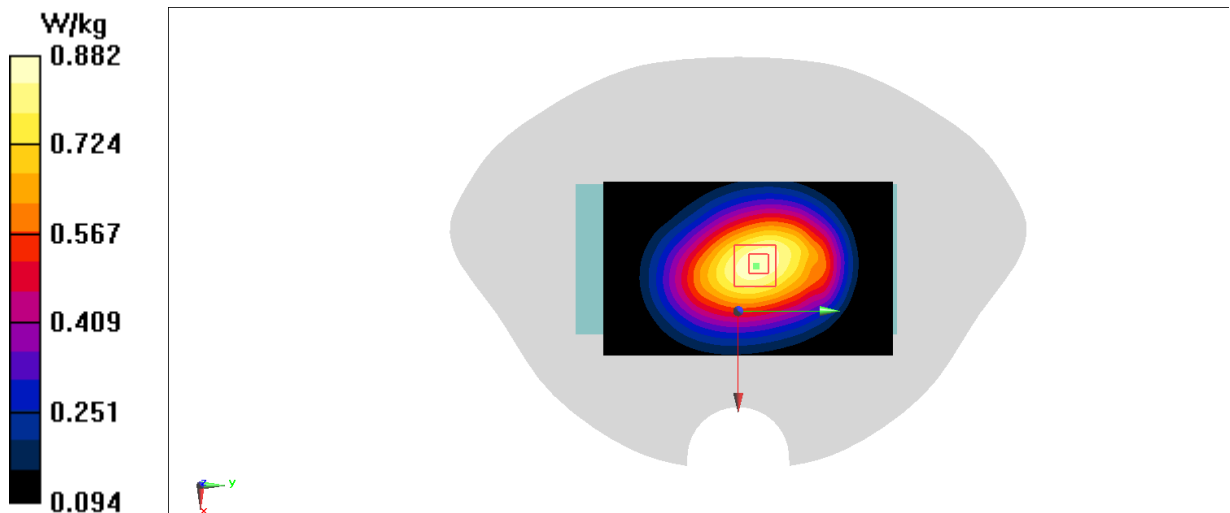
**Zoom Scan (5x5x7)/Cube 0:** Measurement grid:  $dx=8\text{mm}$ ,  $dy=8\text{mm}$ ,  $dz=5\text{mm}$

Reference Value =  $26.64 \text{ V/m}$ ; Power Drift =  $-0.07 \text{ dB}$

Peak SAR (extrapolated) =  $1.00 \text{ W/kg}$

**SAR(1 g) =  $0.684 \text{ W/kg}$ ; SAR(10 g) =  $0.496 \text{ W/kg}$**

Maximum value of SAR (measured) =  $0.882 \text{ W/kg}$





**PCS1900 Head**

Date: 4/19/2022

Electronics: DAE4 Sn1331

Medium: head 1900 MHz

Medium parameters used:  $f = 1850.2$  MHz;  $\sigma = 1.447$  S/m;  $\epsilon_r = 40.868$ ;  $\rho = 1000$  kg/m<sup>3</sup>

Ambient Temperature: 22.9°C      Liquid Temperature: 22.5°C

Communication System: GSM1900 (PCS) 1850.2 MHz Duty Cycle: 1:8.30042

Probe: EX3DV4 - SN7548 ConvF(7.88, 7.88, 7.88)

**Area Scan (81x141x1):** Interpolated grid: dx=1.500 mm, dy=1.500 mm

Maximum value of SAR (interpolated) = 0.349 W/kg

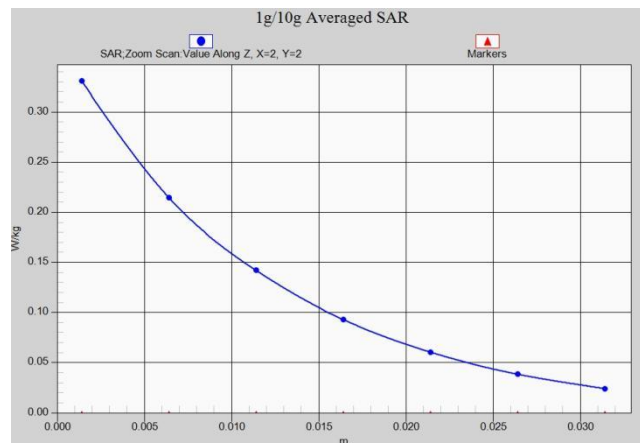
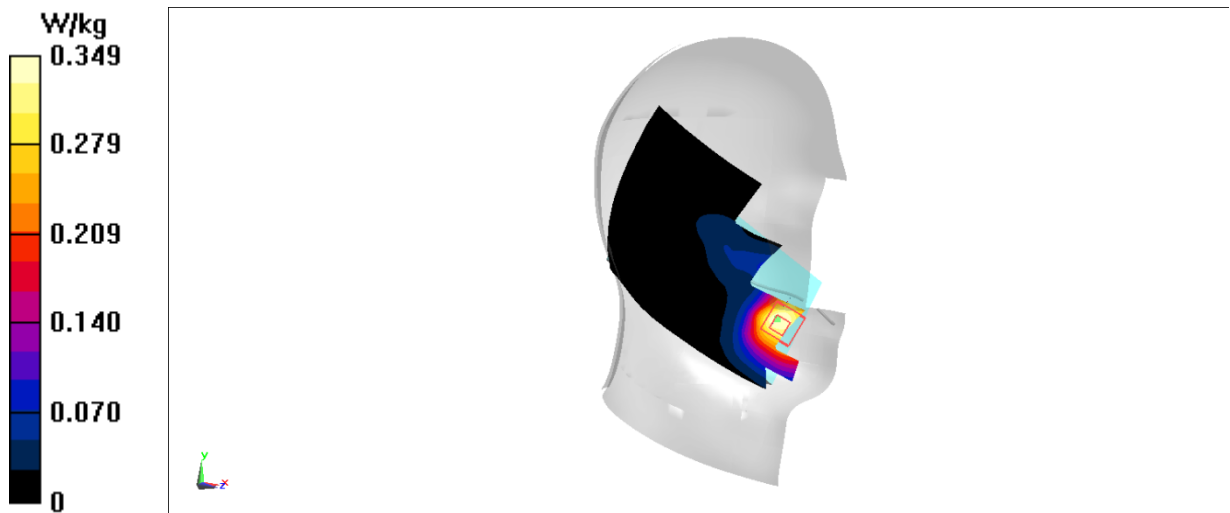
**Zoom Scan (5x5x7)/Cube 0:** Measurement grid: dx=8mm, dy=8mm, dz=5mm

Reference Value = 2.043 V/m; Power Drift = -0.15 dB

Peak SAR (extrapolated) = 0.377 W/kg

**SAR(1 g) = 0.250 W/kg; SAR(10 g) = 0.161 W/kg**

Maximum value of SAR (measured) = 0.331 W/kg



**PCS1900\_Body**

Date: 4/19/2022

Electronics: DAE4 Sn1331

Medium: head 1900 MHz

Medium parameters used:  $f = 1850.2$  MHz;  $\sigma = 1.447$  S/m;  $\epsilon_r = 40.868$ ;  $\rho = 1000$  kg/m<sup>3</sup>

Ambient Temperature: 22.9°C      Liquid Temperature: 22.5°C

Communication System: GSM1900 4TX 1850.2 MHz Duty Cycle: 1:1.99986

Probe: EX3DV4 - SN7548 ConvF(7.88, 7.88, 7.88)

**Area Scan (61x101x1):** Interpolated grid:  $dx=1.500$  mm,  $dy=1.500$  mm

Maximum value of SAR (interpolated) = 1.34 W/kg

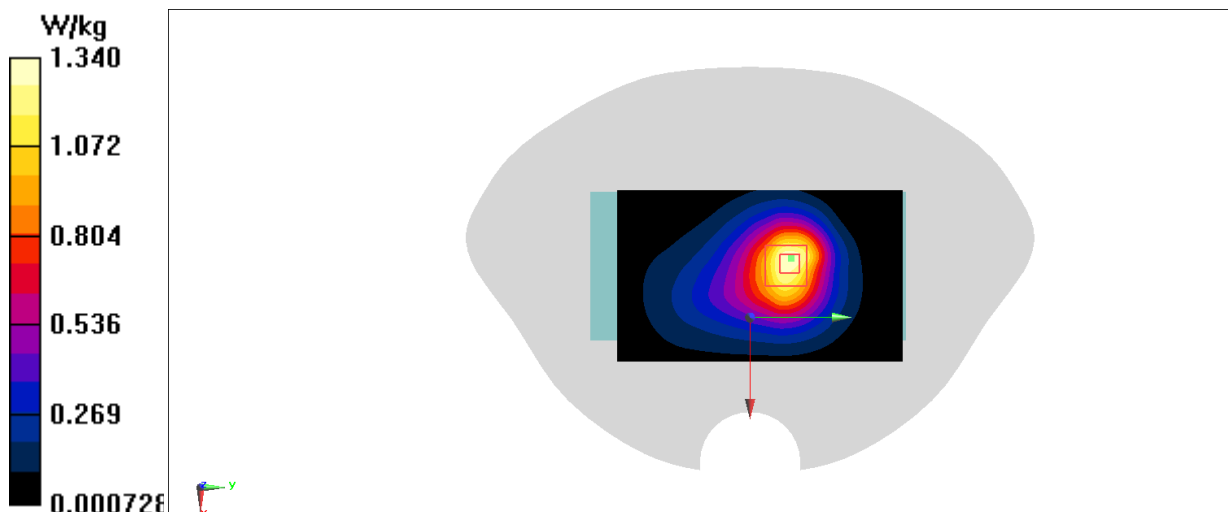
**Zoom Scan (5x5x7)/Cube 0:** Measurement grid:  $dx=8$ mm,  $dy=8$ mm,  $dz=5$ mm

Reference Value = 18.99 V/m; Power Drift = 0.06 dB

Peak SAR (extrapolated) = 1.58 W/kg

**SAR(1 g) = 0.921 W/kg; SAR(10 g) = 0.548 W/kg**

Maximum value of SAR (measured) = 1.31 W/kg



**WCDMA1900-BII Head**

Date: 4/19/2022

Electronics: DAE4 Sn1331

Medium: head 1900 MHz

Medium parameters used:  $f = 1880$  MHz;  $\sigma = 1.466$  S/m;  $\epsilon_r = 40.86$ ;  $\rho = 1000$  kg/m<sup>3</sup>

Ambient Temperature: 22.9°C      Liquid Temperature: 22.5°C

Communication System: WCDMA1900(B2) 1880 MHz Duty Cycle: 1:1

Probe: EX3DV4 - SN7548 ConvF(7.88, 7.88, 7.88)

**Area Scan (81x141x1):** Interpolated grid: dx=1.500 mm, dy=1.500 mm

Maximum value of SAR (interpolated) = 0.679 W/kg

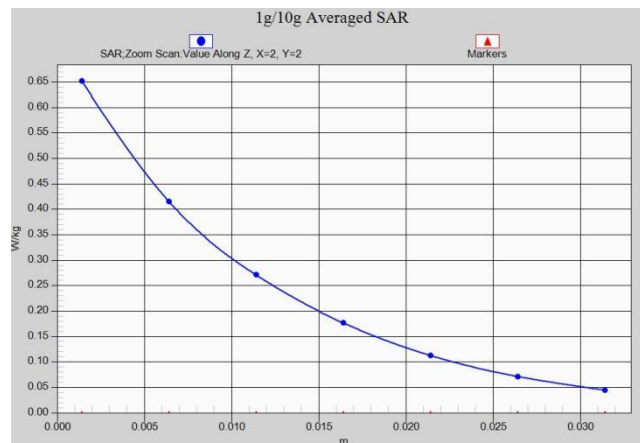
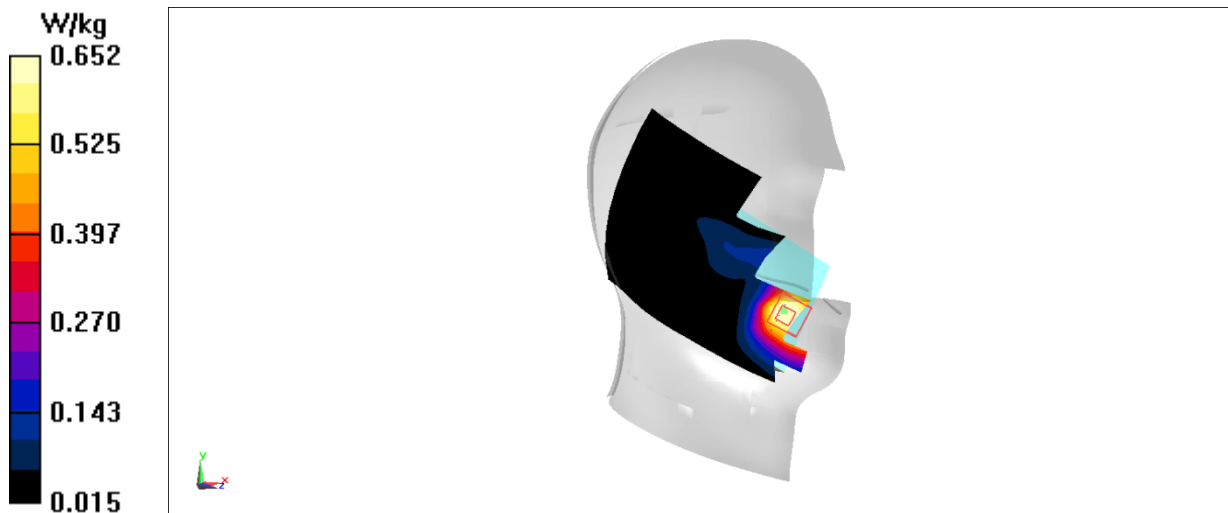
**Zoom Scan (5x5x7)/Cube 0:** Measurement grid: dx=8mm, dy=8mm, dz=5mm

Reference Value = 1.540 V/m; Power Drift = 0.08 dB

Peak SAR (extrapolated) = 0.741 W/kg

**SAR(1 g) = 0.482 W/kg; SAR(10 g) = 0.306 W/kg**

Maximum value of SAR (measured) = 0.652 W/kg



**WCDMA1900-BII Body**

Date: 4/19/2022

Electronics: DAE4 Sn1331

Medium: head 1900 MHz

Medium parameters used:  $f = 1907.6$  MHz;  $\sigma = 1.483$  S/m;  $\epsilon_r = 40.799$ ;  $\rho = 1000$  kg/m<sup>3</sup>

Ambient Temperature: 22.9°C      Liquid Temperature: 22.5°C

Communication System: WCDMA1900(B2) 1907.6 MHz Duty Cycle: 1:1

Probe: EX3DV4 - SN7548 ConvF(7.88, 7.88, 7.88)

**Area Scan (61x101x1):** Interpolated grid: dx=1.500 mm, dy=1.500 mm

Maximum value of SAR (interpolated) = 1.39 W/kg

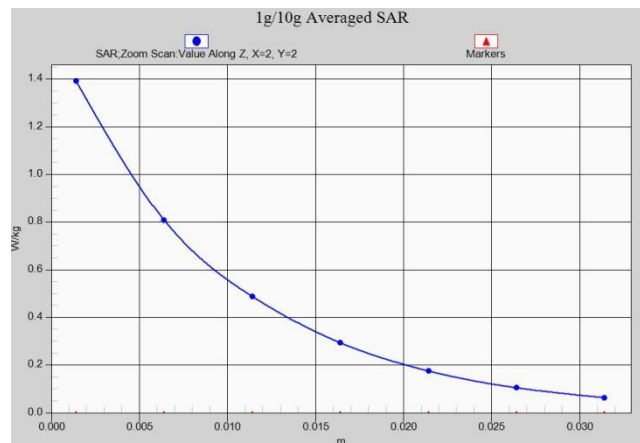
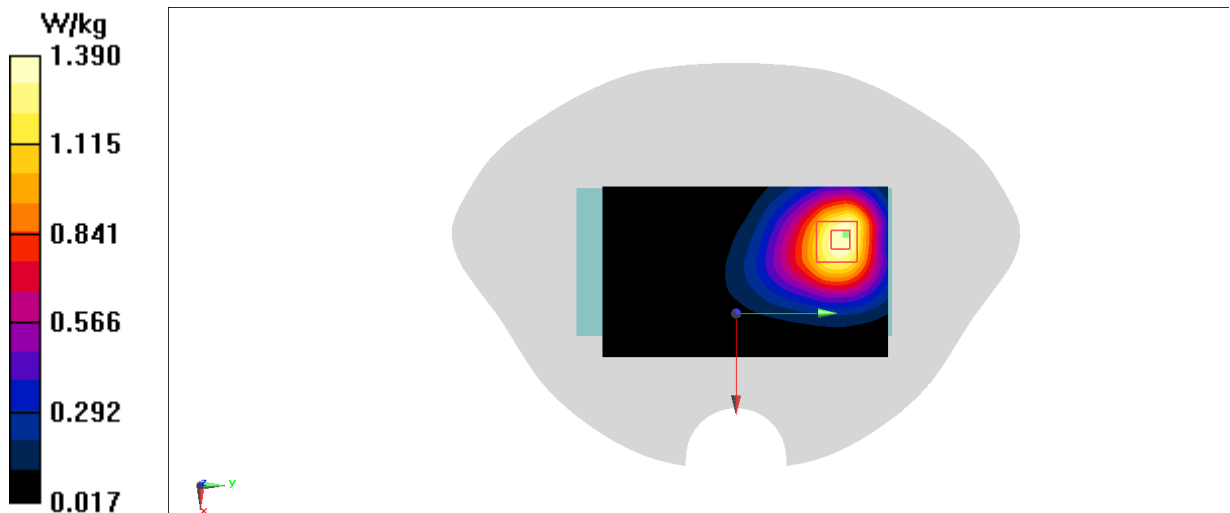
**Zoom Scan (5x5x7)/Cube 0:** Measurement grid: dx=8mm, dy=8mm, dz=5mm

Reference Value = 8.557 V/m; Power Drift = 0.03 dB

Peak SAR (extrapolated) = 1.69 W/kg

**SAR(1 g) = 0.995 W/kg; SAR(10 g) = 0.598 W/kg**

Maximum value of SAR (measured) = 1.39 W/kg



**WCDMA850-BV Head**

Date: 4/16/2022

Electronics: DAE4 Sn1331

Medium: head 835 MHz

Medium parameters used:  $f = 846.6$  MHz;  $\sigma = 0.964$  S/m;  $\epsilon_r = 42.944$ ;  $\rho = 1000$  kg/m<sup>3</sup>

Ambient Temperature: 22.9°C      Liquid Temperature: 22.5°C

Communication System: WCDMA850(B5) 846.6 MHz Duty Cycle: 1:1

Probe: EX3DV4 - SN7548 ConvF(10.36, 10.36, 10.36)

**Area Scan (81x141x1):** Interpolated grid: dx=1.500 mm, dy=1.500 mm

Maximum value of SAR (interpolated) = 0.718 W/kg

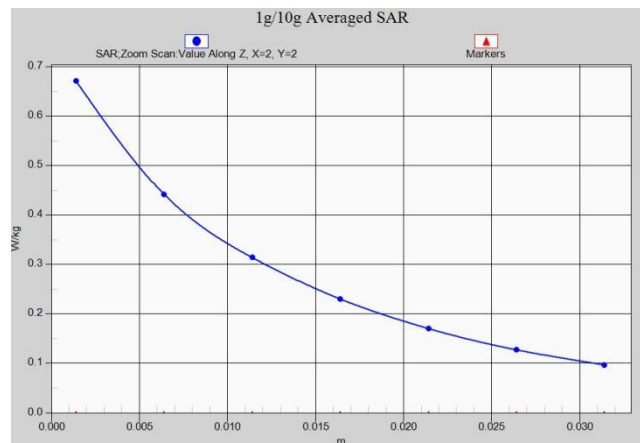
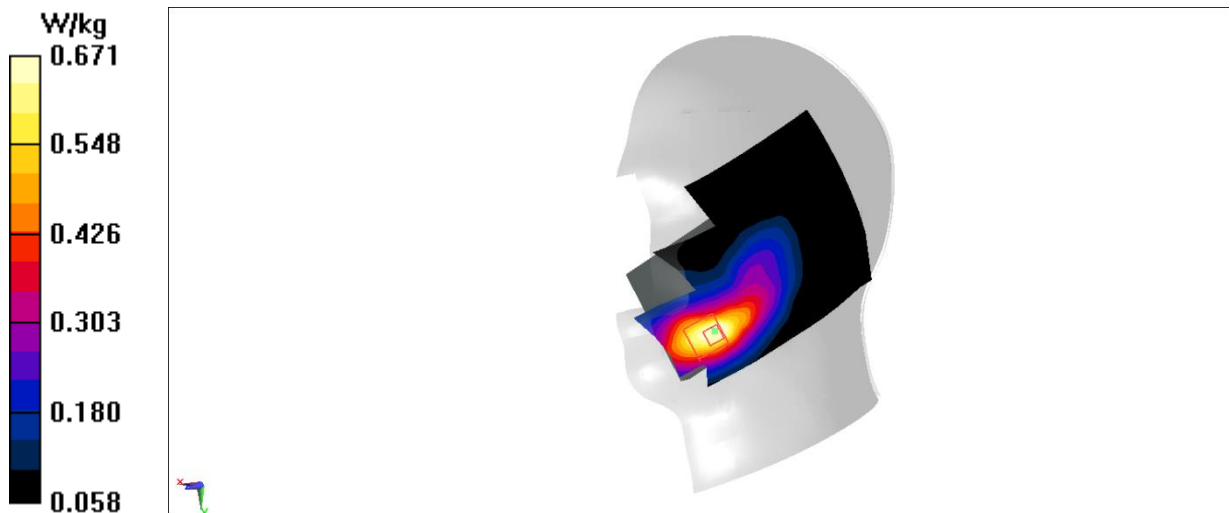
**Zoom Scan (5x5x7)/Cube 0:** Measurement grid: dx=8mm, dy=8mm, dz=5mm

Reference Value = 5.381 V/m; Power Drift = -0.06 dB

Peak SAR (extrapolated) = 0.820 W/kg

**SAR(1 g) = 0.507 W/kg; SAR(10 g) = 0.340 W/kg**

Maximum value of SAR (measured) = 0.671 W/kg



**WCDMA850-BV Body**

Date: 4/16/2022

Electronics: DAE4 Sn1331

Medium: head 835 MHz

Medium parameters used:  $f = 846.6$  MHz;  $\sigma = 0.964$  S/m;  $\epsilon_r = 42.944$ ;  $\rho = 1000$  kg/m<sup>3</sup>

Ambient Temperature: 22.9°C      Liquid Temperature: 22.5°C

Communication System: WCDMA850(B5) 846.6 MHz Duty Cycle: 1:1

Probe: EX3DV4 - SN7548 ConvF(10.36, 10.36, 10.36)

**Area Scan (61x101x1):** Interpolated grid: dx=1.500 mm, dy=1.500 mm

Maximum value of SAR (interpolated) = 0.957 W/kg

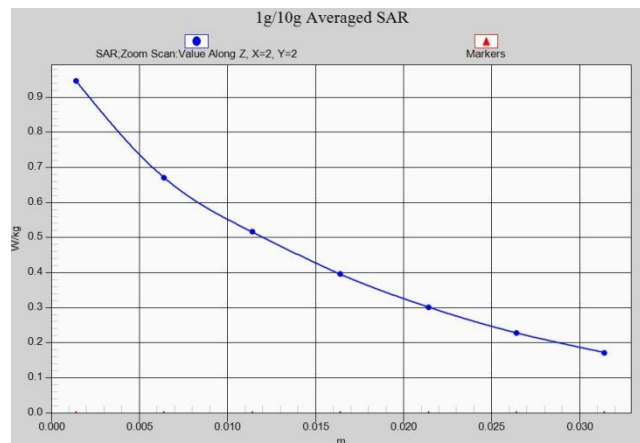
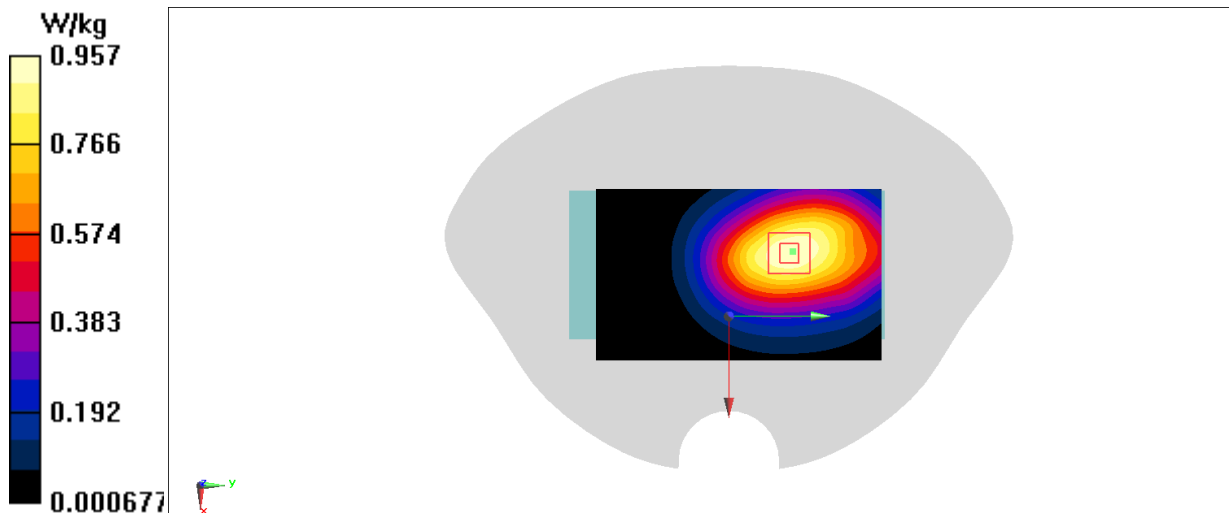
**Zoom Scan (5x5x7)/Cube 0:** Measurement grid: dx=8mm, dy=8mm, dz=5mm

Reference Value = 18.98 V/m; Power Drift = 0.09 dB

Peak SAR (extrapolated) = 1.07 W/kg

**SAR(1 g) = 0.752 W/kg; SAR(10 g) = 0.547 W/kg**

Maximum value of SAR (measured) = 0.947 W/kg



**LTE B2 Head**

Date: 4/19/2022

Electronics: DAE4 Sn1331

Medium: head 1900 MHz

Medium parameters used:  $f = 1900$  MHz;  $\sigma = 1.496$  S/m;  $\epsilon_r = 42.037$ ;  $\rho = 1000$  kg/m<sup>3</sup>

Ambient Temperature: 22.9°C      Liquid Temperature: 22.5°C

Communication System: LTE Band2 1900 MHz Duty Cycle: 1:1

Probe: EX3DV4 - SN7548 ConvF(7.88, 7.88, 7.88)

**Area Scan (101x171x1):** Interpolated grid: dx=1.200 mm, dy=1.200 mm

Maximum value of SAR (interpolated) = 0.643 W/kg

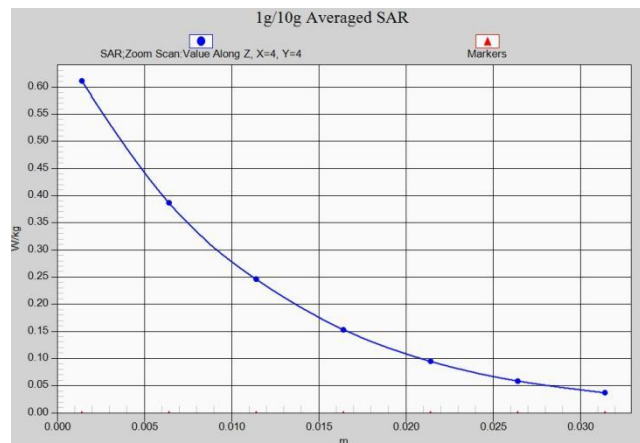
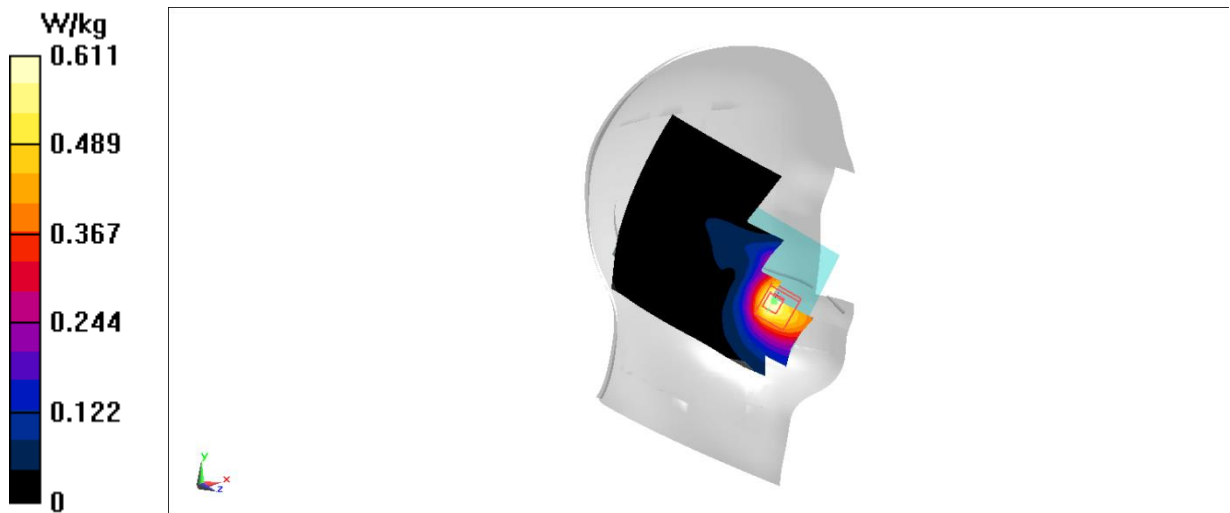
**Zoom Scan (7x8x7)/Cube 0:** Measurement grid: dx=5mm, dy=5mm, dz=5mm

Reference Value = 2.233 V/m; Power Drift = -0.20 dB

Peak SAR (extrapolated) = 0.695 W/kg

**SAR(1 g) = 0.442 W/kg; SAR(10 g) = 0.273 W/kg**

Maximum value of SAR (measured) = 0.611 W/kg



**LTE B2 Body**

Date: 4/19/2022

Electronics: DAE4 Sn1331

Medium: head 1900 MHz

Medium parameters used:  $f = 1900$  MHz;  $\sigma = 1.479$  S/m;  $\epsilon_r = 40.816$ ;  $\rho = 1000$  kg/m<sup>3</sup>

Ambient Temperature: 22.9°C      Liquid Temperature: 22.5°C

Communication System: LTE Band2 1900 MHz Duty Cycle: 1:1

Probe: EX3DV4 - SN7548 ConvF(7.88, 7.88, 7.88)

**Area Scan (81x131x1):** Interpolated grid: dx=1.200 mm, dy=1.200 mm

Maximum value of SAR (interpolated) = 1.07 W/kg

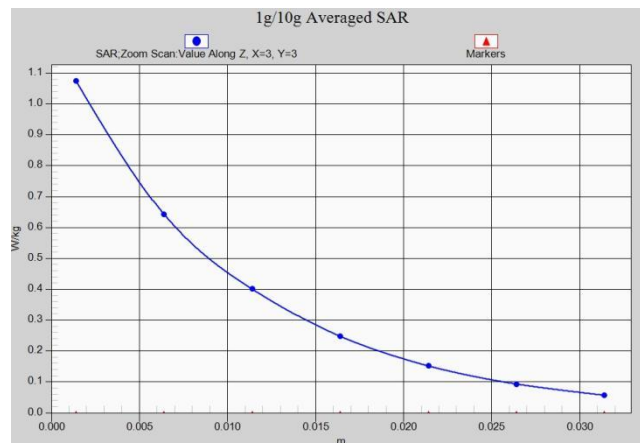
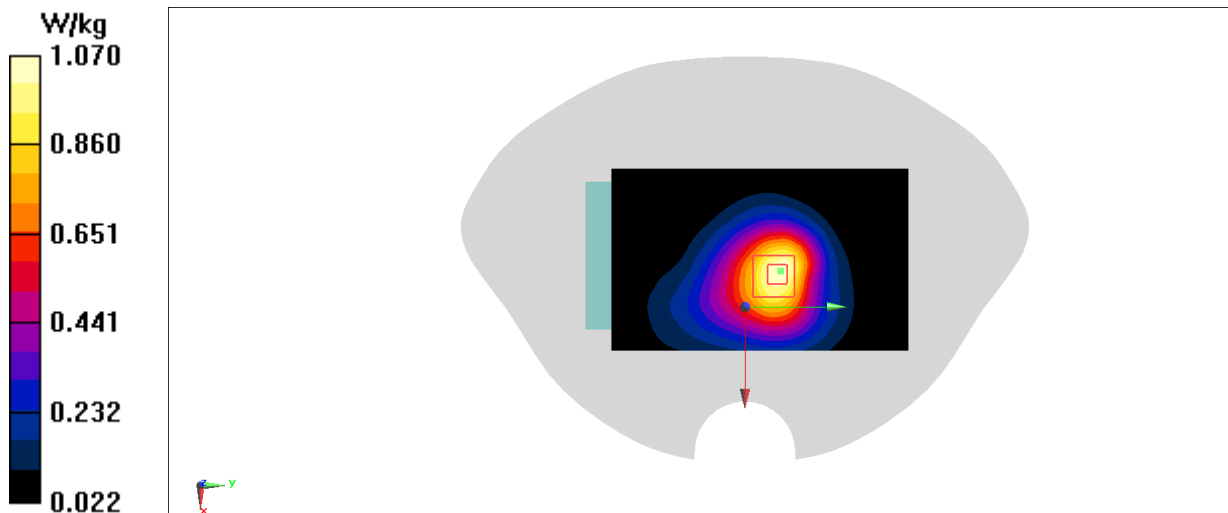
**Zoom Scan (7x7x7)/Cube 0:** Measurement grid: dx=5mm, dy=5mm, dz=5mm

Reference Value = 19.45 V/m; Power Drift = 0.19 dB

Peak SAR (extrapolated) = 1.26 W/kg

**SAR(1 g) = 0.763 W/kg; SAR(10 g) = 0.463 W/kg**

Maximum value of SAR (measured) = 1.07 W/kg





**LTE B5 Head**

Date: 4/16/2022

Electronics: DAE4 Sn1331

Medium: head 835 MHz

Medium parameters used:  $f = 844 \text{ MHz}$ ;  $\sigma = 0.963 \text{ S/m}$ ;  $\epsilon_r = 42.949$ ;  $\rho = 1000 \text{ kg/m}^3$

Ambient Temperature:  $22.9^\circ\text{C}$       Liquid Temperature:  $22.5^\circ\text{C}$

Communication System: LTE Band5 844 MHz Duty Cycle: 1:1

Probe: EX3DV4 - SN7548 ConvF(10.36, 10.36, 10.36)

**Area Scan (81x141x1):** Interpolated grid:  $dx=1.500 \text{ mm}$ ,  $dy=1.500 \text{ mm}$

Maximum value of SAR (interpolated) =  $0.778 \text{ W/kg}$

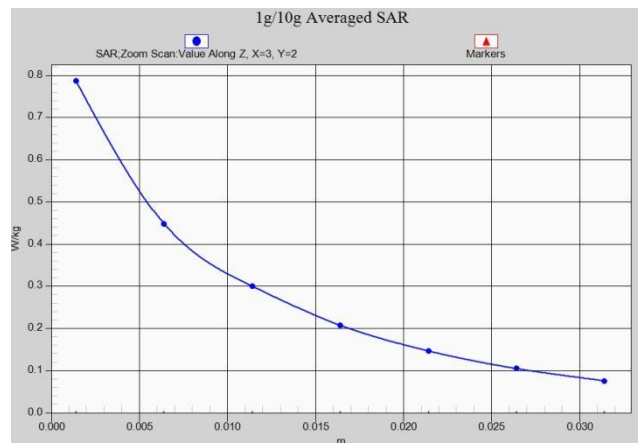
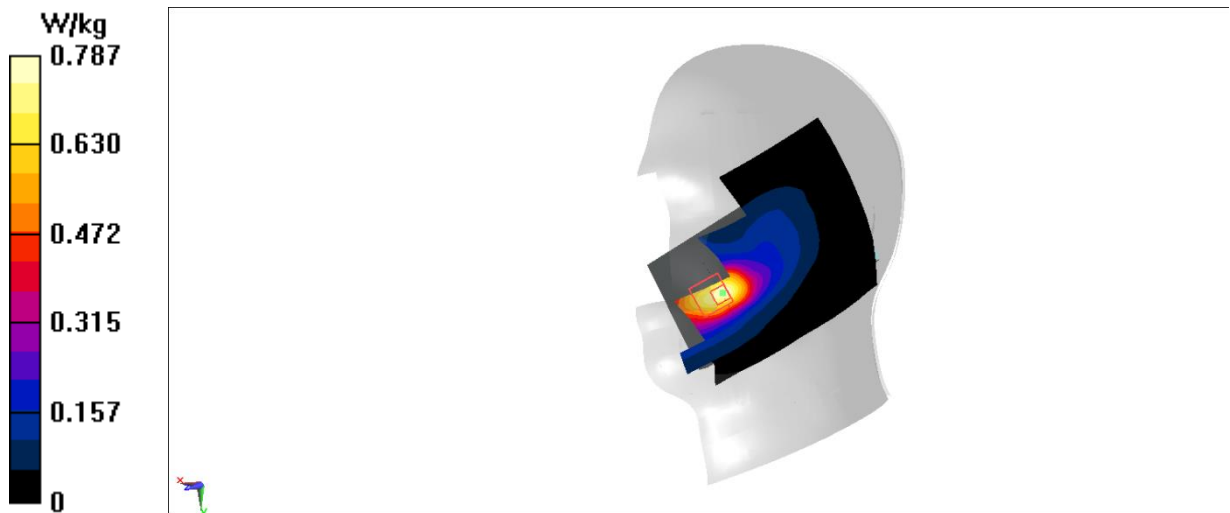
**Zoom Scan (6x6x7)/Cube 0:** Measurement grid:  $dx=8\text{mm}$ ,  $dy=8\text{mm}$ ,  $dz=5\text{mm}$

Reference Value =  $5.156 \text{ V/m}$ ; Power Drift =  $-0.10 \text{ dB}$

Peak SAR (extrapolated) =  $0.969 \text{ W/kg}$

**SAR(1 g) =  $0.536 \text{ W/kg}$ ; SAR(10 g) =  $0.341 \text{ W/kg}$**

Maximum value of SAR (measured) =  $0.787 \text{ W/kg}$



**LTE B5 Body**

Date: 4/16/2022

Electronics: DAE4 Sn1331

Medium: head 835 MHz

Medium parameters used:  $f = 844 \text{ MHz}$ ;  $\sigma = 0.963 \text{ S/m}$ ;  $\epsilon_r = 42.949$ ;  $\rho = 1000 \text{ kg/m}^3$

Ambient Temperature:  $22.9^\circ\text{C}$       Liquid Temperature:  $22.5^\circ\text{C}$

Communication System: LTE Band5 844 MHz Duty Cycle: 1:1

Probe: EX3DV4 - SN7548 ConvF(10.36, 10.36, 10.36)

**Area Scan (61x101x1):** Interpolated grid:  $dx=1.500 \text{ mm}$ ,  $dy=1.500 \text{ mm}$

Maximum value of SAR (interpolated) =  $0.789 \text{ W/kg}$

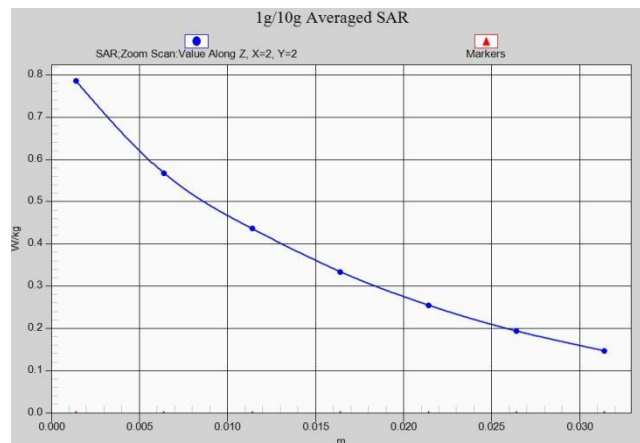
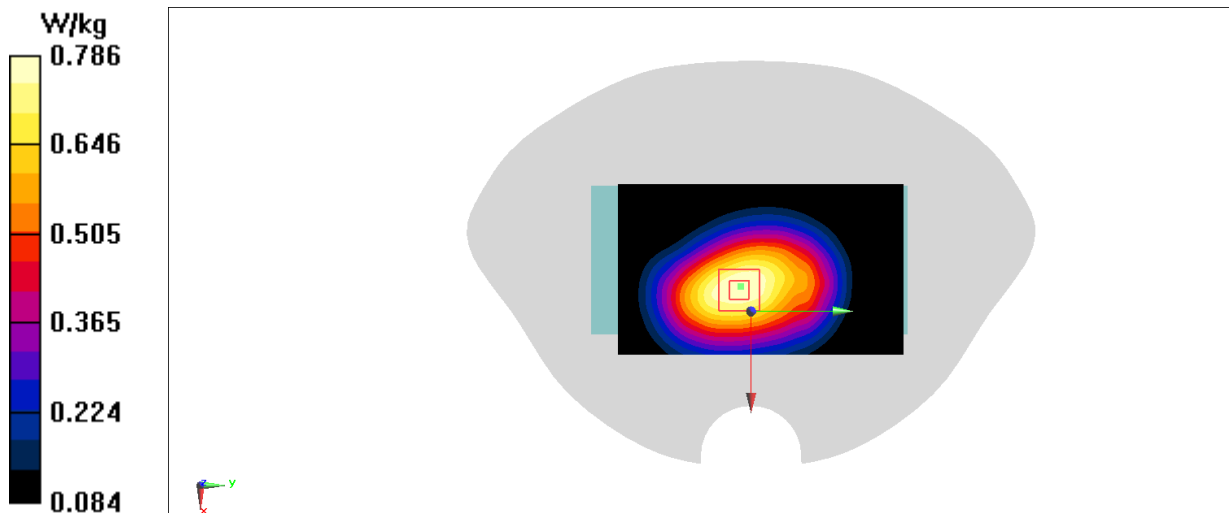
**Zoom Scan (5x5x7)/Cube 0:** Measurement grid:  $dx=8\text{mm}$ ,  $dy=8\text{mm}$ ,  $dz=5\text{mm}$

Reference Value =  $25.54 \text{ V/m}$ ; Power Drift =  $-0.17 \text{ dB}$

Peak SAR (extrapolated) =  $0.880 \text{ W/kg}$

**SAR(1 g) =  $0.631 \text{ W/kg}$ ; SAR(10 g) =  $0.460 \text{ W/kg}$**

Maximum value of SAR (measured) =  $0.786 \text{ W/kg}$



**LTE B12 Head**

Date: 4/15/2022

Electronics: DAE4 Sn1331

Medium: head 750 MHz

Medium parameters used:  $f = 711 \text{ MHz}$ ;  $\sigma = 0.826 \text{ S/m}$ ;  $\epsilon_r = 45.423$ ;  $\rho = 1000 \text{ kg/m}^3$

Ambient Temperature:  $22.9^\circ\text{C}$       Liquid Temperature:  $22.5^\circ\text{C}$

Communication System: LTE Band12 711 MHz Duty Cycle: 1:1

Probe: EX3DV4 - SN7548 ConvF(10.36, 10.36, 10.36)

**Area Scan (81x141x1):** Interpolated grid:  $dx=1.500 \text{ mm}$ ,  $dy=1.500 \text{ mm}$

Maximum value of SAR (interpolated) =  $0.244 \text{ W/kg}$

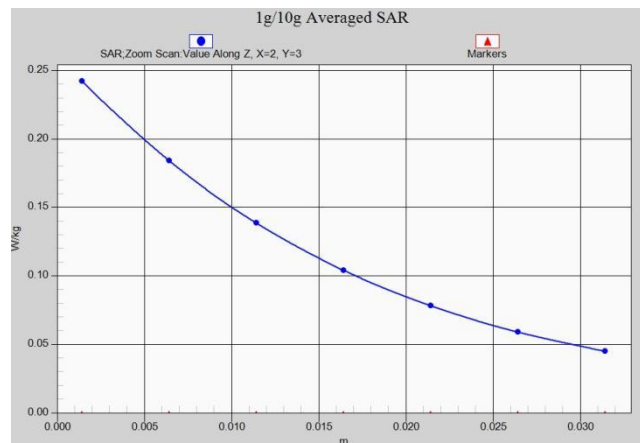
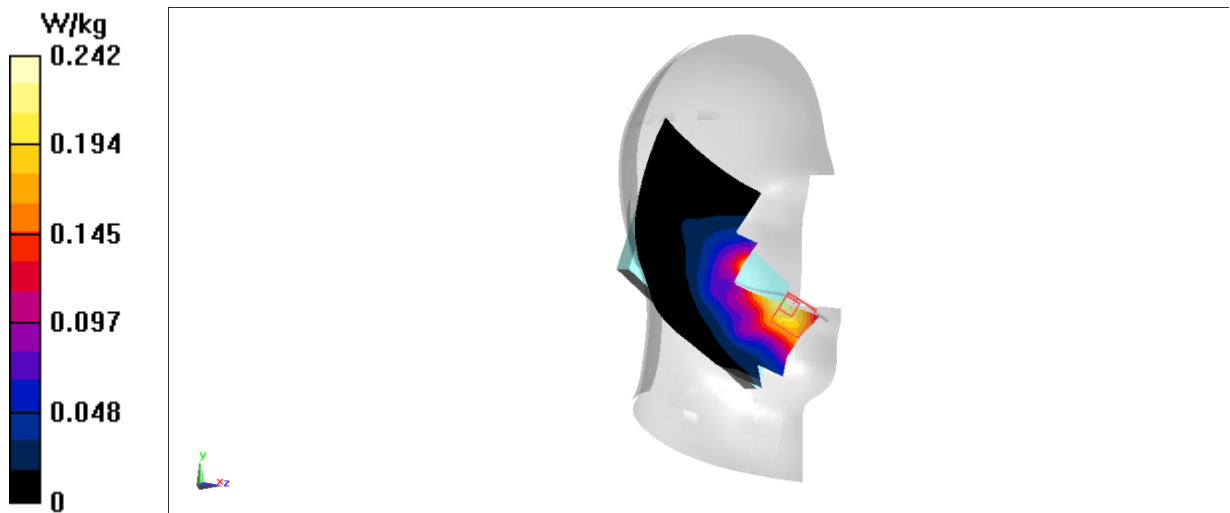
**Zoom Scan (6x7x7)/Cube 0:** Measurement grid:  $dx=8\text{mm}$ ,  $dy=8\text{mm}$ ,  $dz=5\text{mm}$

Reference Value =  $2.788 \text{ V/m}$ ; Power Drift =  $-0.19 \text{ dB}$

Peak SAR (extrapolated) =  $0.256 \text{ W/kg}$

**SAR(1 g) =  $0.194 \text{ W/kg}$ ; SAR(10 g) =  $0.124 \text{ W/kg}$**

Maximum value of SAR (measured) =  $0.242 \text{ W/kg}$



**LTE B12 Body**

Date: 1/13/2022

Electronics: DAE4 Sn1331

Medium: head 750 MHz

Medium parameters used:  $f = 711 \text{ MHz}$ ;  $\sigma = 0.92 \text{ S/m}$ ;  $\epsilon_r = 43.273$ ;  $\rho = 1000 \text{ kg/m}^3$

Ambient Temperature:  $22.9^\circ\text{C}$       Liquid Temperature:  $22.5^\circ\text{C}$

Communication System: LTE Band12 711 MHz Duty Cycle: 1:1

Probe: EX3DV4 - SN7548 ConvF(10.36, 10.36, 10.36)

**Area Scan (61x101x1):** Interpolated grid:  $dx=1.500 \text{ mm}$ ,  $dy=1.500 \text{ mm}$

Maximum value of SAR (interpolated) =  $0.836 \text{ W/kg}$

**Zoom Scan (5x5x7)/Cube 0:** Measurement grid:  $dx=8\text{mm}$ ,  $dy=8\text{mm}$ ,  $dz=5\text{mm}$

Reference Value =  $20.10 \text{ V/m}$ ; Power Drift =  $0.16 \text{ dB}$

Peak SAR (extrapolated) =  $0.535 \text{ W/kg}$

**SAR(1 g) =  $0.377 \text{ W/kg}$ ; SAR(10 g) =  $0.270 \text{ W/kg}$**

Maximum value of SAR (measured) =  $0.473 \text{ W/kg}$

