



HAC T-Coil TEST REPORT

No. I20Z62110-SEM05

For

TCL Communication Ltd.

GSM/UMTS/LTE mobile phone

Model Name: 4056W,4056Z

With

Hardware Version: 03

Software Version: 5FYCZZ00

FCC ID: 2ACCJN048

Results Summary: T Category = T4

Issued Date: 2021-4-1

Note:

The test results in this test report relate only to the devices specified in this report. This report shall not be reproduced except in full without the written approval of CTTL.

The report must not be used by the client to claim product certification, approval, or endorsement by NVLAP, NIST, or any agency of the U.S.Government.

Test Laboratory:

CTTL, Telecommunication Technology Labs, CAICT

No. 51, Xueyuan Road, Haidian District, Beijing, P. R. China 100191.

Tel:+86(0)10-62304633-2512, Fax:+86(0)10-62304633-2504

Email: ctl_terminals@caict.ac.cn, website: www.caict.ac.cn

**REPORT HISTORY**

| Report Number | Revision | Issue Date | Description |
|----------------------|-----------------|-------------------|--|
| I20Z62110-SEM05 | Rev.0 | 2021-3-15 | Initial creation of test report |
| I20Z62110-SEM05 | Rev.1 | 2021-4-1 | Update the Frequency Bands information of section 3.1 and 3.4 on page7 Update the KDB Edition of section 4 on page 8 Remove the below notes in section 10 on page 22 |

TABLE OF CONTENT

| | |
|--|-----------|
| 1 TEST LABORATORY | 5 |
| 1.1 TESTING LOCATION | 5 |
| 1.2 TESTING ENVIRONMENT | 5 |
| 1.3 PROJECT DATA | 5 |
| 1.4 SIGNATURE | 5 |
| 2 CLIENT INFORMATION | 6 |
| 2.1 APPLICANT INFORMATION | 6 |
| 2.2 MANUFACTURER INFORMATION | 6 |
| 3 EQUIPMENT UNDER TEST (EUT) AND ANCILLARY EQUIPMENT (AE) | 7 |
| 3.1 ABOUT EUT | 7 |
| 3.2 INTERNAL IDENTIFICATION OF EUT USED DURING THE TEST | 7 |
| 3.3 INTERNAL IDENTIFICATION OF AE USED DURING THE TEST | 7 |
| 3.4 AIR INTERFACES / BANDS INDICATING OPERATING MODES | 7 |
| 4 REFERENCE DOCUMENTS | 8 |
| 5 OPERATIONAL CONDITIONS DURING TEST | 9 |
| 5.1 HAC MEASUREMENT SET-UP | 9 |
| 5.2 AM1D PROBE | 10 |
| 5.3 AMCC | 11 |
| 5.4 AMMI | 11 |
| 5.5 TEST ARCH PHANTOM & PHONE POSITIONER | 11 |
| 5.6 ROBOTIC SYSTEM SPECIFICATIONS | 12 |
| 5.7 T-COIL MEASUREMENT POINTS AND REFERENCE PLANE | 12 |
| 6 T-COIL TEST PROCEDURES | 14 |
| 7 T-COIL PERFORMANCE REQUIREMENTS | 15 |
| 7.1 T-COIL COUPLING FIELD INTENSITY | 15 |
| 7.2 FREQUENCY RESPONSE | 15 |
| 8 CMRS VOICE DUT CONFIGURATION | 17 |
| 8.1 GSM CODEC INVESTIGATION | 17 |
| 8.3 UMTS CODEC INVESTIGATION | 17 |
| 9 VOLTE TEST SYSTEM SETUP AND DUT CONFIGURATION | 18 |
| 9.1 TEST SYSTEM SETUP FOR VOLTE OVER IMS T-COIL TESTING | 18 |
| 9.2 CODEC CONFIGURATION | 19 |
| 9.3 RADIO CONFIGURATION | 19 |
| 9.4 LTE TDD UPLINK-DOWNLINK CONFIGURATION INVESTIGATION | 20 |
| 10 VOWIFI TEST SYSTEM SETUP AND DUT CONFIGURATION | 22 |
| 10.1 TEST SYSTEM SETUP FOR VOWIFI OVER IMS T-COIL TESTING | 22 |
| 10.2 CODEC CONFIGURATION | 23 |
| 10.3 RADIO CONFIGURATION | 23 |
| 11 HAC T-COIL TEST DATA SUMMARY | 25 |
| 11.1 TEST RESULTS FOR 2/3G | 25 |
| 11.2 TEST RESULTS FOR LTE | 25 |
| 11.3 TEST RESULTS FOR WIFI | 26 |
| 11.4 TOTAL MEASUREMENT CONCLUSION | 27 |
| 12 MEASUREMENT UNCERTAINTY | 28 |
| 13 MAIN TEST INSTRUMENTS | 29 |
| ANNEX A TEST LAYOUT | 30 |



No.I20Z62110-SEM05

| | |
|--|-----------|
| ANNEX B TEST PLOTS | 31 |
| ANNEX C FREQUENCY REPOSE CURVES | 47 |
| ANNEX D PROBE CALIBRATION CERTIFICATE | 49 |
| ANNEX E DAE CALIBRATION CERTIFICATE | 52 |

1 Test Laboratory

1.1 Testing Location

| | |
|---------------|---|
| Company Name: | CTTL(Shouxiang) |
| Address: | No. 51 Shouxiang Science Building, Xueyuan Road, Haidian District, Beijing, P. R. China100191 |

1.2 Testing Environment

| | |
|---|----------------|
| Temperature: | 18°C~25°C, |
| Relative humidity: | 30%~ 70% |
| Ground system resistance: | < 0.5 Ω |
| Ambient noise is checked and found very low and in compliance with requirement of standards. Reflection of surrounding objects is minimized and in compliance with requirement of standards. | |

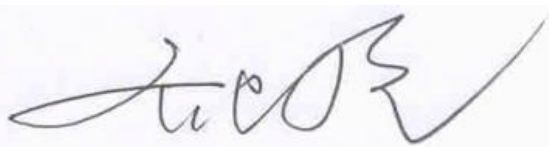
1.3 Project Data

| | |
|---------------------|-------------------|
| Project Leader: | Qi Dianyuan |
| Test Engineer: | Lin Xiaojun |
| Testing Start Date: | February 22, 2021 |
| Testing End Date: | February 28, 2021 |

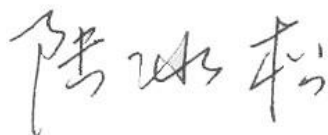
1.4 Signature



Lin Xiaojun
(Prepared this test report)



Qi Dianyuan
(Reviewed this test report)



Lu Bingsong
Deputy Director of the laboratory
(Approved this test report)



2 Client Information

2.1 Applicant Information

| | |
|-----------------|---|
| Company Name: | TCL Communication Ltd. |
| Address/Post: | 5/F, Building 22E, 22 Science Park East Avenue, Hong Kong Science Park, Shatin, NT, Hong Kong |
| Contact Person: | Gong Zhizhou |
| Contact Email: | zhizhou.gong@tcl.com |
| Telephone: | 0086-755-36611722 |
| Fax | 0086-755-36612000-81722 |

2.2 Manufacturer Information

| | |
|-----------------|---|
| Company Name: | TCL Communication Ltd. |
| Address/Post: | 5/F, Building 22E, 22 Science Park East Avenue, Hong Kong Science Park, Shatin, NT, Hong Kong |
| Contact Person: | Gong Zhizhou |
| Contact Email: | zhizhou.gong@tcl.com |
| Telephone: | 0086-755-36611722 |
| Fax | 0086-755-36612000-81722 |

3 Equipment Under Test (EUT) and Ancillary Equipment (AE)

3.1 About EUT

| | |
|--------------------|--|
| Description: | GSM/UMTS/LTE mobile phone |
| Model name: | 4056W, 4056Z |
| Operating mode(s): | GSM850/900/1800/1900, WCDMAB2/B4/B5, BT, Wi-Fi, LTE Band 2/4/5/12/25/26/41/66/71 |

3.2 Internal Identification of EUT used during the test

| EUT ID* | IMEI | HW Version | SW Version |
|---------|-----------------|------------|------------|
| EUT1 | 015886000002712 | 03 | 5FYCZZ00 |
| EUT2 | 015886000003082 | 03 | 5FYCZZ00 |

*EUT ID: is used to identify the test sample in the lab internally.

Note: It is performed to test HAC with the EUT1-2

3.3 Internal Identification of AE used during the test

| AE ID* | Description | Model | SN | Manufacturer |
|--------|-------------|----------|----|--------------|
| AE1 | Battery | TLi017C7 | / | VEKEN |

*AE ID: is used to identify the test sample in the lab internally.

3.4 Air Interfaces / Bands Indicating Operating Modes

| Air-interface | Band(MHz) | Type | C63.19/tested | Simultaneous Transmissions | Name of Voice Service |
|---------------|--------------------|------|---------------|----------------------------|-----------------------|
| GSM | 850 | VO | Yes | BT, WLAN | CMRS Voice |
| | 1900 | | | | |
| WCDMA (UMTS) | 850 | VO | Yes | BT, WLAN | CMRS Voice |
| | 1700 | | | | |
| | 1900 | | | | |
| LTE TDD | Band41 | V/D | Yes | BT, WLAN | VoLTE |
| LTE FDD | Band12/25/26/66/71 | V/D | Yes | BT, WLAN | VoLTE |
| BT | 2450 | DT | NA | GSM,WCDMA,LTE | NA |
| WLAN | 2450 | V/D | Yes | GSM,WCDMA,LTE | VoWiFi |

NA: Not Applicable VO: Voice Only V/D: CMRS and IP Voice Service over Digital Transport

DT: Digital Transport

* HAC Rating was not based on concurrent voice and data modes, Non current mode was found to represent worst case rating for both M and T rating

Note1 = No Associated T-Coil measurement has been made in accordance with 285076 D02 T-Coil testing for CMRS IP

4 Reference Documents

The following document listed in this section is referred for testing.

| Reference | Title | Version |
|---------------------|--|--------------|
| ANSI C63.19-2011 | American National Standard for Methods of Measurement of Compatibility between Wireless Communication Devices and Hearing Aids | 2011 Edition |
| KDB285076 D01v05r01 | Equipment Authorization Guidance for Hearing Aid Compatibility | 2020 Edition |
| KDB285076 D02v03 | Guidance for performing T-Coil tests for air interfaces supporting voice over IP (e.g., LTE and WiFi) to support CMRS based telephone services | 2017 Edition |

5 OPERATIONAL CONDITIONS DURING TEST

5.1 HAC MEASUREMENT SET-UP

These measurements are performed using the DASY5 NEO automated dosimetric assessment system. It is made by Schmid & Partner Engineering AG (SPEAG) in Zurich, Switzerland. It consists of high precision robotics system (Stäubli), robot controller, Intel Core2 computer, near-field probe, probe alignment sensor. The robot is a six-axis industrial robot performing precise movements. A cell controller system contains the power supply, robot controller, teach pendant (Joystick), and remote control, is used to drive the robot motors. The PC consists of the HP Intel Core2 1.86 GHz computer with Windows XP system and HAC Measurement Software DASY5 NEO, A/D interface card, monitor, mouse, and keyboard. The Stäubli Robot is connected to the cell controller to allow software manipulation of the robot. A data acquisition electronic (DAE) circuit performs the signal amplification, signal multiplexing, AD-conversion, offset measurements, mechanical surface detection, collision detection, etc. is connected to the Electro-optical coupler (EOC). The EOC performs the conversion from the optical into digital electric signal of the DAE and transfers data to the PC plug-in card.

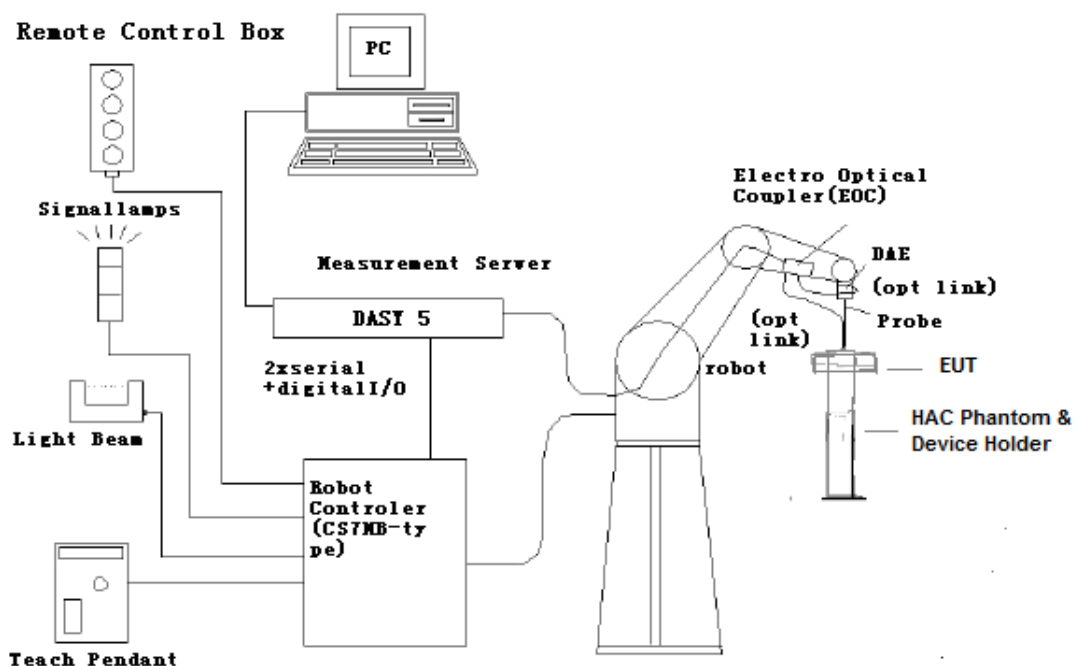


Figure 5.1 HAC Test Measurement Set-up

The DAE4 consists of a highly sensitive electrometer-grade preamplifier with auto-zeroing, a channel and gain-switching multiplexer, a fast 16 bit AD-converter and a command decoder and control logic unit. Transmission to the PC-card is accomplished through an optical downlink for data and status information and an optical uplink for commands and clock lines. The mechanical probe mounting device includes two different sensor systems for frontal and sidewise probe contacts. They are also used for mechanical surface detection and probe collision detection. The robot uses its own controller with a built in VME-bus computer.

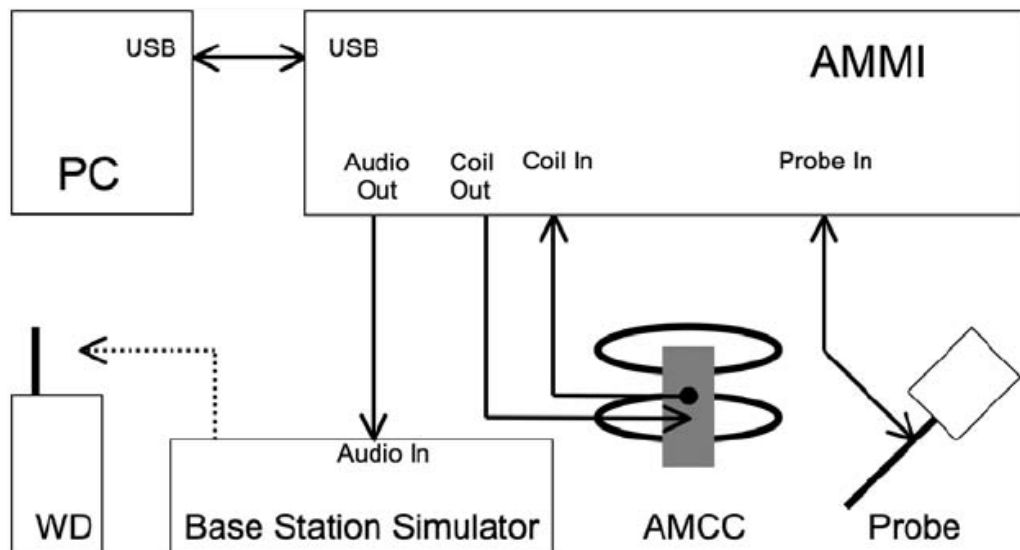


Figure 5.2 T-Coil setup with HAC Test Arch and AMCC

5.2 AM1D probe

The AM1D probe is an active probe with a single sensor. It is fully RF-shielded and has a rounded tip 6mm in diameter incorporating a pickup coil with its center offset 3mm from the tip and the sides. The symmetric signal preamplifier in the probe is fed via the shielded symmetric output cable from the AMMI with a 48V "phantom" voltage supply. The 7-pin connector on the back in the axis of the probe does not carry any signals. It is mounted to the DAE for the correct orientation of the sensor. If the probe axis is tilted 54.7 degree from the vertical, the sensor is approximately vertical when

the signal connector is at the underside of the probe (cable hanging downwards).

Specification:

| | |
|------------------------|---|
| Frequency range | 0.1~20kHz (RF sensitivity < -100dB, fully RF shielded) |
| Sensitivity | < -50dB A/m @ 1kHz |
| Pre-amplifier | 40dB, symmetric |
| Dimensions | Tip diameter/length: 6/290mm, sensor according to ANSI-C63.19 |

5.3 AMCC

The Audio Magnetic Calibration coil is a Helmholtz Coil designed for calibration of the AM1D probe. The two horizontal coils generate a homogeneous magnetic field in the z direction. The DC input resistance is adjusted by a series resistor to approximately 50Ohm, and a shunt resistor of 10Ohm permits monitoring the current with a scale of 1:10

Port description:

| Signal | Connector | Resistance |
|--------------|-----------|--|
| Coil In | BNC | Typically 50Ohm |
| Coil Monitor | BNO | 100ohm±1% (100mV corresponding to 1 A/m) |

Specification:

| | |
|-------------------|--|
| Dimensions | 370 x 370 x 196 mm, according to ANSI-C63.19 |
|-------------------|--|

5.4 AMMI



Figure 5.3 AMMI front panel

The Audio Magnetic Measuring Instrument (AMMI) is a desktop 19-inch unit containing a sampling unit, a waveform generator for test and calibration signals, and a USB interface.

Specification:

| | |
|-------------------------------|---|
| Sampling rate | 48 kHz / 24 bit |
| Dynamic range | 85 dB |
| Test signal generation | User selectable and predefined (vis PC) |
| Calibration | Auto-calibration / full system calibration using AMCC with monitor output |
| Dimensions | 482 x 65 x 270 mm |

5.5 Test Arch Phantom & Phone Positioner

The Test Arch phantom should be positioned horizontally on a stable surface. Reference markings on the Phantom allow the complete setup of all predefined phantom positions and measurement grids by manually teaching three points in the robot. It enables easy and well defined positioning of the phone and validation dipoles as well as simple teaching of the robot (Dimensions: 370 x 370 x 370 mm).

The Phone Positioner supports accurate and reliable positioning of any phone with effect on near

field $< \pm 0.5$ dB.

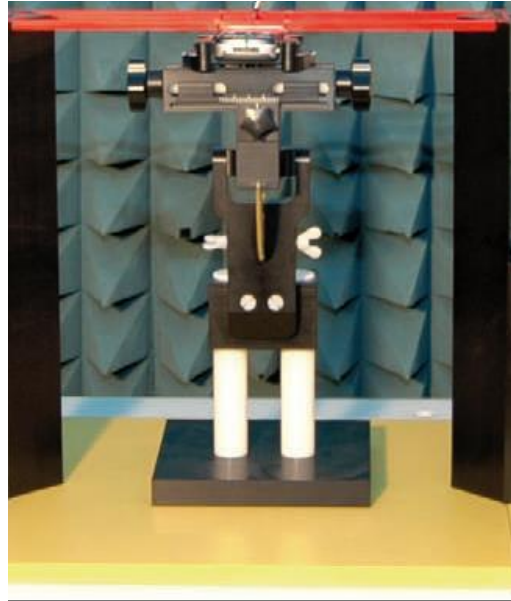


Figure 5.4 HAC Phantom & Device Holder

5.6 Robotic System Specifications

Specifications

Positioner: Stäubli Unimation Corp. Robot Model: RX160L

Repeatability: ± 0.02 mm

No. of Axis: 6

Data Acquisition Electronic (DAE) System

Cell Controller

Processor: Intel Core2

Clock Speed: 1.86GHz

Operating System: Windows XP

Data Converter

Features: Signal Amplifier, multiplexer, A/D converter, and control logic

Software: DASY5 software

Connecting Lines: Optical downlink for data and status info.

Optical uplink for commands and clock

5.7 T-Coil measurement points and reference plane

Figure 6.5 illustrates the standard probe orientations. Position 1 is the perpendicular orientation of the probe coil; orientation 2 is the transverse orientations. The space between the measurement positions is not fixed. It is recommended that a scan of the WD be done for each probe coil orientation and that the maximum level recorded be used as the reading for that orientation of the probe coil.

1) The reference plane is the planar area that contains the highest point in the area of the phone that normally rests against the user's ear. It is parallel to the centerline of the receiver area of the

phone and is defined by the points of the receiver-end of the WD handset, which, in normal handset use, rest against the ear.

- 2) The measurement plane is parallel to, and 10 mm in front of, the reference plane.
- 3) The reference axis is normal to the reference plane and passes through the center of the receiver speaker section (or the center of the hole array); or may be centered on a secondary inductive source. The actual location of the measurement point shall be noted in the test report as the measurement reference point.
- 4) The measurement points may be located where the axial and radial field intensity measurements are optimum with regard to the requirements. However, the measurement points should be near the acoustic output of the WD and shall be located in the same half of the phone as the WD receiver. In a WD handset with a centered receiver and a circularly symmetrical magnetic field, the measurement axis and the reference axis would coincide.
- 5) The relative spacing of each measurement orientation is not fixed. The axial and two radial orientations should be chosen to select the optimal position.
- 6) The measurement point for the axial position is located 10 mm from the reference plane on the measurement axis. The actual location of the measurement point shall be noted in test reports and designated as the measurement reference point.

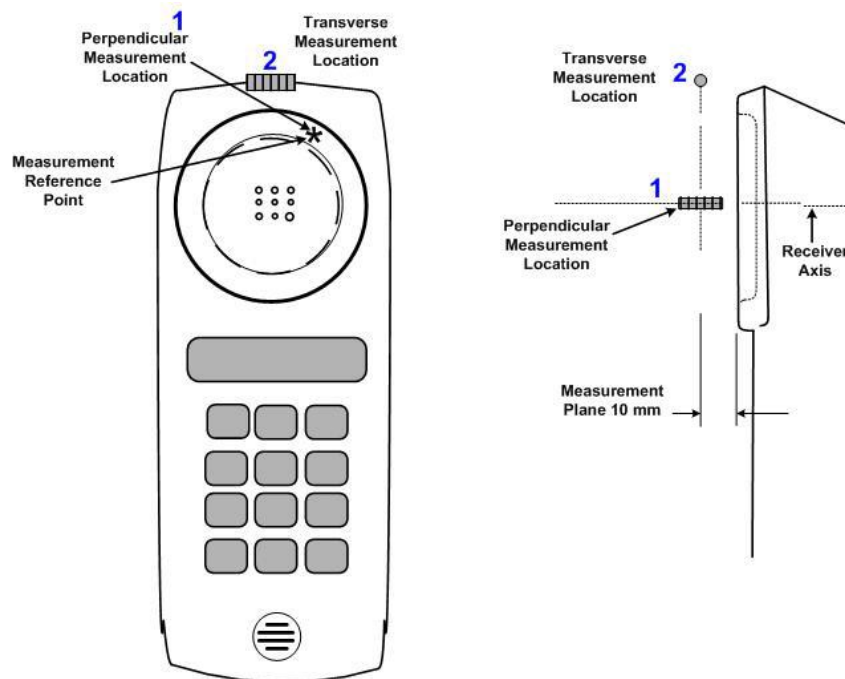


Figure 5.5 Axis and planes for WD audio frequency magnetic field measurements

6 T-Coil TEST PROCEDURES

The following illustrate a typical test scan over a wireless communications device:

- 1) Geometry and signal check: system probe alignment, proper operation of the field probe, probe measurement system, other instrumentation, and the positioning system was confirmed. A surface calibration was performed before each setup change to ensure repeatable spacing and proper maintenance of the measurement plane using the test Arch.
- 2) Set the reference drive level of signal voice defined in C63.19 per 7.4.2.1.
- 3) The ambient and test system background noise (dB A/m) was measured as well as ABM2 over the full measurement. The maximum noise level must be at least 10dB below the limit.
- 4) The DUT was positioned in its intended test position, acoustic output point of the device perpendicular to the field probe.
- 5) The DUT operation for maximum rated RF output power was configured and connected by using of coaxial cable connection to the base station simulator at the test channel and other normal operating parameters as intended for the test. The battery was ensured to be fully charged before each test. The center sub-grid was centered over the center of the acoustic output (also audio band magnetic output, if applicable). The DUT audio output was positioned tangent (as physically possible) to the measurement plane.
- 6) The DUT's RF emission field was eliminated from T-coil results by using a well RF-shielding of the probe, AM1D, and by using of coaxial cable connection to a Base Station Simulator. One test channel was pre-measurement to avoid this possibility.
- 7) Determined the optimal measurement locations for the DUT by following the three steps, coarse resolution scan, fine resolution scans, and point measurement, as described in C63.19 per 7.4.4.2. At each measurement locations, samples in the measurement window duration were evaluated to get ABM1 and the signal spectrum. The noise measurement was performed after the scan with the signal, the same happened, just with the voice signal switched off. The ABM2 was calculated from this second scan.
- 8) All results resulting from a measurement point in a T-Coil job were calculated from the signal samples during this window interval. ABM values were averaged over the sequence of these samples.
- 9) At an optimal point measurement, the SNR (ABM1/ABM2) was calculated for perpendicular and transverse orientation, and the frequency response was measured for perpendicular.
- 10) Corrected for the frequency response after the DUT measurement since the DASY5 system had known the spectrum of the input signal by using a reference job.
- 11) In SEMCAD postprocessing, the spectral points are in addition scaled with the high-pass (half-band) and the A-weighting, bandwidth compensated factor (BWC) and those results are final as shown in this report.

7 T-Coil PERFORMANCE REQUIREMENTS

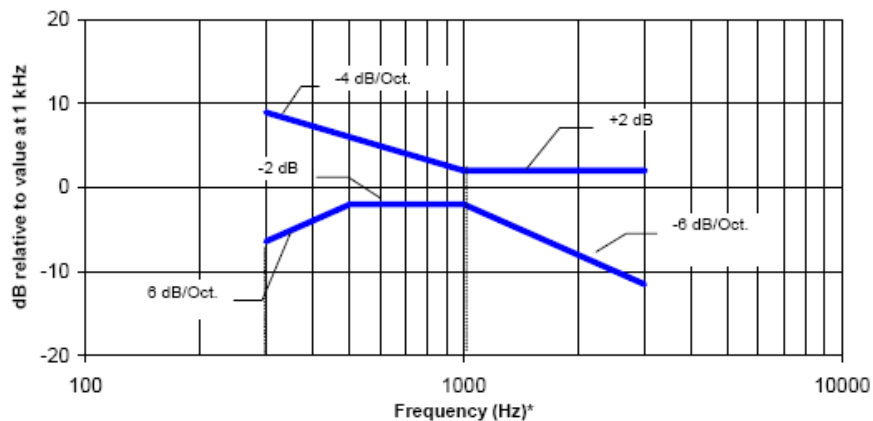
In order to be rated for T-Coil use, a WD shall meet the requirements for signal level and signal quality contained in this part.

7.1 T-Coil coupling field intensity

When measured as specified in ANSI C63.19, the T-Coil signal shall be ≥ -18 dB (A/m) at 1 kHz, in a 1/3 octave band filter for all orientations.

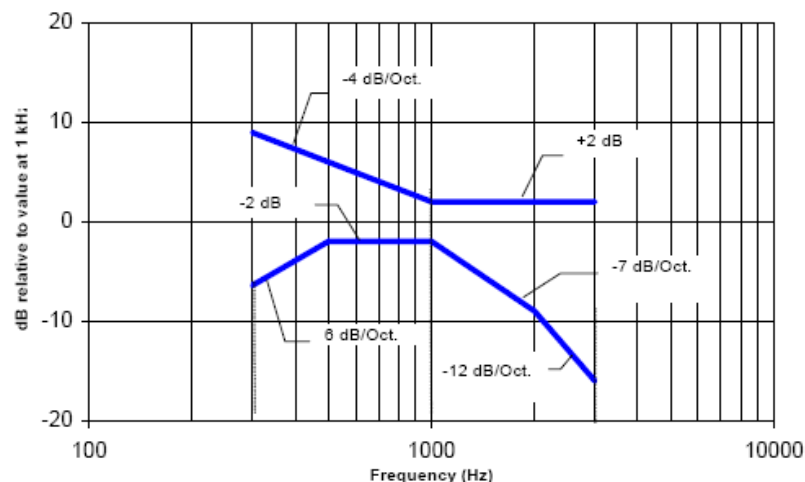
7.2 Frequency response

The frequency response of the axial component of the magnetic field, measured in 1/3 octave bands, shall follow the response curve specified in this sub-clause, over the frequency range 300 Hz to 3000 Hz. Figure 7.1 and Figure 7.2 provide the boundaries for the specified frequency. These response curves are for true field strength measurements of the T-Coil signal. Thus the 6 dB/octave probe response has been corrected from the raw readings.



NOTE—Frequency response is between 300 Hz and 3000 Hz.

Figure 7.1—Magnetic field frequency response for WDs with a field ≤ -15 dB (A/m) at 1 kHz



NOTE—Frequency response is between 300 Hz and 3000 Hz.

Figure 7.2—Magnetic field frequency response for WDs with a field that exceeds -15 dB (A/m) at 1 kHz

7.3 Signal quality

This part provides the signal quality requirement for the intended T-Coil signal from a WD. Only the RF immunity of the hearing aid is measured in T-Coil mode. It is assumed that a hearing aid can have no immunity to an interference signal in the audio band, which is the intended reception band for this mode. So, the only criteria that can be measured is the RF immunity in T-Coil mode. This is measured using the same procedure as for the audio coupling mode and at the same levels.

The worst signal quality of the three T-Coil signal measurements shall be used to determine the T-Coil mode category per Table 1

Table 1:T-Coil signal quality categories

| Category | Telephone parameters WD signal quality [(signal + noise) – to – noise ratio in decibels] |
|-----------------|---|
| Category T1 | 0 dB to 10 dB |
| Category T2 | 10 dB to 20 dB |
| Category T3 | 20 dB to 30 dB |
| Category T4 | > 30 dB |

8 CMRS Voice DUT CONFIGURATION

8.1 GSM Codec Investigation

The middle channel of each frequency band is used for T-coil testing according ANSI C63.19-2011. Choose worst case from radio configuration investigation. After investigation was performed to determine the audio codec configuration to be used for testing, the following tests results which the worst case codec would be remarked to be used for the testing for the DUT. According to C63 and KDB 285076 D02v03, GSM input level is -16dBm0.

Table 8-1 GSM CMRS Codec Investigation

| Codec Setting | FR VR | HR V1 | EFR | Orientation | Band | Channel |
|--------------------|-------|-------|-------|-------------|---------|---------|
| ABM1 (dBA/m) | 10.67 | 12.14 | 11.51 | Z(axial) | GSM1900 | 661 |
| Frequency Response | PASS | PASS | PASS | | | |
| SNR (dB) | 53.27 | 55.31 | 54.12 | | | |

8.3 UMTS Codec Investigation

The middle channel of each frequency band is used for T-coil testing according ANSI C63.19-2011. Choose worst case from radio configuration investigation. After investigation was performed to determine the audio codec configuration to be used for testing, the following tests results which the worst case codec would be remarked to be used for the testing for the DUT. According to C63 and KDB 285076 D02v03, UMTS input level is -16dBm0.

Table 8-2 WCDMA/UMTS CMRS Codec Investigation

| Codec Setting | AMR 12.2kbps | AMR 7.95kbps | AMR 4.75kbps | Orientation | Band | Channel |
|--------------------|-----------------|-----------------|-----------------|-------------|---------------|---------|
| ABM1 (dBA/m) | 13.52 | 12.14 | 13.13 | Z(axial) | WCDMA 1900 | 9400 |
| Frequency Response | PASS | PASS | PASS | | | |
| SNR (dB) | 56.29 | 58.37 | 56.94 | | | |

9 VoLTE TEST SYSTEM SETUP AND DUT CONFIGURATION

9.1 Test System Setup for VoLTE over IMS T-coil Testing

The general test setup used for VoLTE over IMS is shown below. The callbox used when performing VoLTE over IMS T-coil measurements is a CMW500. The Data Application Unit (DAU) of the CMW500 was used to simulate the IP Multimedia Subsystem (IMS) server. According to C63 and KDB 285076 D02v03, VoLTE input level is -20dBm0.

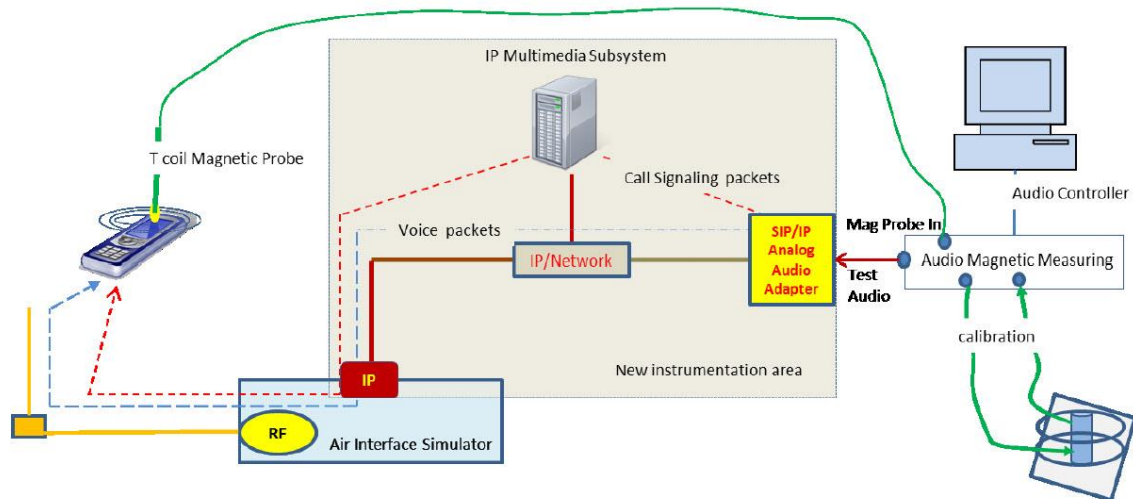


Figure 9.1 Test Setup for VoLTE over IMS T-coil Measurements

No correction gain factors were measured for VoLTE due to the Rohde & Schwarz CMW500, hosting a calibrated audio board. The gains used to measure VoLTE are set to 100.

The following software/firmware was used to simulate the VoLTE server for testing:

| Firmware | License Keys | Software Name |
|-------------------|--------------|-----------------------|
| V3.7.50 for LTE | KS500 | LTE FDD R8 SIG BASIC |
| | KS550 | LTE TDD R8 SIG BASIC |
| | KA100 | IP APPL ENABLING IPv4 |
| | KA150 | IP APPL ENABLING IPv6 |
| V3.7.20 for Audio | KAA20 | IP APPL IMS BASIC |
| | KM050 | DATA APPL MEAS |
| | KS104 | EVS SPEECH CODEC |

9.2 Codec Configuration

An investigation was performed to determine the audio codec configuration to be used for testing. EVS Primary NB 5.9kbps setting was used for the audio codec on the CMW500 for VoLTE over IMS T-coil testing. See below table for comparisons between different codecs and codec data rates:

Table 9-1 AMR Codec Investigation – VoLTE over IMS

| Codec Setting | WB AMR 23.85kbps | WB AMR 6.60kbps | NB AMR 12.2kbps | NB AMR 4.75kbps | Orientation | Band/BW | Channel |
|--------------------|---------------------|--------------------|--------------------|--------------------|-------------|---------|---------|
| ABM1 (dBA/m) | 3.71 | 8.71 | 14.70 | 14.59 | Z(axial) | B25/20M | 26365 |
| Frequency Response | PASS | PASS | PASS | PASS | | | |
| SNR (dB) | 59.24 | 58.73 | 69.47 | 56.46 | | | |

Table 9-2 EVS Codec Investigation – VoLTE over IMS

| Codec Setting | EVS Primary WB 13.2kbps | EVS Primary WB 5.9kbps | EVS Primary NB 13.2kbps | EVS Primary NB 5.9kbps | Orientation | Band /BW | Channel |
|-----------------------|----------------------------|---------------------------|----------------------------|---------------------------|-------------|-------------|---------|
| ABM1 (dBA/m) | 11.94 | 11.71 | 10.87 | 11.08 | Z(axial) | B25/20M | 26365 |
| Frequency Response | PASS | PASS | PASS | PASS | | | |
| SNR (dB) | 64.96 | 53.92 | 55.29 | 52.50 | | | |

9.3 Radio Configuration

An investigation was performed to determine the modulation, the bandwidth configuration and RB configuration to be used for testing. 20MHz BW, 16QAM, 100RB, 0RB offset was used for the testing as the worst-case configuration for the handset. See below table for comparisons between different radio configurations:

Table 9-3 VoLTE over IMS SNR by Radio Configuration

| Band | Channel | Bandwidth [MHz] | Modulation | RB Size | RB Offset(%) | ABM1 [dB(A/m)] | SNR [dB] |
|---------|---------|--------------------|------------|---------|-----------------|-------------------|-------------|
| LTE B25 | 26365 | 20 | QPSK | 1 | 0 | 11.19 | 52.11 |
| LTE B25 | 26365 | 20 | QPSK | 1 | 50 | 11.08 | 52.50 |
| LTE B25 | 26365 | 20 | QPSK | 1 | 100 | 9.12 | 50.91 |
| LTE B25 | 26365 | 20 | QPSK | 50 | 0 | 9.15 | 50.82 |
| LTE B25 | 26365 | 20 | QPSK | 50 | 50 | 10.57 | 51.37 |
| LTE B25 | 26365 | 20 | QPSK | 50 | 100 | 10.63 | 51.76 |
| LTE B25 | 26365 | 20 | QPSK | 100 | 0 | 8.75 | 50.53 |
| LTE B25 | 26365 | 20 | 16QAM | 100 | 0 | 7.88 | 49.59 |
| LTE B25 | 26365 | 15 | 16QAM | 75 | 0 | 11.39 | 54.56 |
| LTE B25 | 26365 | 10 | 16QAM | 50 | 0 | 10.08 | 53.33 |
| LTE B25 | 26365 | 5 | 16QAM | 25 | 0 | 10.51 | 54.83 |
| LTE B25 | 26365 | 3 | 16QAM | 15 | 0 | 11.18 | 53.58 |
| LTE B25 | 26365 | 1.4 | 16QAM | 6 | 0 | 10.23 | 53.81 |

9.4 LTE TDD Uplink-Downlink Configuration Investigation

An investigation was performed to determine the worst-case Uplink-Downlink configuration for LTE TDD T-coil testing.

Per 3GPP TS 36.211, the total frame length for each TDD radio frame of length $T_f=307200$. $T_s=10$ ms, where T_s is a number of time units equal to $1/(150002048)$ seconds. Additionally, each radio frame consists of 10 subframes, each of length $30720 \cdot T_s = 1$ ms, and subframes can be designated as uplink (U), downlink (D), or special subframe (S), depending on the Uplink-Downlink configuration as indicated in Table 4.2-2 of 3GPP TS 36.211. In the transmission duty factor calculation, the special subframe configuration with the shortest UpPTS duration within the special subframe is used and will be applied for measurement. From 3GPP TS 36.211 Table 4.2-1, the shortest UpPTS is $2192 \cdot T_s$ which occurs in the normal cyclic prefix and special subframe configuration 4.

See table below outlining the calculated transmission duty cycles for each Uplink-Downlink configuration:

Table 9-4 Uplink-Downlink Configurations for Type 2 Frame Structures

| Uplink-downlink configuration | Downlink-to-Uplink Switch-point periodicity | Subframe number | | | | | | | | | | Calculated Transmission Duty Cycle (%) |
|-------------------------------|---|-----------------|---|---|---|---|---|---|---|---|---|--|
| | | 0 | 1 | 2 | 3 | 4 | 5 | 6 | 7 | 8 | 9 | |
| 0 | 5 ms | D | S | U | U | U | D | S | U | U | U | 61.4% |
| 1 | 5 ms | D | S | U | U | D | D | S | U | U | D | 41.4% |
| 2 | 5 ms | D | S | U | D | D | D | S | U | D | D | 21.4% |
| 3 | 10 ms | D | S | U | U | U | D | D | D | D | D | 30.7% |
| 4 | 10 ms | D | S | U | U | D | D | D | D | D | D | 20.7% |
| 5 | 10 ms | D | S | U | D | D | D | D | D | D | D | 10.7% |
| 6 | 5 ms | D | S | U | U | U | D | S | U | U | D | 51.4% |

a. Power Class 2 Uplink-Downlink Configuration Investigation

Power Class 2 was evaluated with the following radio configurations: channel 40620, 20MHz BW, 16QAM, 100RB, 0RB offset. For Power Class 2, configurations 1-5 are supported. The configuration which resulted in the worst SNR was used for full testing. Uplink-Downlink configuration 1 was used as the worst-case configuration for LTE TDD T-coil testing. See table below for the SNR comparison between each Uplink-Downlink configuration:

Table 9-5 LTE TDD Power Class 2 SNR by UL-DL Configuration

| Frequency [MHz] | Channel | Bandwidth [MHz] | Modulation | RB Size | RB Offset | UL-DL Configuration | ABM1 [dB(A/m)] | SNR [dB] |
|-----------------|---------|-----------------|------------|---------|-----------|---------------------|----------------|----------|
| 2593 | 40620 | 20 | 16QAM | 100 | 0 | 1 | 9.93 | 50.80 |
| 2593 | 40620 | 20 | 16QAM | 100 | 0 | 2 | 10.63 | 54.34 |
| 2593 | 40620 | 20 | 16QAM | 100 | 0 | 3 | 8.93 | 54.62 |
| 2593 | 40620 | 20 | 16QAM | 100 | 0 | 4 | 10.34 | 57.52 |
| 2593 | 40620 | 20 | 16QAM | 100 | 0 | 5 | 8.18 | 61.08 |

b. Power Class 3 Uplink-Downlink Configuration Investigation

Power Class 3 was evaluated with the following radio configurations: channel 40620, 20MHz BW, 16QAM, 100RB, 0RB offset. For Power Class 3, all configurations (0-6) are supported. The configuration which resulted in the worst SNR was used for full testing. Uplink-Downlink configuration 0 was used as the worst-case configuration for LTE TDD T-coil testing. See table below for the SNR comparison between each Uplink-Downlink configuration:

Table 9-6 LTE TDD Power Class 3 SNR by UL-DL Configuration

| Frequency [MHz] | Channel | Bandwidth [MHz] | Modulation | RB Size | RB Offset | UL-Configuration | ABM1 [dB(A/m)] | SNR [dB] |
|-----------------|---------|-----------------|------------|---------|-----------|------------------|----------------|----------|
| 2593 | 40620 | 20 | 16QAM | 100 | 0 | 0 | 9.54 | 51.42 |
| 2593 | 40620 | 20 | 16QAM | 100 | 0 | 1 | 12.27 | 59.41 |
| 2593 | 40620 | 20 | 16QAM | 100 | 0 | 2 | 12.52 | 59.59 |
| 2593 | 40620 | 20 | 16QAM | 100 | 0 | 3 | 11.07 | 57.76 |
| 2593 | 40620 | 20 | 16QAM | 100 | 0 | 4 | 10.83 | 54.67 |
| 2593 | 40620 | 20 | 16QAM | 100 | 0 | 5 | 11.57 | 52.72 |
| 2593 | 40620 | 20 | 16QAM | 100 | 0 | 6 | 8.95 | 52.91 |

c. Conclusion

Per the investigations above, UL-DL Configuration 1 was used to evaluate LTE TDD Power Class 2 and UL-DL Configuration 0 was used to evaluate LTE TDD Power Class 3.

10 VoWiFi TEST SYSTEM SETUP AND DUT CONFIGURATION

10.1 Test System Setup for VoWiFi over IMS T-coil Testing

The general test setup used for VoWiFi over IMS, or CMRS WiFi Calling, is shown below. The callbox used when performing VoWiFi over IMS T-coil measurements is a CMW500. The Data Application Unit (DAU) of the CMW500 was used to simulate the IP Multimedia Subsystem (IMS) server. According to C63 and KDB 285076 D02v03, VoWiFi input level is -20dBm0.

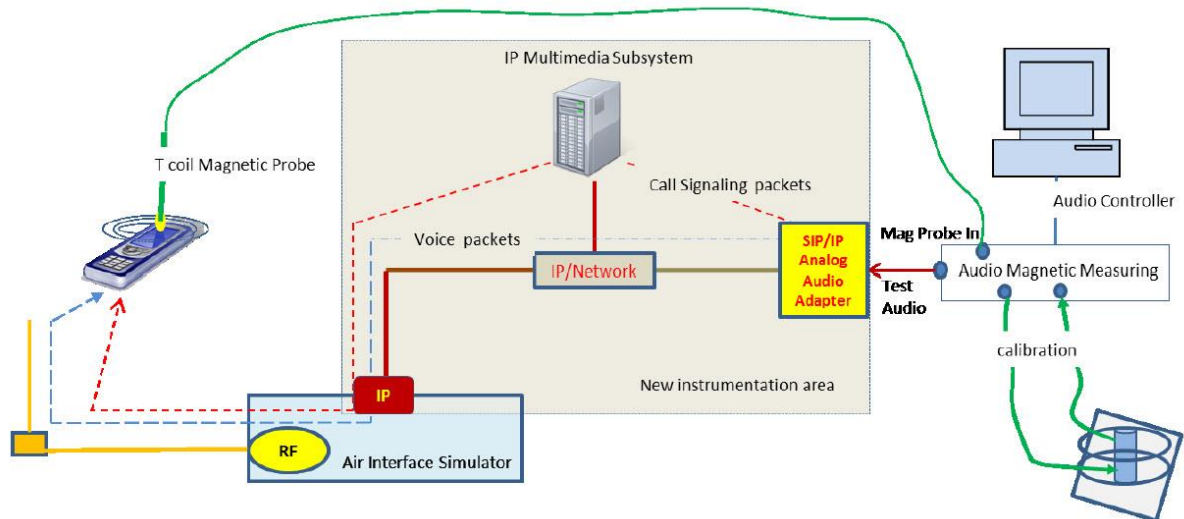


Figure 10.1 Test Setup for VoWiFi over IMS T-coil Measurements

No correction gain factors were measured for VoWiFi due to the Rohde & Schwarz CMW500, hosting a calibrated audio board. The gains used to measure VoWiFi are set to 100.

| Firmware | License Keys | Software Name |
|-------------------|--------------|-----------------------|
| V3.7.40 for WLAN | KS650 | WLAN A/B/G SIG BASIC |
| | KS651 | WLAN N SIG BASIC |
| | KA100 | IP APPL ENABLING IPv4 |
| | KA150 | IP APPL ENABLING IPv6 |
| V3.7.20 for Audio | KAA20 | IP APPL IMS BASIC |
| | KM050 | DATA APPL MEAS |
| | KS104 | EVS SPEECH CODEC |

10.2 Codec Configuration

An investigation was performed to determine the audio codec configuration to be used for testing. The EVS Primary NB 5.9kbps setting was used for the audio codec on the CMW500 for VoWiFi over IMS T-coil testing. See below table for comparisons between different codecs and codec data rates:

Table 10-1 AMR Codec Investigation – VoWiFi over IMS

| Codec Setting | WB AMR 23.85kbps | WB AMR 6.60kbps | NB AMR 12.2kbps | NB AMR 4.75kbps | Orientation | Band/BW | Channel |
|--------------------|---------------------|--------------------|--------------------|--------------------|-------------|-------------------|---------|
| ABM1 (dBA/m) | 15.01 | 14.48 | 14.53 | 13.31 | Z(axial) | 2.4GHz 802.11b | 6 |
| Frequency Response | PASS | PASS | PASS | PASS | | | |
| SNR (dB) | 57.56 | 56.80 | 57.60 | 69.73 | | | |

Table 10-2 EVS Codec Investigation – VoWiFi over IMS

| Codec Setting | EVS Primary WB 13.2kbps | EVS Primary WB 5.9kbps | EVS Primary NB 13.2kbps | EVS Primary NB 5.9kbps | Orientation | Band /BW | Channel |
|-----------------------|----------------------------|---------------------------|----------------------------|---------------------------|-------------|-------------------|---------|
| ABM1 (dBA/m) | 9.34 | 8.73 | 7.28 | 8.61 | Z(axial) | 2.4GHz 802.11b | 6 |
| Frequency Response | PASS | PASS | PASS | PASS | | | |
| SNR (dB) | 55.24 | 53.01 | 54.16 | 52.69 | | | |

10.3 Radio Configuration

An investigation was performed on all applicable data rates and modulations to determine the radio configuration to be used for testing. See below table for comparisons between different radio configurations in each 802.11 standard:

Table 10-3 802.11b SNR by Radio Configuration

| Mode | Channel | Modulation | Data Rate [Mbps] | ABM1 [dB(A/m)] | SNR [dB] |
|---------|---------|------------|------------------|----------------|----------|
| 802.11b | 6 | DSSS | 1 | 8.61 | 52.69 |
| 802.11b | 6 | DSSS | 2 | 9.28 | 57.34 |
| 802.11b | 6 | CCK | 5.5 | 1.21 | 58.43 |
| 802.11b | 6 | CCK | 11 | 7.35 | 64.28 |

Table 10-4 802.11g/a SNR by Radio Configuration

| Mode | Channel | Modulation | Data Rate [Mbps] | ABM1 [dB(A/m)] | SNR [dB] |
|---------|---------|------------|------------------|----------------|----------|
| 802.11g | 6 | BPSK | 6 | 8.64 | 63.77 |
| 802.11g | 6 | BPSK | 9 | 10.24 | 65.29 |
| 802.11g | 6 | QPSK | 12 | 10.26 | 67.33 |
| 802.11g | 6 | QPSK | 18 | 6.94 | 68.93 |
| 802.11g | 6 | 16-QAM | 24 | 7.72 | 64.87 |
| 802.11g | 6 | 16-QAM | 36 | 7.76 | 63.36 |
| 802.11g | 6 | 64-QAM | 48 | 7.39 | 68.62 |
| 802.11g | 6 | 64-QAM | 54 | 10.1 | 66.71 |

Table 10-5 802.11n 20MHz BW SNR by Radio Configuration

| Mode | Bandwidth [MHz] | Channel | Modulation | Data Rate [Mbps] | ABM1 [dB(A/m)] | SNR [dB] |
|---------|-----------------|---------|------------|------------------|----------------|----------|
| 802.11n | 20 | 6 | BPSK | 6.5 | 14.95 | 57.68 |
| 802.11n | 20 | 6 | QPSK | 13 | 13.24 | 57.03 |
| 802.11n | 20 | 6 | QPSK | 19.5 | 8.74 | 58.18 |
| 802.11n | 20 | 6 | 16-QAM | 26 | 9.07 | 53.51 |
| 802.11n | 20 | 6 | 16-QAM | 39 | 7.12 | 58.52 |
| 802.11n | 20 | 6 | 64-QAM | 52 | 13.61 | 54.28 |
| 802.11n | 20 | 6 | 64-QAM | 58.5 | 7.43 | 58.5 |
| 802.11n | 20 | 6 | 64-QAM | 65 | 12.96 | 56.73 |

Table 10-6 802.11n 40MHz BW SNR by Radio Configuration

| Mode | Bandwidth [MHz] | Channel | Modulation | Data Rate [Mbps] | ABM1 [dB(A/m)] | SNR [dB] |
|---------|-----------------|---------|------------|------------------|----------------|----------|
| 802.11n | 40 | 6 | BPSK | 13.5 | 4.41 | 60.06 |
| 802.11n | 40 | 6 | QPSK | 27 | 8.61 | 63.34 |
| 802.11n | 40 | 6 | QPSK | 40.5 | 9.76 | 66.15 |
| 802.11n | 40 | 6 | 16-QAM | 54 | 6.83 | 68.54 |
| 802.11n | 40 | 6 | 16-QAM | 81 | 11.91 | 63.37 |
| 802.11n | 40 | 6 | 64-QAM | 108 | 11.44 | 61.88 |
| 802.11n | 40 | 6 | 64-QAM | 121.5 | 7.03 | 68.86 |
| 802.11n | 40 | 6 | 64-QAM | 135 | 14.3 | 70.71 |

11 HAC T-Coil TEST DATA SUMMARY

11.1 Test Results for 2/3G

Table 11-1 Test results for 2/3G

| Probe Position | Band | Ch. | Measurement Position (x mm, y mm) | ABM1 (dB A/m) | SNR (dB) | T category |
|----------------|-----------|------|-----------------------------------|---------------|----------|------------|
| transverse | GSM 850 | 190 | -2.9,-3.8 | 0.48 | 50.20 | T4 |
| | GSM 1900 | 661 | -1.7,21.7 | 4.70 | 52.12 | T4 |
| | WCDMA850 | 4182 | 0.8,20.6 | 6.33 | 59.16 | T4 |
| | WCDMA1900 | 9400 | 0.4,21.7 | 5.80 | 58.06 | T4 |
| | WCDMA1700 | 1412 | 0.1,19.7 | 6.72 | 59.37 | T4 |
| perpendicular | GSM 850 | 190 | -0.8,13.3 | 12.69 | 50.38 | T4 |
| | GSM 1900 | 661 | -1.2,8.7 | 10.67 | 53.27 | T4 |
| | WCDMA850 | 4182 | 1.2,10.4 | 11.53 | 56.82 | T4 |
| | WCDMA1900 | 9400 | 0.8,14.2 | 13.52 | 56.29 | T4 |
| | WCDMA1700 | 1412 | 0.3,13.4 | 12.54 | 57.11 | T4 |

Note:

1. Bluetooth and WiFi function is turn off and microphone is muted.
2. Signal strength measurement scan plots are presented in Annex B.
3. The volume is adjusted to maximum level during T-Coil testing.

11.2 Test Results for LTE

Table 11-2 Test results for LTE

| Probe Position | Band | Ch. | Bandwidth | Measurement Position (x mm, y mm) | ABM1 (dB A/m) | SNR (dB) | Category T ? |
|-----------------|----------------|--------|-----------|-----------------------------------|---------------|----------|--------------|
| Transverse y | LTE B12 | 23095 | 10M | -3.7,7.9 | 1.09 | 56.60 | T4 |
| | LTE B25 | 26365 | 20M | -0.4,7.9 | 2.71 | 54.92 | T4 |
| | LTE B26 | 26865 | 10M | -1.2,6.9 | 2.52 | 55.67 | T4 |
| | LTE B66 | 132322 | 20M | -2.1,7.9 | 1.52 | 54.14 | T4 |
| | LTE B71 | 133322 | 20M | 3.3,7.5 | 2.97 | 55.56 | T4 |
| | LTE B41 (Power | 40620 | 20M | -2.9,7.1 | 1.57 | 54.02 | T4 |
| | LTE B41 (Power | 40620 | 20M | -3.7,5.8 | 0.97 | 56.27 | T4 |
| Perpendicular z | LTE B12 | 23095 | 10M | 1.7,12.9 | 8.94 | 51.69 | T4 |
| | LTE B25 | 26365 | 20M | -0.4,12.5 | 7.88 | 49.59 | T4 |
| | LTE B26 | 26865 | 10M | -0.5,10.7 | 9.61 | 54.66 | T4 |
| | LTE B66 | 132322 | 20M | 3.8,16.2 | 8.35 | 61.84 | T4 |
| | LTE B71 | 133322 | 20M | 1.7,16.2 | 10.13 | 62.58 | T4 |

| | | | | | | | |
|--|-----------------------|-------|-----|----------|------|-------|-----------|
| | LTE B41 (Power | 40620 | 20M | 0.4,15.4 | 9.93 | 50.80 | T4 |
| | LTE B41 (Power | 40620 | 20M | 2.1,16.2 | 9.54 | 51.42 | T4 |

Note:

1. Bluetooth and WiFi function is turn off and microphone is muted.
2. The worse case of each band for signal strength measurement scan plots are presented in Annex B.
3. The volume is adjusted to maximum level during T-Coil testing.
4. For LTE Band 41, UL-DL Configuration 1 was used to evaluate Power Class 2, UL-DL Configuration 0 was used to evaluate Power Class 3

11.3 Test Results for WiFi

Table 11-3 Test results for WiFi

| Probe Position | Mode | Ch. | Bandwidth | Measurement Position (x mm, y mm) | ABM1 (dB A/m) | SNR (dB) | Category T ? |
|------------------------|----------------|-----|-----------|-----------------------------------|---------------|----------|--------------|
| Transverse y | 802.11b | 6 | 20M | 0.4,7.9 | 2.18 | 55.76 | T4 |
| | 802.11g | 6 | 20M | 0,5.4 | 2.14 | 58.67 | T4 |
| | 802.11n | 6 | 20M | 0.4,7.9 | 2.50 | 56.03 | T4 |
| | 802.11n | 6 | 40M | -2.1,7.9 | 8.28 | 62.52 | T4 |
| Perpendicular z | 802.11b | 6 | 20M | 0.4,15.8 | 8.61 | 52.69 | T4 |
| | 802.11g | 6 | 20M | -0.4,12.9 | 7.76 | 63.36 | T4 |
| | 802.11n | 6 | 20M | -1.2,12.9 | 9.07 | 53.51 | T4 |
| | 802.11n | 6 | 40M | -8.3,15.8 | 4.41 | 60.06 | T4 |

Note:

1. Bluetooth function is turn off and microphone is muted.
2. The worse case of each mode for signal strength measurement scan plots are presented in Annex B.
3. The volume is adjusted to maximum level during T-Coil testing.

11.4 Total Measurement Conclusion

| Probe Position | Frequency Band(MHz) | ABM1 | Frequency Response | T Category |
|----------------|---------------------|------|--------------------|------------|
| Transverse | GSM 850 | Pass | / | T4 |
| | GSM 1900 | Pass | | T4 |
| | WCDMA850 | Pass | | T4 |
| | WCDMA1900 | Pass | | T4 |
| | WCDMA1700 | Pass | | T4 |
| | LTE B12 | Pass | | T4 |
| | LTE B25 | Pass | | T4 |
| | LTE B26 | Pass | | T4 |
| | LTE B66 | Pass | | T4 |
| | LTE B71 | Pass | | T4 |
| | LTE B41 | Pass | | T4 |
| | WiFi 2.4G | Pass | | T4 |
| Perpendicular | GSM 850 | Pass | Pass | T4 |
| | GSM 1900 | Pass | Pass | T4 |
| | WCDMA850 | Pass | Pass | T4 |
| | WCDMA1900 | Pass | Pass | T4 |
| | WCDMA1700 | Pass | Pass | T4 |
| | LTE B12 | Pass | Pass | T4 |
| | LTE B25 | Pass | Pass | T4 |
| | LTE B26 | Pass | Pass | T4 |
| | LTE B66 | Pass | Pass | T4 |
| | LTE B71 | Pass | Pass | T4 |
| | LTE B41 | Pass | Pass | T4 |
| | WiFi 2.4G | Pass | Pass | T4 |

12 MEASUREMENT UNCERTAINTY

| No. | Error source | Type | Uncertainty Value a_i (%) | Prob. Dist. | Div. | ABM1 c_i | ABM2 c_i | Std. Unc. ABM1 u_i (%) | Std. Unc. ABM2 u_i (%) |
|--------------------------|--------------------------------------|------|--------------------------------|-------------|------------|-------------------|---------------|-----------------------------|-----------------------------|
| 1 | System Repeatability | A | 0.016 | N | 1 | 1 | 1 | 0.016 | 0.016 |
| Probe Sensitivity | | | | | | | | | |
| 2 | Reference Level | B | 3.0 | R | $\sqrt{3}$ | 1 | 1 | 3.0 | 3.0 |
| 3 | AMCC Geometry | B | 0.4 | R | $\sqrt{3}$ | 1 | 1 | 0.2 | 0.2 |
| 4 | AMCC Current | B | 0.6 | R | $\sqrt{3}$ | 1 | 1 | 0.4 | 0.4 |
| 5 | Probe Positioning during Calibration | B | 0.1 | R | $\sqrt{3}$ | 1 | 1 | 0.1 | 0.1 |
| 6 | Noise Contribution | B | 0.7 | R | $\sqrt{3}$ | $\frac{0.014}{3}$ | 1 | 0.0 | 0.4 |
| 7 | Frequency Slope | B | 5.9 | R | $\sqrt{3}$ | 0.1 | 1 | 0.3 | 3.5 |
| Probe System | | | | | | | | | |
| 8 | Repeatability / Drift | B | 1.0 | R | $\sqrt{3}$ | 1 | 1 | 0.6 | 0.6 |
| 9 | Linearity / Dynamic Range | B | 0.6 | N | 1 | 1 | 1 | 0.4 | 0.4 |
| 10 | Acoustic Noise | B | 1.0 | R | $\sqrt{3}$ | 0.1 | 1 | 0.1 | 0.6 |
| 11 | Probe Angle | B | 2.3 | R | $\sqrt{3}$ | 1 | 1 | 1.4 | 1.4 |
| 12 | Spectral Processing | B | 0.9 | R | $\sqrt{3}$ | 1 | 1 | 0.5 | 0.5 |
| 13 | Integration Time | B | 0.6 | N | 1 | 1 | 5 | 0.6 | 3.0 |
| 14 | Field Distribution | B | 0.2 | R | $\sqrt{3}$ | 1 | 1 | 0.1 | 0.1 |
| Test Signal | | | | | | | | | |
| 15 | Ref.Signal Spectral Response | B | 0.6 | R | $\sqrt{3}$ | 0 | 1 | 0.0 | 0.4 |
| Positioning | | | | | | | | | |
| 16 | Probe Positioning | B | 1.9 | R | $\sqrt{3}$ | 1 | 1 | 1.1 | 1.1 |
| 17 | Phantom Thickness | B | 0.9 | R | $\sqrt{3}$ | 1 | 1 | 0.5 | 0.5 |

| | | | | | | | | | |
|---------------------------------------|-----------------------|--|-----|---|------------|---|-----|-----|------|
| 18 | DUT Positioning | B | 1.9 | R | $\sqrt{3}$ | 1 | 1 | 1.1 | 1.1 |
| External Contributions | | | | | | | | | |
| 19 | RF Interference | B | 0.0 | R | $\sqrt{3}$ | 1 | 0.3 | 0.0 | 0.0 |
| 20 | Test Signal Variation | B | 2.0 | R | $\sqrt{3}$ | 1 | 1 | 1.2 | 1.2 |
| Combined Std. Uncertainty (ABM Field) | | $u_c = \sqrt{\sum_{i=1}^{20} c_i^2 u_i^2}$ | | | | | 4.1 | | 6.1 |
| Expanded Std. Uncertainty | | $u_e = 2u_c$ | | N | $k = 2$ | | 8.2 | | 12.2 |

13 MAIN TEST INSTRUMENTS

List of Main Instruments

| No. | Name | Type | Serial Number | Calibration Date | Valid Period |
|-----|--------------------------------------|---------------------------|---------------|------------------|--------------|
| 01 | Audio Magnetic 1D Field Probe | AM1DV2 | 1064 | July 23, 2020 | One year |
| 02 | Audio Magnetic Calibration Coil | AMCC | 1064 | NCR | NCR |
| 03 | Audio Measuring Instrument | AMMI | 1044 | NCR | NCR |
| 04 | HAC Test Arch | N/A | 1014 | NCR | NCR |
| 05 | DAE | SPEAG DAE4 | 1555 | August 25, 2020 | One year |
| 06 | Software | DASY5 V5.0 Build 119.9 | N/A | NCR | NCR |
| 07 | Software | SEMCAD V13.2 Build 87 | N/A | NCR | NCR |
| 08 | Universal Radio Communication Tester | CMW 500 | 166370 | June 28, 2020 | One year |

END OF REPORT BODY

ANNEX A TEST LAYOUT



Picture A1: HAC T-Coil System Layout



ANNEX B TEST PLOTS

T-Coil GSM 850 Transverse

Date: 2021-2-22

Electronics: DAE4 Sn1555

Medium: Air

Medium parameters used: $\sigma = 0$ mho/m, $\epsilon_r = 1$; $\rho = 1$ kg/m³

Ambient Temperature: 22.5°C

Communication System: GSM 850; Frequency: 836.6 MHz; Duty Cycle: 1:1

Probe: AM1DV2 - 1064;

T-Coil scan (scan for ANSI C63.19-2007 & 2011 compliance)/General

Scans/y (transversal) 4.2mm 50 x 50/ABM Interpolated Signal(x, y, z)

(121x121x1): Interpolated grid: dx=1.000 mm, dy=1.000 mm

Signal Type: Audio File (.wav) 48k_voice_1kHz_1s.wav

Output Gain: 37.15

Measure Window Start: 300ms

Measure Window Length: 1000ms

BWC applied: 0.16 dB

Device Reference Point: 0, 0, -6.3 mm

Cursor:

ABM1 = 4.88 dBA/m

BWC Factor = 0.16 dB

Location: -0.8, 22.1, 3.7 mm

T-Coil scan (scan for ANSI C63.19-2007 & 2011 compliance)/General

Scans/y (transversal) 4.2mm 50 x 50/ABM Interpolated SNR(x, y, z)

(121x121x1): Interpolated grid: dx=1.000 mm, dy=1.000 mm

Signal Type: Audio File (.wav) 48k_voice_1kHz_1s.wav

Output Gain: 37.15

Measure Window Start: 300ms

Measure Window Length: 1000ms

BWC applied: 0.16 dB

Device Reference Point: 0, 0, -6.3 mm

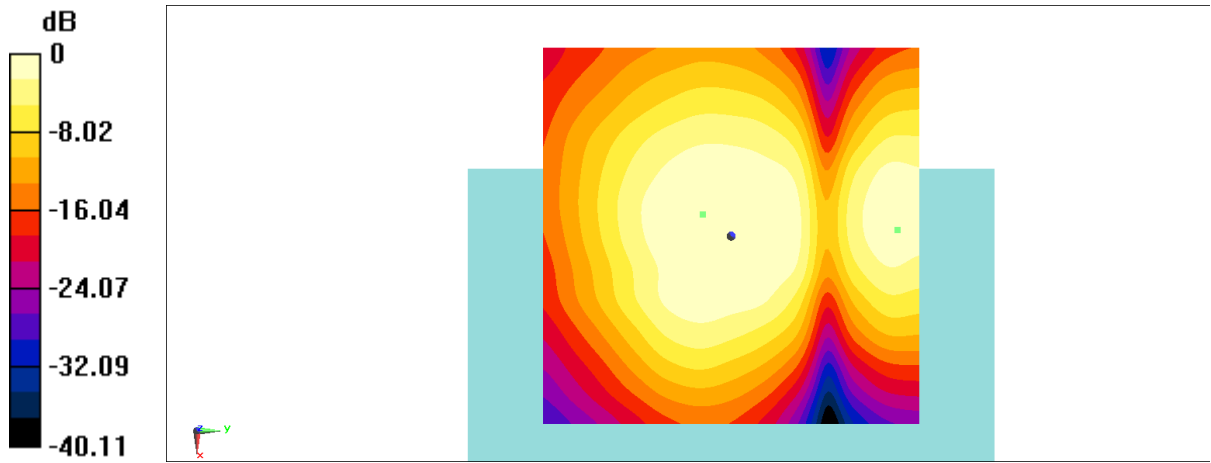
Cursor:

ABM1/ABM2 = 50.20 dB

ABM1 comp = 0.48 dBA/m

BWC Factor = 0.16 dB

Location: -2.9, -3.8, 3.7 mm



0 dB = 1.753 A/m = 4.88 dBA/m

Fig B.1 T-Coil GSM 850

**T-Coil GSM 850 Perpendicular**

Date: 2021-2-22

Electronics: DAE4 Sn1555

Medium: Air

Medium parameters used: $\sigma = 0$ mho/m, $\epsilon_r = 1$; $\rho = 1$ kg/m³

Ambient Temperature: 22.5°C

Communication System: GSM 850; Frequency: 836.6 MHz; Duty Cycle: 1:8.3

Probe: AM1DV2 - 1064;

T-Coil scan (scan for ANSI C63.19-2007 & 2011 compliance)/General

Scans/z (axial) 4.2mm 50 x 50/ABM Interpolated Signal(x, y, z)

(121x121x1): Interpolated grid: dx=1.000 mm, dy=1.000 mm

Signal Type: Audio File (.wav) 48k_voice_1kHz_1s.wav

Output Gain: 37.15

Measure Window Start: 300ms

Measure Window Length: 1000ms

BWC applied: 0.16 dB

Device Reference Point: 0, 0, -6.3 mm

Cursor:

ABM1 = 12.70 dBA/m

BWC Factor = 0.16 dB

Location: -0.4, 13.3, 3.7 mm

T-Coil scan (scan for ANSI C63.19-2007 & 2011 compliance)/General

Scans/z (axial) 4.2mm 50 x 50/ABM Interpolated SNR(x, y, z)

(121x121x1): Interpolated grid: dx=1.000 mm, dy=1.000 mm

Signal Type: Audio File (.wav) 48k_voice_1kHz_1s.wav

Output Gain: 37.15

Measure Window Start: 300ms

Measure Window Length: 1000ms

BWC applied: 0.16 dB

Device Reference Point: 0, 0, -6.3 mm

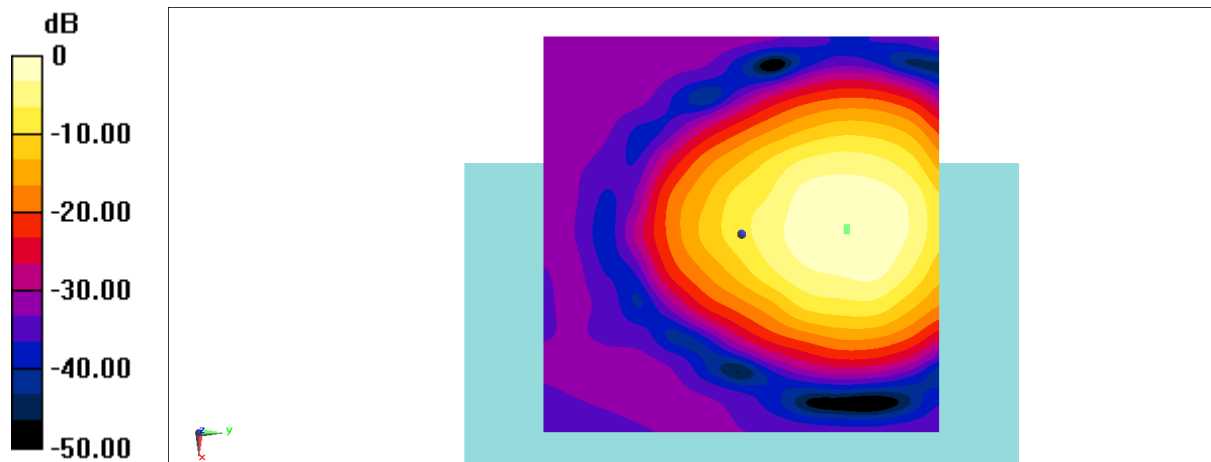
Cursor:

ABM1/ABM2 = 50.38 dB

ABM1 comp = 12.69 dBA/m

BWC Factor = 0.16 dB

Location: -0.8, 13.3, 3.7 mm



0 dB = 4.316 A/m = 12.70 dBA/m

Fig B.2 T-Coil GSM 850

**T-Coil LTE B66 Transverse**

Date: 2021-2-24

Electronics: DAE4 Sn1555

Medium: Air

Medium parameters used: $\sigma = 0$ mho/m, $\epsilon_r = 1$; $\rho = 1$ kg/m³

Ambient Temperature: 22.5°C

Communication System: LTE B66; Frequency: 1745 MHz; Duty Cycle: 1:1

Probe: AM1DV2 - 1064;

T-Coil scan (scan for ANSI C63.19-2007 & 2011 compliance)/General

Scans/y (transversal) 4.2mm 50 x 50/ABM Interpolated Signal(x, y, z)

(121x121x1): Interpolated grid: dx=1.000 mm, dy=1.000 mm

Signal Type: Audio File (.wav) 48k_voice_1kHz_1s.wav

Output Gain: 100

Measure Window Start: 300ms

Measure Window Length: 1000ms

BWC applied: 0.16 dB

Device Reference Point: 0, 0, -6.3 mm

Cursor:

ABM1 = 1.60 dBA/m

BWC Factor = 0.16 dB

Location: -0.8, 7.9, 3.7 mm

T-Coil scan (scan for ANSI C63.19-2007 & 2011 compliance)/General

Scans/y (transversal) 4.2mm 50 x 50/ABM Interpolated SNR(x, y, z)

(121x121x1): Interpolated grid: dx=1.000 mm, dy=1.000 mm

Signal Type: Audio File (.wav) 48k_voice_1kHz_1s.wav

Output Gain: 100

Measure Window Start: 300ms

Measure Window Length: 1000ms

BWC applied: 0.16 dB

Device Reference Point: 0, 0, -6.3 mm

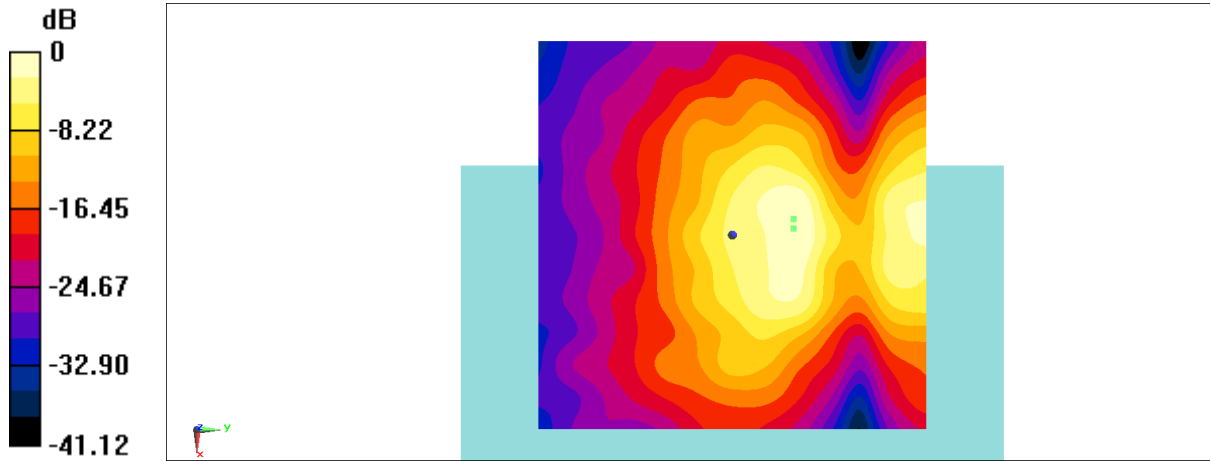
Cursor:

ABM1/ABM2 = 54.14 dB

ABM1 comp = 1.52 dBA/m

BWC Factor = 0.16 dB

Location: -2.1, 7.9, 3.7 mm



0 dB = 1.202 A/m = 1.60 dBA/m

Fig B.3 T-Coil LTE B66

**T-Coil LTE B25 Perpendicular**

Date: 2021-2-23

Electronics: DAE4 Sn1555

Medium: Air

Medium parameters used: $\sigma = 0$ mho/m, $\epsilon_r = 1$; $\rho = 1$ kg/m³

Ambient Temperature: 22.5°C

Communication System: LTE B25; Frequency: 1882.5 MHz; Duty Cycle: 1:1

Probe: AM1DV2 - 1064;

T-Coil scan (scan for ANSI C63.19-2007 & 2011 compliance)/General

Scans/z (axial) 4.2mm 50 x 50 16QAM/ABM Interpolated Signal(x, y, z)

(121x121x1): Interpolated grid: dx=1.000 mm, dy=1.000 mm

Signal Type: Audio File (.wav) 48k_voice_1kHz_1s.wav

Output Gain: 100

Measure Window Start: 300ms

Measure Window Length: 1000ms

BWC applied: 0.16 dB

Device Reference Point: 0, 0, -6.3 mm

Cursor:

ABM1 = 7.88 dBA/m

BWC Factor = 0.16 dB

Location: -0.4, 12.5, 3.7 mm

T-Coil scan (scan for ANSI C63.19-2007 & 2011 compliance)/General

Scans/z (axial) 4.2mm 50 x 50 16QAM/ABM Interpolated SNR(x, y, z)

(121x121x1): Interpolated grid: dx=1.000 mm, dy=1.000 mm

Signal Type: Audio File (.wav) 48k_voice_1kHz_1s.wav

Output Gain: 100

Measure Window Start: 300ms

Measure Window Length: 1000ms

BWC applied: 0.16 dB

Device Reference Point: 0, 0, -6.3 mm

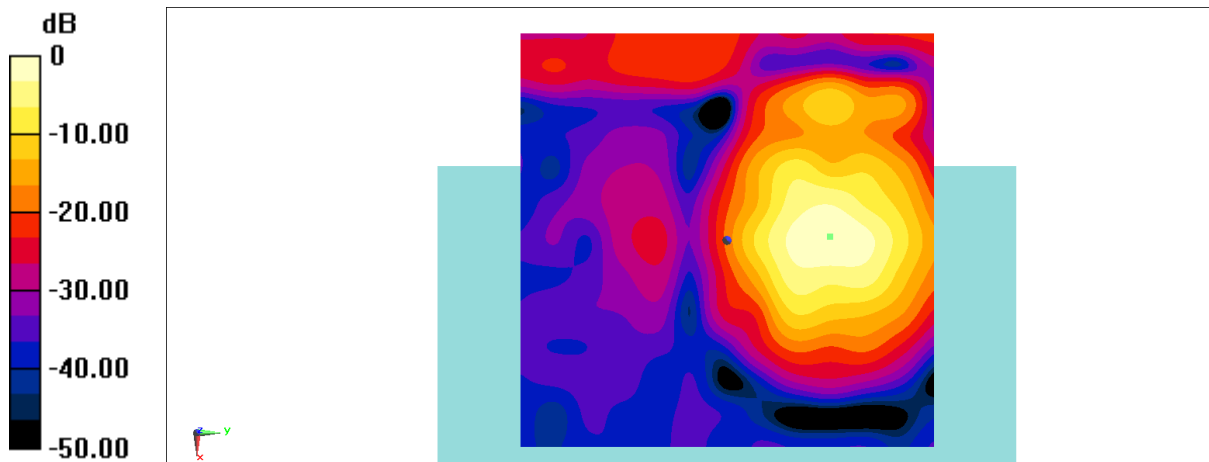
Cursor:

ABM1/ABM2 = 49.59 dB

ABM1 comp = 7.88 dBA/m

BWC Factor = 0.16 dB

Location: -0.4, 12.5, 3.7 mm



0 dB = 2.476 A/m = 7.88 dBA/m

Fig B.4 T-Coil LTE B25

**T-Coil LTE B41 Power Class 2 Transverse**

Date: 2021-2-26

Electronics: DAE4 Sn1555

Medium: Air

Medium parameters used: $\sigma = 0$ mho/m, $\epsilon_r = 1$; $\rho = 1$ kg/m³

Ambient Temperature: 22.5°C

Communication System: LTE B41; Frequency: 2593 MHz; Duty Cycle: 1:2.309

Probe: AM1DV2 - 1064;

T-Coil scan (scan for ANSI C63.19-2007 & 2011 compliance)/General

Scans/y (transversal) 4.2mm 50 x 50/ABM Interpolated Signal(x, y, z)

(121x121x1): Interpolated grid: dx=1.000 mm, dy=1.000 mm

Signal Type: Audio File (.wav) 48k_voice_1kHz_1s.wav

Output Gain: 100

Measure Window Start: 300ms

Measure Window Length: 1000ms

BWC applied: 0.16 dB

Device Reference Point: 0, 0, -6.3 mm

Cursor:

ABM1 = 1.57 dBA/m

BWC Factor = 0.16 dB

Location: -2.9, 7.1, 3.7 mm

T-Coil scan (scan for ANSI C63.19-2007 & 2011 compliance)/General

Scans/y (transversal) 4.2mm 50 x 50/ABM Interpolated SNR(x, y, z)

(121x121x1): Interpolated grid: dx=1.000 mm, dy=1.000 mm

Signal Type: Audio File (.wav) 48k_voice_1kHz_1s.wav

Output Gain: 100

Measure Window Start: 300ms

Measure Window Length: 1000ms

BWC applied: 0.16 dB

Device Reference Point: 0, 0, -6.3 mm

Cursor:

ABM1/ABM2 = 54.02 dB

ABM1 comp = 1.57 dBA/m

BWC Factor = 0.16 dB

Location: -2.9, 7.1, 3.7 mm

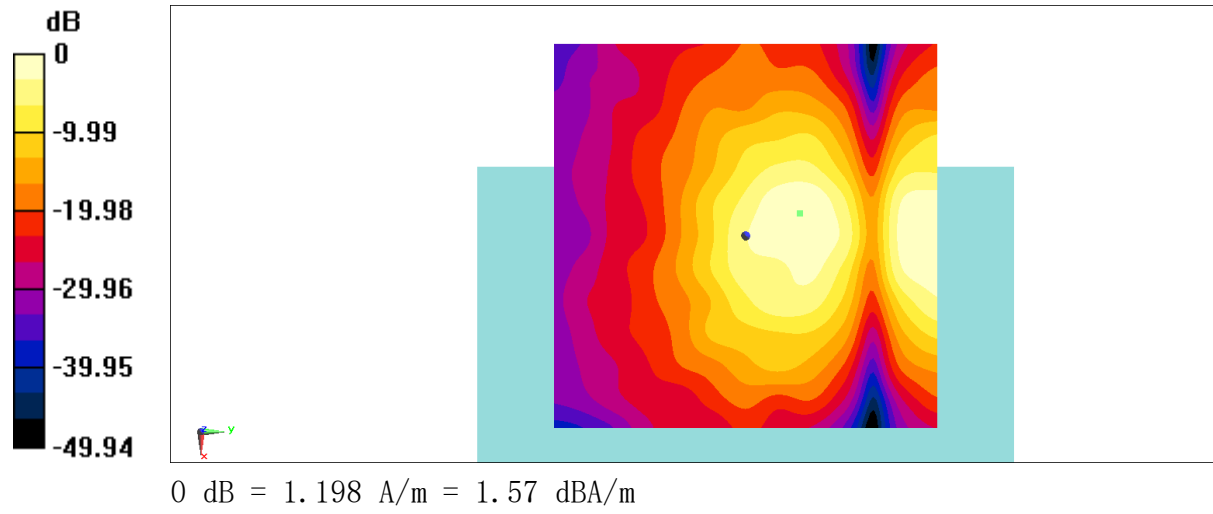


Fig B.5 T-Coil LTE B48

**T-Coil LTE B41 Power Class 2 Perpendicular**

Date: 2021-2-26

Electronics: DAE4 Sn1555

Medium: Air

Medium parameters used: $\sigma = 0$ mho/m, $\epsilon_r = 1$; $\rho = 1$ kg/m³

Ambient Temperature: 22.5°C

Communication System: LTE B41; Frequency: 2593 MHz; Duty Cycle: 1:2.309

Probe: AM1DV2 - 1064;

T-Coil scan (scan for ANSI C63.19-2007 & 2011 compliance)/General

Scans/z (axial) 4.2mm 50 x 50 1/ABM Interpolated Signal(x, y, z)

(121x121x1): Interpolated grid: dx=1.000 mm, dy=1.000 mm

Signal Type: Audio File (.wav) 48k_voice_1kHz_1s.wav

Output Gain: 100

Measure Window Start: 300ms

Measure Window Length: 1000ms

BWC applied: 0.16 dB

Device Reference Point: 0, 0, -6.3 mm

Cursor:

ABM1 = 9.93 dBA/m

BWC Factor = 0.16 dB

Location: 0.4, 15.4, 3.7 mm

T-Coil scan (scan for ANSI C63.19-2007 & 2011 compliance)/General

Scans/z (axial) 4.2mm 50 x 50 1/ABM Interpolated SNR(x, y, z)

(121x121x1): Interpolated grid: dx=1.000 mm, dy=1.000 mm

Signal Type: Audio File (.wav) 48k_voice_1kHz_1s.wav

Output Gain: 100

Measure Window Start: 300ms

Measure Window Length: 1000ms

BWC applied: 0.16 dB

Device Reference Point: 0, 0, -6.3 mm

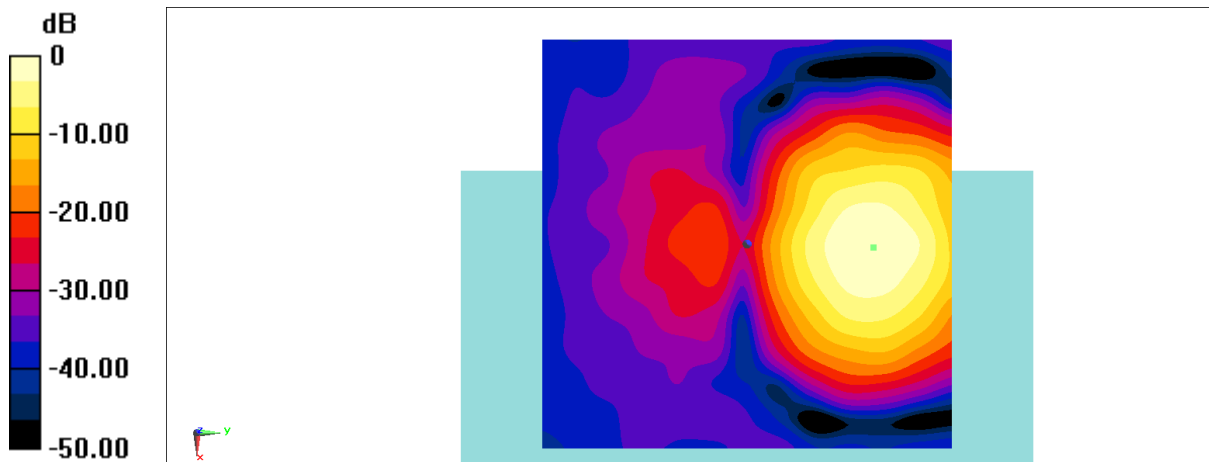
Cursor:

ABM1/ABM2 = 50.80 dB

ABM1 comp = 9.93 dBA/m

BWC Factor = 0.16 dB

Location: 0.4, 15.4, 3.7 mm



0 dB = 3.137 A/m = 9.93 dBA/m

Fig B.6 T-Coil LTE B41

**T-Coil WiFi-2.4G 11b 20M Transverse**

Date: 2021-2-28

Electronics: DAE4 Sn1555

Medium: Air

Medium parameters used: $\sigma = 0$ mho/m, $\epsilon_r = 1$; $\rho = 1$ kg/m³

Ambient Temperature: 22.5°C

Communication System: WiFi-2.4G; Frequency: 2437 MHz; Duty Cycle: 1:1

Probe: AM1DV2 - 1064;

T-Coil scan (scan for ANSI C63.19-2007 & 2011 compliance)/General

Scans/y (transversal) 4.2mm 50 x 50/ABM Interpolated Signal(x, y, z)

(121x121x1): Interpolated grid: dx=1.000 mm, dy=1.000 mm

Signal Type: Audio File (.wav) 48k_voice_1kHz_1s.wav

Output Gain: 100

Measure Window Start: 300ms

Measure Window Length: 1000ms

BWC applied: 0.16 dB

Device Reference Point: 0, 0, -6.3 mm

Cursor:

ABM1 = 2.18 dBA/m

BWC Factor = 0.16 dB

Location: 0.4, 7.9, 3.7 mm

T-Coil scan (scan for ANSI C63.19-2007 & 2011 compliance)/General

Scans/y (transversal) 4.2mm 50 x 50/ABM Interpolated SNR(x, y, z)

(121x121x1): Interpolated grid: dx=1.000 mm, dy=1.000 mm

Signal Type: Audio File (.wav) 48k_voice_1kHz_1s.wav

Output Gain: 100

Measure Window Start: 300ms

Measure Window Length: 1000ms

BWC applied: 0.16 dB

Device Reference Point: 0, 0, -6.3 mm

Cursor:

ABM1/ABM2 = 55.76 dB

ABM1 comp = 2.18 dBA/m

BWC Factor = 0.16 dB

Location: 0.4, 7.9, 3.7 mm

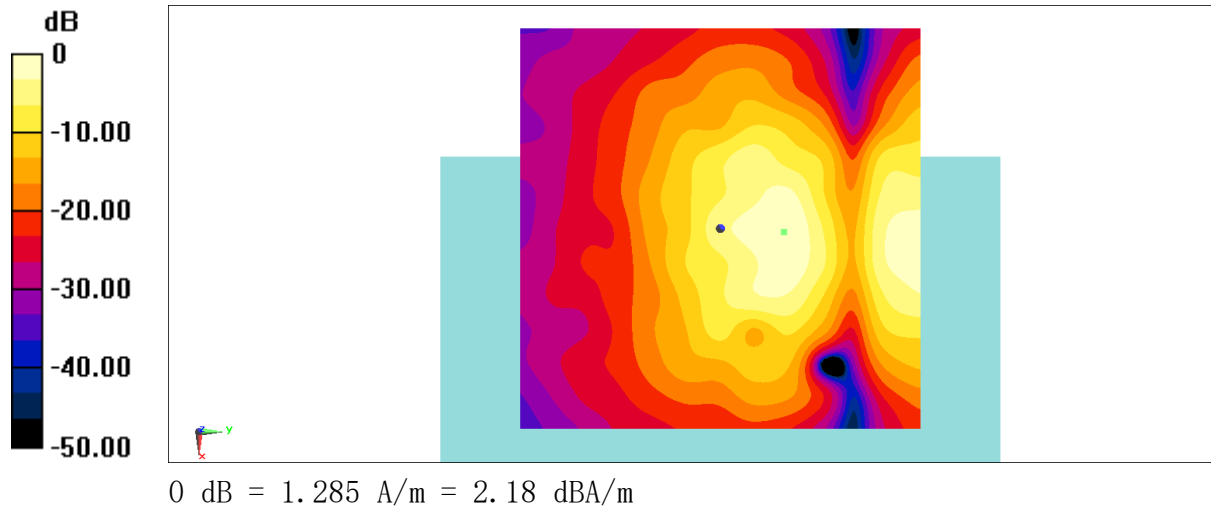


Fig B.7 T-Coil WiFi-2.4G

**T-Coil WiFi-2.4G 11b Perpendicular**

Date: 2021-2-28

Electronics: DAE4 Sn1555

Medium: Air

Medium parameters used: $\sigma = 0$ mho/m, $\epsilon_r = 1$; $\rho = 1$ kg/m³

Ambient Temperature: 22.5°C

Communication System: WiFi-2.4G; Frequency: 2437 MHz; Duty Cycle: 1:1

Probe: AM1DV2 - 1064;

T-Coil scan (scan for ANSI C63.19-2007 & 2011 compliance)/General

Scans/z (axial) 4.2mm 50 x 50 EVS NB5.9/ABM Interpolated

Signal(x, y, z) (121x121x1): Interpolated grid: dx=1.000 mm, dy=1.000 mm

Signal Type: Audio File (.wav) 48k_voice_1kHz_1s.wav

Output Gain: 100

Measure Window Start: 300ms

Measure Window Length: 1000ms

BWC applied: 0.16 dB

Device Reference Point: 0, 0, -6.3 mm

Cursor:

ABM1 = 8.62 dBA/m

BWC Factor = 0.16 dB

Location: 0.8, 15.8, 3.7 mm

T-Coil scan (scan for ANSI C63.19-2007 & 2011 compliance)/General

Scans/z (axial) 4.2mm 50 x 50 EVS NB5.9/ABM Interpolated

SNR(x, y, z) (121x121x1): Interpolated grid: dx=1.000 mm, dy=1.000 mm

Signal Type: Audio File (.wav) 48k_voice_1kHz_1s.wav

Output Gain: 100

Measure Window Start: 300ms

Measure Window Length: 1000ms

BWC applied: 0.16 dB

Device Reference Point: 0, 0, -6.3 mm

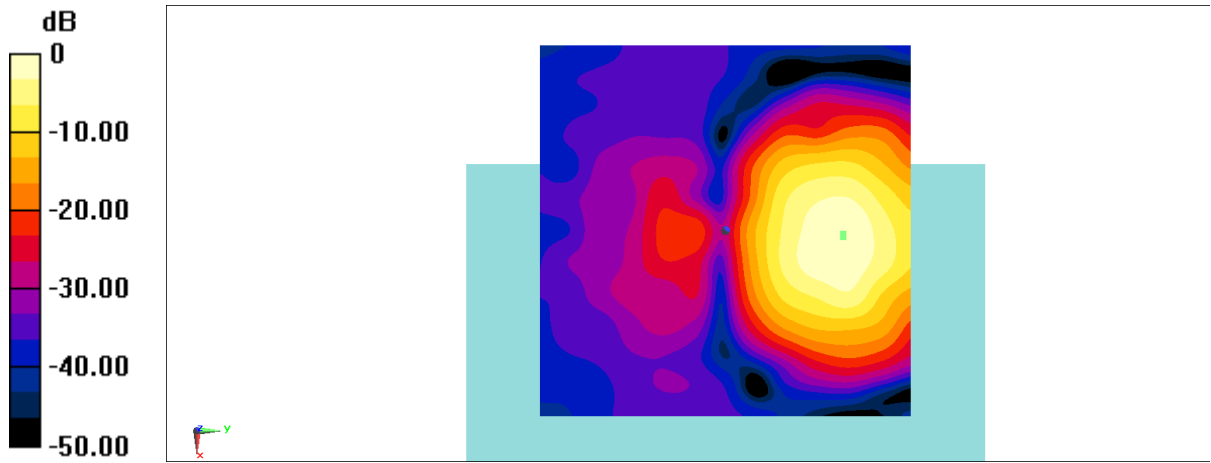
Cursor:

ABM1/ABM2 = 52.69 dB

ABM1 comp = 8.61 dBA/m

BWC Factor = 0.16 dB

Location: 0.4, 15.8, 3.7 mm



0 dB = 2.696 A/m = 8.62 dBA/m

Fig B.8 T-Coil WiFi-2.4G

ANNEX C FREQUENCY REPOSE CURVES

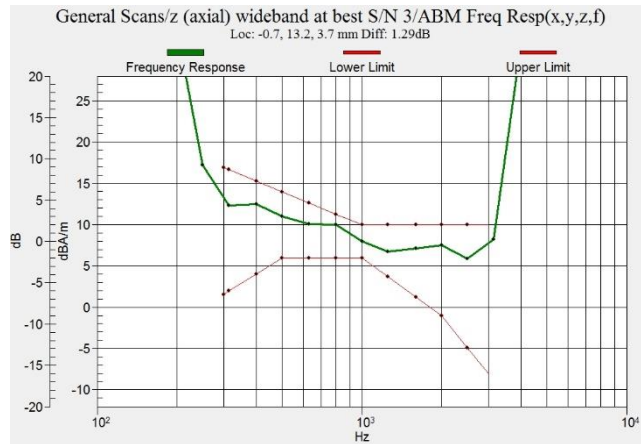


Figure C.1 Frequency Response of GSM 850

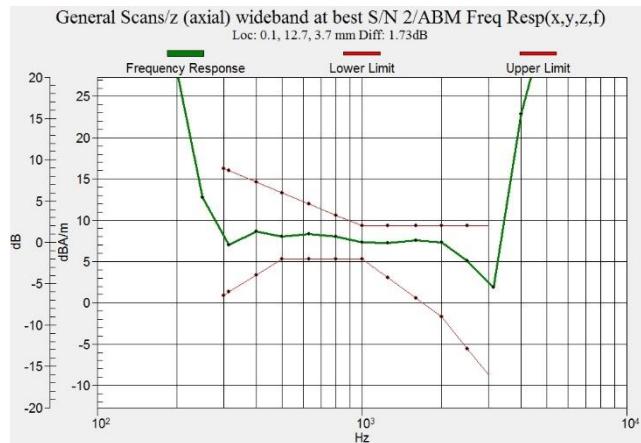


Figure C.2 Frequency Response of LTE B25

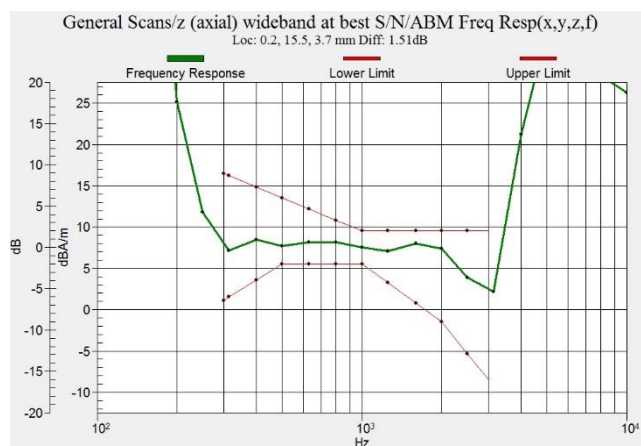


Figure C.3 Frequency Response of LTE B41 PC2

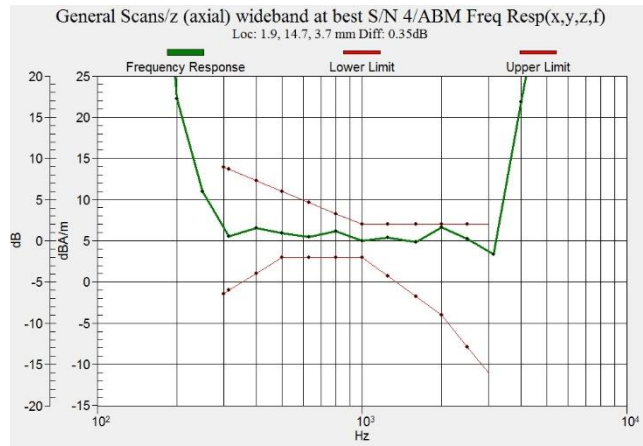


Figure C.4 Frequency Response of WiFi-2.4G

ANNEX D PROBE CALIBRATION CERTIFICATE

Calibration Laboratory of
Schmid & Partner
Engineering AG
 Zeughausstrasse 43, 8004 Zurich, Switzerland



S Schweizerischer Kalibrierdienst
C Service suisse d'étalonnage
S Servizio svizzero di taratura
S Swiss Calibration Service

Accredited by the Swiss Accreditation Service (SAS)
 The Swiss Accreditation Service is one of the signatories to the EA
 Multilateral Agreement for the recognition of calibration certificates

Accreditation No.: **SCS 0108**

Client **CTTL-BJ (Auden)**

Certificate No: **AM1DV2-1064_Jul20**

CALIBRATION CERTIFICATE

Object **AM1DV2 - SN: 1064**
 Calibration procedure(s) **QA CAL-24.v4
 Calibration procedure for AM1D magnetic field probes and TMFS in the
 audio range**
 Calibration date: **July 23, 2020**

This calibration certificate documents the traceability to national standards, which realize the physical units of measurements (SI).
 The measurements and the uncertainties with confidence probability are given on the following pages and are part of the certificate.

All calibrations have been conducted in the closed laboratory facility: environment temperature (22 ± 3)°C and humidity < 70%.

Calibration Equipment used (M&TE critical for calibration)

| Primary Standards | ID # | Cal Date (Certificate No.) | Scheduled Calibration |
|---------------------------------|-------------|-----------------------------------|-----------------------|
| Keithley Multimeter Type 2001 | SN: 0810278 | 03-Sep-19 (No. 25949) | Sep-20 |
| Reference Probe AM1DV2 | SN: 1008 | 10-Dec-19 (No. AM1DV2-1008_Dec19) | Dec-20 |
| DAE4 | SN: 781 | 27-Dec-19 (No. DAE4-781_Dec19) | Dec-20 |
| Secondary Standards | ID # | Check Date (in house) | Scheduled Check |
| AMCC | SN: 1050 | 01-Oct-13 (in house check Oct-17) | Oct-20 |
| AMMI Audio Measuring Instrument | SN: 1062 | 26-Sep-12 (in house check Oct-17) | Oct-20 |

| | Name | Function | Signature |
|----------------|---------------|-----------------------|-----------|
| Calibrated by: | Leif Klysner | Laboratory Technician | |
| Approved by: | Katja Pokovic | Technical Manager | |

Issued: July 23, 2020

This calibration certificate shall not be reproduced except in full without written approval of the laboratory.

References

- [1] ANSI-C63.19-2007
American National Standard for Methods of Measurement of Compatibility between Wireless Communications Devices and Hearing Aids.
- [2] ANSI-C63.19-2011
American National Standard, Methods of Measurement of Compatibility between Wireless Communications Devices and Hearing Aids.
- [3] DASY5 manual, Chapter: Hearing Aid Compatibility (HAC) T-Coil Extension

Description of the AM1D probe

The AM1D Audio Magnetic Field Probe is a fully shielded magnetic field probe for the frequency range from 100 Hz to 20 kHz. The pickup coil is compliant with the dimensional requirements of [1+2]. The probe includes a symmetric low noise amplifier for the signal available at the shielded 3 pin connector at the side. Power is supplied via the same connector (phantom power supply) and monitored via the LED near the connector. The 7 pin connector at the end of the probe does not carry any signals, but determines the angle of the sensor when mounted on the DAE. The probe supports mechanical detection of the surface.

The single sensor in the probe is arranged in a tilt angle allowing measurement of 3 orthogonal field components when rotating the probe by 120° around its axis. It is aligned with the perpendicular component of the field, if the probe axis is tilted nominally 35.3° above the measurement plane, using the connector rotation and sensor angle stated below.

The probe is fully RF shielded when operated with the matching signal cable (shielded) and allows measurement of audio magnetic fields in the close vicinity of RF emitting wireless devices according to [1+2] without additional shielding.

Handling of the item

The probe is manufactured from stainless steel. In order to maintain the performance and calibration of the probe, it must not be opened. The probe is designed for operation in air and shall not be exposed to humidity or liquids. For proper operation of the surface detection and emergency stop functions in a DASY system, the probe must be operated with the special probe cup provided (larger diameter).

Methods Applied and Interpretation of Parameters

- *Coordinate System:* The AM1D probe is mounted in the DASY system for operation with a HAC Test Arch phantom with AMCC Helmholtz calibration coil according to [3], with the tip pointing to “southwest” orientation.
- *Functional Test:* The functional test preceding calibration includes test of Noise level RF immunity (1kHz AM modulated signal). The shield of the probe cable must be well connected. Frequency response verification from 100 Hz to 10 kHz.
- *Connector Rotation:* The connector at the end of the probe does not carry any signals and is used for fixation to the DAE only. The probe is operated in the center of the AMCC Helmholtz coil using a 1 kHz magnetic field signal. Its angle is determined from the two minima at nominally +120° and –120° rotation, so the sensor in the tip of the probe is aligned to the vertical plane in z-direction, corresponding to the field maximum in the AMCC Helmholtz calibration coil.
- *Sensor Angle:* The sensor tilting in the vertical plane from the ideal vertical direction is determined from the two minima at nominally +120° and –120°. DASY system uses this angle to align the sensor for radial measurements to the x and y axis in the horizontal plane.
- *Sensitivity:* With the probe sensor aligned to the z-field in the AMCC, the output of the probe is compared to the magnetic field in the AMCC at 1 kHz. The field in the AMCC Helmholtz coil is given by the geometry and the current through the coil, which is monitored on the precision shunt resistor of the coil.

AM1D probe identification and configuration data

| | |
|-----------|---|
| Item | AM1DV2 Audio Magnetic 1D Field Probe |
| Type No | SP AM1 001 AF |
| Serial No | 1064 |

| | |
|--------------------|------------------------------------|
| Overall length | 296 mm |
| Tip diameter | 6.0 mm (at the tip) |
| Sensor offset | 3.0 mm (centre of sensor from tip) |
| Internal Amplifier | 40 dB |

| | |
|-----------------------|--|
| Manufacturer / Origin | Schmid & Partner Engineering AG, Zurich, Switzerland |
|-----------------------|--|

Calibration data

| | | | |
|--------------------------|------------------|-----------------------|-----------------|
| Connector rotation angle | (in DASY system) | 101.7° | +/- 3.6 ° (k=2) |
| Sensor angle | (in DASY system) | 0.61 ° | +/- 0.5 ° (k=2) |
| Sensitivity at 1 kHz | (in DASY system) | 0.0658 V/(A/m) | +/- 2.2 % (k=2) |

The reported uncertainty of measurement is stated as the standard uncertainty of measurement multiplied by the coverage factor k=2, which for a normal distribution corresponds to a coverage probability of approximately 95%.

ANNEX E DAE CALIBRATION CERTIFICATE

Calibration Laboratory of
Schmid & Partner
Engineering AG
 Zeughausstrasse 43, 8004 Zurich, Switzerland



S Schweizerischer Kalibrierdienst
C Service suisse d'étalonnage
S Servizio svizzero di taratura
S Swiss Calibration Service

Accredited by the Swiss Accreditation Service (SAS)
 The Swiss Accreditation Service is one of the signatories to the EA
 Multilateral Agreement for the recognition of calibration certificates

Accreditation No.: **SCS 0108**

Client **CTTL-BJ (Auden)**

Certificate No: **DAE4-1555_Aug20**

| CALIBRATION CERTIFICATE | | | |
|---|---|-----------------------------------|-------------------------|
| Object | DAE4 - SD 000 D04 BN - SN: 1555 | | |
| Calibration procedure(s) | QA CAL-06.v30 Calibration procedure for the data acquisition electronics (DAE) | | |
| Calibration date: | August 25, 2020 | | |
| This calibration certificate documents the traceability to national standards, which realize the physical units of measurements (SI). The measurements and the uncertainties with confidence probability are given on the following pages and are part of the certificate. | | | |
| All calibrations have been conducted in the closed laboratory facility: environment temperature (22 ± 3)°C and humidity < 70%. | | | |
| Calibration Equipment used (M&TE critical for calibration) | | | |
| Primary Standards | ID # | Cal Date (Certificate No.) | Scheduled Calibration |
| Keithley Multimeter Type 2001 | SN: 0810278 | 03-Sep-19 (No:25949) | Sep-20 |
| Secondary Standards | ID # | Check Date (in house) | Scheduled Check |
| Auto DAE Calibration Unit | SE UWS 053 AA 1001 | 09-Jan-20 (in house check) | In house check: Jan-21 |
| Calibrator Box V2.1 | SE UMS 006 AA 1002 | 09-Jan-20 (in house check) | In house check: Jan-21 |
| Calibrated by: | Name Dominique Steffen | Function Laboratory Technician | Signature |
| Approved by: | Sven Kühn | Deputy Manager | |
| This calibration certificate shall not be reproduced except in full without written approval of the laboratory. | | | Issued: August 25, 2020 |

**Calibration Laboratory of
Schmid & Partner
Engineering AG**
Zeughausstrasse 43, 8004 Zurich, Switzerland



S Schweizerischer Kalibrierdienst
C Service suisse d'étalonnage
S Servizio svizzero di taratura
S Swiss Calibration Service

Accredited by the Swiss Accreditation Service (SAS)
The Swiss Accreditation Service is one of the signatories to the EA
Multilateral Agreement for the recognition of calibration certificates

Accreditation No.: **SCS 0108**

Glossary

DAE data acquisition electronics
Connector angle information used in DASY system to align probe sensor X to the robot coordinate system.

Methods Applied and Interpretation of Parameters

- *DC Voltage Measurement*: Calibration Factor assessed for use in DASY system by comparison with a calibrated instrument traceable to national standards. The figure given corresponds to the full scale range of the voltmeter in the respective range.
- *Connector angle*: The angle of the connector is assessed measuring the angle mechanically by a tool inserted. Uncertainty is not required.
- The following parameters as documented in the Appendix contain technical information as a result from the performance test and require no uncertainty.
 - *DC Voltage Measurement Linearity*: Verification of the Linearity at +10% and -10% of the nominal calibration voltage. Influence of offset voltage is included in this measurement.
 - *Common mode sensitivity*: Influence of a positive or negative common mode voltage on the differential measurement.
 - *Channel separation*: Influence of a voltage on the neighbor channels not subject to an input voltage.
 - *AD Converter Values with inputs shorted*: Values on the internal AD converter corresponding to zero input voltage
 - *Input Offset Measurement*: Output voltage and statistical results over a large number of zero voltage measurements.
 - *Input Offset Current*: Typical value for information; Maximum channel input offset current, not considering the input resistance.
 - *Input resistance*: Typical value for information: DAE input resistance at the connector, during internal auto-zeroing and during measurement.
 - *Low Battery Alarm Voltage*: Typical value for information. Below this voltage, a battery alarm signal is generated.
 - *Power consumption*: Typical value for information. Supply currents in various operating modes.

DC Voltage Measurement

A/D - Converter Resolution nominal

High Range: 1LSB = 6.1μV, full range = -100...+300 mV

Low Range: 1LSB = 61nV, full range = -1.....+3mV

DASY measurement parameters: Auto Zero Time: 3 sec; Measuring time: 3 sec

| Calibration Factors | X | Y | Z |
|---------------------|-----------------------|-----------------------|-----------------------|
| High Range | 404.567 ± 0.02% (k=2) | 404.106 ± 0.02% (k=2) | 405.048 ± 0.02% (k=2) |
| Low Range | 3.93108 ± 1.50% (k=2) | 3.94793 ± 1.50% (k=2) | 3.97993 ± 1.50% (k=2) |

Connector Angle

| | |
|---|---------------|
| Connector Angle to be used in DASY system | 103.0 ° ± 1 ° |
|---|---------------|

Appendix (Additional assessments outside the scope of SCS0108)
1. DC Voltage Linearity

| High Range | Reading (μV) | Difference (μV) | Error (%) |
|-------------------|---------------------------|------------------------------|-----------|
| Channel X + Input | 199998.28 | 1.10 | 0.00 |
| Channel X + Input | 20003.63 | 1.12 | 0.01 |
| Channel X - Input | -19995.85 | 5.37 | -0.03 |
| Channel Y + Input | 199994.51 | -2.47 | -0.00 |
| Channel Y + Input | 20001.61 | -0.65 | -0.00 |
| Channel Y - Input | -19998.04 | 3.35 | -0.02 |
| Channel Z + Input | 199994.81 | -2.05 | -0.00 |
| Channel Z + Input | 19997.64 | -4.69 | -0.02 |
| Channel Z - Input | -20004.42 | -2.93 | 0.01 |

| Low Range | Reading (μV) | Difference (μV) | Error (%) |
|-------------------|---------------------------|------------------------------|-----------|
| Channel X + Input | 2002.15 | 0.39 | 0.02 |
| Channel X + Input | 201.90 | -0.07 | -0.03 |
| Channel X - Input | -197.43 | 0.48 | -0.24 |
| Channel Y + Input | 2002.32 | 0.69 | 0.03 |
| Channel Y + Input | 201.69 | -0.19 | -0.09 |
| Channel Y - Input | -198.84 | -0.88 | 0.44 |
| Channel Z + Input | 2002.33 | 0.77 | 0.04 |
| Channel Z + Input | 200.73 | -1.04 | -0.51 |
| Channel Z - Input | -199.45 | -1.38 | 0.70 |

2. Common mode sensitivity

DASY measurement parameters: Auto Zero Time: 3 sec; Measuring time: 3 sec

| | Common mode Input Voltage (mV) | High Range Average Reading (μV) | Low Range Average Reading (μV) |
|-----------|--------------------------------|--|---|
| Channel X | 200 | -9.81 | -11.02 |
| | - 200 | 12.62 | 11.00 |
| Channel Y | 200 | 11.00 | 10.83 |
| | - 200 | -12.40 | -12.35 |
| Channel Z | 200 | -2.26 | -2.45 |
| | - 200 | 0.93 | 0.06 |

3. Channel separation

DASY measurement parameters: Auto Zero Time: 3 sec; Measuring time: 3 sec

| | Input Voltage (mV) | Channel X (μV) | Channel Y (μV) | Channel Z (μV) |
|-----------|--------------------|-----------------------------|-----------------------------|-----------------------------|
| Channel X | 200 | - | -0.47 | -3.01 |
| Channel Y | 200 | 8.48 | - | 0.77 |
| Channel Z | 200 | 5.67 | 5.95 | - |

4. AD-Converter Values with inputs shorted

DASY measurement parameters: Auto Zero Time: 3 sec; Measuring time: 3 sec

| | High Range (LSB) | Low Range (LSB) |
|-----------|------------------|-----------------|
| Channel X | 15633 | 14896 |
| Channel Y | 15845 | 15540 |
| Channel Z | 16632 | 16309 |

5. Input Offset Measurement

DASY measurement parameters: Auto Zero Time: 3 sec; Measuring time: 3 sec
Input 10M Ω

| | Average (μ V) | min. Offset (μ V) | max. Offset (μ V) | Std. Deviation (μ V) |
|-----------|--------------------|------------------------|------------------------|---------------------------|
| Channel X | 0.03 | -0.98 | 1.54 | 0.54 |
| Channel Y | 0.55 | -0.65 | 1.74 | 0.45 |
| Channel Z | 0.37 | -0.92 | 2.14 | 0.59 |

6. Input Offset Current

Nominal Input circuitry offset current on all channels: <25fA

7. Input Resistance (Typical values for information)

| | Zeroing (kOhm) | Measuring (MOhm) |
|-----------|----------------|------------------|
| Channel X | 200 | 200 |
| Channel Y | 200 | 200 |
| Channel Z | 200 | 200 |

8. Low Battery Alarm Voltage (Typical values for information)

| Typical values | Alarm Level (VDC) |
|----------------|-------------------|
| Supply (+ Vcc) | +7.9 |
| Supply (- Vcc) | -7.6 |

9. Power Consumption (Typical values for information)

| Typical values | Switched off (mA) | Stand by (mA) | Transmitting (mA) |
|----------------|-------------------|---------------|-------------------|
| Supply (+ Vcc) | +0.01 | +6 | +14 |
| Supply (- Vcc) | -0.01 | -8 | -9 |



The photos of HAC test are presented in the additional document:

Appendix to test report No.I20Z62110-SEM04/05

The photos of HAC test