

Test Laboratory: Sporton International Inc.

#### Device Under Test Properties

Manufacturer	Dimensions [mm]	IMEI	DUT Type
	164.0 x 76.0 x 9.0		Phone

#### Exposure Conditions

Phantom Section	Position, Test Distance [mm]	Frequency [MHz]	Conversion Factor
5G	BACK, 2.00	38500.0	1.0

#### Hardware Setup

Phantom	Medium	Probe, Calibration Date	DAE, Calibration Date
mmWave - xxxx	Air -	EUmmWV4 - SN9461_F1-78GHz, 2019-11-05	DAE4 Sn1424, 2020-01-24

#### Scans Setup

Grid Extents [mm]	60.0 x 60.0
Grid Steps [lambda]	0.25 x 0.25
Sensor Surface [mm]	2.0

#### Measurement Results

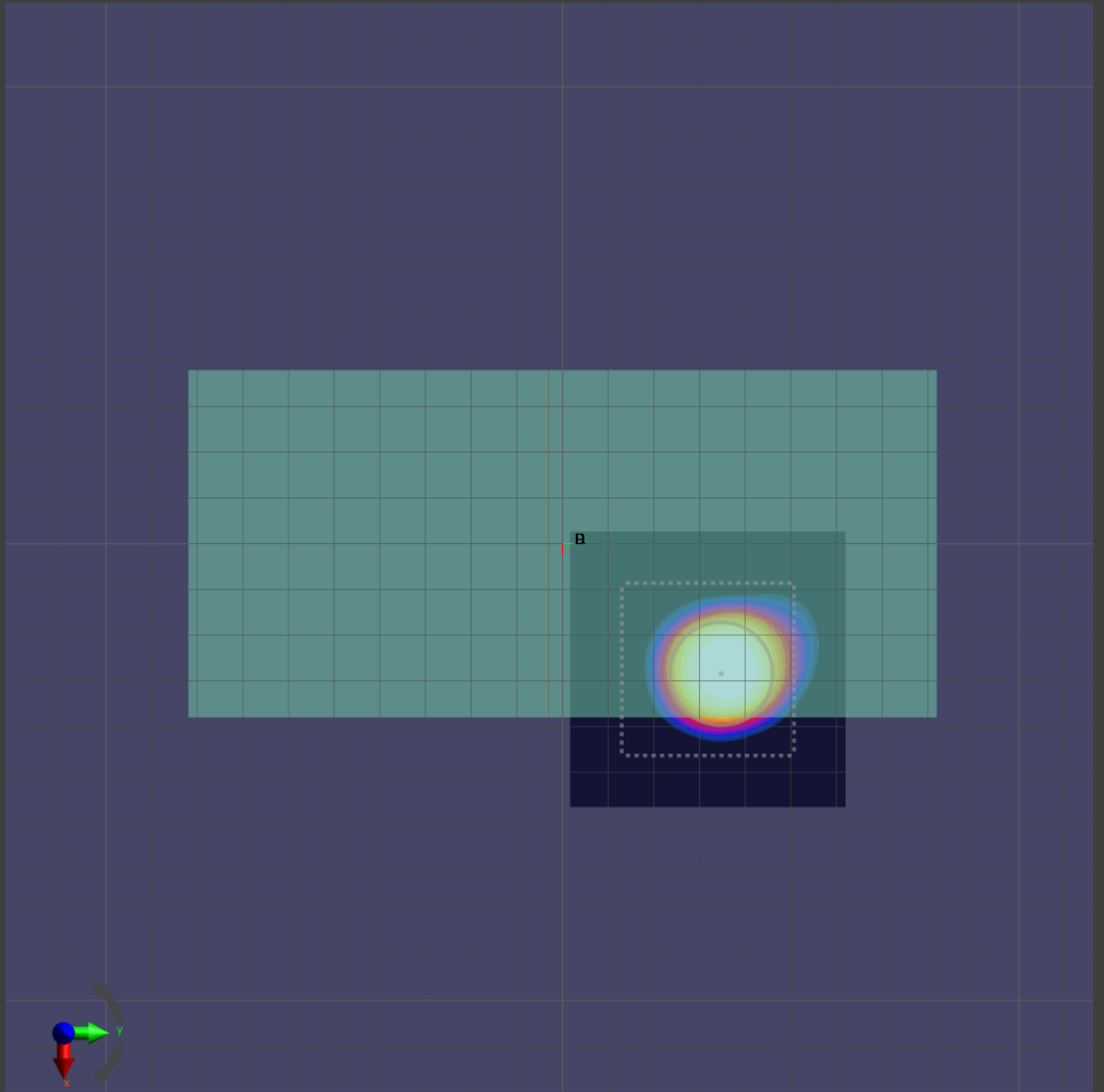
Date	2020-07-25, 02:16
Avg. Area [cm <sup>2</sup> ]	4.00
S <sub>avg inc</sub> [W/m <sup>2</sup> ]	4.02
S <sub>avg tot</sub> [W/m <sup>2</sup> ]	4.51
S <sub>peak</sub> [W/m <sup>2</sup> ]	35.5
E <sub>peak</sub> [V/m]	112
H <sub>peak</sub> [A/m]	0.251
Power Drift [dB]	-0.04

Averaged [4.0 cm<sup>2</sup>] |Re{S}|(x,y,z,f0) [dB(5.25W/m<sup>2</sup>)]

0



-10



Test Laboratory: Sporton International Inc.

#### Device Under Test Properties

Manufacturer	Dimensions [mm]	IMEI	DUT Type
	164.0 x 76.0 x 9.0		Phone

#### Exposure Conditions

Phantom Section	Position, Test Distance [mm]	Frequency [MHz]	Conversion Factor
5G	BACK, 2.00	27550.0	1.0

#### Hardware Setup

Phantom	Medium	Probe, Calibration Date	DAE, Calibration Date
mmWave - xxxx	Air -	EUmmWV4 - SN9461_F1-78GHz, 2019-11-05	DAE4 Sn1424, 2020-01-24

#### Scans Setup

Grid Extents [mm]	60.0 x 60.0
Grid Steps [lambda]	0.25 x 0.25
Sensor Surface [mm]	2.0

#### Measurement Results

Date	2020-07-26, 05:37
Avg. Area [cm <sup>2</sup> ]	4.00
S <sub>avg inc</sub> [W/m <sup>2</sup> ]	4.00
S <sub>avg tot</sub> [W/m <sup>2</sup> ]	4.50
S <sub>peak</sub> [W/m <sup>2</sup> ]	11.6
E <sub>peak</sub> [V/m]	72.0
H <sub>peak</sub> [A/m]	0.191
Power Drift [dB]	0.02

Averaged [4.0 cm<sup>2</sup>] |Re{S}|(x,y,z,f0) [dB(4.63W/m<sup>2</sup>)]

0



-10

