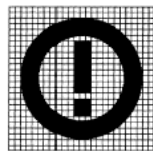
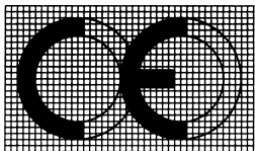


## GFLIP3 TMO/MPCS Commercial Sticker and CU Sticker

DATE 日期	DOCUMENT NO. 文件编号	VERSION 版本	REMARK 备注
2019-5-17		1.0	Creation of the document
2019-5-20		2.0	FCC ID/Bluetooth ID added
2019-6-6		3.0	To add MPCS version

Note: for CE logo, there is mandatory requirement as below:

- The CE conformity marking must consist of the initials “CE” taking the following form, if the CE marking is reduced or enlarged, the proportions given in the above graduated drawing must be respected.
- The CE marking must have a height of at least 5 mm except where this is not possible on account of the apparatus.
- The following picture shows an example of CE marking. The “CE” mark is always required. The other elements, notified body number (“NBnr” replaced by the four-digit identification number of any notified body involved) and class identifier (alert sign), may or may not be present depending on the particular circumstances.
- The class identifier is the “information sign” or “alert sign”. It forms part of the CE marking and is used to inform the user that restrictions on the use of the apparatus may apply in some countries or geographic areas. It must have the same height as the CE marking. This marking should be accompanied by information for the user on the applicable restrictions on the use of the apparatus and where these restrictions apply.
- CE Logo, notified body number (“NBnr”) and class identifier (alert sign) must have same height.

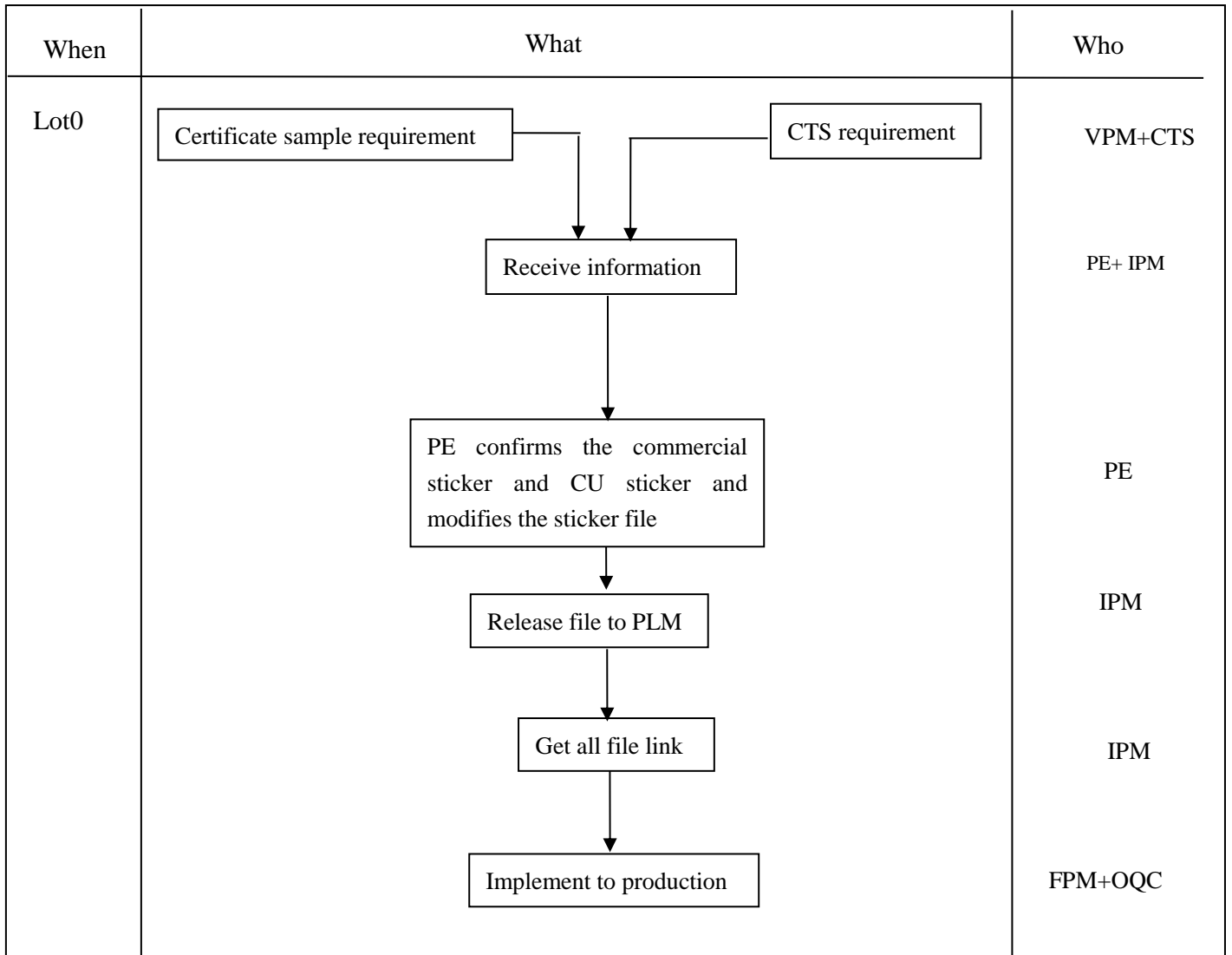


	Written by 拟定	Verified by 审核		Approved by 批准
Function 职位	IPM	IPM Leader	NPI Manager	GIM Director
Name 姓名	Chengxun.Jin	Xingming SHI	Yunfeng XU	Dai XU
Date 日期	2019-6-6			
Signature 签名				

Version 版本	Date 日期	Department Name 部门	Document Name 文件名称	Document Number 文件编号
3.0	2019-6-6	NPI	GFLIP3 TMO/MPCS Commercial Sticker and CU Sticker	

**Procedure Flow Chart**

This flow chart define the “commercial sticker and cu sticker” document, and define the flow of “made in” file, “Specific Marking” file and “ Importation information “file to EMS factory.



**1 Purpose and Application Field**

The purpose of this document is to define the commercial sticker and CU stickers modify procedure and define all of information on the commercial sticker and CU sticker for **GFLIP3 TMO/MPCS** product and implement to production

**2 Responsibility**

2.1 CTS

- Release official document contain commercial sticker and cu sticker label information.

2.2 IPM

Version 版本	Data 日期	Department Name 部门	Document Name 文件名称	Document Number 文件编号
3.0	2019-6-6	NPI	GFLIP3 TMO/MPCS Commercial Sticker and CU Sticker	

- Get information from CTS ,and confirm the work instruction PE prepared for factory

2.3 PE

- Define the format of the commercial sticker and cu sticker and prepare label printing work instruction for production

2.4 FPM&OQC

- implement this document to production

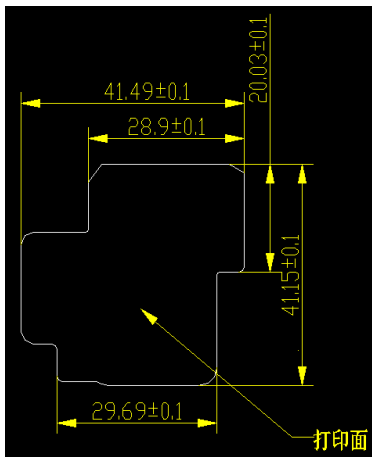
3 Reference Document

GFLIP3 TMO/MPCS\_Commercial\_Sticker\_and\_CU\_Sticker\_V03.doc

4. COMMERCIAL LABEL MARKING (IMEI/MEID sticker)

4.1 Printing Zone definition

Label information  
料号: **CPE000507AC0**  
Length=41.15mm  
Width = 41.49mm  
Thickness = 0.1mm



ZONE 1				
ZONE 2				
ZONE 3				
ZONE 4				
ZONE 5				
ZONE 6	ZONE 7	ZONE 8	ZONE 9	ZONE 10
ZONE 11			ZONE 12	
ZONE 13				
ZONE 14				
ZONE 15				

Brand	Model name	IMEI TAC	Bluetooth Declaration ID	Certification name
TMO US	4052W	01549000	Bluetooth Declaration ID D044935	FCC ID:2ACCJN032 HAC:XX/XX
MPCS US	4052Z	01556500	Bluetooth Declaration ID D044935	FCC ID:2ACCJN032 HAC:XX/XX

Zone	Variable			Signification
Version 版本	Data 日期	Department Name 部门	Document Name 文件名称	Document Number 文件编号
3.0	2019-6-6	NPI	GFLIP3 TMO/MPCS Commercial Sticker and CU Sticker	

1	Manufacture Date and bar code	MM/YYYY
2	Commercial name	4052W
3	FCC ID	FCC ID:2ACCJN032
4	HAC	XX/XX
5	Bluetooth Declaration ID	Bluetooth Declaration ID D044935
6	SIM LOCK	
7	PTS	
8	Short code	
9	PTH (M)	04 (取 MES 系统 PTH 值, 实际打印值为 04)
10	Manufacture Date Code	
11	Origin of Country	Made in China
12	Industry bar code	
13	CU reference	
14	IMEI number and bar code	
15	Brand logo	New ALCATEL logo

The customization bench should create a specific format file for each downloading handset and send it to another computer in charge of label printing.

#### 4.2 MEID Sticker Sample



#### CU REF :

**TMO :** 4052W-2ATBUS0-A/4052W-2ATBUS3/4052W-2ATBUSK

**MPCS :** 4052Z-2ATBUS0-A/ 4052Z-2ATBUS3

Version 版本	Data 日期	Department Name 部门	Document Name 文件名称	Document Number 文件编号
3.0	2019-6-6	NPI	GFLIP3 TMO/MPCS Commercial Sticker and CU Sticker	

NOTE: About Made in info, we should print “**Made in China**” or “**MADE IN CHINA**” for EU, print “**Hecho en China**” or “**HECHO EN CHINA**” for US both on IMEI and CU label. For United States, print “**Made in China**” both on IMEI and CU labels.

## 5. UNIT BOX LABEL MARKING (CU sticker)

### 5.1 Label format

Label Dimension: **33\*14 mm**

Blank Label Reference: **CPE0000018C0**

Dimensions of Information:

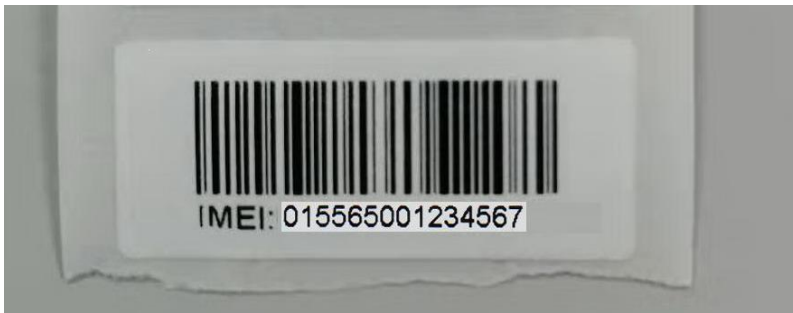
Code 13: Height x Length=13mm x 26mm

Code 128: Height=6mm

Text: Height=2.25mm

Logo TCL&ALCATEL: Height x Length=4mm x 17mm

### 5.2 CU label format (size: **33\*14 mm**)



#### CU REF :

**TMO** : 4052W-2ATBUS0-A/4052W-2ATBUS3/4052W-2ATBUSK

**MPCS** : 4052Z-2ATBUS0-A/ 4052Z-2ATBUS3

## 6. Information of commercial & CU sticker

### 6.1 “made in” and Operator logo on commercial sticker

Pls consult file TBC

### 6.2 “Specific Marking” and “made in” on cu sticker

GSM Ver. Consult file TBC

PCS Ver. Consult file TBC

### 6.3 “ Importation information “, Print on another 38\*80 label

Pls consult file TBC

Version 版本	Data 日期	Department Name 部门	Document Name 文件名称	Document Number 文件编号
3.0	2019-6-6	NPI	GFLIP3 TMO/MPCS Commercial Sticker and CU Sticker	