

WCDMA1700 Body Rear 10mm Hotspot

Date/Time: 2022/5/25

Electronics: DAE4 Sn797

Medium: Dipole 1750MHz

Medium parameters used: $f = 1753$ MHz; $\sigma = 1.365$ S/m; $\epsilon_r = 41.126$; $\rho = 1000$ kg/m³

Ambient Temperature: 22.5°C Liquid Temperature: 22.0°C

Communication System: WCDMA (0); Frequency: 1752.6 MHz; Duty Cycle: 1:1

Probe: EX3DV4 - SN7401ConvF(8.62, 8.62, 8.62)

Area Scan (9x14x1):

Measurement grid: dx=15mm, dy=15mm

Maximum value of SAR (measured) = 0.589 W/kg

Zoom Scan (5x5x7)/Cube 0:

Measurement grid: dx=8mm, dy=8mm, dz=5mm

Reference Value = 15.45 V/m; Power Drift = -0.02 dB

Peak SAR (extrapolated) = 0.867 W/kg

SAR(1 g) = 0.487 W/kg; SAR(10 g) = 0.280 W/kg

Maximum value of SAR (measured) = 0.535 W/kg

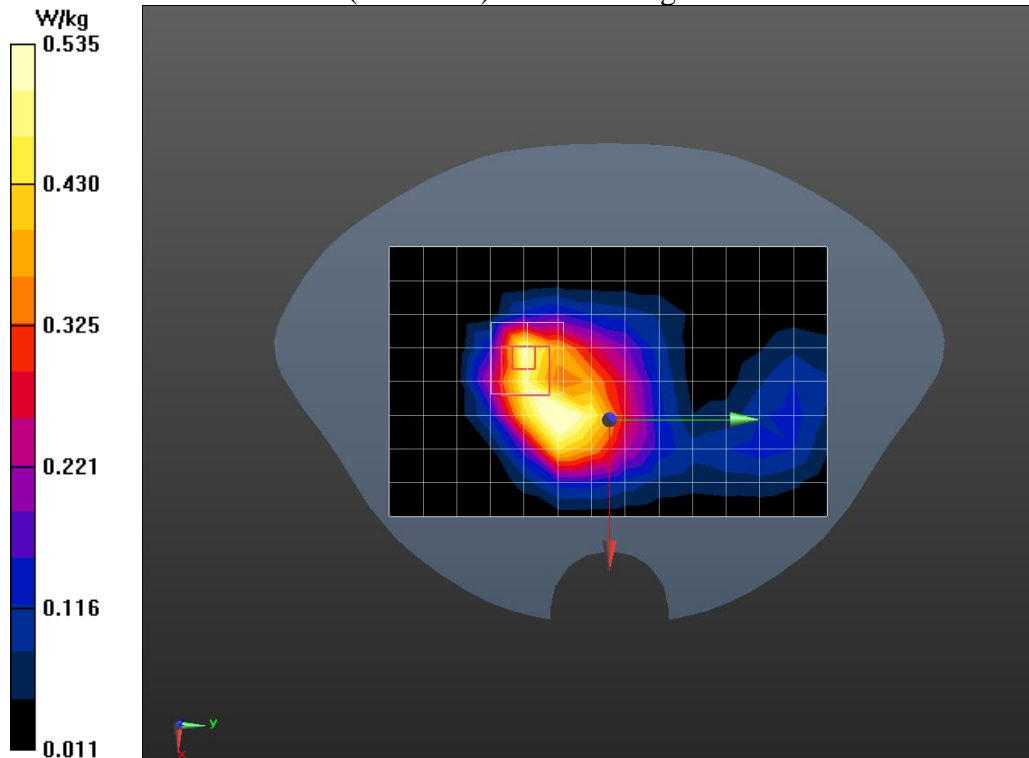


Fig A.10

WCDMA 1700 Body Rear 15mm

Date/Time: 2022/5/25

Electronics: DAE4 Sn797

Medium: Head 1750MHz

Medium parameters used (interpolated): $f = 1732.4$ MHz; $\sigma = 1.331$ S/m; $\epsilon_r = 41.099$; $\rho = 1000$ kg/m³

Ambient Temperature: 22.5°C Liquid Temperature: 22.0°C

Communication System: WCDMA (0); Frequency: 1732.4 MHz; Duty Cycle: 1:1

Probe: EX3DV4 - SN7401ConvF(8.62, 8.62, 8.62)

Area Scan (9x14x1): Measurement grid: dx=15mm, dy=15mm

Maximum value of SAR (measured) = 0.424 W/kg

Zoom Scan (5x5x7)/Cube 0: Measurement grid: dx=8mm, dy=8mm, dz=5mm

Reference Value = 13.33 V/m; Power Drift = -0.00 dB

Peak SAR (extrapolated) = 0.592 W/kg

SAR(1 g) = 0.405 W/kg; SAR(10 g) = 0.264 W/kg

Maximum value of SAR (measured) = 0.435 W/kg

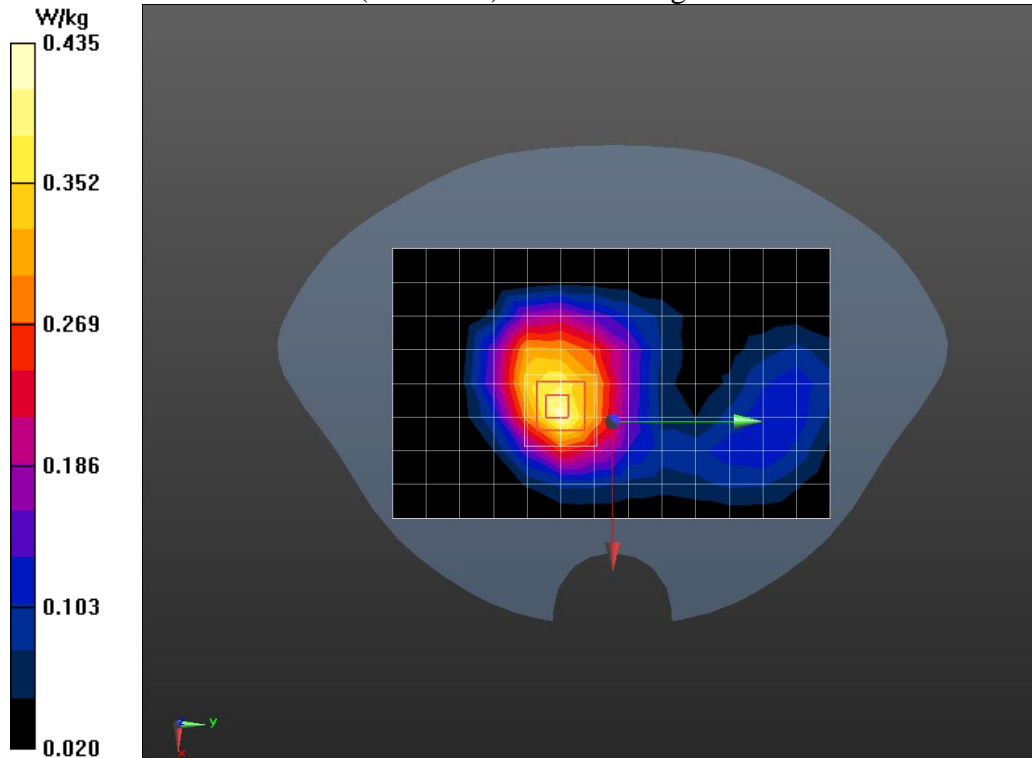


Fig A.11

WCDMA850 Cheek Left

Date/Time: 2022/5/31

Electronics: DAE4 Sn797

Medium: Head 835MHz

Medium parameters used (interpolated): $f = 826.4$ MHz; $\sigma = 0.887$ S/m; $\epsilon_r = 41.861$; $\rho = 1000$ kg/m³

Ambient Temperature: 22.5°C Liquid Temperature: 22.0°C

Communication System: WCDMA Band5; Frequency: 826.4 MHz; Duty Cycle: 1:1

Probe: EX3DV4 - SN7401ConvF(10.17, 10.17, 10.17)

Area Scan (8x14x1):

Measurement grid: dx=15mm, dy=15mm

Maximum value of SAR (measured) = 0.767 W/kg

Zoom Scan (5x5x7)/Cube 0:

Measurement grid: dx=8mm, dy=8mm, dz=5mm

Reference Value = 19.10 V/m; Power Drift = 0.06 dB

Peak SAR (extrapolated) = 1.28 W/kg

SAR(1 g) = 0.751 W/kg; SAR(10 g) = 0.518 W/kg

Maximum value of SAR (measured) = 0.825 W/kg

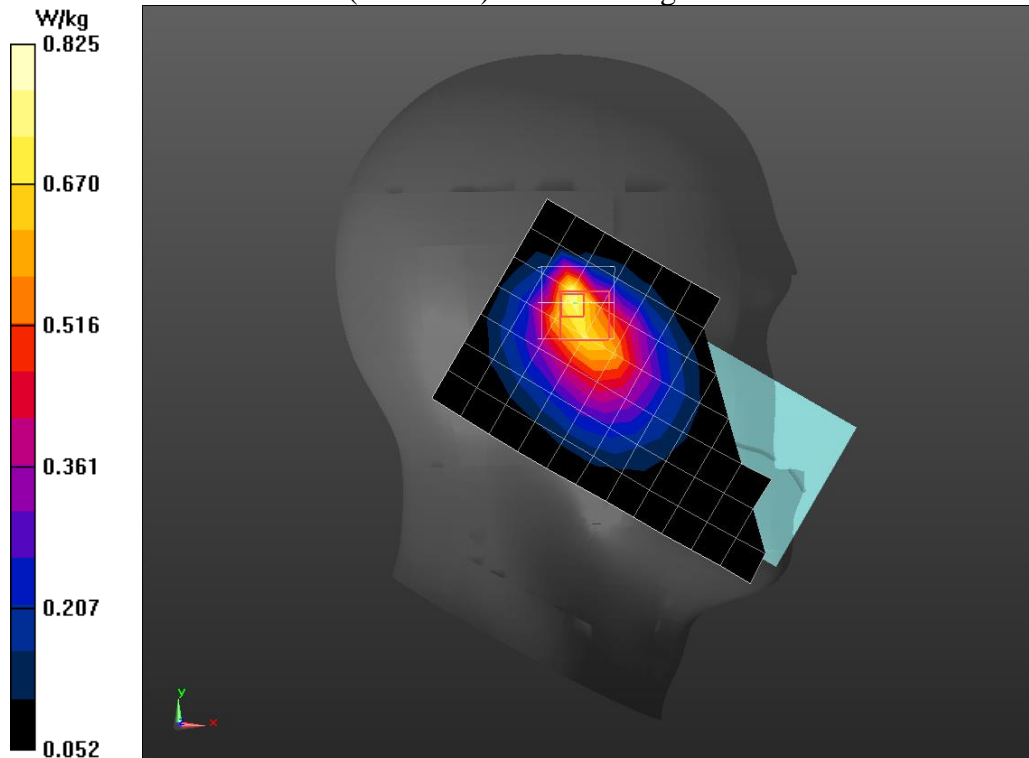


Fig A.12

WCDMA850 Body Right 10mm

Date/Time: 2022/5/31

Electronics: DAE4 Sn797

Medium: Head 835MHz

Medium parameters used: $f = 837$ MHz; $\sigma = 0.908$ S/m; $\epsilon_r = 41.99$; $\rho = 1000$ kg/m³

Ambient Temperature: 22.5°C Liquid Temperature: 22.0°C

Communication System: WCDMA (0); Frequency: 836.6 MHz; Duty Cycle: 1:1

Probe: EX3DV4 - SN7401ConvF(10.17, 10.17, 10.17)

Area Scan (4x13x1):

Measurement grid: dx=15mm, dy=15mm

Maximum value of SAR (measured) = 0.708 W/kg

Zoom Scan (5x5x7)/Cube 0:

Measurement grid: dx=8mm, dy=8mm, dz=5mm

Reference Value = 28.69 V/m; Power Drift = 0.17 dB

Peak SAR (extrapolated) = 0.882 W/kg

SAR(1 g) = 0.722 W/kg; SAR(10 g) = 0.572 W/kg

Maximum value of SAR (measured) = 0.753 W/kg

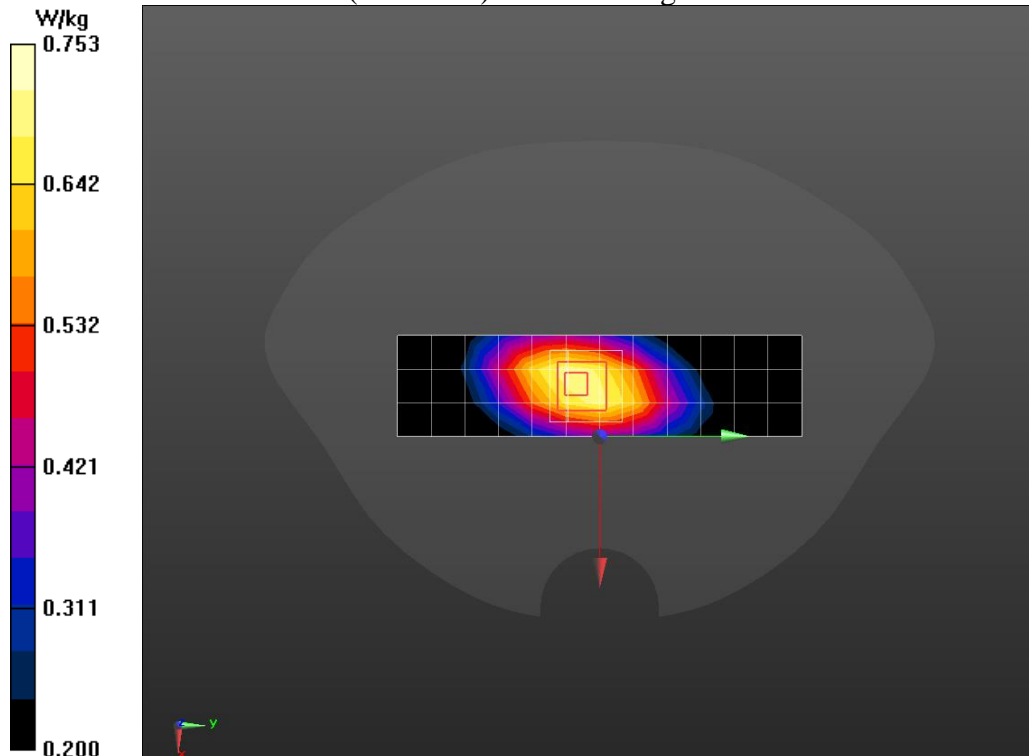


Fig A.13

LTE Band2 Cheek Left

Date/Time: 2022/5/23

Electronics: DAE4 Sn797

Medium: Head 1900MHz

Medium parameters used: $f = 1900$ MHz; $\sigma = 1.426$ S/m; $\epsilon_r = 39.218$; $\rho = 1000$ kg/m³

Ambient Temperature: 22.5°C Liquid Temperature: 22.0°C

Communication System: LTE Band 2 (0); Frequency: 1900 MHz; Duty Cycle: 1:1

Probe: EX3DV4 - SN7401ConvF(8.35, 8.35, 8.35)

Area Scan (8x14x1):

Measurement grid: dx=15mm, dy=15mm

Maximum value of SAR (measured) = 0.408 W/kg

Zoom Scan (5x5x7)/Cube 0:

Measurement grid: dx=8mm, dy=8mm, dz=5mm

Reference Value = 5.619 V/m; Power Drift = 0.00 dB

Peak SAR (extrapolated) = 0.556 W/kg

SAR(1 g) = 0.379 W/kg; SAR(10 g) = 0.243 W/kg

Maximum value of SAR (measured) = 0.398 W/kg

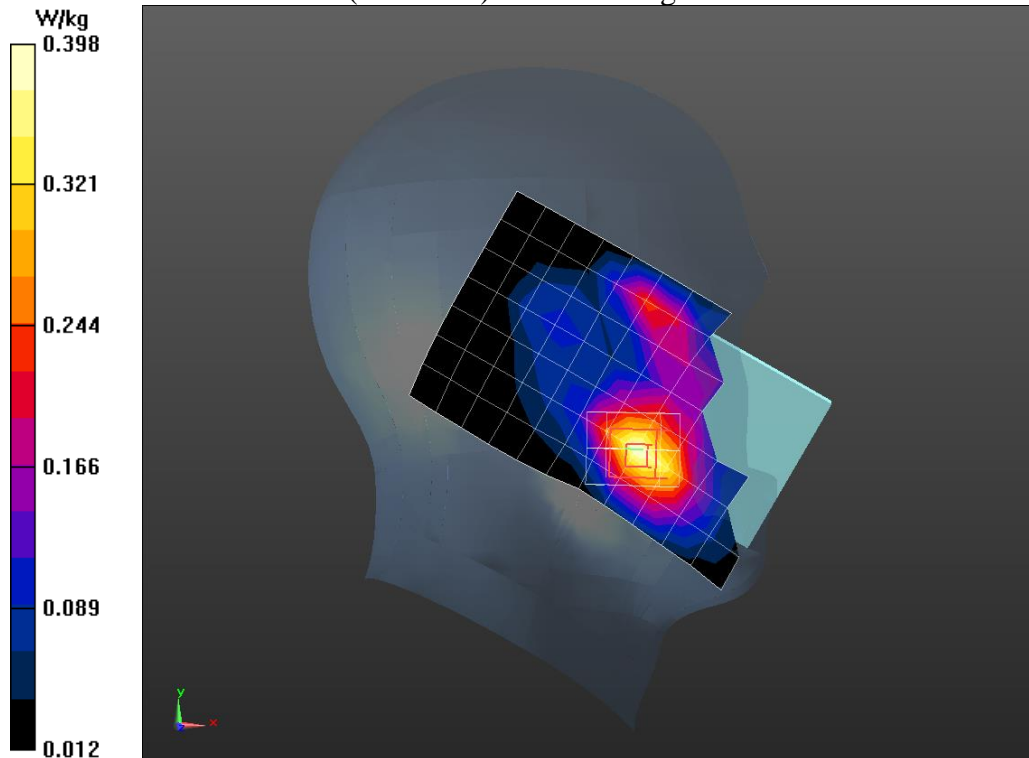


Fig A.14

LTE Band2 Body Rear 10mm Hotspot

Date/Time: 2022/5/23

Electronics: DAE4 Sn797

Medium: Head 1900MHz

Medium parameters used: $f = 1900$ MHz; $\sigma = 1.426$ S/m; $\epsilon_r = 39.218$; $\rho = 1000$ kg/m³

Ambient Temperature: 22.5°C Liquid Temperature: 22.0°C

Communication System: LTE Band 2 (0); Frequency: 1900 MHz; Duty Cycle: 1:1

Probe: EX3DV4 - SN7401ConvF(8.35, 8.35, 8.35)

Area Scan (9x14x1):

Measurement grid: dx=15mm, dy=15mm

Maximum value of SAR (measured) = 0.659 W/kg

Zoom Scan (5x5x7)/Cube 0:

Measurement grid: dx=8mm, dy=8mm, dz=5mm

Reference Value = 15.99 V/m; Power Drift = 0.01 dB

Peak SAR (extrapolated) = 1.27 W/kg

SAR(1 g) = 0.667 W/kg; SAR(10 g) = 0.378 W/kg

Maximum value of SAR (measured) = 0.737 W/kg

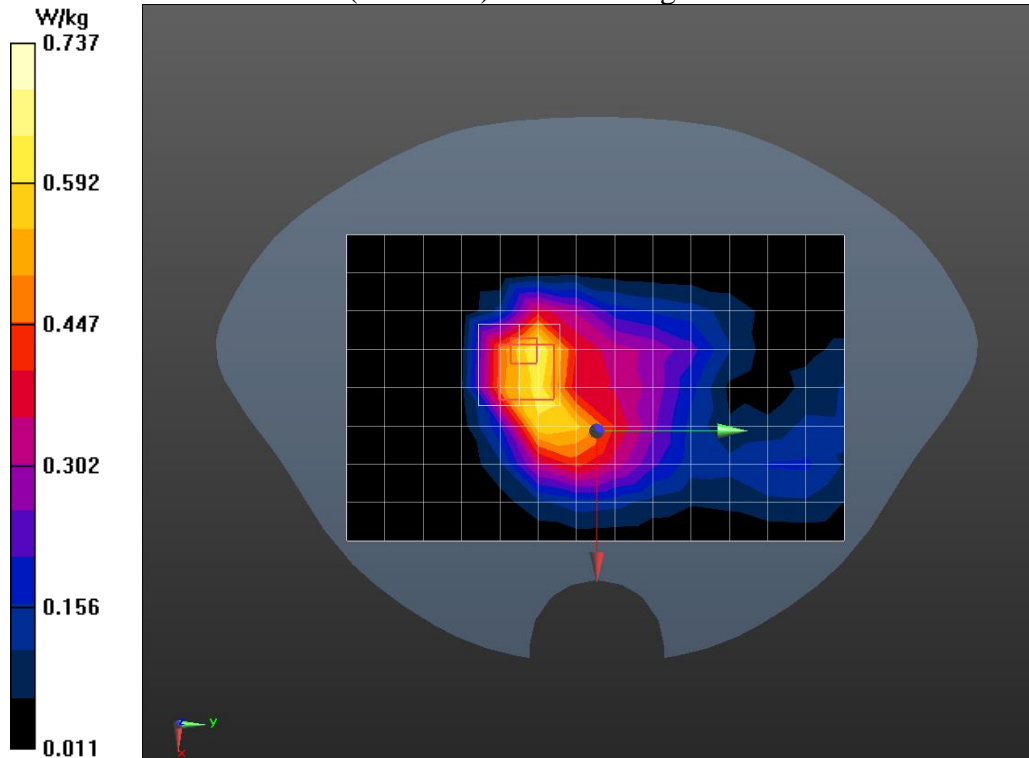


Fig A.15

LTE Band2 Body Rear 15mm

Date/Time: 2022/5/23

Electronics: DAE4 Sn797

Medium: Head 1900MHz

Medium parameters used (extrapolated): $f = 1860$ MHz; $\sigma = 1.382$ S/m; $\epsilon_r = 40.357$; $\rho = 1000$ kg/m³

Ambient Temperature: 22.5°C Liquid Temperature: 22.0°C

Communication System: LTE Band 2 (0); Frequency: 1860 MHz; Duty Cycle: 1:1

Probe: EX3DV4 - SN7401ConvF(8.35, 8.35, 8.35)

Area Scan (9x14x1):

Measurement grid: dx=15mm, dy=15mm

Maximum value of SAR (measured) = 0.367 W/kg

Zoom Scan (5x5x7)/Cube 0:

Measurement grid: dx=8mm, dy=8mm, dz=5mm

Reference Value = 13.55 V/m; Power Drift = 0.01 dB

Peak SAR (extrapolated) = 0.521 W/kg

SAR(1 g) = 0.349 W/kg; SAR(10 g) = 0.226 W/kg

Maximum value of SAR (measured) = 0.375 W/kg

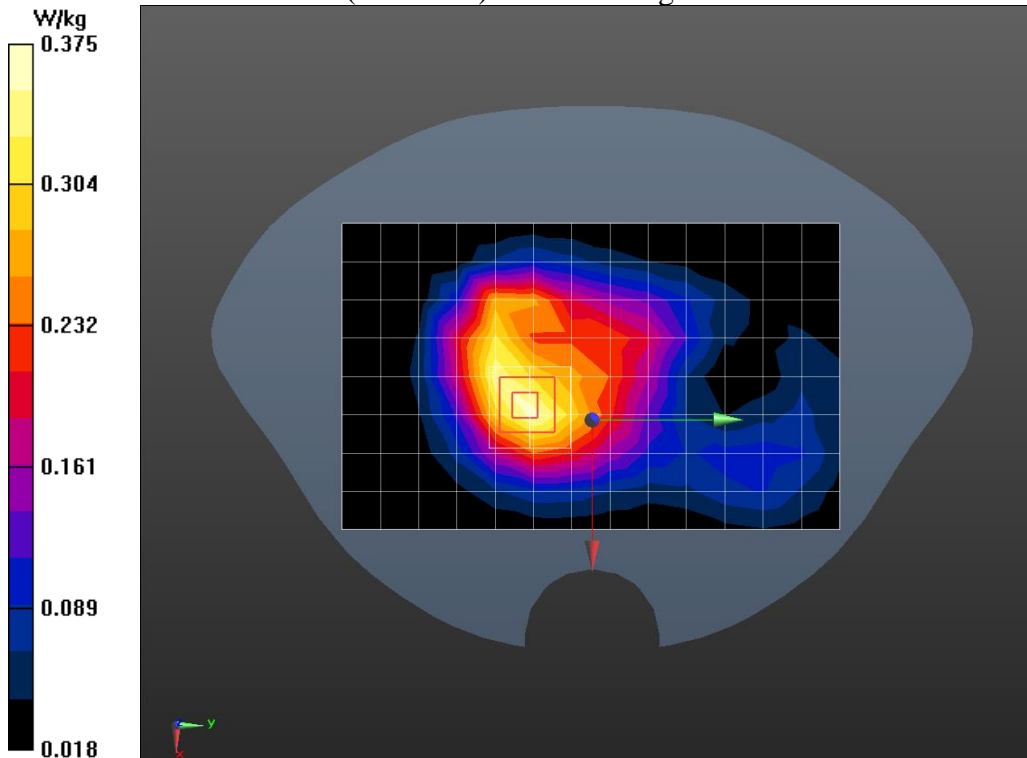


Fig A.16

LTE Band5 Cheek Left

Date/Time: 2022/5/31

Electronics: DAE4 Sn797

Medium: Head 835MHz

Medium parameters used (interpolated): $f = 836.5$ MHz; $\sigma = 0.907$ S/m; $\epsilon_r = 41.982$; $\rho = 1000$ kg/m³

Ambient Temperature: 22.5°C Liquid Temperature: 22.0°C

Communication System: LTE Band 5 (0); Frequency: 836.5 MHz; Duty Cycle: 1:1

Probe: EX3DV4 - SN7401ConvF(10.17, 10.17, 10.17)

Area Scan (8x14x1):

Measurement grid: dx=15mm, dy=15mm

Maximum value of SAR (measured) = 0.850 W/kg

Zoom Scan (5x5x7)/Cube 0:

Measurement grid: dx=8mm, dy=8mm, dz=5mm

Reference Value = 19.27 V/m; Power Drift = -0.03 dB

Peak SAR (extrapolated) = 1.28 W/kg

SAR(1 g) = 0.767 W/kg; SAR(10 g) = 0.549 W/kg

Maximum value of SAR (measured) = 0.821 W/kg

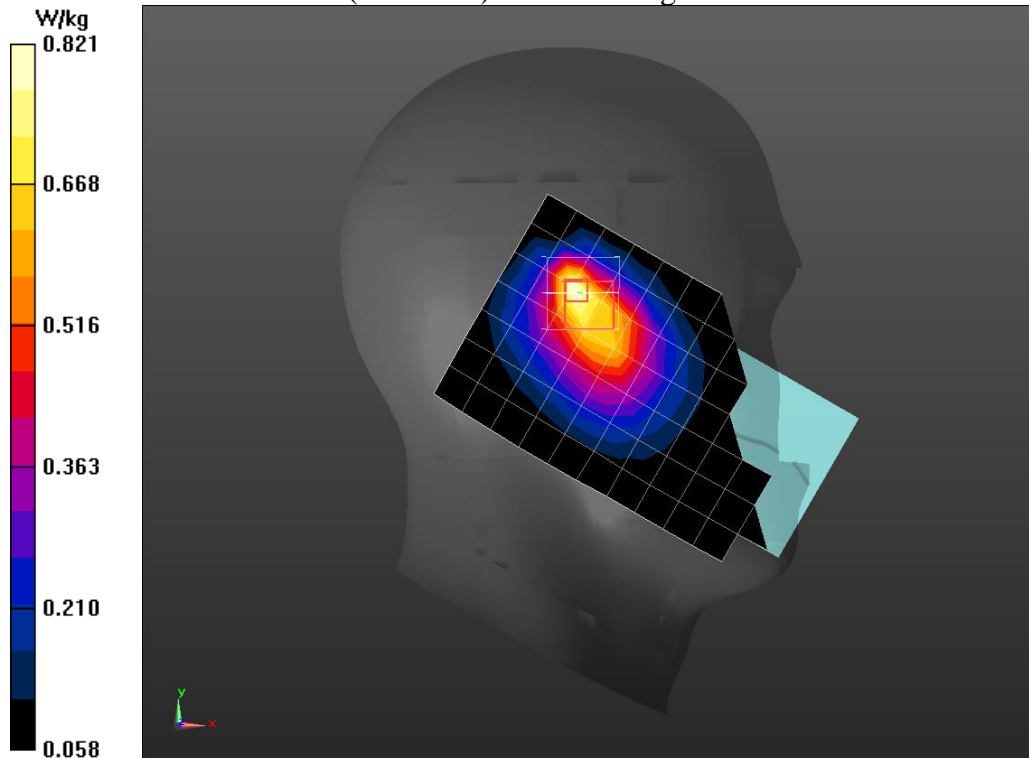


Fig A.17

LTE Band5 Body Right 10mm Hotspot

Date/Time: 2022/5/31

Electronics: DAE4 Sn797

Medium: Head 835MHz

Medium parameters used: $f = 844 \text{ MHz}$; $\sigma = 0.922 \text{ S/m}$; $\epsilon_r = 42.072$; $\rho = 1000 \text{ kg/m}^3$

Ambient Temperature: 22.5°C Liquid Temperature: 22.0°C

Communication System: LTE Band 5 (0); Frequency: 844 MHz; Duty Cycle: 1:1

Probe: EX3DV4 - SN7401ConvF(10.17, 10.17, 10.17)

Area Scan (4x13x1):

Measurement grid: $dx=15\text{mm}$, $dy=15\text{mm}$

Maximum value of SAR (measured) = 0.755 W/kg

Zoom Scan (5x5x7)/Cube 0:

Measurement grid: $dx=8\text{mm}$, $dy=8\text{mm}$, $dz=5\text{mm}$

Reference Value = 28.06 V/m ; Power Drift = 0.01 dB

Peak SAR (extrapolated) = 0.925 W/kg

SAR(1 g) = 0.754 W/kg ; SAR(10 g) = 0.598 W/kg

Maximum value of SAR (measured) = 0.788 W/kg

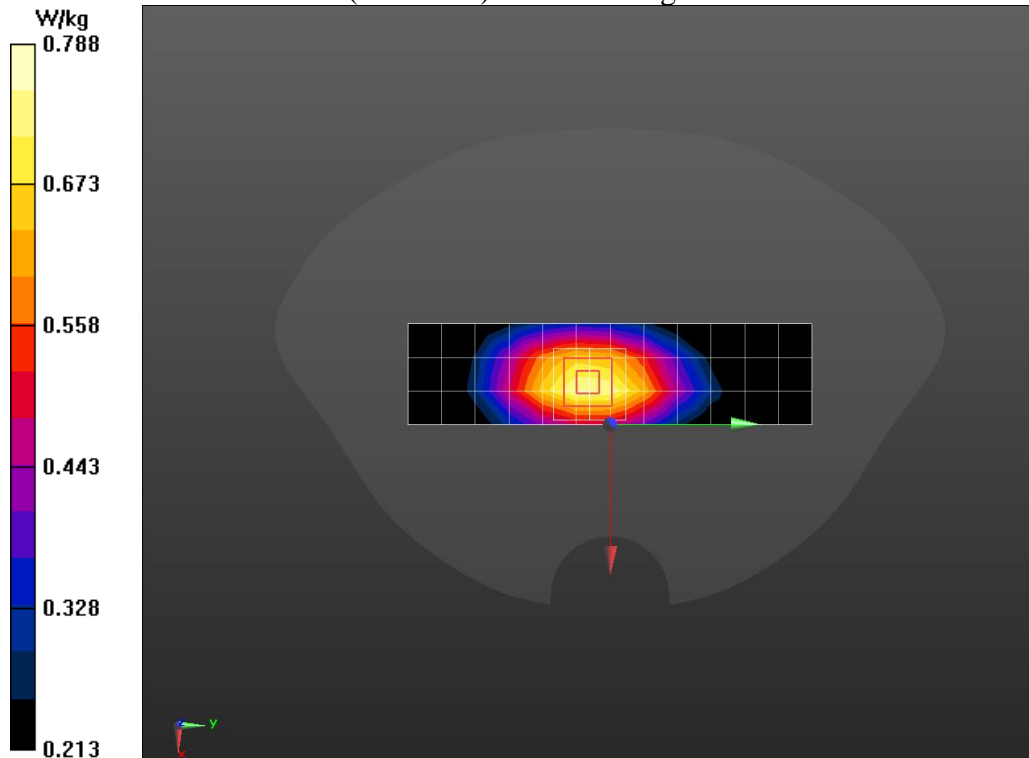


Fig A.18

LTE Band12 Cheek Left

Date/Time: 2022/5/30

Electronics: DAE4 Sn797

Medium: Head 750MHz

Medium parameters used: $f = 704 \text{ MHz}$; $\sigma = 0.876 \text{ S/m}$; $\epsilon_r = 43.221$; $\rho = 1000 \text{ kg/m}^3$

Ambient Temperature: 22.5°C Liquid Temperature: 22.0°C

Communication System: LTE Band 12 (0); Frequency: 704 MHz; Duty Cycle: 1:1

Probe: EX3DV4 - SN7401ConvF(10.59, 10.59, 10.59)

Area Scan (8x14x1):

Measurement grid: $dx=15\text{mm}$, $dy=15\text{mm}$

Maximum value of SAR (measured) = 0.459 W/kg

Zoom Scan (5x5x7)/Cube 0:

Measurement grid: $dx=8\text{mm}$, $dy=8\text{mm}$, $dz=5\text{mm}$

Reference Value = 17.09 V/m; Power Drift = -0.03 dB

Peak SAR (extrapolated) = 0.683 W/kg

SAR(1 g) = 0.456 W/kg; SAR(10 g) = 0.365 W/kg

Maximum value of SAR (measured) = 0.495 W/kg

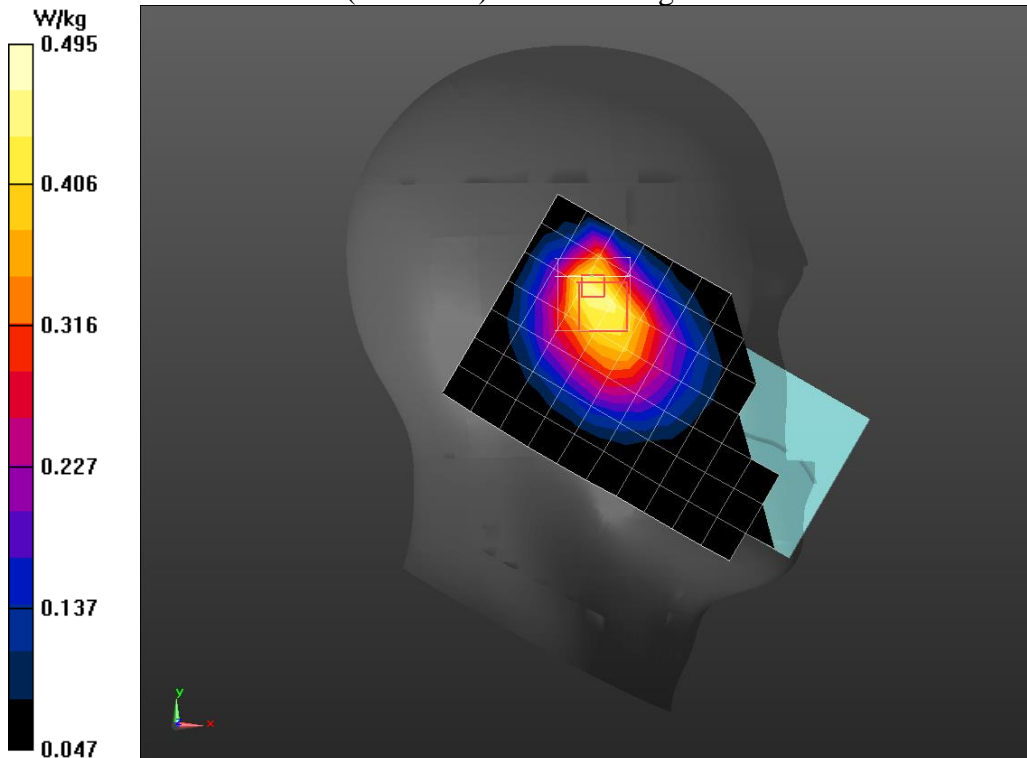


Fig A.19

LTE Band 12 Body Rear 10mm Hotspot

Date/Time: 2022/5/30

Electronics: DAE4 Sn797

Medium: Head 750MHz

Medium parameters used: $f = 704$ MHz; $\sigma = 0.876$ S/m; $\epsilon_r = 43.221$; $\rho = 1000$ kg/m³

Ambient Temperature: 22.5°C Liquid Temperature: 22.0°C

Communication System: LTE Band 12 (0); Frequency: 704 MHz; Duty Cycle: 1:1

Probe: EX3DV4 - SN7401ConvF(10.59, 10.59, 10.59)

Area Scan (9x14x1):

Measurement grid: $dx=15$ mm, $dy=15$ mm

Maximum value of SAR (measured) = 0.512 W/kg

Zoom Scan (5x5x7)/Cube 0:

Measurement grid: $dx=8$ mm, $dy=8$ mm, $dz=5$ mm

Reference Value = 23.88 V/m; Power Drift = 0.00 dB

Peak SAR (extrapolated) = 0.561 W/kg

SAR(1 g) = 0.505 W/kg; SAR(10 g) = 0.434 W/kg

Maximum value of SAR (measured) = 0.519 W/kg

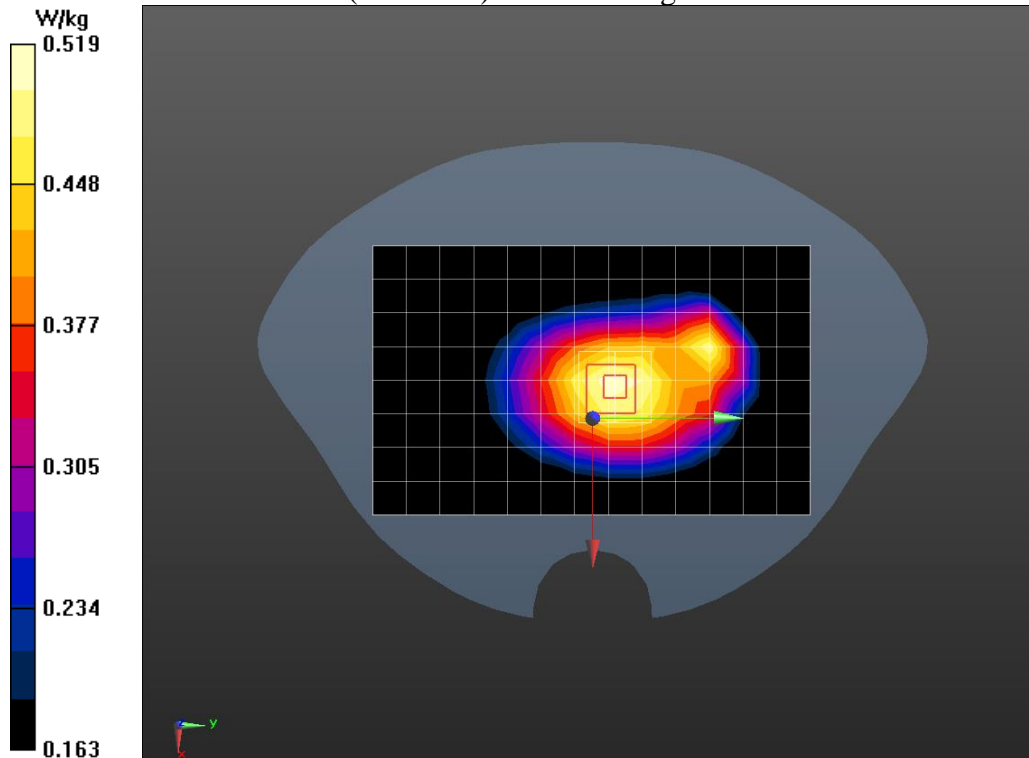


Fig A.20

LTE Band14 Cheek Left

Date/Time: 2022/5/30

Electronics: DAE4 Sn797

Medium: Head 750MHz

Medium parameters used: $f = 793 \text{ MHz}$; $\sigma = 0.908 \text{ S/m}$; $\epsilon_r = 41.242$; $\rho = 1000 \text{ kg/m}^3$

Ambient Temperature: 22.5°C Liquid Temperature: 22.0°C

Communication System: LTE (0); Frequency: 793 MHz; Duty Cycle: 1:1

Probe: EX3DV4 - SN7401ConvF(10.59, 10.59, 10.59)

Area Scan (8x14x1): Measurement grid: $dx=15\text{mm}$, $dy=15\text{mm}$

Maximum value of SAR (measured) = 0.638 W/kg

Zoom Scan (5x5x7)/Cube 0: Measurement grid: $dx=8\text{mm}$, $dy=8\text{mm}$, $dz=5\text{mm}$

Reference Value = 17.29 V/m ; Power Drift = -0.15 dB

Peak SAR (extrapolated) = 1.03 W/kg

SAR(1 g) = 0.582 W/kg ; SAR(10 g) = 0.410 W/kg

Maximum value of SAR (measured) = 0.625 W/kg

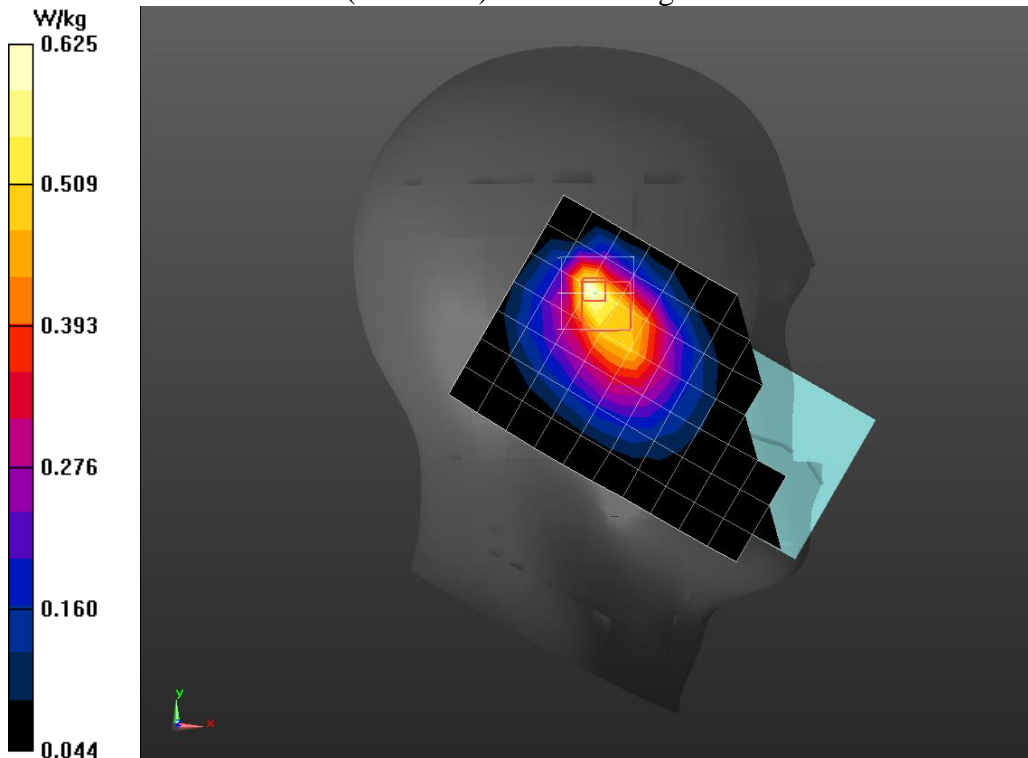


Fig A.21

LTE Band14 Body Right 10mm Hotspot

Date/Time: 2022/5/30

Electronics: DAE4 Sn797

Medium: Head 750MHz

Medium parameters used: $f = 793$ MHz; $\sigma = 0.908$ S/m; $\epsilon_r = 41.242$; $\rho = 1000$ kg/m³

Ambient Temperature: 22.5°C Liquid Temperature: 22.0°C

Communication System: TE Band14 (0); Frequency: 793 MHz; Duty Cycle: 1:1

Probe: EX3DV4 - SN7401ConvF(10.59, 10.59, 10.59)

Area Scan (4x13x1): Measurement grid: dx=15mm, dy=15mm

Maximum value of SAR (measured) = 0.716 W/kg

Zoom Scan (5x5x7)/Cube 0: Measurement grid: dx=8mm, dy=8mm, dz=5mm

Reference Value = 27.72 V/m; Power Drift = -0.02 dB

Peak SAR (extrapolated) = 0.839 W/kg

SAR(1 g) = 0.698 W/kg; SAR(10 g) = 0.552 W/kg

Maximum value of SAR (measured) = 0.731 W/kg

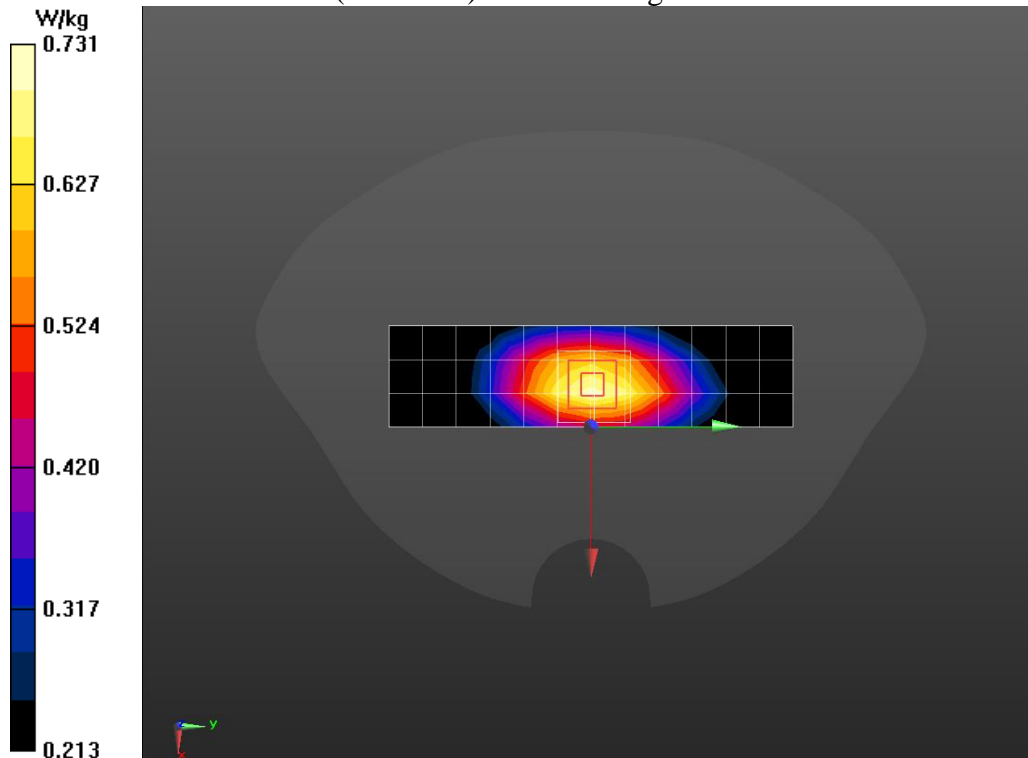


Fig A.22

LTE Band30 Cheek Right

Date/Time: 2022/5/27

Electronics: DAE4 Sn797

Medium: Head 2300MHz

Medium parameters used: $f = 2310$ MHz; $\sigma = 1.722$ S/m; $\epsilon_r = 39.958$; $\rho = 1000$ kg/m³

Ambient Temperature: 22.5°C Liquid Temperature: 22.0°C

Communication System: LTE band30 (0); Frequency: 2310 MHz; Duty Cycle: 1:1

Probe: EX3DV4 - SN7401ConvF(8.2, 8.2, 8.2)

Area Scan (8x13x1):

Measurement grid: $dx=12$ mm, $dy=12$ mm

Maximum value of SAR (measured) = 0.0362 W/kg

Zoom Scan (7x7x7)/Cube 0:

Measurement grid: $dx=5$ mm, $dy=5$ mm, $dz=5$ mm

Reference Value = 2.238 V/m; Power Drift = 0.08 dB

Peak SAR (extrapolated) = 0.0790 W/kg

SAR(1 g) = 0.040 W/kg; SAR(10 g) = 0.018 W/kg

Maximum value of SAR (measured) = 0.0447 W/kg

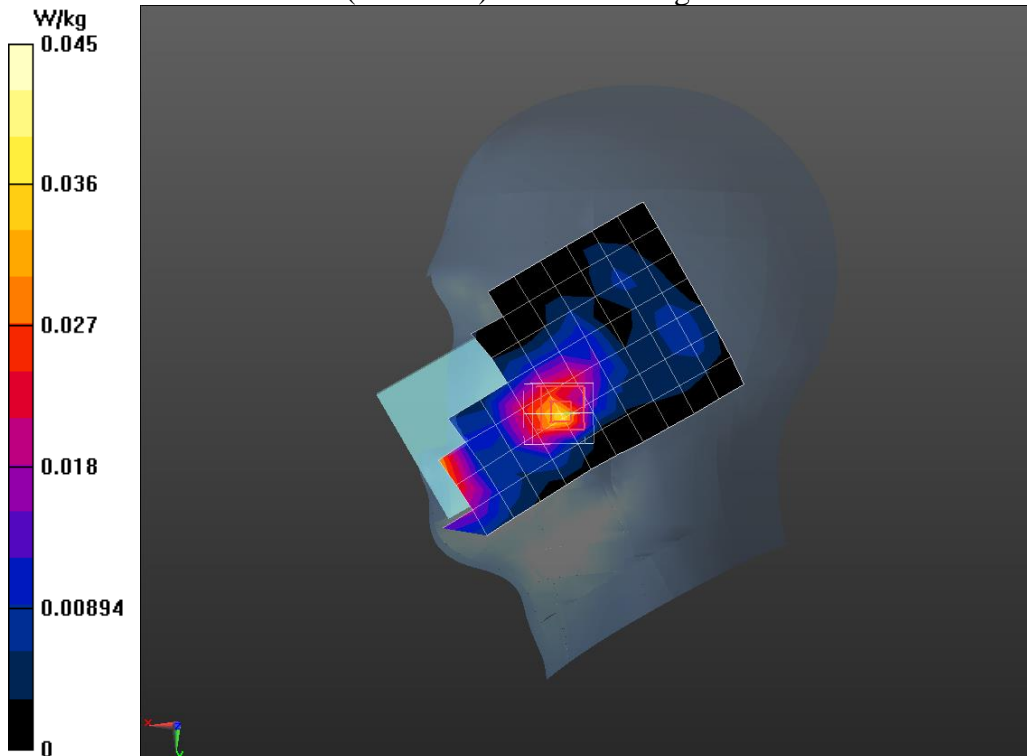


Fig A.23

LTE Band30 Body Bottom 10mm Hotspot

Date/Time: 2022/5/27

Electronics: DAE4 Sn797

Medium: Head 2300MHz

Medium parameters used: $f = 2310$ MHz; $\sigma = 1.722$ S/m; $\epsilon_r = 39.958$; $\rho = 1000$ kg/m³

Ambient Temperature: 22.5°C Liquid Temperature: 22.0°C

Communication System: LTE band30 (0); Frequency: 2310 MHz; Duty Cycle: 1:1

Probe: EX3DV4 - SN7401ConvF(8.2, 8.2, 8.2)

Area Scan (7x6x1): Measurement grid: dx=12mm, dy=12mm

Maximum value of SAR (measured) = 0.879 W/kg

Zoom Scan (7x7x7)/Cube 0: Measurement grid: dx=5mm, dy=5mm, dz=5mm

Reference Value = 19.27 V/m; Power Drift = -0.06 dB

Peak SAR (extrapolated) = 2.83 W/kg

SAR(1 g) = 1.17 W/kg; SAR(10 g) = 0.510 W/kg

Maximum value of SAR (measured) = 1.30 W/kg

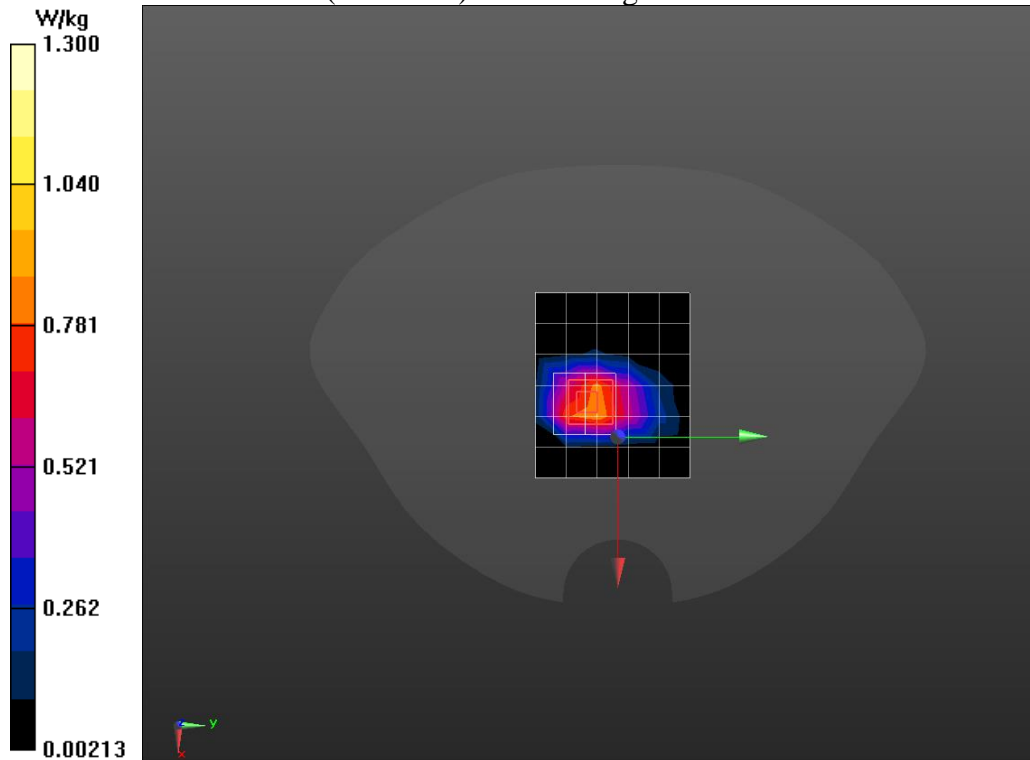


Fig A.24

LTE Band30 Body Bottom 15mm

Date/Time: 2022/5/27

Electronics: DAE4 Sn797

Medium: Head 2300MHz

Medium parameters used: $f = 2310$ MHz; $\sigma = 1.722$ S/m; $\epsilon_r = 39.958$; $\rho = 1000$ kg/m³

Ambient Temperature: 22.5°C Liquid Temperature: 22.0°C

Communication System: LTE band30; Frequency: 2310 MHz; Duty Cycle: 1:1

Probe: EX3DV4 - SN7401ConvF(8.2, 8.2, 8.2)

Area Scan (9x14x1):

Measurement grid: $dx=12$ mm, $dy=12$ mm

Maximum value of SAR (measured) = 0.505 W/kg

Zoom Scan (7x7x7)/Cube 0:

Measurement grid: $dx=5$ mm, $dy=5$ mm, $dz=5$ mm

Reference Value = 1.499 V/m; Power Drift = 0.02 dB

Peak SAR (extrapolated) = 1.38 W/kg

SAR(1 g) = 0.605 W/kg; SAR(10 g) = 0.280 W/kg

Maximum value of SAR (measured) = 0.671 W/kg

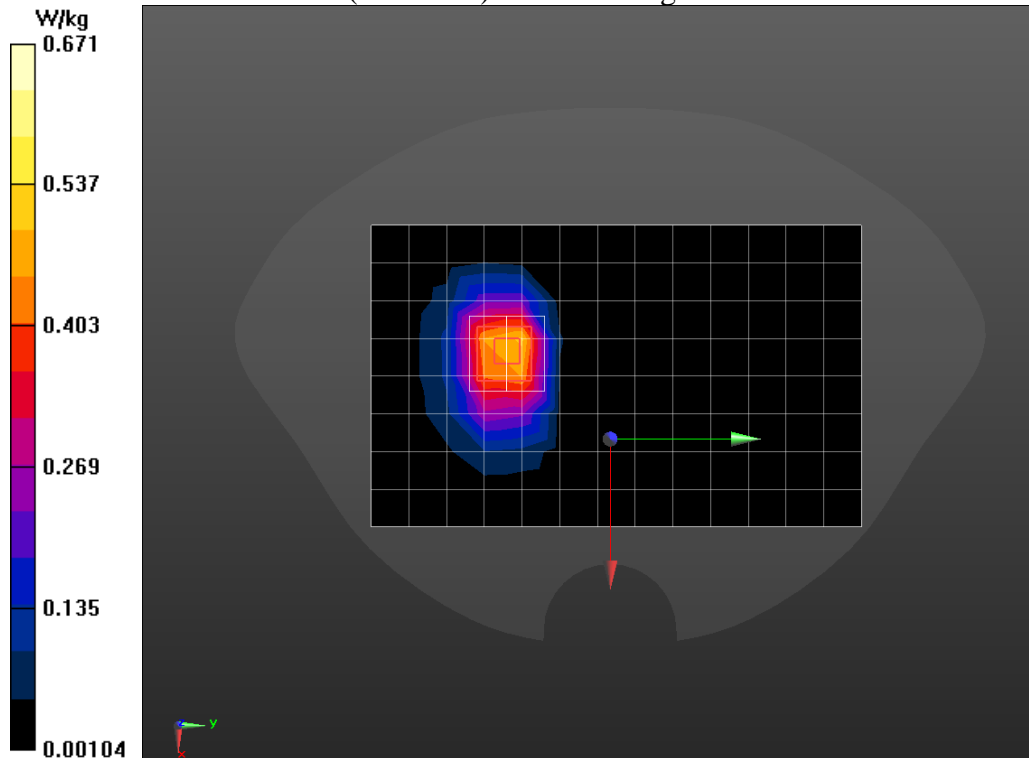


Fig A.25

LTE Band66 Cheek Right

Date/Time: 2022/5/26

Electronics: DAE4 Sn797

Medium: Head 1750MHz

Medium parameters used: $f = 1720$ MHz; $\sigma = 1.325$ S/m; $\epsilon_r = 41.269$; $\rho = 1000$ kg/m³

Ambient Temperature: 22.5°C Liquid Temperature: 22.0°C

Communication System: LTE Band 66 (0); Frequency: 1720 MHz; Duty Cycle: 1:1

Probe: EX3DV4 - SN7401ConvF(8.62, 8.62, 8.62)

Area Scan (8x14x1):

Measurement grid: $dx=15$ mm, $dy=15$ mm

Maximum value of SAR (measured) = 0.309 W/kg

Zoom Scan (5x5x7)/Cube 0:

Measurement grid: $dx=8$ mm, $dy=8$ mm, $dz=5$ mm

Reference Value = 6.572 V/m; Power Drift = 0.18 dB

Peak SAR (extrapolated) = 0.509 W/kg

SAR(1 g) = 0.302 W/kg; SAR(10 g) = 0.191 W/kg

Maximum value of SAR (measured) = 0.324 W/kg

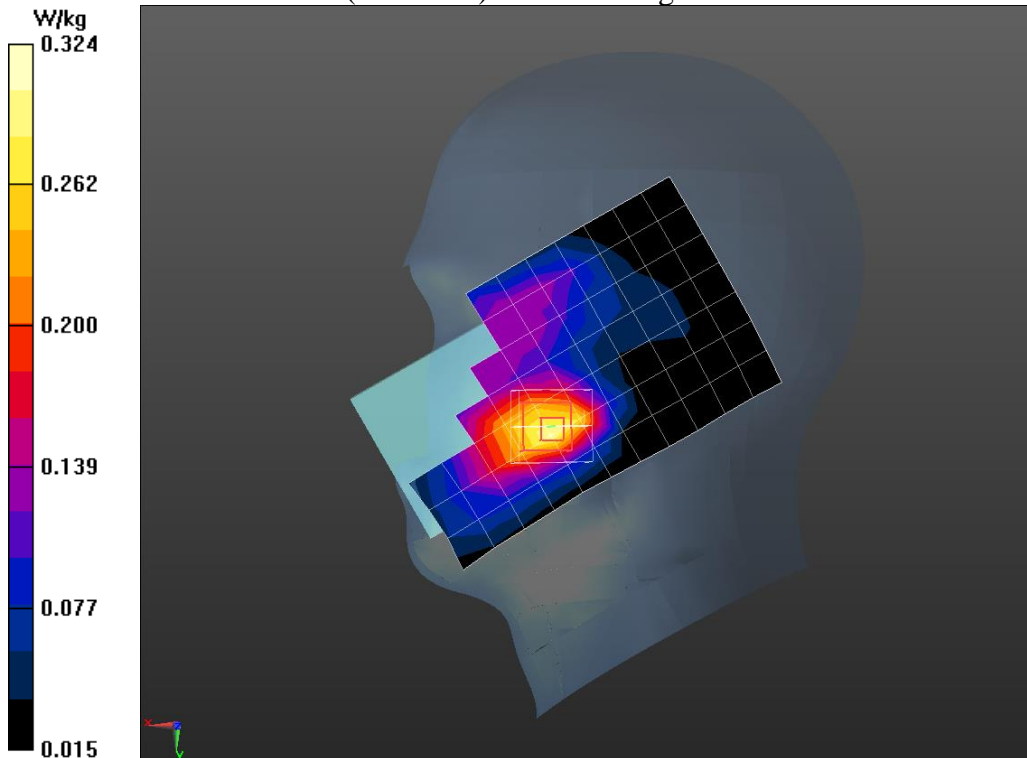


Fig A.26

LTE Band66 Body Rear 10mm Hotspot

Date/Time: 2022/5/26

Electronics: DAE4 Sn797

Medium: Head 1750MHz

Medium parameters used: $f = 1720$ MHz; $\sigma = 1.325$ S/m; $\epsilon_r = 41.269$; $\rho = 1000$ kg/m³

Ambient Temperature: 22.5°C Liquid Temperature: 22.0°C

Communication System: LTE Band 66; Frequency: 1720 MHz; Duty Cycle: 1:1

Probe: EX3DV4 - SN7401ConvF(8.62, 8.62, 8.62)

Area Scan (9x14x1):

Measurement grid: dx=15mm, dy=15mm

Maximum value of SAR (measured) = 0.574 W/kg

Zoom Scan (5x5x7)/Cube 0:

Measurement grid: dx=8mm, dy=8mm, dz=5mm

Reference Value = 15.75 V/m; Power Drift = -0.03 dB

Peak SAR (extrapolated) = 0.831 W/kg

SAR(1 g) = 0.472 W/kg; SAR(10 g) = 0.278 W/kg

Maximum value of SAR (measured) = 0.519 W/kg

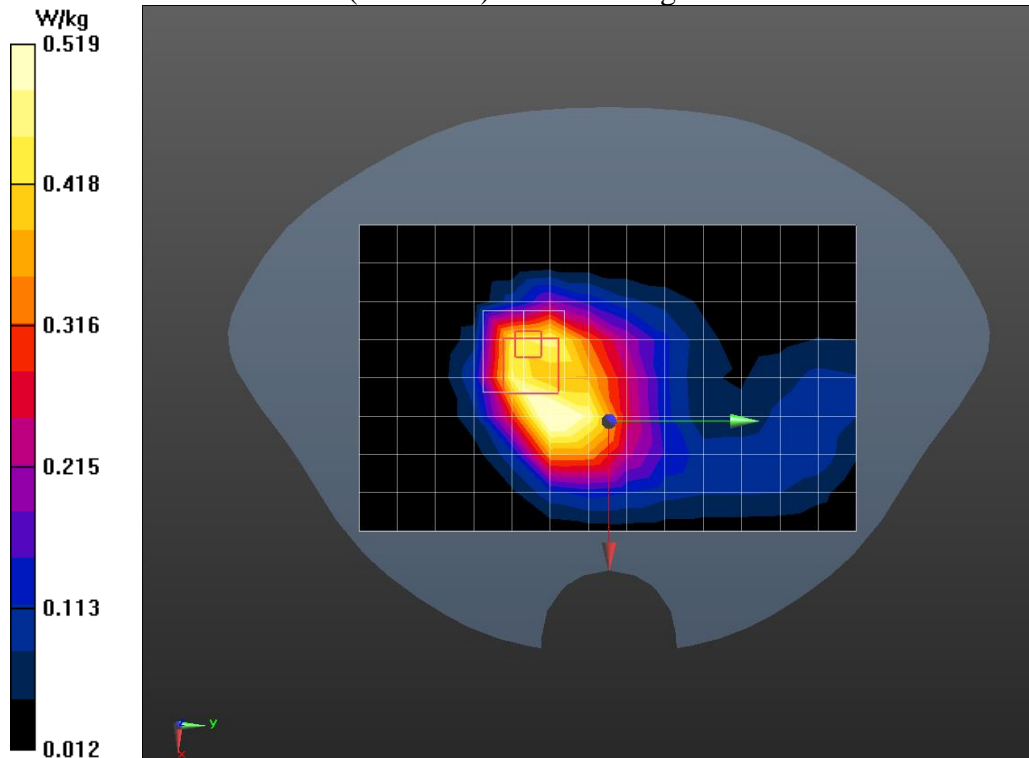


Fig A.27

LTE Band66 Body Rear 15mm

Date/Time: 2022/5/26

Electronics: DAE4 Sn797

Medium: Head 1750MHz

Medium parameters used: $f = 1720$ MHz; $\sigma = 1.325$ S/m; $\epsilon_r = 41.269$; $\rho = 1000$ kg/m³

Ambient Temperature: 22.5°C Liquid Temperature: 22.0°C

Communication System: LTE Band 66 ; Frequency: 1720 MHz; Duty Cycle: 1:1

Probe: EX3DV4 - SN7401ConvF(8.62, 8.62, 8.62)

Area Scan (9x14x1):

Measurement grid: dx=15mm, dy=15mm

Maximum value of SAR (measured) = 0.287 W/kg

Zoom Scan (5x5x7)/Cube 0:

Measurement grid: dx=8mm, dy=8mm, dz=5mm

Reference Value = 10.60 V/m; Power Drift = 0.01 dB

Peak SAR (extrapolated) = 0.427 W/kg

SAR(1 g) = 0.298 W/kg; SAR(10 g) = 0.197 W/kg

Maximum value of SAR (measured) = 0.321 W/kg

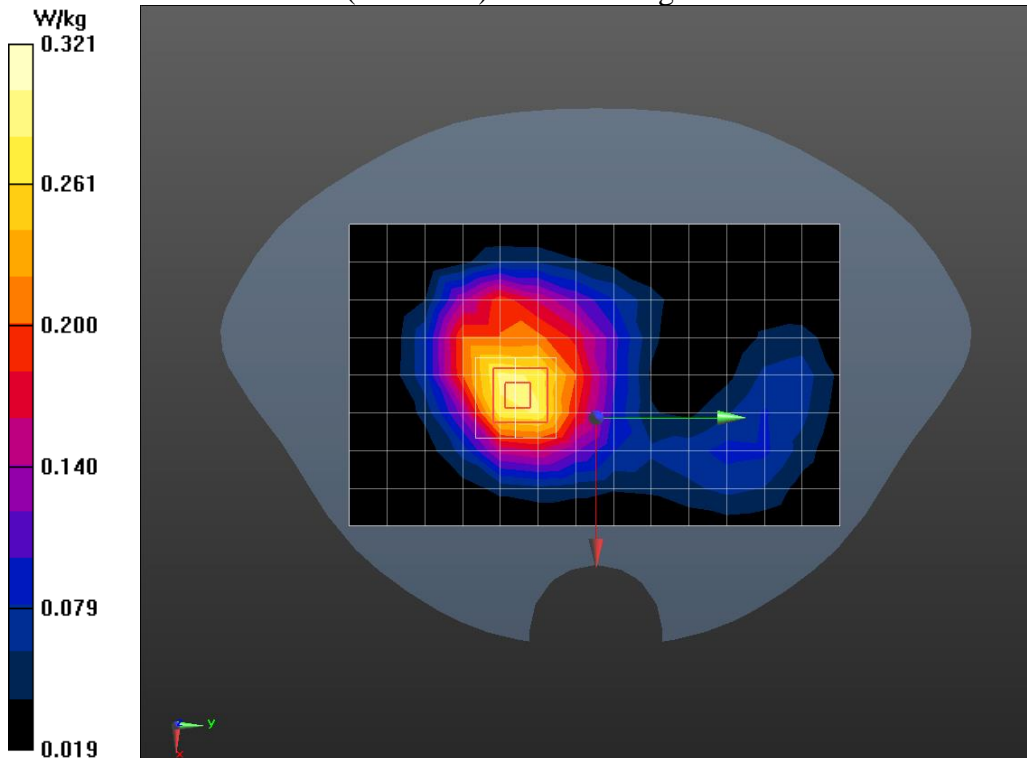


Fig A.28

Bluetooth2.4G Cheek Right

Date/Time: 2022/5/27

Electronics: DAE4 SN797

Medium: Head 2450MHz

Medium parameters used: $f = 2480 \text{ MHz}$; $\sigma = 1.894 \text{ S/m}$; $\epsilon_r = 38.776$; $\rho = 1000 \text{ kg/m}^3$

Ambient Temperature: 22.5°C Liquid Temperature: 22.0°C

Communication System: Bluetooth 2.4G (0); Frequency: 2480 MHz; Duty Cycle: 1:1

Probe: EX3DV4 - SN7401ConvF(7.9, 7.9, 7.9)

Area Scan (8x14x1): Measurement grid: $dx=12\text{mm}$, $dy=12\text{mm}$

Maximum value of SAR (measured) = 0.0456 W/kg

Zoom Scan (7x7x7)/Cube 0: Measurement grid: $dx=5\text{mm}$, $dy=5\text{mm}$, $dz=5\text{mm}$

Reference Value = 2.662 V/m; Power Drift = -0.10 dB

Peak SAR (extrapolated) = 0.147 W/kg

SAR(1 g) = 0.050 W/kg; SAR(10 g) = 0.022 W/kg

Maximum value of SAR (measured) = 0.0531 W/kg

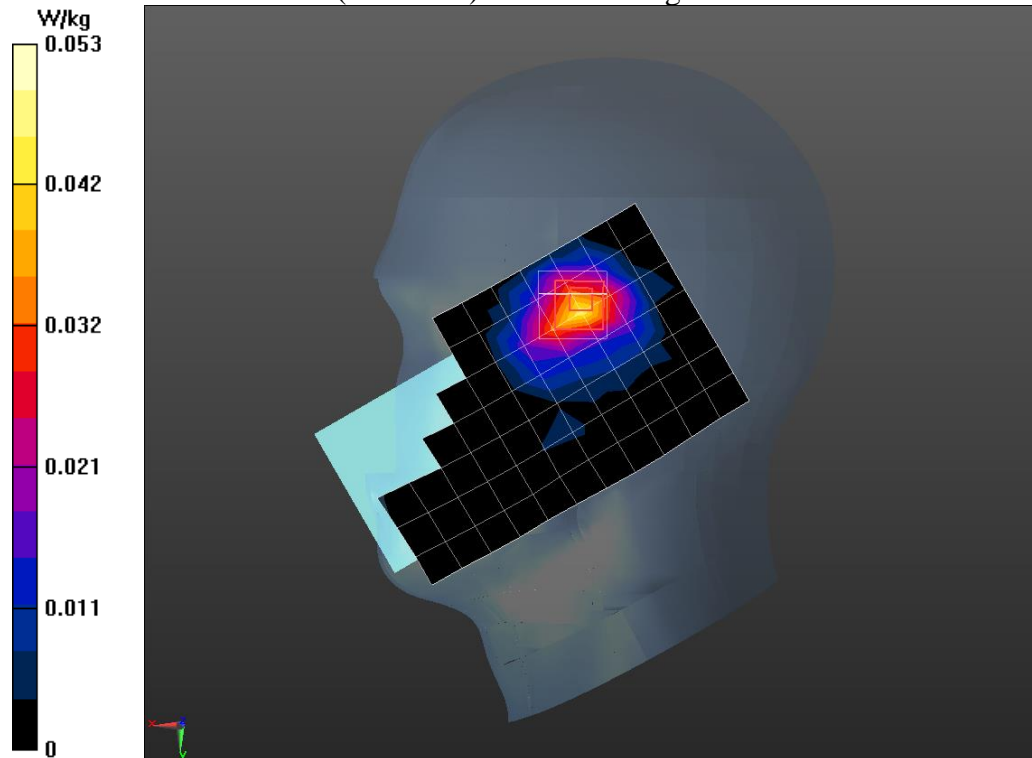


Fig A.29

Bluetooth2.4G Body Rear 10mm

Date/Time: 2022/5/27

Electronics: DAE4 SN797

Medium: Head 2450MHz

Medium parameters used: $f = 2480 \text{ MHz}$; $\sigma = 1.894 \text{ S/m}$; $\epsilon_r = 38.776$; $\rho = 1000 \text{ kg/m}^3$ Ambient Temperature: 22.5°C Liquid Temperature: 22.0°C

Communication System: Bluetooth 2.4G (0); Frequency: 2480 MHz; Duty Cycle: 1:1

Probe: EX3DV4 - SN7401ConvF(7.9, 7.9, 7.9)

Area Scan (8x13x1): Measurement grid: $dx=12\text{mm}$, $dy=12\text{mm}$

Maximum value of SAR (measured) = 0.0164 W/kg

Zoom Scan (7x7x7)/Cube 0: Measurement grid: $dx=5\text{mm}$, $dy=5\text{mm}$, $dz=5\text{mm}$

Reference Value = 1.369 V/m; Power Drift = -0.06 dB

Peak SAR (extrapolated) = 0.0600 W/kg

SAR(1 g) = 0.019 W/kg; SAR(10 g) = 0.0086 W/kg

Maximum value of SAR (measured) = 0.0199 W/kg

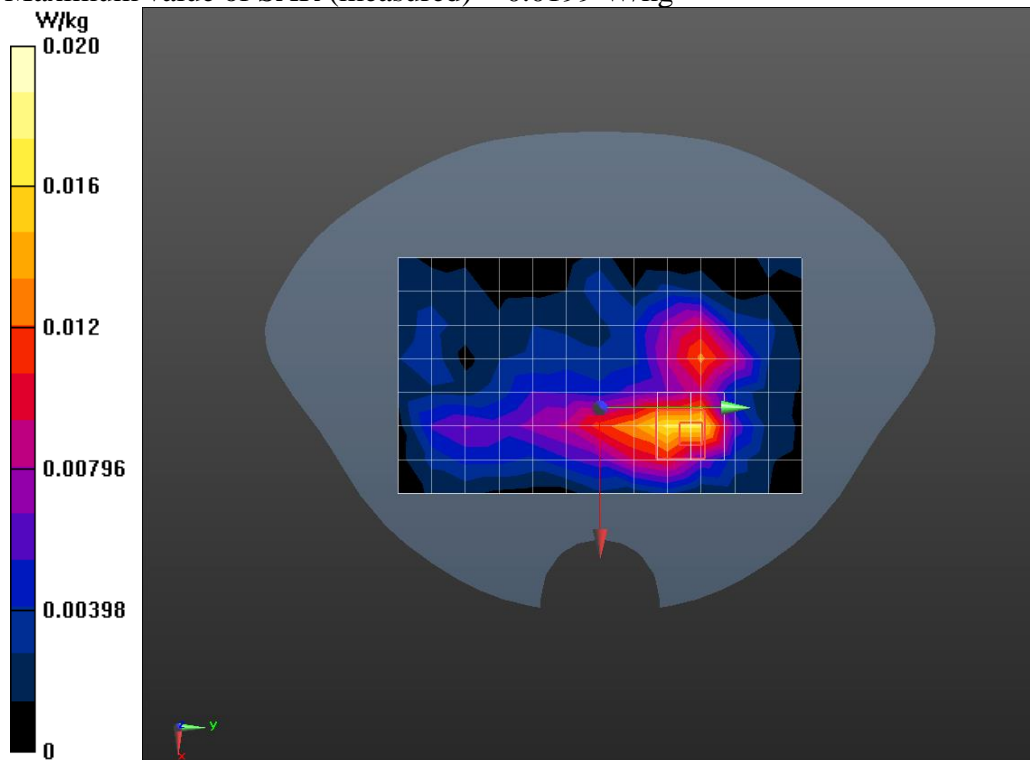


Fig A.30

Bluetooth2.4G Body Rear 15mm

Date/Time: 2022/5/27

Electronics: DAE4 SN797

Medium:Head 2450MHz

Medium parameters used: $f = 2480 \text{ MHz}$; $\sigma = 1.894 \text{ S/m}$; $\epsilon_r = 38.776$; $\rho = 1000 \text{ kg/m}^3$

Ambient Temperature:22.5°C Liquid Temperature:22.0°C

Communication System: Bluetooth 2.4G (0); Frequency: 2480 MHz; Duty Cycle: 1:1

Probe: EX3DV4 -SN7401ConvF(7.9, 7.9, 7.9)

Area Scan (8x13x1): Measurement grid: $dx=12\text{mm}$, $dy=12\text{mm}$

Maximum value of SAR (measured) = 0.00993 W/kg

Zoom Scan (7x7x7)/Cube 0: Measurement grid: $dx=5\text{mm}$, $dy=5\text{mm}$, $dz=5\text{mm}$

Reference Value = 0.9050 V/m; Power Drift = 0.03 dB

Peak SAR (extrapolated) = 0.0280 W/kg

SAR(1 g) = 0.010 W/kg; SAR(10 g) = 0.00514 W/kg

Maximum value of SAR (measured) = 0.0120 W/kg

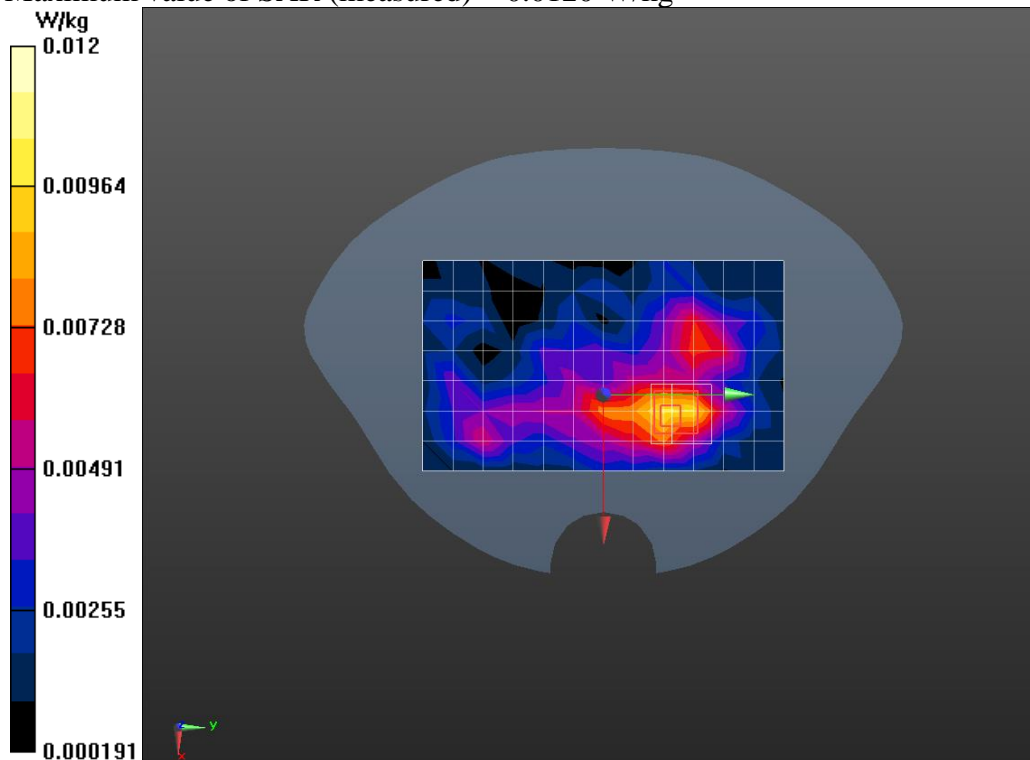


Fig A.31

WiFi 2.4G Cheek Right

Date/Time: 2022/5/27

Electronics: DAE4 SN797

Medium: Head 2450MHz

Medium parameters used: $f = 2437$ MHz; $\sigma = 1.847$ S/m; $\epsilon_r = 38.943$; $\rho = 1000$ kg/m³

Ambient Temperature: 22.5°C Liquid Temperature: 22.0°C

Communication System: Wi-Fi 2.4G (0); Frequency: 2437 MHz; Duty Cycle: 1:1

Probe: EX3DV4 - SN7401ConvF(7.9, 7.9, 7.9)

Area Scan (8x14x1): Measurement grid: dx=12mm, dy=12mm

Maximum value of SAR (measured) = 0.225 W/kg

Zoom Scan (7x7x7)/Cube 0: Measurement grid: dx=5mm, dy=5mm, dz=5mm

Reference Value = 6.277 V/m; Power Drift = 0.09 dB

Peak SAR (extrapolated) = 0.665 W/kg

SAR(1 g) = 0.261 W/kg; SAR(10 g) = 0.116 W/kg

Maximum value of SAR (measured) = 0.282 W/kg

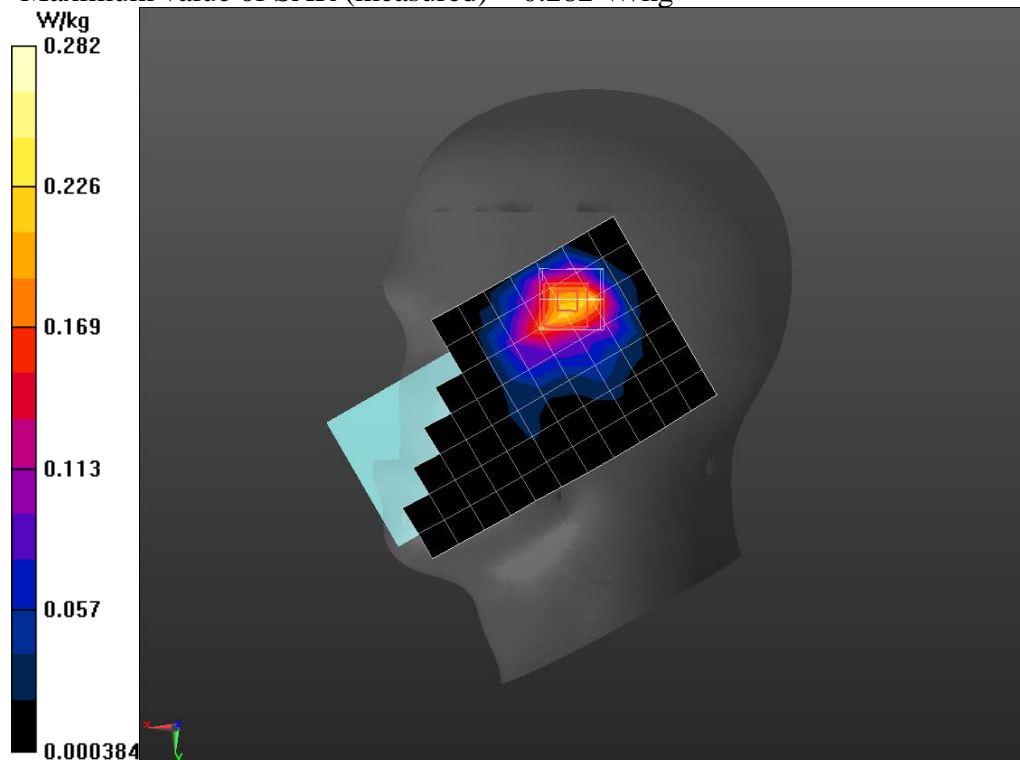


Fig A.32

WiFi 2.4G Body Rear 10mm

Date/Time: 2022/5/27

Electronics: DAE4 SN797

Medium: Head 2450MHz

Medium parameters used: $f = 2437$ MHz; $\sigma = 1.847$ S/m; $\epsilon_r = 38.943$; $\rho = 1000$ kg/m³

Ambient Temperature: 22.5°C Liquid Temperature: 22.0°C

Communication System: Wi-Fi 2.4G (0); Frequency: 2437 MHz; Duty Cycle: 1:1

Probe: EX3DV4 - SN7401ConvF(7.9, 7.9, 7.9)

Area Scan (9x14x1): Measurement grid: dx=12mm, dy=12mm

Maximum value of SAR (measured) = 0.104 W/kg

Zoom Scan (7x7x7)/Cube 0: Measurement grid: dx=5mm, dy=5mm, dz=5mm

Reference Value = 4.021 V/m; Power Drift = 0.09 dB

Peak SAR (extrapolated) = 0.307 W/kg

SAR(1 g) = 0.118 W/kg; SAR(10 g) = 0.053 W/kg

Maximum value of SAR (measured) = 0.128 W/kg

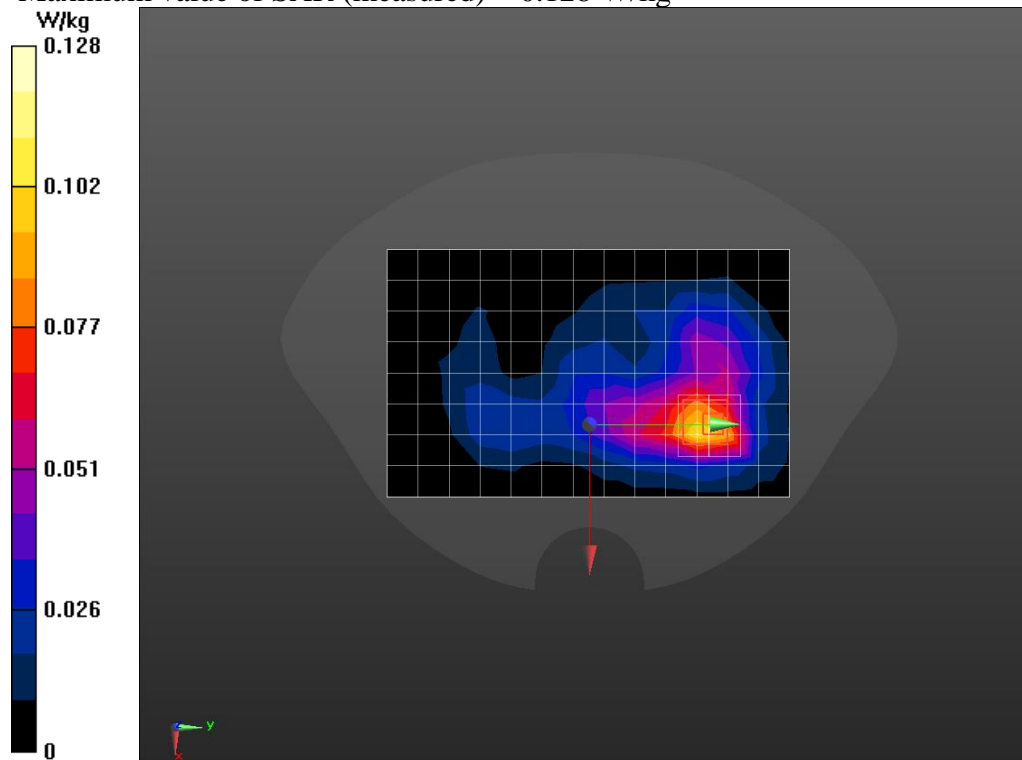


Fig A.33

WiFi 2.4G Body Rear 15mm

Date/Time: 2022/5/27

Electronics: DAE4 SN797

Medium: Head 2450MHz

Medium parameters used: $f = 2437 \text{ MHz}$; $\sigma = 1.847 \text{ S/m}$; $\epsilon_r = 38.943$; $\rho = 1000 \text{ kg/m}^3$ Ambient Temperature: 22.5°C Liquid Temperature: 22.0°C

Communication System: Wi-Fi 2.4G (0); Frequency: 2437 MHz; Duty Cycle: 1:1

Probe: EX3DV4 - SN7401ConvF(7.9, 7.9, 7.9)

Area Scan (8x13x1): Measurement grid: $dx=12\text{mm}$, $dy=12\text{mm}$

Maximum value of SAR (measured) = 0.0450 W/kg

Zoom Scan (7x7x7)/Cube 0: Measurement grid: $dx=5\text{mm}$, $dy=5\text{mm}$, $dz=5\text{mm}$

Reference Value = 2.527 V/m; Power Drift = 0.04 dB

Peak SAR (extrapolated) = 0.116 W/kg

SAR(1 g) = 0.048 W/kg; SAR(10 g) = 0.023 W/kg

Maximum value of SAR (measured) = 0.0506 W/kg

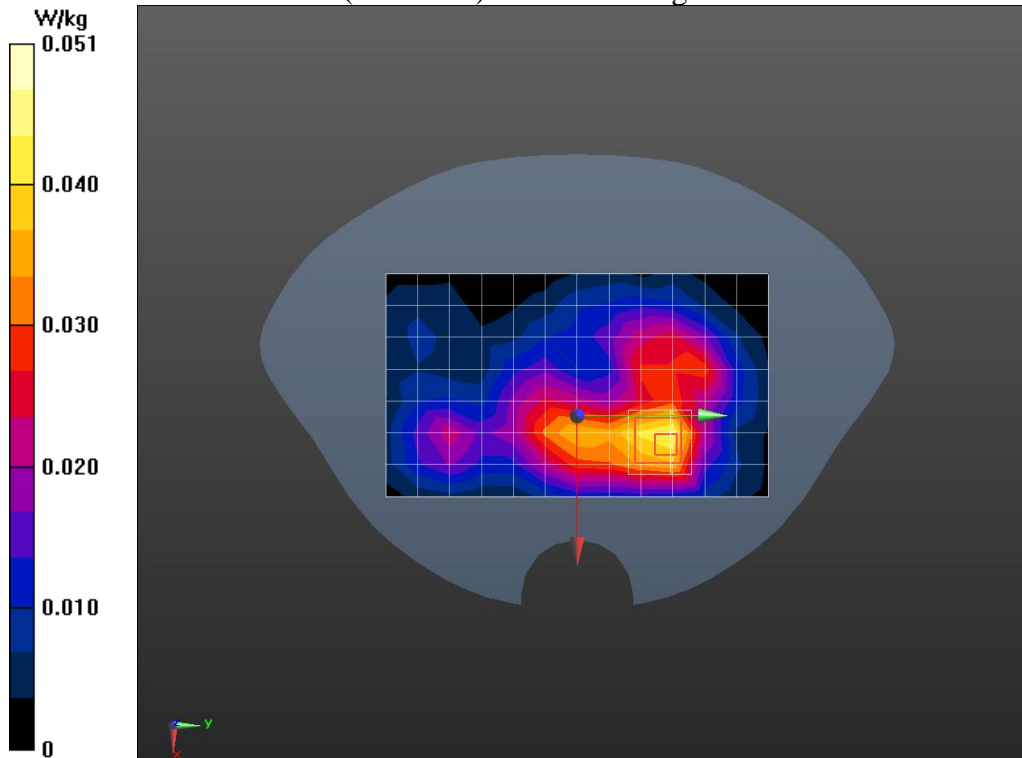


Fig A.34

ANNEX B. SYSTEM VALIDATION RESULTS

System Verification 750MHz

Date/Time: 2022/5/30

Electronics: DAE4 Sn797

Medium: Dipole 750MHz

Medium parameters used: $f = 750 \text{ MHz}$; $\sigma = 0.894 \text{ S/m}$; $\epsilon_r = 42.101$; $\rho = 1000 \text{ kg/m}^3$

Ambient Temperature: 22.5°C Liquid Temperature: 22.0°C

Communication System: CW (0); Frequency: 750 MHz; Duty Cycle: 1:1

Probe: EX3DV4 - SN7401ConvF(10.59 10.59, 10.59)

System Verification /Area Scan (7x21x1):

Measurement grid: $dx=10\text{mm}$, $dy=10\text{mm}$

Maximum value of SAR (measured) = 2.06 W/kg

System Verification /Zoom Scan (7x7x7)/Cube 0:

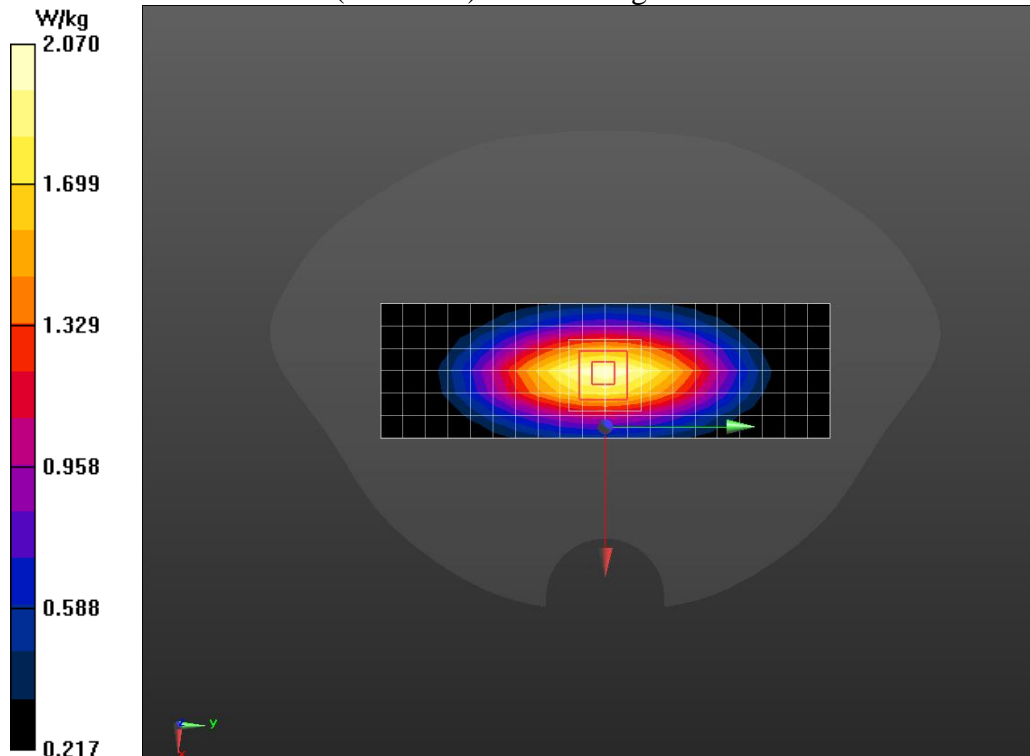
Measurement grid: $dx=5\text{mm}$, $dy=5\text{mm}$, $dz=5\text{mm}$

Reference Value = 48.55 V/m; Power Drift = -0.12 dB

Peak SAR (extrapolated) = 2.80 W/kg

SAR(1 g) = 1.92 W/kg; SAR(10 g) = 1.29 W/kg

Maximum value of SAR (measured) = 2.07 W/kg



Chongqing Academy of Information and Communication Technology

Address: No. 8, Yuma Road, Chayuan New City, Nan'an District, Chongqing, P. R. China, 401336
Tel: 0086-23-88069965

FAX: 0086-23-88608777

System Verification 835MHz

Date/Time: 2022/5/31

Electronics: DAE4 Sn797

Medium: Dipole 835MHz

Medium parameters used: $f = 835 \text{ MHz}$; $\sigma = 0.915 \text{ S/m}$; $\epsilon_r = 43.156$; $\rho = 1000 \text{ kg/m}^3$

Ambient Temperature: 22.5°C Liquid Temperature: 22.0°C

Communication System: CW (0); Frequency: 835 MHz; Duty Cycle: 1:1

Probe: EX3DV4 - SN7401ConvF(10.17, 10.17, 10.17)

System Verification MHz/Area Scan (5x18x1):

Measurement grid: $dx=10\text{mm}$, $dy=10\text{mm}$

Maximum value of SAR (measured) = 2.52 W/kg

System Verification /Zoom Scan (7x7x7)/Cube 0:

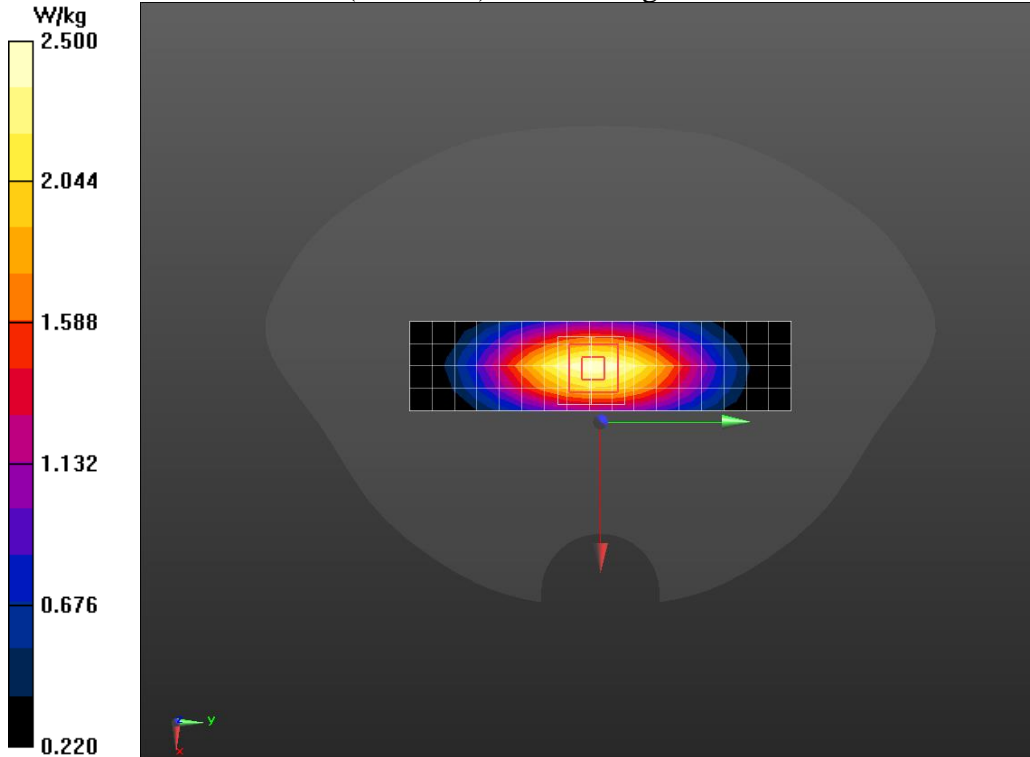
Measurement grid: $dx=5\text{mm}$, $dy=5\text{mm}$, $dz=5\text{mm}$

Reference Value = 52.77 V/m; Power Drift = 0.00 dB

Peak SAR (extrapolated) = 3.46 W/kg

SAR(1 g) = 2.32 W/kg; SAR(10 g) = 1.52 W/kg

Maximum value of SAR (measured) = 2.50 W/kg



Chongqing Academy of Information and Communication Technology

Address: No. 8, Yuma Road, Chayuan New City, Nan'an District, Chongqing, P. R. China, 401336
Tel: 0086-23-88069965

FAX: 0086-23-88608777

System Verification 835MHz

Date/Time: 2022/6/1

Electronics: DAE4 Sn797

Medium: Head 835MHz

Medium parameters used: $f = 835 \text{ MHz}$; $\sigma = 0.902 \text{ S/m}$; $\epsilon_r = 40.993$; $\rho = 1000 \text{ kg/m}^3$

Ambient Temperature: 22.5°C Liquid Temperature: 22.0°C

Communication System: CW (0); Frequency: 835 MHz; Duty Cycle: 1:1

Probe: EX3DV4 - SN7401ConvF(10.17, 10.17, 10.17)

System Verification /Area Scan (5x18x1):

Measurement grid: $dx=10\text{mm}$, $dy=10\text{mm}$

Maximum value of SAR (measured) = 2.49 W/kg

System Verification /Zoom Scan (7x7x7)/Cube 0:

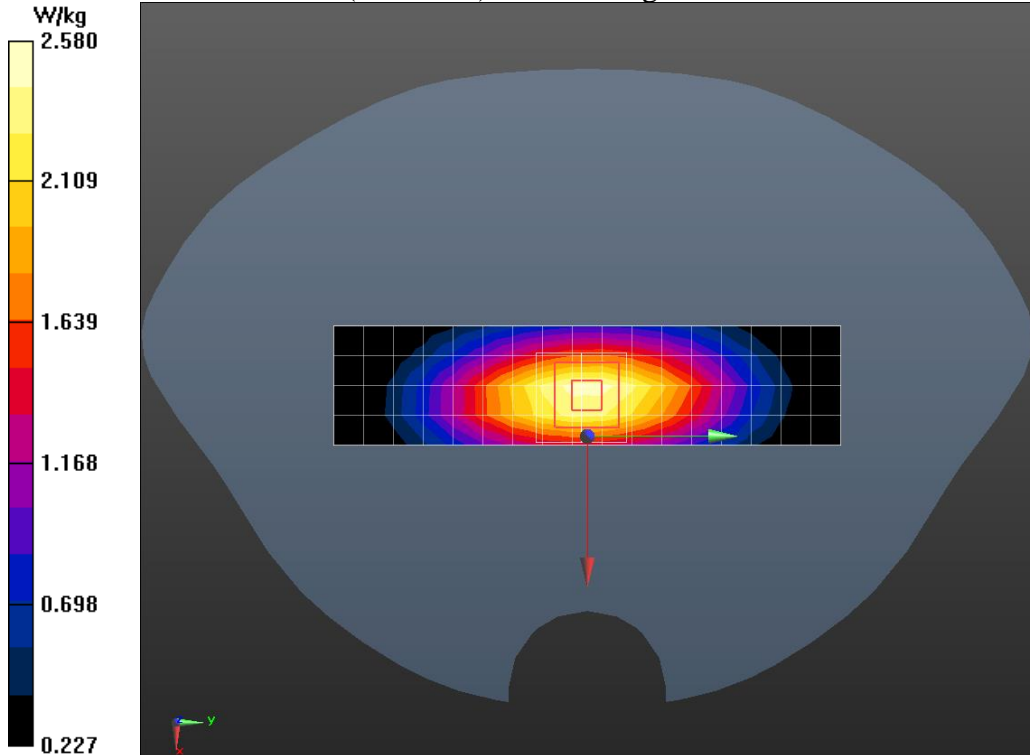
Measurement grid: $dx=5\text{mm}$, $dy=5\text{mm}$, $dz=5\text{mm}$

Reference Value = 53.43 V/m; Power Drift = -0.13 dB

Peak SAR (extrapolated) = 3.58 W/kg

SAR(1 g) = 2.39 W/kg; SAR(10 g) = 1.55 W/kg

Maximum value of SAR (measured) = 2.58 W/kg



Chongqing Academy of Information and Communication Technology

Address: No. 8, Yuma Road, Chayuan New City, Nan'an District, Chongqing, P. R. China, 401336
Tel: 0086-23-88069965

FAX: 0086-23-88608777

System Verification 1750MHz

Date/Time: 2022/5/25

Electronics: DAE4 Sn797

Medium:Dipole 1750MHz

Medium parameters used: $f = 1750$ MHz; $\sigma = 1.361$ S/m; $\epsilon_r = 41.103$; $\rho = 1000$ kg/m³

Ambient Temperature:22.5°C Liquid Temperature:22.0°C

Communication System: CW (0); Frequency: 1750 MHz; Duty Cycle: 1:1

Probe: EX3DV4 - SN7401ConvF(8.62, 8.62, 8.62)

System Verification MHz/Area Scan (6x11x1):

Measurement grid: dx=10mm, dy=10mm

Maximum value of SAR (measured) = 9.51 W/kg

System Verification /Zoom Scan (7x7x7)/Cube 0:

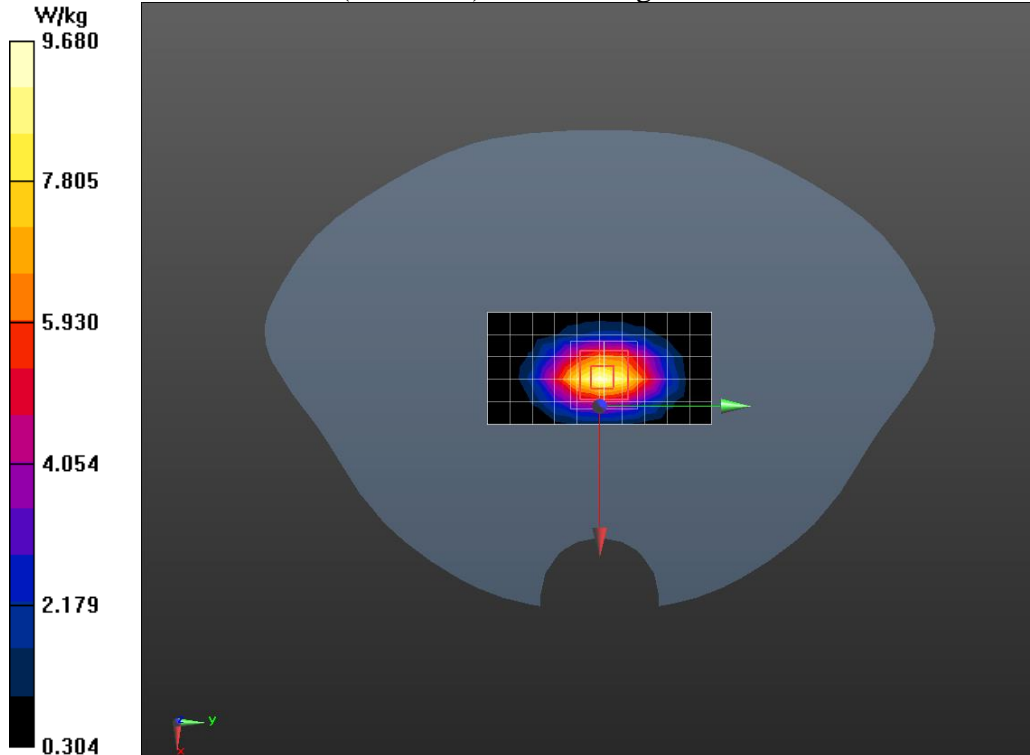
Measurement grid: dx=5mm, dy=5mm, dz=5mm

Reference Value = 81.33 V/m; Power Drift = -0.07 dB

Peak SAR (extrapolated) = 15.0 W/kg

SAR(1 g) = 8.63 W/kg; SAR(10 g) = 4.73 W/kg

Maximum value of SAR (measured) = 9.68 W/kg



Chongqing Academy of Information and Communication Technology

Address: No. 8,Yuma Road, Chayuan New City, Nan'an District, Chongqing, P. R. China,401336
Tel: 0086-23-88069965

FAX:0086-23-88608777

System Verification 1750MHz

Date/Time: 2022/5/26

Electronics: DAE4 Sn797

Medium: 1750MHz

Medium parameters used: $f = 1750$ MHz; $\sigma = 1.361$ S/m; $\epsilon_r = 41.103$; $\rho = 1000$ kg/m³

Ambient Temperature: 22.5°C Liquid Temperature: 22.0°C

Communication System: CW (0); Frequency: 1750 MHz; Duty Cycle: 1:1

Probe: EX3DV4 - SN7401ConvF(8.62, 8.62, 8.62)

System Verification /Area Scan (6x11x1):

Measurement grid: dx=10mm, dy=10mm

Maximum value of SAR (measured) = 10.1 W/kg

System Verification /Zoom Scan (7x7x7)/Cube 0:

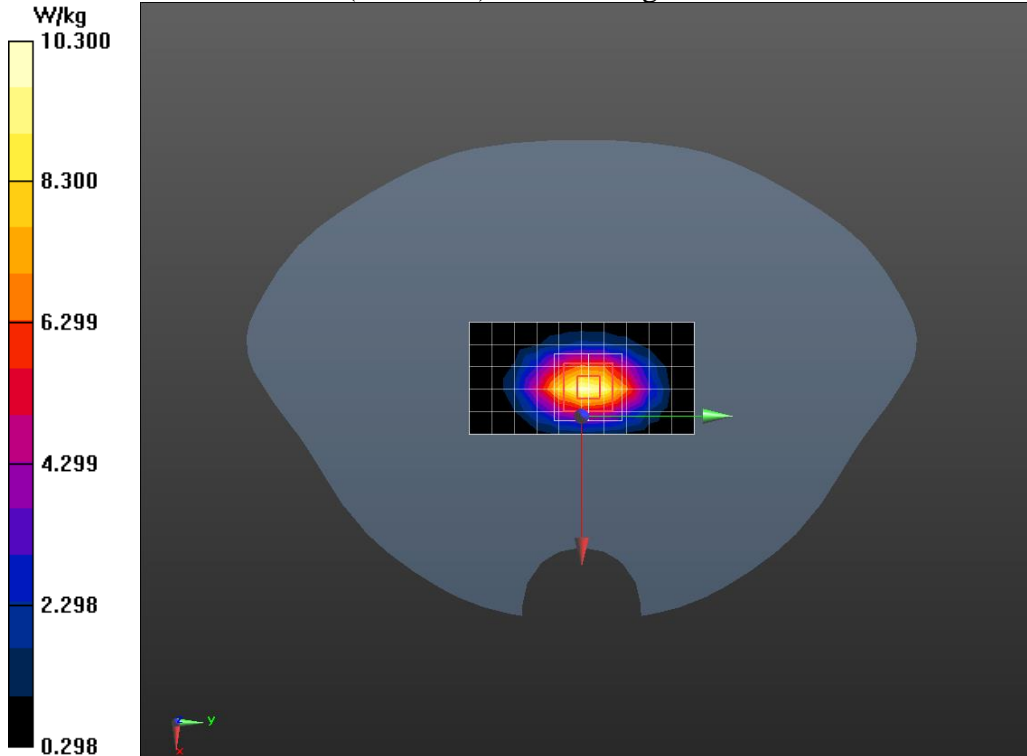
Measurement grid: dx=5mm, dy=5mm, dz=5mm

Reference Value = 83.28 V/m; Power Drift = -0.09 dB

Peak SAR (extrapolated) = 16.1 W/kg

SAR(1 g) = 9.13 W/kg; SAR(10 g) = 4.96 W/kg

Maximum value of SAR (measured) = 10.3 W/kg



Chongqing Academy of Information and Communication Technology

Address: No. 8, Yuma Road, Chayuan New City, Nan'an District, Chongqing, P. R. China, 401336
Tel: 0086-23-88069965

FAX: 0086-23-88608777

System Verification 1900MHz

Date/Time: 2022/5/23

Electronics: DAE4 Sn797

Medium: Dipole 1900MHz

Medium parameters used: $f = 1900$ MHz; $\sigma = 1.426$ S/m; $\epsilon_r = 39.218$; $\rho = 1000$ kg/m³

Ambient Temperature: 22.5°C Liquid Temperature: 22.0°C

Communication System: CW (0); Frequency: 1900 MHz; Duty Cycle: 1:1

Probe: EX3DV4 - SN7401ConvF(8.35, 8.35, 8.35)

System Verification /Area Scan (5x9x1):

Measurement grid: dx=10mm, dy=10mm

Maximum value of SAR (measured) = 9.44 W/kg

System Verification /Zoom Scan (7x7x7)/Cube 0:

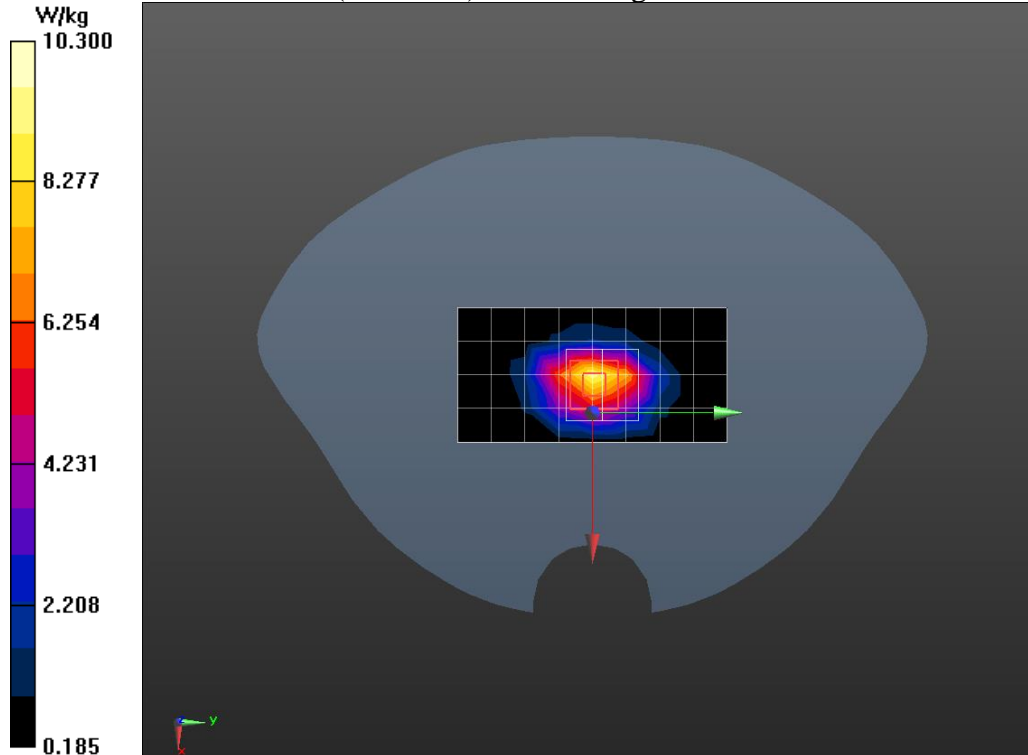
Measurement grid: dx=5mm, dy=5mm, dz=5mm

Reference Value = 82.22 V/m; Power Drift = -0.15 dB

Peak SAR (extrapolated) = 16.6 W/kg

SAR(1 g) = 9.31 W/kg; SAR(10 g) = 4.94 W/kg

Maximum value of SAR (measured) = 10.3 W/kg



Chongqing Academy of Information and Communication Technology

Address: No. 8, Yuma Road, Chayuan New City, Nan'an District, Chongqing, P. R. China, 401336
Tel: 0086-23-88069965

FAX: 0086-23-88608777

System Verification 1900MHz

Date/Time: 2022/5/24

Electronics: DAE4 Sn797

Medium: 1900MHz

Medium parameters used: $f = 1900 \text{ MHz}$; $\sigma = 1.426 \text{ S/m}$; $\epsilon_r = 39.218$; $\rho = 1000 \text{ kg/m}^3$

Ambient Temperature: 22.5°C Liquid Temperature: 22.0°C

Communication System: CW (0); Frequency: 1900 MHz; Duty Cycle: 1:1

Probe: EX3DV4 - SN7401ConvF(8.35, 8.35, 8.35)

System Verification /Area Scan (5x9x1):

Measurement grid: $dx=10\text{mm}$, $dy=10\text{mm}$

Maximum value of SAR (measured) = 10.1 W/kg

System Verification /Zoom Scan (7x7x7)/Cube 0:

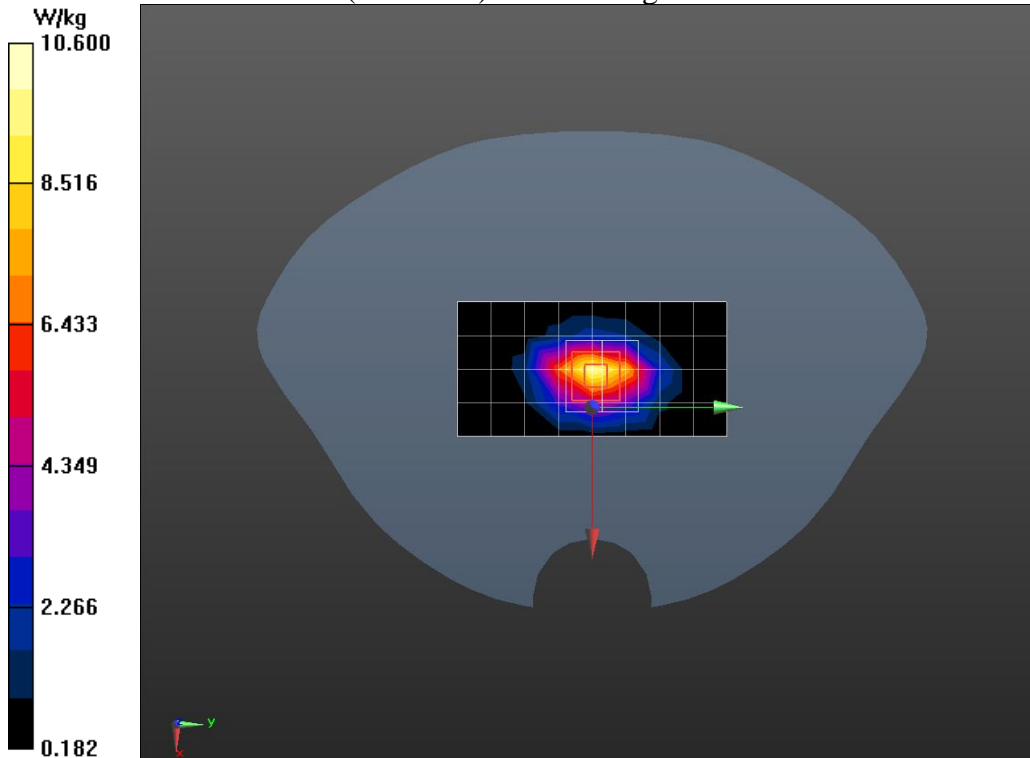
Measurement grid: $dx=5\text{mm}$, $dy=5\text{mm}$, $dz=5\text{mm}$

Reference Value = 84.59 V/m; Power Drift = -0.06 dB

Peak SAR (extrapolated) = 17.4 W/kg

SAR(1 g) = 9.57 W/kg; SAR(10 g) = 5.02 W/kg

Maximum value of SAR (measured) = 10.6 W/kg



Chongqing Academy of Information and Communication Technology

Address: No. 8, Yuma Road, Chayuan New City, Nan'an District, Chongqing, P. R. China, 401336
Tel: 0086-23-88069965

FAX: 0086-23-88608777

System Verification 2300MHz

Date/Time: 2022/5/27

Electronics: DAE4 Sn797

Medium: Dipole 2300MHz

Medium parameters used: $f = 2300$ MHz; $\sigma = 1.712$ S/m; $\epsilon_r = 39.99$; $\rho = 1000$ kg/m³

Ambient Temperature: 22.5°C Liquid Temperature: 22.0°C

Communication System: CW (0); Frequency: 2300 MHz; Duty Cycle: 1:1

Probe: EX3DV4 - SN7401ConvF(8.2, 8.2, 8.2)

System Verification /Area Scan (5x9x1):

Measurement grid: dx=10mm, dy=10mm

Maximum value of SAR (measured) = 13.7 W/kg

System Verification /Zoom Scan (7x7x7)/Cube 0:

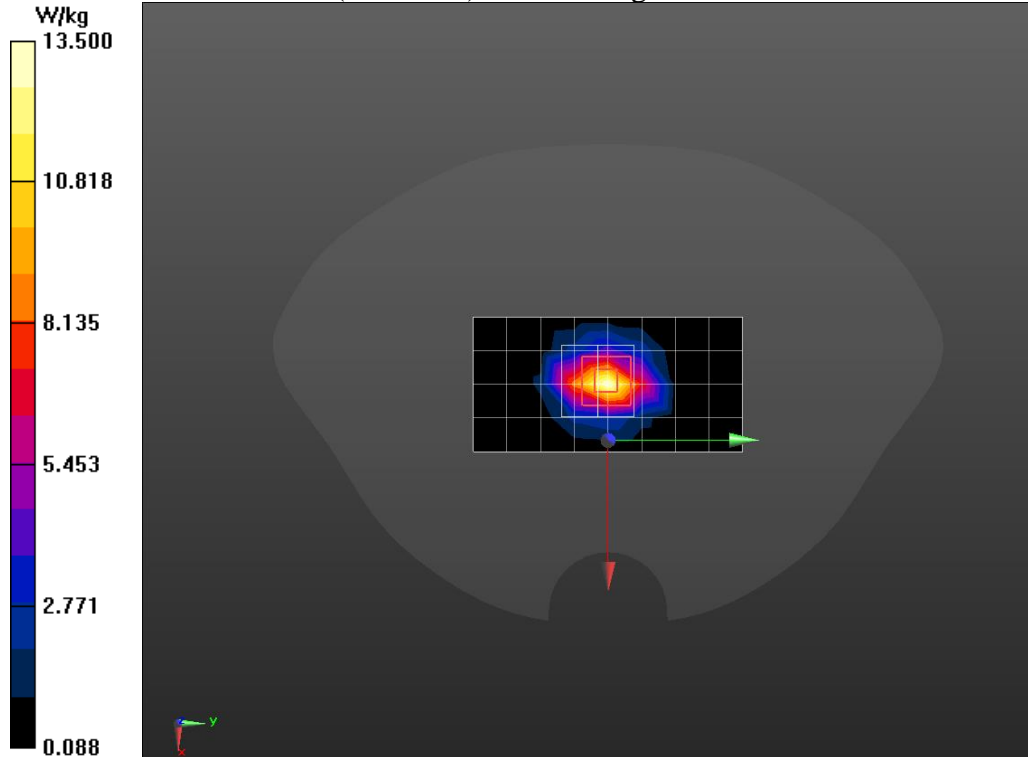
Measurement grid: dx=5mm, dy=5mm, dz=5mm

Reference Value = 89.90 V/m; Power Drift = 0.03 dB

Peak SAR (extrapolated) = 24.8 W/kg

SAR(1 g) = 12.2 W/kg; SAR(10 g) = 5.81 W/kg

Maximum value of SAR (measured) = 13.5 W/kg



Chongqing Academy of Information and Communication Technology

Address: No. 8, Yuma Road, Chayuan New City, Nan'an District, Chongqing, P. R. China, 401336
Tel: 0086-23-88069965

FAX: 0086-23-88608777

System Verification 2450MHz

Date/Time: 2022/6/2

Electronics: DAE4 Sn797

Medium: Dipole 2450MHZ

Medium parameters used: $f = 2450$ MHz; $\sigma = 1.86$ S/m; $\epsilon_r = 38.897$; $\rho = 1000$ kg/m³

Ambient Temperature: 22.5°C Liquid Temperature: 22.0°C

Communication System: CW (0); Frequency: 2450 MHz; Duty Cycle: 1:1

Probe: EX3DV4 - SN7401ConvF(7.9, 7.9, 7.9)

System Verification /Area Scan (6x9x1):

Measurement grid: dx=10mm, dy=10mm

Maximum value of SAR (measured) = 13.2 W/kg

System Verification /Zoom Scan (7x7x7)/Cube 0:

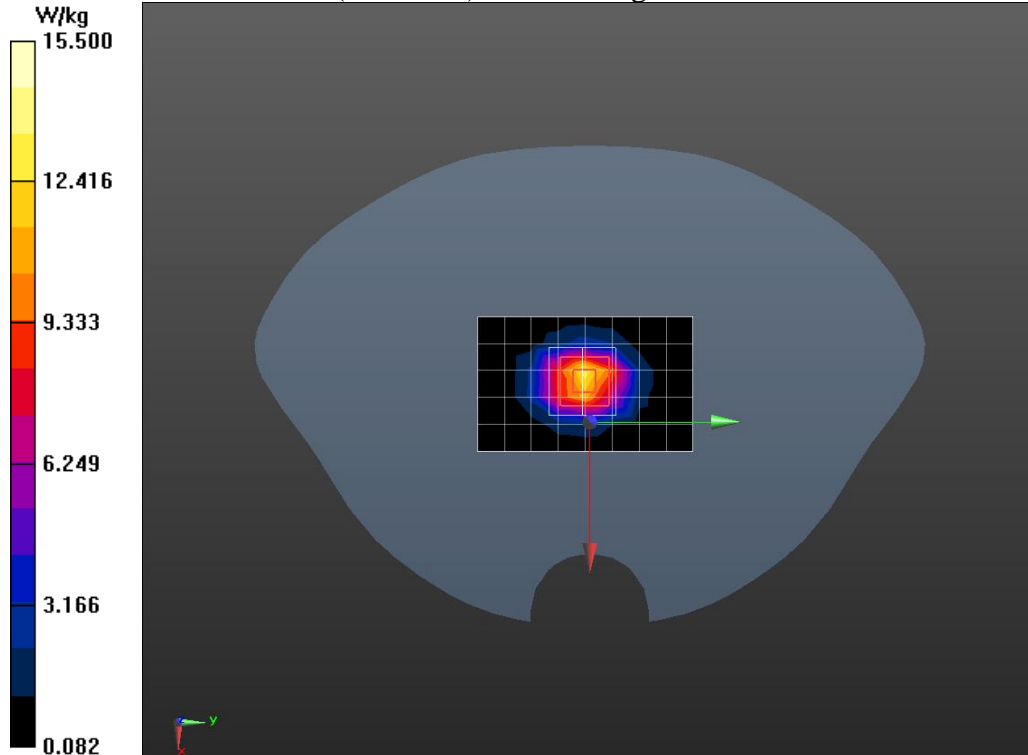
Measurement grid: dx=5mm, dy=5mm, dz=5mm

Reference Value = 91.70 V/m; Power Drift = -0.14 dB

Peak SAR (extrapolated) = 29.3 W/kg

SAR(1 g) = 13.6 W/kg; SAR(10 g) = 6.17 W/kg

Maximum value of SAR (measured) = 15.5 W/kg



Chongqing Academy of Information and Communication Technology

Address: No. 8, Yuma Road, Chayuan New City, Nan'an District, Chongqing, P. R. China, 401336

Tel: 0086-23-88069965


FAX: 0086-23-88608777

ANNEX C. CALIBRATION REPORT


 In Collaboration with TTL s p e a q CALIBRATION LABORATORY		 中国认可 国际互认 校准 CALIBRATION CNAS L0570	
Add: No.52 HuaYuanBei Road, Haidian District, Beijing, 100191, China Tel: +86-10-62304633-2512 Fax: +86-10-62304633-2504 E-mail: cttl@chinattl.com Http://www.chinattl.cn			
Client :		Certificate No: Z22-60163	
CALIBRATION CERTIFICATE			
Object	DAE4 - SN: 797		
Calibration Procedure(s)	FF-Z11-002-01 Calibration Procedure for the Data Acquisition Electronics (DAEx)		
Calibration date:	May 17, 2022		
This calibration Certificate documents the traceability to national standards, which realize the physical units of measurements(SI). The measurements and the uncertainties with confidence probability are given on the following pages and are part of the certificate.			
All calibrations have been conducted in the closed laboratory facility: environment temperature(22±3)°C and humidity<70%.			
Calibration Equipment used (M&TE critical for calibration)			
Primary Standards	ID #	Cal Date(Calibrated by, Certificate No.)	Scheduled Calibration
Process Calibrator 753	1971018	15-Jun-21 (CTTL, No.J21X04465)	Jun-22
Calibrated by:	Name	Function	 Signature
	Yu Zongying	SAR Test Engineer	
Reviewed by:	Lin Hao	SAR Test Engineer	
Approved by:	Qi Dianyuan	SAR Project Leader	
Issued: May 23, 2022 This calibration certificate shall not be reproduced except in full without written approval of the laboratory.			
Certificate No: Z22-60163		Page 1 of 3	

Chongqing Academy of Information and Communication Technology

Address: No. 8,Yuma Road, Chayuan New City, Nan'an District, Chongqing, P. R. China,401336
 Tel: 0086-23-88069965 FAX:0086-23-88608777



In Collaboration with
s p e a g
CALIBRATION LABORATORY



Add: No.52 HuaYuanBei Road, Haidian District, Beijing, 100191, China
Tel: +86-10-62304633-2512 Fax: +86-10-62304633-2504
E-mail: ctt@chinattl.com Http://www.chinattl.cn

Glossary:
DAE data acquisition electronics
Connector angle information used in DASY system to align probe sensor X to the robot coordinate system.

Methods Applied and Interpretation of Parameters:

- *DC Voltage Measurement:* Calibration Factor assessed for use in DASY system by comparison with a calibrated instrument traceable to national standards. The figure given corresponds to the full scale range of the voltmeter in the respective range.
- *Connector angle:* The angle of the connector is assessed measuring the angle mechanically by a tool inserted. Uncertainty is not required.
- The report provide only calibration results for DAE, it does not contain other performance test results.

Certificate No: Z22-60163Page 2 of 3



Add: No.52 HuaYuanBei Road, Haidian District, Beijing, 100191, China
 Tel: +86-10-62304633-2512 Fax: +86-10-62304633-2504
 E-mail: ctt@chinattl.com Http://www.chinattl.cn

DC Voltage Measurement

A/D - Converter Resolution nominal
 High Range: 1LSB = 6.1 μ V, full range = -100...+300 mV
 Low Range: 1LSB = 61nV, full range = -1.....+3mV
 DASY measurement parameters: Auto Zero Time: 3 sec; Measuring time: 3 sec

Calibration Factors	X	Y	Z
High Range	403.835 \pm 0.15% (k=2)	404.092 \pm 0.15% (k=2)	403.825 \pm 0.15% (k=2)
Low Range	3.95845 \pm 0.7% (k=2)	3.96789 \pm 0.7% (k=2)	3.97952 \pm 0.7% (k=2)

Connector Angle

Connector Angle to be used in DASY system	43° \pm 1°
---	--------------



中国认可
国际互认
校准
CALIBRATION
CNAS L0570

Add: No.52 HuaYuanBei Road, Haidian District, Beijing, 100191, China
Tel: +86-10-62304633-2512 Fax: +86-10-62304633-2504
E-mail: cttl@chinattl.com [Http://www.chinattl.cn](http://www.chinattl.cn)

Client **3in** Certificate No: **Z21-60208**

CALIBRATION CERTIFICATE

Object EX3DV4 - SN : 7401
Calibration Procedure(s) FF-Z11-004-02
Calibration Procedures for Dosimetric E-field Probes
Calibration date: June 07, 2021

This calibration Certificate documents the traceability to national standards, which realize the physical units of measurements(SI). The measurements and the uncertainties with confidence probability are given on the following pages and are part of the certificate.

All calibrations have been conducted in the closed laboratory facility: environment temperature(22±3)°C and humidity<70%.

Calibration Equipment used (M&TE critical for calibration)

Primary Standards	ID #	Cal Date(Calibrated by, Certificate No.)	Scheduled Calibration
Power Meter NRP2	101919	16-Jun-20(CTTL, No.J20X04344)	Jun-21
Power sensor NRP-Z91	101547	16-Jun-20(CTTL, No.J20X04344)	Jun-21
Power sensor NRP-Z91	101548	16-Jun-20(CTTL, No.J20X04344)	Jun-21
Reference 10dBAttenuator	18N50W-10dB	10-Feb-20(CTTL, No.J20X00525)	Feb-22
Reference 20dBAttenuator	18N50W-20dB	10-Feb-20(CTTL, No.J20X00526)	Feb-22
Reference Probe EX3DV4	SN 3617	27-Jan-21(SPEAG, No.EX3-3617_Jan21)	Jan-22
DAE4	SN 1556	15-Jan-21(SPEAG, No.DAE4-1556_Jan21)	Jan-22
Secondary Standards	ID #	Cal Date(Calibrated by, Certificate No.)	Scheduled Calibration
SignalGenerator MG3700A	6201052605	23-Jun-20(CTTL, No.J20X04343)	Jun-21
Network Analyzer E5071C	MY46110673	21-Jan-21(CTTL, No.J20X00515)	Jan-22

	Name	Function	Signature
Calibrated by:	Yu Zongying	SAR Test Engineer	
Reviewed by:	Lin Hao	SAR Test Engineer	
Approved by:	Qi Dianyuan	SAR Project Leader	

Issued: June 09, 2021

This calibration certificate shall not be reproduced except in full without written approval of the laboratory.



Add: No.52 HuaYuanBei Road, Haidian District, Beijing, 100191, China
Tel: +86-10-62304633-2512 Fax: +86-10-62304633-2504
E-mail: cttl@chinattl.com [Http://www.chinattl.cn](http://www.chinattl.cn)

Glossary:

TSL	tissue simulating liquid
NORM _{x,y,z}	sensitivity in free space
ConvF	sensitivity in TSL / NORM _{x,y,z}
DCP	diode compression point
CF	crest factor (1/duty_cycle) of the RF signal
A,B,C,D	modulation dependent linearization parameters
Polarization Φ	Φ rotation around probe axis
Polarization θ	θ rotation around an axis that is in the plane normal to probe axis (at measurement center), $\theta=0$ is normal to probe axis

Connector Angle information used in DASY system to align probe sensor X to the robot coordinate system

Calibration is Performed According to the Following Standards:

- IEEE Std 1528-2013, "IEEE Recommended Practice for Determining the Peak Spatial-Averaged Specific Absorption Rate (SAR) in the Human Head from Wireless Communications Devices: Measurement Techniques", June 2013
- IEC 62209-1, "Measurement procedure for the assessment of Specific Absorption Rate (SAR) from hand-held and body-mounted devices used next to the ear (frequency range of 300 MHz to 6 GHz)", July 2016
- IEC 62209-2, "Procedure to determine the Specific Absorption Rate (SAR) for wireless communication devices used in close proximity to the human body (frequency range of 30 MHz to 6 GHz)", March 2010
- KDB 865664, "SAR Measurement Requirements for 100 MHz to 6 GHz"

Methods Applied and Interpretation of Parameters:

- NORM_{x,y,z}**: Assessed for E-field polarization $\theta=0$ ($f \leq 900\text{MHz}$ in TEM-cell; $f > 1800\text{MHz}$: waveguide). NORM_{x,y,z} are only intermediate values, i.e., the uncertainties of NORM_{x,y,z} does not effect the E^2 -field uncertainty inside TSL (see below ConvF).
- NORM(f)_{x,y,z}** = NORM_{x,y,z} * frequency_response (see Frequency Response Chart). This linearization is implemented in DASY4 software versions later than 4.2. The uncertainty of the frequency response is included in the stated uncertainty of ConvF.
- DCP_{x,y,z}**: DCP are numerical linearization parameters assessed based on the data of power sweep (no uncertainty required). DCP does not depend on frequency nor media.
- PAR**: PAR is the Peak to Average Ratio that is not calibrated but determined based on the signal characteristics.
- A_{x,y,z}; B_{x,y,z}; C_{x,y,z}; VR_{x,y,z}; A,B,C** are numerical linearization parameters assessed based on the data of power sweep for specific modulation signal. The parameters do not depend on frequency nor media. VR is the maximum calibration range expressed in RMS voltage across the diode.
- ConvF and Boundary Effect Parameters**: Assessed in flat phantom using E-field (or Temperature Transfer Standard for $f \leq 800\text{MHz}$) and inside waveguide using analytical field distributions based on power measurements for $f > 800\text{MHz}$. The same setups are used for assessment of the parameters applied for boundary compensation (alpha, depth) of which typical uncertainty valued are given. These parameters are used in DASY4 software to improve probe accuracy close to the boundary. The sensitivity in TSL corresponds to NORM_{x,y,z} * ConvF whereby the uncertainty corresponds to that given for ConvF. A frequency dependent ConvF is used in DASY version 4.4 and higher which allows extending the validity from $\pm 50\text{MHz}$ to $\pm 100\text{MHz}$.
- Spherical isotropy (3D deviation from isotropy)**: in a field of low gradients realized using a flat phantom exposed by a patch antenna.
- Sensor Offset**: The sensor offset corresponds to the offset of virtual measurement center from the probe tip (on probe axis). No tolerance required.
- Connector Angle**: The angle is assessed using the information gained by determining the NORM_x (no uncertainty required).



Add: No.52 HuaYuanBei Road, Haidian District, Beijing, 100191, China
 Tel: +86-10-62304633-2512 Fax: +86-10-62304633-2504
 E-mail: cttl@chinattl.com [Http://www.chinattl.cn](http://www.chinattl.cn)

DASY/EASY – Parameters of Probe: EX3DV4 – SN:7401

Basic Calibration Parameters

	Sensor X	Sensor Y	Sensor Z	Unc (k=2)
Norm($\mu V/(V/m)^2$) ^A	0.38	0.45	0.34	$\pm 10.0\%$
DCP(mV) ^B	102.9	101.7	103.3	

Modulation Calibration Parameters

UID	Communication System Name		A dB	B dB $\cdot\mu V$	C	D dB	VR mV	Unc ^E (k=2)
0	CW	X	0.0	0.0	1.0	0.00	152.9	$\pm 2.3\%$
		Y	0.0	0.0	1.0		169.2	
		Z	0.0	0.0	1.0		141.7	

The reported uncertainty of measurement is stated as the standard uncertainty of Measurement multiplied by the coverage factor $k=2$, which for a normal distribution Corresponds to a coverage probability of approximately 95%.

^A The uncertainties of Norm X, Y, Z do not affect the E²-field uncertainty inside TSL (see Page 4).

^B Numerical linearization parameter: uncertainty not required.

^E Uncertainty is determined using the max. deviation from linear response applying rectangular distribution and is expressed for the square of the field value.



Add: No.52 HuaYuanBei Road, Haidian District, Beijing, 100191, China
 Tel: +86-10-62304633-2512 Fax: +86-10-62304633-2504
 E-mail: cttl@chinattl.com [Http://www.chinattl.cn](http://www.chinattl.cn)

DASY/EASY – Parameters of Probe: EX3DV4 – SN:7401

Calibration Parameter Determined in Head Tissue Simulating Media

f [MHz] ^c	Relative Permittivity ^F	Conductivity (S/m) ^F	ConvF X	ConvF Y	ConvF Z	Alpha ^G	Depth ^G (mm)	Unct. (k=2)
750	41.9	0.89	10.59	10.59	10.59	0.40	0.75	±12.1%
835	41.5	0.90	10.17	10.17	10.17	0.18	1.21	±12.1%
900	41.5	0.97	10.11	10.11	10.11	0.19	1.12	±12.1%
1750	40.1	1.37	8.62	8.62	8.62	0.24	1.01	±12.1%
1900	40.0	1.40	8.35	8.35	8.35	0.23	1.15	±12.1%
2000	40.0	1.40	8.40	8.40	8.40	0.20	1.25	±12.1%
2300	39.5	1.67	8.20	8.20	8.20	0.46	0.78	±12.1%
2450	39.2	1.80	7.90	7.90	7.90	0.61	0.69	±12.1%
2600	39.0	1.96	7.64	7.64	7.64	0.47	0.81	±12.1%
5250	35.9	4.71	5.64	5.64	5.64	0.45	1.35	±13.3%
5600	35.5	5.07	5.14	5.14	5.14	0.50	1.30	±13.3%
5750	35.4	5.22	5.19	5.19	5.19	0.50	1.30	±13.3%

^c Frequency validity above 300 MHz of ±100MHz only applies for DASY v4.4 and higher (Page 2), else it is restricted to ±50MHz. The uncertainty is the RSS of ConvF uncertainty at calibration frequency and the uncertainty for the indicated frequency band. Frequency validity below 300 MHz is ± 10, 25, 40, 50 and 70 MHz for ConvF assessments at 30, 64, 128, 150 and 220 MHz respectively. Above 5 GHz frequency validity can be extended to ± 110 MHz.

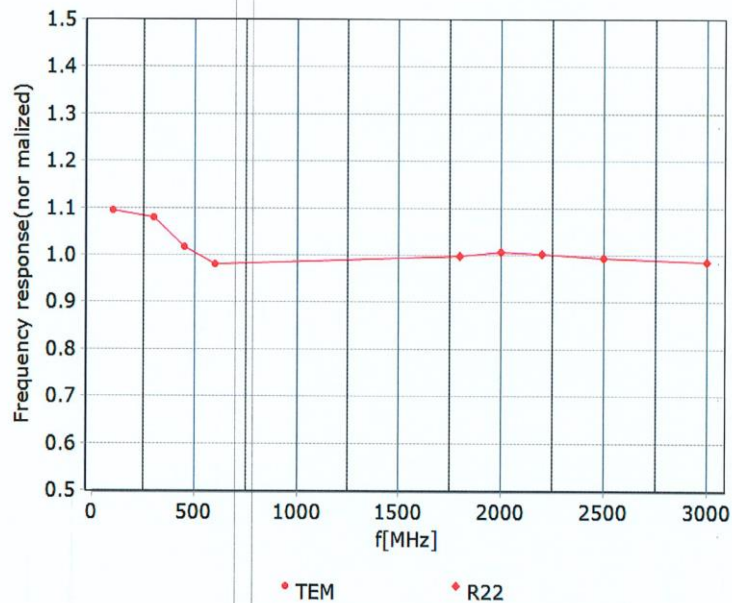
^F At frequency below 3 GHz, the validity of tissue parameters (ϵ and σ) can be relaxed to ±10% if liquid compensation formula is applied to measured SAR values. At frequencies above 3 GHz, the validity of tissue parameters (ϵ and σ) is restricted to ±5%. The uncertainty is the RSS of the ConvF uncertainty for indicated target tissue parameters.

^G Alpha/Depth are determined during calibration. SPEAG warrants that the remaining deviation due to the boundary effect after compensation is always less than ± 1% for frequencies below 3 GHz and below ± 2% for the frequencies between 3-6 GHz at any distance larger than half the probe tip diameter from the boundary.



Add: No.52 HuaYuanBei Road, Haidian District, Beijing, 100191, China
Tel: +86-10-62304633-2512 Fax: +86-10-62304633-2504
E-mail: cttl@chinattl.com [Http://www.chinattl.cn](http://www.chinattl.cn)

Frequency Response of E-Field (TEM-Cell: ifi110 EXX, Waveguide: R22)



Uncertainty of Frequency Response of E-field: $\pm 7.4\%$ ($k=2$)

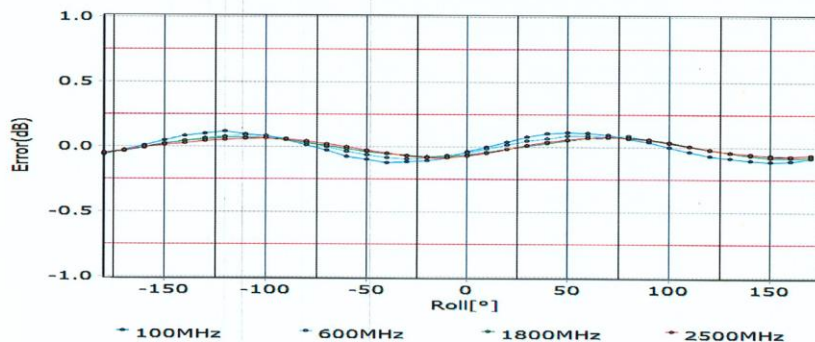
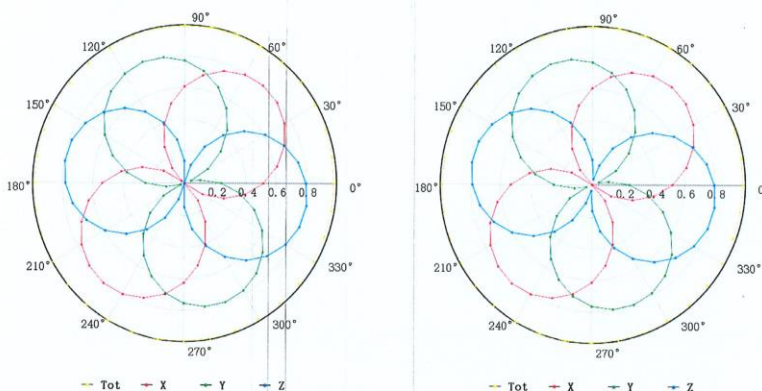


Add: No.52 HuaYuanBei Road, Haidian District, Beijing, 100191, China
 Tel: +86-10-62304633-2512 Fax: +86-10-62304633-2504
 E-mail: cttl@chinattl.com [Http://www.chinattl.cn](http://www.chinattl.cn)

Receiving Pattern (Φ), $\theta=0^\circ$

f=600 MHz, TEM

f=1800 MHz, R22

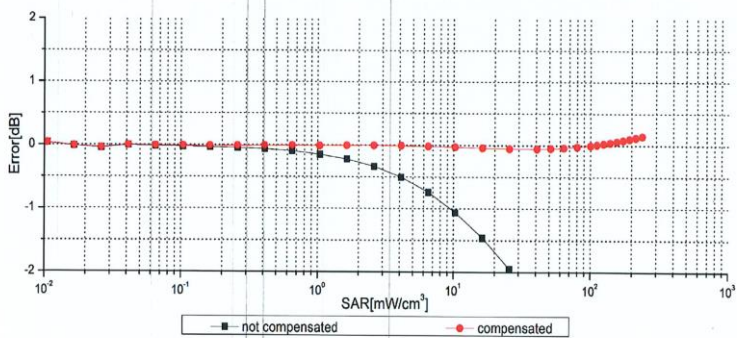
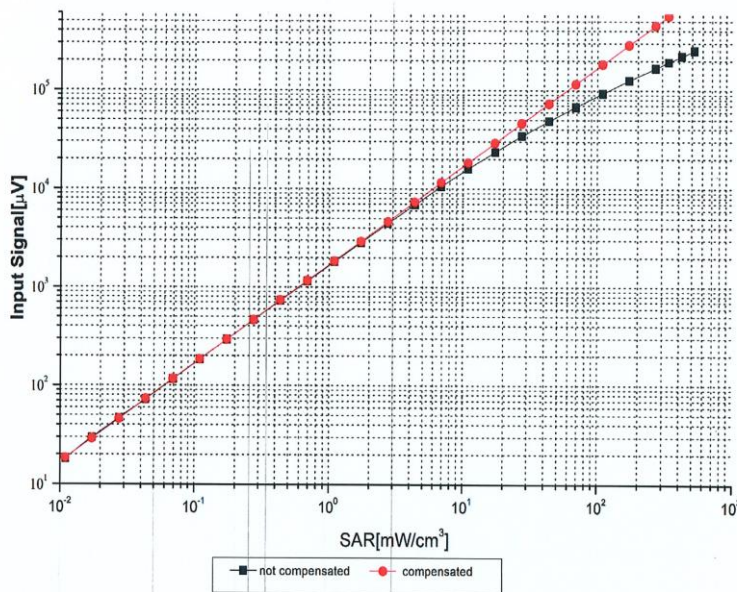


Uncertainty of Axial Isotropy Assessment: $\pm 1.2\%$ ($k=2$)



Add: No.52 HuaYuanBei Road, Haidian District, Beijing, 100191, China
 Tel: +86-10-62304633-2512 Fax: +86-10-62304633-2504
 E-mail: cttl@chinattl.com [Http://www.chinattl.cn](http://www.chinattl.cn)

Dynamic Range $f(SAR_{head})$ (TEM cell, $f = 900$ MHz)



Uncertainty of Linearity Assessment: $\pm 0.9\%$ ($k=2$)

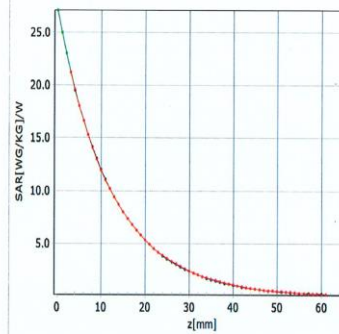
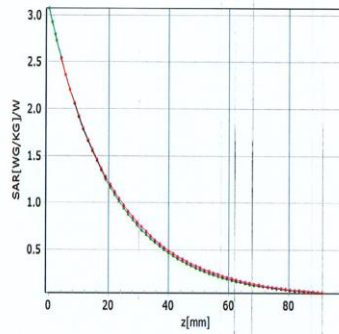


Add: No.52 HuaYuanBei Road, Haidian District, Beijing, 100191, China
 Tel: +86-10-62304633-2512 Fax: +86-10-62304633-2504
 E-mail: cttl@chinattl.com [Http://www.chinattl.cn](http://www.chinattl.cn)

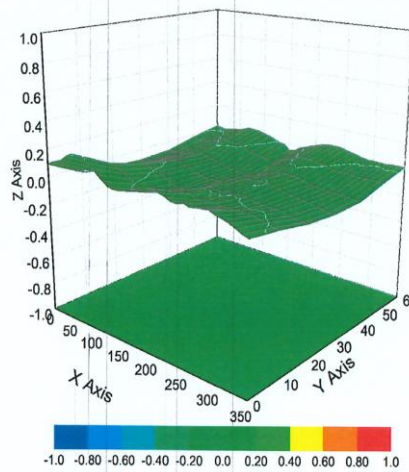
Conversion Factor Assessment

f=750 MHz,WGLS R9(H_convF)

f=1750 MHz,WGLS R22(H_convF)



Deviation from Isotropy in Liquid



Uncertainty of Spherical Isotropy Assessment: $\pm 3.2\%$ ($k=2$)



Add: No.52 HuaYuanBei Road, Haidian District, Beijing, 100191, China
Tel: +86-10-62304633-2512 Fax: +86-10-62304633-2504
E-mail: cttl@chinattl.com [Http://www.chinattl.cn](http://www.chinattl.cn)

DASY/EASY – Parameters of Probe: EX3DV4 – SN:7401

Other Probe Parameters

Sensor Arrangement	Triangular
Connector Angle (°)	153.1
Mechanical Surface Detection Mode	enabled
Optical Surface Detection Mode	disable
Probe Overall Length	337mm
Probe Body Diameter	10mm
Tip Length	9mm
Tip Diameter	2.5mm
Probe Tip to Sensor X Calibration Point	1mm
Probe Tip to Sensor Y Calibration Point	1mm
Probe Tip to Sensor Z Calibration Point	1mm
Recommended Measurement Distance from Surface	1.4mm



In Collaboration with
s p e a g
CALIBRATION LABORATORY



中国认可
国际互认
校准
CALIBRATION
CNAS L0570

Add: No.52 HuanYuanBei Road, Haidian District, Beijing, 100191, CI
Tel: +86-10-62304633-2079 Fax: +86-10-62304633-2504
E-mail: ctll@chinattl.com http://www.chinattl.cn

Client **CATR(Chongqing)**

Certificate No: **Z21-60146**

CALIBRATION CERTIFICATE

Object **D750V3 - SN: 1037**
Calibration Procedure(s) **FF-Z11-003-01
Calibration Procedures for dipole validation kits**
Calibration date: **April 17, 2021**

This calibration Certificate documents the traceability to national standards, which realize the physical units of measurements(SI). The measurements and the uncertainties with confidence probability are given on the following pages and are part of the certificate.

All calibrations have been conducted in the closed laboratory facility: environment temperature(22±3)°C and humidity<70%.

Calibration Equipment used (M&TE critical for calibration)

Primary Standards	ID #	Cal Date(Calibrated by, Certificate No.)	Scheduled Calibration
Power Meter NRP2	106276	12-May-20 (CTTL, No.J20X02965)	May-21
Power sensor NRP6A	101369	12-May-20 (CTTL, No.J20X02965)	May-21
Reference Probe EX3DV4	SN 7307	29-May-20(SPEAG,No.EX3-7307_May20)	May-21
DAE4	SN 777	08-Jan-21(CTTL-SPEAG,No.Z21-60003)	Jan-22
Secondary Standards	ID #	Cal Date(Calibrated by, Certificate No.)	Scheduled Calibration
Signal Generator E4438C	MY49071430	01-Feb-21 (CTTL, No.J21X00593)	Jan-22
NetworkAnalyzer E5071C	MY46103773	14-Jan-21 (CTTL, No.J21X00232)	Jan-22

	Name	Function	Signature
Calibrated by:	Zhao Jing	SAR Test Engineer	
Reviewed by:	Lin Hao	SAR Test Engineer	
Approved by:	Qi Dianyuan	SAR Project Leader	

Issued: April 21, 2021

This calibration certificate shall not be reproduced except in full without written approval of the laboratory.



Add: No.52 HunYuanBei Road, Haidian District, Beijing, 100191, China
Tel: +86-10-62304633-2079 Fax: +86-10-62304633-2504
E-mail: cttl@chinattl.com http://www.chinattl.cn

Glossary:

TSL	tissue simulating liquid
ConvF	sensitivity in TSL / NORM _{x,y,z}
N/A	not applicable or not measured

Calibration is Performed According to the Following Standards:

- IEEE Std 1528-2013, "IEEE Recommended Practice for Determining the Peak Spatial-Averaged Specific Absorption Rate (SAR) in the Human Head from Wireless Communications Devices: Measurement Techniques", June 2013
- IEC 62209-1, "Measurement procedure for assessment of specific absorption rate of human exposure to radio frequency fields from hand-held and body-mounted wireless communication devices- Part 1: Device used next to the ear (Frequency range of 300MHz to 6GHz)", July 2016
- IEC 62209-2, "Procedure to measure the Specific Absorption Rate (SAR) For wireless communication devices used in close proximity to the human body (frequency range of 30MHz to 6GHz)", March 2010
- KDB865664, SAR Measurement Requirements for 100 MHz to 6 GHz

Additional Documentation:

- DASY4/5 System Handbook

Methods Applied and Interpretation of Parameters:

- Measurement Conditions:** Further details are available from the Validation Report at the end of the certificate. All figures stated in the certificate are valid at the frequency indicated.
- Antenna Parameters with TSL:** The dipole is mounted with the spacer to position its feed point exactly below the center marking of the flat phantom section, with the arms oriented parallel to the body axis.
- Feed Point Impedance and Return Loss:** These parameters are measured with the dipole positioned under the liquid filled phantom. The impedance stated is transformed from the measurement at the SMA connector to the feed point. The Return Loss ensures low reflected power. No uncertainty required.
- Electrical Delay:** One-way delay between the SMA connector and the antenna feed point. No uncertainty required.
- SAR measured:** SAR measured at the stated antenna input power.
- SAR normalized:** SAR as measured, normalized to an input power of 1 W at the antenna connector.
- SAR for nominal TSL parameters:** The measured TSL parameters are used to calculate the nominal SAR result.

The reported uncertainty of measurement is stated as the standard uncertainty of Measurement multiplied by the coverage factor $k=2$, which for a normal distribution Corresponds to a coverage probability of approximately 95%.



Add: No.52 HuanYuanBei Road, Haidian District, Beijing, 100191, China
 Tel: +86-10-62304633-2079 Fax: +86-10-62304633-2504
 E-mail: cttf@chinattl.com http://www.chinattl.cn

Measurement Conditions

DASY system configuration, as far as not given on page 1.

DASY Version	DASY52	V52.10.4
Extrapolation	Advanced Extrapolation	
Phantom	Triple Flat Phantom 5.1C	
Distance Dipole Center - TSL	15 mm	with Spacer
Zoom Scan Resolution	dx, dy, dz = 5 mm	
Frequency	750 MHz ± 1 MHz	

Head TSL parameters

The following parameters and calculations were applied.

	Temperature	Permittivity	Conductivity
Nominal Head TSL parameters	22.0 °C	42.0	0.90 mho/m
Measured Head TSL parameters	(22.0 ± 0.2) °C	42.0 ± 6 %	0.90 mho/m ± 6 %
Head TSL temperature change during test	<1.0 °C	----	----

SAR result with Head TSL

SAR averaged over 1 cm³ (1 g) of Head TSL	Condition	
SAR measured	250 mW input power	2.07 W/kg
SAR for nominal Head TSL parameters	normalized to 1W	8.24 W/kg ± 18.8 % (k=2)
SAR averaged over 10 cm³ (10 g) of Head TSL	Condition	
SAR measured	250 mW input power	1.37 W/kg
SAR for nominal Head TSL parameters	normalized to 1W	5.46 W/kg ± 18.7 % (k=2)



Add: No.52 HuanYuanBei Road, Haidian District, Beijing, 100191, China
Tel: +86-10-62304633-2079 Fax: +86-10-62304633-2504
E-mail: ettl@chinattl.com http://www.chinattl.cn

Appendix (Additional assessments outside the scope of CNAS L0570)

Antenna Parameters with Head TSL

Impedance, transformed to feed point	55.2Ω+ 1.58jΩ
Return Loss	- 25.8dB

General Antenna Parameters and Design

Electrical Delay (one direction)	0.941 ns
----------------------------------	----------

After long term use with 100W radiated power, only a slight warming of the dipole near the feedpoint can be measured.

The dipole is made of standard semirigid coaxial cable. The center conductor of the feeding line is directly connected to the second arm of the dipole. The antenna is therefore short-circuited for DC-signals. On some of the dipoles, small end caps are added to the dipole arms in order to improve matching when loaded according to the position as explained in the "Measurement Conditions" paragraph. The SAR data are not affected by this change. The overall dipole length is still according to the Standard. No excessive force must be applied to the dipole arms, because they might bend or the soldered connections near the feedpoint may be damaged.

Additional EUT Data

Manufactured by	SPEAG
-----------------	-------