



SAR TEST REPORT

No. I22Z60016-SEM01

For

TCL Communication Ltd.

GSM/UMTS/LTE Mobile phone

Model Name: 4188S

with

Hardware Version: 04

Software Version: RDS5

FCC ID: 2ACCJH162

Issued Date: 2022-3-9

Note:

The test results in this test report relate only to the devices specified in this report. This report shall not be reproduced except in full without the written approval of CTTL.

The report must not be used by the client to claim product certification, approval, or endorsement by NVLAP, NIST, or any agency of the U.S. Government.

Test Laboratory:

CTTL, Telecommunication Technology Labs, CAICT

No. 52, Huayuan North Road, Haidian District, Beijing, P. R. China 100191.

Tel:+86(0)10-62304633-2512,Fax:+86(0)10-62304633-2504

Email: ctl_terminals@caict.ac.cn, website: www.caict.ac.cn

**REPORT HISTORY**

Report Number	Revision	Issue Date	Description
I22Z60016-SEM01	Rev.0	2022-3-2	Initial creation of test report
I22Z60016-SEM01	Rev.1	2022-3-9	<ol style="list-style-type: none">1. Revise SAR results for GSM850 in Table 14.1-2 on page66.2. Add the size of display diagonal dimension and overall diagonal dimension in section14.4 on page81.

TABLE OF CONTENT

1 TEST LABORATORY	5
1.1 TESTING LOCATION	5
1.2 TESTING ENVIRONMENT.....	5
1.3 PROJECT DATA	5
1.4 SIGNATURE.....	5
2 STATEMENT OF COMPLIANCE	6
3 CLIENT INFORMATION	8
3.1 APPLICANT INFORMATION	8
3.2 MANUFACTURER INFORMATION	8
4 EQUIPMENT UNDER TEST (EUT) AND ANCILLARY EQUIPMENT (AE)	9
4.1 ABOUT EUT.....	9
4.2 INTERNAL IDENTIFICATION OF EUT USED DURING THE TEST	10
4.3 INTERNAL IDENTIFICATION OF AE USED DURING THE TEST	10
5 TEST METHODOLOGY	11
5.1 APPLICABLE LIMIT REGULATIONS.....	11
5.2 APPLICABLE MEASUREMENT STANDARDS	11
6 SPECIFIC ABSORPTION RATE (SAR).....	12
6.1 INTRODUCTION.....	12
6.2 SAR DEFINITION.....	12
7 TISSUE SIMULATING LIQUIDS	13
7.1 TARGETS FOR TISSUE SIMULATING LIQUID.....	13
7.2 DIELECTRIC PERFORMANCE	13
8 SYSTEM VERIFICATION	16
8.1 SYSTEM SETUP.....	16
8.2 SYSTEM VERIFICATION.....	17
9 MEASUREMENT PROCEDURES	18
9.1 TESTS TO BE PERFORMED	18
9.2 GENERAL MEASUREMENT PROCEDURE.....	20
9.3 WCDMA MEASUREMENT PROCEDURES FOR SAR	21
9.4 SAR MEASUREMENT FOR LTE.....	22
9.5 BLUETOOTH & WI-FI MEASUREMENT PROCEDURES FOR SAR	24
9.6 POWER DRIFT.....	24
10 AREA SCAN BASED 1-G SAR.....	25
10.1 REQUIREMENT OF KDB.....	25
10.2 FAST SAR ALGORITHMS	25

11 CONDUCTED OUTPUT POWER.....	26
11.1 GSM MEASUREMENT RESULT	26
11.2 WCDMA MEASUREMENT RESULT	28
11.3 LTE MEASUREMENT RESULT	32
11.4 WI-FI AND BT MEASUREMENT RESULT	60
12 SIMULTANEOUS TX SAR CONSIDERATIONS.....	62
12.1 INTRODUCTION.....	62
12.2 TRANSMIT ANTENNA SEPARATION DISTANCES.....	62
12.3 SAR MEASUREMENT POSITIONS.....	63
12.4 STANDALONE SAR TEST EXCLUSION CONSIDERATIONS	63
13 EVALUATION OF SIMULTANEOUS.....	64
14 SAR TEST RESULT	65
14.1 SAR RESULTS FOR 2G/3G/4G	66
14.2 WLAN EVALUATION FOR 2.4G	78
14.3 SAR RESULTS FOR BT	80
14.4 SAR RESULTS FOR 10-G EXTREMITY SAR.....	81
15 SAR MEASUREMENT VARIABILITY.....	83
16 MEASUREMENT UNCERTAINTY	84
16.1 MEASUREMENT UNCERTAINTY FOR NORMAL SAR TESTS (300MHZ~3GHZ).....	84
16.2 MEASUREMENT UNCERTAINTY FOR FAST SAR TESTS (300MHZ~3GHZ).....	85
17 MAIN TEST INSTRUMENTS.....	86
ANNEX A GRAPH RESULTS.....	87
ANNEX B SYSTEM VERIFICATION RESULTS	127
ANNEX C SAR MEASUREMENT SETUP	134
ANNEX D POSITION OF THE WIRELESS DEVICE IN RELATION TO THE PHANTOM	140
ANNEX E EQUIVALENT MEDIA RECIPES.....	143
ANNEX F SYSTEM VALIDATION	144
ANNEX G PROBE CALIBRATION CERTIFICATE.....	145
ANNEX H DIPOLE CALIBRATION CERTIFICATE	154
ANNEX I ACCREDITATION CERTIFICATE.....	190

1 Test Laboratory

1.1 Testing Location

Company Name:	CTTL(Shouxiang)
Address:	No. 51 Shouxiang Science Building, Xueyuan Road, Haidian District, Beijing, P. R. China100191

1.2 Testing Environment

Temperature:	18°C~25°C,
Relative humidity:	30%~ 70%
Ground system resistance:	< 0.5 Ω
Ambient noise & Reflection:	< 0.012 W/kg

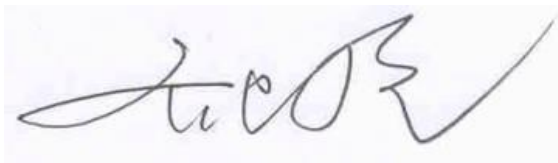
1.3 Project Data

Project Leader:	Qi Dianyuan
Test Engineer:	Yao Juming
Testing Start Date:	February 21, 2022
Testing End Date:	February 26, 2022

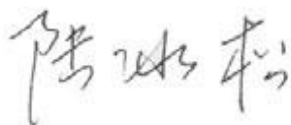
1.4 Signature



Yao Juming
(Prepared this test report)



Qi Dianyuan
(Reviewed this test report)



Lu Bingsong
Deputy Director of the laboratory
(Approved this test report)

2 Statement of Compliance

The maximum results of Specific Absorption Rate (SAR) found during testing for TCL Communication Ltd. GSM/UMTS/LTE mobile phone 4188S are as follows:

Table 2.1: Highest Reported SAR (1g)

Technology Band	Head	Hotspot	Body-Worn	Phablet(10g)	Equipment Class
GSM850	0.22	0.29	0.29	/	PCE
GSM1900	0.23	0.96	0.61	/	
WCDMA1900	0.44	1.06	0.38	2.85	
WCDMA 1700	0.27	1.04	0.39	2.76	
WCDMA 850	0.60	0.60	0.60	/	
LTE Band2	0.39	0.97	0.45	2.79	
LTE Band5	0.74	0.62	0.62	/	
LTE Band7	0.36	1.17	0.49	/	
LTE Band12	0.68	0.52	0.52	/	
LTE Band13	0.79	0.52	0.52	/	
LTE Band66	0.26	1.19	0.47	2.88	
WLAN 2.4GHz	0.67	0.24	0.24	0.35	DTS

The SAR values found for the Mobile Phone are below the maximum recommended levels of 1.6 W/kg as averaged over any 1g tissue according to the ANSI C95.1-1992.

For body operation, this device has been tested and meets FCC RF exposure guidelines when used with any accessory that contains no metal and which provides a minimum separation distance of 10/15 mm between this device and the body of the user. Use of other accessories may not ensure compliance with FCC RF exposure guidelines.

The EUT battery must be fully charged and checked periodically during the test to ascertain uniform power output.

The measurement together with the test system set-up is described in annex C of this test report. A detailed description of the equipment under test can be found in chapter 4 of this test report. The highest reported SAR value is obtained at the case of **(Table 2.1)**, and the values are:

Head: 0.79 W/kg (1g)

Body: 1.19 W/kg (1g)

Remark:

This device supports both LTE B4 and B66. Since the supported frequency span for LTE B4 falls completely within the supports frequency span for LTE B66, both LTE bands have the same target power, and both LTE bands share the same transmission path; therefore, SAR was only assessed for LTE B66.

Table 2.2: The sum of SAR values for Main antenna + WiFi-2.4G (1g)

	Position	Main antenna	WiFi-2.4G	Sum
Highest SAR value for Head	Left head, Cheek (LTE B13)	0.79	0.07	0.86
Highest SAR value for Body	Rear 10mm (LTE B7)	1.17	0.11	1.28

Table 2.3: The sum of SAR values for main antenna and BT (1g)

	Position	Main antenna	BT	Sum
Maximum reported SAR value for Head	Left head, Cheek (LTE B13)	0.79	<0.01	0.79
Maximum reported SAR value for Body	Bottom 10mm (LTE B66)	1.19	<0.01	1.19

Conclusion:

According to the above tables, the sum of reported SAR values is <math><1.6\text{W/kg}</math>. So the simultaneous transmission SAR with volume scans is not required.

According to the above tables, the highest sum of reported SAR values is **1.28 W/kg (1g)**. The detail for simultaneous transmission consideration is described in chapter 13.

3 Client Information

3.1 Applicant Information

Company Name:	TCL Communication Ltd.
Address/Post:	5/F, Building 22E, 22 Science Park East Avenue, Hong Kong Science Park, Shatin, NT, Hong Kong
Contact Person:	Peter yang
Contact Email:	peter.yang@tcl.com
Telephone:	+86 755 3664 5759
Fax:	+86 755 3661 2000-81722

3.2 Manufacturer Information

Company Name:	TCL Communication Ltd.
Address/Post:	5/F, Building 22E, 22 Science Park East Avenue, Hong Kong Science Park, Shatin, NT, Hong Kong
Contact Person:	Peter yang
Contact Email:	peter.yang@tcl.com
Telephone:	+86 755 3664 5759
Fax:	+86 755 3661 2000-81722

4 Equipment Under Test (EUT) and Ancillary Equipment (AE)

4.1 About EUT

Description:	GSM/UMTS/LTE mobile phone
Model name:	4188S
Operating mode(s):	GSM850/900/1800/1900, WCDMA850/900/1700/1900/2100 LTE Band 2/3/4/5/7/12/13/66 BT, Wi-Fi2.4G
Tested Tx Frequency:	824 – 849 MHz (GSM 850)
	1850 – 1910 MHz (GSM 1900)
	824 – 849 MHz (WCDMA 850 Band V)
	1850 – 1910 MHz (WCDMA1900 Band IV)
	1850 – 1910 MHz (WCDMA1900 Band II)
	1850.7 – 1909.3 MHz (LTE Band 2)
	824.7 – 848.3 MHz (LTE Band 5)
	2502.5–2567.5 MHz (LTE Band 7)
	699.7 – 715.3 MHz (LTE Band 12)
	779.5 –784.5 MHz (LTE Band 13)
	1710.7 –1779.3 MHz (LTE Band 66)
2412 – 2462 MHz (Wi-Fi 2.4G)	
2400 – 2483.5 MHz (Bluetooth)	
GPRS/EGPRS Multislot Class:	12
Test device Production information:	Production unit
Device type:	Portable device
Antenna type:	Integrated antenna
Hotspot mode:	Support

4.2 Internal Identification of EUT used during the test

EUT ID*	IMEI	HW Version	SW Version
EUT1	356806500015771	04	RDS5
EUT2	356806500015482	04	RDS5
EUT3	356806500015425	04	RDS5
EUT4	356806500014683	04	RDS5
EUT5	356806500014840	04	RDS5

*EUT ID: is used to identify the test sample in the lab internally.

Note: It is performed to test SAR with the EUT1-3 and conducted power with the EUT4-5.

4.3 Internal Identification of AE used during the test

AE ID*	Description	Model	SN	Manufacturer
AE1	Battery	CAB2880029C7	/	VEKEN

*AE ID: is used to identify the test sample in the lab internally.

5 TEST METHODOLOGY

5.1 Applicable Limit Regulations

ANSI C95.1–1992: IEEE Standard for Safety Levels with Respect to Human Exposure to Radio Frequency Electromagnetic Fields, 3 kHz to 300 GHz.

It specifies the maximum exposure limit of **1.6 W/kg** as averaged over any 1 gram of tissue for portable devices being used within 20 cm of the user in the uncontrolled environment.

5.2 Applicable Measurement Standards

IEEE 1528–2013: Recommended Practice for Determining the Peak Spatial-Average Specific Absorption Rate (SAR) in the Human Head from Wireless Communications Devices: Measurement Techniques.

KDB447498 D01: General RF Exposure Guidance v06: Mobile and Portable Devices RF Exposure Procedures and Equipment Authorization Policies.

KDB648474 D04 Handset SAR v01r03: SAR Evaluation Considerations for Wireless Handsets.

KDB941225 D01 SAR test for 3G devices v03r01: SAR Measurement Procedures for 3G Devices

KDB941225 D05 SAR for LTE Devices v02r05: SAR Evaluation Considerations for LTE Devices

KDB941225 D06 Hotspot Mode SAR v02r01: SAR Evaluation Procedures for Portable Devices with Wireless Router Capabilities

KDB248227 D01 802.11 Wi-Fi SAR v02r02: SAR GUIDANCE FOR IEEE 802.11 (Wi-Fi) TRANSMITTERS

KDB865664 D01 SAR measurement 100 MHz to 6 GHz v01r04: SAR Measurement Requirements for 100 MHz to 6 GHz.

KDB865664 D02 RF Exposure Reporting v01r02: RF Exposure Compliance Reporting and Documentation Considerations

6 Specific Absorption Rate (SAR)

6.1 Introduction

SAR is related to the rate at which energy is absorbed per unit mass in an object exposed to a radio field. The SAR distribution in a biological body is complicated and is usually carried out by experimental techniques or numerical modeling. The standard recommends limits for two tiers of groups, occupational/controlled and general population/uncontrolled, based on a person's awareness and ability to exercise control over his or her exposure. In general, occupational/controlled exposure limits are higher than the limits for general population/uncontrolled.

6.2 SAR Definition

The SAR definition is the time derivative (rate) of the incremental energy (dW) absorbed by (dissipated in) an incremental mass (dm) contained in a volume element (dv) of a given density (ρ). The equation description is as below:

$$SAR = \frac{d}{dt} \left(\frac{dW}{dm} \right) = \frac{d}{dt} \left(\frac{dW}{\rho dv} \right)$$

SAR is expressed in units of Watts per kilogram (W/kg)

SAR measurement can be either related to the temperature elevation in tissue by

$$SAR = c \left(\frac{\delta T}{\delta t} \right)$$

Where: C is the specific heat capacity, δT is the temperature rise and δt is the exposure duration, or related to the electrical field in the tissue by

$$SAR = \frac{\sigma |E|^2}{\rho}$$

Where: σ is the conductivity of the tissue, ρ is the mass density of tissue and E is the RMS electrical field strength.

However for evaluating SAR of low power transmitter, electrical field measurement is typically applied.

7 Tissue Simulating Liquids

7.1 Targets for tissue simulating liquid

Table 7.1: Targets for tissue simulating liquid

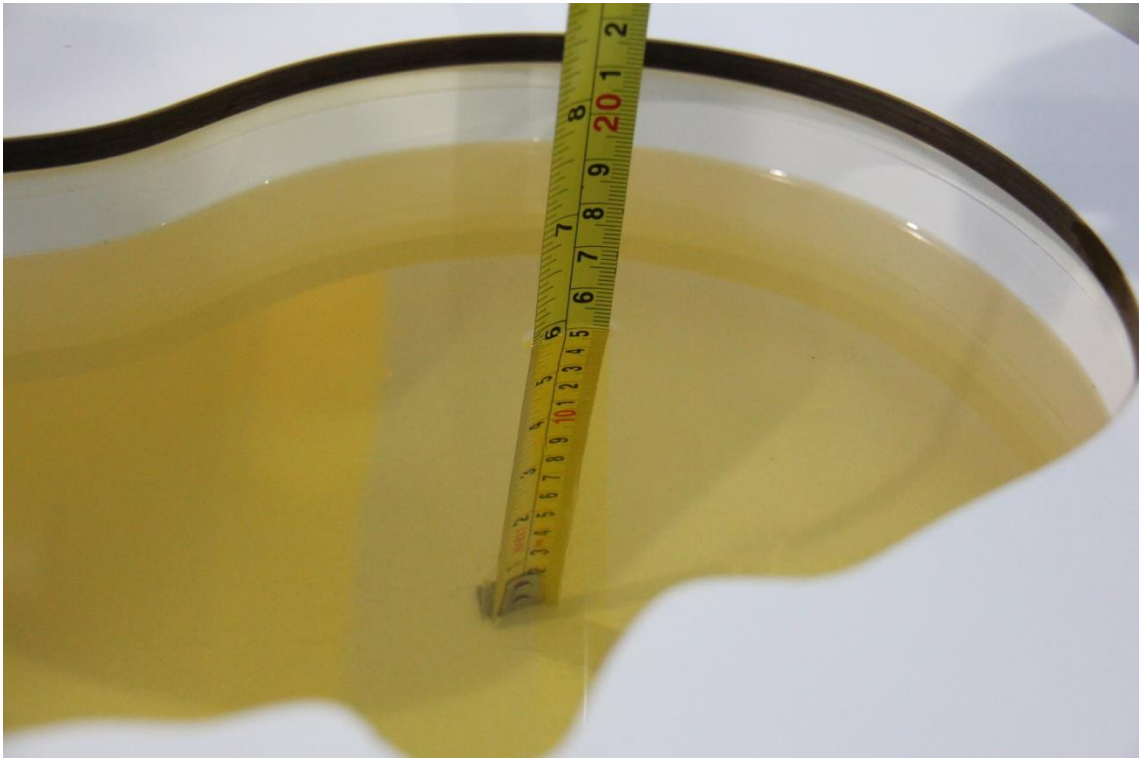
Frequency(MHz)	Liquid Type	Conductivity(σ)	$\pm 5\%$ Range	Permittivity(ϵ)	$\pm 5\%$ Range
750	Head	0.89	0.85~0.93	41.94	39.8~44.0
835	Head	0.90	0.86~0.95	41.5	39.4~43.6
1800	Head	1.40	1.33~1.47	40.0	38.0~42.0
1900	Head	1.40	1.33~1.47	40.0	38.0~42.0
2450	Head	1.67	1.59~1.75	39.47	37.5~41.4
2600	Head	1.96	1.86~2.06	39.01	37.1~41.0

7.2 Dielectric Performance

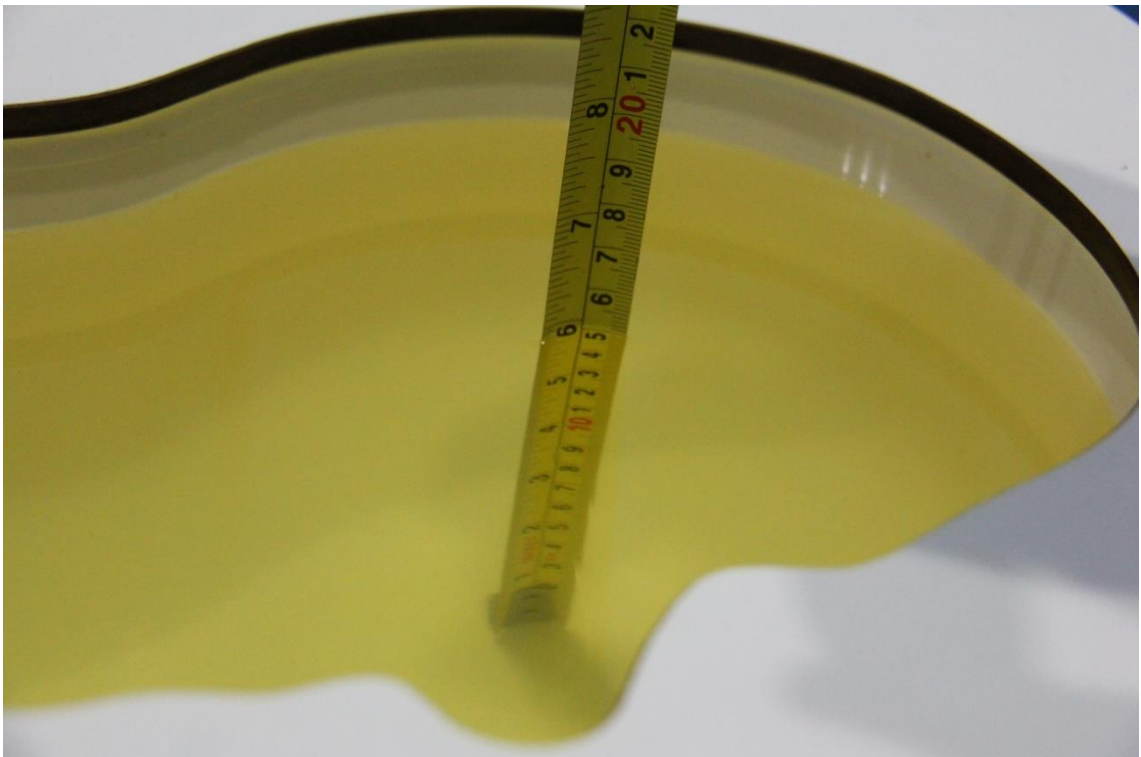
Table 7.2: Dielectric Performance of Tissue Simulating Liquid

Measurement Date (yyyy-mm-dd)	Type	Frequency	Permittivity ϵ	Drift (%)	Conductivity σ (S/m)	Drift (%)
2022-2-21	Head	750 MHz	45	7.30%	0.8217	-7.67%
2022-2-22	Head	835 MHz	44.69	7.69%	0.8571	-4.77%
2022-2-23	Head	1800 MHz	42.31	5.78%	1.408	0.57%
2022-2-24	Head	1900 MHz	42.08	5.20%	1.481	5.79%
2022-2-25	Head	2450 MHz	40.86	4.23%	1.934	7.44%
2022-2-26	Head	2600 MHz	40.51	3.85%	2.071	5.66%

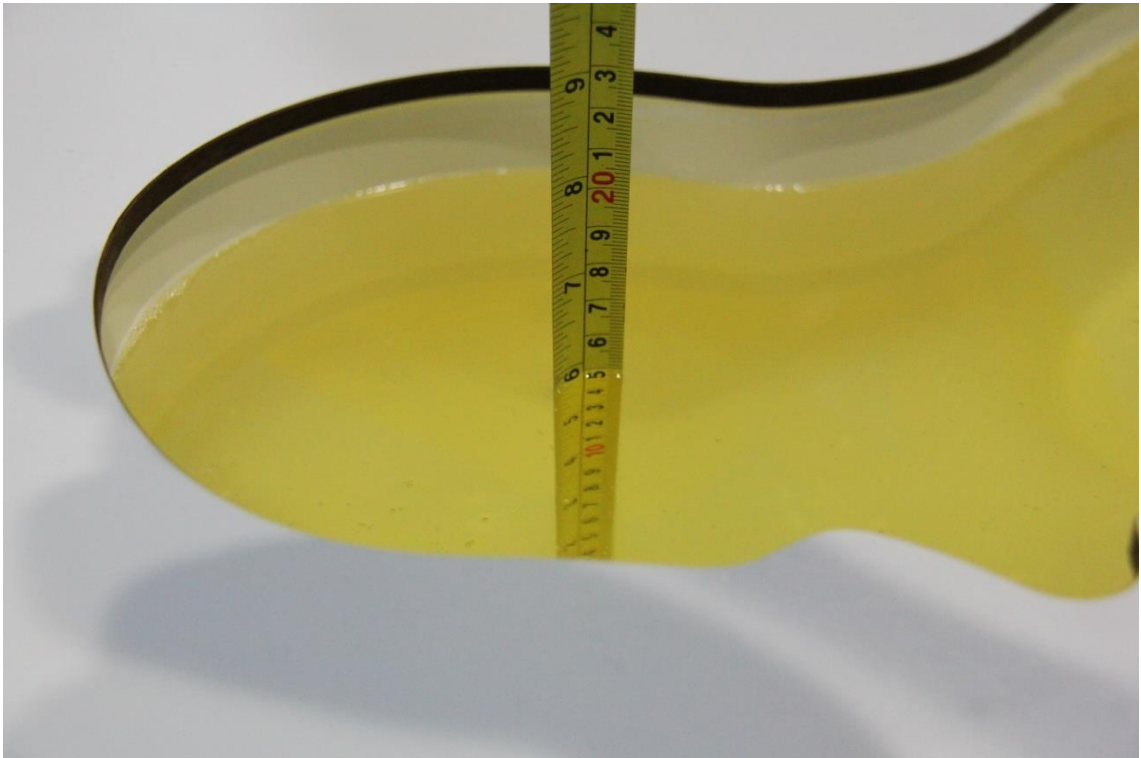
Note: The liquid temperature is 22.0°C



Picture 7-1 Liquid depth in the Head Phantom (835 MHz)



Picture 7-2 Liquid depth in the Head Phantom (1900 MHz)



Picture 7-3 Liquid depth in the Head Phantom (2450MHz)

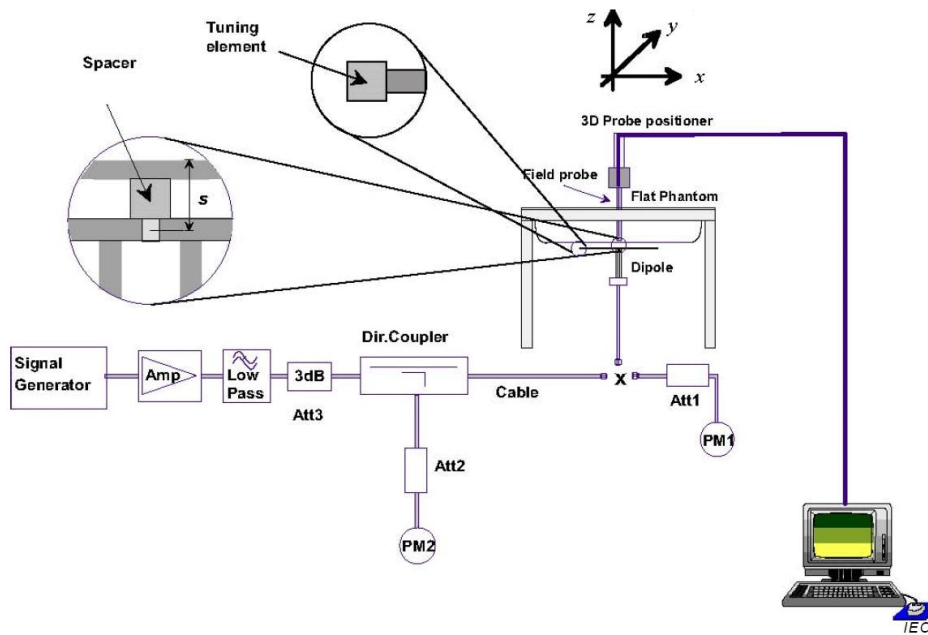


Picture 7-4 Liquid depth in the Head Phantom (2600 MHz)

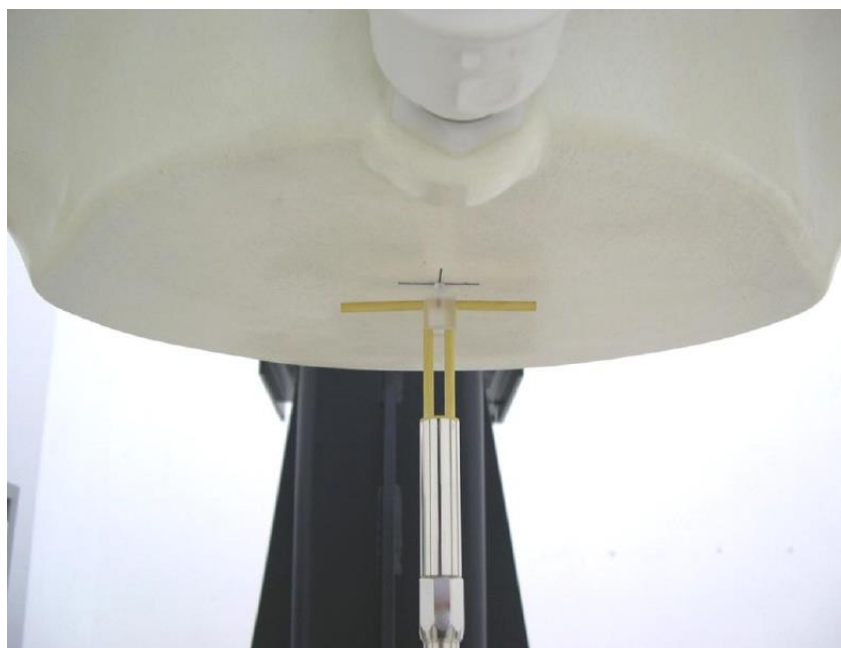
8 System verification

8.1 System Setup

In the simplified setup for system evaluation, the DUT is replaced by a calibrated dipole and the power source is replaced by a continuous wave that comes from a signal generator. The calibrated dipole must be placed beneath the flat phantom section of the SAM twin phantom with the correct distance holder. The distance holder should touch the phantom surface with a light pressure at the reference marking and be oriented parallel to the long side of the phantom. The equipment setup is shown below:



Picture 8.1 System Setup for System Evaluation



Picture 8.2 Photo of Dipole Setup

8.2 System Verification

SAR system verification is required to confirm measurement accuracy, according to the tissue dielectric media, probe calibration points and other system operating parameters required for measuring the SAR of a test device. The system verification must be performed for each frequency band and within the valid range of each probe calibration point required for testing the device.

The system verification results are required that the area scan estimated 1-g SAR is within 3% of the zoom scan 1-g SAR. The details are presented in annex B.

Table 8.1: System Verification of Head

Measurement Date (yyyy-mm-dd)	Frequency	Target value (W/kg)		Measured value(W/kg)		Deviation	
		10 g Average	1 g Average	10 g Average	1 g Average	10 g Average	1 g Average
2022-2-21	750 MHz	1.43	2.20	1.40	2.15	-2.10%	-2.27%
2022-2-22	835 MHz	1.60	2.48	1.55	2.39	-3.13%	-3.63%
2022-2-23	1800 MHz	4.95	9.51	5.07	9.66	2.42%	1.58%
2022-2-24	1900 MHz	5.22	10.00	5.18	9.93	-0.77%	-0.70%
2022-2-25	2450 MHz	6.33	13.70	6.27	13.55	-0.95%	-1.09%
2022-2-26	2600 MHz	6.48	14.70	6.43	14.62	-0.77%	-0.54%

9 Measurement Procedures

9.1 Tests to be performed

In order to determine the highest value of the peak spatial-average SAR of a handset, all device positions, configurations and operational modes shall be tested for each frequency band according to steps 1 to 3 below. A flowchart of the test process is shown in picture 9.1.

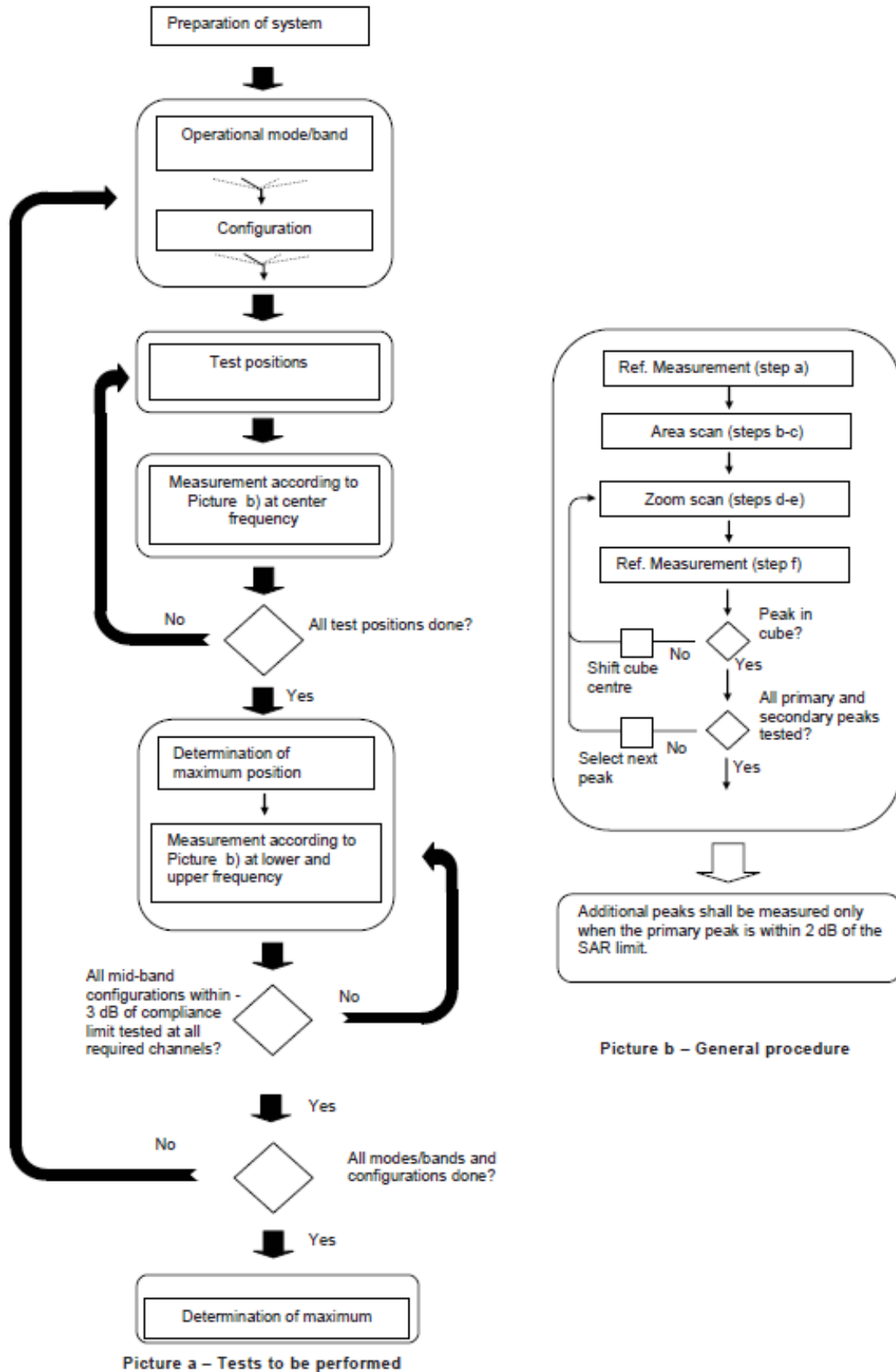
Step 1: The tests described in 9.2 shall be performed at the channel that is closest to the centre of the transmit frequency band (f_c) for:

- a) all device positions (cheek and tilt, for both left and right sides of the SAM phantom, as described in annex D),
- b) all configurations for each device position in a), e.g., antenna extended and retracted, and
- c) all operational modes, e.g., analogue and digital, for each device position in a) and configuration in b) in each frequency band.

If more than three frequencies need to be tested according to 11.1 (i.e., $N_c > 3$), then all frequencies, configurations and modes shall be tested for all of the above test conditions.

Step 2: For the condition providing highest peak spatial-average SAR determined in Step 1, perform all tests described in 9.2 at all other test frequencies, i.e., lowest and highest frequencies. In addition, for all other conditions (device position, configuration and operational mode) where the peak spatial-average SAR value determined in Step 1 is within 3 dB of the applicable SAR limit, it is recommended that all other test frequencies shall be tested as well.

Step 3: Examine all data to determine the highest value of the peak spatial-average SAR found in Steps 1 to 2.



Picture 9.1 Block diagram of the tests to be performed

9.2 General Measurement Procedure

The area and zoom scan resolutions specified in the table below must be applied to the SAR measurements and fully documented in SAR reports to qualify for TCB approval. Probe boundary effect error compensation is required for measurements with the probe tip closer than half a probe tip diameter to the phantom surface. Both the probe tip diameter and sensor offset distance must satisfy measurement protocols; to ensure probe boundary effect errors are minimized and the higher fields closest to the phantom surface can be correctly measured and extrapolated to the phantom surface for computing 1-g SAR. Tolerances of the post-processing algorithms must be verified by the test laboratory for the scan resolutions used in the SAR measurements, according to the reference distribution functions specified in IEEE Std 1528-2013. The results should be documented as part of the system validation records and may be requested to support test results when all the measurement parameters in the following table are not satisfied.

		≤ 3 GHz	> 3 GHz	
Maximum distance from closest measurement point (geometric center of probe sensors) to phantom surface		5 ± 1 mm	$\frac{1}{2} \cdot \delta \cdot \ln(2) \pm 0.5$ mm	
Maximum probe angle from probe axis to phantom surface normal at the measurement location		$30^\circ \pm 1^\circ$	$20^\circ \pm 1^\circ$	
Maximum area scan spatial resolution: $\Delta x_{Area}, \Delta y_{Area}$		≤ 2 GHz: ≤ 15 mm 2 – 3 GHz: ≤ 12 mm	3 – 4 GHz: ≤ 12 mm 4 – 6 GHz: ≤ 10 mm	
		When the x or y dimension of the test device, in the measurement plane orientation, is smaller than the above, the measurement resolution must be \leq the corresponding x or y dimension of the test device with at least one measurement point on the test device.		
Maximum zoom scan spatial resolution: $\Delta x_{Zoom}, \Delta y_{Zoom}$		≤ 2 GHz: ≤ 8 mm 2 – 3 GHz: ≤ 5 mm*	3 – 4 GHz: ≤ 5 mm* 4 – 6 GHz: ≤ 4 mm*	
Maximum zoom scan spatial resolution, normal to phantom surface	uniform grid: $\Delta z_{Zoom}(n)$	≤ 5 mm	3 – 4 GHz: ≤ 4 mm 4 – 5 GHz: ≤ 3 mm 5 – 6 GHz: ≤ 2 mm	
	graded grid	$\Delta z_{Zoom}(1)$: between 1 st two points closest to phantom surface	≤ 4 mm	3 – 4 GHz: ≤ 3 mm 4 – 5 GHz: ≤ 2.5 mm 5 – 6 GHz: ≤ 2 mm
		$\Delta z_{Zoom}(n>1)$: between subsequent points	$\leq 1.5 \cdot \Delta z_{Zoom}(n-1)$	
Minimum zoom scan volume	x, y, z	≥ 30 mm	3 – 4 GHz: ≥ 28 mm 4 – 5 GHz: ≥ 25 mm 5 – 6 GHz: ≥ 22 mm	
Note: δ is the penetration depth of a plane-wave at normal incidence to the tissue medium; see draft standard IEEE P1528-2011 for details. * When zoom scan is required and the <i>reported</i> SAR from the area scan based 1-g SAR estimation procedures of KDB 447498 is ≤ 1.4 W/kg, ≤ 8 mm, ≤ 7 mm and ≤ 5 mm zoom scan resolution may be applied, respectively, for 2 GHz to 3 GHz, 3 GHz to 4 GHz and 4 GHz to 6 GHz.				

9.3 WCDMA Measurement Procedures for SAR

The following procedures are applicable to WCDMA handsets operating under 3GPP Release99, Release 5 and Release 6. The default test configuration is to measure SAR with an established radio link between the DUT and a communication test set using a 12.2kbps RMC (reference measurement channel) configured in Test Loop Mode 1. SAR is selectively confirmed for other physical channel configurations (DPCCH & DPDCH_n), HSDPA and HSPA (HSUPA/HSDPA) modes according to output power, exposure conditions and device operating capabilities. Both uplink and downlink should be configured with the same RMC or AMR, when required. SAR for Release 5 HSDPA and Release 6 HSPA are measured using the applicable FRC (fixed reference channel) and E-DCH reference channel configurations. Maximum output power is verified according to applicable versions of 3GPP TS 34.121 and SAR must be measured according to these maximum output conditions. When Maximum Power Reduction (MPR) is not implemented according to Cubic Metric (CM) requirements for Release 6 HSPA, the following procedures do not apply.

For Release 5 HSDPA Data Devices:

Sub-test	β_c	β_d	β_d (SF)	β_c / β_d	β_{hs}	CM/dB
1	2/15	15/15	64	2/15	4/15	0.0
2	12/15	15/15	64	12/15	24/25	1.0
3	15/15	8/15	64	15/8	30/15	1.5
4	15/15	4/15	64	15/4	30/15	1.5

For Release 6 HSPA Data Devices

Sub-test	β_c	β_d	β_d (SF)	β_c / β_d	β_{hs}	β_{ec}	β_{ed}	β_{ed} (SF)	β_{ed} (codes)	CM (dB)	MPR (dB)	AG Index	E-TFCI
1	11/15	15/15	64	11/15	22/15	209/225	1039/225	4	1	1.5	1.5	20	75
2	6/15	15/15	64	6/15	12/15	12/15	12/15	4	1	1.5	1.5	12	67
3	15/15	9/15	64	15/9	30/15	30/15	$\beta_{ed1}:47/15$ $\beta_{ed2}:47/15$	4	2	1.5	1.5	15	92
4	2/15	15/15	64	2/15	4/15	4/15	56/75	4	1	1.5	1.5	17	71
5	15/15	15/15	64	15/15	24/15	30/15	134/15	4	1	1.5	1.5	21	81

Rel.8 DC-HSDPA (Cat 24)

SAR test exclusion for Rel.8 DC-HSDPA must satisfy the SAR test exclusion requirements of Rel.5 HSDPA. SAR test exclusion for DC-HSDPA devices is determined by power measurements according to the H-Set 12, Fixed Reference Channel (FRC) configuration in Table C.8.1.12 of 3GPP TS 34.121-1. A primary and a secondary serving HS-DSCH Cell are required to perform the power measurement and for the results to qualify for SAR test exclusion.

9.4 SAR Measurement for LTE

SAR tests for LTE are performed with a base station simulator, Rohde & Schwarz CMW500. Closed loop power control was used so the UE transmits with maximum output power during SAR testing. All powers were measured with the CMW 500.

It is performed for conducted power and SAR based on the KDB941225 D05.

SAR is evaluated separately according to the following procedures for the different test positions in each exposure condition – head, body, body-worn accessories and other use conditions. The procedures in the following subsections are applied separately to test each LTE frequency band.

1) QPSK with 1 RB allocation

Start with the largest channel bandwidth and measure SAR for QPSK with 1 RB allocation, using the RB offset and required test channel combination with the highest maximum output power among RB offsets at the upper edge, middle and lower edge of each required test channel. When the reported SAR is ≤ 0.8 W/kg, testing of the remaining RB offset configurations and required test channels is not required for 1 RB allocation; otherwise, SAR is required for the remaining required test channels and only for the RB offset configuration with the highest output power for that channel. When the reported SAR of a required test channel is > 1.45 W/kg, SAR is required for all three RB offset configurations for that required test channel.

2) QPSK with 50% RB allocation

The procedures required for 1 RB allocation in 1) are applied to measure the SAR for QPSK with 50% RB allocation.

3) QPSK with 100% RB allocation

For QPSK with 100% RB allocation, SAR is not required when the highest maximum output power for 100 % RB allocation is less than the highest maximum output power in 50% and 1 RB allocations and the highest reported SAR for 1 RB and 50% RB allocation in 1) and 2) are ≤ 0.8 W/kg. Otherwise, SAR is measured for the highest output power channel; and if the reported SAR is > 1.45 W/kg, the remaining required test channels must also be tested.

TDD test:

TDD testing is performed using guidance from FCC KDB 941225 D05 and the SAR test guidance provided in April 2013 TCB works hop notes. TDD is tested at the highest duty factor using UL-DL configuration 0 with special subframe configuration 6 and applying the FDD LTE procedures in KDB 941225 D05. SAR testing is performed using the extended cyclic prefix listed in 3GPP TS 36.211.

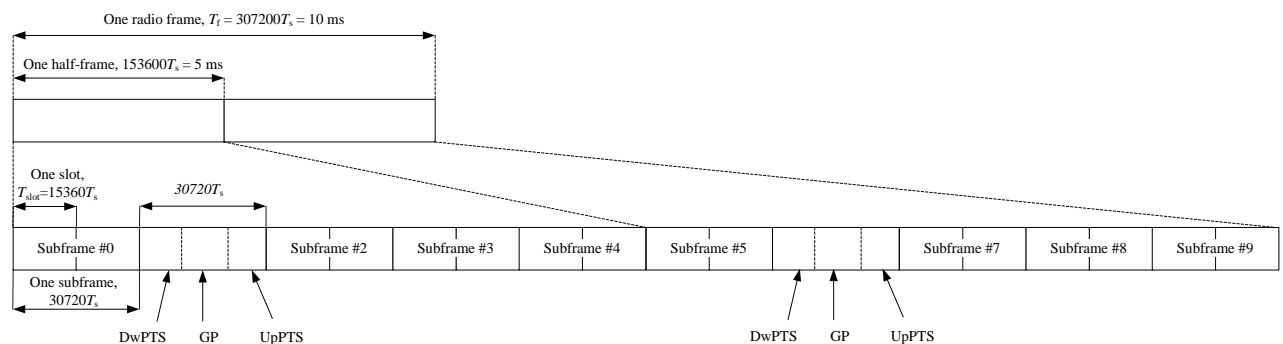


Figure 9.2: Frame structure type 2 (for 5 ms switch-point periodicity)

Table 9.1: Configuration of special subframe (lengths of DwPTS/GP/UpPTS)

Special subframe configuration	Normal cyclic prefix in downlink			Extended cyclic prefix in downlink		
	DwPTS	UpPTS		DwPTS	UpPTS	
		Normal cyclic prefix in uplink	Extended cyclic prefix in uplink		Normal cyclic prefix in uplink	Extended cyclic prefix in uplink
0	$6592 \cdot T_s$	$2192 \cdot T_s$	$2560 \cdot T_s$	$7680 \cdot T_s$	$2192 \cdot T_s$	$2560 \cdot T_s$
1	$19760 \cdot T_s$			$20480 \cdot T_s$		
2	$21952 \cdot T_s$			$23040 \cdot T_s$		
3	$24144 \cdot T_s$			$25600 \cdot T_s$		
4	$26336 \cdot T_s$			$7680 \cdot T_s$		
5	$6592 \cdot T_s$	$4384 \cdot T_s$	$5120 \cdot T_s$	$20480 \cdot T_s$	$4384 \cdot T_s$	$5120 \cdot T_s$
6	$19760 \cdot T_s$			$23040 \cdot T_s$		
7	$21952 \cdot T_s$			$12800 \cdot T_s$		
8	$24144 \cdot T_s$			-		
9	$13168 \cdot T_s$			-		

Table 9.2: Uplink-downlink configurations

Uplink-downlink configuration	Downlink-to-Uplink Switch-point periodicity	Subframe number									
		0	1	2	3	4	5	6	7	8	9
0	5 ms	D	S	U	U	U	D	S	U	U	U
1	5 ms	D	S	U	U	D	D	S	U	U	D
2	5 ms	D	S	U	D	D	D	S	U	D	D
3	10 ms	D	S	U	U	U	D	D	D	D	D
4	10 ms	D	S	U	U	D	D	D	D	D	D
5	10 ms	D	S	U	D	D	D	D	D	D	D
6	5 ms	D	S	U	U	U	D	S	U	U	D

Duty factor is calculated by:

Duty factor = uplink frame*6+UpPTS*2/one frame length

$$= (30720 \cdot T_s * 6 + 5120 \cdot T_s * 2) / 307200 \cdot T_s$$

$$= 0.633$$

9.5 Bluetooth & Wi-Fi Measurement Procedures for SAR

Normal network operating configurations are not suitable for measuring the SAR of 802.11 transmitters in general. Unpredictable fluctuations in network traffic and antenna diversity conditions can introduce undesirable variations in SAR results. The SAR for these devices should be measured using chipset based test mode software to ensure that the results are consistent and reliable.

Chipset based test mode software is hardware dependent and generally varies among manufacturers. The device operating parameters established in a test mode for SAR measurements must be identical to those programmed in production units, including output power levels, amplifier gain settings and other RF performance tuning parameters. The test frequencies should correspond to actual channel frequencies defined for domestic use. SAR for devices with switched diversity should be measured with only one antenna transmitting at a time during each SAR measurement, according to a fixed modulation and data rate. The same data pattern should be used for all measurements.

9.6 Power Drift

To control the output power stability during the SAR test, DASY5 system calculates the power drift by measuring the E-field at the same location at the beginning and at the end of the measurement for each test position. These drift values can be found in section 14 labeled as: (Power Drift [dB]). This ensures that the power drift during one measurement is within 5%.

10 Area Scan Based 1-g SAR

10.1 Requirement of KDB

According to the KDB447498 D01, when the implementation is based the specific polynomial fit algorithm as presented at the 29th Bioelectromagnetics Society meeting (2007) and the estimated 1-gSAR is ≤ 1.2 W/kg, a zoom scan measurement is not required provided it is also not needed for any other purpose; for example, if the peak SAR location required for simultaneous transmission SAR test exclusion can be determined accurately by the SAR system or manually to discriminate between distinctive peaks and scattered noisy SAR distributions from area scans.

There must not be any warning or alert messages due to various measurement concerns identified by the SAR system; for example, noise in measurements, peaks too close to scan boundary, peaks are too sharp, spatial resolution and uncertainty issues etc. The SAR system verification must also demonstrate that the area scan estimated 1-g SAR is within 3% of the zoom scan 1-g SAR (See Annex B). When all the SAR results for each exposure condition in a frequency band and wireless mode are based on estimated 1-g SAR, the 1-g SAR for the highest SAR configuration must be determined by a zoom scan.

10.2 Fast SAR Algorithms

The approach is based on the area scan measurement applying a frequency dependent attenuation parameter. This attenuation parameter was empirically determined by analyzing a large number of phones. The MOTOROLA FAST SAR was developed and validated by the MOTOROLA Research Group in Ft. Lauderdale.

In the initial study, an approximation algorithm based on Linear fit was developed. The accuracy of the algorithm has been demonstrated across a broad frequency range (136-2450 MHz) and for both 1- and 10-g averaged SAR using a sample of 264 SAR measurements from 55 wireless handsets. For the sample size studied, the root-mean-squared errors of the algorithm are 1.2% and 5.8% for 1- and 10-g averaged SAR, respectively. The paper describing the algorithm in detail is expected to be published in August 2004 within the Special Issue of Transactions on MTT.

In the second step, the same research group optimized the fitting algorithm to an Polynomial fit whereby the frequency validity was extended to cover the range 30-6000MHz. Details of this study can be found in the BEMS 2007 Proceedings.

Both algorithms are implemented in DASY software.

11 Conducted Output Power

Table11: Summary of Receiver detection mechanism

Antenna	Receiver on (head scenario)	Receiver off + Hotspot off (Body scenario)	Receiver off + Hotspot on (Hotspot scenario)
Main Antenna	Power Level A1	Power Level B1	Power Level C1

11.1 GSM Measurement result

Table 11.1-1: The conducted power measurement results-GSM850 Power Level A1/B1/C1

GSM 850 Speech (GMSK)	Measured timeslot-averaged output power (dBm)			Tune up	calculation	Source-based time-averaged output power (dBm)		
	251	190	128			251	190	128
1 Txslot	31.57	31.52	31.57	32.80	/	/	/	/
GSM 850 GPRS (GMSK)	Measured timeslot-averaged output power (dBm)				calculation	Source-based time-averaged output power (dBm)		
	251	190	128			251	190	128
1 Txslot	31.43	31.41	31.45	32.80	-9.03	22.40	22.38	22.42
2 Txslots	28.88	28.94	29.08	30.00	-6.02	22.86	22.92	23.06
3 Txslots	26.65	26.81	27.05	27.80	-4.26	22.39	22.55	22.79
4 Txslots	25.53	25.55	25.87	26.50	-3.01	22.52	22.54	22.86
GSM 850 EGPRS (GMSK)	Measured timeslot-averaged output power (dBm)				calculation	Source-based time-averaged output power (dBm)		
	251	190	128			251	190	128
1 Txslot	31.43	31.38	31.43	32.80	-9.03	22.40	22.35	22.40
2 Txslots	28.87	28.92	29.07	30.00	-6.02	22.85	22.90	23.05
3 Txslots	26.63	26.78	27.04	27.80	-4.26	22.37	22.52	22.78
4 Txslots	25.52	25.53	25.86	26.50	-3.01	22.51	22.52	22.85
GSM 850 EGPRS (8PSK)	Measured timeslot-averaged output power (dBm)				calculation	Source-based time-averaged output power (dBm)		
	251	190	128			251	190	128
1 Txslot	25.06	25.07	25.43	26.00	-9.03	16.03	16.04	16.40
2 Txslots	22.12	22.07	22.34	23.00	-6.02	16.10	16.05	16.32
3Txslots	21.01	21.18	21.13	22.00	-4.26	16.75	16.92	16.87
4 Txslots	19.04	19.03	19.28	20.00	-3.01	16.03	16.02	16.27

NOTES:

1) Division Factors

To average the power, the division factor is as follows:

1TX-slot = 1 transmit time slot out of 8 time slots=> conducted power divided by (8/1) => -9.03dB

2TX-slots = 2 transmit time slots out of 8 time slots=> conducted power divided by (8/2) => -6.02dB

3TX-slots = 3 transmit time slots out of 8 time slots=> conducted power divided by (8/3) => -4.26dB

4TX-slots = 4 transmit time slots out of 8 time slots=> conducted power divided by (8/4) => -3.01dB

According to the conducted power as above, the body measurements are performed with 2Txslots for GSM850.

Table 11.1-2: The conducted power measurement results-GSM1900 Power Level A1/B1/C1

PCS1900 Speech (GMSK)	Measured timeslot-averaged output power (dBm)			Tune up	calculation	Source-based time-averaged output power (dBm)		
	810	661	512			810	661	512
1 Txslot	30.15	29.63	29.25	30.60	/	/	/	/
PCS1900 GPRS (GMSK)	Measured timeslot-averaged output power (dBm)				calculation	Source-based time-averaged output power (dBm)		
	810	661	512			810	661	512
1 Txslot	30.11	29.56	29.18	30.60	-9.03	21.08	20.53	20.15
2 Txslots	27.56	26.84	26.75	28.00	-6.02	21.54	20.82	20.73
3 Txslots	25.52	24.63	24.52	26.00	-4.26	21.26	20.37	20.26
4 Txslots	24.25	23.45	23.12	24.60	-3.01	21.24	20.44	20.11
PCS1900 EGPRS (GMSK)	Measured timeslot-averaged output power (dBm)				calculation	Source-based time-averaged output power (dBm)		
	810	661	512			810	661	512
1 Txslot	30.06	29.52	29.13	30.60	-9.03	21.03	20.49	20.10
2 Txslots	27.52	26.81	26.54	28.00	-6.02	21.50	20.79	20.52
3Txslots	25.40	24.60	24.55	26.00	-4.26	21.14	20.34	20.29
4 Txslots	24.22	23.43	22.89	24.60	-3.01	21.21	20.42	19.88
PCS1900 EGPRS (8PSK)	Measured timeslot-averaged output power (dBm)				calculation	Source-based time-averaged output power (dBm)		
	810	661	512			810	661	512
1 Txslot	25.69	24.86	25.03	26.30	-9.03	16.66	15.83	16.00
2 Txslots	22.75	21.95	21.67	23.00	-6.02	16.73	15.93	15.65
3Txslots	20.69	20.18	19.44	21.00	-4.26	16.43	15.92	15.18
4 Txslots	19.67	18.87	18.39	20.00	-3.01	16.66	15.86	15.38

NOTES:

1) Division Factors

To average the power, the division factor is as follows:

1TX-slot = 1 transmit time slot out of 8 time slots=> conducted power divided by (8/1) => -9.03dB

2TX-slots = 2 transmit time slots out of 8 time slots=> conducted power divided by (8/2) => -6.02dB

3TX-slots = 3 transmit time slots out of 8 time slots=> conducted power divided by (8/3) => -4.26dB

4TX-slots = 4 transmit time slots out of 8 time slots=> conducted power divided by (8/4) => -3.01dB

According to the conducted power as above, the body measurements are performed with 2Txslots for GSM1900.

11.2 WCDMA Measurement result

Table 11.2-1: The conducted Power for WCDMA Band2-Power Level A1

WCDMA1900	Sub test	FDDII result (dBm)			Tune up
		9538/9938	9400/9800	9262/9662	
		(1907.6MHz)	(1880MHz)	(1852.4MHz)	
	/	24.23	23.89	23.63	25.00
HSUPA	1	21.22	20.91	20.74	22.00
	2	20.96	20.94	20.73	21.50
	3	21.97	21.90	21.70	22.50
	4	20.68	20.39	20.20	21.50
	5	21.98	21.92	21.68	22.50
HSPA+(16QAM)	/	22.95	22.98	22.96	23.50
DC-HSDPA	1	22.89	22.87	22.66	23.50
	2	22.98	22.83	22.66	23.50
	3	22.63	22.27	22.16	23.50
	4	22.53	22.36	22.18	23.50

Table 11.2-2: The conducted Power for WCDMA Band2-Power Level B1

WCDMA1900	Sub test	FDDII result (dBm)			Tune up
		9538/9938	9400/9800	9262/9662	
		(1907.6MHz)	(1880MHz)	(1852.4MHz)	
	/	21.95	21.87	21.70	23.00
HSUPA	1	19.51	19.52	19.51	20.50
	2	18.76	18.87	18.71	19.50
	3	20.15	19.89	19.70	21.00
	4	18.69	18.46	18.30	19.50
	5	20.13	19.87	19.72	21.00
HSPA+(16QAM)	/	20.68	20.31	20.15	21.50
DC-HSDPA	1	21.04	20.84	20.68	22.00
	2	21.08	20.75	20.62	22.00
	3	20.45	20.31	20.06	21.50
	4	20.57	20.27	20.05	21.50

Table 11.2-3: The conducted Power for WCDMA Band2-Power Level C1

WCDMA1900	Sub test	FDDII result (dBm)			Tune up
		9538/9938	9400/9800	9262/9662	
		(1907.6MHz)	(1880MHz)	(1852.4MHz)	
	/	20.97	20.98	20.69	22.00
HSUPA	1	18.18	18.29	18.09	19.00
	2	18.18	17.89	17.71	19.00
	3	19.17	18.87	18.72	20.50
	4	17.76	17.46	17.27	18.50
	5	19.11	18.86	18.72	20.00
HSPA+(16QAM)	/	19.63	19.39	19.15	20.00
DC-HSDPA	1	19.96	19.79	19.64	21.00
	2	20.07	19.74	19.64	21.00
	3	19.47	19.26	19.13	20.50
	4	19.42	18.32	19.11	20.00

Table 11.2-4: The conducted Power for WCDMA Band4-Power Level A1

WCDMA1700	Sub test	FDDIV result (dBm)			Tune up
		1513/1738	1412/1637	1312/1537	
		(1752.6MHz)	(1732.4MHz)	(1712.4MHz)	
	/	23.28	23.12	23.21	24.50
HSUPA	1	20.26	20.09	20.21	22.00
	2	20.28	20.18	20.26	21.50
	3	21.29	21.14	21.21	22.00
	4	19.78	19.67	19.72	21.00
	5	21.18	21.09	21.22	22.00
HSPA+(16QAM)	/	22.48	22.34	22.44	23.50
DC-HSDPA	1	22.16	22.17	22.13	23.00
	2	22.04	21.97	22.16	23.00
	3	21.69	21.54	21.56	23.50
	4	21.55	21.52	21.67	23.50

Table 11.2-5: The conducted Power for WCDMA Band4-Power Level B1

WCDMA1700	Sub test	FDDIV result (dBm)			Tune up
		1513/1738	1412/1637	1312/1537	
		(1752.6MHz)	(1732.4MHz)	(1712.4MHz)	
	/	21.30	21.18	21.26	22.50
HSUPA	1	18.64	18.16	18.22	19.50
	2	18.30	18.18	18.24	19.50
	3	19.27	19.13	19.14	20.00
	4	17.88	17.73	17.72	18.50
	5	19.21	19.06	19.02	20.00
HSPA+(16QAM)	/	19.67	19.54	19.68	20.50
DC-HSDPA	1	20.14	20.04	20.18	21.00
	2	20.13	20.03	20.05	21.00
	3	19.51	19.56	19.67	20.50
	4	19.61	19.52	19.53	20.50

Table 11.2-6: The conducted Power for WCDMA Band4-Power Level C1

WCDMA1700	Sub test	FDDIV result (dBm)			Tune up
		1513/1738	1412/1637	1312/1537	
		(1752.6MHz)	(1732.4MHz)	(1712.4MHz)	
	/	20.42	20.14	20.26	21.50
HSUPA	1	17.57	17.50	17.55	18.50
	2	17.26	17.18	17.25	18.50
	3	18.26	18.18	18.23	19.00
	4	16.81	16.71	16.76	17.80
	5	18.18	18.12	18.17	19.00
HSPA+(16QAM)	/	18.77	18.64	18.59	19.50
DC-HSDPA	1	19.10	18.97	19.15	20.00
	2	19.06	19.02	19.09	20.00
	3	18.62	18.53	18.65	19.50
	4	18.59	18.64	18.65	19.50

Table 11.2-7: The conducted Power for WCDMA Band5-Power Level A1/B1/C1

WCDMA850	Sub test	FDDV result (dBm)			Tune up
		4233/4458	4183/4408	4132/4357	
		(846.6MHz)	(836.6MHz)	(826.4MHz)	
	/	23.90	23.72	23.63	24.00
HSUPA	1	21.09	20.81	20.67	21.00
	2	20.97	20.84	20.71	21.00
	3	20.98	21.89	21.65	22.00
	4	20.63	20.34	20.20	21.00
	5	21.97	21.74	21.64	22.00
HSPA+(16QAM)	/	22.96	22.73	22.56	23.00
DC-HSDPA	1	22.56	22.34	22.18	23.00
	2	22.48	22.38	22.11	23.00
	3	22.83	22.79	22.45	23.00
	4	22.78	22.67	22.45	23.00

11.3 LTE Measurement result

Maximum Target Power for Production Unit – Power Level A1/B1/C1

Band	Tune up (dBm)		
	Receiver on (head scenario)	Receiver off + Hotspot off (Body scenario)	Receiver off + Hotspot on (Hotspot scenario)
	Level A1	Level B1	Level C1
Band 2	25.5	23.5	22.5
Band 5	25.5	25.5	25.5
Band 7	25	21	21
Band 12	25.5	25.5	25.5
Band 13	25.5	25.5	25.5
Band 66	25.5	23.5	22.5

LTE B2-Power Level A1				
BANDWIDTH	Number of RBs	Frequency	QPSK	16QAM
1.4MHz	1RB-High (5)	1909.3 (19193)	24.73	23.87
		1880 (18900)	24.44	23.60
		1850.7 (18607)	24.42	23.61
	1RB-Middle (3)	1909.3 (19193)	24.84	23.96
		1880 (18900)	24.54	23.84
		1850.7 (18607)	24.51	23.79
	1RB-Low (0)	1909.3 (19193)	24.72	23.97
		1880 (18900)	24.42	23.73
		1850.7 (18607)	24.44	23.59
	3RB-High (3)	1909.3 (19193)	24.85	23.74
		1880 (18900)	24.57	23.52
		1850.7 (18607)	24.50	23.56
	3RB-Middle (1)	1909.3 (19193)	24.91	23.81
		1880 (18900)	24.61	23.59
		1850.7 (18607)	24.55	23.58
	3RB-Low (0)	1909.3 (19193)	24.82	23.79
		1880 (18900)	24.55	23.52
		1850.7 (18607)	24.50	23.45
	6RB (0)	1909.3 (19193)	23.93	22.96
		1880 (18900)	23.58	22.64
		1850.7 (18607)	23.55	22.60
3MHz	1RB-High (14)	1908.5 (19185)	24.76	24.08
		1880 (18900)	24.51	23.74
		1851.5 (18615)	24.42	23.73
	1RB-Middle (7)	1908.5 (19185)	24.93	24.07
		1880 (18900)	24.65	23.81
		1851.5 (18615)	24.63	23.86
	1RB-Low (0)	1908.5 (19185)	24.73	23.93
		1880 (18900)	24.50	23.78
		1851.5 (18615)	24.45	23.73
	8RB-High (7)	1908.5 (19185)	23.84	22.88
		1880 (18900)	23.58	22.60
		1851.5 (18615)	23.49	22.53
	8RB-Middle (4)	1908.5 (19185)	23.89	22.95
		1880 (18900)	23.59	22.63
		1851.5 (18615)	23.55	22.59
	8RB-Low (0)	1908.5 (19185)	23.85	22.90
		1880 (18900)	23.58	22.62
		1851.5 (18615)	23.52	22.58
	15RB (0)	1908.5 (19185)	23.89	22.88
		1880 (18900)	23.61	22.59
		1851.5 (18615)	23.50	22.50

5MHz	1RB-High (24)	1907.5 (19175)	24.66	23.90	
		1880 (18900)	24.44	23.66	
		1852.5 (18625)	24.32	23.63	
	1RB-Middle (12)	1907.5 (19175)	24.88	24.13	
		1880 (18900)	24.68	23.91	
		1852.5 (18625)	24.65	23.83	
	1RB-Low (0)	1907.5 (19175)	24.65	23.82	
		1880 (18900)	24.44	23.63	
		1852.5 (18625)	24.40	23.64	
	12RB-High (13)	1907.5 (19175)	23.81	22.78	
		1880 (18900)	23.60	22.60	
		1852.5 (18625)	23.50	22.47	
	12RB-Middle (6)	1907.5 (19175)	23.90	22.87	
		1880 (18900)	23.66	22.65	
		1852.5 (18625)	23.57	22.54	
	12RB-Low (0)	1907.5 (19175)	23.87	22.86	
		1880 (18900)	23.60	22.56	
		1852.5 (18625)	23.52	22.50	
	25RB (0)	1907.5 (19175)	23.87	22.85	
		1880 (18900)	23.63	22.62	
		1852.5 (18625)	23.52	22.52	
	10MHz	1RB-High (49)	1905 (19150)	24.77	24.02
			1880 (18900)	24.58	23.76
			1855 (18650)	24.43	23.72
1RB-Middle (24)		1905 (19150)	24.82	23.97	
		1880 (18900)	24.57	23.85	
		1855 (18650)	24.48	23.75	
1RB-Low (0)		1905 (19150)	24.69	23.92	
		1880 (18900)	24.48	23.76	
		1855 (18650)	24.49	23.76	
25RB-High (25)		1905 (19150)	23.84	22.80	
		1880 (18900)	23.64	22.65	
		1855 (18650)	23.58	22.56	
25RB-Middle (12)		1905 (19150)	23.89	22.86	
		1880 (18900)	23.63	22.61	
		1855 (18650)	23.56	22.55	
25RB-Low (0)		1905 (19150)	23.92	22.89	
		1880 (18900)	23.65	22.64	
		1855 (18650)	23.59	22.60	
50RB (0)		1905 (19150)	23.90	22.88	
		1880 (18900)	23.68	22.63	
		1855 (18650)	23.58	22.59	

15MHz	1RB-High (74)	1902.5 (19125)	24.73	23.94
		1880 (18900)	24.53	23.72
		1857.5 (18675)	24.37	23.64
	1RB-Middle (37)	1902.5 (19125)	24.74	23.96
		1880 (18900)	24.52	23.80
		1857.5 (18675)	24.49	23.70
	1RB-Low (0)	1902.5 (19125)	24.62	23.85
		1880 (18900)	24.43	23.59
		1857.5 (18675)	24.41	23.63
	36RB-High (38)	1902.5 (19125)	23.86	22.83
		1880 (18900)	23.70	22.66
		1857.5 (18675)	23.61	22.52
	36RB-Middle (19)	1902.5 (19125)	23.87	22.81
		1880 (18900)	23.67	22.60
		1857.5 (18675)	23.58	22.52
	36RB-Low (0)	1902.5 (19125)	23.84	22.79
		1880 (18900)	23.66	22.62
		1857.5 (18675)	23.58	22.50
75RB (0)	1902.5 (19125)	23.84	22.79	
	1880 (18900)	23.65	22.60	
	1857.5 (18675)	23.56	22.54	
20MHz	1RB-High (99)	1900 (19100)	24.54	23.83
		1880 (18900)	24.33	23.61
		1860 (18700)	24.18	23.53
	1RB-Middle (50)	1900 (19100)	24.69	23.96
		1880 (18900)	24.62	23.90
		1860 (18700)	24.45	23.79
	1RB-Low (0)	1900 (19100)	24.35	23.56
		1880 (18900)	24.24	23.53
		1860 (18700)	24.22	23.48
	50RB-High (50)	1900 (19100)	23.73	22.70
		1880 (18900)	23.61	22.62
		1860 (18700)	23.54	22.52
	50RB-Middle (25)	1900 (19100)	23.83	22.76
		1880 (18900)	23.62	22.60
		1860 (18700)	23.54	22.53
	50RB-Low (0)	1900 (19100)	23.80	22.78
		1880 (18900)	23.62	22.62
		1860 (18700)	23.53	22.50
100RB (0)	1900 (19100)	23.72	22.70	
	1880 (18900)	23.63	22.61	
	1860 (18700)	23.54	22.50	

LTE B2-Power Level B1				
BANDWIDTH	Number of RBs	Frequency	QPSK	16QAM
1.4MHz	1RB-High (5)	1909.3 (19193)	22.76	23.03
		1880 (18900)	22.48	22.67
		1850.7 (18607)	22.45	22.71
	1RB-Middle (3)	1909.3 (19193)	22.94	23.05
		1880 (18900)	22.62	22.75
		1850.7 (18607)	22.58	22.82
	1RB-Low (0)	1909.3 (19193)	22.80	23.07
		1880 (18900)	22.49	22.69
		1850.7 (18607)	22.46	22.71
	3RB-High (3)	1909.3 (19193)	22.91	22.81
		1880 (18900)	22.64	22.58
		1850.7 (18607)	22.54	22.52
	3RB-Middle (1)	1909.3 (19193)	22.97	22.86
		1880 (18900)	22.65	22.63
		1850.7 (18607)	22.60	22.57
	3RB-Low (0)	1909.3 (19193)	22.90	22.89
		1880 (18900)	22.56	22.54
		1850.7 (18607)	22.57	22.58
	6RB (0)	1909.3 (19193)	22.94	22.97
		1880 (18900)	22.58	22.66
		1850.7 (18607)	22.54	22.65
3MHz	1RB-High (14)	1908.5 (19185)	22.85	23.09
		1880 (18900)	22.57	22.89
		1851.5 (18615)	22.48	22.65
	1RB-Middle (7)	1908.5 (19185)	22.93	23.20
		1880 (18900)	22.74	22.99
		1851.5 (18615)	22.69	22.90
	1RB-Low (0)	1908.5 (19185)	22.82	22.99
		1880 (18900)	22.54	22.84
		1851.5 (18615)	22.51	22.83
	8RB-High (7)	1908.5 (19185)	22.87	22.92
		1880 (18900)	22.60	22.66
		1851.5 (18615)	22.49	22.51
	8RB-Middle (4)	1908.5 (19185)	22.92	22.95
		1880 (18900)	22.62	22.68
		1851.5 (18615)	22.55	22.59
	8RB-Low (0)	1908.5 (19185)	22.85	22.89
		1880 (18900)	22.58	22.63
		1851.5 (18615)	22.54	22.60
15RB (0)	1908.5 (19185)	22.89	22.89	
	1880 (18900)	22.58	22.60	
	1851.5 (18615)	22.49	22.50	

5MHz	1RB-High (24)	1907.5 (19175)	22.75	22.95
		1880 (18900)	22.47	22.77
		1852.5 (18625)	22.36	22.66
	1RB-Middle (12)	1907.5 (19175)	22.91	23.14
		1880 (18900)	22.73	22.84
		1852.5 (18625)	22.65	22.89
	1RB-Low (0)	1907.5 (19175)	22.68	22.86
		1880 (18900)	22.47	22.74
		1852.5 (18625)	22.44	22.61
	12RB-High (13)	1907.5 (19175)	22.84	22.80
		1880 (18900)	22.61	22.56
		1852.5 (18625)	22.53	22.49
	12RB-Middle (6)	1907.5 (19175)	22.91	22.85
		1880 (18900)	22.67	22.62
		1852.5 (18625)	22.59	22.51
	12RB-Low (0)	1907.5 (19175)	22.89	22.87
		1880 (18900)	22.58	22.59
		1852.5 (18625)	22.51	22.49
25RB (0)	1907.5 (19175)	22.88	22.86	
	1880 (18900)	22.61	22.62	
	1852.5 (18625)	22.52	22.52	
10MHz	1RB-High (49)	1905 (19150)	22.87	23.11
		1880 (18900)	22.64	22.93
		1855 (18650)	22.50	22.75
	1RB-Middle (24)	1905 (19150)	22.87	23.14
		1880 (18900)	22.66	22.95
		1855 (18650)	22.58	22.89
	1RB-Low (0)	1905 (19150)	22.75	23.01
		1880 (18900)	22.54	22.73
		1855 (18650)	22.52	22.77
	25RB-High (25)	1905 (19150)	22.85	22.81
		1880 (18900)	22.66	22.68
		1855 (18650)	22.59	22.57
	25RB-Middle (12)	1905 (19150)	22.88	22.86
		1880 (18900)	22.66	22.65
		1855 (18650)	22.56	22.56
	25RB-Low (0)	1905 (19150)	22.93	22.89
		1880 (18900)	22.64	22.62
		1855 (18650)	22.57	22.59
50RB (0)	1905 (19150)	22.91	22.84	
	1880 (18900)	22.66	22.67	
	1855 (18650)	22.58	22.58	

15MHz	1RB-High (74)	1902.5 (19125)	22.80	23.05
		1880 (18900)	22.58	22.76
		1857.5 (18675)	22.42	22.77
	1RB-Middle (37)	1902.5 (19125)	22.81	23.08
		1880 (18900)	22.61	22.84
		1857.5 (18675)	22.53	22.85
	1RB-Low (0)	1902.5 (19125)	22.67	22.83
		1880 (18900)	22.54	22.82
		1857.5 (18675)	22.47	22.65
	36RB-High (38)	1902.5 (19125)	22.87	22.82
		1880 (18900)	22.70	22.64
		1857.5 (18675)	22.58	22.54
	36RB-Middle (19)	1902.5 (19125)	22.87	22.83
		1880 (18900)	22.65	22.62
		1857.5 (18675)	22.57	22.51
	36RB-Low (0)	1902.5 (19125)	22.87	22.79
		1880 (18900)	22.62	22.59
		1857.5 (18675)	22.57	22.53
75RB (0)	1902.5 (19125)	22.85	22.81	
	1880 (18900)	22.65	22.61	
	1857.5 (18675)	22.57	22.56	
20MHz	1RB-High (99)	1900 (19100)	22.67	22.93
		1880 (18900)	22.42	22.73
		1860 (18700)	22.28	22.66
	1RB-Middle (50)	1900 (19100)	22.88	22.89
		1880 (18900)	22.69	22.94
		1860 (18700)	22.60	22.81
	1RB-Low (0)	1900 (19100)	22.50	22.70
		1880 (18900)	22.36	22.66
		1860 (18700)	22.34	22.59
	50RB-High (50)	1900 (19100)	22.83	22.75
		1880 (18900)	22.69	22.72
		1860 (18700)	22.59	22.57
	50RB-Middle (25)	1900 (19100)	22.92	22.83
		1880 (18900)	22.67	22.65
		1860 (18700)	22.61	22.59
	50RB-Low (0)	1900 (19100)	22.89	22.84
		1880 (18900)	22.67	22.68
		1860 (18700)	22.58	22.56
100RB (0)	1900 (19100)	22.81	22.77	
	1880 (18900)	22.71	22.67	
	1860 (18700)	22.58	22.57	

LTE B2-Power Level C1				
BANDWIDTH	Number of RBs	Frequency	QPSK	16QAM
1.4MHz	1RB-High (5)	1909.3 (19193)	21.79	22.04
		1880 (18900)	21.51	21.86
		1850.7 (18607)	21.47	21.70
	1RB-Middle (3)	1909.3 (19193)	21.92	22.13
		1880 (18900)	21.63	21.85
		1850.7 (18607)	21.58	21.85
	1RB-Low (0)	1909.3 (19193)	21.80	22.04
		1880 (18900)	21.49	21.79
		1850.7 (18607)	21.47	21.73
	3RB-High (3)	1909.3 (19193)	21.91	21.85
		1880 (18900)	21.60	21.52
		1850.7 (18607)	21.58	21.51
	3RB-Middle (1)	1909.3 (19193)	21.95	21.94
		1880 (18900)	21.66	21.63
		1850.7 (18607)	21.59	21.62
	3RB-Low (0)	1909.3 (19193)	21.93	21.90
		1880 (18900)	21.59	21.62
		1850.7 (18607)	21.55	21.57
	6RB (0)	1909.3 (19193)	21.90	22.01
		1880 (18900)	21.58	21.70
		1850.7 (18607)	21.56	21.64
3MHz	1RB-High (14)	1908.5 (19185)	21.85	22.21
		1880 (18900)	21.58	21.82
		1851.5 (18615)	21.48	21.82
	1RB-Middle (7)	1908.5 (19185)	21.98	22.29
		1880 (18900)	21.77	22.01
		1851.5 (18615)	21.68	21.97
	1RB-Low (0)	1908.5 (19185)	21.83	22.04
		1880 (18900)	21.56	21.86
		1851.5 (18615)	21.52	21.84
	8RB-High (7)	1908.5 (19185)	21.87	21.89
		1880 (18900)	21.59	21.68
		1851.5 (18615)	21.50	21.59
	8RB-Middle (4)	1908.5 (19185)	21.93	21.98
		1880 (18900)	21.61	21.66
		1851.5 (18615)	21.55	21.60
	8RB-Low (0)	1908.5 (19185)	21.85	21.91
		1880 (18900)	21.60	21.66
		1851.5 (18615)	21.54	21.59
	15RB (0)	1908.5 (19185)	21.88	21.89
		1880 (18900)	21.62	21.64
		1851.5 (18615)	21.51	21.54

5MHz	1RB-High (24)	1907.5 (19175)	21.76	22.00	
		1880 (18900)	21.47	21.83	
		1852.5 (18625)	21.37	21.63	
	1RB-Middle (12)	1907.5 (19175)	21.95	22.25	
		1880 (18900)	21.70	22.03	
		1852.5 (18625)	21.67	22.00	
	1RB-Low (0)	1907.5 (19175)	21.71	21.92	
		1880 (18900)	21.44	21.79	
		1852.5 (18625)	21.41	21.77	
	12RB-High (13)	1907.5 (19175)	21.86	21.83	
		1880 (18900)	21.58	21.61	
		1852.5 (18625)	21.47	21.50	
	12RB-Middle (6)	1907.5 (19175)	21.92	21.89	
		1880 (18900)	21.65	21.66	
		1852.5 (18625)	21.56	21.57	
	12RB-Low (0)	1907.5 (19175)	21.90	21.87	
		1880 (18900)	21.57	21.61	
		1852.5 (18625)	21.50	21.51	
	25RB (0)	1907.5 (19175)	21.88	21.87	
		1880 (18900)	21.58	21.65	
		1852.5 (18625)	21.50	21.54	
	10MHz	1RB-High (49)	1905 (19150)	21.89	22.20
			1880 (18900)	21.63	21.95
			1855 (18650)	21.47	21.85
1RB-Middle (24)		1905 (19150)	21.92	22.20	
		1880 (18900)	21.68	21.95	
		1855 (18650)	21.58	21.86	
1RB-Low (0)		1905 (19150)	21.73	21.94	
		1880 (18900)	21.56	21.74	
		1855 (18650)	21.55	21.85	
25RB-High (25)		1905 (19150)	21.86	21.83	
		1880 (18900)	21.58	21.66	
		1855 (18650)	21.52	21.62	
25RB-Middle (12)		1905 (19150)	21.89	21.87	
		1880 (18900)	21.62	21.63	
		1855 (18650)	21.55	21.56	
25RB-Low (0)		1905 (19150)	21.94	21.92	
		1880 (18900)	21.60	21.67	
		1855 (18650)	21.56	21.59	
50RB (0)		1905 (19150)	21.89	21.91	
		1880 (18900)	21.59	21.66	
		1855 (18650)	21.55	21.60	

15MHz	1RB-High (74)	1902.5 (19125)	21.80	22.02
		1880 (18900)	21.63	21.78
		1857.5 (18675)	21.38	21.73
	1RB-Middle (37)	1902.5 (19125)	21.80	22.02
		1880 (18900)	21.60	21.93
		1857.5 (18675)	21.51	21.88
	1RB-Low (0)	1902.5 (19125)	21.66	22.02
		1880 (18900)	21.53	21.80
		1857.5 (18675)	21.45	21.73
	36RB-High (38)	1902.5 (19125)	21.88	21.85
		1880 (18900)	21.65	21.67
		1857.5 (18675)	21.56	21.58
	36RB-Middle (19)	1902.5 (19125)	21.86	21.82
		1880 (18900)	21.65	21.61
		1857.5 (18675)	21.56	21.56
	36RB-Low (0)	1902.5 (19125)	21.81	21.83
		1880 (18900)	21.60	21.57
		1857.5 (18675)	21.55	21.57
75RB (0)	1902.5 (19125)	21.81	21.85	
	1880 (18900)	21.64	21.64	
	1857.5 (18675)	21.53	21.57	
20MHz	1RB-High (99)	1900 (19100)	21.65	21.98
		1880 (18900)	21.43	21.65
		1860 (18700)	21.27	21.63
	1RB-Middle (50)	1900 (19100)	21.84	21.97
		1880 (18900)	21.69	21.89
		1860 (18700)	21.62	21.84
	1RB-Low (0)	1900 (19100)	21.46	21.80
		1880 (18900)	21.37	21.70
		1860 (18700)	21.33	21.64
	50RB-High (50)	1900 (19100)	21.80	21.77
		1880 (18900)	21.62	21.68
		1860 (18700)	21.52	21.57
	50RB-Middle (25)	1900 (19100)	21.85	21.85
		1880 (18900)	21.79	21.66
		1860 (18700)	21.59	21.60
	50RB-Low (0)	1900 (19100)	21.83	21.85
		1880 (18900)	21.62	21.64
		1860 (18700)	21.55	21.52
100RB (0)	1900 (19100)	21.78	21.77	
	1880 (18900)	21.65	21.67	
	1860 (18700)	21.54	21.57	

LTE B5-Power Level A1/B1/C1					
BANDWIDTH	Number of RBs	Frequency	QPSK	16QAM	
1.4MHz	1RB-High (5)	848.3 (20643)	25.10	24.20	
		836.5 (20525)	24.75	23.79	
		824.7 (20407)	24.56	23.79	
	1RB-Middle (3)	848.3 (20643)	25.17	24.37	
		836.5 (20525)	24.87	24.06	
		824.7 (20407)	24.69	23.80	
	1RB-Low (0)	848.3 (20643)	25.04	24.18	
		836.5 (20525)	24.68	23.89	
		824.7 (20407)	24.52	23.69	
	3RB-High (3)	848.3 (20643)	25.23	24.06	
		836.5 (20525)	24.83	23.72	
		824.7 (20407)	24.65	23.58	
	3RB-Middle (1)	848.3 (20643)	25.21	24.14	
		836.5 (20525)	24.89	23.82	
		824.7 (20407)	24.71	23.67	
	3RB-Low (0)	848.3 (20643)	25.19	24.09	
		836.5 (20525)	24.80	23.72	
		824.7 (20407)	24.65	23.61	
	6RB (0)	848.3 (20643)	24.25	23.28	
		836.5 (20525)	23.81	22.89	
		824.7 (20407)	23.70	22.73	
	3MHz	1RB-High (14)	847.5 (20635)	25.13	24.28
			836.5 (20525)	24.77	23.88
			825.5 (20415)	24.58	23.83
		1RB-Middle (7)	847.5 (20635)	25.30	24.42
			836.5 (20525)	24.96	24.07
			825.5 (20415)	24.75	23.83
1RB-Low (0)		847.5 (20635)	25.03	24.13	
		836.5 (20525)	24.75	23.88	
		825.5 (20415)	24.61	23.67	
8RB-High (7)		847.5 (20635)	24.14	23.15	
		836.5 (20525)	23.81	22.85	
		825.5 (20415)	23.60	22.63	
8RB-Middle (4)		847.5 (20635)	24.16	23.20	
		836.5 (20525)	23.84	22.89	
		825.5 (20415)	23.65	22.69	
8RB-Low (0)		847.5 (20635)	24.10	23.11	
		836.5 (20525)	23.77	22.80	
		825.5 (20415)	23.62	22.66	
15RB (0)		847.5 (20635)	24.15	23.13	
		836.5 (20525)	23.79	22.80	
		825.5 (20415)	23.62	22.62	

5MHz	1RB-High (24)	846.5 (20625)	25.07	24.19
		836.5 (20525)	24.71	23.81
		826.5 (20425)	24.54	23.72
	1RB-Middle (12)	846.5 (20625)	25.14	24.29
		836.5 (20525)	24.99	24.11
		826.5 (20425)	24.78	23.94
	1RB-Low (0)	846.5 (20625)	24.88	24.08
		836.5 (20525)	24.61	23.84
		826.5 (20425)	24.50	23.76
	12RB-High (13)	846.5 (20625)	24.09	23.07
		836.5 (20525)	23.83	22.75
		826.5 (20425)	23.65	22.60
	12RB-Middle (6)	846.5 (20625)	24.14	23.12
		836.5 (20525)	23.86	22.80
		826.5 (20425)	23.66	22.64
	12RB-Low (0)	846.5 (20625)	24.04	23.04
		836.5 (20525)	23.81	22.76
		826.5 (20425)	23.58	22.56
	25RB (0)	846.5 (20625)	24.13	23.12
		836.5 (20525)	23.83	22.80
		826.5 (20425)	23.63	22.60
10MHz	1RB-High (49)	844 (20600)	24.94	23.95
		836.5 (20525)	24.75	23.74
		829 (20450)	24.67	23.61
	1RB-Middle (24)	844 (20600)	24.87	23.97
		836.5 (20525)	24.69	23.78
		829 (20450)	24.51	23.71
	1RB-Low (0)	844 (20600)	24.62	23.83
		836.5 (20525)	24.49	23.64
		829 (20450)	24.36	23.60
	25RB-High (25)	844 (20600)	23.93	22.88
		836.5 (20525)	23.78	22.68
		829 (20450)	23.66	22.55
	25RB-Middle (12)	844 (20600)	23.90	22.85
		836.5 (20525)	23.66	22.66
		829 (20450)	23.52	22.48
	25RB-Low (0)	844 (20600)	23.86	22.83
		836.5 (20525)	23.64	22.62
		829 (20450)	23.46	22.43
50RB (0)	844 (20600)	23.89	22.85	
	836.5 (20525)	23.67	22.64	
	829 (20450)	23.49	22.49	

LTE B7-Power Level A1					
BANDWIDTH	Number of RBs	Frequency	QPSK	16QAM	
5MHz	1RB-High (24)	2567.5 (21425)	24.37	23.52	
		2535 (21100)	24.00	23.26	
		2502.5 (20775)	23.53	22.76	
	1RB-Middle (12)	2567.5 (21425)	24.67	23.86	
		2535 (21100)	24.28	23.42	
		2502.5 (20775)	23.79	23.01	
	1RB-Low (0)	2567.5 (21425)	24.34	23.56	
		2535 (21100)	23.95	23.20	
		2502.5 (20775)	23.58	22.73	
	12RB-High (13)	2567.5 (21425)	23.51	22.48	
		2535 (21100)	23.12	22.08	
		2502.5 (20775)	22.69	21.68	
	12RB-Middle (6)	2567.5 (21425)	23.56	22.50	
		2535 (21100)	23.16	22.14	
		2502.5 (20775)	22.74	21.72	
	12RB-Low (0)	2567.5 (21425)	23.55	22.50	
		2535 (21100)	23.07	22.03	
		2502.5 (20775)	22.66	21.62	
	25RB (0)	2567.5 (21425)	23.54	22.52	
		2535 (21100)	23.10	22.08	
		2502.5 (20775)	22.66	21.65	
	10MHz	1RB-High (49)	2565 (21400)	24.44	23.74
			2535 (21100)	24.14	23.37
			2505 (20800)	23.74	23.03
1RB-Middle (24)		2565 (21400)	24.50	23.70	
		2535 (21100)	24.19	23.46	
		2505 (20800)	23.78	23.00	
1RB-Low (0)		2565 (21400)	24.39	23.57	
		2535 (21100)	23.99	23.22	
		2505 (20800)	23.65	22.89	
25RB-High (25)		2565 (21400)	23.55	22.51	
		2535 (21100)	23.18	22.16	
		2505 (20800)	22.75	21.75	
25RB-Middle (12)		2565 (21400)	23.57	22.54	
		2535 (21100)	23.19	22.16	
		2505 (20800)	22.78	21.75	
25RB-Low (0)		2565 (21400)	23.62	22.61	
		2535 (21100)	23.11	22.09	
		2505 (20800)	22.68	21.64	
50RB (0)		2565 (21400)	23.58	22.56	
		2535 (21100)	23.17	22.14	
		2505 (20800)	22.73	21.70	

15MHz	1RB-High (74)	2562.5 (21375)	24.41	23.60
		2535 (21100)	24.12	23.30
		2507.5 (20825)	23.72	22.92
	1RB-Middle (37)	2562.5 (21375)	24.46	23.64
		2535 (21100)	24.14	23.27
		2507.5 (20825)	23.72	22.82
	1RB-Low (0)	2562.5 (21375)	24.36	23.50
		2535 (21100)	23.91	23.04
		2507.5 (20825)	23.60	22.78
	36RB-High (38)	2562.5 (21375)	23.56	22.49
		2535 (21100)	23.26	22.20
		2507.5 (20825)	22.83	21.75
	36RB-Middle (19)	2562.5 (21375)	23.57	22.48
		2535 (21100)	23.21	22.17
		2507.5 (20825)	22.80	21.73
	36RB-Low (0)	2562.5 (21375)	23.59	22.49
		2535 (21100)	23.16	22.08
		2507.5 (20825)	22.70	21.65
75RB (0)	2562.5 (21375)	23.59	22.52	
	2535 (21100)	23.19	22.11	
	2507.5 (20825)	22.75	21.72	
20MHz	1RB-High (99)	2560 (21350)	24.08	23.34
		2535 (21100)	23.83	23.10
		2510 (20850)	23.62	22.83
	1RB-Middle (50)	2560 (21350)	24.37	23.48
		2535 (21100)	24.10	23.34
		2510 (20850)	23.95	23.09
	1RB-Low (0)	2560 (21350)	24.03	23.29
		2535 (21100)	23.72	22.89
		2510 (20850)	23.55	22.75
	50RB-High (50)	2560 (21350)	23.38	22.36
		2535 (21100)	23.13	22.09
		2510 (20850)	22.89	21.87
	50RB-Middle (25)	2560 (21350)	23.45	22.41
		2535 (21100)	23.13	22.09
		2510 (20850)	22.93	21.87
	50RB-Low (0)	2560 (21350)	23.42	22.37
		2535 (21100)	23.08	22.01
		2510 (20850)	22.80	21.74
100RB (0)	2560 (21350)	23.38	22.32	
	2535 (21100)	23.08	22.04	
	2510 (20850)	22.84	21.81	

LTE B7-Power Level B1/C1				
BANDWIDTH	Number of RBs	Frequency	QPSK	16QAM
5MHz	1RB-High (24)	2567.5 (21425)	20.42	20.72
		2535 (21100)	20.05	20.39
		2502.5 (20775)	19.61	19.90
	1RB-Middle (12)	2567.5 (21425)	20.67	20.85
		2535 (21100)	20.25	20.64
		2502.5 (20775)	19.93	20.21
	1RB-Low (0)	2567.5 (21425)	20.39	20.66
		2535 (21100)	19.97	20.28
		2502.5 (20775)	19.58	19.89
	12RB-High (13)	2567.5 (21425)	20.50	20.49
		2535 (21100)	20.16	20.14
		2502.5 (20775)	19.72	19.67
	12RB-Middle (6)	2567.5 (21425)	20.58	20.54
		2535 (21100)	20.18	20.16
		2502.5 (20775)	19.75	19.76
	12RB-Low (0)	2567.5 (21425)	20.55	20.56
		2535 (21100)	20.08	20.09
		2502.5 (20775)	19.66	19.65
	25RB (0)	2567.5 (21425)	20.54	20.53
		2535 (21100)	20.12	20.12
		2502.5 (20775)	19.69	19.71
10MHz	1RB-High (49)	2565 (21400)	20.50	20.70
		2535 (21100)	20.19	20.56
		2505 (20800)	19.77	20.13
	1RB-Middle (24)	2565 (21400)	20.59	20.89
		2535 (21100)	20.23	20.53
		2505 (20800)	19.82	20.15
	1RB-Low (0)	2565 (21400)	20.46	20.62
		2535 (21100)	20.07	20.44
		2505 (20800)	19.70	19.94
	25RB-High (25)	2565 (21400)	20.52	20.54
		2535 (21100)	20.21	20.21
		2505 (20800)	19.78	19.79
	25RB-Middle (12)	2565 (21400)	20.60	20.62
		2535 (21100)	20.21	20.20
		2505 (20800)	19.80	19.80
	25RB-Low (0)	2565 (21400)	20.60	20.60
		2535 (21100)	20.17	20.14
		2505 (20800)	19.70	19.71
50RB (0)	2565 (21400)	20.57	20.56	
	2535 (21100)	20.17	20.18	
	2505 (20800)	19.75	19.75	

15MHz	1RB-High (74)	2562.5 (21375)	20.51	20.70
		2535 (21100)	20.22	20.54
		2507.5 (20825)	19.75	20.15
	1RB-Middle (37)	2562.5 (21375)	20.55	20.76
		2535 (21100)	20.20	20.56
		2507.5 (20825)	19.77	20.14
	1RB-Low (0)	2562.5 (21375)	20.48	20.71
		2535 (21100)	20.04	20.31
		2507.5 (20825)	19.67	20.01
	36RB-High (38)	2562.5 (21375)	20.61	20.55
		2535 (21100)	20.32	20.29
		2507.5 (20825)	19.86	19.83
	36RB-Middle (19)	2562.5 (21375)	20.63	20.59
		2535 (21100)	20.27	20.23
		2507.5 (20825)	19.86	19.79
	36RB-Low (0)	2562.5 (21375)	20.62	20.59
		2535 (21100)	20.21	20.16
		2507.5 (20825)	19.76	19.71
	75RB (0)	2562.5 (21375)	20.59	20.58
		2535 (21100)	20.22	20.22
		2507.5 (20825)	19.80	19.80
20MHz	1RB-High (99)	2560 (21350)	20.22	20.46
		2535 (21100)	19.90	20.16
		2510 (20850)	19.68	20.02
	1RB-Middle (50)	2560 (21350)	20.45	20.49
		2535 (21100)	20.33	20.42
		2510 (20850)	20.25	20.30
	1RB-Low (0)	2560 (21350)	20.14	20.49
		2535 (21100)	19.83	20.04
		2510 (20850)	19.61	19.95
	50RB-High (50)	2560 (21350)	20.39	20.42
		2535 (21100)	20.16	20.21
		2510 (20850)	19.93	19.95
	50RB-Middle (25)	2560 (21350)	20.48	20.47
		2535 (21100)	20.37	20.18
		2510 (20850)	20.25	19.97
	50RB-Low (0)	2560 (21350)	20.45	20.47
		2535 (21100)	20.11	20.12
		2510 (20850)	19.82	19.84
	100RB (0)	2560 (21350)	20.42	20.42
		2535 (21100)	20.34	20.16
		2510 (20850)	20.11	19.86

LTE B12-Power Level A1/B1/C1					
BANDWIDTH	Number of RBs	Frequency	QPSK	16QAM	
1.4MHz	1RB-High (5)	715.3 (23173)	25.12	24.27	
		707.5 (23095)	24.84	24.02	
		699.7 (23017)	24.62	23.78	
	1RB-Middle (3)	715.3 (23173)	25.20	24.39	
		707.5 (23095)	24.97	24.14	
		699.7 (23017)	24.72	23.92	
	1RB-Low (0)	715.3 (23173)	25.04	24.20	
		707.5 (23095)	24.81	23.96	
		699.7 (23017)	24.53	23.73	
	3RB-High (3)	715.3 (23173)	25.23	24.14	
		707.5 (23095)	24.93	23.91	
		699.7 (23017)	24.69	23.60	
	3RB-Middle (1)	715.3 (23173)	25.23	24.15	
		707.5 (23095)	24.96	23.88	
		699.7 (23017)	24.74	23.74	
	3RB-Low (0)	715.3 (23173)	25.19	24.13	
		707.5 (23095)	24.91	23.82	
		699.7 (23017)	24.66	23.58	
	6RB (0)	715.3 (23173)	24.23	23.24	
		707.5 (23095)	23.99	23.00	
		699.7 (23017)	23.73	22.78	
	3MHz	1RB-High (14)	714.5 (23165)	25.12	24.28
			707.5 (23095)	24.91	24.11
			700.5 (23025)	24.65	23.84
1RB-Middle (7)		714.5 (23165)	25.26	24.42	
		707.5 (23095)	25.03	24.25	
		700.5 (23025)	24.81	24.02	
1RB-Low (0)		714.5 (23165)	25.04	24.22	
		707.5 (23095)	24.83	24.05	
		700.5 (23025)	24.62	23.76	
8RB-High (7)		714.5 (23165)	24.17	23.19	
		707.5 (23095)	23.95	22.99	
		700.5 (23025)	23.66	22.72	
8RB-Middle (4)		714.5 (23165)	24.18	23.19	
		707.5 (23095)	23.94	22.99	
		700.5 (23025)	23.72	22.78	
8RB-Low (0)		714.5 (23165)	24.13	23.16	
		707.5 (23095)	23.88	22.95	
		700.5 (23025)	23.67	22.69	
15RB (0)		714.5 (23165)	24.16	23.15	
		707.5 (23095)	23.93	22.91	
		700.5 (23025)	23.73	22.70	

5MHz	1RB-High (24)	713.5 (23155)	25.01	24.15	
		707.5 (23095)	24.83	24.08	
		701.5 (23035)	24.63	23.82	
	1RB-Middle (12)	713.5 (23155)	25.19	24.35	
		707.5 (23095)	25.03	24.23	
		701.5 (23035)	24.81	24.00	
	1RB-Low (0)	713.5 (23155)	24.96	24.08	
		707.5 (23095)	24.71	23.91	
		701.5 (23035)	24.54	23.72	
	12RB-High (13)	713.5 (23155)	24.12	23.12	
		707.5 (23095)	23.97	22.99	
		701.5 (23035)	23.72	22.66	
	12RB-Middle (6)	713.5 (23155)	24.17	23.12	
		707.5 (23095)	23.96	22.91	
		701.5 (23035)	23.76	22.75	
	12RB-Low (0)	713.5 (23155)	24.13	23.09	
		707.5 (23095)	23.89	22.84	
		701.5 (23035)	23.71	22.69	
	25RB (0)	713.5 (23155)	24.14	23.15	
		707.5 (23095)	23.93	22.93	
		701.5 (23035)	23.73	22.69	
	10MHz	1RB-High (49)	711 (23130)	24.80	23.98
			707.5 (23095)	24.72	23.94
			704 (23060)	24.61	23.91
1RB-Middle (24)		711 (23130)	24.88	23.96	
		707.5 (23095)	24.73	23.90	
		704 (23060)	24.64	23.74	
1RB-Low (0)		711 (23130)	24.58	23.70	
		707.5 (23095)	24.52	23.66	
		704 (23060)	24.38	23.64	
25RB-High (25)		711 (23130)	23.93	22.86	
		707.5 (23095)	23.86	22.84	
		704 (23060)	23.71	22.67	
25RB-Middle (12)		711 (23130)	23.90	22.86	
		707.5 (23095)	23.77	22.75	
		704 (23060)	23.66	22.62	
25RB-Low (0)		711 (23130)	23.78	22.77	
		707.5 (23095)	23.73	22.69	
		704 (23060)	23.68	22.65	
50RB (0)		711 (23130)	23.83	22.83	
		707.5 (23095)	23.79	22.78	
		704 (23060)	23.70	22.69	

LTE B13 Power Level A1/B1/C1				
BANDWIDTH	Number of RBs	Frequency	QPSK	16QAM
5MHz	1RB-High (24)	784.5 (23255)	24.41	23.66
		782 (23230)	24.40	23.59
		779.5 (23205)	24.44	23.58
	1RB-Middle (12)	784.5 (23255)	24.77	23.99
		782 (23230)	24.74	23.80
		779.5 (23205)	24.70	23.88
	1RB-Low (0)	784.5 (23255)	24.47	23.58
		782 (23230)	24.45	23.57
		779.5 (23205)	24.45	23.54
	12RB-High (13)	784.5 (23255)	23.54	22.53
		782 (23230)	23.57	22.55
		779.5 (23205)	23.61	22.58
	12RB-Middle (6)	784.5 (23255)	23.68	22.63
		782 (23230)	23.65	22.61
		779.5 (23205)	23.64	22.60
	12RB-Low (0)	784.5 (23255)	23.61	22.60
		782 (23230)	23.60	22.56
		779.5 (23205)	23.50	22.44
	25RB (0)	784.5 (23255)	23.61	22.62
		782 (23230)	23.61	22.57
		779.5 (23205)	23.60	22.57
10MHz	1RB-High (49)	782 (23230)	24.49	23.75
	1RB-Middle (24)	782 (23230)	24.79	23.88
	1RB-Low (0)	782 (23230)	24.60	23.79
	25RB-High (25)	782 (23230)	23.61	22.57
	25RB-Middle (12)	782 (23230)	23.67	22.64
	25RB-Low (0)	782 (23230)	23.58	22.53
	50RB (0)	782 (23230)	23.61	22.56

LTE B66-Power Level A1				
BANDWIDTH	Number of RBs	Frequency	QPSK	16QAM
1.4MHz	1RB-High (5)	1779.3 (132665)	24.75	23.74
		1745 (132322)	24.25	23.60
		1710.7 (131979)	24.30	23.53
	1RB-Middle (3)	1779.3 (132665)	24.89	23.89
		1745 (132322)	24.33	23.61
		1710.7 (131979)	24.46	23.61
	1RB-Low (0)	1779.3 (132665)	24.75	23.86
		1745 (132322)	24.26	23.55
		1710.7 (131979)	24.30	23.50
	3RB-High (3)	1779.3 (132665)	24.82	23.72
		1745 (132322)	24.36	23.28
		1710.7 (131979)	24.42	23.36
	3RB-Middle (1)	1779.3 (132665)	24.95	23.73
		1745 (132322)	24.41	23.44
		1710.7 (131979)	24.47	23.51
	3RB-Low (0)	1779.3 (132665)	24.85	23.73
		1745 (132322)	24.38	23.34
		1710.7 (131979)	24.46	23.36
	6RB (0)	1779.3 (132665)	23.88	22.94
		1745 (132322)	23.43	22.45
		1710.7 (131979)	23.48	22.56
3MHz	1RB-High (14)	1778.5 (132657)	24.80	23.98
		1745 (132322)	24.36	23.55
		1711.5 (131987)	24.42	23.58
	1RB-Middle (7)	1778.5 (132657)	24.93	24.05
		1745 (132322)	24.55	23.77
		1711.5 (131987)	24.56	23.87
	1RB-Low (0)	1778.5 (132657)	24.79	23.90
		1745 (132322)	24.35	23.57
		1711.5 (131987)	24.40	23.72
	8RB-High (7)	1778.5 (132657)	23.88	22.85
		1745 (132322)	23.44	22.52
		1711.5 (131987)	23.47	22.52
	8RB-Middle (4)	1778.5 (132657)	23.91	22.92
		1745 (132322)	23.47	22.51
		1711.5 (131987)	23.49	22.53
	8RB-Low (0)	1778.5 (132657)	23.86	22.86
		1745 (132322)	23.38	22.41
		1711.5 (131987)	23.47	22.51
15RB (0)	1778.5 (132657)	23.91	22.87	
	1745 (132322)	23.39	22.38	
	1711.5 (131987)	23.47	22.47	

5MHz	1RB-High (24)	1777.5 (132647)	24.72	23.88
		1745 (132322)	24.25	23.54
		1712.5 (131997)	24.28	23.56
	1RB-Middle (12)	1777.5 (132647)	24.99	24.02
		1745 (132322)	24.52	23.84
		1712.5 (131997)	24.57	23.80
	1RB-Low (0)	1777.5 (132647)	24.68	23.78
		1745 (132322)	24.24	23.50
		1712.5 (131997)	24.32	23.57
	12RB-High (13)	1777.5 (132647)	23.86	22.80
		1745 (132322)	23.44	22.39
		1712.5 (131997)	23.51	22.46
	12RB-Middle (6)	1777.5 (132647)	23.93	22.84
		1745 (132322)	23.44	22.41
		1712.5 (131997)	23.53	22.47
	12RB-Low (0)	1777.5 (132647)	23.88	22.80
		1745 (132322)	23.39	22.34
		1712.5 (131997)	23.45	22.45
25RB (0)	1777.5 (132647)	23.88	22.87	
	1745 (132322)	23.41	22.37	
	1712.5 (131997)	23.49	22.47	
10MHz	1RB-High (49)	1775 (132622)	24.81	23.86
		1745 (132322)	24.36	23.66
		1715 (132022)	24.36	23.64
	1RB-Middle (24)	1775 (132622)	24.85	24.09
		1745 (132322)	24.49	23.74
		1715 (132022)	24.54	23.85
	1RB-Low (0)	1775 (132622)	24.71	23.86
		1745 (132322)	24.33	23.62
		1715 (132022)	24.42	23.73
	25RB-High (25)	1775 (132622)	23.95	22.89
		1745 (132322)	23.52	22.47
		1715 (132022)	23.57	22.55
	25RB-Middle (12)	1775 (132622)	23.94	22.90
		1745 (132322)	23.48	22.49
		1715 (132022)	23.57	22.51
	25RB-Low (0)	1775 (132622)	23.93	22.91
		1745 (132322)	23.45	22.45
		1715 (132022)	23.50	22.50
50RB (0)	1775 (132622)	23.96	22.92	
	1745 (132322)	23.48	22.46	
	1715 (132022)	23.57	22.53	

15MHz	1RB-High (74)	1772.5 (132597)	24.73	23.80
		1745 (132322)	24.24	23.44
		1717.5 (132047)	24.22	23.48
	1RB-Middle (37)	1772.5 (132597)	24.76	24.00
		1745 (132322)	24.42	23.67
		1717.5 (132047)	24.42	23.68
	1RB-Low (0)	1772.5 (132597)	24.54	23.82
		1745 (132322)	24.24	23.46
		1717.5 (132047)	24.33	23.54
	36RB-High (38)	1772.5 (132597)	23.93	22.86
		1745 (132322)	23.48	22.42
		1717.5 (132047)	23.51	22.46
	36RB-Middle (19)	1772.5 (132597)	23.92	22.82
		1745 (132322)	23.47	22.45
		1717.5 (132047)	23.53	22.44
	36RB-Low (0)	1772.5 (132597)	23.83	22.80
		1745 (132322)	23.44	22.40
		1717.5 (132047)	23.51	22.43
75RB (0)	1772.5 (132597)	23.89	22.85	
	1745 (132322)	23.46	22.41	
	1717.5 (132047)	23.49	22.48	
20MHz	1RB-High (99)	1770 (132572)	24.50	23.71
		1745 (132322)	24.11	23.36
		1720 (132072)	24.06	23.30
	1RB-Middle (50)	1770 (132572)	24.81	23.86
		1745 (132322)	24.46	23.76
		1720 (132072)	24.46	23.78
	1RB-Low (0)	1770 (132572)	24.19	23.51
		1745 (132322)	24.05	23.36
		1720 (132072)	24.14	23.41
	50RB-High (50)	1770 (132572)	23.87	22.83
		1745 (132322)	23.50	22.44
		1720 (132072)	23.47	22.45
	50RB-Middle (25)	1770 (132572)	23.85	22.82
		1745 (132322)	23.48	22.45
		1720 (132072)	23.49	22.46
	50RB-Low (0)	1770 (132572)	23.78	22.71
		1745 (132322)	23.39	22.38
		1720 (132072)	23.42	22.40
100RB (0)	1770 (132572)	23.79	22.75	
	1745 (132322)	23.44	22.39	
	1720 (132072)	23.43	22.40	

LTE B66-Power Level B1				
BANDWIDTH	Number of RBs	Frequency	QPSK	16QAM
1.4MHz	1RB-High (5)	1779.3 (132665)	22.78	22.98
		1745 (132322)	22.35	22.51
		1710.7 (131979)	22.41	22.71
	1RB-Middle (3)	1779.3 (132665)	22.94	23.16
		1745 (132322)	22.48	22.66
		1710.7 (131979)	22.52	22.81
	1RB-Low (0)	1779.3 (132665)	22.80	22.92
		1745 (132322)	22.34	22.53
		1710.7 (131979)	22.40	22.68
	3RB-High (3)	1779.3 (132665)	22.90	22.83
		1745 (132322)	22.45	22.46
		1710.7 (131979)	22.48	22.43
	3RB-Middle (1)	1779.3 (132665)	22.93	22.85
		1745 (132322)	22.51	22.49
		1710.7 (131979)	22.57	22.56
	3RB-Low (0)	1779.3 (132665)	22.92	22.87
		1745 (132322)	22.41	22.46
		1710.7 (131979)	22.50	22.47
	6RB (0)	1779.3 (132665)	22.93	22.96
		1745 (132322)	22.45	22.48
		1710.7 (131979)	22.49	22.56
3MHz	1RB-High (14)	1778.5 (132657)	22.89	22.95
		1745 (132322)	22.41	22.61
		1711.5 (131987)	22.46	22.67
	1RB-Middle (7)	1778.5 (132657)	22.99	23.17
		1745 (132322)	22.59	22.81
		1711.5 (131987)	22.62	22.90
	1RB-Low (0)	1778.5 (132657)	22.85	23.12
		1745 (132322)	22.38	22.69
		1711.5 (131987)	22.46	22.73
	8RB-High (7)	1778.5 (132657)	22.91	22.92
		1745 (132322)	22.43	22.51
		1711.5 (131987)	22.49	22.51
	8RB-Middle (4)	1778.5 (132657)	22.93	22.96
		1745 (132322)	22.48	22.47
		1711.5 (131987)	22.51	22.56
	8RB-Low (0)	1778.5 (132657)	22.89	22.87
		1745 (132322)	22.40	22.44
		1711.5 (131987)	22.49	22.53
	15RB (0)	1778.5 (132657)	22.92	22.87
		1745 (132322)	22.43	22.41
		1711.5 (131987)	22.48	22.47

5MHz	1RB-High (24)	1777.5 (132647)	22.74	22.91
		1745 (132322)	22.30	22.59
		1712.5 (131997)	22.34	22.54
	1RB-Middle (12)	1777.5 (132647)	22.99	23.20
		1745 (132322)	22.54	22.92
		1712.5 (131997)	22.65	22.88
	1RB-Low (0)	1777.5 (132647)	22.72	22.96
		1745 (132322)	22.29	22.60
		1712.5 (131997)	22.36	22.56
	12RB-High (13)	1777.5 (132647)	22.86	22.81
		1745 (132322)	22.42	22.37
		1712.5 (131997)	22.50	22.50
	12RB-Middle (6)	1777.5 (132647)	22.93	22.84
		1745 (132322)	22.44	22.43
		1712.5 (131997)	22.53	22.51
	12RB-Low (0)	1777.5 (132647)	22.89	22.82
		1745 (132322)	22.38	22.36
		1712.5 (131997)	22.46	22.44
	25RB (0)	1777.5 (132647)	22.87	22.89
		1745 (132322)	22.40	22.40
		1712.5 (131997)	22.50	22.51
10MHz	1RB-High (49)	1775 (132622)	22.85	23.06
		1745 (132322)	22.41	22.61
		1715 (132022)	22.40	22.61
	1RB-Middle (24)	1775 (132622)	22.98	23.13
		1745 (132322)	22.54	22.77
		1715 (132022)	22.58	22.88
	1RB-Low (0)	1775 (132622)	22.75	22.89
		1745 (132322)	22.36	22.56
		1715 (132022)	22.45	22.79
	25RB-High (25)	1775 (132622)	22.89	22.90
		1745 (132322)	22.46	22.48
		1715 (132022)	22.50	22.56
	25RB-Middle (12)	1775 (132622)	22.93	22.92
		1745 (132322)	22.48	22.46
		1715 (132022)	22.53	22.54
	25RB-Low (0)	1775 (132622)	22.91	22.89
		1745 (132322)	22.43	22.45
		1715 (132022)	22.52	22.49
50RB (0)	1775 (132622)	22.91	22.91	
	1745 (132322)	22.44	22.46	
	1715 (132022)	22.51	22.52	

15MHz	1RB-High (74)	1772.5 (132597)	22.78	23.01
		1745 (132322)	22.31	22.48
		1717.5 (132047)	22.29	22.56
	1RB-Middle (37)	1772.5 (132597)	22.81	23.03
		1745 (132322)	22.46	22.73
		1717.5 (132047)	22.45	22.77
	1RB-Low (0)	1772.5 (132597)	22.58	22.84
		1745 (132322)	22.25	22.48
		1717.5 (132047)	22.39	22.69
	36RB-High (38)	1772.5 (132597)	22.90	22.85
		1745 (132322)	22.48	22.43
		1717.5 (132047)	22.47	22.47
	36RB-Middle (19)	1772.5 (132597)	22.89	22.82
		1745 (132322)	22.48	22.44
		1717.5 (132047)	22.50	22.48
	36RB-Low (0)	1772.5 (132597)	22.84	22.79
		1745 (132322)	22.43	22.39
		1717.5 (132047)	22.47	22.45
75RB (0)	1772.5 (132597)	22.87	22.84	
	1745 (132322)	22.45	22.42	
	1717.5 (132047)	22.49	22.48	
20MHz	1RB-High (99)	1770 (132572)	22.61	22.79
		1745 (132322)	22.17	22.53
		1720 (132072)	22.12	22.39
	1RB-Middle (50)	1770 (132572)	22.88	22.95
		1745 (132322)	22.65	22.71
		1720 (132072)	22.66	22.82
	1RB-Low (0)	1770 (132572)	22.32	22.50
		1745 (132322)	22.16	22.33
		1720 (132072)	22.22	22.40
	50RB-High (50)	1770 (132572)	22.91	22.87
		1745 (132322)	22.69	22.51
		1720 (132072)	22.65	22.48
	50RB-Middle (25)	1770 (132572)	22.87	22.85
		1745 (132322)	22.48	22.48
		1720 (132072)	22.51	22.52
	50RB-Low (0)	1770 (132572)	22.80	22.78
		1745 (132322)	22.44	22.42
		1720 (132072)	22.46	22.45
100RB (0)	1770 (132572)	22.82	22.77	
	1745 (132322)	22.47	22.45	
	1720 (132072)	22.46	22.44	

LTE B66-Power Level C1				
BANDWIDTH	Number of RBs	Frequency	QPSK	16QAM
1.4MHz	1RB-High (5)	1779.3 (132665)	21.82	22.07
		1745 (132322)	21.32	21.59
		1710.7 (131979)	21.39	21.73
	1RB-Middle (3)	1779.3 (132665)	21.96	22.23
		1745 (132322)	21.46	21.72
		1710.7 (131979)	21.50	21.79
	1RB-Low (0)	1779.3 (132665)	21.80	22.09
		1745 (132322)	21.35	21.70
		1710.7 (131979)	21.40	21.58
	3RB-High (3)	1779.3 (132665)	21.91	21.79
		1745 (132322)	21.46	21.44
		1710.7 (131979)	21.51	21.51
	3RB-Middle (1)	1779.3 (132665)	21.95	21.90
		1745 (132322)	21.51	21.44
		1710.7 (131979)	21.55	21.54
	3RB-Low (0)	1779.3 (132665)	21.89	21.82
		1745 (132322)	21.41	21.35
		1710.7 (131979)	21.47	21.51
	6RB (0)	1779.3 (132665)	21.92	21.94
		1745 (132322)	21.44	21.51
		1710.7 (131979)	21.49	21.54
3MHz	1RB-High (14)	1778.5 (132657)	21.89	22.05
		1745 (132322)	21.42	21.73
		1711.5 (131987)	21.45	21.66
	1RB-Middle (7)	1778.5 (132657)	21.99	22.33
		1745 (132322)	21.61	21.86
		1711.5 (131987)	21.55	21.80
	1RB-Low (0)	1778.5 (132657)	21.84	22.09
		1745 (132322)	21.39	21.68
		1711.5 (131987)	21.47	21.77
	8RB-High (7)	1778.5 (132657)	21.89	21.96
		1745 (132322)	21.41	21.50
		1711.5 (131987)	21.47	21.53
	8RB-Middle (4)	1778.5 (132657)	21.95	22.00
		1745 (132322)	21.46	21.52
		1711.5 (131987)	21.52	21.57
	8RB-Low (0)	1778.5 (132657)	21.87	21.92
		1745 (132322)	21.41	21.47
		1711.5 (131987)	21.47	21.57
15RB (0)	1778.5 (132657)	21.93	21.90	
	1745 (132322)	21.40	21.44	
	1711.5 (131987)	21.47	21.50	

5MHz	1RB-High (24)	1777.5 (132647)	21.78	22.06
		1745 (132322)	21.30	21.66
		1712.5 (131997)	21.32	21.67
	1RB-Middle (12)	1777.5 (132647)	22.05	22.20
		1745 (132322)	21.65	21.86
		1712.5 (131997)	21.60	21.89
	1RB-Low (0)	1777.5 (132647)	21.73	21.95
		1745 (132322)	21.30	21.62
		1712.5 (131997)	21.36	21.63
	12RB-High (13)	1777.5 (132647)	21.86	21.84
		1745 (132322)	21.41	21.42
		1712.5 (131997)	21.48	21.49
	12RB-Middle (6)	1777.5 (132647)	21.93	21.90
		1745 (132322)	21.44	21.45
		1712.5 (131997)	21.54	21.54
	12RB-Low (0)	1777.5 (132647)	21.89	21.83
		1745 (132322)	21.38	21.41
		1712.5 (131997)	21.44	21.47
25RB (0)	1777.5 (132647)	21.89	21.87	
	1745 (132322)	21.41	21.41	
	1712.5 (131997)	21.48	21.51	
10MHz	1RB-High (49)	1775 (132622)	21.61	22.14
		1745 (132322)	21.36	21.62
		1715 (132022)	21.38	21.75
	1RB-Middle (24)	1775 (132622)	21.90	22.16
		1745 (132322)	21.55	21.92
		1715 (132022)	21.58	21.83
	1RB-Low (0)	1775 (132622)	21.72	21.94
		1745 (132322)	21.36	21.73
		1715 (132022)	21.44	21.71
	25RB-High (25)	1775 (132622)	21.91	21.88
		1745 (132322)	21.47	21.49
		1715 (132022)	21.50	21.52
	25RB-Middle (12)	1775 (132622)	21.95	21.93
		1745 (132322)	21.48	21.48
		1715 (132022)	21.55	21.54
	25RB-Low (0)	1775 (132622)	21.94	21.89
		1745 (132322)	21.43	21.47
		1715 (132022)	21.49	21.52
50RB (0)	1775 (132622)	21.91	21.91	
	1745 (132322)	21.45	21.45	
	1715 (132022)	21.50	21.55	

15MHz	1RB-High (74)	1772.5 (132597)	21.79	21.89
		1745 (132322)	21.31	21.58
		1717.5 (132047)	21.31	21.36
	1RB-Middle (37)	1772.5 (132597)	21.83	22.08
		1745 (132322)	21.46	21.73
		1717.5 (132047)	21.35	21.60
	1RB-Low (0)	1772.5 (132597)	21.61	21.95
		1745 (132322)	21.32	21.55
		1717.5 (132047)	21.41	21.28
	36RB-High (38)	1772.5 (132597)	21.92	21.88
		1745 (132322)	21.49	21.31
		1717.5 (132047)	21.43	21.03
	36RB-Middle (19)	1772.5 (132597)	21.92	21.86
		1745 (132322)	21.45	21.43
		1717.5 (132047)	21.32	21.25
	36RB-Low (0)	1772.5 (132597)	21.87	21.79
		1745 (132322)	21.35	21.27
		1717.5 (132047)	21.27	21.03
75RB (0)	1772.5 (132597)	21.86	21.87	
	1745 (132322)	21.41	21.40	
	1717.5 (132047)	21.50	21.08	
20MHz	1RB-High (99)	1770 (132572)	21.60	21.80
		1745 (132322)	21.18	21.49
		1720 (132072)	21.14	21.43
	1RB-Middle (50)	1770 (132572)	21.84	21.97
		1745 (132322)	21.56	21.88
		1720 (132072)	21.60	21.85
	1RB-Low (0)	1770 (132572)	21.33	21.56
		1745 (132322)	21.11	21.49
		1720 (132072)	21.22	21.51
	50RB-High (50)	1770 (132572)	21.88	21.85
		1745 (132322)	21.65	21.48
		1720 (132072)	21.58	21.46
	50RB-Middle (25)	1770 (132572)	21.87	21.87
		1745 (132322)	21.47	21.48
		1720 (132072)	21.51	21.50
	50RB-Low (0)	1770 (132572)	21.79	21.79
		1745 (132322)	21.42	21.43
		1720 (132072)	21.47	21.46
100RB (0)	1770 (132572)	21.82	21.82	
	1745 (132322)	21.48	21.45	
	1720 (132072)	21.46	21.44	

11.4 Wi-Fi and BT Measurement result

The maximum output power of BT antenna is 10.18dBm.

The maximum tune up of BT antenna is 11.2dBm.

The average conducted power for Wi-Fi 2.4G is as following-Normal power (WIFI only):

802.11b	
Channel\data rate	5.5Mbps
11(2462MHz)	18.81
6(2437(MHz))	18.87
1(2412MHz)	18.71
Tune up	19.00
802.11g	
Channel\data rate	6Mbps
11(2462MHz)	17.44
6(2437(MHz))	17.69
1(2412MHz)	17.41
Tune up	18.00
802.11n-20MHz	
Channel\data rate	MCS0
11(2462MHz)	16.48
6(2437(MHz))	16.66
1(2412MHz)	16.41
Tune up	17.00
802.11n-40MHz	
Channel\data rate	MCS0
9(2452MHz)	15.79
6(2437MHz)	15.85
3(2422MHz)	15.82
Tune up	16.00

The average conducted power for Wi-Fi 2.4G is as following-Low power (WIFI+Cellular):

802.11b	
Channel\data rate	5.5Mbps
11(2462MHz)	15.89
6(2437(MHz)	15.90
1(2412MHz)	15.63
Tune up	16.00
802.11g	
Channel\data rate	6Mbps
11(2462MHz)	15.65
6(2437(MHz)	15.62
1(2412MHz)	15.55
Tune up	16.00
802.11n-20MHz	
Channel\data rate	MCS0
11(2462MHz)	15.53
6(2437(MHz)	15.49
1(2412MHz)	15.45
Tune up	16.00
802.11n-40MHz	
Channel\data rate	MCS0
9(2452MHz)	15.79
6(2437MHz)	15.85
3(2422MHz)	15.82
Tune up	16.00

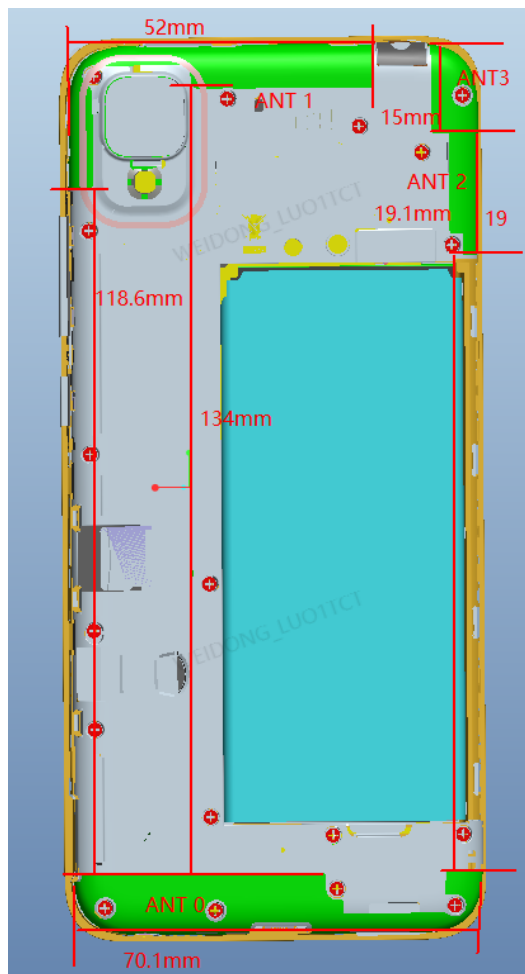
12 Simultaneous TX SAR Considerations

12.1 Introduction

The following procedures adopted from “FCC SAR Considerations for Cell Phones with Multiple Transmitters” are applicable to handsets with built-in unlicensed transmitters such as 802.11 a/b/g and Bluetooth devices which may simultaneously transmit with the licensed transmitter.

For this device, the BT and Wi-Fi can transmit simultaneous with other transmitters.

12.2 Transmit Antenna Separation Distances



ANT 0	TX:GSM850/900/1800/1900,WCDMA B1/2/4,LTE B2/3/4/7/66
	PRX:GSM900/1800/1900,WCDMA B1/2/4,LTE B2/3/4/7/66
	DRX: :GSM850,WCDMA B5,LTE B5/12/13
ANT 1	TX: WCDMA B5/8,LTE B5/12/13
	PRX:GSM850, WCDMA B5/8,LTE B5/12/13
	DRX: LTE B7
ANT 2	DRX:GSM1900, WCDMA 2/4,LTE B2/3/4/66
ANT 3	GPS & 2.4 Wifi

Picture 12.1 Antenna Locations

12.3 SAR Measurement Positions

According to the KDB941225 D06 Hot Spot SAR, the edges with less than 2.5 cm distance to the antennas need to be tested for SAR.

SAR measurement positions						
Mode	Front	Rear	Left	Right	Top	Bottom
ANT0	Yes	Yes	Yes	Yes	No	Yes
ANT1	Yes	Yes	Yes	Yes	Yes	No
WiFi ANT3	Yes	Yes	Yes	No	Yes	No

12.4 Standalone SAR Test Exclusion Considerations

Standalone 1-g head or body SAR evaluation by measurement or numerical simulation is not required when the corresponding SAR Exclusion Threshold condition, listed below, is satisfied. The 1-g SAR test exclusion threshold for 100 MHz to 6 GHz at test separation distances ≤ 50 mm are determined by:

$[(\text{max. power of channel, including tune-up tolerance, mW}) / (\text{min. test separation distance, mm})] \cdot [\sqrt{f(\text{GHz})}] \leq 3.0$ for 1-g SAR, where

- $f(\text{GHz})$ is the RF channel transmit frequency in GHz
- Power and distance are rounded to the nearest mW and mm before calculation
- The result is rounded to one decimal place for comparison

Table 12.1: Standalone SAR test exclusion considerations

Band/Mode	F(GHz)	Position	SAR test exclusion threshold(mW)	RF output power		SAR test exclusion
				dBm	mW	
Bluetooth	2.441	Head	9.60	11.2	13.18	No
		Body	19.20	11.2	13.18	Yes
2.4GHz WLAN	2.45	Head	9.58	19	79.43	No
		Body	19.17	19	79.43	No

13 Evaluation of Simultaneous

Table 13.1: The sum of SAR values for Main antenna + WiFi-2.4G (1g)

	Position	Main antenna	WiFi-2.4G	Sum
Highest SAR value for Head	Left head, Cheek (LTE B13)	0.79	0.07	0.86
Highest SAR value for Body	Rear 10mm (LTE B7)	1.17	0.11	1.28

Table 13.2: The sum of SAR values for main antenna and BT (1g)

	Position	Main antenna	BT	Sum
Maximum reported SAR value for Head	Left head, Cheek (LTE B13)	0.79	<0.01	0.79
Maximum reported SAR value for Body	Bottom 10mm (LTE B66)	1.19	<0.01	1.19

Conclusion:

According to the above tables, the sum of reported SAR values is <1.6W/kg. So the simultaneous transmission SAR with volume scans is not required.

Table 13.3: The sum of reported SAR values for main antenna and WiFi2.4G extremity SAR

	Position	Band	Main antenna	WiFi-10mm	Sum (10g)
Highest reported SAR value for Phablet	Bottom 0mm	W1700	2.76	/	2.76
	Bottom 0mm	W1900	2.85	/	2.85
	Bottom 0mm	LTE B2	2.79	/	2.79
	Rear 0mm	LTE B66	2.20	0.35	2.55
	Bottom 0mm	LTE B66	2.88	/	2.88

14 SAR Test Result

It is determined by user manual for the distance between the EUT and the phantom bottom. The distance is 10/15 mm and just applied to the condition of body worn accessory.

It is performed for all SAR measurements with area scan based 1-g SAR estimation (Fast SAR). A zoom scan measurement is added when the estimated 1-g SAR is the highest measured SAR in each exposure configuration, wireless mode and frequency band combination or more than 1.2W/kg.

The calculated SAR is obtained by the following formula:

$$\text{Reported SAR} = \text{Measured SAR} \times 10^{(P_{\text{Target}} - P_{\text{Measured}})/10}$$

Where P_{Target} is the power of manufacturing upper limit;

P_{Measured} is the measured power in chapter 11.

Table 14.1: Duty Cycle

Mode	Duty Cycle
Speech for GSM 850/1900	1:8.3
GPRS&EGPRS for GSM 850/1900	1:4
WCDMA<E FDD	1:1

14.1 SAR results for 2G/3G/4G

Table 14.1-1: SAR Values (GSM 850 MHz Band - Head)

Frequency		Side	Test Position	Figure No.	Conducted Power (dBm)	Max. tune-up Power (dBm)	Measured SAR(10g) (W/kg)	Reported SAR(10g) (W/kg)	Measured SAR(1g) (W/kg)	Reported SAR(1g) (W/kg)	Power Drift (dB)
Ch.	MHz										
Ambient Temperature: 22.9°C Liquid Temperature: 22.5°C											
251	848.8	Left	Cheek	Fig.1	31.57	32.8	0.134	0.18	0.167	0.22	-0.16
190	836.6	Left	Cheek	/	31.52	32.8	0.106	0.14	0.135	0.18	0.18
128	824.2	Left	Cheek	/	31.57	32.8	0.087	0.12	0.107	0.14	0.12
190	836.6	Left	Tilt	/	31.52	32.8	0.062	0.08	0.074	0.10	0.15
190	836.6	Right	Cheek	/	31.52	32.8	0.103	0.14	0.126	0.17	-0.11
190	836.6	Right	Tilt	/	31.52	32.8	0.06	0.08	0.073	0.10	0.09

Table 14.1-2: SAR Values (GSM 850 MHz Band - Body)

Frequency		Mode (number of timeslots)	Test Position	Figure No.	Conducted Power (dBm)	Max. tune-up Power (dBm)	Measured SAR(10g) (W/kg)	Reported SAR(10g) (W/kg)	Measured SAR(1g) (W/kg)	Reported SAR(1g) (W/kg)	Power Drift (dB)
Ch.	MHz										
Ambient Temperature: 22.9°C Liquid Temperature: 22.5°C											
190	836.6	GPRS (2)	Front	/	28.94	30	0.081	0.10	0.108	0.14	0.16
251	848.8	GPRS (2)	Rear	Fig.2	28.88	30	0.172	0.22	0.223	0.29	-0.07
190	836.6	GPRS (2)	Rear	/	28.94	30	0.141	0.18	0.191	0.24	-0.14
128	824.2	GPRS (2)	Rear	/	29.08	30	0.143	0.18	0.188	0.23	0.01
190	836.6	GPRS (2)	Left	/	28.94	30	0.074	0.09	0.104	0.13	0.06
190	836.6	GPRS (2)	Right	/	28.94	30	0.067	0.09	0.094	0.12	0.08
190	836.6	GPRS (2)	Bottom	/	28.94	30	0.102	0.13	0.134	0.17	-0.11
251	848.8	EGPRS (2)	Rear	/	28.87	30	0.161	0.21	0.206	0.27	0.05

Note: The distance between the EUT and the phantom bottom is 10mm.

Table 14.1-3: SAR Values (GSM 1900 MHz Band - Head)

Frequency		Side	Test Position	Figure No.	Conducted Power (dBm)	Max. tune-up Power (dBm)	Measured SAR(10g) (W/kg)	Reported SAR(10g) (W/kg)	Measured SAR(1g) (W/kg)	Reported SAR(1g) (W/kg)	Power Drift (dB)
Ch.	MHz										
Ambient Temperature: 22.9°C Liquid Temperature: 22.5°C											
661	1880	Left	Cheek	/	29.63	30.6	0.075	0.09	0.121	0.15	0.03
661	1880	Left	Tilt	/	29.63	30.6	0.07	0.09	0.112	0.14	0.07
810	1909.8	Right	Cheek	Fig.3	30.15	30.6	0.134	0.15	0.211	0.23	-0.10
661	1880	Right	Cheek	/	29.63	30.6	0.01	0.01	0.157	0.20	0.01
512	1850.2	Right	Cheek	/	29.25	30.6	0.08	0.11	0.125	0.17	-0.11
661	1880	Right	Tilt	/	29.63	30.6	0.079	0.10	0.132	0.17	0.06

Table 14.1-4: SAR Values (GSM 1900 MHz Band – Body)

Frequency		Mode (number of timeslots)	Test Position	Figure No.	Conducte d Power (dBm)	Max. tune-up Power (dBm)	Measured SAR(10g) (W/kg)	Reported SAR(10g)(W/kg)	Measured SAR(1g) (W/kg)	Reported SAR(1g) (W/kg)	Power Drift (dB)
Ch.	MHz										
		Ambient Temperature: 22.9 °C Liquid Temperature: 22.5°C									
661	1880	GPRS (2)	Front	/	26.84	28	0.234	0.31	0.377	0.49	0.05
661	1880	GPRS (2)	Rear	/	26.84	28	0.278	0.36	0.464	0.61	0.01
661	1880	GPRS (2)	Left	/	26.84	28	0.054	0.07	0.088	0.11	0.16
661	1880	GPRS (2)	Right	/	26.84	28	0.12	0.16	0.194	0.25	-0.15
810	1909.8	GPRS (2)	Bottom	Fig.4	27.56	28	0.457	0.51	0.863	0.96	0.05
661	1880	GPRS (2)	Bottom	/	26.84	28	0.377	0.49	0.666	0.87	0.16
512	1850.2	GPRS (2)	Bottom	/	26.75	28	0.371	0.49	0.705	0.94	-0.17
810	1909.8	EGPRS (2)	Bottom	/	27.52	28	0.445	0.50	0.844	0.94	0.10

Note: The distance between the EUT and the phantom bottom is 10mm

Table 14.1-5: SAR Values (WCDMA 1900 MHz Band - Head)

Frequency		Side	Test Position	Figur e No.	Conducted Power (dBm)	Max. tune-up Power (dBm)	Measure d SAR(10g) (W/kg)	Reported SAR(10g) (W/kg)	Measure d SAR(1g) (W/kg)	Reporte d SAR(1g) (W/kg)	Power Drift (dB)
Ch.	MHz										
		Ambient Temperature: 22.9 °C Liquid Temperature: 22.5°C									
9400	1880	Left	Cheek	/	23.89	25	0.154	0.20	0.25	0.32	-0.08
9400	1880	Left	Tilt	/	23.89	25	0.136	0.18	0.214	0.28	-0.14
9538	1907.6	Right	Cheek	Fig.5	24.23	25	0.232	0.28	0.369	0.44	-0.06
9400	1880	Right	Cheek	/	23.89	25	0.205	0.26	0.324	0.42	-0.01
9262	1852.4	Right	Cheek	/	23.63	25	0.176	0.24	0.278	0.38	-0.06
9400	1880	Right	Tilt	/	23.89	25	0.147	0.19	0.245	0.32	0.09

Table 14.1-6: SAR Values (WCDMA 1900 MHz Band – Body Worn)

Frequency		Test Position	Figure No.	Conduct ed Power (dBm)	Max. tune-up Power (dBm)	Measured SAR(10g) (W/kg)	Reported SAR(10g) (W/kg)	Measured SAR(1g) (W/kg)	Reported SAR(1g) (W/kg)	Power Drift (dB)	
Ch.	MHz										
		Ambient Temperature: 22.9 °C Liquid Temperature: 22.5°C									
9400	1880	Front	/	21.87	23	0.135	0.18	0.225	0.29	-0.06	
9538	1907.6	Rear	Fig.6	21.95	23	0.175	0.22	0.3	0.38	0.11	
9400	1880	Rear	/	21.87	23	0.158	0.20	0.271	0.35	-0.07	
9262	1852.4	Rear	/	21.7	23	0.147	0.20	0.249	0.34	-0.15	

Note: The distance between the EUT and the phantom bottom is 15mm

Table 14.1-7: SAR Values (WCDMA 1900 MHz Band – Hotspot)

Ambient Temperature: 22.9 °C					Liquid Temperature: 22.5°C					
Frequency		Test Position	Figure No.	Conducted Power (dBm)	Max. tune-up Power (dBm)	Measured SAR(10g) (W/kg)	Reported SAR(10g) (W/kg)	Measured SAR(1g) (W/kg)	Reported SAR(1g) (W/kg)	Power Drift (dB)
Ch.	MHz									
9400	1880	Front	/	20.98	22	0.239	0.30	0.401	0.51	0.05
9400	1880	Rear	/	20.98	22	0.298	0.38	0.54	0.68	0.09
9400	1880	Left	/	20.98	22	0.07	0.09	0.12	0.15	0.09
9400	1880	Right	/	20.98	22	0.125	0.16	0.207	0.26	-0.18
9538	1907.6	Bottom	/	20.97	22	0.401	0.51	0.756	0.96	0.15
9400	1880	Bottom	/	20.98	22	0.412	0.52	0.779	0.99	0.13
9262	1852.4	Bottom	Fig.7	20.69	22	0.413	0.56	0.781	1.06	0.06

Note: The distance between the EUT and the phantom bottom is 10mm

Table 14.1-8: SAR Values (WCDMA 1700 MHz Band - Head)

Ambient Temperature: 22.9 °C					Liquid Temperature: 22.5°C						
Frequency		Side	Test Position	Figure No.	Conducted Power (dBm)	Max. tune-up Power (dBm)	Measured SAR(10g) (W/kg)	Reported SAR(10g) (W/kg)	Measured SAR(1g) (W/kg)	Reported SAR(1g) (W/kg)	Power Drift (dB)
Ch.	MHz										
1513	1752.6	Left	Cheek	Fig.8	23.28	24.50	0.13	0.17	0.203	0.27	-0.07
1412	1732.4	Left	Cheek	/	23.12	24.50	0.115	0.16	0.188	0.26	-0.03
1312	1712.4	Left	Cheek	/	23.21	24.50	0.102	0.14	0.165	0.22	0.10
1412	1732.4	Left	Tilt	/	23.12	24.50	0.057	0.08	0.086	0.12	0.15
1412	1732.4	Right	Cheek	/	23.12	24.50	0.088	0.12	0.135	0.19	0.14
1412	1732.4	Right	Tilt	/	23.12	24.50	0.065	0.09	0.105	0.14	0.05

Table 14.1-9: SAR Values (WCDMA 1700 MHz Band – Body Worn)

Ambient Temperature: 22.9 °C					Liquid Temperature: 22.5°C					
Frequency		Test Position	Figure No.	Conducted Power (dBm)	Max. tune-up Power (dBm)	Measured SAR(10g) (W/kg)	Reported SAR(10g) (W/kg)	Measured SAR(1g) (W/kg)	Reported SAR(1g) (W/kg)	Power Drift (dB)
Ch.	MHz									
1412	1732.4	Front	/	21.18	22.50	0.085	0.12	0.141	0.19	-0.16
1513	1752.6	Rear	/	21.30	22.50	0.158	0.21	0.269	0.35	0.02
1412	1732.4	Rear	/	21.18	22.50	0.161	0.22	0.276	0.37	-0.04
1312	1712.4	Rear	Fig.9	21.26	22.50	0.171	0.23	0.296	0.39	0.09

Note: The distance between the EUT and the phantom bottom is 15mm

Table 14.1-10: SAR Values (WCDMA 1700 MHz Band – Hotspot)

Ambient Temperature: 22.9 °C					Liquid Temperature: 22.5°C					
Frequency		Test Position	Figure No.	Conducted Power (dBm)	Max. tune-up Power (dBm)	Measured SAR(10g) (W/kg)	Reported SAR(10g) (W/kg)	Measured SAR(1g) (W/kg)	Reported SAR(1g) (W/kg)	Power Drift (dB)
Ch.	MHz									
1412	1732.4	Front	/	20.14	21.5	0.163	0.22	0.298	0.41	-0.18
1412	1732.4	Rear	/	20.14	21.5	0.322	0.44	0.61	0.83	0.02
1412	1732.4	Left	/	20.14	21.5	0.046	0.06	0.078	0.11	-0.01
1412	1732.4	Right	/	20.14	21.5	0.036	0.05	0.059	0.08	0.02
1513	1752.6	Bottom	/	20.42	21.5	0.4	0.51	0.752	0.96	-0.12
1412	1732.4	Bottom	/	20.14	21.5	0.397	0.54	0.747	1.02	0.07
1312	1712.4	Bottom	Fig.10	20.26	21.5	0.416	0.55	0.785	1.04	0.04

Note: The distance between the EUT and the phantom bottom is 10mm

Table 14.1-11: SAR Values (WCDMA 850 MHz Band - Head)

Ambient Temperature: 22.9 °C					Liquid Temperature: 22.5°C						
Frequency		Side	Test Position	Figure No.	Conducted Power (dBm)	Max. tune-up Power (dBm)	Measured SAR(10g) (W/kg)	Reported SAR(10g) (W/kg)	Measured SAR(1g) (W/kg)	Reported SAR(1g) (W/kg)	Power Drift (dB)
Ch.	MHz										
4233	846.6	Left	Cheek	Fig.11	23.90	24	0.425	0.43	0.583	0.60	-0.05
4183	836.6	Left	Cheek	/	23.75	24	0.439	0.47	0.561	0.59	0.08
4132	826.4	Left	Cheek	/	23.63	24	0.411	0.45	0.541	0.59	-0.09
4183	836.6	Left	Tilt	/	23.72	24	0.352	0.38	0.54	0.58	-0.07
4183	836.6	Right	Cheek	/	23.72	24	0.371	0.40	0.527	0.56	-0.18
4183	836.6	Right	Tilt	/	23.72	24	0.3	0.32	0.472	0.50	0.14

Table 14.1-12: SAR Values (WCDMA 850 MHz Band - Body)

Ambient Temperature: 22.9 °C					Liquid Temperature: 22.5°C					
Frequency		Test Position	Figure No.	Conducted Power (dBm)	Max. tune-up Power (dBm)	Measured SAR(10g) (W/kg)	Reported SAR(10g) (W/kg)	Measured SAR(1g) (W/kg)	Reported SAR(1g) (W/kg)	Power Drift (dB)
Ch.	MHz									
4183	836.6	Front	/	23.75	24	0.19	0.20	0.262	0.28	-0.07
4233	846.6	Rear	Fig.12	23.90	24	0.327	0.33	0.59	0.60	0.12
4183	836.6	Rear	/	23.75	24	0.302	0.32	0.541	0.57	-0.01
4132	826.4	Rear	/	23.63	24	0.279	0.30	0.496	0.54	0.17
4183	836.6	Left	/	23.75	24	0.152	0.16	0.225	0.24	-0.04
4183	836.6	Right	/	23.75	24	0.279	0.30	0.41	0.43	-0.08
4183	836.6	Top	/	23.75	24	0.185	0.20	0.348	0.37	0.18

Note: The distance between the EUT and the phantom bottom is 10mm.

Table 14.1-13: SAR Values (LTE Band2 - Head)

Frequency		Mode	Side	Test Position	Figure No.	Ambient Temperature: 22.9 °C		Liquid Temperature: 22.5°C		Measured SAR(1g) (W/kg)	Reported SAR(1g) (W/kg)	Power Drift (dB)
Ch.	MHz					Conducted Power (dBm)	Max. tune-up Power (dBm)	Measured SAR(10g) (W/kg)	Reported SAR(10g) (W/kg)			
19100	1900	1RB-Mid	Left	Cheek	/	24.69	25.5	0.181	0.22	0.288	0.35	0.02
19100	1900	1RB-Mid	Left	Tilt	/	24.69	25.5	0.123	0.15	0.188	0.23	0.05
19100	1900	1RB-Mid	Right	Cheek	Fig.13	24.69	25.5	0.212	0.26	0.325	0.39	0.04
19100	1900	1RB-Mid	Right	Tilt	/	24.69	25.5	0.173	0.21	0.284	0.34	-0.01
19100	1900	50RB-Mid	Left	Cheek	/	23.83	24.5	0.138	0.16	0.222	0.26	-0.13
19100	1900	50RB-Mid	Left	Tilt	/	23.83	24.5	0.103	0.12	0.159	0.19	0.05
19100	1900	50RB-Mid	Right	Cheek	/	23.83	24.5	0.16	0.19	0.247	0.29	-0.04
19100	1900	50RB-Mid	Right	Tilt	/	23.83	24.5	0.135	0.16	0.222	0.26	-0.06

Note1: The LTE mode is QPSK_20MHz.

Table 14.1-14: SAR Values (LTE Band2 – Body worn)

Frequency		Mode	Figure No.	Ambient Temperature: 22.9 °C		Liquid Temperature: 22.5°C		Measured SAR(1g) (W/kg)	Reported SAR(1g) (W/kg)	Power Drift (dB)
Ch.	MHz			Conducted Power (dBm)	Max. tune-up Power (dBm)	Measured SAR(10g) (W/kg)	Reported SAR(10g) (W/kg)			
19100	1900	1RB-Mid Front	/	22.88	23.5	0.194	0.22	0.329	0.38	-0.01
19100	1900	1RB-Mid Rear	Fig.14	22.88	23.5	0.226	0.26	0.392	0.45	0.09
19100	1900	50RB-Mid Front	/	22.92	23.5	0.188	0.21	0.317	0.36	-0.09
19100	1900	50RB-Mid Rear	/	22.92	23.5	0.219	0.25	0.38	0.43	-0.13

Note1: The distance between the EUT and the phantom bottom is 10mm.

Note2: The LTE mode is QPSK_20MHz.

Table 14.1-15: SAR Values (LTE Band2 – Hotspot)

Frequency		Mode	Figure No.	Ambient Temperature: 22.9 °C		Liquid Temperature: 22.5 °C		Measured SAR(1g) (W/kg)	Reported SAR(1g) (W/kg)	Power Drift (dB)
Ch.	MHz			Conducted Power (dBm)	Max. tune-up Power (dBm)	Measured SAR(10g) (W/kg)	Reported SAR(10g) (W/kg)			
19100	1900	1RB-Mid Front	/	21.84	22.5	0.277	0.32	0.465	0.54	0.18
19100	1900	1RB-Mid Rear	/	21.84	22.5	0.322	0.37	0.569	0.66	0.12
19100	1900	1RB-Mid Left	/	21.84	22.5	0.061	0.07	0.104	0.12	-0.04
19100	1900	1RB-Mid Right	/	21.84	22.5	0.147	0.17	0.247	0.29	0.16
19100	1900	1RB-Mid Bottom	Fig.15	21.84	22.5	0.439	0.51	0.832	0.97	0.06
18900	1880	1RB-Mid Bottom	/	21.69	22.5	0.397	0.48	0.745	0.90	-0.06
18700	1860	1RB-Mid Bottom	/	21.62	22.5	0.41	0.50	0.777	0.95	0.02
19100	1900	100RB Bottom	/	21.78	22.5	0.373	0.44	0.703	0.83	0.17
19100	1900	50RB-Mid Front	/	21.85	22.5	0.267	0.31	0.444	0.52	-0.05
19100	1900	50RB-Mid Rear	/	21.85	22.5	0.309	0.36	0.535	0.62	0.02
19100	1900	50RB-Mid Left	/	21.85	22.5	0.061	0.07	0.105	0.12	0.05
19100	1900	50RB-Mid Right	/	21.85	22.5	0.139	0.16	0.233	0.27	0.08
19100	1900	50RB-Mid Bottom	/	21.85	22.5	0.397	0.46	0.751	0.87	-0.04
18900	1880	50RB-Mid Bottom	/	21.79	22.5	0.385	0.45	0.734	0.86	-0.15
18700	1860	50RB-Mid Bottom	/	21.59	22.5	0.398	0.49	0.756	0.93	-0.09

Note1: The distance between the EUT and the phantom bottom is 10mm.

Note2: The LTE mode is QPSK_20MHz.

Table 14.1-16: SAR Values (LTE Band5 - Head)

Frequency		Mode	Side	Test Position	Figure No./Note	Ambient Temperature: 22.9 °C		Liquid Temperature: 22.5 °C		Measured SAR(1g) (W/kg)	Reported SAR(1g) (W/kg)	Power Drift (dB)
Ch.	MHz					Conducted Power (dBm)	Max. tune-up Power (dBm)	Measured SAR(10g) (W/kg)	Reported SAR(10g) (W/kg)			
20600	844	1RB_High	Left	Cheek	Fig.16	24.94	25.5	0.464	0.53	0.649	0.74	0.02
20600	844	1RB_High	Left	Tilt	/	24.94	25.5	0.387	0.44	0.638	0.73	-0.01
20600	844	1RB_High	Right	Cheek	/	24.94	25.5	0.412	0.47	0.633	0.72	-0.04
20600	844	1RB_High	Right	Tilt	/	24.94	25.5	0.328	0.37	0.543	0.62	-0.03
20600	844	25RB_High	Left	Cheek	/	23.93	24.5	0.357	0.41	0.523	0.60	-0.18
20600	844	25RB_High	Left	Tilt	/	23.93	24.5	0.315	0.36	0.517	0.59	-0.04
20600	844	25RB_High	Right	Cheek	/	23.93	24.5	0.327	0.37	0.502	0.57	-0.08
20600	844	25RB_High	Right	Tilt	/	23.93	24.5	0.258	0.29	0.429	0.49	-0.18

Note: The LTE mode is QPSK_10MHz.

Table 14.1-17: SAR Values (LTE Band5 –Body)

Frequency		Mode	Figure No.	Conduct ed Power (dBm)	Max. tune-up Power (dBm)	Measured SAR(10g) (W/kg)	Reported SAR(10g) (W/kg)	Measured SAR(1g) (W/kg)	Reported SAR(1g) (W/kg)	Power Drift (dB)	
Ch.	MHz										
		Ambient Temperature: 22.9 °C				Liquid Temperature: 22.5°C					
20600	844	1RB-High Front	/	24.94	25.5	0.167	0.19	0.222	0.25	-0.14	
20600	844	1RB-High Rear	Fig.17	24.94	25.5	0.311	0.35	0.549	0.62	-0.04	
20600	844	1RB-High Left	/	24.94	25.5	0.114	0.13	0.165	0.19	-0.08	
20600	844	1RB-High Right		24.94	25.5	0.248	0.28	0.361	0.41	-0.04	
20600	844	1RB-High Top	/	24.94	25.5	0.193	0.22	0.353	0.40	-0.03	
20600	844	25RB-High Front	/	23.93	24.5	0.129	0.15	0.172	0.20	0.01	
20600	844	25RB-High Rear	/	23.93	24.5	0.242	0.28	0.419	0.48	0.11	
20600	844	25RB-High Left	/	23.93	24.5	0.089	0.10	0.127	0.14	0.03	
20600	844	25RB-High Right	/	23.93	24.5	0.192	0.22	0.277	0.32	-0.09	
20600	844	25RB-High Bottom	/	23.93	24.5	0.149	0.17	0.273	0.31	-0.10	

Note1: The distance between the EUT and the phantom bottom is 10mm.

Note2: The LTE mode is QPSK_10MHz.

Table 14.1-18: SAR Values (LTE Band7 - Head)

Frequency		Mode	Side	Test Position	Figure No.	Condu cted Power (dBm)	Max. tune-up Power (dBm)	Measured SAR(10g) (W/kg)	Reported SAR(10g) (W/kg)	Measure d SAR(1g) (W/kg)	Reporte d SAR(1g) (W/kg)	Powe r Drift (dB)
Ch.	MHz											
		Ambient Temperature: 22.9 °C				Liquid Temperature: 22.5°C						
21350	2560	1RB-Mid	Left	Cheek	Fig.18	24.37	25	0.16	0.18	0.31	0.36	0.02
21350	2560	1RB-Mid	Left	Tilt	/	24.37	25	0.045	0.05	0.089	0.10	-0.08
21350	2560	1RB-Mid	Right	Cheek	/	24.37	25	0.078	0.09	0.149	0.17	-0.01
21350	2560	1RB-Mid	Right	Tilt	/	24.37	25	0.058	0.07	0.113	0.13	0.12
21350	2560	50RB-Mid	Left	Cheek	/	23.45	24	0.134	0.15	0.263	0.30	-0.01
21350	2560	50RB-Mid	Left	Tilt	/	23.45	24	0.034	0.04	0.069	0.08	0.17
21350	2560	50RB-Mid	Right	Cheek	/	23.45	24	0.067	0.08	0.129	0.15	0.02
21350	2560	50RB-Mid	Right	Tilt	/	23.45	24	0.049	0.06	0.095	0.11	0.17

Note1: The LTE mode is QPSK_20MHz.

Table 14.1-19: SAR Values (LTE Band7 – Body worn)

Frequency		Mode	Figure No.	Conducted Power (dBm)	Max. tune-up Power (dBm)	Measured SAR(10g) (W/kg)	Reported SAR(10g) (W/kg)	Measured SAR(1g) (W/kg)	Reported SAR(1g) (W/kg)	Power Drift (dB)
Ch.	MHz									
		Ambient Temperature: 22.9 °C				Liquid Temperature: 22.5 °C				
21350	2560	1RB-Mid Front	/	20.45	21	0.093	0.11	0.164	0.19	-0.12
21350	2560	1RB-Mid Rear	Fig.19	20.45	21	0.212	0.24	0.435	0.49	0.01
21350	2560	50RB-Mid Front	/	20.48	21	0.091	0.10	0.16	0.18	-0.11
21350	2560	50RB-Mid Rear	/	20.48	21	0.208	0.23	0.424	0.48	0.09

Note1: The distance between the EUT and the phantom bottom is 10mm.

Note2: The LTE mode is QPSK_20MHz.

Table 14.1-20: SAR Values (LTE Band7 – Hotspot)

Frequency		Mode	Figure No.	Conducted Power (dBm)	Max. tune-up Power (dBm)	Measured SAR(10g) (W/kg)	Reported SAR(10g) (W/kg)	Measured SAR(1g) (W/kg)	Reported SAR(1g) (W/kg)	Power Drift (dB)
Ch.	MHz									
		Ambient Temperature: 22.9 °C				Liquid Temperature: 22.5 °C				
21350	2560	1RB-Mid Front	/	20.45	21	0.162	0.18	0.332	0.38	0.08
21350	2560	1RB-Mid Rear	Fig.20	20.45	21	0.453	0.51	1.03	1.17	0.04
21100	2535	1RB-Mid Rear	/	20.33	21	0.459	0.54	0.994	1.16	0.13
20850	2510	1RB-Mid Rear	/	20.25	21	0.447	0.53	0.966	1.15	-0.09
21350	2560	100RB Rear	/	20.42	21	0.443	0.51	1.01	1.15	-0.17
21350	2560	1RB-Mid Left	/	20.45	21	0.063	0.07	0.108	0.12	-0.14
21350	2560	1RB-Mid Right	/	20.45	21	0.063	0.07	0.104	0.12	-0.02
21350	2560	1RB-Mid Bottom	/	20.45	21	0.341	0.39	0.762	0.86	-0.08
21100	2535	1RB-Mid Bottom	/	20.33	21	0.369	0.43	0.797	0.93	0.02
20850	2510	1RB-Mid Bottom	/	20.25	21	0.374	0.44	0.818	0.97	0.02
20850	2510	100RB Bottom	/	20.42	21	0.354	0.40	0.83	0.95	-0.17
21350	2560	50RB-Mid Front	/	20.48	21	0.159	0.18	0.323	0.36	-0.10
21350	2560	50RB-Mid Rear	/	20.48	21	0.438	0.49	0.958	1.08	-0.05
21100	2535	50RB-Mid Rear	/	20.32	21	0.447	0.52	0.966	1.13	-0.07
20850	2510	50RB-Mid Rear	/	20.25	21	0.433	0.51	0.939	1.12	0.02
21100	2535	100RB Rear	/	20.34	21	0.438	0.51	0.955	1.11	0.12
21350	2560	50RB-Mid Left	/	20.48	21	0.064	0.07	0.111	0.13	-0.16
21350	2560	50RB-Mid Right	/	20.48	21	0.059	0.07	0.109	0.12	0.03
21350	2560	50RB-Mid Bottom	/	20.48	21	0.34	0.38	0.726	0.82	0.14
21100	2535	50RB-Mid Bottom	/	20.32	21	0.358	0.42	0.771	0.90	0.15
20850	2510	50RB-Mid Bottom	/	20.25	21	0.361	0.43	0.788	0.94	-0.12
20850	2510	100RB Bottom	/	20.11	21	0.346	0.42	0.753	0.92	0.02

Note1: The distance between the EUT and the phantom bottom is 10mm.

Note2: The LTE mode is QPSK_20MHz.

Table 14.1-21: SAR Values (LTE Band12 - Head)

Frequency		Ambient Temperature: 22.9 °C					Liquid Temperature: 22.5 °C					
Ch.	MHz	Mode	Side	Test Position	Figure No./Note	Conducted Power (dBm)	Max. tune-up Power (dBm)	Measured SAR(10g) (W/kg)	Reported SAR(10g)(W/kg)	Measured SAR(1g) (W/kg)	Reported SAR(1g) (W/kg)	Power Drift (dB)
23130	711	1RB_Mid	Left	Cheek	Fig.21	24.88	25.5	0.444	0.51	0.593	0.68	-0.01
23130	711	1RB_Mid	Left	Tilt	/	24.88	25.5	0.314	0.36	0.488	0.56	0.11
23130	711	1RB_Mid	Right	Cheek	/	24.88	25.5	0.391	0.45	0.554	0.64	-0.18
23130	711	1RB_Mid	Right	Tilt	/	24.88	25.5	0.266	0.31	0.401	0.46	-0.07
23130	711	25RB_High	Left	Cheek	/	23.93	24.5	0.332	0.38	0.439	0.50	0.13
23130	711	25RB_High	Left	Tilt	/	23.93	24.5	0.241	0.27	0.375	0.43	-0.17
23130	711	25RB_High	Right	Cheek	/	23.93	24.5	0.285	0.32	0.395	0.45	-0.02
23130	711	25RB_High	Right	Tilt	/	23.93	24.5	0.205	0.23	0.305	0.35	-0.11

Note: The LTE mode is QPSK_10MHz.

Table 14.1-22: SAR Values (LTE Band12 –Body)

Frequency		Ambient Temperature: 22.9 °C					Liquid Temperature: 22.5 °C				
Ch.	MHz	Mode	Figure No.	Conducted Power (dBm)	Max. tune-up Power (dBm)	Measured SAR(10g) (W/kg)	Reported SAR(10g) (W/kg)	Measured SAR(1g) (W/kg)	Reported SAR(1g) (W/kg)	Power Drift (dB)	
23130	711	1RB-Mid Front	/	24.88	25.5	0.221	0.25	0.281	0.32	0.15	
23130	711	1RB-Mid Rear	Fig.22	24.88	25.5	0.349	0.40	0.448	0.52	0.15	
23130	711	1RB-Mid Left	/	24.88	25.5	0.158	0.18	0.217	0.25	0.02	
23130	711	1RB-Mid Right	/	24.88	25.5	0.286	0.33	0.404	0.47	-0.14	
23130	711	1RB-Mid Top	/	24.88	25.5	0.108	0.12	0.191	0.22	-0.04	
23130	711	25RB-High Front	/	23.93	24.5	0.168	0.19	0.215	0.25	-0.07	
23130	711	25RB-High Rear	/	23.93	24.5	0.265	0.30	0.34	0.39	0.06	
23130	711	25RB-High Left	/	23.93	24.5	0.149	0.17	0.204	0.23	0.05	
23130	711	25RB-High Right	/	23.93	24.5	0.273	0.31	0.373	0.43	0.18	
23130	711	25RB-High Bottom	/	23.93	24.5	0.084	0.10	0.148	0.17	-0.02	

Note1: The distance between the EUT and the phantom bottom is 10mm.

Note2: The LTE mode is QPSK_10MHz.

Table 14.1-23: SAR Values (LTE Band13 - Head)

Frequency		Mode	Side	Test Position	Figure No.	Ambient Temperature: 22.9 °C		Liquid Temperature: 22.5°C		Measured SAR(1g) (W/kg)	Reported SAR(1g) (W/kg)	Power Drift (dB)
Ch.	MHz					Conducted Power (dBm)	Max. tune-up Power (dBm)	Measured SAR(10g) (W/kg)	Reported SAR(10g) (W/kg)			
23230	782	1RB-Mid	Left	Cheek	Fig.23	24.79	25.5	0.492	0.58	0.675	0.79	0.01
23230	782	1RB-Mid	Left	Tilt	/	24.79	25.5	0.343	0.40	0.55	0.65	-0.05
23230	782	1RB-Mid	Right	Cheek	/	24.79	25.5	0.427	0.50	0.626	0.74	0.16
23230	782	1RB-Mid	Right	Tilt	/	24.79	25.5	0.299	0.35	0.481	0.57	-0.01
23230	782	25RB-Mid	Left	Cheek	/	23.67	24.5	0.38	0.46	0.521	0.63	0.16
23230	782	25RB-Mid	Left	Tilt	/	23.67	24.5	0.265	0.32	0.422	0.51	-0.04
23230	782	25RB-Mid	Right	Cheek	/	23.67	24.5	0.355	0.43	0.527	0.64	0.04
23230	782	25RB-Mid	Right	Tilt	/	23.67	24.5	0.236	0.29	0.374	0.45	0.15

Note1: The LTE mode is QPSK_10MHz.

Table 14.1-24: SAR Values (LTE Band13 - Body)

Frequency		Mode	Figure No.	Ambient Temperature: 22.9 °C		Liquid Temperature: 22.5°C		Measured SAR(1g) (W/kg)	Reported SAR(1g) (W/kg)	Power Drift (dB)
Ch.	MHz			Conducted Power (dBm)	Max. tune-up Power (dBm)	Measured SAR(10g) (W/kg)	Reported SAR(10g) (W/kg)			
23230	782	1RB-Mid Front	/	24.79	25.5	0.18	0.21	0.247	0.29	-0.13
23230	782	1RB-Mid Rear	Fig.24	24.79	25.5	0.251	0.30	0.439	0.52	-0.02
23230	782	1RB-Mid Left	/	24.79	25.5	0.129	0.15	0.189	0.22	0.12
23230	782	1RB-Mid Right	/	24.79	25.5	0.27	0.32	0.394	0.46	0.14
23230	782	1RB-Mid Top	/	24.79	25.5	0.145	0.17	0.278	0.33	0.03
23230	782	25RB-Mid Front	/	23.67	24.5	0.137	0.17	0.186	0.23	-0.11
23230	782	25RB-Mid Rear	/	23.67	24.5	0.203	0.25	0.345	0.42	0.15
23230	782	25RB-Mid Left	/	23.67	24.5	0.098	0.12	0.142	0.17	-0.17
23230	782	25RB-Mid Right	/	23.67	24.5	0.209	0.25	0.307	0.37	0.11
23230	782	25RB-Mid Top	/	23.67	24.5	0.112	0.14	0.216	0.26	-0.18

Note1: The distance between the EUT and the phantom bottom is 10mm.

Note2: The LTE mode is QPSK_10MHz.

Table 14.1-25: SAR Values (LTE Band66 - Head)

Frequency		Mode	Side	Test Position	Figure No.	Ambient Temperature: 22.9 °C		Liquid Temperature: 22.5°C		Measured SAR(1g) (W/kg)	Reported SAR(1g) (W/kg)	Power Drift (dB)
Ch.	MHz					Conducted Power (dBm)	Max. tune-up Power (dBm)	Measured SAR(10g) (W/kg)	Reported SAR(10g) (W/kg)			
132572	1770	1RB-Mid	Left	Cheek	Fig.25	24.81	25.5	0.136	0.16	0.22	0.26	0.04
132572	1770	1RB-Mid	Left	Tilt	/	24.81	25.5	0.063	0.07	0.094	0.11	-0.03
132572	1770	1RB-Mid	Right	Cheek	/	24.81	25.5	0.103	0.12	0.157	0.18	0.11
132572	1770	1RB-Mid	Right	Tilt	/	24.81	25.5	0.085	0.10	0.135	0.16	-0.16
132572	1770	50RB-High	Left	Cheek	/	23.87	24.5	0.102	0.12	0.164	0.19	-0.10
132572	1770	50RB-High	Left	Tilt	/	23.87	24.5	0.05	0.06	0.076	0.09	0.04
132572	1770	50RB-High	Right	Cheek	/	23.87	24.5	0.081	0.09	0.125	0.14	-0.12
132572	1770	50RB-High	Right	Tilt	/	23.87	24.5	0.068	0.08	0.11	0.13	-0.04

Note1: The LTE mode is QPSK_20MHz.

Table 14.1-26: SAR Values (LTE Band66 – Body worn)

Frequency		Mode	Figure No.	Ambient Temperature: 22.9 °C		Liquid Temperature: 22.5°C		Measured SAR(1g) (W/kg)	Reported SAR(1g) (W/kg)	Power Drift (dB)
Ch.	MHz			Conducted Power (dBm)	Max. tune-up Power (dBm)	Measured SAR(10g) (W/kg)	Reported SAR(10g) (W/kg)			
132572	1770	1RB-Low Front	/	22.88	23.5	0.143	0.16	0.23	0.27	-0.15
132572	1770	1RB-Low Rear	Fig.26	22.88	23.5	0.239	0.28	0.406	0.47	0.11
132572	1770	50RB-High Front	/	22.91	23.5	0.137	0.16	0.228	0.26	-0.11
132572	1770	50RB-High Rear	/	22.91	23.5	0.228	0.26	0.388	0.44	-0.16

Note1: The distance between the EUT and the phantom bottom is 15mm.

Note2: The LTE mode is QPSK_20MHz.

Table 14.1-27: SAR Values (LTE Band66 - Hotspot)

Frequency		Mode	Figure No.	Ambient Temperature: 22.9 °C		Liquid Temperature: 22.5°C				Power Drift (dB)
Ch.	MHz			Conducted Power (dBm)	Max. tune-up Power (dBm)	Measured SAR(10g) (W/kg)	Reported SAR(10g) (W/kg)	Measured SAR(1g) (W/kg)	Reported SAR(1g) (W/kg)	
132572	1770	1RB-Mid Front	/	21.84	22.5	0.219	0.25	0.384	0.45	0.15
132572	1770	1RB-Mid Rear	/	21.84	22.5	0.389	0.45	0.704	0.82	0.09
132322	1745	1RB-Mid Rear	/	21.56	22.5	0.394	0.49	0.732	0.91	0.17
132072	1720	1RB-Mid Rear	/	21.60	22.5	0.419	0.52	0.788	0.97	-0.16
132072	1720	100RB Rear	/	21.64	22.5	0.394	0.48	0.729	0.89	0.10
132572	1770	1RB-Mid Left	/	21.84	22.5	0.067	0.08	0.112	0.13	0.06
132572	1770	1RB-Mid Right	/	21.84	22.5	0.073	0.08	0.12	0.14	0.02
132572	1770	1RB-Mid Bottom	/	21.84	22.5	0.497	0.58	0.935	1.09	-0.08
132322	1745	1RB-Mid Bottom	/	21.56	22.5	0.489	0.61	0.913	1.13	-0.15
132072	1720	1RB-Mid Bottom	Fig.27	21.60	22.5	0.517	0.64	0.966	1.19	0.11
132072	1720	100RB Bottom	/	21.64	22.5	0.485	0.59	0.907	1.11	-0.06
132572	1770	50RB-High Front	/	21.88	22.5	0.209	0.24	0.37	0.43	-0.15
132572	1770	50RB-High Rear	/	21.88	22.5	0.373	0.43	0.677	0.78	-0.03
132322	1745	50RB-High Rear	/	21.65	22.5	0.385	0.47	0.717	0.87	0.17
132072	1720	50RB-High Rear	/	21.58	22.5	0.386	0.48	0.727	0.90	0.07
132572	1770	50RB-High Left	/	21.88	22.5	0.065	0.07	0.108	0.12	0.16
132572	1770	50RB-High Right	/	21.88	22.5	0.074	0.09	0.123	0.14	0.09
132572	1770	50RB-High Bottom	/	21.88	22.5	0.479	0.55	0.904	1.04	-0.18
132322	1745	50RB-High Bottom	/	21.65	22.5	0.482	0.59	0.907	1.10	0.02
132072	1720	50RB-High Bottom	/	21.58	22.5	0.493	0.61	0.912	1.13	0.05

Note1: The distance between the EUT and the phantom bottom is 10mm.

Note2: The LTE mode is QPSK_20MHz.

14.2 WLAN Evaluation for 2.4G

Head Evaluation:

Table 14.2-1: SAR Values (WLAN - Head)– 802.11b

Frequency		Side	Test Position	Figure No./ Note	Conducte d Power (dBm)	Max. tune-up Power (dBm)	Measured SAR(10g) (W/kg)	Reported SAR(10g)(W/kg)	Measured SAR(1g) (W/kg)	Reported SAR(1g)(W/kg)	Power Drift (dB)
Ch.	MHz										
6	2437	Left	Cheek	Note1	18.87	19	0.218	0.22	0.378	0.39	-0.12
6	2437	Left	Tilt	Note1	18.87	19	0.202	0.21	0.405	0.42	-0.16
6	2437	Right	Cheek	Note1/ Fig.28	18.87	19	0.333	0.34	0.649	0.67	0.06
6	2437	Right	Tilt	Note1	18.87	19	0.231	0.24	0.482	0.50	-0.06
6	2437	Left	Cheek	Note2	15.9	16	0.093	0.10	0.169	0.17	-0.18
6	2437	Left	Tilt	Note2	15.9	16	0.094	0.10	0.195	0.20	-0.10
6	2437	Right	Cheek	Note2	15.9	16	0.166	0.17	0.326	0.33	0.15
6	2437	Right	Tilt	Note2	15.9	16	0.115	0.12	0.238	0.24	0.14

Note1: The results are used for Wifi transmit standalone.

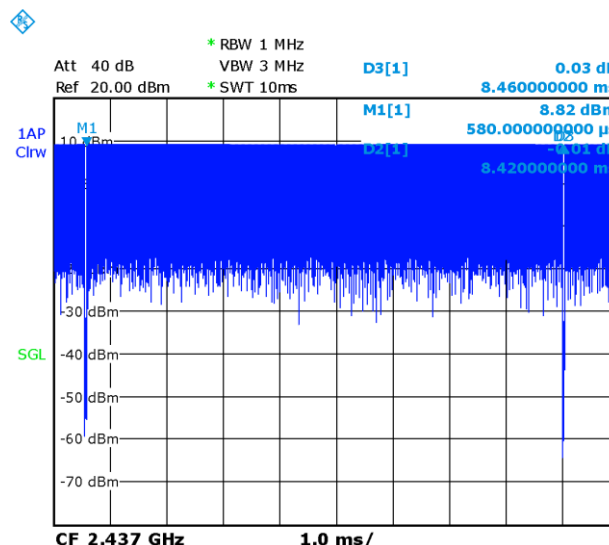
Note2: The results are used for Wifi transmit with WWAN.

According to the KDB248227 D01, The reported SAR must be scaled to 100% transmission duty factor to determine compliance at the maximum tune-up tolerance limit. The scaled reported SAR is presented as below.

Table 14.2-2: SAR Values (WLAN - Head) – 802.11b (Scaled Reported SAR)

Frequency		Side	Test Position	Actual duty factor	maximum duty factor	Reported SAR (1g)(W/kg)	Scaled reported SAR (1g)(W/kg)
Ch.	MHz						
6	2437	Right	Cheek	99.5%	100%	0.67	0.67

SAR is not required for OFDM because the 802.11b adjusted SAR ≤ 1.2 W/kg.



Picture 14.2-1 Duty factor plot

Body Evaluation:
Table 14.2-3: SAR Values (WLAN - Body)– 802.11b

Frequency		Test Position	Figure No./ Note	Conducted Power (dBm)	Max. tune-up Power (dBm)	Measured SAR(10g) (W/kg)	Reported SAR(10g)(W/kg)	Measured SAR(1g) (W/kg)	Reported SAR(1g)(W/kg)	Power Drift (dB)
Ch.	MHz									
6	2437	Front	Note1	18.87	19	0.07	0.07	0.154	0.16	-0.18
6	2437	Rear	Note1/ Fig.29	18.87	19	0.101	0.10	0.23	0.24	0.06
6	2437	Left	Note1	18.87	19	0.083	0.09	0.201	0.21	-0.05
6	2437	Top	Note1	18.87	19	0.078	0.08	0.181	0.19	0.11
6	2437	Front	Note2	15.9	16	0.039	0.04	0.07	0.07	0.07
6	2437	Rear	Note2	15.9	16	0.0485	0.05	0.109	0.11	0.09
6	2437	Left	Note2	15.9	16	0.046	0.05	0.091	0.09	0.04
6	2437	Top	Note2	15.9	16	0.042	0.04	0.081	0.08	-0.07

Note: The distance between the EUT and the phantom bottom is 10mm.

Note1: The results are used for Wifi transmit standalone.

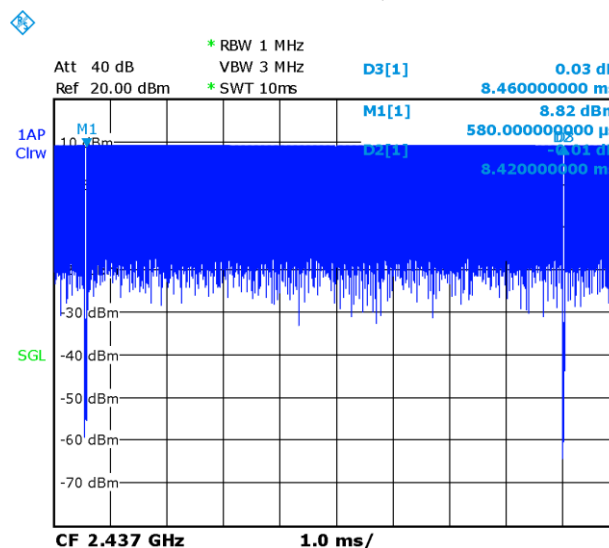
Note2: The results are used for Wifi transmit with WWAN.

According to the KDB248227 D01, The reported SAR must be scaled to 100% transmission duty factor to determine compliance at the maximum tune-up tolerance limit. The scaled reported SAR is presented as below.

Table 14.3-4: SAR Values (WLAN - Body) – 802.11b (Scaled Reported SAR)

Frequency		Test Position	Actual duty factor	maximum duty factor	Reported SAR (1g)(W/kg)	Scaled reported SAR (1g)(W/kg)
Ch.	MHz					
6	2437	Rear	99.5%	100%	0.24	0.24

SAR is not required for OFDM because the 802.11b adjusted SAR \leq 1.2 W/kg.


Picture 14.2-2 Duty factor plot

14.3 SAR results for BT

Table 14.3-1: SAR Values (BT - Head)

Ambient Temperature: 22.9 °C Liquid Temperature: 22.5°C											
Frequency		Side	Test Position	Figure No.	Conducted Power (dBm)	Max. tune-up Power (dBm)	Measured SAR(10g) (W/kg)	Reported SAR(10g) (W/kg)	Measured SAR(1g) (W/kg)	Reported SAR(1g)(W/kg)	Power Drift (dB)
Ch.	MHz										
78	2480	Left	Cheek	/	10.18	11.2	<0.01	<0.01	<0.01	<0.01	/
78	2480	Left	Tilt	/	10.18	11.2	<0.01	<0.01	<0.01	<0.01	/
78	2480	Right	Cheek	/	10.18	11.2	<0.01	<0.01	<0.01	<0.01	/
78	2480	Right	Tilt	/	10.18	11.2	<0.01	<0.01	<0.01	<0.01	/

Table 14.3-2: SAR Values (BT - Body)

Ambient Temperature: 22.9 °C Liquid Temperature: 22.5°C										
Frequency		Test Position	Figure No.	Conducted Power (dBm)	Max. tune-up Power (dBm)	Measured SAR(10g) (W/kg)	Reported SAR(10g) (W/kg)	Measured SAR(1g) (W/kg)	Reported SAR(1g)(W/kg)	Power Drift (dB)
Ch.	MHz									
78	2480	Front	/	10.18	11.2	<0.01	<0.01	<0.01	<0.01	/
78	2480	Rear	/	10.18	11.2	<0.01	<0.01	<0.01	<0.01	/
78	2480	Right	/	10.18	11.2	<0.01	<0.01	<0.01	<0.01	/
78	2480	Top	/	10.18	11.2	<0.01	<0.01	<0.01	<0.01	/

Note1: The distance between the EUT and the phantom bottom is 10mm.

14.4 SAR results for 10-g extremity SAR

According to the KDB648474 D04, the UMPC mini-tablet procedures must also be applied to test the SAR of all surfaces and edges with an antenna located at ≤ 25 mm from that surface or edge, in direct contact with a flat phantom, for 10-g extremity SAR according to the body-equivalent tissue dielectric parameters in KDB Publication 865664 D01 to address interactive hand use exposure conditions. When hotspot mode applies, 10-g extremity SAR is required only for the surfaces and edges with hotspot mode 1-g reported SAR > 1.2 W/kg. If power reduction applied for hotspot mode, the SAR values should be scaled to normal power, and then compare it with 1.2W/kg.

Table 14.4-1: Dimensions for phablet judgment

Overall diagonal dimension(mm)	Display diagonal dimension(mm)	Phablet
166	162	Yes

Table 14.4-2: Scaled SAR for Bands with power reduction

Band	Frequency		Mode	Reported SAR(1g)(W/kg)	Max. tune-up Power (dBm)- Hotspot on	Max. tune-up Power (dBm)- Hotspot off	Scaled SAR(1g) (W/kg)
	Ch.	MHz					
WCDMA1900	9400	1880	RMC Rear	0.68	22	23	0.86
WCDMA1900	9262	1852.4	RMC Bottom	1.06	22	23	1.33
WCDMA1700	1412	1732.4	RMC Rear	0.83	21.5	22.5	1.05
WCDMA1700	1312	1712.4	RMC Bottom	1.04	21.5	22.5	1.31
LTE B2	19100	1900	1RB-Mid Rear	0.66	22.5	23.5	0.83
LTE B2	19100	1900	1RB-Mid Bottom	0.97	22.5	23.5	1.22
LTE B66	132072	1720	1RB-Mid Rear	0.97	22.5	23.5	1.22
LTE B66	132072	1745	1RB-Mid Bottom	1.19	22.5	23.5	1.50

Table 14.4-3: SAR Values for phablet

Band	Frequency		Test Mode	Figure No./Note	Conducted Power (dBm)	Max. tune-up Power (dBm)	Measured SAR(10g) (W/kg)	Reported SAR(10g)(W/kg)	Measured SAR(1g) (W/kg)	Reported SAR(1g)(W/kg)	Power Drift (dB)
	Ch.	MHz									
WCDMA1900	9538	1907.6	RMC Bottom	/	21.95	23	2.1	2.67	5.03	6.41	-0.05
WCDMA1900	9400	1880	RMC Bottom	/	21.87	23	2.07	2.69	4.92	6.38	0.12
WCDMA1900	9262	1852.4	RMC Bottom	/	21.7	23	2.11	2.85	5.03	6.79	0.13
WCDMA1700	1513	1752.6	RMC Bottom	/	21.3	22.5	2.09	2.76	4.92	6.49	0.09
WCDMA1700	1412	1732.4	RMC Bottom	/	21.18	22.5	2.02	2.74	4.78	6.48	-0.11
WCDMA1700	1312	1712.4	RMC Bottom	/	21.26	22.5	2.02	2.69	4.82	6.41	0.12
LTE B2	19100	1900	1RB-Mid Bottom	/	22.88	23.5	2.25	2.60	5.35	6.17	-0.05
LTE B2	18900	1880	1RB-Mid Bottom	/	22.69	23.5	2.24	2.70	5.33	6.42	0.16
LTE B2	18700	1860	1RB-Mid Bottom	/	22.6	23.5	2.27	2.79	5.36	6.59	0.02
LTE B66	132572	1770	1RB-Mid Rear	/	22.88	23.5	1.91	2.20	4.77	5.50	-0.09
LTE B66	132322	1745	1RB-Mid Rear	/	22.65	23.5	1.77	2.15	4.34	5.28	-0.05
LTE B66	132072	1720	1RB-Mid Rear	/	22.66	23.5	1.79	2.17	4.54	5.51	0.06
LTE B66	132572	1770	1RB-Mid Bottom	Fig.30	22.88	23.5	2.5	2.88	5.83	6.72	0.06
LTE B66	132322	1745	1RB-Mid Bottom	/	22.65	23.5	2.36	2.87	5.45	6.63	-0.11
LTE B66	132072	1720	1RB-Mid Bottom	/	22.66	23.5	2.35	2.85	5.42	6.58	0.07
WIFI2.4G	6	2437	Rear	/	15.9	16	0.343	0.35	0.889	0.91	0.01

Note: The distance between the EUT and the phantom bottom is 0mm.

15 SAR Measurement Variability

SAR measurement variability must be assessed for each frequency band, which is determined by the SAR probe calibration point and tissue-equivalent medium used for the device measurements. When both head and body tissue-equivalent media are required for SAR measurements in a frequency band, the variability measurement procedures should be applied to the tissue medium with the highest measured SAR, using the highest measured SAR configuration for that tissue-equivalent medium.

The following procedures are applied to determine if repeated measurements are required.

- 1) Repeated measurement is not required when the original highest measured SAR is < 0.80 W/kg; steps 2) through 4) do not apply.
- 2) When the original highest measured SAR is ≥ 0.80 W/kg, repeat that measurement once.
- 3) Perform a second repeated measurement only if the ratio of largest to smallest SAR for the original and first repeated measurements is > 1.20 or when the original or repeated measurement is ≥ 1.45 W/kg ($\sim 10\%$ from the 1-g SAR limit).
- 4) Perform a third repeated measurement only if the original, first or second repeated measurement is ≥ 1.5 W/kg and the ratio of largest to smallest SAR for the original, first and second repeated measurements is > 1.20

Table 15.1: SAR Measurement Variability for Head GSM1900 (1g)

Frequency		Mode	Test Position	Original SAR (W/kg)	First Repeated SAR (W/kg)	The Ratio	Second Repeated SAR (W/kg)
Ch.	MHz						
810	1909.8	GPRS(2)	Bottom 10mm	0.863	0.844	1.02	/

Table 15.2: SAR Measurement Variability for Head LTE B2 (1g)

Frequency		Mode	Test Position	Original SAR (W/kg)	First Repeated SAR (W/kg)	The Ratio	Second Repeated SAR (W/kg)
Ch.	MHz						
19100	1900	1RB-Mid	Bottom 10mm	0.832	0.811	1.03	/

Table 15.3: SAR Measurement Variability for Body LTE B7 (1g)

Frequency		Mode	Test Position	Original SAR (W/kg)	First Repeated SAR (W/kg)	The Ratio	Second Repeated SAR (W/kg)
Ch.	MHz						
21350	2560	1RB-Mid	Rear 10mm	1.03	1.01	1.02	/
20850	2510	100RB	Bottom 10mm	0.83	0.806	1.03	/

Table 15.4: SAR Measurement Variability for Body LTE B66 (1g)

Frequency		Mode	Test Position	Original SAR (W/kg)	First Repeated SAR (W/kg)	The Ratio	Second Repeated SAR (W/kg)
Ch.	MHz						
132072	1720	1RB-Mid	Bottom 10mm	0.966	0.958	1.01	/

16 Measurement Uncertainty

16.1 Measurement Uncertainty for Normal SAR Tests (300MHz~3GHz)

No.	Error Description	Type	Uncertainty value	Probably Distribution	Div.	(Ci) 1g	(Ci) 10g	Std. Unc. (1g)	Std. Unc. (10g)	Degree of freedom
Measurement system										
1	Probe calibration	B	6.0	N	1	1	1	6.0	6.0	∞
2	Isotropy	B	4.7	R	$\sqrt{3}$	0.7	0.7	1.9	1.9	∞
3	Boundary effect	B	1.0	R	$\sqrt{3}$	1	1	0.6	0.6	∞
4	Linearity	B	4.7	R	$\sqrt{3}$	1	1	2.7	2.7	∞
5	Detection limit	B	1.0	N	1	1	1	0.6	0.6	∞
6	Readout electronics	B	0.3	R	$\sqrt{3}$	1	1	0.3	0.3	∞
7	Response time	B	0.8	R	$\sqrt{3}$	1	1	0.5	0.5	∞
8	Integration time	B	2.6	R	$\sqrt{3}$	1	1	1.5	1.5	∞
9	RF ambient conditions-noise	B	0	R	$\sqrt{3}$	1	1	0	0	∞
10	RF ambient conditions-reflection	B	0	R	$\sqrt{3}$	1	1	0	0	∞
11	Probe positioned mech. restrictions	B	0.4	R	$\sqrt{3}$	1	1	0.2	0.2	∞
12	Probe positioning with respect to phantom shell	B	2.9	R	$\sqrt{3}$	1	1	1.7	1.7	∞
13	Post-processing	B	1.0	R	$\sqrt{3}$	1	1	0.6	0.6	∞
Test sample related										
14	Test sample positioning	A	3.3	N	1	1	1	3.3	3.3	71
15	Device holder uncertainty	A	3.4	N	1	1	1	3.4	3.4	5
16	Drift of output power	B	5.0	R	$\sqrt{3}$	1	1	2.9	2.9	∞
Phantom and set-up										
17	Phantom uncertainty	B	4.0	R	$\sqrt{3}$	1	1	2.3	2.3	∞
18	Liquid conductivity (target)	B	5.0	R	$\sqrt{3}$	0.64	0.43	1.8	1.2	∞
19	Liquid conductivity (meas.)	A	2.06	N	1	0.64	0.43	1.32	0.89	43
20	Liquid permittivity (target)	B	5.0	R	$\sqrt{3}$	0.6	0.49	1.7	1.4	∞
21	Liquid permittivity (meas.)	A	1.6	N	1	0.6	0.49	1.0	0.8	521

Combined standard uncertainty	$u_c' = \sqrt{\sum_{i=1}^{21} c_i^2 u_i^2}$							9.55	9.43	257
Expanded uncertainty (confidence interval of 95 %)	$u_e = 2u_c$							19.1	18.9	

16.2 Measurement Uncertainty for Fast SAR Tests (300MHz~3GHz)

No.	Error Description	Type	Uncertainty value	Probably Distribution	Div.	(Ci) 1g	(Ci) 10g	Std. Unc. (1g)	Std. Unc. (10g)	Degree of freedom
Measurement system										
1	Probe calibration	B	6.0	N	1	1	1	6.0	6.0	∞
2	Isotropy	B	4.7	R	$\sqrt{3}$	0.7	0.7	1.9	1.9	∞
3	Boundary effect	B	1.0	R	$\sqrt{3}$	1	1	0.6	0.6	∞
4	Linearity	B	4.7	R	$\sqrt{3}$	1	1	2.7	2.7	∞
5	Detection limit	B	1.0	R	$\sqrt{3}$	1	1	0.6	0.6	∞
6	Readout electronics	B	0.3	R	$\sqrt{3}$	1	1	0.3	0.3	∞
7	Response time	B	0.8	R	$\sqrt{3}$	1	1	0.5	0.5	∞
8	Integration time	B	2.6	R	$\sqrt{3}$	1	1	1.5	1.5	∞
9	RF ambient conditions-noise	B	0	R	$\sqrt{3}$	1	1	0	0	∞
10	RFambient conditions-reflection	B	0	R	$\sqrt{3}$	1	1	0	0	∞
11	Probe positioned mech. Restrictions	B	0.4	R	$\sqrt{3}$	1	1	0.2	0.2	∞
12	Probe positioning with respect to phantom shell	B	2.9	R	$\sqrt{3}$	1	1	1.7	1.7	∞
13	Post-processing	B	1.0	R	$\sqrt{3}$	1	1	0.6	0.6	∞
14	Fast SAR z-Approximation	B	7.0	R	$\sqrt{3}$	1	1	4.0	4.0	∞
Test sample related										
15	Test sample positioning	A	3.3	N	1	1	1	3.3	3.3	71
16	Device holder uncertainty	A	3.4	N	1	1	1	3.4	3.4	5
17	Drift of output power	B	5.0	R	$\sqrt{3}$	1	1	2.9	2.9	∞
Phantom and set-up										
18	Phantom uncertainty	B	4.0	R	$\sqrt{3}$	1	1	2.3	2.3	∞
19	Liquid conductivity (target)	B	5.0	R	$\sqrt{3}$	0.64	0.43	1.8	1.2	∞
20	Liquid conductivity (meas.)	A	2.06	N	1	0.64	0.43	1.32	0.89	43

21	Liquid permittivity (target)	B	5.0	R	$\sqrt{3}$	0.6	0.49	1.7	1.4	∞
22	Liquid permittivity (meas.)	A	1.6	N	1	0.6	0.49	1.0	0.8	521
Combined standard uncertainty		$u_c = \sqrt{\sum_{i=1}^{22} c_i^2 u_i^2}$						10.4	10.3	257
Expanded uncertainty (confidence interval of 95 %)		$u_e = 2u_c$						20.8	20.6	

17 MAIN TEST INSTRUMENTS

Table 17.1: List of Main Instruments

No.	Name	Type	Serial Number	Calibration Date	Valid Period
01	Network analyzer	N5239A	MY55491241	May 31, 2021	One year
02	Power meter	NRP2	106276	May 11, 2021	One year
03	Power sensor	NRP6A	101369		
04	Signal Generator	E4438C	MY49070393	May 14, 2021	One Year
05	Amplifier	60S1G4	0331848	No Calibration Requested	
06	BTS	CMW500	166370	June 25, 2021	One year
07	E-field Probe	SPEAG EX3DV4	7548	June 25, 2021	One year
08	DAE	SPEAG DAE4	1331	September 1, 2021	One year
09	Dipole Validation Kit	SPEAG D750V2	1017	July 12,,2021	One year
10	Dipole Validation Kit	SPEAG D835V2	4d069	July 21,,2021	One year
11	Dipole Validation Kit	SPEAG D1800V2	2d145	July 12,,2021	One year
12	Dipole Validation Kit	SPEAG D1900V2	5d101	July 15,2021	One year
13	Dipole Validation Kit	SPEAG D2450V2	853	July 26,2021	One year
14	Dipole Validation Kit	SPEAG D2600V2	1012	July 26,2021	One year

END OF REPORT BODY

ANNEX A Graph Results

GSM850_CH251 Left Cheek

Date: 2/22/2022

Electronics: DAE4 Sn1331

Medium: head 835 MHz

Medium parameters used: $f = 848.8$ MHz; $\sigma = 0.863$ S/m; $\epsilon_r = 44.639$; $\rho = 1000$ kg/m³

Ambient Temperature: 22.5°C, Liquid Temperature: 22.3°C

Communication System: GSM850 848.8 MHz Duty Cycle: 1:8.3

Probe: EX3DV4 – SN7548 ConvF(10.36,10.36,10.36)

Area Scan (81x141x1): Interpolated grid: dx=1.500 mm, dy=1.500 mm

Maximum value of SAR (interpolated) = 0.192 W/kg

Zoom Scan (5x5x7)/Cube 0: Measurement grid: dx=8mm, dy=8mm, dz=5mm

Reference Value = 2.730 V/m; Power Drift = -0.16 dB

Peak SAR (extrapolated) = 0.209 W/kg

SAR(1 g) = 0.167 W/kg; SAR(10 g) = 0.134 W/kg

Maximum value of SAR (measured) = 0.193 W/kg

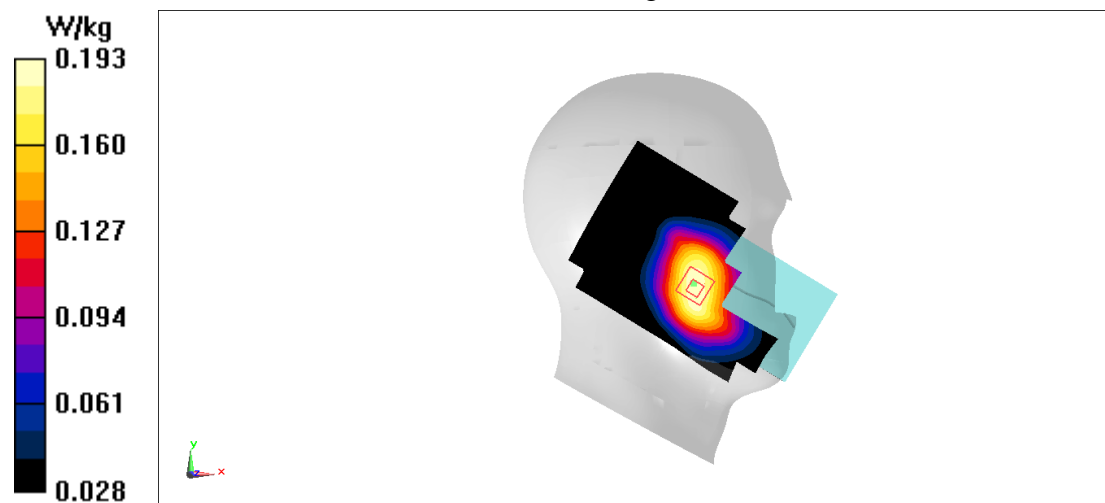


Fig A.1

GSM850_CH251 Rear 10mm

Date: 2/22/2022

Electronics: DAE4 Sn1331

Medium: head 835 MHz

Medium parameters used: $f = 848.8$ MHz; $\sigma = 0.863$ S/m; $\epsilon_r = 44.639$; $\rho = 1000$ kg/m³

Ambient Temperature: 22.5°C, Liquid Temperature: 22.3°C

Communication System: GSM850 848.8 MHz Duty Cycle: 1:4

Probe: EX3DV4 – SN7548 ConvF(10.36,10.36,10.36)

Area Scan (81x141x1): Interpolated grid: dx=1.500 mm, dy=1.500 mm

Maximum value of SAR (interpolated) = 0.268 W/kg

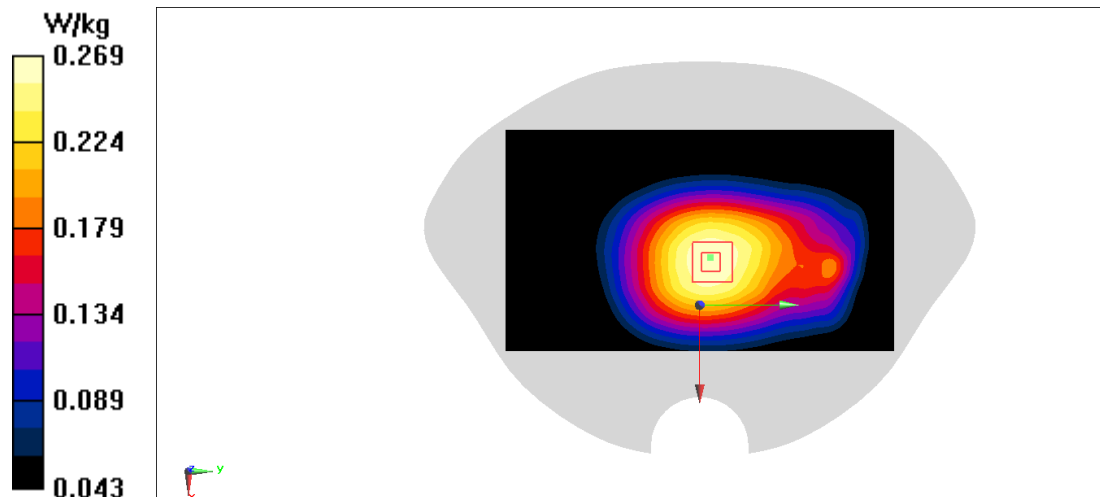
Zoom Scan (5x5x7)/Cube 0: Measurement grid: dx=8mm, dy=8mm, dz=5mm

Reference Value = 16.18 V/m; Power Drift = -0.07 dB

Peak SAR (extrapolated) = 0.297 W/kg

SAR(1 g) = 0.223 W/kg; SAR(10 g) = 0.172 W/kg

Maximum value of SAR (measured) = 0.269 W/kg

**Fig A.2**

PCS1900_CH810 Right Cheek

Date: 2/24/2022

Electronics: DAE4 Sn1331

Medium: head 1900 MHz

Medium parameters used: $f = 1910$ MHz; $\sigma = 1.489$ S/m; $\epsilon_r = 42.055$; $\rho = 1000$ kg/m³

Ambient Temperature: 22.5°C, Liquid Temperature: 22.3°C

Communication System: PCS1900 1910 MHz Duty Cycle: 1:8.3

Probe: EX3DV4 – SN7548 ConvF(7.88,7.88,7.88)

Area Scan (81x141x1): Interpolated grid: dx=1.500 mm, dy=1.500 mm

Maximum value of SAR (interpolated) = 0.319 W/kg

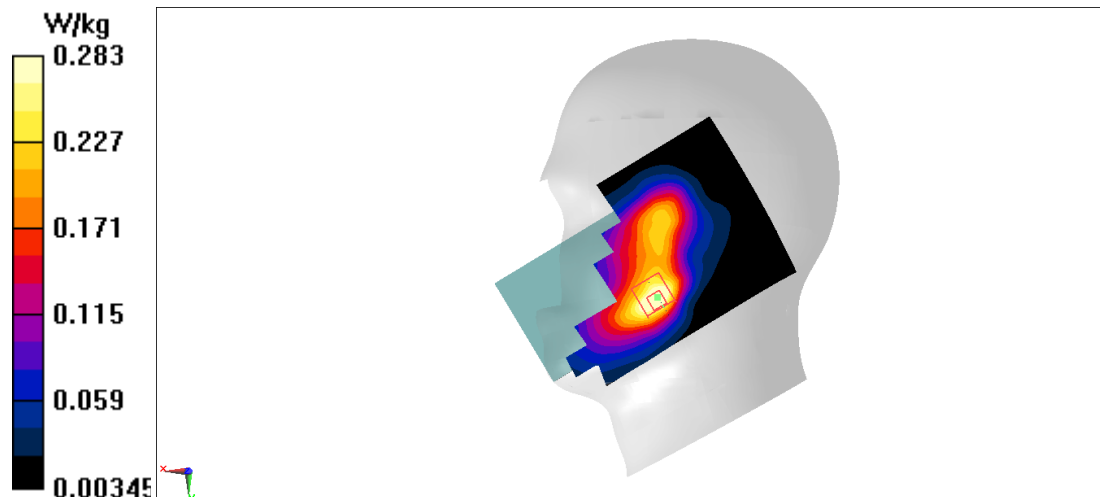
Zoom Scan (5x5x7)/Cube 0: Measurement grid: dx=8mm, dy=8mm, dz=5mm

Reference Value = 3.710 V/m; Power Drift = -0.10 dB

Peak SAR (extrapolated) = 0.350 W/kg

SAR(1 g) = 0.211 W/kg; SAR(10 g) = 0.134 W/kg

Maximum value of SAR (measured) = 0.283 W/kg

**Fig A.3**

PCS1900_CH810 Botom 10mm

Date: 2/24/2022

Electronics: DAE4 Sn1331

Medium: head 1900 MHz

Medium parameters used: $f = 1910$ MHz; $\sigma = 1.489$ S/m; $\epsilon_r = 42.055$; $\rho = 1000$ kg/m³

Ambient Temperature: 22.5°C, Liquid Temperature: 22.3°C

Communication System: PCS1900 1910 MHz Duty Cycle: 1:4

Probe: EX3DV4 – SN7548 ConvF(7.88,7.88,7.88)

Area Scan (41x101x1): Interpolated grid: dx=1.500 mm, dy=1.500 mm

Maximum value of SAR (interpolated) = 1.25 W/kg

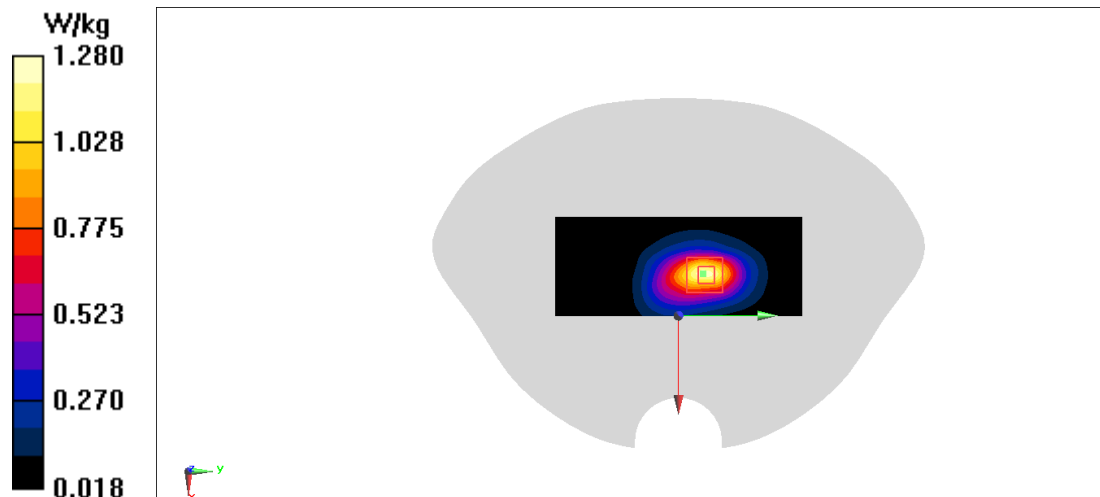
Zoom Scan (5x5x7)/Cube 0: Measurement grid: dx=8mm, dy=8mm, dz=5mm

Reference Value = 20.83 V/m; Power Drift = 0.05 dB

Peak SAR (extrapolated) = 1.55 W/kg

SAR(1 g) = 0.863 W/kg; SAR(10 g) = 0.457 W/kg

Maximum value of SAR (measured) = 1.28 W/kg

**Fig A.4**

WCDMA1900-BII_CH9538 Right Cheek

Date: 2/24/2022

Electronics: DAE4 Sn1331

Medium: head 1900 MHz

Medium parameters used: $f = 1907.6$ MHz; $\sigma = 1.487$ S/m; $\epsilon_r = 42.061$; $\rho = 1000$ kg/m³

Ambient Temperature: 22.5°C, Liquid Temperature: 22.3°C

Communication System: WCDMA1900-BII 1907.6 MHz Duty Cycle: 1:1

Probe: EX3DV4 – SN7548 ConvF(7.88,7.88,7.88)

Area Scan (81x141x1): Interpolated grid: dx=1.500 mm, dy=1.500 mm

Maximum value of SAR (interpolated) = 0.576 W/kg

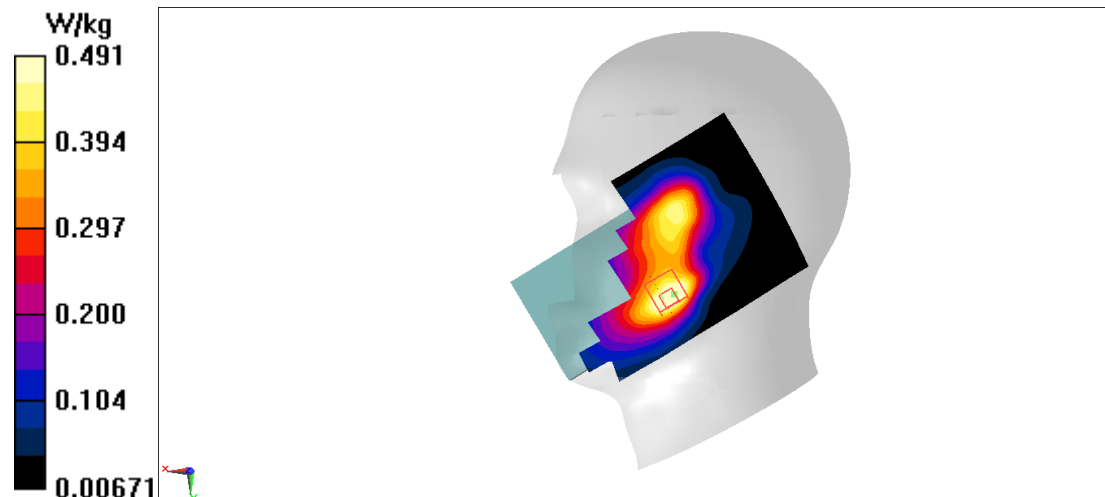
Zoom Scan (5x5x7)/Cube 0: Measurement grid: dx=8mm, dy=8mm, dz=5mm

Reference Value = 5.519 V/m; Power Drift = -0.06 dB

Peak SAR (extrapolated) = 0.623 W/kg

SAR(1 g) = 0.369 W/kg; SAR(10 g) = 0.232 W/kg

Maximum value of SAR (measured) = 0.491 W/kg

**Fig A.5**

WCDMA1900-BII_CH9538 Rear 15mm_Body worn

Date: 2/24/2022

Electronics: DAE4 Sn1331

Medium: head 1900 MHz

Medium parameters used: $f = 1907.6$ MHz; $\sigma = 1.487$ S/m; $\epsilon_r = 42.061$; $\rho = 1000$ kg/m³

Ambient Temperature: 22.5°C, Liquid Temperature: 22.3°C

Communication System: WCDMA1900-BII 1907.6 MHz Duty Cycle: 1:1

Probe: EX3DV4 – SN7548 ConvF(7.88,7.88,7.88)

Area Scan (81x141x1): Interpolated grid: dx=1.500 mm, dy=1.500 mm

Maximum value of SAR (interpolated) = 0.474 W/kg

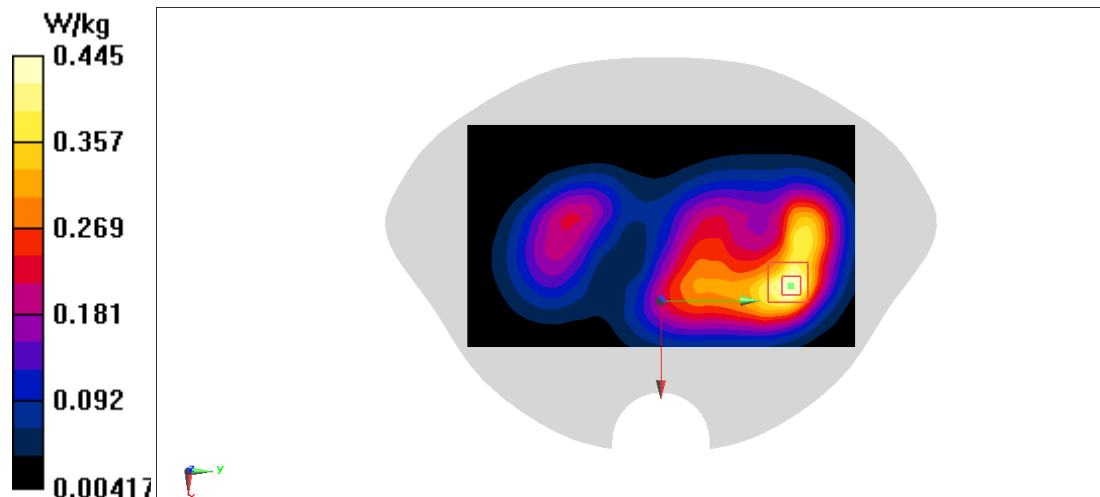
Zoom Scan (5x5x7)/Cube 0: Measurement grid: dx=8mm, dy=8mm, dz=5mm

Reference Value = 8.108 V/m; Power Drift = 0.11 dB

Peak SAR (extrapolated) = 0.542 W/kg

SAR(1 g) = 0.300 W/kg; SAR(10 g) = 0.175 W/kg

Maximum value of SAR (measured) = 0.445 W/kg

**Fig A.6**

WCDMA1900-BII_CH9262 Bottom 10mm_Hotspot

Date: 2/24/2022

Electronics: DAE4 Sn1331

Medium: head 1900 MHz

Medium parameters used: $f = 1852.4$ MHz; $\sigma = 1.446$ S/m; $\epsilon_r = 42.203$; $\rho = 1000$ kg/m³

Ambient Temperature: 22.5°C, Liquid Temperature: 22.3°C

Communication System: WCDMA1900-BII 1880 MHz Duty Cycle: 1:1

Probe: EX3DV4 – SN7548 ConvF(7.88,7.88,7.88)

Area Scan (41x101x1): Interpolated grid: dx=1.500 mm, dy=1.500 mm

Maximum value of SAR (interpolated) = 1.14 W/kg

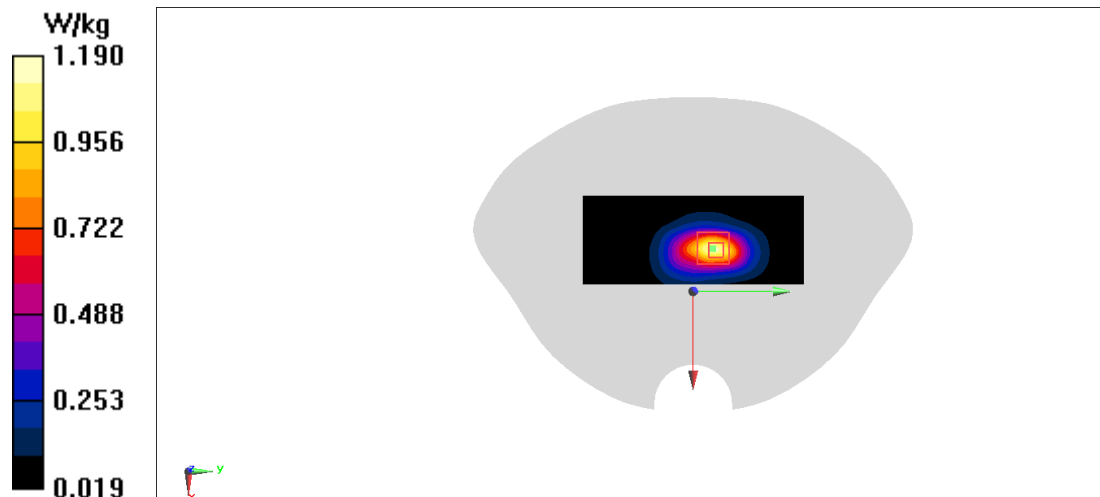
Zoom Scan (5x5x7)/Cube 0: Measurement grid: dx=8mm, dy=8mm, dz=5mm

Reference Value = 20.15 V/m; Power Drift = 0.06 dB

Peak SAR (extrapolated) = 1.41 W/kg

SAR(1 g) = 0.781 W/kg; SAR(10 g) = 0.413 W/kg

Maximum value of SAR (measured) = 1.19 W/kg

**Fig A.7**

WCDMA1700-BIV_CH1513 Left Cheek

Date: 2/23/2022

Electronics: DAE4 Sn1331

Medium: head 1800 MHz

Medium parameters used: $f = 1752.6$ MHz; $\sigma = 1.375$ S/m; $\epsilon_r = 42.371$; $\rho = 1000$ kg/m³

Ambient Temperature: 22.5°C, Liquid Temperature: 22.3°C

Communication System: WCDMA1700-BIV 1752.6 MHz Duty Cycle: 1:1

Probe: EX3DV4 – SN7548 ConvF(8.14,8.14,8.14)

Area Scan (81x141x1): Interpolated grid: dx=1.500 mm, dy=1.500 mm

Maximum value of SAR (interpolated) = 0.280 W/kg

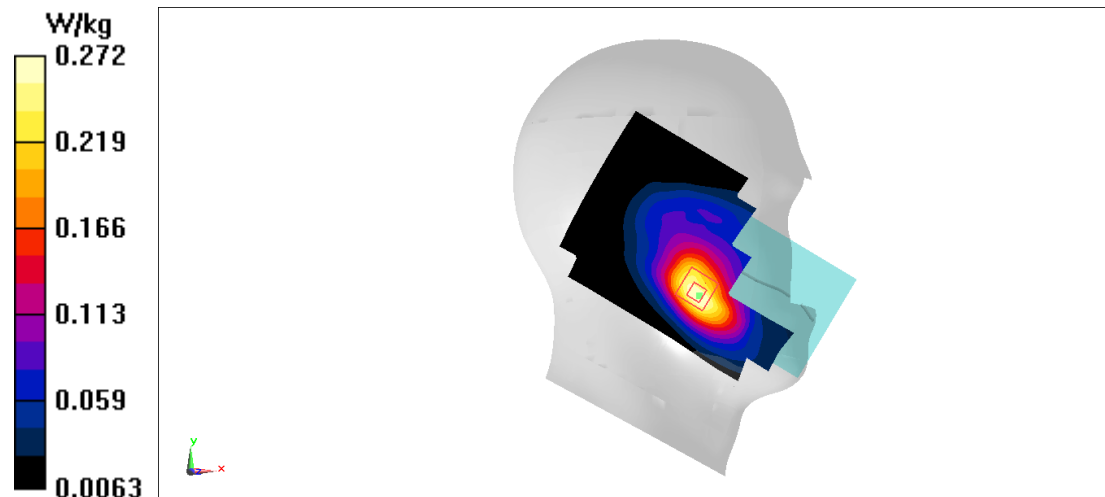
Zoom Scan (5x5x7)/Cube 0: Measurement grid: dx=8mm, dy=8mm, dz=5mm

Reference Value = 3.892 V/m; Power Drift = -0.07 dB

Peak SAR (extrapolated) = 0.308 W/kg

SAR(1 g) = 0.203 W/kg; SAR(10 g) = 0.130 W/kg

Maximum value of SAR (measured) = 0.272 W/kg

**Fig A.8**

WCDMA1700-BIV_CH1312 Rear 15mm_Body worn

Date: 2/23/2022

Electronics: DAE4 Sn1331

Medium: head 1800 MHz

Medium parameters used: $f = 1712.4$ MHz; $\sigma = 1.348$ S/m; $\epsilon_r = 42.422$; $\rho = 1000$ kg/m³

Ambient Temperature: 22.5°C, Liquid Temperature: 22.3°C

Communication System: WCDMA1700-BIV 1712.4 MHz Duty Cycle: 1:1

Probe: EX3DV4 – SN7548 ConvF(8.14,8.14,8.14)

Area Scan (81x141x1): Interpolated grid: dx=1.500 mm, dy=1.500 mm

Maximum value of SAR (interpolated) = 0.406 W/kg

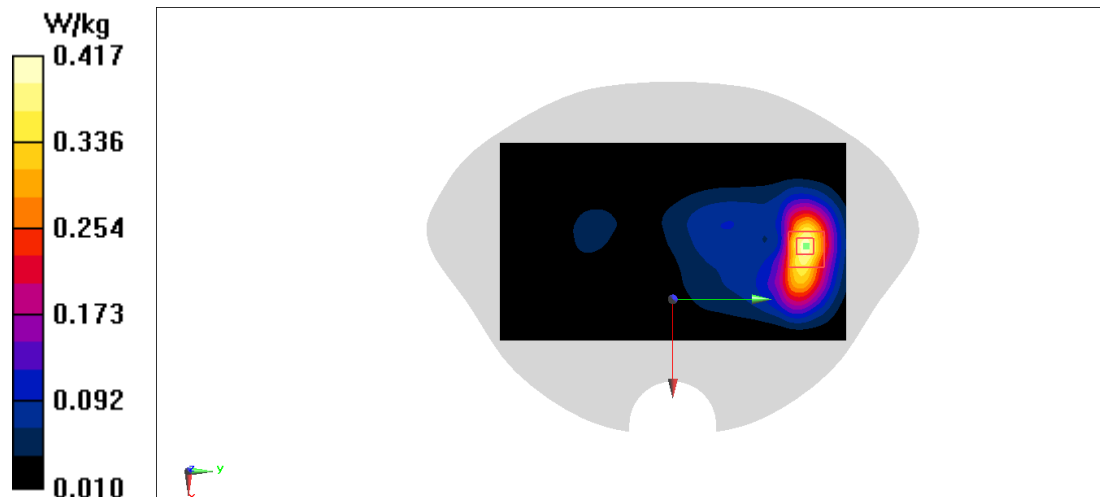
Zoom Scan (5x5x7)/Cube 0: Measurement grid: dx=8mm, dy=8mm, dz=5mm

Reference Value = 4.663 V/m; Power Drift = 0.09 dB

Peak SAR (extrapolated) = 0.492 W/kg

SAR(1 g) = 0.296 W/kg; SAR(10 g) = 0.171 W/kg

Maximum value of SAR (measured) = 0.417 W/kg

**Fig A.9**