

# TCL 30<sub>T</sub>

T603DL

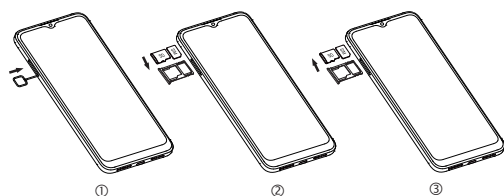
## Quick Start Guide

Thank you for choosing TCL. This booklet helps you get started with your new device. For more information about your phone or to download the complete user manual version, please visit [tcl.com/us](http://tcl.com/us)

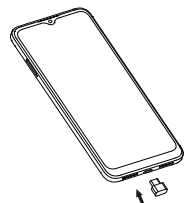
## Phone Setup

### Installing or removing the SIM card and microSD™ card

- Your phone already has a SIM card installed. If you need to change or remove your SIM card, follow the steps below.
- Use the provided SIM pin to open the SIM tray.
  - To install SIM/microSD™ card, place the SIM/microSD™ card with the chip facing down into the SIM card tray and then slide it into its slot.
  - To remove SIM/microSD™ card, push up on the chip side of the cards inside the SIM tray.



### Charging the battery



It is advised that you fully charge your battery before first use (100%). Connect the charger to your phone and an outlet. Charging status is indicated by the percentage on screen while the phone is powered off. The percentage increases as the phone is charged.

### Power on your phone

Hold down the **Power** key until the phone powers on, unlock your phone (screen lock, face unlock) if necessary and confirm. The Home screen is displayed.

If you do not know your PIN/password or pattern, or if you have forgotten it, contact your service provider. Do not leave your PIN/password or pattern, with your phone. Store this information in a safe place when not in use.

#### Set up your phone for the first time

The first time you power on the phone, you'll be able to select your language, select a network, log in to your Google Account and Google Services, and select a screen lock option.

### Power off your phone

Hold down the **Power** key from any screen until the phone options appear, select **Power off**.

### Personalize your Home screen

#### Add

You can touch and hold a folder, an application or a widget to activate the Move mode and drag the item to any Home screen as you prefer.

#### Reposition

Touch and hold the item to be repositioned to activate the Move mode, drag the item to the desired position and then release. You can move items both on the Home screen and the favorite tray. Hold the icon on the left or right edge of the screen to drag the item to another Home screen.

#### Remove

Touch and hold the item to be removed to activate the Move mode, drag the item up to the top of the Remove icon, and release after the item turns grey.

#### Create folders

To improve the organization of items (shortcuts or applications) on the Home screen and the favorite tray, you can add them to a folder by stacking one item on top of another. To rename a folder, open it and touch the folder's title bar to input the new name.

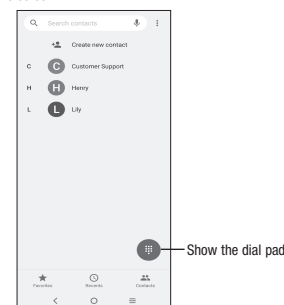
#### Wallpaper customization

Touch and hold the Home screen then touch **Wallpapers** to customize wallpaper.

## Phone

### Placing a call

Touch **Phone** from the Home screen.



Enter the desired number from the keyboard directly, or select one of the following:

- Access frequently called or favorite contacts in **Favorites**.
- View recently called numbers and contacts in **Recents**.
- Choose a saved contact in **Contacts**.

Touch to place the call.

To hang up a call, touch.

### Answering or rejecting a call

When you receive a call:

- Swipe up to answer.
- Swipe down to reject.
- Swipe to reject the call by sending a preset message.

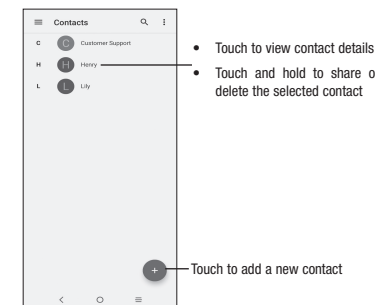
To mute the ringtone volume of an incoming call, press the **Volume up/down key**.

## Contacts

**Contacts** enables quick and easy access to the people you want to reach. You can view and create contacts on your phone.

To access this feature, swipe up on the Home screen, then select **Contacts**.

### Adding a contact



- Touch to view contact details
- Touch and hold to share or delete the selected contact

Touch to add a new contact

### Editing a contact

To edit contact information, touch in the contact details screen. When finished, touch **SAVE**.

### Importing, exporting, and sharing contacts

From the Contacts screen, touch to open the options menu, touch **Settings > Import/Export**, then select to import/export contacts from/to your SIM card, phone, micro SD card, etc.

Share a single contact or multiple contacts with others by sending the contact's vCard to them via Bluetooth, Gmail, etc.

Touch and hold the contact (s) you want to share, touch.

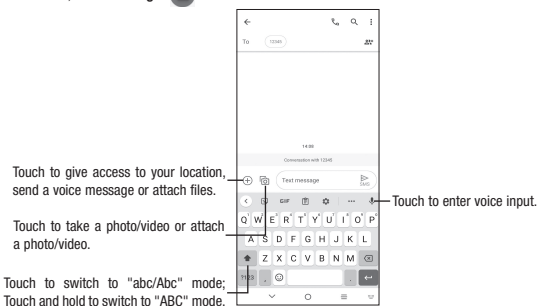


English - CJB2J00LCAAA  
Printed in China

## Messages

You can create, edit, and receive SMS and MMS with this phone.

To access this feature, touch **Messages** from the Home screen.



Touch to give access to your location, send a voice message or attach files.

Touch to take a photo/video or attach a photo/video.

Touch to switch to "abc/Abc" mode; Touch and hold to switch to "ABC" mode.

### Sending a message

Enter the mobile phone number of the recipient in the **To** bar or select a contact, then touch the **Text message** bar to type the text of the message. When finished, touch **SEND** to send the text message.

An SMS of more than 160 characters will be split and sent as multiple SMS. A counter will be displayed on the right of the text box to remind you of how many characters can be entered in one message. Specific letters (accent) will also increase the size of the SMS, this may cause multiple SMS to be sent to your recipient.

### Sending a multimedia message

MMS enables you to send video clips, images, photos, animations, slides and sounds to other compatible phones and e-mail addresses.

An SMS will be converted to MMS automatically when media files (image, video, audio, slides, etc.) are attached or subject or email addresses are added.

## Gmail

In addition to your Gmail account, your phone supports external POP3, IMAP or Exchange email accounts.

To access this feature, swipe up on Home screen then select **Gmail**.

### To create and send emails

- Touch from the Inbox screen.
- Enter recipient(s) email address(es) in the **To:** field.
- If necessary, tap next to the **To:** field to add Cc/Bcc to the message.
- Enter the subject and the content of the message.
- Tap to add an attachment.
- Tap to send.

## Camera & Video

Your phone's camera is equipped with multiple modes for taking photos and videos. From the home screen, touch to access.

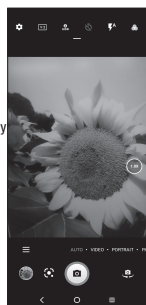
### To take a picture:

The screen acts as the viewfinder. First, position the object or landscape in the viewfinder, touch the screen to focus if necessary. Touch to capture, the photo will be automatically saved. You can also touch and hold to take burst shots.

### To take a video:

Touch **VIDEO** to change the camera mode to video. Touch to start video recording. Touch the left part of this icon to take a picture during video recording.

Touch the right part of this icon to pause video recording and touch to continue. Touch to stop recording. The video will be automatically saved.



## Security

Swipe up on the Home screen, then touch **Settings > Security & biometrics**.

Enable your lock/unlock method: Swipe, Pattern, PIN, Password, or Face Unlock.

Face Unlock will unlock your phone using the front camera to register your face.

**Note:** facial recognition methods may not be as secure as Pattern, Pin, or Password locks.

## Data backup

This phone enables you to back up your phone's settings and other application data to the Google Server, with your Google Account.

If you replace your phone, the settings and data you've backed up are restored onto the new phone the first time you sign in with your Google Account.

To activate this function:

- Swipe up on **Home screen > Settings > System > Backup**.

## Factory data reset

To activate factory data reset:

- Swipe up on **Home screen > Settings > System > Reset > Erase all data (factory reset)**.
- Tap **Erase all data**.

Resetting the phone will erase all of your personal data from internal phone storage, including information about your Google Account, any other accounts on your phone, your system and application settings, and any downloaded applications. If you reset the phone in this way, you're prompted to re-enter the same kind of information as when you first set up your device.

If you are unable to power on your phone, there is another method to perform a factory data reset by pressing the Power key and the Volume up key at the same time until the screen lights up.

## Getting connected

Your phone can connect to the Internet using 4G networks or Wi-Fi, whichever is convenient and available.

### Network

The first time you turn on your phone, it will automatically configure your 4G network service.

To check the network connection you are using, swipe up on the **Home screen > Settings > Mobile network**.

### Wi-Fi

Using Wi-Fi, you can connect to the Internet when your phone is within the range of a wireless network. Wi-Fi can be used on your phone even without a SIM card inserted.

#### To turn Wi-Fi on and connect to a wireless network

- Swipe up on the Home screen, then touch **Settings > Wi-Fi**.
- Touch the switch next to Wi-Fi to turn Wi-Fi on or off.
- Touch Wi-Fi, the detailed information of detected Wi-Fi networks is displayed in the Wi-Fi networks section.
- Touch a Wi-Fi network to connect. If the network you selected is secured, you are required to enter a password or other credentials (you may contact the network carrier for details). When finished, touch **CONNECT**.

### Connecting to Bluetooth devices

Bluetooth is a short-range wireless communication technology that you can use to exchange data or connect to other Bluetooth devices for various uses.

#### To turn on Bluetooth

- Swipe up on the Home screen, then touch **Settings > Bluetooth**.
- Touch the switch to activate/deactivate this function.

#### To pair/connect your phone with a Bluetooth device

- Touch **Settings > Bluetooth > + Pair new device**.
- Touch a Bluetooth device you want to pair your phone with from the list.
- In the dialog that pops up, touch **PAIR** to confirm.
- If the pairing is successful, your phone will be connected to the device.

#### To disconnect/unpair from a Bluetooth device

- Touch next to the device name
- Touch and **FORGET DEVICE** to confirm

## Status bar

From the status bar, you can view both phone status and notification information.

### Status icons

	GSM		Vibrate mode
	WCDMA		Alarm is set
	LTE		Connected to a Wi-Fi network
	Signal strength		Speakerphone is on
	No signal		No SIM card inserted
	Airplane mode		Battery is charging
	Bluetooth connected		Battery is low
	Headset connected		Battery is partially drained
	GPS is on		Battery is full

### Notification icons

	New Gmail message		Missed call
	New text or multimedia message		Connect to open Wi-Fi network
	Upcoming event		Uploading data
	Downloading data		System update available

Regulatory Agency Information	
FCC ID	2ACCJH143
Max. SAR (W/kg) - Head	0.52 W/Kg
Max. SAR (W/kg) - Body	1.13 W/Kg
HAC (Hearing Aid Compatible) & Rating	M4/T4