

# alcatel 3

## QUICK START GUIDE

SAVE  
PAPER  
SAVE  
TREES

PLEASE CONSIDER THE  
ENVIRONMENT BEFORE PRINTING  
[us.alcatelmobile.com](http://us.alcatelmobile.com)



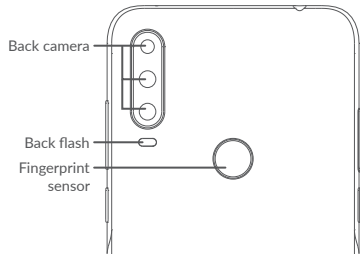
English - CJB2EM102AAA  
Printed in China

5029E

# Your Mobile

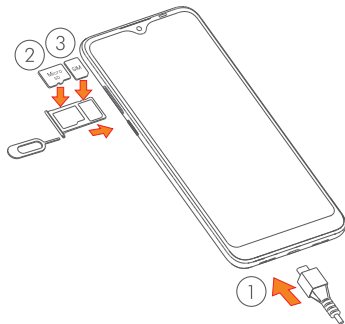
## Keys and connectors





## Getting started

- ① Charge the battery
- ② Insert or remove the microSD card.
- ③ Insert or remove the SIM card.

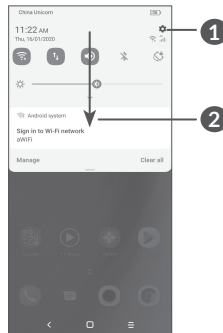


2

# Home screen

You can bring all of the items (applications, shortcuts, folders) that you use most frequently to your Home screen for quick access.

Touching the **Home** button always takes you back to the main Home screen.




① : Open **Settings**, to view the full list of settings.

② : Touch and drag down to open the Notification panel.



3

# Phone call

## Making a call

Enter the desired number from the keyboard and touch  to make a call.

## Answering a call

When you receive a call, swipe  to the right to answer or swipe  to the left to reject.

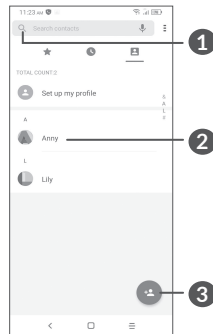


- 1** : Reject by SMS
- 2** : Reject by Alarm
- 3** : Answer the call
- 4** : Reject the call

4

# Contacts

You can view and create contacts on your phone and synchronize these with your Gmail contacts or other applications on the web or on your phone.



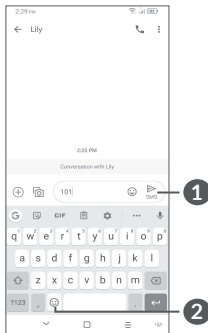
- 1** : Search in **Contacts**
- 2** : Open the Quick contact panel  
Long press to share or delete the selected contact
- 3** : Add new contact

5

# Messaging

You can create, edit, and receive SMS and MMS.

An SMS will be converted to MMS automatically when media files (image, video, audio, slides, etc.) are attached or subject or email addresses are added.

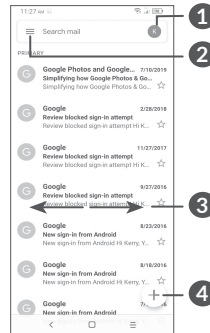


**1** : Send the text message

**2** : Insert emoticons

# Gmail

The first time you set up your phone, you can select to use an existing Gmail account or to create a new one.



**1** : Account information

**2** : See options and settings

**3** : Swipe right or left to archive the email

**4** : Create an email

# Help

To get help:

- **View user manual and FAQ**

[www.alcatelmobile.com](http://www.alcatelmobile.com)

- **Update your phone's software**

Go to **Settings > System > System Update** to check software updates.

- **Back up your personal data**

Go to **Settings > System > Backup > Back up to Google Drive** and turn it on.

- **Reset your phone**

Go to **Settings > System > Reset > Factory data reset**, and then touch to reset your Phone.

# Support

1. Enter from your Smartphone / Tablet to the application: Support centre
2. Check our frequently asked questions or chat with us through <https://www.alcatelmobile.com> in the Support section.
3. Call the Call Center Locate your number, below:

Argentina: 8004447361

Australia: 1800218730

Canada: 8558446058

Chile: 12300209025

Colombia: 18005183882

Ecuador: 800000635

Mexico: 8001124682

New Zealand: 0800451708

Peru: 80055639

Dominican Republic: 18002039552

Uruguay: 40190752

USA: 18553680829

Venezuela: 8001362017