

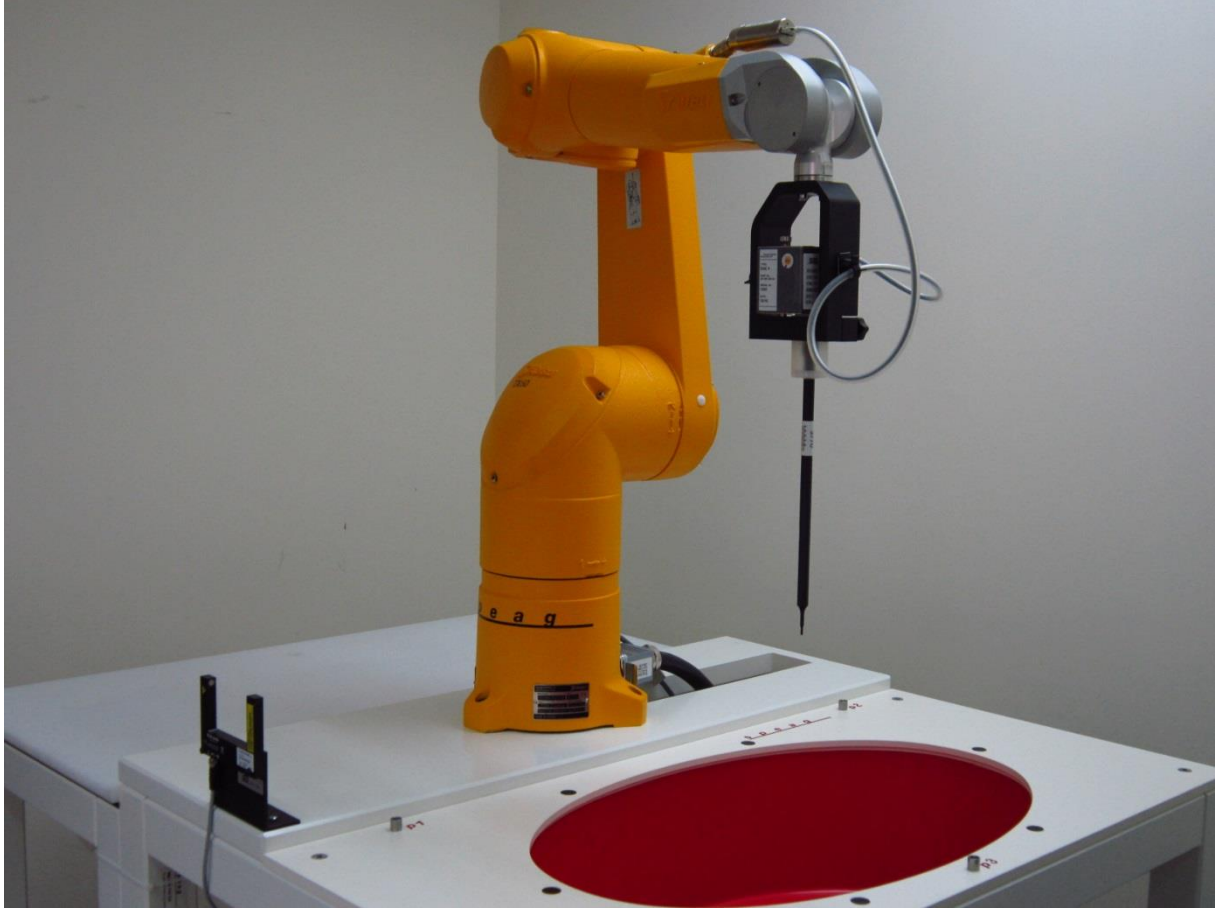


Appendix D

Photographs

| |
|--|
| 1. SAR measurement System |
| 2. Photographs of Tissue Simulate Liquid |
| 3. Photographs of EUT test position |
| 4. EUT Constructional Details |

1. SAR measurement System



2. Photographs of Tissue Simulate Liquid

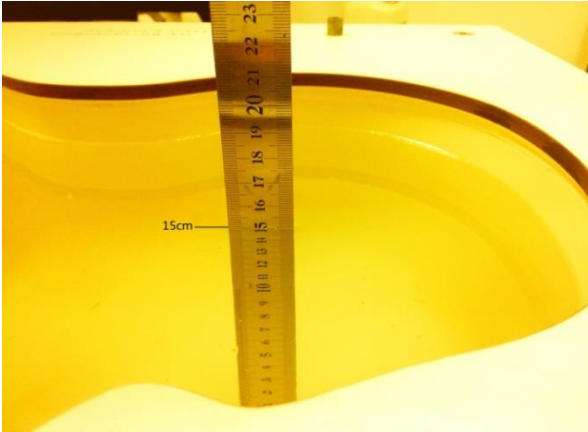
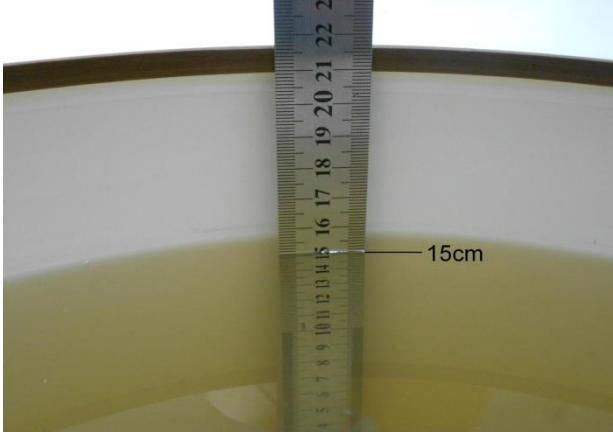
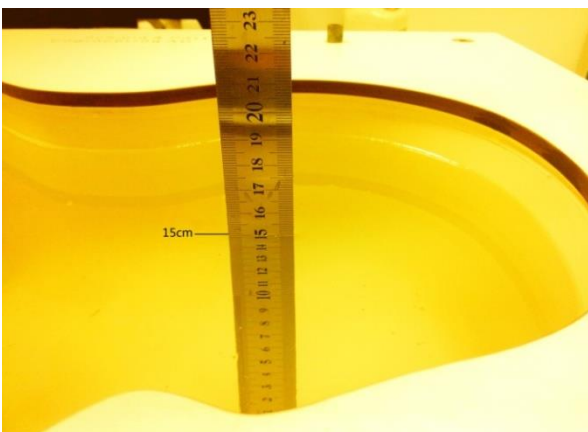
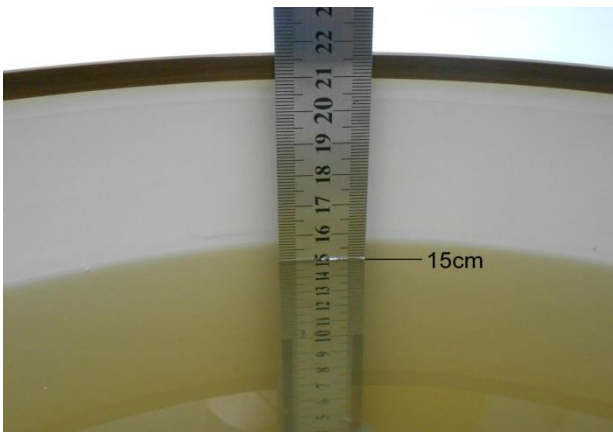
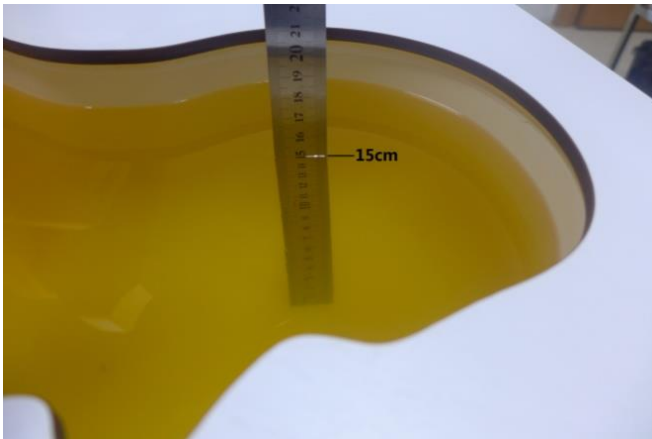

| | |
|---|--|
| <p>Photo 1: Tissue Simulant Liquid for Head 750</p> | <p>Photo 2: Tissue Simulant Liquid for Body 750</p> |
|  |  |
| <p>Photo 3: Tissue Simulant Liquid for Head 835</p> | <p>Photo 4: Tissue Simulant Liquid for Body 835</p> |
|  |  |
| <p>Photo 5: Tissue Simulant Liquid for Head 1750</p> | <p>Photo 6: Tissue Simulant Liquid for Body 1750</p> |
|  |  |

Photo 7: Tissue Simulant Liquid for Head 1900

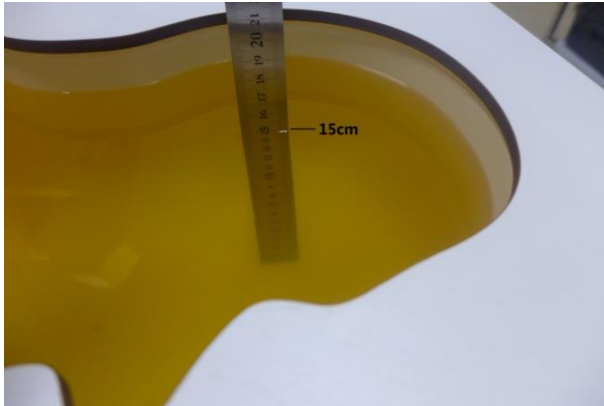


Photo 8: Tissue Simulant Liquid for Body 1900



Photo 9: Tissue Simulant Liquid for Head 2450

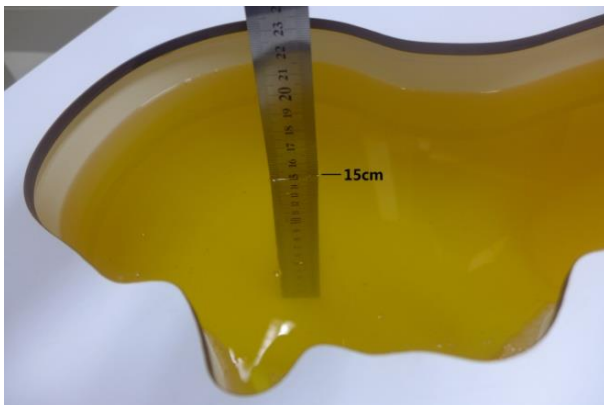
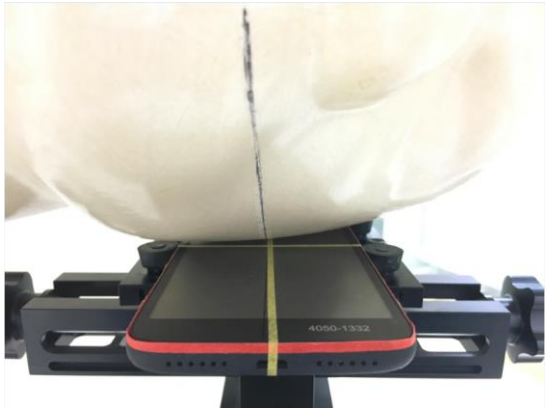
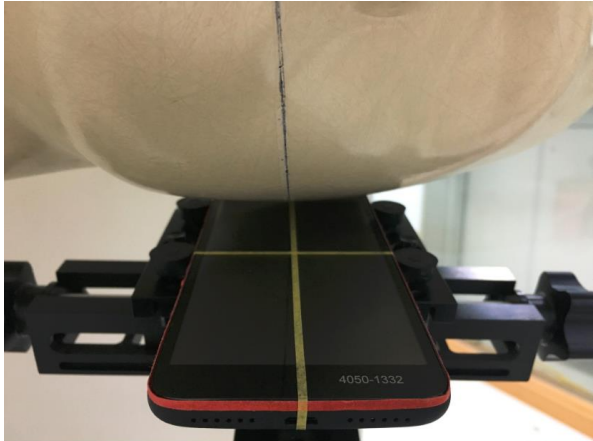
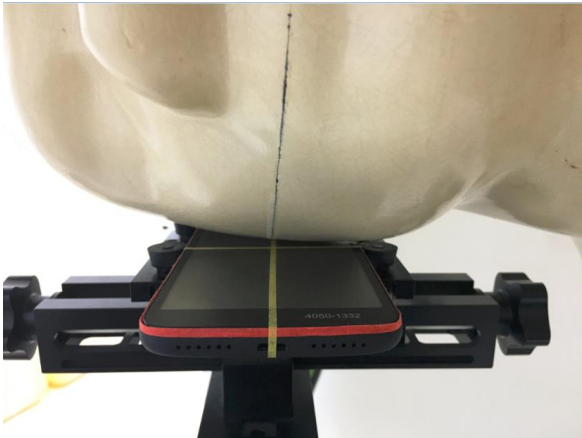
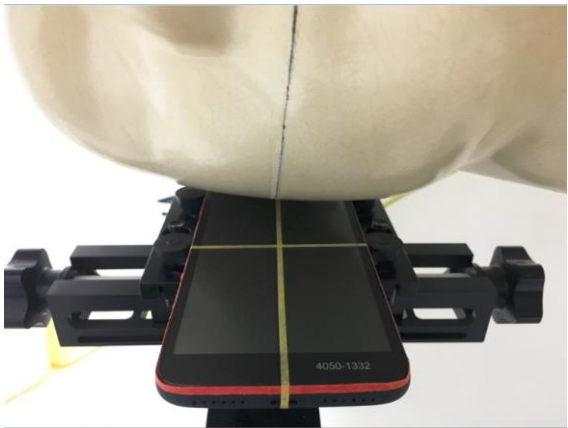

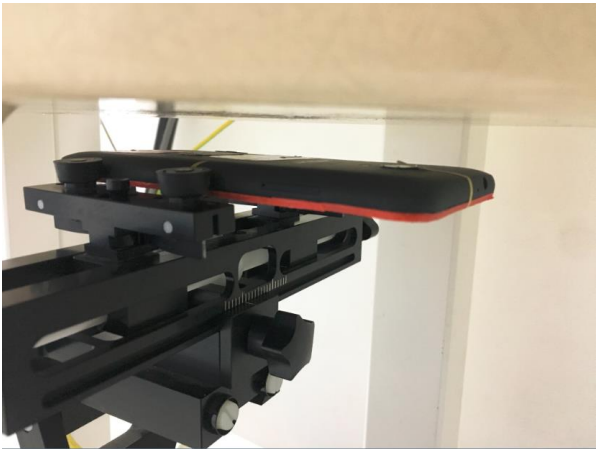


Photo 10: Tissue Simulant Liquid for Body 2450



3. Photographs of EUT test position

| | |
|---|--|
| <p>Photo 11: Left cheek</p> | <p>Photo 12: Left tilted</p> |
|  |  |
| <p>Photo 13: Right cheek</p> | <p>Photo 14: Right tilted</p> |
|  |  |
| <p>Photo 15: Front side 15mm</p> | <p>Photo 16: Back side 15mm</p> |
|  |  |

| | |
|---|--|
| <p>Photo 17: Front side 10mm</p> | <p>Photo 18: Back side 10mm</p> |
|  |  |
| <p>Photo 19: Left side 10mm</p> | <p>Photo 20: Right side 10mm</p> |
|  |  |
| <p>Photo 21: Top side 10mm</p> | <p>Photo 22: Bottom side 10mm</p> |
|  |  |

4. EUT Constructional Details

