

alcatel 1

QUICK START GUIDE

SAVE
PAPER
SAVE
TREES

PLEASE CONSIDER THE
ENVIRONMENT BEFORE PRINTING
us.alcatelmobile.com



English - CJB2CP0B6AAA
Printed in China

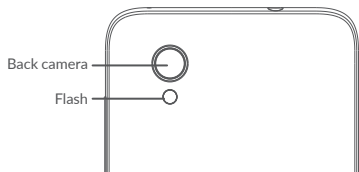
50330



Your Mobile

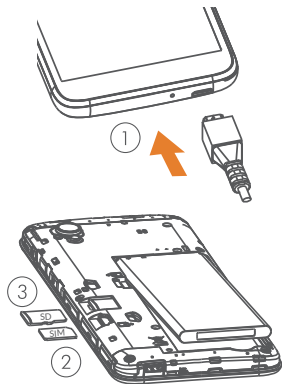
Keys and connectors





Getting started

- ① Charge the battery
- ② Insert the SIM card
- ③ Insert the microSD card (Sold separately).

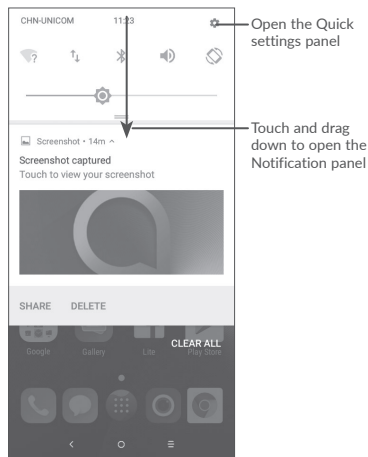


2

Home screen

You can bring all of the items (applications, shortcuts, folders, and widgets) that you use most frequently to your Home screen for quick access.


Touching the **Home** button always takes you back to the main Home screen.





3

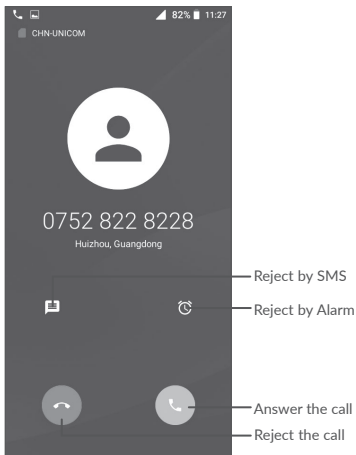
Phone call

Making a call

Enter the desired number from the keyboard and touch  to make a call.

Answering a call

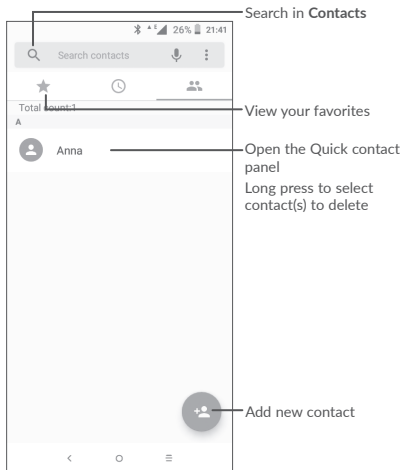
When you receive a call, touch  to accept, or  to reject.



4

Contacts

You can view and create contacts on your phone by clicking the Add new contact icon (see below). Sign in to Google to access your Contacts from your Google account.

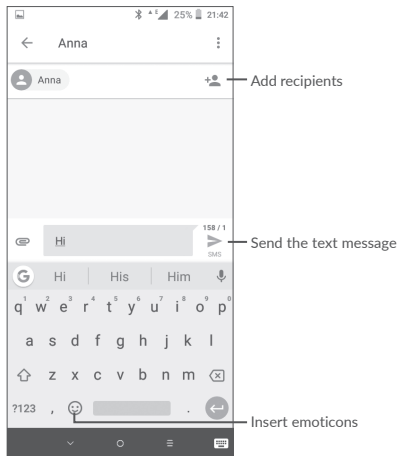


5

Messaging

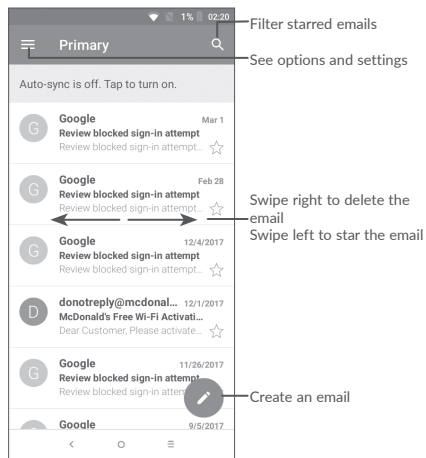
You can create, edit, and receive SMS and MMS.

An SMS will be converted to MMS automatically when media files (image, video, audio, slides, etc.) are attached or subject or email addresses are added (Note: Mobile data is required to send MMS).



Gmail

The first time you set up your phone, you can select to use an existing Gmail account or to create a new one.



Help

To get help:

- **View user manual and FAQ**

us.alcatelmobile.com

- **Update your phone's software**

Open the **Settings > System > About Phone > Updates** application to check software updates.

- **Back up your personal data**

Go to **Settings > System > Backup > Back up to Google Drive**. and turn it on.

- **Reset your phone**

Go to **Settings > System > Reset options**, and then touch to reset you Phone.