



SAR TEST REPORT

No. I18Z60563-SEM01

For

TCL Communication Ltd.

LTE / UMTS / GSM mobile phone

Model Name: 5033J

With

Hardware Version: 05

Software Version: v7LT2

FCC ID: 2ACCJH089

Issued Date: 2018-5-11



Note:

The test results in this test report relate only to the devices specified in this report. This report shall not be reproduced except in full without the written approval of CTTL.

The report must not be used by the client to claim product certification, approval, or endorsement by NVLAP, NIST, or any agency of the U.S. Government.

Test Laboratory:

CTTL, Telecommunication Technology Labs, CAICT

No. 51, Xueyuan Road, Haidian District, Beijing, P. R. China 100191.

Tel:+86(0)10-62304633-2512, Fax:+86(0)10-62304633-2504

Email: ctl_terminals@caict.ac.cn, website: www.caict.ac.cn



REPORT HISTORY

Report Number	Revision	Issue Date	Description
I18Z60563-SEM01	Rev.0	2018-5-11	Initial creation of test report

TABLE OF CONTENT

1	TEST LABORATORY	5
1.1	TESTING LOCATION	5
1.2	TESTING ENVIRONMENT	5
1.3	PROJECT DATA	5
1.4	SIGNATURE	5
2	STATEMENT OF COMPLIANCE	6
3	CLIENT INFORMATION	8
3.1	APPLICANT INFORMATION	8
3.2	MANUFACTURER INFORMATION	8
4	EQUIPMENT UNDER TEST (EUT) AND ANCILLARY EQUIPMENT (AE)	9
4.1	ABOUT EUT	9
4.2	INTERNAL IDENTIFICATION OF EUT USED DURING THE TEST	9
4.3	INTERNAL IDENTIFICATION OF AE USED DURING THE TEST	9
5	TEST METHODOLOGY	10
5.1	APPLICABLE LIMIT REGULATIONS	10
5.2	APPLICABLE MEASUREMENT STANDARDS	10
6	SPECIFIC ABSORPTION RATE (SAR)	11
6.1	INTRODUCTION	11
6.2	SAR DEFINITION	11
7	TISSUE SIMULATING LIQUIDS	12
7.1	TARGETS FOR TISSUE SIMULATING LIQUID	12
7.2	DIELECTRIC PERFORMANCE	12
8	SYSTEM VERIFICATION	19
8.1	SYSTEM SETUP	19
8.2	SYSTEM VERIFICATION	20
9	MEASUREMENT PROCEDURES	21
9.1	TESTS TO BE PERFORMED	21
9.2	GENERAL MEASUREMENT PROCEDURE	23
9.3	WCDMA MEASUREMENT PROCEDURES FOR SAR	24
9.4	SAR MEASUREMENT FOR LTE	25
9.5	BLUETOOTH & WI-FI MEASUREMENT PROCEDURES FOR SAR	25
9.6	POWER DRIFT	26
10	AREA SCAN BASED 1-G SAR	26
10.1	REQUIREMENT OF KDB	26
10.2	FAST SAR ALGORITHMS	26
11	CONDUCTED OUTPUT POWER	27



11.1	GSM MEASUREMENT RESULT	27
11.2	WCDMA MEASUREMENT RESULT.....	28
11.3	LTE MEASUREMENT RESULT	29
11.4	WI-FI AND BT MEASUREMENT RESULT	40
12	SIMULTANEOUS TX SAR CONSIDERATIONS	42
12.1	INTRODUCTION	42
12.2	TRANSMIT ANTENNA SEPARATION DISTANCES	42
12.3	SAR MEASUREMENT POSITIONS	43
12.4	STANDALONE SAR TEST EXCLUSION CONSIDERATIONS.....	43
13	EVALUATION OF SIMULTANEOUS.....	44
14	SAR TEST RESULT	45
14.1	SAR RESULTS	45
14.2	FULL SAR	62
14.3	WLAN EVALUATION	63
15	SAR MEASUREMENT VARIABILITY.....	66
16	MEASUREMENT UNCERTAINTY	67
16.1	MEASUREMENT UNCERTAINTY FOR NORMAL SAR TESTS (300MHZ~3GHZ)	67
16.2	MEASUREMENT UNCERTAINTY FOR NORMAL SAR TESTS (3~6GHZ).....	68
16.3	MEASUREMENT UNCERTAINTY FOR FAST SAR TESTS (300MHZ~3GHZ).....	69
16.4	MEASUREMENT UNCERTAINTY FOR FAST SAR TESTS (3~6GHZ).....	70
17	MAIN TEST INSTRUMENTS.....	72
ANNEX A	GRAPH RESULTS.....	73
ANNEX B	SYSTEM VERIFICATION RESULTS	105
ANNEX C	SAR MEASUREMENT SETUP	118
ANNEX D	POSITION OF THE WIRELESS DEVICE IN RELATION TO THE PHANTOM	124
ANNEX E	EQUIVALENT MEDIA RECIPES.....	127
ANNEX F	SYSTEM VALIDATION	128
ANNEX G	PROBE CALIBRATION CERTIFICATE.....	129
ANNEX H	DIPOLE CALIBRATION CERTIFICATE	140
ANNEX I	DAE CALIBRATION CERTIFICATE.....	188
ANNEX J	SPOT CHECK	193
ANNEX K	ACCREDITATION CERTIFICATE	220

1 Test Laboratory

1.1 Testing Location

Company Name:	CTTL(Shouxiang)
Address:	No. 51 Shouxiang Science Building, Xueyuan Road, Haidian District, Beijing, P. R. China100191

1.2 Testing Environment

Temperature:	18°C~25 °C,
Relative humidity:	30%~ 70%
Ground system resistance:	< 0.5 Ω
Ambient noise & Reflection:	< 0.012 W/kg

1.3 Project Data

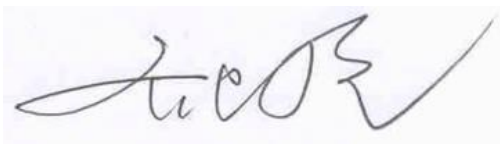
Project Leader:	Qi Dianyuan
Test Engineer:	Lin Xiaojun
Testing Start Date:	April 11, 2018
Testing End Date:	April 16, 2018

1.4 Signature



Lin Xiaojun

(Prepared this test report)



Qi Dianyuan

(Reviewed this test report)



Lu Bingsong

Deputy Director of the laboratory
(Approved this test report)

2 Statement of Compliance

This EUT is a variant product and the report of original sample is No.I18Z60562-SEM01. According to the client request, we share the test results of original sample and do spot check. The results of spot check are presented in the annex J.

The maximum results of SAR found during testing for TCL Communication Ltd. LTE / UMTS / GSM mobile phone 5033J is as follows:

Table 2.1: Highest Reported SAR (1g)

Exposure Configuration	Technology Band	Highest Reported SAR 1g (W/Kg)	Equipment Class
Head (Separation Distance 0mm)	GSM850	0.39	PCE
	PCS1900	0.38	
	WCDMA1900-BII	0.23	
	WCDMA1700-BIV	0.46	
	WCDMA850-BV	0.39	
	LTE1900-FDD2	0.16	
	LTE1700-FDD4	0.33	
	LTE850-FDD5	0.36	
	LTE2500-FDD7	0.20	
	LTE700-FDD12	0.22	
	LTE750-FDD13	0.34	
	WLAN 2.4 GHz	0.99	DTS
Hotspot (Separation Distance 10mm)	GSM850	0.56	PCE
	PCS1900	1.09	
	WCDMA1900-BII	1.19	
	WCDMA1700-BIV	1.18	
	WCDMA850-BV	0.48	
	LTE1900-FDD2	1.19	
	LTE1700-FDD4	1.16	
	LTE850-FDD5	0.45	
	LTE2500-FDD7	1.19	
	LTE700-FDD12	0.32	
	LTE750-FDD13	0.49	
	WLAN 2.4 GHz	0.19	DTS

The SAR values found for the Mobile Phone are below the maximum recommended levels of 1.6 W/Kg as averaged over any 1g tissue according to the ANSI C95.1-1992.

For body worn operation, this device has been tested and meets FCC RF exposure guidelines when used with any accessory that contains no metal and which provides a minimum separation distance of 10 mm between this device and the body of the user. Use of other accessories may not ensure compliance with FCC RF exposure guidelines.

The EUT battery must be fully charged and checked periodically during the test to ascertain uniform power output.

The measurement together with the test system set-up is described in annex C of this test report. A

detailed description of the equipment under test can be found in chapter 4 of this test report. The highest reported SAR value is obtained at the case of **(Table 2.1)**, and the values are: **1.19 W/kg (1g)**.

Table 2.2: The sum of reported SAR values for main antenna and WiFi

	Position	Main antenna	WiFi	Sum
Highest reported SAR value for Head	Right hand, Touch cheek	0.39	0.99	1.38
Highest reported SAR value for Body	Rear	1.18	0.19	1.37

Table 2.3: The sum of reported SAR values for main antenna and BT

	Position	Main antenna	BT	Sum
Maximum reported SAR value for Head	Right hand, Touch cheek	0.39	0.21	0.60
Maximum reported SAR value for Body	Rear	1.18	0.10	1.28

[1] - Estimated SAR for Bluetooth (see the table 13.3)

According to the above tables, the highest sum of reported SAR values is **1.38 W/kg (1g)**. The detail for simultaneous transmission consideration is described in chapter 13.

3 Client Information

3.1 Applicant Information

Company Name:	TCL Communication Ltd.
Address /Post:	7/F, Block F4, TCL Communication Technology Building, TCL International E City, Zhong Shan Yuan Road, Nanshan District, Shenzhen, Guangdong, P.R. China 518052
City:	Shanghai
Postal Code:	201203
Country:	China
Contact Person:	Gong Zhizhou
E-mail:	zhizhou.gong@tcl.com
Telephone:	0086-755-36611722
Fax:	/

3.2 Manufacturer Information

Company Name:	TCL Communication Ltd.
Address /Post:	7/F, Block F4, TCL Communication Technology Building, TCL International E City, Zhong Shan Yuan Road, Nanshan District, Shenzhen, Guangdong, P.R. China 518052
City:	Shanghai
Postal Code:	201203
Country:	China
Contact Person:	Gong Zhizhou
E-mail:	zhizhou.gong@tcl.com
Telephone:	0086-755-36611722
Fax:	/

4 Equipment Under Test (EUT) and Ancillary Equipment (AE)

4.1 About EUT

Description:	LTE / UMTS / GSM mobile phone
Model name:	5033J
Operating mode(s):	GSM 850/900/1800/1900 WCDMA850/900/1700/1900/2100 LTE B1/2/3/4/5/7/8/12/13/17/28, BT, WLAN
Tested Tx Frequency:	825 – 848.8 MHz (GSM 850)
	1850.2 – 1910 MHz (GSM 1900)
	826.4–846.6 MHz (WCDMA 850 Band V)
	1712.4 – 1752.6 MHz (WCDMA 1700 Band IV)
	1852.4–1907.6 MHz (WCDMA1900 Band II)
	1860 – 1900 MHz (LTE Band 2)
	1720 – 1745 MHz (LTE Band 4)
	824.7 – 848.3 MHz (LTE Band 5)
	2502.5 – 2567.5 MHz (LTE Band 7)
	699.7 –715.3 MHz (LTE Band 12)
779.5 –784.5 MHz (LTE Band 13)	
2412 – 2462 MHz (Wi-Fi 2.4G)	
GPRS/EGPRS Multislot Class:	12
Test device Production information:	Production unit
Device type:	Portable device
Antenna type:	Integrated antenna
Accessories/Body-worn configurations:	Headset
Hotspot mode:	Support
Product dimension	Long 137.6mm ;Wide 65.7mm ; Diagonal 152.48mm

4.2 Internal Identification of EUT used during the test

EUTID	IMEI	HW Version	SW Version
1	356268090200117	05	v7LT2
2	356268090200042	05	v7LT2
3	356268090200034	05	v7LT2
4	356745090200056	05	v7LT2
	356745090200064		
5	356745090200031	05	v7LT2
	356745090200049		

*EUT ID: is used to identify the test sample in the lab internally.

Note: It is performed to test SAR with the EUT1 to 2 and conducted power with the EUT3.

It is performed to test spot check with the EUT4 and conducted power with the EUT5.

4.3 Internal Identification of AE used during the test

AE ID	Description	Model	SN	Manufactory
AE1	Battery	CAB1930000C7	/	Ningbo Veken Battery Co.,LTD

*AE ID: is used to identify the test sample in the lab internally.



5 TEST METHODOLOGY

5.1 Applicable Limit Regulations

ANSI C95.1–1992: IEEE Standard for Safety Levels with Respect to Human Exposure to Radio Frequency Electromagnetic Fields, 3 kHz to 300 GHz.

It specifies the maximum exposure limit of **1.6 W/kg** as averaged over any 1 gram of tissue for portable devices being used within 20 cm of the user in the uncontrolled environment.

5.2 Applicable Measurement Standards

IEEE 1528–2013: Recommended Practice for Determining the Peak Spatial-Average Specific Absorption Rate (SAR) in the Human Head from Wireless Communications Devices: Measurement Techniques.

KDB447498 D01 General RF Exposure Guidance v06: Mobile and Portable Devices RF Exposure Procedures and Equipment Authorization Policies.

KDB648474 D04 Handset SAR v01r03: SAR Evaluation Considerations for Wireless Handsets.

KDB941225 D01 SAR test for 3G devices v03r01: SAR Measurement Procedures for 3G Devices

KDB941225 D05 SAR for LTE Devices v02r05: SAR Evaluation Considerations for LTE Devices

KDB248227 D01 802.11 Wi-Fi SAR v02r02: SAR GUIDANCE FOR IEEE 802.11 (Wi-Fi) TRANSMITTERS

KDB865664 D01 SAR measurement 100 MHz to 6 GHz v01r04: SAR Measurement Requirements for 100 MHz to 6 GHz.

KDB865664 D02 RF Exposure Reporting v01r02: RF Exposure Compliance Reporting and Documentation Considerations

6 Specific Absorption Rate (SAR)

6.1 Introduction

SAR is related to the rate at which energy is absorbed per unit mass in an object exposed to a radio field. The SAR distribution in a biological body is complicated and is usually carried out by experimental techniques or numerical modeling. The standard recommends limits for two tiers of groups, occupational/controlled and general population/uncontrolled, based on a person's awareness and ability to exercise control over his or her exposure. In general, occupational/controlled exposure limits are higher than the limits for general population/uncontrolled.

6.2 SAR Definition

The SAR definition is the time derivative (rate) of the incremental energy (dW) absorbed by (dissipated in) an incremental mass (dm) contained in a volume element (dv) of a given density (ρ). The equation description is as below:

$$SAR = \frac{d}{dt} \left(\frac{dW}{dm} \right) = \frac{d}{dt} \left(\frac{dW}{\rho dv} \right)$$

SAR is expressed in units of Watts per kilogram (W/kg)

SAR measurement can be either related to the temperature elevation in tissue by

$$SAR = c \left(\frac{\delta T}{\delta t} \right)$$

Where: C is the specific heat capacity, δT is the temperature rise and δt is the exposure duration, or related to the electrical field in the tissue by

$$SAR = \frac{\sigma |E|^2}{\rho}$$

Where: σ is the conductivity of the tissue, ρ is the mass density of tissue and E is the RMS electrical field strength.

However for evaluating SAR of low power transmitter, electrical field measurement is typically applied.

7 Tissue Simulating Liquids

7.1 Targets for tissue simulating liquid

Table 7.1: Targets for tissue simulating liquid

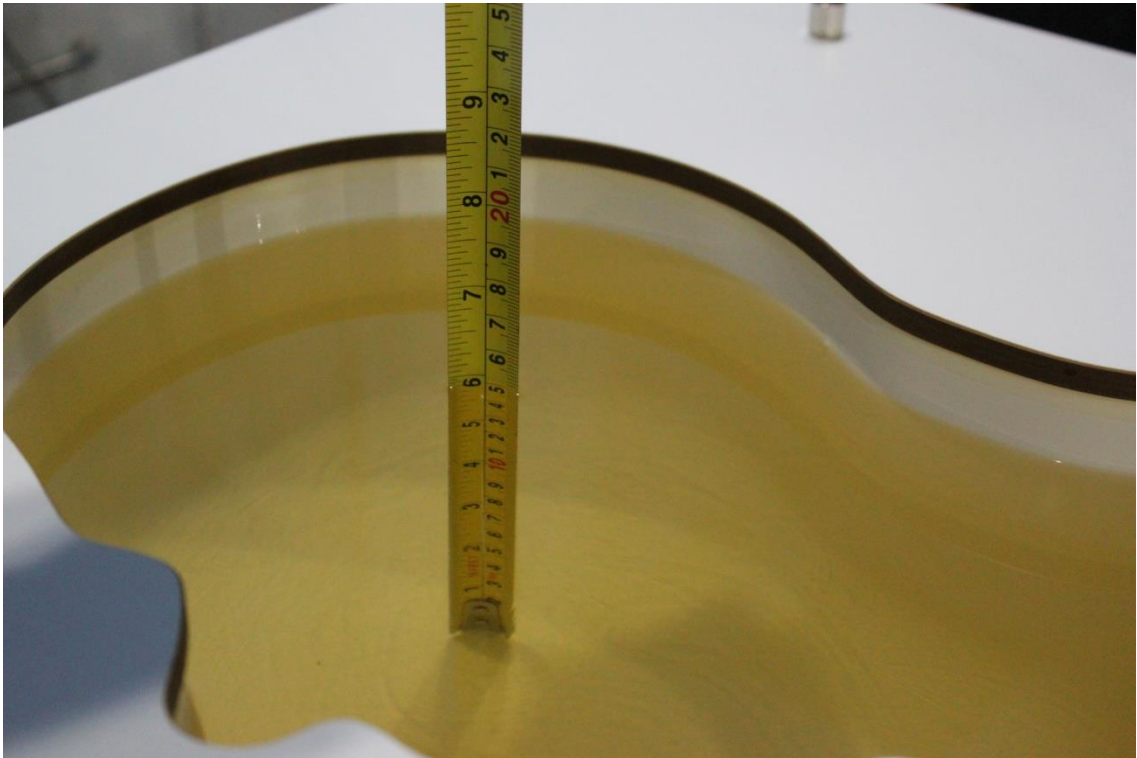
Frequency(MHz)	Liquid Type	Conductivity(σ)	$\pm 5\%$ Range	Permittivity(ϵ)	$\pm 5\%$ Range
750	Head	0.89	0.85~0.93	41.94	39.8~44.0
750	Body	0.96	0.91~1.01	55.5	52.7~58.3
835	Head	0.90	0.86~0.95	41.5	39.4~43.6
835	Body	0.97	0.92~1.02	55.2	52.4~58.0
1750	Head	1.37	1.30~1.44	40.08	38.1~42.1
1750	Body	1.49	1.42~1.56	53.4	50.7~56.1
1900	Head	1.40	1.33~1.47	40.0	38.0~42.0
1900	Body	1.52	1.44~1.60	53.3	50.6~56.0
2450	Head	1.80	1.71~1.89	39.2	37.2~41.2
2450	Body	1.95	1.85~2.05	52.7	50.1~55.3
2600	Head	1.96	1.86~2.06	39.01	37.06~40.96
2600	Body	2.16	2.05~2.27	52.5	49.9~55.1

7.2 Dielectric Performance

Table 7.2: Dielectric Performance of Tissue Simulating Liquid

Measurement Date yyyy/mm/dd	Frequency	Type	Permittivity ϵ	Drift (%)	Conductivity σ (S/m)	Drift (%)
2018/4/11	750 MHz	Head	41.7	-0.57	0.898	0.90
		Body	55.35	-0.27	0.951	-0.94
2018/4/12	835 MHz	Head	41.6	0.24	0.901	0.11
		Body	56.1	1.63	0.988	1.86
2018/4/13	1750 MHz	Head	40.68	1.50	1.38	0.73
		Body	53.22	-0.34	1.514	1.61
2018/4/14	1900 MHz	Head	39.55	-1.13	1.39	-0.71
		Body	53.19	-0.21	1.536	1.05
2018/4/15	2450 MHz	Head	39.05	-0.38	1.784	-0.89
		Body	53.36	1.25	1.966	0.82
2018/4/16	2600 MHz	Head	39.57	1.44	1.966	0.31
		Body	51.61	-1.70	2.138	-1.02

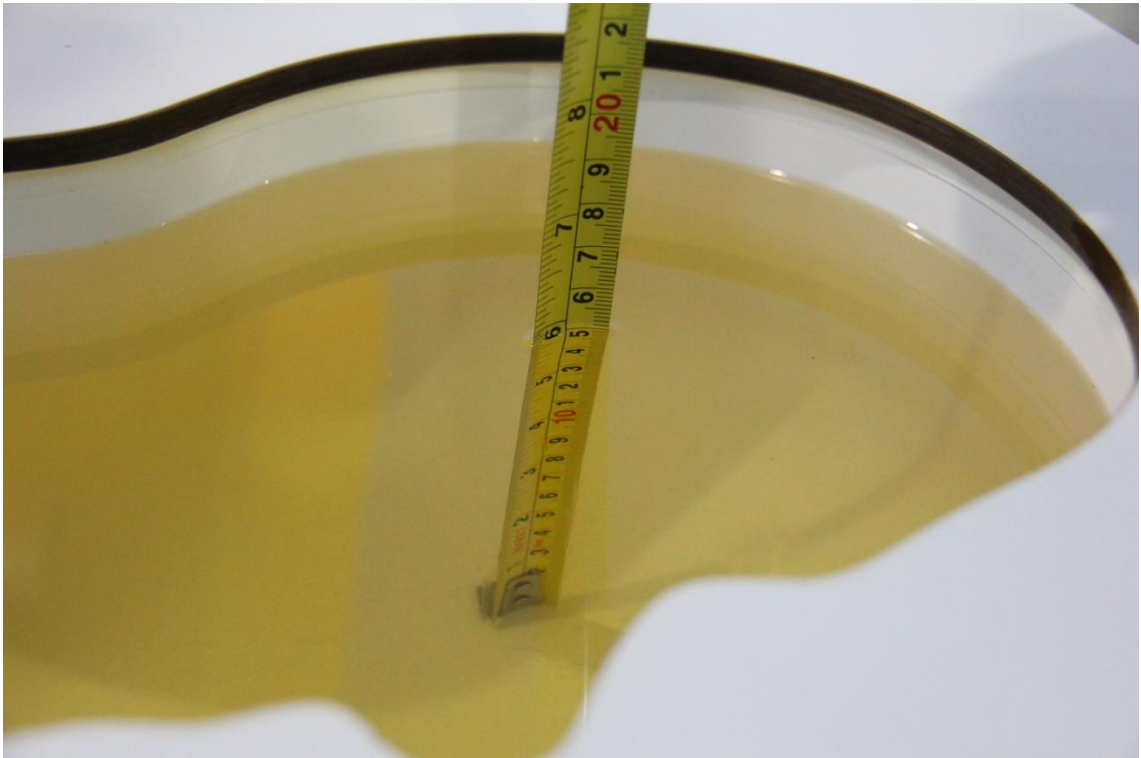
Note: The liquid temperature is 22.0°C



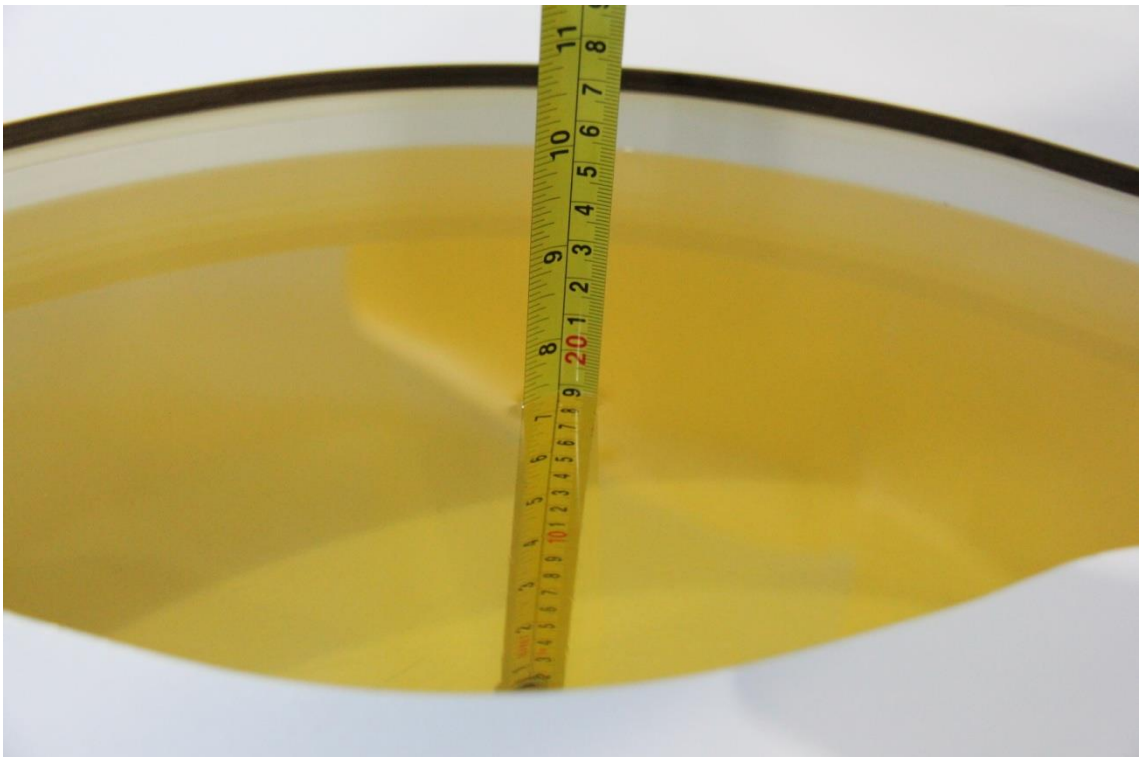
Picture 7-1 Liquid depth in the Head Phantom (750 MHz)



Picture 7-2 Liquid depth in the Flat Phantom (750 MHz)



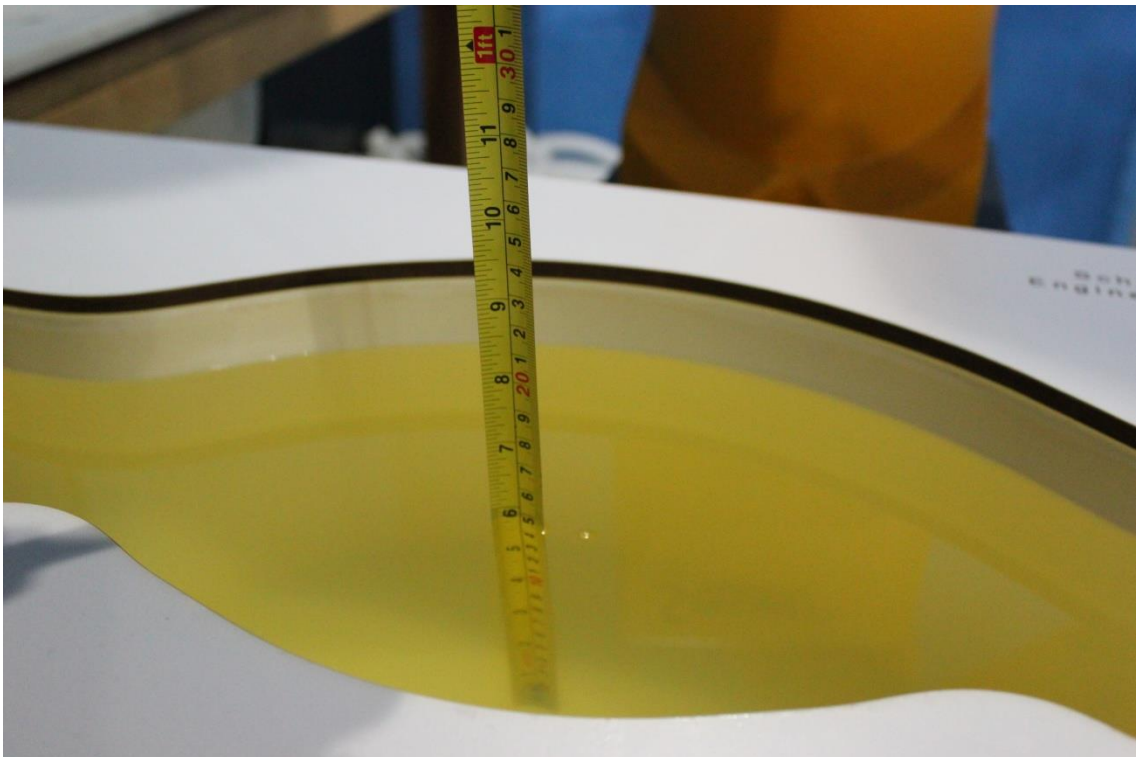
Picture 7-3 Liquid depth in the Head Phantom (835MHz)



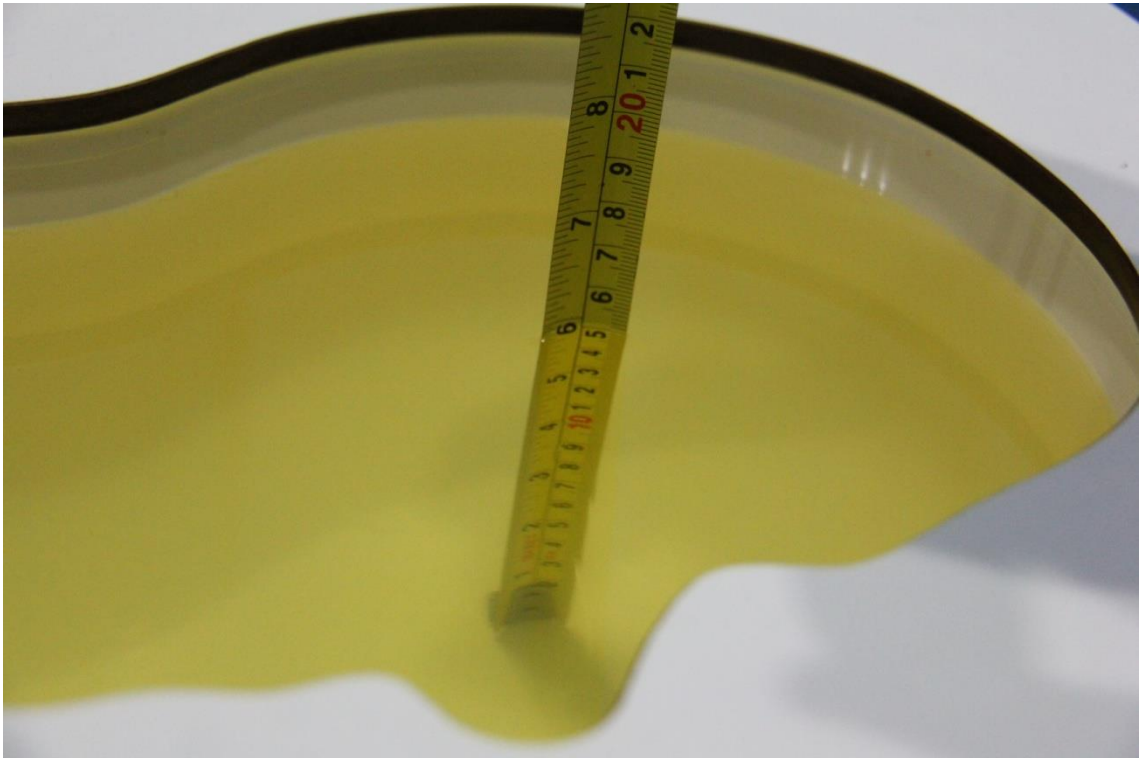
Picture 7-4 Liquid depth in the Flat Phantom (835MHz)



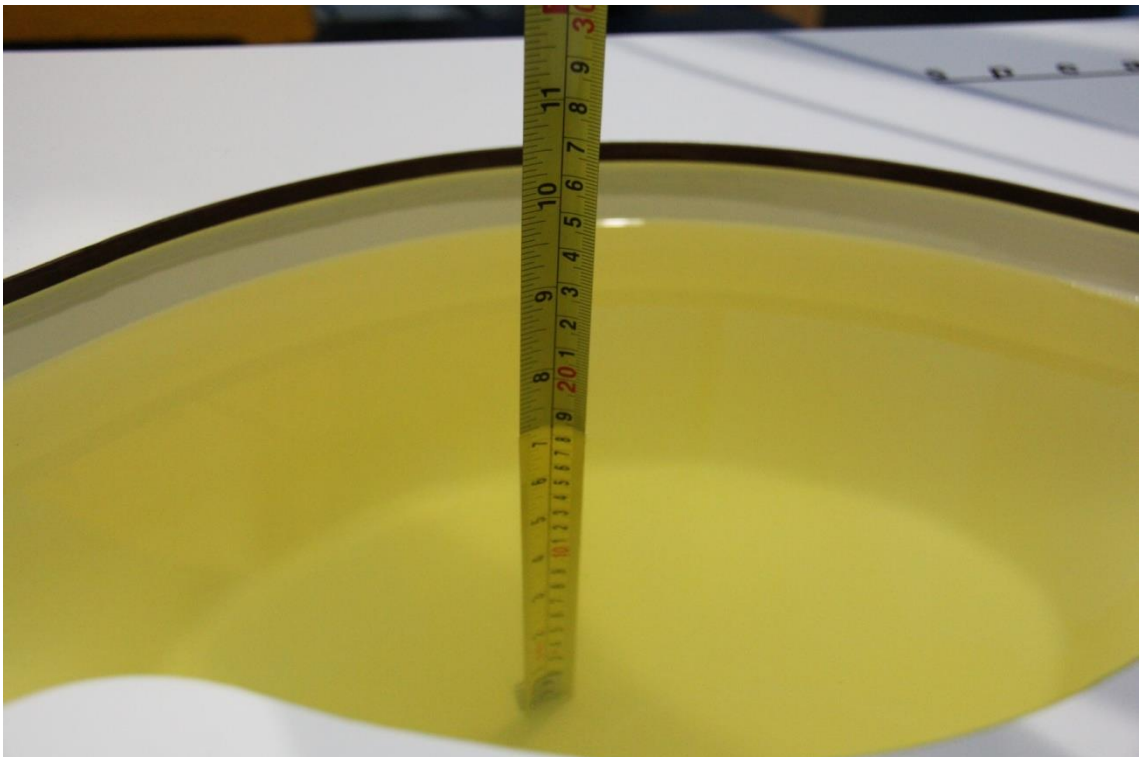
Picture 7-5 Liquid depth in the Head Phantom (1750 MHz)



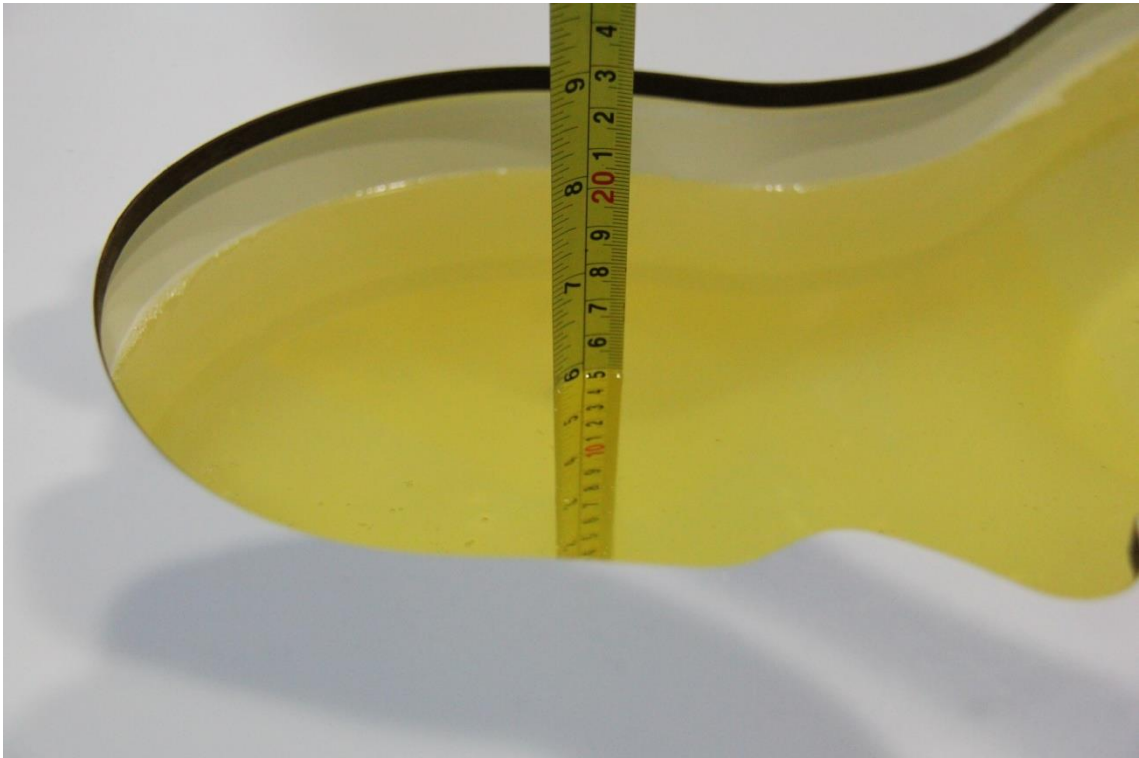
Picture 7-6 Liquid depth in the Flat Phantom (1750MHz)



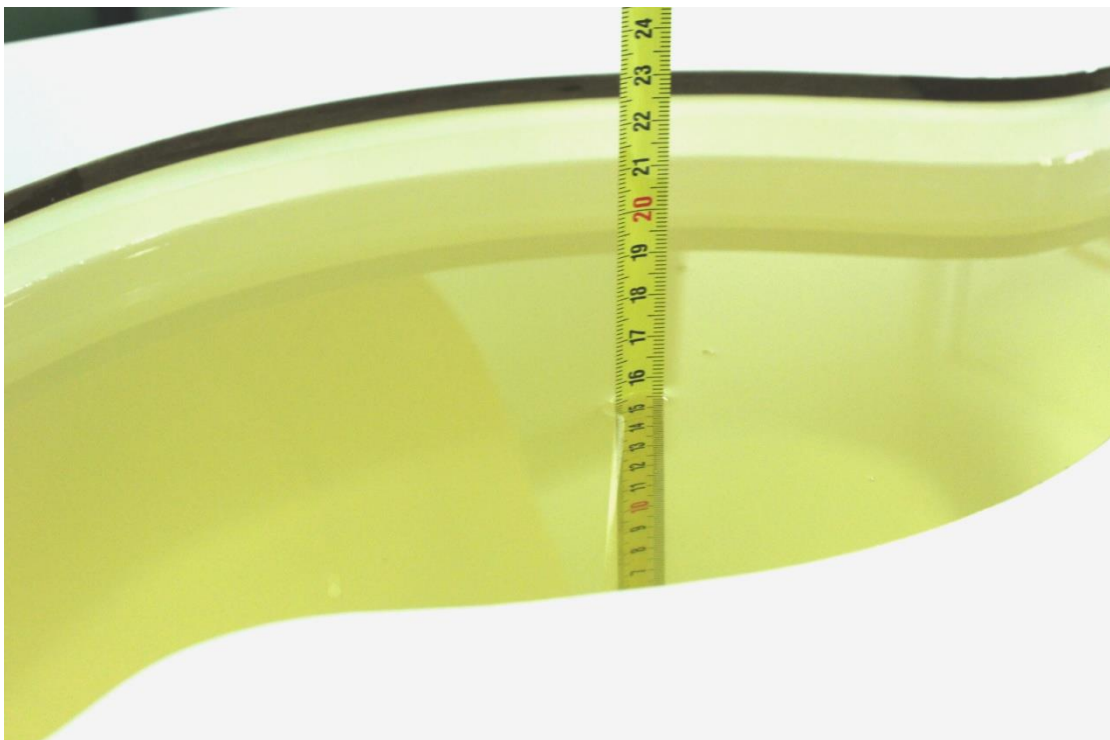
Picture 7-7 Liquid depth in the Head Phantom (1900 MHz)



Picture 7-8 Liquid depth in the Flat Phantom (1900MHz)



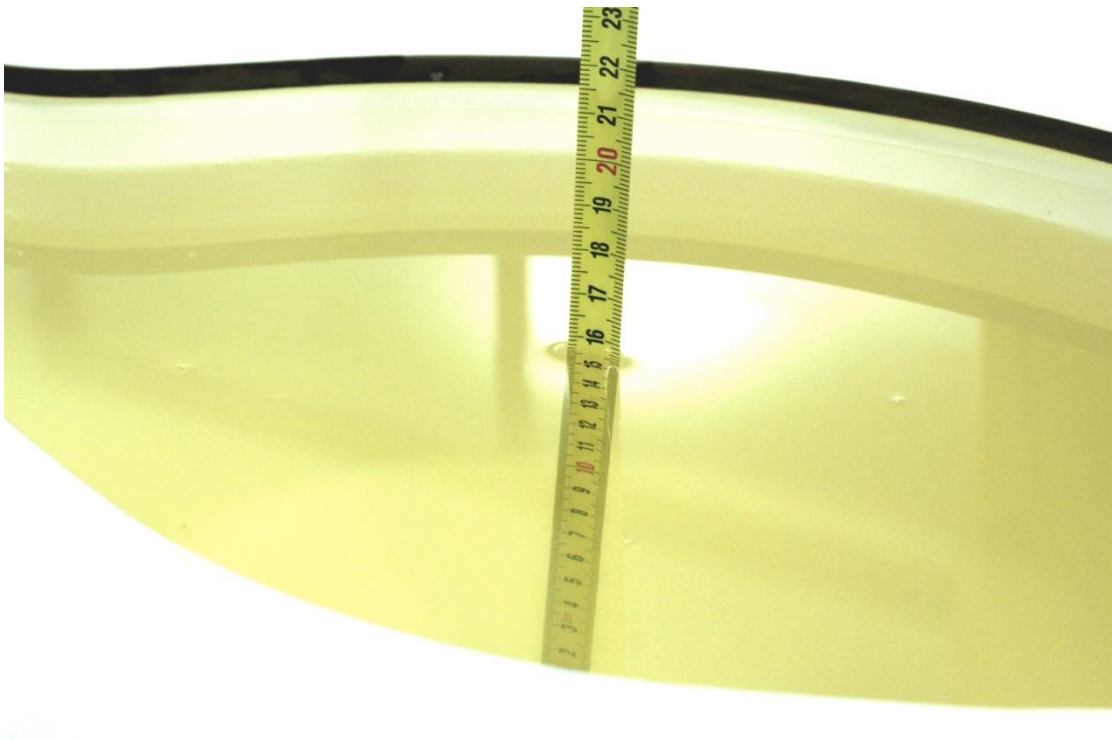
Picture 7-9 Liquid depth in the Head Phantom (2450MHz)



Picture 7-10 Liquid depth in the Flat Phantom (2450MHz)



Picture 7-11 Liquid depth in the Head Phantom (2600 MHz Head)

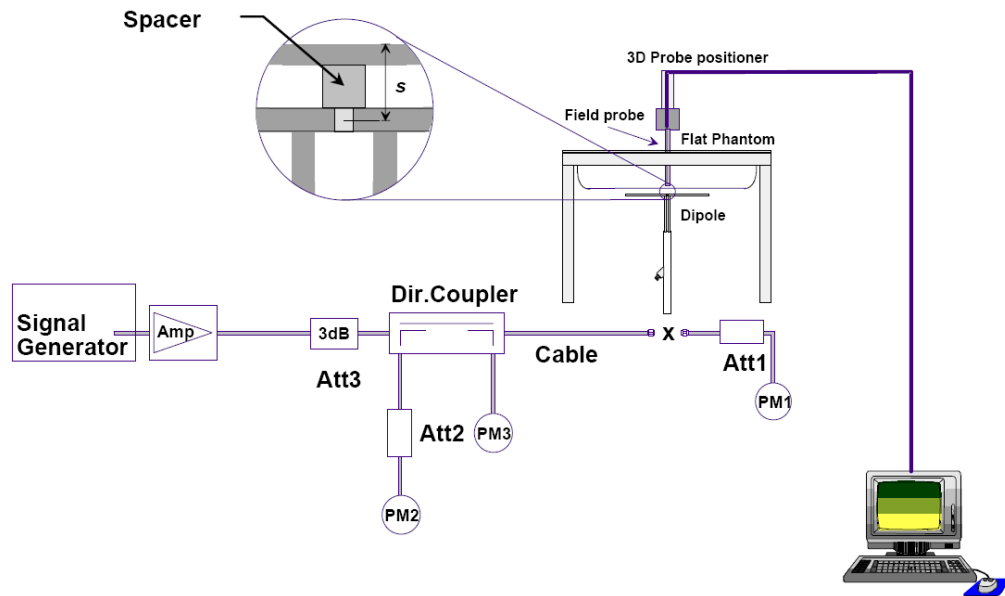


Picture 7-12 Liquid depth in the Flat Phantom (2600MHz)

8 System verification

8.1 System Setup

In the simplified setup for system evaluation, the DUT is replaced by a calibrated dipole and the power source is replaced by a continuous wave that comes from a signal generator. The calibrated dipole must be placed beneath the flat phantom section of the SAM twin phantom with the correct distance holder. The distance holder should touch the phantom surface with a light pressure at the reference marking and be oriented parallel to the long side of the phantom. The equipment setup is shown below:



Picture 8.1 System Setup for System Evaluation



Picture 8.2 Photo of Dipole Setup

8.2 System Verification

SAR system verification is required to confirm measurement accuracy, according to the tissue dielectric media, probe calibration points and other system operating parameters required for measuring the SAR of a test device. The system verification must be performed for each frequency band and within the valid range of each probe calibration point required for testing the device.

The system verification results are required that the area scan estimated 1-g SAR is within 3% of the zoom scan 1-g SAR. The details are presented in annex B.

Table 8.1: System Verification of Head

Measurement Date (yyyy-mm-dd)	Frequency	Target value (W/kg)		Measured value (W/kg)		Deviation	
		10 g Average	1 g Average	10 g Average	1 g Average	10 g Average	1 g Average
2018/4/11	750 MHz	5.42	8.32	5.36	8.32	-1.11%	0.00%
2018/4/12	835 MHz	6.06	9.37	6.08	9.48	0.33%	1.17%
2018/4/13	1750 MHz	19.4	36.7	19.52	36.12	0.62%	-1.58%
2018/4/14	1900 MHz	21.0	40.0	20.8	40.6	-0.95%	1.50%
2018/4/15	2450 MHz	24.7	52.2	25.12	53.16	1.70%	1.84%
2018/4/16	2600 MHz	25.8	57.9	25.96	58.8	0.62%	1.55%

Table 8.2: System Verification of Body

Measurement Date (yyyy-mm-dd)	Frequency	Target value (W/kg)		Measured value (W/kg)		Deviation	
		10 g Average	1 g Average	10 g Average	1 g Average	10 g Average	1 g Average
2018/4/11	750 MHz	5.68	8.66	5.64	8.84	-0.70%	2.08%
2018/4/12	835 MHz	6.12	9.41	6.2	9.24	1.31%	-1.81%
2018/4/13	1750 MHz	19.8	37.1	20.08	36.76	1.41%	-0.92%
2018/4/14	1900 MHz	21.5	40.5	21.24	40.12	-1.21%	-0.94%
2018/4/15	2450 MHz	23.8	50.4	23.44	49.88	-1.51%	-1.03%
2018/4/16	2600 MHz	24.8	55.5	25.2	54.64	1.61%	-1.55%

9 Measurement Procedures

9.1 Tests to be performed

In order to determine the highest value of the peak spatial-average SAR of a handset, all device positions, configurations and operational modes shall be tested for each frequency band according to steps 1 to 3 below. A flowchart of the test process is shown in picture 9.1.

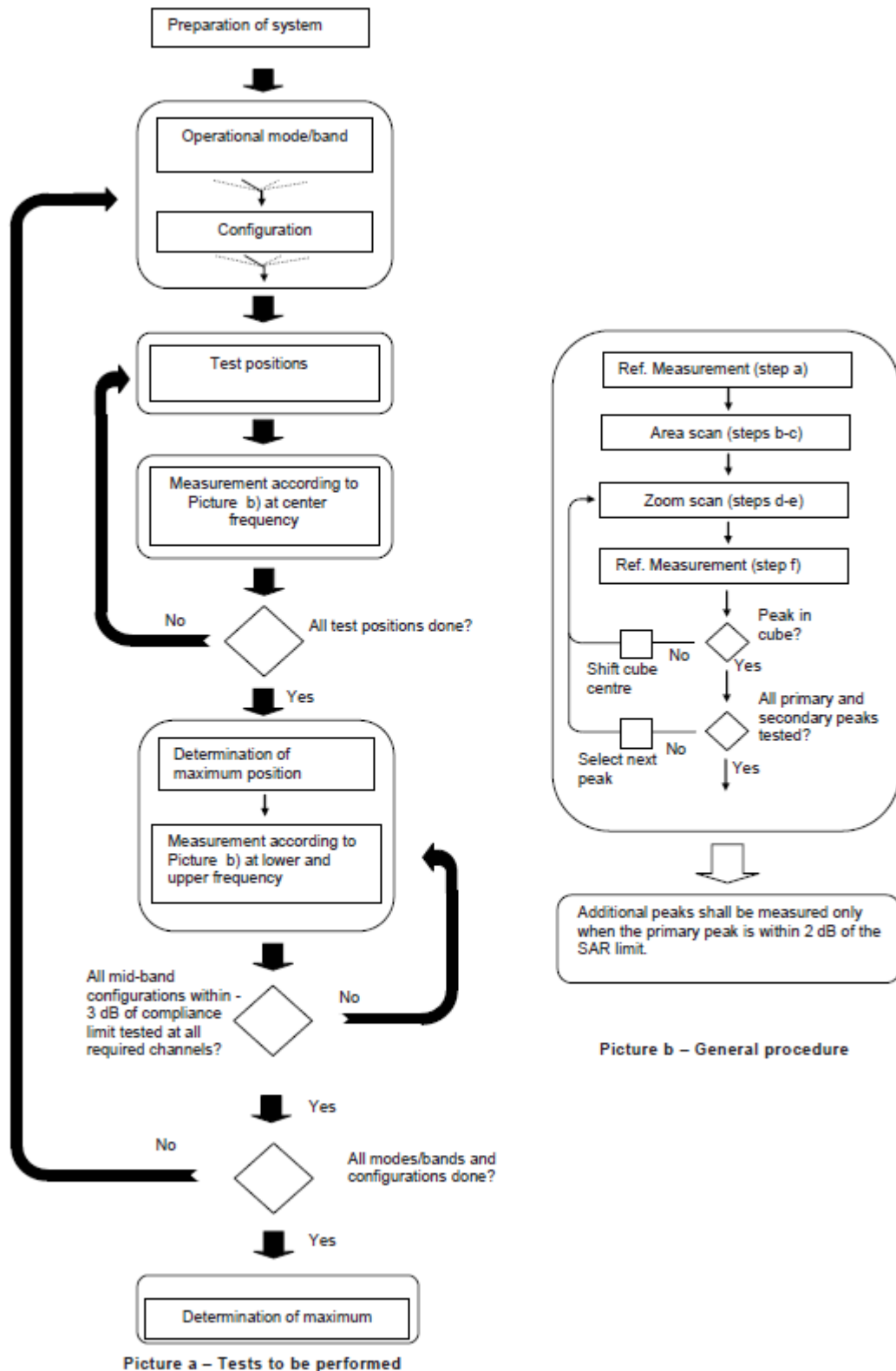
Step 1: The tests described in 9.2 shall be performed at the channel that is closest to the center of the transmit frequency band (f_c) for:

- a) all device positions (cheek and tilt, for both left and right sides of the SAM phantom, as described in annex D),
- b) all configurations for each device position in a), e.g., antenna extended and retracted, and
- c) all operational modes, e.g., analogue and digital, for each device position in a) and configuration in b) in each frequency band.

If more than three frequencies need to be tested according to 11.1 (i.e., $N_c > 3$), then all frequencies, configurations and modes shall be tested for all of the above test conditions.

Step 2: For the condition providing highest peak spatial-average SAR determined in Step 1, perform all tests described in 9.2 at all other test frequencies, i.e., lowest and highest frequencies. In addition, for all other conditions (device position, configuration and operational mode) where the peak spatial-average SAR value determined in Step 1 is within 3 dB of the applicable SAR limit, it is recommended that all other test frequencies shall be tested as well.

Step 3: Examine all data to determine the highest value of the peak spatial-average SAR found in Steps 1 to 2.



Picture 9.1 Block diagram of the tests to be performed

9.2 General Measurement Procedure

The area and zoom scan resolutions specified in the table below must be applied to the SAR measurements and fully documented in SAR reports to qualify for TCB approval. Probe boundary effect error compensation is required for measurements with the probe tip closer than half a probe tip diameter to the phantom surface. Both the probe tip diameter and sensor offset distance must satisfy measurement protocols; to ensure probe boundary effect errors are minimized and the higher fields closest to the phantom surface can be correctly measured and extrapolated to the phantom surface for computing 1-g SAR. Tolerances of the post-processing algorithms must be verified by the test laboratory for the scan resolutions used in the SAR measurements, according to the reference distribution functions specified in IEEE Std 1528-2013. The results should be documented as part of the system validation records and may be requested to support test results when all the measurement parameters in the following table are not satisfied.

		≤ 3 GHz	> 3 GHz	
Maximum distance from closest measurement point (geometric center of probe sensors) to phantom surface		5 ± 1 mm	$\frac{1}{2} \cdot \delta \cdot \ln(2) \pm 0.5$ mm	
Maximum probe angle from probe axis to phantom surface normal at the measurement location		$30^\circ \pm 1^\circ$	$20^\circ \pm 1^\circ$	
Maximum area scan spatial resolution: Δx_{Area} , Δy_{Area}		≤ 2 GHz: ≤ 15 mm 2 – 3 GHz: ≤ 12 mm	3 – 4 GHz: ≤ 12 mm 4 – 6 GHz: ≤ 10 mm	
		When the x or y dimension of the test device, in the measurement plane orientation, is smaller than the above, the measurement resolution must be \leq the corresponding x or y dimension of the test device with at least one measurement point on the test device.		
Maximum zoom scan spatial resolution: Δx_{Zoom} , Δy_{Zoom}		≤ 2 GHz: ≤ 8 mm 2 – 3 GHz: ≤ 5 mm*	3 – 4 GHz: ≤ 5 mm* 4 – 6 GHz: ≤ 4 mm*	
Maximum zoom scan spatial resolution, normal to phantom surface	uniform grid: $\Delta z_{Zoom}(n)$	≤ 5 mm	3 – 4 GHz: ≤ 4 mm 4 – 5 GHz: ≤ 3 mm 5 – 6 GHz: ≤ 2 mm	
	graded grid	$\Delta z_{Zoom}(1)$: between 1 st two points closest to phantom surface	≤ 4 mm	3 – 4 GHz: ≤ 3 mm 4 – 5 GHz: ≤ 2.5 mm 5 – 6 GHz: ≤ 2 mm
		$\Delta z_{Zoom}(n>1)$: between subsequent points	$\leq 1.5 \cdot \Delta z_{Zoom}(n-1)$	
Minimum zoom scan volume	x, y, z	≥ 30 mm	3 – 4 GHz: ≥ 28 mm 4 – 5 GHz: ≥ 25 mm 5 – 6 GHz: ≥ 22 mm	
Note: δ is the penetration depth of a plane-wave at normal incidence to the tissue medium; see draft standard IEEE P1528-2011 for details. * When zoom scan is required and the <i>reported</i> SAR from the area scan based 1-g SAR estimation procedures of KDB 447498 is ≤ 1.4 W/kg, ≤ 8 mm, ≤ 7 mm and ≤ 5 mm zoom scan resolution may be applied, respectively, for 2 GHz to 3 GHz, 3 GHz to 4 GHz and 4 GHz to 6 GHz.				

9.3 WCDMA Measurement Procedures for SAR

The following procedures are applicable to WCDMA handsets operating under 3GPP Release99, Release 5 and Release 6. The default test configuration is to measure SAR with an established radio link between the DUT and a communication test set using a 12.2kbps RMC (reference measurement channel) configured in Test Loop Mode 1. SAR is selectively confirmed for other physical channel configurations (DPCCH & DPDCH_n), HSDPA and HSPA (HSUPA/HSDPA) modes according to output power, exposure conditions and device operating capabilities. Both uplink and downlink should be configured with the same RMC or AMR, when required. SAR for Release 5 HSDPA and Release 6 HSPA are measured using the applicable FRC (fixed reference channel) and E-DCH reference channel configurations. Maximum output power is verified according to applicable versions of 3GPP TS 34.121 and SAR must be measured according to these maximum output conditions. When Maximum Power Reduction (MPR) is not implemented according to Cubic Metric (CM) requirements for Release 6 HSPA, the following procedures do not apply.

For Release 5 HSDPA Data Devices:

Sub-test	β_c	β_d	β_d (SF)	β_c / β_d	β_{hs}	CM/dB
1	2/15	15/15	64	2/15	4/15	0.0
2	12/15	15/15	64	12/15	24/25	1.0
3	15/15	8/15	64	15/8	30/15	1.5
4	15/15	4/15	64	15/4	30/15	1.5

For Release 6 HSPA Data Devices

Sub-test	β_c	β_d	β_d (SF)	β_c / β_d	β_{hs}	β_{ec}	β_{ed}	β_{ed} (SF)	β_{ed} (codes)	CM (dB)	MPR (dB)	AG Index	E-TFCI
1	11/15	15/15	64	11/15	22/15	209/225	1039/225	4	1	1.5	1.5	20	75
2	6/15	15/15	64	6/15	12/15	12/15	12/15	4	1	1.5	1.5	12	67
3	15/15	9/15	64	15/9	30/15	30/15	$\beta_{ed1}:47/15$ $\beta_{ed2}:47/15$	4	2	1.5	1.5	15	92
4	2/15	15/15	64	2/15	4/15	4/15	56/75	4	1	1.5	1.5	17	71
5	15/15	15/15	64	15/15	24/15	30/15	134/15	4	1	1.5	1.5	21	81

Rel.8 DC-HSDPA (Cat 24)

SAR test exclusion for Rel.8 DC-HSDPA must satisfy the SAR test exclusion requirements of Rel.5 HSDPA. SAR test exclusion for DC-HSDPA devices is determined by power measurements according to the H-Set 12, Fixed Reference Channel (FRC) configuration in Table C.8.1.12 of 3GPP TS 34.121-1. A primary and a secondary serving HS-DSCH Cell are required to perform the power measurement and for the results to qualify for SAR test exclusion.

9.4 SAR Measurement for LTE

SAR tests for LTE are performed with a base station simulator, Rohde & Schwarz CMW500. Closed loop power control was used so the UE transmits with maximum output power during SAR testing. All powers were measured with the CMW 500.

It is performed for conducted power and SAR based on the KDB941225 D05.

SAR is evaluated separately according to the following procedures for the different test positions in each exposure condition – head, body, body-worn accessories and other use conditions. The procedures in the following subsections are applied separately to test each LTE frequency band.

1) QPSK with 1 RB allocation

Start with the largest channel bandwidth and measure SAR for QPSK with 1 RB allocation, using the RB offset and required test channel combination with the highest maximum output power among RB offsets at the upper edge, middle and lower edge of each required test channel. When the reported SAR is ≤ 0.8 W/kg, testing of the remaining RB offset configurations and required test channels is not required for 1 RB allocation; otherwise, SAR is required for the remaining required test channels and only for the RB offset configuration with the highest output power for that channel. When the reported SAR of a required test channel is > 1.45 W/kg, SAR is required for all three RB offset configurations for that required test channel.

2) QPSK with 50% RB allocation

The procedures required for 1 RB allocation in 1) are applied to measure the SAR for QPSK with 50% RB allocation.

3) QPSK with 100% RB allocation

For QPSK with 100% RB allocation, SAR is not required when the highest maximum output power for 100 % RB allocation is less than the highest maximum output power in 50% and 1 RB allocations and the highest reported SAR for 1 RB and 50% RB allocation in 1) and 2) are ≤ 0.8 W/kg. Otherwise, SAR is measured for the highest output power channel; and if the reported SAR is > 1.45 W/kg, the remaining required test channels must also be tested.

9.5 Bluetooth & Wi-Fi Measurement Procedures for SAR

Normal network operating configurations are not suitable for measuring the SAR of 802.11 transmitters in general. Unpredictable fluctuations in network traffic and antenna diversity conditions can introduce undesirable variations in SAR results. The SAR for these devices should be measured using chipset based test mode software to ensure that the results are consistent and reliable.

Chipset based test mode software is hardware dependent and generally varies among manufacturers. The device operating parameters established in a test mode for SAR measurements must be identical to those programmed in production units, including output power levels, amplifier gain settings and other RF performance tuning parameters. The test frequencies should correspond to actual channel frequencies defined for domestic use. SAR for devices with switched diversity should be measured with only one antenna transmitting at a time during each SAR measurement, according to a fixed modulation and data rate. The same data pattern should be used for all measurements.

9.6 Power Drift

To control the output power stability during the SAR test, DASY4 system calculates the power drift by measuring the E-field at the same location at the beginning and at the end of the measurement for each test position. These drift values can be found in section 14 labeled as: (Power Drift [dB]). This ensures that the power drift during one measurement is within 5%.

10 Area Scan Based 1-g SAR

10.1 Requirement of KDB

According to the KDB447498 D01 v05, when the implementation is based the specific polynomial fit algorithm as presented at the 29th Bioelectromagnetics Society meeting (2007) and the estimated 1-g SAR is ≤ 1.2 W/kg, a zoom scan measurement is not required provided it is also not needed for any other purpose; for example, if the peak SAR location required for simultaneous transmission SAR test exclusion can be determined accurately by the SAR system or manually to discriminate between distinctive peaks and scattered noisy SAR distributions from area scans.

There must not be any warning or alert messages due to various measurement concerns identified by the SAR system; for example, noise in measurements, peaks too close to scan boundary, peaks are too sharp, spatial resolution and uncertainty issues etc. The SAR system verification must also demonstrate that the area scan estimated 1-g SAR is within 3% of the zoom scan 1-g SAR (See Annex B). When all the SAR results for each exposure condition in a frequency band and wireless mode are based on estimated 1-g SAR, the 1-g SAR for the highest SAR configuration must be determined by a zoom scan.

10.2 Fast SAR Algorithms

The approach is based on the area scan measurement applying a frequency dependent attenuation parameter. This attenuation parameter was empirically determined by analyzing a large number of phones. The MOTOROLA FAST SAR was developed and validated by the MOTOROLA Research Group in Ft. Lauderdale.

In the initial study, an approximation algorithm based on Linear fit was developed. The accuracy of the algorithm has been demonstrated across a broad frequency range (136-2450 MHz) and for both 1- and 10-g averaged SAR using a sample of 264 SAR measurements from 55 wireless handsets. For the sample size studied, the root-mean-squared errors of the algorithm are 1.2% and 5.8% for 1- and 10-g averaged SAR, respectively. The paper describing the algorithm in detail is expected to be published in August 2004 within the Special Issue of Transactions on MTT.

In the second step, the same research group optimized the fitting algorithm to an Polynomial fit whereby the frequency validity was extended to cover the range 30-6000MHz. Details of this study can be found in the BEMS 2007 Proceedings.

Both algorithms are implemented in DASY software.

11 Conducted Output Power

11.1 GSM Measurement result

During the process of testing, the EUT was controlled via Agilent Digital Radio Communication tester (E5515C) to ensure the maximum power transmission and proper modulation. This result contains conducted output power for the EUT. In all cases, the measured peak output power should be greater and within 5% than EMI measurement.

Table 11-1 GSM850 #1

GSM850 #1								
Config	Tune-up	Measured Power (dBm)			Calculation	Frame Burst Power (dBm)		
		CH251 848.8 MHz	CH190 836.6 MHz	CH128 824.2 MHz		CH251 848.8 MHz	CH190 836.6 MHz	CH128 824.2 MHz
GSM Speech	33.30	32.69	32.78	32.63				
GPRS 1 Txslot	33.30	32.63	32.72	32.58	-9.03	23.60	23.69	23.55
GPRS 2 Txslots	30.50	30.33	30.38	30.14	-6.02	24.31	24.36	24.12
GPRS 3 Txslots	28.50	28.12	28.18	27.82	-4.26	23.86	23.92	23.56
GPRS 4 Txslots	27.50	26.79	26.91	26.50	-3.01	23.78	23.90	23.49
EGPRS GMSK 1 Txslot	33.30	32.70	32.77	32.61	-9.03	23.67	23.74	23.58
EGPRS GMSK 2 Txslots	30.50	30.39	30.43	30.18	-6.02	24.37	24.41	24.16
EGPRS GMSK 3 Txslots	28.50	28.20	28.23	27.87	-4.26	23.94	23.97	23.61
EGPRS GMSK 4 Txslots	27.50	26.87	26.97	26.55	-3.01	23.86	23.96	23.54
EGPRS 8PSK 1 Txslot	27.00	26.01	25.99	26.12	-9.03	16.98	16.96	17.09
EGPRS 8PSK 2 Txslots	25.50	24.90	24.97	25.01	-6.02	18.88	18.95	18.99
EGPRS 8PSK 3 Txslots	24.00	22.85	22.88	22.96	-4.26	18.59	18.62	18.70
EGPRS 8PSK 4 Txslots	22.50	21.79	21.79	21.86	-3.01	18.78	18.78	18.85

Table 11-2 PCS1900 #1

PCS1900 #1								
Config	Tune-up	Measured Power (dBm)			Calculation	Frame Burst Power (dBm)		
		CH810 1909.8 MHz	CH661 1880 MHz	CH512 1850.2 MHz		CH810 1909.8 MHz	CH661 1880 MHz	CH512 1850.2 MHz
GSM Speech	30.30	29.99	30.01	29.90				
GPRS 1 Txslot	30.30	29.99	30.02	29.90	-9.03	20.96	20.99	20.87
GPRS 2 Txslots	28.00	27.36	27.73	27.59	-6.02	21.34	21.71	21.57
GPRS 3 Txslots	26.00	25.21	25.53	25.57	-4.26	20.95	21.27	21.31
GPRS 4 Txslots	25.00	24.16	24.47	24.55	-3.01	21.15	21.46	21.54
EGPRS GMSK 1 Txslot	30.30	29.96	29.98	29.89	-9.03	20.93	20.95	20.86
EGPRS GMSK 2 Txslots	28.00	27.36	27.70	27.57	-6.02	21.34	21.68	21.55
EGPRS GMSK 3 Txslots	26.00	25.20	25.50	25.55	-4.26	20.94	21.24	21.29
EGPRS GMSK 4 Txslots	25.00	24.15	24.45	24.53	-3.01	21.14	21.44	21.52
EGPRS 8PSK 1 Txslot	26.00	25.75	25.85	25.88	-9.03	16.72	16.82	16.85
EGPRS 8PSK 2 Txslots	25.00	24.79	24.97	24.96	-6.02	18.77	18.95	18.94
EGPRS 8PSK 3 Txslots	23.00	22.89	22.99	22.84	-4.26	18.63	18.73	18.58
EGPRS 8PSK 4 Txslots	22.00	21.71	21.93	21.81	-3.01	18.70	18.92	18.80

NOTES:

Division Factors

To average the power, the division factor is as follows:

1TX-slot = 1 transmit time slot out of 8 time slots=> conducted power divided by (8/1) => -9.03dB

2TX-slots = 2 transmit time slots out of 8 time slots=> conducted power divided by (8/2) => -6.02dB

3TX-slots = 3 transmit time slots out of 8 time slots=> conducted power divided by (8/3) => -4.26dB

4TX-slots = 4 transmit time slots out of 8 time slots=> conducted power divided by (8/4) => -3.01dB

According to the conducted power as above, the body measurements are performed with 2Txslots for 850MHz and 1900MHz.

11.2 WCDMA Measurement result

Table 11-3 WCDMA1900-BII #1

WCDMA1900-BII #1					
SN:			Measured Power (dBm)		
Item		Tune-up	CH9538 1907.6 MHz	CH9400 1880 MHz	CH9262 1852.4 MHz
WCDMA	\	23.50	23.25	23.32	23.45
HSUPA	1.00	21.00	19.98	19.92	19.86
	2.00	21.00	19.93	19.92	19.85
	3.00	22.00	20.95	20.89	20.85
	4.00	20.50	19.48	19.43	19.39
	5.00	22.00	20.84	20.81	20.79
HSPA+	\	22.50	21.54	21.57	21.56
DC-HSDPA	1.00	23.00	22.10	22.09	22.13
	2.00	23.00	22.11	22.13	22.14
	3.00	23.00	21.60	21.65	21.61
	4.00	23.00	21.59	21.63	21.62

Table 11-4 WCDMA1700-BIV #1

WCDMA1700-BIV #1					
SN:			Measured Power (dBm)		
Item		Tune-up	CH1513 1752.6 MHz	CH1412 1732.4 MHz	CH1312 1712.4 MHz
WCDMA	\	23.50	23.11	23.12	23.14
HSUPA	1.00	21.00	19.58	19.66	19.63
	2.00	21.00	19.56	19.61	19.66
	3.00	22.00	20.55	20.59	20.62
	4.00	20.50	19.14	19.14	19.15
	5.00	22.00	20.45	20.51	20.55
HSPA+	\	22.50	21.40	21.36	21.24
DC-HSDPA	1.00	23.00	21.90	21.89	21.86
	2.00	23.00	21.91	21.90	21.83
	3.00	23.00	21.40	21.38	21.32
	4.00	23.00	21.42	21.37	21.30

Table 11-5 WCDMA850-BV #1

WCDMA850-BV #1					
SN:			Measured Power (dBm)		
Item		Tune-up	CH4233 846.6 MHz	CH4182 835.4 MHz	CH4132 826.4 MHz
WCDMA	\	24.00	23.34	23.40	23.41
HSUPA	1.00	21.00	20.21	20.26	20.21
	2.00	21.00	20.24	20.23	20.15
	3.00	22.00	21.22	21.25	21.19
	4.00	20.50	19.75	19.81	19.74
	5.00	22.00	21.13	21.18	21.14
HSPA+	\	22.50	21.88	21.95	21.89
DC-HSDPA	1.00	23.00	22.46	22.48	22.43
	2.00	23.00	22.47	22.47	22.44
	3.00	23.00	21.94	21.97	21.90
	4.00	23.00	21.92	21.94	21.92

11.3 LTE Measurement result

Table 11-6 LTE1900-FDD2 #1

LTE1900-FDD2 #1										
SN	BandWidth	RB No./Start	Channel	Tune-up	Measured Power (dBm) & MPR					
					QPSK		16QAM			
					Measured Power	MPR	Measured Power	MPR		
	1.4MHz	1H	19193	23.5	22.83	0	21.69	1		
			18900	23.5	22.73	0	22.02	1		
			18607	23.5	22.81	0	21.72	1		
		1M	19193	23.5	22.98	0	21.87	1		
			18900	23.5	22.89	0	22.21	1		
			18607	23.5	22.94	0	21.86	1		
		1L	19193	23.5	22.69	0	21.70	1		
			18900	23.5	22.63	0	22.02	1		
			18607	23.5	22.62	0	21.70	1		
		3H	19193	23.5	22.65	0	21.70	1		
			18900	23.5	22.70	0	21.98	1		
			18607	23.5	22.71	0	21.96	1		
		3M	19193	23.5	22.73	0	21.72	1		
			18900	23.5	22.77	0	21.98	1		
			18607	23.5	22.80	0	22.00	1		
		3L	19193	23.5	22.65	0	21.67	1		
			18900	23.5	22.72	0	21.94	1		
			18607	23.5	22.72	0	21.91	1		
		6	19193	23.5	21.82	1	20.87	2		
			18900	23.5	21.79	1	20.67	2		
			18607	23.5	21.81	1	20.94	2		
			3MHz	1H	19185	23.5	22.84	0	21.65	1
					18900	23.5	22.76	0	21.66	1
					18615	23.5	22.77	0	22.08	1
				1M	19185	23.5	22.91	0	21.83	1
					18900	23.5	22.76	0	21.78	1
					18615	23.5	22.81	0	22.28	1
1L	19185			23.5	22.76	0	21.73	1		
	18900			23.5	22.74	0	21.67	1		
	18615			23.5	22.75	0	22.13	1		
8H	19185			23.5	21.89	1	20.78	2		
	18900			23.5	21.86	1	20.84	2		
	18615			23.5	21.88	1	20.84	2		
8M	19185			23.5	21.81	1	20.80	2		
	18900			23.5	21.79	1	20.85	2		
	18615			23.5	21.76	1	20.88	2		
8L	19185			23.5	21.83	1	20.76	2		
	18900			23.5	21.80	1	20.88	2		
	18615			23.5	21.79	1	20.85	2		
15	19185			23.5	21.75	1	20.70	2		
	18900			23.5	21.77	1	20.77	2		
	18615			23.5	21.74	1	20.77	2		
	5MHz			1H	19175	23.5	22.64	0	21.68	1
					18900	23.5	22.62	0	21.82	1
					18625	23.5	22.59	0	22.13	1
				1M	19175	23.5	22.91	0	21.95	1
					18900	23.5	22.87	0	22.06	1
					18625	23.5	22.88	0	22.39	1
		1L	19175	23.5	22.64	0	21.70	1		
			18900	23.5	22.61	0	21.82	1		
			18625	23.5	22.61	0	22.16	1		
		12H	19175	23.5	21.67	1	20.71	2		
			18900	23.5	21.69	1	20.80	2		
			18625	23.5	21.73	1	20.90	2		
		12M	19175	23.5	21.77	1	20.80	2		
			18900	23.5	21.79	1	20.86	2		
			18625	23.5	21.80	1	20.91	2		
		12L	19175	23.5	21.70	1	20.75	2		
			18900	23.5	21.74	1	20.82	2		
			18625	23.5	21.63	1	20.78	2		
		25	19175	23.5	21.71	1	20.64	2		
			18900	23.5	21.74	1	20.76	2		
			18625	23.5	21.72	1	20.77	2		

10MHz	1H	19150	23.5	22.77	0	21.70	1	
		18900	23.5	22.69	0	21.60	1	
		18650	23.5	22.74	0	22.04	1	
	1M	19150	23.5	22.97	0	21.80	1	
		18900	23.5	22.92	0	21.77	1	
		18650	23.5	22.87	0	22.17	1	
	1L	19150	23.5	22.69	0	21.65	1	
		18900	23.5	22.67	0	21.62	1	
		18650	23.5	22.74	0	22.08	1	
	25H	19150	23.5	21.74	1	20.82	2	
		18900	23.5	21.80	1	20.80	2	
		18650	23.5	21.83	1	20.82	2	
	25M	19150	23.5	21.82	1	20.89	2	
		18900	23.5	21.79	1	20.76	2	
		18650	23.5	21.76	1	20.80	2	
	25L	19150	23.5	21.76	1	20.85	2	
		18900	23.5	21.74	1	20.76	2	
		18650	23.5	21.69	1	20.69	2	
	50	19150	23.5	21.76	1	20.76	2	
		18900	23.5	21.76	1	20.72	2	
		18650	23.5	21.76	1	20.73	2	
	15MHz	1H	19125	23.5	22.64	0	21.90	1
			18900	23.5	22.57	0	21.51	1
			18675	23.5	22.63	0	21.96	1
		1M	19125	23.5	22.78	0	22.09	1
			18900	23.5	22.72	0	21.67	1
			18675	23.5	22.75	0	22.08	1
1L		19125	23.5	22.66	0	21.96	1	
		18900	23.5	22.59	0	21.58	1	
		18675	23.5	22.67	0	22.03	1	
36H		19125	23.5	21.84	1	20.75	2	
		18900	23.5	21.78	1	20.74	2	
		18675	23.5	21.74	1	20.76	2	
36M		19125	23.5	21.85	1	20.79	2	
		18900	23.5	21.78	1	20.75	2	
		18675	23.5	21.79	1	20.78	2	
36L		19125	23.5	21.83	1	20.76	2	
		18900	23.5	21.75	1	20.75	2	
		18675	23.5	21.66	1	20.72	2	
75		19125	23.5	21.83	1	20.76	2	
		18900	23.5	21.81	1	20.76	2	
		18675	23.5	21.69	1	20.70	2	
20MHz		1H	19100	23.5	22.41	0	21.83	1
			18900	23.5	22.36	0	21.80	1
			18700	23.5	22.38	0	21.95	1
		1M	19100	23.5	22.92	0	22.21	1
			18900	23.5	22.88	0	22.22	1
			18700	23.5	22.91	0	22.35	1
	1L	19100	23.5	22.37	0	21.85	1	
		18900	23.5	22.38	0	21.85	1	
		18700	23.5	22.42	0	22.00	1	
	50H	19100	23.5	21.66	1	20.67	2	
		18900	23.5	21.78	1	20.71	2	
		18700	23.5	21.69	1	20.70	2	
	50M	19100	23.5	21.76	1	20.73	2	
		18900	23.5	21.75	1	20.72	2	
		18700	23.5	21.74	1	20.73	2	
	50L	19100	23.5	21.75	1	20.71	2	
		18900	23.5	21.75	1	20.70	2	
		18700	23.5	21.58	1	20.61	2	
	100	19100	23.5	21.69	1	20.69	2	
		18900	23.5	21.75	1	20.75	2	
		18700	23.5	21.67	1	20.62	2	

Table 11-7 LTE1700-FDD4 #1

LTE1700-FDD4 #1									
SN	BandWidth	RB No./Start	Channel	Tune-up	Measured Power (dBm) & MPR				
					QPSK		16QAM		
					Measured Power	MPR	Measured Power	MPR	
1.4MHz	1H		20393	23.5	22.57	0	21.65	1	
			20175	23.5	22.65	0	21.75	1	
			19957	23.5	22.72	0	22.05	1	
	1M		20393	23.5	22.71	0	21.75	1	
			20175	23.5	22.83	0	21.91	1	
			19957	23.5	22.89	0	22.20	1	
	1L		20393	23.5	22.56	0	21.62	1	
			20175	23.5	22.68	0	21.74	1	
			19957	23.5	22.72	0	22.05	1	
	3H		20393	23.5	22.65	0	21.85	1	
			20175	23.5	22.65	0	21.76	1	
			19957	23.5	22.74	0	21.94	1	
	3M		20393	23.5	22.70	0	21.90	1	
			20175	23.5	22.70	0	21.79	1	
			19957	23.5	22.82	0	21.96	1	
	3L		20393	23.5	22.61	0	21.84	1	
			20175	23.5	22.65	0	21.75	1	
			19957	23.5	22.75	0	21.92	1	
	6		20393	23.5	21.76	1	20.87	2	
			20175	23.5	21.77	1	20.87	2	
			19957	23.5	21.81	1	20.72	2	
	3MHz	1H		20385	23.5	22.62	0	21.60	1
				20175	23.5	22.65	0	21.58	1
				19965	23.5	22.79	0	22.11	1
		1M		20385	23.5	22.78	0	21.82	1
				20175	23.5	22.80	0	21.76	1
				19965	23.5	22.90	0	22.24	1
1L			20385	23.5	22.67	0	21.68	1	
			20175	23.5	22.65	0	21.63	1	
			19965	23.5	22.76	0	22.09	1	
8H			20385	23.5	21.70	1	20.70	2	
			20175	23.5	21.72	1	20.78	2	
			19965	23.5	21.79	1	20.82	2	
8M			20385	23.5	21.77	1	20.76	2	
			20175	23.5	21.79	1	20.84	2	
			19965	23.5	21.85	1	20.84	2	
8L			20385	23.5	21.73	1	20.73	2	
			20175	23.5	21.74	1	20.82	2	
			19965	23.5	21.82	1	20.85	2	
15			20385	23.5	21.68	1	20.62	2	
			20175	23.5	21.71	1	20.70	2	
			19965	23.5	21.75	1	20.75	2	
5MHz		1H		20375	23.5	22.59	0	21.68	1
				20175	23.5	22.63	0	21.77	1
				19975	23.5	22.64	0	22.12	1
		1M		20375	23.5	22.86	0	21.95	1
				20175	23.5	22.94	0	22.03	1
				19975	23.5	22.93	0	22.42	1
	1L		20375	23.5	22.58	0	21.65	1	
			20175	23.5	22.66	0	21.75	1	
			19975	23.5	22.64	0	22.11	1	
	12H		20375	23.5	21.62	1	20.68	2	
			20175	23.5	21.66	1	20.70	2	
			19975	23.5	21.80	1	20.92	2	
	12M		20375	23.5	21.73	1	20.79	2	
			20175	23.5	21.73	1	20.82	2	
			19975	23.5	21.81	1	20.90	2	
	12L		20375	23.5	21.72	1	20.77	2	
			20175	23.5	21.68	1	20.74	2	
			19975	23.5	21.70	1	20.84	2	
	25		20375	23.5	21.65	1	20.59	2	
			20175	23.5	21.68	1	20.65	2	
			19975	23.5	21.76	1	20.77	2	

10MHz	1H	20350	23.5	22.59	0	21.60	1	
		20175	23.5	22.58	0	21.59	1	
		20000	23.5	22.79	0	22.06	1	
	1M	20350	23.5	22.72	0	21.76	1	
		20175	23.5	22.72	0	21.71	1	
		20000	23.5	22.98	0	22.18	1	
	1L	20350	23.5	22.56	0	21.60	1	
		20175	23.5	22.62	0	21.56	1	
		20000	23.5	22.70	0	22.02	1	
	25H	20350	23.5	21.62	1	20.70	2	
		20175	23.5	21.77	1	20.65	2	
		20000	23.5	21.84	1	20.78	2	
	25M	20350	23.5	21.73	1	20.79	2	
		20175	23.5	21.74	1	20.75	2	
		20000	23.5	21.77	1	20.80	2	
	25L	20350	23.5	21.67	1	20.71	2	
		20175	23.5	21.74	1	20.73	2	
		20000	23.5	21.77	1	20.79	2	
	50	20350	23.5	21.68	1	20.65	2	
		20175	23.5	21.70	1	20.67	2	
		20000	23.5	21.83	1	20.82	2	
	15MHz	1H	20325	23.5	22.57	0	21.91	1
			20175	23.5	22.54	0	21.49	1
			20025	23.5	22.67	0	21.97	1
		1M	20325	23.5	22.70	0	22.11	1
			20175	23.5	22.68	0	21.66	1
			20025	23.5	22.78	0	22.10	1
1L		20325	23.5	22.60	0	21.99	1	
		20175	23.5	22.59	0	21.54	1	
		20025	23.5	22.69	0	21.99	1	
36H		20325	23.5	21.75	1	20.66	2	
		20175	23.5	21.76	1	20.71	2	
		20025	23.5	21.82	1	20.85	2	
36M		20325	23.5	21.74	1	20.69	2	
		20175	23.5	21.79	1	20.70	2	
		20025	23.5	21.82	1	20.84	2	
36L		20325	23.5	21.70	1	20.67	2	
		20175	23.5	21.78	1	20.72	2	
		20025	23.5	21.81	1	20.81	2	
75		20325	23.5	21.73	1	20.64	2	
		20175	23.5	21.75	1	20.70	2	
		20025	23.5	21.79	1	20.78	2	
20MHz		1H	20300	23.5	22.41	0	21.83	1
			20175	23.5	22.38	0	21.82	1
			20050	23.5	22.45	0	21.93	1
		1M	20300	23.5	22.83	0	22.26	1
			20175	23.5	22.79	0	22.19	1
			20050	23.5	22.91	0	22.42	1
	1L	20300	23.5	22.35	0	21.84	1	
		20175	23.5	22.43	0	21.87	1	
		20050	23.5	22.48	0	21.98	1	
	50H	20300	23.5	21.71	1	20.67	2	
		20175	23.5	21.68	1	20.63	2	
		20050	23.5	21.75	1	20.71	2	
	50M	20300	23.5	21.71	1	20.73	2	
		20175	23.5	21.73	1	20.64	2	
		20050	23.5	21.77	1	20.78	2	
	50L	20300	23.5	21.72	1	20.68	2	
		20175	23.5	21.78	1	20.75	2	
		20050	23.5	21.72	1	20.70	2	
	100	20300	23.5	21.69	1	20.70	2	
		20175	23.5	21.74	1	20.69	2	
		20050	23.5	21.70	1	20.72	2	

Table 11-8 LTE850-FDD5 #1

LTE850-FDD5 #1								
BandWidth	RB No./Start	Channel	Tune-up	Measured Power (dBm) & MPR				
				QPSK		16QAM		
				Measured Power	MPR	Measured Power	MPR	
1.4MHz	1H	20643	24	23.19	0	22.10	1	
		20525	24	23.20	0	22.16	1	
		20407	24	23.19	0	22.42	1	
	1M	20643	24	23.39	0	22.24	1	
		20525	24	23.33	0	22.34	1	
		20407	24	23.37	0	22.55	1	
	1L	20643	24	23.13	0	22.08	1	
		20525	24	23.24	0	22.16	1	
		20407	24	23.24	0	22.44	1	
	3H	20643	24	23.18	0	22.31	1	
		20525	24	23.19	0	22.19	1	
		20407	24	23.19	0	22.31	1	
	3M	20643	24	23.22	0	22.36	1	
		20525	24	23.22	0	22.21	1	
		20407	24	23.25	0	22.32	1	
	3L	20643	24	23.19	0	22.35	1	
		20525	24	23.17	0	22.19	1	
		20407	24	23.20	0	22.33	1	
	6	20643	24	22.32	1	21.38	2	
		20525	24	22.28	1	21.34	2	
		20407	24	22.26	1	21.11	2	
	3MHz	1H	20635	24	23.26	0	22.11	1
			20525	24	23.24	0	22.01	1
			20415	24	23.30	0	22.51	1
		1M	20635	24	23.36	0	22.24	1
			20525	24	23.36	0	22.16	1
			20415	24	23.42	0	22.62	1
1L		20635	24	23.25	0	22.22	1	
		20525	24	23.19	0	22.04	1	
		20415	24	23.30	0	22.46	1	
8H		20635	24	22.27	1	21.29	2	
		20525	24	22.24	1	21.27	2	
		20415	24	22.26	1	21.28	2	
8M		20635	24	22.30	1	21.32	2	
		20525	24	22.29	1	21.34	2	
		20415	24	22.28	1	21.32	2	
8L		20635	24	22.25	1	21.24	2	
		20525	24	22.23	1	21.28	2	
		20415	24	22.25	1	21.29	2	
15		20635	24	22.22	1	21.17	2	
		20525	24	22.18	1	21.22	2	
		20415	24	22.18	1	21.24	2	
5MHz		1H	20625	24	23.22	0	22.15	1
			20525	24	23.25	0	22.22	1
			20425	24	23.22	0	22.61	1
		1M	20625	24	23.42	0	22.40	1
			20525	24	23.47	0	22.46	1
			20425	24	23.41	0	22.78	1
	1L	20625	24	23.21	0	22.17	1	
		20525	24	23.22	0	22.23	1	
		20425	24	23.18	0	22.56	1	
	12H	20625	24	22.23	1	21.27	2	
		20525	24	22.12	1	21.21	2	
		20425	24	22.20	1	21.35	2	
	12M	20625	24	22.24	1	21.30	2	
		20525	24	22.18	1	21.29	2	
		20425	24	22.24	1	21.38	2	
	12L	20625	24	22.20	1	21.25	2	
		20525	24	22.18	1	21.24	2	
		20425	24	22.13	1	21.31	2	
	25	20625	24	22.22	1	21.17	2	
		20525	24	22.17	1	21.21	2	
		20425	24	22.22	1	21.26	2	



10MHz	1H	20600	24	23.24	0	22.14	1
		20525	24	23.28	0	22.07	1
		20450	24	23.30	0	22.51	1
	1M	20600	24	23.32	0	22.25	1
		20525	24	23.35	0	22.14	1
		20450	24	23.43	0	22.62	1
	1L	20600	24	23.21	0	22.14	1
		20525	24	23.20	0	21.99	1
		20450	24	23.25	0	22.42	1
	25H	20600	24	22.28	1	21.39	2
		20525	24	22.27	1	21.23	2
		20450	24	22.26	1	21.29	2
	25M	20600	24	22.29	1	21.36	2
		20525	24	22.21	1	21.24	2
		20450	24	22.26	1	21.27	2
	25L	20600	24	22.30	1	21.40	2
		20525	24	22.29	1	21.29	2
		20450	24	22.23	1	21.22	2
	50	20600	24	22.28	1	21.33	2
		20525	24	22.25	1	21.22	2
		20450	24	22.23	1	21.23	2

Table 11-9 LTE2500-FDD7 #1

LTE2500-FDD7 #1								
BandWidth	RB No./Start	Channel	Tune-up	Measured Power (dBm) & MPR				
				QPSK		16QAM		
				Measured Power	MPR	Measured Power	MPR	
5MHz	1H	21425	22.2	21.42	0	20.49	1	
		21100	22.2	21.49	0	20.56	1	
		20775	22.2	21.65	0	21.09	1	
	1M	21425	22.2	21.62	0	20.70	1	
		21100	22.2	21.74	0	20.80	1	
		20775	22.2	21.87	0	21.20	1	
	1L	21425	22.2	21.39	0	20.42	1	
		21100	22.2	21.53	0	20.60	1	
		20775	22.2	21.67	0	21.12	1	
	12H	21425	22.2	20.48	1	19.53	2	
		21100	22.2	20.49	1	19.59	2	
		20775	22.2	20.79	1	19.92	2	
	12M	21425	22.2	20.47	1	19.45	2	
		21100	22.2	20.53	1	19.59	2	
		20775	22.2	20.77	1	19.87	2	
	12L	21425	22.2	20.42	1	19.48	2	
		21100	22.2	20.47	1	19.52	2	
		20775	22.2	20.67	1	19.78	2	
	25	21425	22.2	20.45	1	19.35	2	
		21100	22.2	20.51	1	19.49	2	
		20775	22.2	20.75	1	19.79	2	
	10MHz	1H	21400	22.2	21.42	0	20.46	1
			21100	22.2	21.44	0	20.37	1
			20800	22.2	21.72	0	21.01	1
		1M	21400	22.2	21.50	0	20.53	1
			21100	22.2	21.62	0	20.57	1
			20800	22.2	21.87	0	21.16	1
1L		21400	22.2	21.39	0	20.44	1	
		21100	22.2	21.47	0	20.42	1	
		20800	22.2	21.75	0	21.04	1	
25H		21400	22.2	20.50	1	19.60	2	
		21100	22.2	20.68	1	19.55	2	
		20800	22.2	20.79	1	19.76	2	
25M		21400	22.2	20.46	1	19.54	2	
		21100	22.2	20.55	1	19.57	2	
		20800	22.2	20.72	1	19.75	2	
25L		21400	22.2	20.42	1	19.54	2	
		21100	22.2	20.53	1	19.51	2	
		20800	22.2	20.62	1	19.64	2	
50		21400	22.2	20.53	1	19.51	2	
		21100	22.2	20.59	1	19.54	2	
		20800	22.2	20.77	1	19.77	2	
15MHz		1H	21375	22.2	21.35	0	20.75	1
			21100	22.2	21.33	0	20.27	1
			20825	22.2	21.61	0	20.85	1
		1M	21375	22.2	21.44	0	20.85	1
			21100	22.2	21.50	0	20.43	1
			20825	22.2	21.75	0	21.01	1
	1L	21375	22.2	21.38	0	20.79	1	
		21100	22.2	21.46	0	20.34	1	
		20825	22.2	21.71	0	21.01	1	
	36H	21375	22.2	20.44	1	19.45	2	
		21100	22.2	20.54	1	19.50	2	
		20825	22.2	20.71	1	19.72	2	
	36M	21375	22.2	20.48	1	19.43	2	
		21100	22.2	20.52	1	19.44	2	
		20825	22.2	20.72	1	19.73	2	
	36L	21375	22.2	20.45	1	19.43	2	
		21100	22.2	20.54	1	19.50	2	
		20825	22.2	20.62	1	19.67	2	
	75	21375	22.2	20.48	1	19.43	2	
		21100	22.2	20.56	1	19.55	2	
		20825	22.2	20.65	1	19.62	2	



20MHz	1H	21350	22.2	21.15	0	20.63	1
		21100	22.2	21.15	0	20.56	1
		20850	22.2	21.35	0	20.84	1
	1M	21350	22.2	21.89	0	20.99	1
		21100	22.2	21.85	0	20.98	1
		20850	22.2	21.99	0	21.12	1
	1L	21350	22.2	21.14	0	20.65	1
		21100	22.2	21.29	0	20.69	1
		20850	22.2	21.48	0	20.96	1
	50H	21350	22.2	20.39	1	19.41	2
		21100	22.2	20.54	1	19.50	2
		20850	22.2	20.57	1	19.55	2
	50M	21350	22.2	20.44	1	19.44	2
		21100	22.2	20.53	1	19.48	2
		20850	22.2	20.62	1	19.61	2
	50L	21350	22.2	20.45	1	19.47	2
		21100	22.2	20.50	1	19.44	2
		20850	22.2	20.44	1	19.47	2
	100	21350	22.2	20.42	1	19.42	2
		21100	22.2	20.53	1	19.53	2
		20850	22.2	20.51	1	19.54	2

Table 11-10 LTE700-FDD12 #1

LTE700-FDD12 #1								
BandWidth	RB No./Start	Channel	Tune-up	Measured Power (dBm) & MPR				
				QPSK		16QAM		
				Measured Power	MPR	Measured Power	MPR	
1.4MHz	1H	23173	24	23.32	0	22.01	1	
		23095	24	23.22	0	22.15	1	
		23017	24	23.28	0	22.41	1	
	1M	23173	24	23.09	0	22.06	1	
		23095	24	23.35	0	22.31	1	
		23017	24	23.12	0	22.58	1	
	1L	23173	24	23.15	0	22.01	1	
		23095	24	23.25	0	22.16	1	
		23017	24	23.34	0	22.44	1	
	3H	23173	24	23.13	0	22.21	1	
		23095	24	23.27	0	22.11	1	
		23017	24	23.19	0	22.36	1	
	3M	23173	24	23.23	0	22.28	1	
		23095	24	23.23	0	22.15	1	
		23017	24	23.26	0	22.36	1	
	3L	23173	24	23.22	0	22.23	1	
		23095	24	23.19	0	22.14	1	
		23017	24	23.20	0	22.26	1	
	6	23173	24	22.31	1	21.33	2	
		23095	24	22.25	1	21.33	2	
		23017	24	22.30	1	21.06	2	
	3MHz	1H	23165	24	23.29	0	22.35	1
			23095	24	23.12	0	22.02	1
			23025	24	23.29	0	21.94	1
		1M	23165	24	23.40	0	22.50	1
			23095	24	23.22	0	22.22	1
			23025	24	23.19	0	22.11	1
1L		23165	24	23.22	0	22.34	1	
		23095	24	23.19	0	22.10	1	
		23025	24	23.27	0	22.00	1	
8H		23165	24	22.19	1	21.12	2	
		23095	24	22.15	1	21.11	2	
		23025	24	22.20	1	21.18	2	
8M		23165	24	22.25	1	21.20	2	
		23095	24	22.18	1	21.17	2	
		23025	24	22.22	1	21.27	2	
8L		23165	24	22.20	1	21.16	2	
		23095	24	22.17	1	21.14	2	
		23025	24	22.17	1	21.21	2	
15		23165	24	22.12	1	21.08	2	
		23095	24	22.12	1	21.02	2	
		23025	24	22.14	1	21.09	2	
5MHz		1H	23155	24	23.16	0	22.05	1
			23095	24	23.14	0	22.14	1
			23035	24	23.12	0	22.50	1
		1M	23155	24	23.29	0	22.24	1
			23095	24	23.38	0	22.37	1
			23035	24	23.35	0	22.72	1
	1L	23155	24	23.09	0	22.06	1	
		23095	24	23.17	0	22.14	1	
		23035	24	23.11	0	22.47	1	
	12H	23155	24	22.04	1	21.04	2	
		23095	24	22.12	1	21.15	2	
		23035	24	22.14	1	21.22	2	
	12M	23155	24	22.15	1	21.11	2	
		23095	24	22.14	1	21.19	2	
		23035	24	22.18	1	21.25	2	
	12L	23155	24	22.10	1	21.06	2	
		23095	24	22.13	1	21.13	2	
		23035	24	22.05	1	21.17	2	
	25	23155	24	22.08	1	20.97	2	
		23095	24	22.15	1	21.10	2	
		23035	24	22.08	1	21.10	2	



10MHz	1H	23130	24	23.20	0	22.00	1
		23095	24	23.16	0	21.97	1
		23060	24	23.19	0	22.41	1
	1M	23130	24	23.25	0	22.19	1
		23095	24	23.24	0	22.10	1
		23060	24	23.28	0	22.50	1
	1L	23130	24	23.08	0	22.03	1
		23095	24	23.10	0	21.89	1
		23060	24	23.21	0	22.40	1
	25H	23130	24	22.11	1	21.17	2
		23095	24	22.25	1	21.17	2
		23060	24	22.15	1	21.15	2
	25M	23130	24	22.17	1	21.21	2
		23095	24	22.20	1	21.14	2
		23060	24	22.16	1	21.18	2
	25L	23130	24	22.17	1	21.22	2
		23095	24	22.20	1	21.18	2
		23060	24	22.10	1	21.10	2
	50	23130	24	22.13	1	21.14	2
		23095	24	22.19	1	21.13	2
		23060	24	22.16	1	21.10	2

Table 11-11 LTE750-FDD13 #1

LTE750-FDD13 #1								
BandWidth	RB No./Start	Channel	Tune-up	Measured Power (dBm) & MPR				
				QPSK		16QAM		
				Measured Power	MPR	Measured Power	MPR	
5MHz	1H	23255	24	23.03	0	22.07	1	
		23230	24	22.98	0	22.12	1	
		23205	24	23.06	0	22.47	1	
	1M	23255	24	23.24	0	22.29	1	
		23230	24	23.26	0	22.35	1	
		23205	24	23.29	0	22.67	1	
	1L	23255	24	23.00	0	22.09	1	
		23230	24	22.98	0	22.08	1	
		23205	24	23.02	0	22.43	1	
	12H	23255	24	22.11	1	21.15	2	
		23230	24	22.12	1	21.14	2	
		23205	24	22.10	1	21.18	2	
	12M	23255	24	22.15	1	21.18	2	
		23230	24	22.14	1	21.23	2	
		23205	24	22.19	1	21.24	2	
	12L	23255	24	22.10	1	21.11	2	
		23230	24	22.11	1	21.16	2	
		23205	24	22.11	1	21.18	2	
	25	23255	24	22.10	1	21.02	2	
		23230	24	22.12	1	21.10	2	
		23205	24	22.09	1	21.13	2	
	10MHz	1H	23230	24	23.20	0	22.39	1
		1M	23230	24	23.37	0	22.49	1
		1L	23230	24	23.14	0	22.33	1
25H		23230	24	22.18	1	21.16	2	
25M		23230	24	22.19	1	21.19	2	
25L		23230	24	22.15	1	21.15	2	
50		23230	24	22.20	1	21.17	2	

11.4 Wi-Fi and BT Measurement result

Table 11-12 Bluetooth Power

Bluetooth Power				
Mode	Channel	Frequency	Tune-up	Measured
GFSK	78	2480 MHz	7	6.35
	39	2441 MHz	7	5.88
	0	2402 MHz	7	5.51
EDR2M-4_DQPSK	78	2480 MHz	6.5	5.23
	39	2441 MHz	6.5	4.79
	0	2402 MHz	6.5	4.53
EDR3M-8DPSK	78	2480 MHz	6	5.3
	39	2441 MHz	6	4.84
	0	2402 MHz	6	4.55

Table 11-13 WLAN2450 #1

Mode	Channel	Frequency	Data Rate	Tune-up	Measured	
802.11b	11	2462 MHz	1Mbps	16.50	15.50	
	6	2437 MHz		16.50	15.69	
	1	2412 MHz		16.50	15.37	
	802.11b	11	2462 MHz	2Mbps	/	/
		6	2437 MHz		16.50	15.55
		1	2412 MHz		/	/
	802.11b	11	2462 MHz	5.5Mbps	16.50	15.59
		6	2437 MHz		16.50	15.88
		1	2412 MHz		16.50	15.42
	802.11b	11	2462 MHz	11Mbps	/	/
		6	2437 MHz		16.50	15.80
		1	2412 MHz		/	/
802.11g	11	2462 MHz	6Mbps	15.50	13.59	
	6	2437 MHz		15.50	15.44	
	1	2412 MHz		15.50	13.57	
	802.11g	11	2462 MHz	9Mbps	/	/
		6	2437 MHz		15.50	15.41
		1	2412 MHz		/	/
	802.11g	11	2462 MHz	12Mbps	/	/
		6	2437 MHz		15.50	15.31
		1	2412 MHz		/	/
	802.11g	11	2462 MHz	18Mbps	15.50	13.51
		6	2437 MHz		15.50	15.46
		1	2412 MHz		15.50	13.56
	802.11g	11	2462 MHz	24Mbps	/	/
		6	2437 MHz		15.50	15.19
		1	2412 MHz		/	/
	802.11g	11	2462 MHz	36Mbps	/	/
		6	2437 MHz		15.50	15.09
		1	2412 MHz		/	/
	802.11g	11	2462 MHz	48Mbps	/	/
		6	2437 MHz		15.50	15.02
		1	2412 MHz		/	/
	802.11g	11	2462 MHz	54Mbps	/	/
		6	2437 MHz		15.50	14.97
		1	2412 MHz		/	/

802.11n 20M	11	2462 MHz	MCS0	15.00	13.12
	6	2437 MHz		15.00	14.68
	1	2412 MHz		15.00	13.43
	11	2462 MHz	MCS1	/	/
	6	2437 MHz		15.00	14.57
	1	2412 MHz		/	/
	11	2462 MHz	MCS2	/	/
	6	2437 MHz		15.00	14.46
	1	2412 MHz		/	/
	11	2462 MHz	MCS3	/	/
	6	2437 MHz		15.00	14.35
	1	2412 MHz		/	/
	11	2462 MHz	MCS4	/	/
	6	2437 MHz		15.00	13.73
	1	2412 MHz		/	/
11	2462 MHz	MCS5	/	/	
6	2437 MHz		14.00	13.11	
1	2412 MHz		/	/	
11	2462 MHz	MCS6	/	/	
6	2437 MHz		14.00	13.93	
1	2412 MHz		/	/	
11	2462 MHz	MCS7	/	/	
6	2437 MHz		14.00	13.96	
1	2412 MHz		/	/	
802.11n 40M	9	2452 MHz	MCS0	13.00	11.18
	6	2437 MHz		13.00	12.41
	3	2422 MHz		13.00	11.61
	9	2452 MHz	MCS1	/	/
	6	2437 MHz		13.00	12.08
	3	2422 MHz		/	/
	9	2452 MHz	MCS2	/	/
	6	2437 MHz		13.00	11.96
	3	2422 MHz		/	/
	9	2452 MHz	MCS3	/	/
	6	2437 MHz		13.00	11.80
	3	2422 MHz		/	/
	9	2452 MHz	MCS4	/	/
	6	2437 MHz		13.00	11.61
	3	2422 MHz		/	/
	9	2452 MHz	MCS5	/	/
	6	2437 MHz		12.00	11.67
	3	2422 MHz		/	/
	9	2452 MHz	MCS6	/	/
	6	2437 MHz		12.00	11.20
	3	2422 MHz		/	/
9	2452 MHz	MCS7	/	/	
6	2437 MHz		12.00	11.09	
3	2422 MHz		/	/	

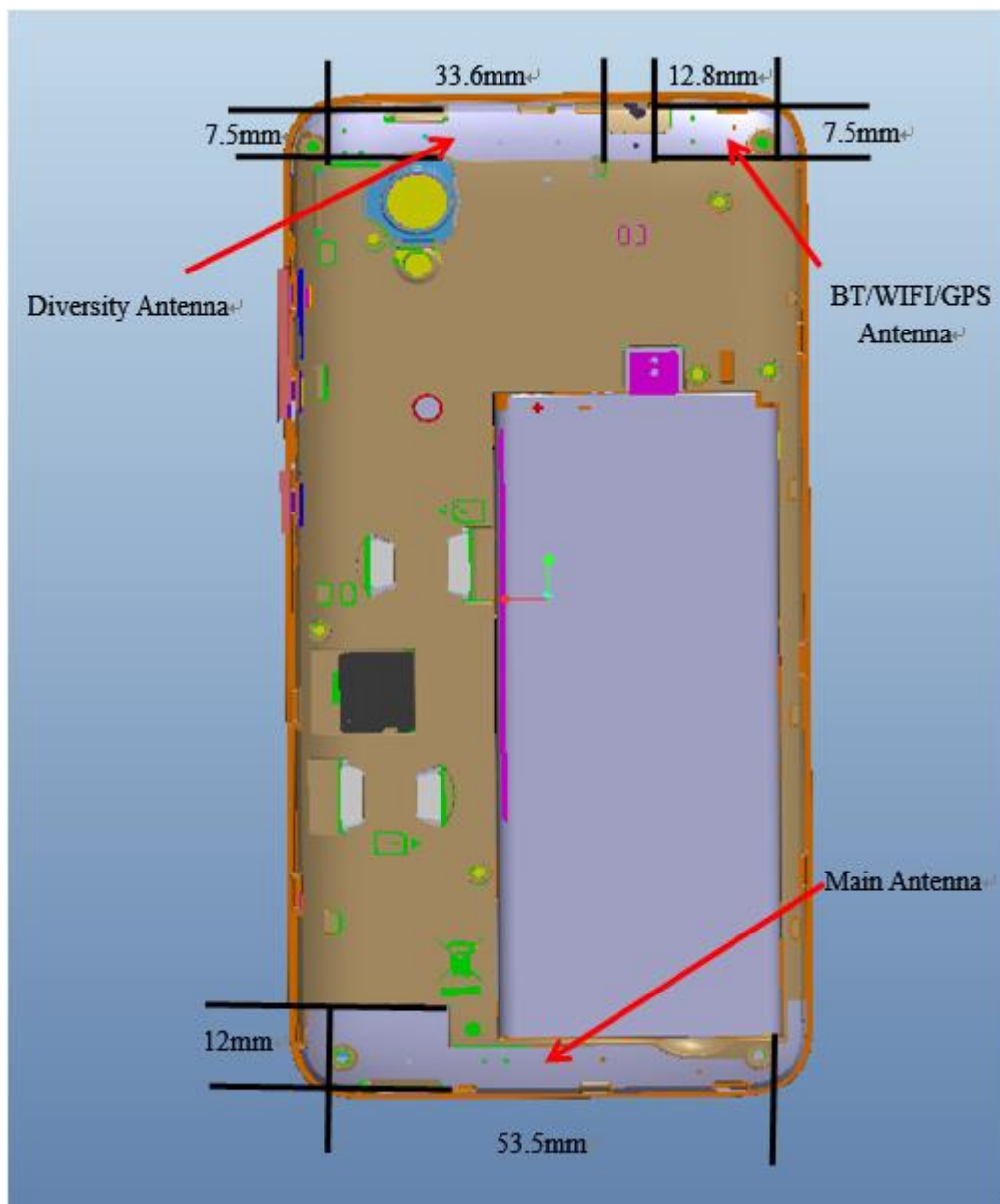
12 Simultaneous TX SAR Considerations

12.1 Introduction

The following procedures adopted from “FCC SAR Considerations for Cell Phones with Multiple Transmitters” are applicable to handsets with built-in unlicensed transmitters such as 802.11 a/b/g and Bluetooth devices which may simultaneously transmit with the licensed transmitter.

For this device, the BT and Wi-Fi can transmit simultaneous with other transmitters.

12.2 Transmit Antenna Separation Distances



Picture 12.1 Antenna Locations

12.3 SAR Measurement Positions

According to the KDB941225 D06 Hot Spot SAR v01, the edges with less than 2.5 cm distance to the antennas need to be tested for SAR.

SAR measurement positions						
Mode	Front	Rear	Left edge	Right edge	Top edge	Bottom edge
Main antenna	Yes	Yes	Yes	Yes	No	Yes
WLAN	Yes	Yes	Yes	No	Yes	No

12.4 Standalone SAR Test Exclusion Considerations

Standalone 1-g head or body SAR evaluation by measurement or numerical simulation is not required when the corresponding SAR Exclusion Threshold condition, listed below, is satisfied. The 1-g SAR test exclusion threshold for 100 MHz to 6 GHz at test separation distances ≤ 50 mm are determined by:

$[(\text{max. power of channel, including tune-up tolerance, mW}) / (\text{min. test separation distance, mm})] \cdot [\sqrt{f(\text{GHz})}] \leq 3.0$ for 1-g SAR, where

- $f(\text{GHz})$ is the RF channel transmit frequency in GHz
- Power and distance are rounded to the nearest mW and mm before calculation
- The result is rounded to one decimal place for comparison

Table 12.1: Standalone SAR test exclusion considerations

Band/Mode	F(GHz)	Position	SAR test exclusion threshold (mW)	RF output power		SAR test exclusion
				dBm	mW	
Bluetooth	2.441	Head	9.6	7	5.01	Yes
		Body	9.6	7	5.01	Yes
2.4GHz WLAN 802.11 b	2.45	Head	9.58	16.5	44.67	No
		Body	9.58	16.5	44.67	No

13 Evaluation of Simultaneous

Table 13.1: The sum of reported SAR values for main antenna and WiFi

	Position	Main antenna	WiFi	Sum
Highest reported SAR value for Head	Right hand, Touch cheek	0.39	0.99	1.38
Highest reported SAR value for Body	Rear	1.18	0.16	1.34

Table 13.2: The sum of reported SAR values for main antenna and BT

	Position	Main antenna	BT	Sum
Maximum reported SAR value for Head	Right hand, Touch cheek	0.39	0.21	0.60
Maximum reported SAR value for Body	Rear	1.18	0.10	1.28

[1] - Estimated SAR for Bluetooth (see the table 13.3)

Table 13.3: Estimated SAR for Bluetooth

Mode/Band	F (GHz)	Position	Distance (mm)	Upper limit of power *		Estimated _{1g} (W/kg)
				dBm	mW	
Bluetooth	2.441	Head	5	7	5.01	0.21
Bluetooth	2.441	Body	10	7	5.01	0.10

* - Maximum possible output power declared by manufacturer

When standalone SAR test exclusion applies to an antenna that transmits simultaneously with other antennas, the standalone SAR must be estimated according to following to determine simultaneous transmission SAR test exclusion:

(max. power of channel, including tune-up tolerance, mW)/(min. test separation distance, mm) · [$\sqrt{f(\text{GHz})/x}$] W/kg for test separation distances ≤ 50 mm;

where $x = 7.5$ for 1-g SAR.

When the minimum test separation distance is < 5 mm, a distance of 5 mm is applied to determine SAR test exclusion

Conclusion:

According to the above tables, the sum of reported SAR values is < 1.6 W/kg. So the simultaneous transmission SAR with volume scans is not required.

14 SAR Test Result

It is determined by user manual for the distance between the EUT and the phantom bottom.

The distance is 10 mm and just applied to the condition of body worn accessory.

It is performed for all SAR measurements with area scan based 1-g SAR estimation (Fast SAR). A zoom scan measurement is added when the estimated 1-g SAR is the highest measured SAR in each exposure configuration, wireless mode and frequency band combination or more than 1.2W/kg.

The calculated SAR is obtained by the following formula:

$$\text{Reported SAR} = \text{Measured SAR} \times 10^{(P_{\text{Target}} - P_{\text{Measured}})/10}$$

Where P_{Target} is the power of manufacturing upper limit;

P_{Measured} is the measured power in chapter 11.

Mode	Duty Cycle
Speech for GSM850/1900	1:8.3
GPRS&EGPRS for GSM850/1900	1:4
WCDMA<E	1:1

14.1 SAR results

Table 14-1 GSM850 #1 Head

GSM850 #1 Head									
Ambient Temperature:			22.5			Liquid Temperature:			22.3
Mode	Device orientation	SAR measurement	Measured SAR [W/kg]			Reported SAR [W/kg]			
			CH251 848.8 MHz	CH190 836.6 MHz	CH128 824.2 MHz	CH251 848.8 MHz	CH190 836.6 MHz	CH128 824.2 MHz	
GSM	Tune-up		33.30	33.30	33.30	Scaling factor*			
	Slot Average Power [dBm]		32.69	32.78	32.63	1.15	1.13	1.17	
	Left Cheek	1g SAR	0.34	0.305	0.31	0.39	0.34	0.36	
		10g SAR	0.254	0.248	0.228	0.29	0.28	0.27	
		Deviation	0.03	-0.03	0.05	0.03	-0.03	0.05	
	Left Tilt	1g SAR		0.211			0.24		
		10g SAR		0.158			0.18		
		Deviation		0.06			0.06		
	Right Cheek	1g SAR		0.255			0.29		
		10g SAR		0.191			0.22		
		Deviation		-0.06			-0.06		
	Right Tilt	1g SAR		0.118			0.13		
		10g SAR		0.089			0.10		
		Deviation		-0.02			-0.02		

Table 14-2 GSM850 #1 Body

GSM850 #1 Body									
Ambient Temperature:			22.5			Liquid Temperature:			22.3
Mode	Device orientation	SAR measurement	Measured SAR [W/kg]			Reported SAR [W/kg]			
			CH251 848.8 MHz	CH190 836.6 MHz	CH128 824.2 MHz	CH251 848.8 MHz	CH190 836.6 MHz	CH128 824.2 MHz	
GPRS 2 Txslots	Tune-up		30.50	30.50	30.50	Scaling factor*			
	Slot Average Power [dBm]		30.33	30.38	30.14	1.04	1.03	1.09	
	Front	1g SAR		0.296			0.30		
		10g SAR		0.305			0.31		
		Deviation		0.05			0.05		
	Rear	1g SAR	0.442	0.452	0.417	0.46	0.46	0.45	
		10g SAR	0.329	0.343	0.301	0.34	0.35	0.33	
		Deviation	0.06	-0.11	0.07	0.06	-0.11	0.07	
	Left edge	1g SAR		0.298			0.31		
		10g SAR		0.285			0.29		
		Deviation		-0.12			-0.12		
	Right edge	1g SAR		0.172			0.18		
		10g SAR		0.166			0.17		
		Deviation		0.02			0.02		
	Bottom edge	1g SAR		0.109			0.11		
10g SAR			0.089			0.09			
Deviation			0.06			0.06			
EGPRS GMSK 2 Txslots	Tune-up		30.50	30.50	30.50	Scaling factor*			
	Slot Average Power [dBm]		30.39	30.43	30.18	1.03	1.02	1.08	
	Rear	1g SAR		0.434			0.44		
		10g SAR		0.328			0.33		
		Deviation		0.08			0.08		

Table 14-3 PCS1900 #1 Head

PCS1900 #1 Head									
Ambient Temperature:			22.5			Liquid Temperature:			22.3
Mode	Device orientation	SAR measurement	Measured SAR [W/kg]			Reported SAR [W/kg]			
			CH810 1909.8	CH661 1880 MHz	CH512 1850.2	CH810 1909.8	CH661 1880 MHz	CH512 1850.2	
GSM	Tune-up		30.30	30.30	30.30	Scaling factor*			
	Slot Average Power [dBm]		29.99	30.01	29.90	1.07	1.07	1.10	
	Left Cheek	1g SAR		0.224			0.24		
		10g SAR		0.134			0.14		
		Deviation		0.03			0.03		
	Left Tilt	1g SAR		0.147			0.16		
		10g SAR		0.092			0.10		
		Deviation		-0.04			-0.04		
	Right Cheek	1g SAR	0.208	0.244	0.344	0.22	0.26	0.38	
		10g SAR	0.12	0.144	0.213	0.13	0.15	0.23	
		Deviation	-0.06	0.07	0.19	-0.06	0.07	0.19	
	Right Tilt	1g SAR		0.172			0.18		
		10g SAR		0.098			0.10		
		Deviation		0.03			0.03		

Table 14-4 PCS1900 #1 Body

PCS1900 #1 Body								
Ambient Temperature: 22.5					Liquid Temperature: 22.3			
Mode	Device orientation	SAR measurement	Measured SAR [W/kg]			Reported SAR [W/kg]		
			CH810 1909.8	CH661 1880 MHz	CH512 1850.2	CH810 1909.8	CH661 1880 MHz	CH512 1850.2
GPRS 2 Txslots	Tune-up		28.00	28.00	28.00	Scaling factor*		
	Slot Average Power [dBm]		27.36	27.73	27.59	1.16	1.07	1.10
	Front	1g SAR		0.714			0.76	
		10g SAR		0.257			0.27	
		Deviation		0.03			0.03	
	Rear	1g SAR	0.677	0.848	0.987	0.78	0.90	1.09
		10g SAR	0.278	0.484	0.539	0.32	0.52	0.59
		Deviation	0.08	0.04	0.05	0.08	0.04	0.05
	Left edge	1g SAR		0.205			0.22	
		10g SAR		0.089			0.09	
		Deviation		0.07			0.07	
	Right edge	1g SAR		0.164			0.17	
		10g SAR		0.073			0.08	
		Deviation		-0.03			-0.03	
	Bottom edge	1g SAR	0.783	0.846	0.933	0.91	0.90	1.03
10g SAR		0.384	0.436	0.482	0.44	0.46	0.53	
Deviation		0.08	0.06	0.02	0.08	0.06	0.02	
EGPRS GMSK 2 Txslots	Tune-up		28.00	28.00	28.00	Scaling factor*		
	Slot Average Power [dBm]		27.36	27.70	27.57	1.16	1.07	1.10
	Rear	1g SAR			0.987			1.09
		10g SAR			0.768			0.85
		Deviation			0.050			0.05

Table 14-5 WCDMA1900-BII #1Head

WCDMA1900-BII #1Head								
Ambient Temperature: 22.5					Liquid Temperature: 22.3			
Mode	Device orientation	SAR measurement	Measured SAR [W/kg]			Reported SAR [W/kg]		
			CH9538 1907.6 MHz	CH9400 1880 MHz	CH9262 1852.4 MHz	CH9538 1907.6 MHz	CH9400 1880 MHz	CH9262 1852.4 MHz
RMC	Tune-up		23.50	23.50	23.50	Scaling factor*		
	Slot Average Power [dBm]		23.25	23.32	23.45	1.06	1.04	1.01
	Left Cheek	1g SAR	0.169	0.199	0.225	0.18	0.21	0.23
		10g SAR	0.108	0.127	0.144	0.11	0.13	0.15
		Deviation	-0.03	0.08	0.07	-0.03	0.08	0.07
	Left Tilt	1g SAR		0.09			0.09	
		10g SAR		0.054			0.06	
		Deviation		-0.07			-0.07	
	Right Cheek	1g SAR		0.137			0.14	
		10g SAR		0.094			0.10	
		Deviation		0.02			0.02	
	Right Tilt	1g SAR		0.1			0.10	
		10g SAR		0.064			0.07	
		Deviation		0.05			0.05	

Table 14-6 WCDMA1900-BII #1Body

WCDMA1900-BII #1Body									
Ambient Temperature:			22.5			Liquid Temperature:			22.3
Mode	Device orientation	SAR measurement	Measured SAR [W/kg]			Reported SAR [W/kg]			
			CH9538 1907.6 MHz	CH9400 1880 MHz	CH9262 1852.4 MHz	CH9538 1907.6 MHz	CH9400 1880 MHz	CH9262 1852.4 MHz	
RMC	Tune-up		23.50	23.50	23.50	Scaling factor*			
	Slot Average Power [dBm]		23.25	23.32	23.45	1.06	1.04	1.01	
	Front	1g SAR		0.626			0.65		
		10g SAR		0.391			0.41		
		Deviation		0.04			0.04		
	Rear	1g SAR	0.908	1.03	1.04	0.96	1.07	1.05	
		10g SAR	0.482	0.744	0.777	0.51	0.78	0.79	
		Deviation	-0.04	-0.04	0.07	-0.04	-0.04	0.07	
	Left edge	1g SAR		0.207			0.22		
		10g SAR		0.106			0.11		
		Deviation		0.06			0.06		
	Right edge	1g SAR		0.137			0.14		
		10g SAR		0.083			0.09		
		Deviation		0.03			0.03		
	Bottom edge	1g SAR	1.03	1.11	1.18	1.09	1.16	1.19	
		10g SAR	0.72	0.762	0.623	0.76	0.79	0.63	
Deviation		-0.02	0.11	0.07	-0.02	0.11	0.07		

Table 14-7 WCDMA1700-BIV #1Head

WCDMA1700-BIV #1Head									
Ambient Temperature:			22.5			Liquid Temperature:			22.3
Mode	Device orientation	SAR measurement	Measured SAR [W/kg]			Reported SAR [W/kg]			
			CH1513 1752.6 MHz	CH1412 1732.4 MHz	CH1312 1712.4 MHz	CH1513 1752.6 MHz	CH1412 1732.4 MHz	CH1312 1712.4 MHz	
RMC	Tune-up		23.50	23.5	23.50	Scaling factor*			
	Slot Average Power [dBm]		23.11	23.12	23.14	1.09	1.09	1.09	
	Left Cheek	1g SAR	0.373	0.424	0.41	0.41	0.46	0.45	
		10g SAR	0.233	0.264	0.227	0.25	0.29	0.25	
		Deviation	0.03	0.05	0.06	0.03	0.05	0.06	
	Left Tilt	1g SAR		0.102			0.11		
		10g SAR		0.071			0.08		
		Deviation		-0.03			-0.03		
	Right Cheek	1g SAR		0.242			0.26		
		10g SAR		0.136			0.15		
		Deviation		0.07			0.07		
	Right Tilt	1g SAR		0.122			0.13		
		10g SAR		0.083			0.09		
		Deviation		0.05			0.05		

Table 14-8 WCDMA1700-BIV #1Body

WCDMA1700-BIV #1Body									
Ambient Temperature:			22.5			Liquid Temperature:			22.3
Mode	Device orientation	SAR measurement	Measured SAR [W/kg]			Reported SAR [W/kg]			
			CH1513 1752.6 MHz	CH1412 1732.4 MHz	CH1312 1712.4 MHz	CH1513 1752.6 MHz	CH1412 1732.4 MHz	CH1312 1712.4 MHz	
RMC	Tune-up		23.50	23.5	23.50	Scaling factor*			
	Slot Average Power [dBm]		23.11	23.12	23.14	1.09	1.09	1.09	
	Front	1g SAR	0.81	0.741	0.687	0.89	0.81	0.75	
		10g SAR	0.522	0.652	0.61	0.57	0.71	0.66	
		Deviation	0.02	0.06	0.03	0.02	0.06	0.03	
	Rear	1g SAR	1.023	1.08	0.845	1.12	1.18	0.92	
		10g SAR	0.613	0.614	0.664	0.67	0.67	0.72	
		Deviation	0.07	-0.03	0.01	0.07	-0.03	0.01	
	Left edge	1g SAR		0.146			0.16		
		10g SAR		0.092			0.10		
		Deviation		0.07			0.07		
	Right edge	1g SAR		0.303			0.33		
		10g SAR		0.186			0.20		
		Deviation		0.02			0.02		
	Bottom edge	1g SAR	0.782	0.75	0.679	0.86	0.82	0.74	
		10g SAR	0.612	0.424	0.402	0.67	0.46	0.44	
Deviation		0.09	0.05	0.01	0.09	0.05	0.01		

Table 14-9 WCDMA850-BV #1Head

WCDMA850-BV #1Head									
Ambient Temperature:			22.5			Liquid Temperature:			22.3
Mode	Device orientation	SAR measurement	Measured SAR [W/kg]			Reported SAR [W/kg]			
			CH4233 846.6 MHz	CH4182 835.4 MHz	CH4132 826.4 MHz	CH4233 846.6 MHz	CH4182 835.4 MHz	CH4132 826.4 MHz	
RMC	Tune-up		24.00	24.00	24.00	Scaling factor*			
	Slot Average Power [dBm]		23.34	23.40	23.41	1.16	1.15	1.15	
	Left Cheek	1g SAR	0.313	0.344	0.343	0.36	0.39	0.39	
		10g SAR	0.276	0.259	0.257	0.32	0.30	0.29	
		Deviation	-0.02	-0.08	0.06	-0.02	-0.08	0.06	
	Left Tilt	1g SAR		0.248			0.28		
		10g SAR		0.189			0.22		
		Deviation		0.03			0.03		
	Right Cheek	1g SAR		0.339			0.39		
		10g SAR		0.251			0.29		
		Deviation		0.07			0.07		
	Right Tilt	1g SAR		0.177			0.20		
		10g SAR		0.134			0.15		
		Deviation		0.04			0.04		

Table 14-10 WCDMA850-BV #1Body

WCDMA850-BV #1Body									
Ambient Temperature:			22.5			Liquid Temperature:			22.3
Mode	Device orientation	SAR measurement	Measured SAR [W/kg]			Reported SAR [W/kg]			
			CH4233 846.6 MHz	CH4182 835.4 MHz	CH4132 826.4 MHz	CH4233 846.6 MHz	CH4182 835.4 MHz	CH4132 826.4 MHz	
RMC	Tune-up		24.00	24.00	24.00	Scaling factor*			
	Slot Average Power [dBm]		23.34	23.40	23.41	1.16	1.15	1.15	
	Front	1g SAR		0.311			0.36		
		10g SAR		0.244			0.28		
		Deviation		0.06			0.06		
	Rear	1g SAR	0.377	0.364	0.356	0.44	0.42	0.41	
		10g SAR	0.288	0.285	0.276	0.34	0.33	0.32	
		Deviation	0.06	-0.05	0.08	0.06	-0.05	0.08	
	Left edge	1g SAR		0.338			0.39		
		10g SAR		0.233			0.27		
		Deviation		-0.03			-0.03		
	Right edge	1g SAR		0.203			0.23		
		10g SAR		0.145			0.17		
		Deviation		0.12			0.12		
	Bottom edge	1g SAR		0.125			0.14		
		10g SAR		0.076			0.09		
Deviation			-0.08			-0.08			

Table 14-11 LTE1900-FDD2 #1 Head

LTE1900-FDD2 #1 Head									
Ambient Temperature:			22.5			Liquid Temperature:			22.3
Mode	Device orientation	SAR measurement	Measured SAR [W/kg]			Reported SAR [W/kg]			
			19100	18900	18700	19100	18900	18700	
			M	M	M	M	M	M	
20MHz QPSK1RB	Tune-up		23.50	23.50	23.50	Scaling factor*			
	Measured Power [dBm]		22.92	22.88	22.91	1.14	1.15	1.15	
	Left Cheek	1g SAR	0.137			0.16			
		10g SAR	0.086			0.10			
		Deviation	0.06			0.06			
	Left Tilt	1g SAR	0.057			0.07			
		10g SAR	0.038			0.04			
		Deviation	0.08			0.08			
	Right Cheek	1g SAR	0.096			0.11			
		10g SAR	0.062			0.07			
		Deviation	-0.07			-0.07			
	Right Tilt	1g SAR	0.078			0.09			
		10g SAR	0.048			0.05			
		Deviation	0.01			0.01			
	TRUE	Device orientation	SAR measurement	Measured SAR [W/kg]			Reported SAR [W/kg]		
				19100	18900	18700	19100	18900	18700
M				H	M	M	H	M	
20MHz QPSK50% RB	Tune-up		22.50	22.50	22.50	Scaling factor*			
	Measured Power [dBm]		21.76	21.78	21.74	1.19	1.18	1.19	
	Left Cheek	1g SAR		0.112			0.13		
		10g SAR		0.07			0.08		
		Deviation		0.05			0.05		
	Left Tilt	1g SAR		0.05			0.06		
		10g SAR		0.031			0.04		
		Deviation		-0.03			-0.03		
	Right Cheek	1g SAR		0.114			0.13		
		10g SAR		0.07			0.08		
		Deviation		-0.12			-0.12		
	Right Tilt	1g SAR		0.053			0.06		
		10g SAR		0.033			0.04		
		Deviation		0.03			0.03		

Table 14-12 LTE1900-FDD2 #1 Body

LTE1900-FDD2 #1 Body								
Ambient Temperature: 22.5				Liquid Temperature: 22.3				
Mode	Device orientation	SAR measurement	Measured SAR [W/kg]			Reported SAR [W/kg]		
			19100	18900	18700	19100	18900	18700
			M	M	M	M	M	M
20MHz QPSK1RB	Tune-up		23.50	23.50	23.50	Scaling factor*		
	Measured Power [dBm]		22.92	22.88	22.91	1.14	1.15	1.15
	Front	1g SAR	0.695			0.79		
		10g SAR	0.314			0.36		
		Deviation	0.03			0.03		
	Rear	1g SAR	0.907	0.941	0.99	1.04	1.08	1.13
		10g SAR	0.491	0.491	0.771	0.56	0.57	0.88
		Deviation	0.03	0.07	-0.04	0.03	0.07	-0.04
	Left edge	1g SAR	0.212			0.24		
		10g SAR	0.123			0.14		
		Deviation	0.03			0.03		
	Right edge	1g SAR	0.164			0.19		
		10g SAR	0.097			0.11		
		Deviation	0.07			0.07		
Bottom edge	1g SAR	0.976	0.986	1.04	1.12	1.14	1.19	
	10g SAR	0.48	0.497	0.548	0.55	0.57	0.63	
	Deviation	-0.08	0.07	0.12	-0.08	0.07	0.12	
Mode	Device orientation	SAR measurement	Measured SAR [W/kg]			Reported SAR [W/kg]		
			19100	18900	18700	19100	18900	18700
			M	H	M			
20MHz QPSK50% RB	Tune-up		22.50	22.50	22.50	Scaling factor*		
	Measured Power [dBm]		21.76	21.78	21.74	1.19	1.18	1.19
	Front	1g SAR		0.498			0.59	
		10g SAR		0.317			0.37	
		Deviation		0.06			0.06	
	Rear	1g SAR	0.705	0.713	0.7	0.84	0.84	0.83
		10g SAR	0.337	0.384	0.31	0.40	0.45	0.37
		Deviation	0.06	0.04	0.11	0.06	0.04	0.11
	Left edge	1g SAR		0.187			0.22	
		10g SAR		0.109			0.13	
		Deviation		0.02			0.02	
	Right edge	1g SAR		0.172			0.20	
		10g SAR		0.089			0.11	
		Deviation		-0.03			-0.03	
Bottom edge	1g SAR	0.766	0.843	0.866	0.91	1.00	1.03	
	10g SAR	0.382	0.42	0.434	0.45	0.50	0.52	
	Deviation	-0.07	0.09	-0.01	-0.07	0.09	-0.01	
Mode	Device orientation	SAR measurement	Measured SAR [W/kg]			Reported SAR [W/kg]		
			19100	18900	18700	19100	18900	18700
20MHz QPSK100% RB	Tune-up		22.50	22.50	22.50	Scaling factor*		
	Measured Power [dBm]		21.69	21.75	21.67	1.20	1.19	1.21
	Bottom edge	1g SAR			0.661			0.80
		10g SAR			0.347			0.42
Deviation				0.06			0.06	
20MHz QPSK100% RB	Rear	1g SAR			0.653			0.75
		10g SAR			0.334			0.38
		Deviation			-0.02			-0.02

Table 14-13 LTE1700-FDD4 #1 Head

LTE1700-FDD4 #1 Head								
Ambient Temperature:		22.5			Liquid Temperature:			22.3
Mode	Device orientation	SAR measurement	Measured SAR [W/kg]			Reported SAR [W/kg]		
			20300	20175	20050	20300	20175	20050
			M	M	M	M	M	M
20MHz QPSK1RB	Tune-up		23.50	23.50	23.50	Scaling factor*		
	Measured Power [dBm]		22.83	22.79	22.91	1.17	1.18	1.15
	Left Cheek	1g SAR			0.292			0.33
		10g SAR			0.194			0.22
		Deviation			0.05			0.05
	Left Tilt	1g SAR			0.061			0.07
		10g SAR			0.058			0.07
		Deviation			-0.05			-0.05
	Right Cheek	1g SAR			0.165			0.19
		10g SAR			0.151			0.17
		Deviation			0.05			0.05
	Right Tilt	1g SAR			0.073			0.08
		10g SAR			0.067			0.08
		Deviation			0.06			0.06
TRUE	Device orientation	SAR measurement	Measured SAR [W/kg]			Reported SAR [W/kg]		
			20300	20175	20050	20300	20175	20050
			L	L	M	L	L	M
20MHz QPSK50% RB	Tune-up		22.50	22.50	22.50	Scaling factor*		
	Measured Power [dBm]		21.72	21.78	21.77	1.20	1.18	1.18
	Left Cheek	1g SAR		0.179			0.21	
		10g SAR		0.152			0.18	
		Deviation		0.02			0.02	
	Left Tilt	1g SAR		0.052			0.06	
		10g SAR		0.05			0.06	
		Deviation		0.08			0.08	
	Right Cheek	1g SAR		0.135			0.16	
		10g SAR		0.122			0.14	
		Deviation		0.02			0.02	
	Right Tilt	1g SAR		0.053			0.06	
		10g SAR		0.048			0.06	
		Deviation		-0.07			-0.07	

Table 14-14 LTE1700-FDD4 #1 Body

LTE1700-FDD4 #1 Body								
Ambient Temperature: 22.5						Liquid Temperature: 22.3		
Mode	Device orientation	SAR measurement	Measured SAR [W/kg]			Reported SAR [W/kg]		
			20300	20175	20050	20300	20175	20050
			M	M	M	M	M	M
20MHz QPSK1RB	Tune-up		23.50	23.50	23.50	Scaling factor*		
	Measured Power [dBm]		22.83	22.79	22.91	1.17	1.18	1.15
	Front	1g SAR			0.66			0.76
		10g SAR			0.568			0.65
		Deviation			0.04			0.04
	Rear	1g SAR	0.993	0.963	0.867	1.16	1.13	0.99
		10g SAR	0.569	0.547	0.485	0.66	0.64	0.56
		Deviation	-0.02	0.04	0.05	-0.02	0.04	0.05
	Left edge	1g SAR			0.119			0.14
		10g SAR			0.074			0.08
		Deviation			0.07			0.07
	Right edge	1g SAR			0.272			0.31
		10g SAR			0.16			0.18
		Deviation			-0.07			-0.07
	Bottom edge	1g SAR			0.673			0.77
10g SAR				0.358			0.41	
Deviation				0.04			0.04	
Mode	Device orientation	SAR measurement	Measured SAR [W/kg]			Reported SAR [W/kg]		
			20300	20175	20050	20300	20175	20050
			L	L	M			
20MHz QPSK50% RB	Tune-up		22.50	22.50	22.50	Scaling factor*		
	Measured Power [dBm]		21.72	21.78	21.77	1.20	1.18	1.18
	Front	1g SAR		0.457			0.54	
		10g SAR		0.289			0.34	
		Deviation		-0.06			-0.06	
	Rear	1g SAR		0.655			0.77	
		10g SAR		0.533			0.63	
		Deviation		-0.03			-0.03	
	Left edge	1g SAR		0.103			0.12	
		10g SAR		0.063			0.07	
		Deviation		0.07			0.07	
	Right edge	1g SAR		0.222			0.26	
		10g SAR		0.131			0.15	
		Deviation		0.08			0.08	
	Bottom edge	1g SAR		0.526			0.62	
10g SAR			0.279			0.33		
Deviation			0.06			0.06		
Mode	Device orientation	SAR measurement	Measured SAR [W/kg]			Reported SAR [W/kg]		
			20300	20175	20050	20300	20175	20050
20MHz QPSK100% RB	Tune-up		22.50	22.50	22.50	Scaling factor*		
	Measured Power [dBm]		21.69	21.74	21.70	1.21	1.19	1.20
	Rear	1g SAR	0.832			1.00		
		10g SAR	0.551			0.66		
Deviation		0.02			0.02			

Table 14-15 LTE850-FDD5 #1 Head

LTE850-FDD5 #1 Head								
Ambient Temperature: 22.5				Liquid Temperature: 22.3				
Mode	Device orientation	SAR measurement	Measured SAR [W/kg]			Reported SAR [W/kg]		
			20600	20525	20450	20600	20525	20450
			M	M	M	M	M	M
10MHz QPSK1RB	Tune-up		24.00	24.00	24.00	Scaling factor*		
	Measured Power [dBm]		23.32	23.35	23.43	1.17	1.16	1.14
	Left Cheek	1g SAR			0.315			0.36
		10g SAR			0.236			0.27
		Deviation			0.17			0.17
	Left Tilt	1g SAR			0.235			0.27
		10g SAR			0.165			0.19
		Deviation			0.03			0.03
	Right Cheek	1g SAR			0.257			0.29
		10g SAR			0.194			0.22
		Deviation			-0.06			-0.06
	Right Tilt	1g SAR			0.159			0.18
		10g SAR			0.121			0.14
		Deviation			-0.11			-0.11
TRUE	Device orientation	SAR measurement	Measured SAR [W/kg]			Reported SAR [W/kg]		
			20600	20525	20450	20600	20525	20450
			L	L	H	L	L	H
10MHz QPSK50% RB	Tune-up		23.00	23.00	23.00	Scaling factor*		
	Measured Power [dBm]		22.30	22.29	22.26	1.17	1.18	1.19
	Left Cheek	1g SAR	0.257			0.30		
		10g SAR	0.191			0.22		
		Deviation	-0.05			-0.05		
	Left Tilt	1g SAR	0.19			0.22		
		10g SAR	0.143			0.17		
		Deviation	0.03			0.03		
	Right Cheek	1g SAR	0.182			0.21		
		10g SAR	0.156			0.18		
		Deviation	-0.14			-0.14		
	Right Tilt	1g SAR	0.116			0.14		
		10g SAR	0.088			0.10		
		Deviation	0.08			0.08		

Table 14-16 LTE850-FDD5 #1 Body

LTE850-FDD5 #1 Body								
Ambient Temperature: 22.5			Liquid Temperature: 22.3					
Mode	Device orientation	SAR measurement	Measured SAR [W/kg]			Reported SAR [W/kg]		
			20600	20525	20450	20600	20525	20450
			M	M	M	M	M	M
10MHz QPSK1RB	Tune-up		24.00	24.00	24.00	Scaling factor*		
	Measured Power [dBm]		23.32	23.35	23.43	1.17	1.16	1.14
	Front	1g SAR			0.318			0.36
		10g SAR			0.259			0.30
		Deviation			0.03			0.03
	Rear	1g SAR			0.359			0.41
		10g SAR			0.274			0.31
		Deviation			0.02			0.02
	Left edge	1g SAR			0.332			0.38
		10g SAR			0.235			0.27
		Deviation			-0.05			-0.05
	Right edge	1g SAR			0.2			0.23
		10g SAR			0.141			0.16
		Deviation			0.06			0.06
	Bottom edge	1g SAR			0.12			0.14
10g SAR				0.071			0.08	
Deviation				0.08			0.08	
Mode	Device orientation	SAR measurement	Measured SAR [W/kg]			Reported SAR [W/kg]		
			20600	20525	20450	20600	20525	20450
			L	L	H			
10MHz QPSK50% RB	Tune-up		23.00	23.00	23.00	Scaling factor*		
	Measured Power [dBm]		22.30	22.29	22.26	1.17	1.18	1.19
	Front	1g SAR	0.247			0.29		
		10g SAR	0.188			0.22		
		Deviation	0.08			0.08		
	Rear	1g SAR	0.295			0.35		
		10g SAR	0.223			0.26		
		Deviation	-0.03			-0.03		
	Left edge	1g SAR	0.263			0.31		
		10g SAR	0.184			0.22		
		Deviation	0.07			0.07		
	Right edge	1g SAR	0.159			0.19		
		10g SAR	0.111			0.13		
		Deviation	0.09			0.09		
	Bottom edge	1g SAR	0.101			0.12		
10g SAR		0.059			0.07			
Deviation		0.06			0.06			



Table 14-17 LTE2500-FDD7 #1 Head

LTE2500-FDD7 #1 Head								
Ambient Temperature:		22.5			Liquid Temperature:			22.3
Mode	Device orientation	SAR measurement	Measured SAR [W/kg]			Reported SAR [W/kg]		
			21350	21100	20850	21350	21100	20850
			M	M	M	M	M	M
20MHz QPSK1RB	Tune-up		22.20	22.20	22.20	Scaling factor*		
	Measured Power [dBm]		21.89	21.85	21.99	1.07	1.08	1.05
	Left Cheek	1g SAR			0.103			0.11
		10g SAR			0.059			0.06
		Deviation			0.03			0.03
	Left Tilt	1g SAR			0.042			0.04
		10g SAR			0.022			0.02
		Deviation			-0.05			-0.05
	Right Cheek	1g SAR			0.187			0.20
		10g SAR			0.094			0.10
		Deviation			0.2			0.20
	Right Tilt	1g SAR			0.04			0.04
		10g SAR			0.022			0.02
		Deviation			-0.05			-0.05
TRUE	Device orientation	SAR measurement	Measured SAR [W/kg]			Reported SAR [W/kg]		
			21350	21100	20850	21350	21100	20850
			L	H	M	L	H	M
20MHz QPSK50% RB	Tune-up		21.20	21.20	21.20	Scaling factor*		
	Measured Power [dBm]		20.45	20.54	20.62	1.19	1.16	1.14
	Left Cheek	1g SAR			0.077			0.09
		10g SAR			0.044			0.05
		Deviation			-0.06			-0.06
	Left Tilt	1g SAR			0.023			0.03
		10g SAR			0.012			0.01
		Deviation			-0.09			-0.09
	Right Cheek	1g SAR			0.153			0.17
		10g SAR			0.081			0.09
		Deviation			0.01			0.01
	Right Tilt	1g SAR			0.015			0.02
		10g SAR			0.072			0.08
		Deviation			-0.12			-0.12

Table 14-18 LTE2500-FDD7 #1 Body

LTE2500-FDD7 #1 Body								
Ambient Temperature: 22.5				Liquid Temperature: 22.3				
Mode	Device orientation	SAR measurement	Measured SAR [W/kg]			Reported SAR [W/kg]		
			21350	21100	20850	21350	21100	20850
			M	M	M	M	M	M
20MHz QPSK1RB	Tune-up		22.20	22.20	22.20	Scaling factor*		
	Measured Power [dBm]		21.89	21.85	21.99	1.07	1.08	1.05
	Front	1g SAR			0.552			0.58
		10g SAR			0.261			0.27
		Deviation			0.09			0.09
	Rear	1g SAR			0.753			0.79
		10g SAR			0.341			0.36
		Deviation			0.06			0.06
	Left edge	1g SAR			0.201			0.21
		10g SAR			0.105			0.11
		Deviation			0.09			0.09
	Right edge	1g SAR			0.054			0.06
		10g SAR			0.032			0.03
		Deviation			0.07			0.07
	Bottom edge	1g SAR	1.11	1	1.06	1.19	1.08	1.11
10g SAR		0.52	0.476	0.513	0.56	0.52	0.54	
Deviation		-0.05	0.06	0.04	-0.05	0.06	0.04	
Mode	Device orientation	SAR measurement	Measured SAR [W/kg]			Reported SAR [W/kg]		
			21350	21100	20850	21350	21100	20850
			L	H	M			
20MHz QPSK50% RB	Tune-up		21.20	21.20	21.20	Scaling factor*		
	Measured Power [dBm]		20.45	20.54	20.62	1.19	1.16	1.14
	Front	1g SAR			0.424			0.48
		10g SAR			0.2			0.23
		Deviation			-0.05			-0.05
	Rear	1g SAR			0.648			0.74
		10g SAR			0.299			0.34
		Deviation			0.06			0.06
	Left edge	1g SAR			0.161			0.18
		10g SAR			0.081			0.09
		Deviation			0.02			0.02
	Right edge	1g SAR			0.044			0.05
		10g SAR			0.025			0.03
		Deviation			0.03			0.03
	Bottom edge	1g SAR	0.897	0.899	0.74	1.07	1.05	0.84
10g SAR		0.409	0.411	0.36	0.49	0.48	0.41	
Deviation		0.14	0.05	0.07	0.14	0.05	0.07	
Mode	Device orientation	SAR measurement	Measured SAR [W/kg]			Reported SAR [W/kg]		
			21350	21100	20850	21350	21100	20850
20MHz QPSK100% RB	Tune-up		21.20	21.20	21.20	Scaling factor*		
	Measured Power [dBm]		20.42	20.53	20.51	1.20	1.17	1.17
	Bottom edge	1g SAR	0.636			0.76		
		10g SAR	0.292			0.35		
	Deviation	0.03			0.03			

Table 14-19 LTE700-FDD12 #1 Head

LTE700-FDD12 #1 Head								
Ambient Temperature:		22.5			Liquid Temperature:			22.3
Mode	Device orientation	SAR measurement	Measured SAR [W/kg]			Reported SAR [W/kg]		
			23130	23095	23060	23130	23095	23060
			M	M	M	M	M	M
10MHz QPSK1RB	Tune-up		24.00	24.00	24.00	Scaling factor*		
	Measured Power [dBm]		23.25	23.24	23.28	1.19	1.19	1.18
	Left Cheek	1g SAR			0.126			0.15
		10g SAR			0.145			0.17
		Deviation			0.07			0.07
	Left Tilt	1g SAR			0.07			0.08
		10g SAR			0.082			0.10
		Deviation			-0.02			-0.02
	Right Cheek	1g SAR			0.186			0.22
		10g SAR			0.145			0.17
		Deviation			-0.05			-0.05
	Right Tilt	1g SAR			0.055			0.06
		10g SAR			0.088			0.10
		Deviation			0.06			0.06
TRUE	Device orientation	SAR measurement	Measured SAR [W/kg]			Reported SAR [W/kg]		
			23130	23095	23060	23130	23095	23060
			M	H	M	M	H	M
10MHz QPSK50% RB	Tune-up		23.00	23.00	23.00	Scaling factor*		
	Measured Power [dBm]		22.17	22.25	22.16	1.21	1.19	1.21
	Left Cheek	1g SAR		0.077			0.09	
		10g SAR		0.088			0.10	
		Deviation		0.04			0.04	
	Left Tilt	1g SAR		0.047			0.06	
		10g SAR		0.079			0.09	
		Deviation		-0.02			-0.02	
	Right Cheek	1g SAR		0.072			0.09	
		10g SAR		0.083			0.10	
		Deviation		0.06			0.06	
	Right Tilt	1g SAR		0.056			0.07	
		10g SAR		0.089			0.11	
		Deviation		0.03			0.03	

Table 14-20 LTE700-FDD12 #1 Body

LTE700-FDD12 #1 Body								
Ambient Temperature: 22.5			Liquid Temperature: 22.3					
Mode	Device orientation	SAR measurement	Measured SAR [W/kg]			Reported SAR [W/kg]		
			23130	23095	23060	23130	23095	23060
			M	M	M	M	M	M
10MHz QPSK1RB	Tune-up		24.00	24.00	24.00	Scaling factor*		
	Measured Power [dBm]		23.25	23.24	23.28	1.19	1.19	1.18
	Front	1g SAR			0.202			0.24
		10g SAR			0.155			0.18
		Deviation			0.04			0.04
	Rear	1g SAR			0.257			0.30
		10g SAR			0.196			0.23
		Deviation			-0.13			-0.13
	Left edge	1g SAR			0.145			0.17
		10g SAR			0.105			0.12
		Deviation			0.09			0.09
	Right edge	1g SAR			0.122			0.14
		10g SAR			0.087			0.10
		Deviation			0.03			0.03
	Bottom edge	1g SAR			0.072			0.09
10g SAR				0.043			0.05	
Deviation				0.03			0.03	
Mode	Device orientation	SAR measurement	Measured SAR [W/kg]			Reported SAR [W/kg]		
			23130	23095	23060	23130	23095	23060
			M	H	M			
10MHz QPSK50% RB	Tune-up		23.00	23.00	23.00	Scaling factor*		
	Measured Power [dBm]		22.17	22.25	22.16	1.21	1.19	1.21
	Front	1g SAR		0.167			0.20	
		10g SAR		0.128			0.15	
		Deviation		0.03			0.03	
	Rear	1g SAR		0.203			0.24	
		10g SAR		0.155			0.18	
		Deviation		0.05			0.05	
	Left edge	1g SAR		0.127			0.15	
		10g SAR		0.092			0.11	
		Deviation		0.07			0.07	
	Right edge	1g SAR		0.091			0.11	
		10g SAR		0.088			0.10	
		Deviation		0.05			0.05	
	Bottom edge	1g SAR		0.075			0.09	
10g SAR			0.033			0.04		
Deviation			-0.05			-0.05		



Table 14-21 LTE750-FDD13 #1 Head

LTE750-FDD13 #1 Head				
Ambient Temperature:		22.5		22.3
Mode	Device orientation	SAR measurement	Measured SAR [W/kg]	Reported SAR [W/kg]
			23230	23230
			M	M
10MHz QPSK1RB	Tune-up		24.00	Scaling factor*
	Measured Power [dBm]		23.37	1.16
	Left Cheek	1g SAR	0.294	0.34
		10g SAR	0.223	0.26
		Deviation	0.19	0.19
	Left Tilt	1g SAR	0.201	0.23
		10g SAR	0.151	0.17
		Deviation	0.02	0.02
	Right Cheek	1g SAR	0.283	0.33
		10g SAR	0.215	0.25
		Deviation	0.11	0.11
	Right Tilt	1g SAR	0.227	0.26
		10g SAR	0.175	0.20
		Deviation	0.01	0.01
	TRUE	Device orientation	SAR measurement	Measured SAR [W/kg]
23230				23230
			M	M
10MHz QPSK50% RB	Tune-up		23.00	Scaling factor*
	Measured Power [dBm]		22.19	1.21
	Left Cheek	1g SAR	0.235	0.28
		10g SAR	0.178	0.21
		Deviation	0.13	0.13
	Left Tilt	1g SAR	0.178	0.21
		10g SAR	0.12	0.14
		Deviation	0.08	0.08
	Right Cheek	1g SAR	0.223	0.27
		10g SAR	0.189	0.23
		Deviation	0.13	0.13
	Right Tilt	1g SAR	0.175	0.21
		10g SAR	135	162.84
		Deviation	0.09	0.09

Table 14-22 LTE750-FDD13 #1 Body

LTE750-FDD13 #1 Body				
Ambient Temperature:			22.5	22.3
Mode	Device orientation	SAR measurement	Measured SAR [W/kg]	Reported SAR [W/kg]
			23230	23230
			M	M
10MHz QPSK1RB	Tune-up		24.00	Scaling factor*
	Measured Power [dBm]		23.37	1.16
	Front	1g SAR	0.274	0.32
		10g SAR	0.22	0.25
		Deviation	-0.07	-0.07
	Rear	1g SAR	0.322	0.37
		10g SAR	0.246	0.28
		Deviation	0.09	0.09
	Left edge	1g SAR	0.288	0.33
		10g SAR	0.222	0.26
		Deviation	0.14	0.14
	Right edge	1g SAR	0.17	0.20
		10g SAR	0.129	0.15
		Deviation	0.12	0.12
	Bottom edge	1g SAR	0.093	0.11
10g SAR		0.078	0.09	
Deviation		-0.02	-0.02	
Mode	Device orientation	SAR measurement	Measured SAR [W/kg]	Reported SAR [W/kg]
			23230	23230
			M	
10MHz QPSK50% RB	Tune-up		23.00	Scaling factor*
	Measured Power [dBm]		22.19	1.21
	Front	1g SAR	0.229	0.28
		10g SAR	0.183	0.22
		Deviation	0.02	0.02
	Rear	1g SAR	0.254	0.31
		10g SAR	0.205	0.25
		Deviation	0.07	0.07
	Left edge	1g SAR	0.241	0.29
		10g SAR	0.185	0.22
		Deviation	0.04	0.04
	Right edge	1g SAR	0.142	0.17
		10g SAR	0.108	0.13
		Deviation	-0.03	-0.03
	Bottom edge	1g SAR	0.075	0.09
10g SAR		0.047	0.06	
Deviation		-0.08	-0.08	



14.2 Full SAR

Test Band	Channel	Frequency	Tune-Up	Measured Power	Test Position	Measured 10g SAR	Measured 1g SAR	Reported 10g SAR	Reported 1g SAR	Power Drift	Figure
GSM850	251	848.8 MHz	33.3	32.69	Left Cheek	0.254	0.34	0.29	0.39	0.03	Fig A.1
GSM850	190	836.6 MHz	30.5	30.38	Rear	0.343	0.452	0.35	0.46	-0.11	Fig A.2
PCS1900	512	1850.2 MHz	30.3	29.90	Right Cheek	0.213	0.344	0.23	0.38	0.19	Fig A.3
PCS1900	512	1850.2 MHz	28	27.59	Rear	0.539	0.987	0.59	1.09	0.05	Fig A.4
WCDMA1900-BII	9262	1852.4 MHz	23.5	23.45	Left Cheek	0.144	0.225	0.15	0.23	0.07	Fig A.5
WCDMA1900-BII	9262	1852.4 MHz	23.5	23.45	Bottom edge	0.623	1.18	0.63	1.19	0.07	Fig A.6
WCDMA1700-BIV	1412	1732.4 MHz	23.5	23.12	Left Cheek	0.264	0.424	0.29	0.46	0.05	Fig A.7
WCDMA1700-BIV	1412	1732.4 MHz	23.5	23.12	Rear	0.614	1.08	0.67	1.18	-0.03	Fig A.8
WCDMA850-BV	4182	835.4 MHz	24	23.40	Left Cheek	0.259	0.344	0.30	0.39	-0.08	Fig A.9
WCDMA850-BV	4233	846.6 MHz	24	23.34	Rear	0.288	0.377	0.34	0.44	0.06	Fig A.10
LTE1900-FDD2	19100	1900 MHz	23.5	22.92	Left Cheek	0.086	0.137	0.10	0.16	0.06	Fig A.11
LTE1900-FDD2	18700	1860 MHz	23.5	22.91	Bottom edge	0.548	1.04	0.63	1.19	0.12	Fig A.12
LTE1700-FDD4	20050	1720 MHz	23.5	22.91	Left Cheek	0.194	0.292	0.22	0.33	0.05	Fig A.13
LTE1700-FDD4	20300	1745 MHz	23.5	22.83	Rear	0.569	0.993	0.66	1.16	-0.02	Fig A.14
LTE850-FDD5	20450	829 MHz	24	23.43	Left Cheek	0.236	0.315	0.27	0.36	0.17	Fig A.15
LTE850-FDD5	20450	829 MHz	24	23.43	Rear	0.274	0.359	0.31	0.41	0.02	Fig A.16
LTE2500-FDD7	20850	2510 MHz	22.2	21.99	Right Cheek	0.094	0.187	0.10	0.20	0.2	Fig A.17
LTE2500-FDD7	21350	2560 MHz	22.2	21.89	Bottom edge	0.52	1.11	0.56	1.19	-0.05	Fig A.18
LTE700-FDD12	23060	704 MHz	24	23.28	Right Cheek	0.145	0.186	0.17	0.22	-0.05	Fig A.19
LTE700-FDD12	23060	704 MHz	24	23.28	Rear	0.196	0.257	0.23	0.30	-0.13	Fig A.20
LTE750-FDD13	23230	782 MHz	24	23.37	Left Cheek	0.223	0.294	0.26	0.34	0.19	Fig A.21
LTE750-FDD13	23230	782 MHz	24	23.37	Rear	0.246	0.322	0.28	0.37	0.09	Fig A.22

14.3 WLAN Evaluation

According to the KDB248227 D01, SAR is measured for 802.11b DSSS using the initial test position procedure.

Note1: When the reported SAR of the initial test position is > 0.4 W/kg, SAR is repeated for the 802.11 transmission mode configuration tested in the initial test position using subsequent highest estimated 1-g SAR conditions determined by area scans, on the highest maximum output power channel, until the reported SAR is ≤ 0.8 W/kg.

Note2: For all positions/configurations tested using the initial test position and subsequent test positions, when the reported SAR is > 0.8 W/kg, SAR is measured for these test positions/configurations on the subsequent next highest measured output power channel until the reported SAR is ≤ 1.2 W/kg or all required channels are tested.

Note3: According to the KDB248227 D01, The reported SAR must be scaled to 100% transmission duty factor to determine compliance at the maximum tune-up tolerance limit.

Table 14-23 WLAN2450 #1 Head Fast SAR

WLAN2450 #1								
Ambient Temperature: 22.5				Liquid Temperature: 22.3				
Rate	Device orientation	SAR measurement	Measured SAR [W/kg]			Reported SAR [W/kg]		
			11 2462 MHz	6 2437 MHz	1 2412 MHz	11	6	1
802.11b 1Mbps	Tune up		16.5	16.5	16.5	Scaling factor*		
	Slot Average Power [dBm]		15.50	15.69	15.37	1.26	1.21	1.30
	Left Cheek	1g Fast SAR		0.481			0.58	
		10g SAR		0.278			0.33	
		Deviation		0.09			0.09	
	Left Tilt	1g Fast SAR		0.353			0.43	
		10g SAR		0.192			0.23	
		Deviation		0.05			0.05	
	Right Cheek	1g Fast SAR		0.745			0.90	
		10g SAR		0.4			0.48	
		Deviation		0.01			0.01	
	Right Tilt	1g Fast SAR		0.566			0.68	
		10g SAR		0.263			0.32	
		Deviation		0.06			0.06	

Table 14-24 WLAN2450 #1 Head Full SAR

WLAN2450 #1 Head Full SAR								
Ambient Temperature: 22.5				Liquid Temperature: 22.3				
Rate	Device orientation	SAR measurement	Measured SAR [W/kg]			Reported SAR [W/kg]		
			11 2462 MHz	6 2437 MHz	1 2412 MHz	11	6	1
802.11b 1Mbps	Tune up		16.5	16.5	16.5	Scaling factor*		
	Slot Average Power [dBm]		15.50	15.69	15.37	1.26	1.21	1.30
	Right Cheek	1g Full SAR	0.779	0.818		0.98	0.99	
		10g SAR	0.384	0.412		0.48	0.50	
		Deviation	0.04	0.01		0.04	0.01	
	Right Tilt	1g Full SAR		0.589			0.71	
		10g SAR		0.304			0.37	
		Deviation		0.01			0.01	



Table 14-25 WLAN2450 #1 Body Fast SAR

WLAN2450 #1 Body Fast SAR								
Ambient Temperature: 22.5				Liquid Temperature: 22.3				
Rate	Device orientation	SAR measurement	Measured SAR [W/kg]			Reported SAR [W/kg]		
			11 2462 MHz	6 2437 MHz	1 2412 MHz	11	6	1
802.11b 1Mbps	Tune up		16.5	16.5	16.5	Scaling factor*		
	Slot Average Power [dBm]		15.50	15.69	15.37	1.26	1.21	1.30
	Front	1g Fast SAR		0.104			0.13	
		10g SAR		0.045			0.05	
		Deviation		0.05			0.05	
	Rear	1g Fast SAR		0.128			0.15	
		10g SAR		0.063			0.08	
		Deviation		0.19			0.19	
	Top edge	1g Fast SAR		0.058			0.07	
		10g SAR		0.014			0.02	
		Deviation		0.02			0.02	
	Right edge	1g Fast SAR		0.042			0.05	
		10g SAR		0.009			0.01	
		Deviation		-0.01			-0.01	

Table 14-26 WLAN2450 #1 Body Full SAR

WLAN2450 #1 Body Full SAR								
Ambient Temperature: 22.5				Liquid Temperature: 22.3				
Rate	Device orientation	SAR measurement	Measured SAR [W/kg]			Reported SAR [W/kg]		
			11 2462 MHz	6 2437 MHz	1 2412 MHz	11	6	1
802.11b 1Mbps	Tune up		16.5	16.5	16.5	Scaling factor*		
	Slot Average Power [dBm]		15.50	15.69	15.37	1.26	1.21	1.30
	Rear	1g Full SAR		0.129			0.16	
		10g SAR		0.064			0.08	
		Deviation		0.19			0.19	

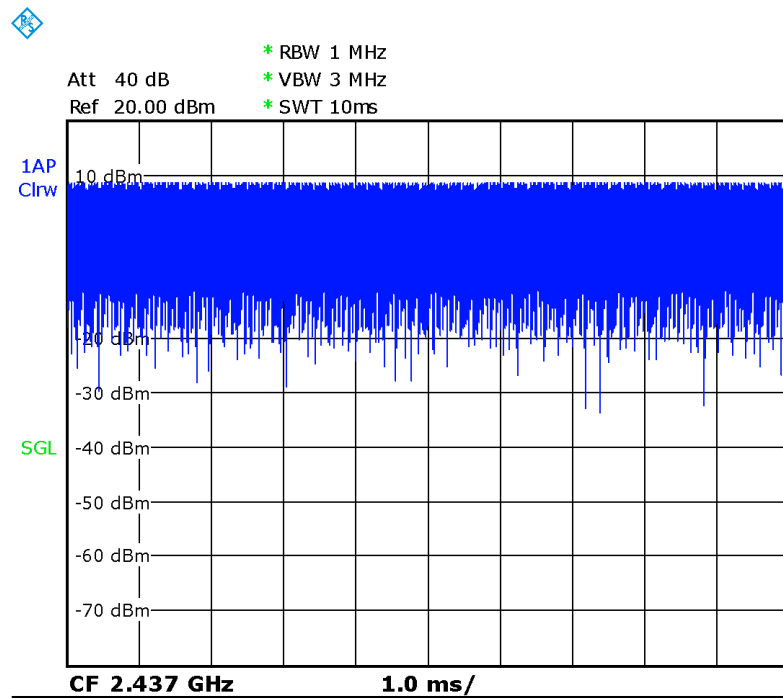
According to the KDB248227 D01, The reported SAR must be scaled to 100% transmission duty factor to determine compliance at the maximum tune-up tolerance limit. The scaled reported SAR is presented as below

Frequency		Test Position	Actual duty factor	maximum duty factor	Reported SAR(1g)(W/kg)	Scaled reported SAR(1g)(W/kg)	Figure
MHz	Ch.						
2437	6	Right Cheek	100.00%	100.00%	0.99	0.99	Fig.23

According to the KDB248227 D01, The reported SAR must be scaled to 100% transmission duty factor to determine compliance at the maximum tune-up tolerance limit. The scaled reported SAR is presented as below

Frequency		Test Position	Actual duty factor	maximum duty factor	Reported SAR(1g)(W/kg)	Scaled reported SAR(1g)(W/kg)	Figure
MHz	Ch.						
2437	6	Rear	100.00%	100.00%	0.16	0.16	Fig.24

SAR is not required for OFDM because the 802.11b adjusted SAR \leq 1.2 W/kg.



Picture 14.1 Duty factor plot

15 SAR Measurement Variability

SAR measurement variability must be assessed for each frequency band, which is determined by the SAR probe calibration point and tissue-equivalent medium used for the device measurements. When both head and body tissue-equivalent media are required for SAR measurements in a frequency band, the variability measurement procedures should be applied to the tissue medium with the highest measured SAR, using the highest measured SAR configuration for that tissue-equivalent medium.

The following procedures are applied to determine if repeated measurements are required.

- 1) Repeated measurement is not required when the original highest measured SAR is < 0.80 W/kg; steps 2) through 4) do not apply.
- 2) When the original highest measured SAR is ≥ 0.80 W/kg, repeat that measurement once.
- 3) Perform a second repeated measurement only if the ratio of largest to smallest SAR for the original and first repeated measurements is > 1.20 or when the original or repeated measurement is ≥ 1.45 W/kg (~ 10% from the 1-g SAR limit).
- 4) Perform a third repeated measurement only if the original, first or second repeated measurement is ≥ 1.5 W/kg and the ratio of largest to smallest SAR for the original, first and second repeated measurements is > 1.20 .

Mode	CH	Freq	Test Position	Original SAR (W/kg)	First Repeated SAR(W/kg)	The Ratio
PCS1900	512	1850.2 MHz	Rear	0.987	0.979	1.01
WCDMA1900-B1I	9262	1852.4 MHz	Bottom edge	1.18	1.16	1.02
WCDMA1700-B1V	1412	1732.4 MHz	Rear	1.08	1.06	1.02
LTE1900-FDD2	18700	1860 MHz	Bottom edge	1.04	1.02	1.02
LTE1700-FDD4	20300	1745 MHz	Rear	0.993	0.992	1.00
LTE2500-FDD7	21350	2560 MHz	Bottom edge	1.11	1.09	1.02
WLAN2450	6	2437 MHz	Right Cheek	0.818	0.809	1.01

16 Measurement Uncertainty

16.1 Measurement Uncertainty for Normal SAR Tests (300MHz~3GHz)

No.	Error Description	Type	Uncertainty value	Probably Distribution	Div.	(Ci) 1g	(Ci) 10g	Std. Unc. (1g)	Std. Unc. (10g)	Degree of freedom
Measurement system										
1	Probe calibration	B	6.0	N	1	1	1	6.0	6.0	∞
2	Isotropy	B	4.7	R	$\sqrt{3}$	0.7	0.7	1.9	1.9	∞
3	Boundary effect	B	1.0	R	$\sqrt{3}$	1	1	0.6	0.6	∞
4	Linearity	B	4.7	R	$\sqrt{3}$	1	1	2.7	2.7	∞
5	Detection limit	B	1.0	N	1	1	1	0.6	0.6	∞
6	Readout electronics	B	0.3	R	$\sqrt{3}$	1	1	0.3	0.3	∞
7	Response time	B	0.8	R	$\sqrt{3}$	1	1	0.5	0.5	∞
8	Integration time	B	2.6	R	$\sqrt{3}$	1	1	1.5	1.5	∞
9	RF ambient conditions-noise	B	0	R	$\sqrt{3}$	1	1	0	0	∞
10	RFambient conditions-reflection	B	0	R	$\sqrt{3}$	1	1	0	0	∞
11	Probe positioned mech. restrictions	B	0.4	R	$\sqrt{3}$	1	1	0.2	0.2	∞
12	Probe positioning with respect to phantom shell	B	2.9	R	$\sqrt{3}$	1	1	1.7	1.7	∞
13	Post-processing	B	1.0	R	$\sqrt{3}$	1	1	0.6	0.6	∞
Test sample related										
14	Test sample positioning	A	3.3	N	1	1	1	3.3	3.3	71
15	Device holder uncertainty	A	3.4	N	1	1	1	3.4	3.4	5
16	Drift of output power	B	5.0	R	$\sqrt{3}$	1	1	2.9	2.9	∞
Phantom and set-up										
17	Phantom uncertainty	B	4.0	R	$\sqrt{3}$	1	1	2.3	2.3	∞
18	Liquid conductivity (target)	B	5.0	R	$\sqrt{3}$	0.64	0.43	1.8	1.2	∞
19	Liquid conductivity (meas.)	A	2.06	N	1	0.64	0.43	1.32	0.89	43
20	Liquid permittivity (target)	B	5.0	R	$\sqrt{3}$	0.6	0.49	1.7	1.4	∞
21	Liquid permittivity (meas.)	A	1.6	N	1	0.6	0.49	1.0	0.8	521

Combined standard uncertainty	$u_c = \sqrt{\sum_{i=1}^{21} c_i^2 u_i^2}$							9.55	9.43	257
Expanded uncertainty (confidence interval of 95 %)	$u_e = 2u_c$							19.1	18.9	

16.2 Measurement Uncertainty for Normal SAR Tests (3~6GHz)

No.	Error Description	Type	Uncertainty value	Probably Distribution	Div.	(Ci) 1g	(Ci) 10g	Std. Unc. (1g)	Std. Unc. (10g)	Degree of freedom
Measurement system										
1	Probe calibration	B	6.55	N	1	1	1	6.55	6.55	∞
2	Isotropy	B	4.7	R	$\sqrt{3}$	0.7	0.7	1.9	1.9	∞
3	Boundary effect	B	2.0	R	$\sqrt{3}$	1	1	1.2	1.2	∞
4	Linearity	B	4.7	R	$\sqrt{3}$	1	1	2.7	2.7	∞
5	Detection limit	B	1.0	R	$\sqrt{3}$	1	1	0.6	0.6	∞
6	Readout electronics	B	0.3	R	$\sqrt{3}$	1	1	0.3	0.3	∞
7	Response time	B	0.8	R	$\sqrt{3}$	1	1	0.5	0.5	∞
8	Integration time	B	2.6	R	$\sqrt{3}$	1	1	1.5	1.5	∞
9	RF ambient conditions-noise	B	0	R	$\sqrt{3}$	1	1	0	0	∞
10	RF ambient conditions-reflection	B	0	R	$\sqrt{3}$	1	1	0	0	∞
11	Probe positioned mech. restrictions	B	0.8	R	$\sqrt{3}$	1	1	0.5	0.5	∞
12	Probe positioning with respect to phantom shell	B	6.7	R	$\sqrt{3}$	1	1	3.9	3.9	∞
13	Post-processing	B	4.0	R	$\sqrt{3}$	1	1	2.3	2.3	∞
Test sample related										
14	Test sample positioning	A	3.3	N	1	1	1	3.3	3.3	71
15	Device holder uncertainty	A	3.4	N	1	1	1	3.4	3.4	5
16	Drift of output power	B	5.0	R	$\sqrt{3}$	1	1	2.9	2.9	∞
Phantom and set-up										
17	Phantom uncertainty	B	4.0	R	$\sqrt{3}$	1	1	2.3	2.3	∞
18	Liquid conductivity (target)	B	5.0	R	$\sqrt{3}$	0.64	0.43	1.8	1.2	∞
19	Liquid conductivity (meas.)	A	2.06	N	1	0.64	0.43	1.32	0.89	43
20	Liquid permittivity	B	5.0	R	$\sqrt{3}$	0.6	0.49	1.7	1.4	∞

	(target)									
21	Liquid permittivity (meas.)	A	1.6	N	1	0.6	0.49	1.0	0.8	521
Combined standard uncertainty		$u_c = \sqrt{\sum_{i=1}^{21} c_i^2 u_i^2}$						10.7	10.6	257
Expanded uncertainty (confidence interval of 95 %)		$u_e = 2u_c$						21.4	21.1	

16.3 Measurement Uncertainty for Fast SAR Tests (300MHz~3GHz)

No.	Error Description	Type	Uncertainty value	Probably Distribution	Div.	(Ci) 1g	(Ci) 10g	Std. Unc. (1g)	Std. Unc. (10g)	Degree of freedom
Measurement system										
1	Probe calibration	B	6.0	N	1	1	1	6.0	6.0	∞
2	Isotropy	B	4.7	R	$\sqrt{3}$	0.7	0.7	1.9	1.9	∞
3	Boundary effect	B	1.0	R	$\sqrt{3}$	1	1	0.6	0.6	∞
4	Linearity	B	4.7	R	$\sqrt{3}$	1	1	2.7	2.7	∞
5	Detection limit	B	1.0	R	$\sqrt{3}$	1	1	0.6	0.6	∞
6	Readout electronics	B	0.3	R	$\sqrt{3}$	1	1	0.3	0.3	∞
7	Response time	B	0.8	R	$\sqrt{3}$	1	1	0.5	0.5	∞
8	Integration time	B	2.6	R	$\sqrt{3}$	1	1	1.5	1.5	∞
9	RF ambient conditions-noise	B	0	R	$\sqrt{3}$	1	1	0	0	∞
10	RF ambient conditions-reflection	B	0	R	$\sqrt{3}$	1	1	0	0	∞
11	Probe positioned mech. Restrictions	B	0.4	R	$\sqrt{3}$	1	1	0.2	0.2	∞
12	Probe positioning with respect to phantom shell	B	2.9	R	$\sqrt{3}$	1	1	1.7	1.7	∞
13	Post-processing	B	1.0	R	$\sqrt{3}$	1	1	0.6	0.6	∞
14	Fast SAR z-Approximation	B	7.0	R	$\sqrt{3}$	1	1	4.0	4.0	∞
Test sample related										
15	Test sample positioning	A	3.3	N	1	1	1	3.3	3.3	71
16	Device holder uncertainty	A	3.4	N	1	1	1	3.4	3.4	5
17	Drift of output power	B	5.0	R	$\sqrt{3}$	1	1	2.9	2.9	∞
Phantom and set-up										
18	Phantom uncertainty	B	4.0	R	$\sqrt{3}$	1	1	2.3	2.3	∞

19	Liquid conductivity (target)	B	5.0	R	$\sqrt{3}$	0.64	0.43	1.8	1.2	∞
20	Liquid conductivity (meas.)	A	2.06	N	1	0.64	0.43	1.32	0.89	43
21	Liquid permittivity (target)	B	5.0	R	$\sqrt{3}$	0.6	0.49	1.7	1.4	∞
22	Liquid permittivity (meas.)	A	1.6	N	1	0.6	0.49	1.0	0.8	521
Combined standard uncertainty		$u_c = \sqrt{\sum_{i=1}^{22} c_i^2 u_i^2}$						10.4	10.3	257
Expanded uncertainty (confidence interval of 95 %)		$u_e = 2u_c$						20.8	20.6	

16.4 Measurement Uncertainty for Fast SAR Tests (3~6GHz)

No.	Error Description	Type	Uncertainty value	Probably Distribution	Div.	(Ci) 1g	(Ci) 10g	Std. Unc. (1g)	Std. Unc. (10g)	Degree of freedom
Measurement system										
1	Probe calibration	B	6.55	N	1	1	1	6.55	6.55	∞
2	Isotropy	B	4.7	R	$\sqrt{3}$	0.7	0.7	1.9	1.9	∞
3	Boundary effect	B	2.0	R	$\sqrt{3}$	1	1	1.2	1.2	∞
4	Linearity	B	4.7	R	$\sqrt{3}$	1	1	2.7	2.7	∞
5	Detection limit	B	1.0	R	$\sqrt{3}$	1	1	0.6	0.6	∞
6	Readout electronics	B	0.3	R	$\sqrt{3}$	1	1	0.3	0.3	∞
7	Response time	B	0.8	R	$\sqrt{3}$	1	1	0.5	0.5	∞
8	Integration time	B	2.6	R	$\sqrt{3}$	1	1	1.5	1.5	∞
9	RF ambient conditions-noise	B	0	R	$\sqrt{3}$	1	1	0	0	∞
10	RF ambient conditions-reflection	B	0	R	$\sqrt{3}$	1	1	0	0	∞
11	Probe positioned mech. Restrictions	B	0.8	R	$\sqrt{3}$	1	1	0.5	0.5	∞
12	Probe positioning with respect to phantom shell	B	6.7	R	$\sqrt{3}$	1	1	3.9	3.9	∞
13	Post-processing	B	1.0	R	$\sqrt{3}$	1	1	0.6	0.6	∞
14	Fast SAR z-Approximation	B	14.0	R	$\sqrt{3}$	1	1	8.1	8.1	∞
Test sample related										
15	Test sample positioning	A	3.3	N	1	1	1	3.3	3.3	71

16	Device holder uncertainty	A	3.4	N	1	1	1	3.4	3.4	5
17	Drift of output power	B	5.0	R	$\sqrt{3}$	1	1	2.9	2.9	∞
Phantom and set-up										
18	Phantom uncertainty	B	4.0	R	$\sqrt{3}$	1	1	2.3	2.3	∞
19	Liquid conductivity (target)	B	5.0	R	$\sqrt{3}$	0.64	0.43	1.8	1.2	∞
20	Liquid conductivity (meas.)	A	2.06	N	1	0.64	0.43	1.32	0.89	43
21	Liquid permittivity (target)	B	5.0	R	$\sqrt{3}$	0.6	0.49	1.7	1.4	∞
22	Liquid permittivity (meas.)	A	1.6	N	1	0.6	0.49	1.0	0.8	521
Combined standard uncertainty		$u_c = \sqrt{\sum_{i=1}^{22} c_i^2 u_i^2}$						13.5	13.4	257
Expanded uncertainty (confidence interval of 95 %)		$u_e = 2u_c$						27.0	26.8	



17 MAIN TEST INSTRUMENTS

Table 17.1: List of Main Instruments

No.	Name	Type	Serial Number	Calibration Date	Valid Period
01	Network analyzer	E5071C	MY46110673	January 24, 2018	One year
02	Power meter	NRVD	102083	November 01,2017	One year
03	Power sensor	NRV-Z5	100542		
04	Signal Generator	E4438C	MY49070393	January 02,2018	One Year
05	Amplifier	60S1G4	0331848	No Calibration Requested	
06	BTS	CMW500	159889	December 20, 2017	One year
07	E-field Probe	SPEAG EX3DV4	7464	September 12,2017	One year
08	DAE	SPEAG DAE4	1525	October 02, 2017	One year
09	Dipole Validation Kit	SPEAG D750V3	1017	July 19,2017	One year
10	Dipole Validation Kit	SPEAG D835V2	4d069	July 19,2017	One year
11	Dipole Validation Kit	SPEAG D1750V2	1003	July 21,2017	One year
12	Dipole Validation Kit	SPEAG D1900V2	5d101	July 26,2017	One year
13	Dipole Validation Kit	SPEAG D2450V2	853	July 21,2017	One year
14	Dipole Validation Kit	SPEAG D2600V2	1012	July 21,2017	One year

END OF REPORT BODY

ANNEX A Graph Results

GSM850_CH251 Left Cheek

Date: 4/12/2018

Electronics: DAE4 Sn1525

Medium: head 835 MHz

Medium parameters used: $f = 848.8$ MHz; $\sigma = 0.897$ mho/m; $\epsilon_r = 41.43$; $\rho = 1000$ kg/m³

Ambient Temperature: 22.5°C, Liquid Temperature: 22.3°C

Communication System: GSM850 848.8 MHz Duty Cycle: 1:8.3

Probe: EX3DV4 – SN7464 ConvF(10.28,10.28,10.28)

Area Scan (71x121x1): Interpolated grid: dx=1.000 mm, dy=1.000 mm

Maximum value of SAR (interpolated) = 0.375 W/kg

Zoom Scan (7x7x7)/Cube 0: Measurement grid: dx=5mm, dy=5mm, dz=5mm

Reference Value = 3.032 V/m; Power Drift = 0.03 dB

Peak SAR (extrapolated) = 0.437 W/kg

SAR(1 g) = 0.34 W/kg; SAR(10 g) = 0.254 W/kg

Maximum value of SAR (measured) = 0.358 W/kg

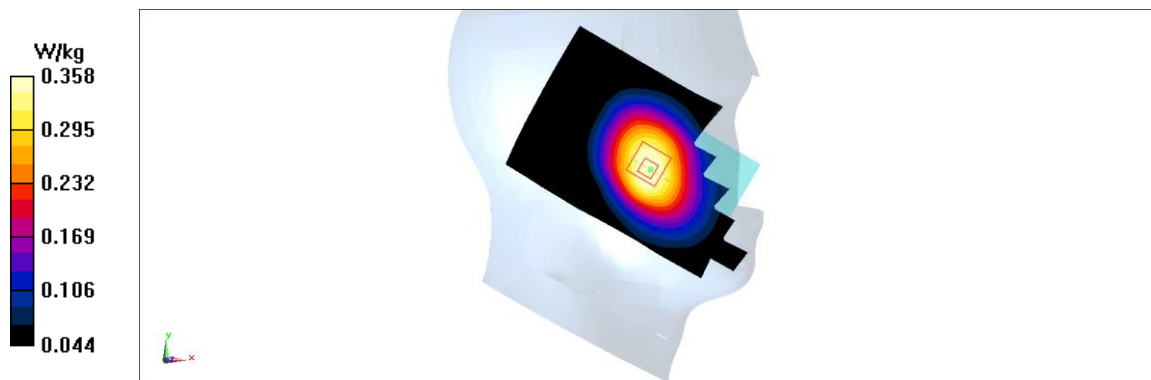


Fig A.1

GSM850_CH190 Rear

Date: 4/12/2018

Electronics: DAE4 Sn1525

Medium: body 835 MHz

Medium parameters used: $f = 836.6$ MHz; $\sigma = 0.976$ mho/m; $\epsilon_r = 54.75$; $\rho = 1000$ kg/m³

Ambient Temperature: 22.5°C, Liquid Temperature: 22.3°C

Communication System: GSM850 836.6 MHz Duty Cycle: 1:4

Probe: EX3DV4 – SN7464 ConvF(10.21,10.21,10.21)

Area Scan (71x121x1): Interpolated grid: dx=1.000 mm, dy=1.000 mm

Maximum value of SAR (interpolated) = 0.499 W/kg

Zoom Scan (7x7x7)/Cube 0: Measurement grid: dx=5mm, dy=5mm, dz=5mm

Reference Value = 22.82 V/m; Power Drift = -0.11 dB

Peak SAR (extrapolated) = 0.563 W/kg

SAR(1 g) = 0.452 W/kg; SAR(10 g) = 0.343 W/kg

Maximum value of SAR (measured) = 0.474 W/kg

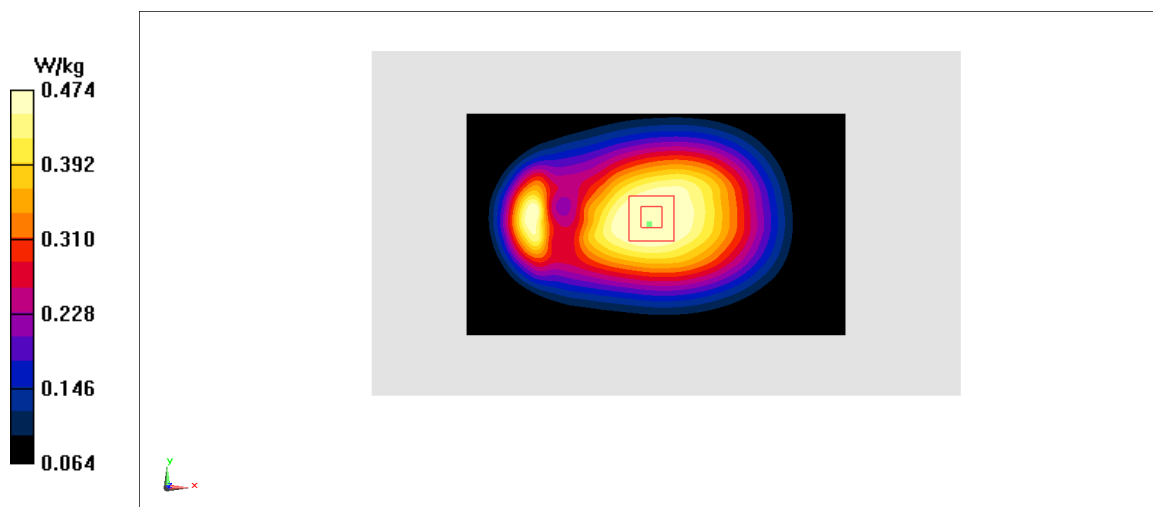


Fig A.2

PCS1900_CH512 Right Cheek

Date: 4/14/2018

Electronics: DAE4 Sn1525

Medium: head 1900 MHz

Medium parameters used: $f = 1850.2$ MHz; $\sigma = 1.334$ mho/m; $\epsilon_r = 39.39$; $\rho = 1000$ kg/m³

Ambient Temperature: 22.5°C, Liquid Temperature: 22.3°C

Communication System: PCS1900 1850.2 MHz Duty Cycle: 1:8.3

Probe: EX3DV4 – SN7464 ConvF(8.39,8.39,8.39)

Area Scan (71x121x1): Interpolated grid: dx=1.000 mm, dy=1.000 mm

Maximum value of SAR (interpolated) = 0.403 W/kg

Zoom Scan (7x7x7)/Cube 0: Measurement grid: dx=5mm, dy=5mm, dz=5mm

Reference Value = 9.418 V/m; Power Drift = 0.19 dB

Peak SAR (extrapolated) = 0.537 W/kg

SAR(1 g) = 0.344 W/kg; SAR(10 g) = 0.213 W/kg

Maximum value of SAR (measured) = 0.373 W/kg

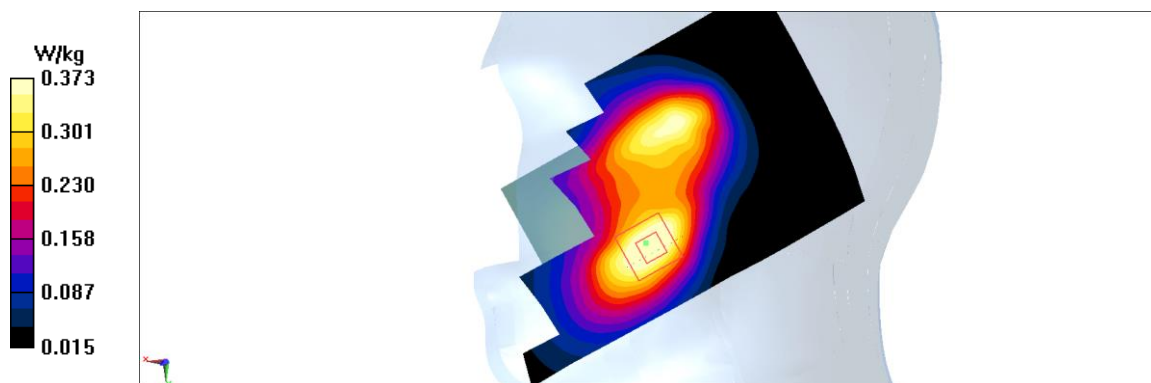


Fig A.3

PCS1900_CH512 Rear

Date: 4/14/2018

Electronics: DAE4 Sn1525

Medium: body 1900 MHz

Medium parameters used: $f = 1850.2$ MHz; $\sigma = 1.477$ mho/m; $\epsilon_r = 53.27$; $\rho = 1000$ kg/m³

Ambient Temperature: 22.5°C, Liquid Temperature: 22.3°C

Communication System: PCS1900 1850.2 MHz Duty Cycle: 1:4

Probe: EX3DV4 – SN7464 ConvF(8.32,8.32,8.32)

Area Scan (71x121x1): Interpolated grid: dx=1.000 mm, dy=1.000 mm

Maximum value of SAR (interpolated) = 1.25 W/kg

Zoom Scan (7x7x7)/Cube 0: Measurement grid: dx=5mm, dy=5mm, dz=5mm

Reference Value = 8.069 V/m; Power Drift = 0.05 dB

Peak SAR (extrapolated) = 1.71 W/kg

SAR(1 g) = 0.987 W/kg; SAR(10 g) = 0.539 W/kg

Maximum value of SAR (measured) = 1.11 W/kg

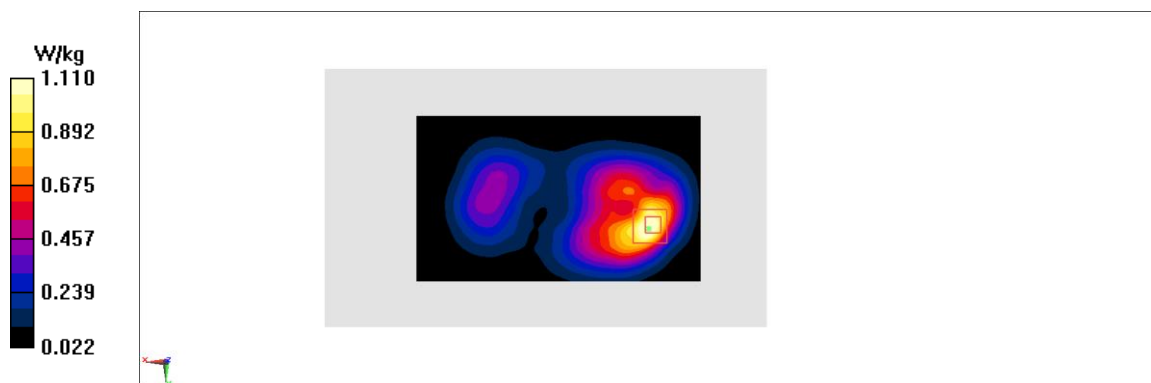


Fig A.4

WCDMA1900-BII_CH9262 Left Cheek

Date: 4/14/2018

Electronics: DAE4 Sn1525

Medium: head 1900 MHz

Medium parameters used: $f = 1852.4$ MHz; $\sigma = 1.336$ mho/m; $\epsilon_r = 39.39$; $\rho = 1000$ kg/m³

Ambient Temperature: 22.5°C, Liquid Temperature: 22.3°C

Communication System: WCDMA1900-BII 1852.4 MHz Duty Cycle: 1:1

Probe: EX3DV4 – SN7464 ConvF(8.39,8.39,8.39)

Area Scan (71x121x1): Interpolated grid: dx=1.000 mm, dy=1.000 mm

Maximum value of SAR (interpolated) = 0.276 W/kg

Zoom Scan (7x7x7)/Cube 0: Measurement grid: dx=5mm, dy=5mm, dz=5mm

Reference Value = 4.548 V/m; Power Drift = 0.07 dB

Peak SAR (extrapolated) = 0.348 W/kg

SAR(1 g) = 0.225 W/kg; SAR(10 g) = 0.144 W/kg

Maximum value of SAR (measured) = 0.243 W/kg

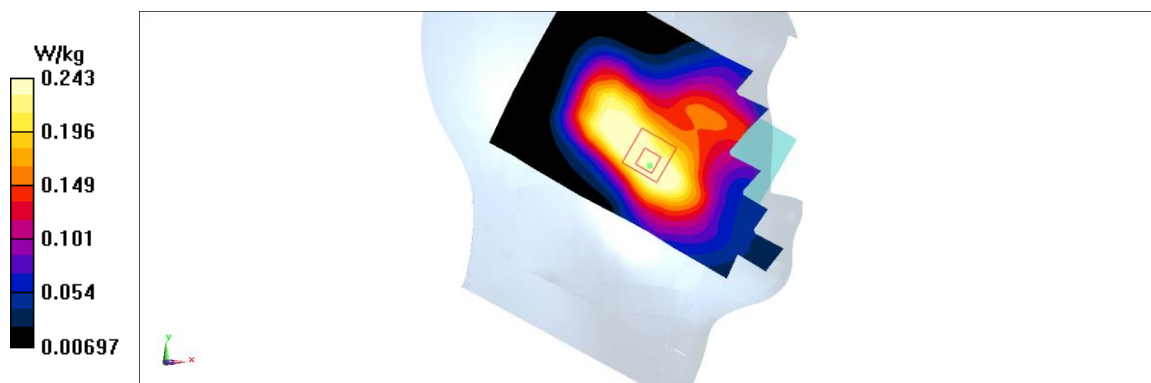


Fig A.5

WCDMA1900-BII_CH9262 Bottom edge

Date: 4/14/2018

Electronics: DAE4 Sn1525

Medium: body 1900 MHz

Medium parameters used: $f = 1852.4$ MHz; $\sigma = 1.479$ mho/m; $\epsilon_r = 53.27$; $\rho = 1000$ kg/m³

Ambient Temperature: 22.5°C, Liquid Temperature: 22.3°C

Communication System: WCDMA1900-BII 1852.4 MHz Duty Cycle: 1:1

Probe: EX3DV4 – SN7464 ConvF(8.32,8.32,8.32)

Area Scan (71x121x1): Interpolated grid: dx=1.000 mm, dy=1.000 mm

Maximum value of SAR (interpolated) = 1.48 W/kg

Zoom Scan (7x7x7)/Cube 0: Measurement grid: dx=5mm, dy=5mm, dz=5mm

Reference Value = 26.96 V/m; Power Drift = 0.07 dB

Peak SAR (extrapolated) = 2.01 W/kg

SAR(1 g) = 1.18 W/kg; SAR(10 g) = 0.623 W/kg

Maximum value of SAR (measured) = 1.34 W/kg

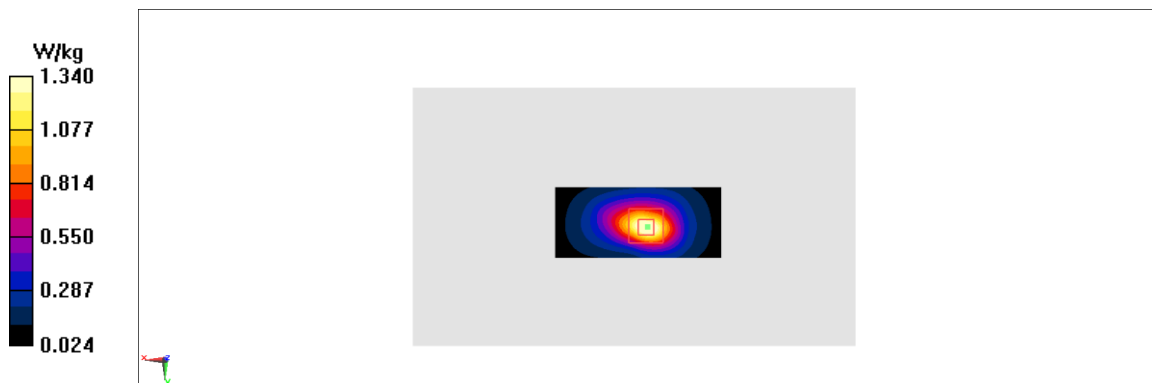


Fig A.6

WCDMA1700-BIV_CH1412 Left Cheek

Date: 4/13/2018

Electronics: DAE4 Sn1525

Medium: head 1750 MHz

Medium parameters used: $f = 1732.4$ MHz; $\sigma = 1.357$ mho/m; $\epsilon_r = 39.46$; $\rho = 1000$ kg/m³

Ambient Temperature: 22.5°C, Liquid Temperature: 22.3°C

Communication System: WCDMA1700-BIV 1732.4 MHz Duty Cycle: 1:1

Probe: EX3DV4 – SN7464 ConvF(8.70,8.70,8.70)

Area Scan (71x121x1): Interpolated grid: dx=1.000 mm, dy=1.000 mm

Maximum value of SAR (interpolated) = 0.501 W/kg

Zoom Scan (7x7x7)/Cube 0: Measurement grid: dx=5mm, dy=5mm, dz=5mm

Reference Value = 3.728 V/m; Power Drift = 0.05 dB

Peak SAR (extrapolated) = 0.649 W/kg

SAR(1 g) = 0.424 W/kg; SAR(10 g) = 0.264 W/kg

Maximum value of SAR (measured) = 0.465 W/kg

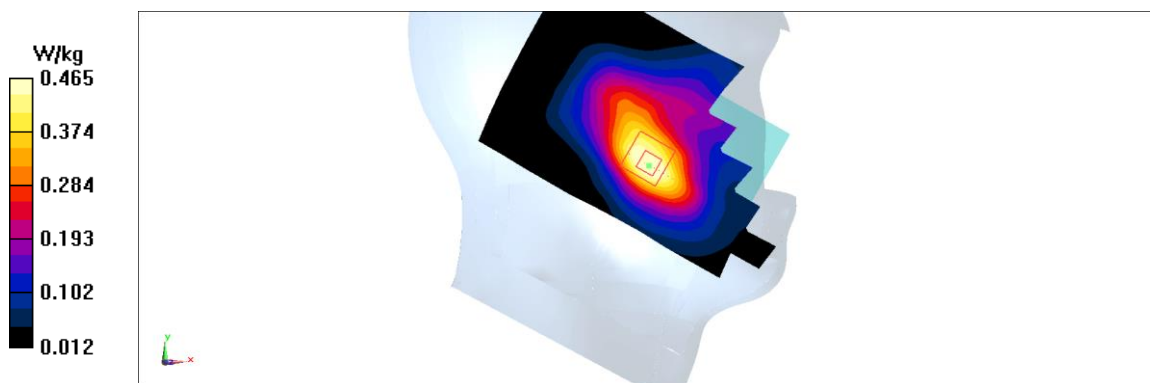


Fig A.7

WCDMA1700-BIV_CH1412 Rear

Date: 4/13/2018

Electronics: DAE4 Sn1525

Medium: body 1750 MHz

Medium parameters used: $f = 1732.4$ MHz; $\sigma = 1.449$ mho/m; $\epsilon_r = 54.06$; $\rho = 1000$ kg/m³

Ambient Temperature: 22.5°C, Liquid Temperature: 22.3°C

Communication System: WCDMA1700-BIV 1732.4 MHz Duty Cycle: 1:1

Probe: EX3DV4 – SN7464 ConvF(8.60,8.60,8.60)

Area Scan (71x121x1): Interpolated grid: dx=1.000 mm, dy=1.000 mm

Maximum value of SAR (interpolated) = 1.39 W/kg

Zoom Scan (7x7x7)/Cube 0: Measurement grid: dx=5mm, dy=5mm, dz=5mm

Reference Value = 13.95 V/m; Power Drift = -0.03 dB

Peak SAR (extrapolated) = 1.84 W/kg

SAR(1 g) = 1.08 W/kg; SAR(10 g) = 0.614 W/kg

Maximum value of SAR (measured) = 1.2 W/kg

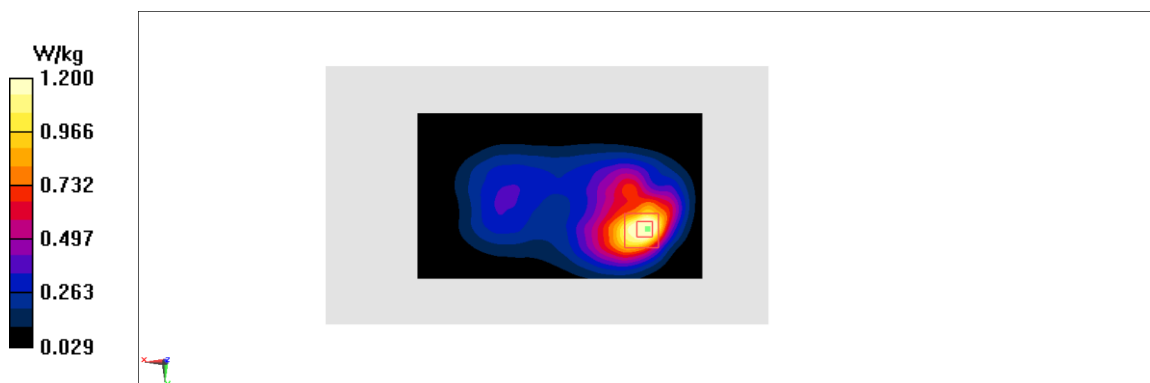


Fig A.8

WCDMA850-BV_CH4182 Left Cheek

Date: 4/12/2018

Electronics: DAE4 Sn1525

Medium: head 835 MHz

Medium parameters used: $f = 835.4$ MHz; $\sigma = 0.884$ mho/m; $\epsilon_r = 41.45$; $\rho = 1000$ kg/m³

Ambient Temperature: 22.5°C, Liquid Temperature: 22.3°C

Communication System: WCDMA850-BV 835.4 MHz Duty Cycle: 1:1

Probe: EX3DV4 – SN7464 ConvF(10.28,10.28,10.28)

Area Scan (71x121x1): Interpolated grid: $dx=1.000$ mm, $dy=1.000$ mm

Maximum value of SAR (interpolated) = 0.373 W/kg

Zoom Scan (7x7x7)/Cube 0: Measurement grid: $dx=5$ mm, $dy=5$ mm, $dz=5$ mm

Reference Value = 3.944 V/m; Power Drift = -0.08 dB

Peak SAR (extrapolated) = 0.43 W/kg

SAR(1 g) = 0.344 W/kg; SAR(10 g) = 0.259 W/kg

Maximum value of SAR (measured) = 0.363 W/kg

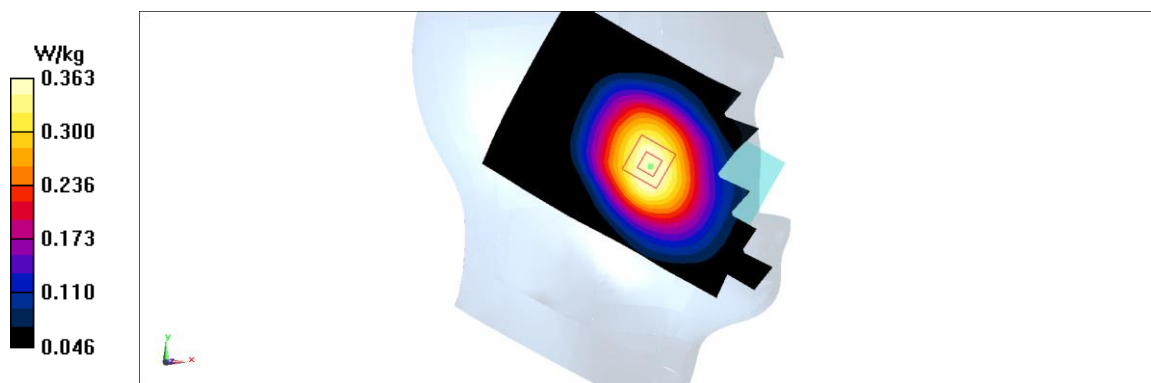


Fig A.9

WCDMA850-BV_CH4233 Rear

Date: 4/12/2018

Electronics: DAE4 Sn1525

Medium: body 835 MHz

Medium parameters used: $f = 846.6$ MHz; $\sigma = 0.985$ mho/m; $\epsilon_r = 54.74$; $\rho = 1000$ kg/m³

Ambient Temperature: 22.5°C, Liquid Temperature: 22.3°C

Communication System: WCDMA850-BV 846.6 MHz Duty Cycle: 1:1

Probe: EX3DV4 – SN7464 ConvF(10.21,10.21,10.21)

Area Scan (71x121x1): Interpolated grid: dx=1.000 mm, dy=1.000 mm

Maximum value of SAR (interpolated) = 0.414 W/kg

Zoom Scan (7x7x7)/Cube 0: Measurement grid: dx=5mm, dy=5mm, dz=5mm

Reference Value = 20.62 V/m; Power Drift = 0.06 dB

Peak SAR (extrapolated) = 0.467 W/kg

SAR(1 g) = 0.377 W/kg; SAR(10 g) = 0.288 W/kg

Maximum value of SAR (measured) = 0.396 W/kg

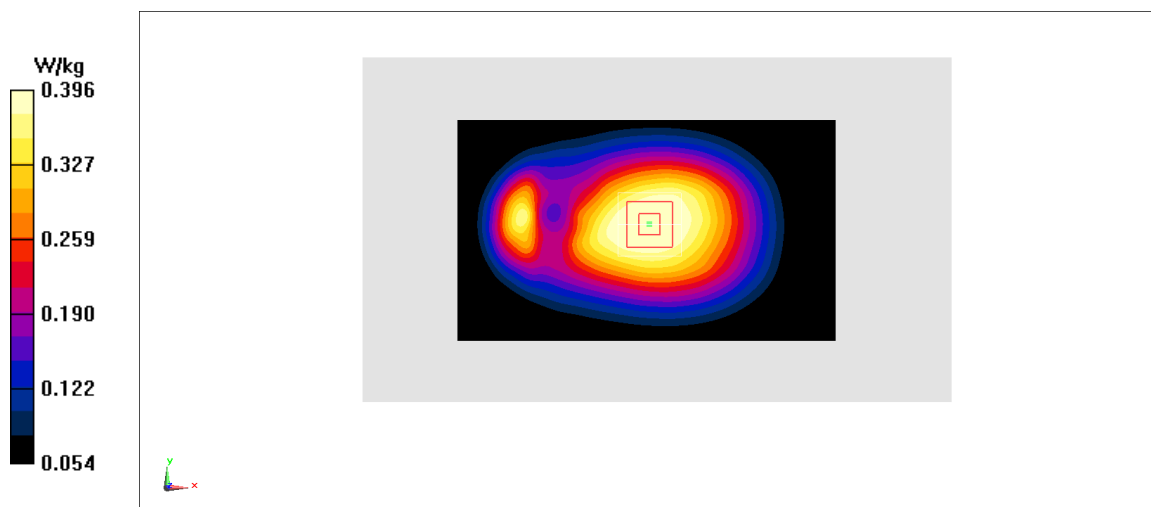


Fig A.10

LTE1900-FDD2_CH19100 Left Cheek

Date: 4/14/2018

Electronics: DAE4 Sn1525

Medium: head 1900 MHz

Medium parameters used: $f = 1900$ MHz; $\sigma = 1.382$ mho/m; $\epsilon_r = 39.33$; $\rho = 1000$ kg/m³

Ambient Temperature: 22.5°C, Liquid Temperature: 22.3°C

Communication System: LTE1900-FDD2 1900 MHz Duty Cycle: 1:1

Probe: EX3DV4 – SN7464 ConvF(8.39,8.39,8.39)

Area Scan (71x121x1): Interpolated grid: dx=1.000 mm, dy=1.000 mm

Maximum value of SAR (interpolated) = 0.164 W/kg

Zoom Scan (7x7x7)/Cube 0: Measurement grid: dx=5mm, dy=5mm, dz=5mm

Reference Value = 4.572 V/m; Power Drift = 0.06 dB

Peak SAR (extrapolated) = 0.215 W/kg

SAR(1 g) = 0.137 W/kg; SAR(10 g) = 0.086 W/kg

Maximum value of SAR (measured) = 0.148 W/kg

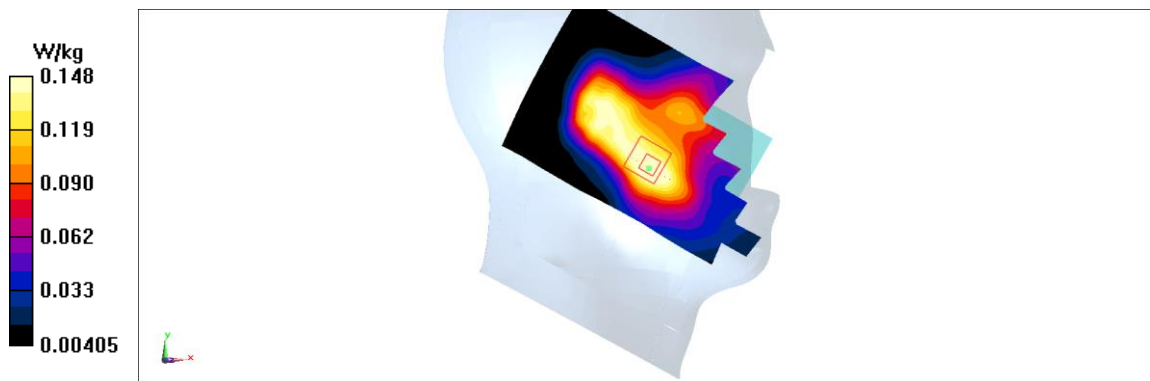


Fig A.11

LTE1900-FDD2_CH18700 Bottom edge

Date: 4/14/2018

Electronics: DAE4 Sn1525

Medium: body 1900 MHz

Medium parameters used: $f = 1860$ MHz; $\sigma = 1.487$ mho/m; $\epsilon_r = 53.26$; $\rho = 1000$ kg/m³

Ambient Temperature: 22.5°C, Liquid Temperature: 22.3°C

Communication System: LTE1900-FDD2 1860 MHz Duty Cycle: 1:1

Probe: EX3DV4 – SN7464 ConvF(8.32,8.32,8.32)

Area Scan (71x121x1): Interpolated grid: dx=1.000 mm, dy=1.000 mm

Maximum value of SAR (interpolated) = 1.31 W/kg

Zoom Scan (7x7x7)/Cube 0: Measurement grid: dx=5mm, dy=5mm, dz=5mm

Reference Value = 25.08 V/m; Power Drift = 0.12 dB

Peak SAR (extrapolated) = 1.77 W/kg

SAR(1 g) = 1.04 W/kg; SAR(10 g) = 0.548 W/kg

Maximum value of SAR (measured) = 1.19 W/kg

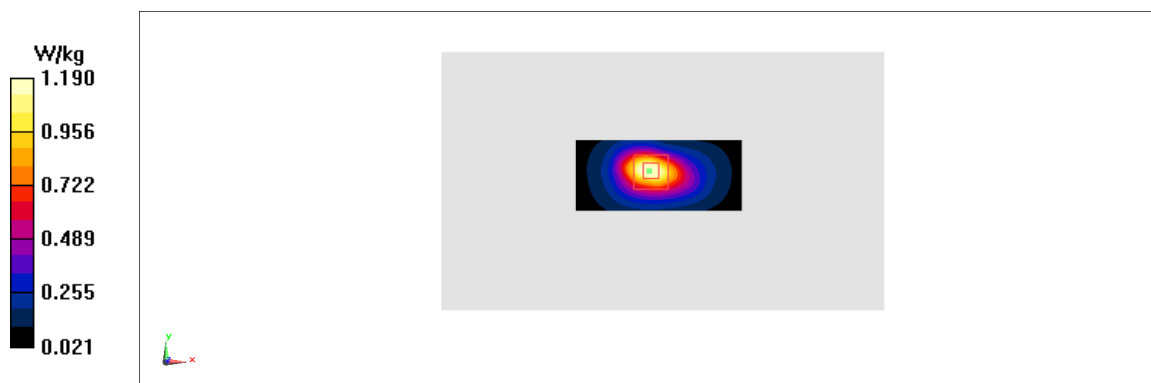


Fig A.12

LTE1700-FDD4_CH20050 Left Cheek

Date: 4/13/2018

Electronics: DAE4 Sn1525

Medium: head 1750 MHz

Medium parameters used: $f = 1720$ MHz; $\sigma = 1.346$ mho/m; $\epsilon_r = 39.48$; $\rho = 1000$ kg/m³

Ambient Temperature: 22.5°C, Liquid Temperature: 22.3°C

Communication System: LTE1700-FDD4 1720 MHz Duty Cycle: 1:1

Probe: EX3DV4 – SN7464 ConvF(8.70,8.70,8.70)

Area Scan (71x121x1): Interpolated grid: dx=1.000 mm, dy=1.000 mm

Maximum value of SAR (interpolated) = 0.332 W/kg

Zoom Scan (7x7x7)/Cube 0: Measurement grid: dx=5mm, dy=5mm, dz=5mm

Reference Value = 3.144 V/m; Power Drift = 0.05 dB

Peak SAR (extrapolated) = 0.416 W/kg

SAR(1 g) = 0.292 W/kg; SAR(10 g) = 0.194 W/kg

Maximum value of SAR (measured) = 0.314 W/kg

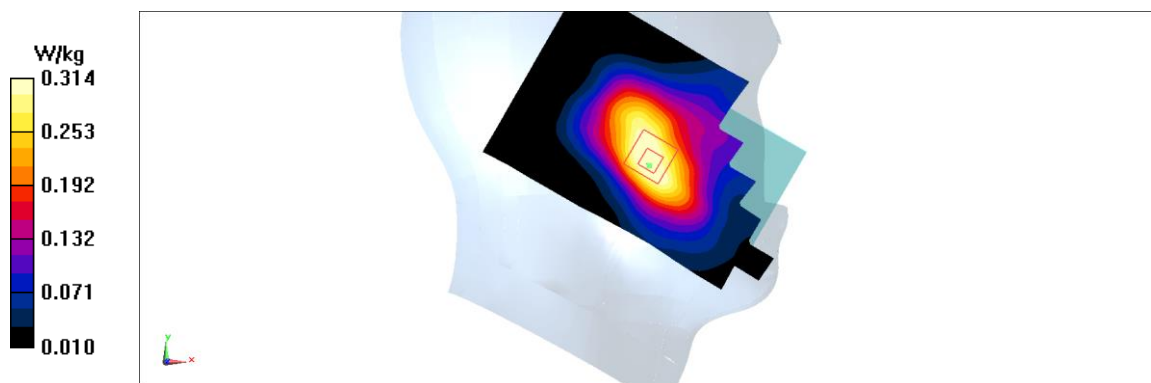


Fig A.13

LTE1700-FDD4_CH20300 Rear

Date: 4/13/2018

Electronics: DAE4 Sn1525

Medium: body 1750 MHz

Medium parameters used: $f = 1745$ MHz; $\sigma = 1.461$ mho/m; $\epsilon_r = 54.05$; $\rho = 1000$ kg/m³

Ambient Temperature: 22.5°C, Liquid Temperature: 22.3°C

Communication System: LTE1700-FDD4 1745 MHz Duty Cycle: 1:1

Probe: EX3DV4 – SN7464 ConvF(8.60,8.60,8.60)

Area Scan (71x121x1): Interpolated grid: dx=1.000 mm, dy=1.000 mm

Maximum value of SAR (interpolated) = 1.29 W/kg

Zoom Scan (7x7x7)/Cube 0: Measurement grid: dx=5mm, dy=5mm, dz=5mm

Reference Value = 13 V/m; Power Drift = -0.02 dB

Peak SAR (extrapolated) = 1.69 W/kg

SAR(1 g) = 0.993 W/kg; SAR(10 g) = 0.569 W/kg

Maximum value of SAR (measured) = 1.1 W/kg

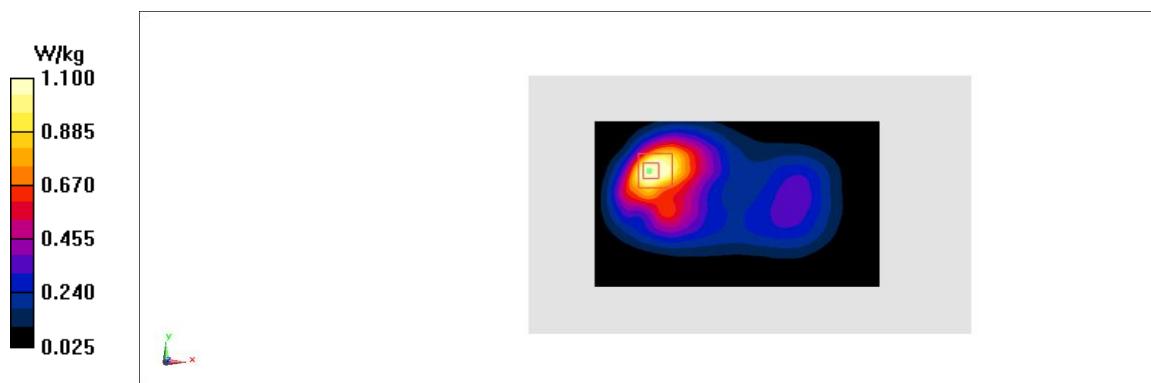


Fig A.14

LTE850-FDD5_CH20450 Left Cheek

Date: 4/12/2018

Electronics: DAE4 Sn1525

Medium: head 835 MHz

Medium parameters used: $f = 829$ MHz; $\sigma = 0.878$ mho/m; $\epsilon_r = 41.46$; $\rho = 1000$ kg/m³

Ambient Temperature: 22.5°C, Liquid Temperature: 22.3°C

Communication System: LTE850-FDD5 829 MHz Duty Cycle: 1:1

Probe: EX3DV4 – SN7464 ConvF(10.28,10.28,10.28)

Area Scan (71x121x1): Interpolated grid: dx=1.000 mm, dy=1.000 mm

Maximum value of SAR (interpolated) = 0.348 W/kg

Zoom Scan (7x7x7)/Cube 0: Measurement grid: dx=5mm, dy=5mm, dz=5mm

Reference Value = 4.359 V/m; Power Drift = 0.17 dB

Peak SAR (extrapolated) = 0.397 W/kg

SAR(1 g) = 0.315 W/kg; SAR(10 g) = 0.236 W/kg

Maximum value of SAR (measured) = 0.33 W/kg

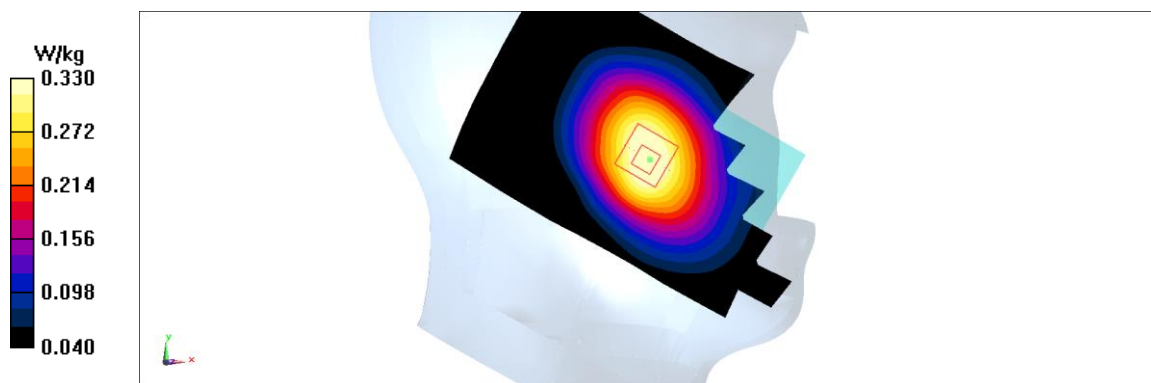


Fig A.15

LTE850-FDD5_CH20450 Rear

Date: 4/12/2018

Electronics: DAE4 Sn1525

Medium: body 835 MHz

Medium parameters used: $f = 829$ MHz; $\sigma = 0.968$ mho/m; $\epsilon_r = 54.76$; $\rho = 1000$ kg/m³

Ambient Temperature: 22.5°C, Liquid Temperature: 22.3°C

Communication System: LTE850-FDD5 829 MHz Duty Cycle: 1:1

Probe: EX3DV4 – SN7464 ConvF(10.21,10.21,10.21)

Area Scan (71x121x1): Interpolated grid: dx=1.000 mm, dy=1.000 mm

Maximum value of SAR (interpolated) = 0.393 W/kg

Zoom Scan (7x7x7)/Cube 0: Measurement grid: dx=5mm, dy=5mm, dz=5mm

Reference Value = 20.22 V/m; Power Drift = 0.02 dB

Peak SAR (extrapolated) = 0.444 W/kg

SAR(1 g) = 0.359 W/kg; SAR(10 g) = 0.274 W/kg

Maximum value of SAR (measured) = 0.378 W/kg

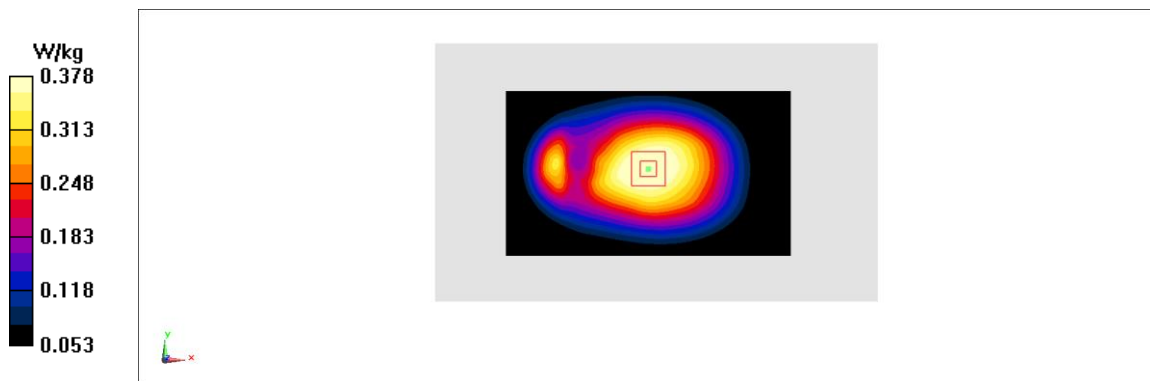


Fig A.16

LTE2500-FDD7_CH20850 Right Cheek

Date: 4/16/2018

Electronics: DAE4 Sn1525

Medium: head 2600 MHz

Medium parameters used: $f = 2510$ MHz; $\sigma = 1.87$ mho/m; $\epsilon_r = 38.57$; $\rho = 1000$ kg/m³

Ambient Temperature: 22.5°C, Liquid Temperature: 22.3°C

Communication System: LTE2500-FDD7 2510 MHz Duty Cycle: 1:1

Probe: EX3DV4 – SN7464 ConvF(7.76,7.76,7.76)

Area Scan (71x121x1): Interpolated grid: dx=1.000 mm, dy=1.000 mm

Maximum value of SAR (interpolated) = 0.241 W/kg

Zoom Scan (7x7x7)/Cube 0: Measurement grid: dx=5mm, dy=5mm, dz=5mm

Reference Value = 7.374 V/m; Power Drift = 0.2 dB

Peak SAR (extrapolated) = 0.373 W/kg

SAR(1 g) = 0.187 W/kg; SAR(10 g) = 0.094 W/kg

Maximum value of SAR (measured) = 0.21 W/kg

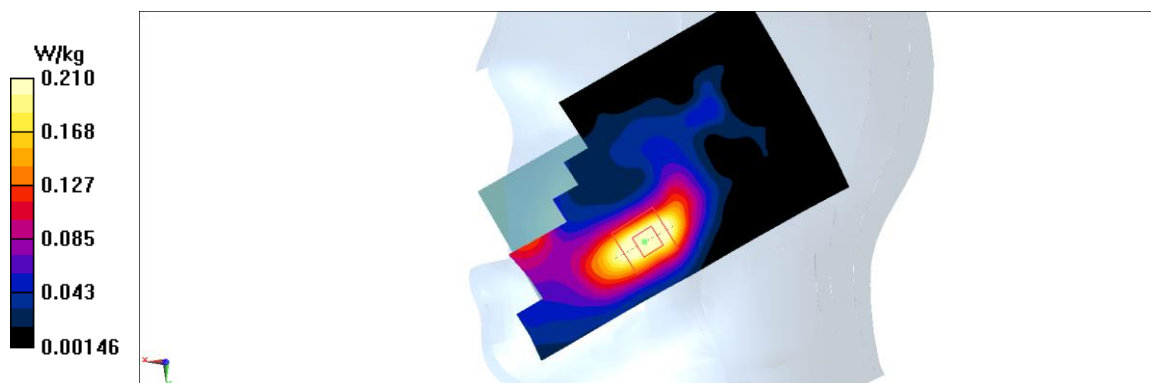


Fig A.17

LTE2500-FDD7_CH21350 Bottom edge

Date: 4/16/2018

Electronics: DAE4 Sn1525

Medium: body 2600 MHz

Medium parameters used: $f = 2560$ MHz; $\sigma = 2.11$ mho/m; $\epsilon_r = 52.98$; $\rho = 1000$ kg/m³

Ambient Temperature: 22.5°C, Liquid Temperature: 22.3°C

Communication System: LTE2500-FDD7 2560 MHz Duty Cycle: 1:1

Probe: EX3DV4 – SN7464 ConvF(7.84,7.84,7.84)

Area Scan (71x121x1): Interpolated grid: dx=1.000 mm, dy=1.000 mm

Maximum value of SAR (interpolated) = 1.48 W/kg

Zoom Scan (7x7x7)/Cube 0: Measurement grid: dx=5mm, dy=5mm, dz=5mm

Reference Value = 19.86 V/m; Power Drift = -0.05 dB

Peak SAR (extrapolated) = 2.17 W/kg

SAR(1 g) = 1.11 W/kg; SAR(10 g) = 0.52 W/kg

Maximum value of SAR (measured) = 1.42 W/kg

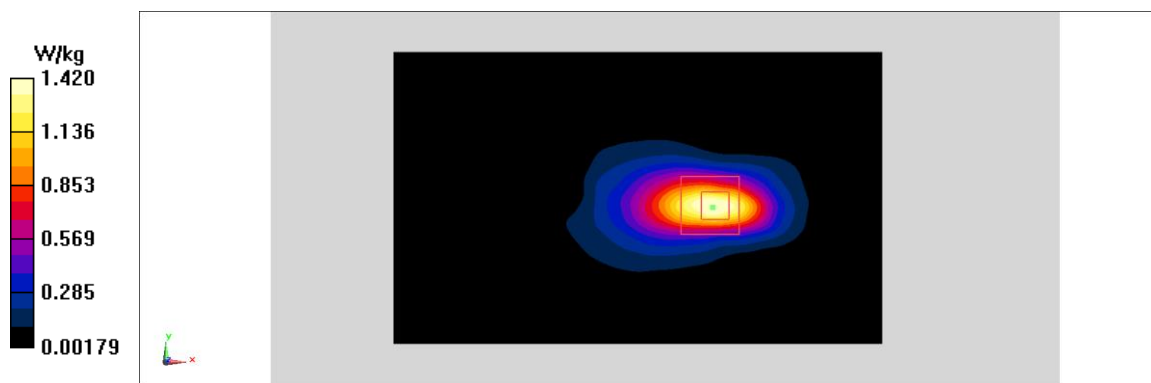


Fig A.18

LTE700-FDD12_CH23060 Right Cheek

Date: 4/11/2018

Electronics: DAE4 Sn1525

Medium: head 750 MHz

Medium parameters used: $f = 704$ MHz; $\sigma = 0.853$ mho/m; $\epsilon_r = 42.13$; $\rho = 1000$ kg/m³

Ambient Temperature: 22.5°C, Liquid Temperature: 22.3°C

Communication System: LTE700-FDD12 704 MHz Duty Cycle: 1:1

Probe: EX3DV4 – SN7464 ConvF(10.57,10.57,10.57)

Area Scan (71x121x1): Interpolated grid: dx=1.000 mm, dy=1.000 mm

Maximum value of SAR (interpolated) = 0.201 W/kg

Zoom Scan (7x7x7)/Cube 0: Measurement grid: dx=5mm, dy=5mm, dz=5mm

Reference Value = 4.531 V/m; Power Drift = -0.05 dB

Peak SAR (extrapolated) = 0.224 W/kg

SAR(1 g) = 0.186 W/kg; SAR(10 g) = 0.145 W/kg

Maximum value of SAR (measured) = 0.196 W/kg

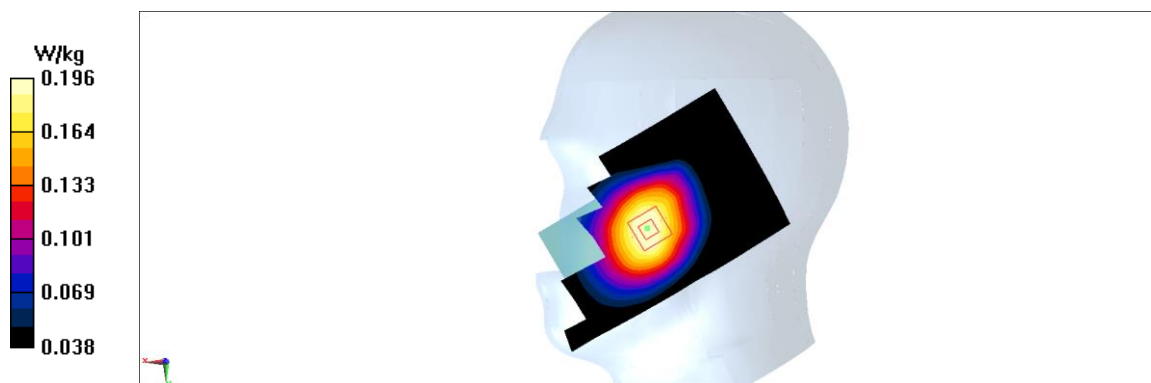


Fig A.19

LTE700-FDD12_CH23060 Rear

Date: 4/11/2018

Electronics: DAE4 Sn1525

Medium: body 750 MHz

Medium parameters used: $f = 704$ MHz; $\sigma = 0.917$ mho/m; $\epsilon_r = 55.09$; $\rho = 1000$ kg/m³

Ambient Temperature: 22.5°C, Liquid Temperature: 22.3°C

Communication System: LTE700-FDD12 704 MHz Duty Cycle: 1:1

Probe: EX3DV4 – SN7464 ConvF(10.63,10.63,10.63)

Area Scan (71x121x1): Interpolated grid: dx=1.000 mm, dy=1.000 mm

Maximum value of SAR (interpolated) = 0.284 W/kg

Zoom Scan (7x7x7)/Cube 0: Measurement grid: dx=5mm, dy=5mm, dz=5mm

Reference Value = 16.8 V/m; Power Drift = -0.13 dB

Peak SAR (extrapolated) = 0.322 W/kg

SAR(1 g) = 0.257 W/kg; SAR(10 g) = 0.196 W/kg

Maximum value of SAR (measured) = 0.27 W/kg

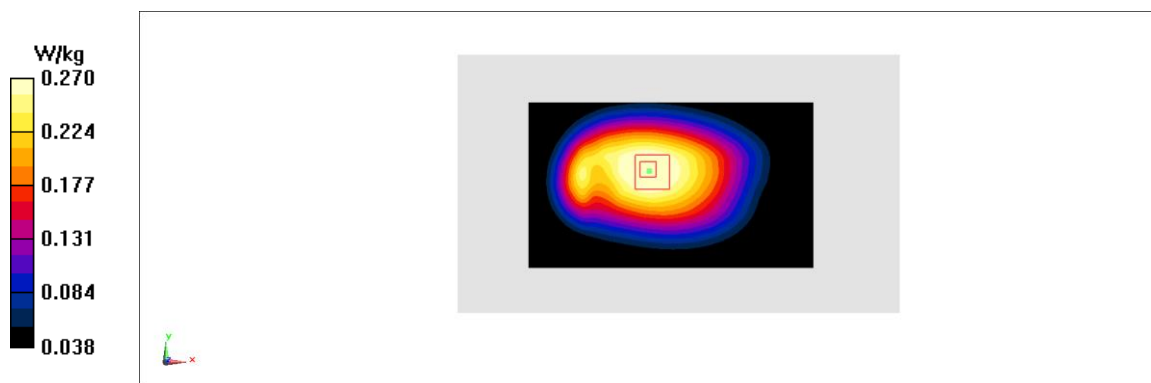


Fig A.20

LTE750-FDD13_CH23230 Left Cheek

Date: 4/11/2018

Electronics: DAE4 Sn1525

Medium: head 750 MHz

Medium parameters used: $f = 782$ MHz; $\sigma = 0.927$ mho/m; $\epsilon_r = 42.03$; $\rho = 1000$ kg/m³

Ambient Temperature: 22.5°C, Liquid Temperature: 22.3°C

Communication System: LTE750-FDD13 782 MHz Duty Cycle: 1:1

Probe: EX3DV4 – SN7464 ConvF(10.57,10.57,10.57)

Area Scan (71x121x1): Interpolated grid: dx=1.000 mm, dy=1.000 mm

Maximum value of SAR (interpolated) = 0.322 W/kg

Zoom Scan (7x7x7)/Cube 0: Measurement grid: dx=5mm, dy=5mm, dz=5mm

Reference Value = 3.893 V/m; Power Drift = 0.19 dB

Peak SAR (extrapolated) = 0.371 W/kg

SAR(1 g) = 0.294 W/kg; SAR(10 g) = 0.223 W/kg

Maximum value of SAR (measured) = 0.308 W/kg

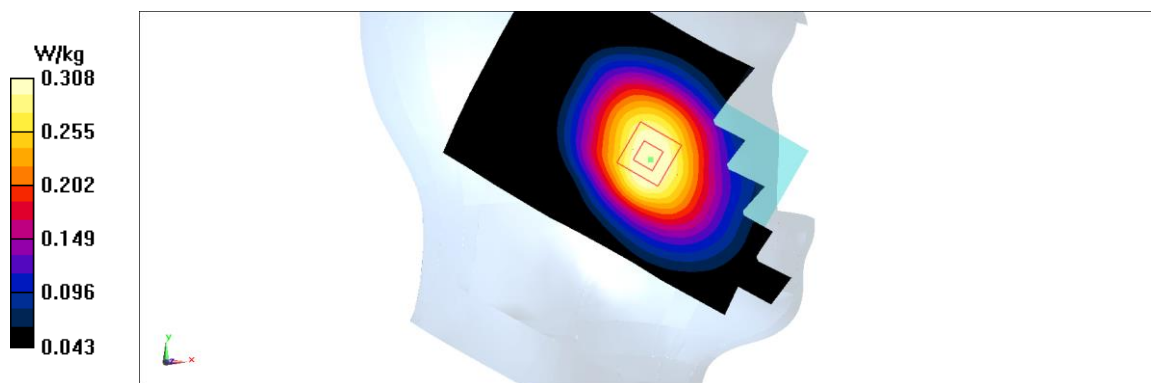


Fig A.21