



Appendix D

Photographs

1. SAR measurement System
2. Photographs of Tissue Simulate Liquid
3. Photographs of EUT test position
4. EUT Constructional Details

1. SAR measurement System



2. Photographs of Tissue Simulate Liquid

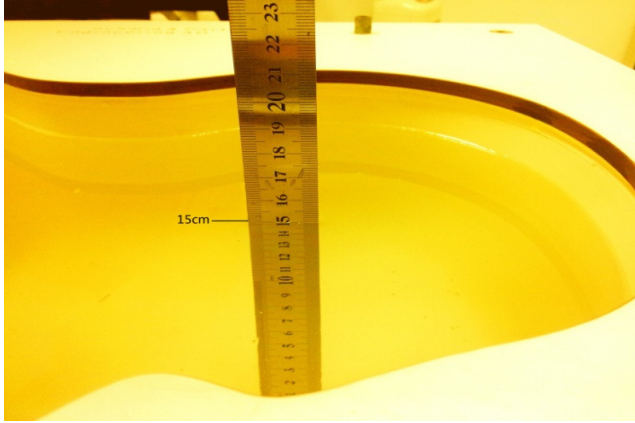
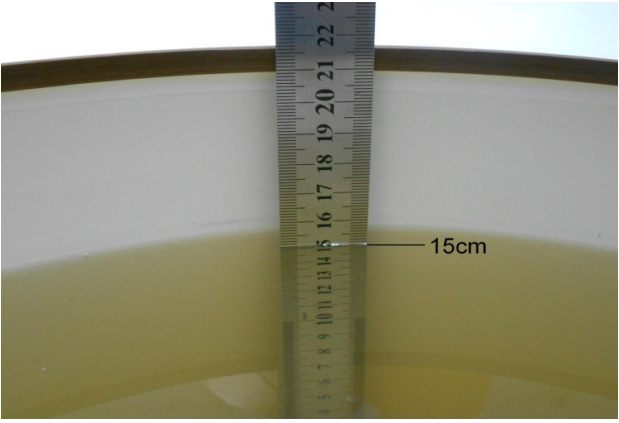
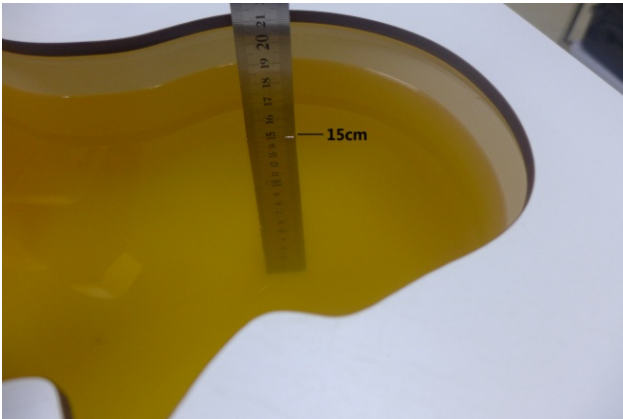
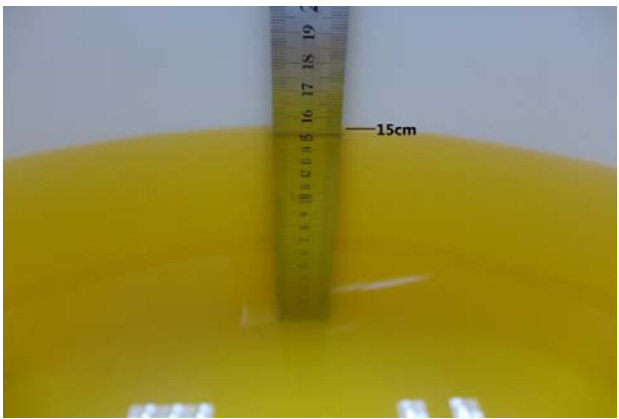
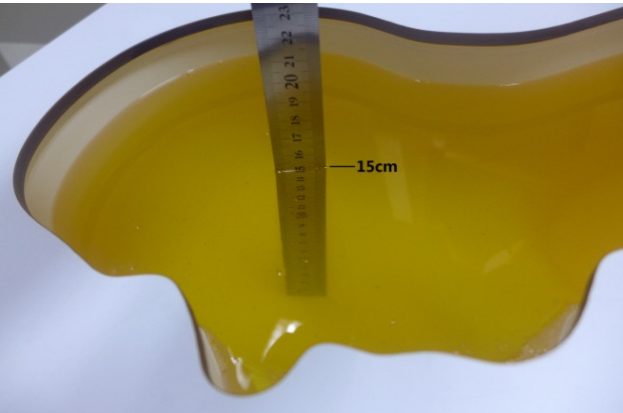
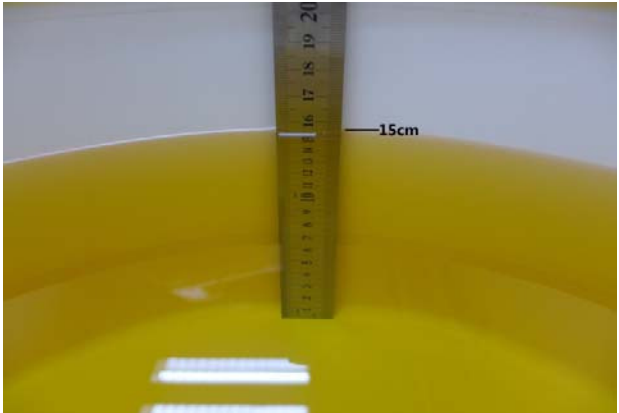
<p>Photo 1: Tissue Simulant Liquid for Head 835</p>	<p>Photo 2: Tissue Simulant Liquid for Body 835</p>
	
<p>Photo 3: Tissue Simulant Liquid for Head 1900</p>	<p>Photo 4: Tissue Simulant Liquid for Body 1900</p>
	
<p>Photo 5: Tissue Simulant Liquid for Head 2450</p>	<p>Photo 6: Tissue Simulant Liquid for Body 2450</p>
	

Photo 7: Tissue Simulant Liquid for Head 2600

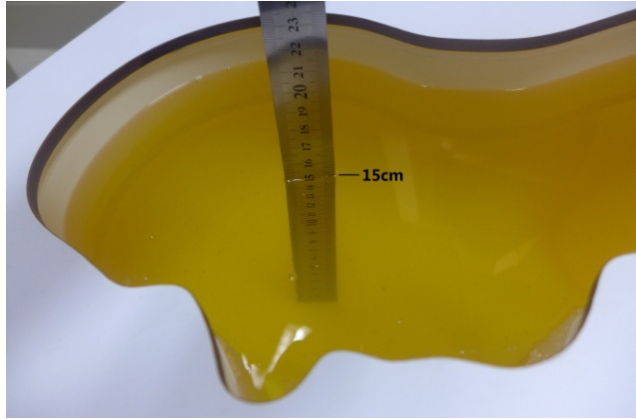
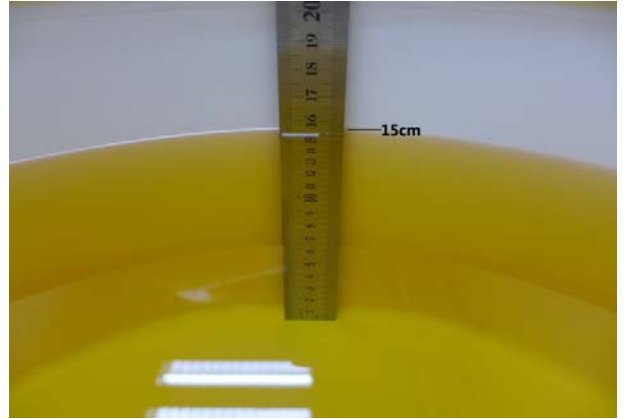


Photo 8: Tissue Simulant Liquid for Body 2600



3. Photographs of EUT test position

Photo 9: Left touch cheek

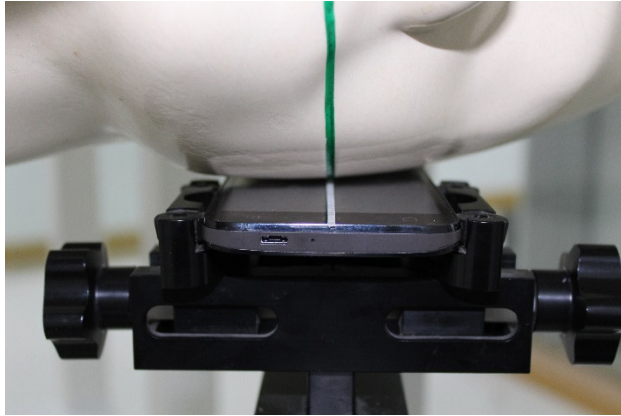


Photo 10: Left tilted 15 degree

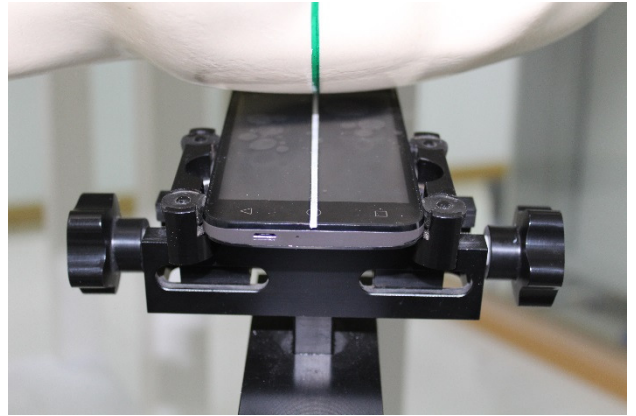


Photo 11: Right touch cheek

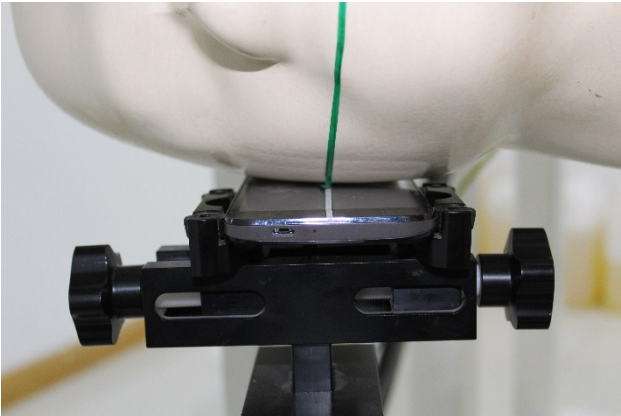


Photo 12: Right tilted 15 degree

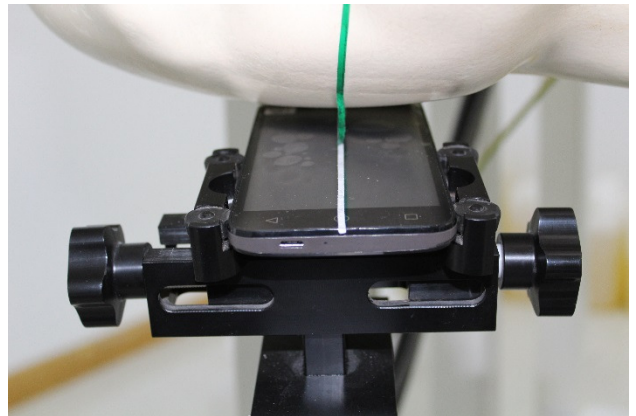


Photo 13: Front side 15mm

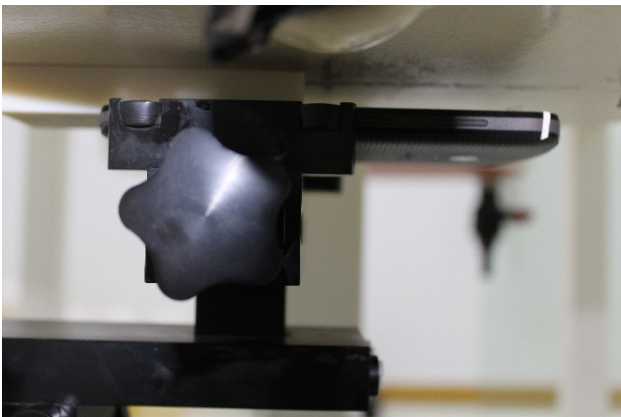


Photo 14: Back side 15mm

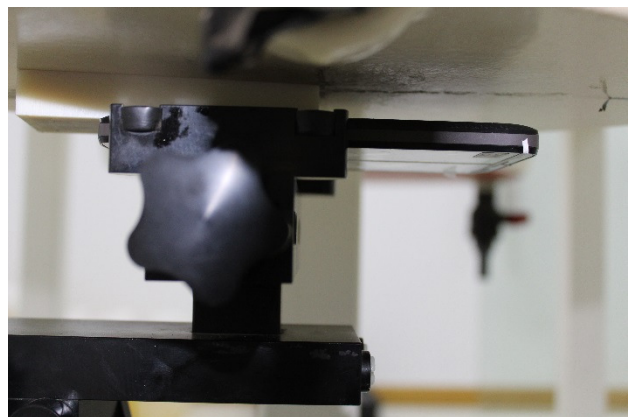


Photo 15: Front side 10mm

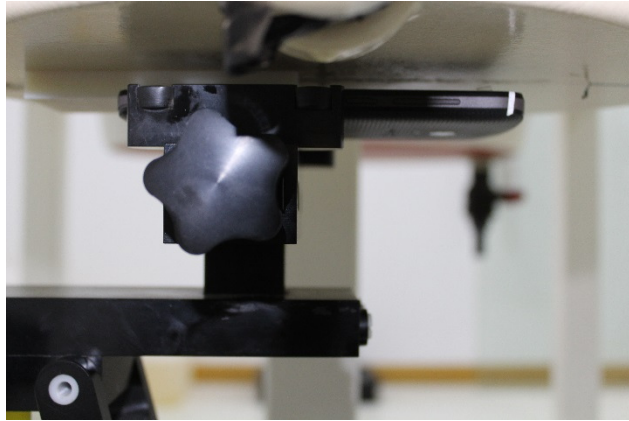


Photo 16: Back side 10mm

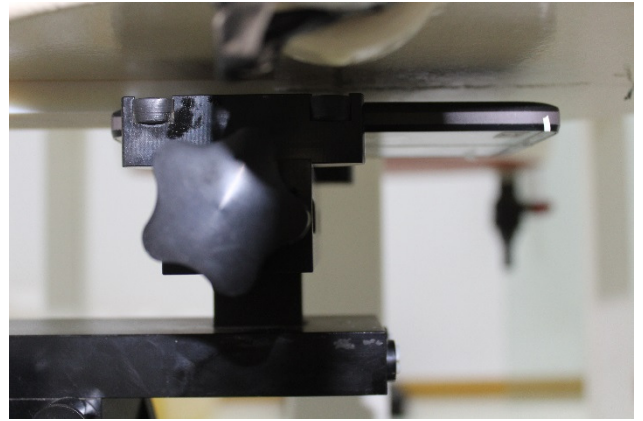


Photo 17: Left side 10mm

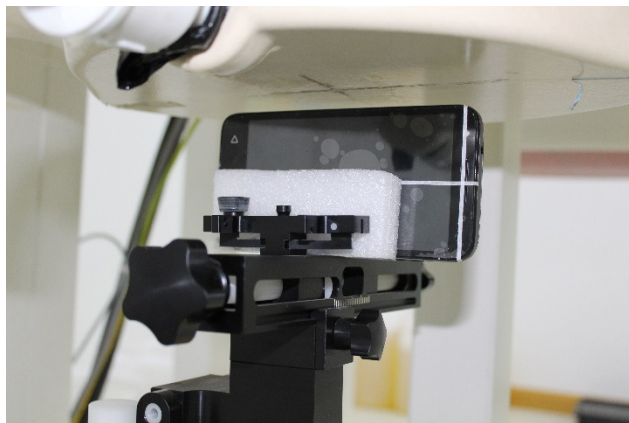


Photo 18: Right side 10mm

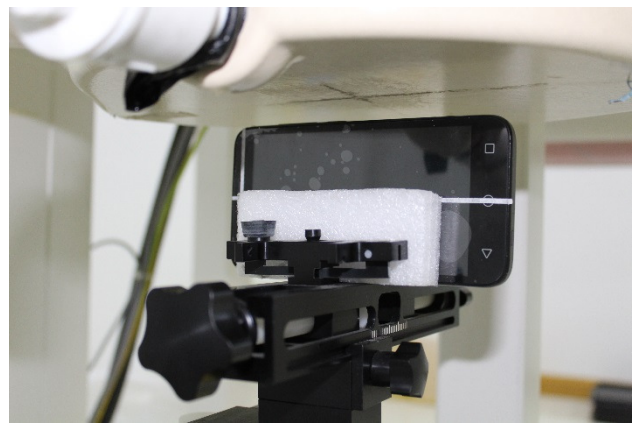


Photo 19: Bottom side 10mm

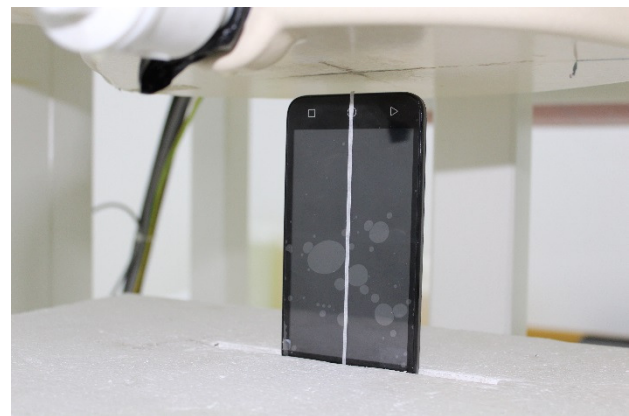
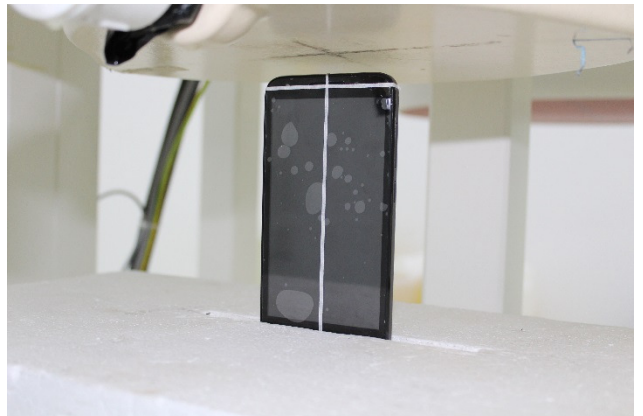


Photo 20: Top side 10mm



4. EUT Constructional Details

