



SAR TEST REPORT

No. I17Z62005-SEM01

For

TCL Communication Ltd.

A70A XL TMO

Model Name: 6062W

With

Hardware Version: 06

Software Version: v1A65

FCC ID: 2ACCJBT09

Issued Date: 2018-4-11



Note:

The test results in this test report relate only to the devices specified in this report. This report shall not be reproduced except in full without the written approval of CTTL.

The report must not be used by the client to claim product certification, approval, or endorsement by NVLAP, NIST, or any agency of the U.S. Government.

Test Laboratory:

CTTL, Telecommunication Technology Labs, CAICT

No. 51, Huayuan North Road, Haidian District, Beijing, P. R. China 100191.

Tel:+86(0)10-62304633-2512, Fax:+86(0)10-62304633-2504

Email: ctl_terminals@caict.ac.cn, website: www.caict.ac.cn



REPORT HISTORY

Report Number	Revision	Issue Date	Description
I17Z62005-SEM01	Rev.0	2018-4-11	Initial creation of test report



TABLE OF CONTENT

1	TEST LABORATORY	5
1.1	TESTING LOCATION	5
1.2	TESTING ENVIRONMENT	5
1.3	PROJECT DATA	5
1.4	SIGNATURE	5
2	STATEMENT OF COMPLIANCE	6
3	CLIENT INFORMATION	9
3.1	APPLICANT INFORMATION	9
3.2	MANUFACTURER INFORMATION	9
4	EQUIPMENT UNDER TEST (EUT) AND ANCILLARY EQUIPMENT (AE)	10
4.1	ABOUT EUT	10
4.2	INTERNAL IDENTIFICATION OF EUT USED DURING THE TEST	10
4.3	INTERNAL IDENTIFICATION OF AE USED DURING THE TEST	10
5	TEST METHODOLOGY	11
5.1	APPLICABLE LIMIT REGULATIONS	11
5.2	APPLICABLE MEASUREMENT STANDARDS	11
6	SPECIFIC ABSORPTION RATE (SAR)	12
6.1	INTRODUCTION	12
6.2	SAR DEFINITION	12
7	TISSUE SIMULATING LIQUIDS	13
7.1	TARGETS FOR TISSUE SIMULATING LIQUID	13
7.2	DIELECTRIC PERFORMANCE	13
8	SYSTEM VERIFICATION	21
8.1	SYSTEM SETUP	21
8.2	SYSTEM VERIFICATION	22
9	MEASUREMENT PROCEDURES	23
9.1	TESTS TO BE PERFORMED	23
9.2	GENERAL MEASUREMENT PROCEDURE	25
9.3	WCDMA MEASUREMENT PROCEDURES FOR SAR	26
9.4	SAR MEASUREMENT FOR LTE	27
9.5	BLUETOOTH & WI-FI MEASUREMENT PROCEDURES FOR SAR	27
9.6	POWER DRIFT	28
10	AREA SCAN BASED 1-G SAR	28
10.1	REQUIREMENT OF KDB	28
10.2	FAST SAR ALGORITHMS	28
11	CONDUCTED OUTPUT POWER	29



11.1	GSM MEASUREMENT RESULT	29
11.2	WCDMA MEASUREMENT RESULT.....	31
11.3	LTE MEASUREMENT RESULT	33
11.4	WI-FI AND BT MEASUREMENT RESULT	52
12	SIMULTANEOUS TX SAR CONSIDERATIONS	57
12.1	INTRODUCTION.....	57
12.2	TRANSMIT ANTENNA SEPARATION DISTANCES	57
12.3	SAR MEASUREMENT POSITIONS	58
12.4	STANDALONE SAR TEST EXCLUSION CONSIDERATIONS.....	58
13	EVALUATION OF SIMULTANEOUS.....	59
14	SAR TEST RESULT	61
14.1	SAR RESULTS	61
14.2	FULL SAR	85
14.3	2.4G WLAN EVALUATION	86
14.4	5G WLAN EVALUATION	90
15	SAR MEASUREMENT VARIABILITY	95
16	MEASUREMENT UNCERTAINTY	96
16.1	MEASUREMENT UNCERTAINTY FOR NORMAL SAR TESTS (300MHZ~3GHZ)	96
16.2	MEASUREMENT UNCERTAINTY FOR NORMAL SAR TESTS (3~6GHZ).....	97
16.3	MEASUREMENT UNCERTAINTY FOR FAST SAR TESTS (300MHZ~3GHZ).....	98
16.4	MEASUREMENT UNCERTAINTY FOR FAST SAR TESTS (3~6GHZ).....	99
17	MAIN TEST INSTRUMENTS.....	101
ANNEX A	GRAPH RESULTS.....	102
ANNEX B	SYSTEM VERIFICATION RESULTS.....	146
ANNEX C	SAR MEASUREMENT SETUP	165
ANNEX D	POSITION OF THE WIRELESS DEVICE IN RELATION TO THE PHANTOM	171
ANNEX E	EQUIVALENT MEDIA RECIPES	174
ANNEX F	SYSTEM VALIDATION	175
ANNEX G	PROBE CALIBRATION CERTIFICATE	176
ANNEX H	DIPOLE CALIBRATION CERTIFICATE.....	187
ANNEX I	ACCREDITATION CERTIFICATE.....	257

1 Test Laboratory

1.1 Testing Location

Company Name:	CTTL(Shouxiang)
Address:	No. 51 Shouxiang Science Building, Xueyuan Road, Haidian District, Beijing, P. R. China100191

1.2 Testing Environment

Temperature:	18°C~25 °C,
Relative humidity:	30%~ 70%
Ground system resistance:	< 0.5 Ω
Ambient noise & Reflection:	< 0.012 W/kg

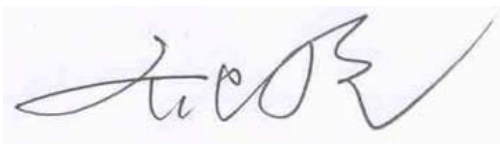
1.3 Project Data

Project Leader:	Qi Dianyuan
Test Engineer:	Lin Xiaojun
Testing Start Date:	April 1, 2018
Testing End Date:	April 7, 2018

1.4 Signature



Lin Xiaojun
(Prepared this test report)



Qi Dianyuan
(Reviewed this test report)



Lu Bingsong
Deputy Director of the laboratory
(Approved this test report)

2 Statement of Compliance

The maximum results of SAR found during testing for TCL Communication Ltd. A70A XL TMO 6062W is as follows:

Table 2.1: Highest Reported SAR (1g)

Exposure Configuration	Technology Band	Highest Reported SAR 1g (W/Kg)	Equipment Class
Head (Separation Distance 0mm)	GSM 850	0.08	PCE
	PCS 1900	0.09	
	UMTS FDD 2	0.20	
	UMTS FDD 4	0.15	
	UMTS FDD 5	0.12	
	LTE Band 2	0.19	
	LTE Band 5	0.09	
	LTE Band 7	0.06	
	LTE Band 12	0.54	
	LTE Band 13	0.14	
	LTE Band 66	0.12	
	LTE Band 71	0.43	
	WLAN 2.4 GHz	0.41	DTS
	WLAN 5 GHz	1.03	UNII
Hotspot (Separation Distance 10mm)	GSM 850	0.39	PCE
	PCS 1900	1.18	
	UMTS FDD 2	0.83	
	UMTS FDD 4	1.12	
	UMTS FDD 5	0.26	
	LTE Band 2	0.90	
	LTE Band 5	0.29	
	LTE Band 7	0.55	
	LTE Band 12	0.26	
	LTE Band 13	0.23	
	LTE Band 66	0.93	
	LTE Band 71	0.25	
	WLAN 2.4 GHz	0.53	DTS
	WLAN 5 GHz	0.49	UNII
Body worn (Separation Distance 15mm)	PCS 1900	0.41	PCE
	UMTS FDD 2	0.52	
	UMTS FDD 4	1.10	
	LTE Band 2	0.56	
	LTE Band 66	0.93	

The SAR values found for the Mobile Phone are below the maximum recommended levels of 1.6 W/Kg as averaged over any 1g tissue according to the ANSI C95.1-1992.

For body worn operation, this device has been tested and meets FCC RF exposure guidelines when

used with any accessory that contains no metal and which provides a minimum separation distance of 10 mm between this device and the body of the user. Use of other accessories may not ensure compliance with FCC RF exposure guidelines.

The EUT battery must be fully charged and checked periodically during the test to ascertain uniform power output.

The measurement together with the test system set-up is described in annex C of this test report. A detailed description of the equipment under test can be found in chapter 4 of this test report.

The highest reported SAR value is obtained at the case of **(Table 2.1)**, and the values are: **1.18 W/kg (1g)**.

Exposure Configuration	Technology Band	Position	Highest Reported SAR 10g (W/Kg)	Equipment Class
Body (Separation Distance 0mm)	PCS 1900	Front	0.43	PCE
	PCS 1900	Rear	0.59	
	PCS 1900	Bottom	0.92	
	UMTS FDD 2	Bottom	1.4	
	UMTS FDD 4	Rear	0.88	
	UMTS FDD 4	Bottom	1.63	
	LTE Band 2	Rear	0.89	
	LTE Band 2	Bottom	1.47	
	LTE Band 66	Rear	1.19	
	LTE Band 66	Bottom	1.31	

Table 2.2: The sum of reported SAR values for main antenna and 2.4G WiFi

	Position	Main antenna	WiFi	Sum
Highest reported SAR value for Head	Left hand, Touch cheek	0.43	0.41	0.84
Highest reported SAR value for Body 10mm	Rear	0.96	0.53	1.49
Highest reported SAR value for Body 15mm	Rear	1.10	0.25	1.35

Table 2.3: The sum of reported SAR values for main antenna and 5G WiFi

	Position	Main antenna	WiFi	Sum
Highest reported SAR value for Head	Right hand, Touch cheek	0.54	1.03	1.57
Highest reported SAR value for Body	Bottom	1.18	/	1.18
Highest reported SAR value for Body 15mm	Rear	1.10	0.22	1.32

Note: The test distance of Rear WiFi is 10mm. It should be higher than the value test with 10mm. So we think the sum is more conservative.

Table 2.3: The sum of reported SAR values for main antenna and BT

	Position	Main antenna	BT	Sum
Maximum reported SAR value for Head	Left hand, Touch cheek	0.54	0.33	0.87
Maximum reported SAR value for Body	Rear	1.18	0.17	1.35

[1] - Estimated SAR for Bluetooth (see the table 13.3)

According to the above tables, the highest sum of reported SAR values is **1.57 W/kg (1g)**. The detail for simultaneous transmission consideration is described in chapter 13.



3 Client Information

3.1 Applicant Information

Company Name	TCL Communication Ltd.
Company Address	7/F, Block F4, TCL Communication Technology Building, TCL International E City, Zhong Shan Yuan Road, Nanshan District, Shenzhen, Guangdong, P.R. China 518052
Post Code	518052
Contact Person	Zhizhou Gong
Tel	0086-755-36611722
Mobile	0086-18217635320
Fax	0086-755-36612000 ext: 81722
E-Mail	zhizhou.gong@tcl.com
Company URL	www.alcatel-mobile.com

3.2 Manufacturer Information

Company Name	TCL Communication Ltd.
Company Address	7/F, Block F4, TCL Communication Technology Building, TCL International E City, Zhong Shan Yuan Road, Nanshan District, Shenzhen, Guangdong, P.R. China 518052
Post Code	518052
Contact Person	Zhizhou Gong
Tel	0086-755-36611722
Mobile	0086-18217635320
Fax	0086-755-36612000 ext: 81722
E-Mail	zhizhou.gong@tcl.com
Company URL	www.alcatel-mobile.com

4 Equipment Under Test (EUT) and Ancillary Equipment (AE)

4.1 About EUT

Description:	A70A XL TMO
Model name:	6062W
Operating mode(s):	GSM 850/900/1800/1900 WCDMA850/1700/1900/2100 LTE B1/2/3/4/5/7/12/13/20/66/71, BT, WLAN
Tested Tx Frequency:	825 – 848.8 MHz (GSM 850)
	1850.2 – 1910 MHz (GSM 1900)
	826.4–846.6 MHz (WCDMA 850 Band V)
	1712.4 – 1752.6 MHz (WCDMA 1700 Band IV)
	1852.4–1907.6 MHz (WCDMA1900 Band II)
	1860 – 1900 MHz (LTE Band 2)
	824.7 – 848.3 MHz (LTE Band 5)
	2502.5 – 2567.5 MHz (LTE Band 7)
	699.7 – 715.3 MHz (LTE Band 12)
	779.5 –784.5 MHz (LTE Band 13)
	1710.7 –1779.3 MHz (LTE Band 66)
	665.5 – 695.5 MHz (LTE Band 71)
	2412 – 2462 MHz (Wi-Fi 2.4G)
	5.25 – 5.35 GHz UNII-2A
5.725 – 5.825 GHz UNII-3	
GPRS/EGPRS Multislot Class:	12
GPRS capability Class:	B
Test device Production information:	Production unit
Device type:	Portable device
Antenna type:	Integrated antenna
Hotspot mode:	Support
Product dimension	Long 162mm ;Wide 75mm ; Overall Diagonal 178.5mm

4.2 Internal Identification of EUT used during the test

EUT			
EUTID	IMEI	HW Version	SW Version
1	015126000202974	06	v1A65
2	015126000202941	06	v1A65
3	015126000202891	06	v1A65

*EUT ID: is used to identify the test sample in the lab internally.

Note: It is performed to test SAR with the EUT1 to 7 and conducted power with the EUT8.

4.3 Internal Identification of AE used during the test

AE ID	Description	Model	SN	Manufacturer
AE1	Battery	TLp038C1	CAC3860010C1	BYD

*AE ID: is used to identify the test sample in the lab internally.

5 TEST METHODOLOGY

5.1 Applicable Limit Regulations

ANSI C95.1–1992: IEEE Standard for Safety Levels with Respect to Human Exposure to Radio Frequency Electromagnetic Fields, 3 kHz to 300 GHz.

It specifies the maximum exposure limit of **1.6 W/kg** as averaged over any 1 gram of tissue for portable devices being used within 20 cm of the user in the uncontrolled environment.

5.2 Applicable Measurement Standards

IEEE 1528–2013: Recommended Practice for Determining the Peak Spatial-Average Specific Absorption Rate (SAR) in the Human Head from Wireless Communications Devices: Measurement Techniques.

KDB447498 D01 General RF Exposure Guidance v06: Mobile and Portable Devices RF Exposure Procedures and Equipment Authorization Policies.

KDB648474 D04 Handset SAR v01r03: SAR Evaluation Considerations for Wireless Handsets.

KDB941225 D01 SAR test for 3G devices v03r01: SAR Measurement Procedures for 3G Devices

KDB941225 D05 SAR for LTE Devices v02r05: SAR Evaluation Considerations for LTE Devices

KDB248227 D01 802.11 Wi-Fi SAR v02r02: SAR GUIDANCE FOR IEEE 802.11 (Wi-Fi) TRANSMITTERS

KDB865664 D01 SAR measurement 100 MHz to 6 GHz v01r04: SAR Measurement Requirements for 100 MHz to 6 GHz.

KDB865664 D02 RF Exposure Reporting v01r02: RF Exposure Compliance Reporting and Documentation Considerations

6 Specific Absorption Rate (SAR)

6.1 Introduction

SAR is related to the rate at which energy is absorbed per unit mass in an object exposed to a radio field. The SAR distribution in a biological body is complicated and is usually carried out by experimental techniques or numerical modeling. The standard recommends limits for two tiers of groups, occupational/controlled and general population/uncontrolled, based on a person's awareness and ability to exercise control over his or her exposure. In general, occupational/controlled exposure limits are higher than the limits for general population/uncontrolled.

6.2 SAR Definition

The SAR definition is the time derivative (rate) of the incremental energy (dW) absorbed by (dissipated in) an incremental mass (dm) contained in a volume element (dv) of a given density (ρ). The equation description is as below:

$$SAR = \frac{d}{dt} \left(\frac{dW}{dm} \right) = \frac{d}{dt} \left(\frac{dW}{\rho dv} \right)$$

SAR is expressed in units of Watts per kilogram (W/kg)

SAR measurement can be either related to the temperature elevation in tissue by

$$SAR = c \left(\frac{\delta T}{\delta t} \right)$$

Where: C is the specific heat capacity, δT is the temperature rise and δt is the exposure duration, or related to the electrical field in the tissue by

$$SAR = \frac{\sigma |E|^2}{\rho}$$

Where: σ is the conductivity of the tissue, ρ is the mass density of tissue and E is the RMS electrical field strength.

However for evaluating SAR of low power transmitter, electrical field measurement is typically applied.

7 Tissue Simulating Liquids

7.1 Targets for tissue simulating liquid

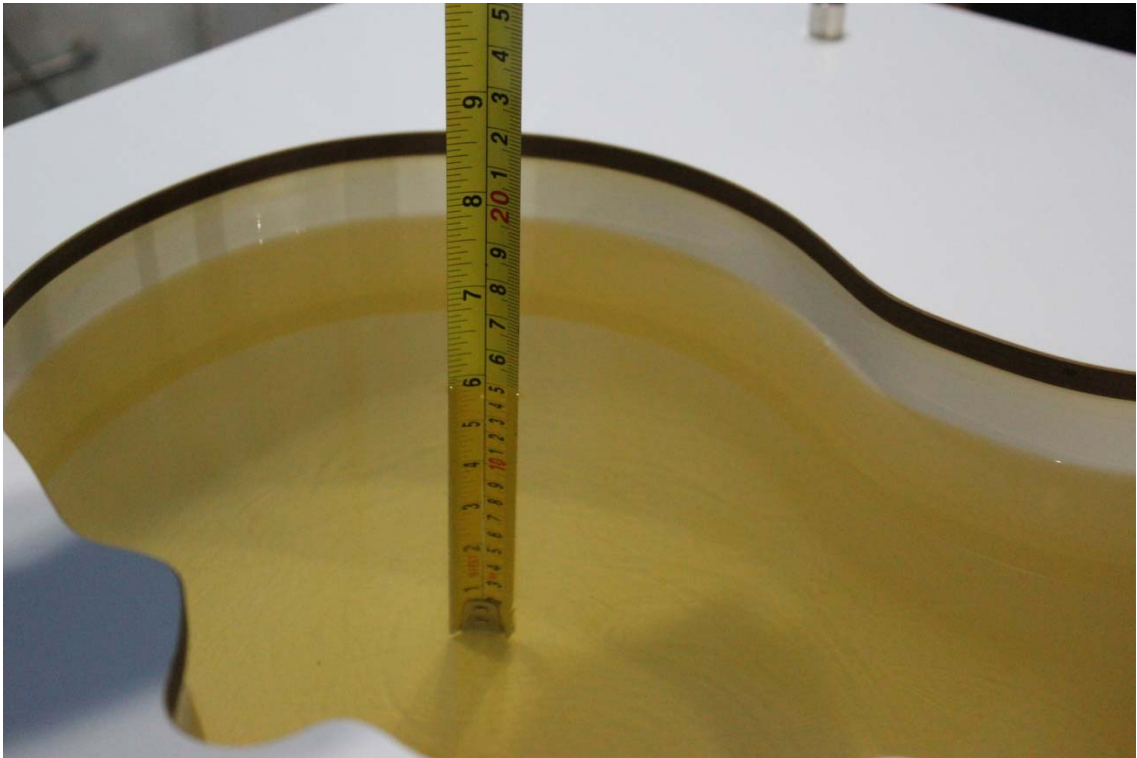
Table 7.1: Targets for tissue simulating liquid

Frequency(MHz)	Liquid Type	Conductivity(σ)	$\pm 5\%$ Range	Permittivity(ϵ)	$\pm 5\%$ Range
835	Head	0.90	0.86~0.95	41.5	39.4~43.6
835	Body	0.97	0.92~1.02	55.2	52.4~58.0
1900	Head	1.40	1.33~1.47	40.0	38.0~42.0
1900	Body	1.52	1.44~1.60	53.3	50.6~56.0
2450	Head	1.80	1.71~1.89	39.2	37.2~41.2
2450	Body	1.95	1.85~2.05	52.7	50.1~55.3
2600	Head	1.96	1.86~2.06	39.01	37.06~40.96
2600	Body	2.16	2.05~2.27	52.5	49.9~55.1
5250	Head	4.71	4.47~4.95	35.93	34.1~37.7
5250	Body	5.36	5.09~5.63	48.9	46.5~51.3
5600	Head	5.07	4.82~5.32	35.53	33.8~37.3
5600	Body	5.77	5.48~6.06	48.5	46.1~50.9
5750	Head	5.22	4.96~5.48	35.36	33.6~37.1
5750	Body	5.94	5.64~6.24	48.3	45.9~50.7

7.2 Dielectric Performance

Table 7.2: Dielectric Performance of Tissue Simulating Liquid

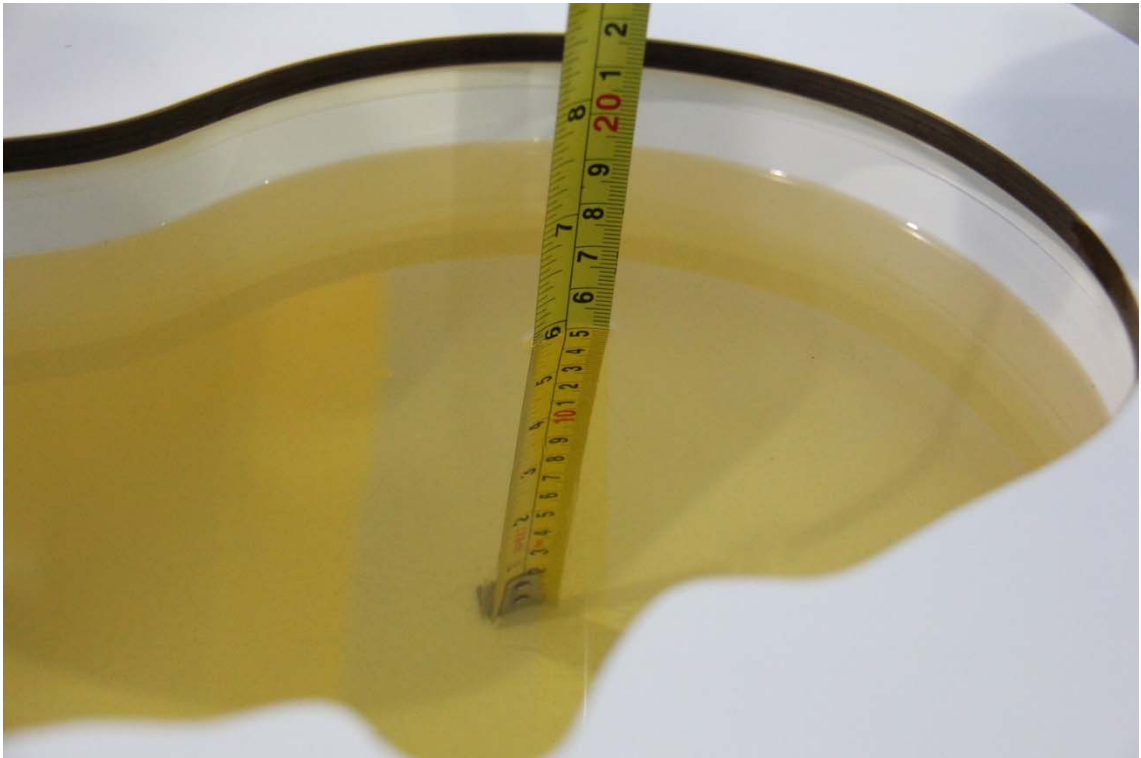
Measurement Date yyyy/mm/dd	Frequency	Type	Permittivity ϵ	Drift (%)	Conductivity σ (S/m)	Drift (%)
2018/4/1	750 MHz	Head	42.5	1.34	0.89	0.00
		Body	55.24	-0.47	0.97	1.04
2018/4/2	835 MHz	Head	40.69	-1.95	0.888	-1.33
		Body	54.43	-1.39	0.955	-1.55
2018/4/3	1750 MHz	Head	40.2	0.30	1.354	-1.17
		Body	53.07	-0.62	1.482	-0.54
2018/4/4	1900 MHz	Head	39.38	-1.55	1.411	0.79
		Body	52.85	-0.84	1.496	-1.58
2018/4/5	2450 MHz	Head	39.83	1.61	1.818	1.00
		Body	52.24	-0.87	1.947	-0.15
2018/4/6	2600 MHz	Head	39.01	0.00	1.956	-0.20
		Body	52.3	-0.38	2.177	0.79
2018/4/7	5250 MHz	Head	36.07	0.39	4.729	0.40
		Body	48.57	-0.67	5.364	0.07
2018/4/7	5600 MHz	Head	35.75	0.62	5.153	1.64
		Body	47.56	-1.94	5.873	1.79
2018/4/7	5750 MHz	Head	35.73	1.05	5.201	-0.36
		Body	48.46	0.33	5.506	0.29



Picture 7-1 Liquid depth in the Head Phantom (750 MHz)



Picture 7-2 Liquid depth in the Flat Phantom (750 MHz)



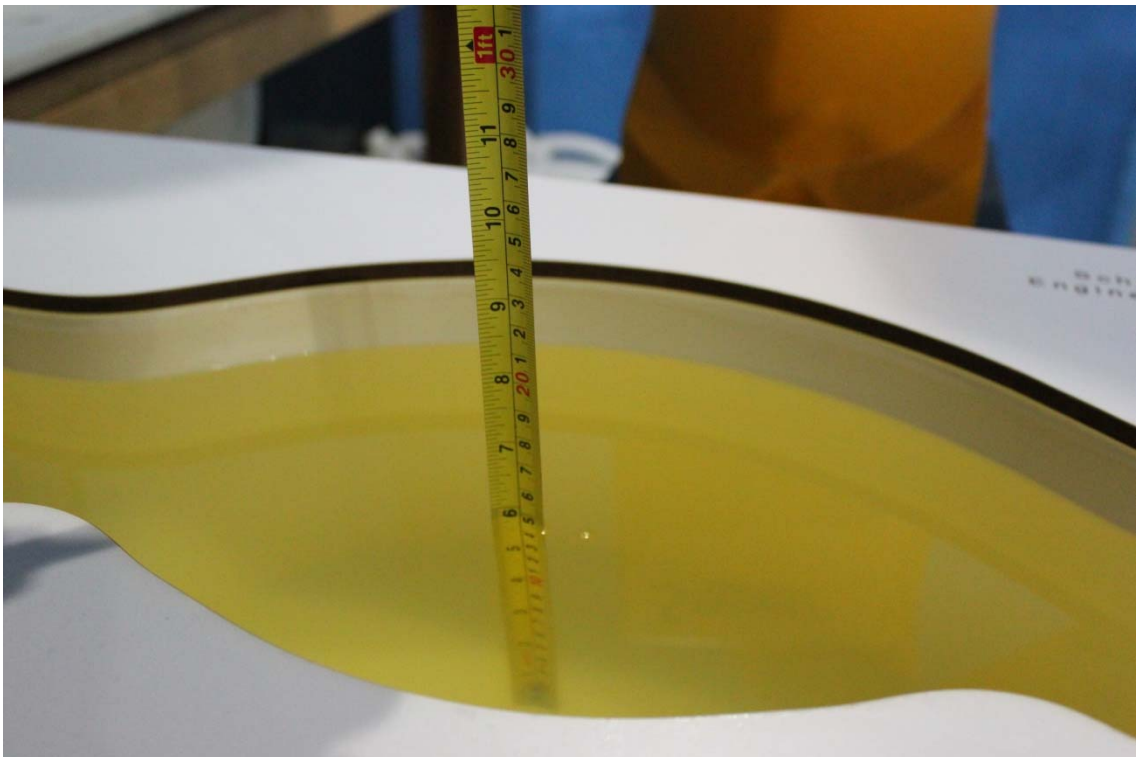
Picture 7-3 Liquid depth in the Head Phantom (835MHz)



Picture 7-4 Liquid depth in the Flat Phantom (835MHz)



Picture 7-5 Liquid depth in the Head Phantom (1750 MHz)



Picture 7-6 Liquid depth in the Flat Phantom (1750MHz)



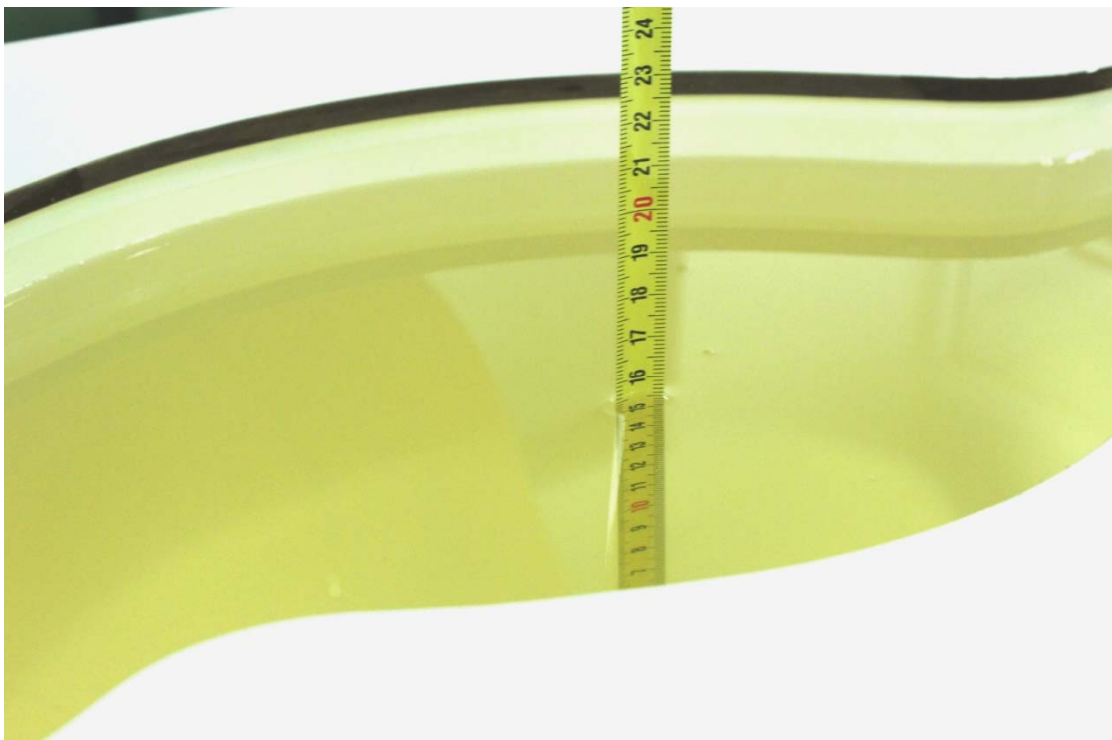
Picture 7-7 Liquid depth in the Head Phantom (1900 MHz)



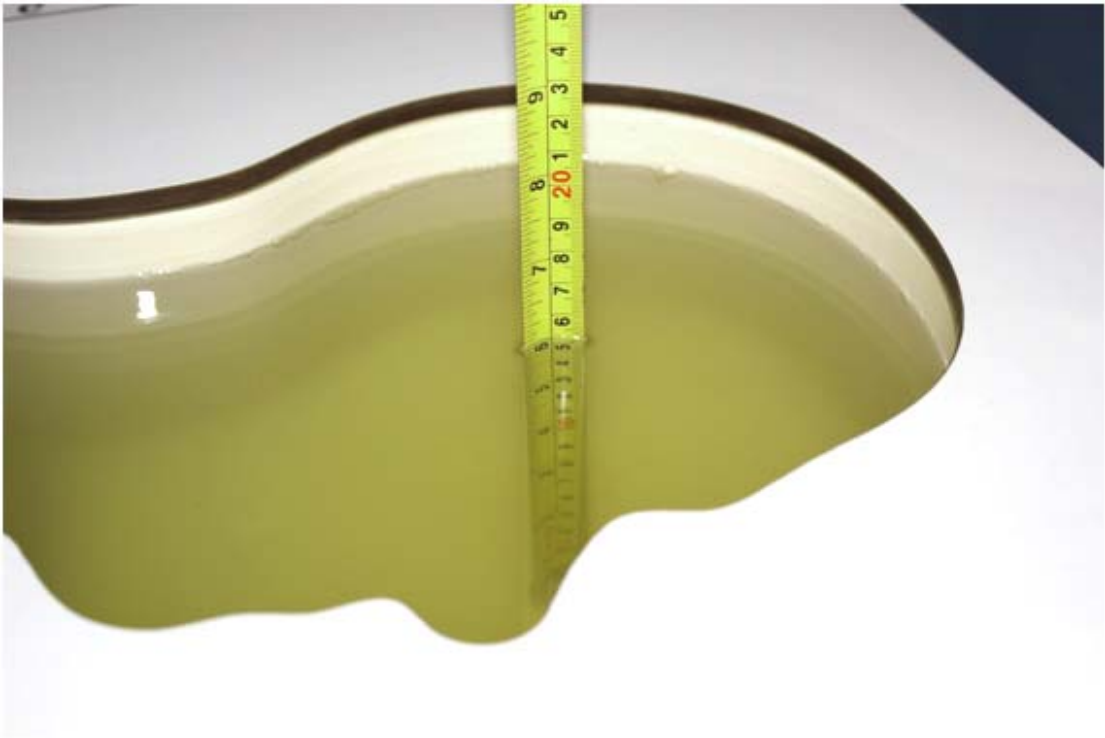
Picture 7-8 Liquid depth in the Flat Phantom (1900MHz)



Picture 7-9 Liquid depth in the Head Phantom (2450MHz)



Picture 7-10 Liquid depth in the Flat Phantom (2450MHz)



Picture 7-11 Liquid depth in the Head Phantom (2600 MHz Head)



Picture 7-12 Liquid depth in the Flat Phantom (2600MHz)



Picture 7-13 Liquid depth in the Head Phantom (5GHz)

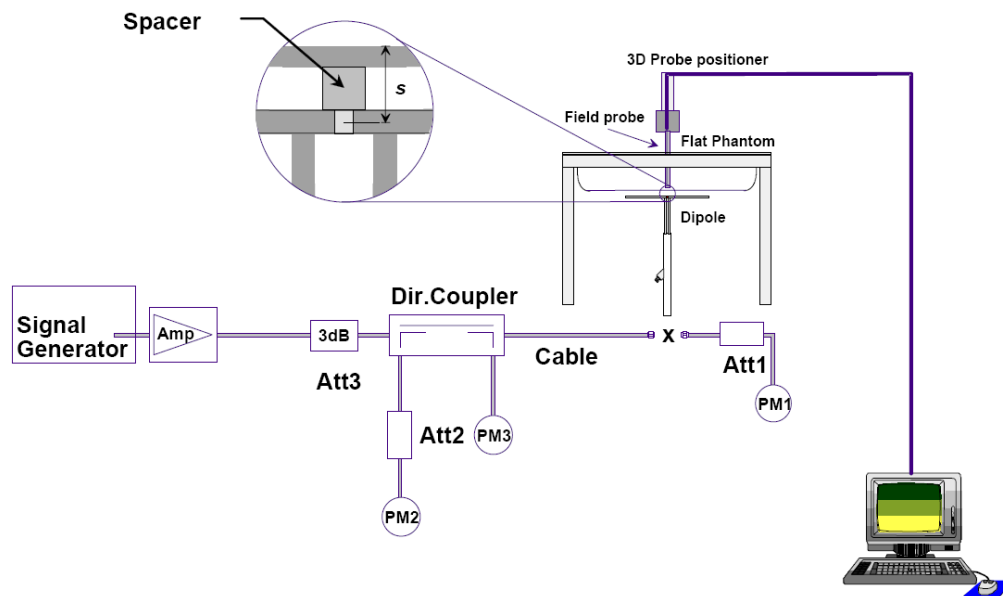


Picture 7-14 Liquid depth in the Flat Phantom (5GHz)

8 System verification

8.1 System Setup

In the simplified setup for system evaluation, the DUT is replaced by a calibrated dipole and the power source is replaced by a continuous wave that comes from a signal generator. The calibrated dipole must be placed beneath the flat phantom section of the SAM twin phantom with the correct distance holder. The distance holder should touch the phantom surface with a light pressure at the reference marking and be oriented parallel to the long side of the phantom. The equipment setup is shown below:



Picture 8.1 System Setup for System Evaluation



Picture 8.2 Photo of Dipole Setup

8.2 System Verification

SAR system verification is required to confirm measurement accuracy, according to the tissue dielectric media, probe calibration points and other system operating parameters required for measuring the SAR of a test device. The system verification must be performed for each frequency band and within the valid range of each probe calibration point required for testing the device.

The system verification results are required that the area scan estimated 1-g SAR is within 3% of the zoom scan 1-g SAR. The details are presented in annex B.

Table 8.1: System Verification of Head

Measurement Date (yyyy-mm-dd)	Frequency	Target value (W/kg)		Measured value (W/kg)		Deviation	
		10 g Average	1 g Average	10 g Average	1 g Average	10 g Average	1 g Average
2018/4/1	750 MHz	5.42	8.32	5.32	8.48	-1.85%	1.92%
2018/4/2	835 MHz	6.06	9.37	6	9.48	-0.99%	1.17%
2018/4/3	1750 MHz	19.4	36.7	19.76	36.56	1.86%	-0.38%
2018/4/4	1900 MHz	21.0	40.0	20.92	40.36	-0.38%	0.90%
2018/4/5	2450 MHz	24.7	52.2	25	51.72	1.21%	-0.92%
2018/4/6	2600 MHz	25.8	57.9	25.88	57.72	0.31%	-0.31%
2018/4/7	5250 MHz	23.7	82.7	24.0	82.2	1.10%	-0.60%
2018/4/7	5600 MHz	24.0	84.5	23.9	84.7	-0.33%	0.26%
2018/4/7	5750 MHz	22.8	80.4	23.1	79.6	1.23%	-1.00%

Table 8.2: System Verification of Body

Measurement Date (yyyy-mm-dd)	Frequency	Target value (W/kg)		Measured value (W/kg)		Deviation	
		10 g Average	1 g Average	10 g Average	1 g Average	10 g Average	1 g Average
2018/4/1	750 MHz	5.68	8.66	5.68	8.64	0.00%	-0.23%
2018/4/2	835 MHz	6.12	9.41	6.12	9.52	0.00%	1.17%
2018/4/3	1750 MHz	19.8	37.1	19.6	37.56	-1.01%	1.24%
2018/4/4	1900 MHz	21.5	40.5	21.88	40.76	1.77%	0.64%
2018/4/5	2450 MHz	23.8	50.4	24.16	50.4	1.51%	0.00%
2018/4/6	2600 MHz	24.8	55.5	25.08	55.6	1.13%	0.18%
2018/4/7	5250 MHz	21.3	76.6	20.9	77.2	-1.78%	0.73%
2018/4/7	5600 MHz	22.1	79.0	22.1	78.4	0.09%	-0.76%
2018/4/7	5750 MHz	21.6	77.8	21.4	79.2	-1.11%	1.80%

9 Measurement Procedures

9.1 Tests to be performed

In order to determine the highest value of the peak spatial-average SAR of a handset, all device positions, configurations and operational modes shall be tested for each frequency band according to steps 1 to 3 below. A flowchart of the test process is shown in picture 9.1.

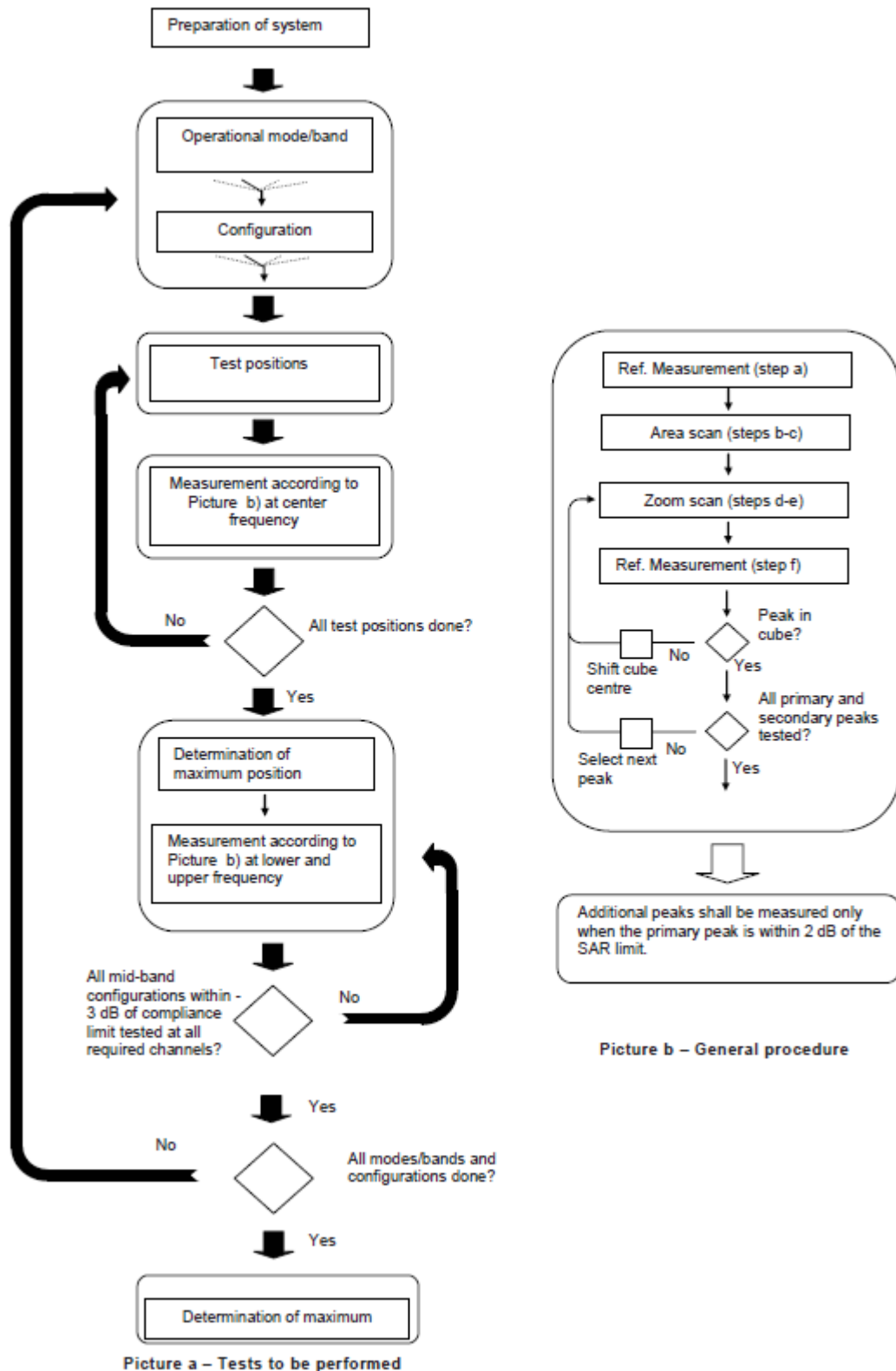
Step 1: The tests described in 9.2 shall be performed at the channel that is closest to the center of the transmit frequency band (f_c) for:

- a) all device positions (cheek and tilt, for both left and right sides of the SAM phantom, as described in annex D),
- b) all configurations for each device position in a), e.g., antenna extended and retracted, and
- c) all operational modes, e.g., analogue and digital, for each device position in a) and configuration in b) in each frequency band.

If more than three frequencies need to be tested according to 11.1 (i.e., $N_c > 3$), then all frequencies, configurations and modes shall be tested for all of the above test conditions.

Step 2: For the condition providing highest peak spatial-average SAR determined in Step 1, perform all tests described in 9.2 at all other test frequencies, i.e., lowest and highest frequencies. In addition, for all other conditions (device position, configuration and operational mode) where the peak spatial-average SAR value determined in Step 1 is within 3 dB of the applicable SAR limit, it is recommended that all other test frequencies shall be tested as well.

Step 3: Examine all data to determine the highest value of the peak spatial-average SAR found in Steps 1 to 2.



Picture 9.1 Block diagram of the tests to be performed

9.2 General Measurement Procedure

The area and zoom scan resolutions specified in the table below must be applied to the SAR measurements and fully documented in SAR reports to qualify for TCB approval. Probe boundary effect error compensation is required for measurements with the probe tip closer than half a probe tip diameter to the phantom surface. Both the probe tip diameter and sensor offset distance must satisfy measurement protocols; to ensure probe boundary effect errors are minimized and the higher fields closest to the phantom surface can be correctly measured and extrapolated to the phantom surface for computing 1-g SAR. Tolerances of the post-processing algorithms must be verified by the test laboratory for the scan resolutions used in the SAR measurements, according to the reference distribution functions specified in IEEE Std 1528-2013. The results should be documented as part of the system validation records and may be requested to support test results when all the measurement parameters in the following table are not satisfied.

		≤ 3 GHz	> 3 GHz
Maximum distance from closest measurement point (geometric center of probe sensors) to phantom surface		5 ± 1 mm	$\frac{1}{2} \cdot \delta \cdot \ln(2) \pm 0.5$ mm
Maximum probe angle from probe axis to phantom surface normal at the measurement location		$30^\circ \pm 1^\circ$	$20^\circ \pm 1^\circ$
Maximum area scan spatial resolution: $\Delta x_{Area}, \Delta y_{Area}$		≤ 2 GHz: ≤ 15 mm 2 – 3 GHz: ≤ 12 mm	3 – 4 GHz: ≤ 12 mm 4 – 6 GHz: ≤ 10 mm
		When the x or y dimension of the test device, in the measurement plane orientation, is smaller than the above, the measurement resolution must be \leq the corresponding x or y dimension of the test device with at least one measurement point on the test device.	
Maximum zoom scan spatial resolution: $\Delta x_{Zoom}, \Delta y_{Zoom}$		≤ 2 GHz: ≤ 8 mm 2 – 3 GHz: ≤ 5 mm*	3 – 4 GHz: ≤ 5 mm* 4 – 6 GHz: ≤ 4 mm*
Maximum zoom scan spatial resolution, normal to phantom surface	uniform grid: $\Delta z_{Zoom}(n)$	≤ 5 mm	3 – 4 GHz: ≤ 4 mm 4 – 5 GHz: ≤ 3 mm 5 – 6 GHz: ≤ 2 mm
	graded grid $\Delta z_{Zoom}(1)$: between 1 st two points closest to phantom surface	≤ 4 mm	3 – 4 GHz: ≤ 3 mm 4 – 5 GHz: ≤ 2.5 mm 5 – 6 GHz: ≤ 2 mm
	$\Delta z_{Zoom}(n>1)$: between subsequent points	$\leq 1.5 \cdot \Delta z_{Zoom}(n-1)$	
Minimum zoom scan volume	x, y, z	≥ 30 mm	3 – 4 GHz: ≥ 28 mm 4 – 5 GHz: ≥ 25 mm 5 – 6 GHz: ≥ 22 mm
Note: δ is the penetration depth of a plane-wave at normal incidence to the tissue medium; see draft standard IEEE P1528-2011 for details. * When zoom scan is required and the <i>reported</i> SAR from the area scan based 1-g SAR estimation procedures of KDB 447498 is ≤ 1.4 W/kg, ≤ 8 mm, ≤ 7 mm and ≤ 5 mm zoom scan resolution may be applied, respectively, for 2 GHz to 3 GHz, 3 GHz to 4 GHz and 4 GHz to 6 GHz.			

9.3 WCDMA Measurement Procedures for SAR

The following procedures are applicable to WCDMA handsets operating under 3GPP Release99, Release 5 and Release 6. The default test configuration is to measure SAR with an established radio link between the DUT and a communication test set using a 12.2kbps RMC (reference measurement channel) configured in Test Loop Mode 1. SAR is selectively confirmed for other physical channel configurations (DPCCH & DPDCH_n), HSDPA and HSPA (HSUPA/HSDPA) modes according to output power, exposure conditions and device operating capabilities. Both uplink and downlink should be configured with the same RMC or AMR, when required. SAR for Release 5 HSDPA and Release 6 HSPA are measured using the applicable FRC (fixed reference channel) and E-DCH reference channel configurations. Maximum output power is verified according to applicable versions of 3GPP TS 34.121 and SAR must be measured according to these maximum output conditions. When Maximum Power Reduction (MPR) is not implemented according to Cubic Metric (CM) requirements for Release 6 HSPA, the following procedures do not apply.

For Release 5 HSDPA Data Devices:

Sub-test	β_c	β_d	β_d (SF)	β_c / β_d	β_{hs}	CM/dB
1	2/15	15/15	64	2/15	4/15	0.0
2	12/15	15/15	64	12/15	24/25	1.0
3	15/15	8/15	64	15/8	30/15	1.5
4	15/15	4/15	64	15/4	30/15	1.5

For Release 6 HSPA Data Devices

Sub-test	β_c	β_d	β_d (SF)	β_c / β_d	β_{hs}	β_{ec}	β_{ed}	β_{ed} (SF)	β_{ed} (codes)	CM (dB)	MPR (dB)	AG Index	E-TFCI
1	11/15	15/15	64	11/15	22/15	209/225	1039/225	4	1	1.5	1.5	20	75
2	6/15	15/15	64	6/15	12/15	12/15	12/15	4	1	1.5	1.5	12	67
3	15/15	9/15	64	15/9	30/15	30/15	$\beta_{ed1}:47/15$ $\beta_{ed2}:47/15$	4	2	1.5	1.5	15	92
4	2/15	15/15	64	2/15	4/15	4/15	56/75	4	1	1.5	1.5	17	71
5	15/15	15/15	64	15/15	24/15	30/15	134/15	4	1	1.5	1.5	21	81

Rel.8 DC-HSDPA (Cat 24)

SAR test exclusion for Rel.8 DC-HSDPA must satisfy the SAR test exclusion requirements of Rel.5 HSDPA. SAR test exclusion for DC-HSDPA devices is determined by power measurements according to the H-Set 12, Fixed Reference Channel (FRC) configuration in Table C.8.1.12 of 3GPP TS 34.121-1. A primary and a secondary serving HS-DSCH Cell are required to perform the power measurement and for the results to qualify for SAR test exclusion.

9.4 SAR Measurement for LTE

SAR tests for LTE are performed with a base station simulator, Rohde & Schwarz CMW500. Closed loop power control was used so the UE transmits with maximum output power during SAR testing. All powers were measured with the CMW 500.

It is performed for conducted power and SAR based on the KDB941225 D05.

SAR is evaluated separately according to the following procedures for the different test positions in each exposure condition – head, body, body-worn accessories and other use conditions. The procedures in the following subsections are applied separately to test each LTE frequency band.

1) QPSK with 1 RB allocation

Start with the largest channel bandwidth and measure SAR for QPSK with 1 RB allocation, using the RB offset and required test channel combination with the highest maximum output power among RB offsets at the upper edge, middle and lower edge of each required test channel. When the reported SAR is ≤ 0.8 W/kg, testing of the remaining RB offset configurations and required test channels is not required for 1 RB allocation; otherwise, SAR is required for the remaining required test channels and only for the RB offset configuration with the highest output power for that channel. When the reported SAR of a required test channel is > 1.45 W/kg, SAR is required for all three RB offset configurations for that required test channel.

2) QPSK with 50% RB allocation

The procedures required for 1 RB allocation in 1) are applied to measure the SAR for QPSK with 50% RB allocation.

3) QPSK with 100% RB allocation

For QPSK with 100% RB allocation, SAR is not required when the highest maximum output power for 100 % RB allocation is less than the highest maximum output power in 50% and 1 RB allocations and the highest reported SAR for 1 RB and 50% RB allocation in 1) and 2) are ≤ 0.8 W/kg. Otherwise, SAR is measured for the highest output power channel; and if the reported SAR is > 1.45 W/kg, the remaining required test channels must also be tested.

9.5 Bluetooth & Wi-Fi Measurement Procedures for SAR

Normal network operating configurations are not suitable for measuring the SAR of 802.11 transmitters in general. Unpredictable fluctuations in network traffic and antenna diversity conditions can introduce undesirable variations in SAR results. The SAR for these devices should be measured using chipset based test mode software to ensure that the results are consistent and reliable.

Chipset based test mode software is hardware dependent and generally varies among manufacturers. The device operating parameters established in a test mode for SAR measurements must be identical to those programmed in production units, including output power levels, amplifier gain settings and other RF performance tuning parameters. The test frequencies should correspond to actual channel frequencies defined for domestic use. SAR for devices with switched diversity should be measured with only one antenna transmitting at a time during each SAR measurement, according to a fixed modulation and data rate. The same data pattern should be used for all measurements.

9.6 Power Drift

To control the output power stability during the SAR test, DASY4 system calculates the power drift by measuring the E-field at the same location at the beginning and at the end of the measurement for each test position. These drift values can be found in section 14 labeled as: (Power Drift [dB]). This ensures that the power drift during one measurement is within 5%.

10 Area Scan Based 1-g SAR

10.1 Requirement of KDB

According to the KDB447498 D01 v05, when the implementation is based the specific polynomial fit algorithm as presented at the 29th Bioelectromagnetics Society meeting (2007) and the estimated 1-g SAR is ≤ 1.2 W/kg, a zoom scan measurement is not required provided it is also not needed for any other purpose; for example, if the peak SAR location required for simultaneous transmission SAR test exclusion can be determined accurately by the SAR system or manually to discriminate between distinctive peaks and scattered noisy SAR distributions from area scans.

There must not be any warning or alert messages due to various measurement concerns identified by the SAR system; for example, noise in measurements, peaks too close to scan boundary, peaks are too sharp, spatial resolution and uncertainty issues etc. The SAR system verification must also demonstrate that the area scan estimated 1-g SAR is within 3% of the zoom scan 1-g SAR (See Annex B). When all the SAR results for each exposure condition in a frequency band and wireless mode are based on estimated 1-g SAR, the 1-g SAR for the highest SAR configuration must be determined by a zoom scan.

10.2 Fast SAR Algorithms

The approach is based on the area scan measurement applying a frequency dependent attenuation parameter. This attenuation parameter was empirically determined by analyzing a large number of phones. The MOTOROLA FAST SAR was developed and validated by the MOTOROLA Research Group in Ft. Lauderdale.

In the initial study, an approximation algorithm based on Linear fit was developed. The accuracy of the algorithm has been demonstrated across a broad frequency range (136-2450 MHz) and for both 1- and 10-g averaged SAR using a sample of 264 SAR measurements from 55 wireless handsets. For the sample size studied, the root-mean-squared errors of the algorithm are 1.2% and 5.8% for 1- and 10-g averaged SAR, respectively. The paper describing the algorithm in detail is expected to be published in August 2004 within the Special Issue of Transactions on MTT.

In the second step, the same research group optimized the fitting algorithm to an Polynomial fit whereby the frequency validity was extended to cover the range 30-6000MHz. Details of this study can be found in the BEMS 2007 Proceedings.

Both algorithms are implemented in DASY software.

11 Conducted Output Power

11.1 GSM Measurement result

During the process of testing, the EUT was controlled via Agilent Digital Radio Communication tester (E5515C) to ensure the maximum power transmission and proper modulation. This result contains conducted output power for the EUT. In all cases, the measured peak output power should be greater and within 5% than EMI measurement.

Table 11-1 GSM850 #1

GSM850 #1								
Config	Tune-up	Measured Power (dBm)			Calculation	Frame Burst Power (dBm)		
		CH251 848.8 MHz	CH190 836.6 MHz	CH128 824.2 MHz		CH251 848.8 MHz	CH190 836.6 MHz	CH128 824.2 MHz
GSM Speech	33.00	32.65	32.77	32.74				
GPRS 1 Txslot	33.00	32.64	32.77	32.74	-9.03	23.61	23.74	23.71
GPRS 2 Txslots	32.50	32.05	32.18	32.16	-6.02	26.03	26.16	26.14
GPRS 3 Txslots	31.00	30.43	30.56	30.54	-4.26	26.17	26.30	26.28
GPRS 4 Txslots	30.00	29.33	29.49	29.45	-3.01	26.32	26.48	26.44
EGPRS GMSK 1 Txslot	33.00	32.65	32.77	32.74	-9.03	23.62	23.74	23.71
EGPRS GMSK 2 Txslots	32.50	32.06	32.18	32.15	-6.02	26.04	26.16	26.13
EGPRS GMSK 3 Txslots	31.00	30.45	30.56	30.54	-4.26	26.19	26.30	26.28
EGPRS GMSK 4 Txslots	30.00	29.34	29.48	29.44	-3.01	26.33	26.47	26.43
EGPRS 8PSK 1 Txslot	28.00	27.70	27.76	27.96	-9.03	18.67	18.73	18.93
EGPRS 8PSK 2 Txslots	27.00	26.65	26.64	26.68	-6.02	20.63	20.62	20.66
EGPRS 8PSK 3 Txslots	25.00	24.80	24.51	24.56	-4.26	20.54	20.25	20.30
EGPRS 8PSK 4 Txslots	24.00	23.50	23.50	23.56	-3.01	20.49	20.49	20.55

Table 11-2 PCS1900 #1 AP OFF

PCS1900 #1								
Config	Tune-up	Measured Power (dBm)			Calculation	Frame Burst Power (dBm)		
		CH810 1909.8 MHz	CH661 1880 MHz	CH512 1850.2 MHz		CH810 1909.8 MHz	CH661 1880 MHz	CH512 1850.2 MHz
GSM Speech	30.50	29.72	29.90	30.44				
GPRS 1 Txslot	30.50	29.68	29.93	30.39	-9.03	20.65	20.90	21.36
GPRS 2 Txslots	30.00	28.95	29.12	29.64	-6.02	22.93	23.10	23.62
GPRS 3 Txslots	28.00	27.22	27.37	27.63	-4.26	22.96	23.11	23.37
GPRS 4 Txslots	26.50	26.08	26.10	26.36	-3.01	23.07	23.09	23.35
EGPRS GMSK 1 Txslot	30.50	29.62	29.93	30.37	-9.03	20.59	20.90	21.34
EGPRS GMSK 2 Txslots	30.00	28.95	29.11	29.65	-6.02	22.93	23.09	23.63
EGPRS GMSK 3 Txslots	28.00	27.16	27.38	27.63	-4.26	22.90	23.12	23.37
EGPRS GMSK 4 Txslots	26.50	26.04	26.10	26.36	-3.01	23.03	23.09	23.35
EGPRS 8PSK 1 Txslot	26.50	26.02	26.08	26.45	-9.03	16.99	17.05	17.42
EGPRS 8PSK 2 Txslots	25.50	25.23	25.01	25.29	-6.02	19.21	18.99	19.27
EGPRS 8PSK 3 Txslots	23.50	22.82	22.87	23.18	-4.26	18.56	18.61	18.92
EGPRS 8PSK 4 Txslots	22.00	21.43	21.53	21.90	-3.01	18.42	18.52	18.89

Table 11-3 PCS1900 #2 AP ON

PCS1900 #2								
Config	Tune-up	Measured Power (dBm)			Calculation	Frame Burst Power (dBm)		
		CH810 1909.8 MHz	CH661 1880 MHz	CH512 1850.2 MHz		CH810 1909.8 MHz	CH661 1880 MHz	CH512 1850.2 MHz
GSM Speech	25.00	24.45	24.34	24.67				
GPRS 1 Txslot	25.00	24.38	24.34	24.67	-9.03	15.35	15.31	15.64
GPRS 2 Txslots	25.00	24.37	24.33	24.66	-6.02	18.35	18.31	18.64
GPRS 3 Txslots	25.00	24.35	24.31	24.65	-4.26	20.09	20.05	20.39
GPRS 4 Txslots	25.00	24.33	24.30	24.64	-3.01	21.32	21.29	21.63
EGPRS GMSK 1 Txslot	25.00	24.37	24.33	24.66	-9.03	15.34	15.30	15.63
EGPRS GMSK 2 Txslots	25.00	24.36	24.32	24.65	-6.02	18.34	18.30	18.63
EGPRS GMSK 3 Txslots	25.00	24.34	24.30	24.65	-4.26	20.08	20.04	20.39
EGPRS GMSK 4 Txslots	25.00	24.33	24.29	24.64	-3.01	21.32	21.28	21.63
EGPRS 8PSK 1 Txslot	21.50	20.78	20.84	20.98	-9.03	11.75	11.81	11.95
EGPRS 8PSK 2 Txslots	21.50	20.47	20.53	20.84	-6.02	14.45	14.51	14.82
EGPRS 8PSK 3 Txslots	21.50	20.28	20.51	20.58	-4.26	16.02	16.25	16.32
EGPRS 8PSK 4 Txslots	21.50	19.79	19.90	20.17	-3.01	16.78	16.89	17.16

NOTES:

Division Factors

To average the power, the division factor is as follows:

1TX-slot = 1 transmit time slot out of 8 time slots=> conducted power divided by (8/1) => -9.03dB

2TX-slots = 2 transmit time slots out of 8 time slots=> conducted power divided by (8/2) => -6.02dB

3TX-slots = 3 transmit time slots out of 8 time slots=> conducted power divided by (8/3) => -4.26dB

4TX-slots = 4 transmit time slots out of 8 time slots=> conducted power divided by (8/4) => -3.01dB

According to the conducted power as above, the body measurements are performed with 4Txslots for 850MHz and 1900MHz AP ON. 2Txslots for 1900MHz AP OFF

11.2 WCDMA Measurement result

WCDMA1900-BII #1 AP OFF					
Item		Tune-up	Measured Power (dBm)		
			CH9538 1907.6 MHz	CH9400 1880 MHz	CH9262 1852.4 MHz
WCDMA	RMC	24.00	23.98	23.88	23.95
HSUPA	subtest1	21.00	20.89	20.74	20.79
	subtest2	21.00	20.90	20.77	20.81
	subtest3	22.00	21.93	21.70	21.75
	subtest4	21.00	20.50	20.28	20.32
	subtest5	22.00	21.89	21.68	21.66
HSPA+	\	\	\	\	\
DC-HSDPA	subtest1	23.00	22.36	22.10	22.26
	subtest2	23.00	22.30	22.08	22.28
	subtest3	23.00	22.35	22.03	22.27
	subtest4	23.00	22.34	22.08	22.25
WCDMA1900-BII #2 AP ON					
Item		Tune-up	Measured Power (dBm)		
			CH9538 1907.6 MHz	CH9400 1880 MHz	CH9262 1852.4 MHz
WCDMA	RMC	21.00	20.44	20.27	20.45
HSUPA	subtest1	19.00	18.32	18.16	18.21
	subtest2	19.00	18.36	18.15	18.22
	subtest3	21.00	19.39	19.19	19.25
	subtest4	19.00	17.84	17.69	17.75
	subtest5	21.00	19.29	19.10	19.13
HSPA+	\	\	\	\	\
DC-HSDPA	subtest1	21.00	20.62	20.33	20.49
	subtest2	21.00	20.59	20.37	20.53
	subtest3	21.00	20.05	19.88	20.04
	subtest4	21.00	20.04	19.87	20.01
WCDMA1700-BIV #1 AP OFF					
Item		Tune-up	Measured Power (dBm)		
			CH1513 1752.6 MHz	CH1412 1732.4 MHz	CH1312 1712.4 MHz
WCDMA	RMC	24.20	24.04	24.05	24.08
HSUPA	subtest1	21.00	20.72	20.76	20.86
	subtest2	21.00	20.72	20.76	20.79
	subtest3	22.00	21.70	21.74	21.81
	subtest4	21.00	20.24	20.30	20.38
	subtest5	22.00	21.65	21.67	21.70
HSPA+	\	\	\	\	\
DC-HSDPA	subtest1	23.00	22.30	22.29	22.31
	subtest2	23.00	22.32	22.30	22.30
	subtest3	23.00	22.18	22.31	22.28
	subtest4	23.00	22.25	22.29	22.29



WCDMA1700-BIV #2 AP ON					
Item		Tune-up	Measured Power (dBm)		
			CH1513 1752.6 MHz	CH1412 1732.4 MHz	CH1312 1712.4 MHz
WCDMA	RMC	21.20	20.02	20.01	20.04
HSUPA	subtest1	18.00	17.71	17.77	17.84
	subtest2	18.00	17.68	17.76	17.80
	subtest3	19.00	18.70	18.74	18.81
	subtest4	18.00	17.19	17.29	17.33
	subtest5	19.00	18.64	18.69	18.71
HSPA+	\	\	\	\	\
DC-HSDPA	subtest1	21.00	20.01	20.04	20.06
	subtest2	21.00	20.04	20.03	20.05
	subtest3	20.00	19.61	19.54	19.55
	subtest4	20.00	19.58	19.56	19.53
WCDMA850-BV #1					
Item		Tune-up	Measured Power (dBm)		
			CH4233 846.6 MHz	CH4182 835.4 MHz	CH4132 826.4 MHz
WCDMA	RMC	24.00	23.91	23.89	23.85
HSUPA	subtest1	21.00	20.57	20.50	20.38
	subtest2	21.00	20.55	20.50	20.39
	subtest3	22.00	21.54	21.43	21.36
	subtest4	21.00	20.08	20.01	19.89
	subtest5	22.00	21.47	21.37	21.34
HSPA+	\	\	\	\	\
DC-HSDPA	subtest1	23.00	22.99	22.87	22.71
	subtest2	23.00	22.96	22.86	22.75
	subtest3	23.00	22.44	22.37	22.25
	subtest4	23.00	22.42	22.36	22.24

11.3 LTE Measurement result

Table 11-4 LTE1900-FDD2 #1 AP OFF

LTE1900-FDD2 #1										
SN	BandWidth	RB No./Start	Channel	Tune-up	Measured Power (dBm) & MPR					
					QPSK		16QAM			
					Measured Power	MPR	Measured Power	MPR		
	1.4MHz	1H	19193	24	23.24	0	22.16	1		
			18900	24	23.14	0	22.20	1		
			18607	24	23.11	0	22.46	1		
		1M	19193	24	23.38	0	22.33	1		
			18900	24	23.25	0	22.36	1		
			18607	24	23.27	0	22.57	1		
		1L	19193	24	23.14	0	22.18	1		
			18900	24	23.00	0	22.19	1		
			18607	24	23.01	0	22.47	1		
		3H	19193	24	23.20	0	22.45	1		
			18900	24	23.12	0	22.25	1		
			18607	24	23.11	0	22.40	1		
		3M	19193	24	23.31	0	22.55	1		
			18900	24	23.14	0	22.28	1		
			18607	24	23.13	0	22.41	1		
		3L	19193	24	23.23	0	22.46	1		
			18900	24	23.16	0	22.30	1		
			18607	24	23.11	0	22.40	1		
		6	19193	24	22.26	1	21.46	2		
			18900	24	22.13	1	21.25	2		
			18607	24	22.09	1	21.39	2		
			3MHz	1H	19185	24	23.20	0	22.22	1
					18900	24	23.16	0	22.11	1
					18615	24	23.18	0	22.54	1
				1M	19185	24	23.35	0	22.39	1
					18900	24	23.29	0	22.20	1
					18615	24	23.29	0	22.63	1
1L	19185			24	23.31	0	22.33	1		
	18900			24	23.16	0	22.18	1		
	18615			24	23.15	0	22.56	1		
8H	19185			24	22.17	1	21.30	2		
	18900			24	22.12	1	21.27	2		
	18615			24	22.16	1	21.27	2		
8M	19185			24	22.26	1	21.38	2		
	18900			24	22.19	1	21.35	2		
	18615			24	22.19	1	21.32	2		
8L	19185			24	22.25	1	21.32	2		
	18900			24	22.18	1	21.29	2		
	18615			24	22.19	1	21.31	2		
15	19185			24	22.27	1	21.24	2		
	18900			24	22.17	1	21.22	2		
	18615			24	22.16	1	21.25	2		
	5MHz			1H	19175	24	23.15	0	22.27	1
					18900	24	23.13	0	22.24	1
					18625	24	23.07	0	22.56	1
				1M	19175	24	23.43	0	22.52	1
					18900	24	23.40	0	22.46	1
					18625	24	23.29	0	22.78	1
		1L	19175	24	23.21	0	22.30	1		
			18900	24	23.17	0	22.24	1		
			18625	24	23.07	0	22.58	1		
		12H	19175	24	22.25	1	21.31	2		
			18900	24	22.13	1	21.22	2		
			18625	24	22.12	1	21.27	2		
		12M	19175	24	22.29	1	21.37	2		
			18900	24	22.19	1	21.29	2		
			18625	24	22.20	1	21.35	2		
		12L	19175	24	22.29	1	21.38	2		
			18900	24	22.13	1	21.23	2		
			18625	24	22.17	1	21.27	2		
		25	19175	24	22.30	1	21.24	2		
			18900	24	22.16	1	21.17	2		
			18625	24	22.17	1	21.22	2		

10MHz	1H	19150	24	23.11	0	22.14	1	
		18900	24	23.08	0	21.99	1	
		18650	24	23.10	0	22.41	1	
	1M	19150	24	23.28	0	22.37	1	
		18900	24	23.22	0	22.16	1	
		18650	24	23.25	0	22.56	1	
	1L	19150	24	23.12	0	22.19	1	
		18900	24	23.11	0	22.00	1	
		18650	24	23.18	0	22.49	1	
	25H	19150	24	22.28	1	21.40	2	
		18900	24	22.19	1	21.18	2	
		18650	24	22.21	1	21.19	2	
	25M	19150	24	22.30	1	21.43	2	
		18900	24	22.26	1	21.25	2	
		18650	24	22.26	1	21.26	2	
	25L	19150	24	22.33	1	21.46	2	
		18900	24	22.19	1	21.21	2	
		18650	24	22.26	1	21.28	2	
	50	19150	24	22.29	1	21.36	2	
		18900	24	22.21	1	21.18	2	
		18650	24	22.24	1	21.21	2	
	15MHz	1H	19125	24	23.11	0	22.47	1
			18900	24	22.87	0	21.86	1
			18675	24	23.04	0	22.40	1
1M		19125	24	23.18	0	22.60	1	
		18900	24	23.10	0	22.10	1	
		18675	24	23.14	0	22.51	1	
1L		19125	24	23.05	0	22.47	1	
		18900	24	23.04	0	22.00	1	
		18675	24	23.14	0	22.46	1	
36H		19125	24	22.24	1	21.21	2	
		18900	24	22.15	1	21.13	2	
		18675	24	22.20	1	21.23	2	
36M		19125	24	22.30	1	21.27	2	
		18900	24	22.15	1	21.16	2	
		18675	24	22.22	1	21.29	2	
36L		19125	24	22.27	1	21.25	2	
		18900	24	22.16	1	21.17	2	
		18675	24	22.28	1	21.25	2	
75		19125	24	22.30	1	21.26	2	
		18900	24	22.19	1	21.14	2	
		18675	24	22.23	1	21.21	2	
20MHz		1H	19100	24	22.87	0	22.46	1
			18900	24	22.79	0	22.25	1
			18700	24	22.83	0	22.41	1
	1M	19100	24	23.19	0	22.75	1	
		18900	24	23.20	0	22.64	1	
		18700	24	23.24	0	22.75	1	
	1L	19100	24	22.83	0	22.39	1	
		18900	24	22.91	0	22.40	1	
		18700	24	22.98	0	22.54	1	
	50H	19100	24	22.04	1	21.14	2	
		18900	24	22.03	1	21.01	2	
		18700	24	22.07	1	21.10	2	
	50M	19100	24	22.13	1	21.22	2	
		18900	24	22.09	1	21.12	2	
		18700	24	22.18	1	21.22	2	
	50L	19100	24	22.16	1	21.20	2	
		18900	24	22.04	1	21.09	2	
		18700	24	22.19	1	21.20	2	
	100	19100	24	22.11	1	21.18	2	
		18900	24	22.06	1	21.04	2	
		18700	24	22.10	1	21.19	2	

Table 11-5 LTE1900-FDD2 #2 AP ON

LTE1900-FDD2 #2									
SN	BandWidth	RB No./Start	Channel	Tune-up	Measured Power (dBm) & MPR				
					QPSK		16QAM		
					Measured Power	MPR	Measured Power	MPR	
1.4MHz	1H		19193	20.5	19.71	0	19.83	0	
			18900	20.5	19.79	0	19.95	0	
			18607	20.5	19.88	0	19.99	0	
	1M		19193	20.5	19.94	0	20.04	0	
			18900	20.5	19.95	0	20.10	0	
			18607	20.5	20.00	0	20.38	0	
	1L		19193	20.5	19.74	0	19.85	0	
			18900	20.5	19.80	0	19.93	0	
			18607	20.5	19.89	0	20.22	0	
	3H		19193	20.5	19.89	0	20.10	0	
			18900	20.5	19.84	0	19.96	0	
			18607	20.5	19.88	0	20.22	0	
	3M		19193	20.5	19.91	0	20.15	0	
			18900	20.5	19.87	0	19.93	0	
			18607	20.5	19.95	0	20.21	0	
	3L		19193	20.5	19.84	0	20.08	0	
			18900	20.5	19.81	0	19.99	0	
			18607	20.5	19.90	0	20.23	0	
	6		19193	20.5	19.84	0	20.04	0	
			18900	20.5	19.84	0	19.98	0	
			18607	20.5	19.88	0	19.85	0	
	3MHz	1H		19185	20.5	19.79	0	19.84	0
				18900	20.5	19.84	0	19.79	0
				18615	20.5	19.96	0	20.31	0
		1M		19185	20.5	19.92	0	20.05	0
				18900	20.5	19.92	0	19.91	0
				18615	20.5	20.07	0	20.41	0
1L			19185	20.5	19.88	0	19.99	0	
			18900	20.5	19.82	0	19.84	0	
			18615	20.5	19.99	0	20.33	0	
8H			19185	20.5	19.81	0	19.87	0	
			18900	20.5	19.82	0	19.95	0	
			18615	20.5	19.82	0	19.96	0	
8M			19185	20.5	19.85	0	19.94	0	
			18900	20.5	19.87	0	20.00	0	
			18615	20.5	19.92	0	20.06	0	
8L			19185	20.5	19.83	0	19.94	0	
			18900	20.5	19.84	0	19.98	0	
			18615	20.5	19.91	0	20.05	0	
15			19185	20.5	19.83	0	19.83	0	
			18900	20.5	19.86	0	19.91	0	
			18615	20.5	19.89	0	19.95	0	
5MHz		1H		19175	20.5	19.77	0	19.89	0
				18900	20.5	19.86	0	19.99	0
				18625	20.5	19.82	0	19.98	0
		1M		19175	20.5	20.06	0	20.10	0
				18900	20.5	20.04	0	20.21	0
				18625	20.5	20.00	0	20.05	0
	1L		19175	20.5	19.85	0	19.92	0	
			18900	20.5	19.85	0	19.97	0	
			18625	20.5	19.82	0	19.97	0	
	12H		19175	20.5	19.76	0	19.86	0	
			18900	20.5	19.82	0	19.99	0	
			18625	20.5	19.85	0	20.03	0	
	12M		19175	20.5	19.81	0	19.97	0	
			18900	20.5	19.85	0	19.98	0	
			18625	20.5	19.90	0	20.10	0	
	12L		19175	20.5	19.86	0	20.00	0	
			18900	20.5	19.77	0	19.91	0	
			18625	20.5	19.92	0	20.09	0	
	25		19175	20.5	19.86	0	19.81	0	
			18900	20.5	19.88	0	19.92	0	
			18625	20.5	19.90	0	19.96	0	

10MHz	1H	19150	20.5	19.72	0	19.80	0	
		18900	20.5	19.76	0	19.77	0	
		18650	20.5	19.85	0	20.20	0	
	1M	19150	20.5	19.96	0	20.01	0	
		18900	20.5	19.95	0	19.93	0	
		18650	20.5	20.00	0	20.42	0	
	1L	19150	20.5	19.74	0	19.83	0	
		18900	20.5	19.76	0	19.78	0	
		18650	20.5	19.93	0	20.25	0	
	25H	19150	20.5	19.79	0	19.90	0	
		18900	20.5	19.87	0	19.94	0	
		18650	20.5	19.87	0	19.94	0	
	25M	19150	20.5	19.90	0	20.00	0	
		18900	20.5	19.89	0	19.94	0	
		18650	20.5	19.90	0	20.00	0	
	25L	19150	20.5	19.87	0	20.00	0	
		18900	20.5	19.84	0	19.89	0	
		18650	20.5	20.06	0	20.06	0	
	50	19150	20.5	19.85	0	19.93	0	
		18900	20.5	19.91	0	19.90	0	
		18650	20.5	19.94	0	19.98	0	
	15MHz	1H	19125	20.5	19.67	0	19.96	0
			18900	20.5	19.63	0	19.68	0
			18675	20.5	19.75	0	19.97	0
		1M	19125	20.5	19.83	0	19.94	0
			18900	20.5	19.81	0	19.79	0
			18675	20.5	19.93	0	19.95	0
1L		19125	20.5	19.79	0	19.98	0	
		18900	20.5	19.78	0	19.80	0	
		18675	20.5	19.84	0	19.97	0	
36H		19125	20.5	19.74	0	19.80	0	
		18900	20.5	19.84	0	19.86	0	
		18675	20.5	19.83	0	19.96	0	
36M		19125	20.5	19.86	0	19.85	0	
		18900	20.5	19.89	0	19.90	0	
		18675	20.5	19.89	0	19.99	0	
36L		19125	20.5	19.82	0	19.81	0	
		18900	20.5	19.78	0	19.80	0	
		18675	20.5	19.96	0	19.82	0	
75		19125	20.5	19.83	0	19.83	0	
		18900	20.5	19.85	0	19.83	0	
		18675	20.5	19.91	0	19.95	0	
20MHz		1H	19100	20.5	19.62	0	19.92	0
			18900	20.5	19.66	0	19.93	0
			18700	20.5	19.68	0	19.95	0
		1M	19100	20.5	19.97	0	19.94	0
			18900	20.5	19.97	0	19.95	0
			18700	20.5	20.01	0	19.98	0
	1L	19100	20.5	19.69	0	19.99	0	
		18900	20.5	19.71	0	19.99	0	
		18700	20.5	19.79	0	19.97	0	
	50H	19100	20.5	19.79	0	19.89	0	
		18900	20.5	19.74	0	19.79	0	
		18700	20.5	19.88	0	19.97	0	
	50M	19100	20.5	19.82	0	19.92	0	
		18900	20.5	19.94	0	19.94	0	
		18700	20.5	19.98	0	20.07	0	
	50L	19100	20.5	19.94	0	20.05	0	
		18900	20.5	19.77	0	19.79	0	
		18700	20.5	19.99	0	20.11	0	
	100	19100	20.5	19.80	0	19.89	0	
		18900	20.5	19.77	0	19.85	0	
		18700	20.5	19.97	0	20.06	0	

Table 11-6 LTE850-FDD5 #1

LTE850-FDD5 #1								
BandWidth	RB No./Start	Channel	Tune-up	Measured Power (dBm) & MPR				
				QPSK		16QAM		
				Measured Power	MPR	Measured Power	MPR	
1.4MHz	1H	20643	23.5	22.80	0	21.96	1	
		20525	23.5	22.88	0	21.84	1	
		20407	23.5	22.85	0	21.90	1	
	1M	20643	23.5	23.09	0	22.21	1	
		20525	23.5	23.12	0	22.07	1	
		20407	23.5	23.02	0	22.12	1	
	1L	20643	23.5	22.84	0	21.98	1	
		20525	23.5	22.90	0	21.88	1	
		20407	23.5	22.86	0	21.90	1	
	3H	20643	23.5	22.95	0	21.98	1	
		20525	23.5	22.93	0	22.12	1	
		20407	23.5	22.87	0	21.92	1	
	3M	20643	23.5	23.02	0	22.03	1	
		20525	23.5	22.97	0	22.17	1	
		20407	23.5	22.96	0	21.97	1	
	3L	20643	23.5	22.96	0	21.99	1	
		20525	23.5	22.97	0	22.09	1	
		20407	23.5	22.89	0	21.94	1	
	6	20643	23.5	21.98	1	21.01	2	
		20525	23.5	21.94	1	21.12	2	
		20407	23.5	21.91	1	20.90	2	
	3MHz	1H	20635	23.5	22.80	0	21.82	1
			20525	23.5	22.88	0	21.70	1
			20415	23.5	22.84	0	22.14	1
		1M	20635	23.5	22.99	0	22.01	1
			20525	23.5	22.93	0	21.85	1
			20415	23.5	22.95	0	22.33	1
1L		20635	23.5	22.92	0	21.94	1	
		20525	23.5	22.79	0	21.77	1	
		20415	23.5	22.83	0	22.10	1	
8H		20635	23.5	21.85	1	20.83	2	
		20525	23.5	21.84	1	20.91	2	
		20415	23.5	21.73	1	20.81	2	
8M		20635	23.5	21.90	1	20.90	2	
		20525	23.5	21.89	1	20.99	2	
		20415	23.5	21.79	1	20.86	2	
8L		20635	23.5	21.90	1	20.90	2	
		20525	23.5	21.81	1	20.91	2	
		20415	23.5	21.77	1	20.86	2	
15		20635	23.5	21.84	1	20.77	2	
		20525	23.5	21.83	1	20.85	2	
		20415	23.5	21.74	1	20.72	2	
5MHz		1H	20625	23.5	22.78	0	21.84	1
			20525	23.5	22.82	0	21.84	1
			20425	23.5	22.74	0	22.19	1
		1M	20625	23.5	23.05	0	22.09	1
			20525	23.5	23.05	0	22.12	1
			20425	23.5	22.93	0	22.40	1
	1L	20625	23.5	22.84	0	21.90	1	
		20525	23.5	22.83	0	21.91	1	
		20425	23.5	22.69	0	22.16	1	
	12H	20625	23.5	21.75	1	20.84	2	
		20525	23.5	21.81	1	20.91	2	
		20425	23.5	21.70	1	20.84	2	
	12M	20625	23.5	21.89	1	20.93	2	
		20525	23.5	21.84	1	20.96	2	
		20425	23.5	21.74	1	20.90	2	
	12L	20625	23.5	21.81	1	20.89	2	
		20525	23.5	21.81	1	20.87	2	
		20425	23.5	21.69	1	20.87	2	
	25	20625	23.5	21.83	1	20.80	2	
		20525	23.5	21.85	1	20.84	2	
		20425	23.5	21.72	1	20.77	2	



10MHz	1H	20600	23.5	22.82	0	22.11	1
		20525	23.5	22.78	0	21.79	1
		20450	23.5	22.73	0	21.68	1
	1M	20600	23.5	23.03	0	22.24	1
		20525	23.5	22.89	0	21.92	1
		20450	23.5	22.91	0	21.80	1
	1L	20600	23.5	22.86	0	22.14	1
		20525	23.5	22.79	0	21.82	1
		20450	23.5	22.74	0	21.65	1
	25H	20600	23.5	21.84	1	20.85	2
		20525	23.5	21.84	1	20.91	2
		20450	23.5	21.80	1	20.83	2
	25M	20600	23.5	21.92	1	20.92	2
		20525	23.5	21.87	1	20.93	2
		20450	23.5	21.86	1	20.87	2
	25L	20600	23.5	21.89	1	20.91	2
		20525	23.5	21.87	1	20.96	2
		20450	23.5	21.79	1	20.80	2
	50	20600	23.5	21.85	1	20.87	2
		20525	23.5	21.88	1	20.92	2
		20450	23.5	21.80	1	20.81	2



Table 11-7 LTE2500-FDD7 #1

LTE2500-FDD7 #1								
BandWidth	RB No./Start	Channel	Tune-up	Measured Power (dBm) & MPR				
				QPSK		16QAM		
				Measured Power	MPR	Measured Power	MPR	
5MHz	1H	21425	24.5	23.69	0	22.70	1	
		21100	24.5	23.78	0	22.81	1	
		20775	24.5	23.65	0	23.08	1	
	1M	21425	24.5	23.95	0	22.96	1	
		21100	24.5	24.09	0	23.12	1	
		20775	24.5	23.93	0	23.36	1	
	1L	21425	24.5	23.73	0	22.76	1	
		21100	24.5	23.80	0	22.89	1	
		20775	24.5	23.72	0	23.15	1	
	12H	21425	24.5	22.73	1	21.74	2	
		21100	24.5	22.81	1	21.86	2	
		20775	24.5	22.75	1	21.85	2	
	12M	21425	24.5	22.83	1	21.87	2	
		21100	24.5	22.89	1	21.94	2	
		20775	24.5	22.78	1	21.92	2	
	12L	21425	24.5	22.77	1	21.82	2	
		21100	24.5	22.79	1	21.87	2	
		20775	24.5	22.73	1	21.86	2	
	25	21425	24.5	22.78	1	21.69	2	
		21100	24.5	22.85	1	21.83	2	
		20775	24.5	22.75	1	21.77	2	
	10MHz	1H	21400	24.5	23.71	0	22.61	1
			21100	24.5	23.75	0	22.67	1
			20800	24.5	23.72	0	22.95	1
		1M	21400	24.5	23.85	0	22.80	1
			21100	24.5	23.93	0	22.85	1
			20800	24.5	23.90	0	23.09	1
1L		21400	24.5	23.77	0	22.75	1	
		21100	24.5	23.77	0	22.66	1	
		20800	24.5	23.81	0	23.09	1	
25H		21400	24.5	22.78	1	21.83	2	
		21100	24.5	22.97	1	21.93	2	
		20800	24.5	22.75	1	21.77	2	
25M		21400	24.5	22.85	1	21.93	2	
		21100	24.5	22.88	1	21.87	2	
		20800	24.5	22.80	1	21.79	2	
25L		21400	24.5	22.84	1	21.87	2	
		21100	24.5	22.90	1	21.85	2	
		20800	24.5	22.78	1	21.79	2	
50		21400	24.5	22.82	1	21.81	2	
		21100	24.5	22.91	1	21.84	2	
		20800	24.5	22.79	1	21.75	2	
15MHz		1H	21375	24.5	23.70	0	22.84	1
			21100	24.5	23.65	0	22.53	1
			20825	24.5	23.58	0	22.82	1
		1M	21375	24.5	23.83	0	23.07	1
			21100	24.5	23.83	0	22.73	1
			20825	24.5	23.76	0	23.02	1
	1L	21375	24.5	23.85	0	23.07	1	
		21100	24.5	23.73	0	22.60	1	
		20825	24.5	23.83	0	23.05	1	
	36H	21375	24.5	22.87	1	21.80	2	
		21100	24.5	22.88	1	21.87	2	
		20825	24.5	22.76	1	21.77	2	
	36M	21375	24.5	22.90	1	21.82	2	
		21100	24.5	22.89	1	21.88	2	
		20825	24.5	22.84	1	21.79	2	
	36L	21375	24.5	22.94	1	21.90	2	
		21100	24.5	22.91	1	21.85	2	
		20825	24.5	22.86	1	21.82	2	
	75	21375	24.5	22.91	1	21.84	2	
		21100	24.5	22.95	1	21.85	2	
		20825	24.5	22.82	1	21.76	2	



20MHz	1H	21350	24.5	23.57	0	22.99	1
		21100	24.5	23.61	0	23.01	1
		20850	24.5	23.48	0	22.77	1
	1M	21350	24.5	23.90	0	23.32	1
		21100	24.5	23.94	0	23.33	1
		20850	24.5	23.86	0	23.08	1
	1L	21350	24.5	23.75	0	23.23	1
		21100	24.5	23.63	0	23.03	1
		20850	24.5	23.67	0	22.97	1
	50H	21350	24.5	22.75	1	21.75	2
		21100	24.5	22.83	1	21.83	2
		20850	24.5	22.58	1	21.49	2
	50M	21350	24.5	22.80	1	21.79	2
		21100	24.5	22.86	1	21.81	2
		20850	24.5	22.68	1	21.61	2
	50L	21350	24.5	22.87	1	21.88	2
		21100	24.5	22.78	1	21.75	2
		20850	24.5	22.69	1	21.67	2
	100	21350	24.5	22.83	1	21.82	2
		21100	24.5	22.84	1	21.80	2
		20850	24.5	22.67	1	21.62	2