



SAR TEST REPORT

No. I17Z61985-SEM01

For

TCL Communication Ltd.

A3A XL 4G

Model name: 5099A

With

Hardware Version: 03

Software Version: vJ1R

FCC ID: 2ACCJBT08

Issued Date: 2017-12-13



Note:

The test results in this test report relate only to the devices specified in this report. This report shall not be reproduced except in full without the written approval of CTTL.

The report must not be used by the client to claim product certification, approval, or endorsement by NVLAP, NIST, or any agency of the U.S. Government.

Test Laboratory:

CTTL, Telecommunication Technology Labs, CAICT

No. 51, Xueyuan Road, Haidian District, Beijing, P. R. China 100191.

Tel:+86(0)10-62304633-2512, Fax:+86(0)10-62304633-2504

Email: ctl_terminals@caict.ac.cn, website: www.caict.ac.cn



REPORT HISTORY

Report Number	Revision	Issue Date	Description
I17Z61985-SEM01	Rev.0	2017-12-13	Initial creation of test report
I17Z61985-SEM01	Rev.1	2017-12-21	Update tune up of BT/WLAN in section 11.4

TABLE OF CONTENT

1 TEST LABORATORY	5
1.1 TESTING LOCATION	5
1.2 TESTING ENVIRONMENT.....	5
1.3 PROJECT DATA	5
1.4 SIGNATURE.....	5
2 STATEMENT OF COMPLIANCE	6
3 CLIENT INFORMATION	8
3.1 APPLICANT INFORMATION	8
3.2 MANUFACTURER INFORMATION	8
4 EQUIPMENT UNDER TEST (EUT) AND ANCILLARY EQUIPMENT (AE).....	9
4.1 ABOUT EUT	9
4.2 INTERNAL IDENTIFICATION OF EUT USED DURING THE TEST	9
4.3 INTERNAL IDENTIFICATION OF AE USED DURING THE TEST	9
5 TEST METHODOLOGY	10
5.1 APPLICABLE LIMIT REGULATIONS	10
5.2 APPLICABLE MEASUREMENT STANDARDS.....	10
6 SPECIFIC ABSORPTION RATE (SAR).....	11
6.1 INTRODUCTION.....	11
6.2 SAR DEFINITION.....	11
7 TISSUE SIMULATING LIQUIDS	12
7.1 TARGETS FOR TISSUE SIMULATING LIQUID	12
7.2 DIELECTRIC PERFORMANCE	12
8 SYSTEM VERIFICATION	20
8.1 SYSTEM SETUP.....	20
8.2 SYSTEM VERIFICATION.....	21
9 MEASUREMENT PROCEDURES	22
9.1 TESTS TO BE PERFORMED	22
9.2 GENERAL MEASUREMENT PROCEDURE.....	24
9.3 WCDMA MEASUREMENT PROCEDURES FOR SAR	25
9.4 SAR MEASUREMENT FOR LTE.....	26
9.5 BLUETOOTH & WI-FI MEASUREMENT PROCEDURES FOR SAR	26
9.6 POWER DRIFT.....	27
10 AREA SCAN BASED 1-G SAR.....	27
10.1 REQUIREMENT OF KDB.....	27
10.2 FAST SAR ALGORITHMS	27
11 CONDUCTED OUTPUT POWER.....	28

11.1 GSM MEASUREMENT RESULT	28
11.2 WCDMA MEASUREMENT RESULT.....	29
11.3 LTE MEASUREMENT RESULT	31
11.4 WI-FI AND BT MEASUREMENT RESULT	47
12 SIMULTANEOUS TX SAR CONSIDERATIONS.....	48
12.1 INTRODUCTION.....	48
12.2 TRANSMIT ANTENNA SEPARATION DISTANCES	48
12.3 SAR MEASUREMENT POSITIONS	49
12.4 STANDALONE SAR TEST EXCLUSION CONSIDERATIONS	49
13 EVALUATION OF SIMULTANEOUS.....	50
14 SAR TEST RESULT	51
14.1 THE EVALUATION OF MULTI-BATTERIES	51
14.2 SAR RESULTS FOR FAST SAR.....	52
14.3 SAR RESULTS FOR STANDARD PROCEDURE.....	63
14.4 WLAN EVALUATION FOR 2.4G	68
14.5 WLAN EVALUATION FOR 5G.....	71
15 SAR MEASUREMENT VARIABILITY.....	74
16 MEASUREMENT UNCERTAINTY	75
16.1 MEASUREMENT UNCERTAINTY FOR NORMAL SAR TESTS (300MHZ~3GHZ)	75
16.2 MEASUREMENT UNCERTAINTY FOR NORMAL SAR TESTS (3~6GHZ)	76
16.3 MEASUREMENT UNCERTAINTY FOR FAST SAR TESTS (300MHZ~3GHZ)	77
16.4 MEASUREMENT UNCERTAINTY FOR FAST SAR TESTS (3~6GHZ).....	78
17 MAIN TEST INSTRUMENTS.....	79
ANNEX A GRAPH RESULTS.....	80
ANNEX B SYSTEM VERIFICATION RESULTS	118
ANNEX C SAR MEASUREMENT SETUP	133
ANNEX D POSITION OF THE WIRELESS DEVICE IN RELATION TO THE PHANTOM	139
ANNEX E EQUIVALENT MEDIA RECIPES.....	142
ANNEX F SYSTEM VALIDATION	143
ANNEX G PROBE CALIBRATION CERTIFICATE.....	144
ANNEX H DIPOLE CALIBRATION CERTIFICATE	155
ANNEX I DAE CALIBRATION CERTIFICATE.....	218
ANNEX J ACCREDITATION CERTIFICATE.....	221

1 Test Laboratory

1.1 Testing Location

Company Name:	CTTL(Shouxiang)
Address:	No. 51 Shouxiang Science Building, Xueyuan Road, Haidian District, Beijing, P. R. China100191

1.2 Testing Environment

Temperature:	18°C~25°C,
Relative humidity:	30%~ 70%
Ground system resistance:	< 0.5 Ω
Ambient noise & Reflection:	< 0.012 W/kg

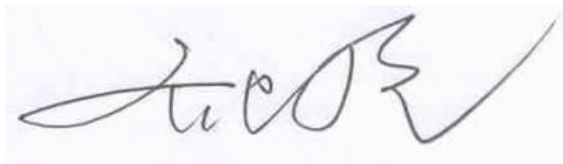
1.3 Project Data

Project Leader:	Qi Dianyuan
Test Engineer:	Lin Xiaojun
Testing Start Date:	November 29, 2017
Testing End Date:	December 3, 2017

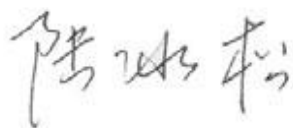
1.4 Signature



Lin Xiaojun
(Prepared this test report)



Qi Dianyuan
(Reviewed this test report)



Lu Bingsong
Deputy Director of the laboratory
(Approved this test report)

2 Statement of Compliance

The maximum results of SAR found during testing for TCL Communication Ltd. A3A XL 4G 5099A are as follows:

Table 2.1: Highest Reported SAR (1g)

Exposure Configuration	Technology Band	Highest Reported SAR 1g(W/kg)	Equipment Class	
Head (Separation Distance 0mm)	GSM 850	1.08	PCE	
	PCS 1900	0.18		
	UMTS FDD 5	0.98		
	UMTS FDD 4	0.30		
	UMTS FDD 2	0.32		
	LTE Band 2	0.24		
	LTE Band 4	0.23		
	LTE Band 5	0.68		
	LTE Band 7	0.06		
	LTE Band 12	0.60		
	LTE Band 13	0.34		
	WLAN 2.4 GHz	0.46		DTS
	WLAN 5 GHz	0.57		UNII
	Hotspot (Separation Distance 10mm)	GSM 850	0.47	PCE
PCS 1900		1.37		
UMTS FDD 5		0.28		
UMTS FDD 4		1.09		
UMTS FDD 2		0.65		
LTE Band 2		0.56		
LTE Band 4		0.87		
LTE Band 5		0.21		
LTE Band 7		0.69		
LTE Band 12		0.11		
LTE Band 13		0.08		
WLAN 2.4 GHz		0.16	DTS	
WLAN 5 GHz		0.19	UNII	
Body-worn (Separation Distance 15mm)		UMTS FDD 2	0.55	PCE
	LTE Band 2	0.51		

The SAR values found for the Mobile Phone are below the maximum recommended levels of 1.6 W/Kg as averaged over any 1g tissue according to the ANSI C95.1-1992.

For body operation, this device has been tested and meets FCC RF exposure guidelines when used with any accessory that contains no metal and which provides a minimum separation distance of 10 mm for hotspot and 15mm for body worn between this device and the body of the user. Use of other accessories may not ensure compliance with FCC RF exposure guidelines.

The EUT battery must be fully charged and checked periodically during the test to ascertain uniform power output.

The measurement together with the test system set-up is described in annex C of this test report. A detailed description of the equipment under test can be found in chapter 4 of this test report. The highest reported SAR value is obtained at the case of **(Table 2.1)**, and the values are: **1.37 W/kg(1g)**.

Table 2.2: The sum of reported SAR values for main antenna and WiFi

	Position	Main antenna	WiFi	Sum
Highest reported SAR value for Head	Right hand, Touch cheek	1.08	0.44	1.52
	Right hand, Tilt 15°	0.72	0.57	1.29
Highest reported SAR value for Body	Rear	1.37	0.17	1.54
	Top	0.23	0.19	0.42

Note: we have evaluated and chose the highest value of WiFi 2.4G and 5G in the above table

Table 2.3: The sum of reported SAR values for main antenna and BT

	Position	Main antenna	BT	Sum
Maximum reported SAR value for Head	Right hand, Touch cheek	1.08	0.17 ^[1]	1.25
Maximum reported SAR value for Body	Rear	1.37	0.08 ^[1]	1.45

[1] - Estimated SAR for Bluetooth (see the table 13.3)

According to the above tables, the highest sum of reported SAR values is **1.54 W/kg (1g)**. The detail for simultaneous transmission consideration is described in chapter 13.

According to the KDB648474 D04, the UMPC mini-tablet procedures must also be applied to test the SAR of all surfaces and edges with an antenna located at ≤ 25 mm from that surface or edge, in direct contact with a flat phantom, for 10-g extremity SAR according to the body-equivalent tissue dielectric parameters in KDB Publication 865664 D01 to address interactive hand use exposure conditions. When hotspot mode applies, 10-g extremity SAR is required only for the surfaces and edges with hotspot mode 1-g reported SAR > 1.2 W/kg

Table 2.4: 0mm Reported SAR for phablet (10g)

Exposure Configuration	Technology Band	Highest Reported SAR 10g(W/kg)	Limit 10g (W/kg)
Hotspot (Separation Distance 0mm)	PCS 1900	3.25	4.0



3 Client Information

3.1 Applicant Information

Company Name:	TCL Communication Ltd.
Address/Post:	5F, C building, No. 232, Liang Jing Road ZhangJiang High-Tech Park, Pudong Area Shanghai, P.R. China. 201203
City:	Shanghai
Country:	China
Contact Person:	Juan.Ma
E-mail:	juan.ma@tcl.com
Telephone:	0755-33038372
Fax:	/

3.2 Manufacturer Information

Company Name:	TCL Communication Ltd.
Address/Post:	5F, C building, No. 232, Liang Jing Road ZhangJiang High-Tech Park, Pudong Area Shanghai, P.R. China. 201203
City:	Shanghai
Country:	China
Contact Person:	Juan.Ma
E-mail:	juan.ma@tcl.com
Telephone:	0755-33038372
Fax:	/

4 Equipment Under Test (EUT) and Ancillary Equipment (AE)

4.1 About EUT

Description:	A3A XL 4G
Model name:	5099A
Operating mode(s):	GSM 850/900/1800/1900, UMTS FDD 1/2/4/5/8, BT, Wi-Fi LTE Band 1/2/3/4/5/7/8/12/13/17/28
Tested Tx Frequency:	825 – 848.8 MHz (GSM 850)
	1850.2 – 1910 MHz (GSM 1900)
	826.4–846.6 MHz (WCDMA 850 Band V)
	1712.4 – 1752.6 MHz (WCDMA 1700 Band IV)
	1852.4–1907.6 MHz (WCDMA1900 Band II)
	1860 – 1900 MHz (LTE Band 2)
	1720 – 1745 MHz (LTE Band 4)
	824.7 – 848.3 MHz (LTE Band 5)
	2502.5 – 2567.5 MHz (LTE Band 7)
	699.7 – 715.3 MHz (LTE Band 12)
	779.5 –784.5 MHz (LTE Band 13)
2412 – 2462 MHz (Wi-Fi 2.4G)	
5150-5350 MHz (Wi-Fi 5G)	
GPRS/EGPRS Multislot Class:	12
GPRS capability Class:	B
Test device Production information:	Production unit
Device type:	Portable device
Antenna type:	Integrated antenna
Accessories/Body-worn configurations:	Headset
Hotspot mode:	Support
Product Dimension:	L: 162mm W: 76mm overall diagonal: 178.9mm

4.2 Internal Identification of EUT used during the test

EUT ID*	IMEI	HW	SW Version
EUT1	015106000200178	03	vJ1R
EUT2	015106000200228	03	vJ1R
EUT3	015106000200194	03	vJ1R
EUT4	015106000200079	03	vJ1R
EUT5	015106000200152	03	vJ1R

*EUT ID: is used to identify the test sample in the lab internally.

Note: It is performed to test SAR with the EUT1&2&3&4 and conducted power with the EUT5.

4.3 Internal Identification of AE used during the test

AE ID*	Description	Model	SN	Manufacturer
AE1	Battery	TLp029C1	/	BYD
AE2	Battery	TLp029C7	/	VEKEN
AE3	Headset	CCB0046A10C4	/	MEIHAO
AE4	Headset	CCB0046A10C6	/	SHENGHUA

*AE ID: is used to identify the test sample in the lab internally.



5 TEST METHODOLOGY

5.1 Applicable Limit Regulations

ANSI C95.1–1992: IEEE Standard for Safety Levels with Respect to Human Exposure to Radio Frequency Electromagnetic Fields, 3 kHz to 300 GHz.

It specifies the maximum exposure limit of **1.6 W/kg** as averaged over any 1 gram of tissue for portable devices being used within 20 cm of the user in the uncontrolled environment.

5.2 Applicable Measurement Standards

IEEE 1528–2013: Recommended Practice for Determining the Peak Spatial-Average Specific Absorption Rate (SAR) in the Human Head from Wireless Communications Devices: Measurement Techniques.

KDB447498 D01: General RF Exposure Guidance v06: Mobile and Portable Devices RF Exposure Procedures and Equipment Authorization Policies.

KDB648474 D04 Handset SAR v01r03: SAR Evaluation Considerations for Wireless Handsets.

KDB941225 D01 SAR test for 3G devices v03r01: SAR Measurement Procedures for 3G Devices

KDB941225 D05 SAR for LTE Devices v02r05: SAR Evaluation Considerations for LTE Devices

KDB941225 D06 Hotspot Mode SAR v02r01: SAR Evaluation Procedures for Portable Devices with Wireless Router Capabilities

KDB248227 D01 802.11 Wi-Fi SAR v02r02: SAR GUIDANCE FOR IEEE 802.11 (Wi-Fi) TRANSMITTERS

KDB865664 D01 SAR measurement 100 MHz to 6 GHz v01r04: SAR Measurement Requirements for 100 MHz to 6 GHz.

KDB865664 D02 RF Exposure Reporting v01r02: RF Exposure Compliance Reporting and Documentation Considerations

6 Specific Absorption Rate (SAR)

6.1 Introduction

SAR is related to the rate at which energy is absorbed per unit mass in an object exposed to a radio field. The SAR distribution in a biological body is complicated and is usually carried out by experimental techniques or numerical modeling. The standard recommends limits for two tiers of groups, occupational/controlled and general population/uncontrolled, based on a person's awareness and ability to exercise control over his or her exposure. In general, occupational/controlled exposure limits are higher than the limits for general population/uncontrolled.

6.2 SAR Definition

The SAR definition is the time derivative (rate) of the incremental energy (dW) absorbed by (dissipated in) an incremental mass (dm) contained in a volume element (dv) of a given density (ρ). The equation description is as below:

$$SAR = \frac{d}{dt} \left(\frac{dW}{dm} \right) = \frac{d}{dt} \left(\frac{dW}{\rho dv} \right)$$

SAR is expressed in units of Watts per kilogram (W/kg)

SAR measurement can be either related to the temperature elevation in tissue by

$$SAR = c \left(\frac{\delta T}{\delta t} \right)$$

Where: C is the specific heat capacity, δT is the temperature rise and δt is the exposure duration, or related to the electrical field in the tissue by

$$SAR = \frac{\sigma |E|^2}{\rho}$$

Where: σ is the conductivity of the tissue, ρ is the mass density of tissue and E is the RMS electrical field strength.

However for evaluating SAR of low power transmitter, electrical field measurement is typically applied.

7 Tissue Simulating Liquids

7.1 Targets for tissue simulating liquid

Table 7.1: Targets for tissue simulating liquid

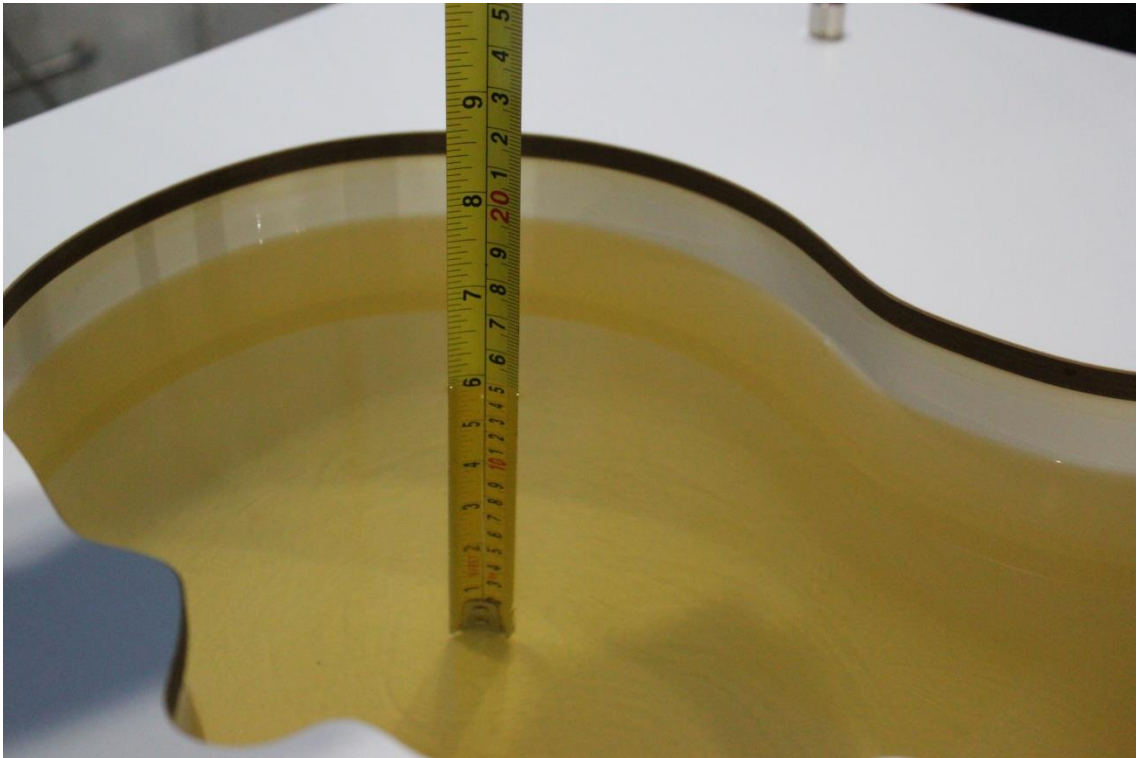
Frequency(MHz)	Liquid Type	Conductivity(σ)	$\pm 5\%$ Range	Permittivity(ϵ)	$\pm 5\%$ Range
750	Head	0.89	0.85~0.93	41.94	39.8~44.0
750	Body	0.96	0.91~1.01	55.5	52.7~58.3
835	Head	0.90	0.86~0.95	41.5	39.4~43.6
835	Body	0.97	0.92~1.02	55.2	52.4~58.0
1750	Head	1.37	1.30~1.44	40.08	38.1~42.1
1750	Body	1.49	1.42~1.56	53.4	50.7~56.1
1900	Head	1.40	1.33~1.47	40.0	38.0~42.0
1900	Body	1.52	1.44~1.60	53.3	50.6~56.0
2450	Head	1.80	1.71~1.89	39.2	37.2~41.2
2450	Body	1.95	1.85~2.05	52.7	50.1~55.3
2600	Head	1.96	1.86~2.06	39.01	37.1~41.0
2600	Body	2.16	2.05~2.27	52.5	49.9~55.1
5250	Head	4.71	4.47~4.95	35.93	34.13~37.73
5250	Body	5.36	5.09~5.63	48.9	46.46~51.34

7.2 Dielectric Performance

Table 7.2: Dielectric Performance of Tissue Simulating Liquid

Measurement Date (yyyy-mm-dd)	Type	Frequency	Permittivity ϵ	Drift (%)	Conductivity σ (S/m)	Drift (%)
2017-12-2	Head	750 MHz	42.57	1.50	0.896	0.67
	Body	750 MHz	55.31	-0.34	0.976	1.67
2017-11-29	Head	835 MHz	41.03	-1.13	0.894	-0.67
	Body	835 MHz	55.08	-0.22	0.981	1.13
2017-11-30	Head	1750 MHz	39.93	-0.37	1.358	-0.88
	Body	1750 MHz	54.07	1.25	1.502	0.81
2017-12-1	Head	1900 MHz	40.58	1.45	1.404	0.29
	Body	1900 MHz	52.39	-1.71	1.505	-0.99
2017-12-3	Head	2450 MHz	39.73	1.35	1.799	-0.06
	Body	2450 MHz	52.45	-0.47	1.971	1.08
2017-12-2	Head	2600 MHz	38.25	-1.95	1.935	-1.28
	Body	2600 MHz	51.77	-1.39	2.126	-1.57
2017-12-3	Head	5250 MHz	36.04	0.31	4.655	-1.17
	Body	5250 MHz	48.6	-0.61	5.331	-0.54

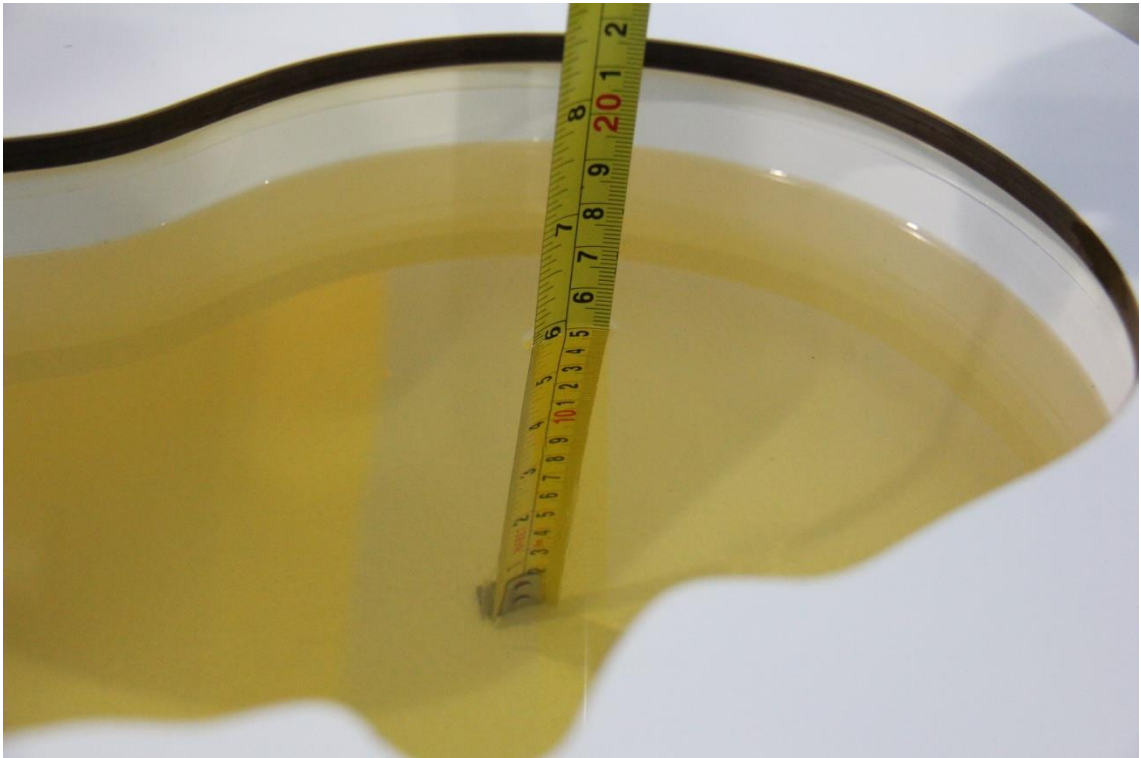
Note: The liquid temperature is 22.0°C



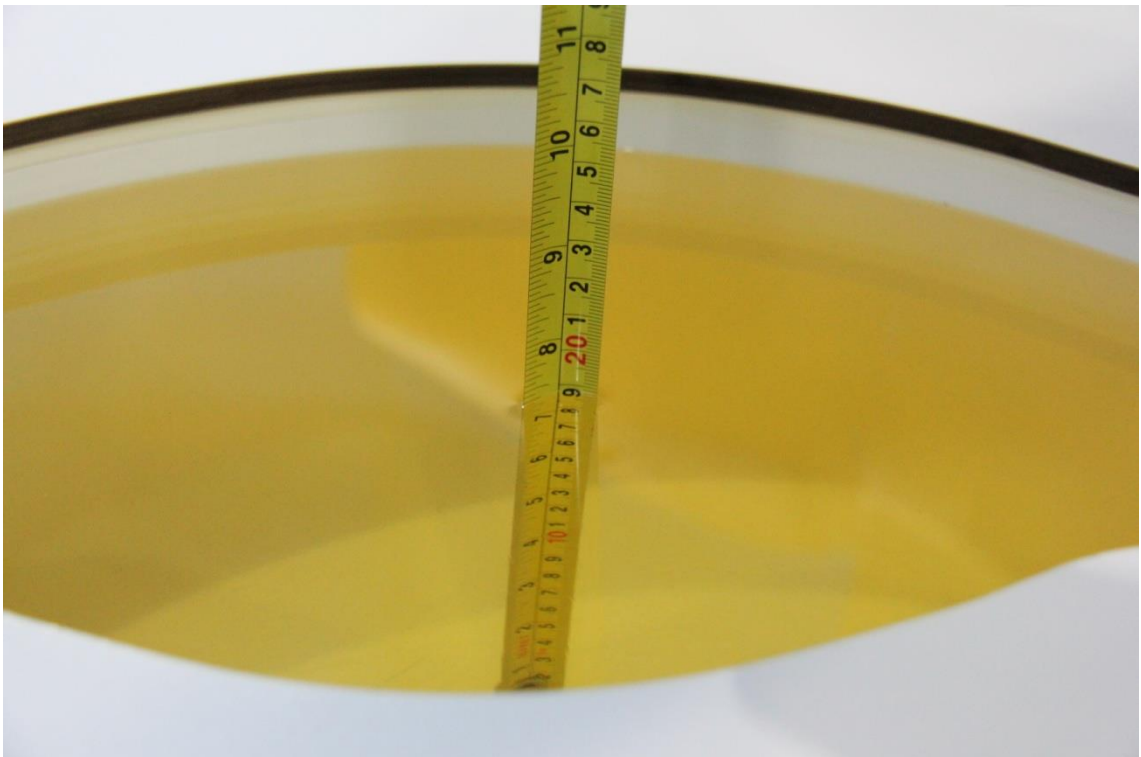
Picture 7-1 Liquid depth in the Head Phantom (750MHz)



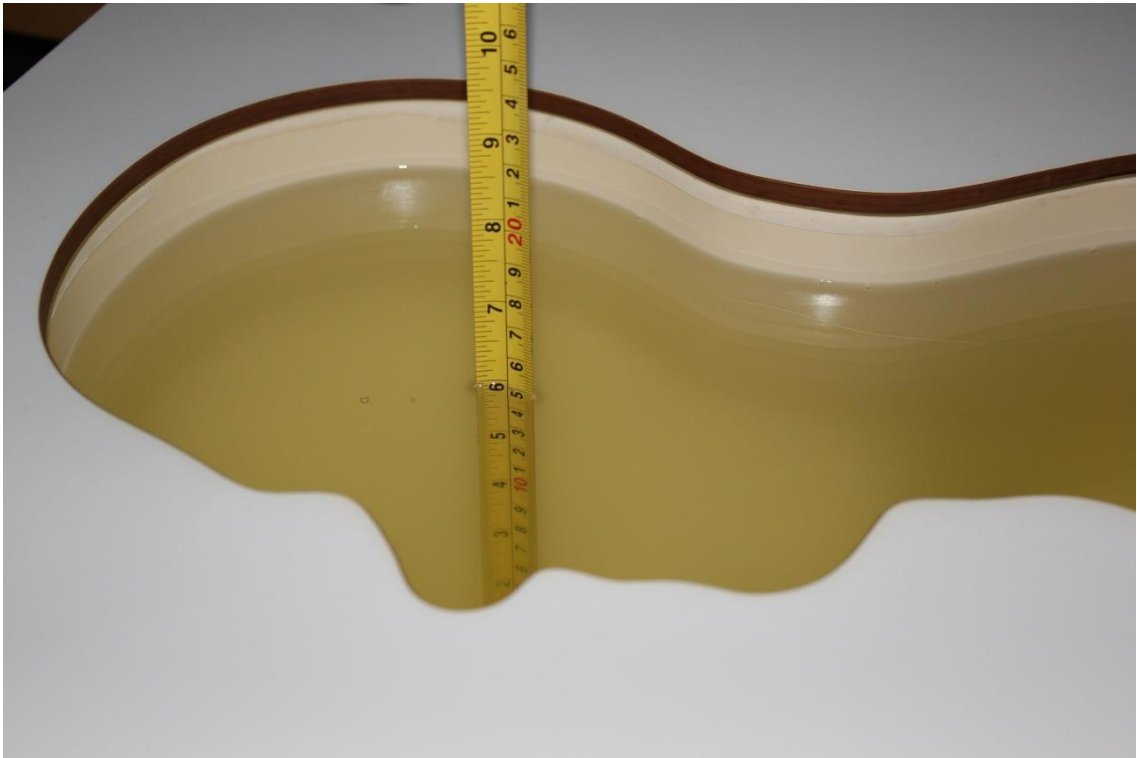
Picture 7-2 Liquid depth in the Flat Phantom (750MHz)



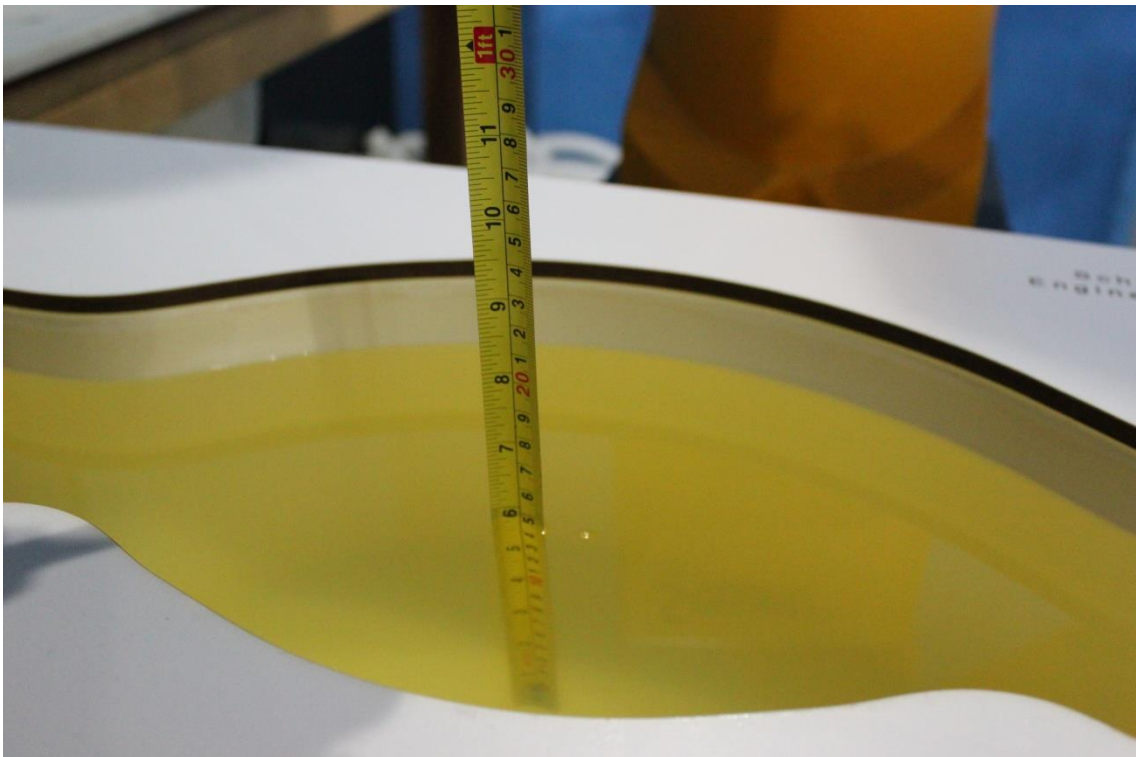
Picture 7-3 Liquid depth in the Head Phantom (835 MHz)



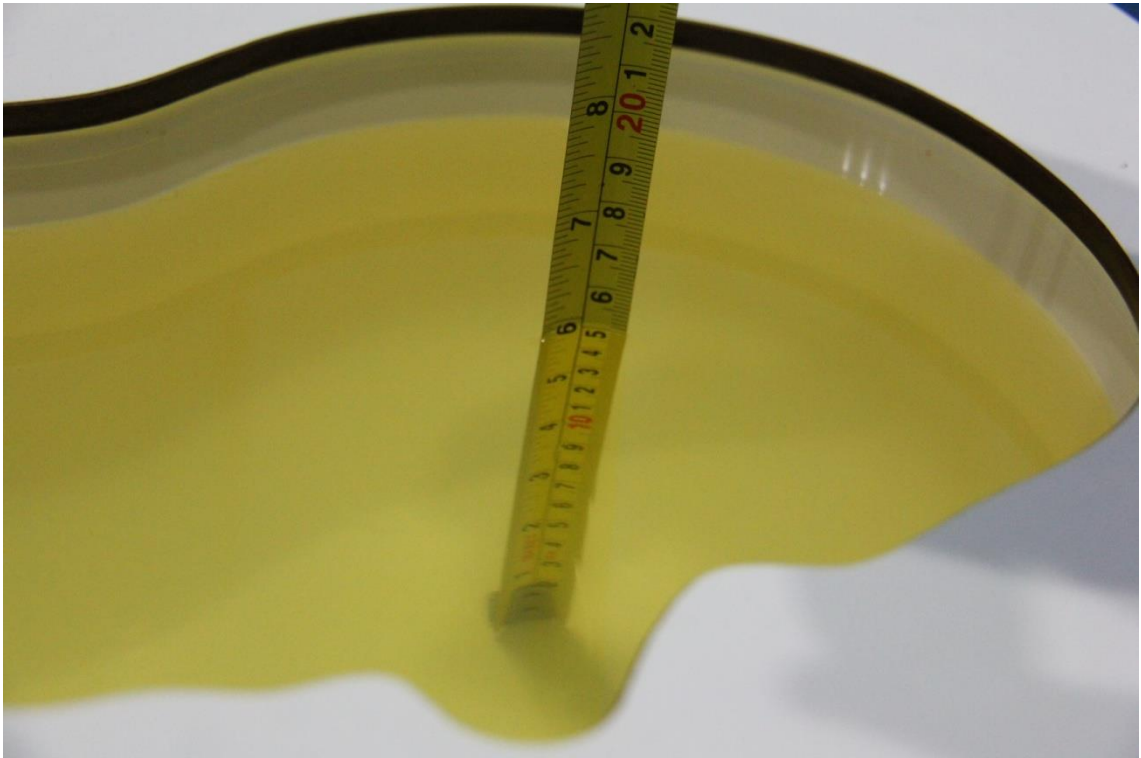
Picture 7-4 Liquid depth in the Flat Phantom (835 MHz)



Picture 7-5 Liquid depth in the Head Phantom (1750 MHz)



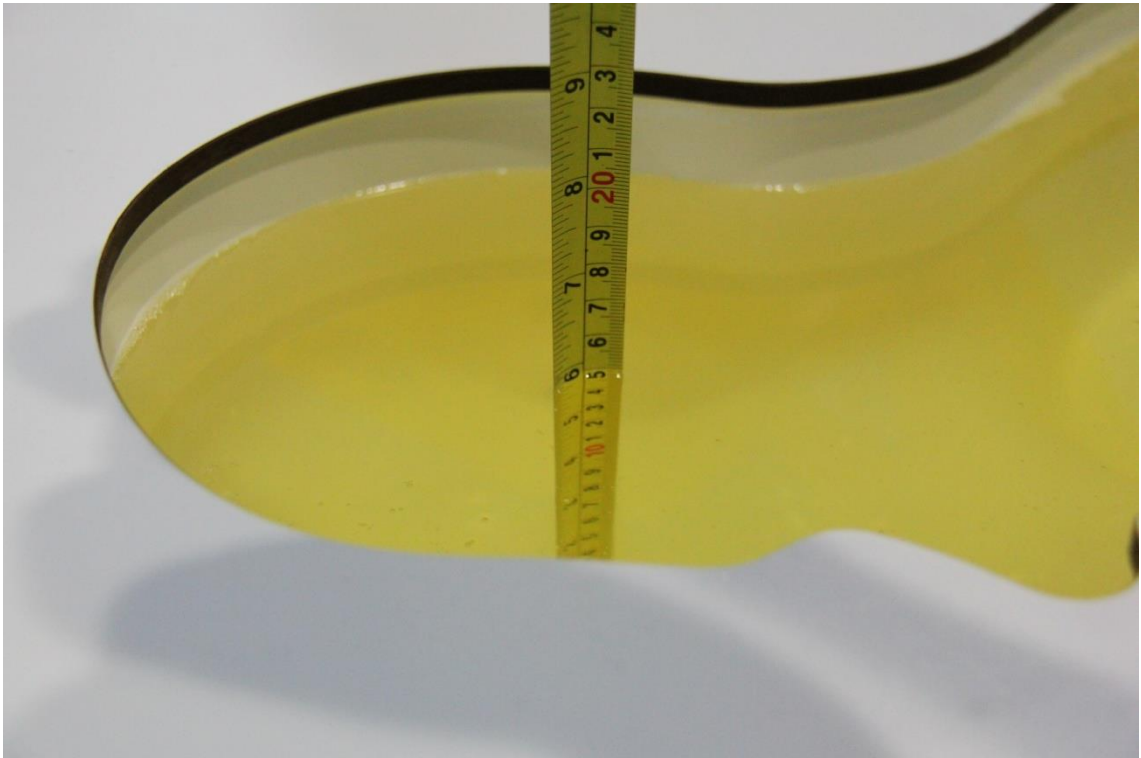
Picture 7-6 Liquid depth in the Flat Phantom (1750MHz)



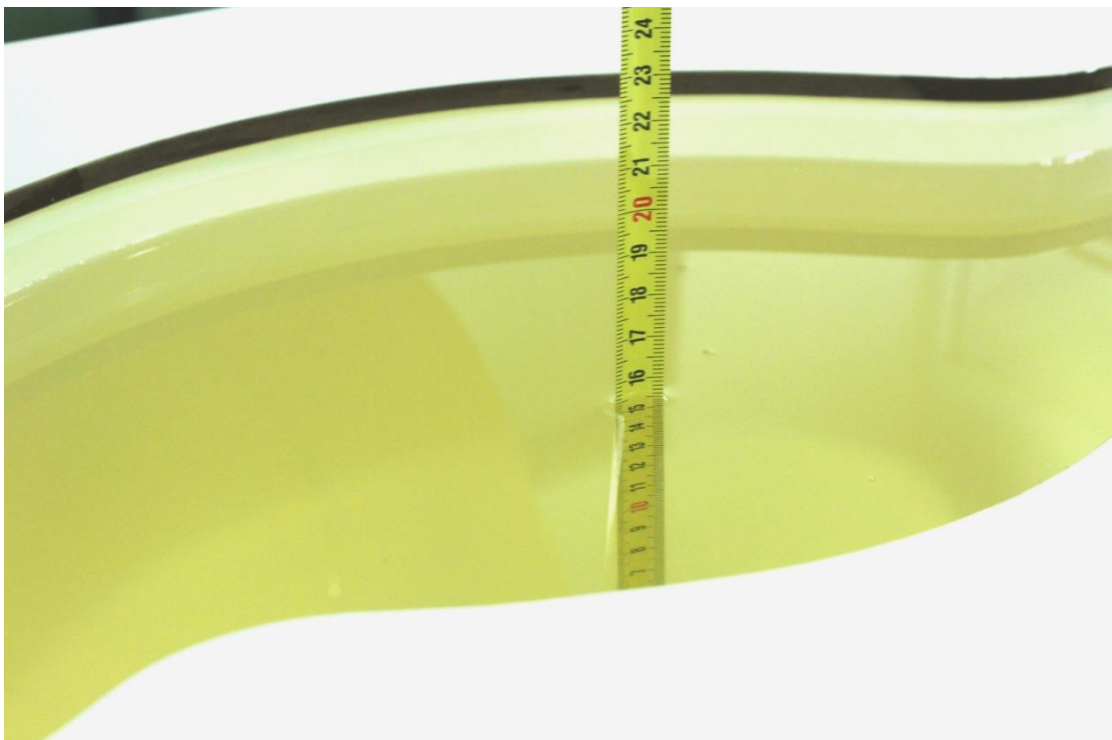
Picture 7-7 Liquid depth in the Head Phantom (1900 MHz)



Picture 7-8 Liquid depth in the Flat Phantom (1900MHz)



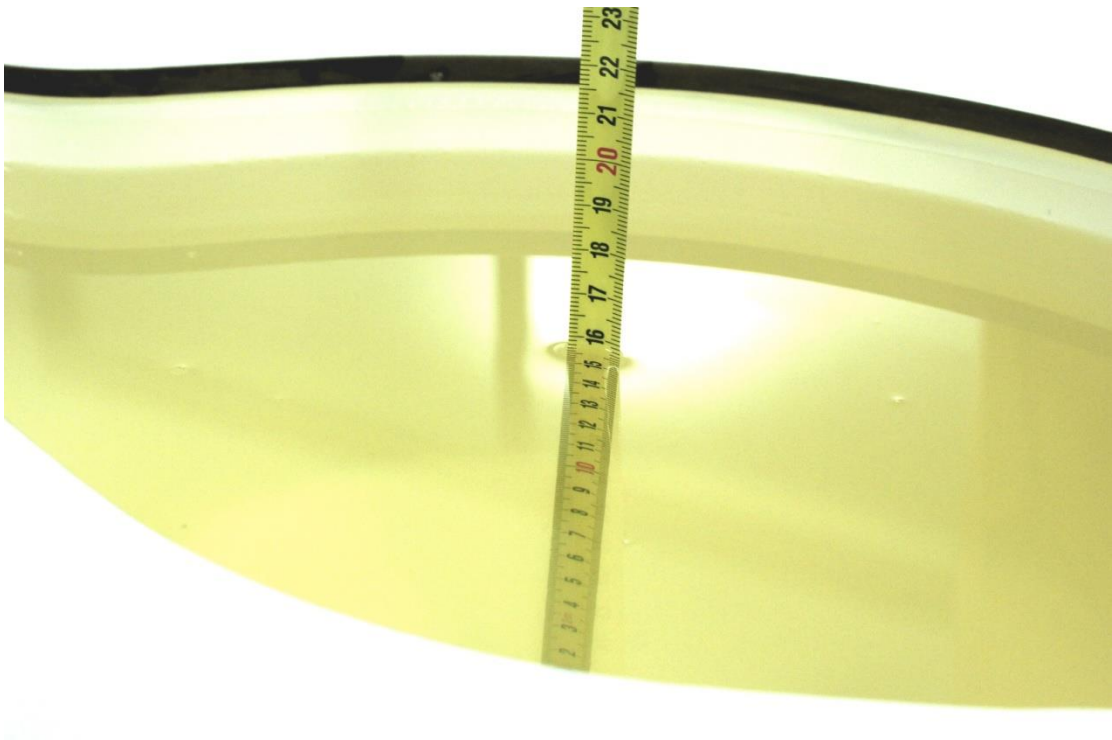
Picture 7-9 Liquid depth in the Head Phantom (2450MHz)



Picture 7-10 Liquid depth in the Flat Phantom (2450MHz)



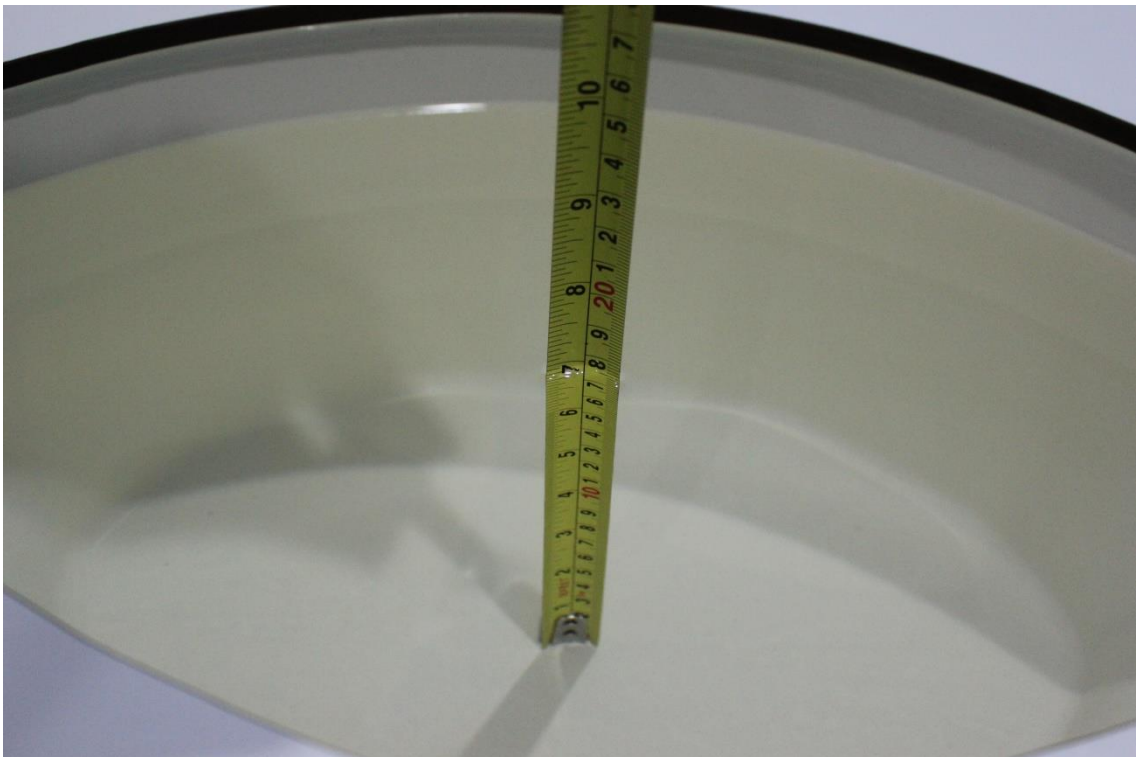
Picture 7-11 Liquid depth in the Head Phantom (2600 MHz Head)



Picture 7-12 Liquid depth in the Flat Phantom (2600MHz)



Picture 7-13 Liquid depth in the Head Phantom (5GHz)

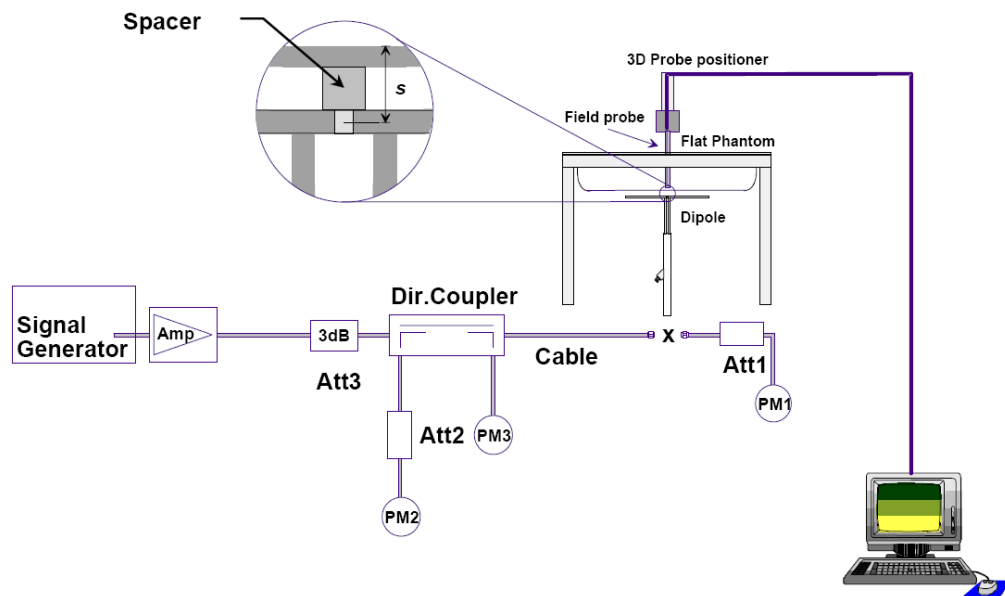


Picture 7-14 Liquid depth in the Flat Phantom (5GHz)

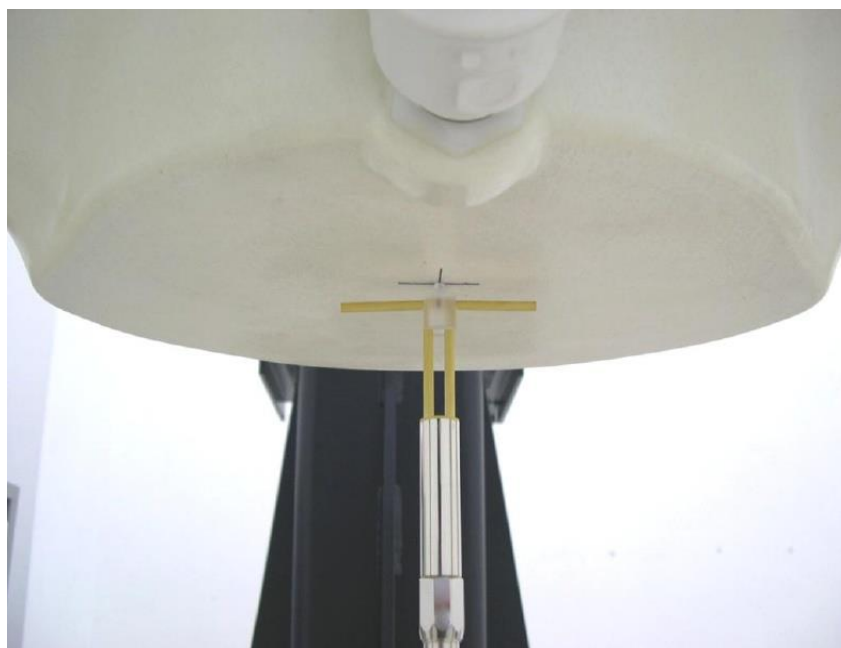
8 System verification

8.1 System Setup

In the simplified setup for system evaluation, the DUT is replaced by a calibrated dipole and the power source is replaced by a continuous wave that comes from a signal generator. The calibrated dipole must be placed beneath the flat phantom section of the SAM twin phantom with the correct distance holder. The distance holder should touch the phantom surface with a light pressure at the reference marking and be oriented parallel to the long side of the phantom. The equipment setup is shown below:



Picture 8.1 System Setup for System Evaluation



Picture 8.2 Photo of Dipole Setup

8.2 System Verification

SAR system verification is required to confirm measurement accuracy, according to the tissue dielectric media, probe calibration points and other system operating parameters required for measuring the SAR of a test device. The system verification must be performed for each frequency band and within the valid range of each probe calibration point required for testing the device.

The system verification results are required that the area scan estimated 1-g SAR is within 3% of the zoom scan 1-g SAR. The details are presented in annex B.

Table 8.1: System Verification of Head

Measurement Date (yyyy-mm-dd)	Frequency	Target value (W/kg)		Measured value(W/kg)		Deviation	
		10 g Average	1 g Average	10 g Average	1 g Average	10 g Average	1 g Average
2017-12-2	750 MHz	5.42	8.32	5.44	8.2	0.37%	-1.44%
2017-11-29	835 MHz	6.06	9.37	6	9.52	-0.99%	1.60%
2017-11-30	1750 MHz	19.4	36.7	19.76	37.36	1.86%	1.80%
2017-12-1	1900 MHz	21.0	40.0	21.12	40.64	0.57%	1.60%
2017-12-3	2450 MHz	24.7	52.2	24.2	53.24	-2.02%	1.99%
2017-12-2	2600 MHz	25.8	57.9	25.64	58.56	-0.62%	1.14%
2017-12-3	5250 MHz	23.7	82.7	24.2	82.4	1.94%	-0.36%

Table 8.2: System Verification of Body

Measurement Date (yyyy-mm-dd)	Frequency	Target value (W/kg)		Measured value (W/kg)		Deviation	
		10 g Average	1 g Average	10 g Average	1 g Average	10 g Average	1 g Average
2017-12-2	750 MHz	5.68	8.66	5.76	8.6	1.41%	-0.69%
2017-11-29	835 MHz	6.12	9.41	6.04	9.32	-1.31%	-0.96%
2017-11-30	1750 MHz	19.8	37.1	19.48	36.72	-1.62%	-1.02%
2017-12-1	1900 MHz	21.5	40.5	21.84	39.88	1.58%	-1.53%
2017-12-3	2450 MHz	23.8	50.4	23.72	50.36	-0.34%	-0.08%
2017-12-2	2600 MHz	24.8	55.5	24.76	56.16	-0.16%	1.19%
2017-12-3	5250 MHz	21.3	76.6	21.1	77.5	-1.03%	1.20%

9 Measurement Procedures

9.1 Tests to be performed

In order to determine the highest value of the peak spatial-average SAR of a handset, all device positions, configurations and operational modes shall be tested for each frequency band according to steps 1 to 3 below. A flowchart of the test process is shown in picture 9.1.

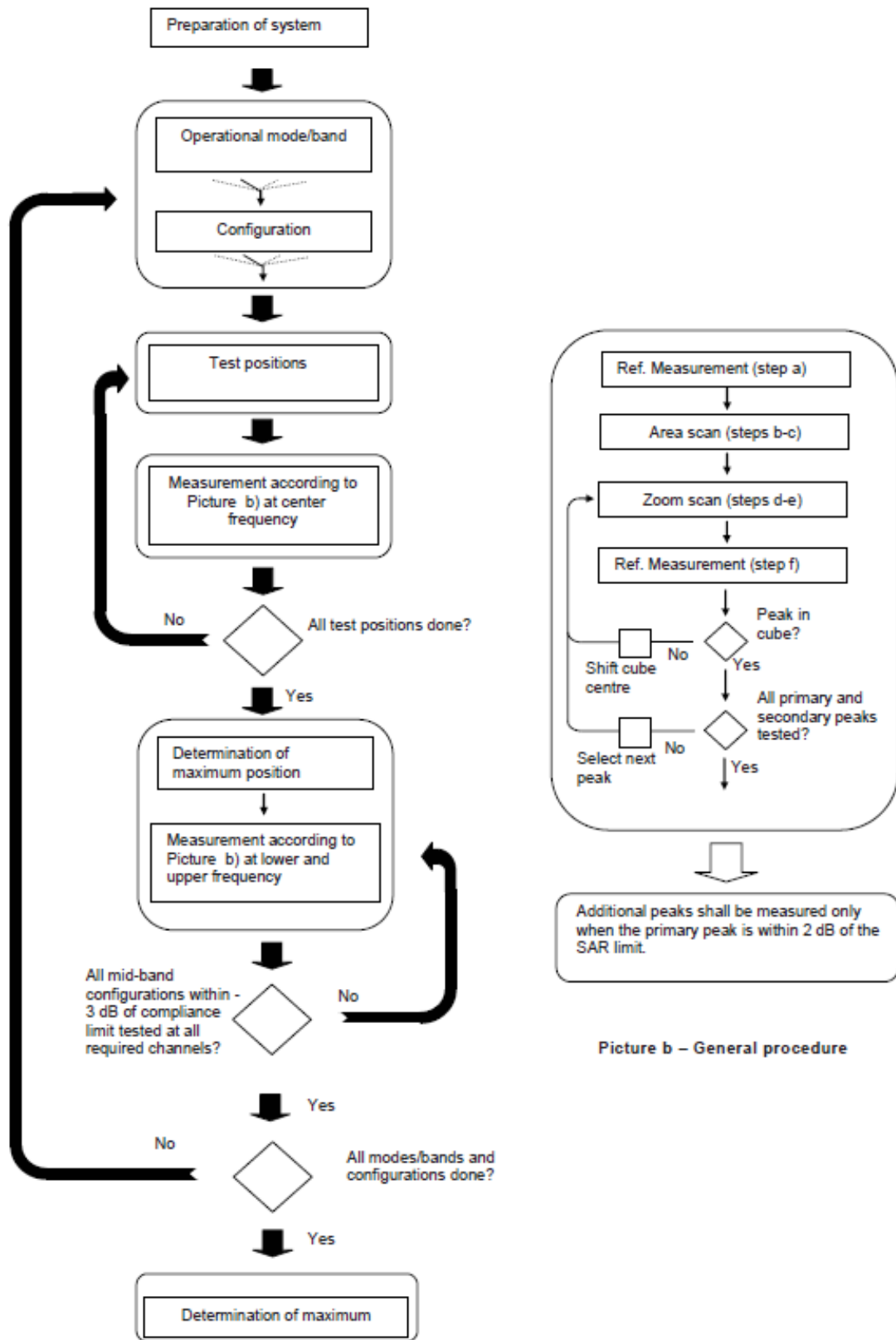
Step 1: The tests described in 9.2 shall be performed at the channel that is closest to the centre of the transmit frequency band (f_c) for:

- a) all device positions (cheek and tilt, for both left and right sides of the SAM phantom, as described in annex D),
- b) all configurations for each device position in a), e.g., antenna extended and retracted, and
- c) all operational modes, e.g., analogue and digital, for each device position in a) and configuration in b) in each frequency band.

If more than three frequencies need to be tested according to 11.1 (i.e., $N_c > 3$), then all frequencies, configurations and modes shall be tested for all of the above test conditions.

Step 2: For the condition providing highest peak spatial-average SAR determined in Step 1, perform all tests described in 9.2 at all other test frequencies, i.e., lowest and highest frequencies. In addition, for all other conditions (device position, configuration and operational mode) where the peak spatial-average SAR value determined in Step 1 is within 3 dB of the applicable SAR limit, it is recommended that all other test frequencies shall be tested as well.

Step 3: Examine all data to determine the highest value of the peak spatial-average SAR found in Steps 1 to 2.



Picture 9.1 Block diagram of the tests to be performed

9.2 General Measurement Procedure

The area and zoom scan resolutions specified in the table below must be applied to the SAR measurements and fully documented in SAR reports to qualify for TCB approval. Probe boundary effect error compensation is required for measurements with the probe tip closer than half a probe tip diameter to the phantom surface. Both the probe tip diameter and sensor offset distance must satisfy measurement protocols; to ensure probe boundary effect errors are minimized and the higher fields closest to the phantom surface can be correctly measured and extrapolated to the phantom surface for computing 1-g SAR. Tolerances of the post-processing algorithms must be verified by the test laboratory for the scan resolutions used in the SAR measurements, according to the reference distribution functions specified in IEEE Std 1528-2013. The results should be documented as part of the system validation records and may be requested to support test results when all the measurement parameters in the following table are not satisfied.

		≤ 3 GHz	> 3 GHz	
Maximum distance from closest measurement point (geometric center of probe sensors) to phantom surface		5 ± 1 mm	$\frac{1}{2} \cdot \delta \cdot \ln(2) \pm 0.5$ mm	
Maximum probe angle from probe axis to phantom surface normal at the measurement location		$30^\circ \pm 1^\circ$	$20^\circ \pm 1^\circ$	
Maximum area scan spatial resolution: Δx_{Area} , Δy_{Area}		≤ 2 GHz: ≤ 15 mm 2 – 3 GHz: ≤ 12 mm	3 – 4 GHz: ≤ 12 mm 4 – 6 GHz: ≤ 10 mm	
		When the x or y dimension of the test device, in the measurement plane orientation, is smaller than the above, the measurement resolution must be \leq the corresponding x or y dimension of the test device with at least one measurement point on the test device.		
Maximum zoom scan spatial resolution: Δx_{Zoom} , Δy_{Zoom}		≤ 2 GHz: ≤ 8 mm 2 – 3 GHz: ≤ 5 mm*	3 – 4 GHz: ≤ 5 mm* 4 – 6 GHz: ≤ 4 mm*	
Maximum zoom scan spatial resolution, normal to phantom surface	uniform grid: $\Delta z_{Zoom}(n)$	≤ 5 mm	3 – 4 GHz: ≤ 4 mm 4 – 5 GHz: ≤ 3 mm 5 – 6 GHz: ≤ 2 mm	
	graded grid	$\Delta z_{Zoom}(1)$: between 1 st two points closest to phantom surface	≤ 4 mm	3 – 4 GHz: ≤ 3 mm 4 – 5 GHz: ≤ 2.5 mm 5 – 6 GHz: ≤ 2 mm
		$\Delta z_{Zoom}(n>1)$: between subsequent points	$\leq 1.5 \cdot \Delta z_{Zoom}(n-1)$	
Minimum zoom scan volume	x, y, z	≥ 30 mm	3 – 4 GHz: ≥ 28 mm 4 – 5 GHz: ≥ 25 mm 5 – 6 GHz: ≥ 22 mm	
<p>Note: δ is the penetration depth of a plane-wave at normal incidence to the tissue medium; see draft standard IEEE P1528-2011 for details.</p> <p>* When zoom scan is required and the <i>reported</i> SAR from the area scan based 1-g SAR estimation procedures of KDB 447498 is ≤ 1.4 W/kg, ≤ 8 mm, ≤ 7 mm and ≤ 5 mm zoom scan resolution may be applied, respectively, for 2 GHz to 3 GHz, 3 GHz to 4 GHz and 4 GHz to 6 GHz.</p>				

9.3 WCDMA Measurement Procedures for SAR

The following procedures are applicable to WCDMA handsets operating under 3GPP Release99, Release 5 and Release 6. The default test configuration is to measure SAR with an established radio link between the DUT and a communication test set using a 12.2kbps RMC (reference measurement channel) configured in Test Loop Mode 1. SAR is selectively confirmed for other physical channel configurations (DPCCH & DPDCH_n), HSDPA and HSPA (HSUPA/HSDPA) modes according to output power, exposure conditions and device operating capabilities. Both uplink and downlink should be configured with the same RMC or AMR, when required. SAR for Release 5 HSDPA and Release 6 HSPA are measured using the applicable FRC (fixed reference channel) and E-DCH reference channel configurations. Maximum output power is verified according to applicable versions of 3GPP TS 34.121 and SAR must be measured according to these maximum output conditions. When Maximum Power Reduction (MPR) is not implemented according to Cubic Metric (CM) requirements for Release 6 HSPA, the following procedures do not apply.

For Release 5 HSDPA Data Devices:

Sub-test	β_c	β_d	β_d (SF)	β_c / β_d	β_{hs}	CM/dB
1	2/15	15/15	64	2/15	4/15	0.0
2	12/15	15/15	64	12/15	24/25	1.0
3	15/15	8/15	64	15/8	30/15	1.5
4	15/15	4/15	64	15/4	30/15	1.5

For Release 6 HSPA Data Devices

Sub-test	β_c	β_d	β_d (SF)	β_c / β_d	β_{hs}	β_{ec}	β_{ed}	β_{ed} (SF)	β_{ed} (codes)	CM (dB)	MPR (dB)	AG Index	E-TFCI
1	11/15	15/15	64	11/15	22/15	209/225	1039/225	4	1	1.5	1.5	20	75
2	6/15	15/15	64	6/15	12/15	12/15	12/15	4	1	1.5	1.5	12	67
3	15/15	9/15	64	15/9	30/15	30/15	$\beta_{ed1}:47/15$ $\beta_{ed2}:47/15$	4	2	1.5	1.5	15	92
4	2/15	15/15	64	2/15	4/15	4/15	56/75	4	1	1.5	1.5	17	71
5	15/15	15/15	64	15/15	24/15	30/15	134/15	4	1	1.5	1.5	21	81

Rel.8 DC-HSDPA (Cat 24)

SAR test exclusion for Rel.8 DC-HSDPA must satisfy the SAR test exclusion requirements of Rel.5 HSDPA. SAR test exclusion for DC-HSDPA devices is determined by power measurements according to the H-Set 12, Fixed Reference Channel (FRC) configuration in Table C.8.1.12 of 3GPP TS 34.121-1. A primary and a secondary serving HS-DSCH Cell are required to perform the power measurement and for the results to qualify for SAR test exclusion.

9.4 SAR Measurement for LTE

SAR tests for LTE are performed with a base station simulator, Rohde & Schwarz CMW500. Closed loop power control was used so the UE transmits with maximum output power during SAR testing. All powers were measured with the CMW 500.

It is performed for conducted power and SAR based on the KDB941225 D05.

SAR is evaluated separately according to the following procedures for the different test positions in each exposure condition – head, body, body-worn accessories and other use conditions. The procedures in the following subsections are applied separately to test each LTE frequency band.

1) QPSK with 1 RB allocation

Start with the largest channel bandwidth and measure SAR for QPSK with 1 RB allocation, using the RB offset and required test channel combination with the highest maximum output power among RB offsets at the upper edge, middle and lower edge of each required test channel. When the reported SAR is ≤ 0.8 W/kg, testing of the remaining RB offset configurations and required test channels is not required for 1 RB allocation; otherwise, SAR is required for the remaining required test channels and only for the RB offset configuration with the highest output power for that channel. When the reported SAR of a required test channel is > 1.45 W/kg, SAR is required for all three RB offset configurations for that required test channel.

2) QPSK with 50% RB allocation

The procedures required for 1 RB allocation in 1) are applied to measure the SAR for QPSK with 50% RB allocation.

3) QPSK with 100% RB allocation

For QPSK with 100% RB allocation, SAR is not required when the highest maximum output power for 100 % RB allocation is less than the highest maximum output power in 50% and 1 RB allocations and the highest reported SAR for 1 RB and 50% RB allocation in 1) and 2) are ≤ 0.8 W/kg. Otherwise, SAR is measured for the highest output power channel; and if the reported SAR is > 1.45 W/kg, the remaining required test channels must also be tested.

9.5 Bluetooth & Wi-Fi Measurement Procedures for SAR

Normal network operating configurations are not suitable for measuring the SAR of 802.11 transmitters in general. Unpredictable fluctuations in network traffic and antenna diversity conditions can introduce undesirable variations in SAR results. The SAR for these devices should be measured using chipset based test mode software to ensure that the results are consistent and reliable.

Chipset based test mode software is hardware dependent and generally varies among manufacturers. The device operating parameters established in a test mode for SAR measurements must be identical to those programmed in production units, including output power levels, amplifier gain settings and other RF performance tuning parameters. The test frequencies should correspond to actual channel frequencies defined for domestic use. SAR for devices with switched diversity should be measured with only one antenna transmitting at a time during each SAR measurement, according to a fixed modulation and data rate. The same data pattern should be used for all measurements.

9.6 Power Drift

To control the output power stability during the SAR test, DASY5 system calculates the power drift by measuring the E-field at the same location at the beginning and at the end of the measurement for each test position. These drift values can be found in section 14 labeled as: (Power Drift [dB]). This ensures that the power drift during one measurement is within 5%.

10 Area Scan Based 1-g SAR

10.1 Requirement of KDB

According to the KDB447498 D01 v05, when the implementation is based on the specific polynomial fit algorithm as presented at the 29th Bioelectromagnetics Society meeting (2007) and the estimated 1-g SAR is ≤ 1.2 W/kg, a zoom scan measurement is not required provided it is also not needed for any other purpose; for example, if the peak SAR location required for simultaneous transmission SAR test exclusion can be determined accurately by the SAR system or manually to discriminate between distinctive peaks and scattered noisy SAR distributions from area scans.

There must not be any warning or alert messages due to various measurement concerns identified by the SAR system; for example, noise in measurements, peaks too close to scan boundary, peaks are too sharp, spatial resolution and uncertainty issues etc. The SAR system verification must also demonstrate that the area scan estimated 1-g SAR is within 3% of the zoom scan 1-g SAR (See Annex B). When all the SAR results for each exposure condition in a frequency band and wireless mode are based on estimated 1-g SAR, the 1-g SAR for the highest SAR configuration must be determined by a zoom scan.

10.2 Fast SAR Algorithms

The approach is based on the area scan measurement applying a frequency dependent attenuation parameter. This attenuation parameter was empirically determined by analyzing a large number of phones. The MOTOROLA FAST SAR was developed and validated by the MOTOROLA Research Group in Ft. Lauderdale.

In the initial study, an approximation algorithm based on Linear fit was developed. The accuracy of the algorithm has been demonstrated across a broad frequency range (136-2450 MHz) and for both 1- and 10-g averaged SAR using a sample of 264 SAR measurements from 55 wireless handsets. For the sample size studied, the root-mean-squared errors of the algorithm were 1.2% and 5.8% for 1- and 10-g averaged SAR, respectively. The paper describing the algorithm in detail is expected to be published in August 2004 within the Special Issue of Transactions on MTT.

In the second step, the same research group optimized the fitting algorithm to an Polynomial fit whereby the frequency validity was extended to cover the range 30-6000 MHz. Details of this study can be found in the BEMS 2007 Proceedings.

Both algorithms are implemented in DASY software.

11 Conducted Output Power

When WLAN Hotspot mode is activated (AP ON), the conducted output power will be reduced for WCDMA 1900 and LTE band 2. When WLAN Hotspot mode is deactivated (AP OFF), the RF output power level return to their normal RF power level.

11.1 GSM Measurement result

During the process of testing, the EUT was controlled via Agilent Digital Radio Communication tester (E5515C) to ensure the maximum power transmission and proper modulation. This result contains conducted output power for the EUT. In all cases, the measured peak output power should be greater and within 5% than EMI measurement.

Table 11.1-1: The conducted power measurement results for GSM, GPRS and EGPRS

GSM 850 Speech (GMSK)	Measured Power (dBm)			Tune up	calculation	Averaged Power (dBm)		
	251	190	128			251	190	128
1 Txslot	31.59	31.57	31.51	33	/	/	/	/
GSM 850 GPRS (GMSK)	Measured Power (dBm)				calculation	Averaged Power (dBm)		
	251	190	128			251	190	128
1 Txslot	31.65	31.58	31.51	33.3	-9.03	22.62	22.55	22.48
2 Txslots	31.49	31.43	31.36	32.5	-6.02	25.47	25.41	25.34
3Txslots	29.39	29.32	29.23	30.5	-4.26	25.13	25.06	24.97
4 Txslots	27.87	27.79	27.68	28.5	-3.01	24.86	24.78	24.67
GSM 850 EGPRS (GMSK)	Measured Power (dBm)				calculation	Averaged Power (dBm)		
	251	190	128			251	190	128
1 Txslot	31.63	31.53	31.99	33.3	-9.03	22.60	22.50	22.96
2 Txslots	31.39	31.38	31.85	32.5	-6.02	25.37	25.36	25.83
3Txslots	29.21	29.28	29.72	30.5	-4.26	24.95	25.02	25.46
4 Txslots	27.30	27.75	28.17	28.5	-3.01	24.29	24.74	25.16
GSM 850 EGPRS (8PSK)	Measured Power (dBm)				calculation	Averaged Power (dBm)		
	251	190	128			251	190	128
1 Txslot	25.35	25.47	25.47	27	-9.03	16.32	16.44	16.44
2 Txslots	24.37	24.34	24.92	25.5	-6.02	18.35	18.32	18.90
3Txslots	22.64	22.51	22.67	24	-4.26	18.38	18.25	18.41
4 Txslots	21.55	21.45	22.18	23	-3.01	18.54	18.44	19.17
PCS1900 Speech (GMSK)	Measured Power (dBm)			Tune up	calculation	Averaged Power (dBm)		
	810	661	512			810	661	512
1 Txslot	29.95	30.06	30.16	31	/	/	/	/
PCS1900 GPRS (GMSK)	Measured Power (dBm)				calculation	Averaged Power (dBm)		
	810	661	512			810	661	512
1 Txslot	29.90	30.03	30.12	31	-9.03	20.87	21.00	21.09
2 Txslots	28.38	28.51	28.58	29.5	-6.02	22.36	22.49	22.56
3Txslots	26.40	26.51	26.55	27.5	-4.26	22.14	22.25	22.29
4 Txslots	24.98	25.07	25.11	26	-3.01	21.97	22.06	22.10

PCS1900 EGPRS (GMSK)	Measured Power (dBm)				calculation	Averaged Power (dBm)		
	810	661	512			810	661	512
1 Txslot	29.81	30.06	30.11	31	-9.03	20.78	21.03	21.08
2 Txslots	28.32	28.57	28.57	29.5	-6.02	22.30	22.55	22.55
3Txslots	26.36	26.57	26.55	27.5	-4.26	22.10	22.31	22.29
4 Txslots	24.95	25.13	25.11	26	-3.01	21.94	22.12	22.10
PCS1900 EGPRS (8PSK)	Measured Power (dBm)				calculation	Averaged Power (dBm)		
	810	661	512			810	661	512
1 Txslot	25.51	25.67	25.41	26.5	-9.03	16.48	16.64	16.38
2 Txslots	24.95	24.52	24.43	25.5	-6.02	18.93	18.50	18.41
3Txslots	22.55	22.70	22.39	23.5	-4.26	18.29	18.44	18.13
4 Txslots	21.14	21.20	21.03	22	-3.01	18.13	18.19	18.02

NOTES:

1) Division Factors

To average the power, the division factor is as follows:

1TX-slot = 1 transmit time slot out of 8 time slots=> conducted power divided by (8/1) => -9.03dB

2TX-slots = 2 transmit time slots out of 8 time slots=> conducted power divided by (8/2) => -6.02dB

3TX-slots = 3 transmit time slots out of 8 time slots=> conducted power divided by (8/3) => -4.26dB

4TX-slots = 4 transmit time slots out of 8 time slots=> conducted power divided by (8/4) => -3.01dB

According to the conducted power as above, the body measurements are performed with 2Txslots for GPRS and EGPRS.

11.2 WCDMA Measurement result

Hotspot off

Table 11.2-1: The conducted Power for WCDMA

Item	band	FDDV result			
	ARFCN	4233 (846.6MHz)	4182 (836.4MHz)	4132 (826.4MHz)	Tune up
WCDMA	\	22.19	22.20	22.26	24
HSUPA	1	19.04	19.12	19.15	21
	2	19.02	19.09	19.12	21
	3	20.01	20.09	20.12	21
	4	18.46	18.55	18.58	20
	5	21.01	21.05	21.09	23
HSPA+	1	18.07	18.20	18.23	19.5
DC-HSDPA	1	20.60	20.68	20.70	22
	2	20.61	20.70	20.69	22
	3	20.62	20.67	20.67	22
	4	20.59	20.69	20.68	22

Item	band	FDDIV result			
	ARFCN	1513 (1752.6MHz)	1412 (1732.4MHz)	1312 (1712.4MHz)	
WCDMA	\	23.37	23.40	23.42	24
HSUPA	1	20.58	20.63	20.61	21.5
	2	20.57	20.64	20.62	21
	3	21.63	21.65	21.63	22
	4	20.08	20.10	20.08	20.5
	5	22.56	22.59	22.57	23
HSPA+	1	19.67	19.71	19.58	20.5
DC-HSDPA	1	22.24	22.23	22.20	23
	2	22.26	22.25	22.19	23
	3	22.25	22.24	22.21	23
	4	22.24	22.27	22.22	23
Item	band	FDDII result			
	ARFCN	9538 (1907.6MHz)	9400 (1880MHz)	9262 (1852.4MHz)	
WCDMA	\	23.01	23.06	23.11	24
HSUPA	1	20.16	20.16	20.26	21
	2	20.17	20.18	20.18	21
	3	21.18	21.17	21.20	21.5
	4	19.63	19.62	19.64	20.5
	5	22.11	22.10	22.13	23
HSPA+	1	19.39	19.37	19.40	20.5
DC-HSDPA	1	21.92	21.90	21.89	23
	2	21.93	21.87	21.88	23
	3	21.94	21.86	21.86	23
	4	21.92	21.88	21.87	23

Hotspot on

Table 11.2-2: The conducted Power for WCDMA

Item	band	FDDII result			
	ARFCN	9538 (1907.6MHz)	9400 (1880MHz)	9262 (1852.4MHz)	
WCDMA	\	21.35	21.47	21.56	22.5
HSUPA	1	19.21	19.19	19.25	21
	2	19.15	19.12	19.14	21
	3	20.12	20.11	20.15	21.5
	4	18.62	18.67	18.71	20.5
	5	21.09	21.06	21.12	23
HSPA+	1	18.41	18.37	18.39	19.5
DC-HSDPA	1	20.92	20.89	20.86	22
	2	20.95	20.88	20.87	22
	3	20.93	20.86	20.87	22
	4	20.92	20.90	20.89	22

11.3 LTE Measurement result

Hotspot off

Table 11.3-1: The conducted Power for LTE

Band 2							
Bandwidth (MHz)	RB allocation	Frequency (MHz)	Max. Target Power (dBm)	QPSK		16QAM	
	RB offset (Start RB)			Actual output power (dBm)	MPR	Actual output power (dBm)	MPR
1.4 MHz	1RB High (5)	1909.3	24	22.88	0	21.83	1
		1880	24	22.99	0	22.06	1
		1850.7	24	23.04	0	22.27	1
	1RB Middle (3)	1909.3	24	22.90	0	21.85	1
		1880	24	22.99	0	22.15	1
		1850.7	24	23.07	0	22.36	1
	1RB Low (0)	1909.3	24	22.83	0	21.84	1
		1880	24	22.86	0	22.04	1
		1850.7	24	22.99	0	22.32	1
	3RB High (3)	1909.3	24	22.88	0	22.04	1
		1880	24	22.95	0	22.06	1
		1850.7	24	23.00	0	22.16	1
	3RB Middle (1)	1909.3	24	22.86	0	22.04	1
		1880	24	22.91	0	21.96	1
		1850.7	24	22.97	0	22.11	1
	3RB Low (0)	1909.3	24	22.92	0	22.08	1
		1880	24	22.94	0	21.99	1
		1850.7	24	23.01	0	22.18	1
	6RB (0)	1909.3	24	21.93	1	21.08	2
		1880	24	21.95	1	20.99	2
		1850.7	24	22.01	1	21.19	2
3 MHz	1RB High (14)	1908.5	24	22.81	0	21.76	1
		1880	24	22.92	0	21.81	1
		1851.5	24	23.02	0	22.27	1
	1RB Middle (7)	1908.5	24	22.88	0	21.89	1
		1880	24	22.94	0	21.87	1
		1851.5	24	23.09	0	22.34	1
	1RB Low (0)	1908.5	24	22.85	0	21.90	1
		1880	24	22.88	0	21.83	1
		1851.5	24	22.99	0	22.30	1
	8RB High (7)	1908.5	24	21.89	1	20.95	2
		1880	24	21.96	1	21.05	2
		1851.5	24	22.05	1	21.06	2
	8RB Middle (4)	1908.5	24	21.91	1	20.97	2
		1880	24	21.97	1	21.10	2
		1851.5	24	22.04	1	21.08	2
8RB Low (0)	1908.5	24	21.91	1	20.97	2	
	1880	24	21.96	1	21.09	2	
	1851.5	24	22.07	1	21.09	2	

	15RB (0)	1908.5	24	21.88	1	20.87	2	
		1880	24	21.94	1	20.98	2	
		1851.5	24	22.00	1	21.00	2	
5 MHz	1RB High (24)	1907.5	24	22.83	0	21.95	1	
		1880	24	22.96	0	22.42	1	
		1852.5	24	22.96	0	22.03	1	
	1RB Middle (12)	1907.5	24	22.92	0	22.04	1	
		1880	24	23.02	0	22.49	1	
		1852.5	24	23.03	0	22.08	1	
	1RB Low (0)	1907.5	24	22.99	0	22.11	1	
		1880	24	23.02	0	22.51	1	
		1852.5	24	23.09	0	22.10	1	
	12RB High (13)	1907.5	24	21.93	1	21.02	2	
		1880	24	21.98	1	21.13	2	
		1852.5	24	22.02	1	21.04	2	
	12RB Middle (6)	1907.5	24	21.97	1	21.05	2	
		1880	24	22.02	1	21.14	2	
		1852.5	24	22.05	1	21.06	2	
	12RB Low (0)	1907.5	24	22.02	1	21.10	2	
		1880	24	22.01	1	21.14	2	
		1852.5	24	22.07	1	21.09	2	
	25RB (0)	1907.5	24	21.94	1	20.97	2	
		1880	24	21.98	1	21.01	2	
		1852.5	24	22.00	1	20.93	2	
	10 MHz	1RB High (49)	1905	24	22.73	0	21.71	1
			1880	24	22.91	0	22.28	1
			1855	24	23.17	0	22.15	1
1RB Middle (24)		1905	24	22.90	0	21.83	1	
		1880	24	22.94	0	22.30	1	
		1855	24	23.02	0	21.96	1	
1RB Low (0)		1905	24	22.97	0	21.97	1	
		1880	24	23.02	0	22.38	1	
		1855	24	23.12	0	22.03	1	
25RB High (25)		1905	24	21.91	1	20.98	2	
		1880	24	21.99	1	20.98	2	
		1855	24	22.08	1	21.13	2	
25RB Middle (12)		1905	24	21.98	1	21.03	2	
		1880	24	22.00	1	21.03	2	
		1855	24	22.04	1	21.10	2	
25RB Low (0)		1905	24	22.00	1	21.07	2	
		1880	24	21.98	1	21.01	2	
		1855	24	22.05	1	21.07	2	
50RB (0)		1905	24	21.98	1	20.99	2	
		1880	24	21.98	1	20.98	2	
		1855	24	22.05	1	21.04	2	
15 MHz		1RB High (74)	1902.5	24	22.61	0	21.56	1
			1880	24	22.98	0	22.26	1
			1857.5	24	23.08	0	22.40	1

	1RB Middle (37)	1902.5	24	22.89	0	21.83	1	
		1880	24	23.05	0	22.33	1	
		1857.5	24	22.85	0	22.16	1	
	1RB Low (0)	1902.5	24	22.98	0	21.93	1	
		1880	24	23.12	0	22.40	1	
		1857.5	24	22.88	0	22.17	1	
	36RB High (38)	1902.5	24	21.90	1	20.89	2	
		1880	24	21.99	1	21.02	2	
		1857.5	24	22.02	1	20.98	2	
	36RB Middle (19)	1902.5	24	21.93	1	20.92	2	
		1880	24	22.03	1	21.07	2	
		1857.5	24	21.86	1	20.82	2	
	36RB Low (0)	1902.5	24	21.98	1	20.98	2	
		1880	24	22.03	1	21.06	2	
		1857.5	24	21.86	1	20.81	2	
	75RB (0)	1902.5	24	21.96	1	20.94	2	
		1880	24	22.02	1	21.01	2	
		1857.5	24	21.94	1	20.88	2	
	20 MHz	1RB High (99)	1900	24	22.52	0	22.07	1
			1880	24	22.92	0	22.32	1
			1860	24	23.16	0	22.64	1
		1RB Middle (50)	1900	24	22.94	0	22.36	1
			1880	24	22.99	0	22.37	1
			1860	24	22.96	0	22.45	1
		1RB Low (0)	1900	24	23.06	0	22.49	1
			1880	24	23.00	0	22.39	1
			1860	24	22.88	0	22.32	1
50RB High (50)		1900	24	21.87	1	20.94	2	
		1880	24	21.98	1	20.93	2	
		1860	24	22.06	1	21.06	2	
50RB Middle (25)		1900	24	21.90	1	20.99	2	
		1880	24	22.00	1	20.95	2	
		1860	24	21.94	1	20.95	2	
50RB Low (0)		1900	24	21.96	1	21.01	2	
		1880	24	22.02	1	20.99	2	
		1860	24	21.81	1	20.81	2	
100RB (0)		1900	24	21.91	1	20.97	2	
		1880	24	21.98	1	20.95	2	
		1860	24	21.93	1	20.95	2	

Band 4								
Bandwidth (MHz)	RB allocation	Frequency (MHz)	Max. Target Power (dBm)	QPSK		16QAM		
	RB offset (Start RB)			Actual output power (dBm)	MPR	Actual output power (dBm)	MPR	
1.4 MHz	1RB High (5)	1754.3	24	23.19	0	22.45	1	
		1732.5	24	23.18	0	22.13	1	
		1710.7	24	23.14	0	22.21	1	
	1RB Middle (3)	1754.3	24	23.22	0	22.50	1	
		1732.5	24	23.21	0	22.15	1	
		1710.7	24	23.20	0	22.26	1	
	1RB Low (0)	1754.3	24	23.24	0	22.50	1	
		1732.5	24	23.20	0	22.11	1	
		1710.7	24	23.13	0	22.21	1	
	3RB High (3)	1754.3	24	23.20	0	22.31	1	
		1732.5	24	23.22	0	22.32	1	
		1710.7	24	23.24	0	22.22	1	
	3RB Middle (1)	1754.3	24	23.14	0	22.29	1	
		1732.5	24	23.15	0	22.28	1	
		1710.7	24	23.19	0	22.14	1	
	3RB Low (0)	1754.3	24	23.20	0	22.37	1	
		1732.5	24	23.22	0	22.32	1	
		1710.7	24	23.23	0	22.19	1	
	6RB (0)	1754.3	24	22.90	1	21.97	2	
		1732.5	24	22.92	1	21.92	2	
		1710.7	24	22.93	1	21.89	2	
	3 MHz	1RB High (14)	1753.5	24	23.10	0	21.93	1
			1732.5	24	23.13	0	22.42	1
			1711.5	24	23.06	0	22.04	1
		1RB Middle (7)	1753.5	24	23.18	0	22.03	1
			1732.5	24	23.22	0	22.49	1
			1711.5	24	23.15	0	22.13	1
1RB Low (0)		1753.5	24	23.15	0	22.02	1	
		1732.5	24	23.18	0	22.45	1	
		1711.5	24	23.11	0	22.11	1	
8RB High (7)		1753.5	24	22.24	1	21.30	2	
		1732.5	24	22.21	1	21.26	2	
		1711.5	24	22.21	1	21.21	2	
8RB Middle (4)		1753.5	24	22.27	1	21.32	2	
		1732.5	24	22.23	1	21.28	2	
		1711.5	24	22.22	1	21.22	2	
8RB Low (0)		1753.5	24	22.24	1	21.31	2	
		1732.5	24	22.22	1	21.29	2	
		1711.5	24	22.25	1	21.25	2	
15RB (0)		1753.5	24	22.20	1	21.19	2	
		1732.5	24	22.15	1	21.18	2	
		1711.5	24	22.18	1	21.11	2	

5 MHz	1RB High (24)	1752.5	24	23.23	0	22.25	1	
		1732.5	24	23.16	0	22.59	1	
		1712.5	24	23.21	0	22.23	1	
	1RB Middle (12)	1752.5	24	23.34	0	22.37	1	
		1732.5	24	23.22	0	22.68	1	
		1712.5	24	23.26	0	22.26	1	
	1RB Low (0)	1752.5	24	23.41	0	22.41	1	
		1732.5	24	23.26	0	22.69	1	
		1712.5	24	23.29	0	22.24	1	
	12RB High (13)	1752.5	24	22.21	1	21.28	2	
		1732.5	24	22.20	1	21.31	2	
		1712.5	24	22.20	1	21.23	2	
	12RB Middle (6)	1752.5	24	22.25	1	21.29	2	
		1732.5	24	22.22	1	21.32	2	
		1712.5	24	22.21	1	21.23	2	
	12RB Low (0)	1752.5	24	22.31	1	21.37	2	
		1732.5	24	22.23	1	21.35	2	
		1712.5	24	22.24	1	21.27	2	
	25RB (0)	1752.5	24	22.22	1	21.21	2	
		1732.5	24	22.15	1	21.19	2	
		1712.5	24	22.15	1	21.09	2	
	10 MHz	1RB High (49)	1750	24	23.04	0	21.89	1
			1732.5	24	23.16	0	22.47	1
			1715	24	23.17	0	22.14	1
1RB Middle (24)		1750	24	23.15	0	22.02	1	
		1732.5	24	23.19	0	22.47	1	
		1715	24	22.93	0	21.87	1	
1RB Low (0)		1750	24	23.26	0	22.10	1	
		1732.5	24	23.27	0	22.59	1	
		1715	24	23.02	0	21.94	1	
25RB High (25)		1750	24	22.11	1	21.13	2	
		1732.5	24	22.17	1	21.18	2	
		1715	24	22.05	1	21.16	2	
25RB Middle (12)		1750	24	22.16	1	21.17	2	
		1732.5	24	22.16	1	21.20	2	
		1715	24	21.93	1	21.02	2	
25RB Low (0)		1750	24	22.20	1	21.20	2	
		1732.5	24	22.21	1	21.21	2	
		1715	24	21.91	1	21.01	2	
50RB (0)		1750	24	22.15	1	21.13	2	
		1732.5	24	22.16	1	21.17	2	
		1715	24	21.97	1	20.99	2	
15 MHz		1RB High (74)	1747.5	24	23.06	0	21.93	1
			1732.5	24	23.22	0	22.47	1
			1717.5	24	23.35	0	22.59	1
	1RB Middle (37)	1747.5	24	23.22	0	22.08	1	
		1732.5	24	23.23	0	22.51	1	
		1717.5	24	23.14	0	22.41	1	

	1RB Low (0)	1747.5	24	23.35	0	22.17	1
		1732.5	24	23.28	0	22.55	1
		1717.5	24	23.06	0	22.31	1
	36RB High (38)	1747.5	24	22.24	1	21.18	2
		1732.5	24	22.28	1	21.25	2
		1717.5	24	22.29	1	21.21	2
	36RB Middle (19)	1747.5	24	22.27	1	21.22	2
		1732.5	24	22.29	1	21.27	2
		1717.5	24	22.17	1	21.12	2
	36RB Low (0)	1747.5	24	22.35	1	21.26	2
		1732.5	24	22.29	1	21.29	2
		1717.5	24	22.05	1	20.97	2
	75RB (0)	1747.5	24	22.30	1	21.23	2
		1732.5	24	22.30	1	21.26	2
		1717.5	24	22.18	1	21.12	2
20 MHz	1RB High (99)	1745	24	23.09	0	22.40	1
		1732.5	24	23.25	0	22.68	1
		1720	24	23.37	0	22.68	1
	1RB Middle (50)	1745	24	23.24	0	22.54	1
		1732.5	24	23.26	0	22.71	1
		1720	24	23.20	0	22.54	1
	1RB Low (0)	1745	24	23.34	0	22.61	1
		1732.5	24	23.21	0	22.68	1
		1720	24	22.94	0	22.29	1
	50RB High (50)	1745	24	22.17	1	21.13	2
		1732.5	24	22.19	1	21.20	2
		1720	24	22.23	1	21.25	2
	50RB Middle (25)	1745	24	22.22	1	21.16	2
		1732.5	24	22.22	1	21.21	2
		1720	24	22.09	1	21.11	2
	50RB Low (0)	1745	24	22.29	1	21.24	2
		1732.5	24	22.21	1	21.23	2
		1720	24	21.97	1	20.99	2
	100RB (0)	1745	24	22.23	1	21.19	2
		1732.5	24	22.18	1	21.20	2
		1720	24	22.07	1	21.07	2

Band 5								
Bandwidth (MHz)	RB allocation	Frequency (MHz)	Max. Target Power (dBm)	QPSK		16QAM		
	RB offset (Start RB)			Actual output power (dBm)	MPR	Actual output power (dBm)	MPR	
1.4 MHz	1RB High (5)	848.3	24	23.29	0	22.10	1	
		836.5	24	23.26	0	22.18	1	
		824.7	24	23.14	0	22.48	1	
	1RB Middle (3)	848.3	24	23.34	0	22.12	1	
		836.5	24	23.31	0	22.23	1	
		824.7	24	23.25	0	22.52	1	
	1RB Low (0)	848.3	24	23.30	0	22.09	1	
		836.5	24	23.23	0	22.17	1	
		824.7	24	23.24	0	22.52	1	
	3RB High (3)	848.3	24	23.26	0	22.30	1	
		836.5	24	23.20	0	22.22	1	
		824.7	24	23.29	0	22.37	1	
	3RB Middle (1)	848.3	24	23.19	0	22.25	1	
		836.5	24	23.19	0	22.12	1	
		824.7	24	23.41	0	22.31	1	
	3RB Low (0)	848.3	24	23.24	0	22.30	1	
		836.5	24	23.28	0	22.19	1	
		824.7	24	23.37	0	22.42	1	
	6RB (0)	848.3	24	22.21	1	21.31	2	
		836.5	24	22.27	1	21.19	2	
		824.7	24	22.37	1	21.40	2	
	3 MHz	1RB High (14)	847.5	24	23.29	0	21.95	1
			836.5	24	23.28	0	21.95	1
			825.5	24	23.57	0	22.44	1
1RB Middle (7)		847.5	24	23.34	0	22.12	1	
		836.5	24	23.19	0	21.97	1	
		825.5	24	23.23	0	22.49	1	
1RB Low (0)		847.5	24	23.29	0	22.10	1	
		836.5	24	23.26	0	21.95	1	
		825.5	24	23.31	0	22.50	1	
8RB High (7)		847.5	24	22.27	1	21.21	2	
		836.5	24	22.27	1	21.25	2	
		825.5	24	22.23	1	21.28	2	
8RB Middle (4)		847.5	24	22.28	1	21.23	2	
		836.5	24	22.27	1	21.26	2	
		825.5	24	22.32	1	21.31	2	
8RB Low (0)		847.5	24	22.28	1	21.23	2	
		836.5	24	22.30	1	21.29	2	
		825.5	24	22.35	1	21.29	2	
15RB (0)		847.5	24	22.21	1	21.13	2	
		836.5	24	22.22	1	21.18	2	
		825.5	24	22.27	1	21.21	2	

5 MHz	1RB High (24)	846.5	24	23.21	0	22.27	1	
		836.5	24	23.20	0	22.62	1	
		826.5	24	23.20	0	22.23	1	
	1RB Middle (12)	846.5	24	23.27	0	22.33	1	
		836.5	24	23.24	0	22.64	1	
		826.5	24	23.22	0	22.25	1	
	1RB Low (0)	846.5	24	23.30	0	22.39	1	
		836.5	24	23.30	0	22.67	1	
		826.5	24	23.27	0	22.29	1	
	12RB High (13)	846.5	24	22.22	1	21.26	2	
		836.5	24	22.18	1	21.34	2	
		826.5	24	22.21	1	21.27	2	
	12RB Middle (6)	846.5	24	22.23	1	21.30	2	
		836.5	24	22.21	1	21.34	2	
		826.5	24	22.23	1	21.27	2	
	12RB Low (0)	846.5	24	22.27	1	21.33	2	
		836.5	24	22.23	1	21.36	2	
		826.5	24	22.23	1	21.30	2	
	25RB (0)	846.5	24	22.20	1	21.21	2	
		836.5	24	22.17	1	21.23	2	
		826.5	24	22.20	1	21.14	2	
	10 MHz	1RB High (49)	844.0	24	23.19	0	22.01	1
			836.5	24	23.28	0	22.02	1
			829.0	24	23.26	0	22.43	1
1RB Middle (24)		844.0	24	23.27	0	22.09	1	
		836.5	24	23.28	0	22.00	1	
		829.0	24	23.30	0	22.47	1	
1RB Low (0)		844.0	24	23.25	0	22.18	1	
		836.5	24	23.28	0	22.07	1	
		829.0	24	23.32	0	22.55	1	
25RB High (25)		844.0	24	22.44	1	21.20	2	
		836.5	24	22.23	1	21.20	2	
		829.0	24	22.33	1	21.20	2	
25RB Middle (12)		844.0	24	22.17	1	21.25	2	
		836.5	24	22.24	1	21.19	2	
		829.0	24	22.23	1	21.22	2	
25RB Low (0)		844.0	24	22.17	1	21.24	2	
		836.5	24	22.27	1	21.19	2	
		829.0	24	22.01	1	21.24	2	
50RB (0)		844.0	24	22.17	1	21.19	2	
		836.5	24	21.88	1	21.18	2	
		829.0	24	22.18	1	21.20	2	

Band 7								
Bandwidth (MHz)	RB allocation	Frequency (MHz)	Max. Target Power (dBm)	QPSK		16QAM		
	RB offset (Start RB)			Actual output power (dBm)	MPR	Actual output power (dBm)	MPR	
5 MHz	1RB High (24)	2567.5	23	22.41	0	21.59	1	
		2535	23	22.21	0	21.67	1	
		2502.5	23	22.43	0	21.49	1	
	1RB Middle (12)	2567.5	23	22.38	0	21.76	1	
		2535	23	22.31	0	21.76	1	
		2502.5	23	22.61	0	21.58	1	
	1RB Low (0)	2567.5	23	22.17	0	21.55	1	
		2535	23	22.33	0	21.80	1	
		2502.5	23	22.59	0	21.56	1	
	12RB High (13)	2567.5	23	20.76	1	20.42	2	
		2535	23	21.25	1	20.39	2	
		2502.5	23	21.47	1	20.50	2	
	12RB Middle (6)	2567.5	23	21.28	1	20.38	2	
		2535	23	21.27	1	20.43	2	
		2502.5	23	21.41	1	20.53	2	
	12RB Low (0)	2567.5	23	21.10	1	20.34	2	
		2535	23	21.32	1	20.46	2	
		2502.5	23	21.23	1	20.56	2	
	25RB (0)	2567.5	23	21.29	1	20.29	2	
		2535	23	21.23	1	20.30	2	
		2502.5	23	21.30	1	20.40	2	
	10 MHz	1RB High (49)	2565	23	22.33	0	21.18	1
			2535	23	22.23	0	21.53	1
			2505	23	22.38	0	21.36	1
1RB Middle (24)		2565	23	22.17	0	21.67	1	
		2535	23	22.29	0	21.59	1	
		2505	23	22.41	0	21.39	1	
1RB Low (0)		2565	23	22.09	0	21.57	1	
		2535	23	22.37	0	21.68	1	
		2505	23	22.51	0	21.50	1	
25RB High (25)		2565	23	21.25	1	20.24	2	
		2535	23	21.21	1	20.26	2	
		2505	23	21.41	1	20.50	2	
25RB Middle (12)		2565	23	21.16	1	20.18	2	
		2535	23	21.24	1	20.29	2	
		2505	23	21.56	1	20.52	2	
25RB Low (0)		2565	23	21.10	1	20.13	2	
		2535	23	21.31	1	20.32	2	
		2505	23	21.62	1	20.57	2	
50RB (0)		2565	23	21.19	1	20.18	2	
		2535	23	21.26	1	20.27	2	
		2505	23	21.54	1	20.46	2	

15 MHz	1RB High (74)	2562.5	23	22.81	0	21.33	1
		2535	23	22.22	0	21.52	1
		2507.5	23	22.49	0	21.80	1
	1RB Middle (37)	2562.5	23	22.57	0	21.34	1
		2535	23	22.34	0	21.63	1
		2507.5	23	22.52	0	21.81	1
	1RB Low (0)	2562.5	23	22.57	0	21.47	1
		2535	23	22.39	0	21.75	1
		2507.5	23	22.56	0	21.92	1
	36RB High (38)	2562.5	23	21.74	1	21.00	2
		2535	23	21.27	1	20.31	2
		2507.5	23	21.37	1	20.41	2
	36RB Middle (19)	2562.5	23	21.64	1	20.76	2
		2535	23	21.33	1	20.33	2
		2507.5	23	21.56	1	20.47	2
	36RB Low (0)	2562.5	23	21.53	1	20.49	2
		2535	23	21.39	1	20.41	2
		2507.5	23	21.57	1	20.51	2
	75RB (0)	2562.5	23	21.81	1	20.61	2
		2535	23	21.31	1	20.31	2
		2507.5	23	21.69	1	20.49	2
20 MHz	1RB High (99)	2560	23	22.81	0	21.99	1
		2535	23	22.21	0	21.64	1
		2510	23	22.43	0	21.80	1
	1RB Middle (50)	2560	23	22.53	0	22.00	1
		2535	23	22.25	0	21.69	1
		2510	23	22.46	0	21.80	1
	1RB Low (0)	2560	23	22.50	0	21.96	1
		2535	23	22.51	0	21.97	1
		2510	23	22.75	0	21.94	1
	50RB High (50)	2560	23	21.62	1	20.64	2
		2535	23	21.22	1	20.23	2
		2510	23	21.43	1	20.40	2
	50RB Middle (25)	2560	23	21.47	1	20.49	2
		2535	23	21.27	1	20.28	2
		2510	23	21.43	1	20.43	2
	50RB Low (0)	2560	23	21.42	1	20.45	2
		2535	23	21.39	1	20.40	2
		2510	23	21.51	1	20.50	2
	100RB (0)	2560	23	21.50	1	20.53	2
		2535	23	21.27	1	20.27	2
		2510	23	21.45	1	20.46	2

Band 12								
Bandwidth (MHz)	RB allocation	Frequency (MHz)	Max. Target Power (dBm)	QPSK		16QAM		
	RB offset (Start RB)			Actual output power (dBm)	MPR	Actual output power (dBm)	MPR	
1.4 MHz	1RB High (5)	715.3	24	23.59	0	22.37	1	
		707.5	24	23.66	0	22.58	1	
		699.7	24	23.48	0	22.36	1	
	1RB Middle (3)	715.3	24	23.61	0	22.46	1	
		707.5	24	23.69	0	22.59	1	
		699.7	24	23.53	0	22.39	1	
	1RB Low (0)	715.3	24	23.62	0	22.40	1	
		707.5	24	23.68	0	22.55	1	
		699.7	24	23.43	0	22.32	1	
	3RB High (3)	715.3	24	23.49	0	22.45	1	
		707.5	24	23.69	0	22.81	1	
		699.7	24	23.44	0	22.39	1	
	3RB Middle (1)	715.3	24	23.42	0	22.39	1	
		707.5	24	23.67	0	22.78	1	
		699.7	24	23.38	0	22.31	1	
	3RB Low (0)	715.3	24	23.49	0	22.45	1	
		707.5	24	23.71	0	22.82	1	
		699.7	24	23.41	0	22.36	1	
	6RB (0)	715.3	24	22.49	1	21.45	2	
		707.5	24	22.71	1	21.82	2	
		699.7	24	22.41	1	21.35	2	
	3 MHz	1RB High (14)	714.5	24	23.46	0	22.15	1
			707.5	24	23.63	0	22.88	1
			700.5	24	23.53	0	22.34	1
		1RB Middle (7)	714.5	24	23.55	0	22.26	1
			707.5	24	23.68	0	22.91	1
			700.5	24	23.53	0	22.34	1
1RB Low (0)		714.5	24	23.50	0	22.26	1	
		707.5	24	23.66	0	22.89	1	
		700.5	24	23.42	0	22.24	1	
8RB High (7)		714.5	24	22.52	1	21.59	2	
		707.5	24	22.71	1	21.73	2	
		700.5	24	22.57	1	21.52	2	
8RB Middle (4)		714.5	24	22.58	1	21.58	2	
		707.5	24	22.70	1	21.74	2	
		700.5	24	22.56	1	21.53	2	
8RB Low (0)		714.5	24	22.58	1	21.62	2	
		707.5	24	22.72	1	21.73	2	
		700.5	24	22.52	1	21.47	2	
15RB (0)		714.5	24	22.50	1	21.52	2	
		707.5	24	22.63	1	21.65	2	
		700.5	24	22.47	1	21.40	2	

5 MHz	1RB High (24)	713.5	24	23.59	0	22.50	1	
		707.5	24	23.64	0	22.95	1	
		701.5	24	23.65	0	22.58	1	
	1RB Middle (12)	713.5	24	23.69	0	22.62	1	
		707.5	24	23.67	0	22.91	1	
		701.5	24	23.63	0	22.52	1	
	1RB Low (0)	713.5	24	23.68	0	22.63	1	
		707.5	24	23.70	0	22.99	1	
		701.5	24	23.56	0	22.37	1	
	12RB High (13)	713.5	24	22.52	1	21.59	2	
		707.5	24	22.67	1	21.81	2	
		701.5	24	22.60	1	21.63	2	
	12RB Middle (6)	713.5	24	22.56	1	21.63	2	
		707.5	24	22.69	1	21.82	2	
		701.5	24	22.57	1	21.59	2	
	12RB Low (0)	713.5	24	22.55	1	21.63	2	
		707.5	24	22.69	1	21.82	2	
		701.5	24	22.50	1	21.52	2	
	25RB (0)	713.5	24	22.51	1	21.51	2	
		707.5	24	22.65	1	21.72	2	
		701.5	24	22.49	1	21.44	2	
	10 MHz	1RB High (49)	711	24	23.69	0	22.83	1
			707.5	24	23.67	0	22.55	1
			704	24	23.71	0	22.50	1
1RB Middle (24)		711	24	23.65	0	22.87	1	
		707.5	24	23.61	0	22.57	1	
		704	24	23.63	0	22.40	1	
1RB Low (0)		711	24	23.76	0	22.99	1	
		707.5	24	23.65	0	22.51	1	
		704	24	23.56	0	22.21	1	
25RB High (25)		711	24	22.58	1	21.63	2	
		707.5	24	22.64	1	21.74	2	
		704	24	22.64	1	21.64	2	
25RB Middle (12)		711	24	22.62	1	21.64	2	
		707.5	24	22.65	1	21.73	2	
		704	24	22.61	1	21.62	2	
25RB Low (0)		711	24	22.64	1	21.68	2	
		707.5	24	22.63	1	21.71	2	
		704	24	22.51	1	21.53	2	
50RB (0)		711	24	22.62	1	21.65	2	
		707.5	24	22.64	1	21.65	2	
		704	24	22.58	1	21.57	2	

Band 13							
Bandwidth (MHz)	RB allocation RB offset (Start RB)	Frequency (MHz)	Max. Target Power (dBm)	QPSK		16QAM	
				Actual output power (dBm)	MPR	Actual output power (dBm)	MPR
5 MHz	1RB High (24)	784.5	24	23.54	0	22.74	1
		782	24	23.51	0	22.86	1
		779.5	24	23.58	0	22.48	1
	1RB Middle (12)	784.5	24	23.60	0	22.74	1
		782	24	23.62	0	22.92	1
		779.5	24	23.67	0	22.56	1
	1RB Low (0)	784.5	24	23.60	0	22.70	1
		782	24	23.70	0	22.98	1
		779.5	24	23.69	0	22.60	1
	12RB High (13)	784.5	24	22.47	1	21.76	2
		782	24	22.51	1	21.61	2
		779.5	24	22.54	1	21.57	2
	12RB Middle (6)	784.5	24	22.45	1	21.71	2
		782	24	22.54	1	21.65	2
		779.5	24	22.56	1	21.62	2
	12RB Low (0)	784.5	24	22.43	1	21.67	2
		782	24	22.56	1	21.66	2
		779.5	24	22.62	1	21.66	2
	25RB (0)	784.5	24	22.41	1	21.62	2
		782	24	22.47	1	21.54	2
		779.5	24	22.53	1	21.48	2
10 MHz	1RB High (49)	782	24	23.57	0	22.38	1
	1RB Middle (24)	782	24	23.62	0	22.30	1
	1RB Low (0)	782	24	23.69	0	22.43	1
	25RB High (25)	782	24	22.50	1	21.52	2
	25RB Middle (12)	782	24	22.49	1	21.49	2
	25RB Low (0)	782	24	22.54	1	21.55	2
	50RB (0)	782	24	22.52	1	21.50	2