

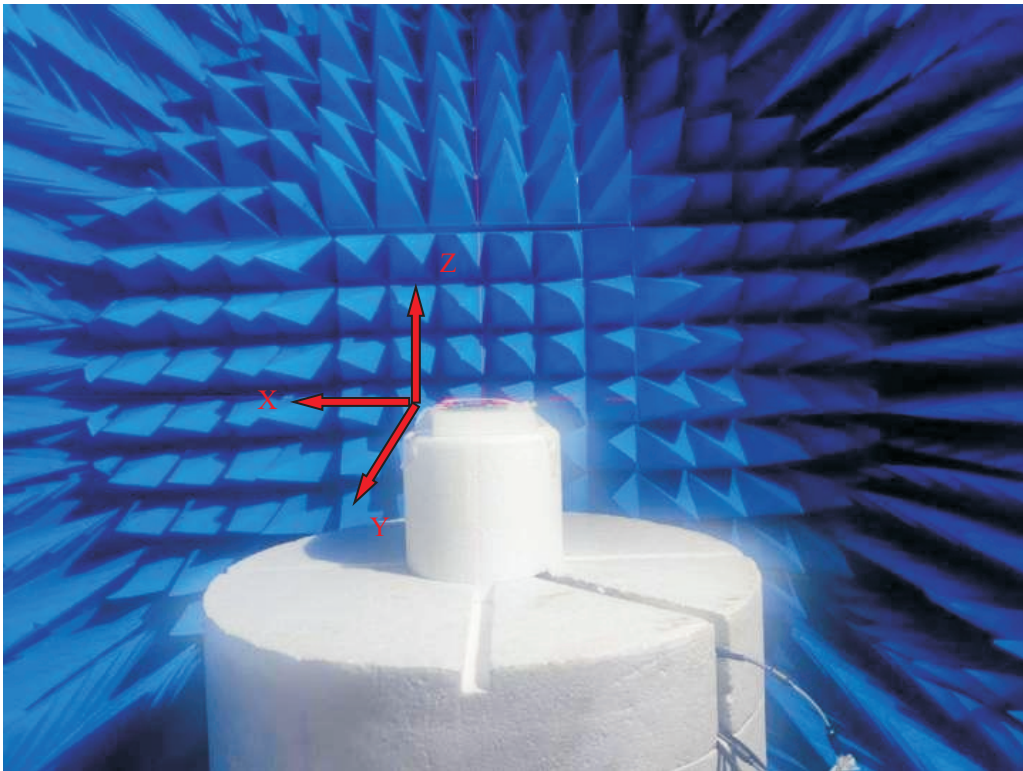
Shenzhen Jingda Electronic Technology Co., Ltd

Address: 519M, Mintai Building, No. 241 Minzhi Avenue,  
Minzhi Street, Longhua District, Shenzhen

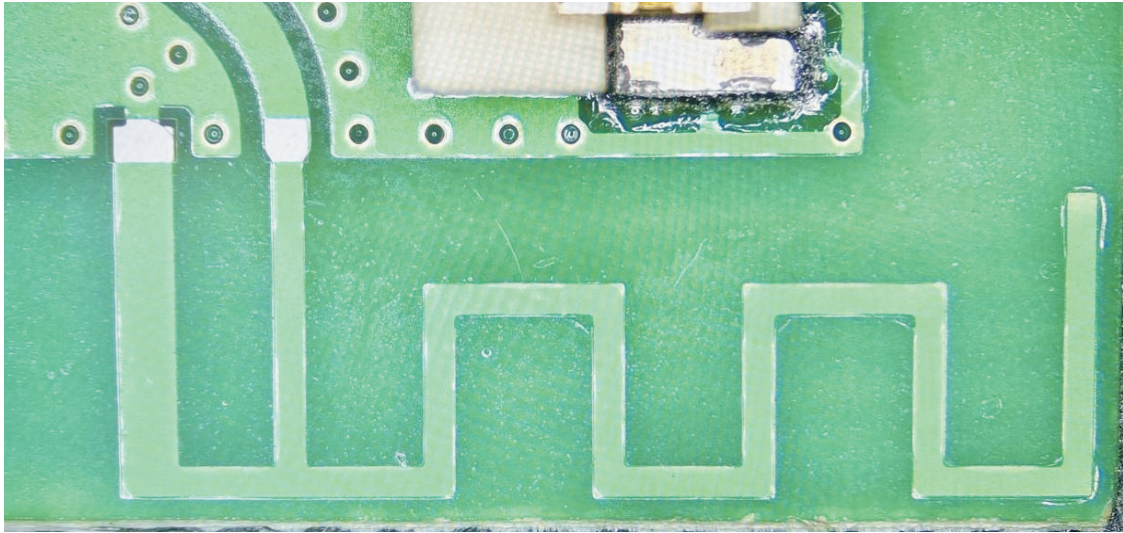
## 2.4G-2.48G frequency band on-board PIFA antenna test report

SPECIFICATIONS	
Frequency (MHz)	2400-2480
Peak Gain (dBi)	3.129
Average Gain (dBi)	>-3
VSWR	<3.3
Impedance ( $\Omega$ )	50 $\Omega$
Antenna Type	Plannar Inverted F Antenna on board
Polarization	Linear

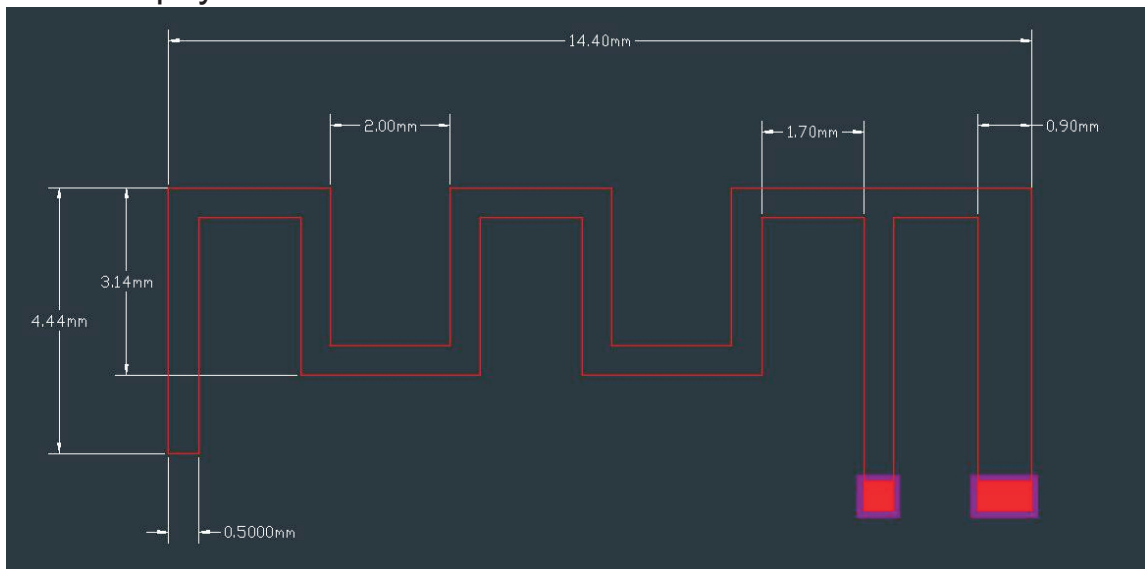
Testing environment: Zhongke Guoji darkroom testing system



## Antenna physical object

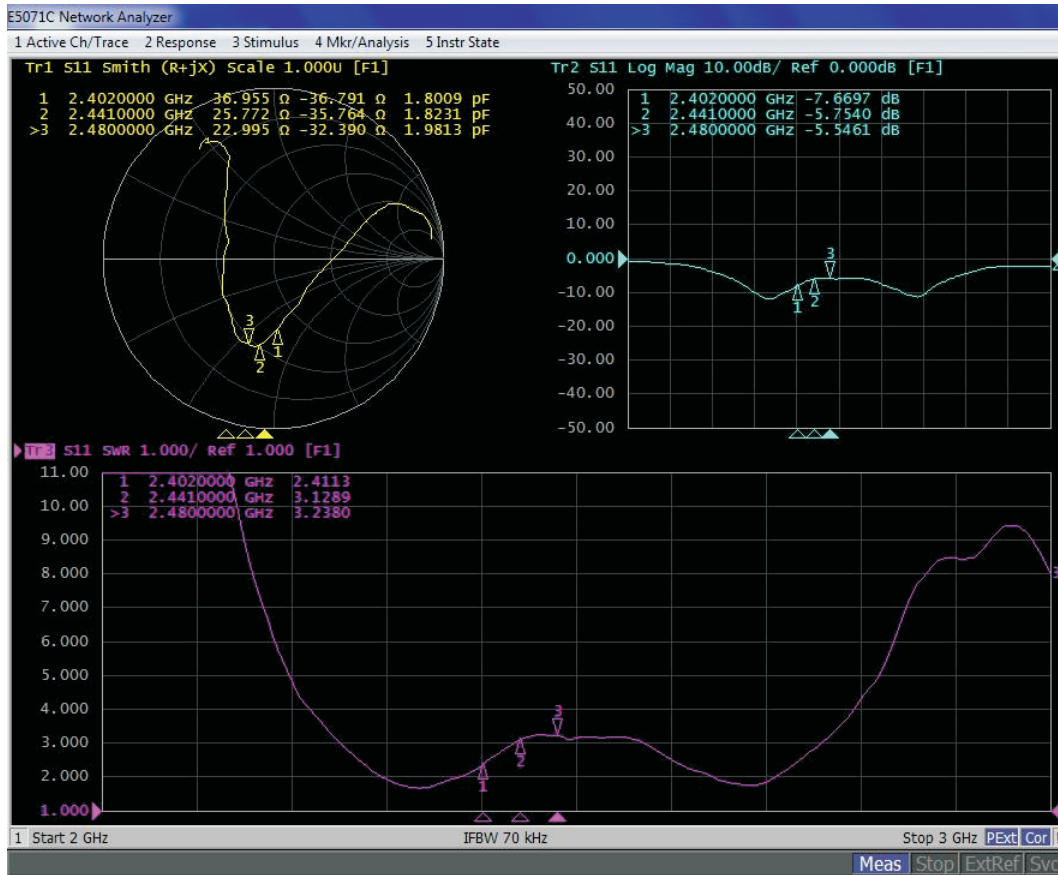


## Antenna physical size



Passive S parameters of antenna:

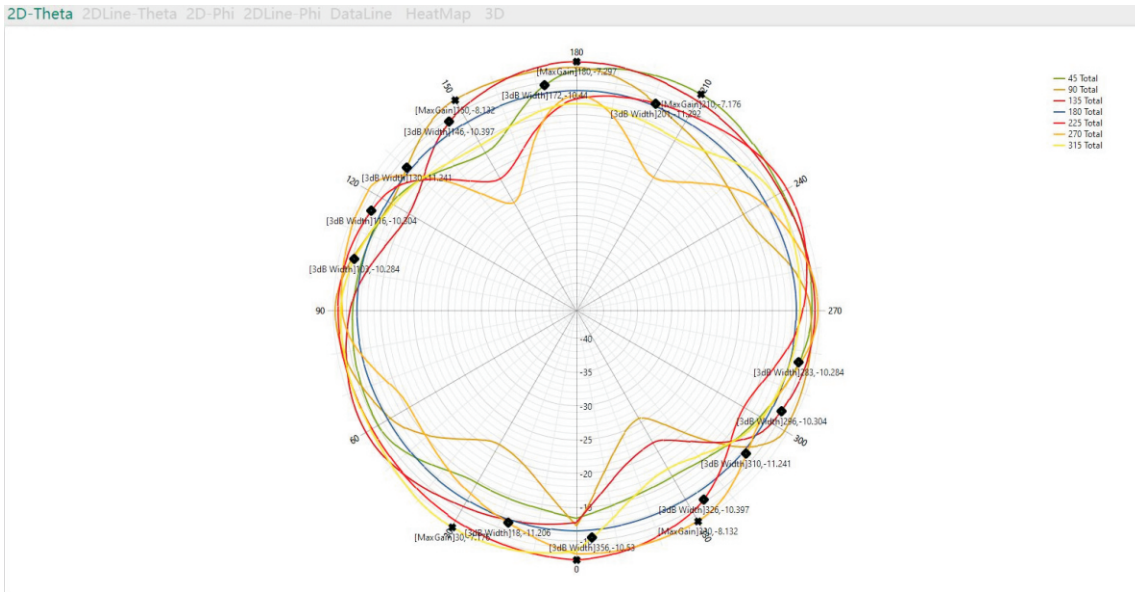
VSWR , Return Loss, And Smith circle diagram.



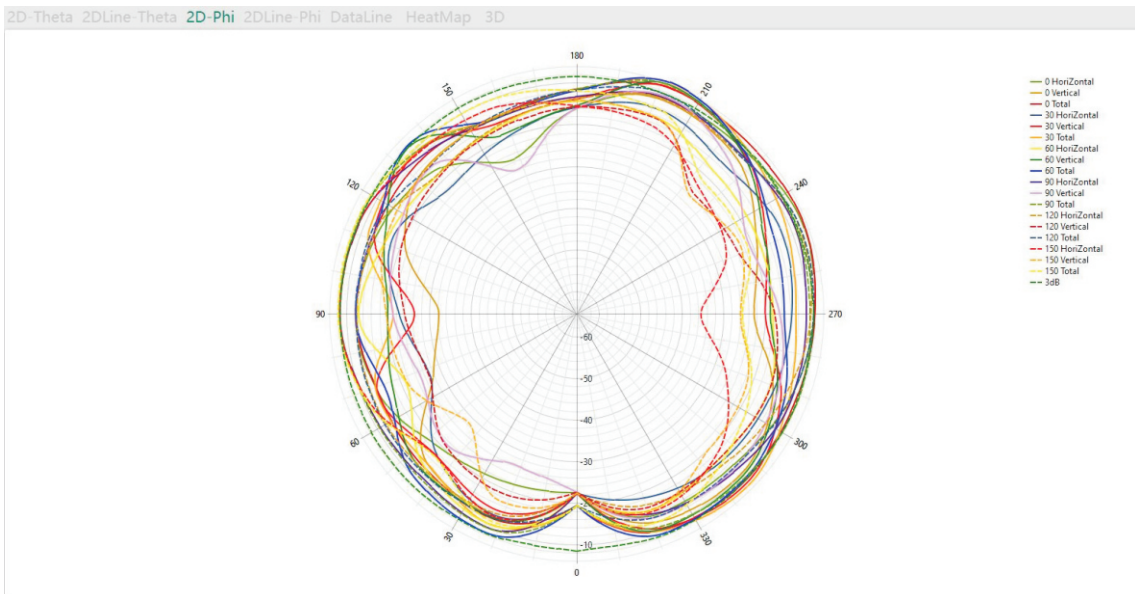
### Antenna efficiency and gain

Frequency (MHz)	Gain (dBi)	Efficiency (%)	AverageGain (dBi)	Efficiency (dB)
2400	3.129	75.167%	-1.462	-1.240
2410	2.490	65.407%	-2.287	-1.844
2420	2.625	64.758%	-2.202	-1.887
2430	2.363	59.870%	-2.590	-2.228
2440	2.019	56.522%	-2.976	-2.478
2450	2.338	57.708%	-2.751	-2.388
2460	2.750	62.465%	-2.504	-2.044
2470	2.395	57.499%	-2.796	-2.403
2480	3.030	63.308%	-2.339	-1.985
Average	2.571	62.523%	-2.434	-2.055
Peak	3.129	75.167%	-1.462	-1.240

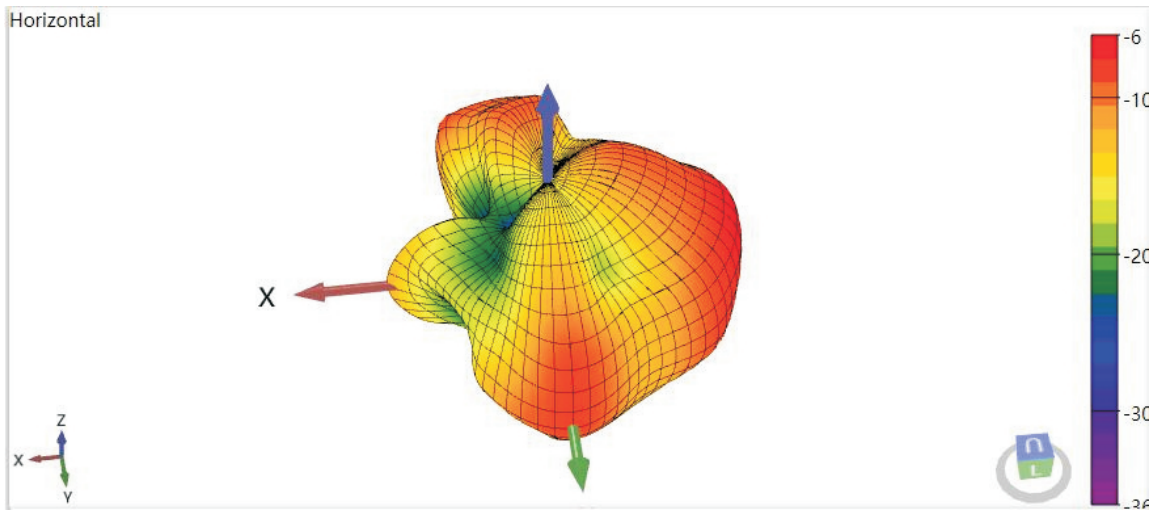
# Antenna 2440MHz 2D-Theta Pattern



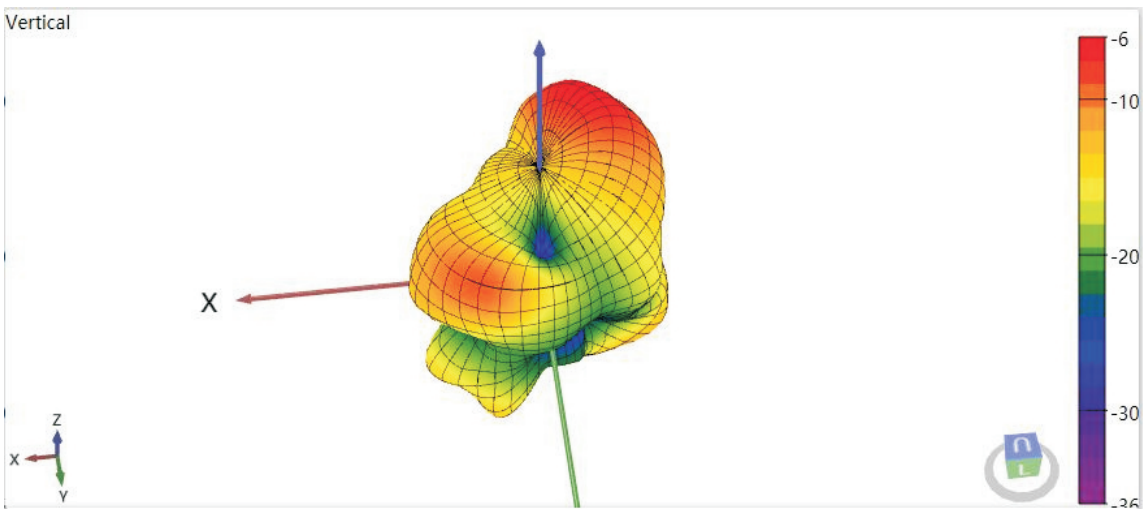
# Antenna 2440MHz 2D-Phi Pattern



### Antenna 2440MHz 3D-Horizontal Pattern



### Antenna 2440MHz 3D-Vertical Pattern



### 2440MHz 3D-Total Pattern

