

TCL
(Shenzhen R&D)

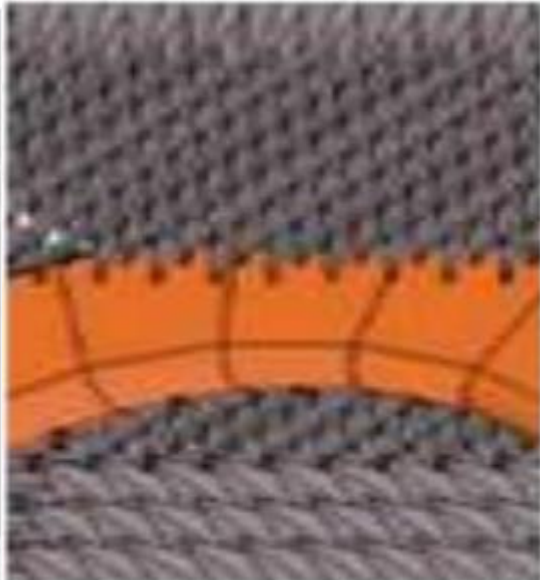
Project name: HH63AF

Product name: HH63AF- WIFI antenna

Material: PCB

Date: 2022.11.15

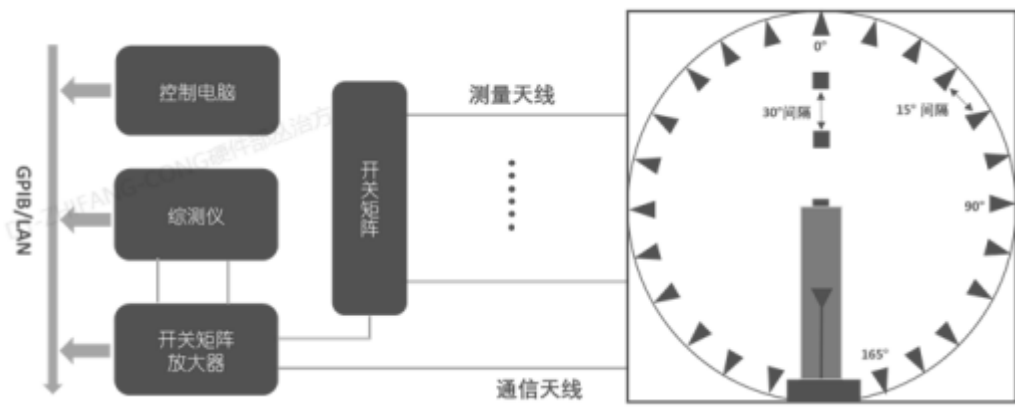
1. chamber room introduction and testing scope.



Our company has a number of OTA test darkrooms, ranging from 400MHz to 8.5ghz, which can provide passive test and active test (including OTA overall 2G,3G,4G,5GFR test, WiFi multi-mode test, GPS active test, Bluetooth active test, which can provide antenna gain and efficiency. 2D orientation and apple chart analysis and upper and lower hemisphere efficiency values, mutual disturbance correlation coefficient test items

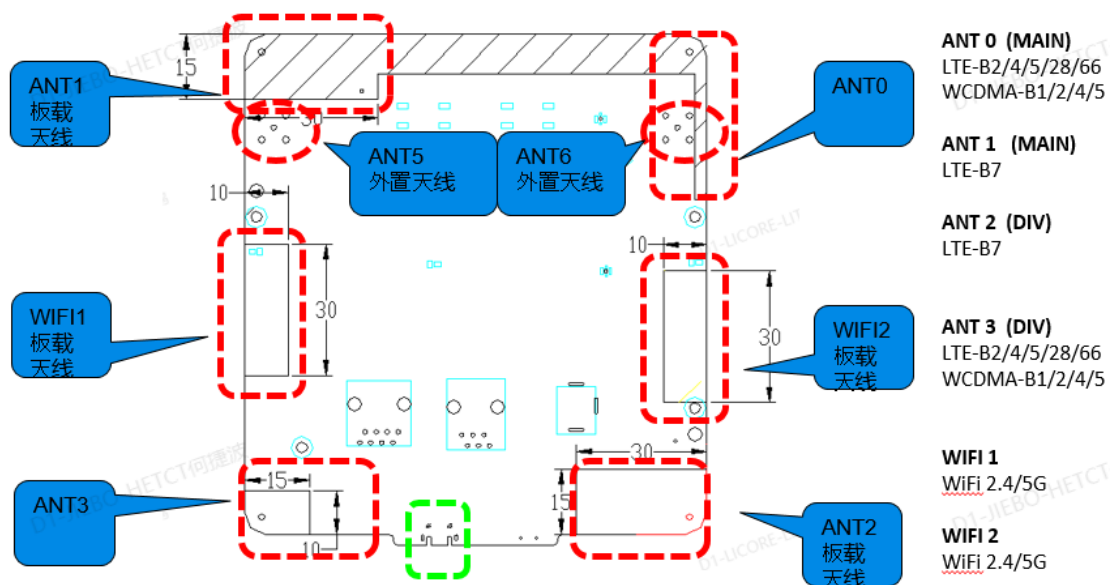
WIFI a/b/g/n/ac/ax

2: test system introduction:



The figure above shows the connection and control process between the darkroom of our company and the testing system and computer. The testing system has the characteristics of accurate, fast and simple testing The operation interface is simple and humanized

3: Test result Antenna placement



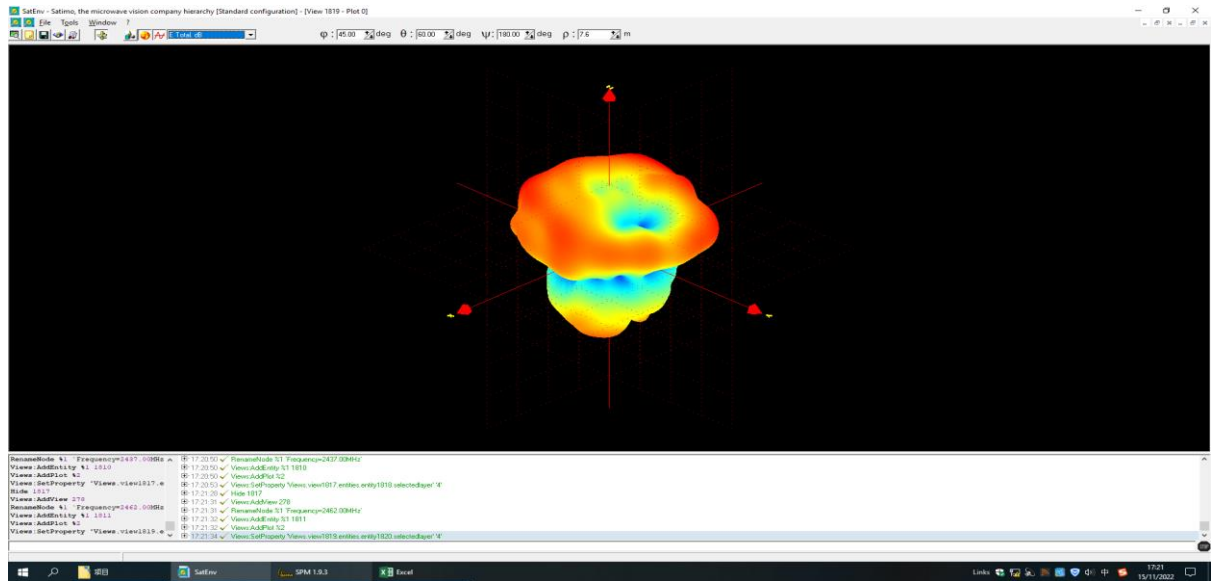
wifi-1 2.4G		
Fre(MHz)	AVER GAIN (dBi)	peak gain (dBi)
2400	-4.0	0.6
2410	-4.1	0.6
2420	-4.2	0.4
2430	-4.2	0.4
2440	-4.2	0.1
2450	-4.2	-0.1
2460	-4.1	-0.4
2470	-4.0	-0.8
2480	-4.0	-0.5
2490	-3.9	-0.4
2500	-4.0	-0.5

wifi-1 5G		
Fre(MHz)	AVER GAIN (dBi)	peak gain (dBi)
5150	-3.4	-1.2
5200	-3.2	-1.3
5250	-4.1	-1.2
5300	-4.1	-1.3
5350	-3.8	-1.4
5400	-3.5	-1.5
5450	-3.6	-1.4
5500	-3.8	-1.3
5550	-3.1	-1.6
5600	-3.2	-1.4
5650	-3.8	-1.3
5700	-5.0	-1.5
5750	-4.4	-1.3
5800	-4.6	-1.3
5850	-4.4	-1.4

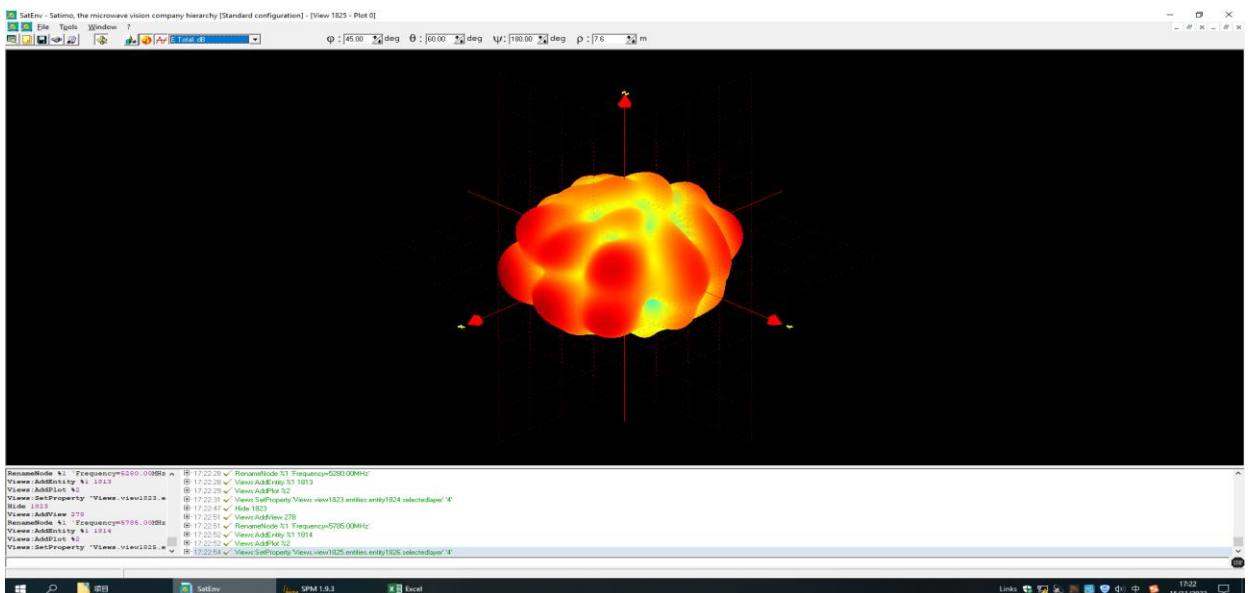
wifi-2 2.4G		
Fre(MHz)	AVER GAIN (dBi)	peak gain (dBi)
2400	-3.8	0.0
2410	-3.6	0.5
2420	-3.5	1.0
2430	-3.4	1.2
2440	-3.2	1.1
2450	-3.1	1.2
2460	-3.0	1.1
2470	-2.9	1.0
2480	-2.9	1.0
2490	-2.9	1.1
2500	-3.0	1.1

wifi-2 5G		
Fre(MHz)	AVER GAIN (dBi)	peak gain (dBi)
5150	-3.3	1.3
5200	-3.2	1.2
5250	-3.5	1.0
5300	-3.8	0.5
5350	-4.1	1.1
5400	-4.6	0.5
5450	-4.3	0.2
5500	-4.2	1.0
5550	-3.9	1.3
5600	-3.1	1.2
5650	-3.6	1.3
5700	-3.3	1.1
5750	-3.1	1.2
5800	-3.0	0.9
5850	-3.7	0.5

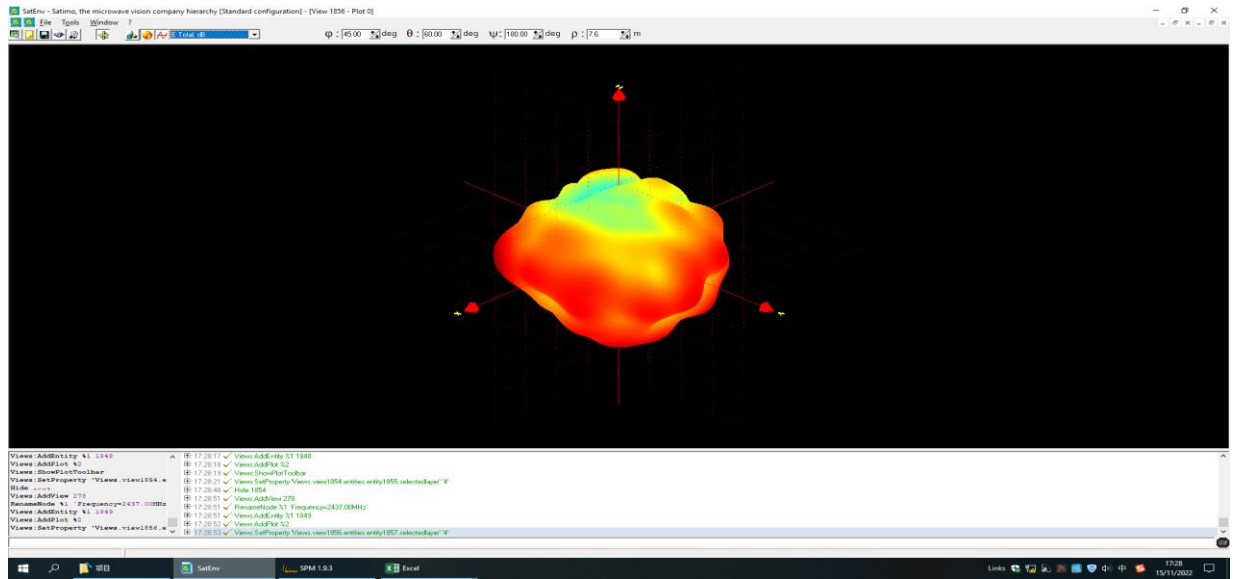
3D Pattern ANT 1_ 2.4G (Frequency=2450MHz)



3D Pattern ANT 1_ 5G (Frequency=5550MHz)



3D Pattern ANT2_ 2.4G (Frequency=2450MHz)



3D Pattern ANT2_ 5G (Frequency=5550MHz)

