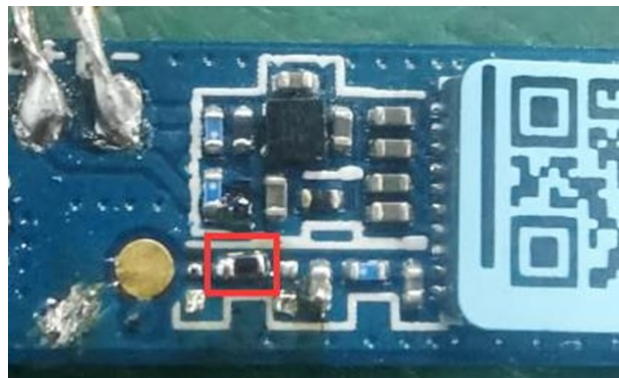
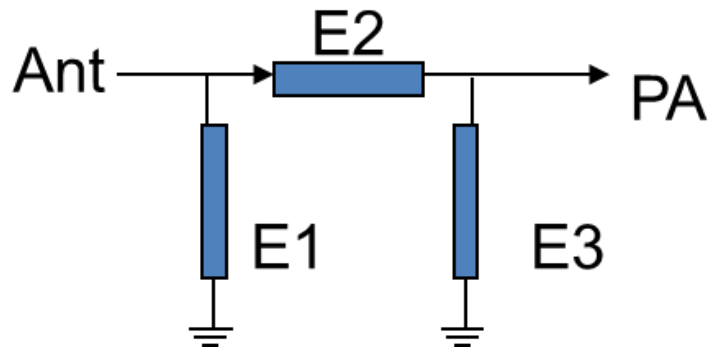




四： Matching Circuit

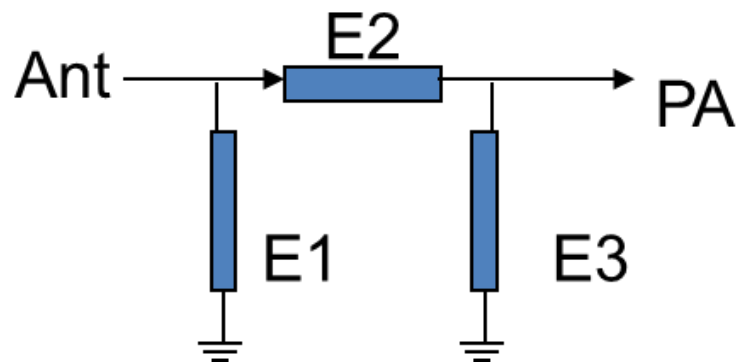
Matching Circuit for left earbud:

Element	Value
E1	N/A
E2	0Ω
E3	N/A

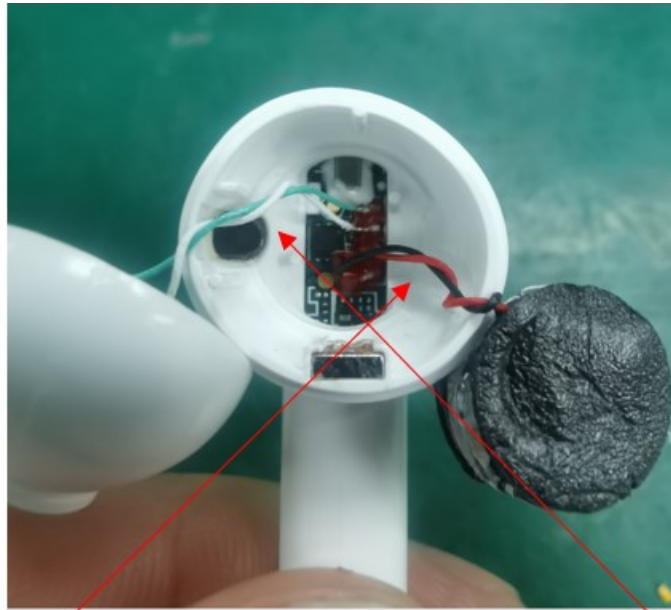


Matching Circuit for right earbud :

Element	Value
E1	N/A
E2	0Ω
E3	N/A

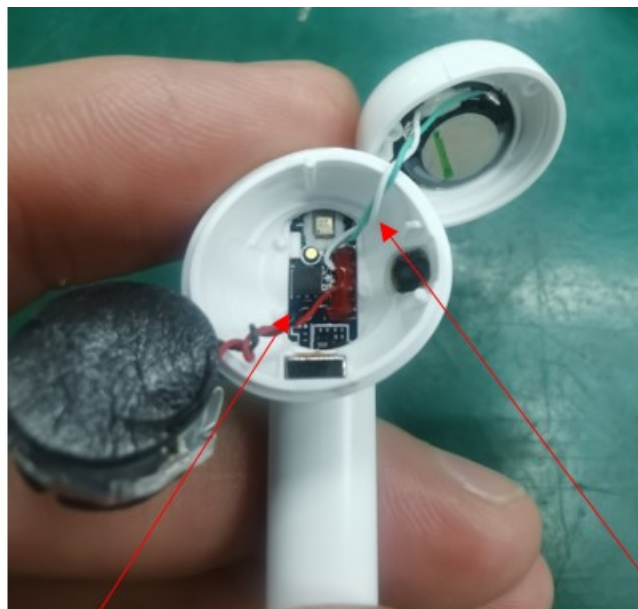


## 五: Assembly requirements



Control the battery wire length of the left ear to 25mm, wrap the battery wire with 4-5 turns, and place the battery pole ear upward

The wire length of the battery in the left ear should be controlled as 28mm, and the winding treatment should be done well, and the winding times should be 3-4 turns



Control the battery wire length of the right ear to 25mm, wrap the battery wire with 4-5 turns

Control the battery wire length of the right ear to 28mm, wrap the battery wire with 3-4 turns