

Declaration of changes from Initial (R228t) to Variant (MW63AF)

● SOFTWARE MODIFICATIONS:

- Protocol Stack changes: NO
- MMS/STK/USAT/USIM changes: NO
- DM/SUPL/VT/FUMO/SWP/HCI: NO
- Other changes detailed: NO

● HARDWARE MODIFICATIONS:

- Baseband changes: **NO**
- Band changes: **Yes**

Product	GSM	UMTS	LTE
R228t	900/1800	Band 1,3,8	Band 1/3/7/8/20/28/32/38/40/41
MW63AF	NO	Band 1, 2, 4, 5, 8	Band 2/4/5/7/28/66

- Antenna changes: **NO**
- PCB Layout changes: **YES**
- Main components changes:

	Base Band	Transceiver	ASM	Power Amplifier	Tx SAW Filter	Rx SAW Filter (SAW Duplexer)
UMTS FDD I	NO	NO	NO	NO	NO	NO
UMTS FDD II	NO	NO	NO	NO	New	New
UMTS FDD IV	NO	NO	NO	NO	New	New
UMTS FDD V	NO	NO	NO	NO	New	New
UMTS FDD VIII	NO	NO	NO	NO	NO	NO

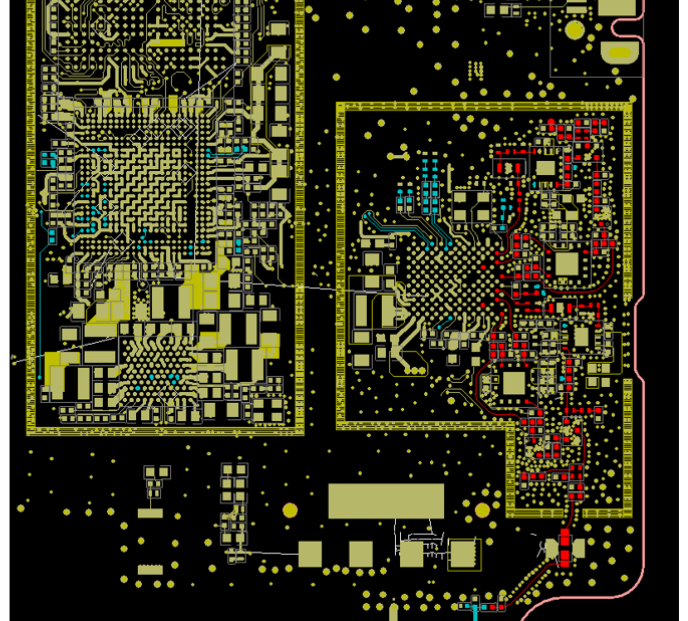
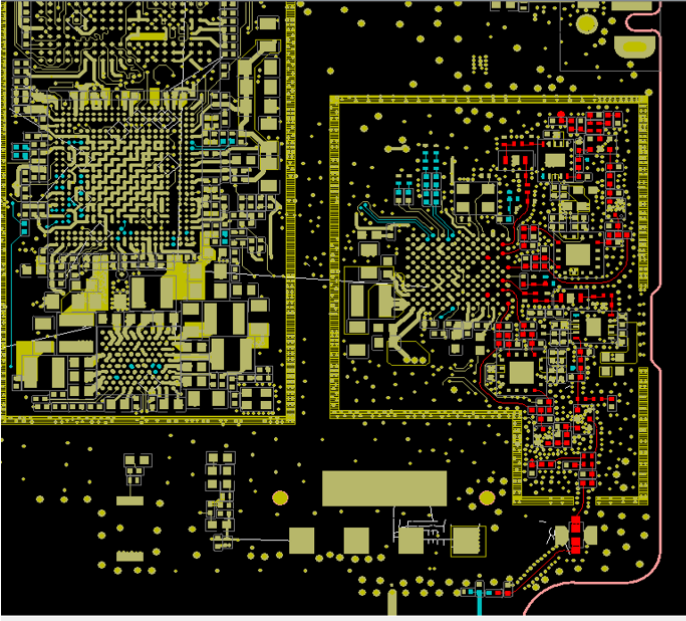
	Base Band	Transceiver	ASM	Power Amplifier	Tx SAW Filter	Rx SAW Filter (SAW Duplexer)
LTE B2	NO	NO	NO	NO	New	New
LTE B4	NO	NO	NO	NO	New	New
LTE B5	NO	NO	NO	NO	New	New
LTE B7	NO	NO	NO	NO	NO	NO
LTE B28	NO	NO	NO	NO	NO	NO
LTE B66	NO	NO	NO	NO	New	New

	Antenna	AP	MODEM	Transceiver	Balun	Band pass filter	diplexer
WiFi	NO	NO	NO	NO	NO	NO	NO

- WiFi changes: MW63AF&R228T WIFI non-change, below pictures red part are circuit diagram for WiFi, MW63AF and R228t WiFi are unchanged.

MW63AF

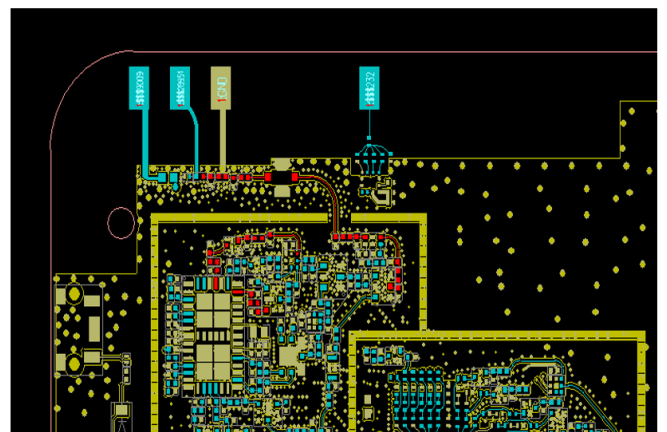
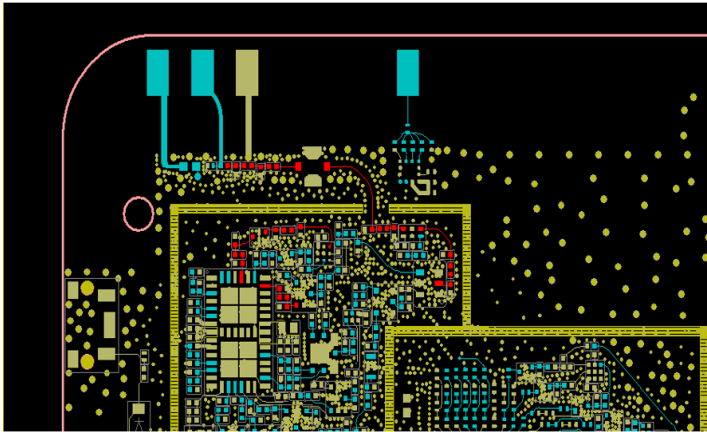
R228t



LTE B7: Below pictures red part are circuit diagram for LTE B7, MW63AF and R228t B7 are unchanged.

MW63AF B7

R228t B7



➤ Other components changes: NO

➤ Other changes detailed: No

Accessories	R228t	MW63AF	Remark
Charger	UC11EU UC11US	UC11US	
Battery	TLi021F7 TLi021FA	TLi021F7 TLi021FA	
USB cable	CDA0000177C1	CDA0000167C1 CDB0000082C1	

➤ **MECHANICAL MODIFICATIONS:**

- Use new metal front/back cover or keypad: NO
- Mechanical shell changes: NO
 - Distance of Ear reference point to bottom of handset: NO
 - Other trinkets to change the surface of handset: NO
- Other changes detailed: R228t FCC ID is **2ACCJB182**, MW63AF FCC ID is **2ACCJB188**

APPROVED BY:

Project Manager: Hui-Zhu

Signature:
Date:2022.12.7