

WAG-B.01.L.0806 Specification

1. Explanation of part number :

WAG - B - 01 - L - 0806
(1) (2) (3) (4) (5)

(1) Product Type : Wireless Antenna

(2) Material : FPC

(3) Frequency : 791-960Mhz, 1805-2170, 2500-2690 Mhz

(4) Coaxial Cable Type : 00

(5) Suffix : 053

2. Electrical Specification :

2-1. Frequency Band:

Frequency Band	MHz
LTE	791-960Mhz, 1805-2170, 2500-2690 Mhz

2-2. Impedance

50 ohm nominal

UNLESS OTHER SPECIFIED TOLERANCES ON :

X=±2 X.X=±0.1 X.XX=±0.05

ANGLES=±

HOLEDIA=±

浙江海通通讯电子股份有限公司

SCALE :

UNIT : mm

DRAWN BY : 程国富

CHECKED BY : 于超群

DESIGNED BY : 于超群

APPROVED BY : 夏彪

THIS DRAWINGS AND SPECIFICATIONS ARE THE PROPERTY OF INPAQ TECHNOLOGY CO.,LTD.AND SHALL NOT BE REPRODUCED OR USED AS THE BASIS FOR THE MANUFACTURE OR SALE OF APPARATUS OR DEVICES WITHOUT PERMISSION

TITLE : WAG-F-LTE12-00-053 Specification

DOCUMENT
NO.

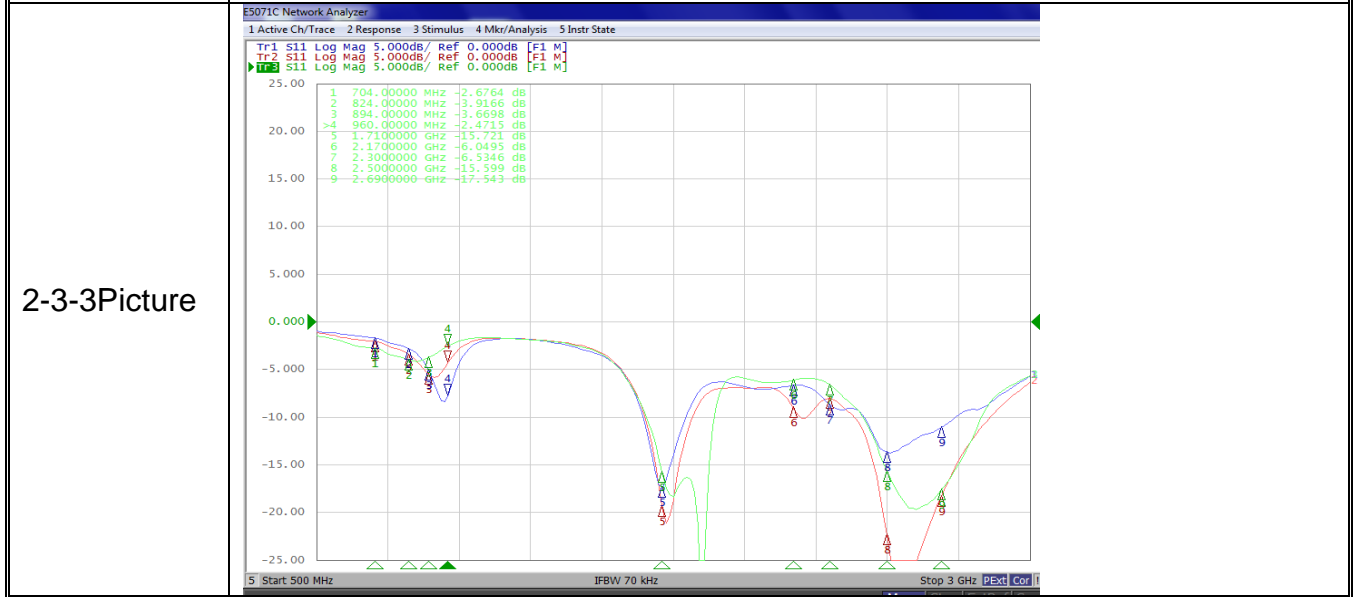
PAGE REV.
A0

2-3. VSWR ,Efficiency ,Matching and Active Data :

2-3.1 VSWR:

Frequency Band	700	960	1710	2170	2500	2690
2-3-1. Typical Value:	-2.6	-7.1	-21.3	-10	-23.4	-18.7

2-3-2 Measuring Method	<ol style="list-style-type: none"> 1. A 50Ω coaxial cable is connected to the fpcb antenna. Then this cable is connected to a network analyzer to measure the VSWR. 2. Keeping this jig away from metal at least 20 cm.
------------------------	---



2-4. Measure and Chamber

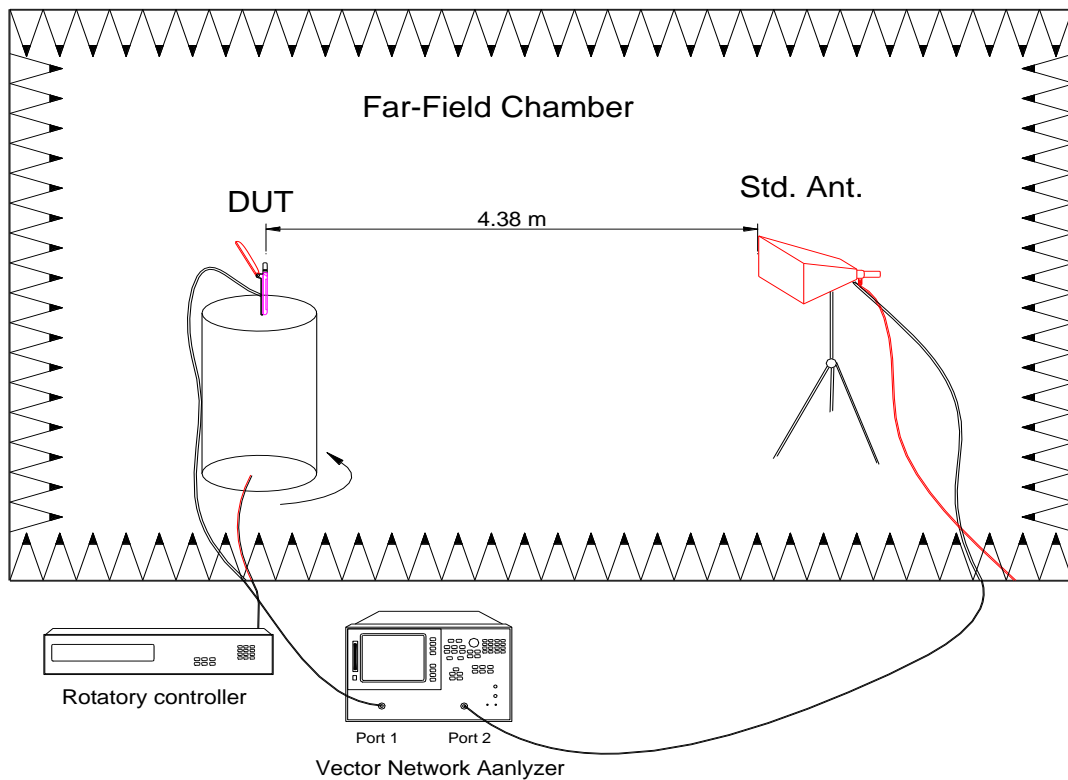
2-4-1 Measure method

1. Using a low loss coaxial cable to link a standard handset jig

UNLESS OTHER SPECIFIED TOLERANCES ON : X=±2 X.X=±0.1 X.XX=±0.05 ANGLES=± HOLEDIA=±		浙江海通通讯电子股份有限公司	
SCALE :	UNIT : mm	THIS DRAWINGS AND SPECIFICATIONS ARE THE PROPERTY OF INPAQ TECHNOLOGY CO.,LTD.AND SHALL NOT BE REPRODUCED OR USED AS THE BASIS FOR THE MANUFACTURE OR SALE OF APPARATUS OR DEVICES WITHOUT PERMISSION	
DRAWN BY : 程国富	CHECKED BY : 于超群		
DESIGNED BY : 于超群	APPROVED BY : 夏彪		
TITLE : <u>WAG-F-LTE12-00-053</u> Specification		DOCUMENT NO.	PAGE REV. A0

2. Fixed this handset jig on chamber's rotator plane
3. Linking jig into network analyzer port and using a probing horn antenna to collect data.
4. Using another standard gain horn antenna to calibrated those data

2-4-2 Chamber definition



1. An anechoic chamber (8mx4mx3.5m) which satisfied far-field condition was applied to avoid multi-path effect
2. The quiet room region is 40cmx40cmx40cm at the center of rotator
3. The distance between DUT and standard antenna is 4.38 m
4. Probing antenna (9120D horn antenna) and standard gain horn antenna (BBHA9120 LPF 700MHz ~6GHz)

UNLESS OTHER SPECIFIED TOLERANCES ON :

X=±2 X.X=±0.1 X.XX=±0.05

ANGLES=±

HOLEDIA=±

SCALE :

UNIT : mm

DRAWN BY : 程国富

CHECKED BY : 于超群

DESIGNED BY : 于超群

APPROVED BY : 夏彪

TITLE : WAG-F-LTE12-00-053 Specification

DOCUMENT
NO.

PAGE REV.
A0

浙江海通通讯电子股份有限公司

THIS DRAWINGS AND SPECIFICATIONS ARE THE PROPERTY OF INPAQ TECHNOLOGY CO.,LTD.AND SHALL NOT BE REPRODUCED OR USED AS THE BASIS FOR THE MANUFACTURE OR SALE OF APPARATUS OR DEVICES WITHOUT PERMISSION

2-4-3 Antenna OTA

B1	19.25	
	19.01	
	19.2	-94.1
B2	19.1	
	18.93	
	18.41	-94.64
B3	19.71	
	19.65	
	20.27	-94.81
B4	19.51	
	19.49	
	19.58	-94.41
B5	17.53	
	18.62	
	17.53	-92.49
B7	18.73	
	18.93	
	19.27	-95.83
B8	17.81	
	18.29	
	18	-93.97
B12	17.85	
	18.73	
	17.9	-95.39
B13	18.8	
	18.89	
	18.3	-93.99
B17	18.65	
	18.45	
	18.08	-93.33
B26	17.66	
	17.54	
	16.67	-94.75
B28	18.62	
	19.42	
	18.03	-92.99

UNLESS OTHER SPECIFIED TOLERANCES ON :

X=±2 X.X=±0.1 X.XX=±0.05

ANGLES=±

HOLEDIA=±

浙江海通通讯电子股份有限公司

SCALE :

UNIT : mm

DRAWN BY : 程国富

CHECKED BY : 于超群

DESIGNED BY : 于超群

APPROVED BY : 夏彪

THIS DRAWINGS AND SPECIFICATIONS ARE THE PROPERTY OF INPAQ TECHNOLOGY CO.,LTD.AND SHALL NOT BE REPRODUCED OR USED AS THE BASIS FOR THE MANUFACTURE OR SALE OF APPARATUS OR DEVICES WITHOUT PERMISSION

TITLE : **WAG-F-LTE12-00-053 Specification**

DOCUMENT
NO.

PAGE REV.
A0

B38 (10M)	18.7	
	19.83	
	19.49	-95.59
B40 (10M)	18.47	
	18.97	
	18.16	-91.5

850	25.71	
	26.65	
	27.33	-102.14
900	25.79	
	27.14	
	27.6	-103.49
1800	25.86	
	26.29	
	26.73	-104.43
1900	26.85	
	27.33	
	26.8	-105.62
W1	19.56	
	19.06	
	19.47	-105.89
W2	20.49	
	20.47	
	19.75	-107.47
W4	20.09	
	20.07	
	20.17	-107.34
W5	17.48	
	17.98	
	17.15	-105.48
W8	17.15	
	17.88	
	17.82	-106.93

UNLESS OTHER SPECIFIED TOLERANCES ON :

X=±2 X.X=±0.1 X.XX=±0.05

ANGLES=±

HOLEDIA=±

浙江海通通讯电子股份有限公司

SCALE :

UNIT : mm

DRAWN BY : 程国富

CHECKED BY : 于超群

DESIGNED BY : 于超群

APPROVED BY : 夏彪

THIS DRAWINGS AND SPECIFICATIONS ARE THE PROPERTY OF INPAQ TECHNOLOGY CO.,LTD.AND SHALL NOT BE REPRODUCED OR USED AS THE BASIS FOR THE MANUFACTURE OR SALE OF APPARATUS OR DEVICES WITHOUT PERMISSION

TITLE : **WAG-F-LTE12-00-053 Specification**

DOCUMENT NO.

PAGE REV.
A0

2-4-3 Antenna Efficiency

Frequency	Efficiency	Efficiency . dB	Gain . dBi
880000000	10%	-10.17	-6.72
890000000	11%	-9.67	-6.28
900000000	12%	-9.12	-5.66
910000000	14%	-8.58	-4.60
920000000	16%	-8.09	-4.61
930000000	17%	-7.63	-4.96
940000000	19%	-7.25	-4.64
950000000	20%	-6.95	-5.01
960000000	20%	-6.89	-4.75
1710000000	44%	-3.59	0.05
1720000000	44%	-3.57	0.04
1730000000	44%	-3.58	-0.14
1740000000	44%	-3.56	-0.24
1750000000	45%	-3.48	0.10
1760000000	46%	-3.38	0.06
1770000000	46%	-3.33	0.09
1780000000	47%	-3.29	0.10
1790000000	47%	-3.29	0.38
1800000000	46%	-3.40	0.13
1810000000	45%	-3.44	-0.04
1820000000	46%	-3.37	0.05
1830000000	46%	-3.35	0.35
1840000000	46%	-3.36	0.34
1850000000	45%	-3.45	0.35
1860000000	43%	-3.63	0.34
1870000000	42%	-3.80	0.38
1880000000	42%	-3.80	0.35
1890000000	42%	-3.78	0.39
1900000000	42%	-3.72	0.56
1910000000	43%	-3.67	0.54
1920000000	42%	-3.79	0.40
1930000000	40%	-3.94	-0.05
1940000000	40%	-3.97	-0.06
1950000000	40%	-4.00	-0.06

UNLESS OTHER SPECIFIED TOLERANCES ON :

X=±2 X.X=±0.1 X.XX=±0.05

ANGLES=±

HOLEDIA=±

浙江海通通讯电子股份有限公司

SCALE :

UNIT : mm

DRAWN BY : 程国富

CHECKED BY : 于超群

DESIGNED BY : 于超群

APPROVED BY : 夏彪

THIS DRAWINGS AND SPECIFICATIONS ARE THE PROPERTY OF INPAQ TECHNOLOGY CO.,LTD.AND SHALL NOT BE REPRODUCED OR USED AS THE BASIS FOR THE MANUFACTURE OR SALE OF APPARATUS OR DEVICES WITHOUT PERMISSION

TITLE : WAG-F-LTE12-00-053 Specification

DOCUMENT NO.

PAGE REV.
A0

1960000000	39%	-4.08	-0.08
1970000000	39%	-4.04	-0.15
1980000000	40%	-4.00	-0.12
1990000000	38%	-4.16	-0.09
2000000000	37%	-4.28	-0.08
2010000000	36%	-4.40	-0.06
2020000000	36%	-4.49	-0.18
2030000000	35%	-4.51	-0.13
2040000000	35%	-4.55	-0.15
2050000000	33%	-4.80	-0.19
2060000000	31%	-5.16	-0.34
2070000000	28%	-5.47	-1.01
2080000000	27%	-5.64	-1.00
2090000000	27%	-5.72	-0.74
2100000000	26%	-5.79	-0.46
2110000000	26%	-5.89	-0.43
2120000000	25%	-6.10	-0.80
2130000000	24%	-6.24	-0.77
2140000000	25%	-6.08	-0.68
2150000000	26%	-5.86	-0.89
2160000000	28%	-5.59	-0.47
2170000000	28%	-5.47	-0.11
2180000000	28%	-5.55	-0.26
2190000000	27%	-5.75	-0.67
2200000000	26%	-5.81	-0.97
2300000000	33%	-4.87	-0.24
2310000000	33%	-4.77	-0.25
2320000000	34%	-4.71	-0.23
2330000000	33%	-4.79	-0.25
2340000000	33%	-4.80	-0.26
2350000000	33%	-4.78	-0.48
2360000000	35%	-4.61	-0.53
2370000000	35%	-4.55	-0.56
2380000000	34%	-4.63	-0.46
2390000000	35%	-4.61	-0.24
2400000000	34%	-4.65	-0.41
2500000000	31%	-5.11	-1.28
2510000000	31%	-5.10	-1.65
2520000000	32%	-5.00	-1.61
2530000000	31%	-5.05	-1.56
2540000000	30%	-5.17	-1.65
2550000000	31%	-5.14	-1.40

UNLESS OTHER SPECIFIED TOLERANCES ON :

X=±2 X.X=±0.1 X.XX=±0.05

ANGLES=±

HOLEDIA=±

SCALE :

UNIT : mm

DRAWN BY : 程国富

CHECKED BY : 于超群

DESIGNED BY : 于超群

APPROVED BY : 夏彪

TITLE : WAG-F-LTE12-00-053 Specification

DOCUMENT
NO.

PAGE REV.
A0

浙江海通通讯电子股份有限公司

THIS DRAWINGS AND SPECIFICATIONS ARE THE PROPERTY OF INPAQ TECHNOLOGY CO.,LTD.AND SHALL NOT BE REPRODUCED OR USED AS THE BASIS FOR THE MANUFACTURE OR SALE OF APPARATUS OR DEVICES WITHOUT PERMISSION

2560000000	30%	-5.22	-1.33
2570000000	31%	-5.15	-1.27
2580000000	30%	-5.18	-1.28
2590000000	30%	-5.19	-1.27
2600000000	30%	-5.16	-1.28
2610000000	31%	-5.09	-1.28
2620000000	32%	-5.00	-1.27
2630000000	31%	-5.02	-1.35
2640000000	32%	-5.01	-1.87
2650000000	32%	-5.01	-1.88
2660000000	30%	-5.22	-1.35
2670000000	29%	-5.34	-1.34
2680000000	29%	-5.36	-1.31
2690000000	29%	-5.38	-1.29

Frequency	Efficiency	Efficiency . dB	Gain . dBi
790000000	13%	-8.90	-6.21
800000000	14%	-8.60	-6.04
810000000	15%	-8.38	-5.60
820000000	15%	-8.28	-4.80
830000000	15%	-8.11	-5.16
840000000	16%	-7.96	-4.70
850000000	17%	-7.76	-4.88
860000000	18%	-7.55	-4.71
870000000	18%	-7.41	-4.73
880000000	18%	-7.44	-4.70
890000000	17%	-7.69	-4.73

Frequency	Efficiency	Efficiency . dB	Gain . dBi
700000000	12%	-9.28	-6.63
710000000	12%	-9.36	-6.60
720000000	12%	-9.39	-6.90
730000000	12%	-9.30	-6.71
740000000	12%	-9.16	-6.60
750000000	12%	-9.06	-6.50
760000000	12%	-9.14	-6.50
770000000	12%	-9.20	-6.54
780000000	12%	-9.38	-6.50
790000000	11%	-9.54	-6.75

UNLESS OTHER SPECIFIED TOLERANCES ON :

X=±2 X.X=±0.1 X.XX=±0.05

ANGLES=±

HOLEDIA=±

浙江海通通讯电子股份有限公司

SCALE :

UNIT : mm

DRAWN BY : 程国富

CHECKED BY : 于超群

DESIGNED BY : 于超群

APPROVED BY : 夏彪

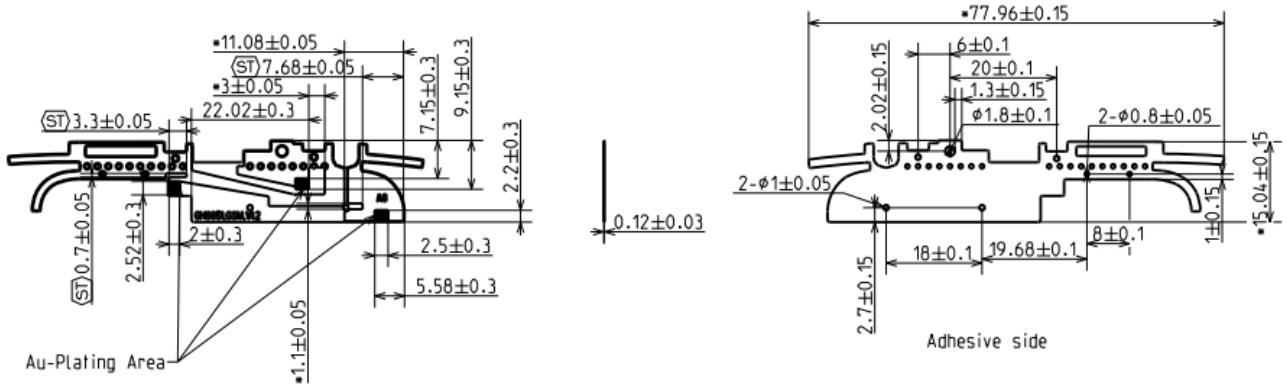
THIS DRAWINGS AND SPECIFICATIONS ARE THE PROPERTY OF INPAQ TECHNOLOGY CO.,LTD.AND SHALL NOT BE REPRODUCED OR USED AS THE BASIS FOR THE MANUFACTURE OR SALE OF APPARATUS OR DEVICES WITHOUT PERMISSION

TITLE : WAG-F-LTE12-00-053 Specification

DOCUMENT NO.

PAGE REV.
A0

3. Antenna Dimensions:



UNLESS OTHER SPECIFIED TOLERANCES ON :

X=±2 X.X=±0.1 X.XX=±0.05

ANGLES=±

HOLEDIA=±

SCALE :

UNIT : mm

DRAWN BY : 程国富

CHECKED BY : 于超群

DESIGNED BY : 于超群

APPROVED BY : 夏彪

TITLE : WAG-F-LTE12-00-053 Specification

DOCUMENT
NO.

PAGE REV.
A0

浙江海通通讯电子股份有限公司

THIS DRAWINGS AND SPECIFICATIONS ARE THE PROPERTY OF INPAQ TECHNOLOGY CO.,LTD.AND SHALL NOT BE REPRODUCED OR USED AS THE BASIS FOR THE MANUFACTURE OR SALE OF APPARATUS OR DEVICES WITHOUT PERMISSION