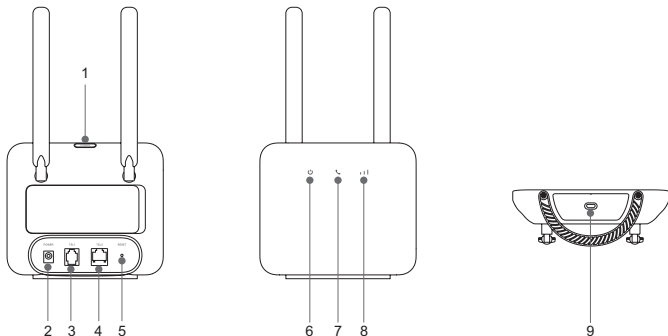


Quick Start Guide

HOME PHONE 42

TCL

Overview

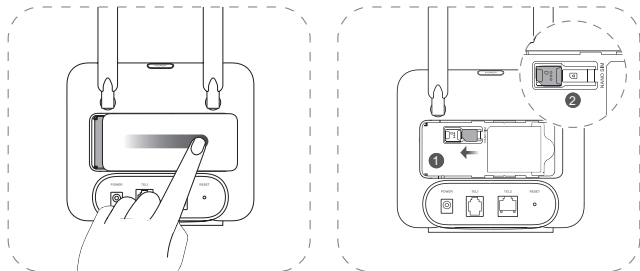


1. Power button	<ul style="list-style-type: none">• Press and hold for 3 seconds to power on or off your device.• Press and hold for 10 seconds to reboot your device.
2. Power connector	Connect to power with the included power adapter.
3. Telephone port 1	Connect a telephone to make or answer calls.
4. Telephone port 2	Connect a security system to alarm when a security problem arises.
5. Reset button	Use a paper clip to press the button for 3 seconds to reset your device to the default factory settings.

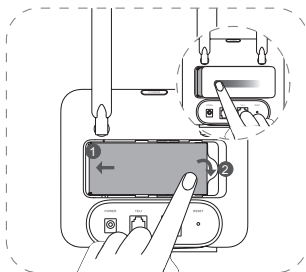
6. Power indicator	<ul style="list-style-type: none"> • Solid blue: The device is powered on. • Solid red: The device is in low power state; battery capacity 0%–20% • Off: The device is powered off.
7. Telephone indicator	<ul style="list-style-type: none"> • Solid blue: Available for a call • Blinking blue: On a call • Off: Not available for a call
8. Signal indicator	<ul style="list-style-type: none"> • 1 bar: Weak signal strength • 2 bars: Good signal strength • 3 bars: Excellent signal strength • Off: No signal
9. Micro USB 2.0 slot	Dedicated slot for upgrading software.

Get started

Insert the SIM Card



Install the battery





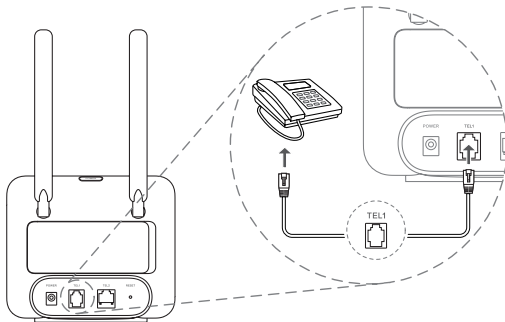
NOTES

- Press down firmly with your thumbs on the edges of the back cover and slide the cover as illustrated.
- Make sure the SIM card has been inserted before installing the battery.

Charge the HOME PHONE

The supplied battery pack may not fully charged at purchase. Plug in the power adapter to charge the battery pack and provide power to your device. Connect the power adapter cable to the power connector of the HOME PHONE. Then, plug the power adapter into an electrical outlet.

Connect your telephone to the HOME PHONE



Power on

Press and hold the power button for 3 seconds to turn on your device.

Make a call

With the voice function of HOME PHONE, you can make a call from your telephone.

- Step 1. Make sure your telephone is working. Check to see that the phone line from the phone set is plugged into the **TEL1** port of the device.
- Step 2. Remove the handset and wait for a dial tone.
- Step 3. Dial the number. Make sure the phone number consists of all necessary numbers such as the area code.



NOTE

Before making a call through your device, make sure the telephone indicator is solid blue.

Safety and regulatory information

Safety and use

Please read this chapter carefully before using your device. Failure to follow these safety instructions could result in injury, or damage to your device or other property. The manufacturer disclaims any liability for damage, which may result as a consequence of improper use or use contrary to the instructions contained herein.

- Do not use the device in areas where wireless devices are prohibited.
- When the device is switched on, it should be kept at least 15 cm from any medical device such as a pacemaker, a hearing aid, or an insulin pump. Consult your physician and medical device manufacturer for information specific to your medical device.
- Do not let children use the device and/or play with the device and accessories without supervision.
- Always handle your device with care, and keep it in a clean and dust-free place.
- Do not attempt to repair the device yourself.
- Do not drop, throw, or bend your device.
- Do not dispose of the device and its accessories in a fire.
- Do not allow your device to be exposed to adverse weather or environmental conditions (moisture, humidity, rain, infiltration of liquids, dust, sea air, etc.). The manufacturer's recommended operating temperature range is 0°C (32°F) to 45°C (113°F).
- Use only batteries, battery chargers, and accessories which are compatible with your device model.

CTIA Requirements

- a) Do not disassemble or open crush, bend or deform, puncture or shred.
 - b) Do not modify or remanufacture, attempt to insert foreign objects into the battery, immerse or expose to water or other liquids, expose to fire, explosion or other hazard.
 - c) Only use the battery for the system for which it is specified.
 - d) Only use the battery with a charging system that has been qualified with the system per CTIA Certification Requirements for Battery System Compliance to IEEE 1725. Use of an unqualified battery or charger may present a risk of fire, explosion, leakage, or other hazard.
 - e) Do not short circuit a battery or allow metallic conductive objects to contact battery terminals.
 - f) Replace the battery only with another battery that has been qualified with the system per this standard, IEEE-Std-1725. Use of an unqualified battery may present a risk of fire, explosion, leakage or other hazard.
- Only authorized service providers shall replace battery. (If the battery is non-user replaceable).
- g) Promptly dispose of used batteries in accordance with local regulations.
 - h) Battery usage by children should be supervised.
 - j) Avoid dropping the phone or battery. If the phone or battery is dropped, especially on a hard surface, and the user suspects damage, take it to a service center for inspection.
 - k) Improper battery use may result in a fire, explosion or other hazard.

Adapters

Mains powered adapters will operate within the temperature range of: 0°C (32°F) to 45°C (113°F).

The adapters designed for your device meet the standard for safety of information technology equipment and office equipment use. They are also compliant with the ecodesign directive 2009/125/EC. Due to different applicable electrical specifications, an adapter you purchased in one jurisdiction may not work in another jurisdiction. They should be used for the purpose of charging only.

Model: 1-CHUSB102-131/CYSE12-120100U

Input Voltage: 100~240 V

Input AC Frequency: 50/60 Hz

Output Voltage: 12.0 V

Output Current: 1.0 A

Output Power: 12.0 W

Average active efficiency: 83.0%

No-load power consumption: 0.01 W

Battery

CAUTION: RISK OF EXPLOSION IF BATTERY IS REPLACED BY AN INCORRECT TYPE. DISPOSE OF USED BATTERIES ACCORDING TO THE INSTRUCTIONS.

In accordance with air regulations, the battery of your product is not fully charged. Please charge it first.

- Do not attempt to open the battery (due to the risk of toxic fumes and burns).
- Do not puncture, disassemble, or short circuit the battery.
- The battery must be recycled or disposed of separately from household waste. Dispose of batteries according to your local environmental laws and guidelines.
- Replace the battery only with another qualified battery. Use of an unqualified battery may present a risk of fire, explosion, leakage, or other hazard.
- Do not use damaged battery.

FCC statement

FCC ID: 2ACCJB180

This equipment complies with Part 15 of the FCC Rules. Operation is subject to the following two conditions:

- This device may not cause harmful interference;
- This device must accept any interference received, including interference that may cause undesired operation.

Note: This equipment has been tested and found to comply with the limits for a Class B digital device pursuant to part 15 of the FCC Rules. These limits are designed to provide reasonable protection against harmful interference in a residential installation. This equipment generates, uses and can radiate radio frequency energy and, if not installed and used in accordance with the instructions, may cause harmful interference to radio communications. However, there is no guarantee that interference to radio or television reception, which can be determined by turning the equipment off and on, the user is encouraged to try to correct the interference by one or more of the following measures:

- Reorient or relocate the receiving antenna;
- Increase the separation between the equipment and receiver;
- Connect the equipment into an outlet on a circuit different from that to which the receiver is connected;
- Consult the dealer or an experienced radio/TV technician for help.

Changes or modifications not expressly approved by the party responsible for compliance could void the user's authority to operate the equipment.

FCC RF Radiation Exposure Statement Caution: To maintain compliance with the FCC's RF exposure guidelines, place the product at least 20cm from nearby persons.

Frequency bands and maximum radio-frequency power

This radio equipment operates with the following frequency bands and maximum radio-frequency power:

LTE FDD B7 (2600 MHz): xx dBm

LTE FDD B2/4/5/8/12/13/25/26/66/71 (xx MHz): xx dBm

LTE TDD B41 (2300 MHz): xx dBm

Waste disposal and recycling


Your device, accessory and removable battery must be disposed of in accordance with locally applicable environmental regulations.

This symbol on your device, the battery, and the accessories means that these products must be taken to:



- Municipal waste disposal centres with specific bins.
- Collection bins at points of sale.

They will then be recycled, preventing substances being disposed of in the environment.

 In European Union countries: These collection points are accessible free of charge. All products with this sign must be brought to these collection points.

In non-European Union jurisdictions: Items of equipment with this symbol are not to be thrown into ordinary bins if your jurisdiction or your region has suitable recycling and collection facilities; instead they are to be taken to collection points for them to be recycled.

General information

- **Internet address:** tcl.com
- **Service Hotline and Repair Center:** Go to our website www.tcl.com/global/en/service-support-mobile/hotline&service-center.html
- **Full User Manual:** Check the Help section on the login website to download the full user manual of your device.
- **Manufacturer:** TCL Communication Ltd.
- **Address:** 5/F, Building 22E, 22 Science Park East Avenue, Hong Kong Science Park, Shatin, NT, Hong Kong

Limited warranty

– Additional Rights Under Consumer Laws

As the consumer You may have legal (statutory) rights that are in addition to those set out in this Limited Warranty offered by Manufacturer voluntarily, such as the consumer laws of the country in which You live (“Consumer Rights”). This Limited Warranty sets out certain situations when the Manufacturer will, or will not, provide a remedy for the TCL device. This Limited Warranty does not limit or exclude any of your Consumer Rights relating to the TCL device.

– Manufacturer Warranty Coverage

This Manufacturer’s Limited Warranty sets forth the warranty responsibilities of the Manufacturer regarding TCL branded hardware and accessories manufactured by or on behalf of the Manufacturer.

The Manufacturer warrants to the original end-user purchaser of a new TCL device (“You”), that the TCL device will be free from defects in materials and workmanship under normal use from a period that commences on the date of original purchase by You and continuing for the following specified period of time for each applicable type of TCL device (the “Warranty period”).

This Limited Warranty is not transferable by You.

The applicable Warranty period is listed below:

TCL device & Embedded battery	24 months ⁽¹⁾
TCL accessories ⁽²⁾ : USB cable, Adapter	12 months ⁽¹⁾

In case of any defect of your device which prevents you from normal use thereof, you must immediately inform your vendor and present your device with your proof of purchase.

If the defect is confirmed by the Manufacturer or its authorised service providers, your device or part thereof will be either repaired or replaced, as appropriate. Repair or replacement may be carried out using reconditioned components offering equivalent functionality.

This warranty covers the costs of repair or replacement (labour and spare parts) but excludes any other costs.

This warranty shall not apply to defects on your device and/or accessory due to (without any limitation),

- non-compliance use with the instructions for use or installation, or with technical and safety standards applicable in the geographical area where your device is used;

⁽¹⁾ The Warranty period may vary depending on your country of purchase and/or channel of purchase.

⁽²⁾ If included.

- connection to any equipment not supplied or not recommended by the Manufacturer;
- repair performed by individuals not authorised by the Manufacturer or its affiliates;
- modification, adjustment or alteration of software or hardware performed by individuals not authorised by the Manufacturer;
- inclement weather, lightning, fire, humidity, infiltration of liquids or foods, chemical products, intrusion or download of malicious files/software (malware), crash, high voltage, corrosion, oxidation.

In no event shall the Manufacturer or any of its affiliates be liable for indirect, incidental or consequential damages of any nature whatsoever, including but not limited to commercial or financial loss or damage, loss of data or loss of image to the full extent those damages can be disclaimed by law.

Some countries/states do not allow the exclusion or limitation of indirect, incidental or consequential damages, or limitation of the duration of implied warranties, so the preceding limitations or exclusions may not apply to You.

If your TCL device is returned during the Warranty period, but your TCL device is not covered under this limited warranty, terms and charges may apply for any repair or processing performed.

If you do not live in the country where the TCL device was originally sold to you then,

- (a) warranty repair or service may not be possible;
- (b) you may be required to agree to terms and/or to pay certain costs (including but not limited to, shipping and handling costs);
- (c) the warranty repair or service, if possible, may take longer than normal to complete.

This limited warranty does not cover the backup, recovery or reinstallation of your data, files and applications to the TCL device.