

Vodafone
Mobile WiFi
R219t

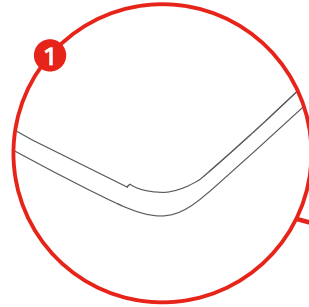
Quick Start Guide

Your Vodafone Mobile WiFi
network name & password

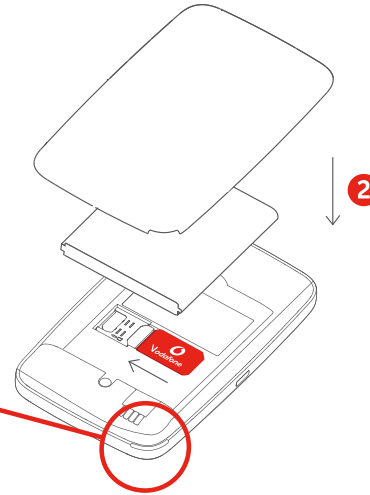
SSID sticker here

CIB1SSSV/DAAA

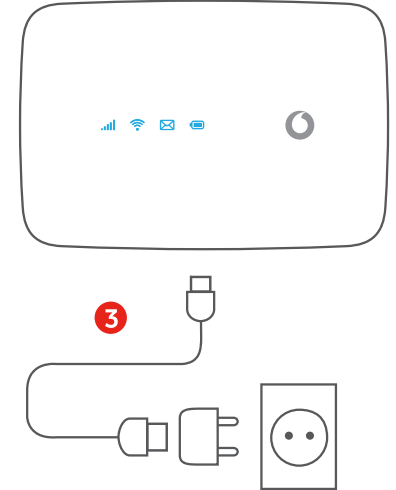
Open



Insert battery

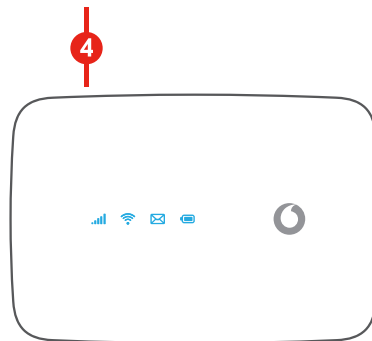


Charge

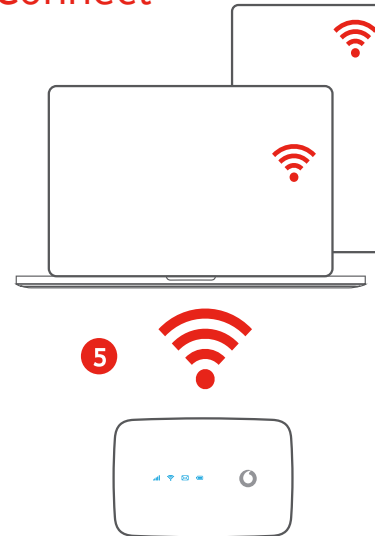


Start

Press and hold the power key



Connect



Note: you can use your computer's USB port for power as well.

Choose Wi-Fi on your computer, smartphone or tablet settings, then select your Mobile Wi-Fi network name.

Enter the password to connect and open the web interface.

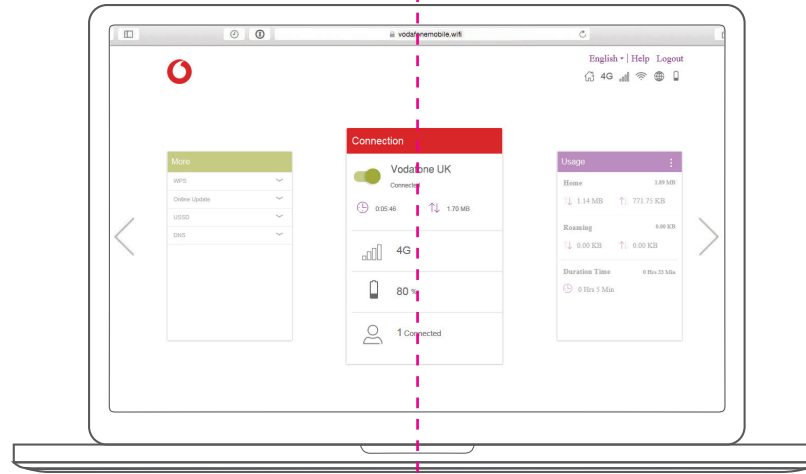
When you first connect to the network you may be asked to activate your SIM. If you're asked to unlock your SIM card, go to <http://vodafonemobile.wifi> and enter the PIN for your SIM.

Turn over for more information about using your Vodafone Mobile WiFi.

Using the web interface at vodafonemobile.wifi

You can find the web interface on vodafonemobile.wifi if it doesn't appear automatically when you connect. Then login using the password **admin**

Then you can see your network and Wi-Fi status, how much data you have used, get help and support, and even send and receive SMS messages from your computer.

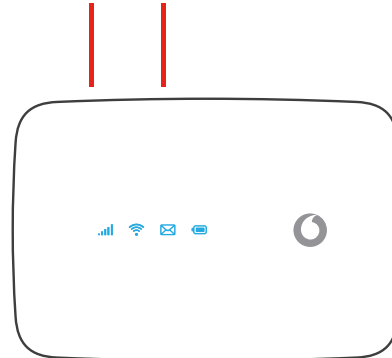


What the lights mean

Signal

- Connected to 4G network
- Connected to 3G network
- Connected to 2G network
- Registered to the network, but not connected (no internet)
- No connection. This could be because the SIM card is not inserted correctly, or because there is no network signal.

Power WPS



- Wi-Fi**
Wi-Fi active
- SMS**
New SMS
- (slow blinking:)
SMS Inbox full
- (fast blinking:)
Device update available at vodafonemobile.wifi
- No SMS
- Battery**
Fully charged
- Charging
- Battery low
- Standby - not charging

Power-saving modes

After **30 seconds** without a button being pressed, all the LED lights will turn off except the Power LED. Press any button to turn them on again.

After **10 minutes** without the Wi-Fi being used, the mobile network connection will turn off. When you press any key or when a device accesses the Wi-Fi, the network will be connected again automatically.

After **30 minutes** without the Wi-Fi being used, the Wi-Fi network will turn off. Press any button to turn the Wi-Fi network back on.

The buttons

Power button

Press and hold for 3 seconds to turn the device on/off.

Short press to put the LED in either active or sleep mode.

Press and hold for 10 seconds to reboot the device.

WPS button

Press and hold for 3 seconds to turn on WPS.

Reset

Press both Power and WPS buttons at the same time for 13 seconds to reset the device to factory mode.

© Vodafone Group 2021. Vodafone and the Vodafone logos are trade marks of Vodafone Group. Any product or company names mentioned herein may be the trade marks of their respective owners.