

# Hi! Let's get started.



TCL MOVEAUDIO S150  
TW10  
Quick start guide

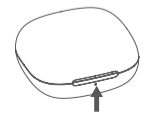
## 7. LED Lights Indications

### Earbuds LED



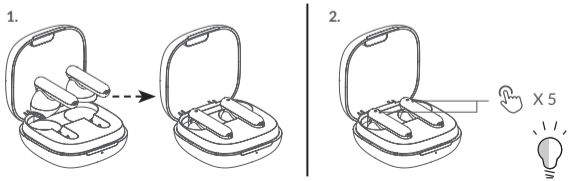
- Power on
- BT pairing mode
- BT connected
- Resetting
- Low battery

### Charging case LED

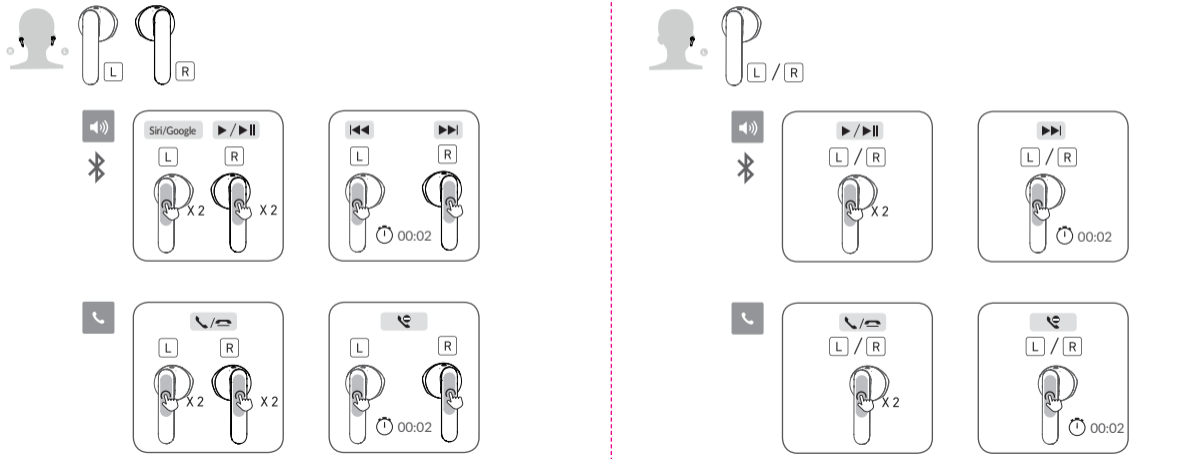


- Low battery
- Charging
- Full charged

## 8. Reset



## 6. Touch Control



For the full user manual in all languages or for help visit:  
[www.tcl.com](http://www.tcl.com)

2020 © TCL Communication Ltd. All rights reserved. This product has been manufactured by and is sold under the responsibility of TCL Communication Ltd.

Bluetooth headset works with any Bluetooth enabled phone or device.

Casque Bluetooth fonctionnant avec tout téléphone ou appareil Bluetooth.

The Bluetooth® word mark and logos are registered trademarks owned by Bluetooth SIG, Inc. and any use of such marks by TCL Communication Ltd. is under license. Other trademarks and trade names are those of their respective owners.

Caution: The user is cautioned that changes or modifications not expressly approved by the party responsible for compliance could void the user's authority to operate the equipment.

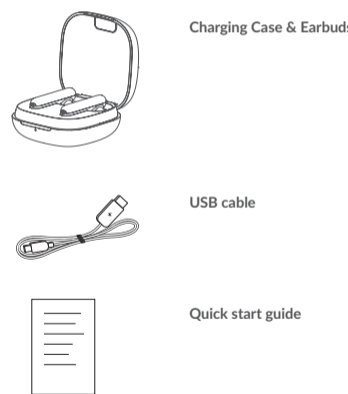
This device complies with part 15 of the FCC Rules. Operation is subject to the following two conditions: (1) This device may not cause harmful interference, and (2) this device must accept any interference received, including interference that may cause undesired operation.

### FCC rule

This equipment has been tested and found to comply with the limits for a Class B digital device pursuant to part 15 of the FCC Rules. These limits are designed to provide reasonable protection against harmful interference in a residential installation. This equipment generates, uses and can radiate radio frequency energy and, if not installed and used in accordance with the instructions, may cause harmful interference to radio communications. However, there is no guarantee that interference to radio or television reception, which can be determined by turning the equipment off and on, the user is encouraged to try to correct the interference by one or more of the following measures:

- Reorient or relocate the receiving antenna.
- Increase the separation between the equipment and receiver.
- Connect the equipment into an outlet on a circuit different from that to which the receiver is connected.
- Consult the dealer or an experienced radio/ TV technician for help.

# 1. What's in the box

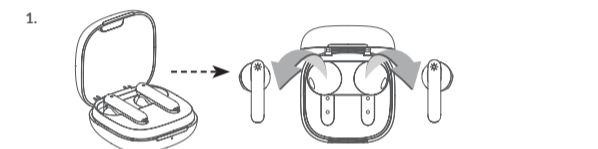


Charging Case & Earbuds

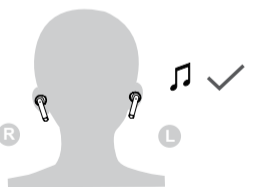
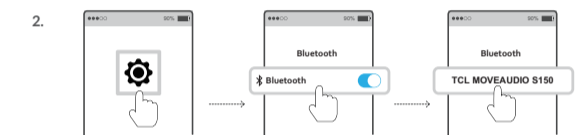
USB cable

Quick start guide

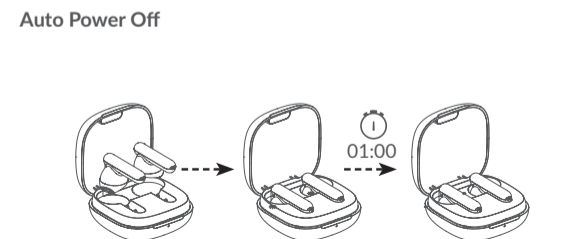
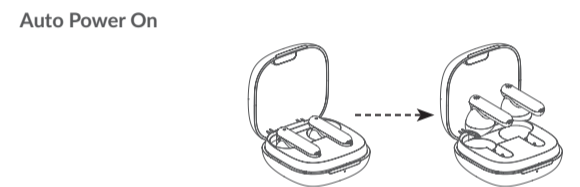
# 2. First Time Use



1. If earbud indicators don't flash when you take them out, please put earbuds back in the charging case and charge the charging case for 10 minutes



# 3. Auto Power On / Off



# 4. Manual Power On / Off



Manual power on/off only works when earbuds are not inside the charging case.

# 5. Charging

