



SAR TEST REPORT

No. I18Z60513-SEM01

For

TCL Communication Ltd.

LTE/UMTS/GSM Smartphone

Model Name: 5059J

With

Hardware Version: PIO

Software Version: 6J1QH1

FCC ID: 2ACCJB101

Issued Date: 2018-4-9



Note:

The test results in this test report relate only to the devices specified in this report. This report shall not be reproduced except in full without the written approval of CTTL.

The report must not be used by the client to claim product certification, approval, or endorsement by NVLAP, NIST, or any agency of the U.S. Government.

Test Laboratory:

CTTL, Telecommunication Technology Labs, CAICT

No. 51, Huayuan North Road, Haidian District, Beijing, P. R. China 100191.

Tel:+86(0)10-62304633-2512, Fax:+86(0)10-62304633-2504

Email: ctl_terminals@caict.ac.cn, website: www.caict.ac.cn



REPORT HISTORY

Report Number	Revision	Issue Date	Description
I18Z60513-SEM01	Rev.0	2018-4-9	Initial creation of test report



TABLE OF CONTENT

1	TEST LABORATORY	5
1.1	TESTING LOCATION	5
1.2	TESTING ENVIRONMENT	5
1.3	PROJECT DATA	5
1.4	SIGNATURE	5
2	STATEMENT OF COMPLIANCE	6
3	CLIENT INFORMATION	8
3.1	APPLICANT INFORMATION	8
3.2	MANUFACTURER INFORMATION	8
4	EQUIPMENT UNDER TEST (EUT) AND ANCILLARY EQUIPMENT (AE)	9
4.1	ABOUT EUT	9
4.2	INTERNAL IDENTIFICATION OF EUT USED DURING THE TEST	9
4.3	INTERNAL IDENTIFICATION OF AE USED DURING THE TEST	9
5	TEST METHODOLOGY	10
5.1	APPLICABLE LIMIT REGULATIONS	10
5.2	APPLICABLE MEASUREMENT STANDARDS	10
6	SPECIFIC ABSORPTION RATE (SAR)	11
6.1	INTRODUCTION	11
6.2	SAR DEFINITION	11
7	TISSUE SIMULATING LIQUIDS	12
7.1	TARGETS FOR TISSUE SIMULATING LIQUID	12
7.2	DIELECTRIC PERFORMANCE	13
8	SYSTEM VERIFICATION	20
8.1	SYSTEM SETUP	20
8.2	SYSTEM VERIFICATION	21
9	MEASUREMENT PROCEDURES	22
9.1	TESTS TO BE PERFORMED	22
9.2	GENERAL MEASUREMENT PROCEDURE	24
9.3	WCDMA MEASUREMENT PROCEDURES FOR SAR	25
9.4	SAR MEASUREMENT FOR LTE	26
9.5	BLUETOOTH & WI-FI MEASUREMENT PROCEDURES FOR SAR	26
9.6	POWER DRIFT	27
10	AREA SCAN BASED 1-G SAR	27
10.1	REQUIREMENT OF KDB	27
10.2	FAST SAR ALGORITHMS	27
11	CONDUCTED OUTPUT POWER	28



11.1	GSM MEASUREMENT RESULT	28
11.2	WCDMA MEASUREMENT RESULT.....	29
11.3	LTE MEASUREMENT RESULT	30
11.4	WI-FI AND BT MEASUREMENT RESULT	41
12	SIMULTANEOUS TX SAR CONSIDERATIONS	44
12.1	INTRODUCTION.....	44
12.2	TRANSMIT ANTENNA SEPARATION DISTANCES	44
12.3	SAR MEASUREMENT POSITIONS	45
12.4	STANDALONE SAR TEST EXCLUSION CONSIDERATIONS.....	45
13	EVALUATION OF SIMULTANEOUS.....	46
14	SAR TEST RESULT	47
14.1	EVALUATION OF MULTI-BATTERIES AND SIM SLOTS	47
14.2	SAR RESULTS	48
14.3	FULL SAR	64
15	SAR MEASUREMENT VARIABILITY	65
16	MEASUREMENT UNCERTAINTY	66
16.1	MEASUREMENT UNCERTAINTY FOR NORMAL SAR TESTS (300MHZ~3GHZ)	66
16.2	MEASUREMENT UNCERTAINTY FOR NORMAL SAR TESTS (3~6GHZ).....	67
16.3	MEASUREMENT UNCERTAINTY FOR FAST SAR TESTS (300MHZ~3GHZ).....	68
16.4	MEASUREMENT UNCERTAINTY FOR FAST SAR TESTS (3~6GHZ).....	69
17	MAIN TEST INSTRUMENTS.....	71
ANNEX A	GRAPH RESULTS.....	72
ANNEX B	SYSTEM VERIFICATION RESULTS.....	99
ANNEX C	SAR MEASUREMENT SETUP	122
ANNEX D	POSITION OF THE WIRELESS DEVICE IN RELATION TO THE PHANTOM	128
ANNEX E	EQUIVALENT MEDIA RECIPES	131
ANNEX F	SYSTEM VALIDATION	132
ANNEX G	PROBE CALIBRATION CERTIFICATE	133
ANNEX H	DIPOLE CALIBRATION CERTIFICATE.....	144
ANNEX I	SPOTCHECK.....	206
ANNEX J	ACCREDITATION CERTIFICATE.....	229

1 Test Laboratory

1.1 Testing Location

Company Name:	CTTL(Shouxiang)
Address:	No. 51 Shouxiang Science Building, Xueyuan Road, Haidian District, Beijing, P. R. China100191

1.2 Testing Environment

Temperature:	18°C~25 °C,
Relative humidity:	30%~ 70%
Ground system resistance:	< 0.5 Ω
Ambient noise & Reflection:	< 0.012 W/kg

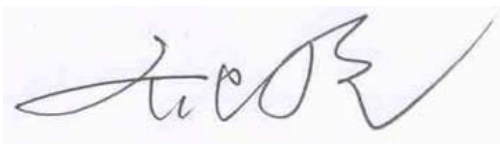
1.3 Project Data

Project Leader:	Qi Dianyuan
Test Engineer:	Lin Xiaojun
Testing Start Date:	March 1, 2018
Testing End Date:	April 6, 2018

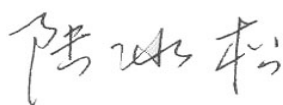
1.4 Signature



Lin Xiaojun
(Prepared this test report)



Qi Dianyuan
(Reviewed this test report)



Lu Bingsong
Deputy Director of the laboratory
(Approved this test report)

2 Statement of Compliance

This EUT is a variant product and the report of original sample is No.I17Z62255-SEM01. According to the client request, WCDMA1700 has been removed, we do the spotcheck for other bands except WiFi and share the test results of original report. We share the WiFi results of original sample directly. The results of spot check are presented in the annex I.

The maximum results of SAR found during testing for TCL Communication Ltd. LTE/UMTS/GSM Smartphone 5059J is as follows:

Table 2.1: Highest Reported SAR (1g)

Exposure Configuration	Technology Band	Highest Reported SAR 1g (W/Kg)	Equipment Class
Head (Separation Distance 0mm)	GSM 850	0.23	PCE
	PCS 1900	0.19	
	UMTS FDD 2	0.20	
	UMTS FDD 5	0.24	
	LTE Band 2	0.21	
	LTE Band 4	0.21	
	LTE Band 5	0.21	
	LTE Band 7	0.11	
	LTE Band 12	0.18	
	LTE Band 13	0.15	
	WLAN 2.4 GHz	<0.01	DTS
Hotspot (Separation Distance 10mm)	GSM 850	0.40	PCE
	PCS 1900	1.19	
	UMTS FDD 2	1.27	
	UMTS FDD 5	0.49	
	LTE Band 2	1.06	
	LTE Band 4	0.52	
	LTE Band 5	0.45	
	LTE Band 7	0.73	
	LTE Band 12	0.35	
	LTE Band 13	0.31	
	WLAN 2.4 GHz	/	DTS

The SAR values found for the Mobile Phone are below the maximum recommended levels of 1.6 W/Kg as averaged over any 1g tissue according to the ANSI C95.1-1992.

For body worn operation, this device has been tested and meets FCC RF exposure guidelines when used with any accessory that contains no metal and which provides a minimum separation distance of 10 mm between this device and the body of the user. Use of other accessories may not ensure compliance with FCC RF exposure guidelines.

The EUT battery must be fully charged and checked periodically during the test to ascertain uniform power output.

The measurement together with the test system set-up is described in annex C of this test report. A detailed description of the equipment under test can be found in chapter 4 of this test report.

The highest reported SAR value is obtained at the case of (Table 2.1), and the values are: 1.27 W/kg (1g).

Table 2.2: The sum of reported SAR values for main antenna and WiFi

	Position	Main antenna	WiFi	Sum
Highest reported SAR value for Head	Left hand, Touch cheek	0.24	<0.01	0.24
Highest reported SAR value for Body	Bottom	1.27	/	1.27

Table 2.3: The sum of reported SAR values for main antenna and BT

	Position	Main antenna	BT	Sum
Maximum reported SAR value for Head	Left hand, Touch cheek	0.24	0.21	0.44
Maximum reported SAR value for Body	Bottom	1.27	0.10	1.37

[1] - Estimated SAR for Bluetooth (see the table 13.3)

According to the above tables, the highest sum of reported SAR values is 1.37 W/kg (1g). The detail for simultaneous transmission consideration is described in chapter 13.

3 Client Information

3.1 Applicant Information

Company Name	TCL Communication Ltd.
Company Address	7/F, Block F4, TCL Communication Technology Building, TCL International E City, Zhong Shan Yuan Road, Nanshan District, Shenzhen, Guangdong, P.R. China 518052
Post Code	518052
Contact Person	Zhizhou Gong
Tel	0086-755-36611722
Mobile	0086-18217635320
Fax	0086-755-36612000 ext: 81722
E-Mail	zhizhou.gong@tcl.com
Company URL	www.alcatel-mobile.com

3.2 Manufacturer Information

Company Name	TCL Communication Ltd.
Company Address	7/F, Block F4, TCL Communication Technology Building, TCL International E City, Zhong Shan Yuan Road, Nanshan District, Shenzhen, Guangdong, P.R. China 518052
Post Code	518052
Contact Person	Zhizhou Gong
Tel	0086-755-36611722
Mobile	0086-18217635320
Fax	0086-755-36612000 ext: 81722
E-Mail	zhizhou.gong@tcl.com
Company URL	www.alcatel-mobile.com

4 Equipment Under Test (EUT) and Ancillary Equipment (AE)

4.1 About EUT

Description:	LTE/UMTS/GSM Smartphone
Model name:	5059J
Operating mode(s):	GSM 850/900/1800/1900 WCDMA850/900/1900/2100 LTE B1/2/3/4/5/7/12/13/17/28, BT, WLAN
Tested Tx Frequency:	825 – 848.8 MHz (GSM 850)
	1850.2 – 1910 MHz (GSM 1900)
	826.4–846.6 MHz (WCDMA 850 Band V)
	1852.4–1907.6 MHz (WCDMA1900 Band II)
	1860 – 1900 MHz (LTE Band 2)
	1720 – 1745 MHz (LTE Band 4)
	824.7 – 848.3 MHz (LTE Band 5)
	2502.5 – 2567.5 MHz (LTE Band 7)
	699.7 – 715.3 MHz (LTE Band 12)
779.5 –784.5 MHz (LTE Band 13)	
2412 – 2462 MHz (Wi-Fi 2.4G)	
GPRS/EGPRS Multislot Class:	12
GPRS capability Class:	B
Test device Production information:	Production unit
Device type:	Portable device
Antenna type:	Integrated antenna
Accessories/Body-worn configurations:	Headset
Hotspot mode:	Support

4.2 Internal Identification of EUT used during the test

EUT			
EUTID	IMEI	HW Version	SW Version
1	354454090002834	PIO	6J1B
2	354454090003840	PIO	6J1B
3	354454090003212	PIO	6J1B
4	354457090006200	PIO	6J1QH1
	354457090006218		
5	354457090007158	PIO	6J1QH1
	354457090007166		

*EUT ID: is used to identify the test sample in the lab internally.

Note: It is performed to test SAR with the EUT1&2&5 and conducted power with the EUT3&4.

4.3 Internal Identification of AE used during the test

AE ID	Description	Model	SN	Manufacturer
AE1	Battery	Li-Polymer	CAC2400008C1	BYD
AE2	Battery	Li-Polymer	CAC2400009C7	VEKEN
AE3	Headset	Stereo Earphone	CCB0046A10C1	JUWEI
AE4	Headset	Stereo Earphone	CCB0046A10C4	MEIHAO

*AE ID: is used to identify the test sample in the lab internally.



5 TEST METHODOLOGY

5.1 Applicable Limit Regulations

ANSI C95.1–1992: IEEE Standard for Safety Levels with Respect to Human Exposure to Radio Frequency Electromagnetic Fields, 3 kHz to 300 GHz.

It specifies the maximum exposure limit of **1.6 W/kg** as averaged over any 1 gram of tissue for portable devices being used within 20 cm of the user in the uncontrolled environment.

5.2 Applicable Measurement Standards

IEEE 1528–2013: Recommended Practice for Determining the Peak Spatial-Average Specific Absorption Rate (SAR) in the Human Head from Wireless Communications Devices: Measurement Techniques.

KDB447498 D01 General RF Exposure Guidance v06: Mobile and Portable Devices RF Exposure Procedures and Equipment Authorization Policies.

KDB648474 D04 Handset SAR v01r03: SAR Evaluation Considerations for Wireless Handsets.

KDB941225 D01 SAR test for 3G devices v03r01: SAR Measurement Procedures for 3G Devices

KDB941225 D05 SAR for LTE Devices v02r05: SAR Evaluation Considerations for LTE Devices

KDB248227 D01 802.11 Wi-Fi SAR v02r02: SAR GUIDANCE FOR IEEE 802.11 (Wi-Fi) TRANSMITTERS

KDB865664 D01 SAR measurement 100 MHz to 6 GHz v01r04: SAR Measurement Requirements for 100 MHz to 6 GHz.

KDB865664 D02 RF Exposure Reporting v01r02: RF Exposure Compliance Reporting and Documentation Considerations

6 Specific Absorption Rate (SAR)

6.1 Introduction

SAR is related to the rate at which energy is absorbed per unit mass in an object exposed to a radio field. The SAR distribution in a biological body is complicated and is usually carried out by experimental techniques or numerical modeling. The standard recommends limits for two tiers of groups, occupational/controlled and general population/uncontrolled, based on a person's awareness and ability to exercise control over his or her exposure. In general, occupational/controlled exposure limits are higher than the limits for general population/uncontrolled.

6.2 SAR Definition

The SAR definition is the time derivative (rate) of the incremental energy (dW) absorbed by (dissipated in) an incremental mass (dm) contained in a volume element (dv) of a given density (ρ). The equation description is as below:

$$SAR = \frac{d}{dt} \left(\frac{dW}{dm} \right) = \frac{d}{dt} \left(\frac{dW}{\rho dv} \right)$$

SAR is expressed in units of Watts per kilogram (W/kg)

SAR measurement can be either related to the temperature elevation in tissue by

$$SAR = c \left(\frac{\delta T}{\delta t} \right)$$

Where: C is the specific heat capacity, δT is the temperature rise and δt is the exposure duration, or related to the electrical field in the tissue by

$$SAR = \frac{\sigma |E|^2}{\rho}$$

Where: σ is the conductivity of the tissue, ρ is the mass density of tissue and E is the RMS electrical field strength.

However for evaluating SAR of low power transmitter, electrical field measurement is typically applied.

7 Tissue Simulating Liquids

7.1 Targets for tissue simulating liquid

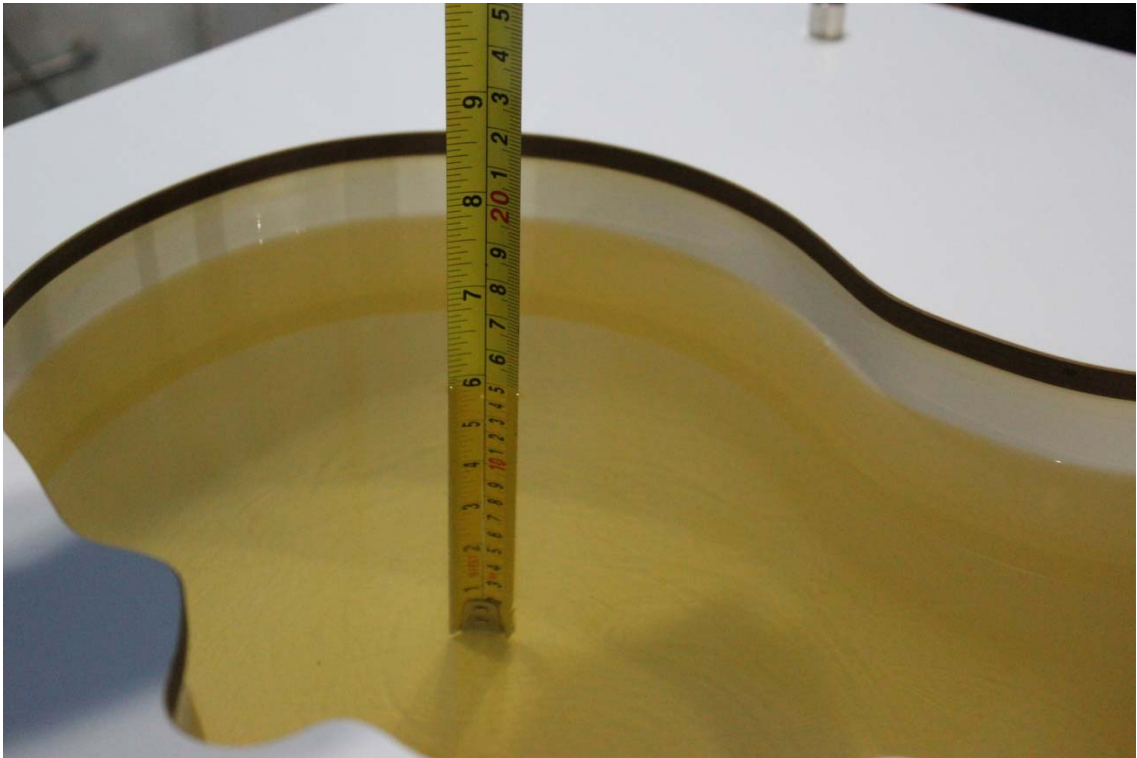
Table 7.1: Targets for tissue simulating liquid

Frequency(MHz)	Liquid Type	Conductivity(σ)	$\pm 5\%$ Range	Permittivity(ϵ)	$\pm 5\%$ Range
835	Head	0.90	0.86~0.95	41.5	39.4~43.6
835	Body	0.97	0.92~1.02	55.2	52.4~58.0
1900	Head	1.40	1.33~1.47	40.0	38.0~42.0
1900	Body	1.52	1.44~1.60	53.3	50.6~56.0
2450	Head	1.80	1.71~1.89	39.2	37.2~41.2
2450	Body	1.95	1.85~2.05	52.7	50.1~55.3
2600	Head	1.96	1.86~2.06	39.01	37.06~40.96
2600	Body	2.16	2.05~2.27	52.5	49.9~55.1
5250	Head	4.71	4.47~4.95	35.93	34.1~37.7
5250	Body	5.36	5.09~5.63	48.9	46.5~51.3
5600	Head	5.07	4.82~5.32	35.53	33.8~37.3
5600	Body	5.77	5.48~6.06	48.5	46.1~50.9
5750	Head	5.22	4.96~5.48	35.36	33.6~37.1
5750	Body	5.94	5.64~6.24	48.3	45.9~50.7

7.2 Dielectric Performance

Table 7.2: Dielectric Performance of Tissue Simulating Liquid

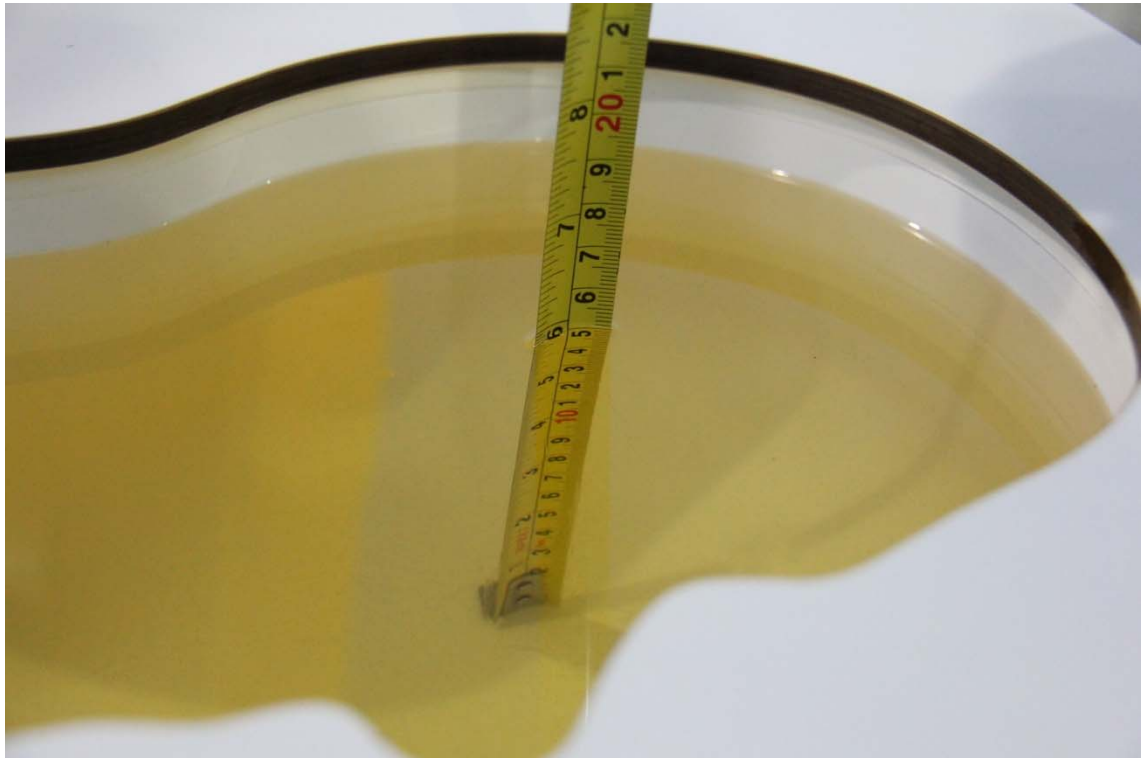
Measurement Date yyyy/mm/dd	Frequency	Type	Permittivity ϵ	Drift (%)	Conductivity σ (S/m)	Drift (%)
2018/3/1	750 MHz	Head	41.35	-1.41	0.888	-0.22
		Body	55.95	0.81	0.955	-0.52
2018/3/2	835 MHz	Head	41.1	-0.96	0.892	-0.89
		Body	54.29	-1.65	0.977	0.72
2018/3/3	1750 MHz	Head	40.82	1.85	1.377	0.51
		Body	52.58	-1.54	1.485	-0.34
2018/3/4	1900 MHz	Head	39.99	-0.02	1.428	2.00
		Body	53.11	-0.36	1.51	-0.66
2018/3/5	2450 MHz	Head	38.99	-0.54	1.78	-1.11
		Body	53.49	1.50	1.957	0.36
2018/3/6	2600 MHz	Head	39.06	0.13	1.925	-1.79
		Body	52.63	0.25	2.179	0.88
2018/4/1	750 MHz	Head	42.5	1.34	0.89	0.00
		Body	55.24	-0.47	0.97	1.04
2018/4/2	835 MHz	Head	40.69	-1.95	0.888	-1.33
		Body	54.43	-1.39	0.955	-1.55
2018/4/3	1750 MHz	Head	40.2	0.30	1.354	-1.17
		Body	53.07	-0.62	1.482	-0.54
2018/4/4	1900 MHz	Head	39.38	-1.55	1.411	0.79
		Body	52.85	-0.84	1.496	-1.58
2018/4/6	2600 MHz	Head	39.01	0.00	1.956	-0.20
		Body	52.3	-0.38	2.177	0.79



Picture 7-1 Liquid depth in the Head Phantom (750 MHz)



Picture 7-2 Liquid depth in the Flat Phantom (750 MHz)



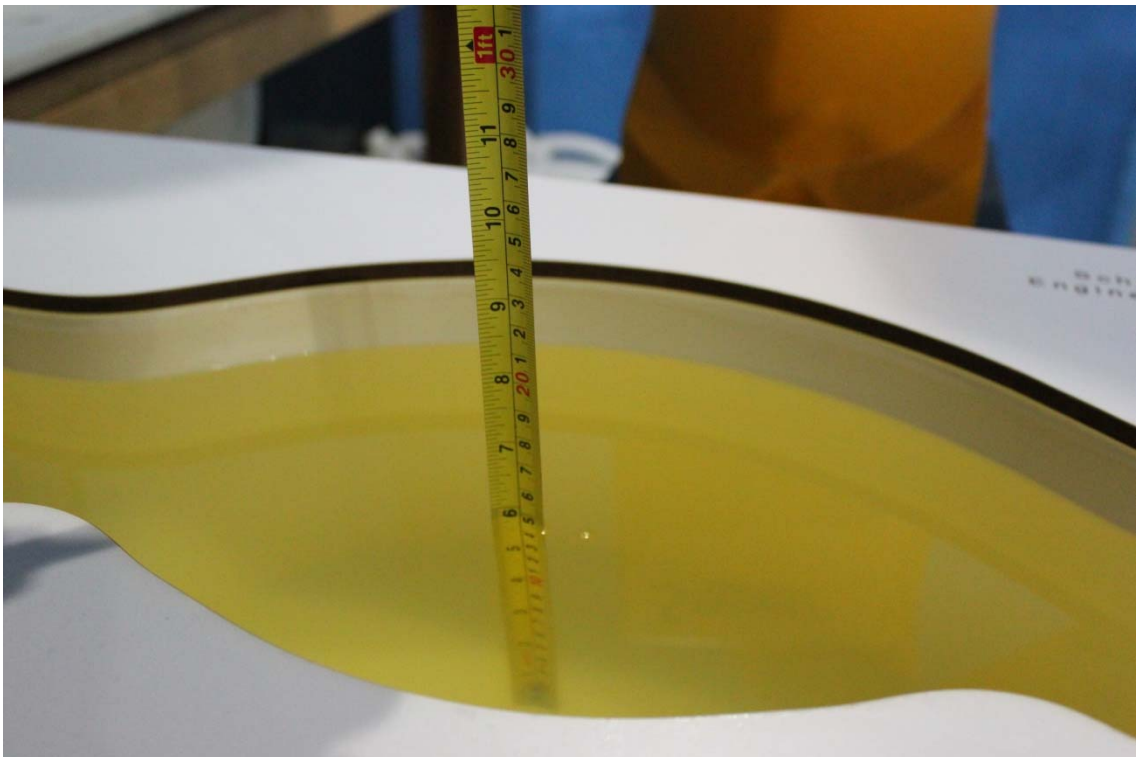
Picture 7-3 Liquid depth in the Head Phantom (835MHz)



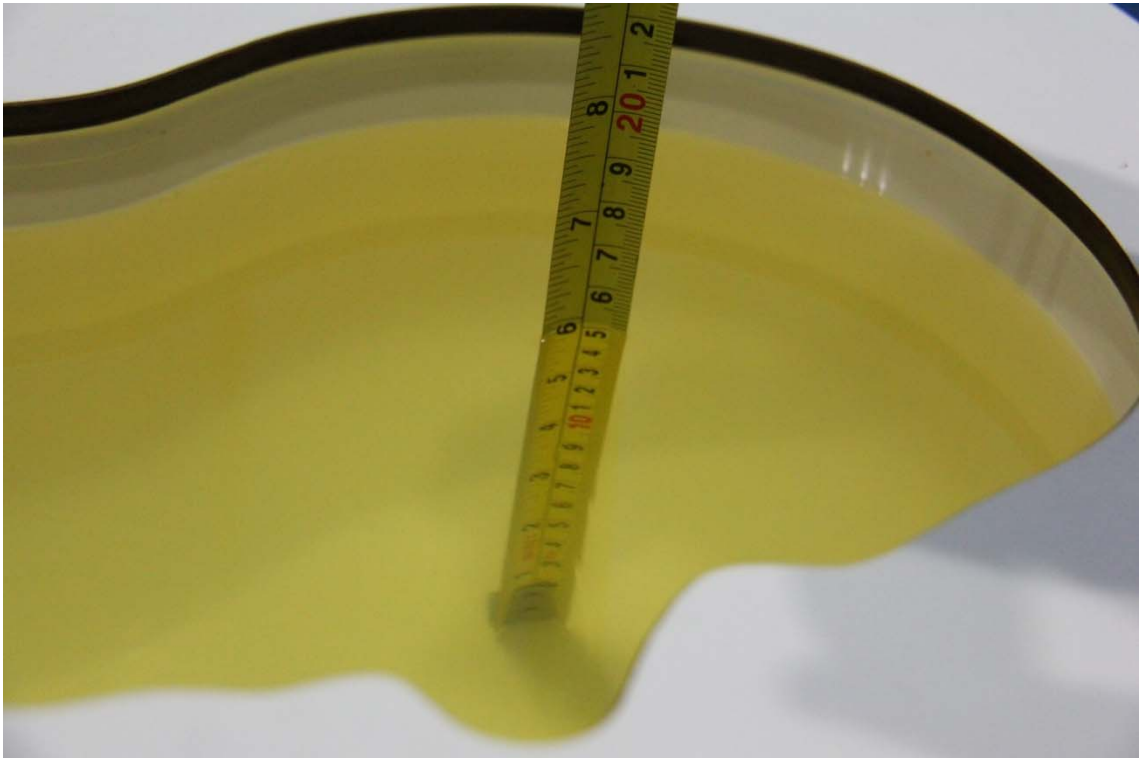
Picture 7-4 Liquid depth in the Flat Phantom (835MHz)



Picture 7-5 Liquid depth in the Head Phantom (1750 MHz)



Picture 7-6 Liquid depth in the Flat Phantom (1750MHz)



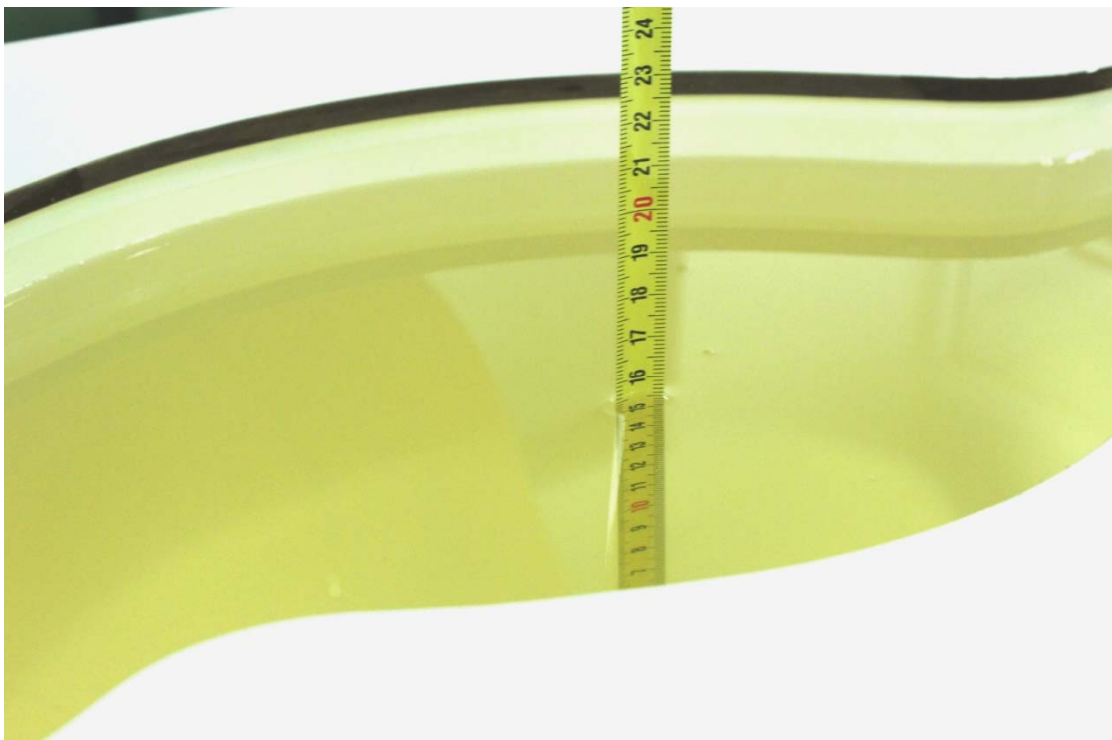
Picture 7-7 Liquid depth in the Head Phantom (1900 MHz)



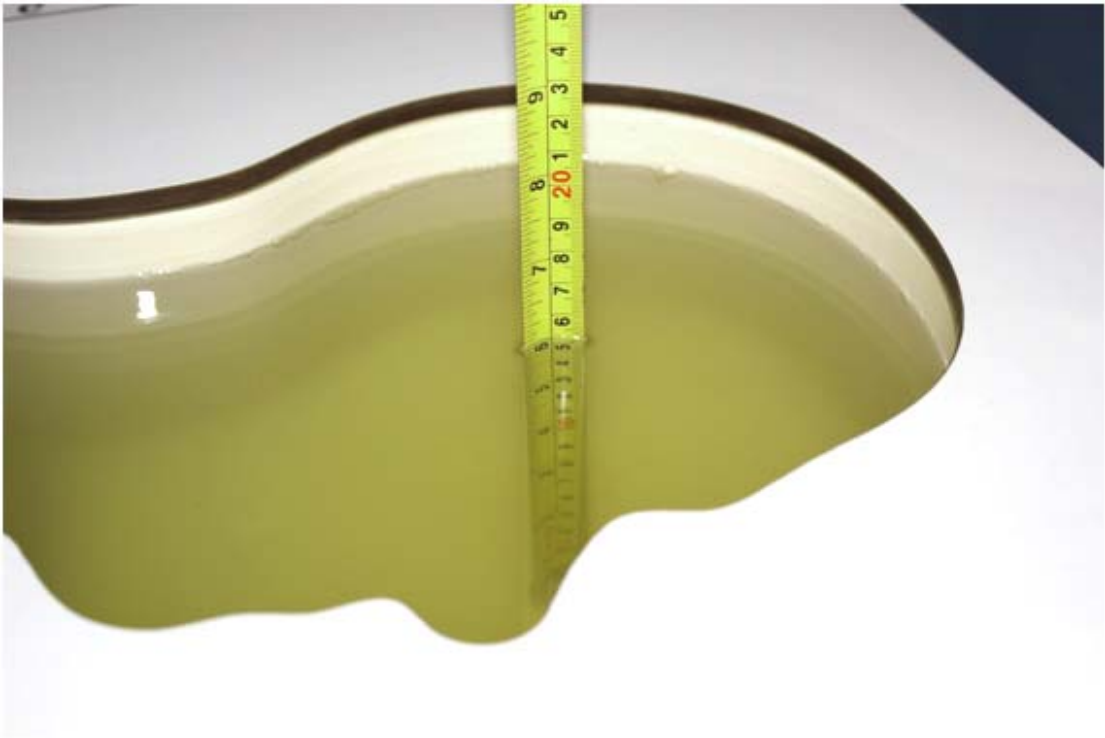
Picture 7-8 Liquid depth in the Flat Phantom (1900MHz)



Picture 7-9 Liquid depth in the Head Phantom (2450MHz)



Picture 7-10 Liquid depth in the Flat Phantom (2450MHz)



Picture 7-11 Liquid depth in the Head Phantom (2600 MHz Head)

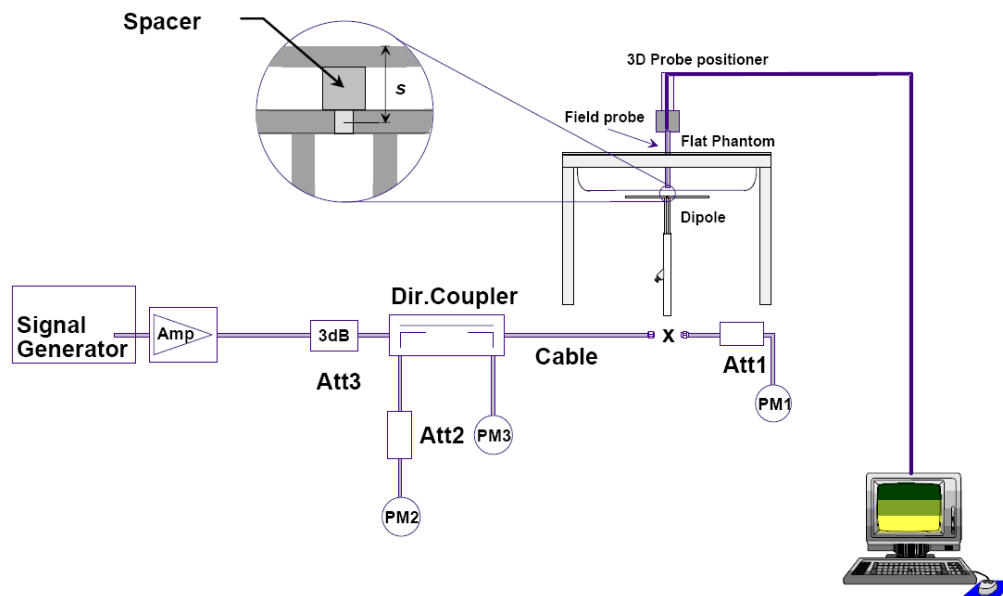


Picture 7-12 Liquid depth in the Flat Phantom (2600MHz)

8 System verification

8.1 System Setup

In the simplified setup for system evaluation, the DUT is replaced by a calibrated dipole and the power source is replaced by a continuous wave that comes from a signal generator. The calibrated dipole must be placed beneath the flat phantom section of the SAM twin phantom with the correct distance holder. The distance holder should touch the phantom surface with a light pressure at the reference marking and be oriented parallel to the long side of the phantom. The equipment setup is shown below:



Picture 8.1 System Setup for System Evaluation



Picture 8.2 Photo of Dipole Setup

8.2 System Verification

SAR system verification is required to confirm measurement accuracy, according to the tissue dielectric media, probe calibration points and other system operating parameters required for measuring the SAR of a test device. The system verification must be performed for each frequency band and within the valid range of each probe calibration point required for testing the device. The system verification results are required that the area scan estimated 1-g SAR is within 3% of the zoom scan 1-g SAR. The details are presented in annex B.

Table 8.1: System Verification of Head

Measurement Date (yyyy-mm-dd)	Frequency	Target value (W/kg)		Measured value (W/kg)		Deviation	
		10 g Average	1 g Average	10 g Average	1 g Average	10 g Average	1 g Average
2018/3/1	750 MHz	5.42	8.32	5.52	8.36	1.85%	0.48%
2018/3/2	835 MHz	6.06	9.37	6.08	9.24	0.33%	-1.39%
2018/3/3	1750 MHz	19.4	36.7	19.44	36.76	0.21%	0.16%
2018/3/4	1900 MHz	21.0	40.0	21.32	40	1.52%	0.00%
2018/3/5	2450 MHz	24.7	52.2	25	51.28	1.21%	-1.76%
2018/3/6	2600 MHz	25.8	57.9	25.68	56.76	-0.47%	-1.97%
2018/4/1	750 MHz	5.42	8.32	5.32	8.48	-1.85%	1.92%
2018/4/2	835 MHz	6.06	9.37	6	9.48	-0.99%	1.17%
2018/4/3	1750 MHz	19.4	36.7	19.76	36.56	1.86%	-0.38%
2018/4/4	1900 MHz	21.0	40.0	20.92	40.36	-0.38%	0.90%
2018/4/6	2600 MHz	25.8	57.9	25.88	57.72	0.31%	-0.31%

Table 8.2: System Verification of Body

Measurement Date (yyyy-mm-dd)	Frequency	Target value (W/kg)		Measured value (W/kg)		Deviation	
		10 g Average	1 g Average	10 g Average	1 g Average	10 g Average	1 g Average
2018/3/1	750 MHz	5.68	8.66	5.6	8.56	-1.41%	-1.15%
2018/3/2	835 MHz	6.12	9.41	6.2	9.56	1.31%	1.59%
2018/3/3	1750 MHz	19.8	37.1	19.72	37.72	-0.40%	1.67%
2018/3/4	1900 MHz	21.5	40.5	21.4	40.8	-0.47%	0.74%
2018/3/5	2450 MHz	23.8	50.4	23.68	49.52	-0.50%	-1.75%
2018/3/6	2600 MHz	24.8	55.5	24.56	55.36	-0.97%	-0.25%
2018/4/1	750 MHz	5.68	8.66	5.68	8.64	0.00%	-0.23%
2018/4/2	835 MHz	6.12	9.41	6.12	9.52	0.00%	1.17%
2018/4/3	1750 MHz	19.8	37.1	19.6	37.56	-1.01%	1.24%
2018/4/4	1900 MHz	21.5	40.5	21.88	40.76	1.77%	0.64%
2018/4/6	2600 MHz	24.8	55.5	25.08	55.6	1.13%	0.18%

9 Measurement Procedures

9.1 Tests to be performed

In order to determine the highest value of the peak spatial-average SAR of a handset, all device positions, configurations and operational modes shall be tested for each frequency band according to steps 1 to 3 below. A flowchart of the test process is shown in picture 9.1.

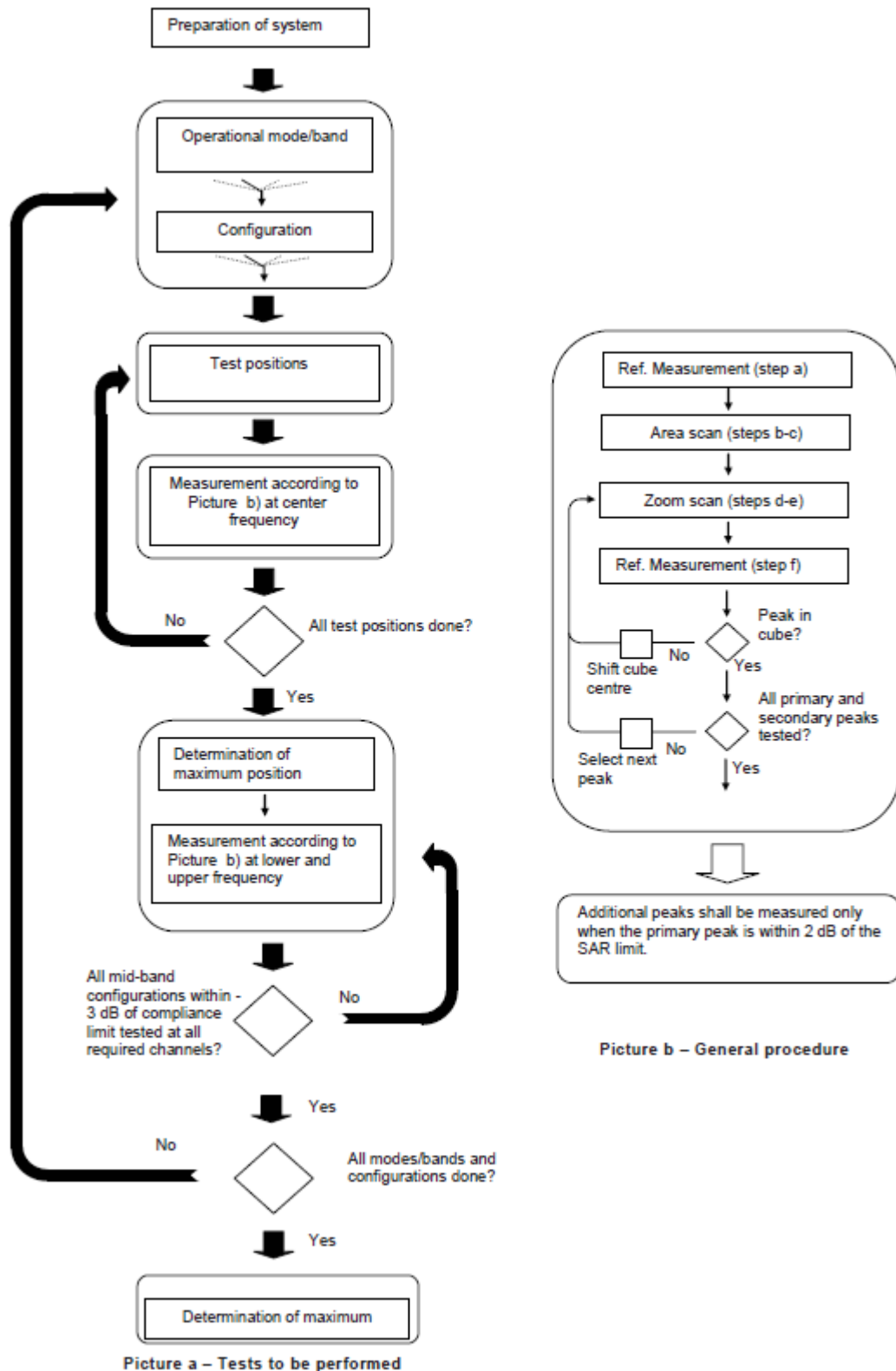
Step 1: The tests described in 9.2 shall be performed at the channel that is closest to the center of the transmit frequency band (f_c) for:

- a) all device positions (cheek and tilt, for both left and right sides of the SAM phantom, as described in annex D),
- b) all configurations for each device position in a), e.g., antenna extended and retracted, and
- c) all operational modes, e.g., analogue and digital, for each device position in a) and configuration in b) in each frequency band.

If more than three frequencies need to be tested according to 11.1 (i.e., $N_c > 3$), then all frequencies, configurations and modes shall be tested for all of the above test conditions.

Step 2: For the condition providing highest peak spatial-average SAR determined in Step 1, perform all tests described in 9.2 at all other test frequencies, i.e., lowest and highest frequencies. In addition, for all other conditions (device position, configuration and operational mode) where the peak spatial-average SAR value determined in Step 1 is within 3 dB of the applicable SAR limit, it is recommended that all other test frequencies shall be tested as well.

Step 3: Examine all data to determine the highest value of the peak spatial-average SAR found in Steps 1 to 2.



Picture 9.1 Block diagram of the tests to be performed

9.2 General Measurement Procedure

The area and zoom scan resolutions specified in the table below must be applied to the SAR measurements and fully documented in SAR reports to qualify for TCB approval. Probe boundary effect error compensation is required for measurements with the probe tip closer than half a probe tip diameter to the phantom surface. Both the probe tip diameter and sensor offset distance must satisfy measurement protocols; to ensure probe boundary effect errors are minimized and the higher fields closest to the phantom surface can be correctly measured and extrapolated to the phantom surface for computing 1-g SAR. Tolerances of the post-processing algorithms must be verified by the test laboratory for the scan resolutions used in the SAR measurements, according to the reference distribution functions specified in IEEE Std 1528-2013. The results should be documented as part of the system validation records and may be requested to support test results when all the measurement parameters in the following table are not satisfied.

		≤ 3 GHz	> 3 GHz
Maximum distance from closest measurement point (geometric center of probe sensors) to phantom surface		5 ± 1 mm	$\frac{1}{2} \cdot \delta \cdot \ln(2) \pm 0.5$ mm
Maximum probe angle from probe axis to phantom surface normal at the measurement location		$30^\circ \pm 1^\circ$	$20^\circ \pm 1^\circ$
Maximum area scan spatial resolution: Δx_{Area} , Δy_{Area}		≤ 2 GHz: ≤ 15 mm 2 – 3 GHz: ≤ 12 mm	3 – 4 GHz: ≤ 12 mm 4 – 6 GHz: ≤ 10 mm
		When the x or y dimension of the test device, in the measurement plane orientation, is smaller than the above, the measurement resolution must be \leq the corresponding x or y dimension of the test device with at least one measurement point on the test device.	
Maximum zoom scan spatial resolution: Δx_{Zoom} , Δy_{Zoom}		≤ 2 GHz: ≤ 8 mm 2 – 3 GHz: ≤ 5 mm*	3 – 4 GHz: ≤ 5 mm* 4 – 6 GHz: ≤ 4 mm*
Maximum zoom scan spatial resolution, normal to phantom surface	uniform grid: $\Delta z_{Zoom}(n)$	≤ 5 mm	3 – 4 GHz: ≤ 4 mm 4 – 5 GHz: ≤ 3 mm 5 – 6 GHz: ≤ 2 mm
	graded grid $\Delta z_{Zoom}(1)$: between 1 st two points closest to phantom surface	≤ 4 mm	3 – 4 GHz: ≤ 3 mm 4 – 5 GHz: ≤ 2.5 mm 5 – 6 GHz: ≤ 2 mm
	$\Delta z_{Zoom}(n>1)$: between subsequent points	$\leq 1.5 \cdot \Delta z_{Zoom}(n-1)$	
Minimum zoom scan volume	x, y, z	≥ 30 mm	3 – 4 GHz: ≥ 28 mm 4 – 5 GHz: ≥ 25 mm 5 – 6 GHz: ≥ 22 mm
<p>Note: δ is the penetration depth of a plane-wave at normal incidence to the tissue medium; see draft standard IEEE P1528-2011 for details.</p> <p>* When zoom scan is required and the <i>reported</i> SAR from the area scan based 1-g SAR estimation procedures of KDB 447498 is ≤ 1.4 W/kg, ≤ 8 mm, ≤ 7 mm and ≤ 5 mm zoom scan resolution may be applied, respectively, for 2 GHz to 3 GHz, 3 GHz to 4 GHz and 4 GHz to 6 GHz.</p>			

9.3 WCDMA Measurement Procedures for SAR

The following procedures are applicable to WCDMA handsets operating under 3GPP Release99, Release 5 and Release 6. The default test configuration is to measure SAR with an established radio link between the DUT and a communication test set using a 12.2kbps RMC (reference measurement channel) configured in Test Loop Mode 1. SAR is selectively confirmed for other physical channel configurations (DPCCH & DPDCH_n), HSDPA and HSPA (HSUPA/HSDPA) modes according to output power, exposure conditions and device operating capabilities. Both uplink and downlink should be configured with the same RMC or AMR, when required. SAR for Release 5 HSDPA and Release 6 HSPA are measured using the applicable FRC (fixed reference channel) and E-DCH reference channel configurations. Maximum output power is verified according to applicable versions of 3GPP TS 34.121 and SAR must be measured according to these maximum output conditions. When Maximum Power Reduction (MPR) is not implemented according to Cubic Metric (CM) requirements for Release 6 HSPA, the following procedures do not apply.

For Release 5 HSDPA Data Devices:

Sub-test	β_c	β_d	β_d (SF)	β_c / β_d	β_{hs}	CM/dB
1	2/15	15/15	64	2/15	4/15	0.0
2	12/15	15/15	64	12/15	24/25	1.0
3	15/15	8/15	64	15/8	30/15	1.5
4	15/15	4/15	64	15/4	30/15	1.5

For Release 6 HSPA Data Devices

Sub-test	β_c	β_d	β_d (SF)	β_c / β_d	β_{hs}	β_{ec}	β_{ed}	β_{ed} (SF)	β_{ed} (codes)	CM (dB)	MPR (dB)	AG Index	E-TFCI
1	11/15	15/15	64	11/15	22/15	209/225	1039/225	4	1	1.5	1.5	20	75
2	6/15	15/15	64	6/15	12/15	12/15	12/15	4	1	1.5	1.5	12	67
3	15/15	9/15	64	15/9	30/15	30/15	$\beta_{ed1}:47/15$ $\beta_{ed2}:47/15$	4	2	1.5	1.5	15	92
4	2/15	15/15	64	2/15	4/15	4/15	56/75	4	1	1.5	1.5	17	71
5	15/15	15/15	64	15/15	24/15	30/15	134/15	4	1	1.5	1.5	21	81

Rel.8 DC-HSDPA (Cat 24)

SAR test exclusion for Rel.8 DC-HSDPA must satisfy the SAR test exclusion requirements of Rel.5 HSDPA. SAR test exclusion for DC-HSDPA devices is determined by power measurements according to the H-Set 12, Fixed Reference Channel (FRC) configuration in Table C.8.1.12 of 3GPP TS 34.121-1. A primary and a secondary serving HS-DSCH Cell are required to perform the power measurement and for the results to qualify for SAR test exclusion.

9.4 SAR Measurement for LTE

SAR tests for LTE are performed with a base station simulator, Rohde & Schwarz CMW500. Closed loop power control was used so the UE transmits with maximum output power during SAR testing. All powers were measured with the CMW 500.

It is performed for conducted power and SAR based on the KDB941225 D05.

SAR is evaluated separately according to the following procedures for the different test positions in each exposure condition – head, body, body-worn accessories and other use conditions. The procedures in the following subsections are applied separately to test each LTE frequency band.

1) QPSK with 1 RB allocation

Start with the largest channel bandwidth and measure SAR for QPSK with 1 RB allocation, using the RB offset and required test channel combination with the highest maximum output power among RB offsets at the upper edge, middle and lower edge of each required test channel. When the reported SAR is ≤ 0.8 W/kg, testing of the remaining RB offset configurations and required test channels is not required for 1 RB allocation; otherwise, SAR is required for the remaining required test channels and only for the RB offset configuration with the highest output power for that channel. When the reported SAR of a required test channel is > 1.45 W/kg, SAR is required for all three RB offset configurations for that required test channel.

2) QPSK with 50% RB allocation

The procedures required for 1 RB allocation in 1) are applied to measure the SAR for QPSK with 50% RB allocation.

3) QPSK with 100% RB allocation

For QPSK with 100% RB allocation, SAR is not required when the highest maximum output power for 100 % RB allocation is less than the highest maximum output power in 50% and 1 RB allocations and the highest reported SAR for 1 RB and 50% RB allocation in 1) and 2) are ≤ 0.8 W/kg. Otherwise, SAR is measured for the highest output power channel; and if the reported SAR is > 1.45 W/kg, the remaining required test channels must also be tested.

9.5 Bluetooth & Wi-Fi Measurement Procedures for SAR

Normal network operating configurations are not suitable for measuring the SAR of 802.11 transmitters in general. Unpredictable fluctuations in network traffic and antenna diversity conditions can introduce undesirable variations in SAR results. The SAR for these devices should be measured using chipset based test mode software to ensure that the results are consistent and reliable.

Chipset based test mode software is hardware dependent and generally varies among manufacturers. The device operating parameters established in a test mode for SAR measurements must be identical to those programmed in production units, including output power levels, amplifier gain settings and other RF performance tuning parameters. The test frequencies should correspond to actual channel frequencies defined for domestic use. SAR for devices with switched diversity should be measured with only one antenna transmitting at a time during each SAR measurement, according to a fixed modulation and data rate. The same data pattern should be used for all measurements.

9.6 Power Drift

To control the output power stability during the SAR test, DASY4 system calculates the power drift by measuring the E-field at the same location at the beginning and at the end of the measurement for each test position. These drift values can be found in section 14 labeled as: (Power Drift [dB]). This ensures that the power drift during one measurement is within 5%.

10 Area Scan Based 1-g SAR

10.1 Requirement of KDB

According to the KDB447498 D01 v05, when the implementation is based the specific polynomial fit algorithm as presented at the 29th Bioelectromagnetics Society meeting (2007) and the estimated 1-g SAR is ≤ 1.2 W/kg, a zoom scan measurement is not required provided it is also not needed for any other purpose; for example, if the peak SAR location required for simultaneous transmission SAR test exclusion can be determined accurately by the SAR system or manually to discriminate between distinctive peaks and scattered noisy SAR distributions from area scans.

There must not be any warning or alert messages due to various measurement concerns identified by the SAR system; for example, noise in measurements, peaks too close to scan boundary, peaks are too sharp, spatial resolution and uncertainty issues etc. The SAR system verification must also demonstrate that the area scan estimated 1-g SAR is within 3% of the zoom scan 1-g SAR (See Annex B). When all the SAR results for each exposure condition in a frequency band and wireless mode are based on estimated 1-g SAR, the 1-g SAR for the highest SAR configuration must be determined by a zoom scan.

10.2 Fast SAR Algorithms

The approach is based on the area scan measurement applying a frequency dependent attenuation parameter. This attenuation parameter was empirically determined by analyzing a large number of phones. The MOTOROLA FAST SAR was developed and validated by the MOTOROLA Research Group in Ft. Lauderdale.

In the initial study, an approximation algorithm based on Linear fit was developed. The accuracy of the algorithm has been demonstrated across a broad frequency range (136-2450 MHz) and for both 1- and 10-g averaged SAR using a sample of 264 SAR measurements from 55 wireless handsets. For the sample size studied, the root-mean-squared errors of the algorithm are 1.2% and 5.8% for 1- and 10-g averaged SAR, respectively. The paper describing the algorithm in detail is expected to be published in August 2004 within the Special Issue of Transactions on MTT.

In the second step, the same research group optimized the fitting algorithm to an Polynomial fit whereby the frequency validity was extended to cover the range 30-6000MHz. Details of this study can be found in the BEMS 2007 Proceedings.

Both algorithms are implemented in DASY software.

11 Conducted Output Power

11.1 GSM Measurement result

During the process of testing, the EUT was controlled via Agilent Digital Radio Communication tester (E5515C) to ensure the maximum power transmission and proper modulation. This result contains conducted output power for the EUT. In all cases, the measured peak output power should be greater and within 5% than EMI measurement.

Table 11-1 GSM850 #1

GSM850 #1								
Config	Tune-up	Measured Power (dBm)			Calculation	Frame Burst Power (dBm)		
		CH251 848.8 MHz	CH190 836.6 MHz	CH128 824.2 MHz		CH251 848.8 MHz	CH190 836.6 MHz	CH128 824.2 MHz
GSM Speech	34.00	33.09	33.08	32.99				
GPRS 1 Txslot	34.00	33.12	33.09	32.99	-9.03	24.09	24.06	23.96
GPRS 2 Txslots	30.50	29.72	29.65	29.51	-6.02	23.70	23.63	23.49
GPRS 3 Txslots	28.50	27.66	27.59	27.47	-4.26	23.40	23.33	23.21
GPRS 4 Txslots	28.00	27.06	27.02	26.86	-3.01	24.05	24.01	23.85
EGPRS GMSK 1 Txslot	34.00	33.09	33.07	32.98	-9.03	24.06	24.04	23.95
EGPRS GMSK 2 Txslots	30.50	29.70	29.63	29.50	-6.02	23.68	23.61	23.48
EGPRS GMSK 3 Txslots	28.50	27.64	27.57	27.46	-4.26	23.38	23.31	23.20
EGPRS GMSK 4 Txslots	28.00	27.04	27.00	26.85	-3.01	24.03	23.99	23.84
EGPRS 8PSK 1 Txslot	27.00	26.27	26.06	25.95	-9.03	17.24	17.03	16.92
EGPRS 8PSK 2 Txslots	26.00	25.06	25.37	25.22	-6.02	19.04	19.35	19.20
EGPRS 8PSK 3 Txslots	25.50	24.46	24.45	24.29	-4.26	20.20	20.19	20.03
EGPRS 8PSK 4 Txslots	24.25	23.19	23.11	23.02	-3.01	20.18	20.10	20.01

Table 11-2 PCS1900 #1

PCS1900 #1								
Config	Tune-up	Measured Power (dBm)			Calculation	Frame Burst Power (dBm)		
		CH810 1909.8 MHz	CH661 1880 MHz	CH512 1850.2 MHz		CH810 1909.8 MHz	CH661 1880 MHz	CH512 1850.2 MHz
GSM Speech	31.00	30.11	30.16	30.25				
GPRS 1 Txslot	31.00	30.13	30.16	30.25	-9.03	21.10	21.13	21.22
GPRS 2 Txslots	28.00	27.04	27.05	27.13	-6.02	21.02	21.03	21.11
GPRS 3 Txslots	26.00	24.98	24.99	25.06	-4.26	20.72	20.73	20.80
GPRS 4 Txslots	25.00	23.90	23.91	23.98	-3.01	20.89	20.90	20.97
EGPRS GMSK 1 Txslot	31.00	30.08	30.14	30.23	-9.03	21.05	21.11	21.20
EGPRS GMSK 2 Txslots	28.00	27.00	27.03	27.13	-6.02	20.98	21.01	21.11
EGPRS GMSK 3 Txslots	26.00	24.95	24.97	25.05	-4.26	20.69	20.71	20.79
EGPRS GMSK 4 Txslots	25.00	23.87	23.88	23.97	-3.01	20.86	20.87	20.96
EGPRS 8PSK 1 Txslot	26.50	25.39	25.46	25.49	-9.03	16.36	16.43	16.46
EGPRS 8PSK 2 Txslots	25.80	24.81	24.76	24.79	-6.02	18.79	18.74	18.77
EGPRS 8PSK 3 Txslots	25.50	24.23	24.16	24.18	-4.26	19.97	19.90	19.92
EGPRS 8PSK 4 Txslots	25.00	23.52	23.54	23.61	-3.01	20.51	20.53	20.60

NOTES:

Division Factors

To average the power, the division factor is as follows:

1TX-slot = 1 transmit time slot out of 8 time slots=> conducted power divided by (8/1) => -9.03dB

2TX-slots = 2 transmit time slots out of 8 time slots=> conducted power divided by (8/2) => -6.02dB

3TX-slots = 3 transmit time slots out of 8 time slots=> conducted power divided by (8/3) => -4.26dB

4TX-slots = 4 transmit time slots out of 8 time slots=> conducted power divided by (8/4) => -3.01dB

According to the conducted power as above, the body measurements are performed with 1Txslot for 850MHz and 1900MHz GPRS&EGPRS.

11.2 WCDMA Measurement result

WCDMA1900-BII #1					
Item		Tune-up	Measured Power (dBm)		
			CH9538 1907.6 MHz	CH9400 1880 MHz	CH9262 1852.4 MHz
WCDMA	RMC	24.00	22.95	22.89	22.84
HSUPA	subtest1	21.00	19.80	19.82	19.77
	subtest2	21.00	19.76	19.83	19.71
	subtest3	22.00	20.79	20.81	20.75
	subtest4	21.00	19.30	19.33	19.26
	subtest5	22.00	20.64	20.73	20.69
HSPA+	\	22.00	20.69	20.63	20.55
DC-HSDPA	subtest1	22.00	21.52	21.48	21.42
	subtest2	22.00	21.53	21.49	21.41
	subtest3	22.00	21.51	21.50	21.39
	subtest4	22.00	21.51	21.49	21.43

WCDMA850-BV #1					
Item		Tune-up	Measured Power (dBm)		
			CH4233 846.6 MHz	CH4182 835.4 MHz	CH4132 826.4 MHz
WCDMA	RMC	24.50	23.18	23.13	23.23
HSUPA	subtest1	21.50	19.96	19.89	20.06
	subtest2	21.50	19.99	19.91	20.04
	subtest3	22.50	20.98	20.90	21.05
	subtest4	21.00	19.46	19.39	19.57
	subtest5	22.00	20.83	20.89	20.94
HSPA+	\	22.00	20.76	20.73	20.82
DC-HSDPA	subtest1	22.00	21.63	21.55	21.65
	subtest2	22.00	21.64	21.56	21.67
	subtest3	22.00	21.63	21.55	21.68
	subtest4	22.00	21.65	21.54	21.67

11.3 LTE Measurement result

Table 11-3 LTE1900-FDD2 #1

LTE1900-FDD2 #1									
SN	BandWidth	RB No./Start	Channel	Tune-up	Measured Power (dBm) & MPR				
					QPSK		16QAM		
					Measured Power	MPR	Measured Power	MPR	
1.4MHz	1H		19193	24	22.92	0	21.89	1	
			18900	24	22.91	0	22.24	1	
			18607	24	22.90	0	21.91	1	
	1M		19193	24	23.00	0	21.99	1	
			18900	24	23.10	0	22.37	1	
			18607	24	23.50	0	22.06	1	
	1L		19193	24	22.84	0	21.88	1	
			18900	24	22.87	0	22.23	1	
			18607	24	22.90	0	21.89	1	
	3H		19193	24	22.94	0	21.88	1	
			18900	24	22.98	0	22.10	1	
			18607	24	22.90	0	22.12	1	
	3M		19193	24	22.96	0	21.95	1	
			18900	24	22.97	0	22.14	1	
			18607	24	22.99	0	22.16	1	
	3L		19193	24	22.90	0	21.90	1	
			18900	24	22.94	0	22.10	1	
			18607	24	22.86	0	22.12	1	
	6		19193	24	21.90	1	21.02	2	
			18900	24	21.99	1	20.91	2	
			18607	24	21.91	1	21.16	2	
	3MHz	1H		19185	24	22.93	0	21.74	1
				18900	24	22.94	0	22.26	1
				18615	24	22.90	0	21.89	1
		1M		19185	24	23.08	0	21.86	1
				18900	24	23.06	0	22.41	1
				18615	24	23.09	0	22.09	1
1L			19185	24	22.68	0	21.76	1	
			18900	24	22.71	0	22.28	1	
			18615	24	22.90	0	21.96	1	
8H			19185	24	21.92	1	20.98	2	
			18900	24	21.97	1	21.01	2	
			18615	24	21.93	1	21.01	2	
8M			19185	24	21.89	1	21.03	2	
			18900	24	21.97	1	21.06	2	
			18615	24	21.91	1	21.00	2	
8L			19185	24	21.89	1	20.98	2	
			18900	24	21.92	1	21.06	2	
			18615	24	21.93	1	20.98	2	
15			19185	24	21.85	1	20.94	2	
			18900	24	21.91	1	20.98	2	
			18615	24	21.87	1	20.90	2	
5MHz		1H		19175	24	22.81	0	21.86	1
				18900	24	22.92	0	21.98	1
				18625	24	22.83	0	22.28	1
		1M		19175	24	23.05	0	22.08	1
				18900	24	23.18	0	22.21	1
				18625	24	23.07	0	22.59	1
	1L		19175	24	22.79	0	21.81	1	
			18900	24	22.93	0	21.96	1	
			18625	24	22.85	0	22.31	1	
	12H		19175	24	21.79	1	20.89	2	
			18900	24	22.02	1	20.92	2	
			18625	24	21.83	1	21.10	2	
	12M		19175	24	21.90	1	20.98	2	
			18900	24	21.91	1	21.02	2	
			18625	24	21.92	1	21.14	2	
	12L		19175	24	21.88	1	20.97	2	
			18900	24	21.89	1	20.98	2	
			18625	24	21.85	1	21.07	2	
	25		19175	24	21.87	1	20.83	2	
			18900	24	21.93	1	20.89	2	
			18625	24	21.93	1	21.00	2	

10MHz	1H	19150	24	22.80	0	21.84	1	
		18900	24	22.90	0	21.84	1	
		18650	24	22.96	0	22.23	1	
	1M	19150	24	22.92	0	21.88	1	
		18900	24	23.00	0	21.83	1	
		18650	24	23.02	0	22.36	1	
	1L	19150	24	22.87	0	21.82	1	
		18900	24	22.89	0	21.79	1	
		18650	24	22.90	0	22.21	1	
	25H	19150	24	21.79	1	20.86	2	
		18900	24	21.97	1	20.97	2	
		18650	24	21.94	1	21.00	2	
	25M	19150	24	21.89	1	20.94	2	
		18900	24	21.94	1	20.98	2	
		18650	24	21.92	1	21.00	2	
	25L	19150	24	21.91	1	20.99	2	
		18900	24	21.94	1	20.95	2	
		18650	24	21.90	1	20.96	2	
	50	19150	24	21.91	1	20.87	2	
		18900	24	21.89	1	20.89	2	
		18650	24	21.89	1	20.96	2	
	15MHz	1H	19125	24	22.76	0	22.10	1
			18900	24	22.75	0	21.73	1
			18675	24	22.86	0	22.13	1
		1M	19125	24	22.94	0	22.21	1
			18900	24	22.92	0	21.82	1
			18675	24	22.97	0	22.25	1
1L		19125	24	22.84	0	22.22	1	
		18900	24	22.84	0	21.69	1	
		18675	24	22.86	0	22.14	1	
36H		19125	24	21.86	1	20.86	2	
		18900	24	21.97	1	20.98	2	
		18675	24	21.92	1	21.05	2	
36M		19125	24	21.89	1	20.87	2	
		18900	24	21.97	1	20.99	2	
		18675	24	21.93	1	20.98	2	
36L		19125	24	21.89	1	20.90	2	
		18900	24	21.99	1	20.99	2	
		18675	24	21.90	1	20.99	2	
75		19125	24	21.86	1	20.81	2	
		18900	24	21.96	1	20.96	2	
		18675	24	21.94	1	20.97	2	
20MHz		1H	19100	24	22.56	0	21.99	1
			18900	24	22.59	0	22.03	1
			18700	24	22.67	0	22.13	1
		1M	19100	24	23.03	0	22.39	1
			18900	24	23.04	0	22.38	1
			18700	24	23.05	0	22.53	1
	1L	19100	24	22.59	0	22.05	1	
		18900	24	22.62	0	21.95	1	
		18700	24	22.61	0	22.08	1	
	50H	19100	24	21.62	1	20.66	2	
		18900	24	21.91	1	20.81	2	
		18700	24	21.90	1	20.90	2	
	50M	19100	24	21.87	1	20.88	2	
		18900	24	21.92	1	20.89	2	
		18700	24	21.91	1	20.94	2	
	50L	19100	24	21.86	1	20.86	2	
		18900	24	21.96	1	20.92	2	
		18700	24	21.84	1	20.89	2	
	100	19100	24	21.78	1	20.75	2	
		18900	24	21.94	1	20.96	2	
		18700	24	21.88	1	20.93	2	

Table 11-4 LTE1700-FDD4 #1

LTE1700-FDD4 #1									
SN	BandWidth	RB No./Start	Channel	Tune-up	Measured Power (dBm) & MPR				
					QPSK		16QAM		
					Measured Power	MPR	Measured Power	MPR	
1.4MHz	1H		20393	24	23.00	0	21.92	1	
			20175	24	22.41	0	21.92	1	
			19957	24	22.56	0	22.23	1	
	1M		20393	24	23.12	0	22.07	1	
			20175	24	23.16	0	22.13	1	
			19957	24	23.06	0	22.42	1	
	1L		20393	24	22.95	0	21.90	1	
			20175	24	22.89	0	21.94	1	
			19957	24	22.86	0	22.24	1	
	3H		20393	24	22.94	0	22.13	1	
			20175	24	22.92	0	21.94	1	
			19957	24	22.93	0	22.16	1	
	3M		20393	24	23.03	0	22.17	1	
			20175	24	23.00	0	21.98	1	
			19957	24	22.99	0	22.17	1	
	3L		20393	24	22.96	0	22.10	1	
			20175	24	22.92	0	21.93	1	
			19957	24	22.95	0	22.13	1	
	6		20393	24	22.01	1	21.14	2	
			20175	24	21.95	1	21.06	2	
			19957	24	21.95	1	20.85	2	
	3MHz	1H		20385	24	22.57	0	21.89	1
				20175	24	22.34	0	21.74	1
				19965	24	22.58	0	22.32	1
		1M		20385	24	23.17	0	22.12	1
				20175	24	23.10	0	21.92	1
				19965	24	23.08	0	22.46	1
1L			20385	24	22.77	0	21.97	1	
			20175	24	22.97	0	21.79	1	
			19965	24	22.90	0	22.27	1	
8H			20385	24	22.01	1	21.01	2	
			20175	24	21.94	1	21.01	2	
			19965	24	21.90	1	21.03	2	
8M			20385	24	22.02	1	21.07	2	
			20175	24	21.99	1	21.08	2	
			19965	24	21.95	1	21.10	2	
8L			20385	24	22.00	1	21.04	2	
			20175	24	21.94	1	21.06	2	
			19965	24	21.96	1	21.06	2	
15			20385	24	21.95	1	20.95	2	
			20175	24	21.92	1	20.95	2	
			19965	24	21.94	1	20.97	2	
5MHz		1H		20375	24	22.92	0	21.97	1
				20175	24	22.83	0	21.93	1
				19975	24	22.98	0	22.35	1
		1M		20375	24	23.13	0	22.20	1
				20175	24	23.13	0	22.23	1
				19975	24	23.09	0	22.62	1
	1L		20375	24	22.87	0	21.98	1	
			20175	24	22.88	0	21.99	1	
			19975	24	22.84	0	22.37	1	
	12H		20375	24	21.90	1	20.98	2	
			20175	24	21.85	1	20.95	2	
			19975	24	21.88	1	21.09	2	
	12M		20375	24	22.00	1	21.08	2	
			20175	24	21.96	1	21.04	2	
			19975	24	21.96	1	21.15	2	
	12L		20375	24	21.89	1	20.97	2	
			20175	24	21.86	1	20.96	2	
			19975	24	21.90	1	21.08	2	
	25		20375	24	21.95	1	20.90	2	
			20175	24	21.86	1	20.90	2	
			19975	24	21.91	1	20.99	2	

10MHz	1H	20350	24	22.20	0	22.24	1	
		20175	24	22.35	0	21.81	1	
		20000	24	22.73	0	21.85	1	
	1M	20350	24	23.05	0	22.35	1	
		20175	24	23.04	0	21.97	1	
		20000	24	23.06	0	21.97	1	
	1L	20350	24	22.99	0	22.26	1	
		20175	24	22.16	0	21.92	1	
		20000	24	22.92	0	21.88	1	
	25H	20350	24	21.92	1	20.97	2	
		20175	24	21.88	1	20.95	2	
		20000	24	21.95	1	21.00	2	
	25M	20350	24	21.95	1	21.00	2	
		20175	24	21.97	1	21.04	2	
		20000	24	22.01	1	21.05	2	
	25L	20350	24	21.94	1	21.00	2	
		20175	24	21.92	1	20.99	2	
		20000	24	21.97	1	20.98	2	
	50	20350	24	21.91	1	20.94	2	
		20175	24	21.88	1	20.92	2	
		20000	24	22.01	1	20.99	2	
	15MHz	1H	20325	24	22.90	0	22.23	1
			20175	24	22.84	0	21.68	1
			20025	24	22.88	0	22.10	1
		1M	20325	24	23.07	0	22.43	1
			20175	24	23.02	0	21.86	1
			20025	24	23.08	0	22.38	1
1L		20325	24	22.94	0	22.30	1	
		20175	24	22.92	0	21.81	1	
		20025	24	22.97	0	22.26	1	
36H		20325	24	21.97	1	20.98	2	
		20175	24	21.96	1	20.96	2	
		20025	24	21.95	1	21.03	2	
36M		20325	24	22.04	1	21.03	2	
		20175	24	22.01	1	21.03	2	
		20025	24	21.98	1	21.07	2	
36L		20325	24	22.04	1	21.02	2	
		20175	24	21.98	1	20.98	2	
		20025	24	21.98	1	21.08	2	
75		20325	24	22.02	1	21.01	2	
		20175	24	21.95	1	20.95	2	
		20025	24	21.98	1	21.02	2	
20MHz		1H	20300	24	22.71	0	22.13	1
			20175	24	22.58	0	21.97	1
			20050	24	22.64	0	22.08	1
		1M	20300	24	23.14	0	22.55	1
			20175	24	23.11	0	22.44	1
			20050	24	23.12	0	22.64	1
	1L	20300	24	22.76	0	22.14	1	
		20175	24	22.73	0	22.17	1	
		20050	24	22.72	0	22.26	1	
	50H	20300	24	21.93	1	20.93	2	
		20175	24	21.87	1	20.82	2	
		20050	24	22.03	1	21.06	2	
	50M	20300	24	22.00	1	21.02	2	
		20175	24	21.99	1	20.99	2	
		20050	24	22.04	1	21.09	2	
	50L	20300	24	22.09	1	21.11	2	
		20175	24	21.93	1	20.92	2	
		20050	24	22.05	1	21.09	2	
	100	20300	24	22.05	1	21.05	2	
		20175	24	21.90	1	20.88	2	
		20050	24	22.03	1	21.07	2	

Table 11-5 LTE850-FDD5 #1

LTE850-FDD5 #1								
BandWidth	RB No./Start	Channel	Tune-up	Measured Power (dBm) & MPR				
				QPSK		16QAM		
				Measured Power	MPR	Measured Power	MPR	
1.4MHz	1H	20643	24	22.74	0	21.81	1	
		20525	24	22.71	0	21.97	1	
		20407	24	22.72	0	21.70	1	
	1M	20643	24	22.75	0	22.03	1	
		20525	24	22.78	0	21.92	1	
		20407	24	22.85	0	21.80	1	
	1L	20643	24	22.63	0	21.80	1	
		20525	24	22.65	0	22.00	1	
		20407	24	22.13	0	21.68	1	
	3H	20643	24	22.72	0	21.84	1	
		20525	24	22.69	0	21.94	1	
		20407	24	22.71	0	21.83	1	
	3M	20643	24	22.83	0	21.87	1	
		20525	24	22.79	0	21.93	1	
		20407	24	22.78	0	21.86	1	
	3L	20643	24	22.77	0	21.84	1	
		20525	24	22.77	0	21.90	1	
		20407	24	22.71	0	21.87	1	
	6	20643	24	21.73	1	20.91	2	
		20525	24	21.71	1	20.66	2	
		20407	24	21.75	1	20.89	2	
	3MHz	1H	20635	24	22.83	0	22.21	1
			20525	24	22.71	0	21.66	1
			20415	24	22.87	0	21.71	1
		1M	20635	24	22.73	0	21.75	1
			20525	24	22.71	0	21.85	1
			20415	24	22.78	0	21.83	1
1L		20635	24	22.74	0	22.15	1	
		20525	24	22.72	0	21.79	1	
		20415	24	22.75	0	21.69	1	
8H		20635	24	21.73	1	20.91	2	
		20525	24	21.76	1	20.81	2	
		20415	24	21.72	1	20.89	2	
8M		20635	24	21.75	1	20.95	2	
		20525	24	21.78	1	20.84	2	
		20415	24	21.85	1	20.98	2	
8L		20635	24	21.75	1	20.91	2	
		20525	24	21.73	1	20.79	2	
		20415	24	21.81	1	20.92	2	
15		20635	24	21.78	1	20.84	2	
		20525	24	21.76	1	20.74	2	
		20415	24	21.77	1	20.79	2	
5MHz		1H	20625	24	22.66	0	21.82	1
			20525	24	22.64	0	21.76	1
			20425	24	22.73	0	22.19	1
		1M	20625	24	22.90	0	22.06	1
			20525	24	22.91	0	22.08	1
			20425	24	22.97	0	22.44	1
	1L	20625	24	22.67	0	21.78	1	
		20525	24	22.70	0	21.87	1	
		20425	24	22.70	0	22.15	1	
	12H	20625	24	21.80	1	20.92	2	
		20525	24	21.70	1	20.86	2	
		20425	24	21.76	1	20.89	2	
	12M	20625	24	21.76	1	20.90	2	
		20525	24	21.76	1	20.91	2	
		20425	24	21.82	1	21.03	2	
	12L	20625	24	21.75	1	20.90	2	
		20525	24	21.67	1	20.83	2	
		20425	24	21.74	1	20.92	2	
	25	20625	24	21.80	1	20.80	2	
		20525	24	21.74	1	20.77	2	
		20425	24	21.77	1	20.84	2	



10MHz	1H	20600	24	22.78	0	21.86	1
		20525	24	22.88	0	21.65	1
		20450	24	22.83	0	22.19	1
	1M	20600	24	22.86	0	21.81	1
		20525	24	22.91	0	21.82	1
		20450	24	22.90	0	22.28	1
	1L	20600	24	22.73	0	21.67	1
		20525	24	22.76	0	21.75	1
		20450	24	22.75	0	21.84	1
	25H	20600	24	21.85	1	20.96	2
		20525	24	21.79	1	20.83	2
		20450	24	21.93	1	20.97	2
	25M	20600	24	21.88	1	20.96	2
		20525	24	21.85	1	20.88	2
		20450	24	21.89	1	20.96	2
	25L	20600	24	21.97	1	21.02	2
		20525	24	21.77	1	20.85	2
		20450	24	21.95	1	21.02	2
	50	20600	24	21.93	1	20.97	2
		20525	24	21.79	1	20.75	2
		20450	24	21.93	1	20.99	2

Table 11-6 LTE2500-FDD7 #1

LTE2500-FDD7 #1								
BandWidth	RB No./Start	Channel	Tune-up	Measured Power (dBm) & MPR				
				QPSK		16QAM		
				Measured Power	MPR	Measured Power	MPR	
5MHz	1H	21425	24	23.29	0	22.31	1	
		21100	24	23.25	0	22.28	1	
		20775	24	23.21	0	22.56	1	
	1M	21425	24	23.47	0	22.47	1	
		21100	24	23.46	0	22.43	1	
		20775	24	23.41	0	22.77	1	
	1L	21425	24	23.31	0	22.25	1	
		21100	24	23.29	0	22.24	1	
		20775	24	23.24	0	22.57	1	
	12H	21425	24	22.23	1	21.26	2	
		21100	24	22.18	1	21.25	2	
		20775	24	22.21	1	21.32	2	
	12M	21425	24	22.29	1	21.30	2	
		21100	24	22.21	1	21.24	2	
		20775	24	22.25	1	21.35	2	
	12L	21425	24	22.31	1	21.27	2	
		21100	24	22.13	1	21.17	2	
		20775	24	22.16	1	21.24	2	
	25	21425	24	22.27	1	21.16	2	
		21100	24	22.19	1	21.18	2	
		20775	24	22.23	1	21.24	2	
	10MHz	1H	21400	24	23.36	0	22.24	1
			21100	24	23.28	0	22.14	1
			20800	24	23.25	0	22.50	1
		1M	21400	24	23.60	0	22.33	1
			21100	24	23.36	0	22.21	1
			20800	24	23.36	0	22.61	1
1L		21400	24	23.44	0	22.19	1	
		21100	24	23.35	0	22.13	1	
		20800	24	23.32	0	22.56	1	
25H		21400	24	22.25	1	21.31	2	
		21100	24	22.29	1	21.27	2	
		20800	24	22.34	1	21.35	2	
25M		21400	24	22.33	1	21.35	2	
		21100	24	22.27	1	21.26	2	
		20800	24	22.26	1	21.28	2	
25L		21400	24	22.37	1	21.38	2	
		21100	24	22.28	1	21.22	2	
		20800	24	22.18	1	21.20	2	
50		21400	24	22.27	1	21.25	2	
		21100	24	22.25	1	21.21	2	
		20800	24	22.22	1	21.22	2	
15MHz		1H	21375	24	23.24	0	22.47	1
			21100	24	23.23	0	22.49	1
			20825	24	23.08	0	21.88	1
		1M	21375	24	23.43	0	22.54	1
			21100	24	23.33	0	22.56	1
			20825	24	23.29	0	22.09	1
	1L	21375	24	23.33	0	22.47	1	
		21100	24	23.29	0	22.44	1	
		20825	24	23.22	0	22.06	1	
	36H	21375	24	22.33	1	21.28	2	
		21100	24	22.32	1	21.28	2	
		20825	24	22.32	1	21.27	2	
	36M	21375	24	22.46	1	21.41	2	
		21100	24	22.34	1	21.30	2	
		20825	24	22.32	1	21.29	2	
	36L	21375	24	22.45	1	21.44	2	
		21100	24	22.40	1	21.26	2	
		20825	24	22.27	1	21.21	2	
	75	21375	24	22.41	1	21.33	2	
		21100	24	22.33	1	21.27	2	
		20825	24	22.29	1	21.25	2	



20MHz	1H	21350	24	23.04	0	22.36	1
		21100	24	23.02	0	22.27	1
		20850	24	22.99	0	22.27	1
	1M	21350	24	23.56	0	22.71	1
		21100	24	23.43	0	22.67	1
		20850	24	23.44	0	22.78	1
	1L	21350	24	23.10	0	22.38	1
		21100	24	23.08	0	22.24	1
		20850	24	23.08	0	22.46	1
	50H	21350	24	22.12	1	21.06	2
		21100	24	22.28	1	21.21	2
		20850	24	22.14	1	21.12	2
	50M	21350	24	22.28	1	21.22	2
		21100	24	22.25	1	21.22	2
		20850	24	22.23	1	21.22	2
	50L	21350	24	22.25	1	21.25	2
		21100	24	22.22	1	21.14	2
		20850	24	22.04	1	21.04	2
	100	21350	24	22.19	1	21.15	2
		21100	24	22.28	1	21.23	2
		20850	24	22.10	1	21.12	2

Table 11-7 LTE700-FDD12 #1

LTE700-FDD12 #1								
BandWidth	RB No./Start	Channel	Tune-up	Measured Power (dBm) & MPR				
				QPSK		16QAM		
				Measured Power	MPR	Measured Power	MPR	
1.4MHz	1H	23173	24	22.55	0	21.64	1	
		23095	24	22.60	0	21.72	1	
		23017	24	22.62	0	21.62	1	
	1M	23173	24	22.76	0	21.70	1	
		23095	24	22.77	0	21.85	1	
		23017	24	22.76	0	21.74	1	
	1L	23173	24	22.52	0	21.59	1	
		23095	24	22.62	0	21.70	1	
		23017	24	22.59	0	21.60	1	
	3H	23173	24	22.64	0	21.84	1	
		23095	24	22.62	0	21.67	1	
		23017	24	22.73	0	21.83	1	
	3M	23173	24	22.67	0	21.86	1	
		23095	24	22.68	0	21.76	1	
		23017	24	22.70	0	21.87	1	
	3L	23173	24	22.60	0	21.90	1	
		23095	24	22.61	0	21.71	1	
		23017	24	22.66	0	21.79	1	
	6	23173	24	21.74	1	20.84	2	
		23095	24	21.67	1	20.81	2	
		23017	24	21.67	1	20.78	2	
	3MHz	1H	23165	24	22.66	0	21.64	1
			23095	24	22.62	0	21.53	1
			23025	24	22.71	0	22.03	1
		1M	23165	24	22.72	0	21.75	1
			23095	24	22.77	0	21.72	1
			23025	24	22.85	0	22.18	1
1L		23165	24	22.64	0	21.63	1	
		23095	24	22.59	0	21.58	1	
		23025	24	22.69	0	21.98	1	
8H		23165	24	21.72	1	20.71	2	
		23095	24	21.71	1	20.77	2	
		23025	24	21.73	1	20.77	2	
8M		23165	24	21.77	1	20.76	2	
		23095	24	21.79	1	20.83	2	
		23025	24	21.77	1	20.82	2	
8L		23165	24	21.75	1	20.72	2	
		23095	24	21.71	1	20.80	2	
		23025	24	21.71	1	20.77	2	
15		23165	24	21.69	1	20.61	2	
		23095	24	21.70	1	20.70	2	
		23025	24	21.71	1	20.73	2	
5MHz		1H	23155	24	22.56	0	21.66	1
			23095	24	22.60	0	21.69	1
			23035	24	22.57	0	22.08	1
		1M	23155	24	22.85	0	21.89	1
			23095	24	22.88	0	21.94	1
			23035	24	22.82	0	22.33	1
	1L	23155	24	22.51	0	21.57	1	
		23095	24	22.61	0	21.74	1	
		23035	24	22.49	0	22.02	1	
	12H	23155	24	21.60	1	20.63	2	
		23095	24	21.66	1	20.75	2	
		23035	24	21.65	1	20.80	2	
	12M	23155	24	21.75	1	20.76	2	
		23095	24	21.72	1	20.80	2	
		23035	24	21.74	1	20.84	2	
	12L	23155	24	21.70	1	20.69	2	
		23095	24	21.65	1	20.73	2	
		23035	24	21.65	1	20.79	2	
	25	23155	24	21.70	1	20.61	2	
		23095	24	21.71	1	20.69	2	
		23035	24	21.68	1	20.69	2	



10MHz	1H	23130	24	22.68	0	22.00	1
		23095	24	22.56	0	21.58	1
		23060	24	22.62	0	21.54	1
	1M	23130	24	22.73	0	22.04	1
		23095	24	22.69	0	21.75	1
		23060	24	22.73	0	21.70	1
	1L	23130	24	22.64	0	21.99	1
		23095	24	22.59	0	21.64	1
		23060	24	22.58	0	21.52	1
	25H	23130	24	21.60	1	20.63	2
		23095	24	21.73	1	20.79	2
		23060	24	21.77	1	20.79	2
	25M	23130	24	21.68	1	20.67	2
		23095	24	21.74	1	20.82	2
		23060	24	21.76	1	20.74	2
	25L	23130	24	21.65	1	20.64	2
		23095	24	21.72	1	20.76	2
		23060	24	21.73	1	20.70	2
	50	23130	24	21.65	1	20.61	2
		23095	24	21.75	1	20.73	2
		23060	24	21.77	1	20.74	2

Table 11-8 LTE750-FDD13 #1

LTE750-FDD13 #1								
BandWidth	RB No./Start	Channel	Tune-up	Measured Power (dBm) & MPR				
				QPSK		16QAM		
				Measured Power	MPR	Measured Power	MPR	
5MHz	1H	23255	24	22.65	0	21.68	1	
		23230	24	22.71	0	21.76	1	
		23205	24	22.66	0	22.11	1	
	1M	23255	24	22.87	0	21.91	1	
		23230	24	22.95	0	21.96	1	
		23205	24	22.88	0	22.31	1	
	1L	23255	24	22.67	0	21.71	1	
		23230	24	22.73	0	21.73	1	
		23205	24	22.60	0	22.04	1	
	12H	23255	24	21.66	1	20.77	2	
		23230	24	21.72	1	20.84	2	
		23205	24	21.70	1	20.91	2	
	12M	23255	24	21.72	1	20.81	2	
		23230	24	21.74	1	20.86	2	
		23205	24	21.74	1	20.94	2	
	12L	23255	24	21.66	1	20.77	2	
		23230	24	21.68	1	20.84	2	
		23205	24	21.66	1	20.82	2	
	25	23255	24	21.67	1	20.64	2	
		23230	24	21.73	1	20.75	2	
		23205	24	21.75	1	20.80	2	
	10MHz	1H	H	24		0		1
			M	24		0		1
			23230	24	22.74	0	21.98	1
		1M	H	24		0		1
			M	24		0		1
			23230	24	22.90	0	22.23	1
1L		H	24		0		1	
		M	24		0		1	
		23230	24	22.74	0	21.96	1	
25H		H	24		1		2	
		M	24		1		2	
		23230	24	21.79	1	20.83	2	
25M		H	24		1		2	
		M	24		1		2	
		23230	24	21.75	1	20.86	2	
25L		H	24		1		2	
		M	24		1		2	
		23230	24	21.69	1	20.78	2	
50	H	24		1		2		
	M	24		1		2		
	23230	24	21.78	1	20.81	2		

11.4 Wi-Fi and BT Measurement result

The output power of BT antenna is as following:

Table 11-9 Bluetooth Power

Bluetooth Power				
Mode	Channel	Frequency	Tune-up	Measured
GFSK	78	2480 MHz	7	6.3
	39	2441 MHz	7	6.92
	0	2402 MHz	7	6.52
EDR2M-4_DQPSK	78	2480 MHz	6	4.95
	39	2441 MHz	6	5.71
	0	2402 MHz	6	5.22
EDR3M-8DPSK	78	2480 MHz	6	5.04
	39	2441 MHz	6	5.82
	0	2402 MHz	6	5.35



The average conducted power for Wi-Fi is as following:

Table 11-10 WLAN2450 #1

WLAN2450 #1						
Band	Mode	Channel	Frequency	Data Rate	Tune-up	Measured
WLAN 2.4G 20M	802.11b	11	2462 MHz	1Mbps	10.00	9.78
		6	2437 MHz		11.00	10.89
		1	2412 MHz		10.00	9.09
		11	2462 MHz	2Mbps	/	/
		6	2437 MHz		11.00	10.56
		1	2412 MHz		/	/
		11	2462 MHz	5.5Mbps	/	/
		6	2437 MHz		11.00	10.57
		1	2412 MHz		/	/
		11	2462 MHz	11Mbps	/	/
		6	2437 MHz		11.00	10.54
		1	2412 MHz		/	/
	802.11g	6Mbps	11	2462 MHz	8.50	8.44
			6	2437 MHz	8.50	8.39
			1	2412 MHz	8.50	7.09
		9Mbps	11	2462 MHz	8.50	6.67
			6	2437 MHz	/	/
			1	2412 MHz	/	/
		12Mbps	11	2462 MHz	8.50	7.46
			6	2437 MHz	/	/
			1	2412 MHz	/	/
		18Mbps	11	2462 MHz	8.50	7.45
			6	2437 MHz	/	/
			1	2412 MHz	/	/
		24Mbps	11	2462 MHz	8.50	6.61
			6	2437 MHz	/	/
			1	2412 MHz	/	/
		36Mbps	11	2462 MHz	8.50	6.54
			6	2437 MHz	/	/
			1	2412 MHz	/	/
		48Mbps	11	2462 MHz	8.50	7.37
			6	2437 MHz	/	/
			1	2412 MHz	/	/
		54Mbps	11	2462 MHz	8.50	7.36
			6	2437 MHz	/	/
			1	2412 MHz	/	/
	802.11n	MCS0	11	2462 MHz	8.00	7.73
			6	2437 MHz	8.00	6.95
			1	2412 MHz	8.00	6.51
		MCS1	11	2462 MHz	8.00	7.62
			6	2437 MHz	/	/
			1	2412 MHz	/	/
		MCS2	11	2462 MHz	8.00	7.68
			6	2437 MHz	/	/
			1	2412 MHz	/	/
		MCS3	11	2462 MHz	8.00	7.42
			6	2437 MHz	/	/
			1	2412 MHz	/	/



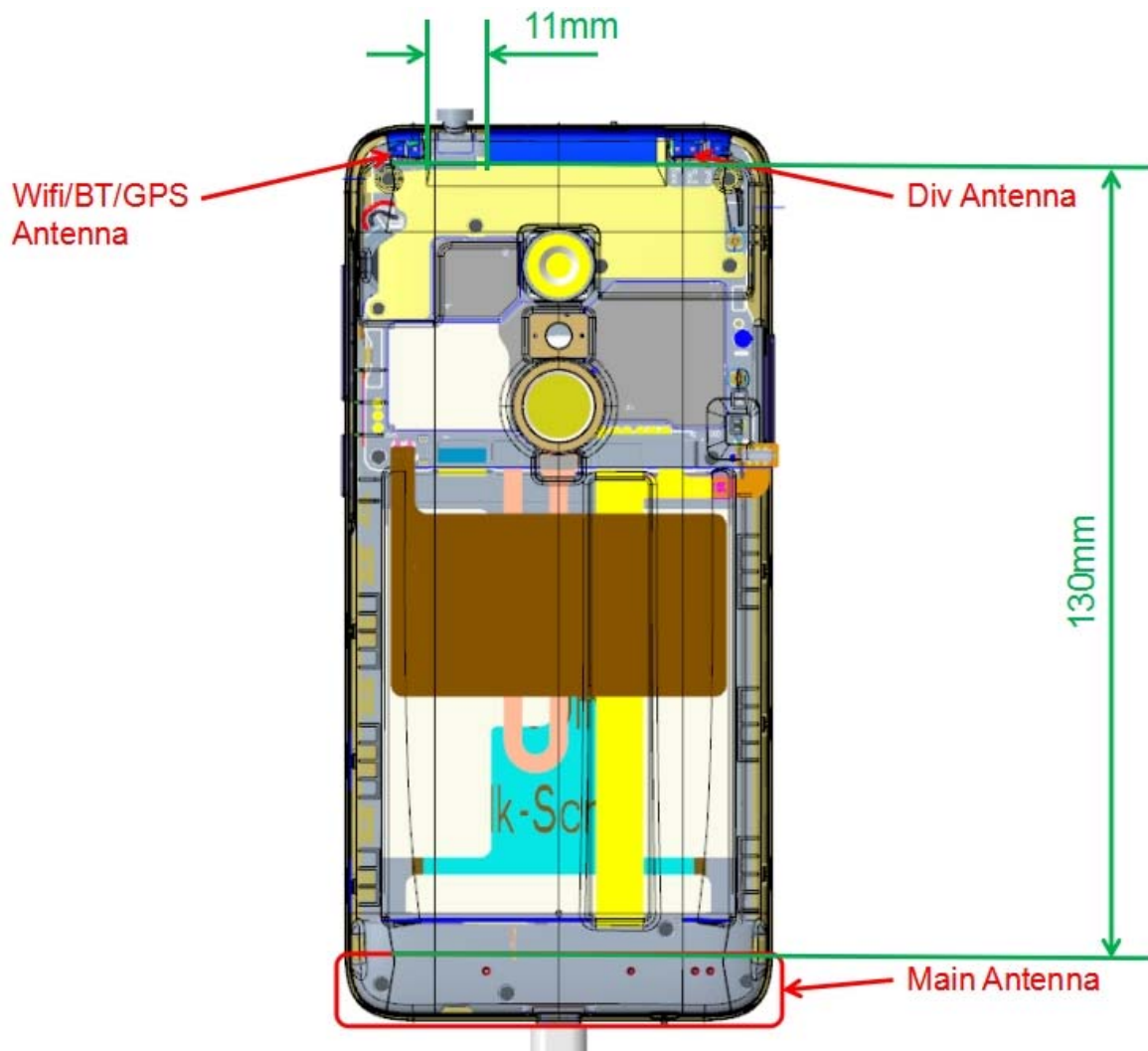
	20M	11	2462 MHz	MCS4	8.00	7.59		
		6	2437 MHz		/	/		
		1	2412 MHz		/	/		
				11	2462 MHz	MCS5	8.00	6.56
				6	2437 MHz		/	/
				1	2412 MHz		/	/
				11	2462 MHz	MCS6	8.00	6.59
				6	2437 MHz		/	/
				1	2412 MHz		/	/
				11	2462 MHz	MCS7	8.00	6.31
				6	2437 MHz		/	/
				1	2412 MHz		/	/
WLAN 2.4G 40M	802.11n 40M	9	2452 MHz	MCS0	8.00	7.75		
		6	2437 MHz		8.00	7.26		
		3	2422 MHz		8.00	6.99		
				9	2452 MHz	MCS1	8.00	7.72
				6	2437 MHz		/	/
				3	2422 MHz		/	/
				9	2452 MHz	MCS2	8.00	7.69
				6	2437 MHz		/	/
				3	2422 MHz		/	/
				9	2452 MHz	MCS3	8.00	7.63
				6	2437 MHz		/	/
				3	2422 MHz		/	/
				9	2452 MHz	MCS4	8.00	7.37
				6	2437 MHz		/	/
				3	2422 MHz		/	/
				9	2452 MHz	MCS5	8.00	6.39
				6	2437 MHz		/	/
				3	2422 MHz		/	/
				9	2452 MHz	MCS6	8.00	6.43
				6	2437 MHz		/	/
				3	2422 MHz		/	/
				9	2452 MHz	MCS7	8.00	6.38
				6	2437 MHz		/	/
				3	2422 MHz		/	/

12 Simultaneous TX SAR Considerations

12.1 Introduction

The following procedures adopted from “FCC SAR Considerations for Cell Phones with Multiple Transmitters” are applicable to handsets with built-in unlicensed transmitters such as 802.11 a/b/g and Bluetooth devices which may simultaneously transmit with the licensed transmitter. For this device, the BT and Wi-Fi can transmit simultaneous with other transmitters.

12.2 Transmit Antenna Separation Distances



Picture 12.1 Antenna Locations

12.3 SAR Measurement Positions

According to the KDB941225 D06 Hot Spot SAR v01, the edges with less than 2.5 cm distance to the antennas need to be tested for SAR.

SAR measurement positions						
Mode	Front	Rear	Left edge	Right edge	Top edge	Bottom edge
Main antenna	Yes	Yes	Yes	Yes	No	Yes
WLAN	Yes	Yes	No	Yes	Yes	No

12.4 Standalone SAR Test Exclusion Considerations

Standalone 1-g head or body SAR evaluation by measurement or numerical simulation is not required when the corresponding SAR Exclusion Threshold condition, listed below, is satisfied. The 1-g SAR test exclusion threshold for 100 MHz to 6 GHz at test separation distances ≤ 50 mm are determined by:

$[(\text{max. power of channel, including tune-up tolerance, mW}) / (\text{min. test separation distance, mm})] \cdot [\sqrt{f(\text{GHz})}] \leq 3.0$ for 1-g SAR, where

- $f(\text{GHz})$ is the RF channel transmit frequency in GHz
- Power and distance are rounded to the nearest mW and mm before calculation
- The result is rounded to one decimal place for comparison

Table 12.1: Standalone SAR test exclusion considerations

Band/Mode	F(GHz)	Position	SAR test exclusion threshold (mW)	RF output power		SAR test exclusion
				dBm	mW	
Bluetooth	2.441	Head	9.6	7	5.01	Yes
		Body	19.2	7	5.01	Yes
2.4GHz WLAN 802.11 b	2.45	Head	9.58	11	12.59	No
		Body	19.17	11	12.59	Yes

Note: The result of WLAN Head is lower than 0.01

13 Evaluation of Simultaneous

Table 13.1: The sum of reported SAR values for main antenna and WiFi

	Position	Main antenna	WiFi	Sum
Highest reported SAR value for Head	Left hand, Touch cheek	0.23	<0.01	0.23
Highest reported SAR value for Body	Bottom	1.27	/	1.27

Table 13.2: The sum of reported SAR values for main antenna and BT

	Position	Main antenna	BT	Sum
Maximum reported SAR value for Head	Left hand, Touch cheek	0.23	0.21	0.44
Maximum reported SAR value for Body	Bottom	1.27	0.10	1.37

[1] - Estimated SAR for Bluetooth (see the table 13.3)

Table 13.3: Estimated SAR for WLAN and Bluetooth

Mode/Band	F (GHz)	Position	Distance (mm)	Upper limit of power *		Estimated _{1g} (W/kg)
				dBm	mW	
Bluetooth	2.441	Head	5	7	5.01	0.21
Bluetooth	2.441	Body	10	7	5.01	0.10
WLAN	2.441	Head	5	11	12.59	0.52

* - Maximum possible output power declared by manufacturer

When standalone SAR test exclusion applies to an antenna that transmits simultaneously with other antennas, the standalone SAR must be estimated according to following to determine simultaneous transmission SAR test exclusion:

(max. power of channel, including tune-up tolerance, mW)/(min. test separation distance, mm)·[√f(GHz)/x] W/kg for test separation distances ≤ 50 mm;

where x = 7.5 for 1-g SAR.

When the minimum test separation distance is < 5 mm, a distance of 5 mm is applied to determine SAR test exclusion

Conclusion:

According to the above tables, the sum of reported SAR values is < 1.6W/kg. So the simultaneous transmission SAR with volume scans is not required.

14 SAR Test Result

It is determined by user manual for the distance between the EUT and the phantom bottom.

The distance is 10 mm and just applied to the condition of body worn accessory.

It is performed for all SAR measurements with area scan based 1-g SAR estimation (Fast SAR). A zoom scan measurement is added when the estimated 1-g SAR is the highest measured SAR in each exposure configuration, wireless mode and frequency band combination or more than 1.2W/kg.

The calculated SAR is obtained by the following formula:

$$\text{Reported SAR} = \text{Measured SAR} \times 10^{(P_{\text{Target}} - P_{\text{Measured}})/10}$$

Where P_{Target} is the power of manufacturing upper limit;

P_{Measured} is the measured power in chapter 11.

Mode	Duty Cycle
Speech for GSM850/1900	1:8.3
GPRS&EGPRS for GSM850/1900	1:8.3
WCDMA<E	1:1

14.1 Evaluation of multi-batteries and SIM slots

Note: B1: CAC2400008C1 **B2:** CAC2400009C7

We'll perform the head measurement in all bands with the primary battery depending on the evaluation of multi-batteries retest on highest value point with other battery. Then, repeat the measurement in the Body test.

frequency		Mode/Band	Side	Position	BatteryType	1g SAR (W/kg)	PowerDrift
MHz	Channel						
1880	661	PCS1900	Right	Cheek	CAC2400008C1	0.139	0.08
1880	661	PCS1900	Right	Cheek	CAC2400009C7	0.154	0.15

Note: According to the values in the above table, the battery, B2, is the primary

battery. We'll perform the head measurement with this battery and retest on highest value point

with others.

frequency		Mode/Band	Position	BatteryType	1g SAR (W/kg)	PowerDrift
MHz	Channel					
836.6	190	GSM850	Rear	CAC2400008C1	0.292	0.11
836.6	190	GSM850	Rear	CAC2400009C7	0.307	-0.17

Note: According to the values in the above table, the battery, B2, is the primary

battery. We'll perform the Body measurement with this battery and retest on highest value point

with others.

14.2 SAR results

Note: H1: CCB0046A10C1 H2: CCB0046A10C4

Table 14-1 GSM850 #1 Head

GSM850 #1 Head									
Ambient Temperature:			22.2			Liquid Temperature:			22.1
Mode	Device orientation	SAR measurement	Measured SAR [W/kg]			Reported SAR [W/kg]			
			CH251 848.8 MHz	CH190 836.6 MHz	CH128 824.2 MHz	CH251 848.8 MHz	CH190 836.6 MHz	CH128 824.2 MHz	
GSM	Tune-up		34.00	34.00	34.00	Scaling factor*			
	Slot Average Power [dBm]		33.09	33.08	32.99	1.23	1.24	1.26	
	Left Cheek	1g SAR	0.189	0.178	0.18	0.23	0.22	0.23	
		10g SAR	0.142	0.135	0.14	0.18	0.17	0.18	
		Deviation	0.14	0.09	0.1	0.14	0.09	0.10	
	Left Tilt	1g SAR		0.105			0.13		
		10g SAR		0.081			0.10		
		Deviation		-0.04			-0.04		
	Right Cheek	1g SAR		0.159			0.20		
		10g SAR		0.123			0.15		
		Deviation		0.13			0.13		
	Right Tilt	1g SAR		0.135			0.17		
		10g SAR		0.105			0.13		
		Deviation		-0.07			-0.07		
	GSM B1	Left Cheek	1g SAR	0.163			0.20		
10g SAR			0.117			0.14			
Deviation			0.15			0.15			

Table 14-2 GSM850 #1 Body

GSM850 #1 Body									
Ambient Temperature:			22.2			Liquid Temperature:			22.1
Mode	Device orientation	SAR measurement	Measured SAR [W/kg]			Reported SAR [W/kg]			
			CH251 848.8 MHz	CH190 836.6 MHz	CH128 824.2 MHz	CH251 848.8 MHz	CH190 836.6 MHz	CH128 824.2 MHz	
GPRS 1 Txslot	Tune-up		34.00	34.00	34.00	Scaling factor*			
	Slot Average Power [dBm]		33.09	33.07	32.98	1.23	1.24	1.26	
	Front	1g SAR		0.163			0.20		
		10g SAR		0.125			0.15		
		Deviation		0.09			0.09		
	Rear	1g SAR	0.267	0.307	0.294	0.33	0.38	0.37	
		10g SAR	0.204	0.232	0.223	0.25	0.29	0.28	
		Deviation	-0.09	-0.17	-0.1	-0.09	-0.17	-0.10	
	Left edge	1g SAR		0.187			0.23		
		10g SAR		0.125			0.15		
		Deviation		0.15			0.15		
	Right edge	1g SAR		0.154			0.19		
		10g SAR		0.107			0.13		
		Deviation		0.04			0.04		
	Bottom edge	1g SAR		0.076			0.09		
10g SAR			0.049			0.06			
Deviation			0.08			0.08			
EGPRS GMSK 1 Txslot	Tune-up		34.00	34.00	34.00	Scaling factor*			
	Slot Average Power [dBm]		33.09	33.07	32.98	1.23	1.24	1.26	
	Rear	1g SAR		0.282			0.35		
10g SAR			0.218			0.27			
Deviation			0.02			0.02			
GPRS 1 Txslot B1	Rear	1g SAR		0.292			0.36		
		10g SAR		0.225			0.28		
		Deviation		0.11			0.11		



Table 14-3 PCS1900 #1 Head

PCS1900 #1 Head									
Ambient Temperature:			22.2			Liquid Temperature:			22.1
Mode	Device orientation	SAR measurement	Measured SAR [W/kg]			Reported SAR [W/kg]			
			CH810 1909.8	CH661 1880 MHz	CH512 1850.2	CH810 1909.8	CH661 1880 MHz	CH512 1850.2	
GSM	Tune-up		31.00	31.00	31.00	Scaling factor*			
	Slot Average Power [dBm]		30.11	30.16	30.25	1.23	1.21	1.19	
	Left Cheek	1g SAR		0.109			0.13		
		10g SAR		0.072			0.09		
		Deviation		0.02			0.02		
	Left Tilt	1g SAR		0.083			0.10		
		10g SAR		0.053			0.06		
		Deviation		0.16			0.16		
	Right Cheek	1g SAR	0.118	0.154	0.13	0.14	0.19	0.15	
		10g SAR	0.075	0.094	0.081	0.09	0.11	0.10	
		Deviation	0.09	0.15	0.1	0.09	0.15	0.10	
	Right Tilt	1g SAR		0.067			0.08		
		10g SAR		0.044			0.05		
		Deviation		-0.14			-0.14		
	GSM B1	Right Cheek	1g SAR		0.139			0.17	
10g SAR				0.072			0.09		
Deviation				0.08			0.08		

Table 14-4 PCS1900 #1 Body

PCS1900 #1 Body									
Ambient Temperature:			22.2			Liquid Temperature:			22.1
Mode	Device orientation	SAR measurement	Measured SAR [W/kg]			Reported SAR [W/kg]			
			CH810 1909.8	CH661 1880 MHz	CH512 1850.2	CH810 1909.8	CH661 1880 MHz	CH512 1850.2	
GPRS 1 Txslot	Tune-up		31.00	31.00	31.00	Scaling factor*			
	Slot Average Power [dBm]		30.13	30.16	30.25	1.22	1.21	1.19	
	Front	1g SAR		0.247			0.30		
		10g SAR		0.135			0.16		
		Deviation		0.04			0.04		
	Rear	1g SAR		0.607			0.74		
		10g SAR		0.305			0.37		
		Deviation		0.13			0.13		
	Left edge	1g SAR		0.08			0.10		
		10g SAR		0.047			0.06		
		Deviation		0.06			0.06		
	Right edge	1g SAR		0.098			0.12		
		10g SAR		0.055			0.07		
		Deviation		0.15			0.15		
	Bottom edge	1g SAR	0.615	0.76	0.998	0.75	0.92	1.19	
		10g SAR	0.317	0.395	0.524	0.39	0.48	0.62	
		Deviation	0.09	0.12	0.03	0.09	0.12	0.03	
	EGPRS GMSK 1 Txslot	Tune-up		31.00	31.00	31.00	Scaling factor*		
		Slot Average Power [dBm]		30.08	30.14	30.23	1.23	1.22	1.19
		Bottom edge	1g SAR			0.976			1.16
			10g SAR			0.505			0.60
	Deviation			0.05			0.05		
GPRS 1 Txslot B1	Bottom edge	1g SAR			0.876			1.04	
		10g SAR			0.441			0.52	
	Deviation			0.08			0.08		