



SAR TEST REPORT

No. I17Z62077-SEM01

For

TCL Communication Ltd.

LTE/UMTS/GSM Smartphone

Model Name: 5058A

With

Hardware Version: PIO

Software Version: V1.0

FCC ID: 2ACCJB099

Issued Date: 2018-1-18



Note:

The test results in this test report relate only to the devices specified in this report. This report shall not be reproduced except in full without the written approval of CTTL.

The report must not be used by the client to claim product certification, approval, or endorsement by NVLAP, NIST, or any agency of the U.S. Government.

Test Laboratory:

CTTL, Telecommunication Technology Labs, CAICT

No. 52, Huayuan North Road, Haidian District, Beijing, P. R. China 100191.

Tel:+86(0)10-62304633-2512, Fax:+86(0)10-62304633-2504

Email: ctl_terminals@caict.ac.cn, website: www.caict.ac.cn



REPORT HISTORY

Report Number	Revision	Issue Date	Description
I17Z62077-SEM01	Rev.0	2018-1-18	Initial creation of test report



TABLE OF CONTENT

1	TEST LABORATORY	5
1.1	TESTING LOCATION	5
1.2	TESTING ENVIRONMENT	5
1.3	PROJECT DATA	5
1.4	SIGNATURE	5
2	STATEMENT OF COMPLIANCE	6
3	CLIENT INFORMATION	8
3.1	APPLICANT INFORMATION	8
3.2	MANUFACTURER INFORMATION	8
4	EQUIPMENT UNDER TEST (EUT) AND ANCILLARY EQUIPMENT (AE)	9
4.1	ABOUT EUT	9
4.2	INTERNAL IDENTIFICATION OF EUT USED DURING THE TEST	9
4.3	INTERNAL IDENTIFICATION OF AE USED DURING THE TEST	9
5	TEST METHODOLOGY	10
5.1	APPLICABLE LIMIT REGULATIONS	10
5.2	APPLICABLE MEASUREMENT STANDARDS	10
6	SPECIFIC ABSORPTION RATE (SAR)	11
6.1	INTRODUCTION	11
6.2	SAR DEFINITION	11
7	TISSUE SIMULATING LIQUIDS	12
7.1	TARGETS FOR TISSUE SIMULATING LIQUID	12
7.2	DIELECTRIC PERFORMANCE	12
8	SYSTEM VERIFICATION	19
8.1	SYSTEM SETUP	19
8.2	SYSTEM VERIFICATION	20
9	MEASUREMENT PROCEDURES	21
9.1	TESTS TO BE PERFORMED	21
9.2	GENERAL MEASUREMENT PROCEDURE	23
9.3	WCDMA MEASUREMENT PROCEDURES FOR SAR	24
9.4	SAR MEASUREMENT FOR LTE	25
9.5	BLUETOOTH & WI-FI MEASUREMENT PROCEDURES FOR SAR	25
9.6	POWER DRIFT	26
10	AREA SCAN BASED 1-G SAR	26
10.1	REQUIREMENT OF KDB	26
10.2	FAST SAR ALGORITHMS	26
11	CONDUCTED OUTPUT POWER	27



11.1	GSM MEASUREMENT RESULT	27
11.2	WCDMA MEASUREMENT RESULT	28
11.3	LTE MEASUREMENT RESULT	29
11.4	WI-FI AND BT MEASUREMENT RESULT	40
12	SIMULTANEOUS TX SAR CONSIDERATIONS	43
12.1	INTRODUCTION.....	43
12.2	TRANSMIT ANTENNA SEPARATION DISTANCES.....	43
12.3	SAR MEASUREMENT POSITIONS	44
12.4	STANDALONE SAR TEST EXCLUSION CONSIDERATIONS.....	44
13	EVALUATION OF SIMULTANEOUS.....	45
14	SAR TEST RESULT	46
14.1	EVALUATION OF MULTI-BATTERIES AND SIM SLOTS	46
14.2	SAR RESULTS	47
14.3	FULL SAR	64
14.4	WLAN EVALUATION	65
15	SAR MEASUREMENT VARIABILITY	69
16	MEASUREMENT UNCERTAINTY	70
16.1	MEASUREMENT UNCERTAINTY FOR NORMAL SAR TESTS (300MHZ~3GHZ)	70
16.2	MEASUREMENT UNCERTAINTY FOR NORMAL SAR TESTS (3~6GHZ).....	71
16.3	MEASUREMENT UNCERTAINTY FOR FAST SAR TESTS (300MHZ~3GHZ)	72
16.4	MEASUREMENT UNCERTAINTY FOR FAST SAR TESTS (3~6GHZ).....	73
17	MAIN TEST INSTRUMENTS.....	75
ANNEX A	GRAPH RESULTS.....	76
ANNEX B	SYSTEM VERIFICATION RESULTS.....	108
ANNEX C	SAR MEASUREMENT SETUP	121
ANNEX D	POSITION OF THE WIRELESS DEVICE IN RELATION TO THE PHANTOM	127
ANNEX E	EQUIVALENT MEDIA RECIPES	130
ANNEX F	SYSTEM VALIDATION	131
ANNEX G	PROBE CALIBRATION CERTIFICATE	132
ANNEX H	DIPOLE CALIBRATION CERTIFICATE.....	143
ANNEX I	ACCREDITATION CERTIFICATE.....	191

1 Test Laboratory

1.1 Testing Location

Company Name:	CTTL(Shouxiang)
Address:	No. 51 Shouxiang Science Building, Xueyuan Road, Haidian District, Beijing, P. R. China100191

1.2 Testing Environment

Temperature:	18°C~25 °C,
Relative humidity:	30%~ 70%
Ground system resistance:	< 0.5 Ω
Ambient noise & Reflection:	< 0.012 W/kg

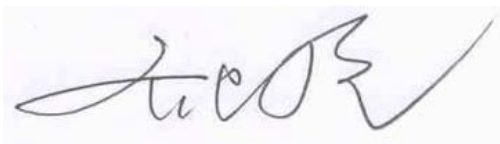
1.3 Project Data

Project Leader:	Qi Dianyuan
Test Engineer:	Lin Xiaojun
Testing Start Date:	December 25, 2017
Testing End Date:	December 30, 2017

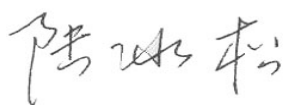
1.4 Signature



Lin Xiaojun
(Prepared this test report)



Qi Dianyuan
(Reviewed this test report)



Lu Bingsong
Deputy Director of the laboratory
(Approved this test report)

2 Statement of Compliance

The maximum results of SAR found during testing for TCL Communication Ltd. LTE/UMTS/GSM Smartphone 5058A is as follows:

Table 2.1: Highest Reported SAR (1g)

Exposure Configuration	Technology Band	Highest Reported SAR 1g (W/Kg)	Equipment Class
Head (Separation Distance 0mm)	GSM 850	0.21	PCE
	PCS 1900	0.16	
	UMTS FDD 2	0.31	
	UMTS FDD 4	0.41	
	UMTS FDD 5	0.36	
	LTE Band 2	0.35	
	LTE Band 4	0.39	
	LTE Band 5	0.21	
	LTE Band 7	0.17	
	LTE Band 12	0.26	
	LTE Band 13	0.23	
		WLAN 2.4 GHz	0.33
Hotspot (Separation Distance 10mm)	GSM 850	0.36	PCE
	PCS 1900	0.58	
	UMTS FDD 2	0.67	
	UMTS FDD 4	0.90	
	UMTS FDD 5	0.44	
	LTE Band 2	0.61	
	LTE Band 4	0.61	
	LTE Band 5	0.25	
	LTE Band 7	0.61	
	LTE Band 12	0.32	
	LTE Band 13	0.37	
		WLAN 2.4 GHz	0.09

The SAR values found for the Mobile Phone are below the maximum recommended levels of 1.6 W/Kg as averaged over any 1g tissue according to the ANSI C95.1-1992.

For body worn operation, this device has been tested and meets FCC RF exposure guidelines when used with any accessory that contains no metal and which provides a minimum separation distance of 10 mm between this device and the body of the user. Use of other accessories may not ensure compliance with FCC RF exposure guidelines.

The EUT battery must be fully charged and checked periodically during the test to ascertain uniform power output.

The measurement together with the test system set-up is described in annex C of this test report. A detailed description of the equipment under test can be found in chapter 4 of this test report.

The highest reported SAR value is obtained at the case of **(Table 2.1)**, and the values are: 0.90 **W/kg**

(1g).

Table 2.2: The sum of reported SAR values for main antenna and WiFi

	Position	Main antenna	WiFi	Sum
Highest reported SAR value for Head	Left hand, Touch cheek	0.41	0.33	0.74
Highest reported SAR value for Body	Rear	0.90	0.09	0.99

Table 2.3: The sum of reported SAR values for main antenna and BT

	Position	Main antenna	BT	Sum
Maximum reported SAR value for Head	Left hand, Touch cheek	0.41	0.19	0.60
Maximum reported SAR value for Body	Rear	0.90	0.09	0.99

[1] - Estimated SAR for Bluetooth (see the table 13.3)

According to the above tables, the highest sum of reported SAR values is 0.99 **W/kg (1g)**. The detail for simultaneous transmission consideration is described in chapter 13.



3 Client Information

3.1 Applicant Information

Company Name:	TCL Communication Ltd.
Address /Post:	5F, C building, No. 232, Liang Jing Road ZhangJiang High-Tech Park, Pudong Area Shanghai, P.R. China. 201203
City:	Shanghai
Postal Code:	201203
Country:	China
Contact Person:	Gong Zhizhou
E-mail:	zhizhou.gong@tcl.com
Telephone:	0086-21-31363544
Fax:	0086-21-61460602

3.2 Manufacturer Information

Company Name:	TCL Communication Ltd.
Address /Post:	5F, C building, No. 232, Liang Jing Road ZhangJiang High-Tech Park, Pudong Area Shanghai, P.R. China. 201203
City:	Shanghai
Postal Code:	201203
Country:	China
Contact Person:	Gong Zhizhou
E-mail:	zhizhou.gong@tcl.com
Telephone:	0086-21-31363544
Fax:	0086-21-61460602

4 Equipment Under Test (EUT) and Ancillary Equipment (AE)

4.1 About EUT

Description:	LTE/UMTS/GSM Smartphone
Model name:	5058A
Operating mode(s):	GSM 850/900/1800/1900 WCDMA850/900/1700/1900/2100 LTE B1/2/3/4/5/7/8/12/13/17/28, BT, WLAN
Tested Tx Frequency:	825 – 848.8 MHz (GSM 850)
	1850.2 – 1910 MHz (GSM 1900)
	826.4–846.6 MHz (WCDMA 850 Band V)
	1712.4 – 1752.6 MHz (WCDMA 1700 Band IV)
	1852.4–1907.6 MHz (WCDMA1900 Band II)
	1860 – 1900 MHz (LTE Band 2)
	1720 – 1745 MHz (LTE Band 4)
	824.7 – 848.3 MHz (LTE Band 5)
	2502.5 – 2567.5 MHz (LTE Band 7)
	699.7 – 715.3 MHz (LTE Band 12)
779.5 –784.5 MHz (LTE Band 13)	
2412 – 2462 MHz (Wi-Fi 2.4G)	
GPRS/EGPRS Multislot Class:	12
GPRS capability Class:	B
Test device Production information:	Production unit
Device type:	Portable device
Antenna type:	Integrated antenna
Accessories/Body-worn configurations:	Headset
Hotspot mode:	Support
Product Dimension:	L: 152.5mm W: 71.2mm overall diagonal: 168.3mm

4.2 Internal Identification of EUT used during the test

EUT			
EUTID	IMEI	HW Version	SW Version
1	015097000000603	PIO	V1.0
2	015097000000702	PIO	V1.0
3	015097000000686	PIO	V1.0

*EUT ID: is used to identify the test sample in the lab internally.

Note: It is performed to test SAR with the EUT1&2 and conducted power with the EUT3.

4.3 Internal Identification of AE used during the test

AE ID	Description	Model	SN	Manufacturer
AE1	Battery	Li-Polymer	CAC2900009C7	VEKEN
AE2	Battery	Li-Polymer	CAC2900007C1	BYD
AE3	Headset	CCB0046A10C4	/	MEIHAO
AE4	Headset	CCB0046A10C6	/	SHENGHUA

*AE ID: is used to identify the test sample in the lab internally.



5 TEST METHODOLOGY

5.1 Applicable Limit Regulations

ANSI C95.1–1992: IEEE Standard for Safety Levels with Respect to Human Exposure to Radio Frequency Electromagnetic Fields, 3 kHz to 300 GHz.

It specifies the maximum exposure limit of **1.6 W/kg** as averaged over any 1 gram of tissue for portable devices being used within 20 cm of the user in the uncontrolled environment.

5.2 Applicable Measurement Standards

IEEE 1528–2013: Recommended Practice for Determining the Peak Spatial-Average Specific Absorption Rate (SAR) in the Human Head from Wireless Communications Devices: Measurement Techniques.

KDB447498 D01 General RF Exposure Guidance v06: Mobile and Portable Devices RF Exposure Procedures and Equipment Authorization Policies.

KDB648474 D04 Handset SAR v01r03: SAR Evaluation Considerations for Wireless Handsets.

KDB941225 D01 SAR test for 3G devices v03r01: SAR Measurement Procedures for 3G Devices

KDB941225 D05 SAR for LTE Devices v02r05: SAR Evaluation Considerations for LTE Devices

KDB941225 D06 Hotspot Mode SAR v02r01: SAR Evaluation Procedures for Portable Devices with Wireless Router Capabilities

KDB248227 D01 802.11 Wi-Fi SAR v02r02: SAR GUIDANCE FOR IEEE 802.11 (Wi-Fi) TRANSMITTERS

KDB865664 D01 SAR measurement 100 MHz to 6 GHz v01r04: SAR Measurement Requirements for 100 MHz to 6 GHz.

KDB865664 D02 RF Exposure Reporting v01r02: RF Exposure Compliance Reporting and Documentation Considerations

6 Specific Absorption Rate (SAR)

6.1 Introduction

SAR is related to the rate at which energy is absorbed per unit mass in an object exposed to a radio field. The SAR distribution in a biological body is complicated and is usually carried out by experimental techniques or numerical modeling. The standard recommends limits for two tiers of groups, occupational/controlled and general population/uncontrolled, based on a person's awareness and ability to exercise control over his or her exposure. In general, occupational/controlled exposure limits are higher than the limits for general population/uncontrolled.

6.2 SAR Definition

The SAR definition is the time derivative (rate) of the incremental energy (dW) absorbed by (dissipated in) an incremental mass (dm) contained in a volume element (dv) of a given density (ρ). The equation description is as below:

$$SAR = \frac{d}{dt} \left(\frac{dW}{dm} \right) = \frac{d}{dt} \left(\frac{dW}{\rho dv} \right)$$

SAR is expressed in units of Watts per kilogram (W/kg)

SAR measurement can be either related to the temperature elevation in tissue by

$$SAR = c \left(\frac{\delta T}{\delta t} \right)$$

Where: C is the specific heat capacity, δT is the temperature rise and δt is the exposure duration, or related to the electrical field in the tissue by

$$SAR = \frac{\sigma |E|^2}{\rho}$$

Where: σ is the conductivity of the tissue, ρ is the mass density of tissue and E is the RMS electrical field strength.

However for evaluating SAR of low power transmitter, electrical field measurement is typically applied.

7 Tissue Simulating Liquids

7.1 Targets for tissue simulating liquid

Table 7.1: Targets for tissue simulating liquid

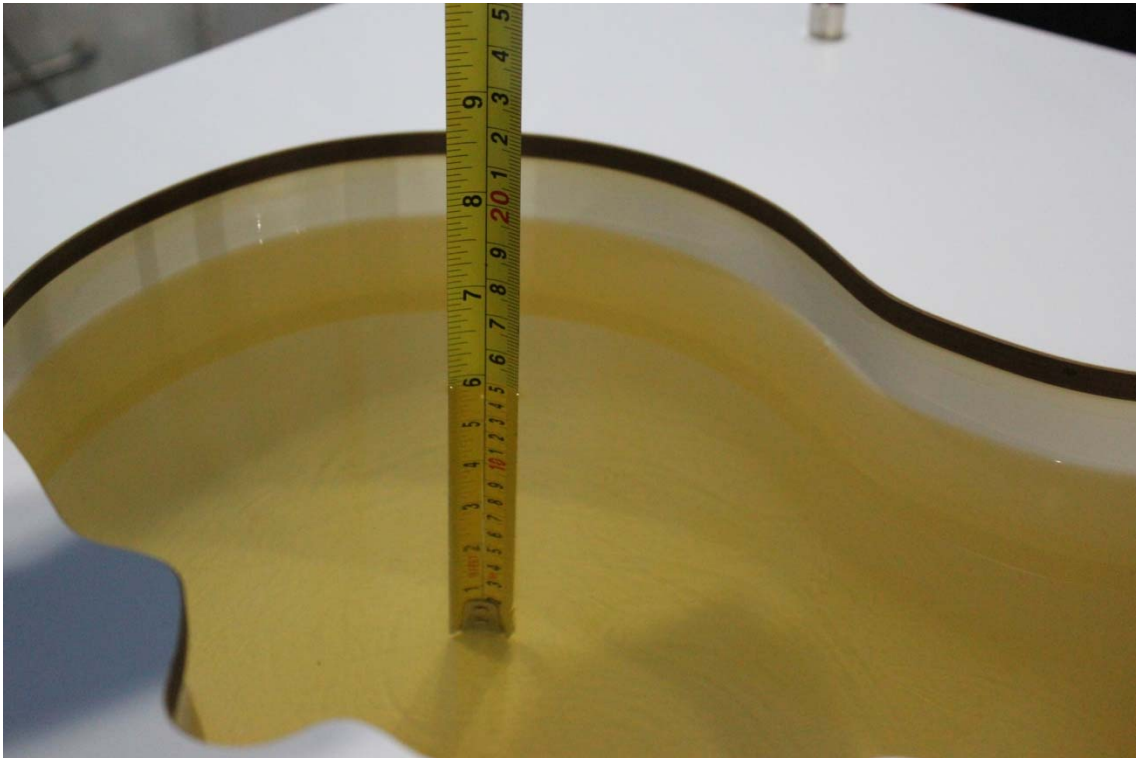
Frequency(MHz)	Liquid Type	Conductivity(σ)	$\pm 5\%$ Range	Permittivity(ϵ)	$\pm 5\%$ Range
835	Head	0.90	0.86~0.95	41.5	39.4~43.6
835	Body	0.97	0.92~1.02	55.2	52.4~58.0
1900	Head	1.40	1.33~1.47	40.0	38.0~42.0
1900	Body	1.52	1.44~1.60	53.3	50.6~56.0
2450	Head	1.80	1.71~1.89	39.2	37.2~41.2
2450	Body	1.95	1.85~2.05	52.7	50.1~55.3
2600	Head	1.96	1.86~2.06	39.01	37.06~40.96
2600	Body	2.16	2.05~2.27	52.5	49.9~55.1
5250	Head	4.71	4.47~4.95	35.93	34.1~37.7
5250	Body	5.36	5.09~5.63	48.9	46.5~51.3
5600	Head	5.07	4.82~5.32	35.53	33.8~37.3
5600	Body	5.77	5.48~6.06	48.5	46.1~50.9
5750	Head	5.22	4.96~5.48	35.36	33.6~37.1
5750	Body	5.94	5.64~6.24	48.3	45.9~50.7

7.2 Dielectric Performance

Table 7.2: Dielectric Performance of Tissue Simulating Liquid

Measurement Date yyyy/mm/dd	Frequency	Type	Permittivity ϵ	Drift (%)	Conductivity σ (S/m)	Drift (%)
2017/12/25	750 MHz	Head	42.73	1.88	0.879	-1.24
		Body	56.1	1.08	0.96	0.00
2017/12/26	835 MHz	Head	42.3	1.93	0.892	-0.89
		Body	54.72	-0.87	0.954	-1.65
2017/12/27	1750 MHz	Head	40.25	0.42	1.388	1.31
		Body	52.74	-1.24	1.493	0.20
2017/12/28	1900 MHz	Head	39.8	-0.50	1.398	-0.14
		Body	52.53	-1.44	1.492	-1.84
2017/12/29	2450 MHz	Head	39.15	-0.13	1.823	1.28
		Body	53.48	1.48	1.927	-1.18
2017/12/30	2600 MHz	Head	38.56	-1.15	1.95	-0.51
		Body	51.9	-1.14	2.145	-0.69

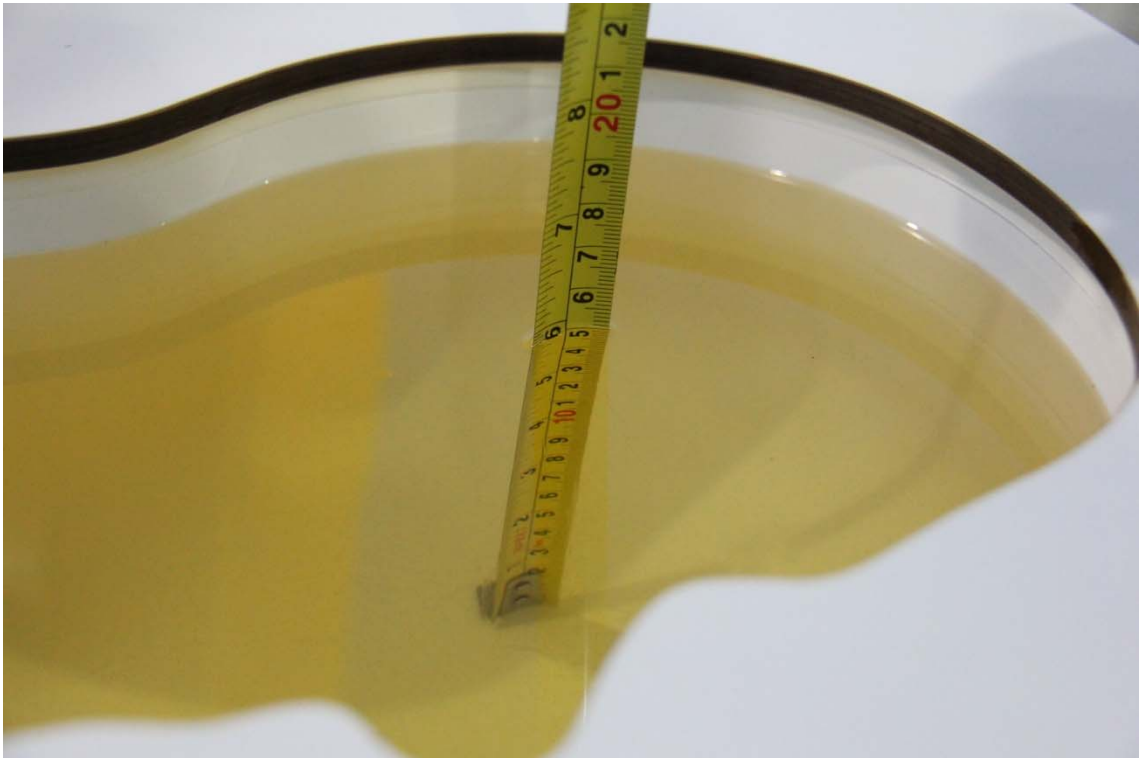
Note: The liquid temperature is 22.3°C



Picture 7-1 Liquid depth in the Head Phantom (750 MHz)



Picture 7-2 Liquid depth in the Flat Phantom (750 MHz)



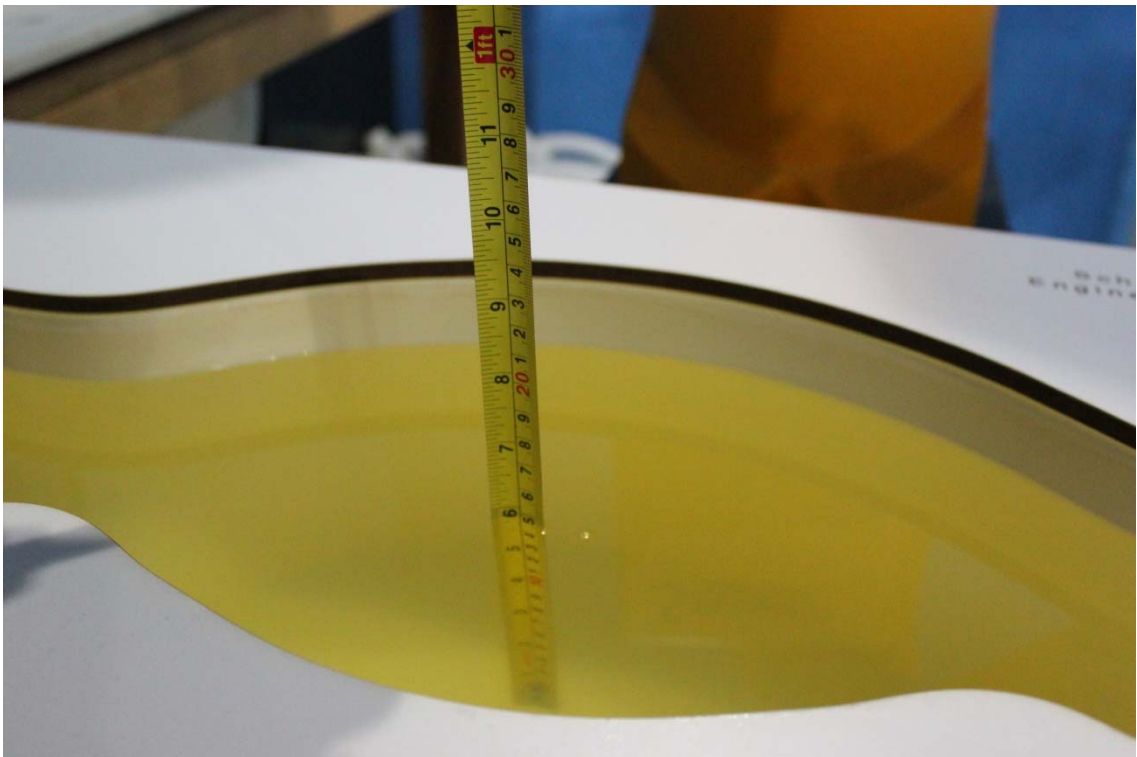
Picture 7-3 Liquid depth in the Head Phantom (835MHz)



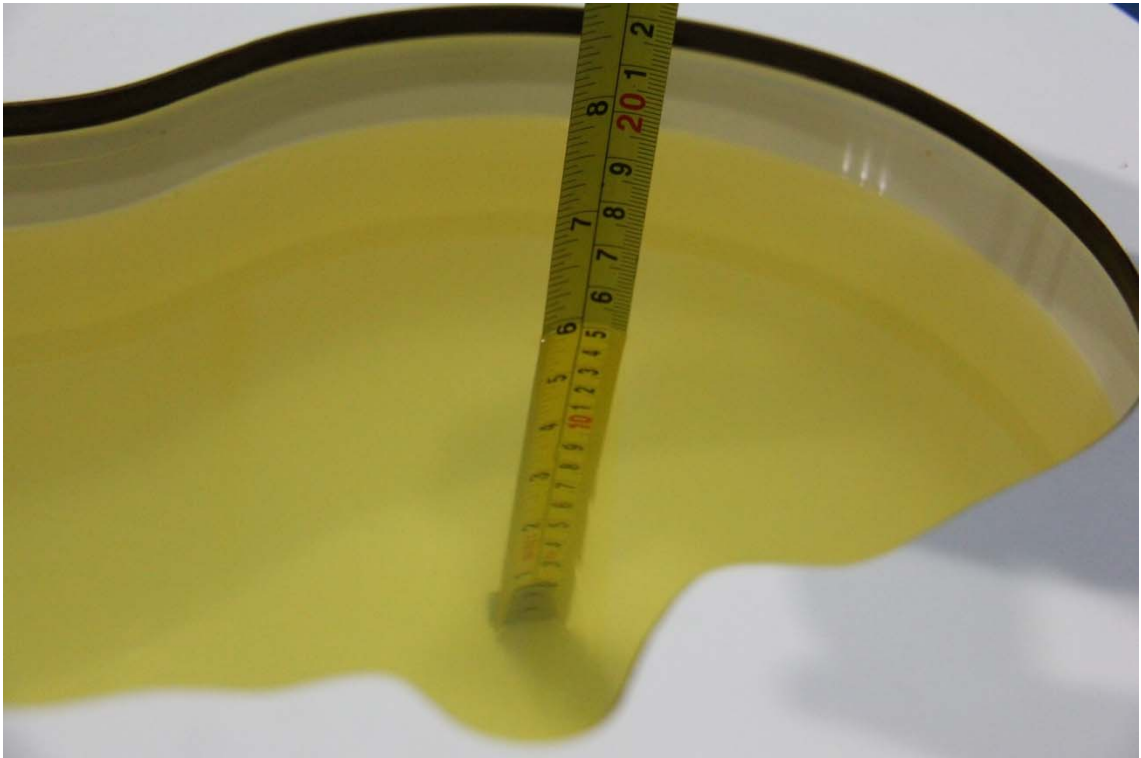
Picture 7-4 Liquid depth in the Flat Phantom (835MHz)



Picture 7-5 Liquid depth in the Head Phantom (1750 MHz)



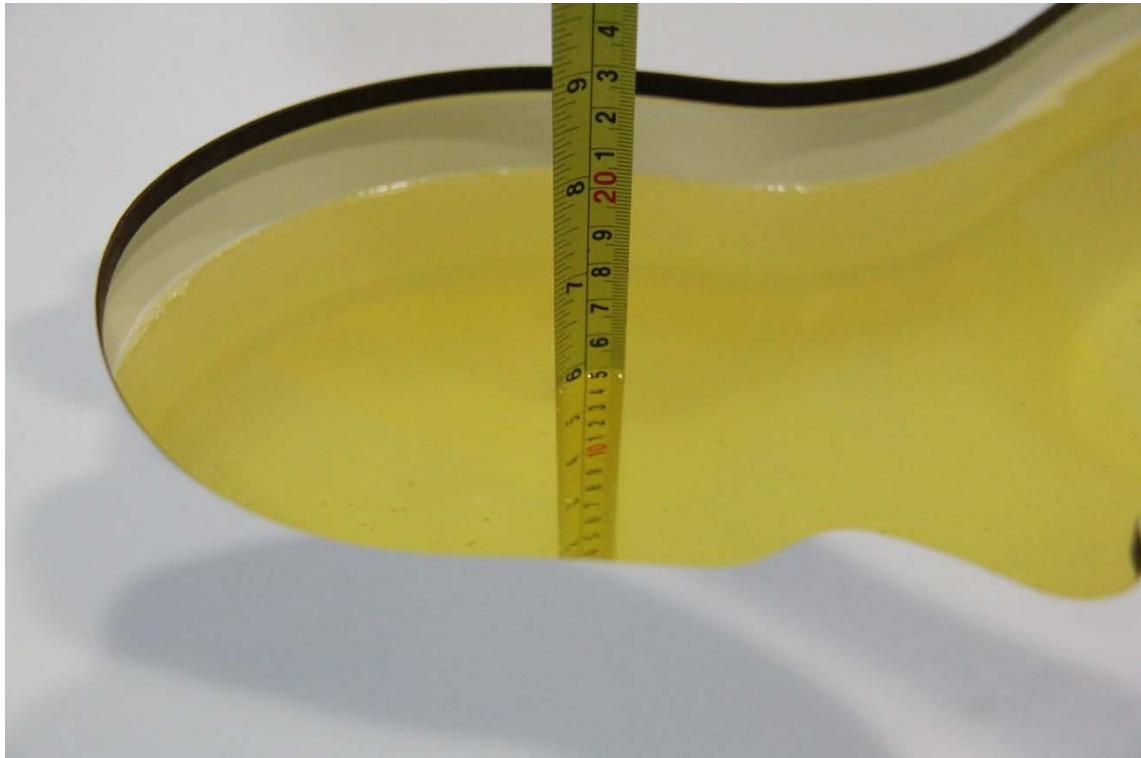
Picture 7-6 Liquid depth in the Flat Phantom (1750MHz)



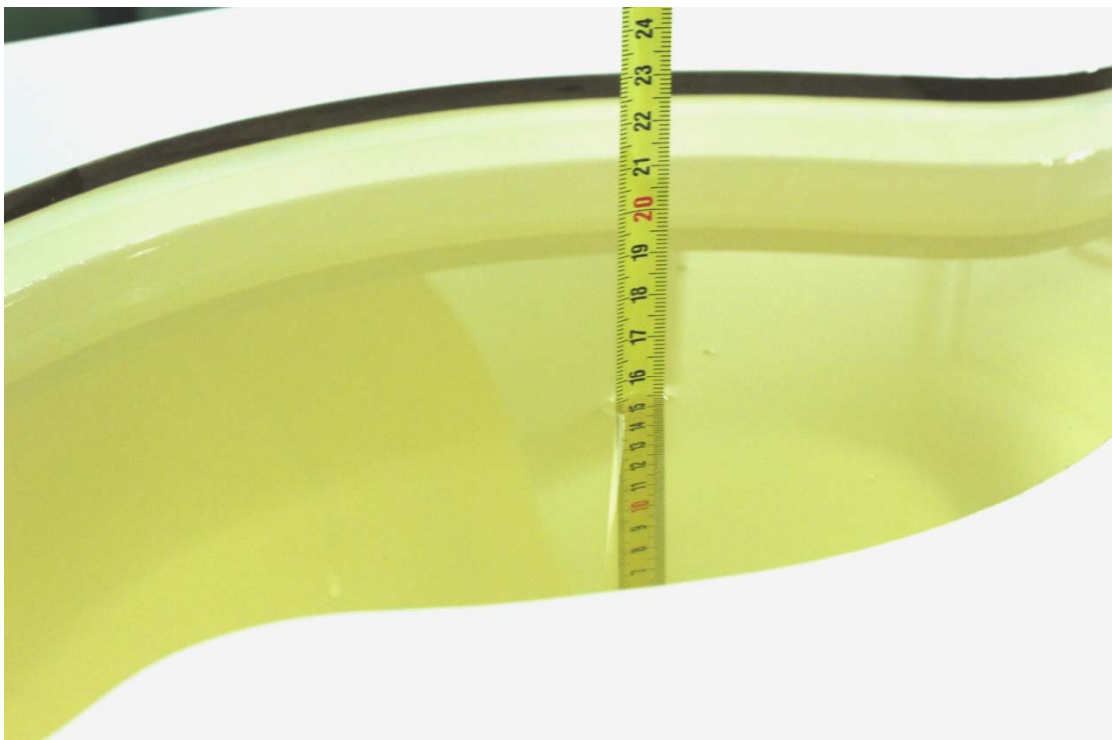
Picture 7-7 Liquid depth in the Head Phantom (1900 MHz)



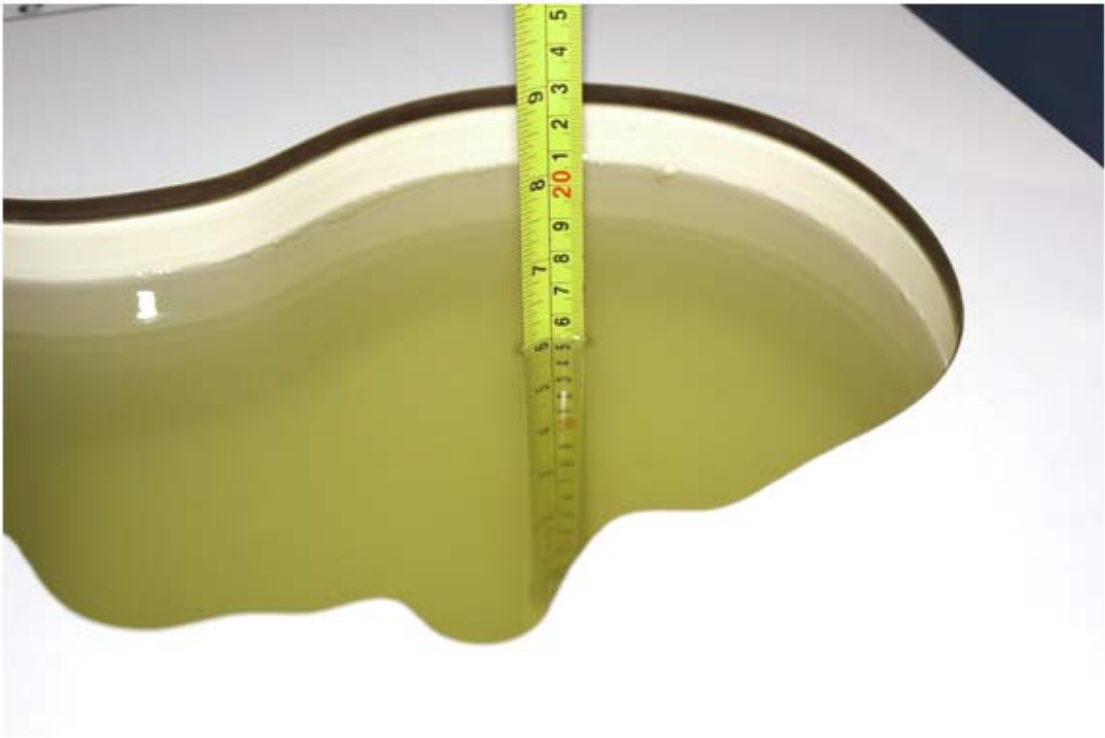
Picture 7-8 Liquid depth in the Flat Phantom (1900MHz)



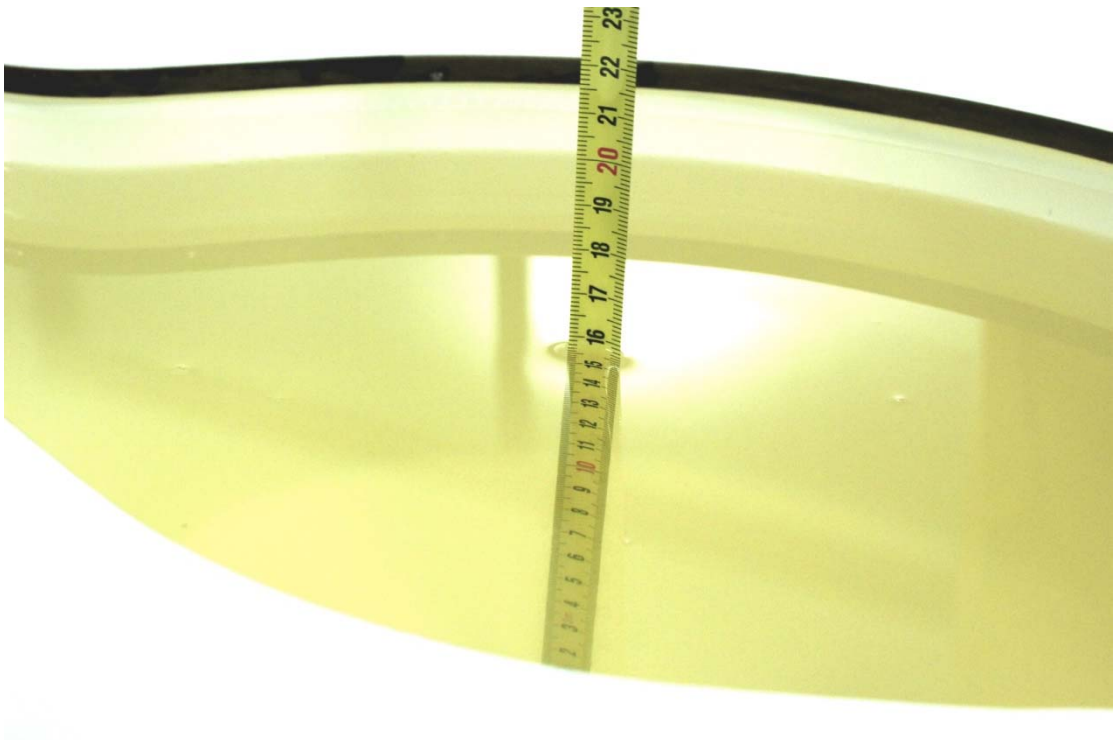
Picture 7-9 Liquid depth in the Head Phantom (2450MHz)



Picture 7-10 Liquid depth in the Flat Phantom (2450MHz)



Picture 7-11 Liquid depth in the Head Phantom (2600 MHz Head)

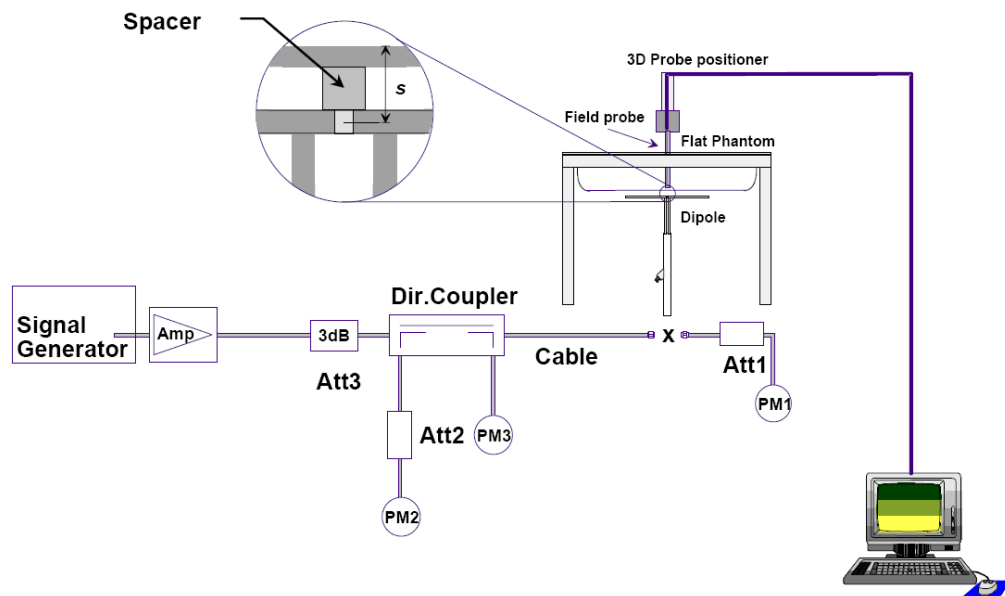


Picture 7-12 Liquid depth in the Flat Phantom (2600MHz)

8 System verification

8.1 System Setup

In the simplified setup for system evaluation, the DUT is replaced by a calibrated dipole and the power source is replaced by a continuous wave that comes from a signal generator. The calibrated dipole must be placed beneath the flat phantom section of the SAM twin phantom with the correct distance holder. The distance holder should touch the phantom surface with a light pressure at the reference marking and be oriented parallel to the long side of the phantom. The equipment setup is shown below:



Picture 8.1 System Setup for System Evaluation



Picture 8.2 Photo of Dipole Setup

8.2 System Verification

SAR system verification is required to confirm measurement accuracy, according to the tissue dielectric media, probe calibration points and other system operating parameters required for measuring the SAR of a test device. The system verification must be performed for each frequency band and within the valid range of each probe calibration point required for testing the device.

The system verification results are required that the area scan estimated 1-g SAR is within 3% of the zoom scan 1-g SAR. The details are presented in annex B.

Table 8.1: System Verification of Head

Measurement Date (yyyy-mm-dd)	Frequency	Target value (W/kg)		Measured value (W/kg)		Deviation	
		10 g Average	1 g Average	10 g Average	1 g Average	10 g Average	1 g Average
2017/12/25	750 MHz	5.42	8.32	5.4	8.4	-0.37%	0.96%
2017/12/26	835 MHz	6.06	9.37	6	9.4	-0.99%	0.32%
2017/12/27	1750 MHz	19.4	36.7	19.24	36.72	-0.82%	0.05%
2017/12/28	1900 MHz	21.0	40.0	20.6	40.32	-1.90%	0.80%
2017/12/29	2450 MHz	24.7	52.2	24.28	52.64	-1.70%	0.84%
2017/12/30	2600 MHz	25.8	57.9	25.6	57.68	-0.78%	-0.38%

Table 8.2: System Verification of Body

Measurement Date (yyyy-mm-dd)	Frequency	Target value (W/kg)		Measured value (W/kg)		Deviation	
		10 g Average	1 g Average	10 g Average	1 g Average	10 g Average	1 g Average
2017/12/25	750 MHz	5.68	8.66	5.72	8.6	0.70%	-0.69%
2017/12/26	835 MHz	6.12	9.41	6.04	9.24	-1.31%	-1.81%
2017/12/27	1750 MHz	19.8	37.1	19.72	37.2	-0.40%	0.27%
2017/12/28	1900 MHz	21.5	40.5	21.84	40.04	1.58%	-1.14%
2017/12/29	2450 MHz	23.8	50.4	23.6	49.92	-0.84%	-0.95%
2017/12/30	2600 MHz	24.8	55.5	25.12	55.68	1.29%	0.32%

9 Measurement Procedures

9.1 Tests to be performed

In order to determine the highest value of the peak spatial-average SAR of a handset, all device positions, configurations and operational modes shall be tested for each frequency band according to steps 1 to 3 below. A flowchart of the test process is shown in picture 9.1.

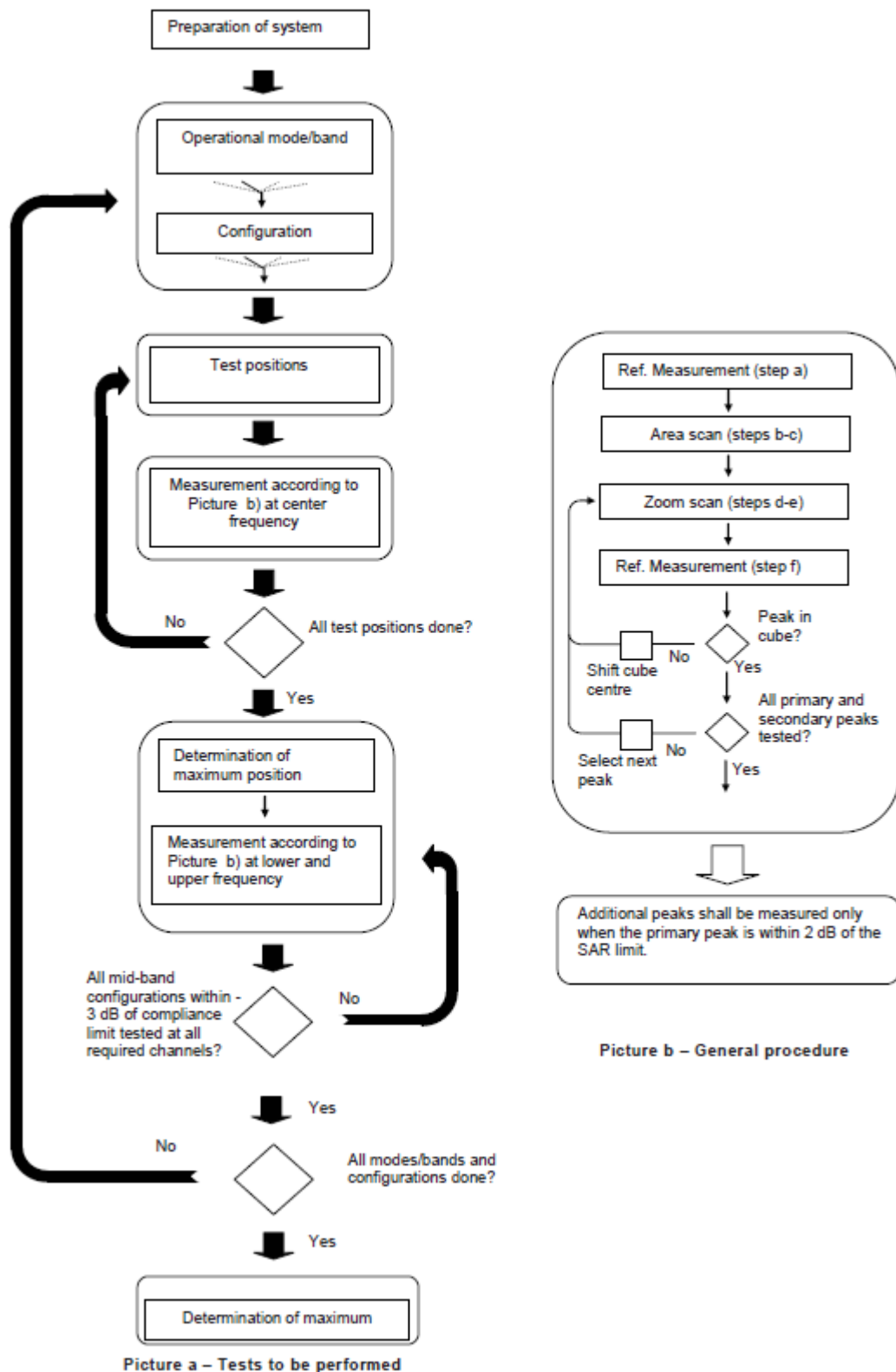
Step 1: The tests described in 9.2 shall be performed at the channel that is closest to the center of the transmit frequency band (f_c) for:

- a) all device positions (cheek and tilt, for both left and right sides of the SAM phantom, as described in annex D),
- b) all configurations for each device position in a), e.g., antenna extended and retracted, and
- c) all operational modes, e.g., analogue and digital, for each device position in a) and configuration in b) in each frequency band.

If more than three frequencies need to be tested according to 11.1 (i.e., $N_c > 3$), then all frequencies, configurations and modes shall be tested for all of the above test conditions.

Step 2: For the condition providing highest peak spatial-average SAR determined in Step 1, perform all tests described in 9.2 at all other test frequencies, i.e., lowest and highest frequencies. In addition, for all other conditions (device position, configuration and operational mode) where the peak spatial-average SAR value determined in Step 1 is within 3 dB of the applicable SAR limit, it is recommended that all other test frequencies shall be tested as well.

Step 3: Examine all data to determine the highest value of the peak spatial-average SAR found in Steps 1 to 2.



Picture 9.1 Block diagram of the tests to be performed

9.2 General Measurement Procedure

The area and zoom scan resolutions specified in the table below must be applied to the SAR measurements and fully documented in SAR reports to qualify for TCB approval. Probe boundary effect error compensation is required for measurements with the probe tip closer than half a probe tip diameter to the phantom surface. Both the probe tip diameter and sensor offset distance must satisfy measurement protocols; to ensure probe boundary effect errors are minimized and the higher fields closest to the phantom surface can be correctly measured and extrapolated to the phantom surface for computing 1-g SAR. Tolerances of the post-processing algorithms must be verified by the test laboratory for the scan resolutions used in the SAR measurements, according to the reference distribution functions specified in IEEE Std 1528-2013. The results should be documented as part of the system validation records and may be requested to support test results when all the measurement parameters in the following table are not satisfied.

		≤ 3 GHz	> 3 GHz
Maximum distance from closest measurement point (geometric center of probe sensors) to phantom surface		5 ± 1 mm	$\frac{1}{2} \cdot \delta \cdot \ln(2) \pm 0.5$ mm
Maximum probe angle from probe axis to phantom surface normal at the measurement location		$30^\circ \pm 1^\circ$	$20^\circ \pm 1^\circ$
Maximum area scan spatial resolution: Δx_{Area} , Δy_{Area}		≤ 2 GHz: ≤ 15 mm 2 – 3 GHz: ≤ 12 mm	3 – 4 GHz: ≤ 12 mm 4 – 6 GHz: ≤ 10 mm
		When the x or y dimension of the test device, in the measurement plane orientation, is smaller than the above, the measurement resolution must be \leq the corresponding x or y dimension of the test device with at least one measurement point on the test device.	
Maximum zoom scan spatial resolution: Δx_{Zoom} , Δy_{Zoom}		≤ 2 GHz: ≤ 8 mm 2 – 3 GHz: ≤ 5 mm*	3 – 4 GHz: ≤ 5 mm* 4 – 6 GHz: ≤ 4 mm*
Maximum zoom scan spatial resolution, normal to phantom surface	uniform grid: $\Delta z_{Zoom}(n)$	≤ 5 mm	3 – 4 GHz: ≤ 4 mm 4 – 5 GHz: ≤ 3 mm 5 – 6 GHz: ≤ 2 mm
	graded grid $\Delta z_{Zoom}(1)$: between 1 st two points closest to phantom surface	≤ 4 mm	3 – 4 GHz: ≤ 3 mm 4 – 5 GHz: ≤ 2.5 mm 5 – 6 GHz: ≤ 2 mm
	$\Delta z_{Zoom}(n>1)$: between subsequent points	$\leq 1.5 \cdot \Delta z_{Zoom}(n-1)$	
Minimum zoom scan volume	x, y, z	≥ 30 mm	3 – 4 GHz: ≥ 28 mm 4 – 5 GHz: ≥ 25 mm 5 – 6 GHz: ≥ 22 mm
Note: δ is the penetration depth of a plane-wave at normal incidence to the tissue medium; see draft standard IEEE P1528-2011 for details.			
* When zoom scan is required and the <i>reported</i> SAR from the area scan based 1-g SAR estimation procedures of KDB 447498 is ≤ 1.4 W/kg, ≤ 8 mm, ≤ 7 mm and ≤ 5 mm zoom scan resolution may be applied, respectively, for 2 GHz to 3 GHz, 3 GHz to 4 GHz and 4 GHz to 6 GHz.			

9.3 WCDMA Measurement Procedures for SAR

The following procedures are applicable to WCDMA handsets operating under 3GPP Release99, Release 5 and Release 6. The default test configuration is to measure SAR with an established radio link between the DUT and a communication test set using a 12.2kbps RMC (reference measurement channel) configured in Test Loop Mode 1. SAR is selectively confirmed for other physical channel configurations (DPCCH & DPDCH_n), HSDPA and HSPA (HSUPA/HSDPA) modes according to output power, exposure conditions and device operating capabilities. Both uplink and downlink should be configured with the same RMC or AMR, when required. SAR for Release 5 HSDPA and Release 6 HSPA are measured using the applicable FRC (fixed reference channel) and E-DCH reference channel configurations. Maximum output power is verified according to applicable versions of 3GPP TS 34.121 and SAR must be measured according to these maximum output conditions. When Maximum Power Reduction (MPR) is not implemented according to Cubic Metric (CM) requirements for Release 6 HSPA, the following procedures do not apply.

For Release 5 HSDPA Data Devices:

Sub-test	β_c	β_d	β_d (SF)	β_c / β_d	β_{hs}	CM/dB
1	2/15	15/15	64	2/15	4/15	0.0
2	12/15	15/15	64	12/15	24/25	1.0
3	15/15	8/15	64	15/8	30/15	1.5
4	15/15	4/15	64	15/4	30/15	1.5

For Release 6 HSPA Data Devices

Sub-test	β_c	β_d	β_d (SF)	β_c / β_d	β_{hs}	β_{ec}	β_{ed}	β_{ed} (SF)	β_{ed} (codes)	CM (dB)	MPR (dB)	AG Index	E-TFCI
1	11/15	15/15	64	11/15	22/15	209/225	1039/225	4	1	1.5	1.5	20	75
2	6/15	15/15	64	6/15	12/15	12/15	12/15	4	1	1.5	1.5	12	67
3	15/15	9/15	64	15/9	30/15	30/15	$\beta_{ed1}:47/15$ $\beta_{ed2}:47/15$	4	2	1.5	1.5	15	92
4	2/15	15/15	64	2/15	4/15	4/15	56/75	4	1	1.5	1.5	17	71
5	15/15	15/15	64	15/15	24/15	30/15	134/15	4	1	1.5	1.5	21	81

Rel.8 DC-HSDPA (Cat 24)

SAR test exclusion for Rel.8 DC-HSDPA must satisfy the SAR test exclusion requirements of Rel.5 HSDPA. SAR test exclusion for DC-HSDPA devices is determined by power measurements according to the H-Set 12, Fixed Reference Channel (FRC) configuration in Table C.8.1.12 of 3GPP TS 34.121-1. A primary and a secondary serving HS-DSCH Cell are required to perform the power measurement and for the results to qualify for SAR test exclusion.

9.4 SAR Measurement for LTE

SAR tests for LTE are performed with a base station simulator, Rohde & Schwarz CMW500. Closed loop power control was used so the UE transmits with maximum output power during SAR testing. All powers were measured with the CMW 500.

It is performed for conducted power and SAR based on the KDB941225 D05.

SAR is evaluated separately according to the following procedures for the different test positions in each exposure condition – head, body, body-worn accessories and other use conditions. The procedures in the following subsections are applied separately to test each LTE frequency band.

1) QPSK with 1 RB allocation

Start with the largest channel bandwidth and measure SAR for QPSK with 1 RB allocation, using the RB offset and required test channel combination with the highest maximum output power among RB offsets at the upper edge, middle and lower edge of each required test channel. When the reported SAR is ≤ 0.8 W/kg, testing of the remaining RB offset configurations and required test channels is not required for 1 RB allocation; otherwise, SAR is required for the remaining required test channels and only for the RB offset configuration with the highest output power for that channel. When the reported SAR of a required test channel is > 1.45 W/kg, SAR is required for all three RB offset configurations for that required test channel.

2) QPSK with 50% RB allocation

The procedures required for 1 RB allocation in 1) are applied to measure the SAR for QPSK with 50% RB allocation.

3) QPSK with 100% RB allocation

For QPSK with 100% RB allocation, SAR is not required when the highest maximum output power for 100 % RB allocation is less than the highest maximum output power in 50% and 1 RB allocations and the highest reported SAR for 1 RB and 50% RB allocation in 1) and 2) are ≤ 0.8 W/kg. Otherwise, SAR is measured for the highest output power channel; and if the reported SAR is > 1.45 W/kg, the remaining required test channels must also be tested.

9.5 Bluetooth & Wi-Fi Measurement Procedures for SAR

Normal network operating configurations are not suitable for measuring the SAR of 802.11 transmitters in general. Unpredictable fluctuations in network traffic and antenna diversity conditions can introduce undesirable variations in SAR results. The SAR for these devices should be measured using chipset based test mode software to ensure that the results are consistent and reliable.

Chipset based test mode software is hardware dependent and generally varies among manufacturers. The device operating parameters established in a test mode for SAR measurements must be identical to those programmed in production units, including output power levels, amplifier gain settings and other RF performance tuning parameters. The test frequencies should correspond to actual channel frequencies defined for domestic use. SAR for devices with switched diversity should be measured with only one antenna transmitting at a time during each SAR measurement, according to a fixed modulation and data rate. The same data pattern should be used for all measurements.

9.6 Power Drift

To control the output power stability during the SAR test, DASY4 system calculates the power drift by measuring the E-field at the same location at the beginning and at the end of the measurement for each test position. These drift values can be found in section 14 labeled as: (Power Drift [dB]). This ensures that the power drift during one measurement is within 5%.

10 Area Scan Based 1-g SAR

10.1 Requirement of KDB

According to the KDB447498 D01 v05, when the implementation is based the specific polynomial fit algorithm as presented at the 29th Bioelectromagnetics Society meeting (2007) and the estimated 1-g SAR is ≤ 1.2 W/kg, a zoom scan measurement is not required provided it is also not needed for any other purpose; for example, if the peak SAR location required for simultaneous transmission SAR test exclusion can be determined accurately by the SAR system or manually to discriminate between distinctive peaks and scattered noisy SAR distributions from area scans.

There must not be any warning or alert messages due to various measurement concerns identified by the SAR system; for example, noise in measurements, peaks too close to scan boundary, peaks are too sharp, spatial resolution and uncertainty issues etc. The SAR system verification must also demonstrate that the area scan estimated 1-g SAR is within 3% of the zoom scan 1-g SAR (See Annex B). When all the SAR results for each exposure condition in a frequency band and wireless mode are based on estimated 1-g SAR, the 1-g SAR for the highest SAR configuration must be determined by a zoom scan.

10.2 Fast SAR Algorithms

The approach is based on the area scan measurement applying a frequency dependent attenuation parameter. This attenuation parameter was empirically determined by analyzing a large number of phones. The MOTOROLA FAST SAR was developed and validated by the MOTOROLA Research Group in Ft. Lauderdale.

In the initial study, an approximation algorithm based on Linear fit was developed. The accuracy of the algorithm has been demonstrated across a broad frequency range (136-2450 MHz) and for both 1- and 10-g averaged SAR using a sample of 264 SAR measurements from 55 wireless handsets. For the sample size studied, the root-mean-squared errors of the algorithm are 1.2% and 5.8% for 1- and 10-g averaged SAR, respectively. The paper describing the algorithm in detail is expected to be published in August 2004 within the Special Issue of Transactions on MTT.

In the second step, the same research group optimized the fitting algorithm to an Polynomial fit whereby the frequency validity was extended to cover the range 30-6000MHz. Details of this study can be found in the BEMS 2007 Proceedings.

Both algorithms are implemented in DASY software.

11 Conducted Output Power

11.1 GSM Measurement result

During the process of testing, the EUT was controlled via Agilent Digital Radio Communication tester (E5515C) to ensure the maximum power transmission and proper modulation. This result contains conducted output power for the EUT. In all cases, the measured peak output power should be greater and within 5% than EMI measurement.

Table 11-1 GSM850 #1

GSM850 #1								
Config	Tune-up	Measured Power (dBm)			Calculation	Frame Burst Power (dBm)		
		CH251 848.8 MHz	CH190 836.6 MHz	CH128 824.2 MHz		CH251 848.8 MHz	CH190 836.6 MHz	CH128 824.2 MHz
GSM Speech	33.50	32.63	32.61	32.52				
GPRS 1 Txslot	33.50	32.59	32.54	32.44	-9.03	23.56	23.51	23.41
GPRS 2 Txslots	32.00	31.89	31.82	31.73	-6.02	25.87	25.80	25.71
GPRS 3 Txslots	30.50	30.14	30.05	29.95	-4.26	25.88	25.79	25.69
GPRS 4 Txslots	29.00	28.97	28.97	28.86	-3.01	25.96	25.96	25.85
EGPRS GMSK 1 Txslot	33.50	32.52	32.48	32.93	-9.03	23.49	23.45	23.90
EGPRS GMSK 2 Txslots	32.00	31.83	31.79	31.85	-6.02	25.81	25.77	25.83
EGPRS GMSK 3 Txslots	30.50	30.09	30.02	30.08	-4.26	25.83	25.76	25.82
EGPRS GMSK 4 Txslots	29.00	28.92	28.94	28.96	-3.01	25.91	25.93	25.95
EGPRS 8PSK 1 Txslot	28.00	27.23	27.08	27.09	-9.03	18.20	18.05	18.06
EGPRS 8PSK 2 Txslots	26.50	26.20	26.22	26.10	-6.02	20.18	20.20	20.08
EGPRS 8PSK 3 Txslots	25.00	24.38	24.35	24.29	-4.26	20.12	20.09	20.03
EGPRS 8PSK 4 Txslots	23.50	23.25	23.22	23.24	-3.01	20.24	20.21	20.23

Table 11-2 PCS1900 #1

PCS1900 #1								
Config	Tune-up	Measured Power (dBm)			Calculation	Frame Burst Power (dBm)		
		CH810 1909.8 MHz	CH661 1880 MHz	CH512 1850.2 MHz		CH810 1909.8 MHz	CH661 1880 MHz	CH512 1850.2 MHz
GSM Speech	30.50	29.43	29.41	29.34				
GPRS 1 Txslot	31.00	29.43	29.40	29.33	-9.03	20.40	20.37	20.30
GPRS 2 Txslots	29.50	28.72	28.69	28.62	-6.02	22.70	22.67	22.60
GPRS 3 Txslots	28.00	27.00	26.95	26.88	-4.26	22.74	22.69	22.62
GPRS 4 Txslots	26.50	25.88	25.85	25.77	-3.01	22.87	22.84	22.76
EGPRS GMSK 1 Txslot	31.00	29.34	29.38	29.32	-9.03	20.31	20.35	20.29
EGPRS GMSK 2 Txslots	29.50	28.63	28.67	28.60	-6.02	22.61	22.65	22.58
EGPRS GMSK 3 Txslots	28.00	26.91	26.93	26.86	-4.26	22.65	22.67	22.60
EGPRS GMSK 4 Txslots	26.50	25.79	25.84	25.76	-3.01	22.78	22.83	22.75
EGPRS 8PSK 1 Txslot	27.00	26.36	26.55	26.82	-9.03	17.33	17.52	17.79
EGPRS 8PSK 2 Txslots	26.00	25.39	25.56	25.89	-6.02	19.37	19.54	19.87
EGPRS 8PSK 3 Txslots	24.00	23.34	23.53	23.55	-4.26	19.08	19.27	19.29
EGPRS 8PSK 4 Txslots	23.00	22.31	22.50	22.82	-3.01	19.30	19.49	19.81

NOTES:

Division Factors

To average the power, the division factor is as follows:

1TX-slot = 1 transmit time slot out of 8 time slots=> conducted power divided by (8/1) => -9.03dB

2TX-slots = 2 transmit time slots out of 8 time slots=> conducted power divided by (8/2) => -6.02dB

3TX-slots = 3 transmit time slots out of 8 time slots=> conducted power divided by (8/3) => -4.26dB

4TX-slots = 4 transmit time slots out of 8 time slots=> conducted power divided by (8/4) => -3.01dB

According to the conducted power as above, the body measurements are performed with 4Txslots for 850MHz and 1900MHz.

11.2 WCDMA Measurement result

WCDMA1900-BII #1					
			Measured Power (dBm)		
Item		Tune-up	CH9538 1907.6 MHz	CH9400 1880 MHz	CH9262 1852.4 MHz
WCDMA	RMC	24.00	23.45	23.60	23.67
HSUPA	subtest1	21.00	20.14	20.32	20.50
	subtest2	21.00	20.12	20.31	20.50
	subtest3	22.00	21.15	21.35	21.50
	subtest4	20.00	19.74	19.89	19.99
	subtest5	21.50	20.99	21.22	21.43
HSPA+	\	22.00	21.71	21.74	21.77
DC-HSDPA	subtest1	23.00	22.26	22.28	22.36
	subtest2	23.00	22.28	22.29	22.30
	subtest3	23.00	22.27	22.31	22.28
	subtest4	23.00	22.24	22.26	22.32

WCDMA1700-BIV #1					
			Measured Power (dBm)		
Item		Tune-up	CH1513 1752.6 MHz	CH1412 1732.4 MHz	CH1312 1712.4 MHz
WCDMA	RMC	24.00	23.72	23.69	23.61
HSUPA	subtest1	21.00	20.78	20.69	20.61
	subtest2	21.00	20.78	20.68	20.61
	subtest3	22.00	21.79	21.67	21.67
	subtest4	20.50	20.29	20.22	20.16
	subtest5	22.00	21.70	21.63	21.56
HSPA+	\	22.00	21.99	21.94	21.93
DC-HSDPA	subtest1	23.00	22.49	22.45	22.47
	subtest2	23.00	22.51	22.44	22.46
	subtest3	23.00	22.48	22.45	22.47
	subtest4	23.00	22.52	22.49	22.47

WCDMA850-BV #1					
			Measured Power (dBm)		
Item		Tune-up	CH4233 846.6 MHz	CH4182 835.4 MHz	CH4132 826.4 MHz
WCDMA	RMC	24.00	23.78	23.76	23.85
HSUPA	subtest1	21.00	20.67	20.76	20.76
	subtest2	21.00	20.64	20.71	20.75
	subtest3	22.00	21.65	21.78	21.77
	subtest4	20.50	20.14	20.28	20.26
	subtest5	22.00	21.58	21.68	21.74
HSPA+	\	22.00	21.70	21.75	21.68
DC-HSDPA	subtest1	23.00	22.23	22.24	22.19
	subtest2	23.00	22.25	22.27	22.22
	subtest3	23.00	22.24	22.26	22.23
	subtest4	23.00	22.23	22.28	22.21

11.3 LTE Measurement result

Table 11-3 LTE1900-FDD2 #1

LTE1900-FDD2 #1								
SN				Measured Power (dBm) & MPR				
BandWidth	RB No./Start	Channel	Tune-up	QPSK		16QAM		
				Measured Power	MPR	Measured Power	MPR	
1.4MHz	1H	19193	24.5	23.73	0	22.49	1	
		18900	24.5	24.44	0	22.68	1	
		18607	24.5	24.03	0	23.11	1	
	1M	19193	24.5	23.97	0	22.68	1	
		18900	24.5	23.87	0	22.82	1	
		18607	24.5	23.96	0	23.25	1	
	1L	19193	24.5	23.76	0	22.51	1	
		18900	24.5	23.72	0	22.65	1	
		18607	24.5	23.82	0	23.08	1	
	3H	19193	24.5	23.62	0	22.72	1	
		18900	24.5	23.72	0	22.68	1	
		18607	24.5	23.87	0	23.03	1	
	3M	19193	24.5	23.66	0	22.74	1	
		18900	24.5	23.78	0	22.69	1	
		18607	24.5	23.93	0	23.05	1	
	3L	19193	24.5	23.65	0	22.69	1	
		18900	24.5	23.73	0	22.68	1	
		18607	24.5	23.93	0	22.99	1	
	6	19193	24.5	22.67	1	21.70	2	
		18900	24.5	22.70	1	21.72	2	
		18607	24.5	22.84	1	21.93	2	
	3MHz	1H	19185	24.5	23.94	0	22.53	1
			18900	24.5	23.88	0	22.56	1
			18615	24.5	23.97	0	23.21	1
1M		19185	24.5	23.88	0	22.68	1	
		18900	24.5	23.86	0	22.66	1	
		18615	24.5	23.93	0	23.35	1	
1L		19185	24.5	23.63	0	22.60	1	
		18900	24.5	23.86	0	22.58	1	
		18615	24.5	23.96	0	23.19	1	
8H		19185	24.5	22.78	1	21.74	2	
		18900	24.5	22.85	1	21.90	2	
		18615	24.5	22.93	1	21.99	2	
8M		19185	24.5	22.80	1	21.80	2	
		18900	24.5	22.82	1	21.91	2	
		18615	24.5	22.87	1	22.07	2	
8L		19185	24.5	22.79	1	21.78	2	
		18900	24.5	22.84	1	21.92	2	
		18615	24.5	22.88	1	22.04	2	
15		19185	24.5	22.69	1	21.69	2	
		18900	24.5	22.74	1	21.81	2	
		18615	24.5	22.87	1	21.98	2	
5MHz		1H	19175	24.5	23.70	0	22.62	1
			18900	24.5	23.68	0	22.75	1
			18625	24.5	23.85	0	23.27	1
	1M	19175	24.5	23.93	0	22.84	1	
		18900	24.5	23.90	0	22.96	1	
		18625	24.5	24.08	0	23.49	1	
	1L	19175	24.5	23.75	0	22.64	1	
		18900	24.5	23.69	0	22.73	1	
		18625	24.5	23.87	0	23.27	1	
	12H	19175	24.5	22.62	1	21.70	2	
		18900	24.5	22.67	1	21.82	2	
		18625	24.5	22.85	1	22.09	2	
	12M	19175	24.5	22.76	1	21.81	2	
		18900	24.5	22.73	1	21.84	2	
		18625	24.5	22.90	1	22.11	2	
	12L	19175	24.5	22.70	1	21.76	2	
		18900	24.5	22.73	1	21.84	2	
		18625	24.5	22.87	1	22.08	2	
	25	19175	24.5	22.61	1	21.64	2	
		18900	24.5	22.69	1	21.78	2	
		18625	24.5	22.85	1	21.98	2	

10MHz	1H	19150	24.5	23.86	0	22.87	1	
		18900	24.5	23.82	0	22.63	1	
		18650	24.5	24.00	0	22.67	1	
	1M	19150	24.5	24.00	0	23.04	1	
		18900	24.5	24.01	0	22.70	1	
		18650	24.5	24.12	0	22.85	1	
	1L	19150	24.5	23.83	0	22.86	1	
		18900	24.5	23.89	0	22.63	1	
		18650	24.5	23.96	0	22.75	1	
	25H	19150	24.5	22.67	1	21.68	2	
		18900	24.5	22.69	1	21.85	2	
		18650	24.5	22.94	1	22.05	2	
	25M	19150	24.5	22.69	1	21.73	2	
		18900	24.5	22.78	1	21.94	2	
		18650	24.5	22.89	1	22.02	2	
	25L	19150	24.5	22.75	1	21.75	2	
		18900	24.5	22.81	1	21.92	2	
		18650	24.5	22.95	1	22.06	2	
	50	19150	24.5	22.63	1	21.65	2	
		18900	24.5	22.75	1	21.84	2	
		18650	24.5	22.95	1	22.01	2	
	15MHz	1H	19125	24.5	23.68	0	22.36	1
			18900	24.5	23.65	0	22.85	1
			18675	24.5	23.80	0	22.87	1
		1M	19125	24.5	23.84	0	22.43	1
			18900	24.5	23.86	0	23.01	1
			18675	24.5	23.98	0	23.21	1
1L		19125	24.5	23.74	0	22.42	1	
		18900	24.5	23.90	0	22.91	1	
		18675	24.5	23.85	0	23.12	1	
36H		19125	24.5	22.86	1	21.82	2	
		18900	24.5	22.82	1	21.88	2	
		18675	24.5	23.05	1	22.05	2	
36M		19125	24.5	22.88	1	21.83	2	
		18900	24.5	22.91	1	21.97	2	
		18675	24.5	23.03	1	22.02	2	
36L		19125	24.5	22.88	1	21.82	2	
		18900	24.5	22.96	1	21.98	2	
		18675	24.5	22.99	1	21.99	2	
75		19125	24.5	22.86	1	21.76	2	
		18900	24.5	22.88	1	21.87	2	
		18675	24.5	23.06	1	22.05	2	
20MHz		1H	19100	24.5	23.41	0	22.67	1
			18900	24.5	23.40	0	22.72	1
			18700	24.5	23.54	0	22.87	1
		1M	19100	24.5	23.93	0	23.06	1
			18900	24.5	23.93	0	23.14	1
			18700	24.5	24.03	0	23.49	1
	1L	19100	24.5	23.48	0	22.85	1	
		18900	24.5	23.63	0	22.73	1	
		18700	24.5	23.63	0	23.13	1	
	50H	19100	24.5	22.56	1	21.56	2	
		18900	24.5	22.61	1	21.62	2	
		18700	24.5	22.79	1	21.83	2	
	50M	19100	24.5	22.62	1	21.66	2	
		18900	24.5	22.73	1	21.76	2	
		18700	24.5	22.85	1	21.92	2	
	50L	19100	24.5	22.67	1	21.72	2	
		18900	24.5	22.78	1	21.78	2	
		18700	24.5	22.85	1	21.93	2	
	100	19100	24.5	22.62	1	21.63	2	
		18900	24.5	22.70	1	21.76	2	
		18700	24.5	22.83	1	21.94	2	

Table 11-4 LTE1700-FDD4 #1

LTE1700-FDD4 #1									
SN	BandWidth	RB No./Start	Channel	Tune-up	Measured Power (dBm) & MPR				
					QPSK		16QAM		
					Measured Power	MPR	Measured Power	MPR	
1.4MHz	1H		20393	24	23.38	0	22.29	1	
			20175	24	23.34	0	22.21	1	
			19957	24	23.38	0	22.60	1	
	1M		20393	24	23.67	0	22.47	1	
			20175	24	23.51	0	22.42	1	
			19957	24	23.61	0	22.84	1	
	1L		20393	24	23.40	0	22.29	1	
			20175	24	23.31	0	22.21	1	
			19957	24	23.44	0	22.68	1	
	3H		20393	24	23.43	0	22.48	1	
			20175	24	23.30	0	22.24	1	
			19957	24	23.46	0	22.62	1	
	3M		20393	24	23.45	0	22.56	1	
			20175	24	23.34	0	22.29	1	
			19957	24	23.52	0	22.64	1	
	3L		20393	24	23.39	0	22.49	1	
			20175	24	23.27	0	22.22	1	
			19957	24	23.48	0	22.61	1	
	6		20393	24	22.39	1	21.48	2	
			20175	24	22.27	1	21.19	2	
			19957	24	22.47	1	21.61	2	
	3MHz	1H		20385	24	23.33	0	22.17	1
				20175	24	23.25	0	21.98	1
				19965	24	23.33	0	22.55	1
		1M		20385	24	23.57	0	22.34	1
				20175	24	23.26	0	22.14	1
				19965	24	23.35	0	22.38	1
1L			20385	24	23.37	0	22.24	1	
			20175	24	23.24	0	22.01	1	
			19965	24	23.40	0	22.65	1	
8H			20385	24	22.39	1	21.43	2	
			20175	24	22.20	1	21.33	2	
			19965	24	22.32	1	21.40	2	
8M			20385	24	22.44	1	21.45	2	
			20175	24	22.25	1	21.36	2	
			19965	24	22.35	1	21.50	2	
8L			20385	24	22.42	1	21.43	2	
			20175	24	22.23	1	21.34	2	
			19965	24	22.33	1	21.48	2	
15			20385	24	22.34	1	21.31	2	
			20175	24	22.16	1	21.23	2	
			19965	24	22.25	1	21.37	2	
5MHz		1H		20375	24	23.34	0	22.26	1
				20175	24	23.23	0	22.19	1
				19975	24	23.16	0	22.58	1
		1M		20375	24	23.61	0	22.49	1
				20175	24	23.28	0	22.04	1
				19975	24	23.29	0	22.89	1
	1L		20375	24	23.34	0	22.22	1	
			20175	24	23.22	0	22.15	1	
			19975	24	23.27	0	22.67	1	
	12H		20375	24	22.34	1	21.40	2	
			20175	24	22.15	1	21.27	2	
			19975	24	22.20	1	21.43	2	
	12M		20375	24	22.40	1	21.50	2	
			20175	24	22.20	1	21.34	2	
			19975	24	22.29	1	21.52	2	
	12L		20375	24	22.33	1	21.40	2	
			20175	24	22.14	1	21.27	2	
			19975	24	22.23	1	21.43	2	
	25		20375	24	22.33	1	21.31	2	
			20175	24	22.12	1	21.21	2	
			19975	24	22.25	1	21.34	2	

10MHz	1H	20350	24	23.34	0	22.18	1
		20175	24	23.23	0	22.01	1
		20000	24	23.23	0	22.45	1
	1M	20350	24	23.40	0	22.23	1
		20175	24	23.34	0	22.07	1
		20000	24	23.40	0	22.59	1
	1L	20350	24	23.28	0	22.17	1
		20175	24	23.18	0	21.96	1
		20000	24	23.31	0	22.57	1
	25H	20350	24	22.31	1	21.42	2
		20175	24	22.19	1	21.25	2
		20000	24	22.24	1	21.33	2
	25M	20350	24	22.31	1	21.46	2
		20175	24	22.17	1	21.24	2
		20000	24	22.26	1	21.35	2
	25L	20350	24	22.34	1	21.44	2
		20175	24	22.15	1	21.21	2
		20000	24	22.29	1	21.39	2
50	20350	24	22.29	1	21.36	2	
	20175	24	22.12	1	21.15	2	
	20000	24	22.24	1	21.32	2	
15MHz	1H	20325	24	23.35	0	22.43	1
		20175	24	23.11	0	21.95	1
		20025	24	23.09	0	22.28	1
	1M	20325	24	23.44	0	22.59	1
		20175	24	23.26	0	22.02	1
		20025	24	23.29	0	22.52	1
	1L	20325	24	23.24	0	22.43	1
		20175	24	23.13	0	21.90	1
		20025	24	23.28	0	22.53	1
	36H	20325	24	22.45	1	21.39	2
		20175	24	22.32	1	21.33	2
		20025	24	22.34	1	21.42	2
	36M	20325	24	22.43	1	21.42	2
		20175	24	22.33	1	21.31	2
		20025	24	22.36	1	21.43	2
	36L	20325	24	22.43	1	21.43	2
		20175	24	22.29	1	21.30	2
		20025	24	22.34	1	21.40	2
75	20325	24	22.48	1	21.46	2	
	20175	24	22.33	1	21.28	2	
	20025	24	22.40	1	21.38	2	
20MHz	1H	20300	24	23.11	0	22.28	1
		20175	24	22.92	0	22.35	1
		20050	24	22.88	0	22.14	1
	1M	20300	24	23.48	0	22.71	1
		20175	24	23.38	0	22.79	1
		20050	24	23.40	0	22.66	1
	1L	20300	24	22.99	0	22.22	1
		20175	24	22.95	0	22.34	1
		20050	24	23.00	0	22.39	1
	50H	20300	24	22.17	1	21.21	2
		20175	24	22.09	1	21.17	2
		20050	24	22.12	1	21.20	2
	50M	20300	24	22.29	1	21.29	2
		20175	24	22.16	1	21.23	2
		20050	24	22.20	1	21.25	2
	50L	20300	24	22.26	1	21.25	2
		20175	24	22.09	1	21.16	2
		20050	24	22.21	1	21.24	2
100	20300	24	22.24	1	21.29	2	
	20175	24	22.06	1	21.15	2	
	20050	24	22.16	1	21.21	2	

Table 11-5 LTE850-FDD5 #1

LTE850-FDD5 #1								
BandWidth	RB No./Start	Channel	Tune-up	Measured Power (dBm) & MPR				
				QPSK		16QAM		
				Measured Power	MPR	Measured Power	MPR	
1.4MHz	1H	20643	23	22.62	0	21.70	1	
		20525	23	22.70	0	21.88	1	
		20407	23	22.88	0	21.96	1	
	1M	20643	23	22.84	0	21.83	1	
		20525	23	22.89	0	21.96	1	
		20407	23	22.96	0	21.99	1	
	1L	20643	23	22.60	0	21.66	1	
		20525	23	22.73	0	21.88	1	
		20407	23	22.88	0	21.97	1	
	3H	20643	23	22.78	0	21.92	1	
		20525	23	22.78	0	21.95	1	
		20407	23	22.94	0	21.99	1	
	3M	20643	23	22.80	0	21.92	1	
		20525	23	22.83	0	21.99	1	
		20407	23	22.98	0	21.99	1	
	3L	20643	23	22.75	0	21.97	1	
		20525	23	22.76	0	21.94	1	
		20407	23	22.94	0	21.99	1	
	6	20643	23	21.72	1	20.96	2	
		20525	23	21.79	1	20.94	2	
		20407	23	21.94	1	20.90	2	
	3MHz	1H	20635	23	22.65	0	21.71	1
			20525	23	22.74	0	21.73	1
			20415	23	22.94	0	21.98	1
		1M	20635	23	22.81	0	21.85	1
			20525	23	22.91	0	21.83	1
			20415	23	22.95	0	21.95	1
1L		20635	23	22.74	0	21.76	1	
		20525	23	22.74	0	21.68	1	
		20415	23	22.95	0	21.96	1	
8H		20635	23	21.81	1	20.77	2	
		20525	23	21.80	1	20.93	2	
		20415	23	21.98	1	21.00	2	
8M		20635	23	21.86	1	20.85	2	
		20525	23	21.89	1	20.95	2	
		20415	23	21.92	1	20.98	2	
8L		20635	23	21.81	1	20.80	2	
		20525	23	21.88	1	20.96	2	
		20415	23	21.99	1	20.97	2	
15		20635	23	21.81	1	20.72	2	
		20525	23	21.88	1	20.88	2	
		20415	23	21.97	1	20.98	2	
5MHz		1H	20625	23	22.66	0	21.73	1
			20525	23	22.68	0	21.85	1
			20425	23	22.76	0	21.98	1
		1M	20625	23	22.90	0	21.95	1
			20525	23	23.00	0	21.99	1
			20425	23	22.98	0	21.98	1
	1L	20625	23	22.66	0	21.76	1	
		20525	23	22.77	0	21.89	1	
		20425	23	22.77	0	21.99	1	
	12H	20625	23	21.71	1	20.79	2	
		20525	23	21.79	1	20.89	2	
		20425	23	21.88	1	20.98	2	
	12M	20625	23	21.79	1	20.86	2	
		20525	23	21.85	1	20.98	2	
		20425	23	21.96	1	20.96	2	
	12L	20625	23	21.75	1	20.79	2	
		20525	23	21.82	1	20.91	2	
		20425	23	21.86	1	20.99	2	
	25	20625	23	21.74	1	20.67	2	
		20525	23	21.84	1	20.87	2	
		20425	23	21.91	1	20.98	2	



10MHz	1H	20600	23	22.66	0	21.72	1
		20525	23	22.66	0	21.66	1
		20450	23	22.84	0	21.99	1
	1M	20600	23	22.76	0	21.82	1
		20525	23	22.86	0	21.79	1
		20450	23	23.00	0	21.99	1
	1L	20600	23	22.66	0	21.83	1
		20525	23	22.82	0	21.70	1
		20450	23	22.93	0	21.98	1
	25H	20600	23	21.76	1	20.82	2
		20525	23	21.83	1	20.91	2
		20450	23	21.89	1	20.92	2
	25M	20600	23	21.85	1	20.93	2
		20525	23	21.90	1	20.94	2
		20450	23	21.95	1	20.97	2
	25L	20600	23	21.85	1	20.95	2
		20525	23	21.92	1	20.96	2
		20450	23	21.92	1	20.94	2
	50	20600	23	21.81	1	20.81	2
		20525	23	21.88	1	20.87	2
		20450	23	21.92	1	20.91	2

Table 11-6 LTE2500-FDD7 #1

LTE2500-FDD7 #1								
BandWidth	RB No./Start	Channel	Tune-up	Measured Power (dBm) & MPR				
				QPSK		16QAM		
				Measured Power	MPR	Measured Power	MPR	
5MHz	1H	21425	24	22.97	0	21.79	1	
		21100	24	23.23	0	22.13	1	
		20775	24	23.52	0	22.79	1	
	1M	21425	24	23.18	0	22.08	1	
		21100	24	23.51	0	22.44	1	
		20775	24	23.80	0	22.95	1	
	1L	21425	24	22.99	0	21.86	1	
		21100	24	23.32	0	22.20	1	
		20775	24	23.61	0	22.83	1	
	12H	21425	24	21.93	1	20.90	2	
		21100	24	22.21	1	21.20	2	
		20775	24	22.57	1	21.61	2	
	12M	21425	24	21.98	1	20.98	2	
		21100	24	22.27	1	21.27	2	
		20775	24	22.60	1	21.65	2	
	12L	21425	24	21.94	1	20.89	2	
		21100	24	22.22	1	21.22	2	
		20775	24	22.54	1	21.57	2	
	25	21425	24	21.94	1	20.81	2	
		21100	24	22.18	1	21.10	2	
		20775	24	22.52	1	21.48	2	
	10MHz	1H	21400	24	22.96	0	21.70	1
			21100	24	23.20	0	21.88	1
			20800	24	23.58	0	22.71	1
		1M	21400	24	23.09	0	21.90	1
			21100	24	23.46	0	22.15	1
			20800	24	23.74	0	22.86	1
1L		21400	24	23.03	0	21.86	1	
		21100	24	23.31	0	22.04	1	
		20800	24	23.70	0	22.75	1	
25H		21400	24	21.95	1	20.96	2	
		21100	24	22.25	1	21.15	2	
		20800	24	22.55	1	21.53	2	
25M		21400	24	21.93	1	20.97	2	
		21100	24	22.24	1	21.21	2	
		20800	24	22.56	1	21.46	2	
25L		21400	24	21.97	1	20.98	2	
		21100	24	22.24	1	21.20	2	
		20800	24	22.55	1	21.48	2	
50		21400	24	21.94	1	20.92	2	
		21100	24	22.24	1	21.17	2	
		20800	24	22.55	1	21.49	2	
15MHz		1H	21375	24	23.02	0	21.96	1
			21100	24	23.08	0	21.81	1
			20825	24	23.43	0	22.65	1
		1M	21375	24	23.16	0	22.13	1
			21100	24	23.34	0	22.04	1
			20825	24	23.63	0	22.77	1
	1L	21375	24	23.16	0	22.15	1	
		21100	24	23.28	0	22.04	1	
		20825	24	23.65	0	22.73	1	
	36H	21375	24	22.15	1	20.97	2	
		21100	24	22.40	1	21.25	2	
		20825	24	22.70	1	21.70	2	
	36M	21375	24	22.12	1	20.99	2	
		21100	24	22.43	1	21.30	2	
		20825	24	22.74	1	21.65	2	
	36L	21375	24	22.18	1	21.01	2	
		21100	24	22.46	1	21.27	2	
		20825	24	22.74	1	21.62	2	
	75	21375	24	22.15	1	21.00	2	
		21100	24	22.45	1	21.29	2	
		20825	24	22.72	1	21.60	2	



20MHz	1H	21350	24	22.73	0	21.88	1
		21100	24	22.88	0	22.02	1
		20850	24	23.16	0	22.60	1
	1M	21350	24	23.23	0	22.29	1
		21100	24	23.45	0	22.57	1
		20850	24	23.73	0	22.98	1
	1L	21350	24	22.95	0	22.04	1
		21100	24	23.16	0	22.40	1
		20850	24	23.42	0	22.74	1
	50H	21350	24	21.92	1	20.91	2
		21100	24	22.14	1	21.10	2
		20850	24	22.52	1	21.52	2
	50M	21350	24	21.97	1	20.88	2
		21100	24	22.23	1	21.15	2
		20850	24	22.54	1	21.48	2
	50L	21350	24	22.00	1	20.96	2
		21100	24	22.21	1	21.13	2
		20850	24	22.48	1	21.43	2
	100	21350	24	21.99	1	20.93	2
		21100	24	22.24	1	21.17	2
		20850	24	22.50	1	21.48	2

Table 11-7 LTE700-FDD12 #1

LTE700-FDD12 #1								
BandWidth	RB No./Start	Channel	Tune-up	Measured Power (dBm) & MPR				
				QPSK		16QAM		
				Measured Power	MPR	Measured Power	MPR	
1.4MHz	1H	23173	23	22.74	0	21.77	1	
		23095	23	22.77	0	21.81	1	
		23017	23	22.68	0	21.98	1	
	1M	23173	23	22.95	0	21.91	1	
		23095	23	22.89	0	21.91	1	
		23017	23	22.90	0	21.99	1	
	1L	23173	23	22.71	0	21.72	1	
		23095	23	22.78	0	21.83	1	
		23017	23	22.71	0	21.98	1	
	3H	23173	23	22.89	0	21.95	1	
		23095	23	22.87	0	21.91	1	
		23017	23	22.79	0	21.98	1	
	3M	23173	23	22.92	0	21.96	1	
		23095	23	22.87	0	21.94	1	
		23017	23	22.84	0	21.96	1	
	3L	23173	23	22.90	0	21.98	1	
		23095	23	22.92	0	21.94	1	
		23017	23	22.78	0	21.95	1	
	6	23173	23	21.86	1	20.96	2	
		23095	23	21.88	1	20.95	2	
		23017	23	21.77	1	20.96	2	
	3MHz	1H	23165	23	22.80	0	21.73	1
			23095	23	22.81	0	21.63	1
			23025	23	22.79	0	21.85	1
		1M	23165	23	22.91	0	21.86	1
			23095	23	22.76	0	21.74	1
			23025	23	22.87	0	21.88	1
1L		23165	23	22.82	0	21.84	1	
		23095	23	22.70	0	21.66	1	
		23025	23	22.73	0	21.96	1	
8H		23165	23	21.82	1	20.83	2	
		23095	23	21.74	1	20.85	2	
		23025	23	21.72	1	20.77	2	
8M		23165	23	21.87	1	20.91	2	
		23095	23	21.73	1	20.90	2	
		23025	23	21.73	1	20.83	2	
8L		23165	23	21.85	1	20.90	2	
		23095	23	21.78	1	20.87	2	
		23025	23	21.69	1	20.79	2	
15		23165	23	21.81	1	20.80	2	
		23095	23	21.77	1	20.84	2	
		23025	23	21.69	1	20.73	2	
5MHz		1H	23155	23	22.81	0	21.79	1
			23095	23	22.78	0	21.87	1
			23035	23	22.62	0	21.95	1
		1M	23155	23	22.98	0	21.97	1
			23095	23	22.96	0	21.92	1
			23035	23	22.87	0	21.99	1
	1L	23155	23	22.79	0	21.80	1	
		23095	23	22.75	0	21.81	1	
		23035	23	22.59	0	21.96	1	
	12H	23155	23	21.77	1	20.87	2	
		23095	23	21.74	1	20.84	2	
		23035	23	21.74	1	20.92	2	
	12M	23155	23	21.84	1	20.91	2	
		23095	23	21.78	1	20.87	2	
		23035	23	21.75	1	20.93	2	
	12L	23155	23	21.76	1	20.86	2	
		23095	23	21.77	1	20.89	2	
		23035	23	21.58	1	20.81	2	
	25	23155	23	21.79	1	20.77	2	
		23095	23	21.78	1	20.81	2	
		23035	23	21.67	1	20.75	2	



10MHz	1H	23130	23	22.81	0	21.79	1
		23095	23	22.75	0	21.67	1
		23060	23	22.82	0	21.96	1
	1M	23130	23	22.82	0	21.87	1
		23095	23	22.85	0	21.73	1
		23060	23	22.79	0	21.98	1
	1L	23130	23	22.70	0	21.75	1
		23095	23	22.67	0	21.57	1
		23060	23	22.71	0	21.65	1
	25H	23130	23	21.85	1	20.96	2
		23095	23	21.86	1	20.88	2
		23060	23	21.72	1	20.77	2
	25M	23130	23	21.88	1	20.98	2
		23095	23	21.81	1	20.85	2
		23060	23	21.76	1	20.83	2
	25L	23130	23	21.84	1	20.96	2
		23095	23	21.85	1	20.91	2
		23060	23	21.66	1	20.72	2
	50	23130	23	21.89	1	20.91	2
		23095	23	21.84	1	20.85	2
		23060	23	21.72	1	20.75	2

Table 11-8 LTE750-FDD13 #1

LTE 750-FDD 13 #1								
				Measured Power (dBm) & MPR				
BandW idth	RB No./Start	Channel	Tune-up	Q PSK		16Q AM		
				Measured Power	MPR	Measured Power	MPR	
5M Hz	1H	23255	24	23.12	0	22.17	1	
		23230	24	23.19	0	22.22	1	
		23205	24	23.11	0	22.68	1	
	1M	23255	24	23.34	0	22.40	1	
		23230	24	23.43	0	22.54	1	
		23205	24	23.34	0	22.92	1	
	1L	23255	24	23.17	0	22.22	1	
		23230	24	23.17	0	22.34	1	
		23205	24	23.10	0	22.65	1	
	12H	23255	24	22.28	1	21.30	2	
		23230	24	22.24	1	21.33	2	
		23205	24	22.17	1	21.34	2	
	12M	23255	24	22.26	1	21.33	2	
		23230	24	22.29	1	21.43	2	
		23205	24	22.31	1	21.45	2	
	12L	23255	24	22.20	1	21.26	2	
		23230	24	22.26	1	21.40	2	
		23205	24	22.30	1	21.44	2	
	25	23255	24	22.22	1	21.18	2	
		23230	24	22.29	1	21.33	2	
		23205	24	22.29	1	21.31	2	
	10M Hz	1H	H	/	/	0	/	1
			M	/	/	0	/	1
			23230	24	23.20	0	22.50	1
		1M	H	/	/	0	/	1
			M	/	/	0	/	1
			23230	24	23.31	0	22.72	1
1L		H	/	/	0	/	1	
		M	/	/	0	/	1	
		23230	24	23.21	0	22.53	1	
25H		H	/	/	1	/	2	
		M	/	/	1	/	2	
		23230	24	22.42	1	21.41	2	
25M		H	/	/	1	/	2	
		M	/	/	1	/	2	
		23230	24	22.37	1	21.40	2	
25L		H	/	/	1	/	2	
		M	/	/	1	/	2	
		23230	24	22.41	1	21.48	2	
50		H	/	/	1	/	2	
		M	/	/	1	/	2	
		23230	24	22.43	1	21.46	2	

11.4 Wi-Fi and BT Measurement result

The output power of BT antenna is as following:

Table 11-9 Bluetooth Power

Bluetooth Power				
Mode	Channel	Frequency	Tune-up	Measured
GFSK	78	2480 MHz	6.5	5.08
	39	2441 MHz	6.5	6.19
	0	2402 MHz	6.5	5.29
EDR2M-4_DQPSK	78	2480 MHz	5.5	4.01
	39	2441 MHz	5.5	5.03
	0	2402 MHz	5.5	4.16
EDR3M-8DPSK	78	2480 MHz	5	3.96
	39	2441 MHz	5	4.9
	0	2402 MHz	5	4.22

The average conducted power for Wi-Fi is as following: