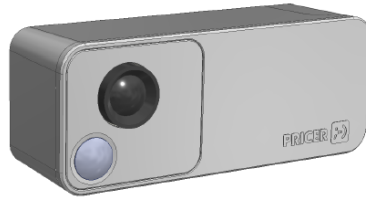


ShelfVision

User manual



PRICER

Intended use

Pricer ShelfVision is a wireless camera designed for integration with the Pricer store automation system. The camera is mounted in the store aisles and can be instructed to take pictures of the opposite shelves. Using image processing and AI the system can then e.g., detect if there is a need of replenishing the shelves with goods.

The ShelfVision can also be used for Pricer Label positioning as it can communicate with the surrounding Pricer Labels and then send the location information to the Pricer System.

Contact information

PRICER

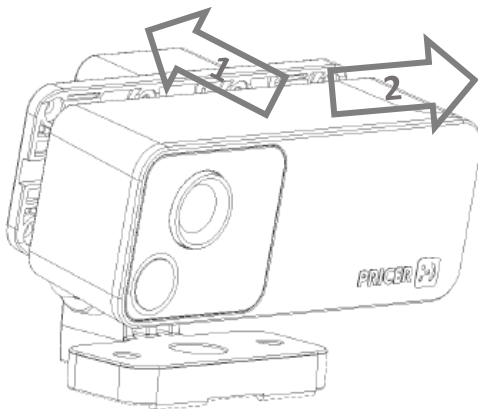
www.pricer.com

Västra Järnvägsgatan 7
SE-111 64 Stockholm, Sweden

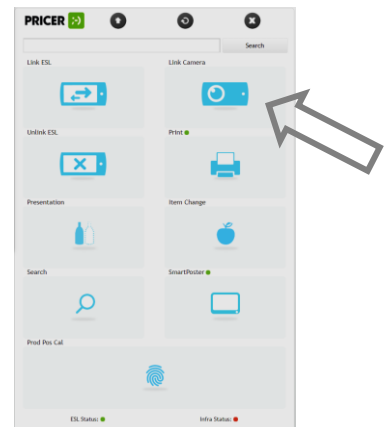
Version: 1553-55161 Rev G
© 2021 Pricer AB,
All rights reserved

Installation

- 1 Attach the ShelfVision to the holder.



- 2 Link the ShelfVision to the system by scanning the barcode with the Pricer SmartAPP.



- 3 Successful linking is indicated in the SmartAPP and a short blink of the ShelfVision status LED.

- 4 Additional information about the ShelfVision can be found at partner.pricer.com.

Disposal

Waste of electrical and electronic equipment must not be disposed as unsorted municipal waste (RoHS and WEEE). Dispose the product separately in accordance with applicable federal, state and local regulations.

Specifications

- Model name: Pricer ShelfVision
- Model number: 66310-00
- Size: 86 x 34 x 32 mm
- Weight: 100 g
- Operating temp.: +5°C – +40°C

Accessories

- 51410 Adjustable Camera Holder
- 51404 Protective Adjustable Camera Holder
- 51405 Removal Tool

Compliance

FCC compliance statement

Caution: The user is cautioned that changes or modifications not expressly approved by the party responsible for compliance could void the user's authority to operate the equipment.

Note: This equipment has been tested and found to comply with the limits for a Class B digital device, pursuant to part 15 of the FCC Rules. These limits are designed to provide reasonable protection against harmful interference in a residential installation. This equipment generates, uses and can radiate radio frequency energy and, if not installed and used in accordance with the instructions, may cause harmful interference to radio communications. However, there is no guarantee that interference will not occur in a particular installation. If this equipment does cause harmful interference to radio or television reception, which can be determined by turning the equipment off and on, the user is encouraged to try to correct the interference by one or more of the following measures:

- Reorient or relocate the receiving antenna.
- Increase the separation between the equipment and receiver.
- Connect the equipment into an outlet on a circuit different from that to which the receiver is connected.
- Consult the dealer or an experienced radio/TV technician for help.

This equipment complies with FCC's RF radiation exposure limits set forth for an uncontrolled environment. End user must follow the specific operating instructions for satisfying RF exposure compliance. This transmitter must not be co-located or operating in conjunction with any other antenna or transmitter.

Industry Canada certification/Certification Industrie Canada

This device complies with Part 15 of the FCC Rules and Industry Canada licence-exempt RSS standard(s). Operation is subject to the following two conditions:

(1) this device may not cause interference, and (2) this device must accept any interference, including interference that may cause undesired operation of the device.

This Class B digital apparatus complies with Canadian ICES-003.

This equipment complies with FCC and IC RF radiation exposure limits set forth for uncontrolled environments. This equipment should be installed and operated with a minimum distance of 20cm (may be adjusted according to actual calculation result) between the radiator and your body.

This transmitter must not be co-located or operating in conjunction with any other antenna or transmitter.

French

Le présent appareil est conforme aux Partie 15 des règlements de la FCC et CNR d'Industrie Canada applicables aux appareils radio exempts de licence. L'exploitation est autorisée aux deux conditions suivantes :

(1) l'appareil ne doit pas produire de brouillage, et (2) l'utilisateur de l'appareil doit accepter tout brouillage radioélectrique subi, même si le brouillage est susceptible d'en compromettre le fonctionnement.

Cet appareil numérique de la classe B est conforme à la norme NMB-003 du Canada.

Cet appareil est conforme aux limites d'exposition au rayonnement RF stipulées par la FCC et IC pour une utilisation dans un environnement non contrôlé. Les antennes utilisées pour cet émetteur doivent être installées et doivent fonctionner à au moins 20 cm de distance des utilisateurs et ne doivent pas être placées près d'autres antennes ou émetteurs ou fonctionner avec ceux-ci. Les installateurs doivent s'assurer qu'une distance de 20 cm sépare l'appareil (à l'exception du combiné) des utilisateurs.

CE

This equipment is not suitable for use in locations where children are likely to be present.

Certification

Hereby Pricer AB declares that the radio equipment type ShelfVision is in compliance with Directive 2014/53/EU. The full text of the EU declaration of conformity is available at the following web address: partner.pricer.com

United Kingdom

This equipment is not suitable for use in locations where children are likely to be present.

Certification

Hereby Pricer AB declares that the radio equipment type ShelfVision is in compliance with The Radio Equipment Regulations 2017. The full text of the UK declaration of conformity is available at the following web address: partner.pricer.com



FCC ID: 2ACC866310
IC: 20234-66310

This device is restricted to indoor use only when operating in the 5150 to 5350 MHz frequency range in the following countries:

AT	BE	BG	HR	CY	CZ	DK	
EE	FI	FR	DE	EL	HU	IE	
IT	LV	LT	LU	MT	NL	PL	
PT	RO	SK	SI	ES	SE	UK(NI)	
IS	LI	NO	CH	TR			

Standard	Frequency band	Max. output power
802.11b/g/n:	2412MHz - 2472MHz	17.55dBm
802.11a/n:	5180MHz - 5700MHz	17.75dBm