

Annex 2: External photographs to
TEST REPORT
 No.: 18-1-0026601T05b

According to:

FCC Regulations
 Part 20, Section 20.21
ISED-Regulations
 RSS-131, Issue 3

for
 Kathrein Automotive GmbH

LTE Kompensator US
 Compensator US

FCC-ID: 2ACC7LTECOMPB1
ISED: 11980A-LTECOMPB1







Laboratory Accreditation and Listings			
 <p align="center">D-PL-12047-01-04 Accredited EMC-Test Laboratory</p>	 <p align="center">MRA US-EU 0003</p>	 <p align="center">Reg. No.: 3462D-2 Reg. No.: 3462D-3</p>	 <p align="center">Voluntary Controls for Electromagnetic Emissions</p> <p align="center">Reg. No.: R-2666 C-2914, T-1967, G-301</p>
 <p align="center">AUTHORIZED RF LABORATORY</p>	 <p align="center">Lab Code: 20011130-00</p>		
accredited according to DIN EN ISO/IEC 17025			
<p align="center">CETECOM GmbH Laboratory Radio Communications & Electromagnetic Compatibility Im Teelbruch 116 • 45219 Essen • Germany Registered in Essen, Germany, Reg. No.: HRB Essen 8984 Tel.: + 49 (0) 20 54 / 95 19-954 • Fax: + 49 (0) 20 54 / 95 19-964 E-mail: info@cetecom.com • Internet: www.cetecom.com</p>			

TABLE OF CONTENTS:

1. EXTERNAL PHOTOGRAPHS..... 3

 1.1. Equipment Under Test (EUT)-Radiated Test Sample 3

 1.2. Accessories..... 6

1. External photographs

1.1. Equipment Under Test (EUT)-Radiated Test Sample



Photograph 1: EUT A - front view



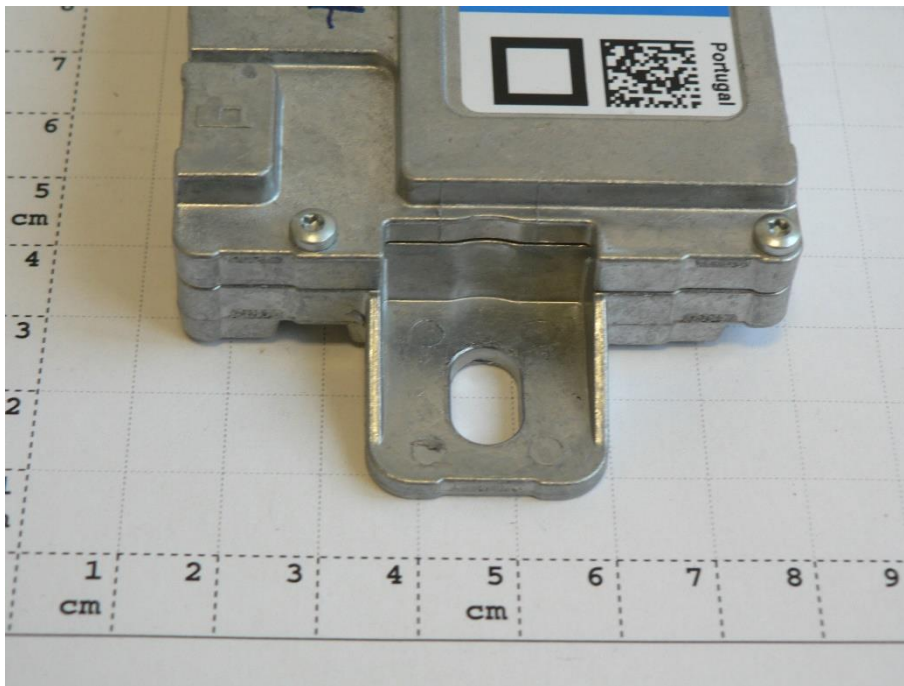
Photograph 2: EUT A - rear view



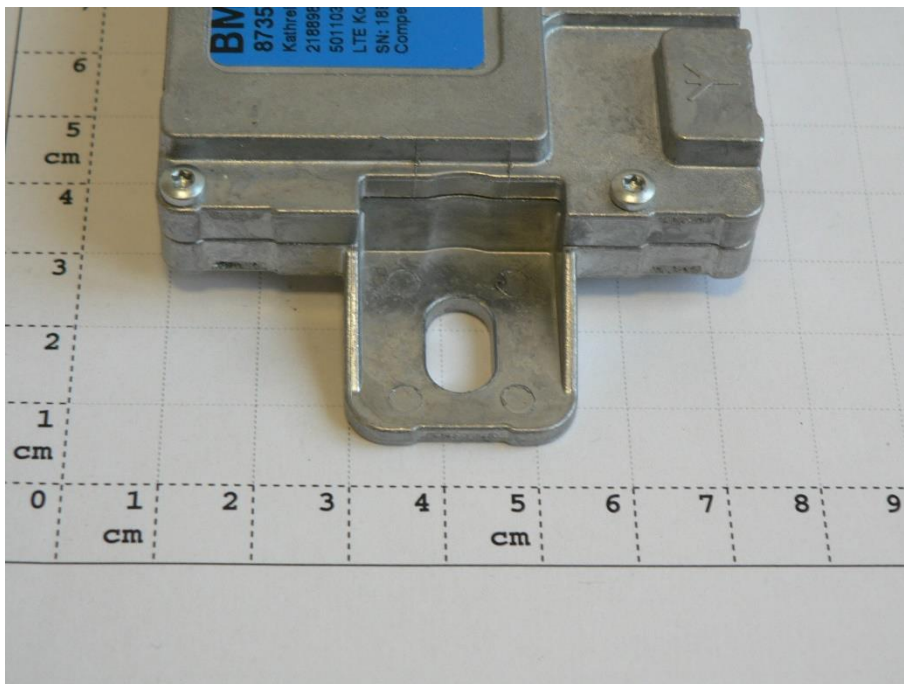
Photograph 3: EUT A - under view (connectors side)



Photograph 4: EUT A - top side view

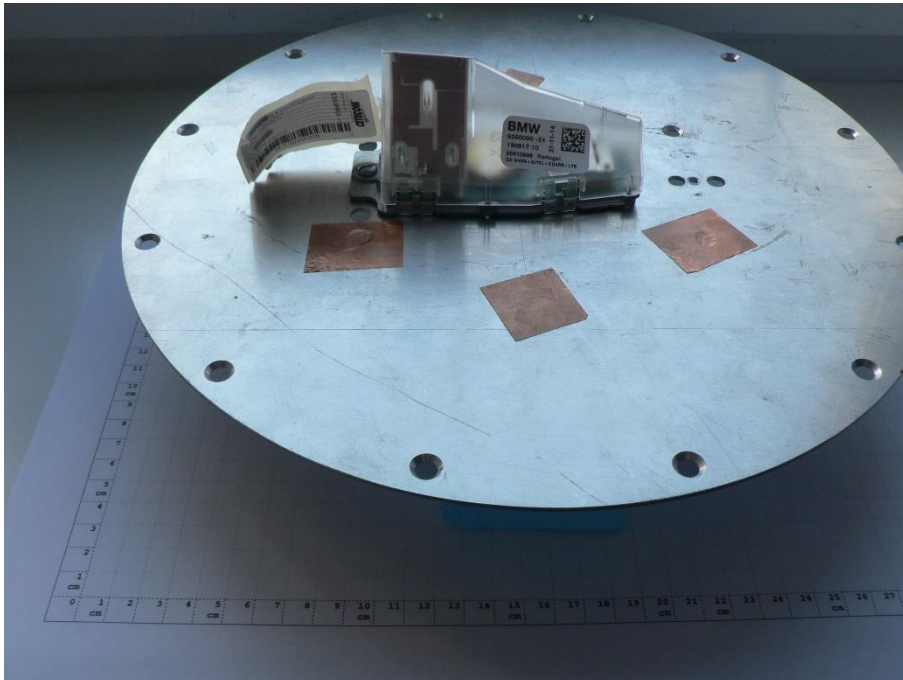


Photograph 5: EUT A - Right side view



Photograph 6: EUT A - Left side view

1.2. Accessories



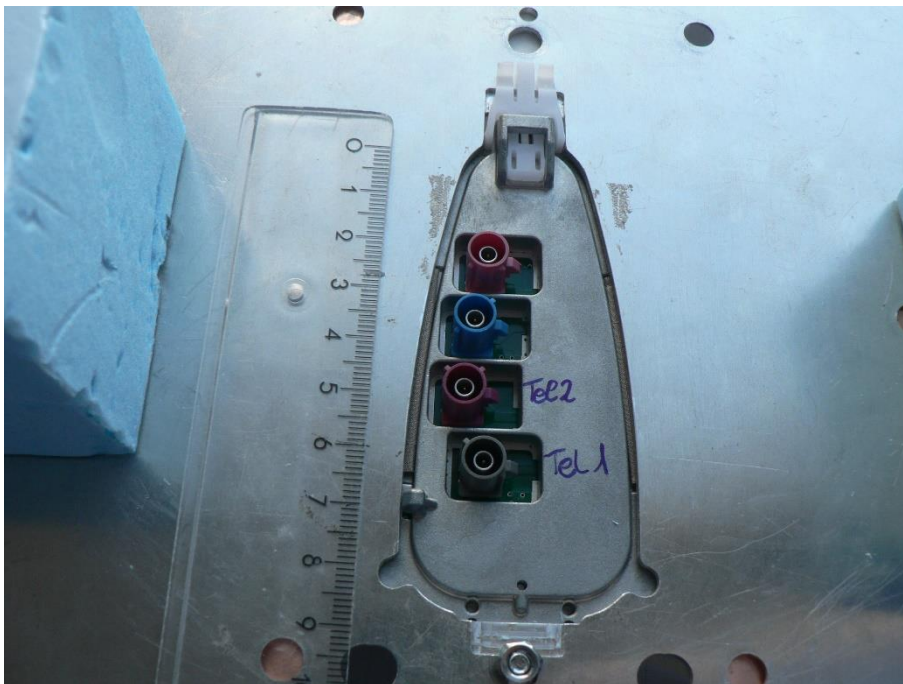
Photograph 7: Antenna (AE1) Overall view mounted on metal plate (AE4)



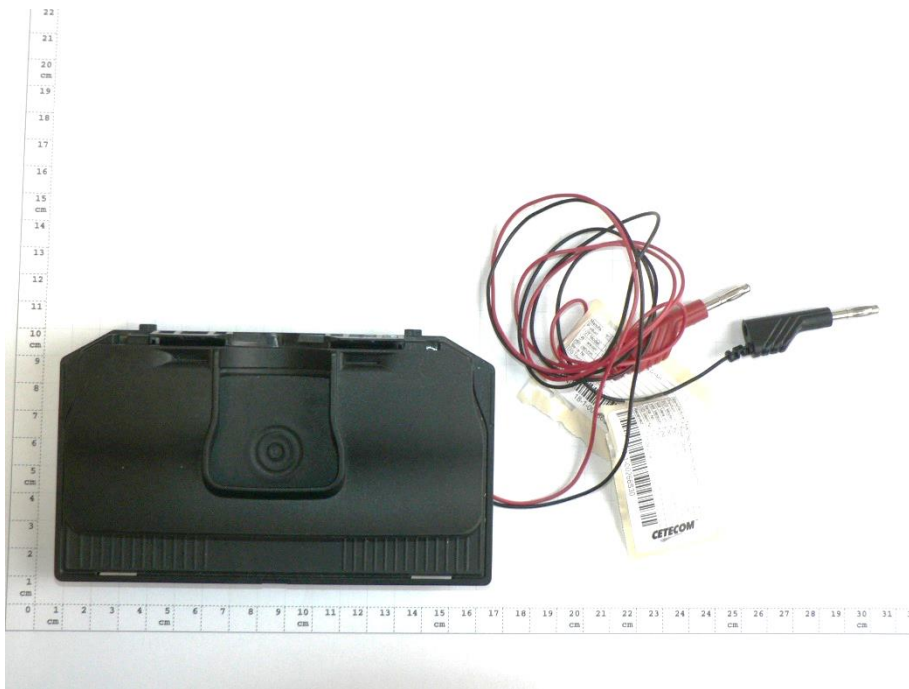
Photograph 8: Antenna (AE1) Overall view right side



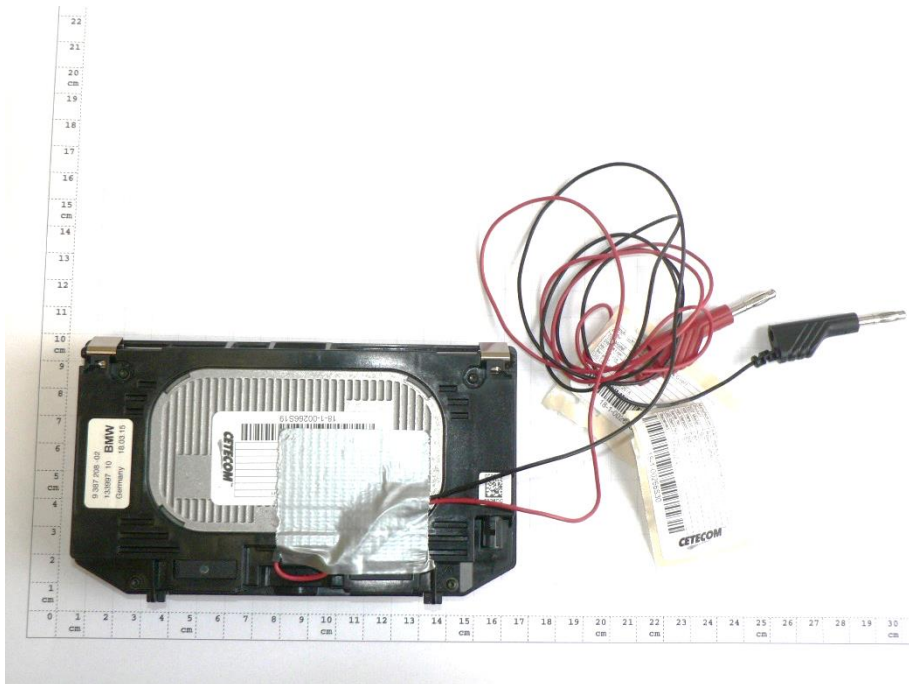
Photograph 9: Antenna (AE1) Overall view left side



Photograph 10: Antenna (AE1) Overall view connectors side



Photograph 11: AE 2 cradle front side



Photograph 12: AE 2 cradle rear side