



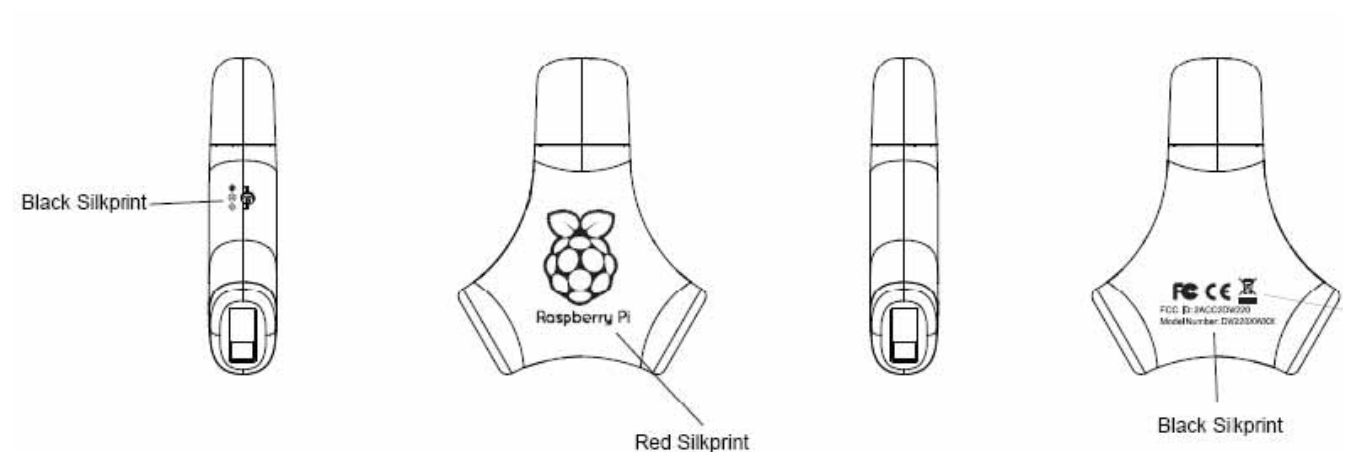
USB HUB and wifi dual function dongle

This wireless dongle is easy to use and easy to set up. It provides high-speed Internet access. It is with two USB ports which support USB peripheral expansion as you need. If you are tired of dealing with all those messy wires to connect your devices to your network - then this is the perfect item for you.

Main Features:

- Provides max. 150Mbps receiving rate and 150Mbps sending rate
- Supports 20MHz/40MHz frequency width
- IEEE 802.11 Standards Supported 11b,11g,11n
- Auto-detects and changes network transmission rate
- Network architecture: Infrastructure , Ad-Hoc and Wi-Fi direct
- Supports IEEE 802.1X, WEP, WPA/WPA2 ,TKIP, IEEE 802.11i, Cisco CCX, WAPI
- Supports WMM to make your voice and video more smooth
- Transmission Power 15dbm
- Operating Frequency 2.4MHz-2.497MHz
- Storage Humidity 5% ~ 90% RH non-condensing
- Operating Humidity 10% ~90% RH non-condensing
- Dual USB 2.0 ports
- One charge hole

Product overview:



System Requirement:

Windows XP

Win7

Driver Installation

Before you use the USB Wi-Fi dongle, you need to make sure your computer has installed Broadcom Wireless LAN Driver, which is contained in the attached CD. Follow the steps below to install the driver in your computer. Suppose you use windows XP system:

Put the CD in the disk driver, and click it to open in your computer, you can see a file



, decompress the file and put the file in the chosen directory comment.



When you insert the dongle into the computer the Wizard window will pop up. Choose install from a list or specific location and click Next to continue:

:



Choose *Include this location in the search* and click browse to choose the subfolder of the file you just decompressed before:

Found New Hardware Wizard

Please choose your search and installation options.



Search for the best driver in these locations.

Use the check boxes below to limit or expand the default search, which includes local paths and removable media. The best driver found will be installed.

Search removable media (floppy, CD-ROM...)

Include this location in the search:

C:\Documents and Settings\vegoman\Desktop\Wind

Browse

Don't search. I will choose the driver to install.

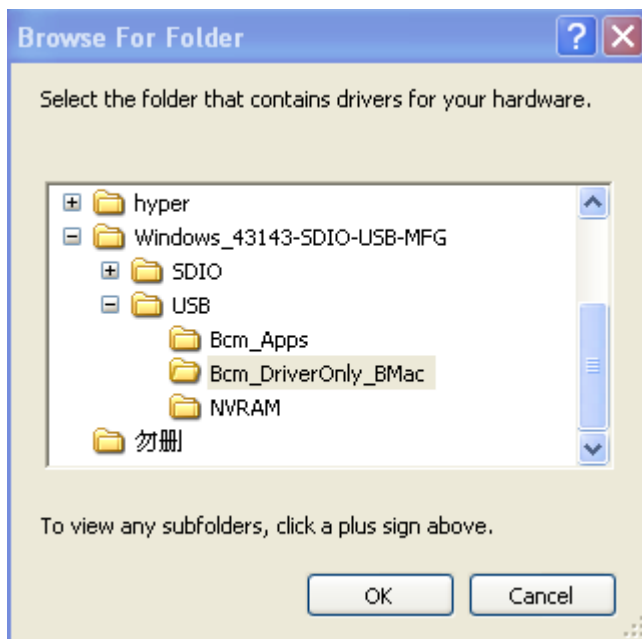
Choose this option to select the device driver from a list. Windows does not guarantee that the driver you choose will be the best match for your hardware.

< Back

Next >


Cancel

Click OK to continue:



Click Finish to finish the installation.



After you successfully installed the driver in the computer, the computer will detect it automatically. The task bar will show this icon , and the computer will detect wireless connections automatically. Choose a connection to use. Next time you use the dongle, insert the dongle directly into the computer and it will help to connect the Internet without installation.

As for Win7

The dongle also support Win7. The installation process is similar to the window XP.

This USB dongle is with 2 expanded USB ports which support to connect peripheral equipment like keyboard and mouse.

FCC Statement

Changes or modifications not expressly approved by the party responsible for compliance could void the user's authority to operate the equipment

NOTE:THE MANUFACTURER IS NOT RESPONSIBLE FOR ANY RADIO OR TV INTERFERENCE CAUSED BY UNAUTHORIZED MODIFICATIONS TO THIS EQUIPMENT.SUCH MODIFICATIONS COULD VOID THE USER'S AUTHORITY TO OPERATE THE EQUIPMENT.

NOTE: This equipment has been tested and found to comply with the limits for a Class B digital device, pursuant to Part 15 of the FCC Rules. These limits are designed to provide reasonable protection against harmful interference in a residential installation. This equipment generates, uses and can radiate radio frequency energy and, if not installed and used in accordance with the instructions, may cause harmful interference to radio communications. However, there is no guarantee that interference will not occur in a particular installation. If this equipment does cause harmful interference to radio or television reception, which can be determined by turning the equipment off and on, the user is encouraged to try to correct the interference by one or more of the following measures:

- Reorient or relocate the receiving antenna.
- Increase the separation between the equipment and receiver.
- Connect the equipment into an outlet on a circuit different
from that to which the receiver is connected.
- Consult the dealer or an experienced radio/TV technician for help.

This device complies with Part 15 of the FCC Rules. Operation is subject to the following two conditions: (1) this device may not cause harmful interference, and (2) this device must accept any interference received, including interference that may cause undesired operation.

This equipment complies with FCC radiation exposure limits set forth for an uncontrolled environment. End users must follow the specific operating instructions for satisfying RF exposure compliance. This transmitter must not be co-located or operating in conjunction with any other antenna or transmitter. This equipment has been SAR-evaluated for use in hand. SAR measurements are based on a 0mm spacing from the body and that compliance is achieved at that distance.