

# INSTRUCTION MANUAL >>>



Helmet Bluetooth® Intercom Kit



FDC VB

English

français

Español

Italiano

Deutsch

Русский

日本語

## Contents:

1. Welcome .....	3
1.1 Product Features .....	3
2. Parts List .....	3
3. Installation Method for Helmet Application .....	4
4. Product Controls .....	4
5. Functions and Operation of Buttons .....	5
5.1 On/Off Button and Intercom Button .....	5
5.2 Multi-function Button(MFB.) .....	5
5.3 Jog Wheel .....	6
6. Pairing Methods .....	6
6.1 Pairing with Mobile Phone,MP3 and GPS .....	6
6.2 Pairing Between Two FDCs .....	6
6.3 Pairing Between Three FDCs .....	7
7. Charging the Bluetooth Device .....	7
8. Technical Specifications .....	7
9. About Maintenance .....	8
10. Tips & Troubleshooting .....	8

## 1. Welcome

Thank you for choosing FreedConn FDC VB Helmet Bluetooth intercom. By doing so you now have the assurance and peace of mind that comes with purchasing a product made by one of the leading manufacturers. All products brought to you are manufactured to the highest standards of performance and safety and, as part of our philosophy of customer service and satisfaction, are backed by our comprehensive 1 Year Warranty. We hope you will enjoy using your purchase for many years to come.



### 1.1 Product Features

- 500m bluetooth intercom range between riders.
- Conduct calls on mobile phone.
- Enjoy the music through cell phone/MP3, receive GPS information.
- Built-in FM radio.

## 2. Parts List



- ❶ 1(2)xBluetooth Device



- ❷ 1(2)xHeadset Clamp



- ❸ 1(2)xMicrophone & Speakers



- ❹ 4(8)xHeadphone VELCRO



- ❺ 1(2)xUSB Cable

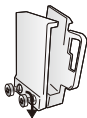


- ❻ 1(2)xPower Adaptor  
(Different adaptors for different Countries)

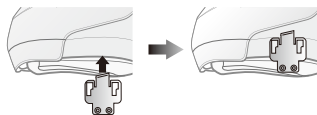


- ❼ 1(2)xScrew Driver

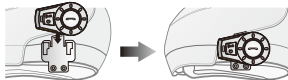
### 3. Installation Method for Helmet Application



- ❶ Loosen the screws on the back of clamp with the provided screw driver.



- ❷ Open the lining of helmet, insert the clamp in the proper position on the left of helmet and fasten the screw (overly fastened screw can damage the clamp)



- ❸ Slide the receiver down into the slots on the headset clamp mount. Make sure that it is locked in securely.



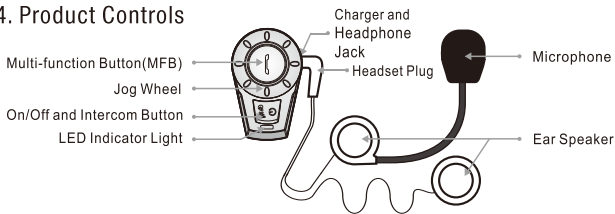
- ❹ Open the lining of helmet (at ear's position), clean the EPS surface and affix the velcro on with the rough surface.

- ❺ Affix the hook surface of speaker to the rough surface of velcro and properly tidy the helmet lining.



- ❻ Insert the headphone plug into the corresponding headphone jack on the receiver to finish the installation.

### 4. Product Controls



## 5. Functions and Operation of Buttons

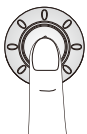
### 5.1 On/Off and Intercom Button



- 5.1.1 On
- 5.1.2 Off
- 5.1.3 Start the Bluetooth Intercom
- 5.1.4 End the Bluetooth Intercom
- 5.1.5 Switch Between Intercom and Music/FM Radio

5.1.1	Press down for 3 seconds until you hear a beep. The blue light will flash 3 times swiftly and then turn into regular intervals.
5.1.2	Press down for 5 seconds until you hear a beep. The blue light will be on for a while and then die out.
5.1.3	Shortly press the button on either one of the two paired FDC and a voice prompt will be heard after completing the intercom connection.
5.1.4	Shortly press the button and intercom closes after a "bee" prompt tone.
5.1.5	Shortly press the button and a "bee" prompt tone can be heard.

### 5.2 Multi-function Button(MFB.)



- 5.2.1 Answer calls
- 5.2.2 Reject calls
- 5.2.3 Ending the call
- 5.2.4 Redial the last number
- 5.2.5 Play/Pause FM radio
- 5.2.6 Play/Pause Music
- 5.2.7 Switch Between Music and FM Radio
- 5.2.8 To Answer a Call While Listening to Music

5.2.1	Press the MFB. once. The incoming call will answer automatically once the phone has rung for 15 seconds.
5.2.2	Press down the MFB. for 2 seconds until you hear a beep.
5.2.3	Press the MFB. once to end the call.
5.2.4	Press and hold the MFB. for 2 seconds until you hear "bee" and release your finger.
5.2.5	Double press the MFB. to start/stop FM Radio. When there is no call or intercom.
5.2.6	Press once the MFB. to start/stop music on your phone when the music player is running.
5.2.7	Shortly press the MFB. once time to music, Double press the MFB. to FM Radio.
5.2.8	Calls will automatically come through the headset while music is playing. Music will hold over the call duration and resume automatically once the call has ended.

## 5.3 Jog Wheel

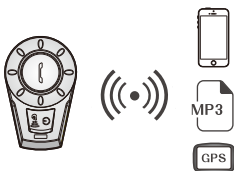


- 5.3.1 FM channel
- 5.3.2 Music play control
- 5.3.3 Volume control

5.3.1	Turn the Jog Wheel clockwise to switch to next channel. Turn the Jog Wheel counter clockwise to return to the previous channel.
5.3.2	Turn the Jog Wheel clockwise to switch to next song. Turn the Jog Wheel counter clockwise to return to the previous song.
5.3.3	Volume Up by turning the Jog Wheel anticlockwise and holding until the volume reaches the right level; Volume Down by turning the Jog Wheel clockwise and holding until the volume reaches the right level. You will hear a long beep if the volume reaches the highest or lowest level.

## 6. Pairing Methods

### 6.1 Pairing with Mobile Phone, MP3 and GPS



**Step 1:** Ensure FDC is off and within 1m visible range of the Bluetooth device to be paired.

**Step 2:** Press down the FDC On/Off and Intercom button for 8 seconds until you see the red light and blue light flash alternatively, it means FDC enter pairing status.

**Step 3:** Start the Bluetooth device to be paired, search and choose FDC VB to pair. When you see the blue light flashes regularly, it means pairing is successful.

### 6.2 Pairing Between Two FDCs

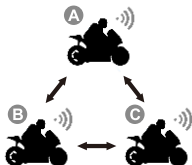


**Step 1:** Ensure both FDCs are off and within 1m visible range of each other.

**Step 2:** Press down both FDCs On/Off and Intercom button for 8 seconds until you see the red light and blue light flash alternatively, both FDCs enter pairing status.

**Step 3:** Quickly press the On/Off button on either FDC. Then it will search for the other FDC for pairing. When the blue light flashes regularly it means pairing is successful.

## 6.3 Pairing between three FDCs

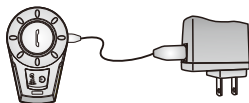


**Step 1:** Firstly, pair two devices A and B as described above. Secondly, turn off A and B, pair A and C as described of 6.2. Thirdly, turn off C and A, pair B and C as described of 6.2. At last turn on A.

**Step 2:** Pressing the On/Off and Intercom button of A 1 time to call C and 2 times to call B.  
Pressing the button of B 1 time to call C and 2 times to call A.  
Pressing the button of C 1 time to call B and 2 times to call A.

## 7. Charging the Bluetooth® Device

1. Before using this device, fully charge the Bluetooth® device.



2. Red light will be on during recharging and die out when the battery is full.

**Tips 1:** To maintain long life from the internal polymer battery, charge your device at least once each month.

**Tips 2:** If the red light is off when it's charging, maybe the voltage is too low. It's better to charge 0.5-1 hours then recheck if the bluetooth receiver is successfully charged.

## 8. Technical Specifications

Frequency: 2.4GHz

Weight: 45grams(excluding accessories)

Size: 83mm(L)x54mm(W)x30mm(H)

Battery Type: Rechargeable Polymer 350mAh

Stand by: Up to 300 hours

Talking Time: -Phone: Up to 10 hours

-Intercom: Up to 5 hours

Charging Time: About 2.5 hours

Power Adaptor: DC 5V 500mA

## 9. About Maintenance

- (1) Do not place the product at very high (or low) temperatures, with an optimum storage environment of -40 to +60 degrees, otherwise it will affect the product's life.
- (2) Keep away from the fire.
- (3) Keep away from the sharp object, or it may cause scratches or damage on the product.
- (4) Do not try to disassemble the FDC.
- (5) For a long time without using, please put the FDC at a dry place, and make sure one charging per month in order to guarantee the performance.

## 10. Tips & Troubleshooting

Problem	Solution
The Bluetooth Receiver has no power.	The headset must be charged for at least 2.5 hours prior to first use. Refer to Charging the Bluetooth Device on page 7 for further details.
My Phone won't pair with the Bluetooth Receiver.	Activate the Bluetooth function on your mobile phone and search for the device which will show up as FDCVB on the Device List. Refer to your phone's instructions to do this. Refer to Pairing to your Bluetooth Enabled Mobile Phone on page 6 for further details.
The audio reception breaks down	Bluetooth enabled devices are susceptible to occasional interference from other common devices such as GPS units, laptops, alarms and Wifi routers etc. Move away from potential sources of interference if you are experiencing problems.
I can't hear my music /incoming calls	Check the volume on the attached device. Setting your phone or MP3 player to the maximum volume usually resolves this issue.



## **Federal Communications Commission (FCC) Statement**

This device complies with part 15 of the FCC Rules. Operation is subject to the following two conditions: (1) This device may not cause harmful interference, and (2) this device must accept any interference received, including interference that may cause undesired operation.

**Note:** This equipment has been tested and found to comply with the limits for a Class B digital device, pursuant to part 15 of the FCC Rules. These limits are designed to provide reasonable protection against harmful interference in a residential installation. This equipment generates, uses and can radiate radio frequency energy and, if not installed and used in accordance with the instructions, may cause harmful interference to radio communications. However, there is no guarantee that interference will not occur in a particular installation. If this equipment does cause harmful interference to radio or television reception, which can be determined by turning the equipment off and on, the user is encouraged to try to correct the interference by one or more of the following measures:

- Reorient or relocate the receiving antenna.
- Increase the separation between the equipment and receiver.
- Connect the equipment into an outlet on a circuit different from that to which the receiver is connected.
- Consult the dealer or an experienced radio/TV technician for help.

**Warning:** Changes or modifications made to this device not expressly approved by **ShenZhen FreedConn(FDC) Electronics Co., Ltd** may void the FCC authorization to operate this device.

**Note:** The manufacturer is not responsible for any radio or TV interference caused by unauthorized modifications to this equipment. Such modifications could void the user's authority to operate the equipment.