

## Internal Photographs



Figure 1. Enclosure, Cover Removed



**Figure 2. PCB Removed from the Enclosure**

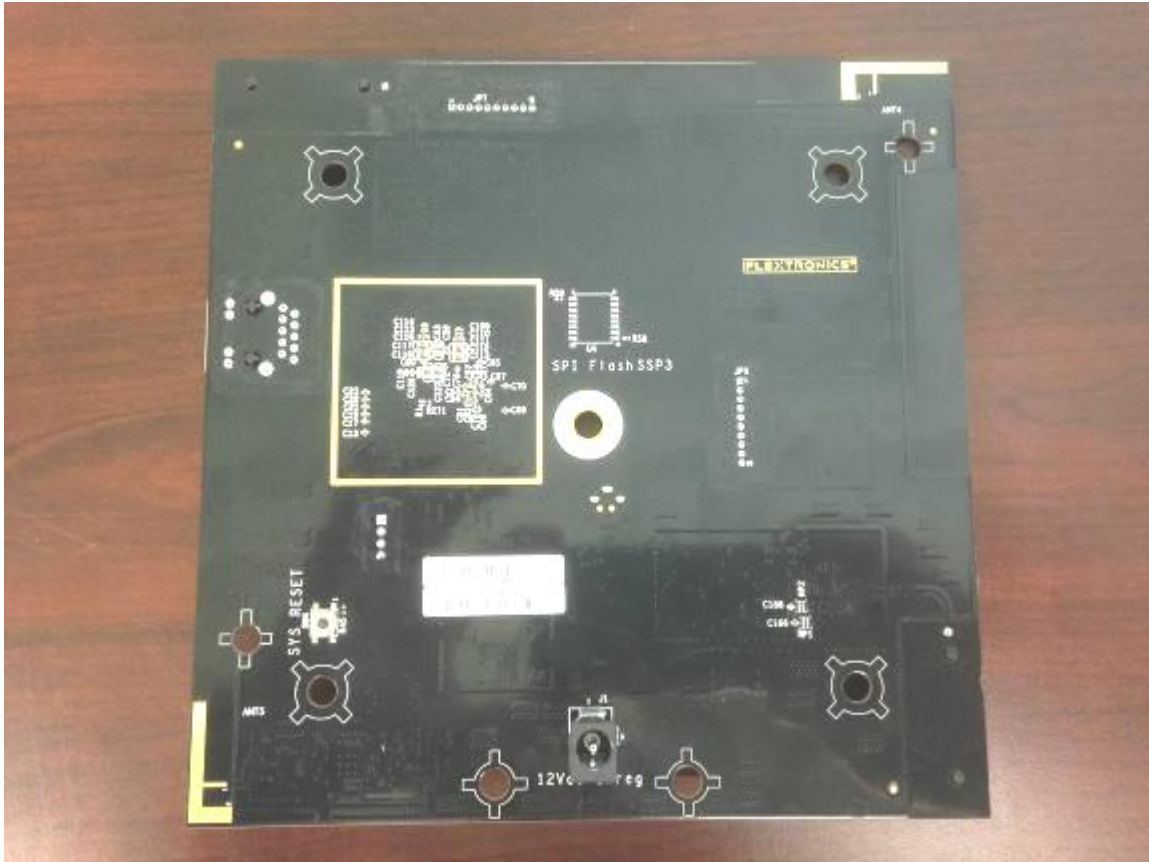


Figure 3. PCB Solder Side

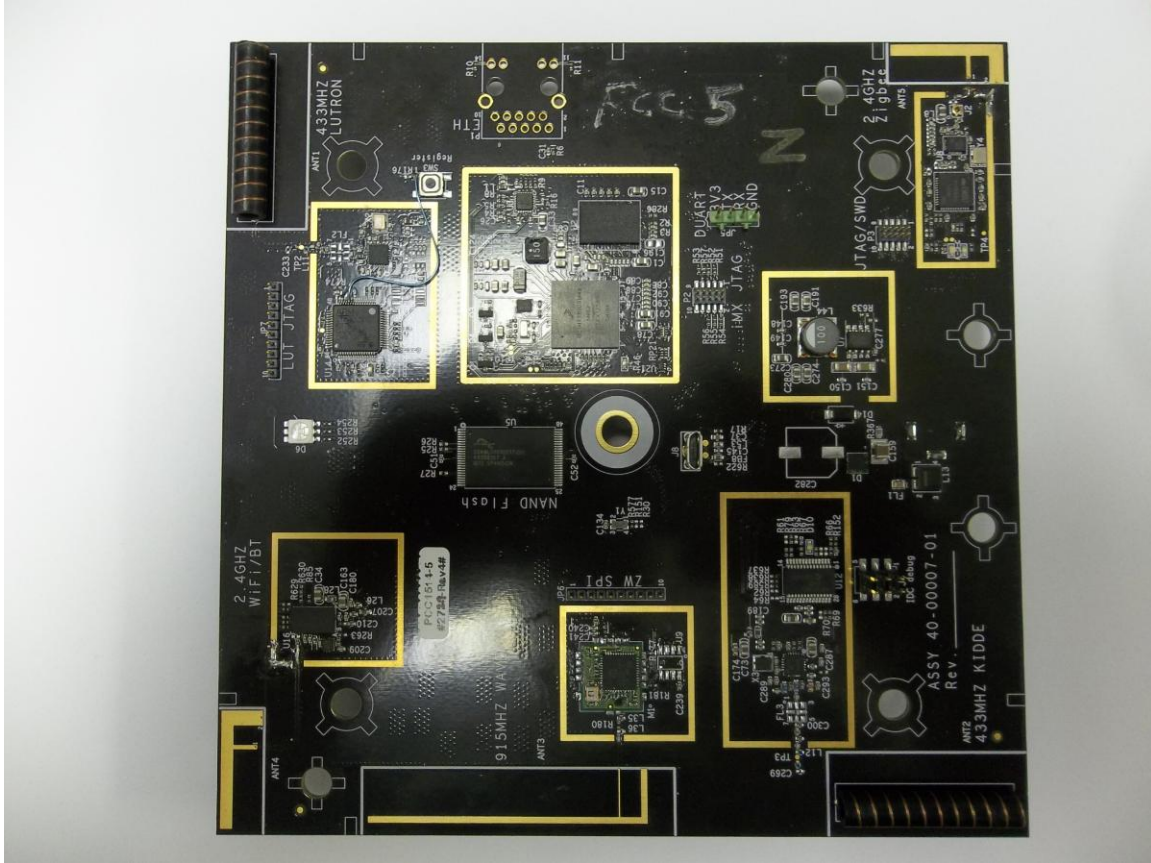


Figure 4. PCB Component Side

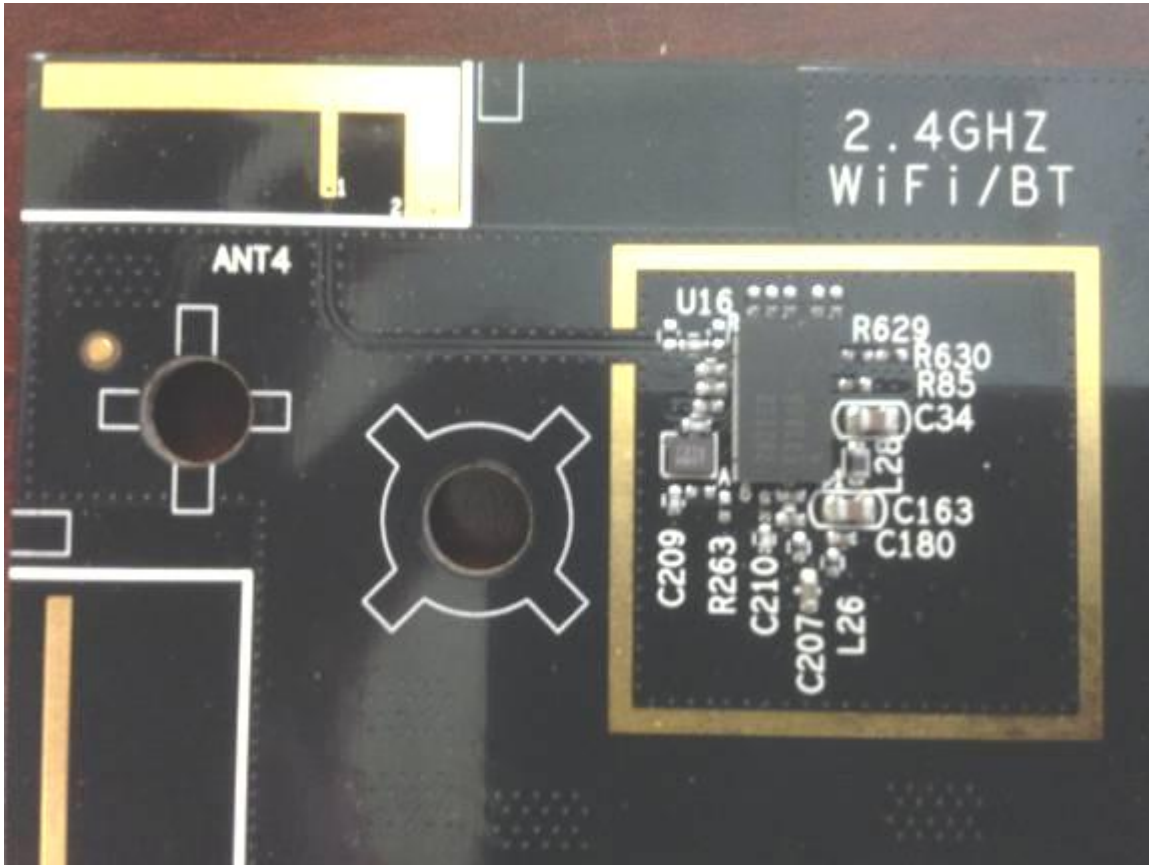


Figure 5. WiFi/BT Radio (2400-2483.5 MHz)

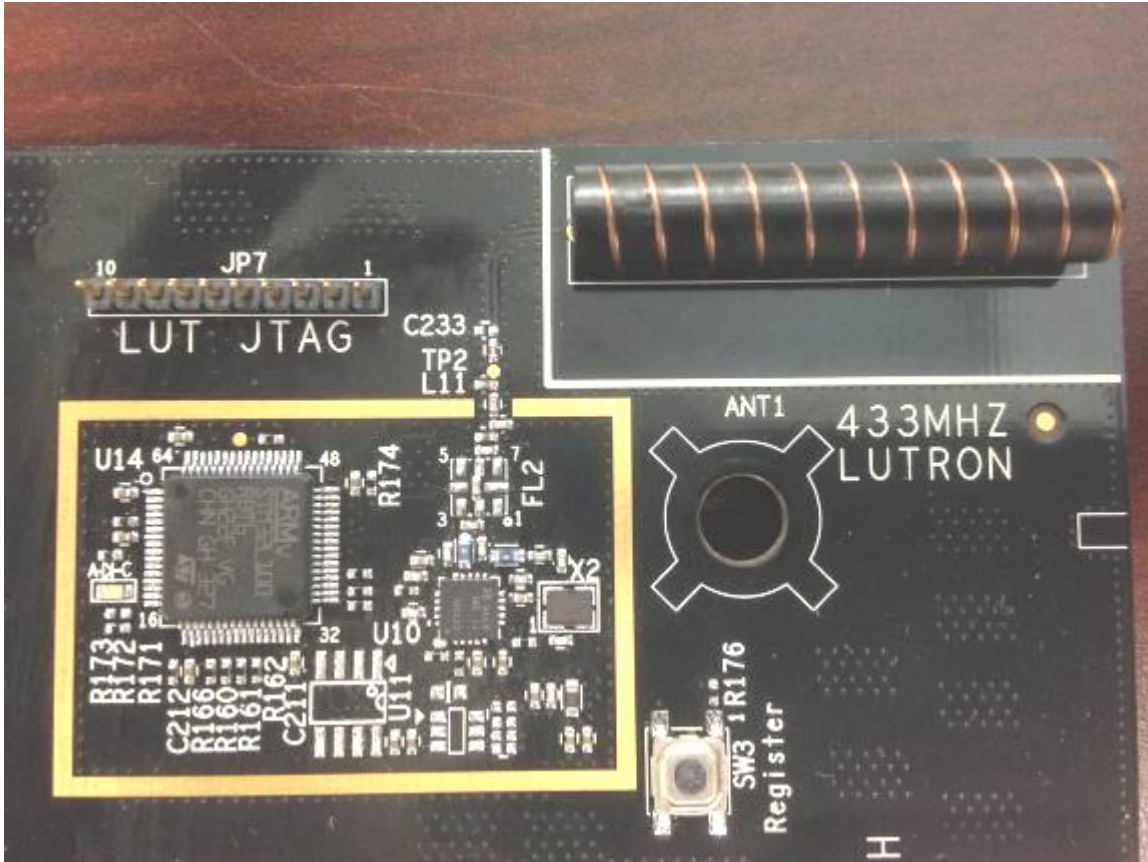


Figure 6. Lutron Radio (433 MHz)

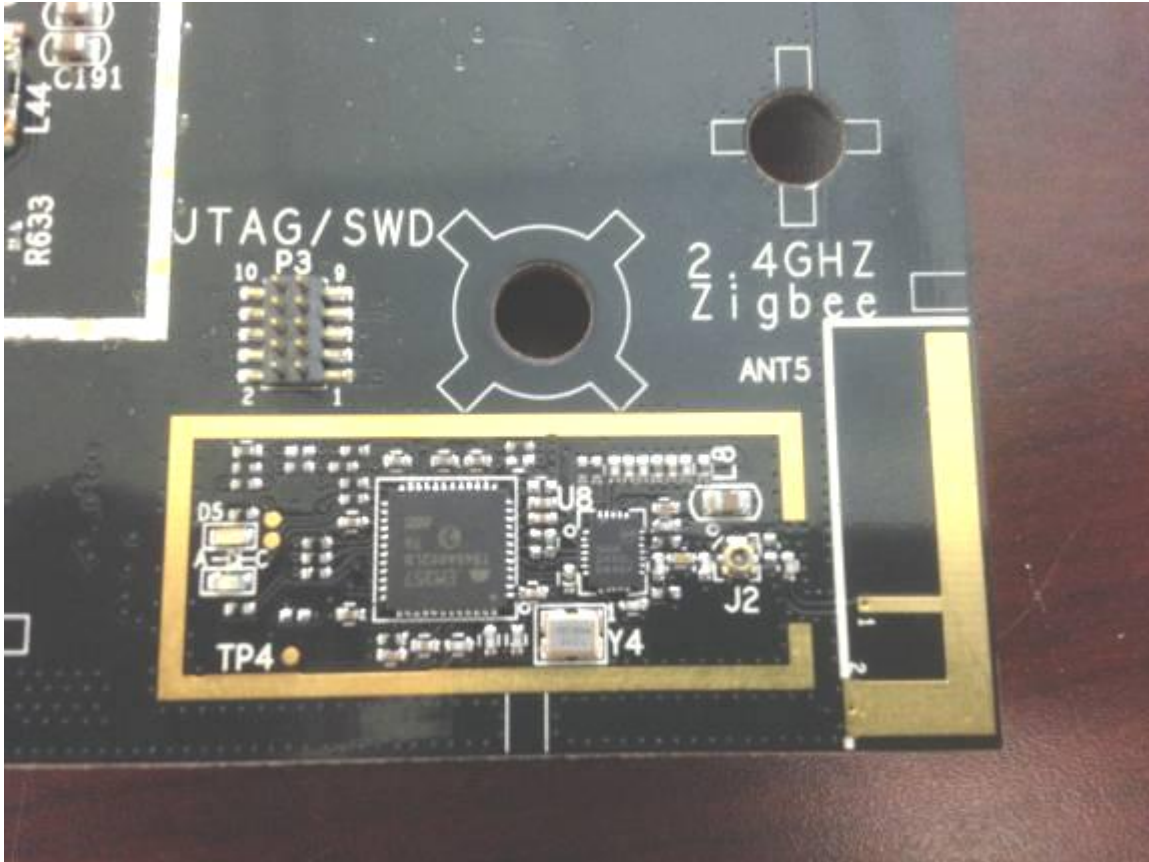


Figure 7. Zigbee Radio (2400 MHz - 2483.5 MHz)

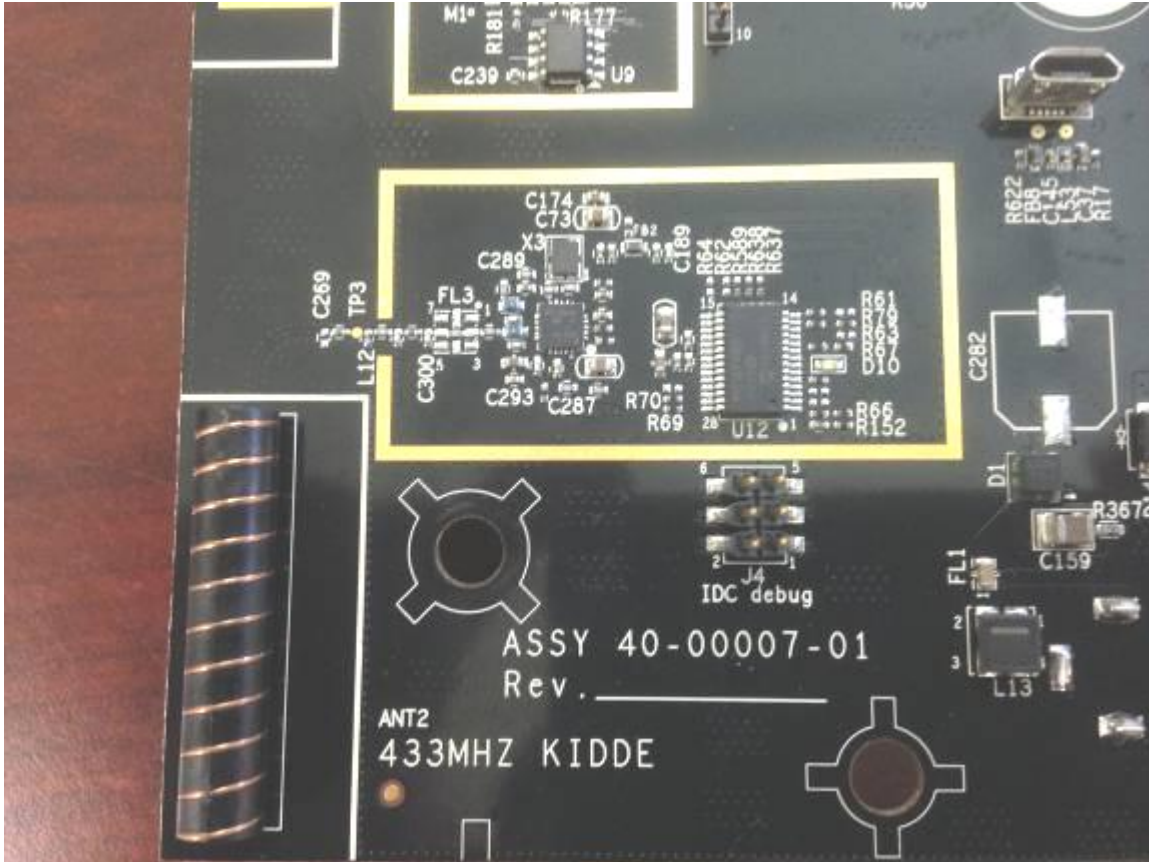


Figure 8. Kiddle Receiver (433 MHz)



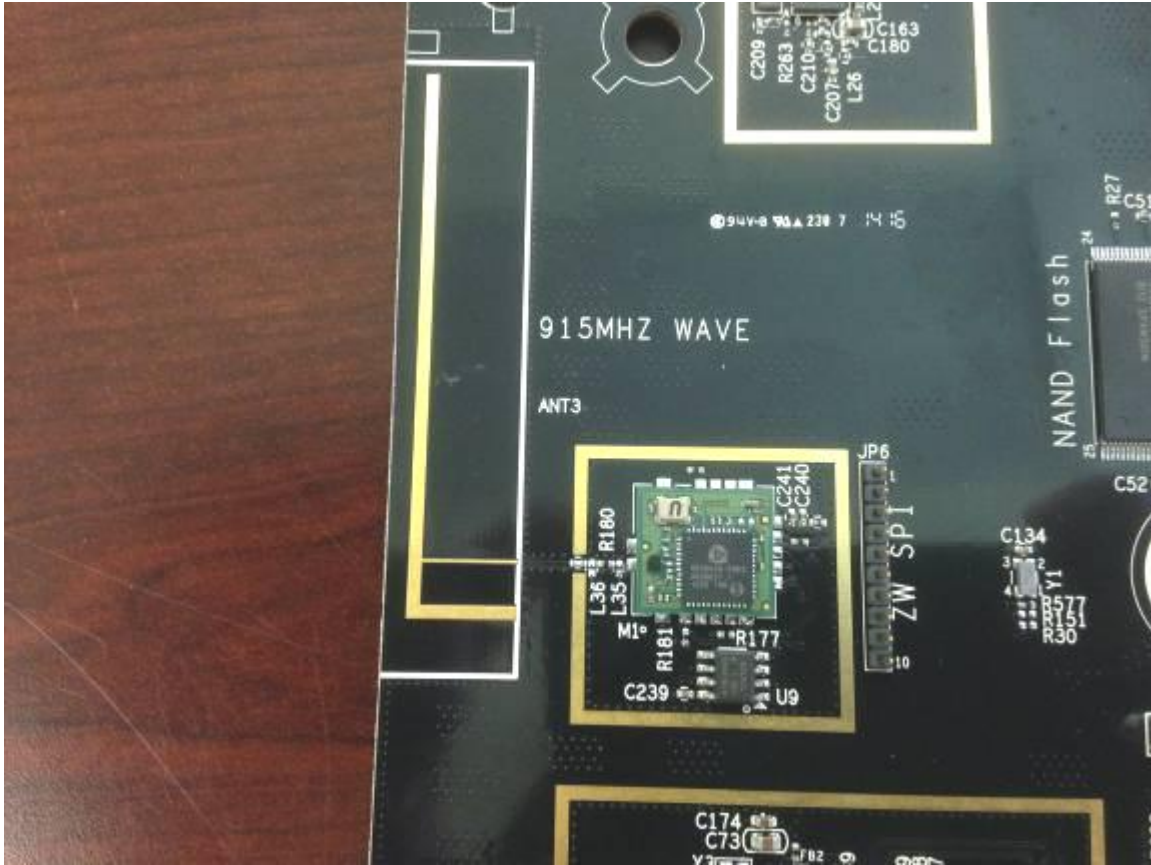


Figure 9. Z-Wave Radio (902 MHz - 928 MHz)

